

MuzFull Mini FM Transmitter User Guide (Model: MF-100)

※ Please read this manual carefully before using.

Getting Quick Started

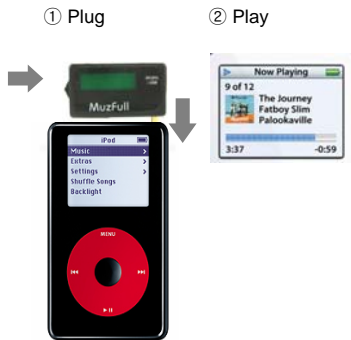
Thanks for buying the MuzFull FM Transmitter. We'll get you up and running in 2 easy steps – Plug, Play, Tune.

1. Plug your MuzFull FM transmitter into your portable audio device and turn on MuzFull FM Transmitter.

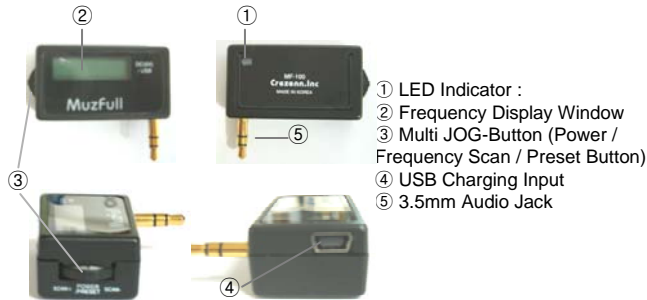
2. Turn on portable audio device and play music.

If the frequency is not an empty frequency in your area (i.e. there is music or talk already on that station), please find an empty frequency.

In some situations, extraneous noises may be perceptible. This phenomena is going to be most obvious when the adapted audio player's volume is low and the stereo volume is high. We recommend that users keep the audio player around 60-80% of full volume for best signal to noise ratio, in other words, best performance.



Locating the Controls



Basic Operation

Power On/Off

- Press and hold the Multi JOG-Button ③ (Power/Preset knob) approx. 2 seconds to turn on MuzFull FM transmitter. The LCD backlight turns on and the display shows current channel.

Locating a Frequency & Scan Tuning

- Jog up "scan+" or down "scan-" knob to select desired frequency, the frequency changes by 0.1 MHz each time.
- Use scan tuning by jogging up/down and hold the knob to quickly locate a frequency or to monitor several stations within a band.

Storing Frequency (Preset Tuning)(88.1 MHz – 107.9 MHz)

- To store a station into memory, use the following sequence:
 1. Tune into a desired frequency by jogging up/down knob.
 2. Press preset knob ③ once to make a preset mode. The display flashes and then move and choose one of preset address pressing preset knob ③.
 3. Press preset knob within 5 seconds in order to save the station.

Recall of stored frequency

- Recall a stored frequency directly pressing ③ preset knob. Press the knob twice to make a flashing mode and select stored frequency pressing preset knob, LCD displays the frequency and storage number.

Adjust Volume

- Note that a level of volume in portable audio device have to be 60~80% for RF efficiency.

Charging Battery

How to Charge

- Charge your MuzFull FM Transmitter by connecting USB gender (USB Mini 5Pin) to a computer provided.
- Charging time is approx. 1hour



Charging status indication by LED color

- Charging Mode: light red color / Charging completed: green color.

Battery Running Time :

- Max. 10 hours
- To maximize battery life, remove adapter to avoid battery drain when your audio device is not in use.

Package Contents



- ① MuzFull Mini FM transmitter
- ② USB Car Charger
- ③ User Manual

Important Cautions

- 1.Prices, features and specifications are subject to change without notice.
- 2.Due to manufacturing tolerances there could be some minor differences between the actual product and the pictures above.
- 3.Note that each unique combination of FM transmitter, FM receiver, antenna, radio signal environment, and selected frequency will produce various levels of signal quality.
In some situations, extraneous noises may be perceptible. This phenomena is going to be most obvious when the adapted audio player's volume is low and the stereo volume is high. We recommend that users keep the audio player around 60-80% of full volume for best signal to noise ratio, in other words, best performance.
- 4.Do not use the player in extremely hot or cold, dusty or damp field.
- 5.Do not attempt to disassemble, repair or modify the product, or it will be out of guarantee.
6. "Changes or modifications not expressly approved by the party responsible for compliance could void the user's authority to operate the equipment for FCC rules"

Service and Technical Support

Contacting Crezenn

Troubleshooting information and answers to frequently asked questions are available 24 hours a day on the Crezenn website at www.crezenn.com.

CREZENN INC.

3rd floor, 2042-17, Jeongwang-dong, Siheung-si, Gyeonggi-do,
429-450 South Korea www.crezenn.com Made in Korea