

## EMI -- TEST REPORT

<b>Test Report No. :</b>	<b>T32050-00-12HS</b>	11. December 2007
		Date of issue

Type / Model Name : EBI 10

Product Description : Data logger (13.56 MHz, 2.4 GHz)

**Applicant** : Ebro Electronic GmbH & Co. KG

Address : Peringerstr. 10

DE-85055 Ingolstadt

**Manufacturer** : Ebro Electronic GmbH & Co. KG

Address : Peringerstr. 10

DE-85055 Ingolstadt

**Licence holder** : Ebro Electronic GmbH & Co. KG

Address : Peringerstr. 10

DE-85055 Ingolstadt

<b>Test Result</b> according to the standards listed in clause 1 test standards:	<b>Positive</b>
--	-----------------



The test report merely corresponds to the test sample.  
It is not permitted to copy extracts of these test results without the written permission of the test laboratory.

# Contents

<b>1</b>	<b><u>TEST STANDARDS</u></b>	<b>3</b>
<b>2</b>	<b><u>SUMMARY</u></b>	<b>4</b>
<b>3</b>	<b><u>EQUIPMENT UNDER TEST</u></b>	<b>5</b>
3.1	PHOTO DOCUMENTATION OF THE EUT	5
3.2	POWER SUPPLY SYSTEM UTILISED	14
3.3	SHORT DESCRIPTION OF THE EQUIPMENT UNDER TEST (EUT)	14
<b>4</b>	<b><u>TEST ENVIRONMENT</u></b>	<b>15</b>
4.1	ADDRESS OF THE TEST LABORATORY	15
4.2	ENVIRONMENTAL CONDITIONS	15
4.3	STATEMENT OF THE MEASUREMENT UNCERTAINTY	15
4.4	MEASUREMENT PROTOCOL FOR FCC, VCCI AND AUSTEL	15
4.5	DISCOVERY OF WORST CASE MEASUREMENT CONDITIONS	16
<b>5</b>	<b><u>TEST CONDITIONS AND RESULTS</u></b>	<b>17</b>
5.1	MAXIMUM PEAK OUTPUT POWER	17
5.2	RADIATED EMISSIONS 9 KHz – 40 GHz	19
5.3	6 dB BANDWIDTH	26
5.4	BAND EDGE TEST	31
5.5	PEAK POWER DENSITY	35
5.6	MAXIMUM PERMISSIBLE EXPOSURE (MPE)	37
<b>6</b>	<b><u>USED TEST EQUIPMENT AND ACCESSORIES</u></b>	<b>39</b>

# 1 TEST STANDARDS

The tests were performed according to following standards:

## **FCC Rules and Regulations Part 15 Subpart C - Intentional Radiators (May 04, 2007)**

Part 1, Section 1.1310	Radio frequency exposure limits
Part 2, Section 2.1093	RFE portable device
Part 15, Subpart A, Section 15.31	Measuring standards
Part 15, Subpart A, Section 15.33	Frequency range of radiated measurements
Part 15, Subpart C, Section 15.203	Antenna requirement
Part 15, Subpart C, Section 15.204	External radio frequency power amplifiers and antenna modifications
Part 15, Subpart C, Section 15.205	Restricted bands of operation
Part 15, Subpart C, Section 15.212	Modular transmitter
Part 15, Subpart C, Section 15.207(a)	AC Line conducted emissions
Part 15, Subpart C, Section 15.209(a)	Radiated emissions, general requirements
Part 15, Subpart C, Section 15.247(d)	Radiated emissions, outside the used frequency band
Part 15, Subpart C, Section 15.247(a)(2)	Bandwidth requirement
Part 15, Subpart C, Section 15.247(b)(3)	Maximum Peak conducted output Power
Part 15, Subpart C, Section 15.247(i)	Exposure of radio frequency energy levels

## **FCC Rules and Regulations Part 15 Subpart B - Unintentional Radiators (May 04, 2007)**

Part 15, Subpart B, Section 15.107(a)	AC Line conducted emissions
Part 15, Subpart B, Section 15.109(a)	Radiated emissions, general requirements

## 2 SUMMARY

### GENERAL REMARKS:

The EUT works at 13.56 MHz and 2.400 GHz – 2.4835 GHz. The transmitter 13.56 MHz did pass the tests according FCC 15.109 by mikes-testingpartners gmbh. For the measurements results please refer to the testreport T32050-00-11HS.

The frequency range was scanned from 30 MHz to 25000 MHz. All emissions not reported in this test report are more than 10 dB below the specified limit.

### FINAL ASSESSMENT:

The equipment under test **fulfills** the EMI requirements cited in clause 1 test standards.

Date of receipt of test sample : acc. to storage records

Testing commenced on : 24. September 2007

Testing concluded on : 10. December 2007

Checked by:

Tested by:

---

Klaus Gegenfurtner  
Dipl.-Ing.(FH)  
Manager: Radio Group

---

Hermann Smetana  
Dipl.-Ing.(FH)  
Radio Expert

### **3 EQUIPMENT UNDER TEST**

#### **3.1 Photo documentation of the EUT**

External views of the data logger family EBI 10:

Top view, Logger with internal temperature sensor



Top view, Logger with external temperature sensor



FCC ID: VQ5-EBI10

Side view, Logger with external temperature sensor

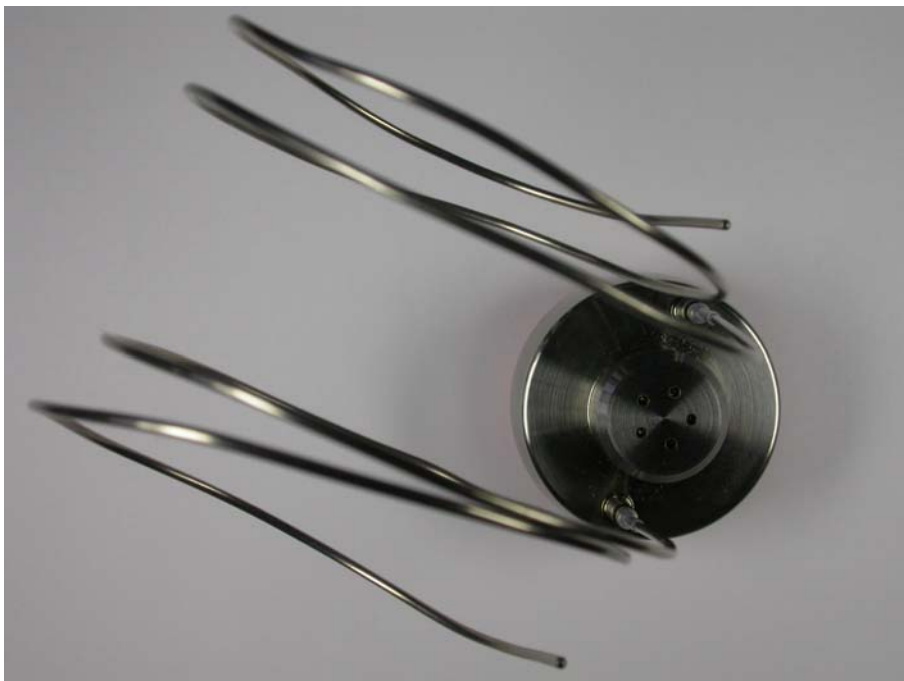


Top view, Logger with pressure sensor



FCC ID: VQ5-EBI10

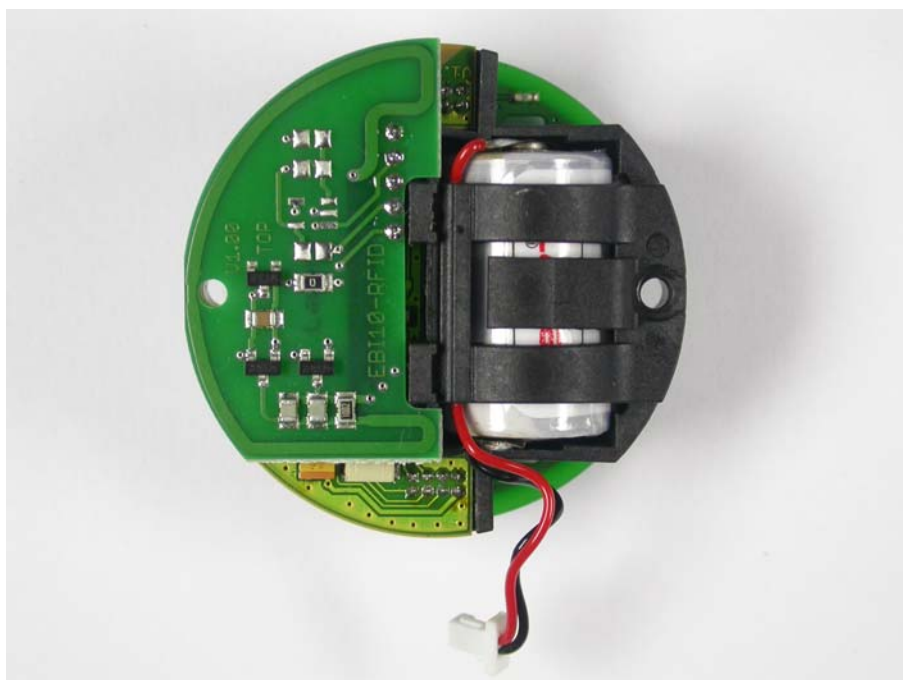
Top view, Logger with pressure sensor and external temperature sensor



Side view, Logger with pressure sensor and external temperature sensor

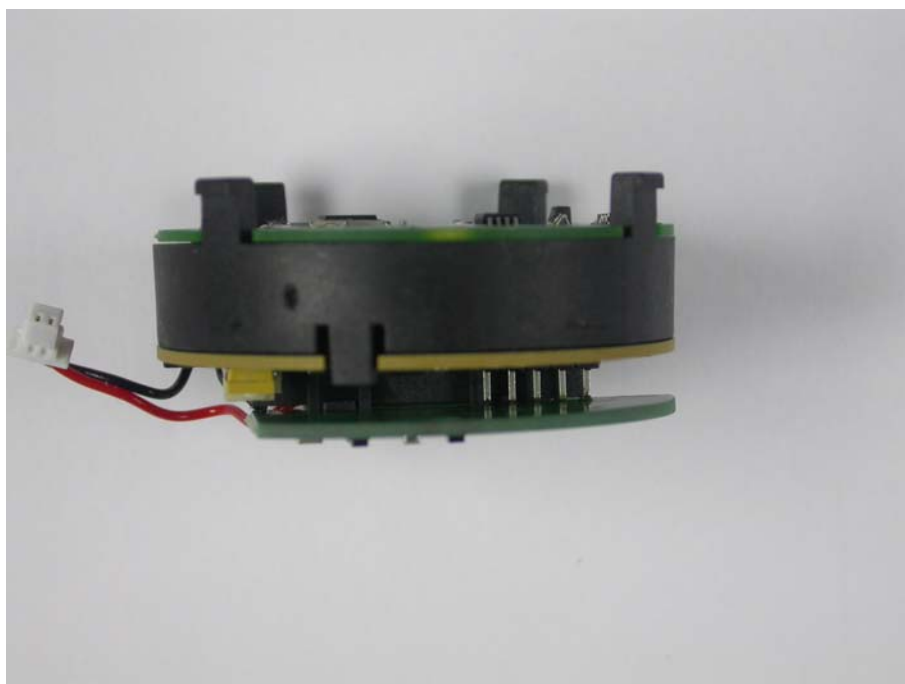


Internal views of the logger:

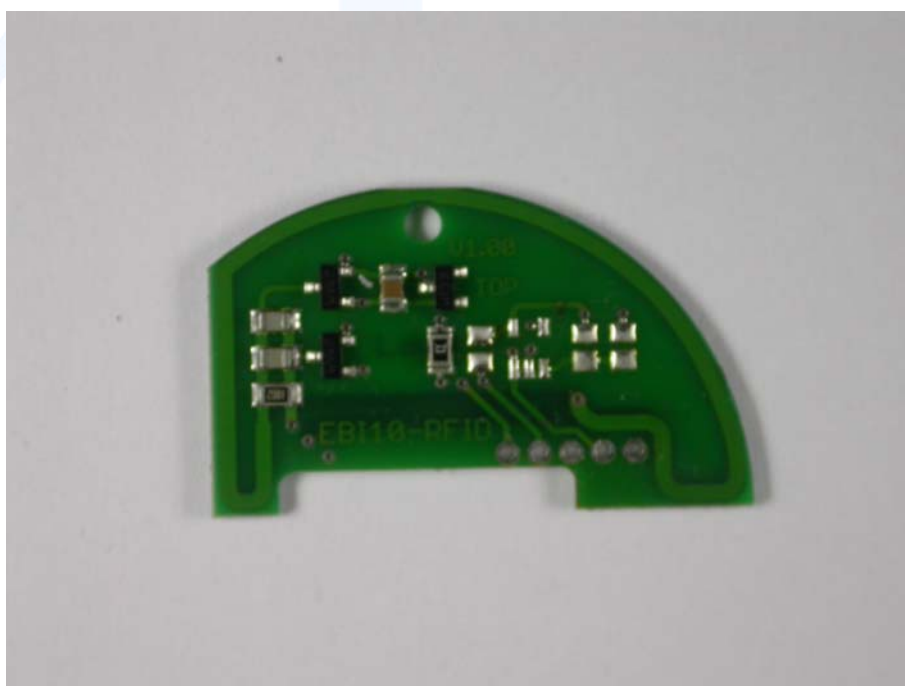
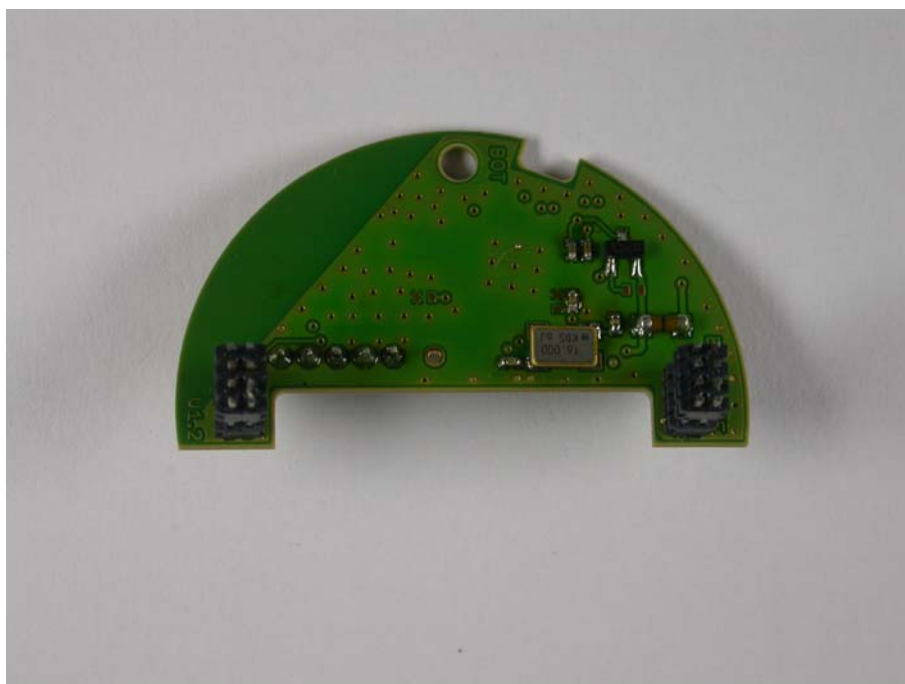




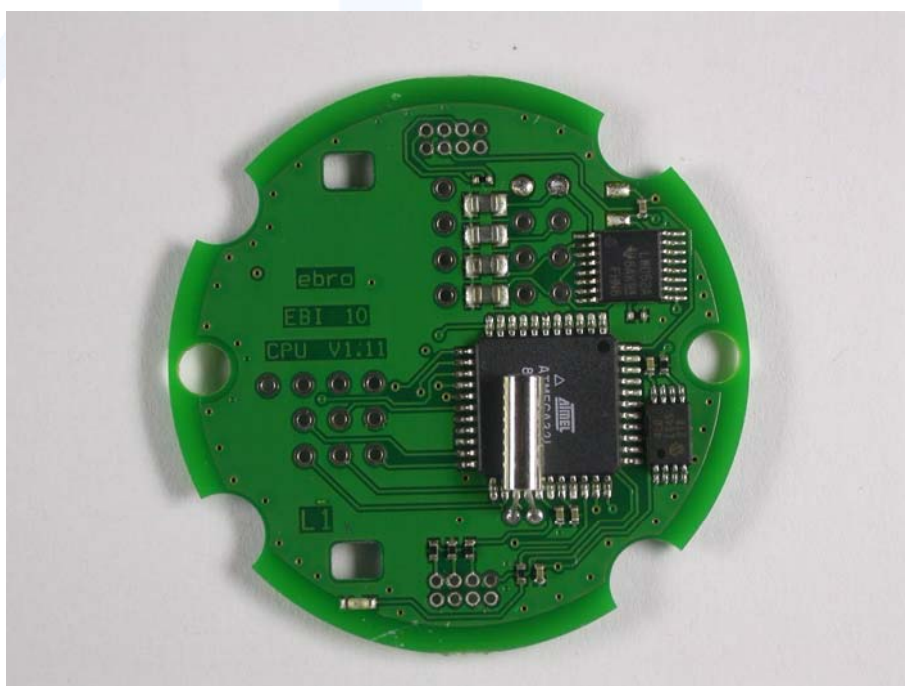
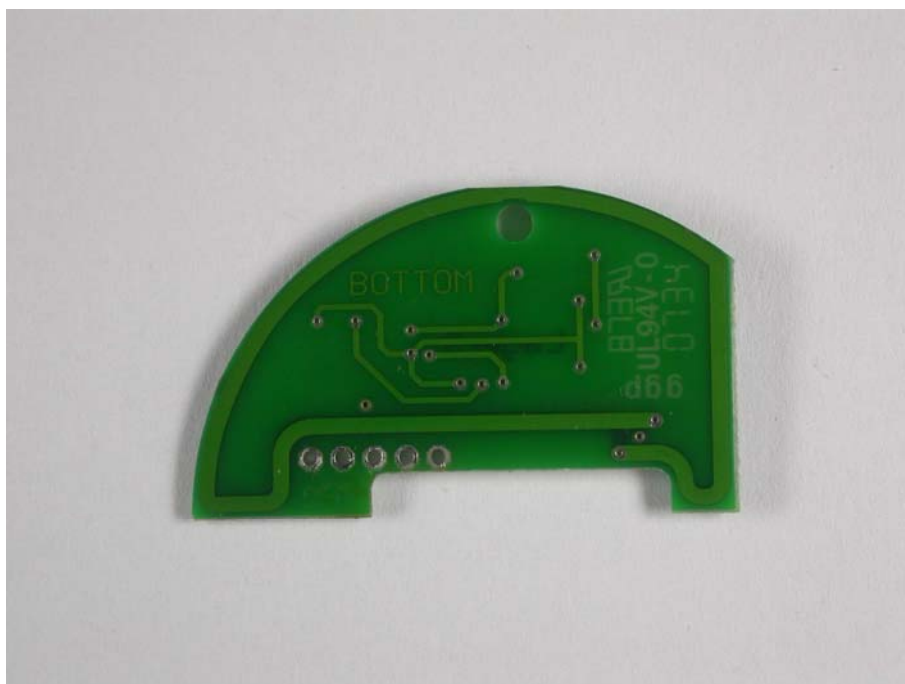
FCC ID: VQ5-EBI10



FCC ID: VQ5-EBI10



FCC ID: VQ5-EBI10



FCC ID: VQ5-EBI10



FCC ID: VQ5-EBI10



### 3.2 Power supply system utilised

Power supply voltage : 3.6 V, Lithium Battery powered, (Size=1/2AA)

### 3.3 Short description of the Equipment under Test (EUT)

Data logger for temperature and pressure. Up to 4 mobile data logger can be used by one interface. The interface identifies a logger in the programming slot via 13.56 MHz RFID-Transceiver. In the mobile data logger is a RFID-Tag only. A 2.4 GHz "ZIGBEE" port (Chipset according IEEE 802.15.4) is used for data exchange, communication and programming the data logger, if the logger is enabled for communication via 13.56 MHz signal. This enable signal is necessary to activate the 2.4 GHz interface, otherwise no communication is possible.

Number of tested samples: 1  
Serial number: Prototype

#### EUT operation mode:

The equipment under test was operated during the measurement under the following conditions:

- TX-Mode

The following peripheral devices and interface cables were connected during the measurements:

- _____	Model : _____
- _____	Model : _____
- _____	Model : _____
- _____	Model : _____
- _____	Model : _____
- _____	Model : _____



## **4 TEST ENVIRONMENT**

### **4.1 Address of the test laboratory**

**mikes-testingpartners gmbh**  
**Ohmstrasse 2-4**  
**94342 Strasskirchen**  
**Germany**

### **4.2 Environmental conditions**

During the measurement the environmental conditions were within the listed ranges:

Temperature: 15-35 ° C

Humidity: 30-60 %

Atmospheric pressure: 86-106 kPa

### **4.3 Statement of the measurement uncertainty**

The data and results referenced in this document are true and accurate. The reader is cautioned that there may be errors within the calibration limits of the equipment and facilities. The measurement uncertainty was calculated for all measurements listed in this test report acc. to CISPR 16-4-2 /11.2003 „Uncertainties, statistics and limit modelling – Uncertainty in EMC measurements“ and is documented in the quality system acc. to DIN EN ISO/IEC 17025. Furthermore, component and process variability of devices similar to that tested may result in additional deviation. The manufacturer has the sole responsibility of continued compliance of the device.

### **4.4 Measurement Protocol for FCC, VCCI and AUSTEL**

#### **4.4.1 GENERAL INFORMATION**

##### **4.4.1.1 Test Methodology**

Conducted and radiated disturbance testing is performed according to the procedures in International Special Committee on Radio Interference (CISPR) Publication 22, European Standard EN 55022 as shown under section 1 of this report.

In compliance with 47 CFR Part 15 Subpart A Section 15.38 testing for FCC compliance may be done following the ANSI C63.4-2003 procedures and using the CISPR 22 Limits.

#### 4.4.1.2 Justification

The Equipment Under Test (EUT) is configured in a typical user arrangement in accordance with the manufacturer's instructions. A cable is connected to each available port and either terminated with a peripheral using the appropriate impedance characteristic or left unterminated. Where appropriate, cables are manually manipulated with respect to each other thus obtaining maximum disturbances from the unit.

#### **4.4.2 DETAILS OF TEST PROCEDURES**

##### 4.4.2.1 General Standard Information

The test methods used comply with CISPR Publication 22, EN 55022 - "Information technology equipment - Radio disturbance characteristics - Limits and methods of measurement" and with ANSI C63.4-2003 - "Methods of Measurement of Radio-Noise Emissions from Low-Voltage Electrical and Electronic Equipment in the Range of 9 kHz to 40 GHz."

#### **4.5 Discovery of worst case measurement conditions**

For evaluating the worst case the data logger was driven in maximum output power mode and measured in X, Y and Z-Position. The data logger has no active RFID at 13.56 MHz. The logger was set into network mode to enable the communication for the 2.4 GHz interface. The maximum output power was found in X-Posituon. So the measurements were performed in this direction to express the worst case.



## **5 TEST CONDITIONS AND RESULTS**

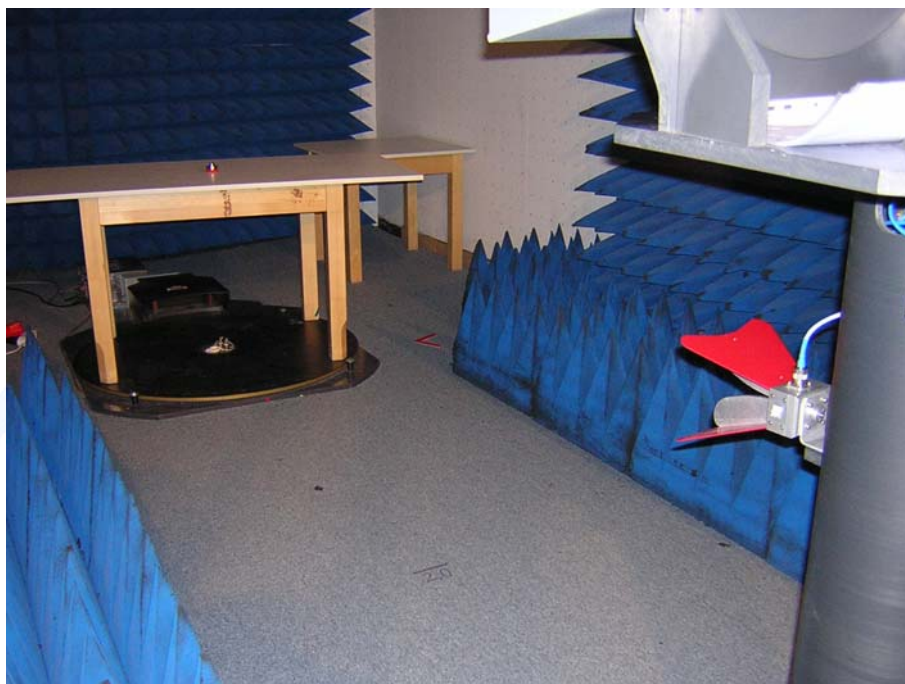
### **5.1 Maximum Peak Output Power**

For test instruments and accessories used see section 6 Part SER 3.

#### **5.1.1 Description of the test location**

Test location: AREA4

#### **5.1.2 Photo documentation of the test set-up**



#### **5.1.3 Description of Measurement**

Maximum conducted peak output power:

A spectrum analyzer / EMI test receiver is connected to the output of the transmitter via a suitable attenuator while EUT was operating in transmit mode using the assigned frequency.

Analyzer Settings:

- Detector: Max hold
- RBW: greater than 20 dB Bandwidth
- VBW:  $\geq$  RBW
- Sweep Time: Coupled

#### **Alternative test procedure:**

If antenna conducted tests cannot be performed on the EUT, radiated tests to show compliance with the various conducted requirements of Section 15.247 are performed. A pre-amp have been used in making the following requirements.

Radiated maximum peak output power:

Radiated maximum peak output power from the EUT is measured above 1 GHz, using a tuned receiver (Spectrum Analyser) and appropriate linearly polarized antennas. Table top equipment is placed on a 1.0 X 1.5 meter non-conducting table 80 centimetres above the ground plane. Floor standing equipment is placed directly on the turntable/ground plane. The set up of the Equipment under test will be in accordance to ANSI C63.4-2003. The Interface cables that are closer than 40 centimetres to the ground plane are bundled in the center in a serpentine fashion so they are at least 40 centimetres from the ground plane. Cables to simulators/testers (if used in this test) are routed through the center of the table and to a screen room located outside the test area.

Measurement are made in both the horizontal and vertical planes of polarization in a fully anechoic room using a spectrum analyzer with the detector function set to peak and resolution as well as video bandwidth set to 1 MHz. All tests are performed at a test-distance of 3 meters. Hand-held or body-worn devices are rotated through three orthogonal axes to determine which attitude and configuration procedure the highest emission relative the limit and therefore shall be used for final testing. During the tests the EUT is rotated all around to find the maximum levels of emissions. The cables and equipment were placed and moved within the range of position likely to find their maximum emissions. When the EUT is larger than the beamwidth of the measuring antenna, the measurement antenna will be moved over the surfaces for the four sides or the test distance will be reduced to demonstrate that emissions were at maximum at the limit distance.

Analyzer Settings:

- Detector: Max hold
- RBW: greater than 20 dB Bandwidth
- VBW:  $\geq$  RBW
- Sweep Time: Coupled

**5.1.4 Test result**

Channel	Frequency [GHz]	Peak power [dBm]	Correct. [dB]	Corr. peak power [dBm]	Peak power limit [dBm]	Delta [dB]
11	2.4050	-7.15	-9.7	-16.85	30	-46.85
18	2.4400	-17.87	-9.7	-27.57	30	-57.57
26	2.4825	-16.67	-9.8	-26.47	30	-56.47

Peak Power Limit according to FCC Subpart 15.247(b)(3):

Frequency [MHz]	Peak power limit	
	[dBm]	[Watt]
902-928	30	1,0
<b>2400-2483.5</b>	<b>30</b>	<b>1,0</b>
5725-5850	30	1,0

The requirements are **FULFILLED**.

**Remarks:** This test has been performed radiated because of dedicated antenna.

\_\_\_\_\_

\_\_\_\_\_

\_\_\_\_\_

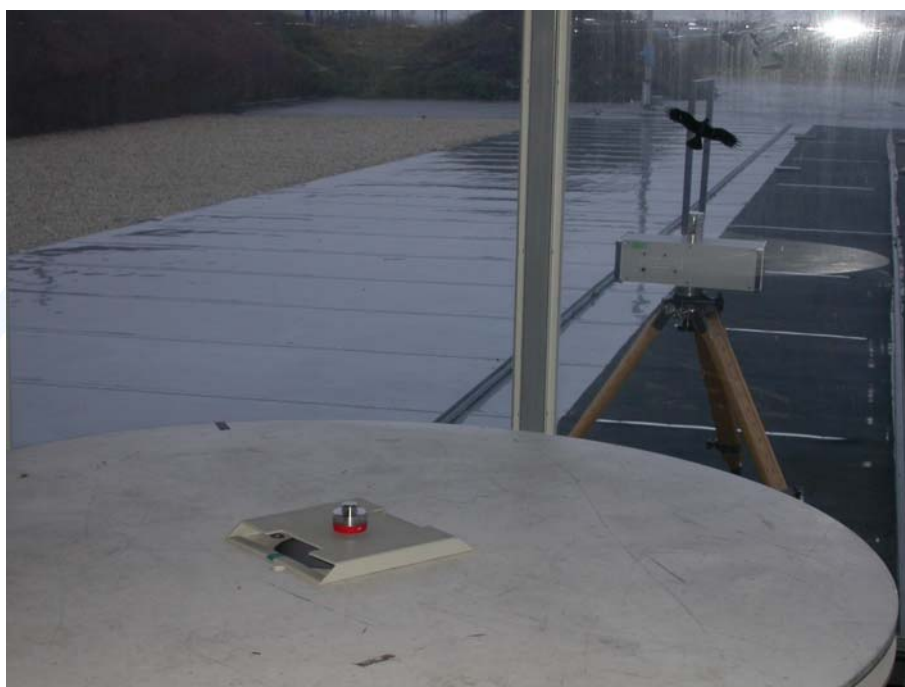
## 5.2 Radiated emissions 9 kHz – 40 GHz

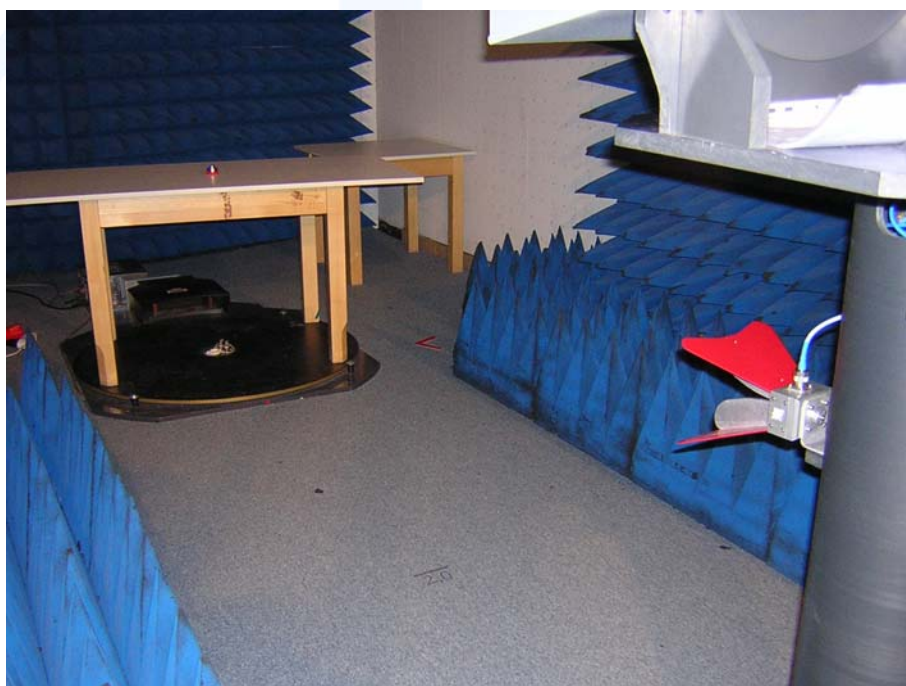
For test instruments and accessories used see section 6 Part SER1, SER 2 and SER 3.

### 5.2.1 Description of the test location

Test location: OATS1  
Test location: Anechoic Chamber2  
  
Test distance: 3 metres  
Test distance: 3 metres

### 5.2.2 Photo documentation of the test set-up





### 5.2.3 Description of Measurement

The spurious emissions from the EUT will be measured on an open area test site in the frequency range of 9 kHz to 30 MHz using a tuned receiver and a shielded loop antenna. The antenna was positioned 3, 10 or 30 meters horizontally from the EUT. Measurements have been made in all three orthogonal axes and the shielded loop antenna was rotated to locate the maximum of the emissions. In the case where larger measuring distances are required the results will extrapolated based on the values measured on the closer distances according to Section 15.31 (f) (2) [2]. The final measurement will be performed with an EMI Receiver set to Quasi Peak detector except

for the frequency bands 9 kHz to 90 kHz and 110 to 490 kHz where an average detector will be used according to Section 15.209 (d) [2].

mikes



The final level, expressed in dB $\mu$ V/m, is arrived at by taking the reading from the EMI receiver (Level dB $\mu$ V) and adding the antenna correction factor and cable loss factor (Factor dB) to it. This result then has to be compared with the relevant FCC limit.

The resolution bandwidth during the measurement is as follows:

9 kHz – 150 kHz: ResBW: 200 Hz

150 kHz – 30 MHz: ResBW: 9 kHz

Radiated spurious emissions from the EUT are measured in the frequency range of 30 MHz to 1000 MHz using a tuned receiver and appropriate broadband linearly polarized antennas. Measurements between 30 MHz and 1000 MHz are made with 120 kHz/6 dB bandwidth and quasi-peak detection. Table top equipment is placed on a 1.0 X 1.5 meter non-conducting table 80 centimetres above the ground plane. Floor standing equipment is placed directly on the turntable/ground plane. The set up of the Equipment under test will be in accordance to ANSI C63.4-2003. The Interface cables that are closer than 40 centimetres to the ground plane are bundled in the center in a serpentine fashion so they are at least 40 centimetres from the ground plane. Cables to simulators/testers (if used in this test) are routed through the center of the table and to a screen room located outside the test area. The antenna was positioned 3, 10 or 30 meters horizontally from the EUT. To locate maximum emissions from the test sample the antenna is varied in height from 1 to 4 meters, measurement scans are made with both horizontal and vertical antenna polarization's and the EUT are rotated 360 degrees.

The final level, expressed in dB $\mu$ V/m, is arrived by taking the reading from the EMI receiver (Level dB $\mu$ V) and adding the correction factors and cable loss factor (Factor dB) to it. This is done automatically in the EMI receiver, where the correction factors are stored. This result then has the FCC or CISPR limit subtracted from it to provide the Delta which gives the tabular data as shown in the data sheets at page.

The radiated emissions from the EUT are measured in the frequency range of 1 GHz to maximum frequency as specified in section 15.33, using a tuned receiver (Spectrum Analyser) and appropriate linearly polarized antennas. Table top equipment is placed on a 1.0 X 1.5 meter non-conducting table 80 centimetres above the ground plane. Floor standing equipment is placed directly on the turntable/ground plane. The set up of the Equipment under test will be in accordance to ANSI C63.4-2003.

The Interface cables that are closer than 40 centimetres to the ground plane are bundled in the center in a serpentine fashion so they are at least 40 centimetres from the ground plane. Cables to simulators/testers (if used in this test) are routed through the center of the table and to a screen room located outside the test area. The antenna was positioned 3m horizontally from the EUT.

Measurement are made in both the horizontal and vertical planes of polarization in a fully anechoic room using a spectrum analyzer with the detector function set to peak and resolution as well as video bandwidth set to 100 kHz and for any spurious emission or modulation product that falls in Restricted Band, as defined in Section 15.205, set the resolution and video bandwidth to 1 MHz.

All tests are performed at a test-distance of 3 meters. Hand-held or body-worn devices are rotated through three orthogonal axes to determine which attitude and configuration procedure the highest emission relative the limit and therefore shall be used for final testing. During the tests the EUT is rotated all around to find the maximum levels of emissions. The cables and equipment were placed and moved within the range of position likely to find their maximum emissions. When the EUT is larger than the beamwidth of the measuring antenna, the measurement antenna will be moved over the surfaces for the four sides or the test distance will be reduced to demonstrate that emissions were at maximum at the limit distance.

Analyzer Settings (EMI receiver) for spurious emissions which fall not in Restricted Band:

- Detector: Max hold
- RBW: 100 kHz for  $f \geq 1\text{GHz}$ , 120 kHz for  $f \leq 1\text{GHz}$
- VBW:  $\geq$  RBW
- Sweep Time: Coupled
- Detector function: Peak

**FCC ID: VQ5-EBI10**

Analyzer Settings (EMI receiver) for spurious emissions which fall in Restricted Band:

- Detector: Max hold
- RBW: 1 MHz for  $f \geq 1\text{GHz}$ , 120 kHz for  $f \leq 1\text{GHz}$
- VBW:  $\geq$  RBW
- Sweep Time: Coupled
- Detector function: Peak for  $f \geq 1\text{GHz}$ , Quasi Peak for  $f \leq 1\text{GHz}$

#### 5.2.4 Test result

##### Testresult in detail: (<1GHz)

Corrected field strength of fundamental wave as reference for radiated emissions:

99.8 dB $\mu$ V/m

Channel 11												
Frequency [MHz]	Restricted Band	Reading Level QP [dBμV]	Reading Level AV [dBμV]	Reading Level PK [dBμV]	Bandwidth [kHz]	Correct. factor [dB]	Corrected Level QP [dBμV/m]	Corrected Level AV [dBμV/m]	Corrected Level PK [dBμV/m]	Limit [dBμV/m]		Delta [dB]
										PK	QP	
0.009-0.15					0.2		< 30					
0.15-30					9		< 30					
30-1000												
30-88	■				120		< 30				40	> -10,0
88-216	■				120		< 30				43,5	> -13,5
216-960	■				120		< 30				46	> -16,0
960-1000	■				120		< 30				54	> -24,0

Corrected field strength of fundamental wave as reference for radiated emissions:

89.13 dB $\mu$ V/m

Channel 18												
Frequency [MHz]	Restricted Band	Reading Level QP [dBµV]	Reading Level AV [dBµV]	Reading Level PK [dBµV]	Bandwidth [kHz]	Correct. factor [dB]	Corrected Level QP [dBµV/m]	Corrected Level AV [dBµV/m]	Corrected Level PK [dBµV/m]	Limit [dBµV/m]		Delta [dB]
										PK	QP	
0.009-0.15					0.2		< 30					
0.15-30					9		< 30					
30-1000												
30-88	■				120		< 30				40	> -10,0
88-216	■				120		< 30				43,5	> -13,5
216-960	■				120		< 30				46	> -16,0
960-1000	■				120		< 30				54	> -24,0

Corrected field strength of fundamental wave as reference for radiated emissions:

98.3 dB $\mu$ V/m

Channel 26												
Frequency [MHz]	Restricted Band	Reading Level QP [dBµV]	Reading Level AV [dBµV]	Reading Level PK [dBµV]	Bandwidth [kHz]	Correct. factor [dB]	Corrected Level QP [dBµV/m]	Corrected Level AV [dBµV/m]	Corrected Level PK [dBµV/m]	Limit [dBµV/m]		Delta [dB]
										PK	QP	
0.009-0.15					0.2		< 30					
0.15-30					9		< 30					
30-1000												
30-88	■				120		< 30				40	> -10,0
88-216	■				120		< 30				43,5	> -13,5
216-960	■				120		< 30				46	> -16,0
960-1000	■				120		< 30				54	> -24,0

**Testresult in detail:(>1GHz)**

Corrected field strength of fundamental wave as reference for radiated emissions: 90.1 dBµV/m

Channel 11											
Frequency [MHz]	Restricted Band	Reading Level PK [dBµV]	Corr. Duty Cycle [dB]	Level AV [dBµV] *)	Band-width [kHz]	Correct. Factor [dB]	Corrected Level PK [dBµV/m]	Corrected Level AV [dBµV/m]	Limit PK [dBµV/m]	Limit AV [dBµV/m]	Delta [dB]
1000-25000					1000			< 45		54	> -9

Corrected field strength of fundamental wave as reference for radiated emissions: 79.4 dBµV/m

Channel 18											
Frequency [MHz]	Restricted Band	Reading Level PK [dBµV]	Corr. Duty Cycle [dB]	Level AV [dBµV] *)	Band-width [kHz]	Correct. Factor [dB]	Corrected Level PK [dBµV/m]	Corrected Level AV [dBµV/m]	Limit PK [dBµV/m]	Limit AV [dBµV/m]	Delta [dB]
1000-25000					1000			< 45		54	> -9

Corrected field strength of fundamental wave as reference for radiated emissions: 80.5 dBµV/m

Channel 26											
Frequency [MHz]	Restricted Band	Reading Level PK [dBµV]	Corr. Duty Cycle [dB]	Level AV [dBµV] *)	Band-width [kHz]	Correct. Factor [dB]	Corrected Level PK [dBµV/m]	Corrected Level AV [dBµV/m]	Limit PK [dBµV/m]	Limit AV [dBµV/m]	Delta [dB]
1000-25000					1000			< 45		54	> -9

\*) Average values were measured with spectrum analyzer by taking the following Settings

RBW: 1 MHz  
VBW: 10 Hz  
Sweep: Auto

Peak-Limit according to FCC Subpart 15.247(d):

In any 100 kHz bandwidth outside the frequency band 2400 – 2483.50 MHz, the radio frequency power that is produced by the intentional radiator shall be at least 20 dB below that in the 100 kHz bandwidth within the band that contains the highest level of the desired power, based on either an RF conducted or a radiated measurement.

Attenuation below the general limits specified in §15.209(a) is not required.

In addition, radiated emissions which fall in the restricted bands, as defined in §15.205(a), must also comply with the radiated emission limit specified in §15.209(a) (see §15.205(c)).

Final radiated limits for spurious emissions which fall not in restricted bands:

Frequency [MHz]	Limits acc. 15.209 [dBµV/m]	Measurement distance [metres]	Limits acc. 15.247(c) [dBµV/m]			Final Radiated Limits [dBµV/m]		
			Ch 11	Ch 18	Ch 26	Ch 11	Ch 18	Ch 26
0,009-0,490	2400/F(kHz)	300	76.6	78.5	78.3	-3.4	-1.5	-1.7
0,490-1,705	24000/F(kHz)	30	76.6	78.5	78.3	36.6	38.5	38.3
1,705-30	30	30	76.6	78.5	78.3	36.6	38.5	38.3



FCC ID: VQ5-EBI10

30-88	40	3	76.6	78.5	78.3	76.6	78.5	78.3
88-216	43,5	3	76.6	78.5	78.3	76.6	78.5	78.3
216-960	46	3	76.6	78.5	78.3	76.6	78.5	78.3
Above 960	54	3	76.6	78.5	78.3	76.6	78.5	78.3

Radiated limits according to FCC Part 15 Subpart 15.209(a) for spurious emissions which fall in restricted bands:

Frequency [MHz]	Field strength of spurious emissions		Measurement distance [metres]
	[µV/m]	dB [µV/m]	
0,009-0,490	2400/F(kHz)		300
0,490-1,705	24000/F(kHz)		30
1,705-30	30	29,5	30
30-88	100	40	3
88-216	150	43.5	3
216-960	200	46	3
Above 960	500	54	3

#### Restricted bands of operation:

The field strength of emissions appearing within these frequency bands shall not exceed the limits shown in §15.209

MHz	MHz	MHz	GHz
0.090 – 0.110	16.42 – 16.423	399.9 – 410	4.5 – 5.15
0.495 – 0.505	16.69475 – 16.69525	608 – 614	5.35 – 5.46
2.1735 – 2.1905	16.80425 – 16.80475	960 – 1240	7.25 – 7.75
4.125 – 4.128	25.5 – 25.67	1300 – 1427	8.025 – 8.5
4.17725 – 4.17775	37.5 – 38.25	1435 – 1626.5	9.0 – 9.2
4.20725 – 4.20775	73 – 74.6	1645.5 – 1646.5	9.3 – 9.5
6.215 – 6.218	74.8 – 75.2	1660 – 1710	10.6 – 12.7
6.26775 – 6.26825	108 – 121.94	1718.8 – 1722.2	13.25 – 13.4
6.31175 – 6.31225	123 – 138	2200 – 2300	14.47 – 14.5
8.291 – 8.294	149.9 – 150.05	2310 – 2390	15.35 – 16.2
8.362 – 8.366	156.52475 – 156.52525	2483.5 – 2500	17.7 – 21.4
8.37625 – 8.38675	156.7 – 156.9	2690 – 2900	22.01 – 23.12
8.41425 – 8.41475	162.0125 – 167.17	3260 – 3267	23.6 – 24.0
12.29 – 12.293	167.72 – 173.2	3332 – 3339	31.2 – 31.8
12.51975 – 12.52025	240 – 285	3345.8 – 3358	36.43 – 36.5
12.57675 – 12.57725	322 – 335.4	3600 – 4400	

The requirements are **FULFILLED**.

**Remarks:** During the test, the EUT was set into normal modulation mode as intended for use.

The measurement was performed up to the 10<sup>th</sup> harmonic (25000MHz).

### 5.3 6 dB Bandwidth

For test instruments and accessories used see section 6 Part MB.

#### 5.3.1 Description of the test location

Test location: AREA4

#### 5.3.2 Photo documentation of the test set-up



#### 5.3.3 Description of Measurement

The bandwidth is measured at an amplitude level reduced from the reference level by a specified ratio of -6 dB. The reference level is the level of the highest amplitude signal observed from the transmitter at either the fundamental frequency or the first-order modulation products in all typical modes of operation, including the unmodulated carrier, even if atypical.

The resolution bandwidth of measuring instrument was set to a value as shown in the following table below according to ANSI C63.4-2003.

Fundamental frequency	Minimum resolution bandwidth
9 kHz to 30 MHz	1kHz
30 to 1000 MHz	10 kHz
1000 MHz to 40 GHz	100 kHz

#### 5.3.4 Test result

Channel number	Fundamental frequency [MHz]	6 dB Bandwidth [MHz]	Minimum limit [MHz]
11	2405	2.520	0,5
18	2440	2.500	0,5
26	2480	2.540	0,5

Limit according to FCC Subpart 15.247 (a)(2):

The minimum 6 dB bandwidth shall be at least 500 kHz

The requirements are **FULFILLED**.

**Remarks:** For detailed test result please refer to following test protocol.

---



---

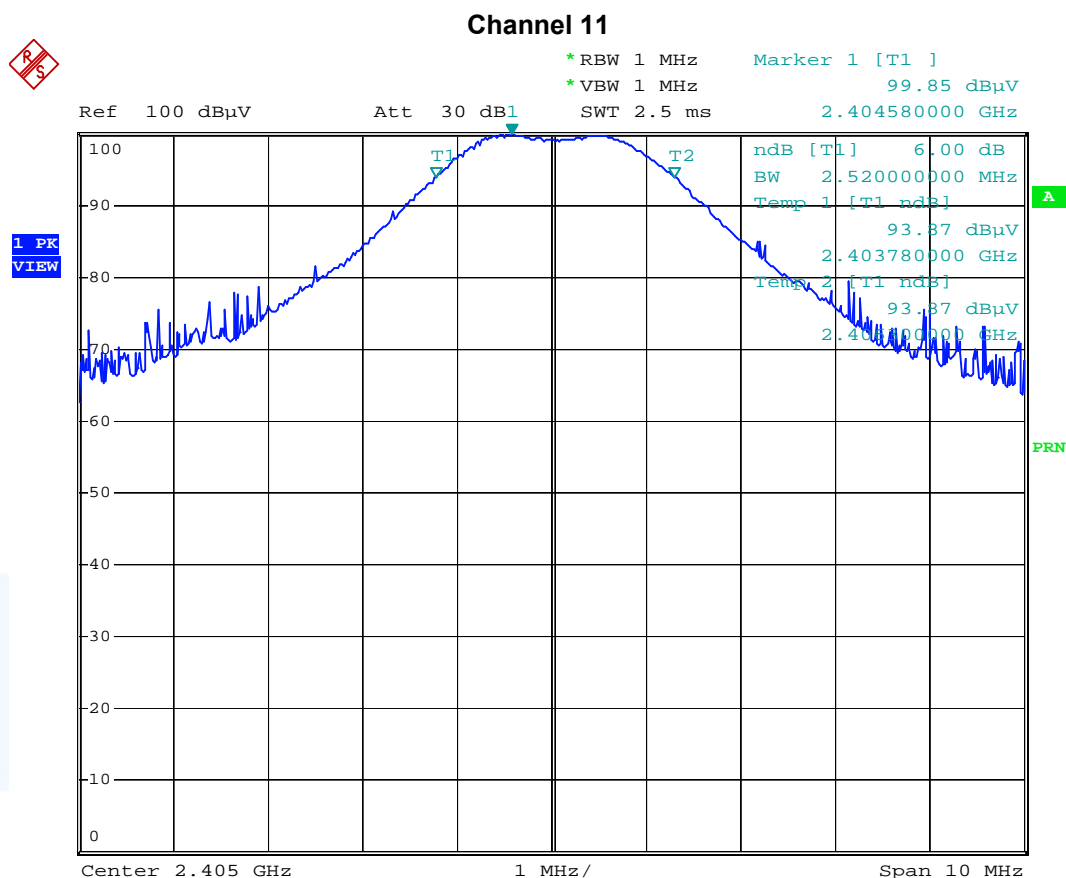


---

FCC ID: VQ5-EBI10

### 5.3.5 Test protocol

#### 6dB Bandwidth Measurement FCC Part 15 Subpart 15.247(a)(2)



Comment: EBRO, Logger EBI 10, PCB-Ant., TX-Mode  
Comment: PosY, File64, vertikal  
Date: 16.OCT.2007 10:13:48

FCC ID: VQ5-EBI10

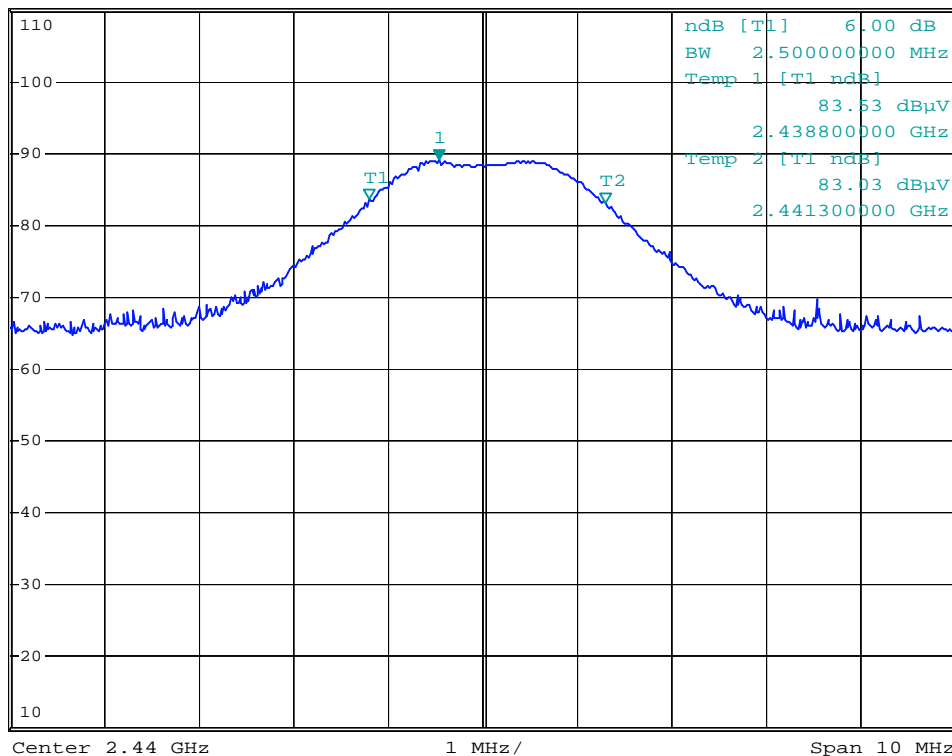
**6dB Bandwidth Measurement**  
FCC Part 15 Subpart 15.247(a)(2)

**Channel 18**



\*RBW 1 MHz      Marker 1 [T1 ]  
\*VBW 1 MHz      89.13 dBμV  
Ref 110 dBμV      Att 40 dB      SWT 2.5 ms      2.439540000 GHz

1 PK  
VIEW



Comment: EBRO, Logger EBI 10, PCB-Ant., TX-Mode, Kanal18  
Comment: PosY, File67, horiz.  
Date: 16.OCT.2007 10:43:49

FCC ID: VQ5-EBI10

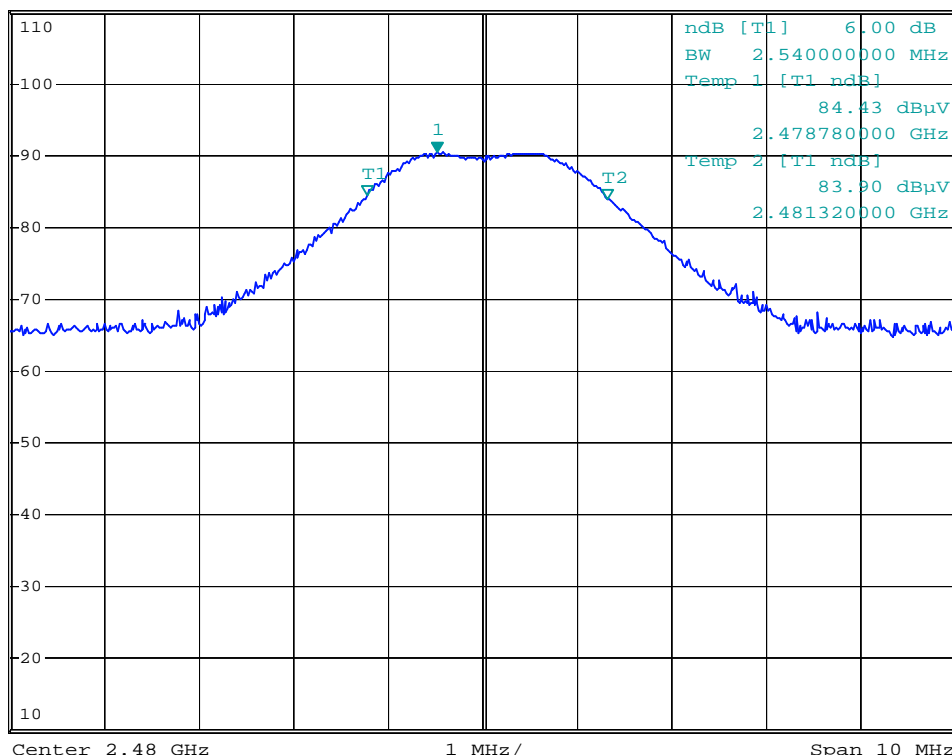
# 6dB Bandwidth Measurement FCC Part 15 Subpart 15.247(a)(2)

## Channel 26



\*RBW 1 MHz      Marker 1 [T1 ]  
\*VBW 1 MHz      90.33 dBμV  
Ref 110 dBμV      Att 40 dB      SWT 2.5 ms      2.479520000 GHz

1 PK  
VIEW



Comment: EBRO, Logger EBI 10, PCB-Ant., TX-Mode, Kanal18  
Comment: PosY, File69, vert.  
Date: 16.OCT.2007 10:52:05

## 5.4 Band edge test

For test instruments and accessories used see section 6 Part MB.

### 5.4.1 Description of the test location

Test location: AREA4

### 5.4.2 Photo documentation of the test set-up



### 5.4.3 Description of Measurement

The EUT was connected to the spectrum analyzer with a suitable attenuator. The span of the spectrum analyzer was set wide enough to capture the peak level of the emission operating on the channel closest to the bandedge, as well as any modulation products which fall outside of the authorized band of operation. The highest amplitude appearing on spectral display was measured and it was set as the reference level for the emission mask. It was allowed the trace to stabilize and after then it was set the emission mask on the reference level to show the compliance with the bandedge requirements.

Further settings on the spectrum analyzer:

RBW:	$\geq 1\%$ of the span
VBW:	$\geq$ RBW
Sweep:	Auto
Detector function:	Peak



#### 5.4.4 Test result

Frequency [GHz]	Peak Power Output [dBμV]	Spurious emission read value [dBμV]	Result of Band edge [dBc]	Band edge LIMIT [dBc]
< 2.400	90.1	45	45.1	≥ 20
> 2.4835	80.5	50	30.5	≥ 20

Peak-Limit according to FCC Subpart 15.247(d):

In any 100 kHz bandwidth outside the frequency band 2400 – 2483.50 MHz, the radio frequency power that is produced by the intentional radiator shall be at least 20 dB below that in the 100 kHz bandwidth within the band that contains the highest level of the desired power, based on either an RF conducted or a radiated measurement. Attenuation below the general limits specified in §15.209(a) is not required.  
In addition, radiated emissions which fall in the restricted bands, as defined in §15.205(a), must also comply with the radiated emission limit specified in §15.209(a) (see §15.205(c)).

Additional requirement according to 15.205(a) restricted band (2.4835 GHz – 2.5000 GHz):

Frequency [MHz]	Reading Level PK [dBμV]	Correct. Duty Cycle [dB]	Level AV [dBμV]	Band- Width [kHz]	Correct. Factor [dB]	Correct. Level PK [dBμV/m]	Correct. Level AV [dBμV/m]	Limit PK [dBμV/m]	Limit AV [dBμV/m]	Delta [dB]
2483.5	50.0	-		30	-10.2	39.8		74.0	54.0	-34.8

The requirements are **FULFILLED**.

**Remarks:** For detailed test results please refer to following test protocol.

---



---



---

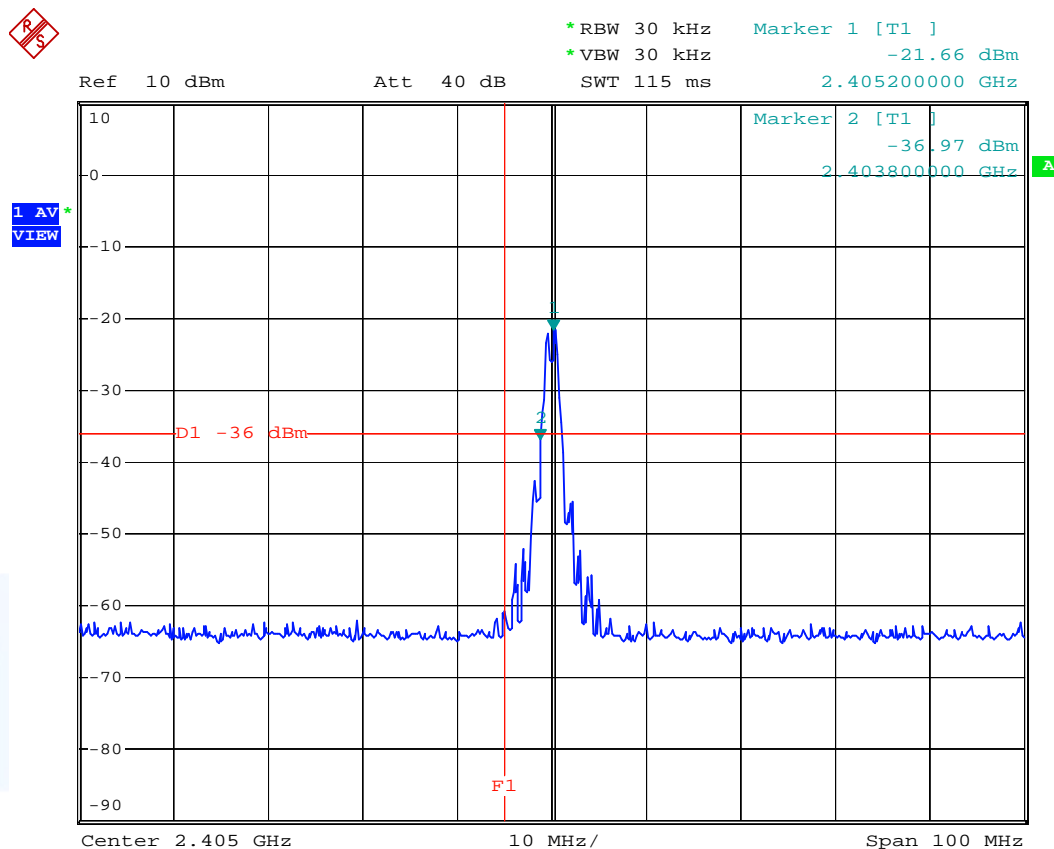


---



## 5.4.5 Test protocol

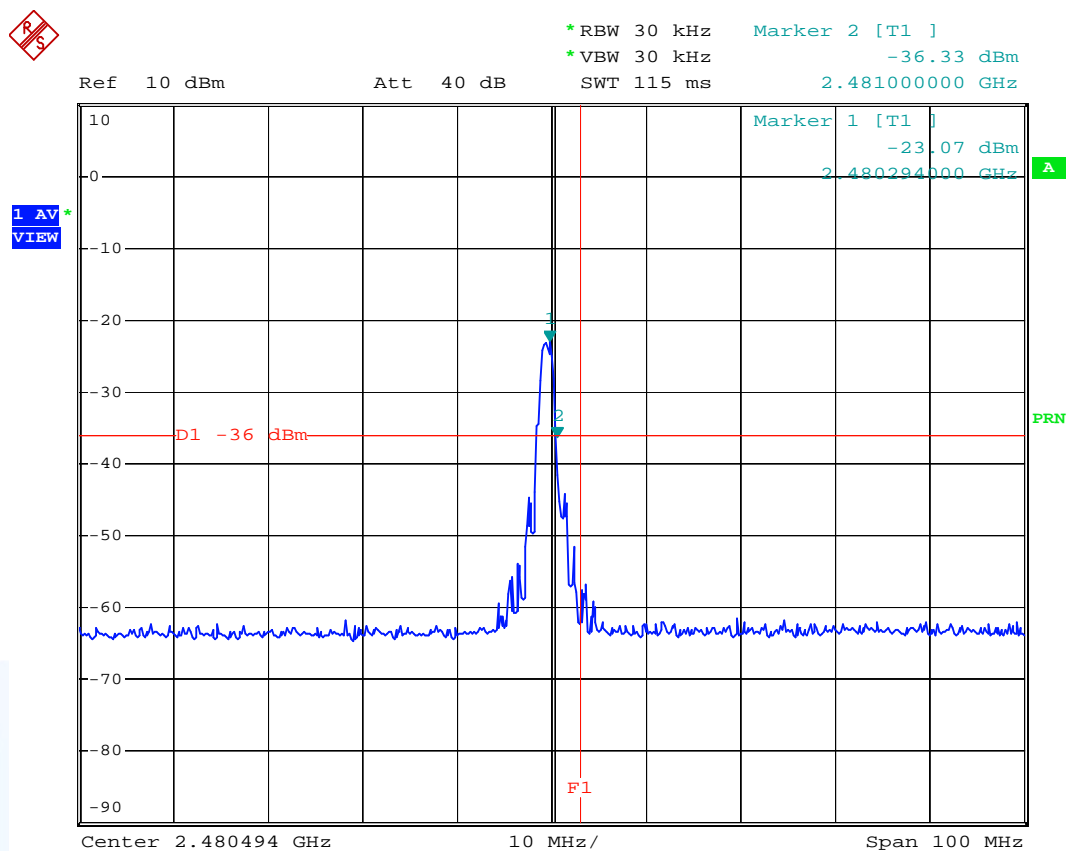
### Lower Channel 2405 MHz



Comment: ixp, EBRO,  
Comment: FR, File 58, 55C, +15V, K11  
Date: 10.OCT.2007 15:45:40

FCC ID: VQ5-EBI10

# Higher Channel 2480 MHz



Comment: ixp, EBRO,  
Comment: FR, File 55, 55C, +15V, K26  
Date: 10.OCT.2007 15:07:53

## 5.5 Peak Power Density

For test instruments and accessories used see section 6 Part SER 3.

### 5.5.1 Description of the test location

Test location: AREA4

### 5.5.2 Photo documentation of the test set-up



### 5.5.3 Description of Measurement

The EUT was connected to the spectrum analyzer with a suitable attenuator. The bandwidth of the fundamental frequency was measured with the spectrum analyzer using RBW= 3 kHz and VBW= 3 kHz, set sweep time equal to Span/3 kHz. The power spectral density was measured and recorded.

Settings on the spectrum analyzer:

RBW: 3 kHz  
VBW: 30 kHz  
Sweep: auto  
Detector function: Peak

### 5.5.4 Test result

Channel	Fundamental frequency [MHz]	Peak Power density [dBm/MHz]
11	2.405	-27.88
18	2.440	-24.19
26	2.480	-24.57

**FCC ID: VQ5-EBI10**

Limit according to FCC Subpart 15.247 (e):

The peak power spectral density shall not be greater than 8 dBm in any 3 kHz band.

The requirements are **FULFILLED**.

**Remarks:**

---

---

mikes

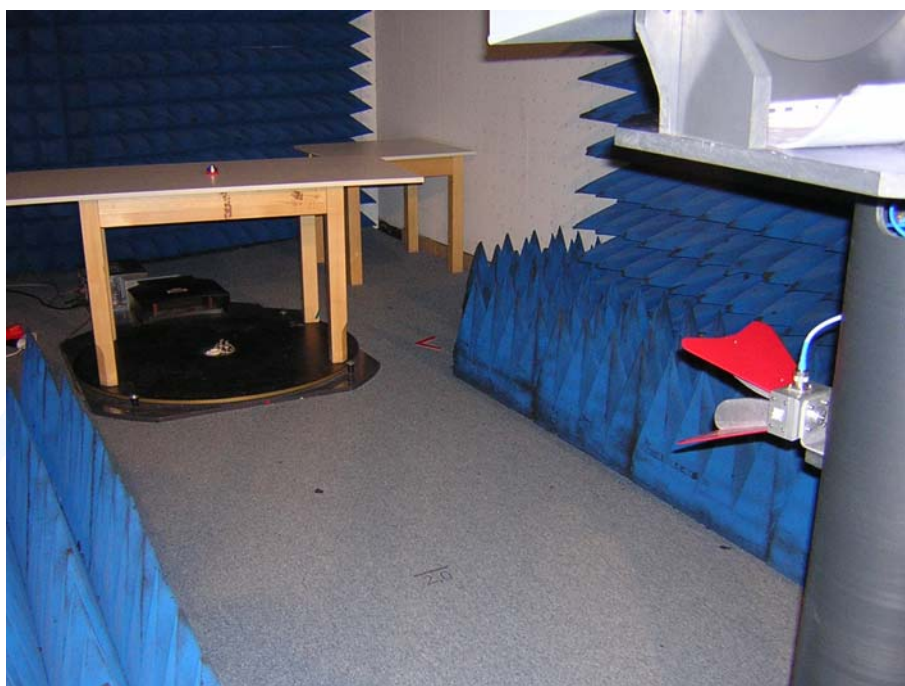
## 5.6 Maximum Permissible Exposure (MPE)

For test instruments and accessories used see section 6 Part **CPC3**.

### 5.6.1 Description of the test location

Test location: AREA4

### 5.6.2 Photo documentation of the test set-up



### 5.6.3 Calculation of MPE

Maximum output power:

Frequency range from 2400.0 to 2483.5 MHz: -16.9 dBm

For MPE-Calculation the following formula has been used:

Friis transmission formula:

$$P_d = \frac{P_{out} * G}{4 * \pi * r^2}$$

**Limit according §1.1310 table 1, Limit for Maximum Permissible Exposure**

Frequency range from 2400 to 2483.5 MHz

**Limit for general population / uncontrolled exposures: 1.0 mW/cm<sup>2</sup>**

The EUT is according to FCC Rules 47CFR 2.1093(b) no portable device. The EUT is designed to be used that radiating structures are outside of 20 cm of the body of the user.

**Test result:**

Maximum output power to the antenna:

 $P_{\text{out}} = 0.204 \text{ mW} (-16.9 \text{ dBm})$ 

Antenna gain:

 $G = 1.28 (2.14 \text{ dBi, worst case})$ 

Distance r:

 $r = 20 \text{ cm}$ **Power density:** **$P_d = 0.0001 \text{ mW/cm}^2$** 

The requirements for a non harmful use are **FULFILLED**.

**Remarks:**

---

---

---

## 6 USED TEST EQUIPMENT AND ACCESSORIES

All test instruments used, in addition to the test accessories, are calibrated and verified regularly.

The calibration intervals and the calibration history will be given out on request.

Test ID	Model / Type	Kind of Equipment	Manufacturer	Equipment No.
A 4	ESHS 30	EMI Test Receiver	Rohde & Schwarz München	02-02/03-05-002
	NNLK 8129	LISN	Schwarzbeck Mess-Elektron	02-02/20-05-001
	ESH 2 - Z 5	LISN	Rohde & Schwarz München	02-02/20-05-004
	N-4000-BNC	RF Cable	mikes-testingpartners gmbh	02-02/50-05-138
	N-1500-N	RF Cable	mikes-testingpartners gmbh	02-02/50-05-140
	ESH 3 - Z 2	Pulse Limiter	Rohde & Schwarz München	02-02/50-05-155
CPC 3	FSP 30	Spectrum Analyzer	Rohde & Schwarz München	02-02/11-05-001
	WK-340/40	Climatic Chamber	Weiss Umwelttechnik GmbH	02-02/45-05-001
	50 Ohm / 10 dB / 18 GHz	Attenuator	Huber + Suhner	02-02/50-05-078
	Sucoflex N-2000-SMA	RF Cable	novotronik Signalverarbeitung	02-02/50-05-083
	6543A	Power Supply	HP Hewlett-Packard	02-02/50-05-157
MB	FSP 30	Spectrum Analyzer	Rohde & Schwarz München	02-02/11-05-001
	WK-340/40	Climatic Chamber	Weiss Umwelttechnik GmbH	02-02/45-05-001
	50 Ohm / 10 dB / 18 GHz	Attenuator	Huber + Suhner	02-02/50-05-078
	Sucoflex N-2000-SMA	RF Cable	novotronik Signalverarbeitung	02-02/50-05-083
	6543A	Power Supply	HP Hewlett-Packard	02-02/50-05-157
SER 1	FMZB 1516	Magnetic Field Antenna	Schwarzbeck Mess-Elektron	01-02/24-01-018
	ESVS 30	EMI Test Receiver	Rohde & Schwarz München	02-02/03-05-003
	S10162-B/+11N-50-10-5/+1	RF Cable 33m	Huber + Suhner	02-02/50-05-031
	KK-EF393-21N-16	RF Cable 20m	Huber + Suhner	02-02/50-05-033
	NW-2000-NB	RF Cable	Huber + Suhner	02-02/50-05-113
SER 2	ESVS 30	EMI Test Receiver	Rohde & Schwarz München	02-02/03-05-006
	VULB 9168	Trilog-Broadband Antenn	Schwarzbeck Mess-Elektron	02-02/24-05-005
	S10162-B/+11N-50-10-5/+1	RF Cable 33m	Huber + Suhner	02-02/50-05-031
	KK-EF393-21N-16	RF Cable 20m	Huber + Suhner	02-02/50-05-033
	NW-2000-NB	RF Cable	Huber + Suhner	02-02/50-05-113
SER 3	AFS4-01000400-10-10P-4	RF Amplifier 1-4 GHz	PARZICH GMBH	02-02/17-05-003
	AMF-4F-04001200-15-10P	RF Amplifier 4-12 GHz	PARZICH GMBH	02-02/17-05-004
	AFS5-12001800-18-10P-6	RF Amplifier 12-18 GHz	PARZICH GMBH	02-02/17-06-002
	BBHA 9120 E 251	Broad-Band Horn Antenn	Schwarzbeck Mess-Elektron	02-02/24-05-006
	WBH218H N	Horn Antenna 2-18 GHz	Q-par Angus Ltd	02-02/24-05-007
	Sucoflex N-2000-SMA	RF Cable	novotronik Signalverarbeitung	02-02/50-05-075
	Sucoflex N-2000-SMA	RF Cable	novotronik Signalverarbeitung	02-02/50-05-083
	Sucoflex N-2000-SMA	RF Cable	novotronik Signalverarbeitung	02-02/50-05-088

**FCC ID: VQ5-EBI10**

Equipment No.	Next Calib.	Last Calib.	Next Verif.	Last Verif.
02-02/03-05-002	04/20/2008	04/20/2007		
02-02/20-05-001	12.08.2007	06.08.2007		
02-02/20-05-004	03.11.2008	04.11.2005	12.08.2007	06.08.2007
02-02/50-05-138				
02-02/50-05-140				
02-02/50-05-155	03/25/2008	09/25/2007		
02-02/11-05-001	12.06.2007	12.06.2006		
02-02/45-05-001	09.01.2008	09.01.2005	12.06.2007	06.06.2007
02-02/50-05-078				
02-02/50-05-083				
02-02/50-05-157				
02-02/11-05-001	12.06.2007	12.06.2006		
02-02/45-05-001	09.01.2008	09.01.2005	12.06.2007	06.06.2007
02-02/50-05-078				
02-02/50-05-083				
02-02/50-05-157				
01-02/24-01-018	12.04.2007	12.04.2006		
02-02/03-05-003	04/26/2008	04/26/2007		
02-02/50-05-031				
02-02/50-05-033				
02-02/50-05-113				
02-02/03-05-006	07/24/2008	07/24/2007		
02-02/24-05-005	04/15/2008	04/15/2005	21.10.2008	21.10.2007
02-02/50-05-031				
02-02/50-05-033				
02-02/50-05-113				
02-02/17-05-003				
02-02/17-05-004				
02-02/17-06-002				
02-02/24-05-006	04/15/2008	04/15/2005	10/23/2007	04/23/2007
02-02/24-05-007	10/23/2007	04/23/2007		
02-02/50-05-075				
02-02/50-05-083				
02-02/50-05-088				