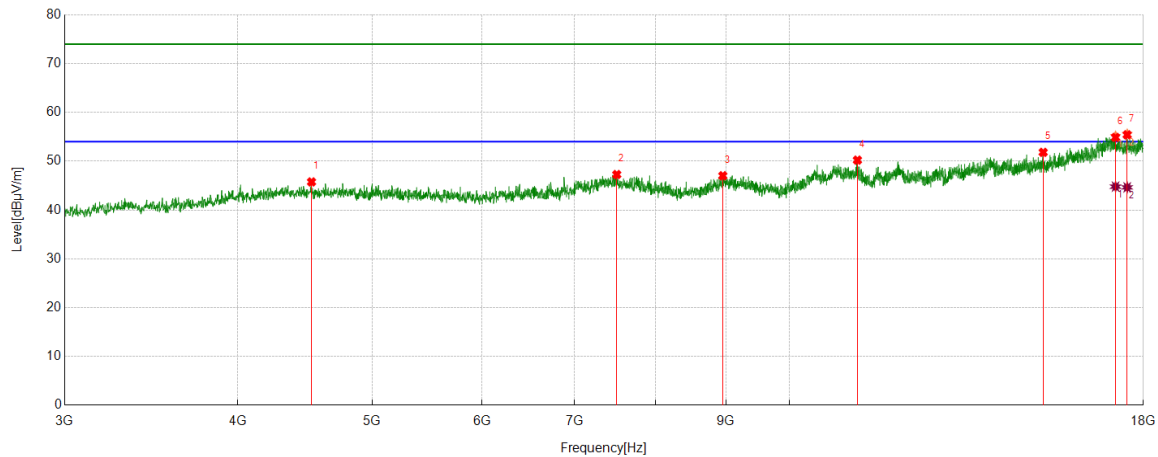




Test Mode	Channel	Polarization	Verdict
11G	2447 MHz	Vertical	PASS



PK Result:

No.	Frequency	Reading Level	Correct Factor	Result	Limit	Margin	Remark
	[MHz]	[dBuV/m]	[dB]	[dBuV/m]	[dBuV/m]	[dB]	
1	4520.8151	40.34	5.42	45.76	74.00	-28.24	Vertical
2	7506.1883	38.66	8.61	47.27	74.00	-26.73	Vertical
3	8951.994	37.96	9.06	47.02	74.00	-26.98	Vertical
4	11194.7743	38.26	11.96	50.22	74.00	-23.78	Vertical
5	15241.5302	36.87	14.95	51.82	74.00	-22.18	Vertical
6	17188.0235	37.01	18.15	55.16	74.00	-18.84	Vertical
7	17523.6905	37.78	17.79	55.57	74.00	-18.43	Vertical

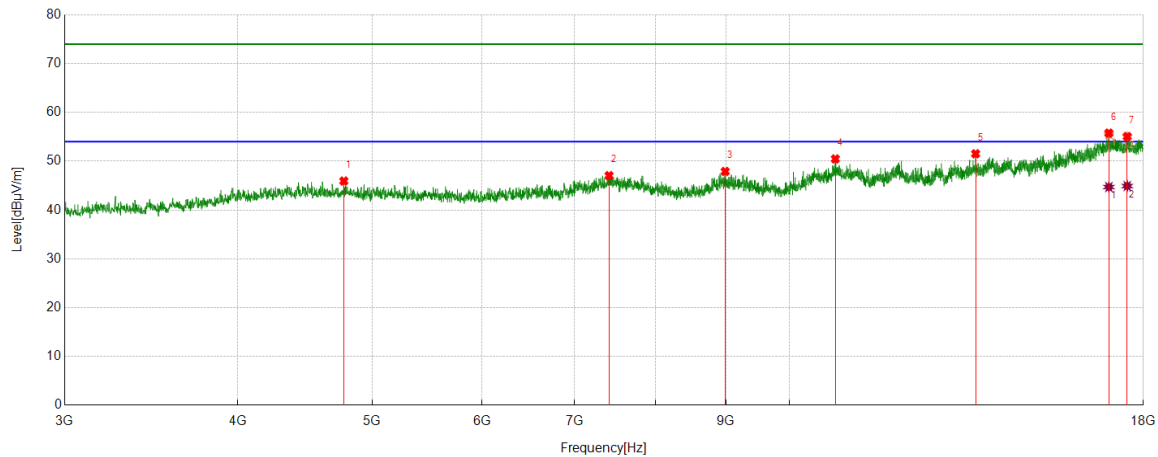
AV Result:

No.	Frequency	Reading Level	Correct Factor	Result	Limit	Margin	Remark
	[MHz]	[dBuV/m]	[dB]	[dBuV/m]	[dBuV/m]	[dB]	
1	17188.0235	26.64	18.15	44.79	54.00	-9.21	Vertical
2	17523.6905	26.85	17.79	44.64	54.00	-9.36	Vertical

- Note: 1. Measurement = Reading Level + Correct Factor.
2. If peak result complies with AV limit, AV Result is deemed to comply with AV limit.
3. Peak result: Peak detector, RBW: 1 MHz, VBW: 3 MHz.
4. Average result: Peak detector, RBW: 1 MHz, VBW: 1/T MHz(refer to clause 7.1.).
5. For above 3GHz part, filter losses were only considered in the spurious frequency bands and the authorized band was not corrected for HPF losses.
6. Only the worst case emission was recorded, if it complies with the limit, the other emissions deemed to comply with the limit.



Test Mode	Channel	Polarization	Verdict
11G	2462 MHz	Horizontal	PASS



PK Result:

No.	Frequency	Reading Level	Correct Factor	Result	Limit	Margin	Remark
	[MHz]	[dBuV/m]	[dB]	[dBuV/m]	[dBuV/m]	[dB]	
1	4770.2213	40.54	5.40	45.94	74.00	-28.06	Horizontal
2	7410.5513	38.39	8.66	47.05	74.00	-26.95	Horizontal
3	8987.6235	38.95	8.95	47.90	74.00	-26.10	Horizontal
4	10791.599	38.38	12.09	50.47	74.00	-23.53	Horizontal
5	13623.2029	38.50	13.03	51.53	74.00	-22.47	Horizontal
6	16998.6248	36.88	18.61	55.49	74.00	-18.51	Horizontal
7	17525.5657	37.16	17.83	54.99	74.00	-19.01	Horizontal

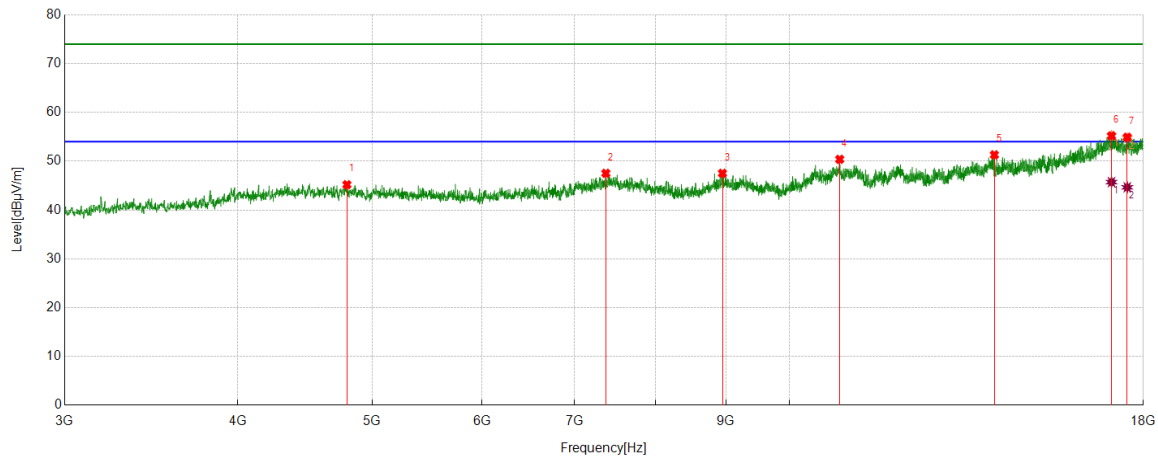
AV Result:

No.	Frequency	Reading Level	Correct Factor	Result	Limit	Margin	Remark
	[MHz]	[dBuV/m]	[dB]	[dBuV/m]	[dBuV/m]	[dB]	
1	16998.6248	26.10	18.61	44.71	54.00	-9.29	Horizontal
2	17525.5657	27.09	17.83	44.92	54.00	-9.08	Horizontal

- Note: 1. Measurement = Reading Level + Correct Factor.
2. If peak result complies with AV limit, AV Result is deemed to comply with AV limit.
3. Peak result: Peak detector, RBW: 1 MHz, VBW: 3 MHz.
4. Average result: Peak detector, RBW: 1 MHz, VBW: 1/T MHz(refer to clause 7.1.).
5. For above 3GHz part, filter losses were only considered in the spurious frequency bands and the authorized band was not corrected for HPF losses.
6. Only the worst case emission was recorded, if it complies with the limit, the other emissions deemed to comply with the limit.



Test Mode	Channel	Polarization	Verdict
11G	2462 MHz	Vertical	PASS



PK Result:

No.	Frequency	Reading Level	Correct Factor	Result	Limit	Margin	Remark
	[MHz]	[dBuV/m]	[dB]	[dBuV/m]	[dBuV/m]	[dB]	
1	4794.5993	39.26	5.93	45.19	74.00	-28.81	Vertical
2	7371.1714	39.05	8.47	47.52	74.00	-26.48	Vertical
3	8946.3683	38.54	8.98	47.52	74.00	-26.48	Vertical
4	10870.3588	38.23	12.16	50.39	74.00	-23.61	Vertical
5	14054.5068	37.32	13.99	51.31	74.00	-22.69	Vertical
6	17073.6342	36.25	19.02	55.27	74.00	-18.73	Vertical
7	17525.5657	36.95	17.83	54.78	74.00	-19.22	Vertical

AV Result:

No.	Frequency	Reading Level	Correct Factor	Result	Limit	Margin	Remark
	[MHz]	[dBuV/m]	[dB]	[dBuV/m]	[dBuV/m]	[dB]	
1	17073.6342	26.70	19.02	45.72	54.00	-8.28	Vertical
2	17525.5657	26.82	17.83	44.65	54.00	-9.35	Vertical

Note: 1. Measurement = Reading Level + Correct Factor.

2. If peak result complies with AV limit, AV Result is deemed to comply with AV limit.

3. Peak result: Peak detector, RBW: 1 MHz, VBW: 3 MHz.

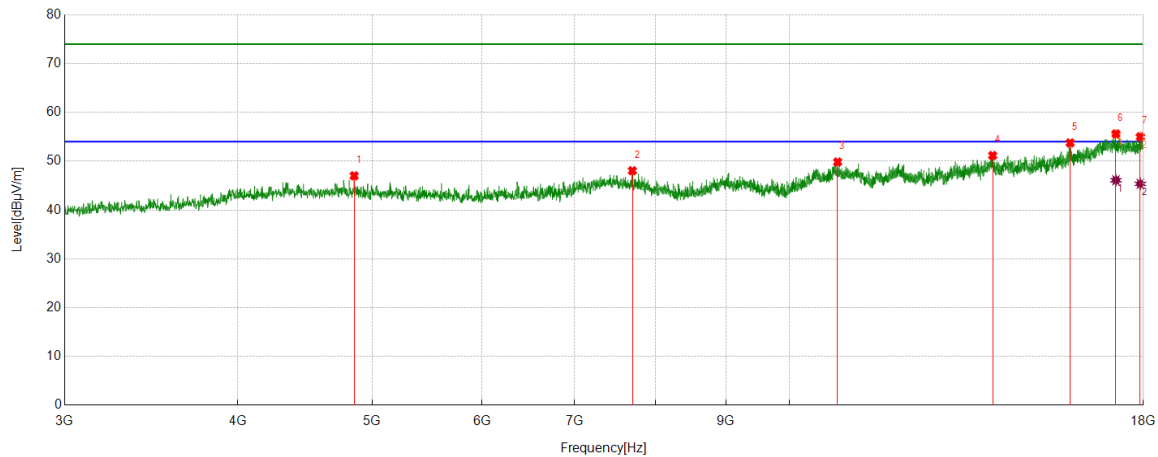
4. Average result: Peak detector, RBW: 1 MHz, VBW: 1/T MHz(refer to clause 7.1.).

5. For above 3GHz part, filter losses were only considered in the spurious frequency bands and the authorized band was not corrected for HPF losses.

6. Only the worst case emission was recorded, if it complies with the limit, the other emissions deemed to comply with the limit.



Test Mode	Channel	Polarization	Verdict
11N HT20	2412 MHz	Horizontal	PASS



PK Result:

No.	Frequency	Reading Level	Correct Factor	Result	Limit	Margin	Remark
	[MHz]	[dBuV/m]	[dB]	[dBuV/m]	[dBuV/m]	[dB]	
1	4852.7316	41.58	5.43	47.01	74.00	-26.99	Horizontal
2	7703.0879	39.63	8.42	48.05	74.00	-25.95	Horizontal
3	10832.8541	37.77	12.07	49.84	74.00	-24.16	Horizontal
4	14015.1269	36.90	14.27	51.17	74.00	-22.83	Horizontal
5	15939.1174	37.79	15.96	53.75	74.00	-20.25	Horizontal
6	17199.2749	37.09	18.35	55.44	74.00	-18.56	Horizontal
7	17909.9887	36.73	18.28	55.01	74.00	-18.99	Horizontal

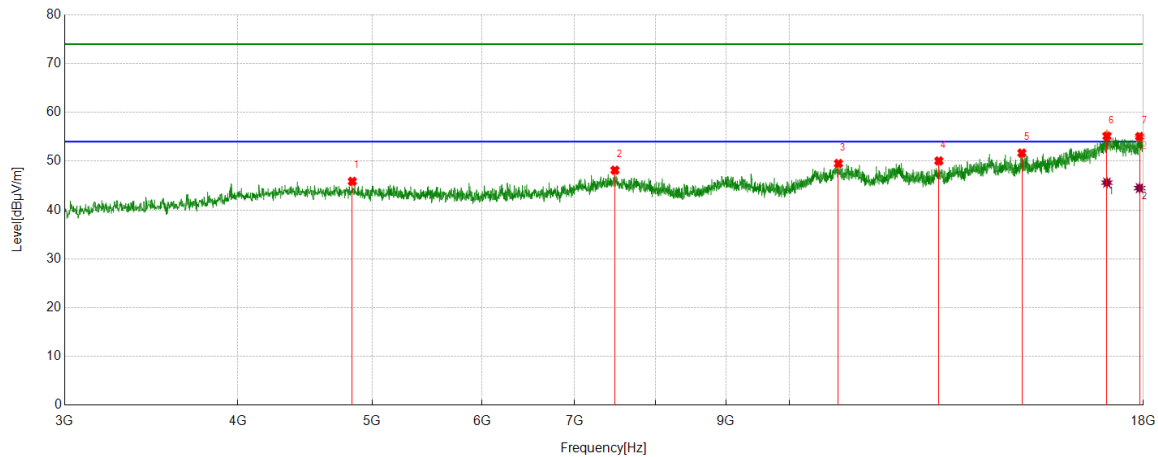
AV Result:

No.	Frequency	Reading Level	Correct Factor	Result	Limit	Margin	Remark
	[MHz]	[dBuV/m]	[dB]	[dBuV/m]	[dBuV/m]	[dB]	
1	17199.2749	27.75	18.35	46.10	54.00	-7.90	Horizontal
2	17909.9887	27.08	18.28	45.36	54.00	-8.64	Horizontal

- Note: 1. Measurement = Reading Level + Correct Factor.
2. If peak result complies with AV limit, AV Result is deemed to comply with AV limit.
3. Peak result: Peak detector, RBW: 1 MHz, VBW: 3 MHz.
4. Average result: Peak detector, RBW: 1 MHz, VBW: 1/T MHz(refer to clause 7.1.).
5. For above 3GHz part, filter losses were only considered in the spurious frequency bands and the authorized band was not corrected for HPF losses.
6. Only the worst case emission was recorded, if it complies with the limit, the other emissions deemed to comply with the limit.



Test Mode	Channel	Polarization	Verdict
11N HT20	2412 MHz	Vertical	PASS



PK Result:

No.	Frequency	Reading Level	Correct Factor	Result	Limit	Margin	Remark
	[MHz]	[dBuV/m]	[dB]	[dBuV/m]	[dBuV/m]	[dB]	
1	4837.7297	40.41	5.46	45.87	74.00	-28.13	Vertical
2	7483.6855	39.41	8.75	48.16	74.00	-25.84	Vertical
3	10847.856	37.16	12.37	49.53	74.00	-24.47	Vertical
4	12816.8521	38.41	11.65	50.06	74.00	-23.94	Vertical
5	14712.7141	37.98	13.69	51.67	74.00	-22.33	Vertical
6	16944.2430	37.02	18.41	55.43	74.00	-18.57	Vertical
7	17889.3612	36.31	18.53	54.84	74.00	-19.16	Vertical

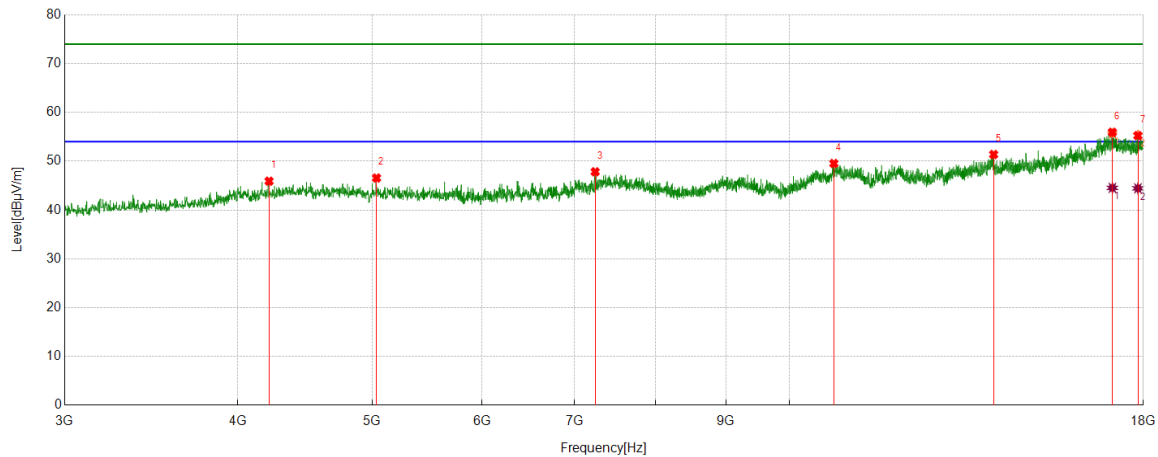
AV Result:

No.	Frequency	Reading Level	Correct Factor	Result	Limit	Margin	Remark
	[MHz]	[dBuV/m]	[dB]	[dBuV/m]	[dBuV/m]	[dB]	
1	16944.2430	27.20	18.41	45.61	54.00	-8.39	Vertical
2	17889.3612	25.97	18.53	44.50	54.00	-9.50	Vertical

- Note: 1. Measurement = Reading Level + Correct Factor.
2. If peak result complies with AV limit, AV Result is deemed to comply with AV limit.
3. Peak result: Peak detector, RBW: 1 MHz, VBW: 3 MHz.
4. Average result: Peak detector, RBW: 1 MHz, VBW: 1/T MHz(refer to clause 7.1.).
5. For above 3GHz part, filter losses were only considered in the spurious frequency bands and the authorized band was not corrected for HPF losses.
6. Only the worst case emission was recorded, if it complies with the limit, the other emissions deemed to comply with the limit.



Test Mode	Channel	Polarization	Verdict
11N HT20	2427 MHz	Horizontal	PASS



PK Result:

No.	Frequency	Reading Level	Correct Factor	Result	Limit	Margin	Remark
	[MHz]	[dBuV/m]	[dB]	[dBuV/m]	[dBuV/m]	[dB]	
1	4213.2767	40.88	5.03	45.91	74.00	-28.09	Horizontal
2	5036.5046	40.95	5.61	46.56	74.00	-27.44	Horizontal
3	7241.7802	39.22	8.61	47.83	74.00	-26.17	Horizontal
4	10765.3457	37.40	12.14	49.54	74.00	-24.46	Horizontal
5	14037.6297	37.05	14.33	51.38	74.00	-22.62	Horizontal
6	17098.0123	37.38	18.28	55.66	74.00	-18.34	Horizontal
7	17838.7298	37.28	18.09	55.37	74.00	-18.63	Horizontal

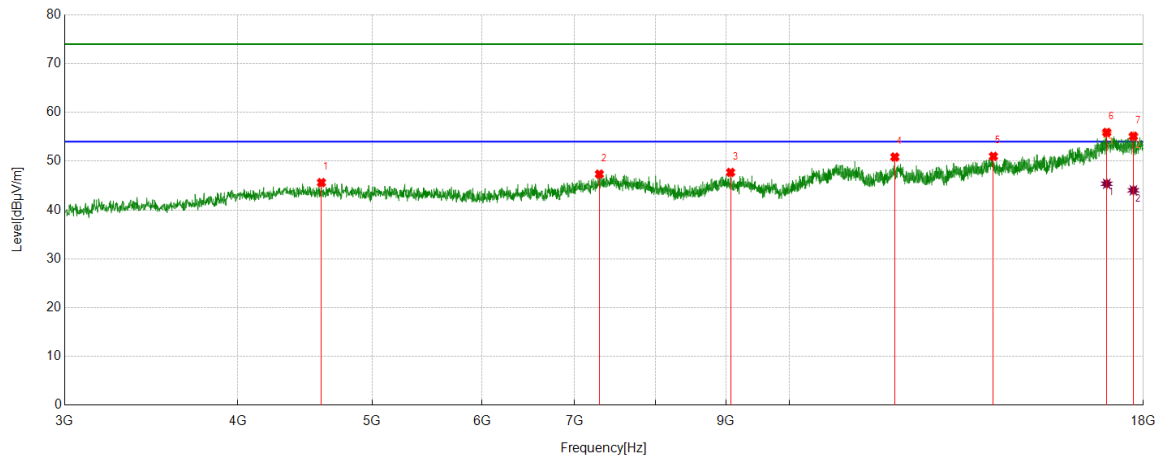
AV Result:

No.	Frequency	Reading Level	Correct Factor	Result	Limit	Margin	Remark
	[MHz]	[dBuV/m]	[dB]	[dBuV/m]	[dBuV/m]	[dB]	
1	17098.0123	26.26	18.28	44.54	54.00	-9.46	Horizontal
2	17838.7298	26.35	18.09	44.44	54.00	-9.56	Horizontal

- Note: 1. Measurement = Reading Level + Correct Factor.
2. If peak result complies with AV limit, AV Result is deemed to comply with AV limit.
3. Peak result: Peak detector, RBW: 1 MHz, VBW: 3 MHz.
4. Average result: Peak detector, RBW: 1 MHz, VBW: 1/T MHz(refer to clause 7.1.).
5. For above 3GHz part, filter losses were only considered in the spurious frequency bands and the authorized band was not corrected for HPF losses.
6. Only the worst case emission was recorded, if it complies with the limit, the other emissions deemed to comply with the limit.



Test Mode	Channel	Polarization	Verdict
11N HT20	2427 MHz	Vertical	PASS



PK Result:

No.	Frequency	Reading Level	Correct Factor	Result	Limit	Margin	Remark
	[MHz]	[dBuV/m]	[dB]	[dBuV/m]	[dBuV/m]	[dB]	
1	4595.8245	40.13	5.49	45.62	74.00	-28.38	Vertical
2	7292.4116	38.70	8.66	47.36	74.00	-26.64	Vertical
3	9068.2585	38.85	8.86	47.71	74.00	-26.29	Vertical
4	11912.9891	38.44	12.42	50.86	74.00	-23.14	Vertical
5	14032.004	36.37	14.63	51.00	74.00	-23.00	Vertical
6	16938.6173	37.22	18.45	55.67	74.00	-18.33	Vertical
7	17705.5882	37.4	17.68	55.08	74.00	-18.92	Vertical

AV Result:

No.	Frequency	Reading Level	Correct Factor	Result	Limit	Margin	Remark
	[MHz]	[dBuV/m]	[dB]	[dBuV/m]	[dBuV/m]	[dB]	
1	16938.6173	26.93	18.45	45.38	54.00	-8.62	Vertical
2	17705.5882	26.36	17.68	44.04	54.00	-9.96	Vertical

Note: 1. Measurement = Reading Level + Correct Factor.

2. If peak result complies with AV limit, AV Result is deemed to comply with AV limit.

3. Peak result: Peak detector, RBW: 1 MHz, VBW: 3 MHz.

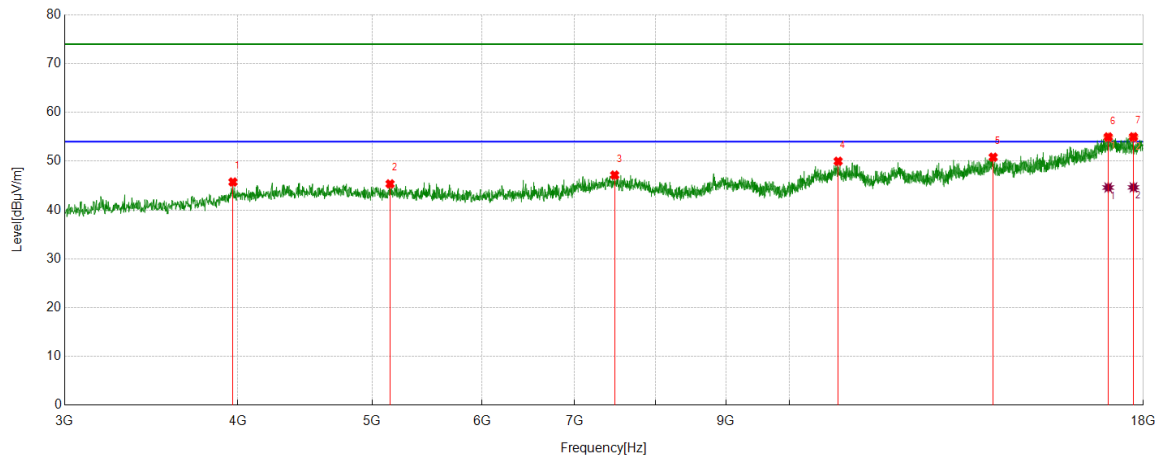
4. Average result: Peak detector, RBW: 1 MHz, VBW: 1/T MHz(refer to clause 7.1.).

5. For above 3GHz part, filter losses were only considered in the spurious frequency bands and the authorized band was not corrected for HPF losses.

6. Only the worst case emission was recorded, if it complies with the limit, the other emissions deemed to comply with the limit.



Test Mode	Channel	Polarization	Verdict
11N HT20	2437 MHz	Horizontal	PASS



PK Result:

No.	Frequency	Reading Level	Correct Factor	Result	Limit	Margin	Remark
	[MHz]	[dBuV/m]	[dB]	[dBuV/m]	[dBuV/m]	[dB]	
1	3967.621	41.34	4.39	45.73	74.00	-28.27	Horizontal
2	5150.8939	40.14	5.22	45.36	74.00	-28.64	Horizontal
3	7479.935	38.32	8.84	47.16	74.00	-26.84	Horizontal
4	10842.2303	37.78	12.21	49.99	74.00	-24.01	Horizontal
5	14026.3783	36.27	14.55	50.82	74.00	-23.18	Horizontal
6	16979.8725	36.01	18.75	54.76	74.00	-19.24	Horizontal
7	17707.4634	37.08	17.66	54.74	74.00	-19.26	Horizontal

AV Result:

No.	Frequency	Reading Level	Correct Factor	Result	Limit	Margin	Remark
	[MHz]	[dBuV/m]	[dB]	[dBuV/m]	[dBuV/m]	[dB]	
1	16979.8725	25.86	18.75	44.61	54.00	-9.39	Horizontal
2	17707.4634	26.98	17.66	44.64	54.00	-9.36	Horizontal

Note: 1. Measurement = Reading Level + Correct Factor.

2. If peak result complies with AV limit, AV Result is deemed to comply with AV limit.

3. Peak result: Peak detector, RBW: 1 MHz, VBW: 3 MHz.

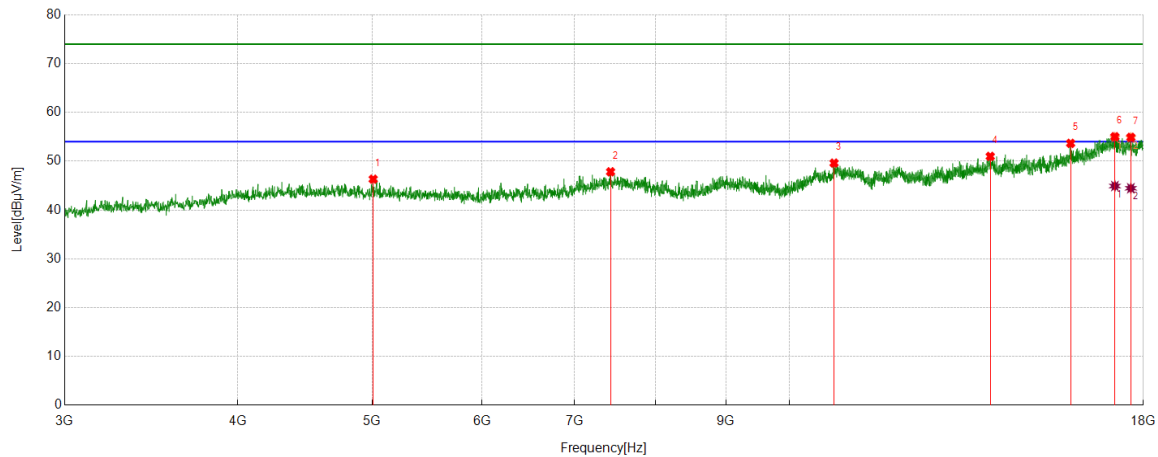
4. Average result: Peak detector, RBW: 1 MHz, VBW: 1/T MHz(refer to clause 7.1.).

5. For above 3GHz part, filter losses were only considered in the spurious frequency bands and the authorized band was not corrected for HPF losses.

6. Only the worst case emission was recorded, if it complies with the limit, the other emissions deemed to comply with the limit.



Test Mode	Channel	Polarization	Verdict
11N HT20	2437 MHz	Vertical	PASS



PK Result:

No.	Frequency	Reading Level	Correct Factor	Result	Limit	Margin	Remark
	[MHz]	[dBuV/m]	[dB]	[dBuV/m]	[dBuV/m]	[dB]	
1	5008.376	40.95	5.37	46.32	74.00	-27.68	Vertical
2	7429.3037	39.29	8.54	47.83	74.00	-26.17	Vertical
3	10769.0961	37.35	12.27	49.62	74.00	-24.38	Vertical
4	13958.8699	37.06	13.93	50.99	74.00	-23.01	Vertical
5	15952.244	37.59	16.07	53.66	74.00	-20.34	Vertical
6	17169.2712	36.51	18.36	54.87	74.00	-19.13	Vertical
7	17630.5788	37.57	17.25	54.82	74.00	-19.18	Vertical

AV Result:

No.	Frequency	Reading Level	Correct Factor	Result	Limit	Margin	Remark
	[MHz]	[dBuV/m]	[dB]	[dBuV/m]	[dBuV/m]	[dB]	
1	17169.2712	26.56	18.36	44.92	54.00	-9.08	Vertical
2	17630.5788	27.21	17.25	44.46	54.00	-9.54	Vertical

Note: 1. Measurement = Reading Level + Correct Factor.

2. If peak result complies with AV limit, AV Result is deemed to comply with AV limit.

3. Peak result: Peak detector, RBW: 1 MHz, VBW: 3 MHz.

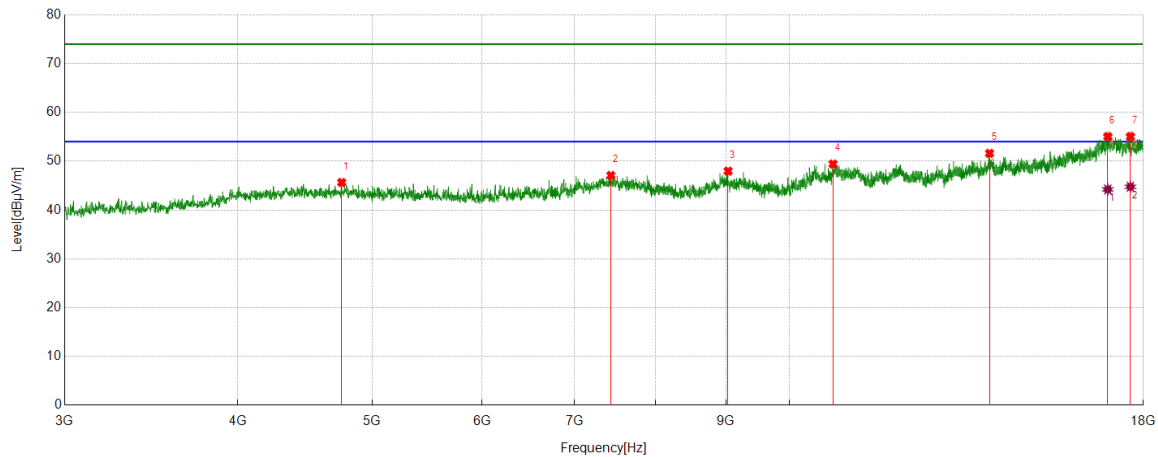
4. Average result: Peak detector, RBW: 1 MHz, VBW: 1/T MHz(refer to clause 7.1.).

5. For above 3GHz part, filter losses were only considered in the spurious frequency bands and the authorized band was not corrected for HPF losses.

6. Only the worst case emission was recorded, if it complies with the limit, the other emissions deemed to comply with the limit.



Test Mode	Channel	Polarization	Verdict
11N HT20	2447 MHz	Horizontal	PASS



PK Result:

No.	Frequency	Reading Level	Correct Factor	Result	Limit	Margin	Remark
	[MHz]	[dBuV/m]	[dB]	[dBuV/m]	[dBuV/m]	[dB]	
1	4753.3442	40.30	5.34	45.64	74.00	-28.36	Horizontal
2	7433.0541	38.51	8.57	47.08	74.00	-26.92	Horizontal
3	9030.7538	39.01	8.95	47.96	74.00	-26.04	Horizontal
4	10750.3438	37.20	12.22	49.42	74.00	-24.58	Horizontal
5	13941.9927	37.25	14.36	51.61	74.00	-22.39	Horizontal
6	16968.6211	36.51	18.48	54.99	74.00	-19.01	Horizontal
7	17617.4522	37.39	17.68	55.07	74.00	-18.93	Horizontal

AV Result:

No.	Frequency	Reading Level	Correct Factor	Result	Limit	Margin	Remark
	[MHz]	[dBuV/m]	[dB]	[dBuV/m]	[dBuV/m]	[dB]	
1	16968.6211	25.74	18.48	44.22	54.00	-9.78	Horizontal
2	17617.4522	27.08	17.68	44.76	54.00	-9.24	Horizontal

Note: 1. Measurement = Reading Level + Correct Factor.

2. If peak result complies with AV limit, AV Result is deemed to comply with AV limit.

3. Peak result: Peak detector, RBW: 1 MHz, VBW: 3 MHz.

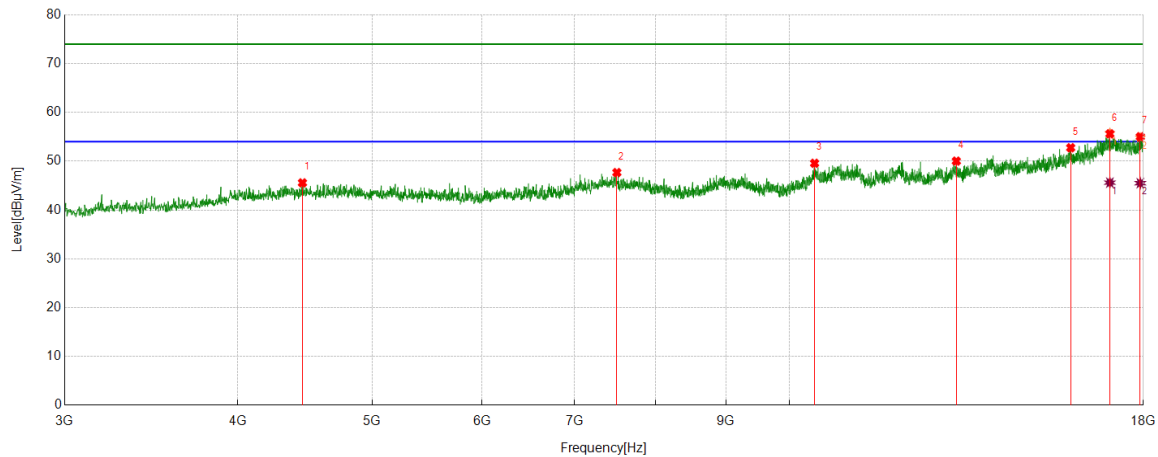
4. Average result: Peak detector, RBW: 1 MHz, VBW: 1/T MHz(refer to clause 7.1.).

5. For above 3GHz part, filter losses were only considered in the spurious frequency bands and the authorized band was not corrected for HPF losses.

6. Only the worst case emission was recorded, if it complies with the limit, the other emissions deemed to comply with the limit.



Test Mode	Channel	Polarization	Verdict
11N HT20	2447 MHz	Vertical	PASS



PK Result:

No.	Frequency	Reading Level	Correct Factor	Result	Limit	Margin	Remark
	[MHz]	[dBuV/m]	[dB]	[dBuV/m]	[dBuV/m]	[dB]	
1	4453.3067	39.95	5.62	45.57	74.00	-28.43	Vertical
2	7508.0635	39.07	8.61	47.68	74.00	-26.32	Vertical
3	10425.9282	38.12	11.46	49.58	74.00	-24.42	Vertical
4	13193.7742	37.57	12.45	50.02	74.00	-23.98	Vertical
5	15954.1193	36.71	16.05	52.76	74.00	-21.24	Vertical
6	17026.7533	36.93	18.81	55.74	74.00	-18.26	Vertical
7	17909.9887	36.56	18.28	54.84	74.00	-19.16	Vertical

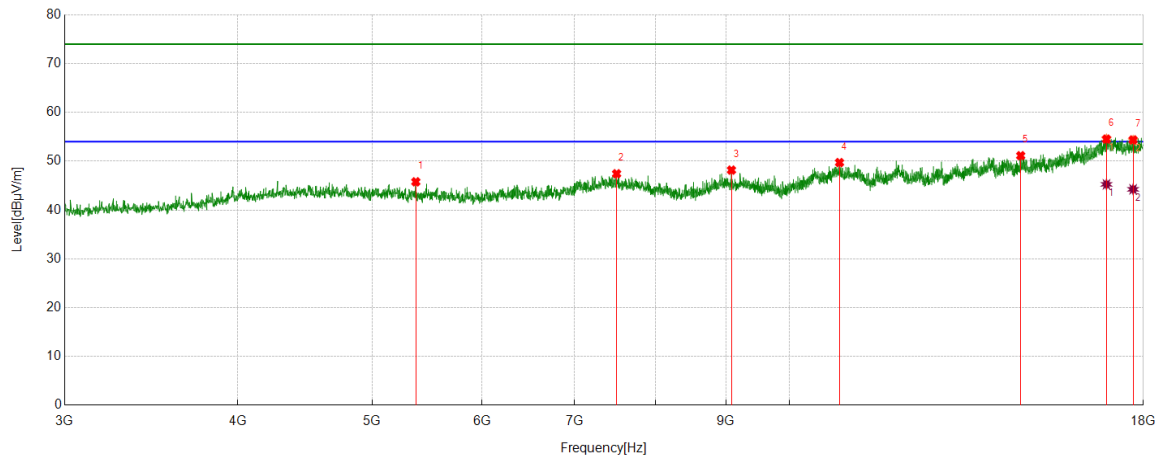
AV Result:

No.	Frequency	Reading Level	Correct Factor	Result	Limit	Margin	Remark
	[MHz]	[dBuV/m]	[dB]	[dBuV/m]	[dBuV/m]	[dB]	
1	17026.7533	26.80	18.81	45.61	54.00	-8.39	Vertical
2	17909.9887	27.22	18.28	45.50	54.00	-8.50	Vertical

- Note: 1. Measurement = Reading Level + Correct Factor.
2. If peak result complies with AV limit, AV Result is deemed to comply with AV limit.
3. Peak result: Peak detector, RBW: 1 MHz, VBW: 3 MHz.
4. Average result: Peak detector, RBW: 1 MHz, VBW: 1/T MHz(refer to clause 7.1.).
5. For above 3GHz part, filter losses were only considered in the spurious frequency bands and the authorized band was not corrected for HPF losses.
6. Only the worst case emission was recorded, if it complies with the limit, the other emissions deemed to comply with the limit.



Test Mode	Channel	Polarization	Verdict
11N HT20	2462 MHz	Horizontal	PASS



PK Result:

No.	Frequency	Reading Level	Correct Factor	Result	Limit	Margin	Remark
	[MHz]	[dBuV/m]	[dB]	[dBuV/m]	[dBuV/m]	[dB]	
1	5375.922	40.60	5.18	45.78	74.00	-28.22	Horizontal
2	7504.313	38.83	8.60	47.43	74.00	-26.57	Horizontal
3	9081.3852	39.10	9.08	48.18	74.00	-25.82	Horizontal
4	10866.6083	37.56	12.16	49.72	74.00	-24.28	Horizontal
5	14682.7103	37.23	13.91	51.14	74.00	-22.86	Horizontal
6	16931.1164	36.18	18.38	54.56	74.00	-19.44	Horizontal
7	17696.2120	36.44	17.83	54.27	74.00	-19.73	Horizontal

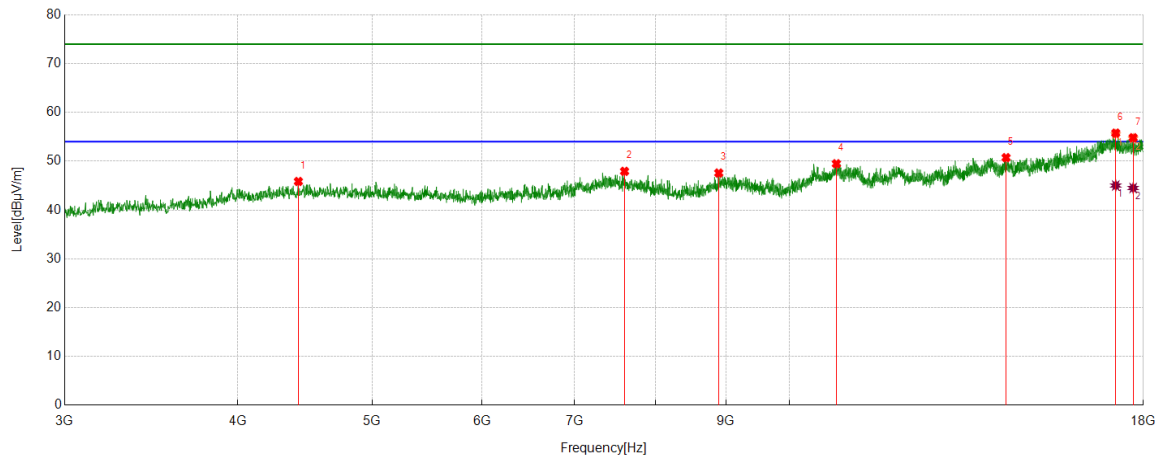
AV Result:

No.	Frequency	Reading Level	Correct Factor	Result	Limit	Margin	Remark
	[MHz]	[dBuV/m]	[dB]	[dBuV/m]	[dBuV/m]	[dB]	
1	16931.1164	26.88	18.38	45.26	54.00	-8.74	Horizontal
2	17696.2120	26.41	17.83	44.24	54.00	-9.76	Horizontal

- Note: 1. Measurement = Reading Level + Correct Factor.
2. If peak result complies with AV limit, AV Result is deemed to comply with AV limit.
3. Peak result: Peak detector, RBW: 1 MHz, VBW: 3 MHz.
4. Average result: Peak detector, RBW: 1 MHz, VBW: 1/T MHz(refer to clause 7.1.).
5. For above 3GHz part, filter losses were only considered in the spurious frequency bands and the authorized band was not corrected for HPF losses.
6. Only the worst case emission was recorded, if it complies with the limit, the other emissions deemed to comply with the limit.



Test Mode	Channel	Polarization	Verdict
11N HT20	2462 MHz	Vertical	PASS



PK Result:

No.	Frequency	Reading Level	Correct Factor	Result	Limit	Margin	Remark
	[MHz]	[dBuV/m]	[dB]	[dBuV/m]	[dBuV/m]	[dB]	
1	4423.3029	40.64	5.21	45.85	74.00	-28.15	Vertical
2	7603.7005	39.28	8.65	47.93	74.00	-26.07	Vertical
3	8891.9865	39.16	8.42	47.58	74.00	-26.42	Vertical
4	10810.3513	37.27	12.21	49.48	74.00	-24.52	Vertical
5	14330.1663	36.61	14.12	50.73	74.00	-23.27	Vertical
6	17193.6492	37.25	18.24	55.49	74.00	-18.51	Vertical
7	17698.0873	36.83	17.80	54.63	74.00	-19.37	Vertical

AV Result:

No.	Frequency	Reading Level	Correct Factor	Result	Limit	Margin	Remark
	[MHz]	[dBuV/m]	[dB]	[dBuV/m]	[dBuV/m]	[dB]	
1	17193.6492	26.78	18.24	45.02	54.00	-8.98	Vertical
2	17698.0873	26.71	17.80	44.51	54.00	-9.49	Vertical

Note: 1. Measurement = Reading Level + Correct Factor.

2. If peak result complies with AV limit, AV Result is deemed to comply with AV limit.

3. Peak result: Peak detector, RBW: 1 MHz, VBW: 3 MHz.

4. Average result: Peak detector, RBW: 1 MHz, VBW: 1/T MHz(refer to clause 7.1.).

5. For above 3GHz part, filter losses were only considered in the spurious frequency bands and the authorized band was not corrected for HPF losses.

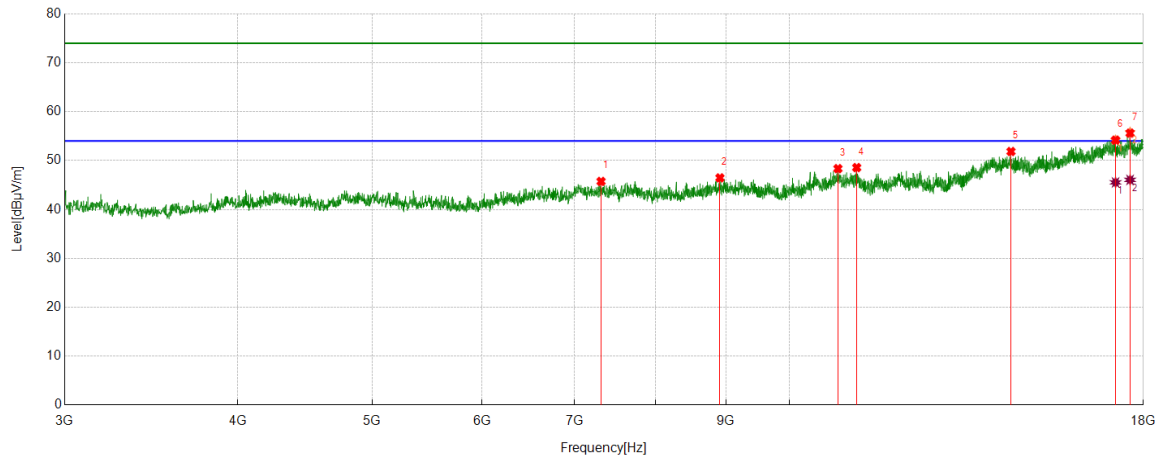
6. Only the worst case emission was recorded, if it complies with the limit, the other emissions deemed to comply with the limit.



Antenna Type 1: PCB Antenna

HARMONICS AND SPURIOUS EMISSIONS

Test Mode	Channel	Polarization	Verdict
11B	2412 MHz	Horizontal	PASS



PK Result:

No.	Frequency	Reading Level	Correct Factor	Result	Limit	Margin	Remark
	[MHz]	[dBuV/m]	[dB]	[dBuV/m]	[dBuV/m]	[dB]	
1	7313.0391	37.29	8.44	45.73	74.00	-28.27	Horizontal
2	8908.8636	37.21	9.25	46.46	74.00	-27.54	Horizontal
3	10838.4798	36.23	12.12	48.35	74.00	-25.65	Horizontal
4	11181.6477	36.58	11.98	48.56	74.00	-25.44	Horizontal
5	14448.306	35.80	16.05	51.85	74.00	-22.15	Horizontal
6	17188.0235	35.05	19.13	54.18	74.00	-19.82	Horizontal
7	17608.076	36.16	19.63	55.79	74.00	-18.21	Horizontal

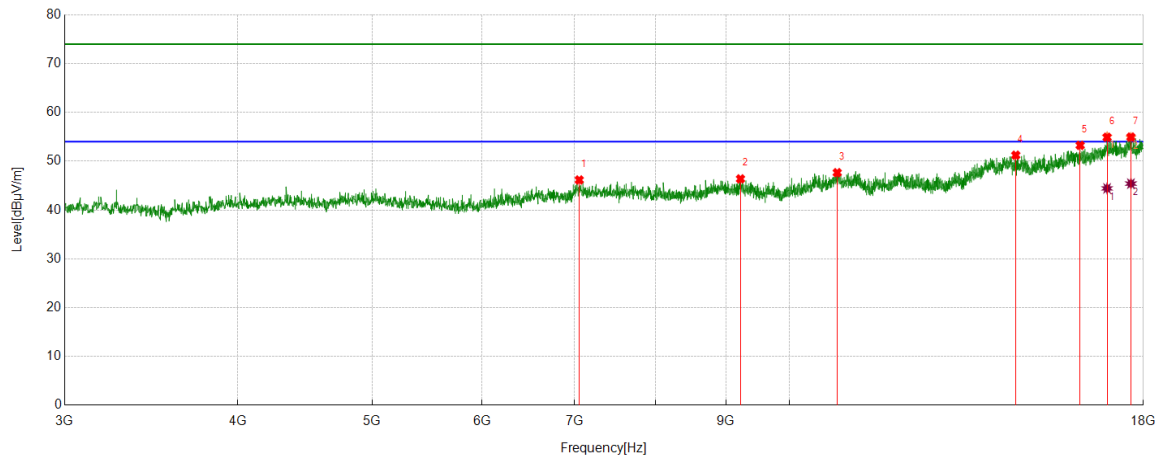
AV Result:

No.	Frequency	Reading Level	Correct Factor	Result	Limit	Margin	Remark
	[MHz]	[dBuV/m]	[dB]	[dBuV/m]	[dBuV/m]	[dB]	
1	17188.0235	26.40	19.13	45.53	54.00	-8.47	Horizontal
2	17608.076	26.42	19.63	46.05	54.00	-7.95	Horizontal

- Note: 1. Measurement = Reading Level + Correct Factor.
2. If peak result complies with AV limit, AV Result is deemed to comply with AV limit.
3. Peak result: Peak detector, RBW: 1 MHz, VBW: 3 MHz.
4. Average result: Peak detector, RBW: 1 MHz, VBW: 1/T MHz(refer to clause 7.1.).
5. For above 3GHz part, filter losses were only considered in the spurious frequency bands and the authorized band was not corrected for HPF losses.
6. Only the worst case emission was recorded, if it complies with the limit, the other emissions deemed to comply with the limit.



Test Mode	Channel	Polarization	Verdict
11B	2412 MHz	Vertical	PASS



PK Result:

No.	Frequency	Reading Level	Correct Factor	Result	Limit	Margin	Remark
	[MHz]	[dBuV/m]	[dB]	[dBuV/m]	[dBuV/m]	[dB]	
1	7052.3815	36.88	9.28	46.16	74.00	-27.84	Vertical
2	9218.2773	37.06	9.32	46.38	74.00	-27.62	Vertical
3	10825.3532	35.43	12.22	47.65	74.00	-26.35	Vertical
4	14562.6953	35.03	16.20	51.23	74.00	-22.77	Vertical
5	16207.2759	35.94	17.31	53.25	74.00	-20.75	Vertical
6	16947.9935	35.55	19.47	55.02	74.00	-18.98	Vertical
7	17632.4541	35.4	19.46	54.86	74.00	-19.14	Vertical

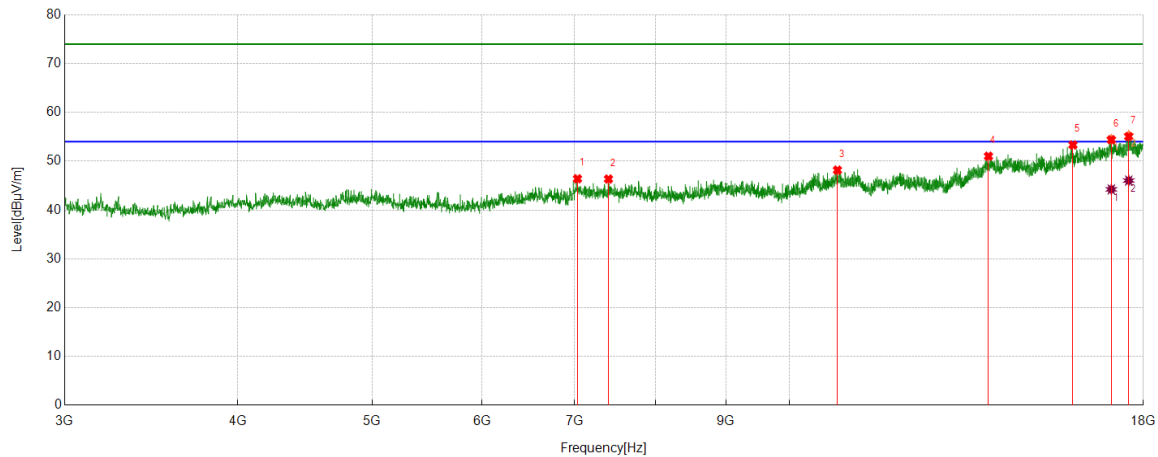
AV Result:

No.	Frequency	Reading Level	Correct Factor	Result	Limit	Margin	Remark
	[MHz]	[dBuV/m]	[dB]	[dBuV/m]	[dBuV/m]	[dB]	
1	16947.9935	24.96	19.47	44.43	54.00	-9.57	Vertical
2	17632.4541	25.95	19.46	45.41	54.00	-8.59	Vertical

- Note: 1. Measurement = Reading Level + Correct Factor.
2. If peak result complies with AV limit, AV Result is deemed to comply with AV limit.
3. Peak result: Peak detector, RBW: 1 MHz, VBW: 3 MHz.
4. Average result: Peak detector, RBW: 1 MHz, VBW: 1/T MHz(refer to clause 7.1.).
5. For above 3GHz part, filter losses were only considered in the spurious frequency bands and the authorized band was not corrected for HPF losses.
6. Only the worst case emission was recorded, if it complies with the limit, the other emissions deemed to comply with the limit.



Test Mode	Channel	Polarization	Verdict
11B	2417 MHz	Horizontal	PASS



PK Result:

No.	Frequency	Reading Level	Correct Factor	Result	Limit	Margin	Remark
	[MHz]	[dBuV/m]	[dB]	[dBuV/m]	[dBuV/m]	[dB]	
1	7031.754	37.23	9.17	46.40	74.00	-27.60	Horizontal
2	7403.0504	37.91	8.44	46.35	74.00	-27.65	Horizontal
3	10829.1036	35.94	12.23	48.17	74.00	-25.83	Horizontal
4	13917.6147	35.55	15.47	51.02	74.00	-22.98	Horizontal
5	16014.1268	35.64	17.69	53.33	74.00	-20.67	Horizontal
6	17068.0085	34.68	19.81	54.49	74.00	-19.51	Horizontal
7	17568.6961	35.33	19.99	55.32	74.00	-18.68	Horizontal

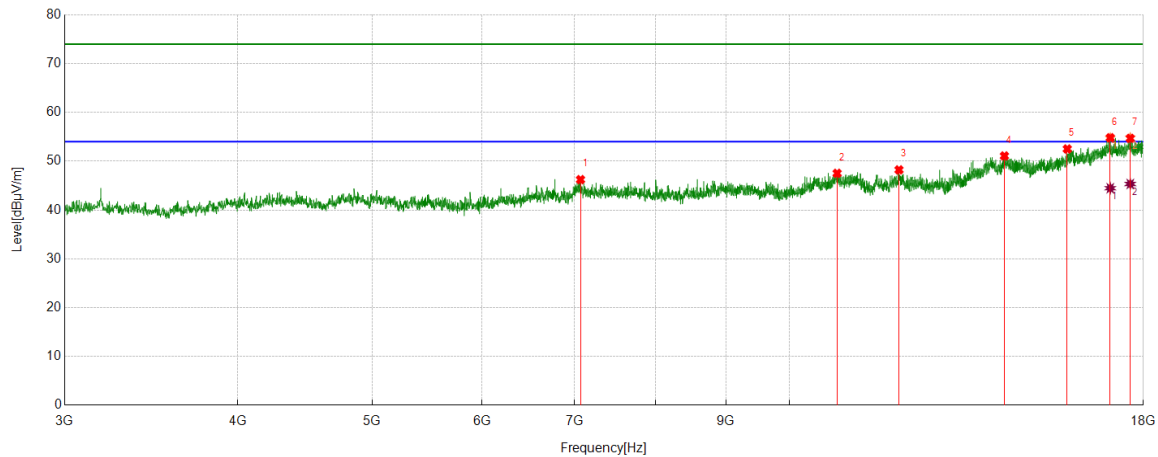
AV Result:

No.	Frequency	Reading Level	Correct Factor	Result	Limit	Margin	Remark
	[MHz]	[dBuV/m]	[dB]	[dBuV/m]	[dBuV/m]	[dB]	
1	17068.0085	24.42	19.81	44.23	54.00	-9.77	Horizontal
2	17568.6961	26.05	19.99	46.04	54.00	-7.96	Horizontal

- Note: 1. Measurement = Reading Level + Correct Factor.
2. If peak result complies with AV limit, AV Result is deemed to comply with AV limit.
3. Peak result: Peak detector, RBW: 1 MHz, VBW: 3 MHz.
4. Average result: Peak detector, RBW: 1 MHz, VBW: 1/T MHz(refer to clause 7.1.).
5. For above 3GHz part, filter losses were only considered in the spurious frequency bands and the authorized band was not corrected for HPF losses.
6. Only the worst case emission was recorded, if it complies with the limit, the other emissions deemed to comply with the limit.



Test Mode	Channel	Polarization	Verdict
11B	2417 MHz	Vertical	PASS



PK Result:

No.	Frequency	Reading Level	Correct Factor	Result	Limit	Margin	Remark
	[MHz]	[dBuV/m]	[dB]	[dBuV/m]	[dBuV/m]	[dB]	
1	7067.3834	37.03	9.20	46.23	74.00	-27.77	Vertical
2	10823.4779	35.30	12.22	47.52	74.00	-26.48	Vertical
3	11995.4994	35.32	12.91	48.23	74.00	-25.77	Vertical
4	14290.7863	35.10	15.98	51.08	74.00	-22.92	Vertical
5	15864.108	35.84	16.67	52.51	74.00	-21.49	Vertical
6	17038.0048	35.37	19.41	54.78	74.00	-19.22	Vertical
7	17613.7017	35.34	19.50	54.84	74.00	-19.16	Vertical

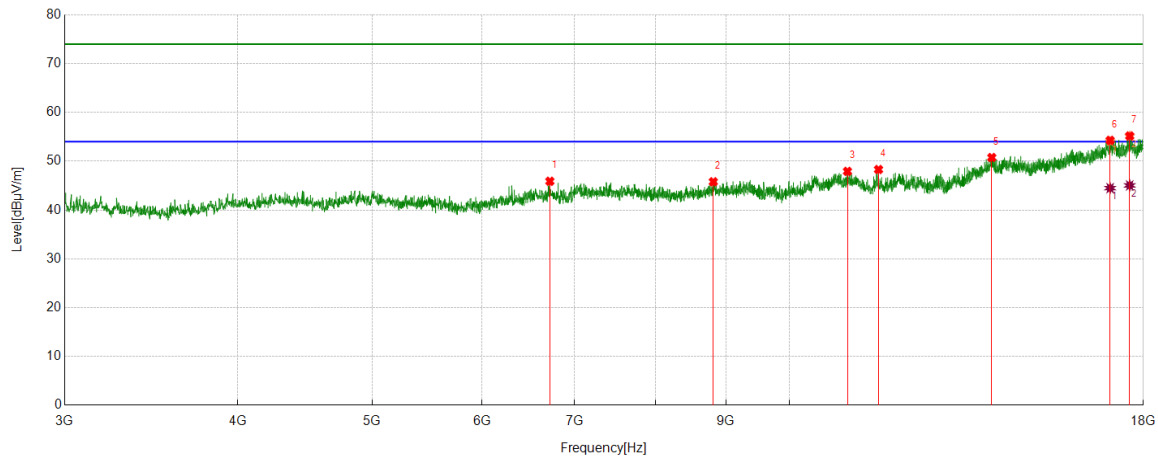
AV Result:

No.	Frequency	Reading Level	Correct Factor	Result	Limit	Margin	Remark
	[MHz]	[dBuV/m]	[dB]	[dBuV/m]	[dBuV/m]	[dB]	
1	17038.0048	25.06	19.41	44.47	54.00	-9.53	Vertical
2	17613.7017	25.84	19.50	45.34	54.00	-8.66	Vertical

- Note: 1. Measurement = Reading Level + Correct Factor.
2. If peak result complies with AV limit, AV Result is deemed to comply with AV limit.
3. Peak result: Peak detector, RBW: 1 MHz, VBW: 3 MHz.
4. Average result: Peak detector, RBW: 1 MHz, VBW: 1/T MHz(refer to clause 7.1.).
5. For above 3GHz part, filter losses were only considered in the spurious frequency bands and the authorized band was not corrected for HPF losses.
6. Only the worst case emission was recorded, if it complies with the limit, the other emissions deemed to comply with the limit.



Test Mode	Channel	Polarization	Verdict
11B	2437 MHz	Horizontal	PASS



PK Result:

No.	Frequency	Reading Level	Correct Factor	Result	Limit	Margin	Remark
	[MHz]	[dBuV/m]	[dB]	[dBuV/m]	[dBuV/m]	[dB]	
1	6716.7146	36.91	8.98	45.89	74.00	-28.11	Horizontal
2	8811.3514	36.69	9.10	45.79	74.00	-28.21	Horizontal
3	11011.0014	35.47	12.45	47.92	74.00	-26.08	Horizontal
4	11594.1993	36.79	11.51	48.30	74.00	-25.70	Horizontal
5	13994.4993	34.91	15.85	50.76	74.00	-23.24	Horizontal
6	17034.2543	34.66	19.38	54.04	74.00	-19.96	Horizontal
7	17596.8246	35.51	19.61	55.12	74.00	-18.88	Horizontal

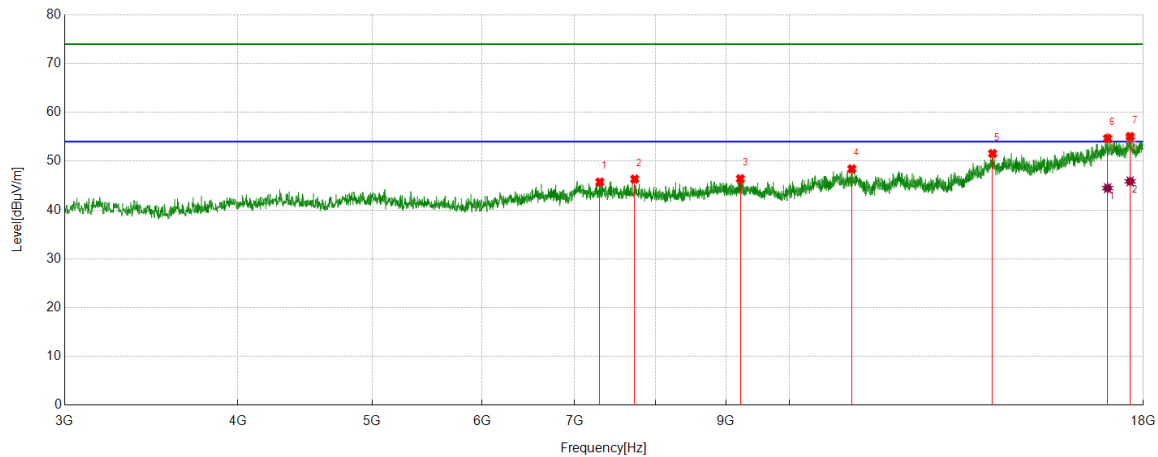
AV Result:

No.	Frequency	Reading Level	Correct Factor	Result	Limit	Margin	Remark
	[MHz]	[dBuV/m]	[dB]	[dBuV/m]	[dBuV/m]	[dB]	
1	17034.2543	25.11	19.38	44.49	54.00	-9.51	Horizontal
2	17596.8246	25.43	19.61	45.04	54.00	-8.96	Horizontal

- Note: 1. Measurement = Reading Level + Correct Factor.
2. If peak result complies with AV limit, AV Result is deemed to comply with AV limit.
3. Peak result: Peak detector, RBW: 1 MHz, VBW: 3 MHz.
4. Average result: Peak detector, RBW: 1 MHz, VBW: 1/T MHz(refer to clause 7.1.).
5. For above 3GHz part, filter losses were only considered in the spurious frequency bands and the authorized band was not corrected for HPF losses.
6. Only the worst case emission was recorded, if it complies with the limit, the other emissions deemed to comply with the limit.



Test Mode	Channel	Polarization	Verdict
11B	2437 MHz	Vertical	PASS



PK Result:

No.	Frequency	Reading Level	Correct Factor	Result	Limit	Margin	Remark
	[MHz]	[dBuV/m]	[dB]	[dBuV/m]	[dBuV/m]	[dB]	
1	7298.0373	37.27	8.46	45.73	74.00	-28.27	Vertical
2	7733.0916	37.76	8.58	46.34	74.00	-27.66	Vertical
3	9216.402	37.07	9.34	46.41	74.00	-27.59	Vertical
4	11091.6365	36.10	12.33	48.43	74.00	-25.57	Vertical
5	14013.2517	35.71	15.86	51.57	74.00	-22.43	Vertical
6	16962.9954	34.99	19.82	54.81	74.00	-19.19	Vertical
7	17609.9512	35.14	19.65	54.79	74.00	-19.21	Vertical

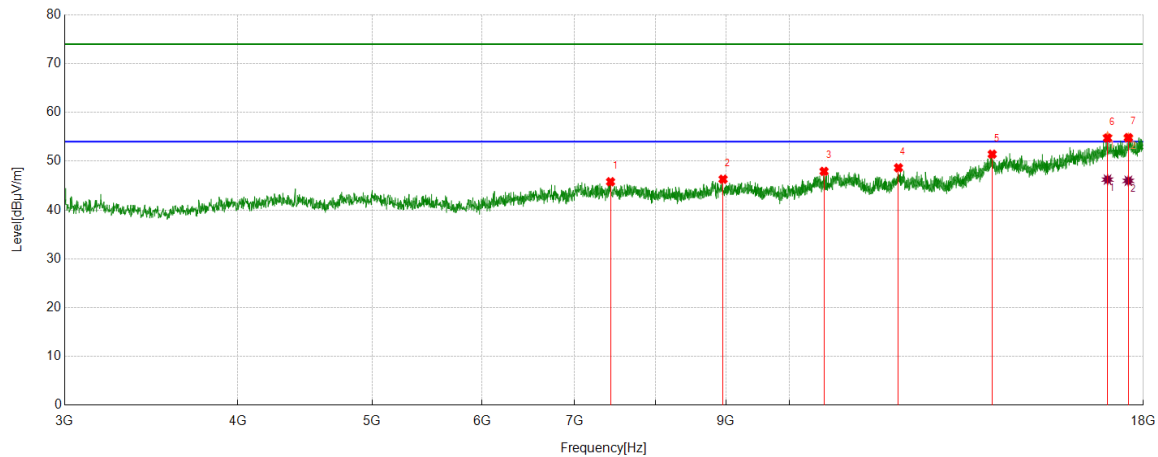
AV Result:

No.	Frequency	Reading Level	Correct Factor	Result	Limit	Margin	Remark
	[MHz]	[dBuV/m]	[dB]	[dBuV/m]	[dBuV/m]	[dB]	
1	16962.9954	24.66	19.82	44.48	54.00	-9.52	Vertical
2	17609.9512	26.22	19.65	45.87	54.00	-8.13	Vertical

- Note: 1. Measurement = Reading Level + Correct Factor.
2. If peak result complies with AV limit, AV Result is deemed to comply with AV limit.
3. Peak result: Peak detector, RBW: 1 MHz, VBW: 3 MHz.
4. Average result: Peak detector, RBW: 1 MHz, VBW: 1/T MHz(refer to clause 7.1.).
5. For above 3GHz part, filter losses were only considered in the spurious frequency bands and the authorized band was not corrected for HPF losses.
6. Only the worst case emission was recorded, if it complies with the limit, the other emissions deemed to comply with the limit.



Test Mode	Channel	Polarization	Verdict
11B	2457 MHz	Horizontal	PASS



PK Result:

No.	Frequency	Reading Level	Correct Factor	Result	Limit	Margin	Remark
	[MHz]	[dBuV/m]	[dB]	[dBuV/m]	[dBuV/m]	[dB]	
1	7429.3037	37.27	8.52	45.79	74.00	-28.21	Horizontal
2	8955.7445	36.85	9.46	46.31	74.00	-27.69	Horizontal
3	10590.9489	36.08	11.84	47.92	74.00	-26.08	Horizontal
4	11984.248	35.89	12.76	48.65	74.00	-25.35	Horizontal
5	14003.8755	35.60	15.83	51.43	74.00	-22.57	Horizontal
6	16961.1201	35.24	19.78	55.02	74.00	-18.98	Horizontal
7	17557.4447	35.41	19.38	54.79	74.00	-19.21	Horizontal

AV Result:

No.	Frequency	Reading Level	Correct Factor	Result	Limit	Margin	Remark
	[MHz]	[dBuV/m]	[dB]	[dBuV/m]	[dBuV/m]	[dB]	
1	16961.1201	26.46	19.78	46.24	54.00	-7.76	Horizontal
2	17557.4447	26.60	19.38	45.98	54.00	-8.02	Horizontal

Note: 1. Measurement = Reading Level + Correct Factor.

2. If peak result complies with AV limit, AV Result is deemed to comply with AV limit.

3. Peak result: Peak detector, RBW: 1 MHz, VBW: 3 MHz.

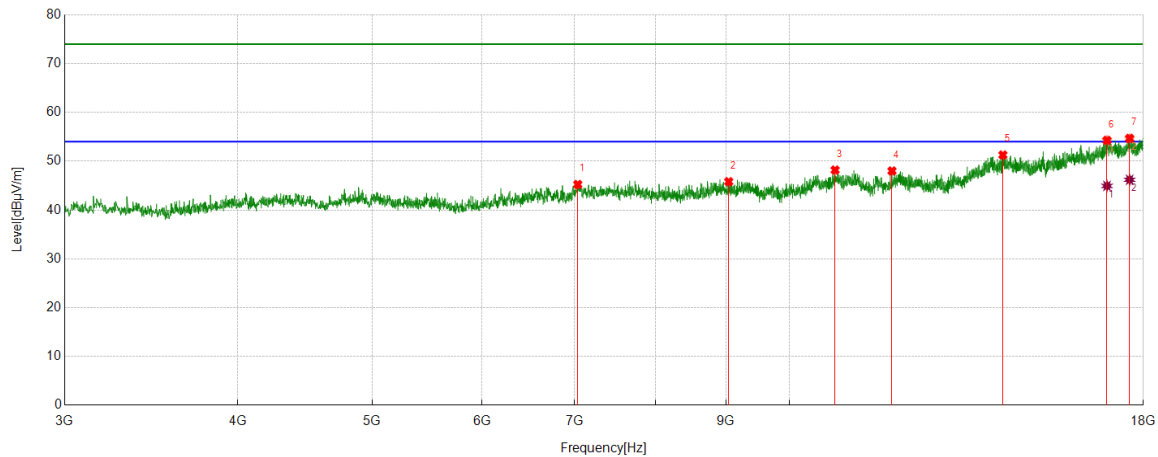
4. Average result: Peak detector, RBW: 1 MHz, VBW: 1/T MHz(refer to clause 7.1.).

5. For above 3GHz part, filter losses were only considered in the spurious frequency bands and the authorized band was not corrected for HPF losses.

6. Only the worst case emission was recorded, if it complies with the limit, the other emissions deemed to comply with the limit.



Test Mode	Channel	Polarization	Verdict
11B	2457 MHz	Vertical	PASS



PK Result:

No.	Frequency	Reading Level	Correct Factor	Result	Limit	Margin	Remark
	[MHz]	[dBuV/m]	[dB]	[dBuV/m]	[dBuV/m]	[dB]	
1	7035.5044	36.07	9.17	45.24	74.00	-28.76	Vertical
2	9040.13	36.25	9.56	45.81	74.00	-28.19	Vertical
3	10787.8485	36.17	12.02	48.19	74.00	-25.81	Vertical
4	11856.7321	35.99	12.01	48.00	74.00	-26.00	Vertical
5	14255.1569	35.31	15.97	51.28	74.00	-22.72	Vertical
6	16946.1183	34.78	19.45	54.23	74.00	-19.77	Vertical
7	17594.9494	34.95	19.65	54.60	74.00	-19.40	Vertical

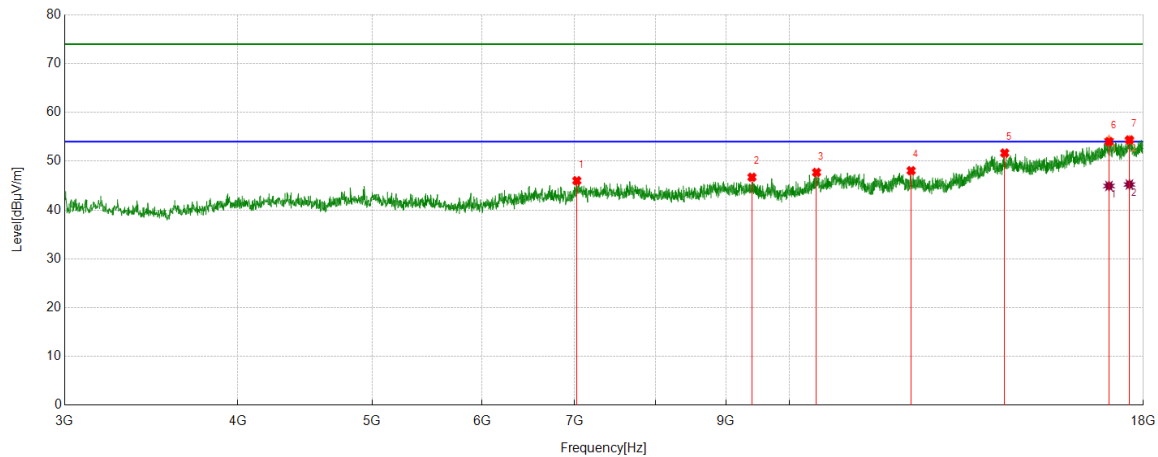
AV Result:

No.	Frequency	Reading Level	Correct Factor	Result	Limit	Margin	Remark
	[MHz]	[dBuV/m]	[dB]	[dBuV/m]	[dBuV/m]	[dB]	
1	16946.1183	25.49	19.45	44.94	54.00	-9.06	Vertical
2	17594.9494	26.55	19.65	46.20	54.00	-7.80	Vertical

- Note: 1. Measurement = Reading Level + Correct Factor.
2. If peak result complies with AV limit, AV Result is deemed to comply with AV limit.
3. Peak result: Peak detector, RBW: 1 MHz, VBW: 3 MHz.
4. Average result: Peak detector, RBW: 1 MHz, VBW: 1/T MHz(refer to clause 7.1.).
5. For above 3GHz part, filter losses were only considered in the spurious frequency bands and the authorized band was not corrected for HPF losses.
6. Only the worst case emission was recorded, if it complies with the limit, the other emissions deemed to comply with the limit.



Test Mode	Channel	Polarization	Verdict
11B	2462 MHz	Horizontal	PASS



PK Result:

No.	Frequency	Reading Level	Correct Factor	Result	Limit	Margin	Remark
	[MHz]	[dBuV/m]	[dB]	[dBuV/m]	[dBuV/m]	[dB]	
1	7024.253	36.77	9.24	46.01	74.00	-27.99	Horizontal
2	9396.4246	37.25	9.47	46.72	74.00	-27.28	Horizontal
3	10459.6825	36.26	11.45	47.71	74.00	-26.29	Horizontal
4	12239.2799	35.74	12.32	48.06	74.00	-25.94	Horizontal
5	14298.2873	35.62	16.06	51.68	74.00	-22.32	Horizontal
6	17002.3753	35.22	19.10	54.32	74.00	-19.68	Horizontal
7	17589.3237	34.5	19.75	54.25	74.00	-19.75	Horizontal

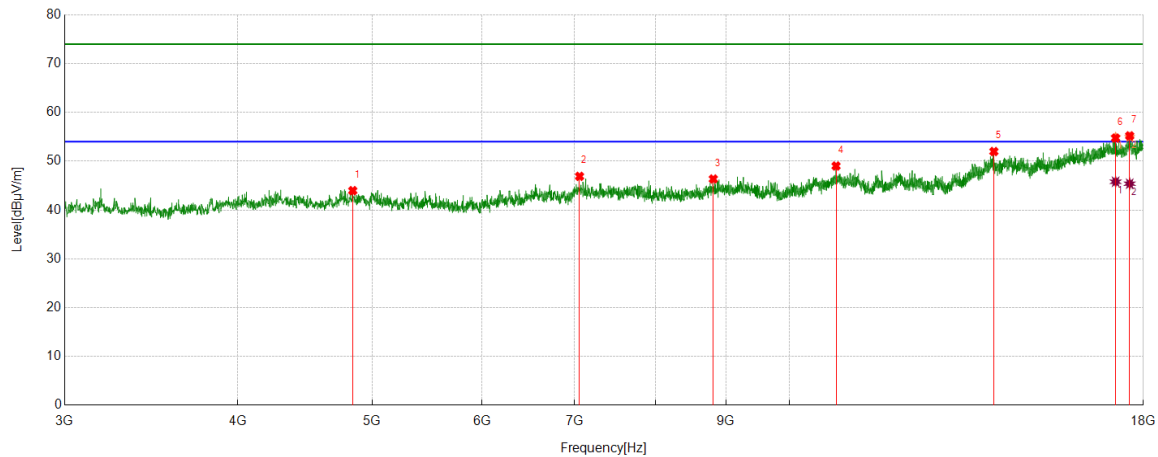
AV Result:

No.	Frequency	Reading Level	Correct Factor	Result	Limit	Margin	Remark
	[MHz]	[dBuV/m]	[dB]	[dBuV/m]	[dBuV/m]	[dB]	
1	17002.3753	25.83	19.10	44.93	54.00	-9.07	Horizontal
2	17589.3237	25.48	19.75	45.23	54.00	-8.77	Horizontal

- Note: 1. Measurement = Reading Level + Correct Factor.
2. If peak result complies with AV limit, AV Result is deemed to comply with AV limit.
3. Peak result: Peak detector, RBW: 1 MHz, VBW: 3 MHz.
4. Average result: Peak detector, RBW: 1 MHz, VBW: 1/T MHz(refer to clause 7.1.).
5. For above 3GHz part, filter losses were only considered in the spurious frequency bands and the authorized band was not corrected for HPF losses.
6. Only the worst case emission was recorded, if it complies with the limit, the other emissions deemed to comply with the limit.



Test Mode	Channel	Polarization	Verdict
11B	2462 MHz	Vertical	PASS



PK Result:

No.	Frequency	Reading Level	Correct Factor	Result	Limit	Margin	Remark
	[MHz]	[dBuV/m]	[dB]	[dBuV/m]	[dBuV/m]	[dB]	
1	4841.4802	38.53	5.44	43.97	74.00	-30.03	Vertical
2	7056.132	37.68	9.22	46.90	74.00	-27.10	Vertical
3	8811.3514	37.26	9.10	46.36	74.00	-27.64	Vertical
4	10804.7256	36.95	12.07	49.02	74.00	-24.98	Vertical
5	14043.2554	35.86	16.13	51.99	74.00	-22.01	Vertical
6	17189.8987	35.68	19.21	54.89	74.00	-19.11	Vertical
7	17596.8246	35.31	19.61	54.92	74.00	-19.08	Vertical

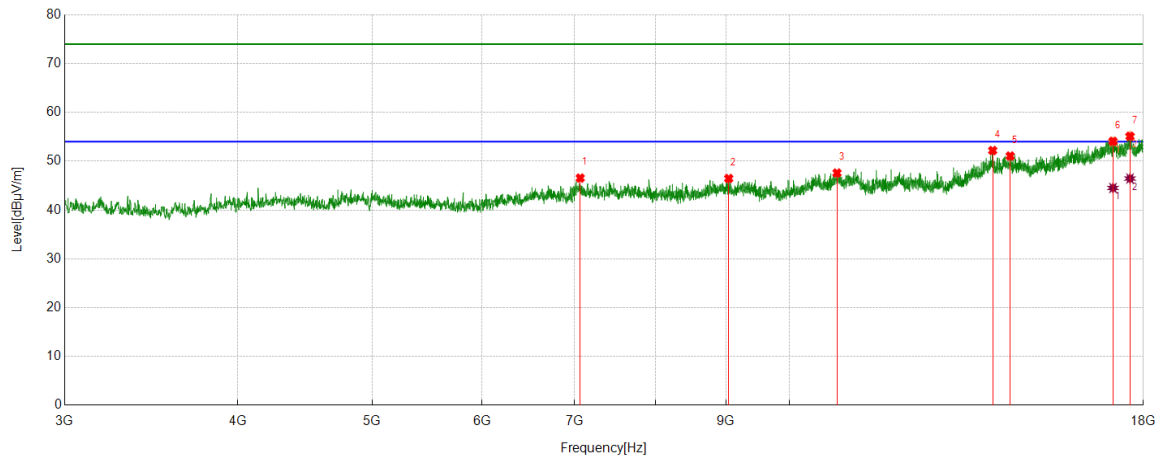
AV Result:

No.	Frequency	Reading Level	Correct Factor	Result	Limit	Margin	Remark
	[MHz]	[dBuV/m]	[dB]	[dBuV/m]	[dBuV/m]	[dB]	
1	17189.8987	26.58	19.21	45.79	54.00	-8.21	Vertical
2	17596.8246	25.78	19.61	45.39	54.00	-8.61	Vertical

- Note: 1. Measurement = Reading Level + Correct Factor.
2. If peak result complies with AV limit, AV Result is deemed to comply with AV limit.
3. Peak result: Peak detector, RBW: 1 MHz, VBW: 3 MHz.
4. Average result: Peak detector, RBW: 1 MHz, VBW: 1/T MHz(refer to clause 7.1.).
5. For above 3GHz part, filter losses were only considered in the spurious frequency bands and the authorized band was not corrected for HPF losses.
6. Only the worst case emission was recorded, if it complies with the limit, the other emissions deemed to comply with the limit.



Test Mode	Channel	Polarization	Verdict
11G	2412 MHz	Horizontal	PASS



PK Result:

No.	Frequency	Reading Level	Correct Factor	Result	Limit	Margin	Remark
	[MHz]	[dBuV/m]	[dB]	[dBuV/m]	[dBuV/m]	[dB]	
1	7063.633	37.38	9.17	46.55	74.00	-27.45	Horizontal
2	9040.13	36.90	9.56	46.46	74.00	-27.54	Horizontal
3	10821.6027	35.38	12.21	47.59	74.00	-26.41	Horizontal
4	14015.1269	36.33	15.86	52.19	74.00	-21.81	Horizontal
5	14427.6785	35.14	15.93	51.07	74.00	-22.93	Horizontal
6	17114.8894	35.33	18.59	53.92	74.00	-20.08	Horizontal
7	17606.2008	35.52	19.61	55.13	74.00	-18.87	Horizontal

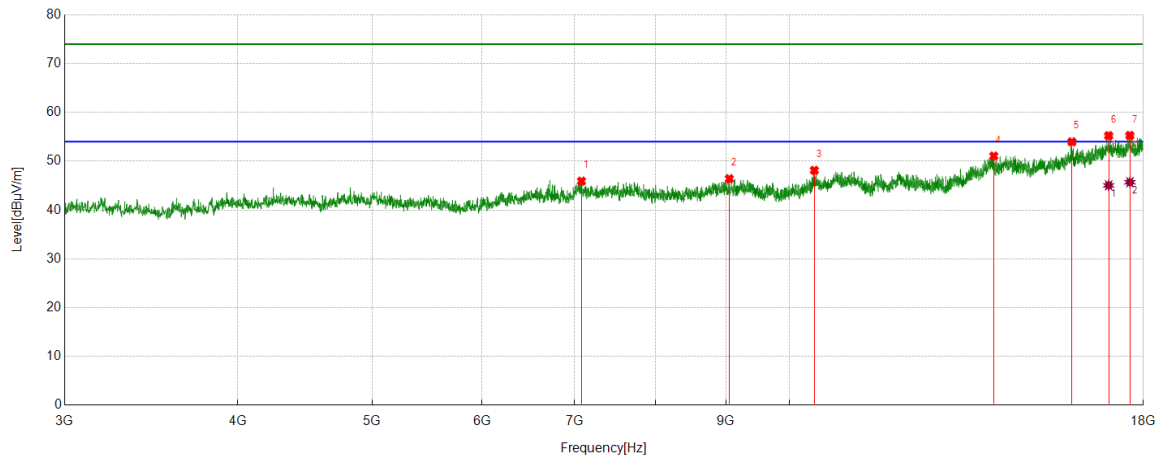
AV Result:

No.	Frequency	Reading Level	Correct Factor	Result	Limit	Margin	Remark
	[MHz]	[dBuV/m]	[dB]	[dBuV/m]	[dBuV/m]	[dB]	
1	17114.8894	25.93	18.59	44.52	54.00	-9.48	Horizontal
2	17606.2008	26.84	19.61	46.45	54.00	-7.55	Horizontal

- Note: 1. Measurement = Reading Level + Correct Factor.
2. If peak result complies with AV limit, AV Result is deemed to comply with AV limit.
3. Peak result: Peak detector, RBW: 1 MHz, VBW: 3 MHz.
4. Average result: Peak detector, RBW: 1 MHz, VBW: 1/T MHz(refer to clause 7.1.).
5. For above 3GHz part, filter losses were only considered in the spurious frequency bands and the authorized band was not corrected for HPF losses.
6. Only the worst case emission was recorded, if it complies with the limit, the other emissions deemed to comply with the limit.



Test Mode	Channel	Polarization	Verdict
11G	2412 MHz	Vertical	PASS



PK Result:

No.	Frequency	Reading Level	Correct Factor	Result	Limit	Margin	Remark
	[MHz]	[dBuV/m]	[dB]	[dBuV/m]	[dBuV/m]	[dB]	
1	7078.6348	36.49	9.42	45.91	74.00	-28.09	Vertical
2	9049.5062	36.99	9.42	46.41	74.00	-27.59	Vertical
3	10422.1778	36.86	11.27	48.13	74.00	-25.87	Vertical
4	14041.3802	34.95	16.11	51.06	74.00	-22.94	Vertical
5	15985.9982	36.95	17.02	53.97	74.00	-20.03	Vertical
6	16992.9991	35.91	19.16	55.07	74.00	-18.93	Vertical
7	17602.4503	35.51	19.57	55.08	74.00	-18.92	Vertical

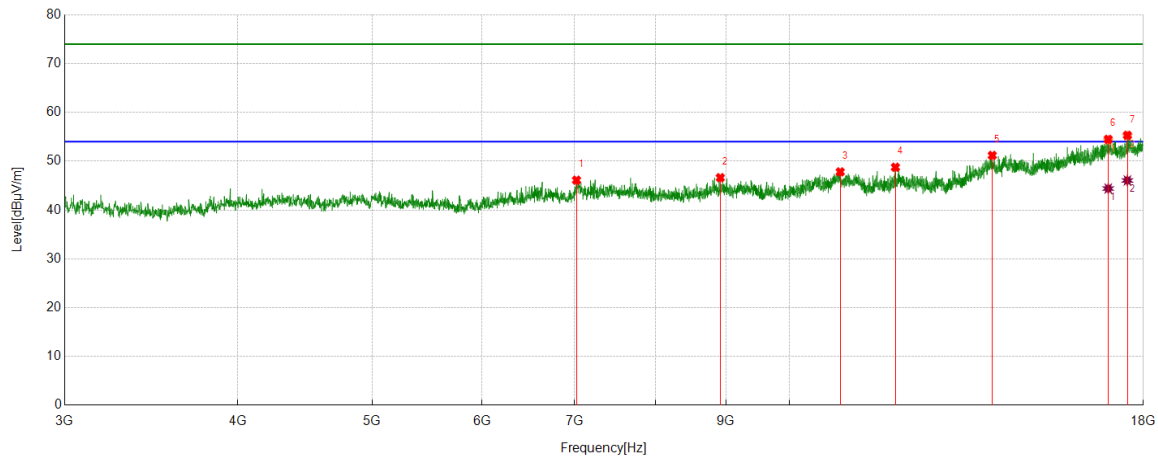
AV Result:

No.	Frequency	Reading Level	Correct Factor	Result	Limit	Margin	Remark
	[MHz]	[dBuV/m]	[dB]	[dBuV/m]	[dBuV/m]	[dB]	
1	16992.9991	25.90	19.16	45.06	54.00	-8.94	Vertical
2	17602.4503	26.12	19.57	45.69	54.00	-8.31	Vertical

- Note: 1. Measurement = Reading Level + Correct Factor.
2. If peak result complies with AV limit, AV Result is deemed to comply with AV limit.
3. Peak result: Peak detector, RBW: 1 MHz, VBW: 3 MHz.
4. Average result: Peak detector, RBW: 1 MHz, VBW: 1/T MHz(refer to clause 7.1.).
5. For above 3GHz part, filter losses were only considered in the spurious frequency bands and the authorized band was not corrected for HPF losses.
6. Only the worst case emission was recorded, if it complies with the limit, the other emissions deemed to comply with the limit.



Test Mode	Channel	Polarization	Verdict
11G	2427 MHz	Horizontal	PASS



PK Result:

No.	Frequency	Reading Level	Correct Factor	Result	Limit	Margin	Remark
	[MHz]	[dBuV/m]	[dB]	[dBuV/m]	[dBuV/m]	[dB]	
1	7020.5026	36.83	9.28	46.11	74.00	-27.89	Horizontal
2	8914.4893	37.33	9.30	46.63	74.00	-27.37	Horizontal
3	10879.735	35.51	12.30	47.81	74.00	-26.19	Horizontal
4	11924.2405	36.42	12.34	48.76	74.00	-25.24	Horizontal
5	14005.7507	35.35	15.84	51.19	74.00	-22.81	Horizontal
6	16979.8725	34.32	19.91	54.23	74.00	-19.77	Horizontal
7	17529.3162	36.01	19.13	55.14	74.00	-18.86	Horizontal

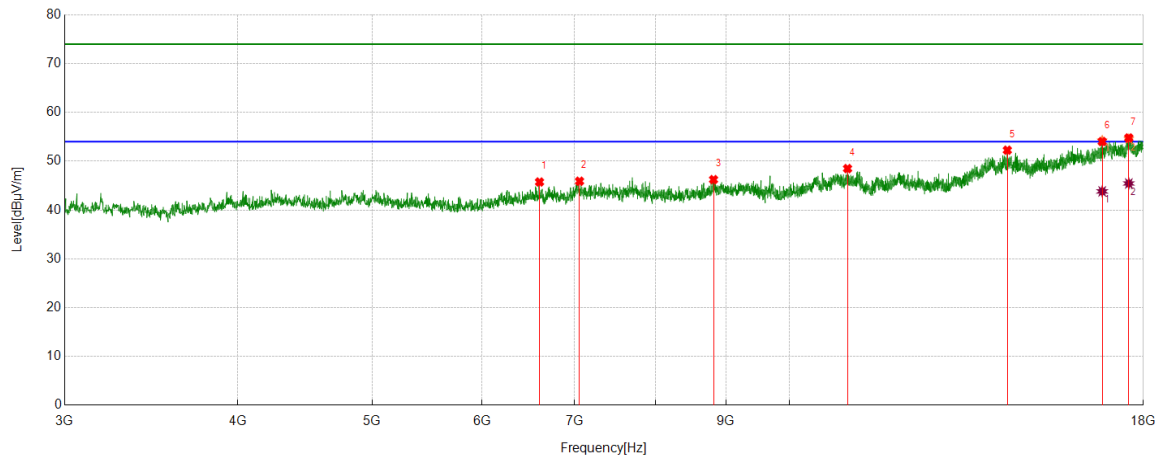
AV Result:

No.	Frequency	Reading Level	Correct Factor	Result	Limit	Margin	Remark
	[MHz]	[dBuV/m]	[dB]	[dBuV/m]	[dBuV/m]	[dB]	
1	16979.8725	24.49	19.91	44.40	54.00	-9.60	Horizontal
2	17529.3162	26.93	19.13	46.06	54.00	-7.94	Horizontal

- Note: 1. Measurement = Reading Level + Correct Factor.
2. If peak result complies with AV limit, AV Result is deemed to comply with AV limit.
3. Peak result: Peak detector, RBW: 1 MHz, VBW: 3 MHz.
4. Average result: Peak detector, RBW: 1 MHz, VBW: 1/T MHz(refer to clause 7.1.).
5. For above 3GHz part, filter losses were only considered in the spurious frequency bands and the authorized band was not corrected for HPF losses.
6. Only the worst case emission was recorded, if it complies with the limit, the other emissions deemed to comply with the limit.



Test Mode	Channel	Polarization	Verdict
11G	2427 MHz	Vertical	PASS



PK Result:

No.	Frequency	Reading Level	Correct Factor	Result	Limit	Margin	Remark
	[MHz]	[dBuV/m]	[dB]	[dBuV/m]	[dBuV/m]	[dB]	
1	6602.3253	36.97	8.77	45.74	74.00	-28.26	Vertical
2	7056.1320	36.68	9.22	45.90	74.00	-28.10	Vertical
3	8815.1019	37.11	9.12	46.23	74.00	-27.77	Vertical
4	11012.8766	36.03	12.46	48.49	74.00	-25.51	Vertical
5	14360.1700	36.57	15.69	52.26	74.00	-21.74	Vertical
6	16811.1014	36.47	17.77	54.24	74.00	-19.76	Vertical
7	17570.5713	34.53	20.04	54.57	74.00	-19.43	Vertical

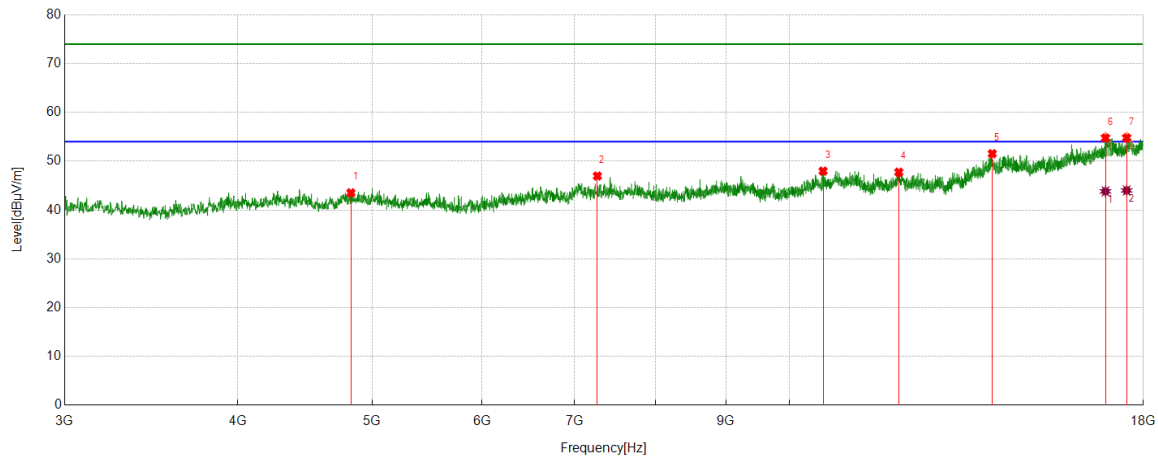
AV Result:

No.	Frequency	Reading Level	Correct Factor	Result	Limit	Margin	Remark
	[MHz]	[dBuV/m]	[dB]	[dBuV/m]	[dBuV/m]	[dB]	
1	16811.1014	26.05	17.77	43.82	54.00	-10.18	Vertical
2	17570.5713	25.40	20.04	45.44	54.00	-8.56	Vertical

- Note: 1. Measurement = Reading Level + Correct Factor.
2. If peak result complies with AV limit, AV Result is deemed to comply with AV limit.
3. Peak result: Peak detector, RBW: 1 MHz, VBW: 3 MHz.
4. Average result: Peak detector, RBW: 1 MHz, VBW: 1/T MHz(refer to clause 7.1.).
5. For above 3GHz part, filter losses were only considered in the spurious frequency bands and the authorized band was not corrected for HPF losses.
6. Only the worst case emission was recorded, if it complies with the limit, the other emissions deemed to comply with the limit.



Test Mode	Channel	Polarization	Verdict
11G	2437 MHz	Horizontal	PASS



PK Result:

No.	Frequency	Reading Level	Correct Factor	Result	Limit	Margin	Remark
	[MHz]	[dBuV/m]	[dB]	[dBuV/m]	[dBuV/m]	[dB]	
1	4826.4783	38.16	5.37	43.53	74.00	-30.47	Horizontal
2	7268.0335	38.34	8.63	46.97	74.00	-27.03	Horizontal
3	10574.0718	36.14	11.83	47.97	74.00	-26.03	Horizontal
4	11991.749	34.89	12.86	47.75	74.00	-26.25	Horizontal
5	14005.7507	35.70	15.84	51.54	74.00	-22.46	Horizontal
6	16902.9879	36.48	18.49	54.97	74.00	-19.03	Horizontal
7	17508.6886	35.68	19.28	54.96	74.00	-19.04	Horizontal

AV Result:

No.	Frequency	Reading Level	Correct Factor	Result	Limit	Margin	Remark
	[MHz]	[dBuV/m]	[dB]	[dBuV/m]	[dBuV/m]	[dB]	
1	16902.9879	25.33	18.49	43.82	54.00	-10.18	Horizontal
2	17508.6886	24.73	19.28	44.01	54.00	-9.99	Horizontal

Note: 1. Measurement = Reading Level + Correct Factor.

2. If peak result complies with AV limit, AV Result is deemed to comply with AV limit.

3. Peak result: Peak detector, RBW: 1 MHz, VBW: 3 MHz.

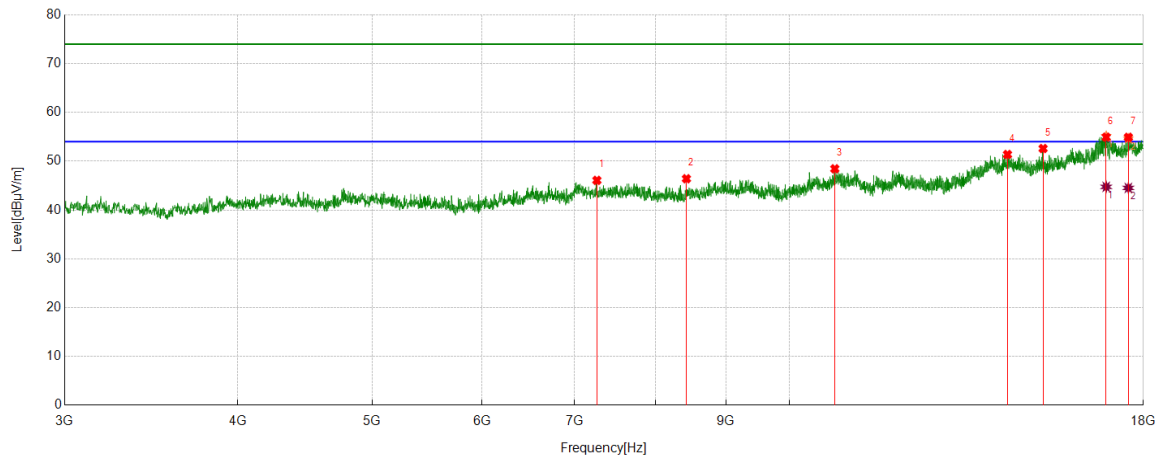
4. Average result: Peak detector, RBW: 1 MHz, VBW: 1/T MHz(refer to clause 7.1.).

5. For above 3GHz part, filter losses were only considered in the spurious frequency bands and the authorized band was not corrected for HPF losses.

6. Only the worst case emission was recorded, if it complies with the limit, the other emissions deemed to comply with the limit.



Test Mode	Channel	Polarization	Verdict
11G	2437 MHz	Vertical	PASS



PK Result:

No.	Frequency	Reading Level	Correct Factor	Result	Limit	Margin	Remark
	[MHz]	[dBuV/m]	[dB]	[dBuV/m]	[dBuV/m]	[dB]	
1	7262.4078	37.43	8.65	46.08	74.00	-27.92	Vertical
2	8426.9284	38.19	8.22	46.41	74.00	-27.59	Vertical
3	10782.2228	36.44	12.01	48.45	74.00	-25.55	Vertical
4	14363.9205	35.70	15.68	51.38	74.00	-22.62	Vertical
5	15239.655	36.66	15.94	52.60	74.00	-21.40	Vertical
6	16923.6155	36.32	18.85	55.17	74.00	-18.83	Vertical
7	17557.4447	35.25	19.38	54.63	74.00	-19.37	Vertical

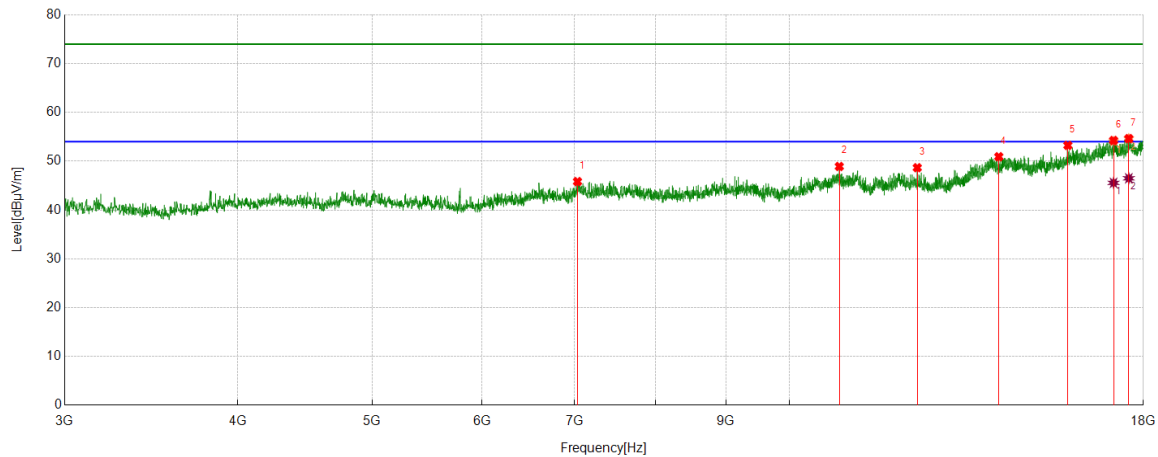
AV Result:

No.	Frequency	Reading Level	Correct Factor	Result	Limit	Margin	Remark
	[MHz]	[dBuV/m]	[dB]	[dBuV/m]	[dBuV/m]	[dB]	
1	16923.6155	25.90	18.85	44.75	54.00	-9.25	Vertical
2	17557.4447	25.15	19.38	44.53	54.00	-9.47	Vertical

- Note: 1. Measurement = Reading Level + Correct Factor.
2. If peak result complies with AV limit, AV Result is deemed to comply with AV limit.
3. Peak result: Peak detector, RBW: 1 MHz, VBW: 3 MHz.
4. Average result: Peak detector, RBW: 1 MHz, VBW: 1/T MHz(refer to clause 7.1.).
5. For above 3GHz part, filter losses were only considered in the spurious frequency bands and the authorized band was not corrected for HPF losses.
6. Only the worst case emission was recorded, if it complies with the limit, the other emissions deemed to comply with the limit.



Test Mode	Channel	Polarization	Verdict
11G	2447 MHz	Horizontal	PASS



PK Result:

No.	Frequency	Reading Level	Correct Factor	Result	Limit	Margin	Remark
	[MHz]	[dBuV/m]	[dB]	[dBuV/m]	[dBuV/m]	[dB]	
1	7031.754	36.66	9.17	45.83	74.00	-28.17	Horizontal
2	10862.8579	36.78	12.14	48.92	74.00	-25.08	Horizontal
3	12364.9206	36.80	11.87	48.67	74.00	-25.33	Horizontal
4	14157.6447	35.04	15.88	50.92	74.00	-23.08	Horizontal
5	15879.1099	36.08	17.16	53.24	74.00	-20.76	Horizontal
6	17131.7665	35.31	18.74	54.05	74.00	-19.95	Horizontal
7	17570.5713	34.58	20.04	54.62	74.00	-19.38	Horizontal

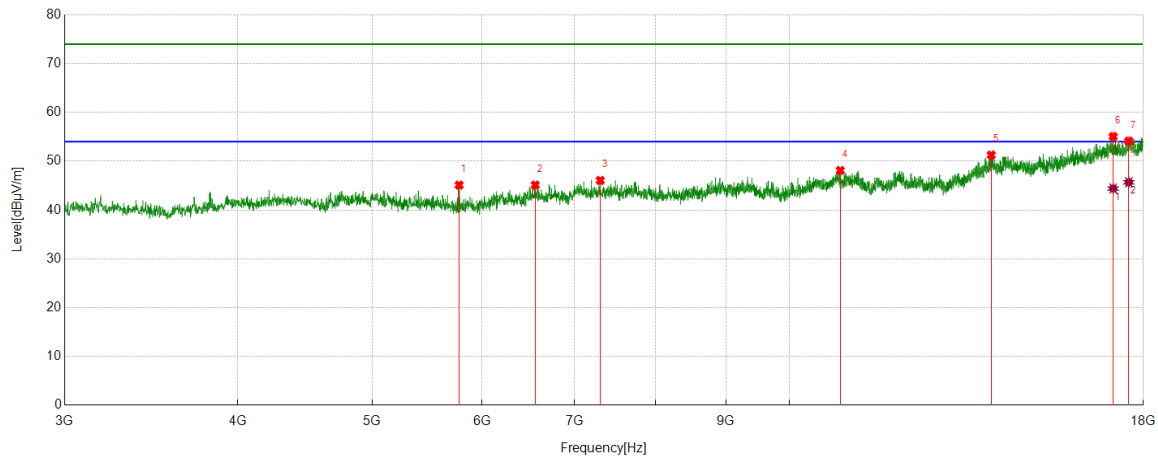
AV Result:

No.	Frequency	Reading Level	Correct Factor	Result	Limit	Margin	Remark
	[MHz]	[dBuV/m]	[dB]	[dBuV/m]	[dBuV/m]	[dB]	
1	17131.7665	26.82	18.74	45.56	54.00	-8.44	Horizontal
2	17570.5713	26.46	20.04	46.50	54.00	-7.50	Horizontal

- Note: 1. Measurement = Reading Level + Correct Factor.
2. If peak result complies with AV limit, AV Result is deemed to comply with AV limit.
3. Peak result: Peak detector, RBW: 1 MHz, VBW: 3 MHz.
4. Average result: Peak detector, RBW: 1 MHz, VBW: 1/T MHz(refer to clause 7.1.).
5. For above 3GHz part, filter losses were only considered in the spurious frequency bands and the authorized band was not corrected for HPF losses.
6. Only the worst case emission was recorded, if it complies with the limit, the other emissions deemed to comply with the limit.



Test Mode	Channel	Polarization	Verdict
11G	2447 MHz	Vertical	PASS



PK Result:

No.	Frequency	Reading Level	Correct Factor	Result	Limit	Margin	Remark
	[MHz]	[dBuV/m]	[dB]	[dBuV/m]	[dBuV/m]	[dB]	
1	4520.8150	40.34	5.42	45.76	74.00	-28.24	Vertical
2	7506.1883	38.66	8.61	47.27	74.00	-26.73	Vertical
3	8951.9940	37.96	9.06	47.02	74.00	-26.98	Vertical
4	11194.7743	38.26	11.96	50.22	74.00	-23.78	Vertical
5	15241.5302	36.87	14.95	51.82	74.00	-22.18	Vertical
6	17120.5151	36.42	18.61	55.03	74.00	-18.97	Vertical
7	17570.5713	34.01	20.04	54.05	74.00	-19.95	Vertical

AV Result:

No.	Frequency	Reading Level	Correct Factor	Result	Limit	Margin	Remark
	[MHz]	[dBuV/m]	[dB]	[dBuV/m]	[dBuV/m]	[dB]	
1	17120.5151	25.80	18.61	44.41	54.00	-9.59	Vertical
2	17570.5713	25.64	20.04	45.68	54.00	-8.32	Vertical

Note: 1. Measurement = Reading Level + Correct Factor.

2. If peak result complies with AV limit, AV Result is deemed to comply with AV limit.

3. Peak result: Peak detector, RBW: 1 MHz, VBW: 3 MHz.

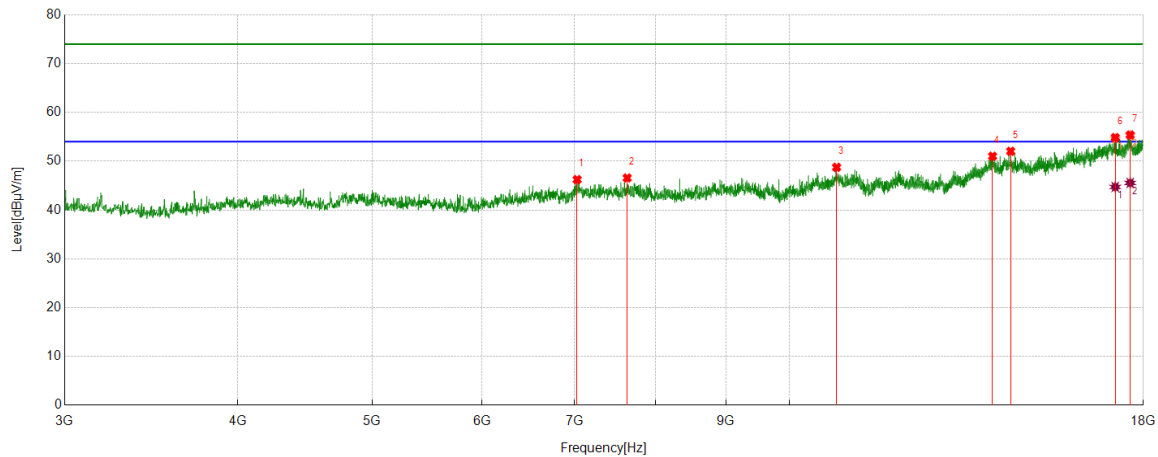
4. Average result: Peak detector, RBW: 1 MHz, VBW: 1/T MHz(refer to clause 7.1.).

5. For above 3GHz part, filter losses were only considered in the spurious frequency bands and the authorized band was not corrected for HPF losses.

6. Only the worst case emission was recorded, if it complies with the limit, the other emissions deemed to comply with the limit.



Test Mode	Channel	Polarization	Verdict
11G	2462 MHz	Horizontal	PASS



PK Result:

No.	Frequency	Reading Level	Correct Factor	Result	Limit	Margin	Remark
	[MHz]	[dBuV/m]	[dB]	[dBuV/m]	[dBuV/m]	[dB]	
1	7028.0035	37.04	9.20	46.24	74.00	-27.76	Horizontal
2	7637.4547	38.11	8.46	46.57	74.00	-27.43	Horizontal
3	10814.1018	36.60	12.15	48.75	74.00	-25.25	Horizontal
4	14013.2517	35.16	15.86	51.02	74.00	-22.98	Horizontal
5	14440.8051	35.98	16.06	52.04	74.00	-21.96	Horizontal
6	17180.5226	35.77	18.81	54.58	74.00	-19.42	Horizontal
7	17611.8265	35.7	19.58	55.28	74.00	-18.72	Horizontal

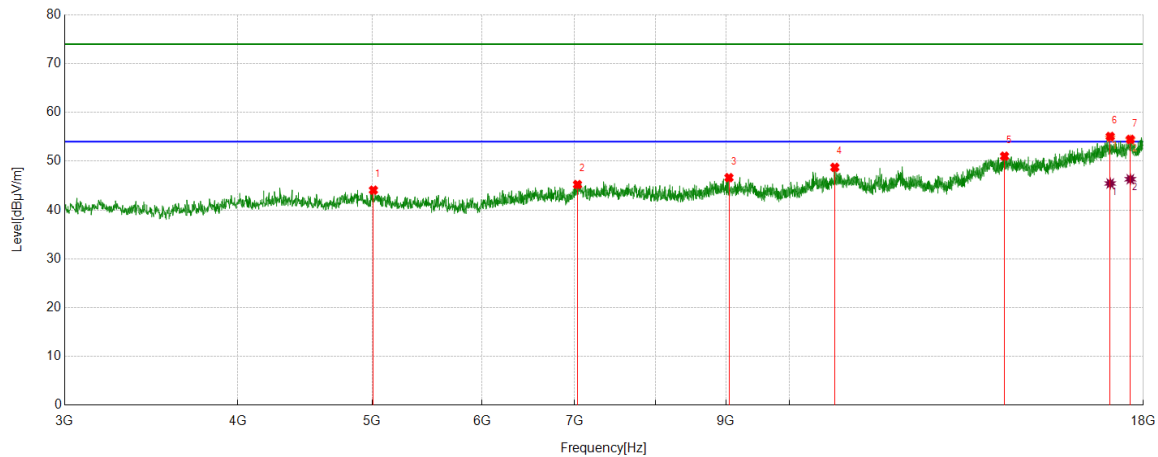
AV Result:

No.	Frequency	Reading Level	Correct Factor	Result	Limit	Margin	Remark
	[MHz]	[dBuV/m]	[dB]	[dBuV/m]	[dBuV/m]	[dB]	
1	17180.5226	25.92	18.81	44.73	54.00	-9.27	Horizontal
2	17611.8265	25.97	19.58	45.55	54.00	-8.45	Horizontal

- Note: 1. Measurement = Reading Level + Correct Factor.
2. If peak result complies with AV limit, AV Result is deemed to comply with AV limit.
3. Peak result: Peak detector, RBW: 1 MHz, VBW: 3 MHz.
4. Average result: Peak detector, RBW: 1 MHz, VBW: 1/T MHz(refer to clause 7.1.).
5. For above 3GHz part, filter losses were only considered in the spurious frequency bands and the authorized band was not corrected for HPF losses.
6. Only the worst case emission was recorded, if it complies with the limit, the other emissions deemed to comply with the limit.



Test Mode	Channel	Polarization	Verdict
11G	2462 MHz	Vertical	PASS



PK Result:

No.	Frequency	Reading Level	Correct Factor	Result	Limit	Margin	Remark
	[MHz]	[dBuV/m]	[dB]	[dBuV/m]	[dBuV/m]	[dB]	
1	5010.2513	38.57	5.50	44.07	74.00	-29.93	Vertical
2	7031.754	36.05	9.17	45.22	74.00	-28.78	Vertical
3	9043.8805	37.13	9.50	46.63	74.00	-27.37	Vertical
4	10782.2228	36.73	12.01	48.74	74.00	-25.26	Vertical
5	14292.6616	35.03	16.00	51.03	74.00	-22.97	Vertical
6	17036.1295	35.39	19.40	54.79	74.00	-19.21	Vertical
7	17615.5769	34.95	19.42	54.37	74.00	-19.63	Vertical

AV Result:

No.	Frequency	Reading Level	Correct Factor	Result	Limit	Margin	Remark
	[MHz]	[dBuV/m]	[dB]	[dBuV/m]	[dBuV/m]	[dB]	
1	17036.1295	26.04	19.40	45.44	54.00	-8.56	Vertical
2	17615.5769	26.89	19.42	46.31	54.00	-7.69	Vertical

Note: 1. Measurement = Reading Level + Correct Factor.

2. If peak result complies with AV limit, AV Result is deemed to comply with AV limit.

3. Peak result: Peak detector, RBW: 1 MHz, VBW: 3 MHz.

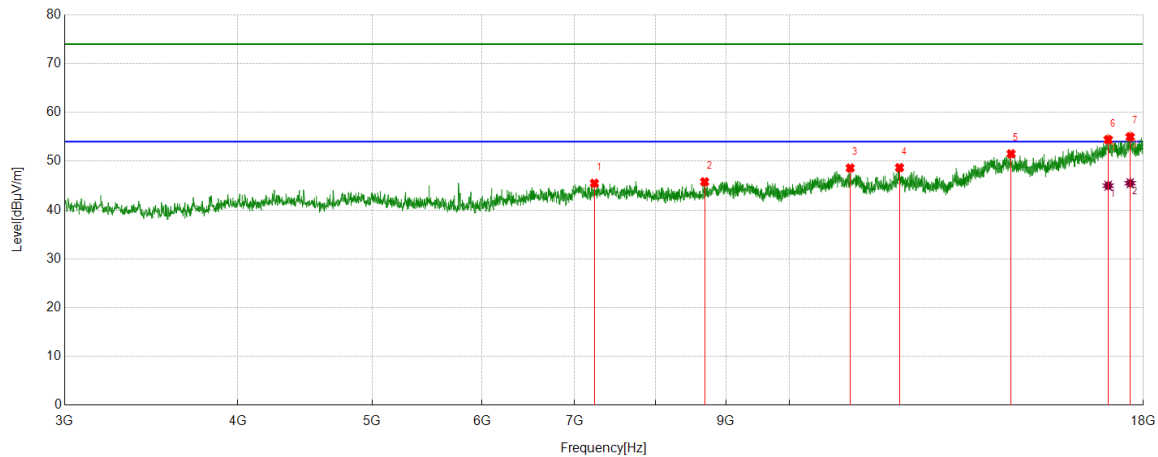
4. Average result: Peak detector, RBW: 1 MHz, VBW: 1/T MHz(refer to clause 7.1.).

5. For above 3GHz part, filter losses were only considered in the spurious frequency bands and the authorized band was not corrected for HPF losses.

6. Only the worst case emission was recorded, if it complies with the limit, the other emissions deemed to comply with the limit.



Test Mode	Channel	Polarization	Verdict
11N HT20	2412 MHz	Horizontal	PASS



PK Result:

No.	Frequency	Reading Level	Correct Factor	Result	Limit	Margin	Remark
	[MHz]	[dBuV/m]	[dB]	[dBuV/m]	[dBuV/m]	[dB]	
1	7232.4041	36.73	8.75	45.48	74.00	-28.52	Horizontal
2	8685.7107	37.30	8.48	45.78	74.00	-28.22	Horizontal
3	11061.6327	36.31	12.30	48.61	74.00	-25.39	Horizontal
4	12004.8756	35.78	12.90	48.68	74.00	-25.32	Horizontal
5	14450.1813	35.48	16.04	51.52	74.00	-22.48	Horizontal
6	16979.8725	34.63	19.91	54.54	74.00	-19.46	Horizontal
7	17609.9512	35.44	19.65	55.09	74.00	-18.91	Horizontal

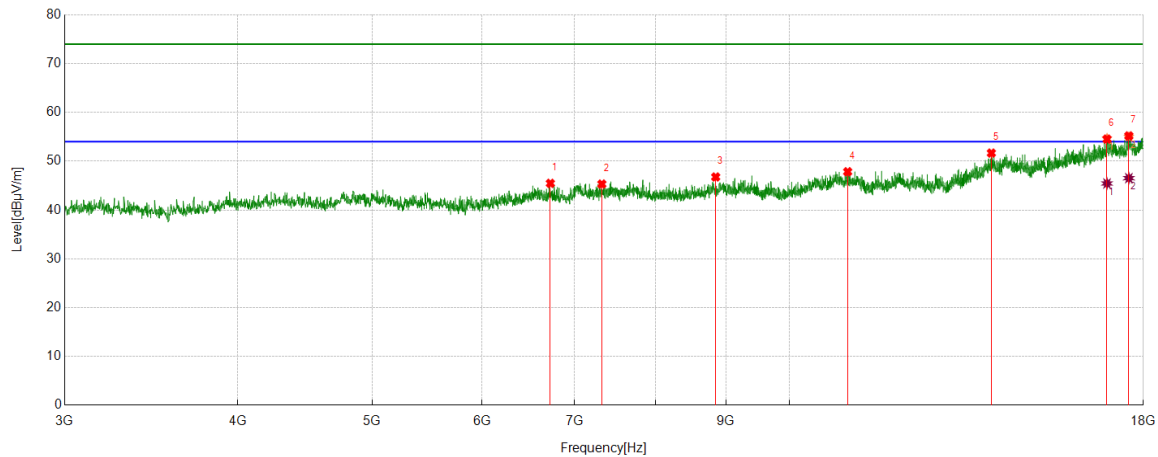
AV Result:

No.	Frequency	Reading Level	Correct Factor	Result	Limit	Margin	Remark
	[MHz]	[dBuV/m]	[dB]	[dBuV/m]	[dBuV/m]	[dB]	
1	16979.8725	25.07	19.91	44.98	54.00	-9.02	Horizontal
2	17609.9512	25.84	19.65	45.49	54.00	--8.51	Horizontal

- Note: 1. Measurement = Reading Level + Correct Factor.
2. If peak result complies with AV limit, AV Result is deemed to comply with AV limit.
3. Peak result: Peak detector, RBW: 1 MHz, VBW: 3 MHz.
4. Average result: Peak detector, RBW: 1 MHz, VBW: 1/T MHz(refer to clause 7.1.).
5. For above 3GHz part, filter losses were only considered in the spurious frequency bands and the authorized band was not corrected for HPF losses.
6. Only the worst case emission was recorded, if it complies with the limit, the other emissions deemed to comply with the limit.



Test Mode	Channel	Polarization	Verdict
11N HT20	2412 MHz	Vertical	PASS



PK Result:

No.	Frequency	Reading Level	Correct Factor	Result	Limit	Margin	Remark
	[MHz]	[dBuV/m]	[dB]	[dBuV/m]	[dBuV/m]	[dB]	
1	6722.3403	36.45	9.02	45.47	74.00	-28.53	Vertical
2	7322.4153	36.80	8.52	45.32	74.00	-28.68	Vertical
3	8846.9809	37.56	9.21	46.77	74.00	-27.23	Vertical
4	11014.7518	35.37	12.47	47.84	74.00	-26.16	Vertical
5	13985.1231	35.73	15.94	51.67	74.00	-22.33	Vertical
6	16946.1183	35.2	19.45	54.65	74.00	-19.35	Vertical
7	17572.4466	35.01	19.97	54.98	74.00	-19.02	Vertical

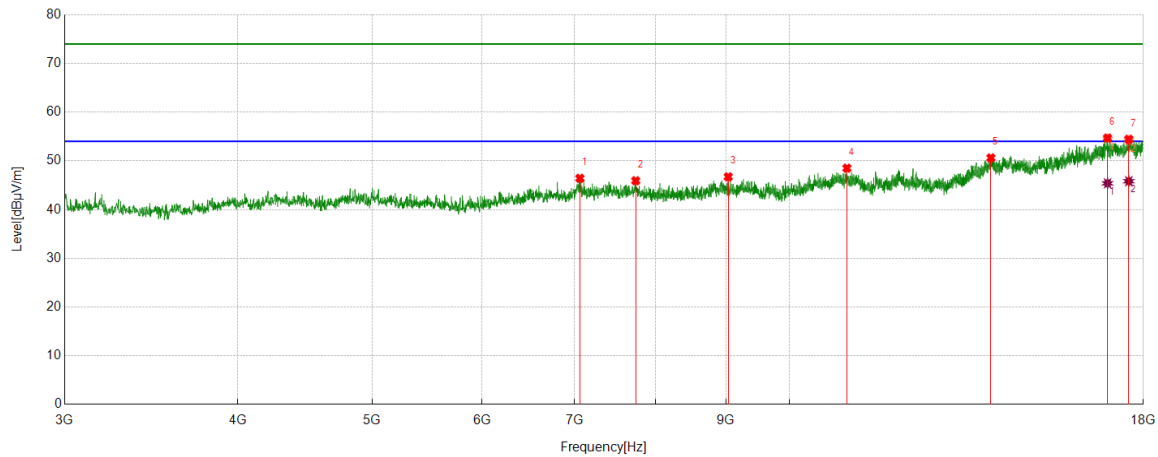
AV Result:

No.	Frequency	Reading Level	Correct Factor	Result	Limit	Margin	Remark
	[MHz]	[dBuV/m]	[dB]	[dBuV/m]	[dBuV/m]	[dB]	
1	16946.1183	25.99	19.45	45.44	54.00	-8.56	Vertical
2	17572.4466	26.56	19.97	46.53	54.00	-7.47	Vertical

- Note: 1. Measurement = Reading Level + Correct Factor.
2. If peak result complies with AV limit, AV Result is deemed to comply with AV limit.
3. Peak result: Peak detector, RBW: 1 MHz, VBW: 3 MHz.
4. Average result: Peak detector, RBW: 1 MHz, VBW: 1/T MHz(refer to clause 7.1.).
5. For above 3GHz part, filter losses were only considered in the spurious frequency bands and the authorized band was not corrected for HPF losses.
6. Only the worst case emission was recorded, if it complies with the limit, the other emissions deemed to comply with the limit.



Test Mode	Channel	Polarization	Verdict
11N HT20	2427 MHz	Horizontal	PASS



PK Result:

No.	Frequency	Reading Level	Correct Factor	Result	Limit	Margin	Remark
	[MHz]	[dBuV/m]	[dB]	[dBuV/m]	[dBuV/m]	[dB]	
1	7059.8825	37.28	9.15	46.43	74.00	-27.57	Horizontal
2	7746.2183	37.32	8.60	45.92	74.00	-28.08	Horizontal
3	9032.6291	37.21	9.52	46.73	74.00	-27.27	Horizontal
4	11001.6252	36.12	12.38	48.50	74.00	-25.50	Horizontal
5	13973.8717	34.76	15.85	50.61	74.00	-23.39	Horizontal
6	16961.1201	34.73	19.78	54.51	74.00	-19.49	Horizontal
7	17570.5713	34.18	20.04	54.22	74.00	-19.78	Horizontal

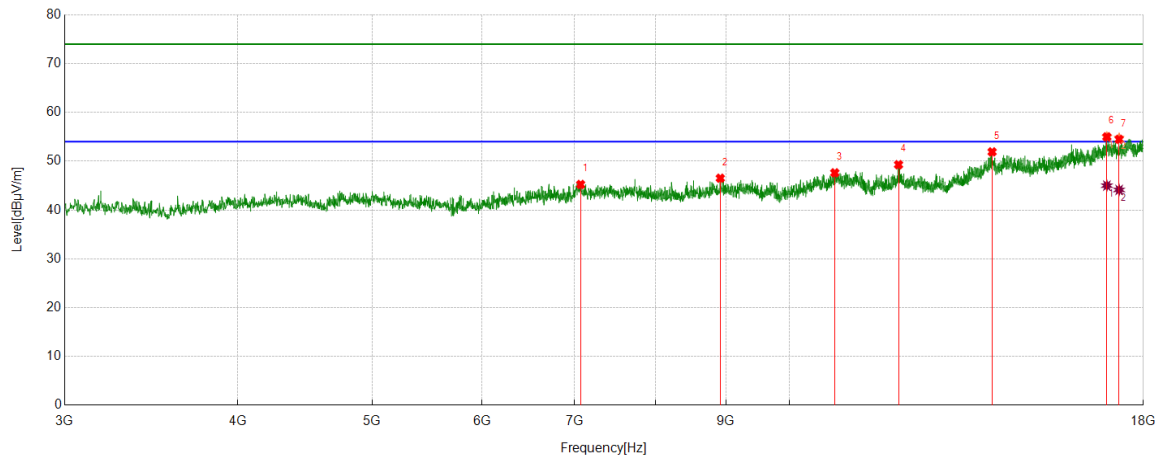
AV Result:

No.	Frequency	Reading Level	Correct Factor	Result	Limit	Margin	Remark
	[MHz]	[dBuV/m]	[dB]	[dBuV/m]	[dBuV/m]	[dB]	
1	16961.1201	25.61	19.78	45.39	54.00	-8.61	Horizontal
2	17570.5713	25.79	20.04	45.83	54.00	-8.17	Horizontal

- Note: 1. Measurement = Reading Level + Correct Factor.
2. If peak result complies with AV limit, AV Result is deemed to comply with AV limit.
3. Peak result: Peak detector, RBW: 1 MHz, VBW: 3 MHz.
4. Average result: Peak detector, RBW: 1 MHz, VBW: 1/T MHz(refer to clause 7.1.).
5. For above 3GHz part, filter losses were only considered in the spurious frequency bands and the authorized band was not corrected for HPF losses.
6. Only the worst case emission was recorded, if it complies with the limit, the other emissions deemed to comply with the limit.



Test Mode	Channel	Polarization	Verdict
11N HT20	2427 MHz	Vertical	PASS



PK Result:

No.	Frequency	Reading Level	Correct Factor	Result	Limit	Margin	Remark
	[MHz]	[dBuV/m]	[dB]	[dBuV/m]	[dBuV/m]	[dB]	
1	7069.2587	36.02	9.22	45.24	74.00	-28.76	Vertical
2	8914.4893	37.22	9.30	46.52	74.00	-27.48	Vertical
3	10782.2228	35.61	12.01	47.62	74.00	-26.38	Vertical
4	11986.1233	36.50	12.79	49.29	74.00	-24.71	Vertical
5	14002.0002	36.09	15.82	51.91	74.00	-22.09	Vertical
6	16942.3678	35.59	19.41	55.00	74.00	-19.00	Vertical
7	17291.1614	36.21	18.55	54.76	74.00	-19.24	Vertical

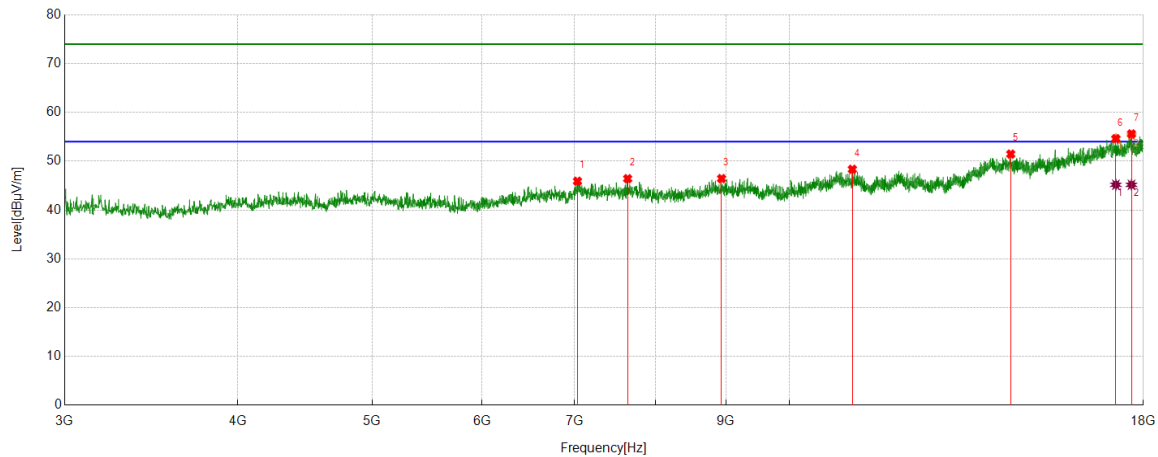
AV Result:

No.	Frequency	Reading Level	Correct Factor	Result	Limit	Margin	Remark
	[MHz]	[dBuV/m]	[dB]	[dBuV/m]	[dBuV/m]	[dB]	
1	16942.3678	25.59	19.41	45.00	54.00	-9.00	Vertical
2	17291.1614	25.57	18.55	44.12	54.00	-9.88	Vertical

- Note: 1. Measurement = Reading Level + Correct Factor.
2. If peak result complies with AV limit, AV Result is deemed to comply with AV limit.
3. Peak result: Peak detector, RBW: 1 MHz, VBW: 3 MHz.
4. Average result: Peak detector, RBW: 1 MHz, VBW: 1/T MHz(refer to clause 7.1.).
5. For above 3GHz part, filter losses were only considered in the spurious frequency bands and the authorized band was not corrected for HPF losses.
6. Only the worst case emission was recorded, if it complies with the limit, the other emissions deemed to comply with the limit.



Test Mode	Channel	Polarization	Verdict
11N HT20	2437 MHz	Horizontal	PASS



PK Result:

No.	Frequency	Reading Level	Correct Factor	Result	Limit	Margin	Remark
	[MHz]	[dBuV/m]	[dB]	[dBuV/m]	[dBuV/m]	[dB]	
1	7031.754	36.73	9.17	45.90	74.00	-28.10	Horizontal
2	7643.0804	37.87	8.55	46.42	74.00	-27.58	Horizontal
3	8933.2417	37.14	9.30	46.44	74.00	-27.56	Horizontal
4	11101.0126	36.08	12.26	48.34	74.00	-25.66	Horizontal
5	14442.6803	35.41	16.05	51.46	74.00	-22.54	Horizontal
6	17197.3997	35.5	19.15	54.65	74.00	-19.35	Horizontal
7	17649.3312	35.87	19.43	55.30	74.00	-18.70	Horizontal

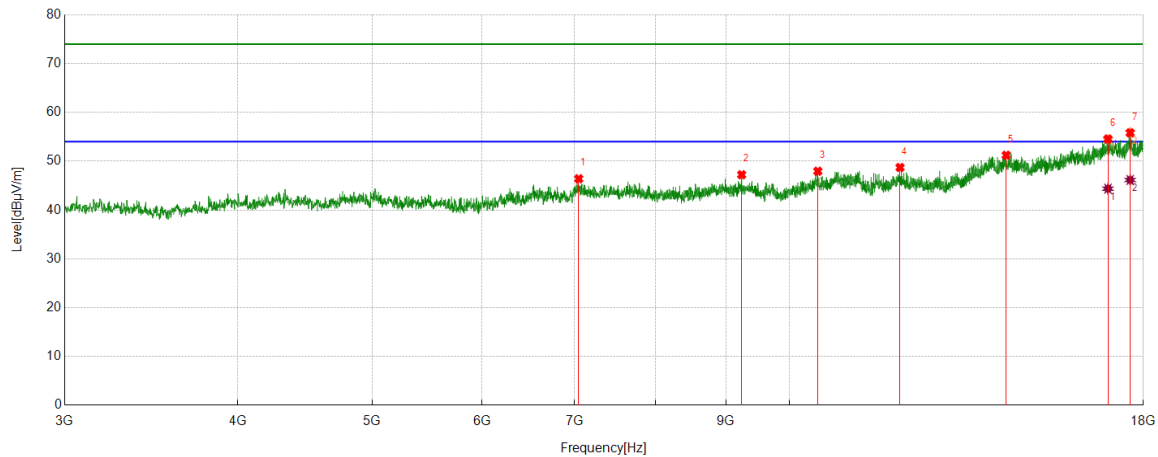
AV Result:

No.	Frequency	Reading Level	Correct Factor	Result	Limit	Margin	Remark
	[MHz]	[dBuV/m]	[dB]	[dBuV/m]	[dBuV/m]	[dB]	
1	17197.3997	26.03	19.15	45.18	54.00	-8.82	Horizontal
2	17649.3312	25.74	19.43	45.17	54.00	-8.83	Horizontal

- Note: 1. Measurement = Reading Level + Correct Factor.
2. If peak result complies with AV limit, AV Result is deemed to comply with AV limit.
3. Peak result: Peak detector, RBW: 1 MHz, VBW: 3 MHz.
4. Average result: Peak detector, RBW: 1 MHz, VBW: 1/T MHz(refer to clause 7.1.).
5. For above 3GHz part, filter losses were only considered in the spurious frequency bands and the authorized band was not corrected for HPF losses.
6. Only the worst case emission was recorded, if it complies with the limit, the other emissions deemed to comply with the limit.



Test Mode	Channel	Polarization	Verdict
11N HT20	2437 MHz	Vertical	PASS



PK Result:

No.	Frequency	Reading Level	Correct Factor	Result	Limit	Margin	Remark
	[MHz]	[dBuV/m]	[dB]	[dBuV/m]	[dBuV/m]	[dB]	
1	7046.7558	37.14	9.27	46.41	74.00	-27.59	Vertical
2	9237.0296	37.73	9.50	47.23	74.00	-26.77	Vertical
3	10482.1853	36.39	11.56	47.95	74.00	-26.05	Vertical
4	12016.127	35.91	12.81	48.72	74.00	-25.28	Vertical
5	14332.0415	35.16	16.07	51.23	74.00	-22.77	Vertical
6	16972.3715	34.48	19.98	54.46	74.00	-19.54	Vertical
7	17609.9512	36.27	19.65	55.92	74.00	-18.08	Vertical

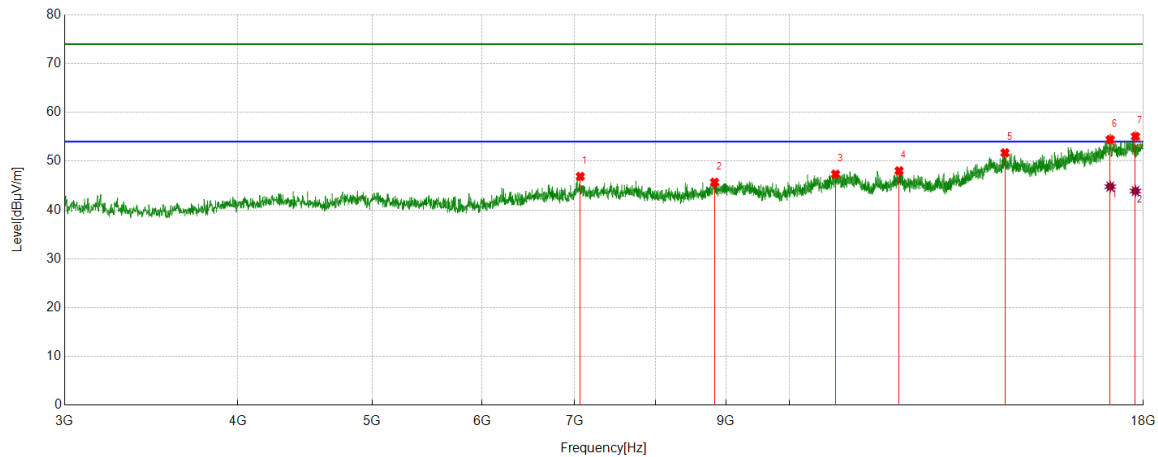
AV Result:

No.	Frequency	Reading Level	Correct Factor	Result	Limit	Margin	Remark
	[MHz]	[dBuV/m]	[dB]	[dBuV/m]	[dBuV/m]	[dB]	
1	16972.3715	24.39	19.98	44.37	54.00	-9.63	Vertical
2	17609.9512	26.50	19.65	46.15	54.00	-7.85	Vertical

- Note: 1. Measurement = Reading Level + Correct Factor.
2. If peak result complies with AV limit, AV Result is deemed to comply with AV limit.
3. Peak result: Peak detector, RBW: 1 MHz, VBW: 3 MHz.
4. Average result: Peak detector, RBW: 1 MHz, VBW: 1/T MHz(refer to clause 7.1.).
5. For above 3GHz part, filter losses were only considered in the spurious frequency bands and the authorized band was not corrected for HPF losses.
6. Only the worst case emission was recorded, if it complies with the limit, the other emissions deemed to comply with the limit.



Test Mode	Channel	Polarization	Verdict
11N HT20	2447 MHz	Horizontal	PASS



PK Result:

No.	Frequency	Reading Level	Correct Factor	Result	Limit	Margin	Remark
	[MHz]	[dBuV/m]	[dB]	[dBuV/m]	[dBuV/m]	[dB]	
1	7065.5082	37.68	9.19	46.87	74.00	-27.13	Horizontal
2	8830.1038	36.44	9.24	45.68	74.00	-28.32	Horizontal
3	10795.3494	35.30	12.04	47.34	74.00	-26.66	Horizontal
4	11997.3747	35.10	12.93	48.03	74.00	-25.97	Horizontal
5	14303.913	35.71	16.01	51.72	74.00	-22.28	Horizontal
6	17036.1295	35.22	19.40	54.62	74.00	-19.38	Horizontal
7	17765.5957	36.08	19.14	55.22	74.00	-18.78	Horizontal

AV Result:

No.	Frequency	Reading Level	Correct Factor	Result	Limit	Margin	Remark
	[MHz]	[dBuV/m]	[dB]	[dBuV/m]	[dBuV/m]	[dB]	
1	17036.1295	25.39	19.40	44.79	54.00	-9.21	Horizontal
2	17765.5957	24.75	19.14	43.89	54.00	-10.11	Horizontal

Note: 1. Measurement = Reading Level + Correct Factor.

2. If peak result complies with AV limit, AV Result is deemed to comply with AV limit.

3. Peak result: Peak detector, RBW: 1 MHz, VBW: 3 MHz.

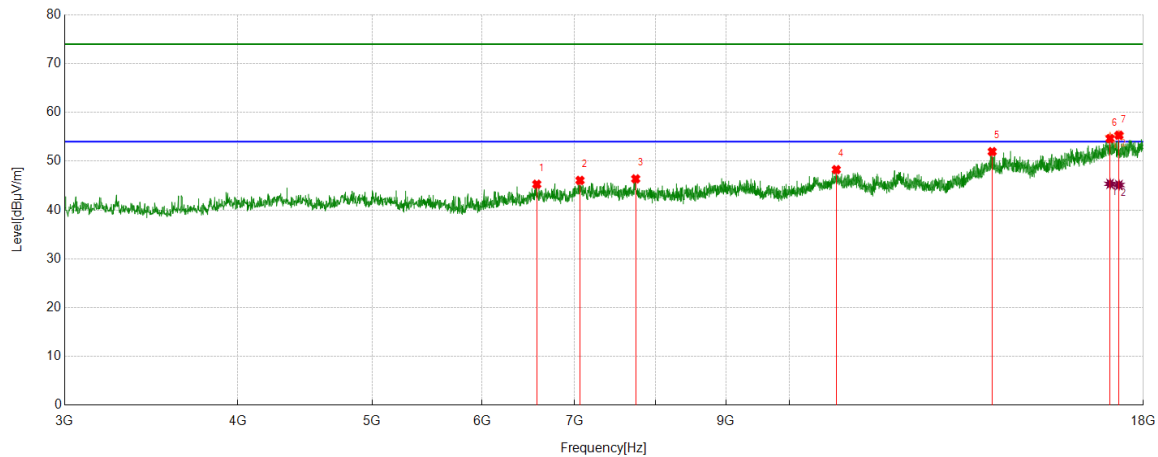
4. Average result: Peak detector, RBW: 1 MHz, VBW: 1/T MHz(refer to clause 7.1.).

5. For above 3GHz part, filter losses were only considered in the spurious frequency bands and the authorized band was not corrected for HPF losses.

6. Only the worst case emission was recorded, if it complies with the limit, the other emissions deemed to comply with the limit.



Test Mode	Channel	Polarization	Verdict
11N HT20	2447 MHz	Vertical	PASS



PK Result:

No.	Frequency	Reading Level	Correct Factor	Result	Limit	Margin	Remark
	[MHz]	[dBuV/m]	[dB]	[dBuV/m]	[dBuV/m]	[dB]	
1	6572.3215	36.81	8.47	45.28	74.00	-28.72	Vertical
2	7061.7577	36.91	9.16	46.07	74.00	-27.93	Vertical
3	7746.2183	37.78	8.60	46.38	74.00	-27.62	Vertical
4	10808.4761	36.17	12.10	48.27	74.00	-25.73	Vertical
5	14003.8755	36.13	15.83	51.96	74.00	-22.04	Vertical
6	17032.379	35.56	19.36	54.92	74.00	-19.08	Vertical
7	17285.5357	36.82	18.48	55.30	74.00	-18.70	Vertical

AV Result:

No.	Frequency	Reading Level	Correct Factor	Result	Limit	Margin	Remark
	[MHz]	[dBuV/m]	[dB]	[dBuV/m]	[dBuV/m]	[dB]	
1	17032.379	26.00	19.36	45.36	54.00	-8.64	Vertical
2	17285.5357	26.64	18.48	45.12	54.00	-8.88	Vertical

Note: 1. Measurement = Reading Level + Correct Factor.

2. If peak result complies with AV limit, AV Result is deemed to comply with AV limit.

3. Peak result: Peak detector, RBW: 1 MHz, VBW: 3 MHz.

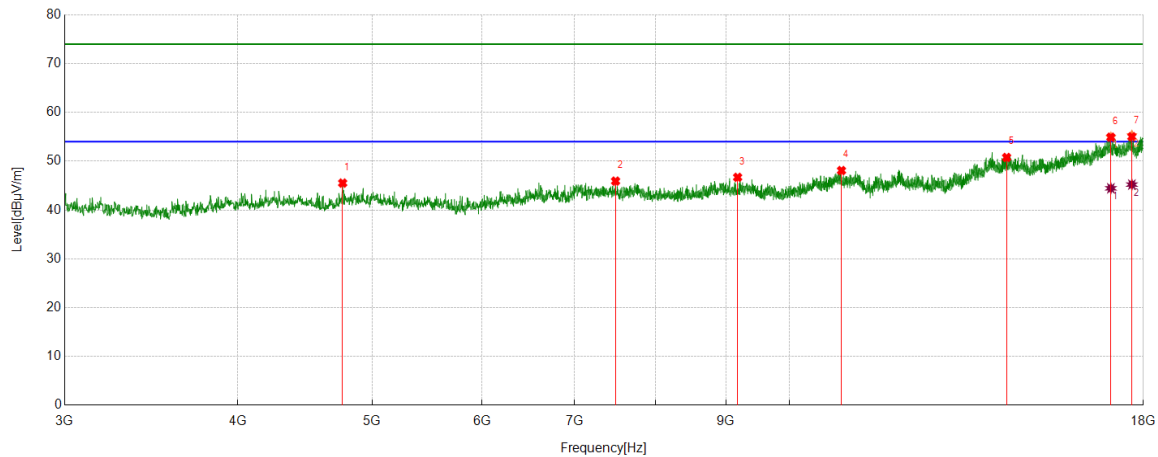
4. Average result: Peak detector, RBW: 1 MHz, VBW: 1/T MHz(refer to clause 7.1.).

5. For above 3GHz part, filter losses were only considered in the spurious frequency bands and the authorized band was not corrected for HPF losses.

6. Only the worst case emission was recorded, if it complies with the limit, the other emissions deemed to comply with the limit.



Test Mode	Channel	Polarization	Verdict
11N HT20	2462 MHz	Horizontal	PASS



PK Result:

No.	Frequency	Reading Level	Correct Factor	Result	Limit	Margin	Remark
	[MHz]	[dBuV/m]	[dB]	[dBuV/m]	[dBuV/m]	[dB]	
1	4760.8451	39.93	5.59	45.52	74.00	-28.48	Horizontal
2	7491.1864	37.72	8.20	45.92	74.00	-28.08	Horizontal
3	9175.1469	37.45	9.25	46.70	74.00	-27.30	Horizontal
4	10902.2378	35.85	12.24	48.09	74.00	-25.91	Horizontal
5	14343.2929	34.64	16.13	50.77	74.00	-23.23	Horizontal
6	17054.8819	34.96	19.97	54.93	74.00	-19.07	Horizontal
7	17660.5826	35.7	19.61	55.31	74.00	-18.69	Horizontal

AV Result:

No.	Frequency	Reading Level	Correct Factor	Result	Limit	Margin	Remark
	[MHz]	[dBuV/m]	[dB]	[dBuV/m]	[dBuV/m]	[dB]	
1	17054.8819	24.48	19.97	44.45	54.00	-9.55	Horizontal
2	17660.5826	25.60	19.61	45.21	54.00	-8.79	Horizontal

Note: 1. Measurement = Reading Level + Correct Factor.

2. If peak result complies with AV limit, AV Result is deemed to comply with AV limit.

3. Peak result: Peak detector, RBW: 1 MHz, VBW: 3 MHz.

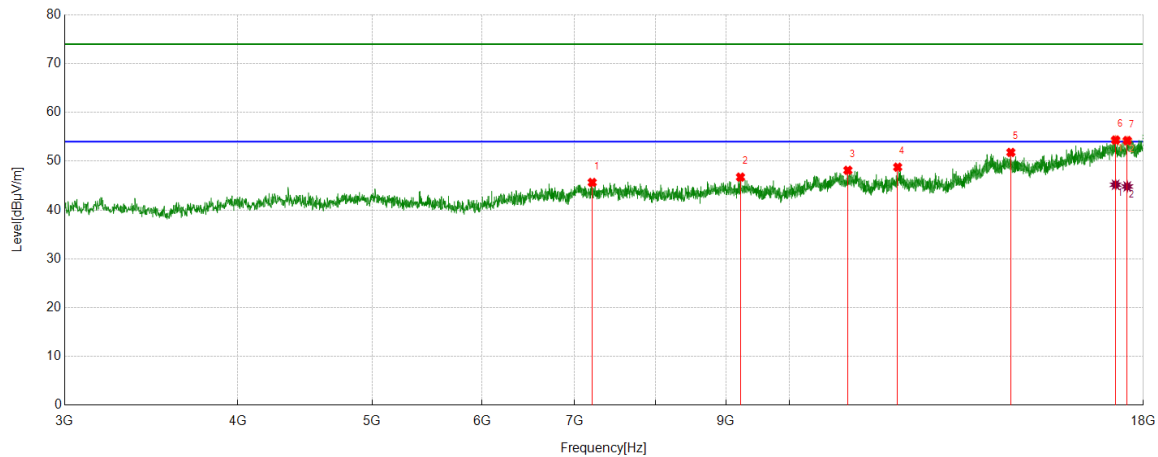
4. Average result: Peak detector, RBW: 1 MHz, VBW: 1/T MHz(refer to clause 7.1.).

5. For above 3GHz part, filter losses were only considered in the spurious frequency bands and the authorized band was not corrected for HPF losses.

6. Only the worst case emission was recorded, if it complies with the limit, the other emissions deemed to comply with the limit.



Test Mode	Channel	Polarization	Verdict
11N HT20	2462 MHz	Vertical	PASS



PK Result:

No.	Frequency	Reading Level	Correct Factor	Result	Limit	Margin	Remark
	[MHz]	[dBuV/m]	[dB]	[dBuV/m]	[dBuV/m]	[dB]	
1	7206.1508	36.78	8.87	45.65	74.00	-28.35	Vertical
2	9218.2773	37.42	9.32	46.74	74.00	-27.26	Vertical
3	11018.5023	35.65	12.49	48.14	74.00	-25.86	Vertical
4	11969.2462	36.32	12.46	48.78	74.00	-25.22	Vertical
5	14444.5556	35.75	16.05	51.80	74.00	-22.20	Vertical
6	17189.8987	35.03	19.21	54.24	74.00	-19.76	Vertical
7	17525.5657	34.99	19.11	54.10	74.00	-19.90	Vertical

AV Result:

No.	Frequency	Reading Level	Correct Factor	Result	Limit	Margin	Remark
	[MHz]	[dBuV/m]	[dB]	[dBuV/m]	[dBuV/m]	[dB]	
1	17189.8987	25.97	19.21	45.18	54.00	-8.82	Vertical
2	17525.5657	25.71	19.11	44.82	54.00	-9.18	Vertical

- Note: 1. Measurement = Reading Level + Correct Factor.
2. If peak result complies with AV limit, AV Result is deemed to comply with AV limit.
3. Peak result: Peak detector, RBW: 1 MHz, VBW: 3 MHz.
4. Average result: Peak detector, RBW: 1 MHz, VBW: 1/T MHz(refer to clause 7.1.).
5. For above 3GHz part, filter losses were only considered in the spurious frequency bands and the authorized band was not corrected for HPF losses.
6. Only the worst case emission was recorded, if it complies with the limit, the other emissions deemed to comply with the limit.

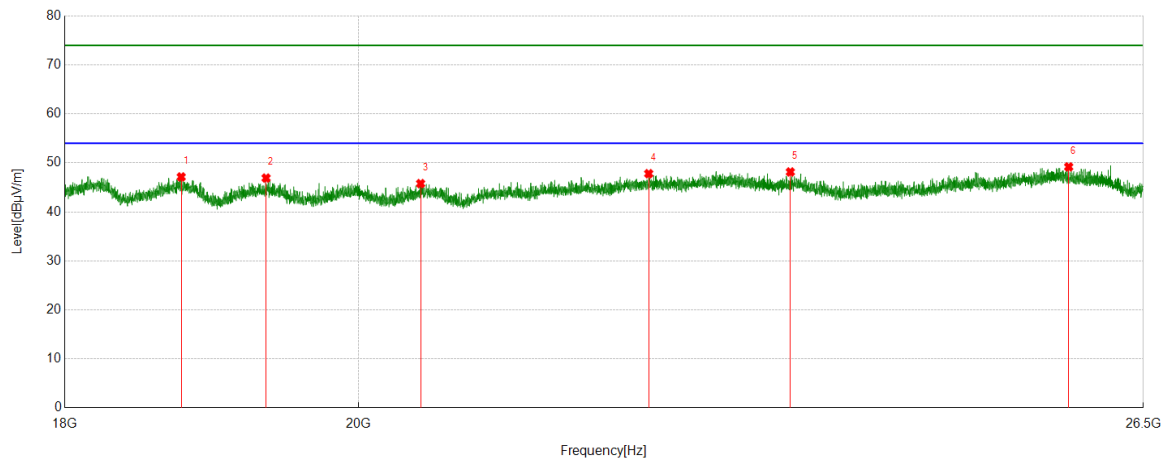


Part 3: 18GHz~26.5GHz

Antenna Type 2: External Dipole Antenna

SPURIOUS EMISSIONS 18GHz TO 26.5GHz (WORST-CASE CONFIGURATION)

Test Mode	Channel	Polarization	Verdict
11B	HCH	Horizontal	PASS

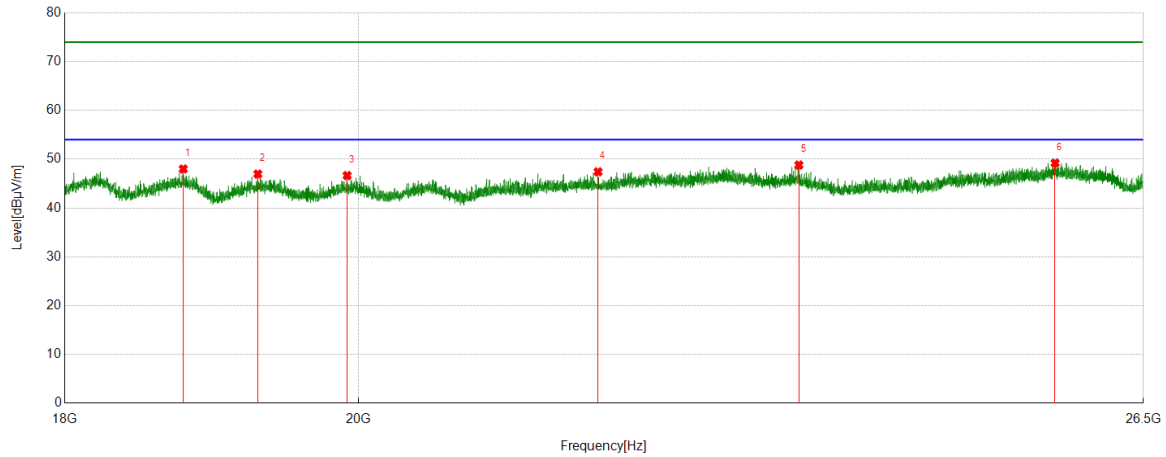


No.	Frequency	Reading Level	Correct Factor	Result	Limit	Margin	Remark
	[MHz]	[dBuV/m]	[dB]	[dBuV/m]	[dBuV/m]	[dB]	
1	18768.4768	48.57	-1.43	47.14	74.00	-26.86	Peak
2	19348.2348	48.22	-1.31	46.91	74.00	-27.09	Peak
3	20450.7951	46.76	-0.98	45.78	74.00	-28.22	Peak
4	22193.4693	47.89	-0.09	47.80	74.00	-26.20	Peak
5	23349.585	48.11	0.04	48.15	74.00	-25.85	Peak
6	25800.38	48.41	0.78	49.19	74.00	-24.81	Peak

- Note: 1. If Peak Result complies with AV limit, AV Result is deemed to comply with AV limit.
2. Test setup: RBW: 1 MHz, VBW: 3 MHz, Sweep time: auto.
3. Measurement = Reading Level + Correct Factor.
4. Only the worst case emission was recorded, if it complies with the limit, the other emissions deemed to comply with the limit.



Test Mode	Channel	Polarization	Verdict
11B	HCH	Vertical	PASS



No.	Frequency	Reading Level	Correct Factor	Result	Limit	Margin	Remark
	[MHz]	[dBuV/m]	[dB]	[dBuV/m]	[dBuV/m]	[dB]	
1	18782.0782	49.44	-1.44	48.00	74.00	-26.00	Peak
2	19291.2791	48.31	-1.35	46.96	74.00	-27.04	Peak
3	19918.6419	47.63	-0.98	46.65	74.00	-27.35	Peak
4	21793.9294	47.90	-0.48	47.42	74.00	-26.58	Peak
5	23420.9921	48.94	-0.13	48.81	74.00	-25.19	Peak
6	25674.5675	48.61	0.60	49.21	74.00	-24.79	Peak

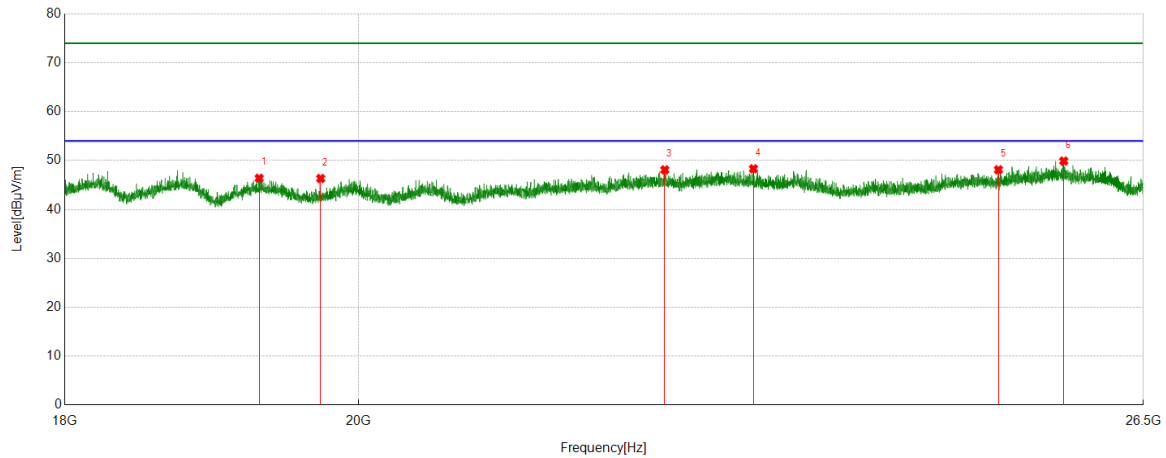
- Note: 1. If Peak Result complies with AV limit, AV Result is deemed to comply with AV limit.
2. Test setup: RBW: 1 MHz, VBW: 3 MHz, Sweep time: auto.
3. Measurement = Reading Level + Correct Factor.
4. Only the worst case emission was recorded, if it complies with the limit, the other emissions deemed to comply with the limit.



Antenna Type 1: PCB Antenna

SPURIOUS EMISSIONS 18GHz TO 26.5GHz (WORST-CASE CONFIGURATION)

Test Mode	Channel	Polarization	Verdict
11B	HCH	Horizontal	PASS

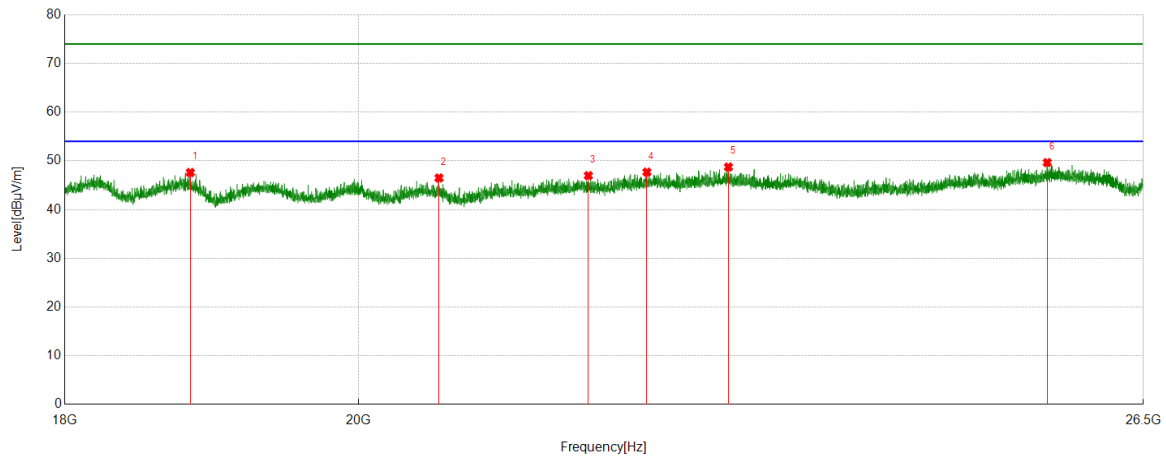


No.	Frequency	Reading Level	Correct Factor	Result	Limit	Margin	Remark
	[MHz]	[dBuV/m]	[dB]	[dBuV/m]	[dBuV/m]	[dB]	
1	19300.6301	47.72	-1.34	46.38	74.00	-27.62	Peak
2	19730.7731	47.45	-1.11	46.34	74.00	-27.66	Peak
3	22321.8322	48.03	0.07	48.10	74.00	-25.90	Peak
4	23042.7043	47.59	0.73	48.32	74.00	-25.68	Peak
5	25158.5659	48.34	-0.22	48.12	74.00	-25.88	Peak
6	25754.4754	49.18	0.72	49.90	74.00	-24.10	Peak

- Note: 1. If Peak Result complies with AV limit, AV Result is deemed to comply with AV limit.
2. Test setup: RBW: 1 MHz, VBW: 3 MHz, Sweep time: auto.
3. Measurement = Reading Level + Correct Factor.
4. Only the worst case emission was recorded, if it complies with the limit, the other emissions deemed to comply with the limit.



Test Mode	Channel	Polarization	Verdict
11B	HCH	Vertical	PASS



No.	Frequency	Reading Level	Correct Factor	Result	Limit	Margin	Remark
	[MHz]	[dBuV/m]	[dB]	[dBuV/m]	[dBuV/m]	[dB]	
1	18829.683	49.08	-1.47	47.61	74.00	-26.39	Peak
2	20585.9586	47.52	-1.03	46.49	74.00	-27.51	Peak
3	21718.2718	47.51	-0.54	46.97	74.00	-27.03	Peak
4	22179.0179	47.80	-0.11	47.69	74.00	-26.31	Peak
5	22836.9837	48.07	0.67	48.74	74.00	-25.26	Peak
6	25602.3102	49.15	0.50	49.65	74.00	-24.35	Peak

- Note: 1. If Peak Result complies with AV limit, AV Result is deemed to comply with AV limit.
2. Test setup: RBW: 1 MHz, VBW: 3 MHz, Sweep time: auto.
3. Measurement = Reading Level + Correct Factor.
4. Only the worst case emission was recorded, if it complies with the limit, the other emissions deemed to comply with the limit.

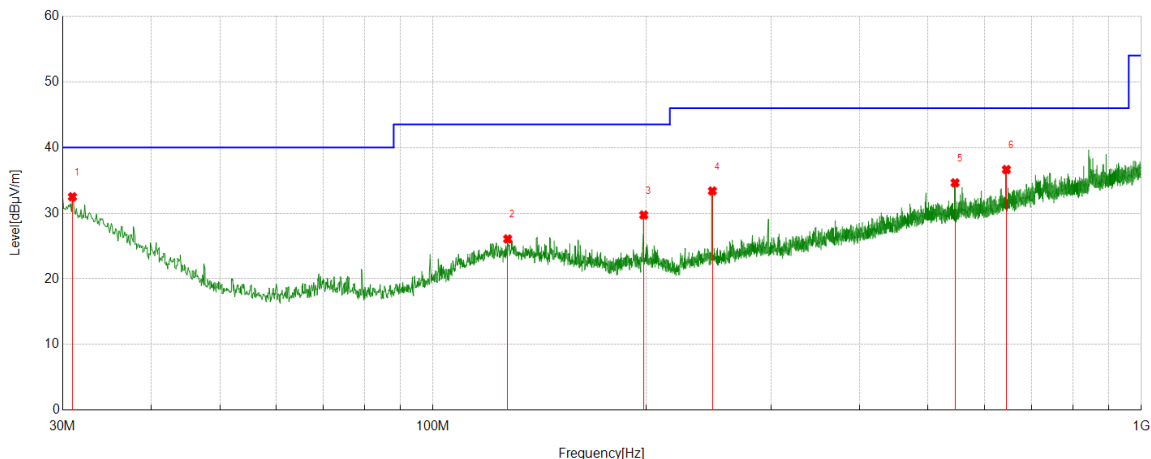


Part 4: 30MHz~1GHz

Antenna Type 2: External Dipole Antenna

SPURIOUS EMISSIONS 30M TO 1GHz (WORST-CASE CONFIGURATION)

Test Mode	Channel	Polarization	Verdict
11B	HCH	Horizontal	PASS

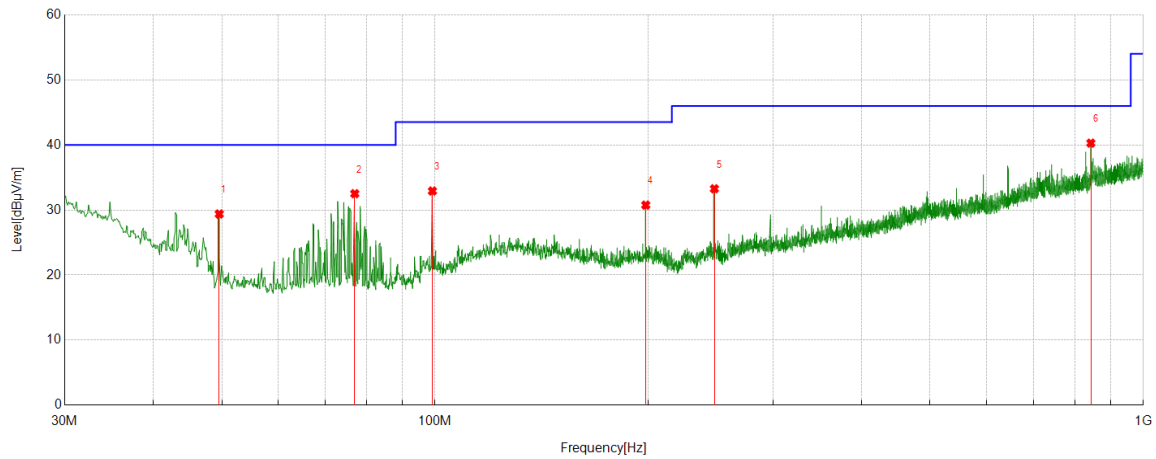


No.	Frequency	Reading Level	Correct Factor	Result	Limit	Margin	Remark
	[MHz]	[dBuV/m]	[dB]	[dBuV/m]	[dBuV/m]	[dB]	
1	30.9701	6.07	26.43	32.50	40.00	-7.50	Peak
2	127.4947	5.83	20.25	26.08	43.50	-17.42	Peak
3	198.4088	10.65	19.07	29.72	43.50	-13.78	Peak
4	247.9808	14.42	18.96	33.38	46.00	-12.62	Peak
5	545.8006	8.53	26.09	34.62	46.00	-11.38	Peak
6	644.9445	9.18	27.46	36.64	46.00	-9.36	Peak

Note: 1. If Peak Result complies with QP limit, QP Result is deemed to comply with QP limit.
2. Test setup: RBW: 120 kHz, VBW: 300 kHz, Sweep time: auto.
3. Measurement = Reading Level + Correct Factor.



Test Mode	Channel	Polarization	Verdict
11B	HCH	Vertical	PASS



No.	Frequency	Reading Level	Correct Factor	Result	Limit	Margin	Remark
	[MHz]	[dBuV/m]	[dB]	[dBuV/m]	[dBuV/m]	[dB]	
1	49.596	14.59	14.80	29.39	40.00	-10.61	Peak
2	77.0497	18.03	14.48	32.51	40.00	-7.49	Peak
3	99.1679	16.25	16.67	32.92	43.50	-10.58	Peak
4	198.4088	11.69	19.07	30.76	43.50	-12.74	Peak
5	247.9808	14.31	18.96	33.27	46.00	-12.73	Peak
6	843.1353	9.93	30.35	40.28	46.00	-5.72	Peak

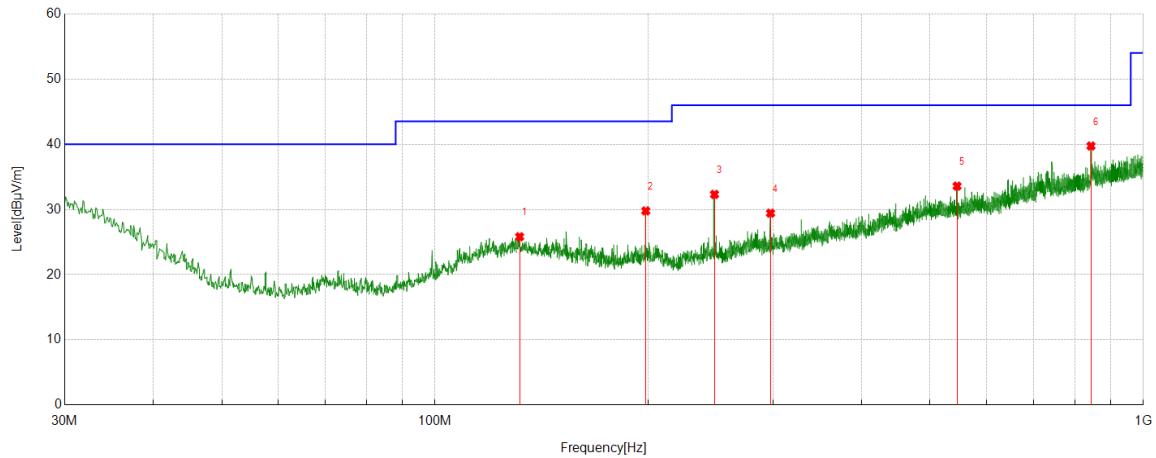
Note: 1. If Peak Result complies with QP limit, QP Result is deemed to comply with QP limit.
2. Test setup: RBW: 120 kHz, VBW: 300 kHz, Sweep time: auto.
3. Measurement = Reading Level + Correct Factor.



Antenna Type 1: PCB Antenna

SPURIOUS EMISSIONS 30M TO 1GHz (WORST-CASE CONFIGURATION)

Test Mode	Channel	Polarization	Verdict
11B	HCH	Horizontal	PASS

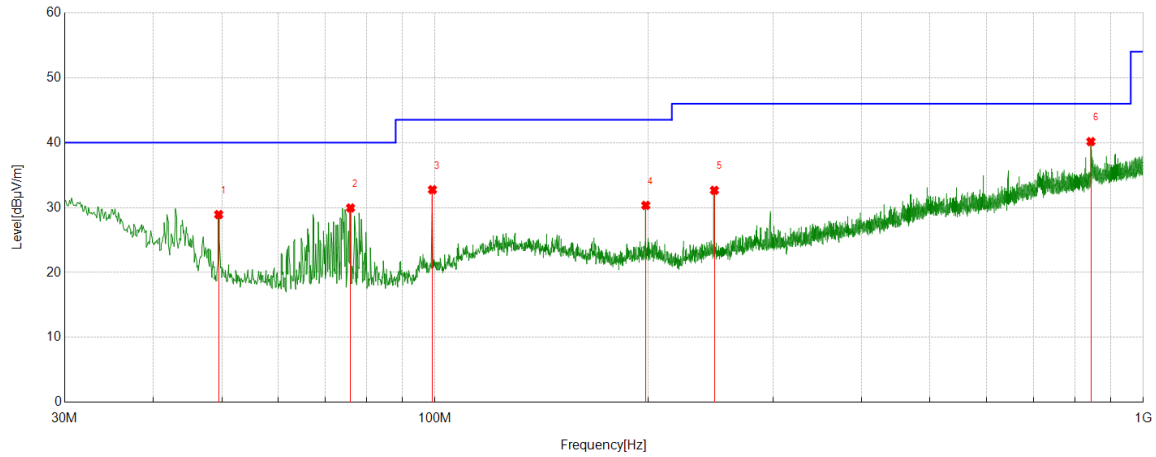


No.	Frequency	Reading Level	Correct Factor	Result	Limit	Margin	Remark
	[MHz]	[dBuV/m]	[dB]	[dBuV/m]	[dBuV/m]	[dB]	
1	131.6662	5.65	20.17	25.82	43.50	-17.68	Peak
2	198.4088	10.71	19.07	29.78	43.50	-13.72	Peak
3	248.0778	13.35	18.96	32.31	46.00	-13.69	Peak
4	297.6498	8.95	20.48	29.43	46.00	-16.57	Peak
5	545.8006	7.49	26.09	33.58	46.00	-12.42	Peak
6	843.4263	9.37	30.36	39.73	46.00	-6.27	Peak

Note: 1. If Peak Result complies with QP limit, QP Result is deemed to comply with QP limit.
2. Test setup: RBW: 120 kHz, VBW: 300 kHz, Sweep time: auto.
3. Measurement = Reading Level + Correct Factor.



Test Mode	Channel	Polarization	Verdict
11B	HCH	Vertical	PASS



No.	Frequency	Reading Level	Correct Factor	Result	Limit	Margin	Remark
	[MHz]	[dBuV/m]	[dB]	[dBuV/m]	[dBuV/m]	[dB]	
1	49.499	14.07	14.86	28.93	40.00	-11.07	Peak
2	75.9826	15.41	14.54	29.95	40.00	-10.05	Peak
3	99.1679	16.08	16.67	32.75	43.50	-10.75	Peak
4	198.4088	11.27	19.07	30.34	43.50	-13.16	Peak
5	247.9808	13.70	18.96	32.66	46.00	-13.34	Peak
6	843.2323	9.81	30.35	40.16	46.00	-5.84	Peak

Note: 1. If Peak Result complies with QP limit, QP Result is deemed to comply with QP limit.
2. Test setup: RBW: 120 kHz, VBW: 300 kHz, Sweep time: auto.
3. Measurement = Reading Level + Correct Factor.

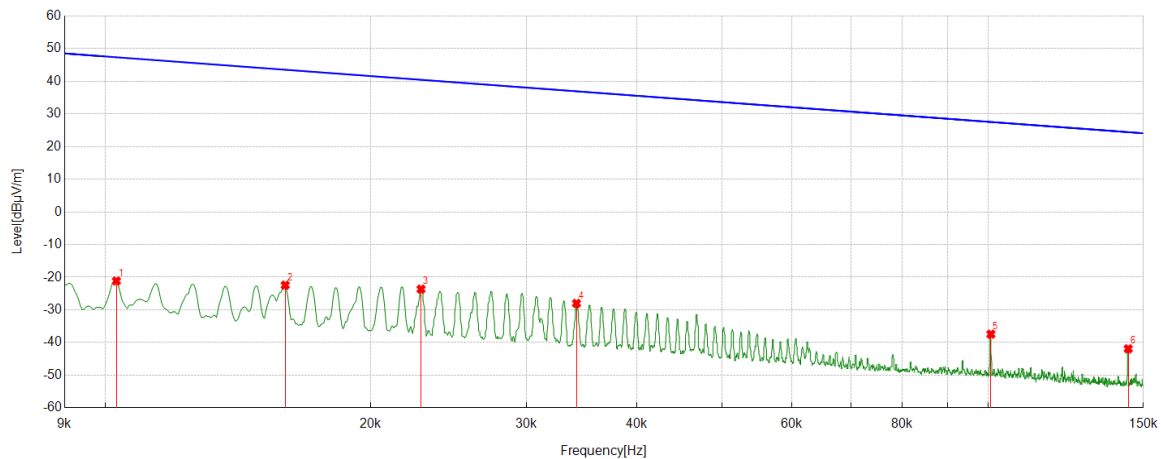


Part 5: 9kHz~30MHz

Antenna Type 2: External Dipole Antenna

SPURIOUS EMISSIONS Below 30MHz (WORST CASE CONFIGURATION-FACE ON)

Test Mode	Channel	Frequency Range	Verdict
11B	HCH	9kHz~150kHz	PASS

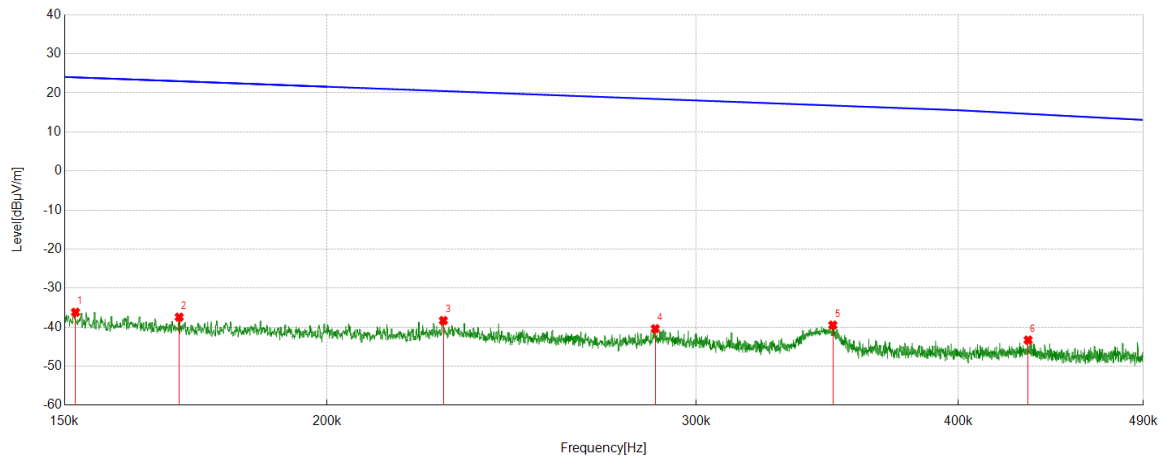


No.	Frequency	Reading Level	Correct Factor	FCC Result	FCC Limit	ISED Result	ISED Limit	Margin	Remark
	[MHz]	[dBuV/m]	[dB]	[dBuV/m]	[dBuV/m]	[dBuA/m]	[dBuA/m]	[dB]	
1	0.0103	39.99	-61.14	-21.15	47.37	-72.65	-4.13	-68.52	Peak
2	0.0160	38.54	-60.97	-22.43	43.54	-73.93	-7.96	-65.97	Peak
3	0.0228	37.21	-60.86	-23.65	40.43	-75.15	-11.07	-64.08	Peak
4	0.0342	32.94	-60.94	-28.00	36.91	-79.50	-14.59	-64.91	Peak
5	0.1008	23.30	-60.73	-37.43	27.53	-88.93	-23.97	-64.96	Peak
6	0.1442	19.34	-61.25	-41.91	24.42	-93.41	-27.08	-66.33	Peak

- Note: 1. Measurement = Reading Level + Correct Factor.
2. If Peak Result complies with AV and QP limit, AV and QP Result are deemed to comply with AV limit.
3. All 3 polarizations(Horizontal, Face-on and Face-off) of the loop antenna had been tested, but only the worst data recorded in the report.



Test Mode	Channel	Frequency Range	Verdict
11B	HCH	150kHz~490kHz	PASS

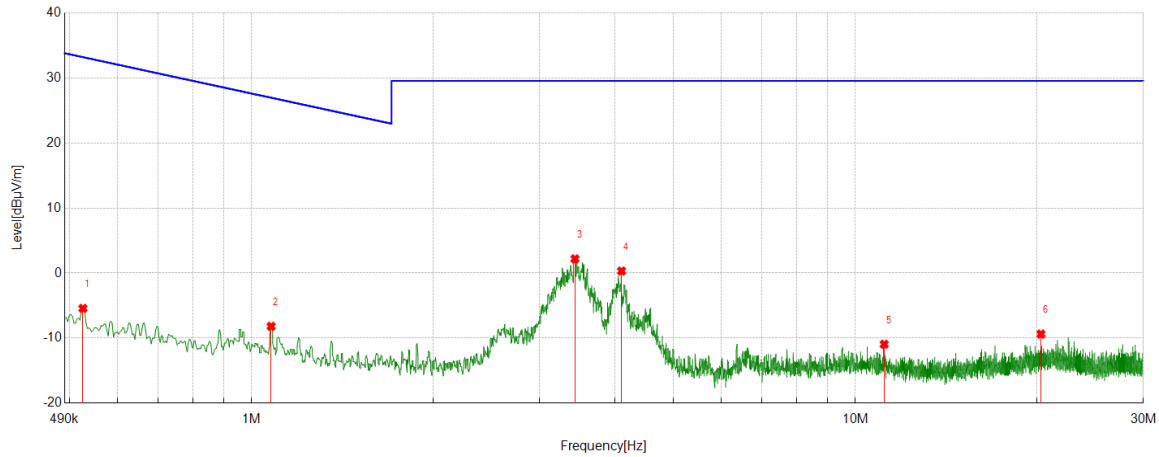


No.	Frequency	Reading Level	Correct Factor	FCC Result	FCC Limit	ISED Result	ISED Limit	Margin	Remark
	[MHz]	[dBuV/m]	[dB]	[dBuV/m]	[dBuV/m]	[dBuA/m]	[dBuA/m]	[dB]	
1	0.1518	25.12	-61.31	-36.19	23.98	-87.69	-27.52	-60.17	Peak
2	0.1701	23.78	-61.21	-37.43	22.99	-88.93	-28.51	-60.42	Peak
3	0.2273	22.62	-60.92	-38.30	20.47	-89.80	-31.03	-58.77	Peak
4	0.2868	20.37	-60.77	-40.40	18.45	-91.90	-33.05	-58.85	Peak
5	0.3485	21.25	-60.72	-39.47	16.76	-90.97	-34.74	-56.23	Peak
6	0.4318	17.35	-60.65	-43.30	14.62	-94.80	-36.88	-57.92	Peak

- Note: 1. Measurement = Reading Level + Correct Factor.
2. If Peak Result complies with AV and QP limit, AV and QP Result are deemed to comply with AV limit.
3. All 3 polarizations(Horizontal, Face-on and Face-off) of the loop antenna had been tested, but only the worst data recorded in the report.



Test Mode	Channel	Frequency Range	Verdict
11B	HCH	490kHz~30MHz	PASS



No.	Frequency	Reading Level	Correct Factor	FCC Result	FCC Limit	ISED Result	ISED Limit	Margin	Remark
	[MHz]	[dBuV/m]	[dB]	[dBuV/m]	[dBuV/m]	[dBuA/m]	[dBuA/m]	[dB]	
1	0.5254	15.18	-20.60	-5.42	33.19	-56.92	-18.31	-38.61	Peak
2	1.0773	12.17	-20.35	-8.18	26.96	-59.68	-24.54	-35.14	Peak
3	3.4324	22.47	-20.28	2.19	29.54	-49.31	-21.96	-27.35	Peak
4	4.0994	20.38	-20.06	0.32	29.54	-51.18	-21.96	-29.22	Peak
5	11.1648	8.00	-18.93	-10.93	29.54	-62.43	-21.96	-40.47	Peak
6	20.302	7.99	-17.36	-9.37	29.54	-60.87	-21.96	-38.91	Peak

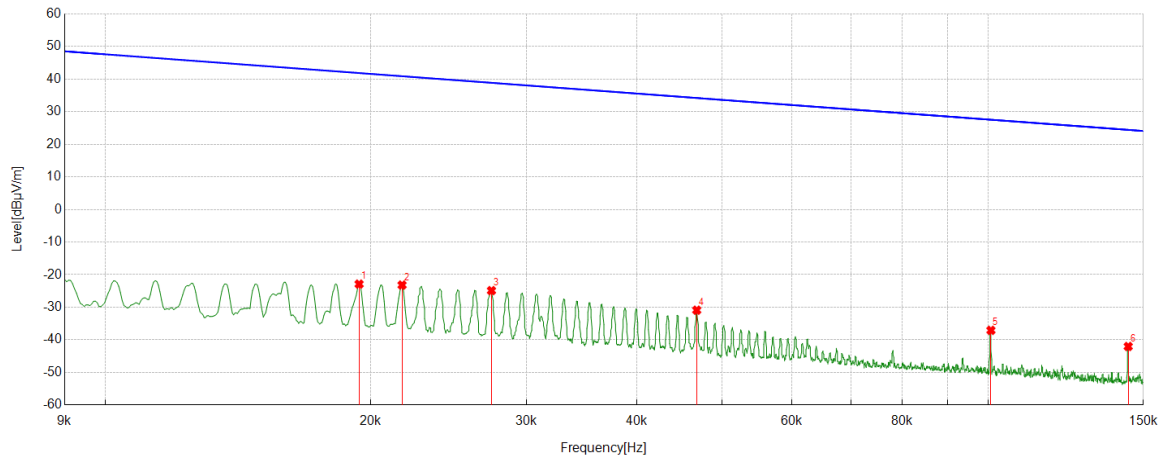
- Note: 1. Measurement = Reading Level + Correct Factor.
2. If Peak Result complies with AV and QP limit, AV and QP Result are deemed to comply with AV limit.
3. All 3 polarizations(Horizontal, Face-on and Face-off) of the loop antenna had been tested, but only the worst data recorded in the report.



Antenna Type 1: PCB Antenna

SPURIOUS EMISSIONS Below 30MHz (WORST CASE CONFIGURATION-FACE ON)

Test Mode	Channel	Frequency Range	Verdict
11B	HCH	9kHz~150kHz	PASS

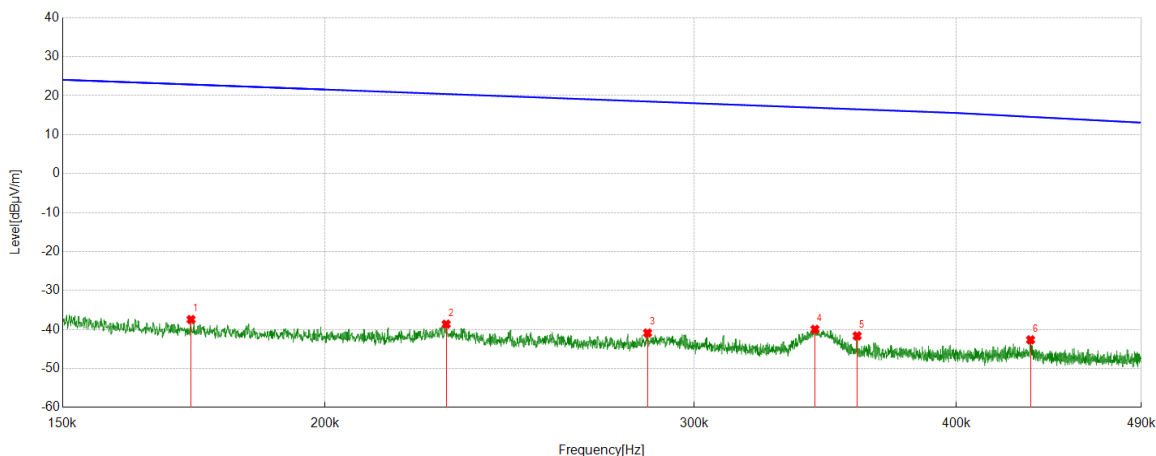


No.	Frequency	Reading Level	Correct Factor	FCC Result	FCC Limit	ISED Result	ISED Limit	Margin	Remark
	[MHz]	[dBuV/m]	[dB]	[dBuV/m]	[dBuV/m]	[dBuA/m]	[dBuA/m]	[dB]	
1	0.0194	37.98	-60.87	-22.89	41.85	-74.39	-9.65	-64.74	Peak
2	0.0217	37.68	-60.86	-23.18	40.87	-74.68	-10.63	-64.05	Peak
3	0.0274	36.00	-60.89	-24.89	38.85	-76.39	-12.65	-63.74	Peak
4	0.0468	30.13	-61.02	-30.89	34.19	-82.39	-17.31	-65.08	Peak
5	0.1008	23.66	-60.73	-37.07	27.53	-88.57	-23.97	-64.60	Peak
6	0.1442	19.23	-61.25	-42.02	24.42	-93.52	-27.08	-66.44	Peak

- Note: 1. Measurement = Reading Level + Correct Factor.
2. If Peak Result complies with AV and QP limit, AV and QP Result are deemed to comply with AV limit.
3. All 3 polarizations(Horizontal, Face-on and Face-off) of the loop antenna had been tested, but only the worst data recorded in the report.



Test Mode	Channel	Frequency Range	Verdict
11B	HCH	150kHz~490kHz	PASS

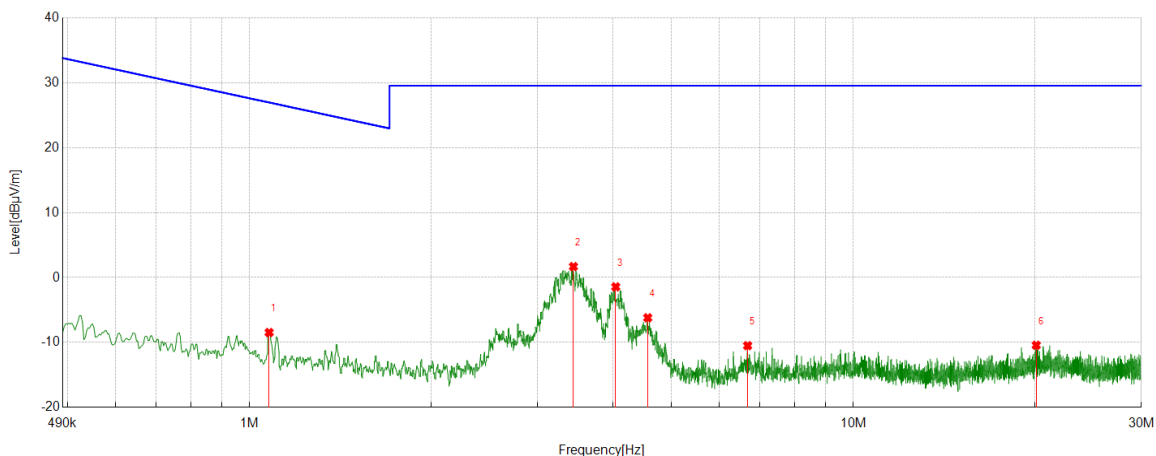


No.	Frequency	Reading Level	Correct Factor	FCC Result	FCC Limit	ISED Result	ISED Limit	Margin	Remark
	[MHz]	[dBuV/m]	[dB]	[dBuV/m]	[dBuV/m]	[dBuA/m]	[dBuA/m]	[dB]	
1	0.1727	23.77	-61.20	-37.43	22.86	-88.93	-28.64	-60.29	Peak
2	0.2285	22.28	-60.92	-38.64	20.42	-90.14	-31.08	-59.06	Peak
3	0.285	19.88	-60.77	-40.89	18.50	-92.39	-33.00	-59.39	Peak
4	0.3425	20.78	-60.73	-39.95	16.91	-91.45	-34.59	-56.86	Peak
5	0.3587	19.07	-60.71	-41.64	16.51	-93.14	-34.99	-58.15	Peak
6	0.4339	18.01	-60.65	-42.64	14.57	-94.14	-36.93	-57.21	Peak

- Note: 1. Measurement = Reading Level + Correct Factor.
2. If Peak Result complies with AV and QP limit, AV and QP Result are deemed to comply with AV limit.
3. All 3 polarizations(Horizontal, Face-on and Face-off) of the loop antenna had been tested, but only the worst data recorded in the report.



Test Mode	Channel	Frequency Range	Verdict
11B	HCH	490kHz~30MHz	PASS



No.	Frequency	Reading Level	Correct Factor	FCC Result	FCC Limit	ISED Result	ISED Limit	Margin	Remark
	[MHz]	[dBuV/m]	[dB]	[dBuV/m]	[dBuV/m]	[dBuA/m]	[dBuA/m]	[dB]	
1	1.0773	11.89	-20.35	-8.46	26.96	-59.96	-24.54	-35.42	Peak
2	3.4383	21.97	-20.28	1.69	29.54	-49.81	-21.96	-27.85	Peak
3	4.0404	18.62	-20.05	-1.43	29.54	-52.93	-21.96	-30.97	Peak
4	4.5657	13.95	-20.14	-6.19	29.54	-57.69	-21.96	-35.73	Peak
5	6.6818	9.27	-19.76	-10.49	29.54	-61.99	-21.96	-40.03	Peak
6	20.0925	6.92	-17.34	-10.42	29.54	-61.92	-21.96	-39.96	Peak

- Note: 1. Measurement = Reading Level + Correct Factor.
2. If Peak Result complies with AV and QP limit, AV and QP Result are deemed to comply with AV limit.
3. All 3 polarizations(Horizontal, Face-on and Face-off) of the loop antenna had been tested, but only the worst data recorded in the report.

8. AC POWER LINE CONDUCTED EMISSIONS

LIMITS

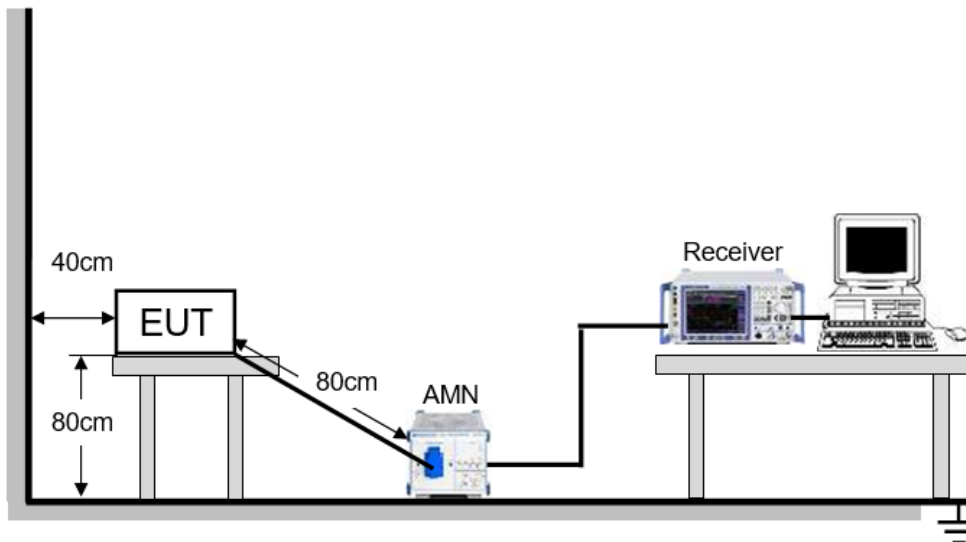
Please refer to FCC §15.207 (a)

FREQUENCY (MHz)	Limit (dBuV)	
	Quasi-peak	Average
0.15 -0.5	66 - 56 *	56 - 46 *
0.50 -5.0	56.00	46.00
5.0 -30.0	60.00	50.00

TEST ENVIRONMENT

Temperature	22°C	Relative Humidity	56%
Atmosphere Pressure	101kPa	Test Voltage	AC 120V

TEST SETUP AND PROCEDURE



The EUT is put on a table of non-conducting material that is 80cm high. The vertical conducting wall of shielding is located 40cm to the rear of the EUT. The power line of the EUT is connected to the AC mains through an Artificial Mains Network (A.M.N.). A EMI Measurement Receiver (R&S Test Receiver ESR3) is used to test the emissions from both sides of AC line. According to the requirements in Section 6.2 of ANSI C63.10-2013. Conducted emissions from the EUT measured in the frequency range between 0.15 MHz and 30MHz using CISPR Quasi-Peak and average detector mode. The bandwidth of EMI test receiver is set at 9kHz.

The arrangement of the equipment is installed to meet the standards and operating in a manner, which tends to maximize its emission characteristics in a normal application.