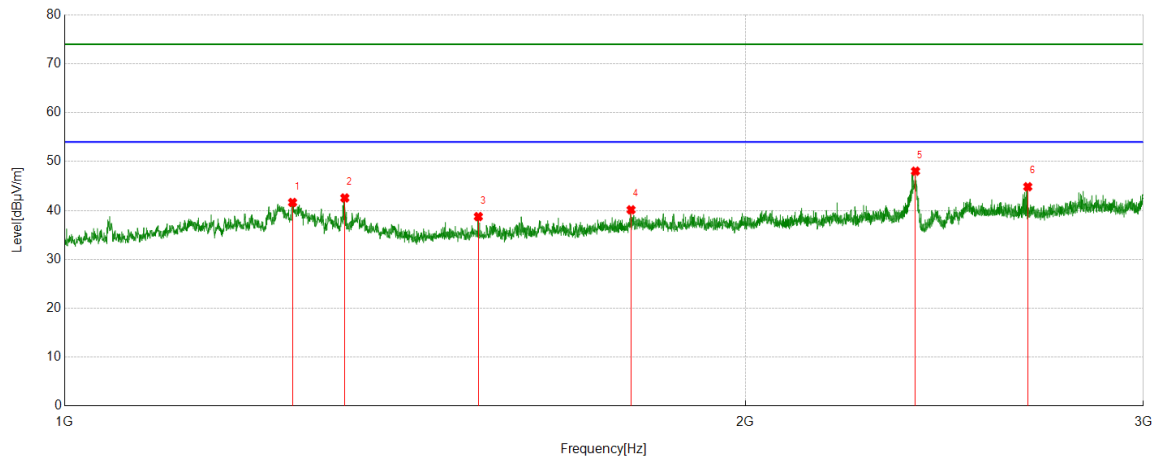




Test Mode	Channel	Polarization	Verdict
11G	2412 MHz	Vertical	PASS



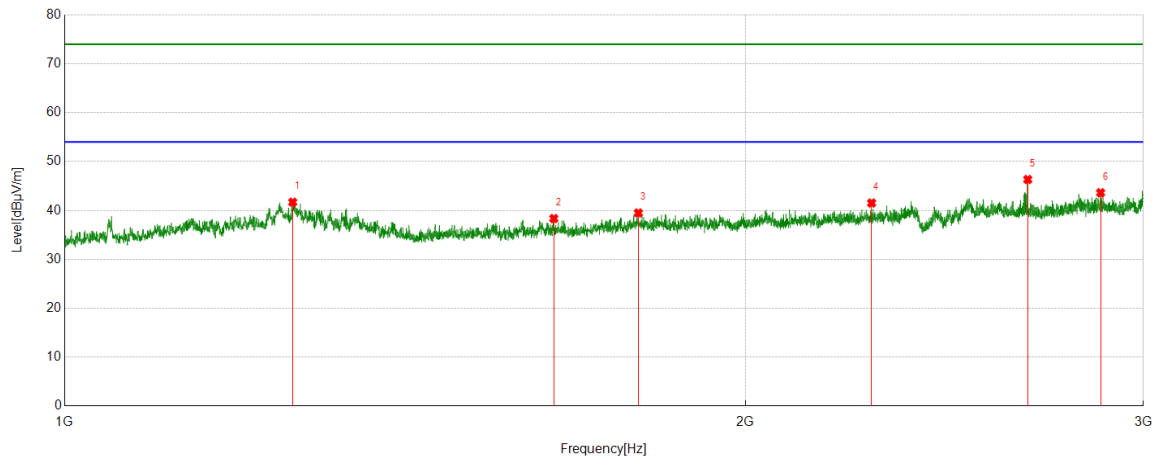
PK Result:

No.	Frequency	Reading Level	Correct Factor	Result	Limit	Margin	Remark
	[MHz]	[dBuV/m]	[dB]	[dBuV/m]	[dBuV/m]	[dB]	
1	1261.24378	47.30	-5.67	41.63	74.00	-32.37	Vertical
2	1330.2127	48.24	-5.68	42.56	74.00	-31.44	Vertical
3	1524.1428	44.33	-5.59	38.74	74.00	-35.26	Vertical
4	1780.593	44.07	-3.94	40.13	74.00	-33.87	Vertical
5	2378.7412	49.12	-1.09	48.03	74.00	-25.97	Vertical
6	2667.2703	45.57	-0.72	44.85	74.00	-29.15	Vertical

- Note: 1. Measurement = Reading Level + Correct Factor.
2. If Peak Result complies with AV limit, AV Result is deemed to comply with AV limit.
3. Test setup: RBW: 1 MHz, VBW: 3 MHz, Sweep time: auto.
4. Peak: Peak detector.
5. For below 3GHz part, filter losses were only considered in the spurious frequency bands and the authorized band was not corrected for Band Reject Filter losses.
6. Only the worst case emission was recorded, if it complies with the limit, the other emissions deemed to comply with the limit.



Test Mode	Channel	Polarization	Verdict
11G	2427 MHz	Horizontal	PASS



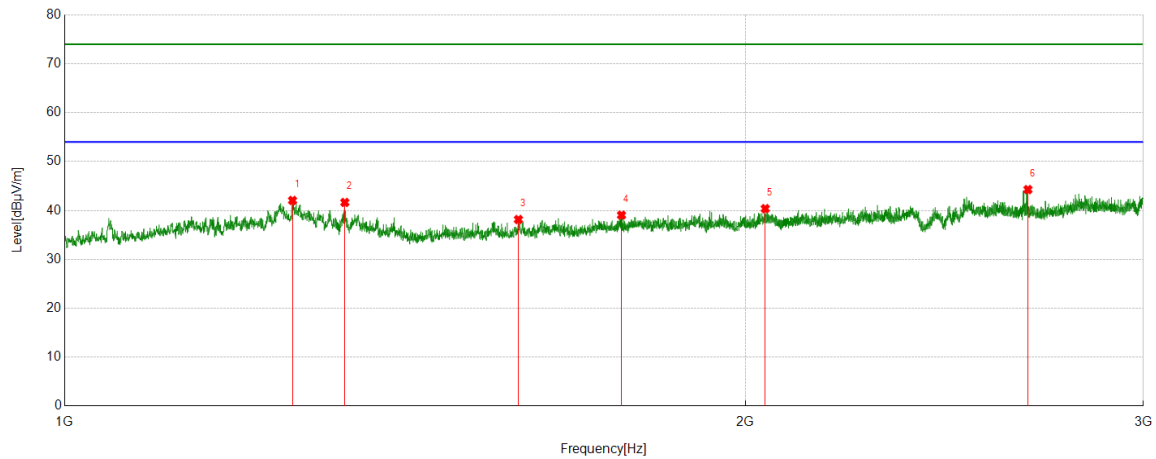
PK Result:

No.	Frequency	Reading Level	Correct Factor	Result	Limit	Margin	Remark
	[MHz]	[dBuV/m]	[dB]	[dBuV/m]	[dBuV/m]	[dB]	
1	1261.5189	47.35	-5.66	41.69	74.00	-32.31	Horizontal
2	1645.7721	43.36	-5.01	38.35	74.00	-35.65	Horizontal
3	1793.7565	43.27	-3.78	39.49	74.00	-34.51	Horizontal
4	2274.7492	43.55	-2.03	41.52	74.00	-32.48	Horizontal
5	2666.6913	47.05	-0.71	46.34	74.00	-27.66	Horizontal
6	2872.2592	43.44	0.18	43.62	74.00	-30.38	Horizontal

- Note: 1. Measurement = Reading Level + Correct Factor.
2. If Peak Result complies with AV limit, AV Result is deemed to comply with AV limit.
3. Test setup: RBW: 1 MHz, VBW: 3 MHz, Sweep time: auto.
4. Peak: Peak detector.
5. For below 3GHz part, filter losses were only considered in the spurious frequency bands and the authorized band was not corrected for Band Reject Filter losses.
6. Only the worst case emission was recorded, if it complies with the limit, the other emissions deemed to comply with the limit.



Test Mode	Channel	Polarization	Verdict
11G	2427 MHz	Vertical	PASS



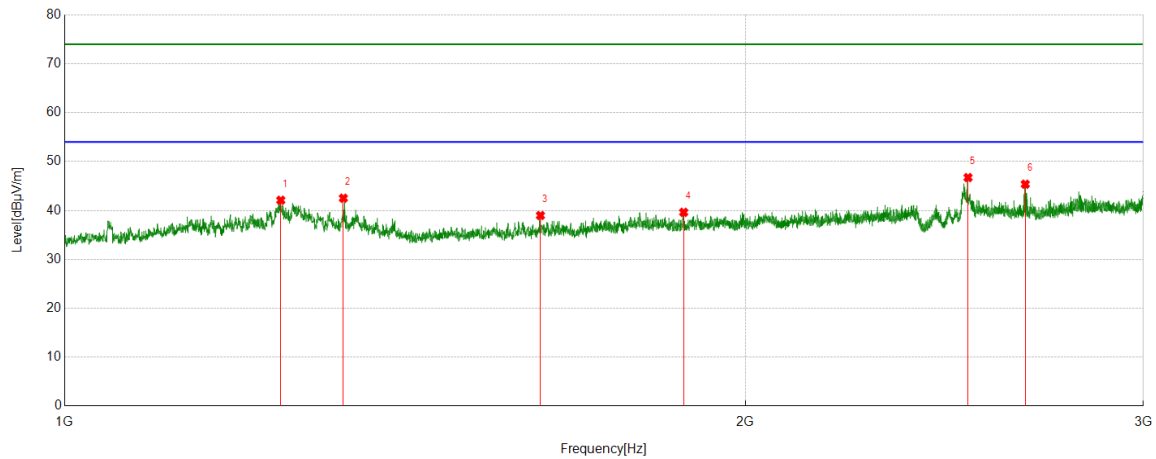
PK Result:

No.	Frequency	Reading Level	Correct Factor	Result	Limit	Margin	Remark
	[MHz]	[dBuV/m]	[dB]	[dBuV/m]	[dBuV/m]	[dB]	
1	1261.2069	47.72	-5.67	42.05	74.00	-31.95	Vertical
2	1330.2465	47.32	-5.68	41.64	74.00	-32.36	Vertical
3	1587.5465	43.22	-5.07	38.15	74.00	-35.85	Vertical
4	1763.2219	43.14	-4.10	39.04	74.00	-34.96	Vertical
5	2041.2505	42.76	-2.39	40.37	74.00	-33.63	Vertical
6	2667.2479	44.99	-0.72	44.27	74.00	-29.73	Vertical

- Note: 1. Measurement = Reading Level + Correct Factor.
2. If Peak Result complies with AV limit, AV Result is deemed to comply with AV limit.
3. Test setup: RBW: 1 MHz, VBW: 3 MHz, Sweep time: auto.
4. Peak: Peak detector.
5. For below 3GHz part, filter losses were only considered in the spurious frequency bands and the authorized band was not corrected for Band Reject Filter losses.
6. Only the worst case emission was recorded, if it complies with the limit, the other emissions deemed to comply with the limit.



Test Mode	Channel	Polarization	Verdict
11G	2437 MHz	Horizontal	PASS



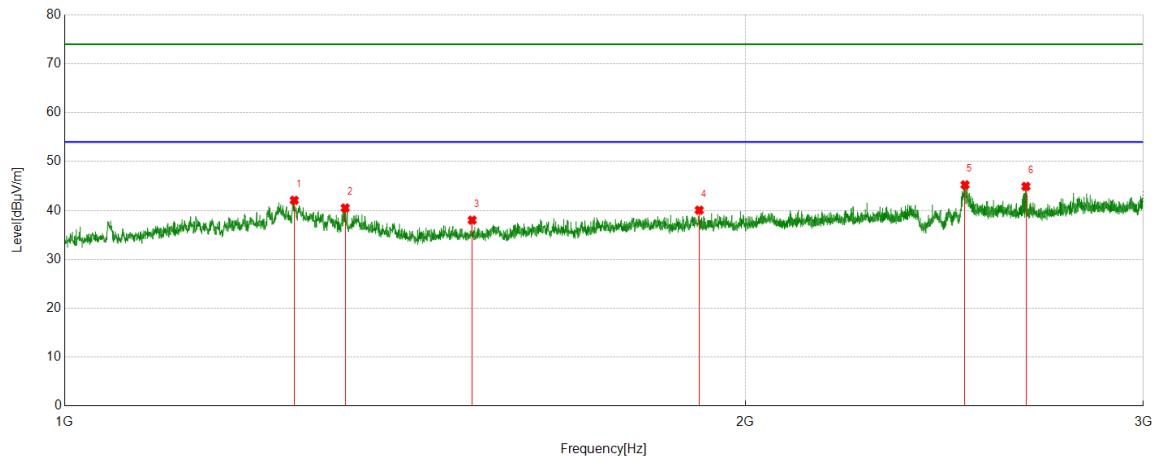
PK Result:

No.	Frequency	Reading Level	Correct Factor	Result	Limit	Margin	Remark
	[MHz]	[dBuV/m]	[dB]	[dBuV/m]	[dBuV/m]	[dB]	
1	1246.2157	47.72	-5.63	42.09	74.00	-31.91	Horizontal
2	1328.2495	48.18	-5.67	42.51	74.00	-31.49	Horizontal
3	1623.5680	44.00	-5.03	38.97	74.00	-35.03	Horizontal
4	1878.5482	43.27	-3.65	39.62	74.00	-34.38	Horizontal
5	2509.5274	47.12	-0.39	46.73	74.00	-27.27	Horizontal
6	2660.24159	46.04	-0.67	45.37	74.00	-28.63	Horizontal

- Note: 1. Measurement = Reading Level + Correct Factor.
2. If Peak Result complies with AV limit, AV Result is deemed to comply with AV limit.
3. Test setup: RBW: 1 MHz, VBW: 3 MHz, Sweep time: auto.
4. Peak: Peak detector.
5. For below 3GHz part, filter losses were only considered in the spurious frequency bands and the authorized band was not corrected for Band Reject Filter losses.
6. Only the worst case emission was recorded, if it complies with the limit, the other emissions deemed to comply with the limit.



Test Mode	Channel	Polarization	Verdict
11G	2437 MHz	Vertical	PASS



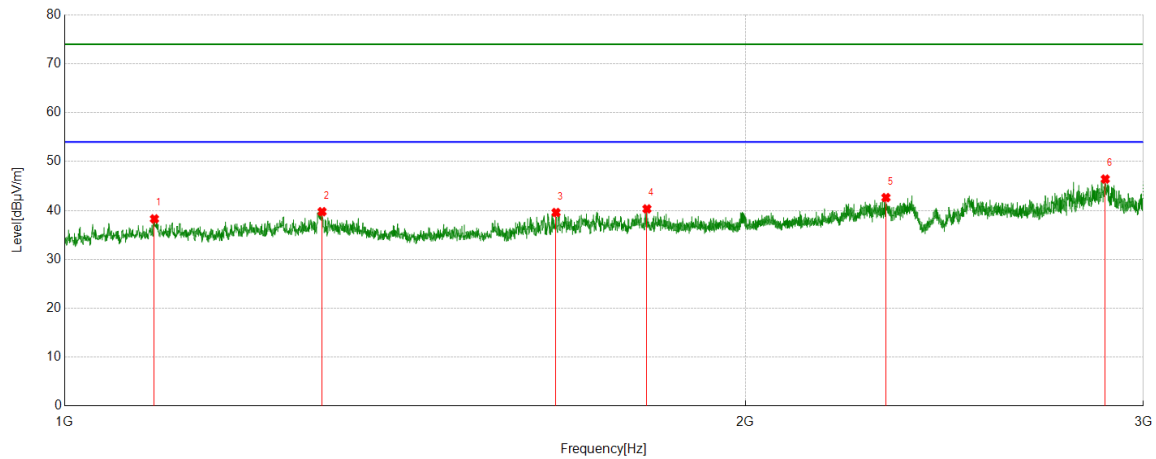
PK Result:

No.	Frequency	Reading Level	Correct Factor	Result	Limit	Margin	Remark
	[MHz]	[dBuV/m]	[dB]	[dBuV/m]	[dBuV/m]	[dB]	
1	1263.4996	47.69	-5.61	42.08	74.00	-31.92	Vertical
2	1330.7189	46.19	-5.68	40.51	74.00	-33.49	Vertical
3	1514.5159	43.59	-5.57	38.02	74.00	-35.98	Vertical
4	1908.4919	43.37	-3.31	40.06	74.00	-33.94	Vertical
5	2501.7051	45.68	-0.44	45.24	74.00	-28.76	Vertical
6	2662.2909	45.60	-0.68	44.92	74.00	-29.08	Vertical

- Note: 1. Measurement = Reading Level + Correct Factor.
2. If Peak Result complies with AV limit, AV Result is deemed to comply with AV limit.
3. Test setup: RBW: 1 MHz, VBW: 3 MHz, Sweep time: auto.
4. Peak: Peak detector.
5. For below 3GHz part, filter losses were only considered in the spurious frequency bands and the authorized band was not corrected for Band Reject Filter losses.
6. Only the worst case emission was recorded, if it complies with the limit, the other emissions deemed to comply with the limit.



Test Mode	Channel	Polarization	Verdict
11G	2447 MHz	Horizontal	PASS



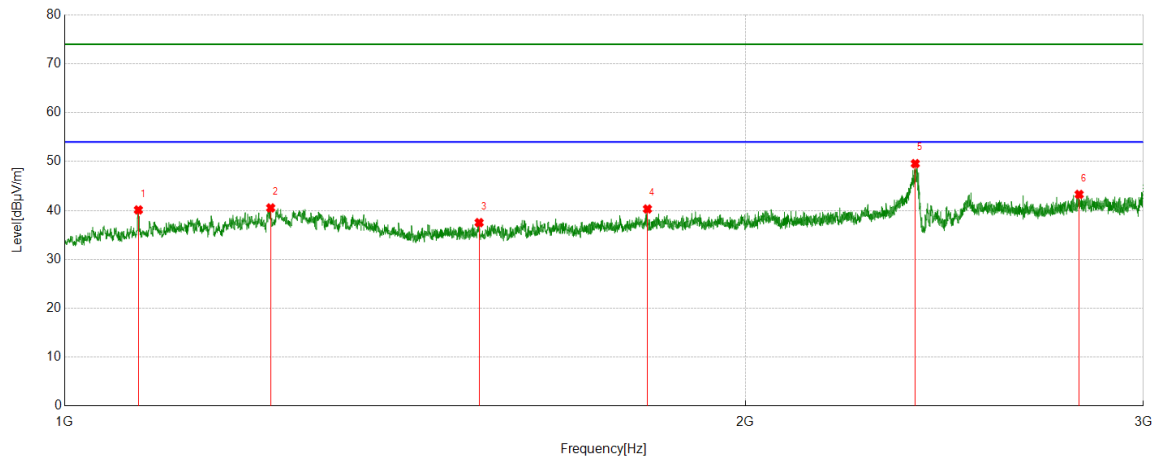
PK Result:

No.	Frequency	Reading Level	Correct Factor	Result	Limit	Margin	Remark
	[MHz]	[dBuV/m]	[dB]	[dBuV/m]	[dBuV/m]	[dB]	
1	1095.7628	43.87	-5.59	38.28	74.00	-35.72	Horizontal
2	1299.7491	45.59	-5.84	39.75	74.00	-34.25	Horizontal
3	1649.5414	44.56	-4.98	39.58	74.00	-34.42	Horizontal
4	1809.5205	44.39	-4.07	40.32	74.00	-33.68	Horizontal
5	2308.2162	44.32	-1.69	42.63	74.00	-31.37	Horizontal
6	2886.2079	45.97	0.45	46.42	74.00	-27.58	Horizontal

- Note: 1. Measurement = Reading Level + Correct Factor.
2. If Peak Result complies with AV limit, AV Result is deemed to comply with AV limit.
3. Test setup: RBW: 1 MHz, VBW: 3 MHz, Sweep time: auto.
4. Peak: Peak detector.
5. For below 3GHz part, filter losses were only considered in the spurious frequency bands and the authorized band was not corrected for Band Reject Filter losses.
6. Only the worst case emission was recorded, if it complies with the limit, the other emissions deemed to comply with the limit.



Test Mode	Channel	Polarization	Verdict
11G	2447 MHz	Vertical	PASS



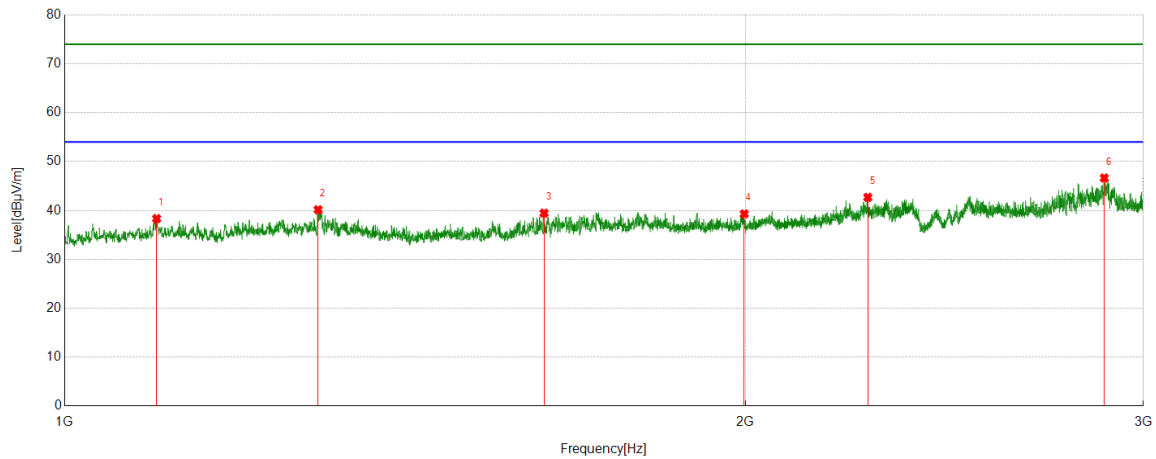
PK Result:

No.	Frequency	Reading Level	Correct Factor	Result	Limit	Margin	Remark
	[MHz]	[dBuV/m]	[dB]	[dBuV/m]	[dBuV/m]	[dB]	
1	1078.1628	45.52	-5.41	40.11	74.00	-33.89	Vertical
2	1233.4627	46.15	-5.63	40.52	74.00	-33.48	Vertical
3	1525.2428	43.14	-5.63	37.51	74.00	-36.49	Vertical
4	1810.4693	44.37	-4.07	40.30	74.00	-33.70	Vertical
5	2378.2501	50.67	-1.09	49.58	74.00	-24.42	Vertical
6	2810.2041	43.51	-0.23	43.28	74.00	-30.72	Vertical

- Note: 1. Measurement = Reading Level + Correct Factor.
2. If Peak Result complies with AV limit, AV Result is deemed to comply with AV limit.
3. Test setup: RBW: 1 MHz, VBW: 3 MHz, Sweep time: auto.
4. Peak: Peak detector.
5. For below 3GHz part, filter losses were only considered in the spurious frequency bands and the authorized band was not corrected for Band Reject Filter losses.
6. Only the worst case emission was recorded, if it complies with the limit, the other emissions deemed to comply with the limit.



Test Mode	Channel	Polarization	Verdict
11G	2462 MHz	Horizontal	PASS



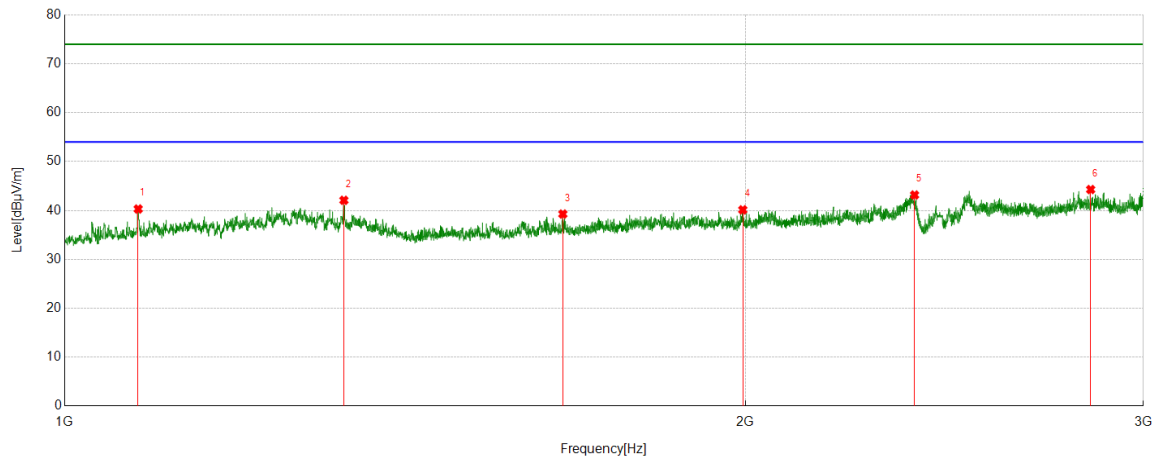
PK Result:

No.	Frequency	Reading Level	Correct Factor	Result	Limit	Margin	Remark
	[MHz]	[dBuV/m]	[dB]	[dBuV/m]	[dBuV/m]	[dB]	
1	1098.2703	43.92	-5.58	38.34	74.00	-35.66	Horizontal
2	1294.5291	45.94	-5.79	40.15	74.00	-33.85	Horizontal
3	1629.5082	44.52	-5.07	39.45	74.00	-34.55	Horizontal
4	1998.3678	42.31	-3.01	39.30	74.00	-34.70	Horizontal
5	2266.8977	44.79	-2.11	42.68	74.00	-31.32	Horizontal
6	2883.0723	46.27	0.37	46.64	74.00	-27.36	Horizontal

- Note: 1. Measurement = Reading Level + Correct Factor.
2. If Peak Result complies with AV limit, AV Result is deemed to comply with AV limit.
3. Test setup: RBW: 1 MHz, VBW: 3 MHz, Sweep time: auto.
4. Peak: Peak detector.
5. For below 3GHz part, filter losses were only considered in the spurious frequency bands and the authorized band was not corrected for Band Reject Filter losses.
6. Only the worst case emission was recorded, if it complies with the limit, the other emissions deemed to comply with the limit.



Test Mode	Channel	Polarization	Verdict
11G	2462 MHz	Vertical	PASS



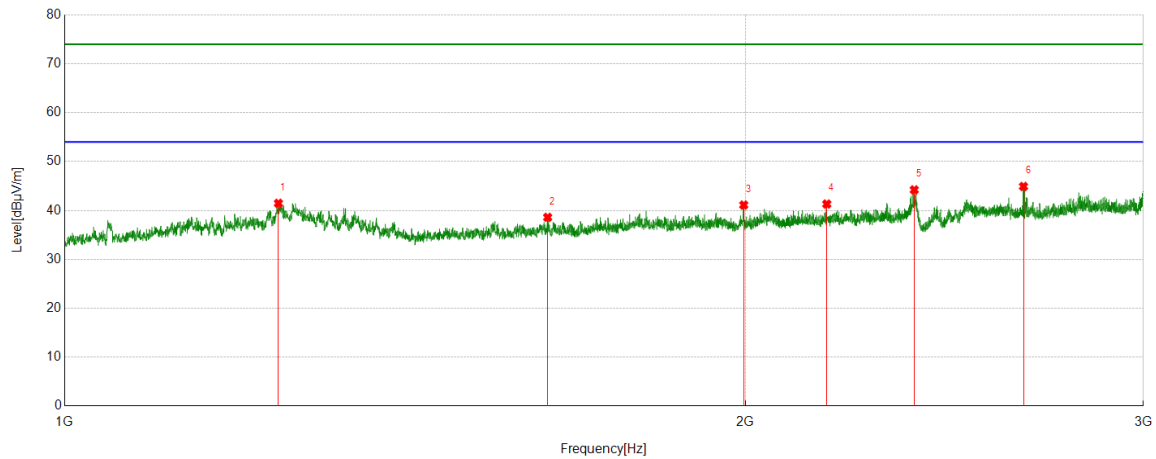
PK Result:

No.	Frequency	Reading Level	Correct Factor	Result	Limit	Margin	Remark
	[MHz]	[dBuV/m]	[dB]	[dBuV/m]	[dBuV/m]	[dB]	
1	1077.7544	45.71	-5.41	40.30	74.00	-33.70	Vertical
2	1329.1791	47.75	-5.67	42.08	74.00	-31.92	Vertical
3	1661.0977	44.17	-4.90	39.27	74.00	-34.73	Vertical
4	1995.6577	43.17	-3.04	40.13	74.00	-33.87	Vertical
5	2376.5224	44.26	-1.10	43.16	74.00	-30.84	Vertical
6	2843.1978	44.15	0.13	44.28	74.00	-29.72	Vertical

- Note: 1. Measurement = Reading Level + Correct Factor.
2. If Peak Result complies with AV limit, AV Result is deemed to comply with AV limit.
3. Test setup: RBW: 1 MHz, VBW: 3 MHz, Sweep time: auto.
4. Peak: Peak detector.
5. For below 3GHz part, filter losses were only considered in the spurious frequency bands and the authorized band was not corrected for Band Reject Filter losses.
6. Only the worst case emission was recorded, if it complies with the limit, the other emissions deemed to comply with the limit.



Test Mode	Channel	Polarization	Verdict
11N HT20	2412 MHz	Horizontal	PASS



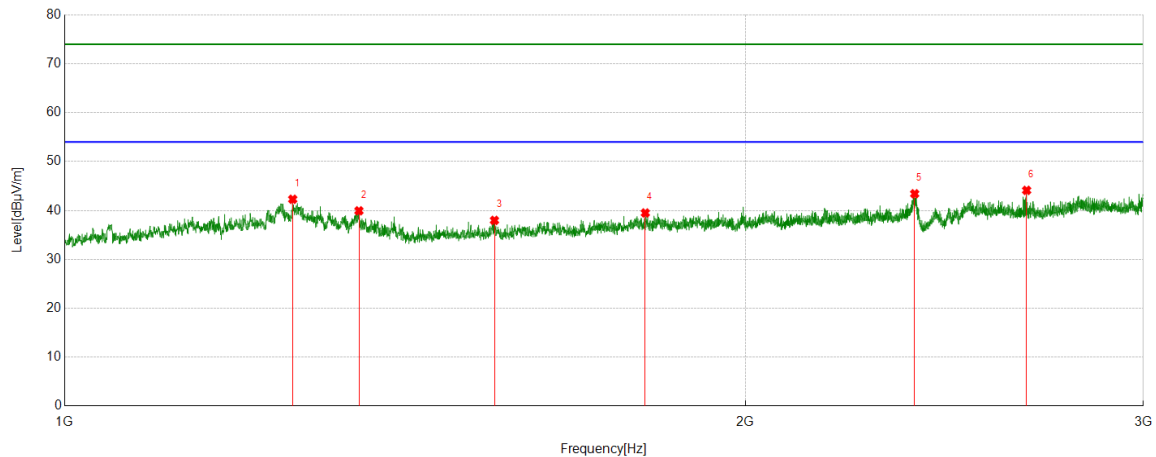
PK Result:

No.	Frequency	Reading Level	Correct Factor	Result	Limit	Margin	Remark
	[MHz]	[dBuV/m]	[dB]	[dBuV/m]	[dBuV/m]	[dB]	
1	1243.2513	47.06	-5.60	41.46	74.00	-32.54	Horizontal
2	1635.5625	43.66	-5.07	38.59	74.00	-35.41	Horizontal
3	1997.1596	44.14	-3.02	41.12	74.00	-32.88	Horizontal
4	2173.2496	43.63	-2.32	41.31	74.00	-32.69	Horizontal
5	2375.7497	45.31	-1.10	44.21	74.00	-29.79	Horizontal
6	2655.2507	45.64	-0.73	44.91	74.00	-29.09	Horizontal

- Note: 1. Measurement = Reading Level + Correct Factor.
2. If Peak Result complies with AV limit, AV Result is deemed to comply with AV limit.
3. Test setup: RBW: 1 MHz, VBW: 3 MHz, Sweep time: auto.
4. Peak: Peak detector.
5. For below 3GHz part, filter losses were only considered in the spurious frequency bands and the authorized band was not corrected for Band Reject Filter losses.
6. Only the worst case emission was recorded, if it complies with the limit, the other emissions deemed to comply with the limit.



Test Mode	Channel	Polarization	Verdict
11N HT20	2412 MHz	Vertical	PASS



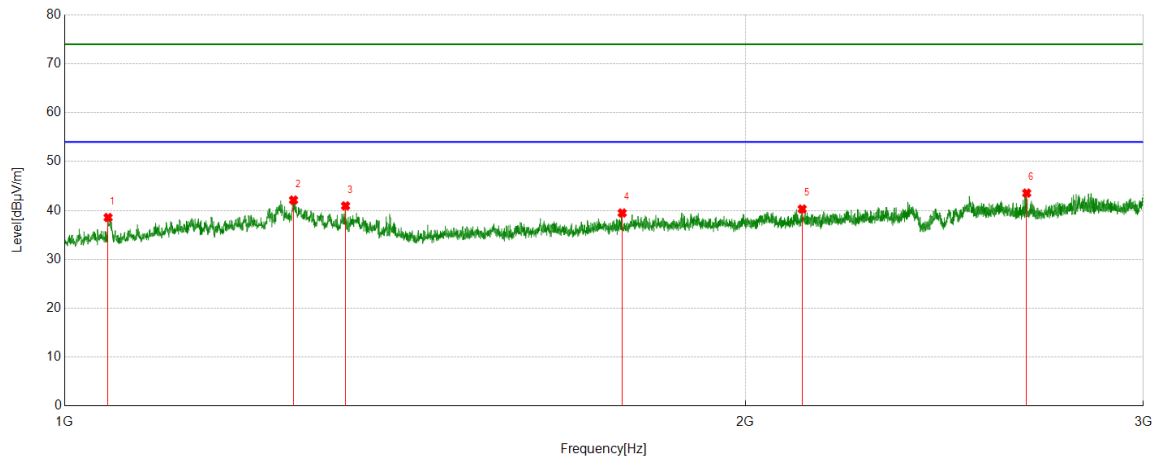
PK Result:

No.	Frequency	Reading Level	Correct Factor	Result	Limit	Margin	Remark
	[MHz]	[dBuV/m]	[dB]	[dBuV/m]	[dBuV/m]	[dB]	
1	1261.5496	47.95	-5.66	42.29	74.00	-31.71	Vertical
2	1349.4397	45.28	-5.35	39.93	74.00	-34.07	Vertical
3	1549.2596	43.40	-5.43	37.97	74.00	-36.03	Vertical
4	1806.5291	43.49	-4.00	39.49	74.00	-34.51	Vertical
5	2376.7489	44.51	-1.10	43.41	74.00	-30.59	Vertical
6	2663.7439	44.80	-0.69	44.11	74.00	-29.89	Vertical

- Note: 1. Measurement = Reading Level + Correct Factor.
2. If Peak Result complies with AV limit, AV Result is deemed to comply with AV limit.
3. Test setup: RBW: 1 MHz, VBW: 3 MHz, Sweep time: auto.
4. Peak: Peak detector.
5. For below 3GHz part, filter losses were only considered in the spurious frequency bands and the authorized band was not corrected for Band Reject Filter losses.
6. Only the worst case emission was recorded, if it complies with the limit, the other emissions deemed to comply with the limit.



Test Mode	Channel	Polarization	Verdict
11N HT20	2427 MHz	Horizontal	PASS



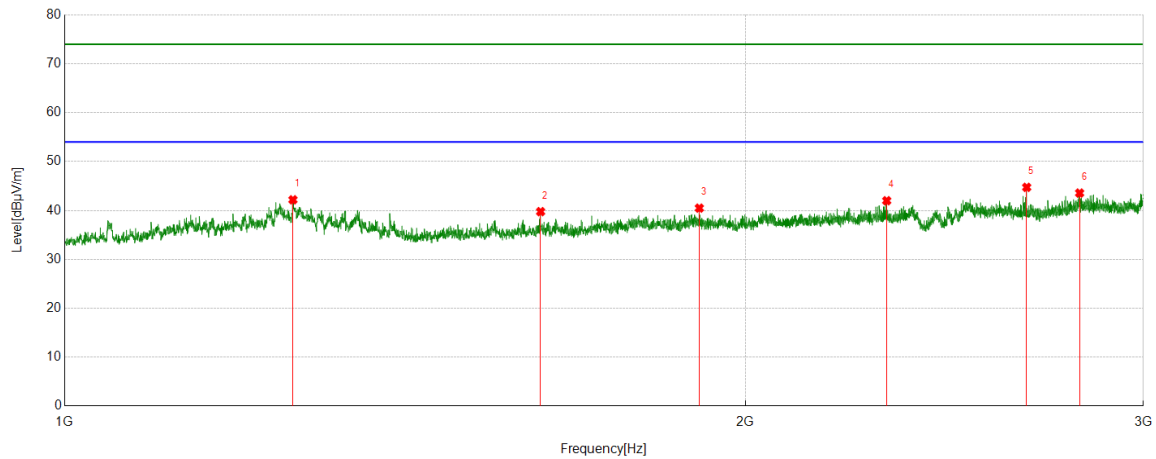
PK Result:

No.	Frequency	Reading Level	Correct Factor	Result	Limit	Margin	Remark
	[MHz]	[dBuV/m]	[dB]	[dBuV/m]	[dBuV/m]	[dB]	
1	1045.2429	44.07	-5.52	38.55	74.00	-35.45	Horizontal
2	1262.5105	47.75	-5.63	42.12	74.00	-31.88	Horizontal
3	1331.2299	46.62	-5.68	40.94	74.00	-33.06	Horizontal
4	1764.4638	43.59	-4.11	39.48	74.00	-34.52	Horizontal
5	2119.5171	42.70	-2.41	40.29	74.00	-33.71	Horizontal
6	2664.4372	44.25	-0.70	43.55	74.00	-30.45	Horizontal

- Note: 1. Measurement = Reading Level + Correct Factor.
2. If Peak Result complies with AV limit, AV Result is deemed to comply with AV limit.
3. Test setup: RBW: 1 MHz, VBW: 3 MHz, Sweep time: auto.
4. Peak: Peak detector.
5. For below 3GHz part, filter losses were only considered in the spurious frequency bands and the authorized band was not corrected for Band Reject Filter losses.
6. Only the worst case emission was recorded, if it complies with the limit, the other emissions deemed to comply with the limit.



Test Mode	Channel	Polarization	Verdict
11N HT20	2427 MHz	Vertical	PASS



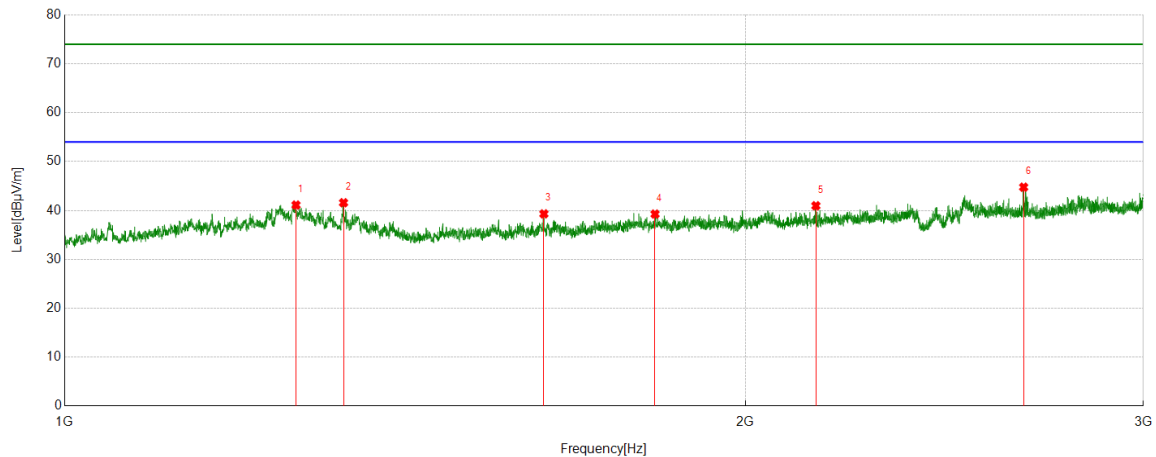
PK Result:

No.	Frequency	Reading Level	Correct Factor	Result	Limit	Margin	Remark
	[MHz]	[dBuV/m]	[dB]	[dBuV/m]	[dBuV/m]	[dB]	
1	1261.7703	47.84	-5.66	42.18	74.00	-31.82	Vertical
2	1623.6825	44.79	-5.03	39.76	74.00	-34.24	Vertical
3	1908.74914	43.79	-3.31	40.48	74.00	-33.52	Vertical
4	2310.1615	43.64	-1.65	41.99	74.00	-32.01	Vertical
5	2664.1715	45.43	-0.70	44.73	74.00	-29.27	Vertical
6	2811.5374	43.78	-0.22	43.56	74.00	-30.44	Vertical

- Note: 1. Measurement = Reading Level + Correct Factor.
2. If Peak Result complies with AV limit, AV Result is deemed to comply with AV limit.
3. Test setup: RBW: 1 MHz, VBW: 3 MHz, Sweep time: auto.
4. Peak: Peak detector.
5. For below 3GHz part, filter losses were only considered in the spurious frequency bands and the authorized band was not corrected for Band Reject Filter losses.
6. Only the worst case emission was recorded, if it complies with the limit, the other emissions deemed to comply with the limit.



Test Mode	Channel	Polarization	Verdict
11N HT20	2437 MHz	Horizontal	PASS



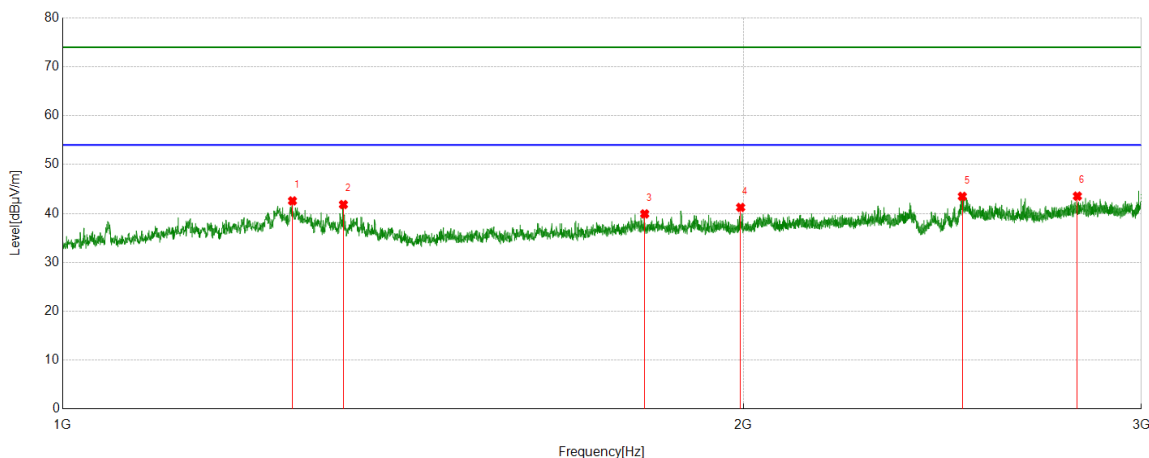
PK Result:

No.	Frequency	Reading Level	Correct Factor	Result	Limit	Margin	Remark
	[MHz]	[dBuV/m]	[dB]	[dBuV/m]	[dBuV/m]	[dB]	
1	1265.7524	46.65	-5.54	41.11	74.00	-32.89	Horizontal
2	1328.4665	47.25	-5.67	41.58	74.00	-32.42	Horizontal
3	1629.2517	44.37	-5.07	39.30	74.00	-34.70	Horizontal
4	1824.5246	43.04	-3.78	39.26	74.00	-34.74	Horizontal
5	2149.2524	43.32	-2.36	40.96	74.00	-33.04	Horizontal
6	2655.7508	45.48	-0.72	44.76	74.00	-29.24	Horizontal

- Note: 1. Measurement = Reading Level + Correct Factor.
2. If Peak Result complies with AV limit, AV Result is deemed to comply with AV limit.
3. Test setup: RBW: 1 MHz, VBW: 3 MHz, Sweep time: auto.
4. Peak: Peak detector.
5. For below 3GHz part, filter losses were only considered in the spurious frequency bands and the authorized band was not corrected for Band Reject Filter losses.
6. Only the worst case emission was recorded, if it complies with the limit, the other emissions deemed to comply with the limit.



Test Mode	Channel	Polarization	Verdict
11N HT20	2437 MHz	Vertical	PASS



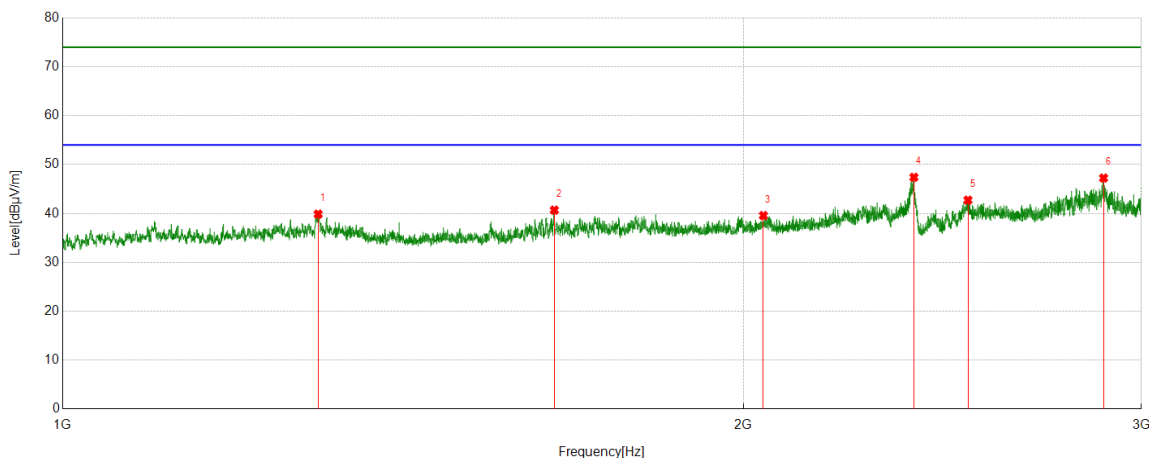
PK Result:

No.	Frequency	Reading Level	Correct Factor	Result	Limit	Margin	Remark
	[MHz]	[dBuV/m]	[dB]	[dBuV/m]	[dBuV/m]	[dB]	
1	1263.7365	48.17	-5.60	42.57	74.00	-31.43	Vertical
2	1331.0775	47.50	-5.68	41.82	74.00	-32.18	Vertical
3	1809.1913	43.97	-4.06	39.91	74.00	-34.09	Vertical
4	1994.7464	44.27	-3.04	41.23	74.00	-32.77	Vertical
5	2500.4186	43.94	-0.45	43.49	74.00	-30.51	Vertical
6	2810.7536	43.77	-0.23	43.54	74.00	-30.46	Vertical

- Note: 1. Measurement = Reading Level + Correct Factor.
2. If Peak Result complies with AV limit, AV Result is deemed to comply with AV limit.
3. Test setup: RBW: 1 MHz, VBW: 3 MHz, Sweep time: auto.
4. Peak: Peak detector.
5. For below 3GHz part, filter losses were only considered in the spurious frequency bands and the authorized band was not corrected for Band Reject Filter losses.
6. Only the worst case emission was recorded, if it complies with the limit, the other emissions deemed to comply with the limit.



Test Mode	Channel	Polarization	Verdict
11N HT20	2447 MHz	Horizontal	PASS



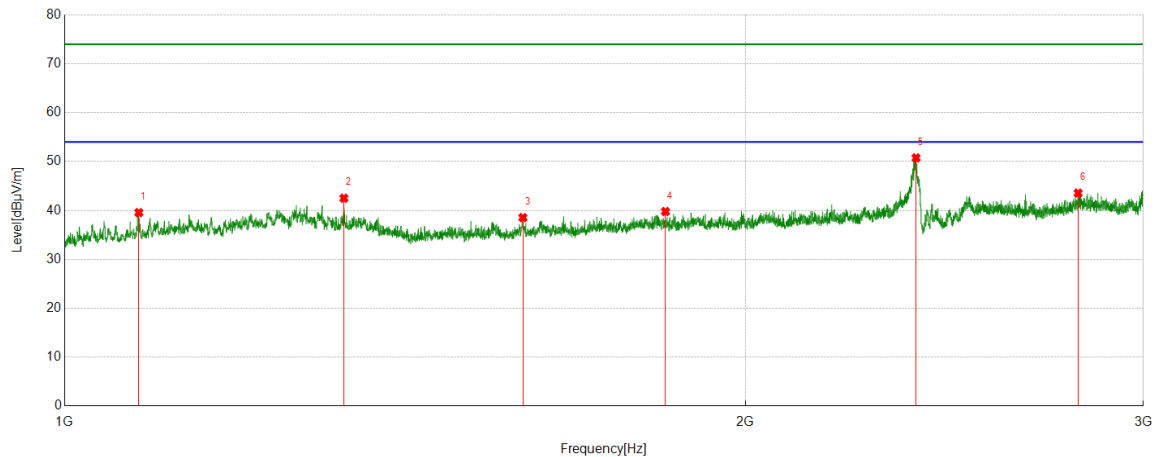
PK Result:

No.	Frequency	Reading Level	Correct Factor	Result	Limit	Margin	Remark
	[MHz]	[dBuV/m]	[dB]	[dBuV/m]	[dBuV/m]	[dB]	
1	1297.2549	45.67	-5.81	39.86	74.00	-34.14	Horizontal
2	1650.1915	45.65	-4.97	40.68	74.00	-33.32	Horizontal
3	2041.5824	41.96	-2.39	39.57	74.00	-34.43	Horizontal
4	2379.7490	48.48	-1.08	47.40	74.00	-26.60	Horizontal
5	2514.6247	43.08	-0.36	42.72	74.00	-31.28	Horizontal
6	2886.7579	46.77	0.47	47.24	74.00	-26.76	Horizontal

- Note: 1. Measurement = Reading Level + Correct Factor.
2. If Peak Result complies with AV limit, AV Result is deemed to comply with AV limit.
3. Test setup: RBW: 1 MHz, VBW: 3 MHz, Sweep time: auto.
4. Peak: Peak detector.
5. For below 3GHz part, filter losses were only considered in the spurious frequency bands and the authorized band was not corrected for Band Reject Filter losses.
6. Only the worst case emission was recorded, if it complies with the limit, the other emissions deemed to comply with the limit.



Test Mode	Channel	Polarization	Verdict
11N HT20	2447 MHz	Vertical	PASS



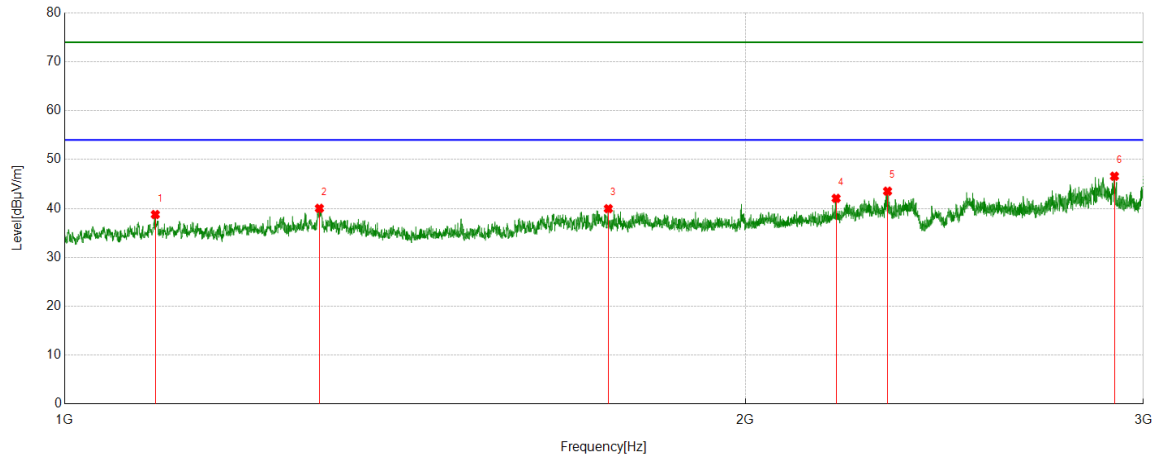
PK Result:

No.	Frequency	Reading Level	Correct Factor	Result	Limit	Margin	Remark
	[MHz]	[dBuV/m]	[dB]	[dBuV/m]	[dBuV/m]	[dB]	
1	1078.5250	44.98	-5.42	39.56	74.00	-34.44	Vertical
2	1329.1291	48.17	-5.67	42.50	74.00	-31.50	Vertical
3	1594.7482	43.60	-5.06	38.54	74.00	-35.46	Vertical
4	1844.0917	43.49	-3.71	39.78	74.00	-34.22	Vertical
5	2380.0981	51.83	-1.08	50.75	74.00	-23.25	Vertical
6	2807.2516	43.79	-0.24	43.55	74.00	-30.45	Vertical

- Note: 1. Measurement = Reading Level + Correct Factor.
2. If Peak Result complies with AV limit, AV Result is deemed to comply with AV limit.
3. Test setup: RBW: 1 MHz, VBW: 3 MHz, Sweep time: auto.
4. Peak: Peak detector.
5. For below 3GHz part, filter losses were only considered in the spurious frequency bands and the authorized band was not corrected for Band Reject Filter losses.
6. Only the worst case emission was recorded, if it complies with the limit, the other emissions deemed to comply with the limit.



Test Mode	Channel	Polarization	Verdict
11N HT20	2462 MHz	Horizontal	PASS



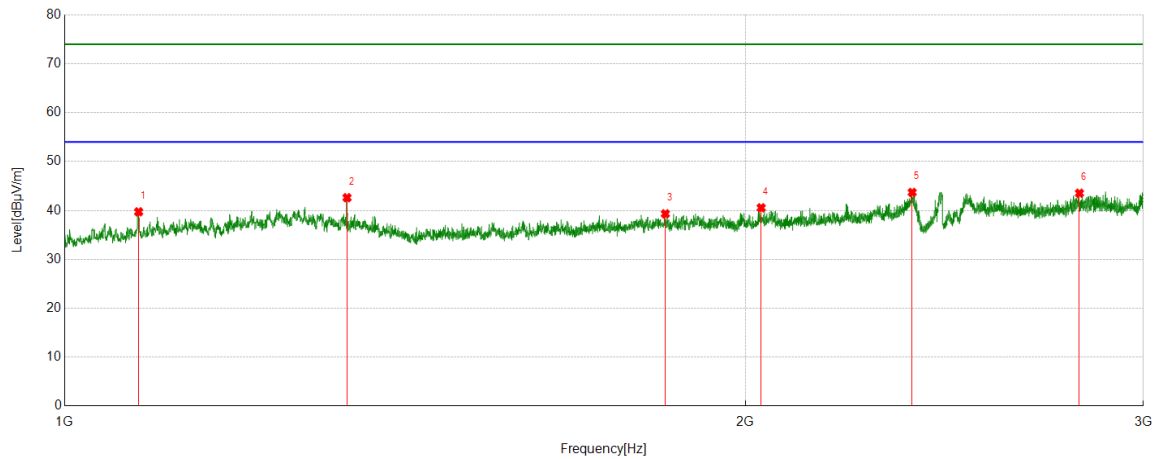
PK Result:

No.	Frequency	Reading Level	Correct Factor	Result	Limit	Margin	Remark
	[MHz]	[dBuV/m]	[dB]	[dBuV/m]	[dBuV/m]	[dB]	
1	1096.7916	44.34	-5.58	38.76	74.00	-35.24	Horizontal
2	1296.2492	45.82	-5.80	40.02	74.00	-33.98	Horizontal
3	1739.7230	44.46	-4.50	39.96	74.00	-34.04	Horizontal
4	2194.0995	44.39	-2.33	42.06	74.00	-31.94	Horizontal
5	2312.0577	45.18	-1.65	43.53	74.00	-30.47	Horizontal
6	2913.1409	46.09	0.50	46.59	74.00	-27.41	Horizontal

- Note: 1. Measurement = Reading Level + Correct Factor.
2. If Peak Result complies with AV limit, AV Result is deemed to comply with AV limit.
3. Test setup: RBW: 1 MHz, VBW: 3 MHz, Sweep time: auto.
4. Peak: Peak detector.
5. For below 3GHz part, filter losses were only considered in the spurious frequency bands and the authorized band was not corrected for Band Reject Filter losses.
6. Only the worst case emission was recorded, if it complies with the limit, the other emissions deemed to comply with the limit.



Test Mode	Channel	Polarization	Verdict
11N HT20	2462 MHz	Vertical	PASS



PK Result:

No.	Frequency	Reading Level	Correct Factor	Result	Limit	Margin	Remark
	[MHz]	[dBuV/m]	[dB]	[dBuV/m]	[dBuV/m]	[dB]	
1	1078.2529	45.13	-5.41	39.72	74.00	-34.28	Vertical
2	1333.2525	48.28	-5.67	42.61	74.00	-31.39	Vertical
3	1843.7912	43.03	-3.71	39.32	74.00	-34.68	Vertical
4	2032. 8236	43.19	-2.64	40.55	74.00	-33.45	Vertical
5	2370.7380	44.82	-1.13	43.69	74.00	-30.31	Vertical
6	2811.0492	43.76	-0.23	43.53	74.00	-30.47	Vertical

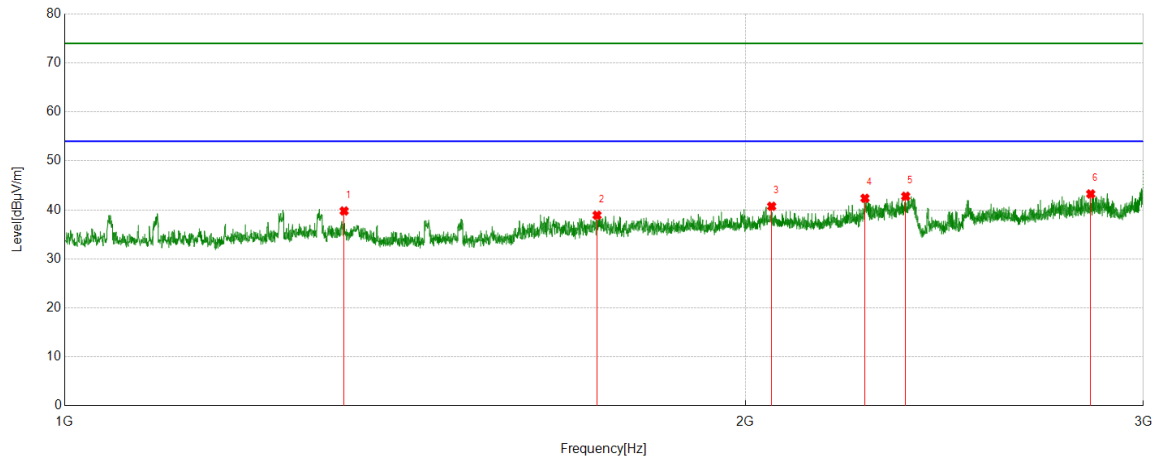
- Note: 1. Measurement = Reading Level + Correct Factor.
2. If Peak Result complies with AV limit, AV Result is deemed to comply with AV limit.
3. Test setup: RBW: 1 MHz, VBW: 3 MHz, Sweep time: auto.
4. Peak: Peak detector.
5. For below 3GHz part, filter losses were only considered in the spurious frequency bands and the authorized band was not corrected for Band Reject Filter losses.
6. Only the worst case emission was recorded, if it complies with the limit, the other emissions deemed to comply with the limit.



Antenna Type 1: PCB Antenna

HARMONICS AND SPURIOUS EMISSIONS

Test Mode	Channel	Polarization	Verdict
11B	2412 MHz	Horizontal	PASS



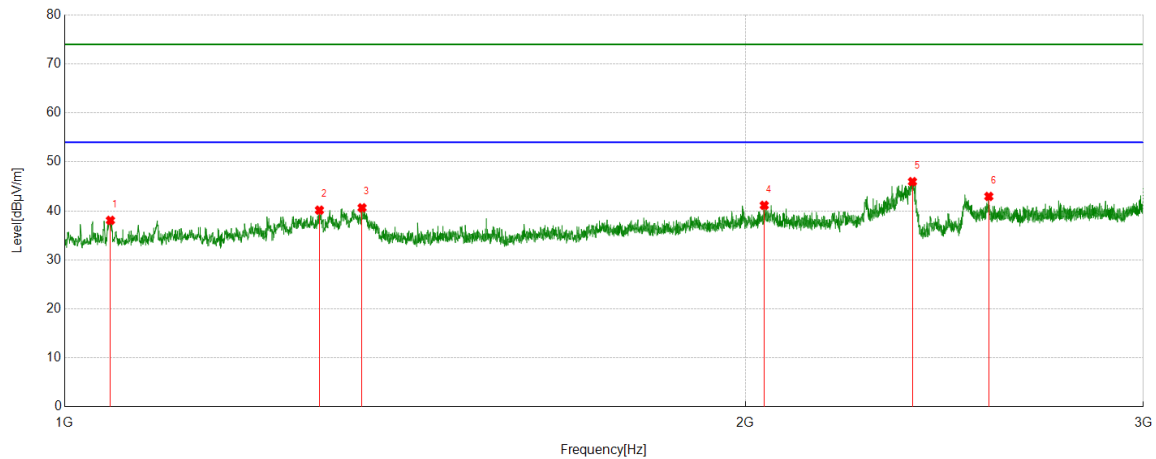
PK Result:

No.	Frequency [MHz]	Reading Level [dBuV/m]	Correct Factor [dB]	Result [dBuV/m]	Limit [dBuV/m]	Margin [dB]	Remark
1	1329.2912	46.19	-6.41	39.78	74.00	-34.22	Horizontal
2	1719.8400	43.91	-5.00	38.91	74.00	-35.09	Horizontal
3	2054.6318	43.40	-2.67	40.73	74.00	-33.27	Horizontal
4	2259.4074	45.59	-3.22	42.37	74.00	-31.63	Horizontal
5	2355.1694	45.69	-2.91	42.78	74.00	-31.22	Horizontal
6	2843.4804	44.42	-1.17	43.25	74.00	-30.75	Horizontal

- Note: 1. Measurement = Reading Level + Correct Factor.
2. If Peak Result complies with AV limit, AV Result is deemed to comply with AV limit.
3. Test setup: RBW: 1 MHz, VBW: 3 MHz, Sweep time: auto.
4. Peak: Peak detector.
5. For below 3GHz part, filter losses were only considered in the spurious frequency bands and the authorized band was not corrected for Band Reject Filter losses.
6. Only the worst case emission was recorded, if it complies with the limit, the other emissions deemed to comply with the limit.



Test Mode	Channel	Polarization	Verdict
11B	2412 MHz	Vertical	PASS



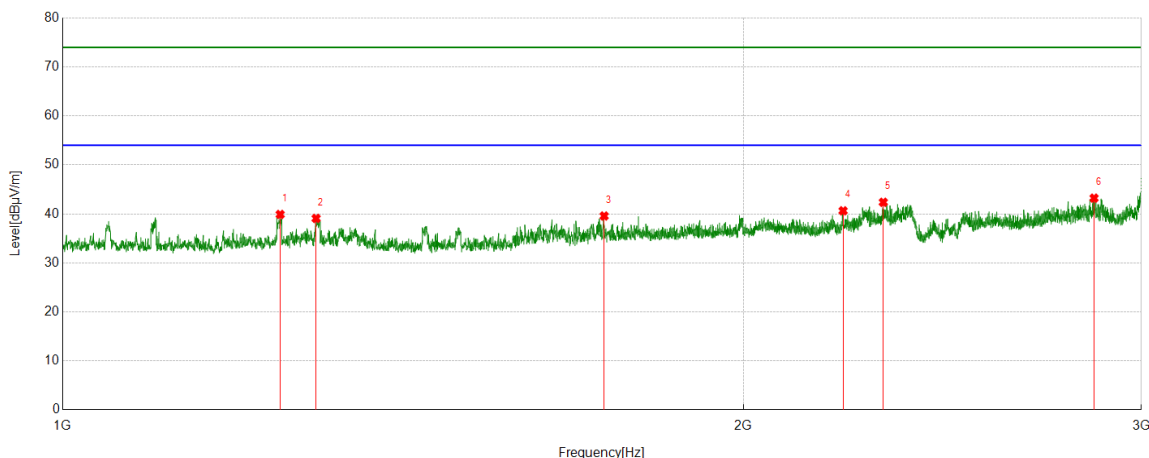
PK Result:

No.	Frequency	Reading Level	Correct Factor	Result	Limit	Margin	Remark
	[MHz]	[dBuV/m]	[dB]	[dBuV/m]	[dBuV/m]	[dB]	
1	1047.756	43.70	-5.63	38.07	74.00	-35.93	Vertical
2	1296.287	46.39	-6.24	40.15	74.00	-33.85	Vertical
3	1353.7942	47.01	-6.38	40.63	74.00	-33.37	Vertical
4	2039.1299	43.63	-2.50	41.13	74.00	-32.87	Vertical
5	2371.4214	48.45	-2.48	45.97	74.00	-28.03	Vertical
6	2563.1954	45.19	-2.24	42.95	74.00	-31.05	Vertical

- Note: 1. Measurement = Reading Level + Correct Factor.
2. If Peak Result complies with AV limit, AV Result is deemed to comply with AV limit.
3. Test setup: RBW: 1 MHz, VBW: 3 MHz, Sweep time: auto.
4. Peak: Peak detector.
5. For below 3GHz part, filter losses were only considered in the spurious frequency bands and the authorized band was not corrected for Band Reject Filter losses.
6. Only the worst case emission was recorded, if it complies with the limit, the other emissions deemed to comply with the limit.



Test Mode	Channel	Polarization	Verdict
11B	2417 MHz	Horizontal	PASS



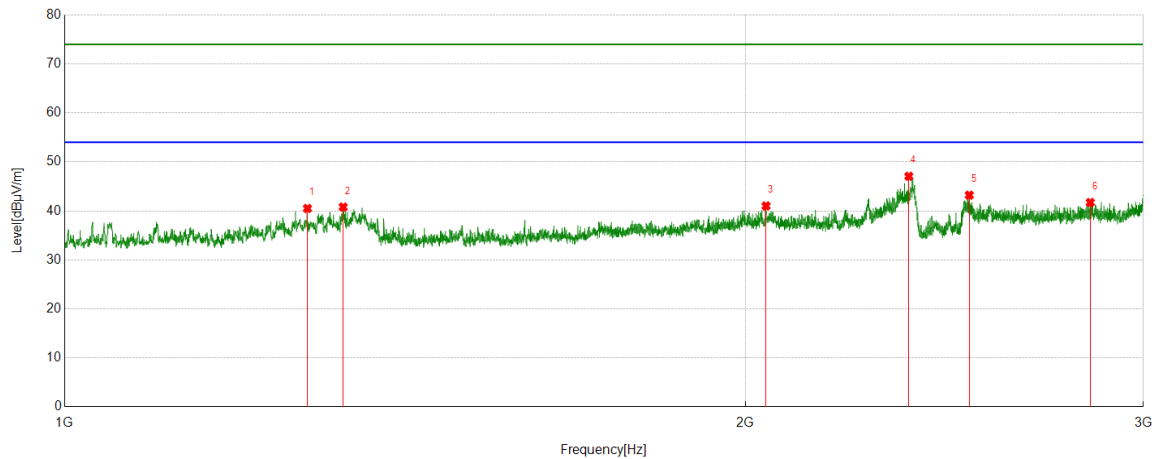
PK Result:

No.	Frequency	Reading Level	Correct Factor	Result	Limit	Margin	Remark
	[MHz]	[dBuV/m]	[dB]	[dBuV/m]	[dBuV/m]	[dB]	
1	1248.031	46.07	-6.18	39.89	74.00	-34.11	Horizontal
2	1294.5368	45.37	-6.29	39.08	74.00	-34.92	Horizontal
3	1735.842	44.34	-4.77	39.57	74.00	-34.43	Horizontal
4	2214.1518	43.93	-3.30	40.63	74.00	-33.37	Horizontal
5	2306.6633	45.40	-3.03	42.37	74.00	-31.63	Horizontal
6	2858.9824	44.34	-1.12	43.22	74.00	-30.78	Horizontal

- Note: 1. Measurement = Reading Level + Correct Factor.
2. If Peak Result complies with AV limit, AV Result is deemed to comply with AV limit.
3. Test setup: RBW: 1 MHz, VBW: 3 MHz, Sweep time: auto.
4. Peak: Peak detector.
5. For below 3GHz part, filter losses were only considered in the spurious frequency bands and the authorized band was not corrected for Band Reject Filter losses.
6. Only the worst case emission was recorded, if it complies with the limit, the other emissions deemed to comply with the limit.



Test Mode	Channel	Polarization	Verdict
11B	2417 MHz	Vertical	PASS



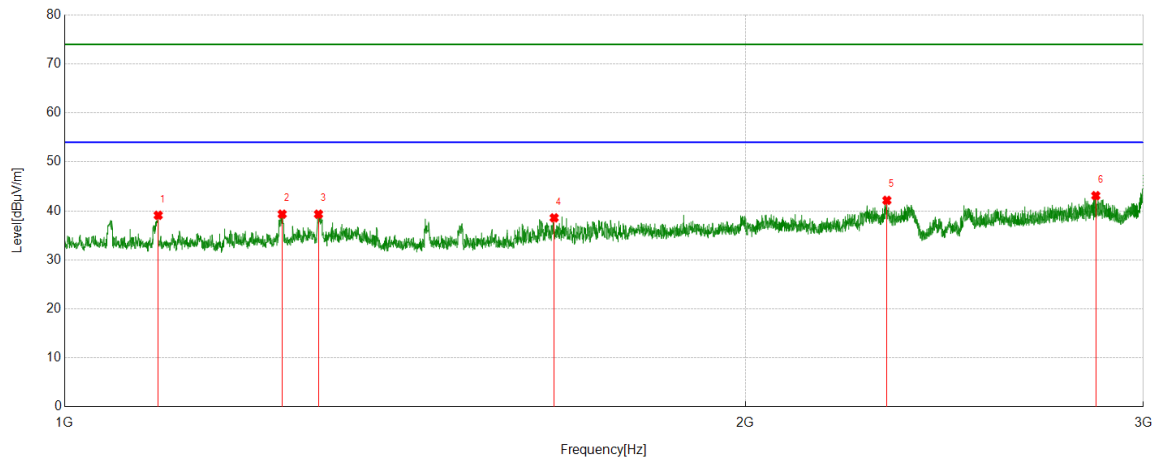
PK Result:

No.	Frequency	Reading Level	Correct Factor	Result	Limit	Margin	Remark
	[MHz]	[dBuV/m]	[dB]	[dBuV/m]	[dBuV/m]	[dB]	
1	1280.5351	46.86	-6.36	40.50	74.00	-33.50	Vertical
2	1328.041	47.20	-6.41	40.79	74.00	-33.21	Vertical
3	2042.8804	43.50	-2.49	41.01	74.00	-32.99	Vertical
4	2362.6703	49.74	-2.67	47.07	74.00	-26.93	Vertical
5	2512.6891	45.12	-1.91	43.21	74.00	-30.79	Vertical
6	2842.2303	42.89	-1.17	41.72	74.00	-32.28	Vertical

- Note: 1. Measurement = Reading Level + Correct Factor.
2. If Peak Result complies with AV limit, AV Result is deemed to comply with AV limit.
3. Test setup: RBW: 1 MHz, VBW: 3 MHz, Sweep time: auto.
4. Peak: Peak detector.
5. For below 3GHz part, filter losses were only considered in the spurious frequency bands and the authorized band was not corrected for Band Reject Filter losses.
6. Only the worst case emission was recorded, if it complies with the limit, the other emissions deemed to comply with the limit.



Test Mode	Channel	Polarization	Verdict
11B	2437 MHz	Horizontal	PASS



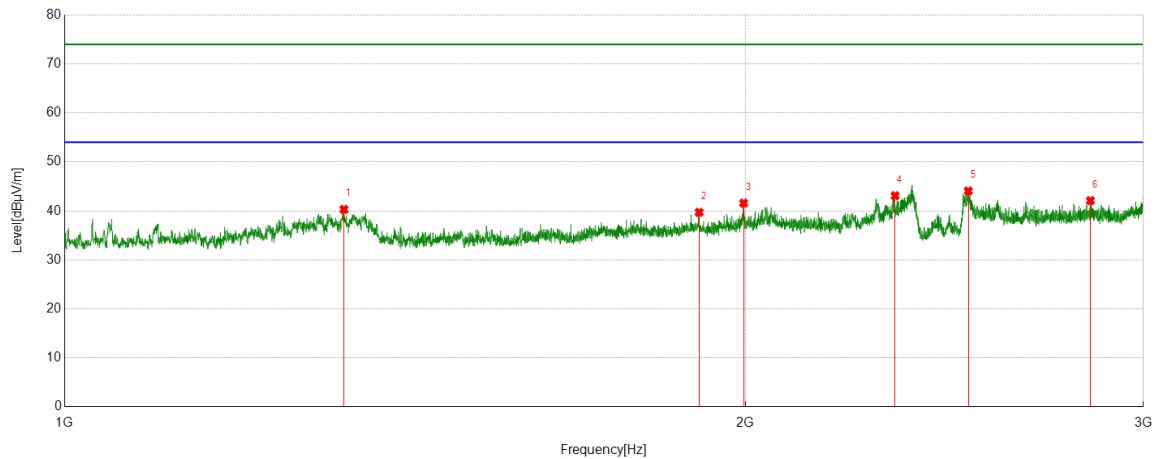
PK Result:

No.	Frequency	Reading Level	Correct Factor	Result	Limit	Margin	Remark
	[MHz]	[dBuV/m]	[dB]	[dBuV/m]	[dBuV/m]	[dB]	
1	1100.0125	45.26	-6.16	39.10	74.00	-34.90	Horizontal
2	1248.031	45.52	-6.18	39.34	74.00	-34.66	Horizontal
3	1295.0369	45.61	-6.28	39.33	74.00	-34.67	Horizontal
4	1646.3308	43.76	-5.18	38.58	74.00	-35.42	Horizontal
5	2310.4138	45.15	-3.00	42.15	74.00	-31.85	Horizontal
6	2858.2323	44.24	-1.13	43.11	74.00	-30.89	Horizontal

- Note: 1. Measurement = Reading Level + Correct Factor.
2. If Peak Result complies with AV limit, AV Result is deemed to comply with AV limit.
3. Test setup: RBW: 1 MHz, VBW: 3 MHz, Sweep time: auto.
4. Peak: Peak detector.
5. For below 3GHz part, filter losses were only considered in the spurious frequency bands and the authorized band was not corrected for Band Reject Filter losses.
6. Only the worst case emission was recorded, if it complies with the limit, the other emissions deemed to comply with the limit.



Test Mode	Channel	Polarization	Verdict
11B	2437 MHz	Vertical	PASS



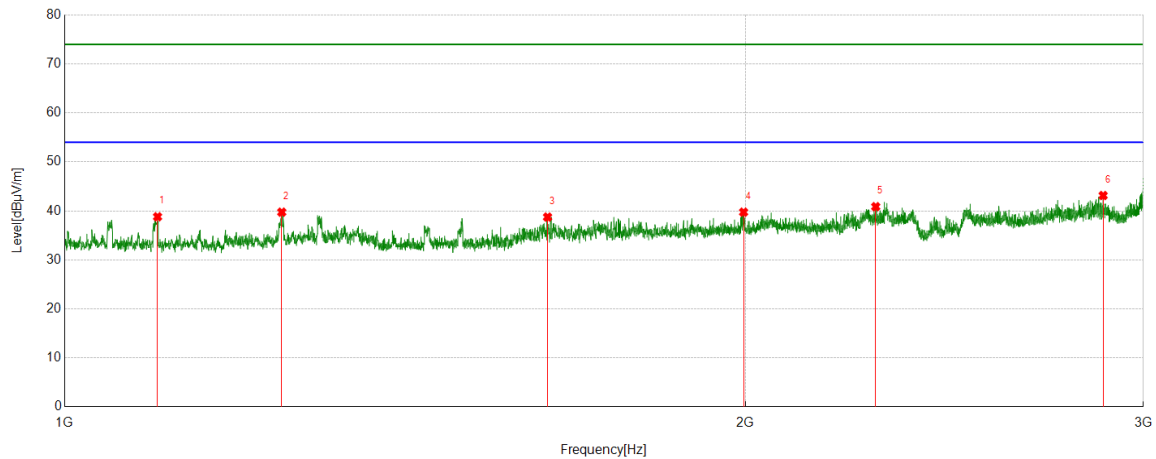
PK Result:

No.	Frequency	Reading Level	Correct Factor	Result	Limit	Margin	Remark
	[MHz]	[dBuV/m]	[dB]	[dBuV/m]	[dBuV/m]	[dB]	
1	1329.0411	46.71	-6.41	40.30	74.00	-33.70	Vertical
2	1908.3635	43.34	-3.63	39.71	74.00	-34.29	Vertical
3	1996.8746	44.68	-3.09	41.59	74.00	-32.41	Vertical
4	2329.9162	46.24	-3.14	43.10	74.00	-30.90	Vertical
5	2510.1888	46.03	-1.97	44.06	74.00	-29.94	Vertical
6	2842.4803	43.27	-1.17	42.10	74.00	-31.90	Vertical

- Note: 1. Measurement = Reading Level + Correct Factor.
2. If Peak Result complies with AV limit, AV Result is deemed to comply with AV limit.
3. Test setup: RBW: 1 MHz, VBW: 3 MHz, Sweep time: auto.
4. Peak: Peak detector.
5. For below 3GHz part, filter losses were only considered in the spurious frequency bands and the authorized band was not corrected for Band Reject Filter losses.
6. Only the worst case emission was recorded, if it complies with the limit, the other emissions deemed to comply with the limit.



Test Mode	Channel	Polarization	Verdict
11B	2457 MHz	Horizontal	PASS



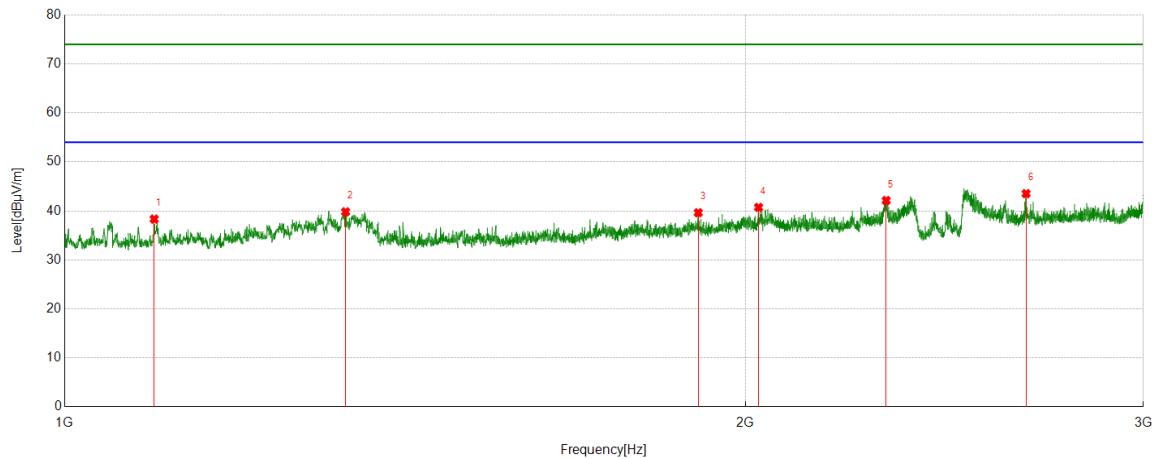
PK Result:

No.	Frequency	Reading Level	Correct Factor	Result	Limit	Margin	Remark
	[MHz]	[dBuV/m]	[dB]	[dBuV/m]	[dBuV/m]	[dB]	
1	1099.2624	44.96	-6.16	38.80	74.00	-35.20	Horizontal
2	1247.5309	45.94	-6.20	39.74	74.00	-34.26	Horizontal
3	1635.3294	44.10	-5.36	38.74	74.00	-35.26	Horizontal
4	1996.6246	42.84	-3.10	39.74	74.00	-34.26	Horizontal
5	2284.4106	44.04	-3.18	40.86	74.00	-33.14	Horizontal
6	2879.735	44.20	-1.06	43.14	74.00	-30.86	Horizontal

- Note: 1. Measurement = Reading Level + Correct Factor.
2. If Peak Result complies with AV limit, AV Result is deemed to comply with AV limit.
3. Test setup: RBW: 1 MHz, VBW: 3 MHz, Sweep time: auto.
4. Peak: Peak detector.
5. For below 3GHz part, filter losses were only considered in the spurious frequency bands and the authorized band was not corrected for Band Reject Filter losses.
6. Only the worst case emission was recorded, if it complies with the limit, the other emissions deemed to comply with the limit.



Test Mode	Channel	Polarization	Verdict
11B	2457 MHz	Vertical	PASS



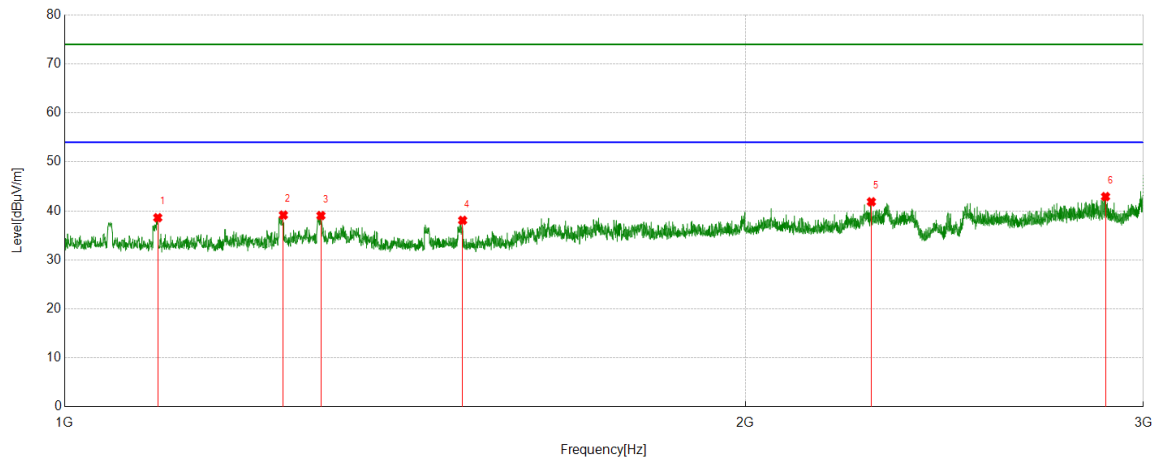
PK Result:

No.	Frequency	Reading Level	Correct Factor	Result	Limit	Margin	Remark
	[MHz]	[dBuV/m]	[dB]	[dBuV/m]	[dBuV/m]	[dB]	
1	1095.5119	44.48	-6.15	38.33	74.00	-35.67	Vertical
2	1331.2914	46.23	-6.42	39.81	74.00	-34.19	Vertical
3	1906.6133	43.29	-3.66	39.63	74.00	-34.37	Vertical
4	2027.3784	43.57	-2.85	40.72	74.00	-33.28	Vertical
5	2308.9136	45.13	-3.01	42.12	74.00	-31.88	Vertical
6	2662.4578	45.36	-1.83	43.53	74.00	-30.47	Vertical

- Note: 1. Measurement = Reading Level + Correct Factor.
2. If Peak Result complies with AV limit, AV Result is deemed to comply with AV limit.
3. Test setup: RBW: 1 MHz, VBW: 3 MHz, Sweep time: auto.
4. Peak: Peak detector.
5. For below 3GHz part, filter losses were only considered in the spurious frequency bands and the authorized band was not corrected for Band Reject Filter losses.
6. Only the worst case emission was recorded, if it complies with the limit, the other emissions deemed to comply with the limit.



Test Mode	Channel	Polarization	Verdict
11B	2462 MHz	Horizontal	PASS



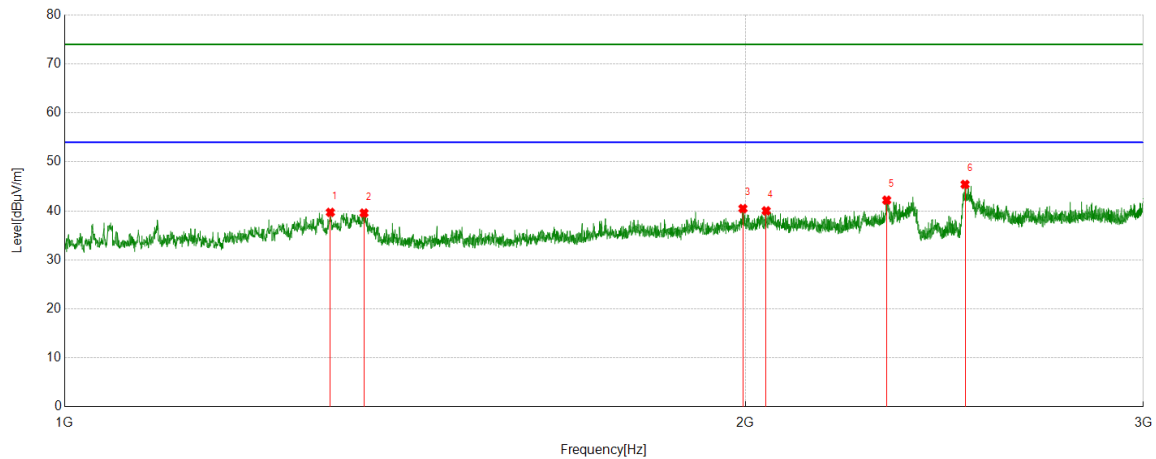
PK Result:

No.	Frequency	Reading Level	Correct Factor	Result	Limit	Margin	Remark
	[MHz]	[dBuV/m]	[dB]	[dBuV/m]	[dBuV/m]	[dB]	
1	1099.5124	44.77	-6.16	38.61	74.00	-35.39	Horizontal
2	1249.5312	45.30	-6.15	39.15	74.00	-34.85	Horizontal
3	1298.2873	45.23	-6.19	39.04	74.00	-34.96	Horizontal
4	1499.8125	44.73	-6.66	38.07	74.00	-35.93	Horizontal
5	2274.1593	45.08	-3.23	41.85	74.00	-32.15	Horizontal
6	2886.7358	43.73	-0.82	42.91	74.00	-31.09	Horizontal

- Note: 1. Measurement = Reading Level + Correct Factor.
2. If Peak Result complies with AV limit, AV Result is deemed to comply with AV limit.
3. Test setup: RBW: 1 MHz, VBW: 3 MHz, Sweep time: auto.
4. Peak: Peak detector.
5. For below 3GHz part, filter losses were only considered in the spurious frequency bands and the authorized band was not corrected for Band Reject Filter losses.
6. Only the worst case emission was recorded, if it complies with the limit, the other emissions deemed to comply with the limit.



Test Mode	Channel	Polarization	Verdict
11B	2462 MHz	Vertical	PASS



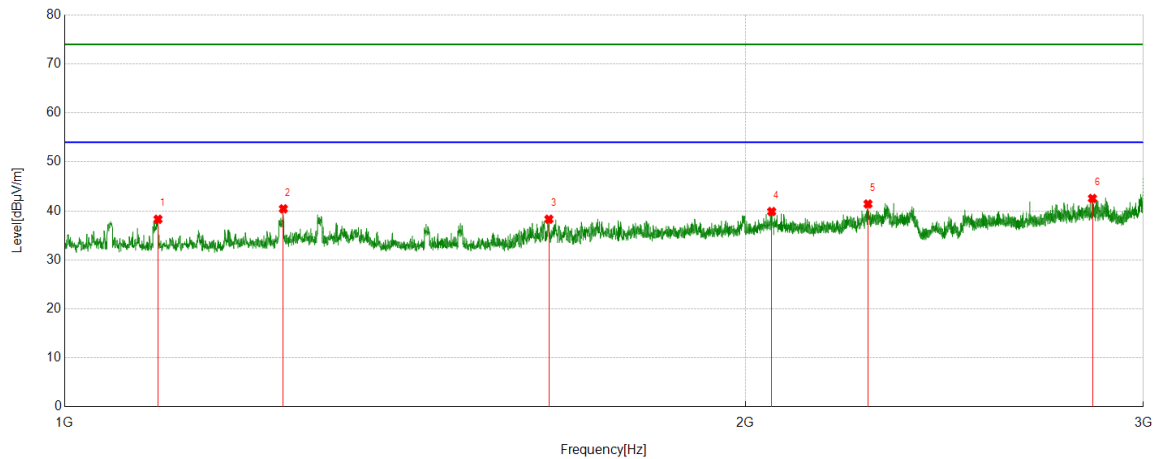
PK Result:

No.	Frequency	Reading Level	Correct Factor	Result	Limit	Margin	Remark
	[MHz]	[dBuV/m]	[dB]	[dBuV/m]	[dBuV/m]	[dB]	
1	1310.7888	46.13	-6.43	39.70	74.00	-34.30	Vertical
2	1356.5446	45.95	-6.38	39.57	74.00	-34.43	Vertical
3	1995.3744	43.59	-3.12	40.47	74.00	-33.53	Vertical
4	2043.1304	42.50	-2.49	40.01	74.00	-33.99	Vertical
5	2309.9137	45.20	-3.01	42.19	74.00	-31.81	Vertical
6	2501.9377	47.42	-2.01	45.41	74.00	-28.59	Vertical

- Note: 1. Measurement = Reading Level + Correct Factor.
2. If Peak Result complies with AV limit, AV Result is deemed to comply with AV limit.
3. Test setup: RBW: 1 MHz, VBW: 3 MHz, Sweep time: auto.
4. Peak: Peak detector.
5. For below 3GHz part, filter losses were only considered in the spurious frequency bands and the authorized band was not corrected for Band Reject Filter losses.
6. Only the worst case emission was recorded, if it complies with the limit, the other emissions deemed to comply with the limit.



Test Mode	Channel	Polarization	Verdict
11G	2412 MHz	Horizontal	PASS



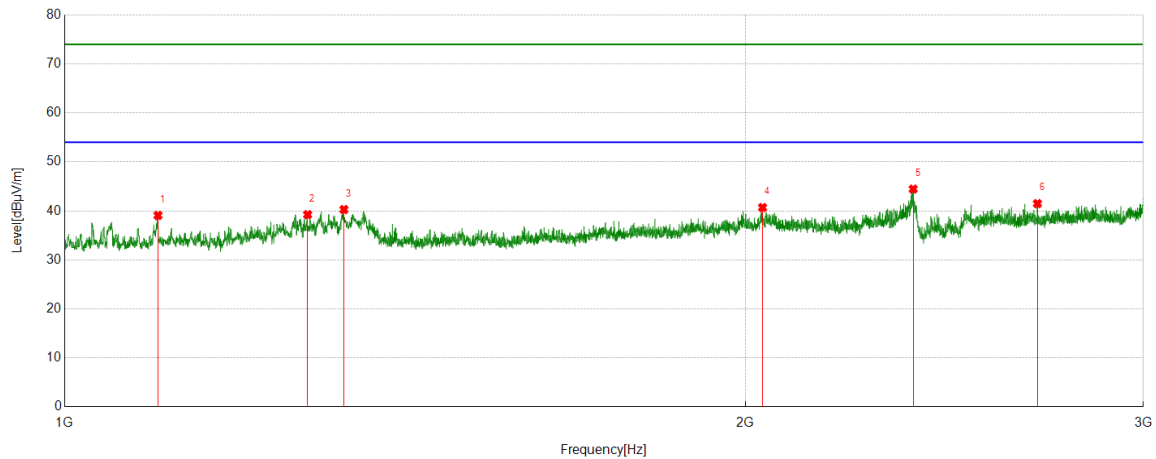
PK Result:

No.	Frequency	Reading Level	Correct Factor	Result	Limit	Margin	Remark
	[MHz]	[dBuV/m]	[dB]	[dBuV/m]	[dBuV/m]	[dB]	
1	1099.7625	44.45	-6.16	38.29	74.00	-35.71	Horizontal
2	1249.5312	46.57	-6.15	40.42	74.00	-33.58	Horizontal
3	1637.5797	43.65	-5.35	38.30	74.00	-35.70	Horizontal
4	2054.6318	42.53	-2.67	39.86	74.00	-34.14	Horizontal
5	2266.4083	44.64	-3.23	41.41	74.00	-32.59	Horizontal
6	2848.4811	43.71	-1.17	42.54	74.00	-31.46	Horizontal

- Note: 1. Measurement = Reading Level + Correct Factor.
2. If Peak Result complies with AV limit, AV Result is deemed to comply with AV limit.
3. Test setup: RBW: 1 MHz, VBW: 3 MHz, Sweep time: auto.
4. Peak: Peak detector.
5. For below 3GHz part, filter losses were only considered in the spurious frequency bands and the authorized band was not corrected for Band Reject Filter losses.
6. Only the worst case emission was recorded, if it complies with the limit, the other emissions deemed to comply with the limit.



Test Mode	Channel	Polarization	Verdict
11G	2412 MHz	Vertical	PASS



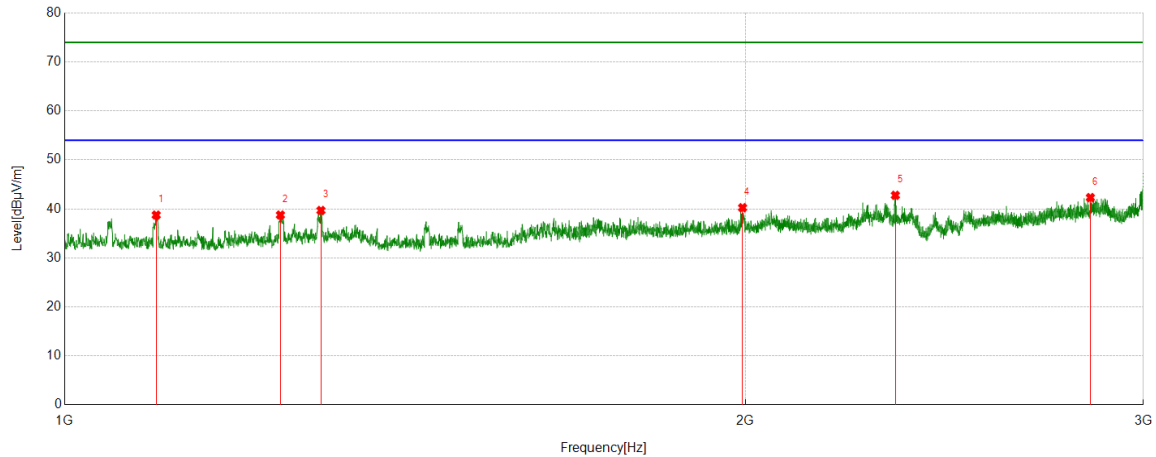
PK Result:

No.	Frequency	Reading Level	Correct Factor	Result	Limit	Margin	Remark
	[MHz]	[dBuV/m]	[dB]	[dBuV/m]	[dBuV/m]	[dB]	
1	1099.7625	45.24	-6.16	39.08	74.00	-34.92	Vertical
2	1280.7851	45.60	-6.37	39.23	74.00	-34.77	Vertical
3	1329.0411	46.69	-6.41	40.28	74.00	-33.72	Vertical
4	2035.6295	43.32	-2.63	40.69	74.00	-33.31	Vertical
5	2373.1716	46.93	-2.48	44.45	74.00	-29.55	Vertical
6	2693.2117	43.03	-1.54	41.49	74.00	-32.51	Vertical

- Note: 1. Measurement = Reading Level + Correct Factor.
2. If Peak Result complies with AV limit, AV Result is deemed to comply with AV limit.
3. Test setup: RBW: 1 MHz, VBW: 3 MHz, Sweep time: auto.
4. Peak: Peak detector.
5. For below 3GHz part, filter losses were only considered in the spurious frequency bands and the authorized band was not corrected for Band Reject Filter losses.
6. Only the worst case emission was recorded, if it complies with the limit, the other emissions deemed to comply with the limit.



Test Mode	Channel	Polarization	Verdict
11G	2427 MHz	Horizontal	PASS



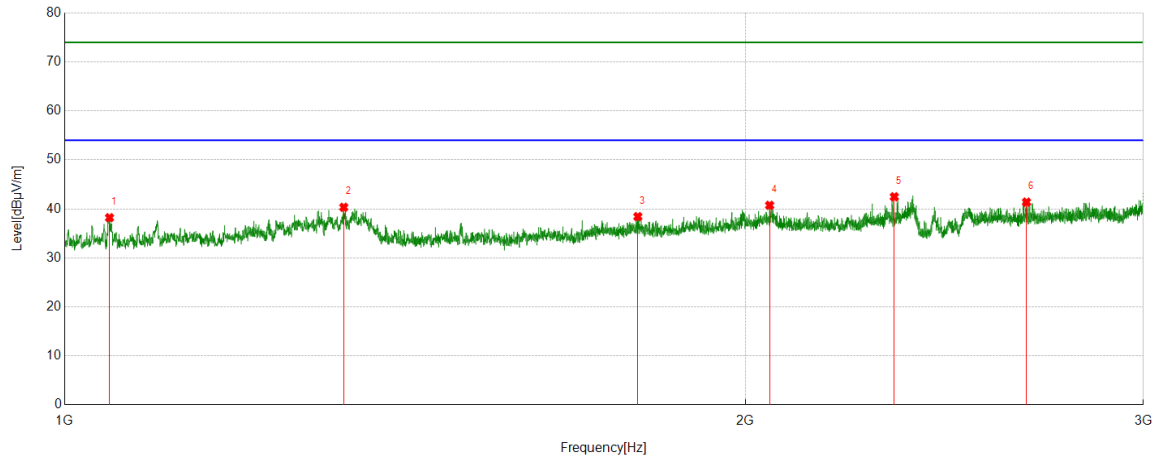
PK Result:

No.	Frequency	Reading Level	Correct Factor	Result	Limit	Margin	Remark
	[MHz]	[dBuV/m]	[dB]	[dBuV/m]	[dBuV/m]	[dB]	
1	1097.7622	44.90	-6.16	38.74	74.00	-35.26	Horizontal
2	1245.7807	44.99	-6.24	38.75	74.00	-35.25	Horizontal
3	1298.2873	45.87	-6.19	39.68	74.00	-34.32	Horizontal
4	1994.6243	43.37	-3.13	40.24	74.00	-33.76	Horizontal
5	2330.4163	45.91	-3.14	42.77	74.00	-31.23	Horizontal
6	2842.4803	43.48	-1.17	42.31	74.00	-31.69	Horizontal

- Note: 1. Measurement = Reading Level + Correct Factor.
2. If Peak Result complies with AV limit, AV Result is deemed to comply with AV limit.
3. Test setup: RBW: 1 MHz, VBW: 3 MHz, Sweep time: auto.
4. Peak: Peak detector.
5. For below 3GHz part, filter losses were only considered in the spurious frequency bands and the authorized band was not corrected for Band Reject Filter losses.
6. Only the worst case emission was recorded, if it complies with the limit, the other emissions deemed to comply with the limit.



Test Mode	Channel	Polarization	Verdict
11G	2427 MHz	Vertical	PASS



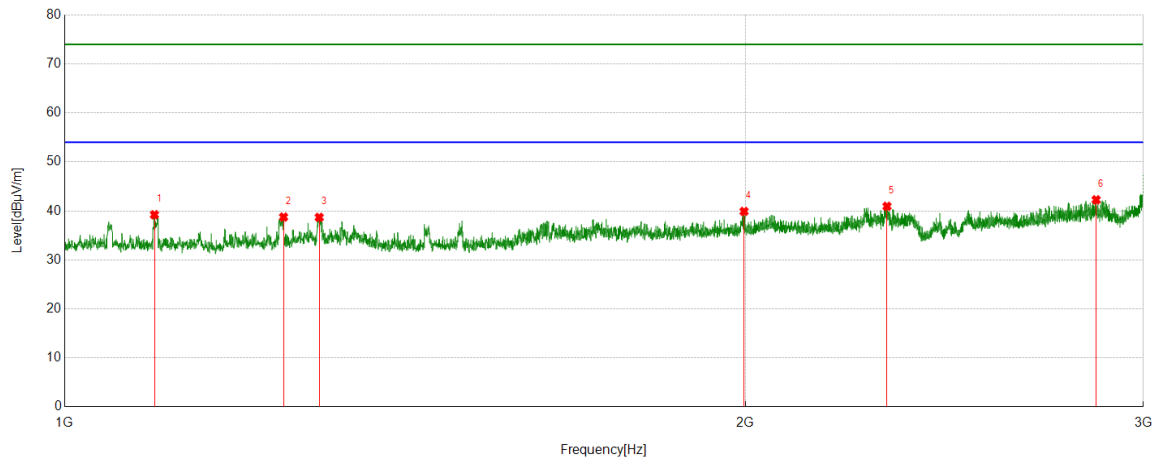
PK Result:

No.	Frequency	Reading Level	Correct Factor	Result	Limit	Margin	Remark
	[MHz]	[dBuV/m]	[dB]	[dBuV/m]	[dBuV/m]	[dB]	
1	1046.7558	43.85	-5.65	38.20	74.00	-35.80	Vertical
2	1328.7911	46.74	-6.41	40.33	74.00	-33.67	Vertical
3	1792.8491	42.74	-4.32	38.42	74.00	-35.58	Vertical
4	2050.3813	43.27	-2.54	40.73	74.00	-33.27	Vertical
5	2327.916	45.57	-3.10	42.47	74.00	-31.53	Vertical
6	2663.4579	43.21	-1.83	41.38	74.00	-32.62	Vertical

- Note: 1. Measurement = Reading Level + Correct Factor.
2. If Peak Result complies with AV limit, AV Result is deemed to comply with AV limit.
3. Test setup: RBW: 1 MHz, VBW: 3 MHz, Sweep time: auto.
4. Peak: Peak detector.
5. For below 3GHz part, filter losses were only considered in the spurious frequency bands and the authorized band was not corrected for Band Reject Filter losses.
6. Only the worst case emission was recorded, if it complies with the limit, the other emissions deemed to comply with the limit.



Test Mode	Channel	Polarization	Verdict
11G	2437 MHz	Horizontal	PASS



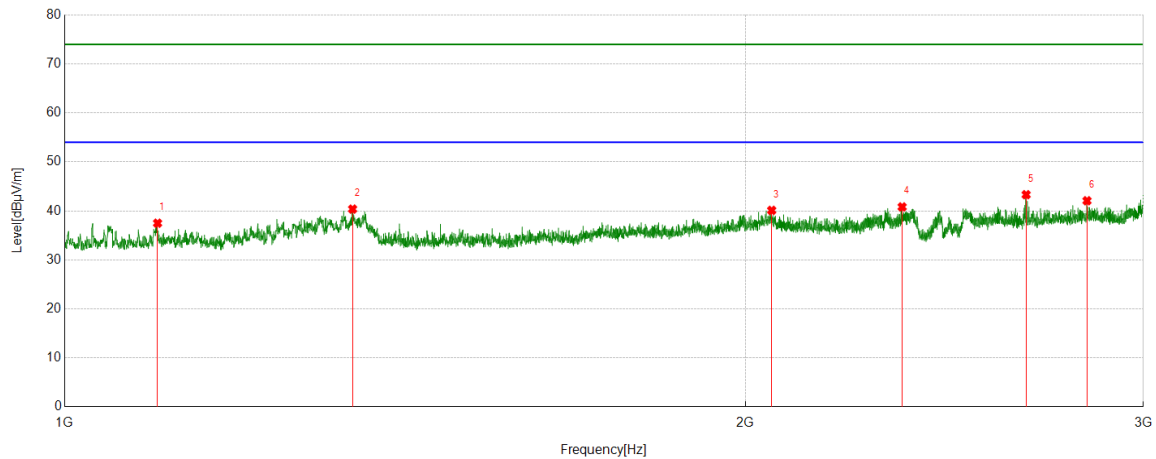
PK Result:

No.	Frequency	Reading Level	Correct Factor	Result	Limit	Margin	Remark
	[MHz]	[dBuV/m]	[dB]	[dBuV/m]	[dBuV/m]	[dB]	
1	1095.762	45.37	-6.15	39.22	74.00	-34.78	Horizontal
2	1249.7812	44.88	-6.14	38.74	74.00	-35.26	Horizontal
3	1296.037	44.93	-6.25	38.68	74.00	-35.32	Horizontal
4	1997.6247	42.97	-3.08	39.89	74.00	-34.11	Horizontal
5	2310.6638	43.93	-3.00	40.93	74.00	-33.07	Horizontal
6	2859.2324	43.38	-1.12	42.26	74.00	-31.74	Horizontal

- Note: 1. Measurement = Reading Level + Correct Factor.
2. If Peak Result complies with AV limit, AV Result is deemed to comply with AV limit.
3. Test setup: RBW: 1 MHz, VBW: 3 MHz, Sweep time: auto.
4. Peak: Peak detector.
5. For below 3GHz part, filter losses were only considered in the spurious frequency bands and the authorized band was not corrected for Band Reject Filter losses.
6. Only the worst case emission was recorded, if it complies with the limit, the other emissions deemed to comply with the limit.



Test Mode	Channel	Polarization	Verdict
11G	2437 MHz	Vertical	PASS



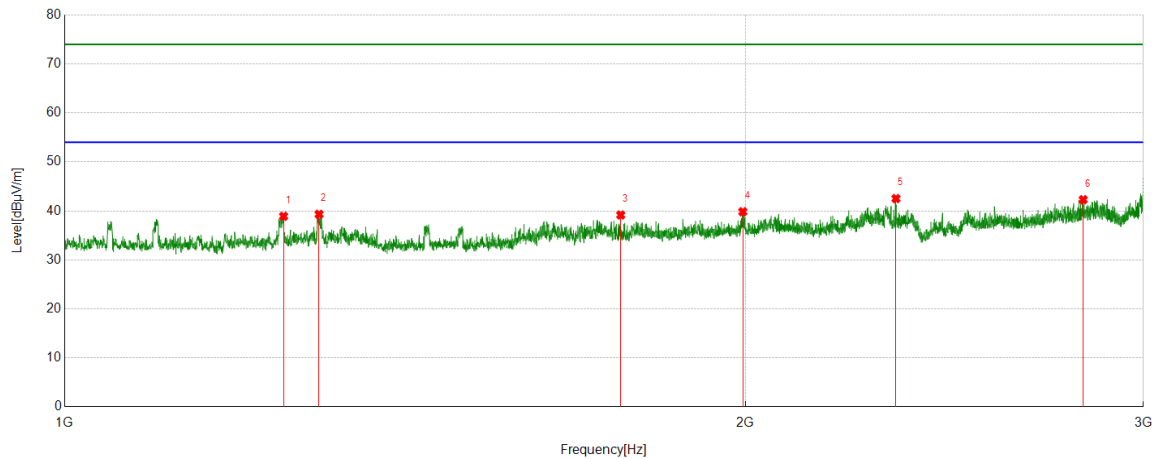
PK Result:

No.	Frequency	Reading Level	Correct Factor	Result	Limit	Margin	Remark
	[MHz]	[dBuV/m]	[dB]	[dBuV/m]	[dBuV/m]	[dB]	
1	1099.2624	43.65	-6.16	37.49	74.00	-36.51	Vertical
2	1340.7926	46.80	-6.43	40.37	74.00	-33.63	Vertical
3	2054.6318	42.78	-2.67	40.11	74.00	-33.89	Vertical
4	2346.6683	43.90	-3.09	40.81	74.00	-33.19	Vertical
5	2662.4578	45.14	-1.83	43.31	74.00	-30.69	Vertical
6	2832.7291	43.41	-1.34	42.07	74.00	-31.93	Vertical

- Note: 1. Measurement = Reading Level + Correct Factor.
2. If Peak Result complies with AV limit, AV Result is deemed to comply with AV limit.
3. Test setup: RBW: 1 MHz, VBW: 3 MHz, Sweep time: auto.
4. Peak: Peak detector.
5. For below 3GHz part, filter losses were only considered in the spurious frequency bands and the authorized band was not corrected for Band Reject Filter losses.
6. Only the worst case emission was recorded, if it complies with the limit, the other emissions deemed to comply with the limit.



Test Mode	Channel	Polarization	Verdict
11G	2447 MHz	Horizontal	PASS



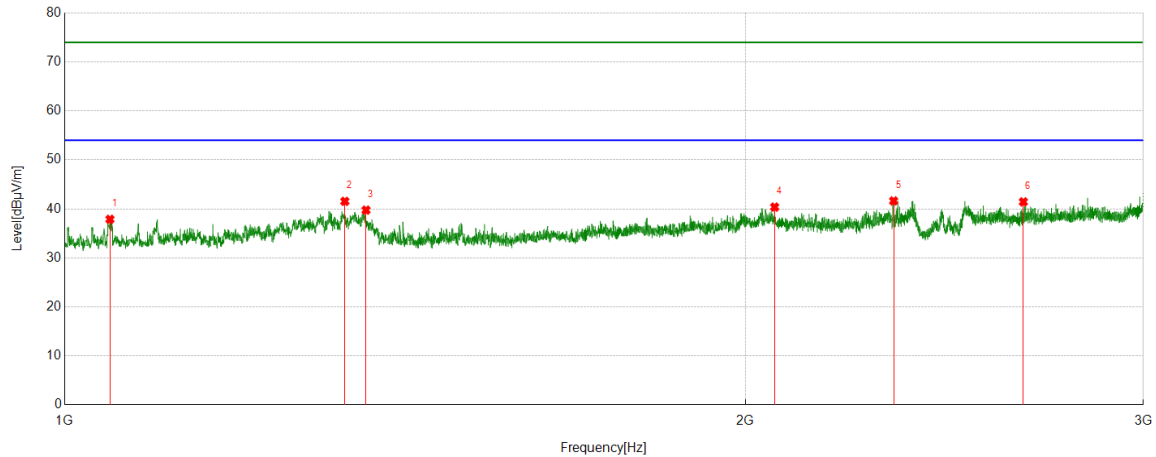
PK Result:

No.	Frequency	Reading Level	Correct Factor	Result	Limit	Margin	Remark
	[MHz]	[dBuV/m]	[dB]	[dBuV/m]	[dBuV/m]	[dB]	
1	1249.7812	45.04	-6.14	38.90	74.00	-35.10	Horizontal
2	1295.787	45.57	-6.26	39.31	74.00	-34.69	Horizontal
3	1761.8452	43.91	-4.75	39.16	74.00	-34.84	Horizontal
4	1995.1244	42.95	-3.12	39.83	74.00	-34.17	Horizontal
5	2331.9165	45.64	-3.13	42.51	74.00	-31.49	Horizontal
6	2821.7277	43.74	-1.45	42.29	74.00	-31.71	Horizontal

- Note: 1. Measurement = Reading Level + Correct Factor.
2. If Peak Result complies with AV limit, AV Result is deemed to comply with AV limit.
3. Test setup: RBW: 1 MHz, VBW: 3 MHz, Sweep time: auto.
4. Peak: Peak detector.
5. For below 3GHz part, filter losses were only considered in the spurious frequency bands and the authorized band was not corrected for Band Reject Filter losses.
6. Only the worst case emission was recorded, if it complies with the limit, the other emissions deemed to comply with the limit.



Test Mode	Channel	Polarization	Verdict
11G	2447 MHz	Vertical	PASS



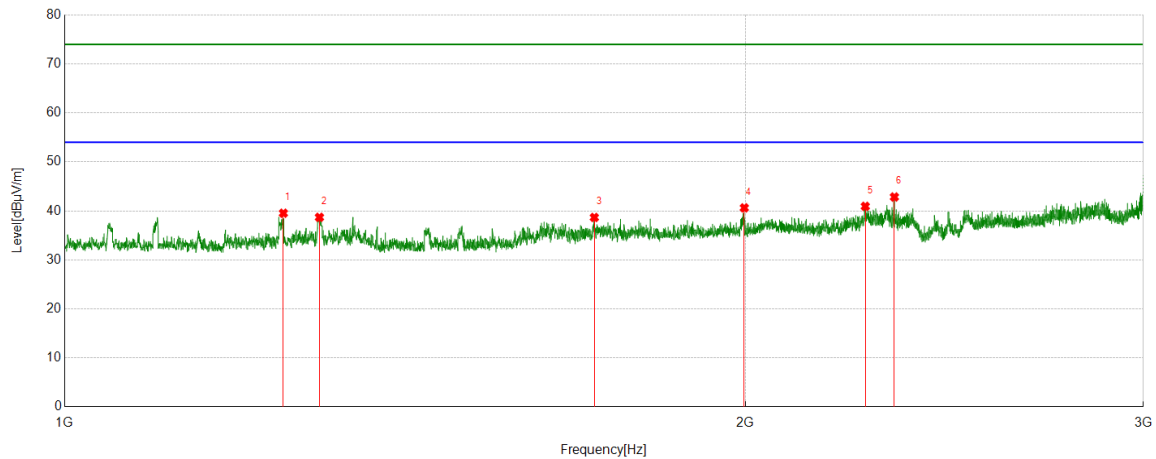
PK Result:

No.	Frequency	Reading Level	Correct Factor	Result	Limit	Margin	Remark
	[MHz]	[dBuV/m]	[dB]	[dBuV/m]	[dBuV/m]	[dB]	
1	1047.2559	43.52	-5.64	37.88	74.00	-36.12	Vertical
2	1330.2913	47.96	-6.42	41.54	74.00	-32.46	Vertical
3	1359.2949	46.14	-6.39	39.75	74.00	-34.25	Vertical
4	2060.8826	43.22	-2.85	40.37	74.00	-33.63	Vertical
5	2326.4158	44.71	-3.08	41.63	74.00	-32.37	Vertical
6	2654.9569	43.31	-1.87	41.44	74.00	-32.56	Vertical

- Note: 1. Measurement = Reading Level + Correct Factor.
2. If Peak Result complies with AV limit, AV Result is deemed to comply with AV limit.
3. Test setup: RBW: 1 MHz, VBW: 3 MHz, Sweep time: auto.
4. Peak: Peak detector.
5. For below 3GHz part, filter losses were only considered in the spurious frequency bands and the authorized band was not corrected for Band Reject Filter losses.
6. Only the worst case emission was recorded, if it complies with the limit, the other emissions deemed to comply with the limit.



Test Mode	Channel	Polarization	Verdict
11G	2462 MHz	Horizontal	PASS



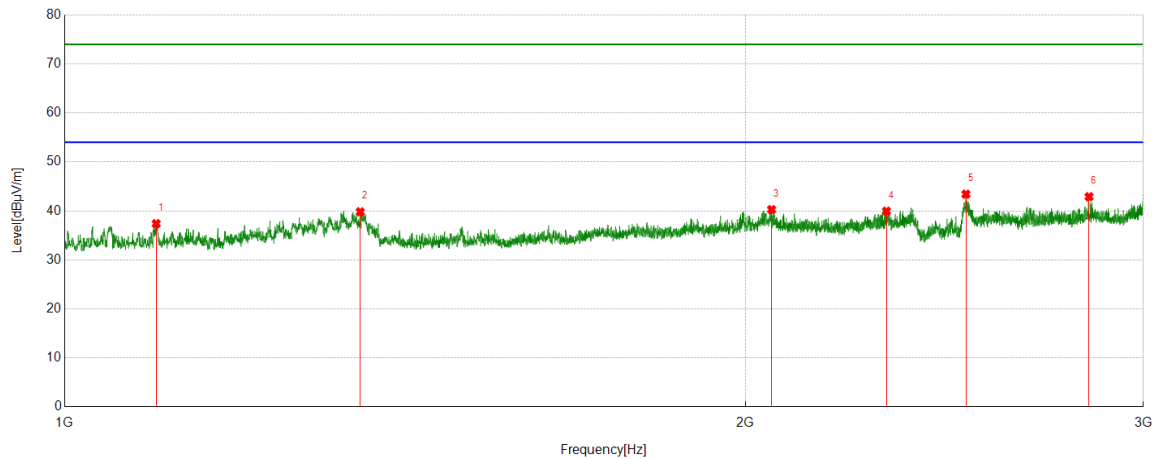
PK Result:

No.	Frequency	Reading Level	Correct Factor	Result	Limit	Margin	Remark
	[MHz]	[dBuV/m]	[dB]	[dBuV/m]	[dBuV/m]	[dB]	
1	1249.5312	45.68	-6.15	39.53	74.00	-34.47	Horizontal
2	1296.287	44.93	-6.24	38.69	74.00	-35.31	Horizontal
3	1715.0894	43.54	-4.88	38.66	74.00	-35.34	Horizontal
4	1998.1248	43.69	-3.07	40.62	74.00	-33.38	Horizontal
5	2260.1575	44.15	-3.22	40.93	74.00	-33.07	Horizontal
6	2328.166	45.95	-3.11	42.84	74.00	-31.16	Horizontal

- Note: 1. Measurement = Reading Level + Correct Factor.
2. If Peak Result complies with AV limit, AV Result is deemed to comply with AV limit.
3. Test setup: RBW: 1 MHz, VBW: 3 MHz, Sweep time: auto.
4. Peak: Peak detector.
5. For below 3GHz part, filter losses were only considered in the spurious frequency bands and the authorized band was not corrected for Band Reject Filter losses.
6. Only the worst case emission was recorded, if it complies with the limit, the other emissions deemed to comply with the limit.



Test Mode	Channel	Polarization	Verdict
11G	2462 MHz	Vertical	PASS



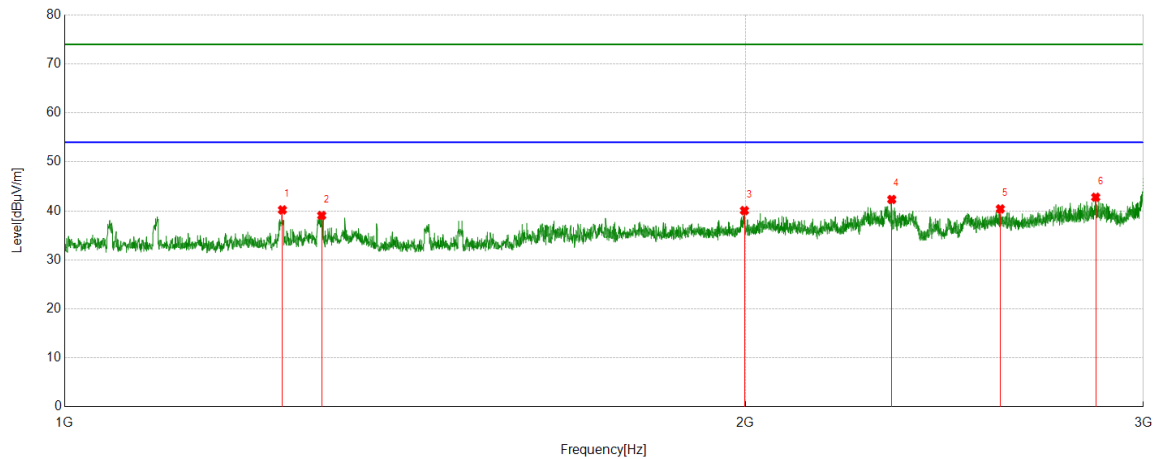
PK Result:

No.	Frequency	Reading Level	Correct Factor	Result	Limit	Margin	Remark
	[MHz]	[dBuV/m]	[dB]	[dBuV/m]	[dBuV/m]	[dB]	
1	1097.7622	43.55	-6.16	37.39	74.00	-36.61	Vertical
2	1351.2939	46.20	-6.38	39.82	74.00	-34.18	Vertical
3	2054.3818	42.92	-2.66	40.26	74.00	-33.74	Vertical
4	2309.4137	42.95	-3.01	39.94	74.00	-34.06	Vertical
5	2504.188	45.41	-2.00	43.41	74.00	-30.59	Vertical
6	2838.7298	44.10	-1.21	42.89	74.00	-31.11	Vertical

- Note: 1. Measurement = Reading Level + Correct Factor.
2. If Peak Result complies with AV limit, AV Result is deemed to comply with AV limit.
3. Test setup: RBW: 1 MHz, VBW: 3 MHz, Sweep time: auto.
4. Peak: Peak detector.
5. For below 3GHz part, filter losses were only considered in the spurious frequency bands and the authorized band was not corrected for Band Reject Filter losses.
6. Only the worst case emission was recorded, if it complies with the limit, the other emissions deemed to comply with the limit.



Test Mode	Channel	Polarization	Verdict
11N HT20	2412 MHz	Horizontal	PASS



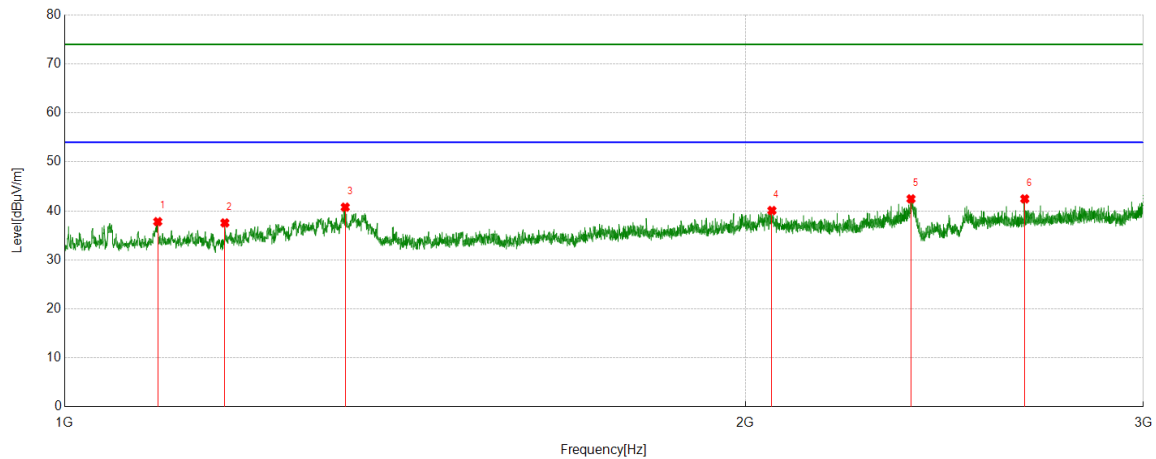
PK Result:

No.	Frequency	Reading Level	Correct Factor	Result	Limit	Margin	Remark
	[MHz]	[dBuV/m]	[dB]	[dBuV/m]	[dBuV/m]	[dB]	
1	1248.281	46.38	-6.18	40.20	74.00	-33.80	Horizontal
2	1299.2874	45.22	-6.16	39.06	74.00	-34.94	Horizontal
3	1998.3748	43.14	-3.07	40.07	74.00	-33.93	Horizontal
4	2321.9152	45.34	-3.01	42.33	74.00	-31.67	Horizontal
5	2593.4492	42.32	-1.92	40.40	74.00	-33.60	Horizontal
6	2857.9822	43.92	-1.13	42.79	74.00	-31.21	Horizontal

- Note: 1. Measurement = Reading Level + Correct Factor.
2. If Peak Result complies with AV limit, AV Result is deemed to comply with AV limit.
3. Test setup: RBW: 1 MHz, VBW: 3 MHz, Sweep time: auto.
4. Peak: Peak detector.
5. For below 3GHz part, filter losses were only considered in the spurious frequency bands and the authorized band was not corrected for Band Reject Filter losses.
6. Only the worst case emission was recorded, if it complies with the limit, the other emissions deemed to comply with the limit.



Test Mode	Channel	Polarization	Verdict
11N HT20	2412 MHz	Vertical	PASS



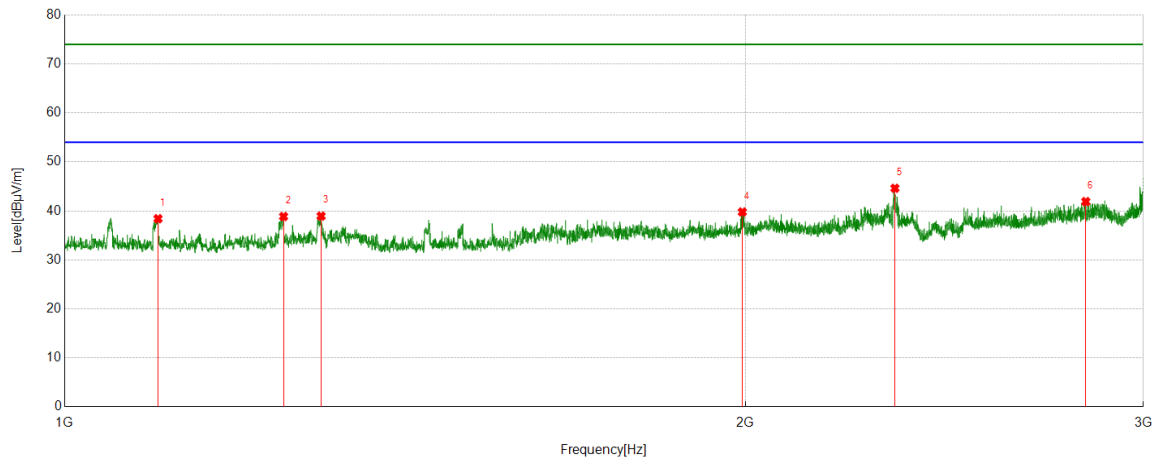
PK Result:

No.	Frequency	Reading Level	Correct Factor	Result	Limit	Margin	Remark
	[MHz]	[dBuV/m]	[dB]	[dBuV/m]	[dBuV/m]	[dB]	
1	1099.5124	43.96	-6.16	37.80	74.00	-36.20	Vertical
2	1177.2722	43.74	-6.19	37.55	74.00	-36.45	Vertical
3	1330.7913	47.18	-6.42	40.76	74.00	-33.24	Vertical
4	2055.1319	42.75	-2.68	40.07	74.00	-33.93	Vertical
5	2367.921	44.98	-2.53	42.45	74.00	-31.55	Vertical
6	2658.7073	44.28	-1.83	42.45	74.00	-31.55	Vertical

- Note: 1. Measurement = Reading Level + Correct Factor.
2. If Peak Result complies with AV limit, AV Result is deemed to comply with AV limit.
3. Test setup: RBW: 1 MHz, VBW: 3 MHz, Sweep time: auto.
4. Peak: Peak detector.
5. For below 3GHz part, filter losses were only considered in the spurious frequency bands and the authorized band was not corrected for Band Reject Filter losses.
6. Only the worst case emission was recorded, if it complies with the limit, the other emissions deemed to comply with the limit.



Test Mode	Channel	Polarization	Verdict
11N HT20	2427 MHz	Horizontal	PASS



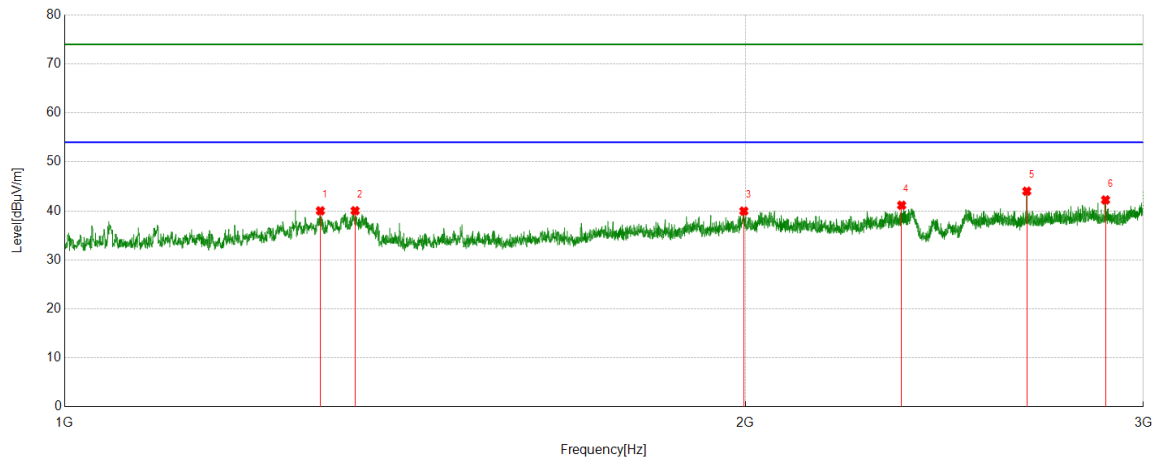
PK Result:

No.	Frequency	Reading Level	Correct Factor	Result	Limit	Margin	Remark
	[MHz]	[dBuV/m]	[dB]	[dBuV/m]	[dBuV/m]	[dB]	
1	1099.7625	44.57	-6.16	38.41	74.00	-35.59	Horizontal
2	1249.7812	45.00	-6.14	38.86	74.00	-35.14	Horizontal
3	1298.5373	45.12	-6.18	38.94	74.00	-35.06	Horizontal
4	1994.1243	42.92	-3.14	39.78	74.00	-34.22	Horizontal
5	2329.4162	47.75	-3.13	44.62	74.00	-29.38	Horizontal
6	2829.2287	43.31	-1.41	41.90	74.00	-32.10	Horizontal

- Note: 1. Measurement = Reading Level + Correct Factor.
2. If Peak Result complies with AV limit, AV Result is deemed to comply with AV limit.
3. Test setup: RBW: 1 MHz, VBW: 3 MHz, Sweep time: auto.
4. Peak: Peak detector.
5. For below 3GHz part, filter losses were only considered in the spurious frequency bands and the authorized band was not corrected for Band Reject Filter losses.
6. Only the worst case emission was recorded, if it complies with the limit, the other emissions deemed to comply with the limit.



Test Mode	Channel	Polarization	Verdict
11N HT20	2427 MHz	Vertical	PASS



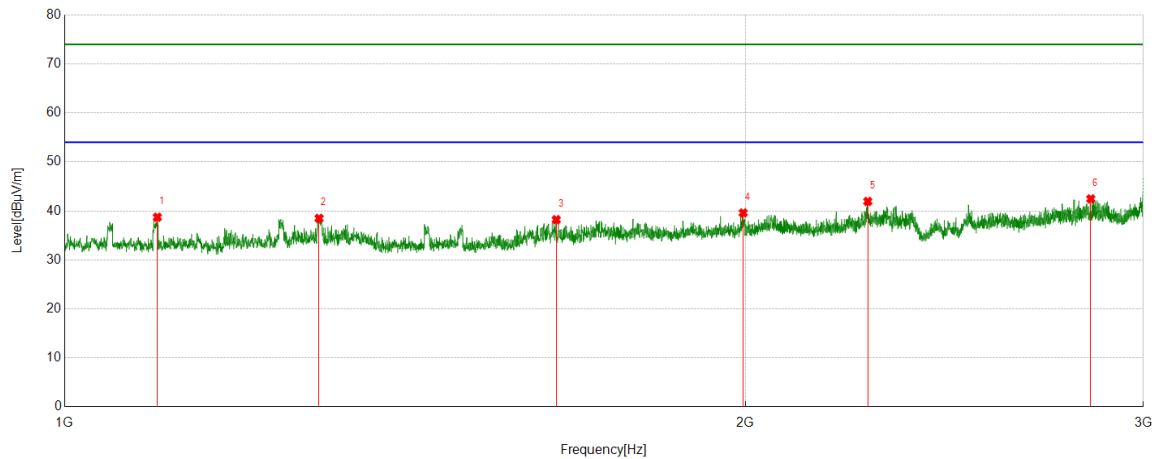
PK Result:

No.	Frequency	Reading Level	Correct Factor	Result	Limit	Margin	Remark
	[MHz]	[dBuV/m]	[dB]	[dBuV/m]	[dBuV/m]	[dB]	
1	1297.5372	46.22	-6.21	40.01	74.00	-33.99	Vertical
2	1344.293	46.44	-6.41	40.03	74.00	-33.97	Vertical
3	1997.1246	43.05	-3.09	39.96	74.00	-34.04	Vertical
4	2345.4182	44.25	-3.10	41.15	74.00	-32.85	Vertical
5	2664.208	45.86	-1.84	44.02	74.00	-29.98	Vertical
6	2886.7358	43.06	-0.82	42.24	74.00	-31.76	Vertical

- Note: 1. Measurement = Reading Level + Correct Factor.
2. If Peak Result complies with AV limit, AV Result is deemed to comply with AV limit.
3. Test setup: RBW: 1 MHz, VBW: 3 MHz, Sweep time: auto.
4. Peak: Peak detector.
5. For below 3GHz part, filter losses were only considered in the spurious frequency bands and the authorized band was not corrected for Band Reject Filter losses.
6. Only the worst case emission was recorded, if it complies with the limit, the other emissions deemed to comply with the limit.



Test Mode	Channel	Polarization	Verdict
11N HT20	2437 MHz	Horizontal	PASS



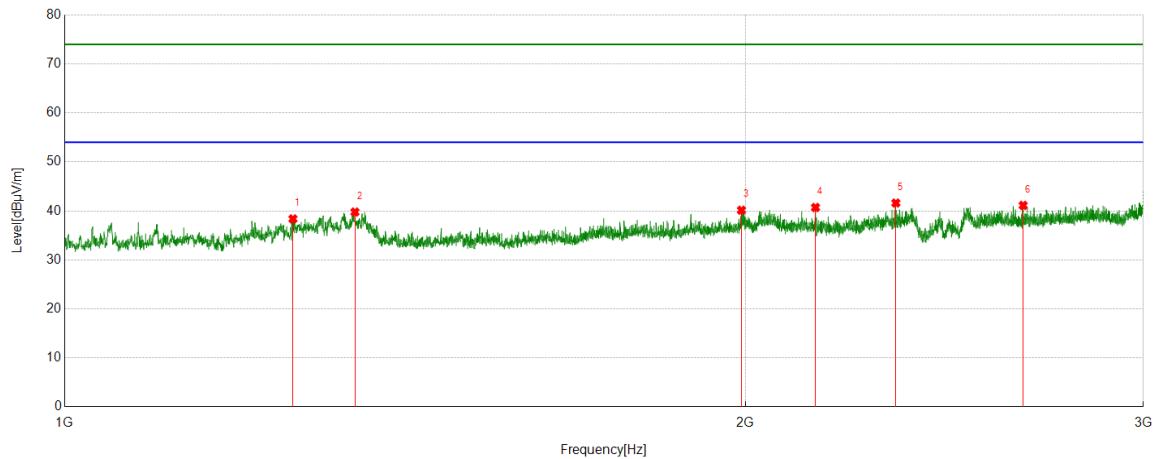
PK Result:

No.	Frequency	Reading Level	Correct Factor	Result	Limit	Margin	Remark
	[MHz]	[dBuV/m]	[dB]	[dBuV/m]	[dBuV/m]	[dB]	
1	1099.0124	44.87	-6.16	38.71	74.00	-35.29	Horizontal
2	1295.787	44.74	-6.26	38.48	74.00	-35.52	Horizontal
3	1649.8312	43.30	-5.09	38.21	74.00	-35.79	Horizontal
4	1995.8745	42.70	-3.11	39.59	74.00	-34.41	Horizontal
5	2265.9082	45.16	-3.23	41.93	74.00	-32.07	Horizontal
6	2843.7305	43.62	-1.17	42.45	74.00	-31.55	Horizontal

- Note: 1. Measurement = Reading Level + Correct Factor.
2. If Peak Result complies with AV limit, AV Result is deemed to comply with AV limit.
3. Test setup: RBW: 1 MHz, VBW: 3 MHz, Sweep time: auto.
4. Peak: Peak detector.
5. For below 3GHz part, filter losses were only considered in the spurious frequency bands and the authorized band was not corrected for Band Reject Filter losses.
6. Only the worst case emission was recorded, if it complies with the limit, the other emissions deemed to comply with the limit.



Test Mode	Channel	Polarization	Verdict
11N HT20	2437 MHz	Vertical	PASS



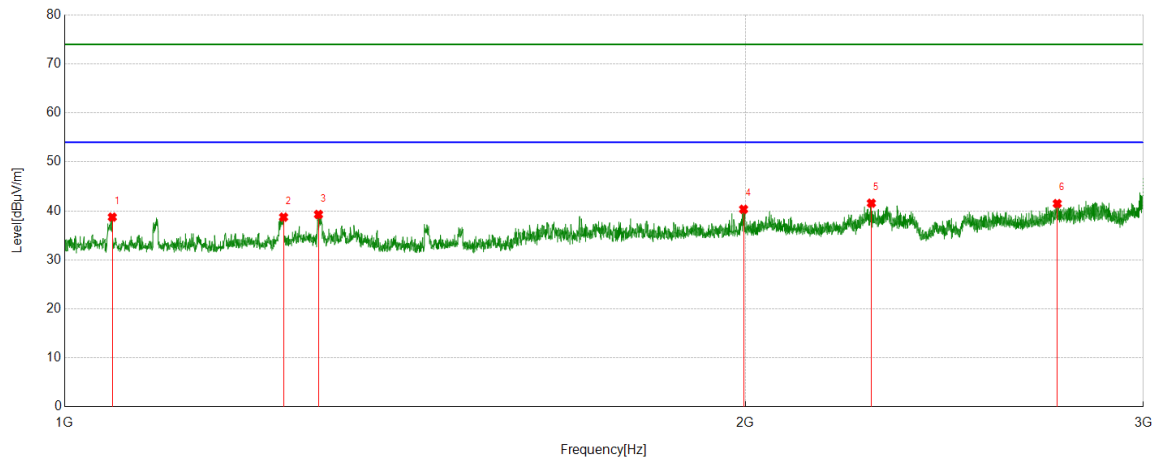
PK Result:

No.	Frequency	Reading Level	Correct Factor	Result	Limit	Margin	Remark
	[MHz]	[dBuV/m]	[dB]	[dBuV/m]	[dBuV/m]	[dB]	
1	1261.7827	44.68	-6.31	38.37	74.00	-35.63	Vertical
2	1344.043	46.18	-6.41	39.77	74.00	-34.23	Vertical
3	1992.374	43.30	-3.16	40.14	74.00	-33.86	Vertical
4	2148.3935	43.79	-3.09	40.70	74.00	-33.30	Vertical
5	2331.6665	44.74	-3.13	41.61	74.00	-32.39	Vertical
6	2654.4568	43.00	-1.87	41.13	74.00	-32.87	Vertical

- Note: 1. Measurement = Reading Level + Correct Factor.
2. If Peak Result complies with AV limit, AV Result is deemed to comply with AV limit.
3. Test setup: RBW: 1 MHz, VBW: 3 MHz, Sweep time: auto.
4. Peak: Peak detector.
5. For below 3GHz part, filter losses were only considered in the spurious frequency bands and the authorized band was not corrected for Band Reject Filter losses.
6. Only the worst case emission was recorded, if it complies with the limit, the other emissions deemed to comply with the limit.



Test Mode	Channel	Polarization	Verdict
11N HT20	2447 MHz	Horizontal	PASS



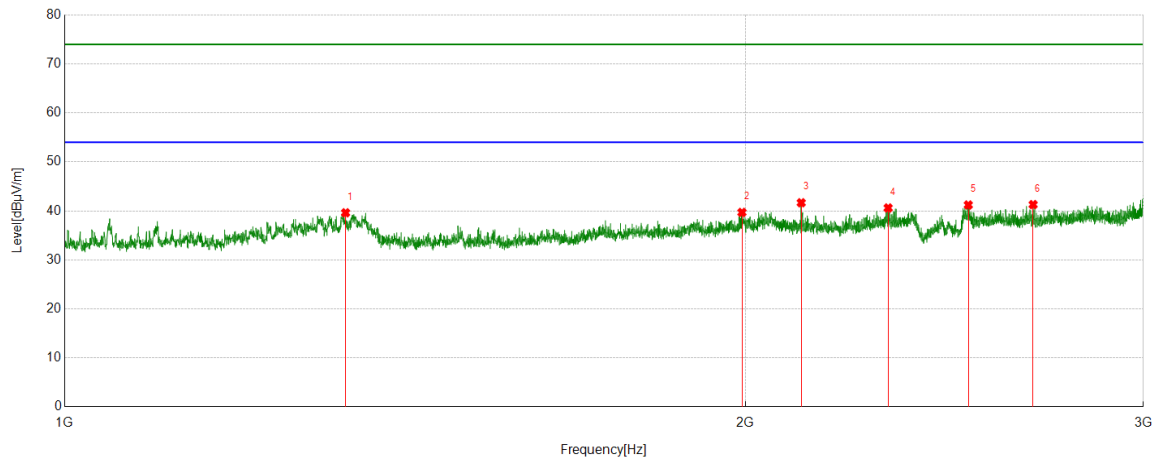
PK Result:

No.	Frequency	Reading Level	Correct Factor	Result	Limit	Margin	Remark
	[MHz]	[dBuV/m]	[dB]	[dBuV/m]	[dBuV/m]	[dB]	
1	1049.7562	44.34	-5.61	38.73	74.00	-35.27	Horizontal
2	1249.7812	44.87	-6.14	38.73	74.00	-35.27	Horizontal
3	1295.0369	45.55	-6.28	39.27	74.00	-34.73	Horizontal
4	1996.6246	43.43	-3.10	40.33	74.00	-33.67	Horizontal
5	2274.1593	44.80	-3.23	41.57	74.00	-32.43	Horizontal
6	2748.2185	42.75	-1.26	41.49	74.00	-32.51	Horizontal

- Note: 1. Measurement = Reading Level + Correct Factor.
2. If Peak Result complies with AV limit, AV Result is deemed to comply with AV limit.
3. Test setup: RBW: 1 MHz, VBW: 3 MHz, Sweep time: auto.
4. Peak: Peak detector.
5. For below 3GHz part, filter losses were only considered in the spurious frequency bands and the authorized band was not corrected for Band Reject Filter losses.
6. Only the worst case emission was recorded, if it complies with the limit, the other emissions deemed to comply with the limit.



Test Mode	Channel	Polarization	Verdict
11N HT20	2447 MHz	Vertical	PASS

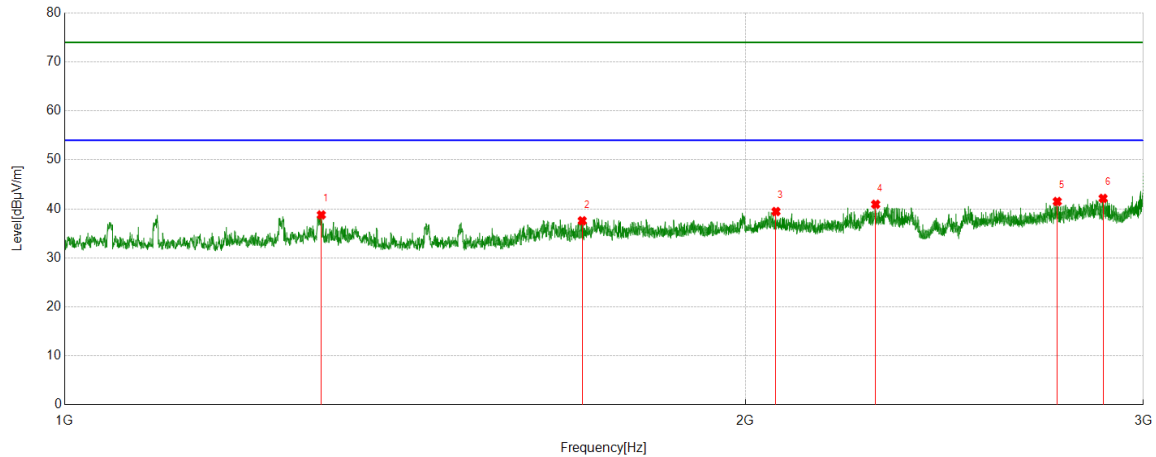


PK Result:

No.	Frequency	Reading Level	Correct Factor	Result	Limit	Margin	Remark
	[MHz]	[dBuV/m]	[dB]	[dBuV/m]	[dBuV/m]	[dB]	
1	1331.2914	46.03	-6.42	39.61	74.00	-34.39	Vertical
2	1993.3742	42.84	-3.15	39.69	74.00	-34.31	Vertical
3	2117.3897	44.64	-2.98	41.66	74.00	-32.34	Vertical
4	2313.4142	43.59	-2.99	40.60	74.00	-33.40	Vertical
5	2510.1888	43.18	-1.97	41.21	74.00	-32.79	Vertical
6	2681.4602	43.05	-1.76	41.29	74.00	-32.71	Vertical

- Note: 1. Measurement = Reading Level + Correct Factor.
2. If Peak Result complies with AV limit, AV Result is deemed to comply with AV limit.
3. Test setup: RBW: 1 MHz, VBW: 3 MHz, Sweep time: auto.
4. Peak: Peak detector.
5. For below 3GHz part, filter losses were only considered in the spurious frequency bands and the authorized band was not corrected for Band Reject Filter losses.
6. Only the worst case emission was recorded, if it complies with the limit, the other emissions deemed to comply with the limit.

Test Mode	Channel	Polarization	Verdict
11N HT20	2462 MHz	Horizontal	PASS



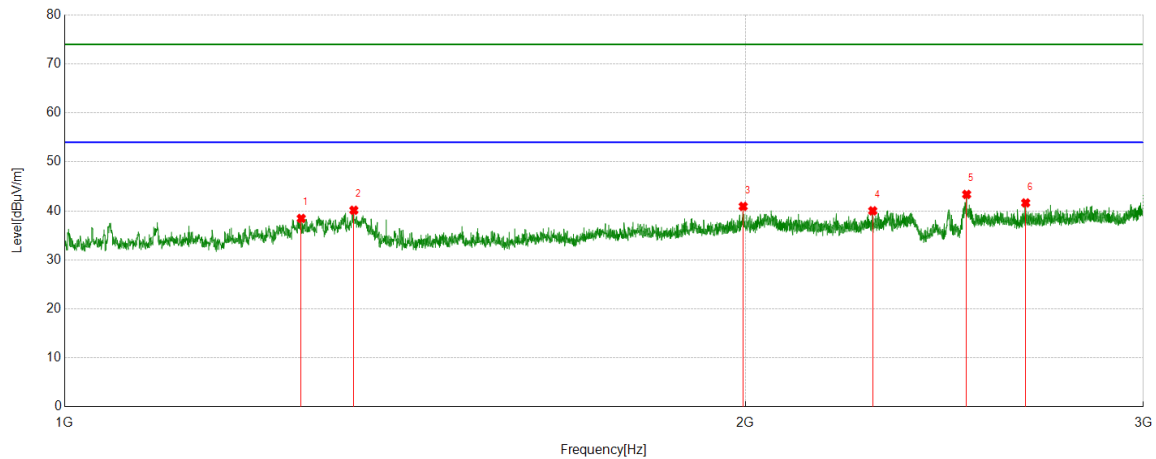
PK Result:

No.	Frequency [MHz]	Reading Level [dBuV/m]	Correct Factor [dB]	Result [dBuV/m]	Limit [dBuV/m]	Margin [dB]	Remark
1	1298.7873	44.94	-6.17	38.77	74.00	-35.23	Horizontal
2	1694.0868	42.56	-4.99	37.57	74.00	-36.43	Horizontal
3	2063.633	42.34	-2.88	39.46	74.00	-34.54	Horizontal
4	2284.1605	44.11	-3.18	40.93	74.00	-33.07	Horizontal
5	2748.2185	42.77	-1.26	41.51	74.00	-32.49	Horizontal
6	2879.4849	43.21	-1.06	42.15	74.00	-31.85	Horizontal

- Note: 1. Measurement = Reading Level + Correct Factor.
2. If Peak Result complies with AV limit, AV Result is deemed to comply with AV limit.
3. Test setup: RBW: 1 MHz, VBW: 3 MHz, Sweep time: auto.
4. Peak: Peak detector.
5. For below 3GHz part, filter losses were only considered in the spurious frequency bands and the authorized band was not corrected for Band Reject Filter losses.
6. Only the worst case emission was recorded, if it complies with the limit, the other emissions deemed to comply with the limit.



Test Mode	Channel	Polarization	Verdict
11N HT20	2462 MHz	Vertical	PASS



PK Result:

No.	Frequency	Reading Level	Correct Factor	Result	Limit	Margin	Remark
	[MHz]	[dBuV/m]	[dB]	[dBuV/m]	[dBuV/m]	[dB]	
1	1272.5341	44.65	-6.19	38.46	74.00	-35.54	Vertical
2	1342.5428	46.55	-6.42	40.13	74.00	-33.87	Vertical
3	1995.8745	44.03	-3.11	40.92	74.00	-33.08	Vertical
4	2277.4097	43.22	-3.21	40.01	74.00	-33.99	Vertical
5	2505.9382	45.35	-1.99	43.36	74.00	-30.64	Vertical
6	2661.2077	43.46	-1.83	41.63	74.00	-32.37	Vertical

- Note: 1. Measurement = Reading Level + Correct Factor.
2. If Peak Result complies with AV limit, AV Result is deemed to comply with AV limit.
3. Test setup: RBW: 1 MHz, VBW: 3 MHz, Sweep time: auto.
4. Peak: Peak detector.
5. For below 3GHz part, filter losses were only considered in the spurious frequency bands and the authorized band was not corrected for Band Reject Filter losses.
6. Only the worst case emission was recorded, if it complies with the limit, the other emissions deemed to comply with the limit.

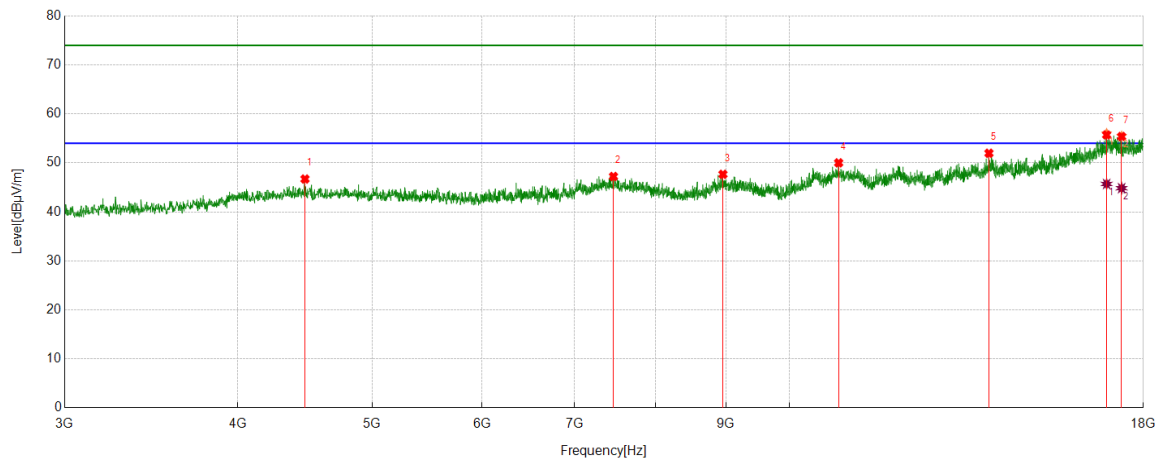


Part 2: 3GHz~18GHz

Antenna Type 2: External Dipole Antenna

HARMONICS AND SPURIOUS EMISSIONS

Test Mode	Channel	Polarization	Verdict
11B	2412 MHz	Horizontal	PASS



PK Result:

No.	Frequency	Reading Level	Correct Factor	Result	Limit	Margin	Remark
	[MHz]	[dBuV/m]	[dB]	[dBuV/m]	[dBuV/m]	[dB]	
1	4472.059	41.29	5.42	46.71	74.00	-27.29	Horizontal
2	7464.9331	38.55	8.68	47.23	74.00	-26.77	Horizontal
3	8953.8692	38.61	9.06	47.67	74.00	-26.33	Horizontal
4	10851.6065	37.62	12.39	50.01	74.00	-23.99	Horizontal
5	13928.8661	37.56	14.41	51.97	74.00	-22.03	Horizontal
6	16934.8669	37.58	18.41	55.99	74.00	-18.01	Horizontal
7	17362.4203	37.34	18.12	55.46	74.00	-18.54	Horizontal

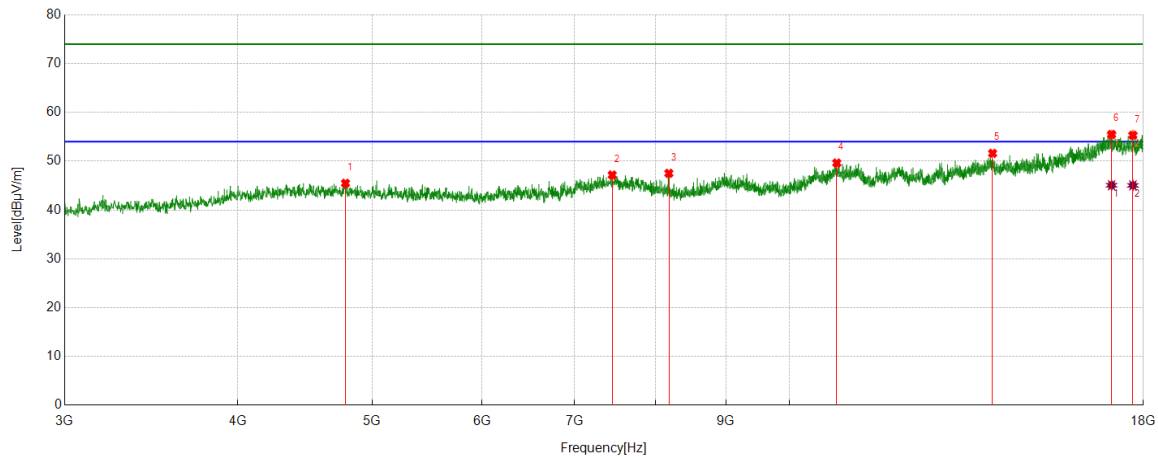
AV Result:

No.	Frequency	Reading Level	Correct Factor	Result	Limit	Margin	Remark
	[MHz]	[dBuV/m]	[dB]	[dBuV/m]	[dBuV/m]	[dB]	
1	16934.8669	27.29	18.41	45.70	54.00	-8.30	Horizontal
2	17362.4203	26.72	18.12	44.84	54.00	-9.16	Horizontal

- Note: 1. Measurement = Reading Level + Correct Factor.
2. If peak result complies with AV limit, AV Result is deemed to comply with AV limit.
3. Peak result: Peak detector, RBW: 1 MHz, VBW: 3 MHz.
4. Average result: Peak detector, RBW: 1 MHz, VBW: 1/T MHz(refer to clause 7.1.).
5. For above 3GHz part, filter losses were only considered in the spurious frequency bands and the authorized band was not corrected for HPF losses.
6. Only the worst case emission was recorded, if it complies with the limit, the other emissions deemed to comply with the limit.



Test Mode	Channel	Polarization	Verdict
11B	2412 MHz	Vertical	PASS



PK Result:

No.	Frequency	Reading Level	Correct Factor	Result	Limit	Margin	Remark
	[MHz]	[dBuV/m]	[dB]	[dBuV/m]	[dBuV/m]	[dB]	
1	4783.3479	39.64	5.84	45.48	74.00	-28.52	Vertical
2	7449.9312	38.53	8.65	47.18	74.00	-26.82	Vertical
3	8185.0231	40.37	7.15	47.52	74.00	-26.48	Vertical
4	10817.8522	37.41	12.22	49.63	74.00	-24.37	Vertical
5	14013.2517	37.32	14.29	51.61	74.00	-22.39	Vertical
6	17075.5094	36.42	18.93	55.35	74.00	-18.65	Vertical
7	17690.5863	37.43	17.94	55.37	74.00	-18.63	Vertical

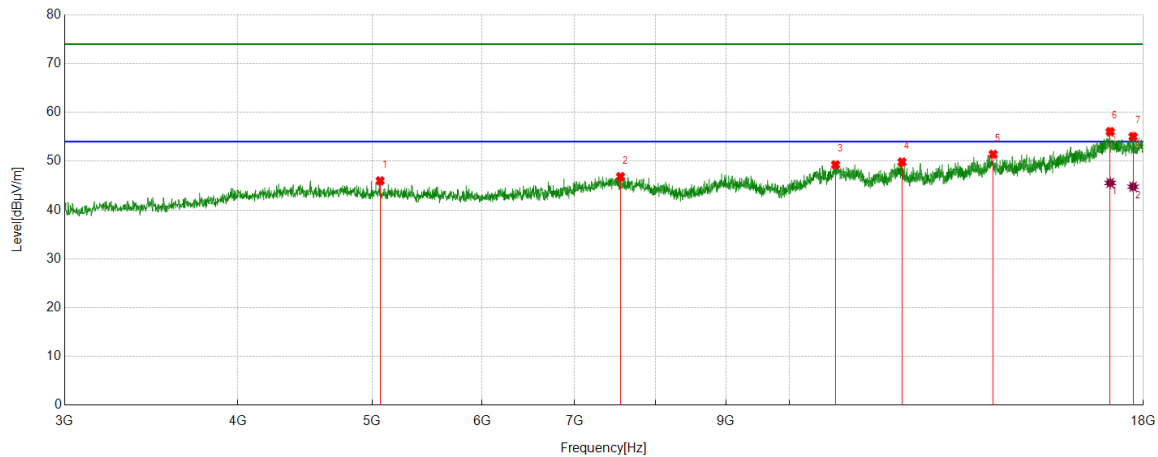
AV Result:

No.	Frequency	Reading Level	Correct Factor	Result	Limit	Margin	Remark
	[MHz]	[dBuV/m]	[dB]	[dBuV/m]	[dBuV/m]	[dB]	
1	17075.5094	26.15	18.93	45.08	54.00	-8.92	Vertical
2	17690.5863	27.11	17.94	45.05	54.00	-8.95	Vertical

- Note: 1. Measurement = Reading Level + Correct Factor.
2. If peak result complies with AV limit, AV Result is deemed to comply with AV limit.
3. Peak result: Peak detector, RBW: 1 MHz, VBW: 3 MHz.
4. Average result: Peak detector, RBW: 1 MHz, VBW: 1/T MHz(refer to clause 7.1.).
5. For above 3GHz part, filter losses were only considered in the spurious frequency bands and the authorized band was not corrected for HPF losses.
6. Only the worst case emission was recorded, if it complies with the limit, the other emissions deemed to comply with the limit.



Test Mode	Channel	Polarization	Verdict
11B	2417 MHz	Horizontal	PASS



PK Result:

No.	Frequency	Reading Level	Correct Factor	Result	Limit	Margin	Remark
	[MHz]	[dBuV/m]	[dB]	[dBuV/m]	[dBuV/m]	[dB]	
1	5066.5083	40.59	5.40	45.99	74.00	-28.01	Horizontal
2	7553.0691	38.32	8.53	46.85	74.00	-27.15	Horizontal
3	10795.3494	37.20	12.07	49.27	74.00	-24.73	Horizontal
4	12055.5069	37.22	12.62	49.84	74.00	-24.16	Horizontal
5	14026.3783	36.86	14.55	51.41	74.00	-22.59	Horizontal
6	17036.1295	37.02	18.94	55.96	74.00	-18.04	Horizontal
7	17696.2120	37.29	17.83	55.12	74.00	-18.88	Horizontal

AV Result:

No.	Frequency	Reading Level	Correct Factor	Result	Limit	Margin	Remark
	[MHz]	[dBuV/m]	[dB]	[dBuV/m]	[dBuV/m]	[dB]	
1	17036.1295	26.61	18.94	45.55	54.00	-8.45	Horizontal
2	17696.2120	26.94	17.83	44.77	54.00	-9.23	Horizontal

Note: 1. Measurement = Reading Level + Correct Factor.

2. If peak result complies with AV limit, AV Result is deemed to comply with AV limit.

3. Peak result: Peak detector, RBW: 1 MHz, VBW: 3 MHz.

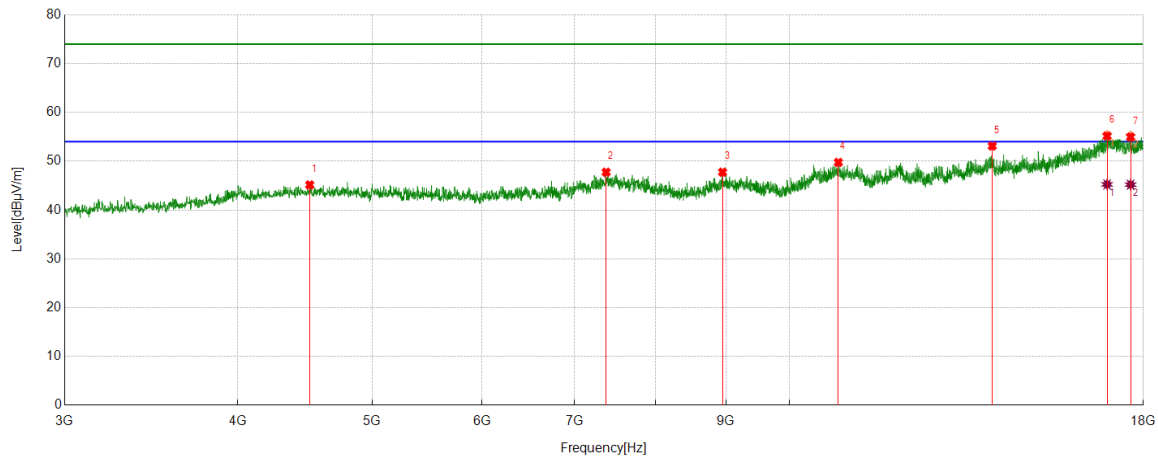
4. Average result: Peak detector, RBW: 1 MHz, VBW: 1/T MHz(refer to clause 7.1.).

5. For above 3GHz part, filter losses were only considered in the spurious frequency bands and the authorized band was not corrected for HPF losses.

6. Only the worst case emission was recorded, if it complies with the limit, the other emissions deemed to comply with the limit.



Test Mode	Channel	Polarization	Verdict
11B	2417 MHz	Vertical	PASS



PK Result:

No.	Frequency	Reading Level	Correct Factor	Result	Limit	Margin	Remark
	[MHz]	[dBuV/m]	[dB]	[dBuV/m]	[dBuV/m]	[dB]	
1	4507.6885	39.67	5.48	45.15	74.00	-28.85	Vertical
2	7374.9219	39.23	8.52	47.75	74.00	-26.25	Vertical
3	8948.2435	38.72	9.03	47.75	74.00	-26.25	Vertical
4	10845.9807	37.44	12.32	49.76	74.00	-24.24	Vertical
5	14005.7507	38.78	14.34	53.12	74.00	-20.88	Vertical
6	16947.9935	36.93	18.37	55.30	74.00	-18.70	Vertical
7	17623.0779	37.67	17.50	55.17	74.00	-18.83	Vertical

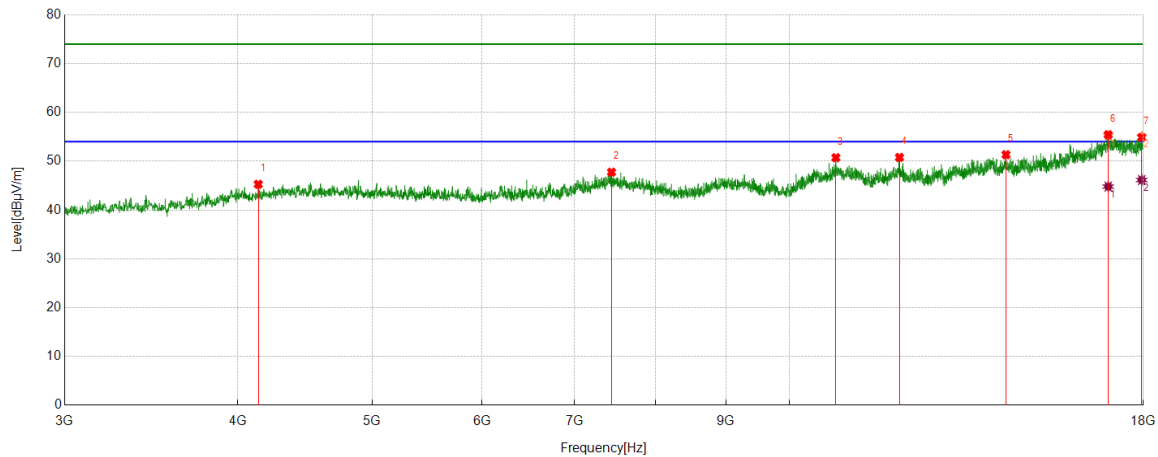
AV Result:

No.	Frequency	Reading Level	Correct Factor	Result	Limit	Margin	Remark
	[MHz]	[dBuV/m]	[dB]	[dBuV/m]	[dBuV/m]	[dB]	
1	16947.9935	26.88	18.37	45.25	54.00	-8.75	Vertical
2	17623.0779	27.70	17.50	45.20	54.00	-8.80	Vertical

- Note: 1. Measurement = Reading Level + Correct Factor.
2. If peak result complies with AV limit, AV Result is deemed to comply with AV limit.
3. Peak result: Peak detector, RBW: 1 MHz, VBW: 3 MHz.
4. Average result: Peak detector, RBW: 1 MHz, VBW: 1/T MHz(refer to clause 7.1.).
5. For above 3GHz part, filter losses were only considered in the spurious frequency bands and the authorized band was not corrected for HPF losses.
6. Only the worst case emission was recorded, if it complies with the limit, the other emissions deemed to comply with the limit.



Test Mode	Channel	Polarization	Verdict
11B	2437 MHz	Horizontal	PASS



PK Result:

No.	Frequency	Reading Level	Correct Factor	Result	Limit	Margin	Remark
	[MHz]	[dBuV/m]	[dB]	[dBuV/m]	[dBuV/m]	[dB]	
1	4138.2673	40.59	4.69	45.28	74.00	-28.72	Horizontal
2	7440.5551	39.10	8.65	47.75	74.00	-26.25	Horizontal
3	10800.9751	38.66	12.06	50.72	74.00	-23.28	Horizontal
4	12004.8756	37.94	12.84	50.78	74.00	-23.22	Horizontal
5	14328.291	37.30	14.04	51.34	74.00	-22.66	Horizontal
6	16979.8725	36.5	18.75	55.25	74.00	-18.75	Horizontal
7	17951.2439	36.53	18.56	55.09	74.00	-18.91	Horizontal

AV Result:

No.	Frequency	Reading Level	Correct Factor	Result	Limit	Margin	Remark
	[MHz]	[dBuV/m]	[dB]	[dBuV/m]	[dBuV/m]	[dB]	
1	16979.8725	26.05	18.75	44.80	54.00	-9.20	Horizontal
2	17951.2439	27.59	18.56	46.15	54.00	-7.85	Horizontal

Note: 1. Measurement = Reading Level + Correct Factor.

2. If peak result complies with AV limit, AV Result is deemed to comply with AV limit.

3. Peak result: Peak detector, RBW: 1 MHz, VBW: 3 MHz.

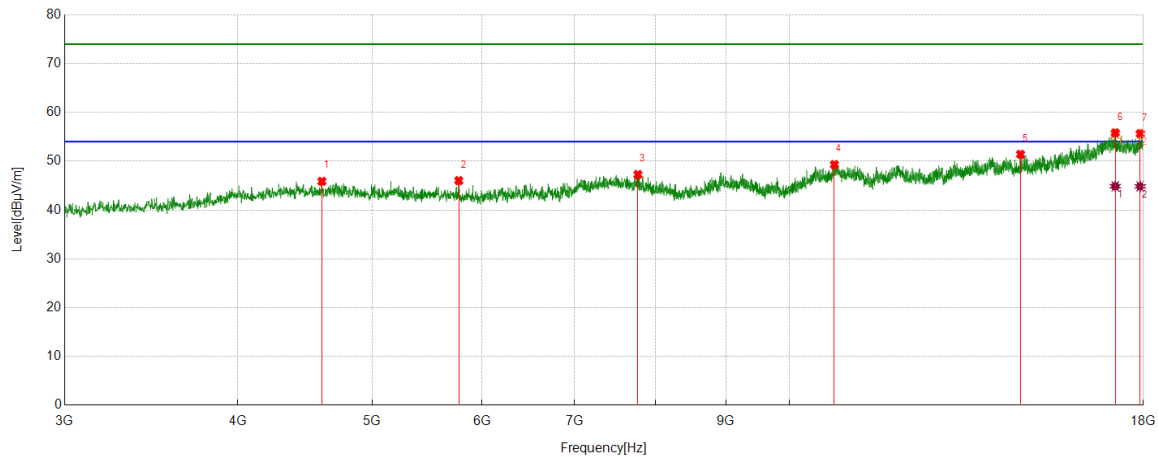
4. Average result: Peak detector, RBW: 1 MHz, VBW: 1/T MHz(refer to clause 7.1.).

5. For above 3GHz part, filter losses were only considered in the spurious frequency bands and the authorized band was not corrected for HPF losses.

6. Only the worst case emission was recorded, if it complies with the limit, the other emissions deemed to comply with the limit.



Test Mode	Channel	Polarization	Verdict
11B	2437 MHz	Vertical	PASS



PK Result:

No.	Frequency	Reading Level	Correct Factor	Result	Limit	Margin	Remark
	[MHz]	[dBuV/m]	[dB]	[dBuV/m]	[dBuV/m]	[dB]	
1	4599.5749	40.37	5.51	45.88	74.00	-28.12	Vertical
2	5773.4717	40.69	5.33	46.02	74.00	-27.98	Vertical
3	7774.3468	39.13	8.14	47.27	74.00	-26.73	Vertical
4	10774.7218	37.07	12.23	49.30	74.00	-24.70	Vertical
5	14678.9599	37.36	14.05	51.41	74.00	-22.59	Vertical
6	17180.5226	37.57	18.05	55.62	74.00	-18.38	Vertical
7	17908.1135	37.33	18.30	55.63	74.00	-18.37	Vertical

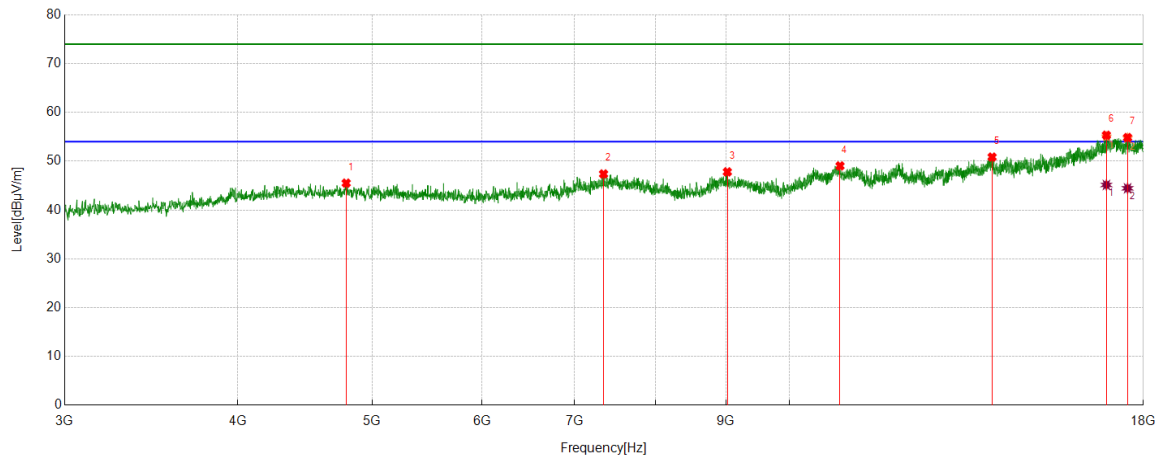
AV Result:

No.	Frequency	Reading Level	Correct Factor	Result	Limit	Margin	Remark
	[MHz]	[dBuV/m]	[dB]	[dBuV/m]	[dBuV/m]	[dB]	
1	17180.5226	26.82	18.05	44.87	54.00	-9.13	Vertical
2	17908.1135	26.54	18.30	44.84	54.00	-9.16	Vertical

- Note: 1. Measurement = Reading Level + Correct Factor.
2. If peak result complies with AV limit, AV Result is deemed to comply with AV limit.
3. Peak result: Peak detector, RBW: 1 MHz, VBW: 3 MHz.
4. Average result: Peak detector, RBW: 1 MHz, VBW: 1/T MHz(refer to clause 7.1.).
5. For above 3GHz part, filter losses were only considered in the spurious frequency bands and the authorized band was not corrected for HPF losses.
6. Only the worst case emission was recorded, if it complies with the limit, the other emissions deemed to comply with the limit.



Test Mode	Channel	Polarization	Verdict
11B	2457 MHz	Horizontal	PASS



PK Result:

No.	Frequency	Reading Level	Correct Factor	Result	Limit	Margin	Remark
	[MHz]	[dBuV/m]	[dB]	[dBuV/m]	[dBuV/m]	[dB]	
1	4788.9736	39.42	6.09	45.51	74.00	-28.49	Horizontal
2	7343.0429	38.85	8.54	47.39	74.00	-26.61	Horizontal
3	9019.5024	38.78	9.03	47.81	74.00	-26.19	Horizontal
4	10875.9845	36.83	12.21	49.04	74.00	-24.96	Horizontal
5	14002.0003	36.50	14.35	50.85	74.00	-23.15	Horizontal
6	16929.2412	36.73	18.31	55.04	74.00	-18.96	Horizontal
7	17534.9419	37.09	17.65	54.74	74.00	-19.26	Horizontal

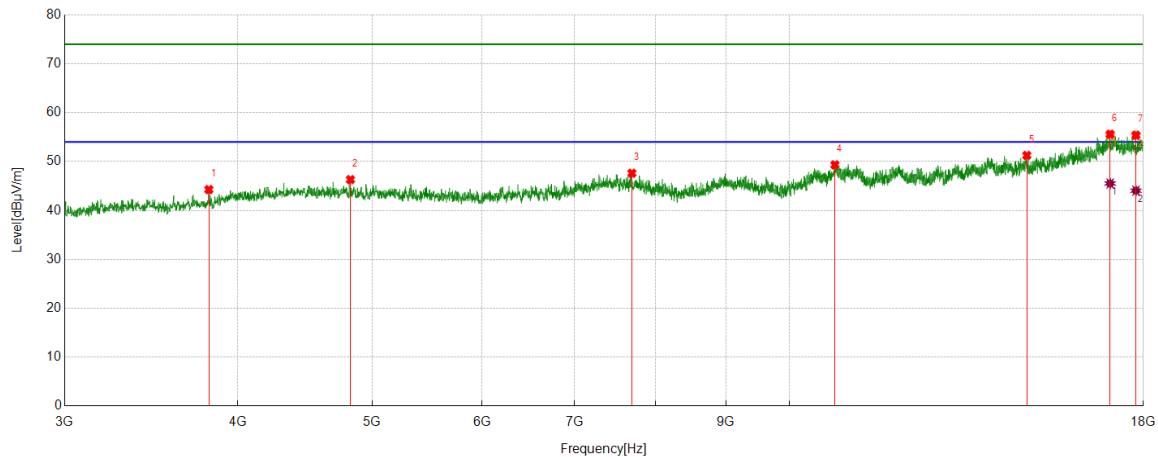
AV Result:

No.	Frequency	Reading Level	Correct Factor	Result	Limit	Margin	Remark
	[MHz]	[dBuV/m]	[dB]	[dBuV/m]	[dBuV/m]	[dB]	
1	16929.2412	26.83	18.31	45.14	54.00	-8.86	Horizontal
2	17534.9419	26.80	17.65	44.45	54.00	-9.55	Horizontal

- Note: 1. Measurement = Reading Level + Correct Factor.
2. If peak result complies with AV limit, AV Result is deemed to comply with AV limit.
3. Peak result: Peak detector, RBW: 1 MHz, VBW: 3 MHz.
4. Average result: Peak detector, RBW: 1 MHz, VBW: 1/T MHz(refer to clause 7.1.).
5. For above 3GHz part, filter losses were only considered in the spurious frequency bands and the authorized band was not corrected for HPF losses.
6. Only the worst case emission was recorded, if it complies with the limit, the other emissions deemed to comply with the limit.



Test Mode	Channel	Polarization	Verdict
11B	2457 MHz	Vertical	PASS



PK Result:

No.	Frequency	Reading Level	Correct Factor	Result	Limit	Margin	Remark
	[MHz]	[dBuV/m]	[dB]	[dBuV/m]	[dBuV/m]	[dB]	
1	3811.9765	40.75	3.52	44.27	74.00	-29.73	Vertical
2	4822.7278	40.96	5.35	46.31	74.00	-27.69	Vertical
3	7697.4622	39.07	8.55	47.62	74.00	-26.38	Vertical
4	10784.098	37.19	12.13	49.32	74.00	-24.68	Vertical
5	14832.7291	37.01	14.25	51.26	74.00	-22.74	Vertical
6	17034.2543	36.44	18.97	55.41	74.00	-18.59	Vertical
7	17780.5976	36.99	18.31	55.30	74.00	-18.70	Vertical

AV Result:

No.	Frequency	Reading Level	Correct Factor	Result	Limit	Margin	Remark
	[MHz]	[dBuV/m]	[dB]	[dBuV/m]	[dBuV/m]	[dB]	
1	17034.2543	26.55	18.97	45.52	54.00	-8.48	Vertical
2	17780.5976	25.74	18.31	44.05	54.00	-9.95	Vertical

Note: 1. Measurement = Reading Level + Correct Factor.

2. If peak result complies with AV limit, AV Result is deemed to comply with AV limit.

3. Peak result: Peak detector, RBW: 1 MHz, VBW: 3 MHz.

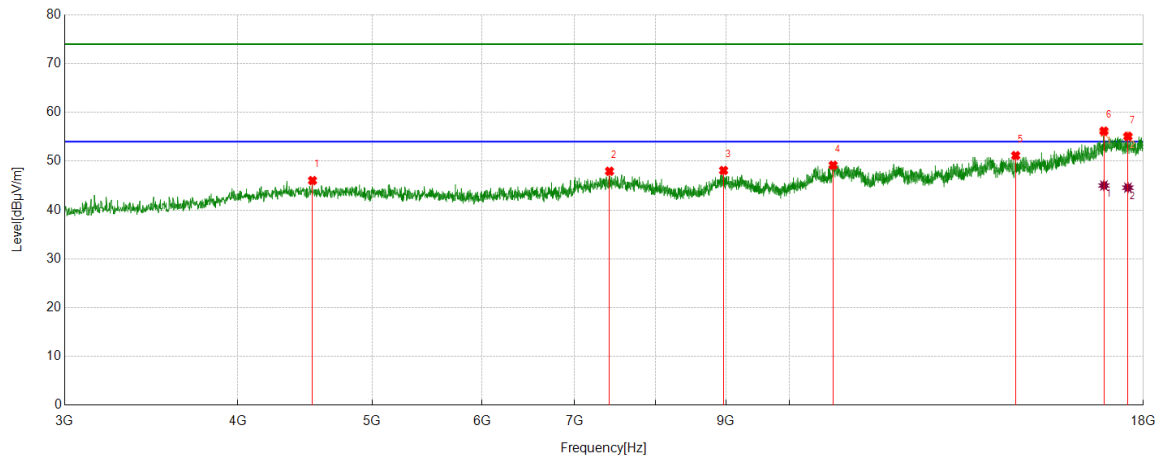
4. Average result: Peak detector, RBW: 1 MHz, VBW: 1/T MHz(refer to clause 7.1.).

5. For above 3GHz part, filter losses were only considered in the spurious frequency bands and the authorized band was not corrected for HPF losses.

6. Only the worst case emission was recorded, if it complies with the limit, the other emissions deemed to comply with the limit.



Test Mode	Channel	Polarization	Verdict
11B	2462 MHz	Horizontal	PASS



PK Result:

No.	Frequency	Reading Level	Correct Factor	Result	Limit	Margin	Remark
	[MHz]	[dBuV/m]	[dB]	[dBuV/m]	[dBuV/m]	[dB]	
1	4528.316	40.70	5.34	46.04	74.00	-27.96	Horizontal
2	7416.177	39.33	8.62	47.95	74.00	-26.05	Horizontal
3	8963.2454	39.11	9.00	48.11	74.00	-25.89	Horizontal
4	10752.219	37.00	12.17	49.17	74.00	-24.83	Horizontal
5	14560.8201	37.43	13.73	51.16	74.00	-22.84	Horizontal
6	16859.8575	37.86	18.05	55.91	74.00	-18.09	Horizontal
7	17544.3180	37.35	17.68	55.03	74.00	-18.97	Horizontal

AV Result:

No.	Frequency	Reading Level	Correct Factor	Result	Limit	Margin	Remark
	[MHz]	[dBuV/m]	[dB]	[dBuV/m]	[dBuV/m]	[dB]	
1	16859.8575	26.97	18.05	45.02	54.00	-8.98	Horizontal
2	17544.3180	26.90	17.68	44.58	54.00	-9.42	Horizontal

Note: 1. Measurement = Reading Level + Correct Factor.

2. If peak result complies with AV limit, AV Result is deemed to comply with AV limit.

3. Peak result: Peak detector, RBW: 1 MHz, VBW: 3 MHz.

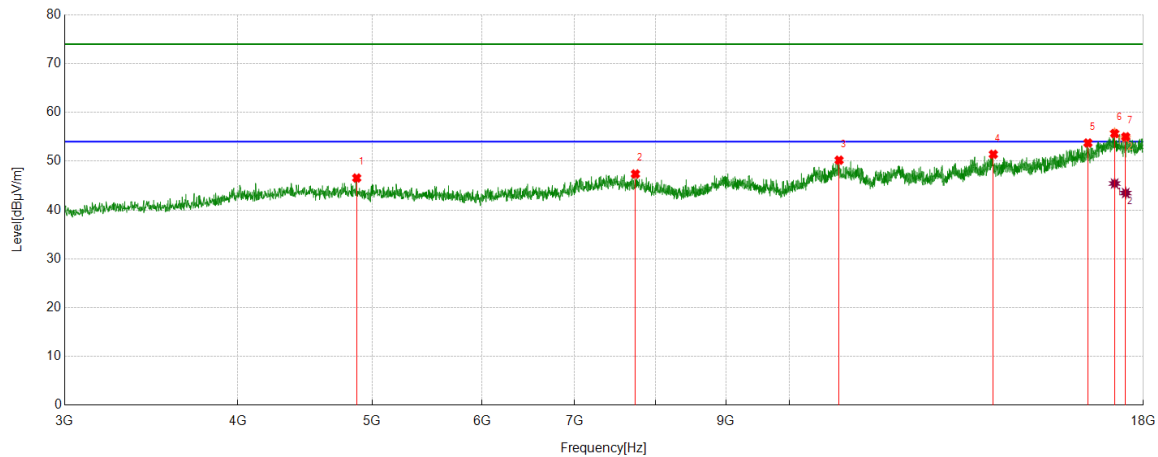
4. Average result: Peak detector, RBW: 1 MHz, VBW: 1/T MHz(refer to clause 7.1.).

5. For above 3GHz part, filter losses were only considered in the spurious frequency bands and the authorized band was not corrected for HPF losses.

6. Only the worst case emission was recorded, if it complies with the limit, the other emissions deemed to comply with the limit.



Test Mode	Channel	Polarization	Verdict
11B	2462 MHz	Vertical	PASS



PK Result:

No.	Frequency	Reading Level	Correct Factor	Result	Limit	Margin	Remark
	[MHz]	[dBuV/m]	[dB]	[dBuV/m]	[dBuV/m]	[dB]	
1	4873.3592	41.24	5.32	46.56	74.00	-27.44	Vertical
2	7742.4678	39.25	8.14	47.39	74.00	-26.61	Vertical
3	10859.1074	38.02	12.19	50.21	74.00	-23.79	Vertical
4	14030.1288	36.67	14.74	51.41	74.00	-22.59	Vertical
5	16417.3022	37.97	15.77	53.74	74.00	-20.26	Vertical
6	17161.7702	37.55	18.26	55.81	74.00	-18.19	Vertical
7	17480.5601	36.92	17.80	54.72	74.00	-19.28	Vertical

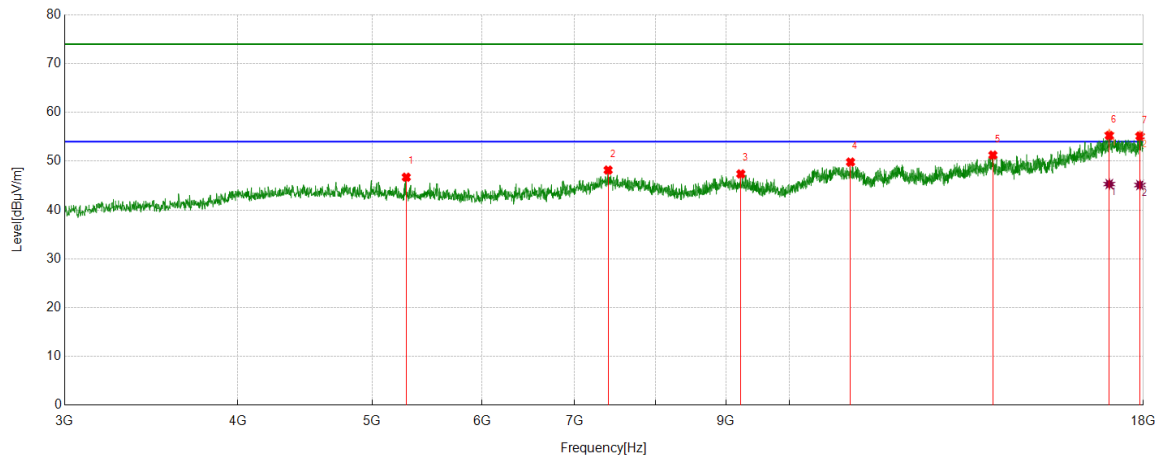
AV Result:

No.	Frequency	Reading Level	Correct Factor	Result	Limit	Margin	Remark
	[MHz]	[dBuV/m]	[dB]	[dBuV/m]	[dBuV/m]	[dB]	
1	17161.7702	27.17	18.26	45.43	54.00	-8.57	Vertical
2	17480.5601	25.68	17.80	43.48	54.00	-10.52	Vertical

- Note: 1. Measurement = Reading Level + Correct Factor.
2. If peak result complies with AV limit, AV Result is deemed to comply with AV limit.
3. Peak result: Peak detector, RBW: 1 MHz, VBW: 3 MHz.
4. Average result: Peak detector, RBW: 1 MHz, VBW: 1/T MHz(refer to clause 7.1.).
5. For above 3GHz part, filter losses were only considered in the spurious frequency bands and the authorized band was not corrected for HPF losses.
6. Only the worst case emission was recorded, if it complies with the limit, the other emissions deemed to comply with the limit.



Test Mode	Channel	Polarization	Verdict
11G	2412 MHz	Horizontal	PASS



PK Result:

No.	Frequency	Reading Level	Correct Factor	Result	Limit	Margin	Remark
	[MHz]	[dBuV/m]	[dB]	[dBuV/m]	[dBuV/m]	[dB]	
1	5291.5364	41.31	5.41	46.72	74.00	-27.28	Horizontal
2	7399.2999	39.50	8.68	48.18	74.00	-25.82	Horizontal
3	9223.903	38.72	8.67	47.39	74.00	-26.61	Horizontal
4	11067.2584	37.65	12.17	49.82	74.00	-24.18	Horizontal
5	14020.7526	37.00	14.25	51.25	74.00	-22.75	Horizontal
6	17009.8762	37	18.52	55.52	74.00	-18.48	Horizontal
7	17900.6126	36.81	18.40	55.21	74.00	-18.79	Horizontal

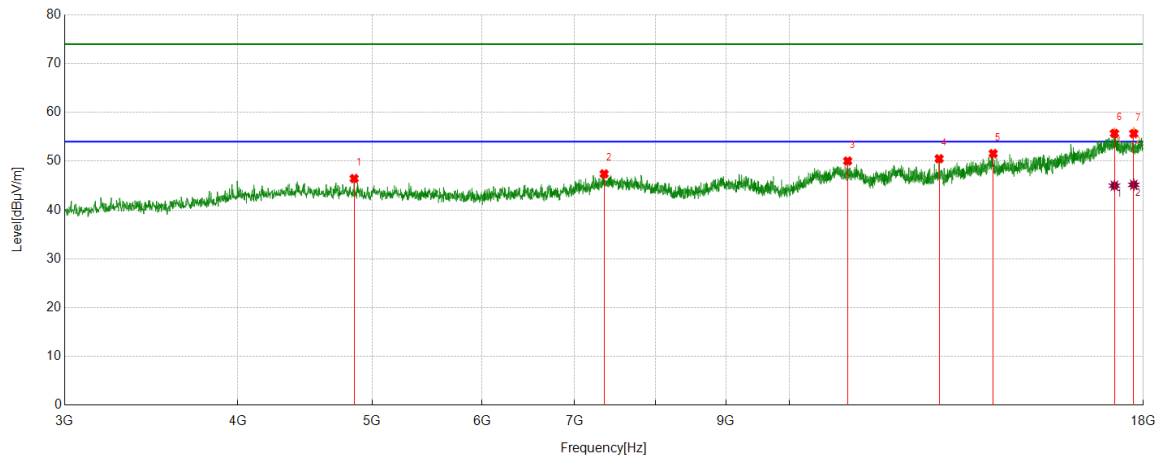
AV Result:

No.	Frequency	Reading Level	Correct Factor	Result	Limit	Margin	Remark
	[MHz]	[dBuV/m]	[dB]	[dBuV/m]	[dBuV/m]	[dB]	
1	17009.8762	26.80	18.52	45.32	54.00	-8.68	Horizontal
2	17900.6126	26.72	18.40	45.12	54.00	-8.88	Horizontal

- Note: 1. Measurement = Reading Level + Correct Factor.
2. If peak result complies with AV limit, AV Result is deemed to comply with AV limit.
3. Peak result: Peak detector, RBW: 1 MHz, VBW: 3 MHz.
4. Average result: Peak detector, RBW: 1 MHz, VBW: 1/T MHz(refer to clause 7.1.).
5. For above 3GHz part, filter losses were only considered in the spurious frequency bands and the authorized band was not corrected for HPF losses.
6. Only the worst case emission was recorded, if it complies with the limit, the other emissions deemed to comply with the limit.



Test Mode	Channel	Polarization	Verdict
11G	2412 MHz	Vertical	PASS



PK Result:

No.	Frequency	Reading Level	Correct Factor	Result	Limit	Margin	Remark
	[MHz]	[dBuV/m]	[dB]	[dBuV/m]	[dBuV/m]	[dB]	
1	4852.7316	41.02	5.43	46.45	74.00	-27.55	Vertical
2	7350.5438	38.96	8.45	47.41	74.00	-26.59	Vertical
3	11014.7518	37.53	12.51	50.04	74.00	-23.96	Vertical
4	12822.4778	38.76	11.75	50.51	74.00	-23.49	Vertical
5	14026.3783	37.02	14.55	51.57	74.00	-22.43	Vertical
6	17156.1445	37.55	18.25	55.80	74.00	-18.20	Vertical
7	17716.8396	38.45	17.47	55.92	74.00	-18.08	Vertical

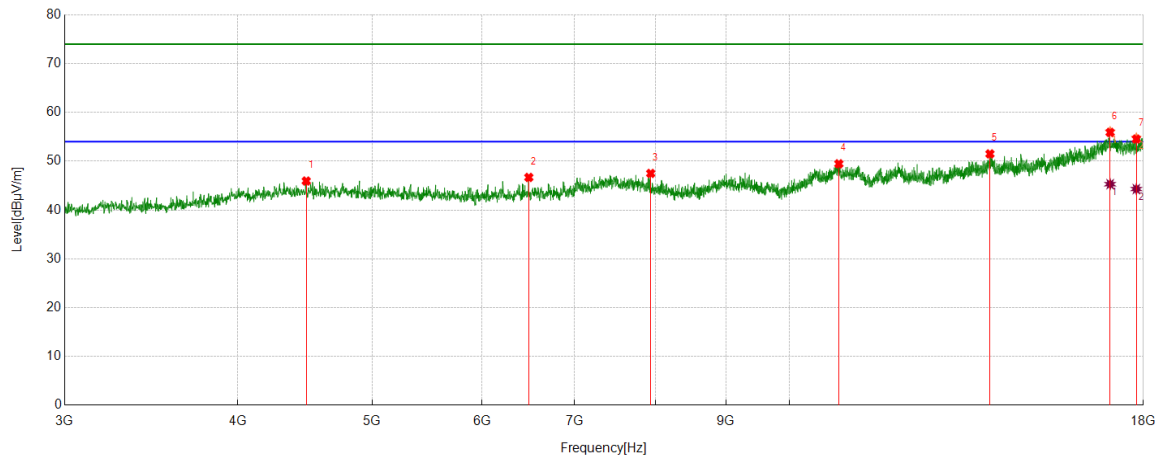
AV Result:

No.	Frequency	Reading Level	Correct Factor	Result	Limit	Margin	Remark
	[MHz]	[dBuV/m]	[dB]	[dBuV/m]	[dBuV/m]	[dB]	
1	17156.1445	26.73	18.25	44.98	54.00	-9.02	Vertical
2	17716.8396	27.70	17.47	45.17	54.00	-8.83	Vertical

- Note: 1. Measurement = Reading Level + Correct Factor.
2. If peak result complies with AV limit, AV Result is deemed to comply with AV limit.
3. Peak result: Peak detector, RBW: 1 MHz, VBW: 3 MHz.
4. Average result: Peak detector, RBW: 1 MHz, VBW: 1/T MHz(refer to clause 7.1.).
5. For above 3GHz part, filter losses were only considered in the spurious frequency bands and the authorized band was not corrected for HPF losses.
6. Only the worst case emission was recorded, if it complies with the limit, the other emissions deemed to comply with the limit.



Test Mode	Channel	Polarization	Verdict
11G	2427 MHz	Horizontal	PASS



PK Result:

No.	Frequency	Reading Level	Correct Factor	Result	Limit	Margin	Remark
	[MHz]	[dBuV/m]	[dB]	[dBuV/m]	[dBuV/m]	[dB]	
1	4481.4352	40.71	5.23	45.94	74.00	-28.06	Horizontal
2	6486.0608	39.65	7.03	46.68	74.00	-27.32	Horizontal
3	7941.2427	39.77	7.73	47.50	74.00	-26.50	Horizontal
4	10855.3569	37.18	12.29	49.47	74.00	-24.53	Horizontal
5	13951.3689	37.31	14.19	51.50	74.00	-22.50	Horizontal
6	17034.2543	37.08	18.97	56.05	74.00	-17.95	Horizontal
7	17791.8490	37.37	17.40	54.77	74.00	-19.23	Horizontal

AV Result:

No.	Frequency	Reading Level	Correct Factor	Result	Limit	Margin	Remark
	[MHz]	[dBuV/m]	[dB]	[dBuV/m]	[dBuV/m]	[dB]	
1	17034.2543	26.33	18.97	45.30	54.00	-8.70	Horizontal
2	17791.8490	26.90	17.40	44.30	54.00	-9.70	Horizontal

Note: 1. Measurement = Reading Level + Correct Factor.

2. If peak result complies with AV limit, AV Result is deemed to comply with AV limit.

3. Peak result: Peak detector, RBW: 1 MHz, VBW: 3 MHz.

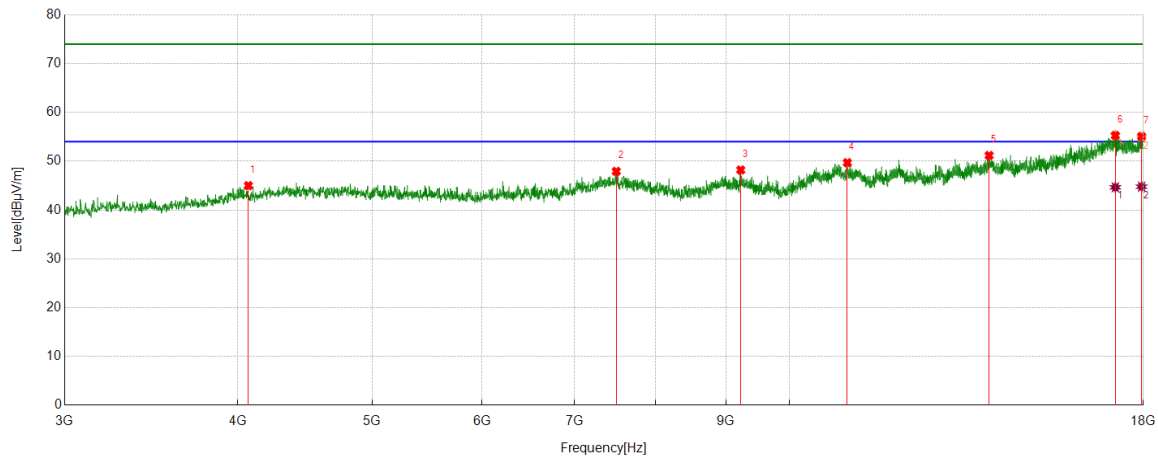
4. Average result: Peak detector, RBW: 1 MHz, VBW: 1/T MHz(refer to clause 7.1.).

5. For above 3GHz part, filter losses were only considered in the spurious frequency bands and the authorized band was not corrected for HPF losses.

6. Only the worst case emission was recorded, if it complies with the limit, the other emissions deemed to comply with the limit.



Test Mode	Channel	Polarization	Verdict
11G	2427 MHz	Vertical	PASS



PK Result:

No.	Frequency	Reading Level	Correct Factor	Result	Limit	Margin	Remark
	[MHz]	[dBuV/m]	[dB]	[dBuV/m]	[dBuV/m]	[dB]	
1	4070.7588	40.60	4.40	45.00	74.00	-29.00	Vertical
2	7500.5626	39.33	8.59	47.92	74.00	-26.08	Vertical
3	9222.0278	39.55	8.66	48.21	74.00	-25.79	Vertical
4	11009.1261	37.26	12.44	49.70	74.00	-24.30	Vertical
5	13932.6166	36.74	14.44	51.18	74.00	-22.82	Vertical
6	17182.3978	37.21	18.08	55.29	74.00	-18.71	Vertical
7	17947.4934	36.39	18.50	54.89	74.00	-19.11	Vertical

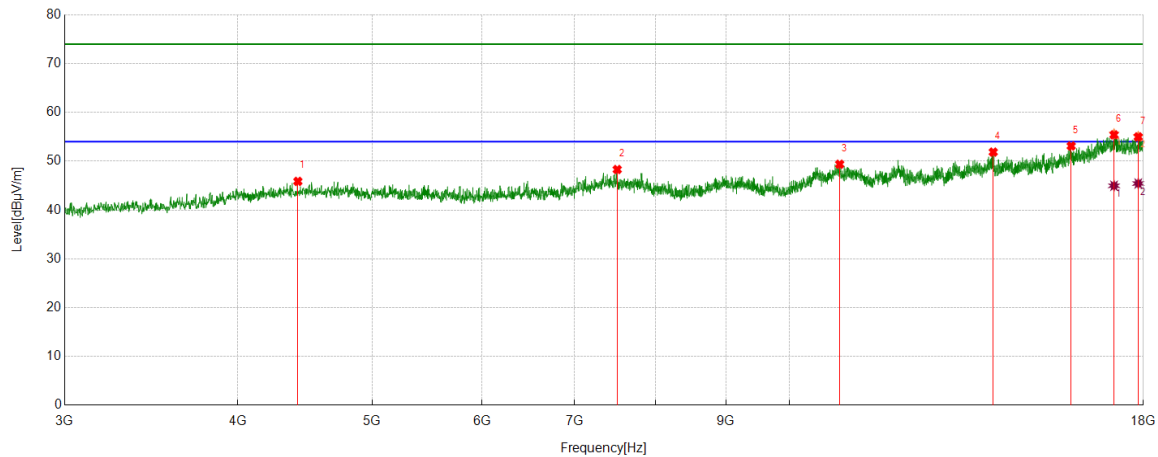
AV Result:

No.	Frequency	Reading Level	Correct Factor	Result	Limit	Margin	Remark
	[MHz]	[dBuV/m]	[dB]	[dBuV/m]	[dBuV/m]	[dB]	
1	17182.3978	26.57	18.08	44.65	54.00	-9.35	Vertical
2	17947.4934	26.28	18.50	44.78	54.00	-9.22	Vertical

- Note: 1. Measurement = Reading Level + Correct Factor.
2. If peak result complies with AV limit, AV Result is deemed to comply with AV limit.
3. Peak result: Peak detector, RBW: 1 MHz, VBW: 3 MHz.
4. Average result: Peak detector, RBW: 1 MHz, VBW: 1/T MHz(refer to clause 7.1.).
5. For above 3GHz part, filter losses were only considered in the spurious frequency bands and the authorized band was not corrected for HPF losses.
6. Only the worst case emission was recorded, if it complies with the limit, the other emissions deemed to comply with the limit.



Test Mode	Channel	Polarization	Verdict
11G	2437 MHz	Horizontal	PASS



PK Result:

No.	Frequency	Reading Level	Correct Factor	Result	Limit	Margin	Remark
	[MHz]	[dBuV/m]	[dB]	[dBuV/m]	[dBuV/m]	[dB]	
1	4419.5524	40.59	5.28	45.87	74.00	-28.13	Horizontal
2	7511.814	39.66	8.64	48.30	74.00	-25.70	Horizontal
3	10870.3588	37.22	12.16	49.38	74.00	-24.62	Horizontal
4	14028.2535	37.22	14.65	51.87	74.00	-22.13	Horizontal
5	15967.2459	37.22	15.90	53.12	74.00	-20.88	Horizontal
6	17144.8931	37.34	18.28	55.62	74.00	-18.38	Horizontal
7	17848.1060	37.33	17.76	55.09	74.00	-18.91	Horizontal

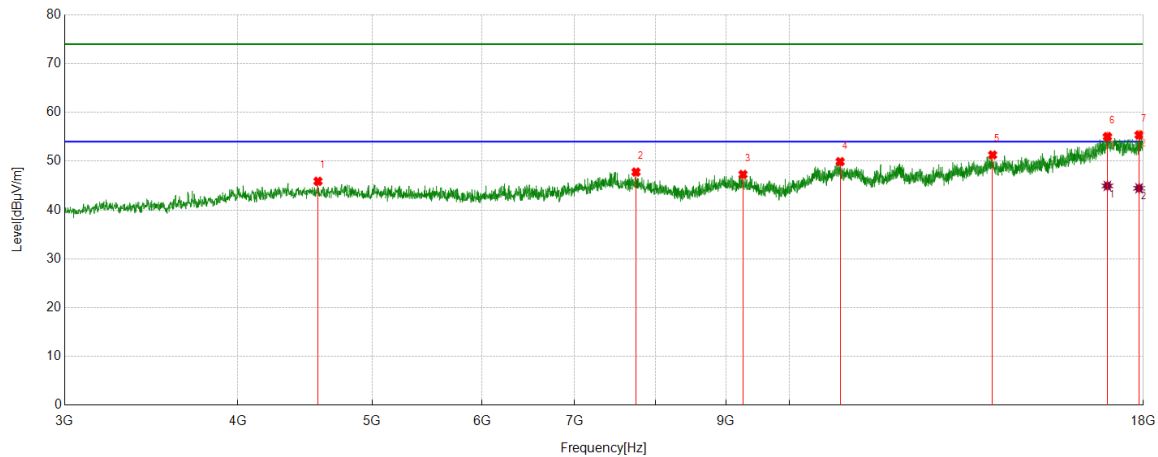
AV Result:

No.	Frequency	Reading Level	Correct Factor	Result	Limit	Margin	Remark
	[MHz]	[dBuV/m]	[dB]	[dBuV/m]	[dBuV/m]	[dB]	
1	17144.8931	26.69	18.28	44.97	54.00	-9.03	Horizontal
2	17848.1060	27.67	17.76	45.43	54.00	-8.57	Horizontal

- Note: 1. Measurement = Reading Level + Correct Factor.
2. If peak result complies with AV limit, AV Result is deemed to comply with AV limit.
3. Peak result: Peak detector, RBW: 1 MHz, VBW: 3 MHz.
4. Average result: Peak detector, RBW: 1 MHz, VBW: 1/T MHz(refer to clause 7.1.).
5. For above 3GHz part, filter losses were only considered in the spurious frequency bands and the authorized band was not corrected for HPF losses.
6. Only the worst case emission was recorded, if it complies with the limit, the other emissions deemed to comply with the limit.



Test Mode	Channel	Polarization	Verdict
11G	2437 MHz	Vertical	PASS



PK Result:

No.	Frequency	Reading Level	Correct Factor	Result	Limit	Margin	Remark
	[MHz]	[dBuV/m]	[dB]	[dBuV/m]	[dBuV/m]	[dB]	
1	4569.5712	40.61	5.28	45.89	74.00	-28.11	Vertical
2	7749.9687	39.63	8.15	47.78	74.00	-26.22	Vertical
3	9257.6572	38.47	8.82	47.29	74.00	-26.71	Vertical
4	10877.8597	37.68	12.22	49.90	74.00	-24.10	Vertical
5	14013.2517	36.99	14.29	51.28	74.00	-22.72	Vertical
6	16957.3697	36.39	18.58	54.97	74.00	-19.03	Vertical
7	17874.3593	37.13	18.26	55.39	74.00	-18.61	Vertical

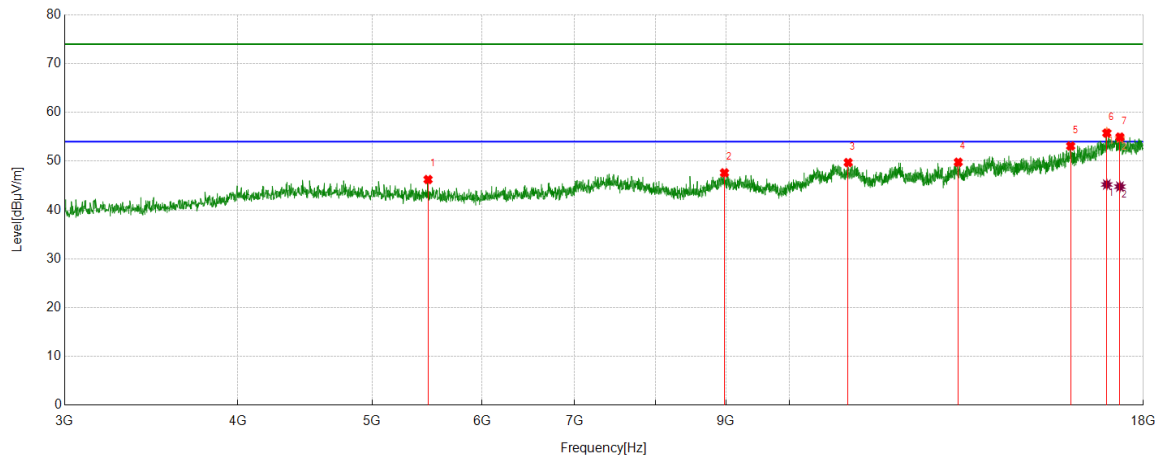
AV Result:

No.	Frequency	Reading Level	Correct Factor	Result	Limit	Margin	Remark
	[MHz]	[dBuV/m]	[dB]	[dBuV/m]	[dBuV/m]	[dB]	
1	16957.3697	26.36	18.58	44.94	54.00	-9.06	Vertical
2	17874.3593	26.20	18.26	44.46	54.00	-9.54	Vertical

- Note: 1. Measurement = Reading Level + Correct Factor.
2. If peak result complies with AV limit, AV Result is deemed to comply with AV limit.
3. Peak result: Peak detector, RBW: 1 MHz, VBW: 3 MHz.
4. Average result: Peak detector, RBW: 1 MHz, VBW: 1/T MHz(refer to clause 7.1.).
5. For above 3GHz part, filter losses were only considered in the spurious frequency bands and the authorized band was not corrected for HPF losses.
6. Only the worst case emission was recorded, if it complies with the limit, the other emissions deemed to comply with the limit.



Test Mode	Channel	Polarization	Verdict
11G	2447 MHz	Horizontal	PASS



PK Result:

No.	Frequency	Reading Level	Correct Factor	Result	Limit	Margin	Remark
	[MHz]	[dBuV/m]	[dB]	[dBuV/m]	[dBuV/m]	[dB]	
1	5486.5608	40.81	5.44	46.25	74.00	-27.75	Horizontal
2	8976.372	38.70	8.92	47.62	74.00	-26.38	Horizontal
3	11024.128	37.28	12.45	49.73	74.00	-24.27	Horizontal
4	13236.9046	37.54	12.26	49.80	74.00	-24.20	Horizontal
5	15954.1193	37.06	16.05	53.11	74.00	-20.89	Horizontal
6	16940.4926	37.46	18.46	55.92	74.00	-18.08	Horizontal
7	17313.6642	37.07	17.61	54.68	74.00	-19.32	Horizontal

AV Result:

No.	Frequency	Reading Level	Correct Factor	Result	Limit	Margin	Remark
	[MHz]	[dBuV/m]	[dB]	[dBuV/m]	[dBuV/m]	[dB]	
1	16940.4926	26.77	18.46	45.23	54.00	-8.77	Horizontal
2	17313.6642	27.18	17.61	44.79	54.00	-9.21	Horizontal

- Note: 1. Measurement = Reading Level + Correct Factor.
2. If peak result complies with AV limit, AV Result is deemed to comply with AV limit.
3. Peak result: Peak detector, RBW: 1 MHz, VBW: 3 MHz.
4. Average result: Peak detector, RBW: 1 MHz, VBW: 1/T MHz(refer to clause 7.1.).
5. For above 3GHz part, filter losses were only considered in the spurious frequency bands and the authorized band was not corrected for HPF losses.
6. Only the worst case emission was recorded, if it complies with the limit, the other emissions deemed to comply with the limit.