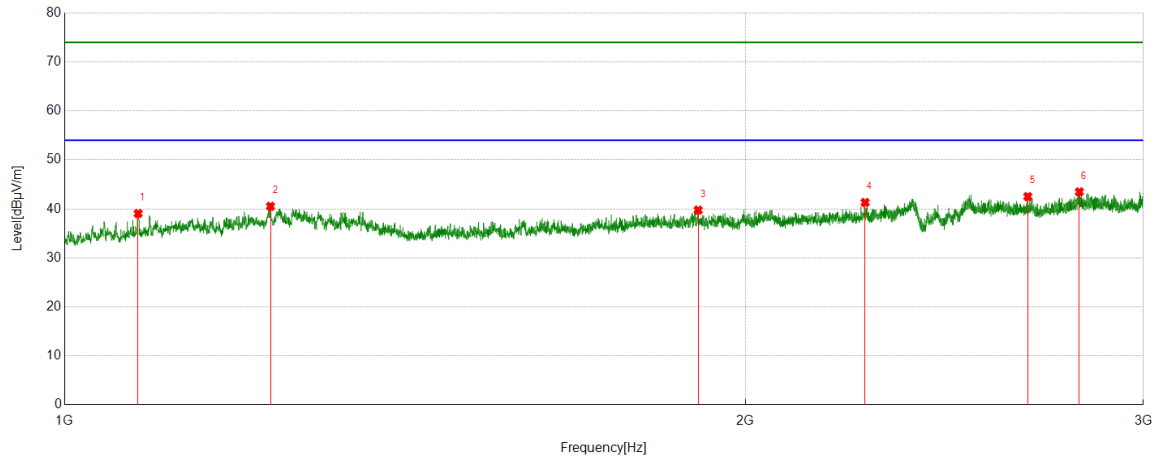




Test Mode	Channel	Polarization	Verdict
3DH5	LCH	Vertical	PASS



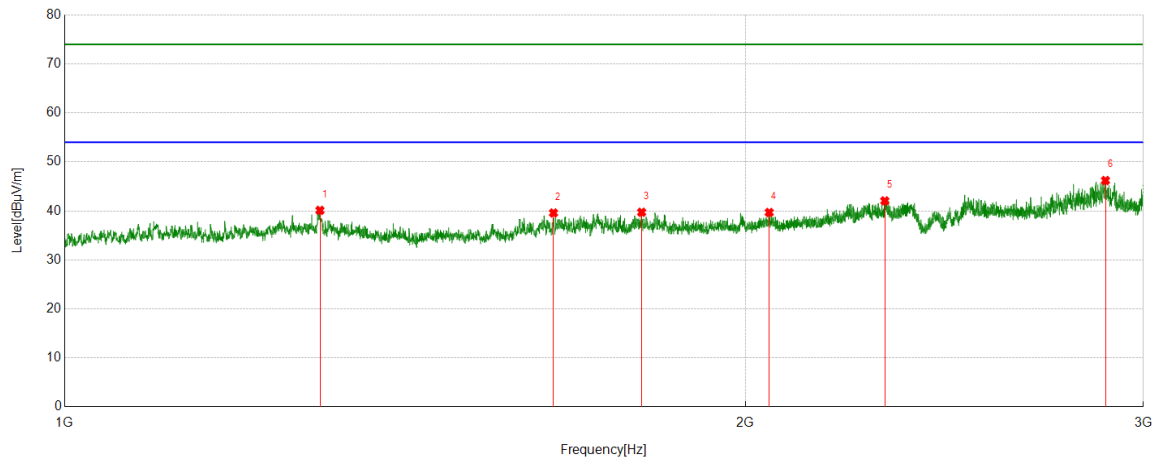
PK Result:

No.	Frequency	Reading Level	Correct Factor	Result	Limit	Margin	Remark
	[MHz]	[dBuV/m]	[dB]	[dBuV/m]	[dBuV/m]	[dB]	
1	1077.7207	44.47	-5.41	39.06	74.00	-34.94	Vertical
2	1233.3974	46.16	-5.63	40.53	74.00	-33.47	Vertical
3	1906.4542	43.05	-3.30	39.75	74.00	-34.25	Vertical
4	2259.7763	43.43	-2.12	41.31	74.00	-32.69	Vertical
5	2667.3007	43.24	-0.72	42.52	74.00	-31.48	Vertical
6	2810.7750	43.71	-0.23	43.48	74.00	-30.52	Vertical

- Note: 1. Measurement = Reading Level + Correct Factor.
2. If Peak Result complies with AV limit, AV Result is deemed to comply with AV limit.
3. Test setup: RBW: 1 MHz, VBW: 3 MHz, Sweep time: auto.
4. Peak: Peak detector.
5. For below 3GHz part, filter losses were only considered in the spurious frequency bands and the authorized band was not corrected for Band Reject Filter losses.
6. Only the worst case emission was recorded, if it complies with the limit, the other emissions deemed to comply with the limit.



Test Mode	Channel	Polarization	Verdict
3DH5	MCH	Horizontal	PASS



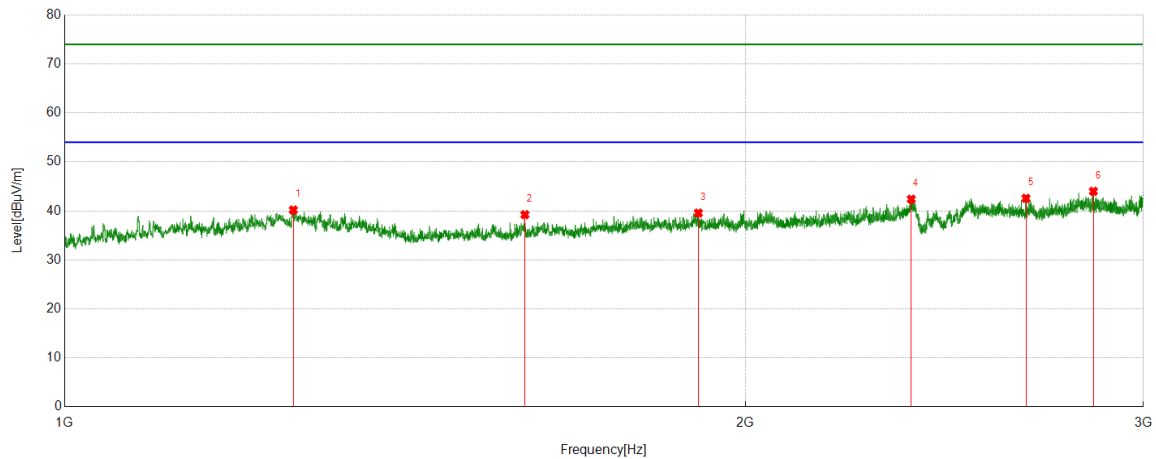
PK Result:

No.	Frequency	Reading Level	Correct Factor	Result	Limit	Margin	Remark
	[MHz]	[dBuV/m]	[dB]	[dBuV/m]	[dBuV/m]	[dB]	
1	1297.2914	45.92	-5.81	40.11	74.00	-33.89	Horizontal
2	1645.3329	44.60	-5.02	39.58	74.00	-34.42	Horizontal
3	1799.1249	43.56	-3.84	39.72	74.00	-34.28	Horizontal
4	2049.5457	42.06	-2.38	39.68	74.00	-34.32	Horizontal
5	2305.1726	43.79	-1.74	42.05	74.00	-31.95	Horizontal
6	2886.2077	45.74	0.46	46.20	74.00	-27.80	Horizontal

- Note: 1. Measurement = Reading Level + Correct Factor.
2. If Peak Result complies with AV limit, AV Result is deemed to comply with AV limit.
3. Test setup: RBW: 1 MHz, VBW: 3 MHz, Sweep time: auto.
4. Peak: Peak detector.
5. For below 3GHz part, filter losses were only considered in the spurious frequency bands and the authorized band was not corrected for Band Reject Filter losses.
6. Only the worst case emission was recorded, if it complies with the limit, the other emissions deemed to comply with the limit.



Test Mode	Channel	Polarization	Verdict
3DH5	MCH	Vertical	PASS



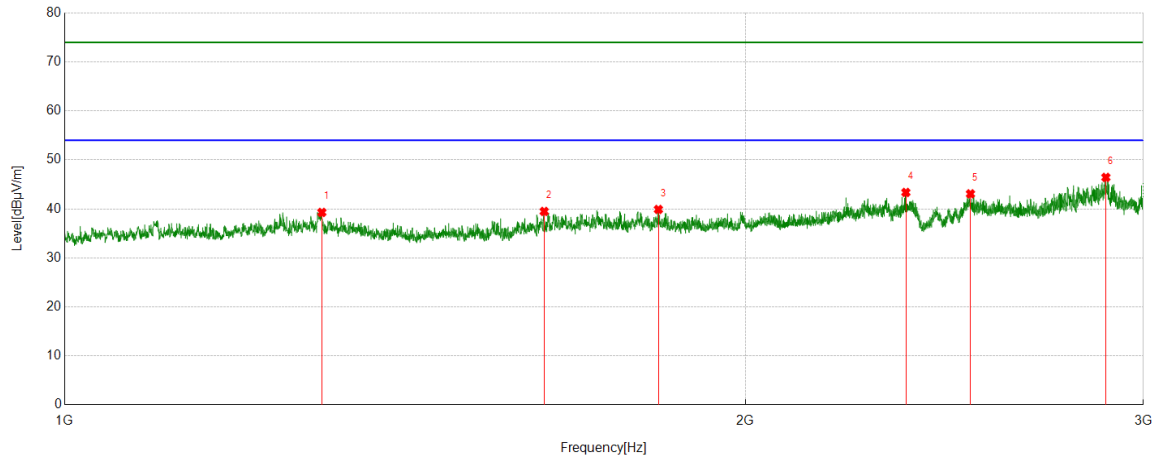
PK Result:

No.	Frequency	Reading Level	Correct Factor	Result	Limit	Margin	Remark
	[MHz]	[dBuV/m]	[dB]	[dBuV/m]	[dBuV/m]	[dB]	
1	1262.2456	45.83	-5.64	40.19	74.00	-33.81	Vertical
2	1598.1329	44.36	-5.13	39.23	74.00	-34.77	Vertical
3	1906.7499	42.87	-3.31	39.56	74.00	-34.44	Vertical
4	2368.5044	43.53	-1.14	42.39	74.00	-31.61	Vertical
5	2662.8285	43.25	-0.68	42.57	74.00	-31.43	Vertical
6	2851.2702	43.88	0.12	44.00	74.00	-30.00	Vertical

- Note: 1. Measurement = Reading Level + Correct Factor.
2. If Peak Result complies with AV limit, AV Result is deemed to comply with AV limit.
3. Test setup: RBW: 1 MHz, VBW: 3 MHz, Sweep time: auto.
4. Peak: Peak detector.
5. For below 3GHz part, filter losses were only considered in the spurious frequency bands and the authorized band was not corrected for Band Reject Filter losses.
6. Only the worst case emission was recorded, if it complies with the limit, the other emissions deemed to comply with the limit.



Test Mode	Channel	Polarization	Verdict
3DH5	HCH	Horizontal	PASS



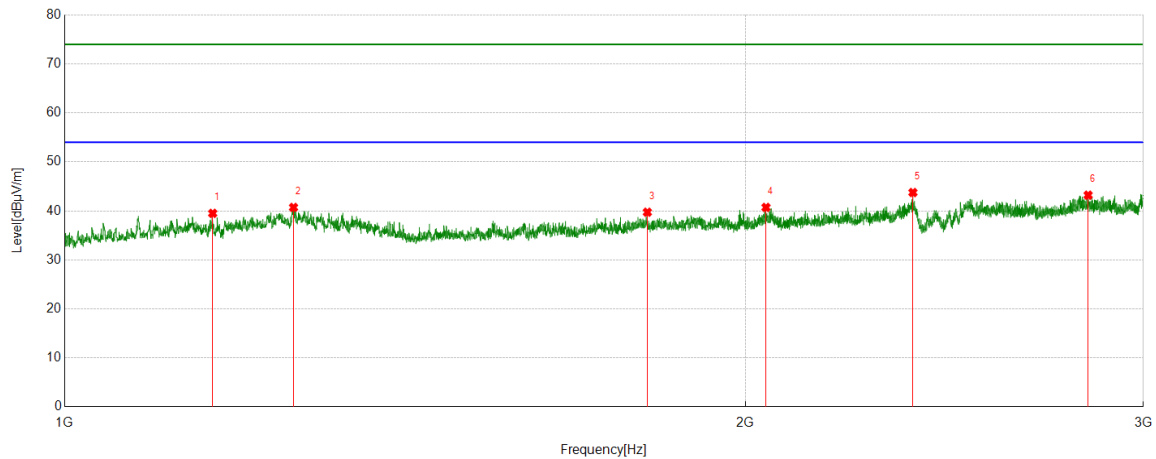
PK Result:

No.	Frequency	Reading Level	Correct Factor	Result	Limit	Margin	Remark
	[MHz]	[dBuV/m]	[dB]	[dBuV/m]	[dBuV/m]	[dB]	
1	1299.5068	45.11	-5.83	39.28	74.00	-34.72	Horizontal
2	1629.7875	44.55	-5.07	39.48	74.00	-34.52	Horizontal
3	1830.7605	43.58	-3.69	39.89	74.00	-34.11	Horizontal
4	2355.5908	44.77	-1.41	43.36	74.00	-30.64	Horizontal
5	2515.74896	43.42	-0.35	43.07	74.00	-30.93	Horizontal
6	2887.7416	45.94	0.49	46.43	74.00	-27.57	Horizontal

- Note: 1. Measurement = Reading Level + Correct Factor.
2. If Peak Result complies with AV limit, AV Result is deemed to comply with AV limit.
3. Test setup: RBW: 1 MHz, VBW: 3 MHz, Sweep time: auto.
4. Peak: Peak detector.
5. For below 3GHz part, filter losses were only considered in the spurious frequency bands and the authorized band was not corrected for Band Reject Filter losses.
6. Only the worst case emission was recorded, if it complies with the limit, the other emissions deemed to comply with the limit.



Test Mode	Channel	Polarization	Verdict
3DH5	HCH	Vertical	PASS



PK Result:

No.	Frequency	Reading Level	Correct Factor	Result	Limit	Margin	Remark
	[MHz]	[dBuV/m]	[dB]	[dBuV/m]	[dBuV/m]	[dB]	
1	1162.7494	45.01	-5.51	39.50	74.00	-34.50	Vertical
2	1262.4709	46.34	-5.63	40.71	74.00	-33.29	Vertical
3	1810.2297	43.81	-4.08	39.73	74.00	-34.27	Vertical
4	2042.7503	43.10	-2.39	40.71	74.00	-33.29	Vertical
5	2372.5248	44.87	-1.12	43.75	74.00	-30.25	Vertical
6	2836.0134	43.18	0.03	43.21	74.00	-30.79	Vertical

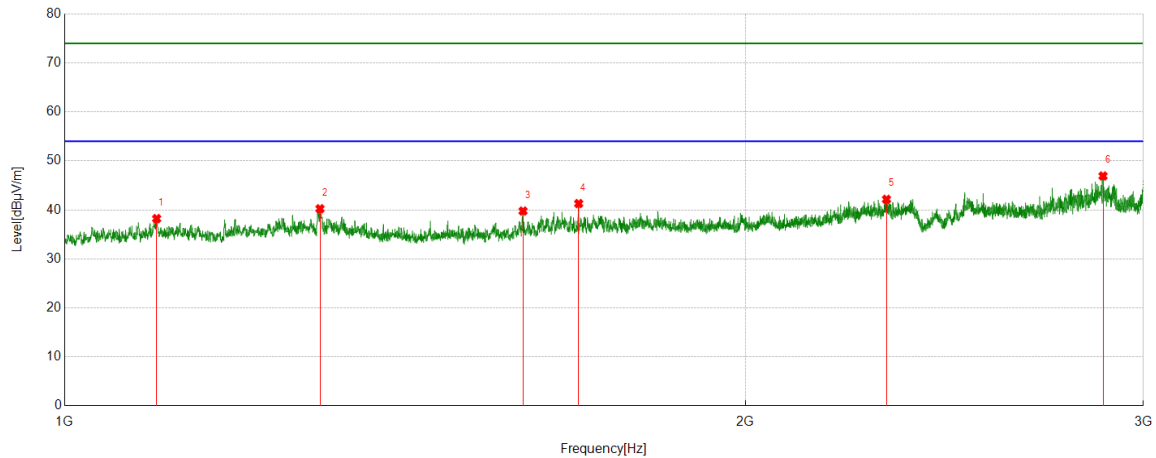
- Note: 1. Measurement = Reading Level + Correct Factor.
2. If Peak Result complies with AV limit, AV Result is deemed to comply with AV limit.
3. Test setup: RBW: 1 MHz, VBW: 3 MHz, Sweep time: auto.
4. Peak: Peak detector.
5. For below 3GHz part, filter losses were only considered in the spurious frequency bands and the authorized band was not corrected for Band Reject Filter losses.
6. Only the worst case emission was recorded, if it complies with the limit, the other emissions deemed to comply with the limit.



Antenna Type 1: PCB Antenna

HARMONICS AND SPURIOUS EMISSIONS

Test Mode	Channel	Polarization	Verdict
DH5	LCH	Horizontal	PASS



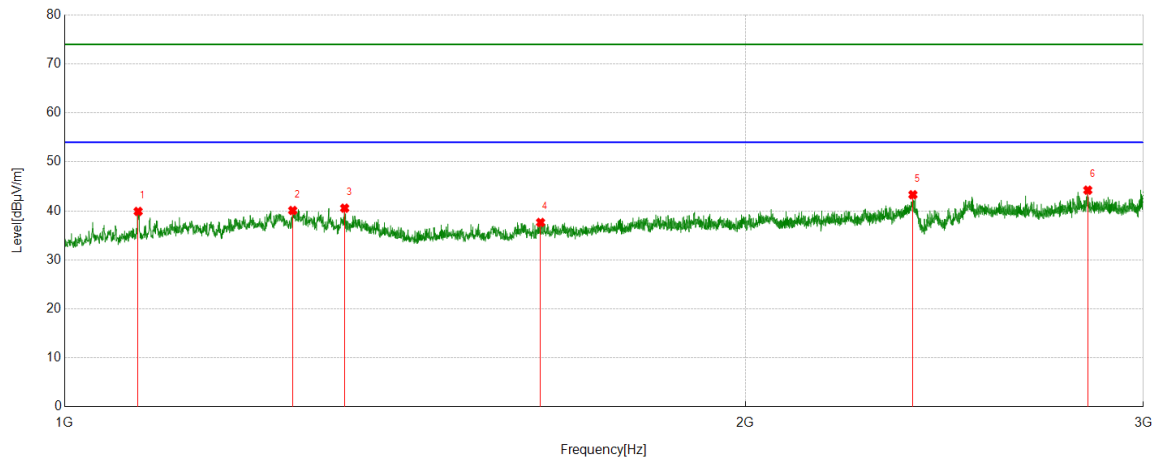
PK Result:

No.	Frequency	Reading Level	Correct Factor	Result	Limit	Margin	Remark
	[MHz]	[dBuV/m]	[dB]	[dBuV/m]	[dBuV/m]	[dB]	
1	1098.1250	43.80	-5.58	38.22	74.00	-35.78	Horizontal
2	1297.0674	46.04	-5.81	40.23	74.00	-33.77	Horizontal
3	1595.4572	44.83	-5.06	39.77	74.00	-34.23	Horizontal
4	1688.2566	46.06	-4.77	41.29	74.00	-32.71	Horizontal
5	2309.5328	43.81	-1.66	42.15	74.00	-31.85	Horizontal
6	2879.2370	46.64	0.28	46.92	74.00	-27.08	Horizontal

- Note: 1. Measurement = Reading Level + Correct Factor.
2. If Peak Result complies with AV limit, AV Result is deemed to comply with AV limit.
3. Test setup: RBW: 1 MHz, VBW: 3 MHz, Sweep time: auto.
4. Peak: Peak detector.
5. For below 3GHz part, filter losses were only considered in the spurious frequency bands and the authorized band was not corrected for Band Reject Filter losses.
6. Only the worst case emission was recorded, if it complies with the limit, the other emissions deemed to comply with the limit.



Test Mode	Channel	Polarization	Verdict
DH5	LCH	Vertical	PASS



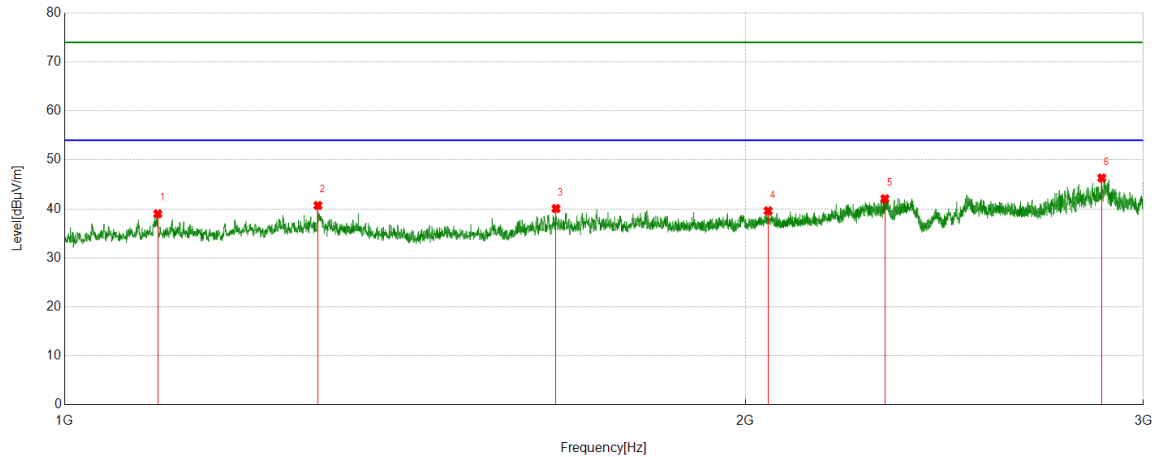
PK Result:

No.	Frequency	Reading Level	Correct Factor	Result	Limit	Margin	Remark
	[MHz]	[dBuV/m]	[dB]	[dBuV/m]	[dBuV/m]	[dB]	
1	1077.4470	45.30	-5.41	39.89	74.00	-34.11	Vertical
2	1261.5421	45.74	-5.66	40.08	74.00	-33.92	Vertical
3	1330.4510	46.23	-5.68	40.55	74.00	-33.45	Vertical
4	1623.5212	42.67	-5.03	37.64	74.00	-36.36	Vertical
5	2372.4821	44.42	-1.12	43.30	74.00	-30.70	Vertical
6	2835.5452	44.22	0.01	44.23	74.00	-29.77	Vertical

- Note: 1. Measurement = Reading Level + Correct Factor.
2. If Peak Result complies with AV limit, AV Result is deemed to comply with AV limit.
3. Test setup: RBW: 1 MHz, VBW: 3 MHz, Sweep time: auto.
4. Peak: Peak detector.
5. For below 3GHz part, filter losses were only considered in the spurious frequency bands and the authorized band was not corrected for Band Reject Filter losses.
6. Only the worst case emission was recorded, if it complies with the limit, the other emissions deemed to comply with the limit.



Test Mode	Channel	Polarization	Verdict
DH5	MCH	Horizontal	PASS



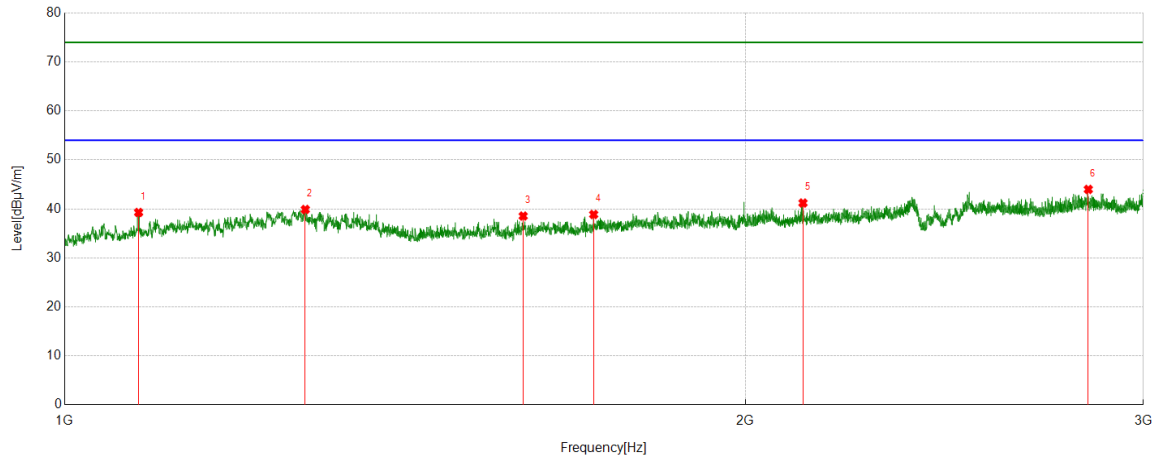
PK Result:

No.	Frequency	Reading Level	Correct Factor	Result	Limit	Margin	Remark
	[MHz]	[dBuV/m]	[dB]	[dBuV/m]	[dBuV/m]	[dB]	
1	1099.5210	44.57	-5.58	38.99	74.00	-35.01	Horizontal
2	1294.0205	46.48	-5.78	40.70	74.00	-33.30	Horizontal
3	1649.0572	45.04	-4.98	40.06	74.00	-33.94	Horizontal
4	2047.2950	41.99	-2.38	39.61	74.00	-34.39	Horizontal
5	2305.6733	43.81	-1.74	42.07	74.00	-31.93	Horizontal
6	2875.7195	46.08	0.23	46.31	74.00	-27.69	Horizontal

- Note: 1. Measurement = Reading Level + Correct Factor.
2. If Peak Result complies with AV limit, AV Result is deemed to comply with AV limit.
3. Test setup: RBW: 1 MHz, VBW: 3 MHz, Sweep time: auto.
4. Peak: Peak detector.
5. For below 3GHz part, filter losses were only considered in the spurious frequency bands and the authorized band was not corrected for Band Reject Filter losses.
6. Only the worst case emission was recorded, if it complies with the limit, the other emissions deemed to comply with the limit.



Test Mode	Channel	Polarization	Verdict
DH5	MCH	Vertical	PASS



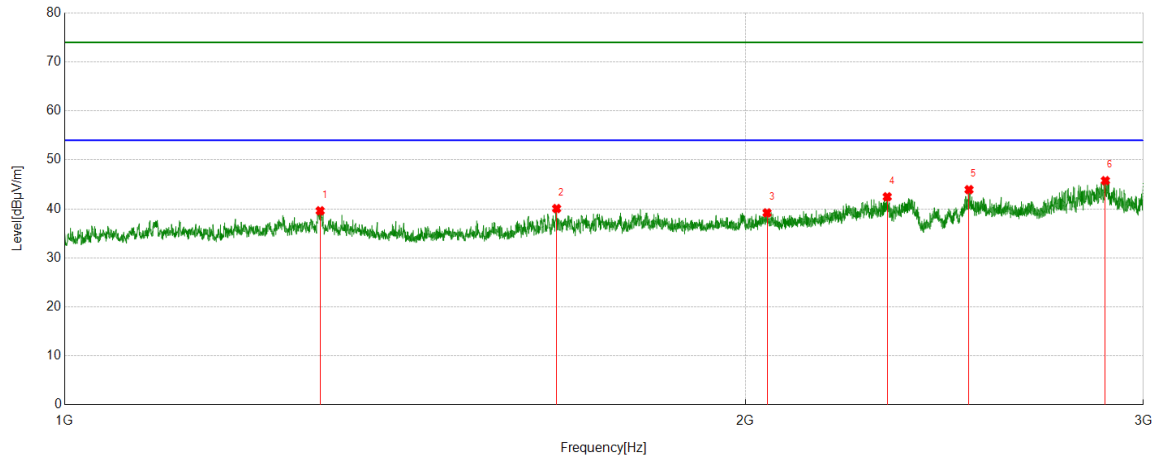
PK Result:

No.	Frequency	Reading Level	Correct Factor	Result	Limit	Margin	Remark
	[MHz]	[dBuV/m]	[dB]	[dBuV/m]	[dBuV/m]	[dB]	
1	1078.1925	44.68	-5.41	39.27	74.00	-34.73	Vertical
2	1277.2375	45.46	-5.58	39.88	74.00	-34.12	Vertical
3	1595.1920	43.61	-5.07	38.54	74.00	-35.46	Vertical
4	1714.3489	43.27	-4.41	38.86	74.00	-35.14	Vertical
5	2121.7621	43.59	-2.39	41.20	74.00	-32.80	Vertical
6	2836.1276	43.94	0.04	43.98	74.00	-30.02	Vertical

- Note: 1. Measurement = Reading Level + Correct Factor.
2. If Peak Result complies with AV limit, AV Result is deemed to comply with AV limit.
3. Test setup: RBW: 1 MHz, VBW: 3 MHz, Sweep time: auto.
4. Peak: Peak detector.
5. For below 3GHz part, filter losses were only considered in the spurious frequency bands and the authorized band was not corrected for Band Reject Filter losses.
6. Only the worst case emission was recorded, if it complies with the limit, the other emissions deemed to comply with the limit.



Test Mode	Channel	Polarization	Verdict
DH5	HCH	Horizontal	PASS



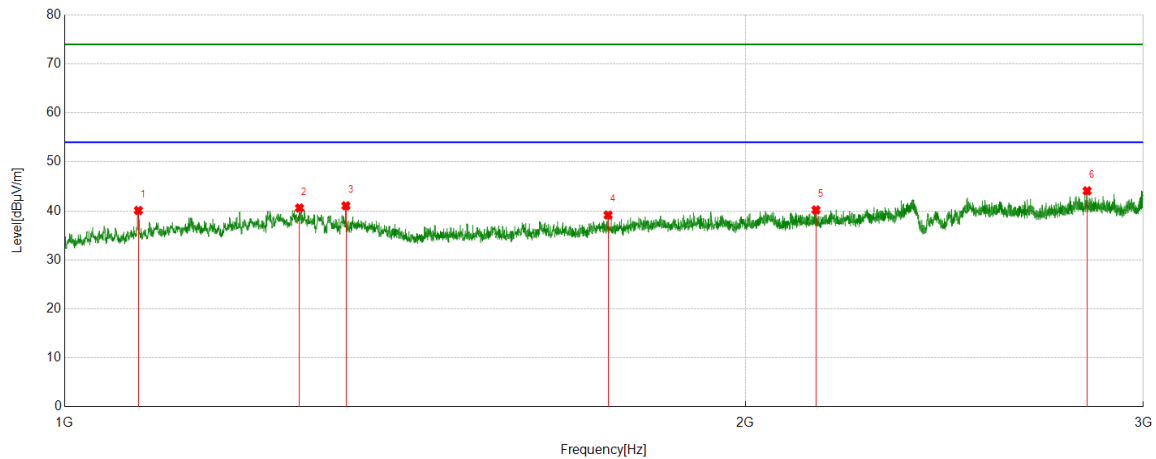
PK Result:

No.	Frequency	Reading Level	Correct Factor	Result	Limit	Margin	Remark
	[MHz]	[dBuV/m]	[dB]	[dBuV/m]	[dBuV/m]	[dB]	
1	1297.2156	45.42	-5.81	39.61	74.00	-34.39	Horizontal
2	1650.7901	45.04	-4.97	40.07	74.00	-33.93	Horizontal
3	2045.4211	41.58	-2.39	39.19	74.00	-34.81	Horizontal
4	2311.2850	44.12	-1.65	42.47	74.00	-31.53	Horizontal
5	2512.4501	44.30	-0.37	43.93	74.00	-30.07	Horizontal
6	2886.7810	45.31	0.45	45.76	74.00	-28.24	Horizontal

- Note: 1. Measurement = Reading Level + Correct Factor.
2. If Peak Result complies with AV limit, AV Result is deemed to comply with AV limit.
3. Test setup: RBW: 1 MHz, VBW: 3 MHz, Sweep time: auto.
4. Peak: Peak detector.
5. For below 3GHz part, filter losses were only considered in the spurious frequency bands and the authorized band was not corrected for Band Reject Filter losses.
6. Only the worst case emission was recorded, if it complies with the limit, the other emissions deemed to comply with the limit.



Test Mode	Channel	Polarization	Verdict
DH5	HCH	Vertical	PASS



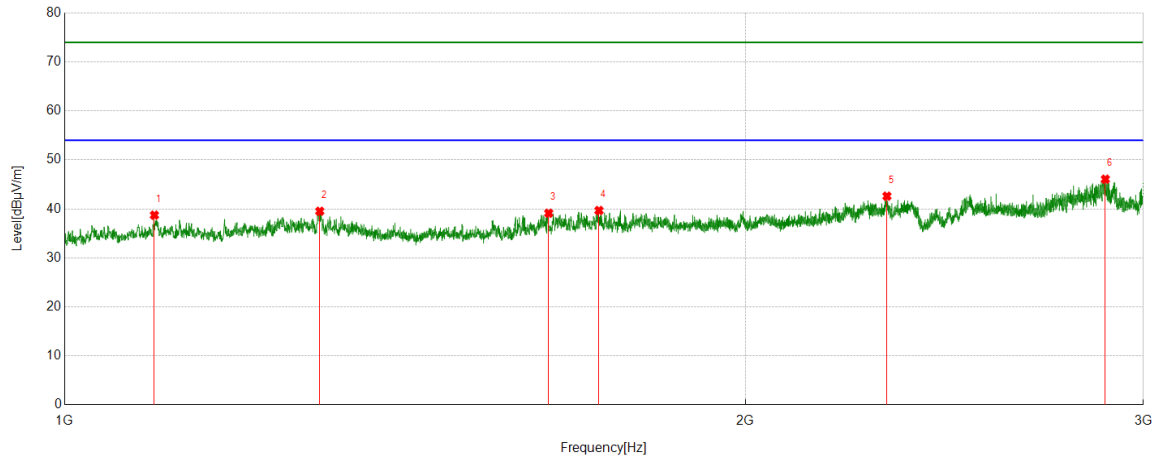
PK Result:

No.	Frequency	Reading Level	Correct Factor	Result	Limit	Margin	Remark
	[MHz]	[dBuV/m]	[dB]	[dBuV/m]	[dBuV/m]	[dB]	
1	1078.4561	45.50	-5.41	40.09	74.00	-33.91	Vertical
2	1270.6510	46.02	-5.43	40.59	74.00	-33.41	Vertical
3	1331.5587	46.72	-5.68	41.04	74.00	-32.96	Vertical
4	1739.2205	43.65	-4.50	39.15	74.00	-34.85	Vertical
5	2149.1359	42.55	-2.36	40.19	74.00	-33.81	Vertical
6	2833.3420	44.13	-0.04	44.09	74.00	-29.91	Vertical

- Note: 1. Measurement = Reading Level + Correct Factor.
2. If Peak Result complies with AV limit, AV Result is deemed to comply with AV limit.
3. Test setup: RBW: 1 MHz, VBW: 3 MHz, Sweep time: auto.
4. Peak: Peak detector.
5. For below 3GHz part, filter losses were only considered in the spurious frequency bands and the authorized band was not corrected for Band Reject Filter losses.
6. Only the worst case emission was recorded, if it complies with the limit, the other emissions deemed to comply with the limit.



Test Mode	Channel	Polarization	Verdict
2DH5	LCH	Horizontal	PASS



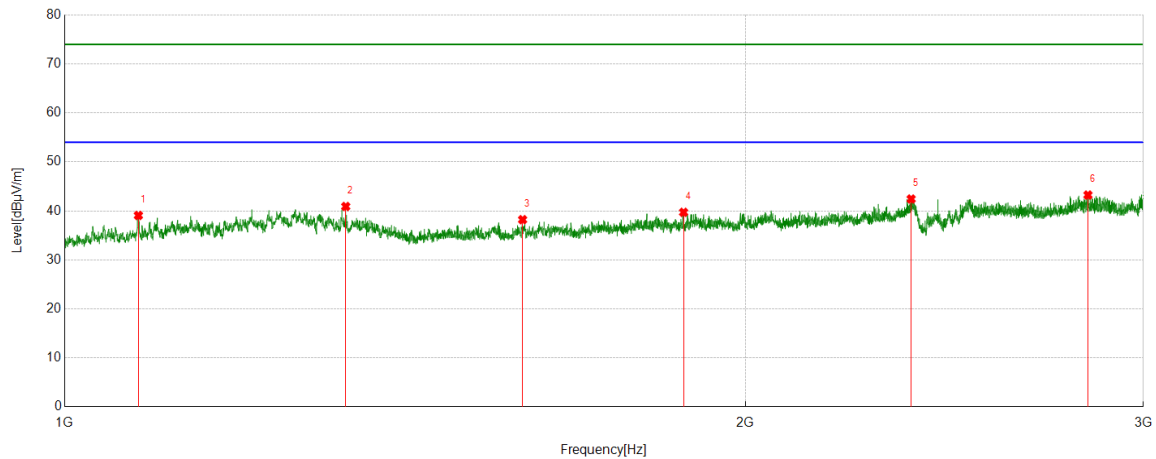
PK Result:

No.	Frequency	Reading Level	Correct Factor	Result	Limit	Margin	Remark
	[MHz]	[dBuV/m]	[dB]	[dBuV/m]	[dBuV/m]	[dB]	
1	1095.1725	44.31	-5.59	38.72	74.00	-35.28	Horizontal
2	1296.2150	45.33	-5.81	39.52	74.00	-34.48	Horizontal
3	1637.2561	44.19	-5.07	39.12	74.00	-34.88	Horizontal
4	1723.5310	44.01	-4.34	39.67	74.00	-34.33	Horizontal
5	2310.8213	44.25	-1.65	42.60	74.00	-31.40	Horizontal
6	2886.2021	45.61	0.45	46.06	74.00	-27.94	Horizontal

- Note: 1. Measurement = Reading Level + Correct Factor.
2. If Peak Result complies with AV limit, AV Result is deemed to comply with AV limit.
3. Test setup: RBW: 1 MHz, VBW: 3 MHz, Sweep time: auto.
4. Peak: Peak detector.
5. For below 3GHz part, filter losses were only considered in the spurious frequency bands and the authorized band was not corrected for Band Reject Filter losses.
6. Only the worst case emission was recorded, if it complies with the limit, the other emissions deemed to comply with the limit.



Test Mode	Channel	Polarization	Verdict
2DH5	LCH	Vertical	PASS



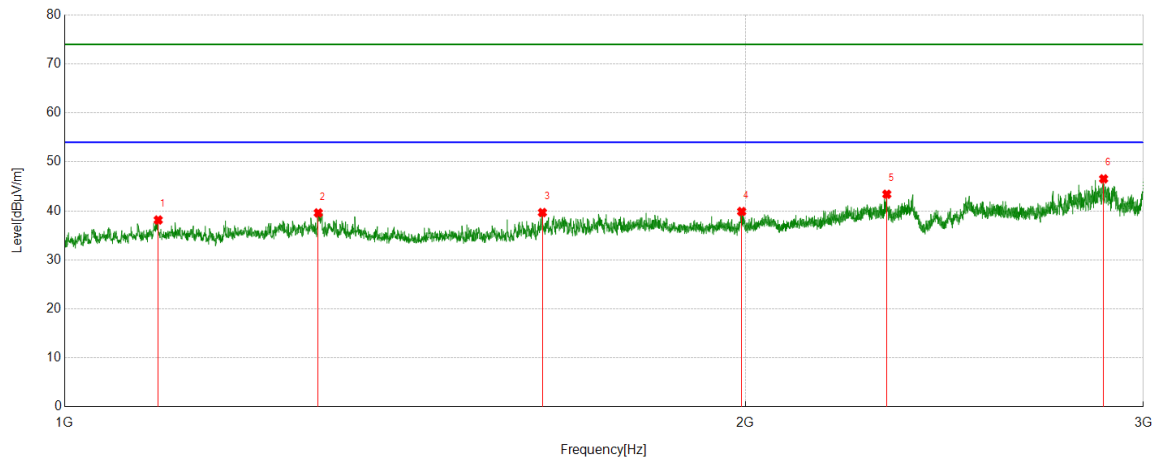
PK Result:

No.	Frequency	Reading Level	Correct Factor	Result	Limit	Margin	Remark
	[MHz]	[dBuV/m]	[dB]	[dBuV/m]	[dBuV/m]	[dB]	
1	1078.3378	44.48	-5.41	39.07	74.00	-34.93	Vertical
2	1331.5419	46.58	-5.68	40.90	74.00	-33.10	Vertical
3	1594.3633	43.25	-5.04	38.21	74.00	-35.79	Vertical
4	1878.5622	43.36	-3.65	39.71	74.00	-34.29	Vertical
5	2368.9280	43.57	-1.14	42.43	74.00	-31.57	Vertical
6	2835.2652	43.22	0.02	43.24	74.00	-30.76	Vertical

- Note: 1. Measurement = Reading Level + Correct Factor.
2. If Peak Result complies with AV limit, AV Result is deemed to comply with AV limit.
3. Test setup: RBW: 1 MHz, VBW: 3 MHz, Sweep time: auto.
4. Peak: Peak detector.
5. For below 3GHz part, filter losses were only considered in the spurious frequency bands and the authorized band was not corrected for Band Reject Filter losses.
6. Only the worst case emission was recorded, if it complies with the limit, the other emissions deemed to comply with the limit.



Test Mode	Channel	Polarization	Verdict
2DH5	MCH	Horizontal	PASS



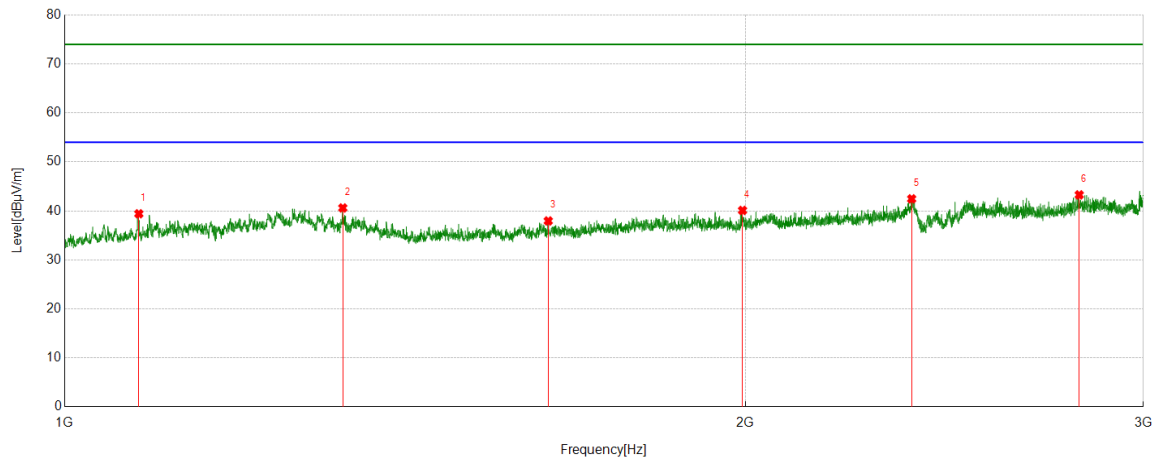
PK Result:

No.	Frequency	Reading Level	Correct Factor	Result	Limit	Margin	Remark
	[MHz]	[dBuV/m]	[dB]	[dBuV/m]	[dBuV/m]	[dB]	
1	1100.5211	43.72	-5.58	38.14	74.00	-35.86	Horizontal
2	1294.6230	45.38	-5.79	39.59	74.00	-34.41	Horizontal
3	1626.3401	44.71	-5.05	39.66	74.00	-34.34	Horizontal
4	1992.0910	42.93	-3.06	39.87	74.00	-34.13	Horizontal
5	2310.0722	45.05	-1.65	43.40	74.00	-30.60	Horizontal
6	2881.3501	46.22	0.32	46.54	74.00	-27.46	Horizontal

- Note: 1. Measurement = Reading Level + Correct Factor.
2. If Peak Result complies with AV limit, AV Result is deemed to comply with AV limit.
3. Test setup: RBW: 1 MHz, VBW: 3 MHz, Sweep time: auto.
4. Peak: Peak detector.
5. For below 3GHz part, filter losses were only considered in the spurious frequency bands and the authorized band was not corrected for Band Reject Filter losses.
6. Only the worst case emission was recorded, if it complies with the limit, the other emissions deemed to comply with the limit.



Test Mode	Channel	Polarization	Verdict
2DH5	MCH	Vertical	PASS



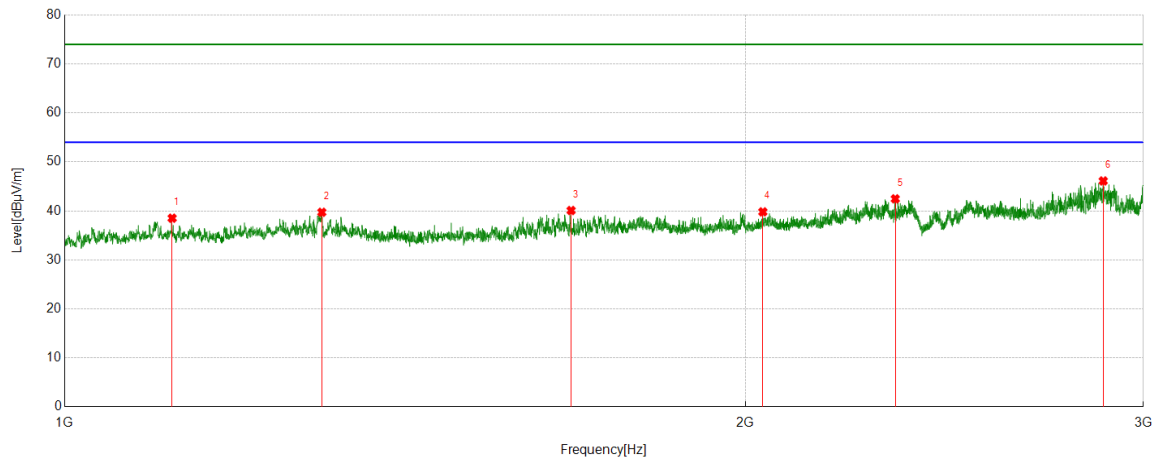
PK Result:

No.	Frequency	Reading Level	Correct Factor	Result	Limit	Margin	Remark
	[MHz]	[dBuV/m]	[dB]	[dBuV/m]	[dBuV/m]	[dB]	
1	1078.5231	44.83	-5.42	39.41	74.00	-34.59	Vertical
2	1327.9022	46.26	-5.66	40.60	74.00	-33.40	Vertical
3	1636.4720	43.02	-5.07	37.95	74.00	-36.05	Vertical
4	1994.4642	43.14	-3.04	40.10	74.00	-33.90	Vertical
5	2369.3738	43.59	-1.13	42.46	74.00	-31.54	Vertical
6	2810.2510	43.50	-0.23	43.27	74.00	-30.73	Vertical

- Note: 1. Measurement = Reading Level + Correct Factor.
2. If Peak Result complies with AV limit, AV Result is deemed to comply with AV limit.
3. Test setup: RBW: 1 MHz, VBW: 3 MHz, Sweep time: auto.
4. Peak: Peak detector.
5. For below 3GHz part, filter losses were only considered in the spurious frequency bands and the authorized band was not corrected for Band Reject Filter losses.
6. Only the worst case emission was recorded, if it complies with the limit, the other emissions deemed to comply with the limit.



Test Mode	Channel	Polarization	Verdict
2DH5	HCH	Horizontal	PASS



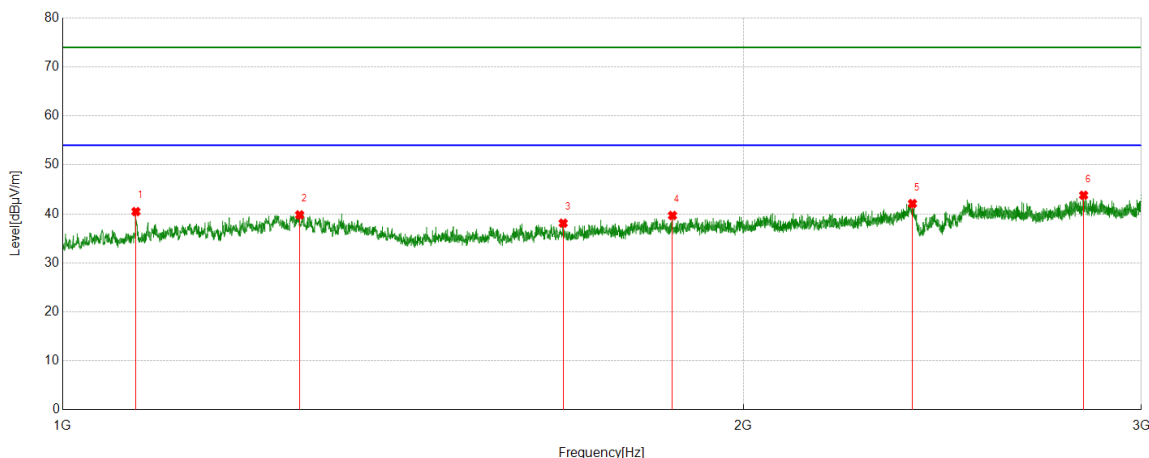
PK Result:

No.	Frequency	Reading Level	Correct Factor	Result	Limit	Margin	Remark
	[MHz]	[dBuV/m]	[dB]	[dBuV/m]	[dBuV/m]	[dB]	
1	1115.3328	44.00	-5.49	38.51	74.00	-35.49	Horizontal
2	1299.5670	45.55	-5.83	39.72	74.00	-34.28	Horizontal
3	1675.4492	44.92	-4.84	40.08	74.00	-33.92	Horizontal
4	2036.2003	42.32	-2.52	39.80	74.00	-34.20	Horizontal
5	2330.2910	44.28	-1.82	42.46	74.00	-31.54	Horizontal
6	2880.1215	45.82	0.29	46.11	74.00	-27.89	Horizontal

- Note: 1. Measurement = Reading Level + Correct Factor.
2. If Peak Result complies with AV limit, AV Result is deemed to comply with AV limit.
3. Test setup: RBW: 1 MHz, VBW: 3 MHz, Sweep time: auto.
4. Peak: Peak detector.
5. For below 3GHz part, filter losses were only considered in the spurious frequency bands and the authorized band was not corrected for Band Reject Filter losses.
6. Only the worst case emission was recorded, if it complies with the limit, the other emissions deemed to comply with the limit.



Test Mode	Channel	Polarization	Verdict
2DH5	HCH	Vertical	PASS



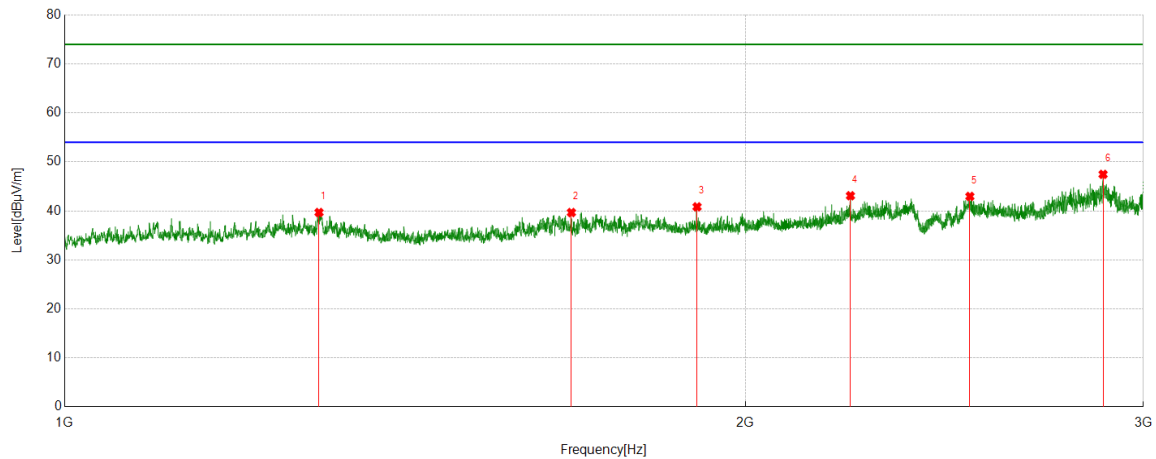
PK Result:

No.	Frequency	Reading Level	Correct Factor	Result	Limit	Margin	Remark
	[MHz]	[dBuV/m]	[dB]	[dBuV/m]	[dBuV/m]	[dB]	
1	1077.4578	45.87	-5.40	40.47	74.00	-33.53	Vertical
2	1273.7649	45.29	-5.49	39.80	74.00	-34.20	Vertical
3	1665.2300	42.97	-4.87	38.10	74.00	-35.90	Vertical
4	1861.3956	43.34	-3.67	39.67	74.00	-34.33	Vertical
5	2376.2650	43.20	-1.10	42.10	74.00	-31.90	Vertical
6	2828.6753	43.93	-0.12	43.81	74.00	-30.19	Vertical

- Note: 1. Measurement = Reading Level + Correct Factor.
2. If Peak Result complies with AV limit, AV Result is deemed to comply with AV limit.
3. Test setup: RBW: 1 MHz, VBW: 3 MHz, Sweep time: auto.
4. Peak: Peak detector.
5. For below 3GHz part, filter losses were only considered in the spurious frequency bands and the authorized band was not corrected for Band Reject Filter losses.
6. Only the worst case emission was recorded, if it complies with the limit, the other emissions deemed to comply with the limit.



Test Mode	Channel	Polarization	Verdict
3DH5	LCH	Horizontal	PASS



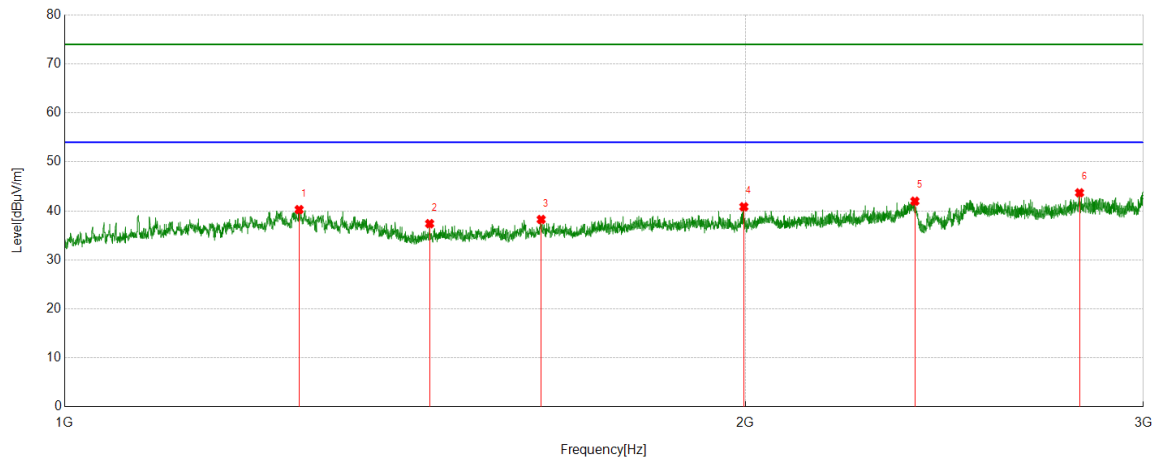
PK Result:

No.	Frequency	Reading Level	Correct Factor	Result	Limit	Margin	Remark
	[MHz]	[dBuV/m]	[dB]	[dBuV/m]	[dBuV/m]	[dB]	
1	1295.2575	45.48	-5.80	39.68	74.00	-34.32	Horizontal
2	1675.1455	44.50	-4.84	39.66	74.00	-34.34	Horizontal
3	1904.2625	44.13	-3.30	40.83	74.00	-33.17	Horizontal
4	2226.4250	45.28	-2.19	43.09	74.00	-30.91	Horizontal
5	2514.0254	43.31	-0.36	42.95	74.00	-31.05	Horizontal
6	2879.2250	47.17	0.29	47.46	74.00	-26.54	Horizontal

- Note: 1. Measurement = Reading Level + Correct Factor.
2. If Peak Result complies with AV limit, AV Result is deemed to comply with AV limit.
3. Test setup: RBW: 1 MHz, VBW: 3 MHz, Sweep time: auto.
4. Peak: Peak detector.
5. For below 3GHz part, filter losses were only considered in the spurious frequency bands and the authorized band was not corrected for Band Reject Filter losses.
6. Only the worst case emission was recorded, if it complies with the limit, the other emissions deemed to comply with the limit.



Test Mode	Channel	Polarization	Verdict
3DH5	LCH	Vertical	PASS



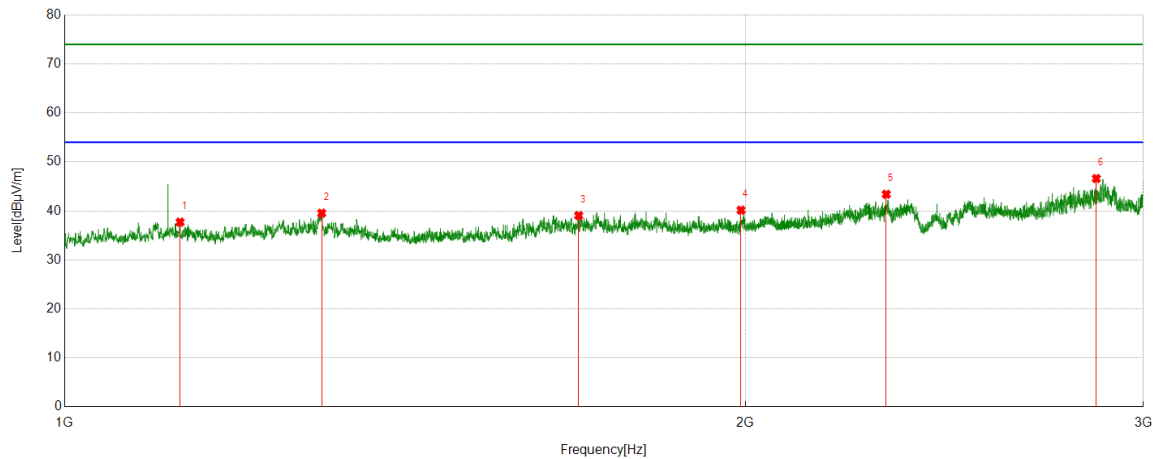
PK Result:

No.	Frequency	Reading Level	Correct Factor	Result	Limit	Margin	Remark
	[MHz]	[dBuV/m]	[dB]	[dBuV/m]	[dBuV/m]	[dB]	
1	1269.6315	45.69	-5.43	40.26	74.00	-33.74	Vertical
2	1450.1045	43.12	-5.73	37.39	74.00	-36.61	Vertical
3	1624.6715	43.29	-5.04	38.25	74.00	-35.75	Vertical
4	1997.2510	43.86	-3.02	40.84	74.00	-33.16	Vertical
5	2377.3622	43.07	-1.09	41.98	74.00	-32.02	Vertical
6	2811.3905	43.92	-0.23	43.69	74.00	-30.31	Vertical

- Note: 1. Measurement = Reading Level + Correct Factor.
2. If Peak Result complies with AV limit, AV Result is deemed to comply with AV limit.
3. Test setup: RBW: 1 MHz, VBW: 3 MHz, Sweep time: auto.
4. Peak: Peak detector.
5. For below 3GHz part, filter losses were only considered in the spurious frequency bands and the authorized band was not corrected for Band Reject Filter losses.
6. Only the worst case emission was recorded, if it complies with the limit, the other emissions deemed to comply with the limit.



Test Mode	Channel	Polarization	Verdict
3DH5	MCH	Horizontal	PASS



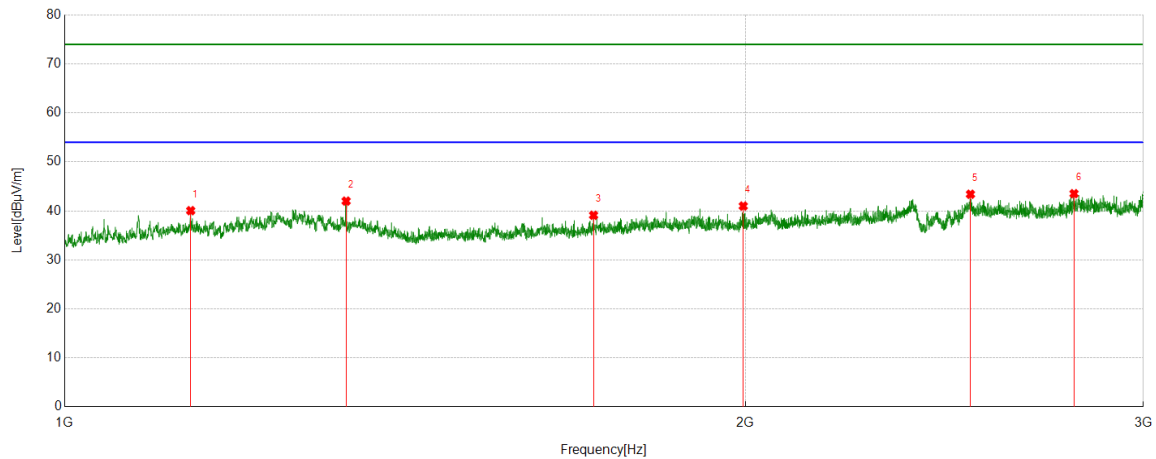
PK Result:

No.	Frequency	Reading Level	Correct Factor	Result	Limit	Margin	Remark
	[MHz]	[dBuV/m]	[dB]	[dBuV/m]	[dBuV/m]	[dB]	
1	1124.6350	43.18	-5.47	37.71	74.00	-36.29	Horizontal
2	1299.4105	45.36	-5.83	39.53	74.00	-34.47	Horizontal
3	1688.7732	43.81	-4.77	39.04	74.00	-34.96	Horizontal
4	1991.5562	43.22	-3.07	40.15	74.00	-33.85	Horizontal
5	2309.4336	45.06	-1.67	43.39	74.00	-30.61	Horizontal
6	2859.6554	46.48	0.13	46.61	74.00	-27.39	Horizontal

- Note: 1. Measurement = Reading Level + Correct Factor.
2. If Peak Result complies with AV limit, AV Result is deemed to comply with AV limit.
3. Test setup: RBW: 1 MHz, VBW: 3 MHz, Sweep time: auto.
4. Peak: Peak detector.
5. For below 3GHz part, filter losses were only considered in the spurious frequency bands and the authorized band was not corrected for Band Reject Filter losses.
6. Only the worst case emission was recorded, if it complies with the limit, the other emissions deemed to comply with the limit.



Test Mode	Channel	Polarization	Verdict
3DH5	MCH	Vertical	PASS



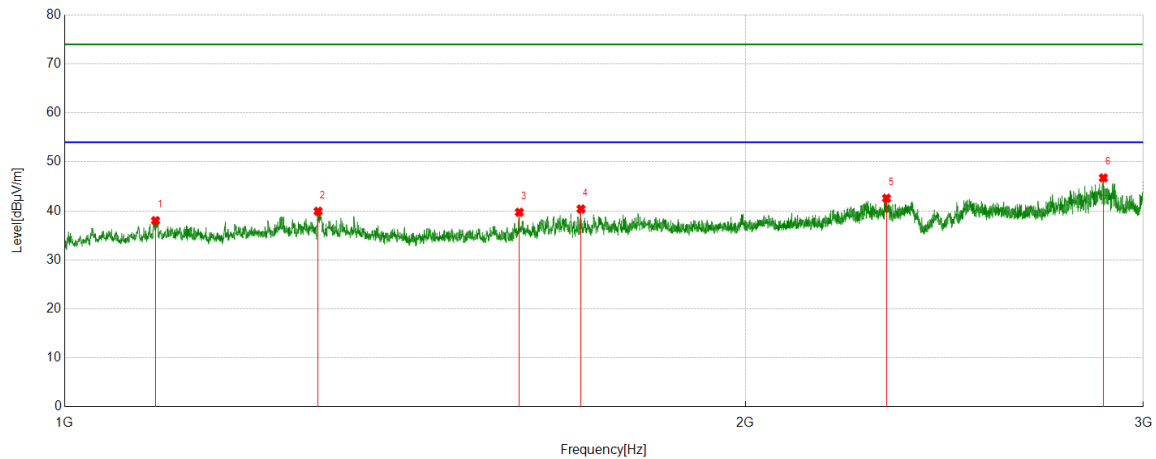
PK Result:

No.	Frequency	Reading Level	Correct Factor	Result	Limit	Margin	Remark
	[MHz]	[dBuV/m]	[dB]	[dBuV/m]	[dBuV/m]	[dB]	
1	1137.5543	45.57	-5.52	40.05	74.00	-33.95	Vertical
2	1332.1264	47.68	-5.68	42.00	74.00	-32.00	Vertical
3	1713.8750	43.53	-4.42	39.11	74.00	-34.89	Vertical
4	1996.2043	44.02	-3.03	40.99	74.00	-33.01	Vertical
5	2515.7745	43.75	-0.35	43.40	74.00	-30.60	Vertical
6	2795.4556	43.81	-0.29	43.52	74.00	-30.48	Vertical

- Note: 1. Measurement = Reading Level + Correct Factor.
2. If Peak Result complies with AV limit, AV Result is deemed to comply with AV limit.
3. Test setup: RBW: 1 MHz, VBW: 3 MHz, Sweep time: auto.
4. Peak: Peak detector.
5. For below 3GHz part, filter losses were only considered in the spurious frequency bands and the authorized band was not corrected for Band Reject Filter losses.
6. Only the worst case emission was recorded, if it complies with the limit, the other emissions deemed to comply with the limit.



Test Mode	Channel	Polarization	Verdict
3DH5	HCH	Horizontal	PASS



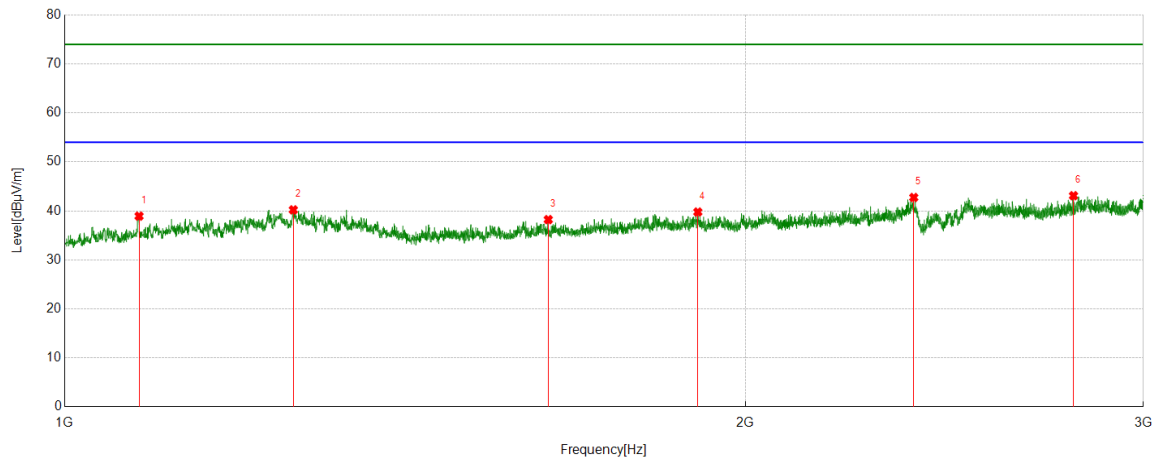
PK Result:

No.	Frequency	Reading Level	Correct Factor	Result	Limit	Margin	Remark
	[MHz]	[dBuV/m]	[dB]	[dBuV/m]	[dBuV/m]	[dB]	
1	1097.5445	43.59	-5.58	38.01	74.00	-35.99	Horizontal
2	1294.5690	45.71	-5.79	39.92	74.00	-34.08	Horizontal
3	1589.1011	44.71	-4.99	39.72	74.00	-34.28	Horizontal
4	1692.0430	45.15	-4.76	40.39	74.00	-33.61	Horizontal
5	2309.5721	44.24	-1.66	42.58	74.00	-31.42	Horizontal
6	2880.3215	46.43	0.30	46.73	74.00	-27.27	Horizontal

- Note: 1. Measurement = Reading Level + Correct Factor.
2. If Peak Result complies with AV limit, AV Result is deemed to comply with AV limit.
3. Test setup: RBW: 1 MHz, VBW: 3 MHz, Sweep time: auto.
4. Peak: Peak detector.
5. For below 3GHz part, filter losses were only considered in the spurious frequency bands and the authorized band was not corrected for Band Reject Filter losses.
6. Only the worst case emission was recorded, if it complies with the limit, the other emissions deemed to comply with the limit.



Test Mode	Channel	Polarization	Verdict
3DH5	HCH	Vertical	PASS



PK Result:

No.	Frequency	Reading Level	Correct Factor	Result	Limit	Margin	Remark
	[MHz]	[dBuV/m]	[dB]	[dBuV/m]	[dBuV/m]	[dB]	
1	1078.3475	44.35	-5.42	38.93	74.00	-35.07	Vertical
2	1262.5625	45.85	-5.64	40.21	74.00	-33.79	Vertical
3	1636.5330	43.29	-5.07	38.22	74.00	-35.78	Vertical
4	1905.5707	43.07	-3.30	39.77	74.00	-34.23	Vertical
5	2374.3780	43.85	-1.11	42.74	74.00	-31.26	Vertical
6	2794.348	43.40	-0.30	43.10	74.00	-30.90	Vertical

- Note: 1. Measurement = Reading Level + Correct Factor.
2. If Peak Result complies with AV limit, AV Result is deemed to comply with AV limit.
3. Test setup: RBW: 1 MHz, VBW: 3 MHz, Sweep time: auto.
4. Peak: Peak detector.
5. For below 3GHz part, filter losses were only considered in the spurious frequency bands and the authorized band was not corrected for Band Reject Filter losses.
6. Only the worst case emission was recorded, if it complies with the limit, the other emissions deemed to comply with the limit.

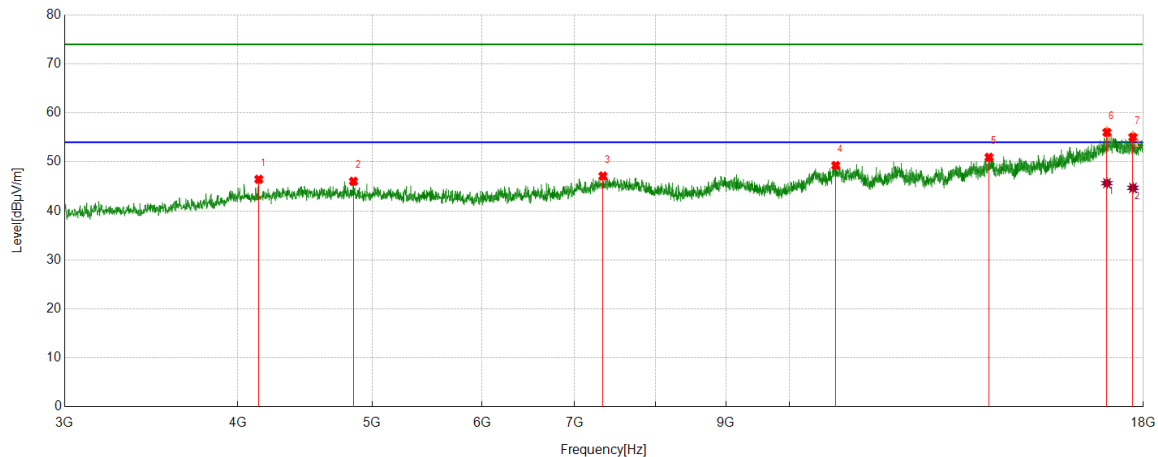


Part 2: 3GHz~18GHz

Antenna Type 2: External Dipole Antenna

HARMONICS AND SPURIOUS EMISSIONS

Test Mode	Channel	Polarization	Verdict
DH5	LCH	Horizontal	PASS



PK Result:

No.	Frequency	Reading Level	Correct Factor	Result	Limit	Margin	Remark
	[MHz]	[dBuV/m]	[dB]	[dBuV/m]	[dBuV/m]	[dB]	
1	4142.0178	41.71	4.74	46.45	74.00	-27.55	Horizontal
2	4847.1059	40.58	5.46	46.04	74.00	-27.96	Horizontal
3	7335.5419	38.52	8.60	47.12	74.00	-26.88	Horizontal
4	10799.0999	37.23	12.04	49.27	74.00	-24.73	Horizontal
5	13930.7413	36.49	14.45	50.94	74.00	-23.06	Horizontal
6	16944.2430	37.82	18.41	56.23	74.00	-17.77	Horizontal
7	17692.4616	37.39	17.91	55.30	74.00	-18.70	Horizontal

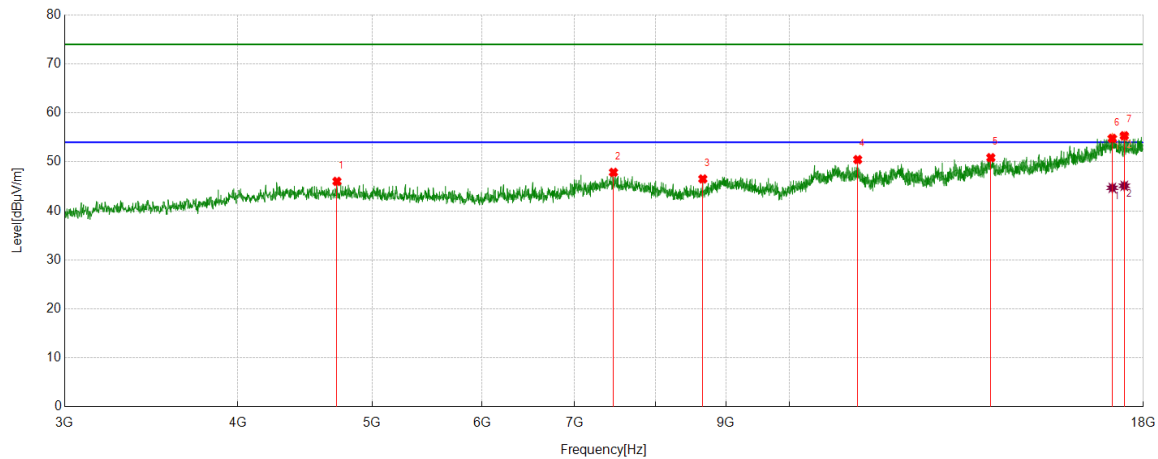
AV Result:

No.	Frequency	Reading Level	Correct Factor	Result	Limit	Margin	Remark
	[MHz]	[dBuV/m]	[dB]	[dBuV/m]	[dBuV/m]	[dB]	
1	16944.2430	27.25	18.41	45.66	54.00	-8.34	Horizontal
2	17692.4616	26.79	17.91	44.70	54.00	-9.30	Horizontal

- Note: 1. Measurement = Reading Level + Correct Factor.
2. If peak result complies with AV limit, AV Result is deemed to comply with AV limit.
3. Peak result: Peak detector, RBW: 1 MHz, VBW: 3 MHz.
4. Average result: Peak detector, RBW: 1 MHz, VBW: 1/T MHz(refer to clause 7.1.).
5. For above 3GHz part, filter losses were only considered in the spurious frequency bands and the authorized band was not corrected for HPF losses.
6. Only the worst case emission was recorded, if it complies with the limit, the other emissions deemed to comply with the limit.



Test Mode	Channel	Polarization	Verdict
DH5	LCH	Vertical	PASS



PK Result:

No.	Frequency	Reading Level	Correct Factor	Result	Limit	Margin	Remark
	[MHz]	[dBuV/m]	[dB]	[dBuV/m]	[dBuV/m]	[dB]	
1	4715.8395	40.43	5.59	46.02	74.00	-27.98	Vertical
2	7464.9331	39.18	8.68	47.86	74.00	-26.14	Vertical
3	8659.4574	39.24	7.28	46.52	74.00	-27.48	Vertical
4	11200.4001	38.54	11.93	50.47	74.00	-23.53	Vertical
5	13971.9965	37.02	13.84	50.86	74.00	-23.14	Vertical
6	17096.1370	36.6	18.23	54.83	74.00	-19.17	Vertical
7	17439.3049	37.3	17.87	55.17	74.00	-18.83	Vertical

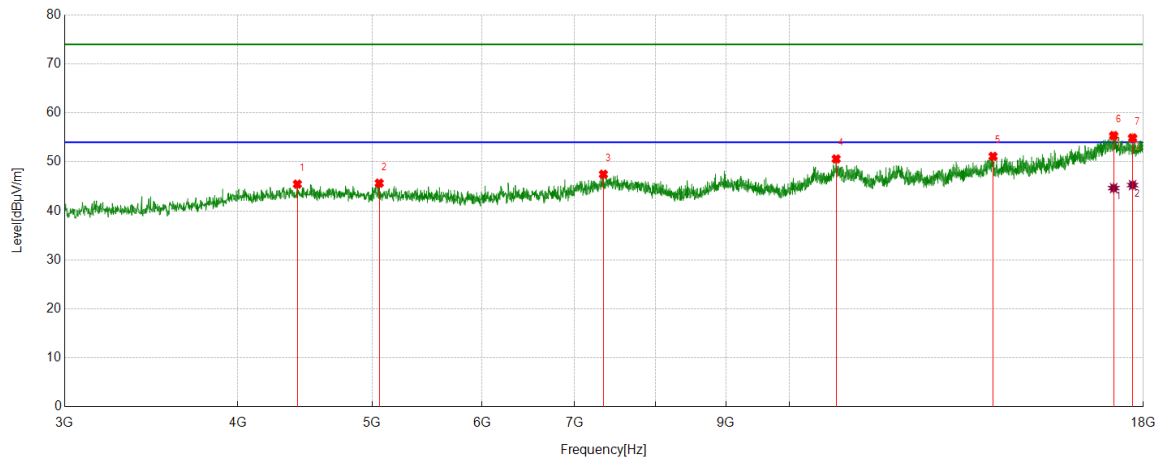
AV Result:

No.	Frequency	Reading Level	Correct Factor	Result	Limit	Margin	Remark
	[MHz]	[dBuV/m]	[dB]	[dBuV/m]	[dBuV/m]	[dB]	
1	17096.1370	26.48	18.23	44.71	54.00	-9.29	Vertical
2	17439.3049	27.25	17.87	45.12	54.00	-8.88	Vertical

- Note: 1. Measurement = Reading Level + Correct Factor.
2. If peak result complies with AV limit, AV Result is deemed to comply with AV limit.
3. Peak result: Peak detector, RBW: 1 MHz, VBW: 3 MHz.
4. Average result: Peak detector, RBW: 1 MHz, VBW: 1/T MHz(refer to clause 7.1.).
5. For above 3GHz part, filter losses were only considered in the spurious frequency bands and the authorized band was not corrected for HPF losses.
6. Only the worst case emission was recorded, if it complies with the limit, the other emissions deemed to comply with the limit.



Test Mode	Channel	Polarization	Verdict
DH5	MCH	Horizontal	PASS



PK Result:

No.	Frequency	Reading Level	Correct Factor	Result	Limit	Margin	Remark
	[MHz]	[dBuV/m]	[dB]	[dBuV/m]	[dBuV/m]	[dB]	
1	4415.802	40.21	5.25	45.46	74.00	-28.54	Horizontal
2	5059.0074	40.30	5.36	45.66	74.00	-28.34	Horizontal
3	7341.1676	38.92	8.56	47.48	74.00	-26.52	Horizontal
4	10806.6008	38.45	12.15	50.60	74.00	-23.40	Horizontal
5	14022.6278	36.78	14.35	51.13	74.00	-22.87	Horizontal
6	17135.5169	37.08	18.14	55.22	74.00	-18.78	Horizontal
7	17681.2102	36.84	17.97	54.81	74.00	-19.19	Horizontal

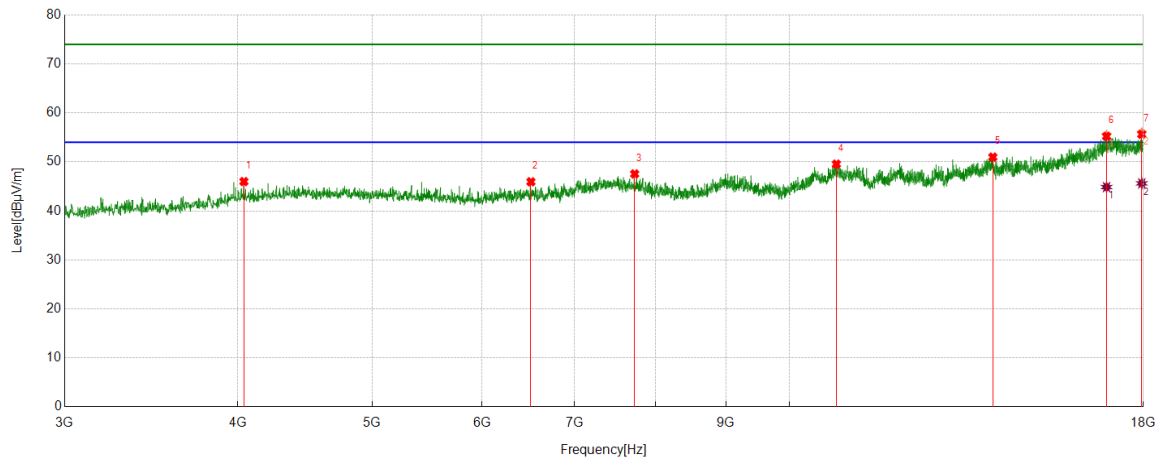
AV Result:

No.	Frequency	Reading Level	Correct Factor	Result	Limit	Margin	Remark
	[MHz]	[dBuV/m]	[dB]	[dBuV/m]	[dBuV/m]	[dB]	
1	17135.5169	26.51	18.14	44.65	54.00	-9.35	Horizontal
2	17681.2102	27.30	17.97	45.27	54.00	-8.73	Horizontal

- Note: 1. Measurement = Reading Level + Correct Factor.
2. If peak result complies with AV limit, AV Result is deemed to comply with AV limit.
3. Peak result: Peak detector, RBW: 1 MHz, VBW: 3 MHz.
4. Average result: Peak detector, RBW: 1 MHz, VBW: 1/T MHz(refer to clause 7.1.).
5. For above 3GHz part, filter losses were only considered in the spurious frequency bands and the authorized band was not corrected for HPF losses.
6. Only the worst case emission was recorded, if it complies with the limit, the other emissions deemed to comply with the limit.



Test Mode	Channel	Polarization	Verdict
DH5	MCH	Vertical	PASS



PK Result:

No.	Frequency	Reading Level	Correct Factor	Result	Limit	Margin	Remark
	[MHz]	[dBuV/m]	[dB]	[dBuV/m]	[dBuV/m]	[dB]	
1	4040.7551	41.78	4.21	45.99	74.00	-28.01	Vertical
2	6508.5636	38.60	7.34	45.94	74.00	-28.06	Vertical
3	7733.0916	39.31	8.23	47.54	74.00	-26.46	Vertical
4	10810.3513	37.34	12.21	49.55	74.00	-24.45	Vertical
5	14018.8774	36.76	14.22	50.98	74.00	-23.02	Vertical
6	16932.9916	37.03	18.39	55.42	74.00	-18.58	Vertical
7	17953.1191	37.38	18.54	55.92	74.00	-18.08	Vertical

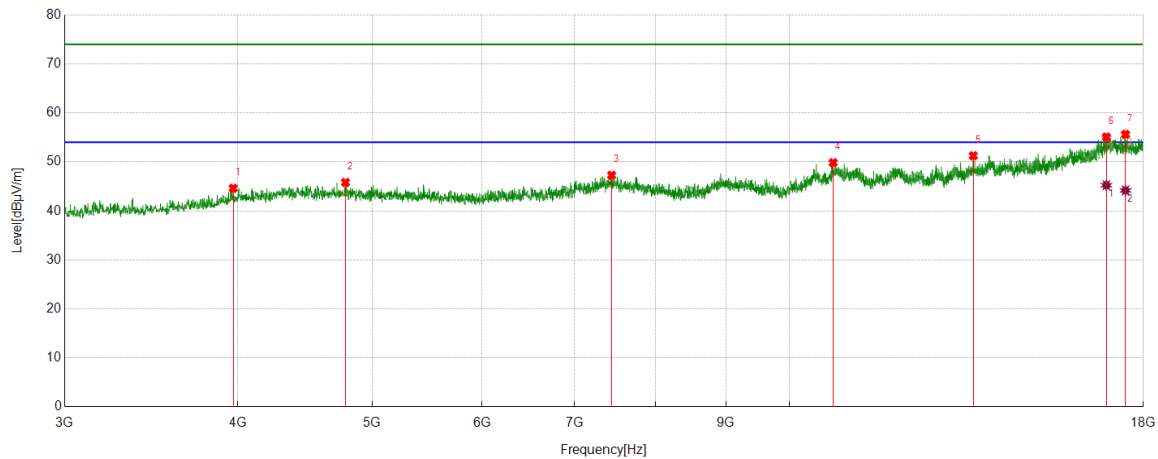
AV Result:

No.	Frequency	Reading Level	Correct Factor	Result	Limit	Margin	Remark
	[MHz]	[dBuV/m]	[dB]	[dBuV/m]	[dBuV/m]	[dB]	
1	16932.9916	26.47	18.39	44.86	54.00	-9.14	Vertical
2	17953.1191	27.08	18.54	45.62	54.00	-8.38	Vertical

- Note: 1. Measurement = Reading Level + Correct Factor.
2. If peak result complies with AV limit, AV Result is deemed to comply with AV limit.
3. Peak result: Peak detector, RBW: 1 MHz, VBW: 3 MHz.
4. Average result: Peak detector, RBW: 1 MHz, VBW: 1/T MHz(refer to clause 7.1.).
5. For above 3GHz part, filter losses were only considered in the spurious frequency bands and the authorized band was not corrected for HPF losses.
6. Only the worst case emission was recorded, if it complies with the limit, the other emissions deemed to comply with the limit.



Test Mode	Channel	Polarization	Verdict
DH5	HCH	Horizontal	PASS



PK Result:

No.	Frequency	Reading Level	Correct Factor	Result	Limit	Margin	Remark
	[MHz]	[dBuV/m]	[dB]	[dBuV/m]	[dBuV/m]	[dB]	
1	3969.4962	40.26	4.36	44.62	74.00	-29.38	Horizontal
2	4783.3479	39.97	5.84	45.81	74.00	-28.19	Horizontal
3	7442.4303	38.62	8.65	47.27	74.00	-26.73	Horizontal
4	10752.219	37.68	12.17	49.85	74.00	-24.15	Horizontal
5	13570.6963	38.42	12.84	51.26	74.00	-22.74	Horizontal
6	16929.2412	36.61	18.31	54.92	74.00	-19.08	Horizontal
7	17474.9344	37.84	17.79	55.63	74.00	-18.37	Horizontal

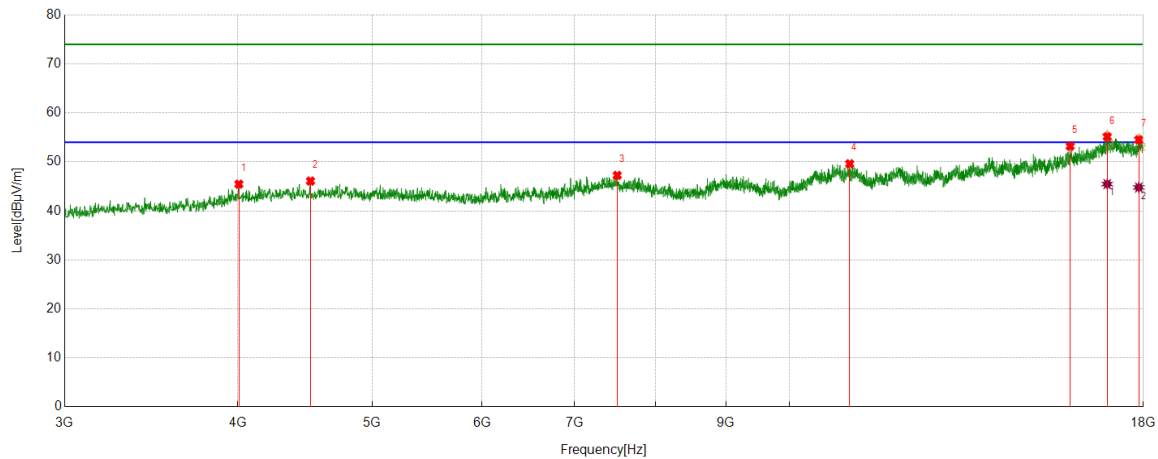
AV Result:

No.	Frequency	Reading Level	Correct Factor	Result	Limit	Margin	Remark
	[MHz]	[dBuV/m]	[dB]	[dBuV/m]	[dBuV/m]	[dB]	
1	16929.2412	26.93	18.31	45.24	54.00	-8.76	Horizontal
2	17474.9344	26.39	17.79	44.18	54.00	-9.82	Horizontal

- Note: 1. Measurement = Reading Level + Correct Factor.
2. If peak result complies with AV limit, AV Result is deemed to comply with AV limit.
3. Peak result: Peak detector, RBW: 1 MHz, VBW: 3 MHz.
4. Average result: Peak detector, RBW: 1 MHz, VBW: 1/T MHz(refer to clause 7.1.).
5. For above 3GHz part, filter losses were only considered in the spurious frequency bands and the authorized band was not corrected for HPF losses.
6. Only the worst case emission was recorded, if it complies with the limit, the other emissions deemed to comply with the limit.



Test Mode	Channel	Polarization	Verdict
DH5	HCH	Vertical	PASS



PK Result:

No.	Frequency	Reading Level	Correct Factor	Result	Limit	Margin	Remark
	[MHz]	[dBuV/m]	[dB]	[dBuV/m]	[dBuV/m]	[dB]	
1	4007.0009	40.93	4.53	45.46	74.00	-28.54	Vertical
2	4513.3142	40.58	5.51	46.09	74.00	-27.91	Vertical
3	7511.814	38.61	8.64	47.25	74.00	-26.75	Vertical
4	11052.2565	37.43	12.18	49.61	74.00	-24.39	Vertical
5	15940.9926	37.23	15.98	53.21	74.00	-20.79	Vertical
6	16951.7440	37	18.40	55.40	74.00	-18.60	Vertical
7	17864.9831	36.24	18.42	54.66	74.00	-19.34	Vertical

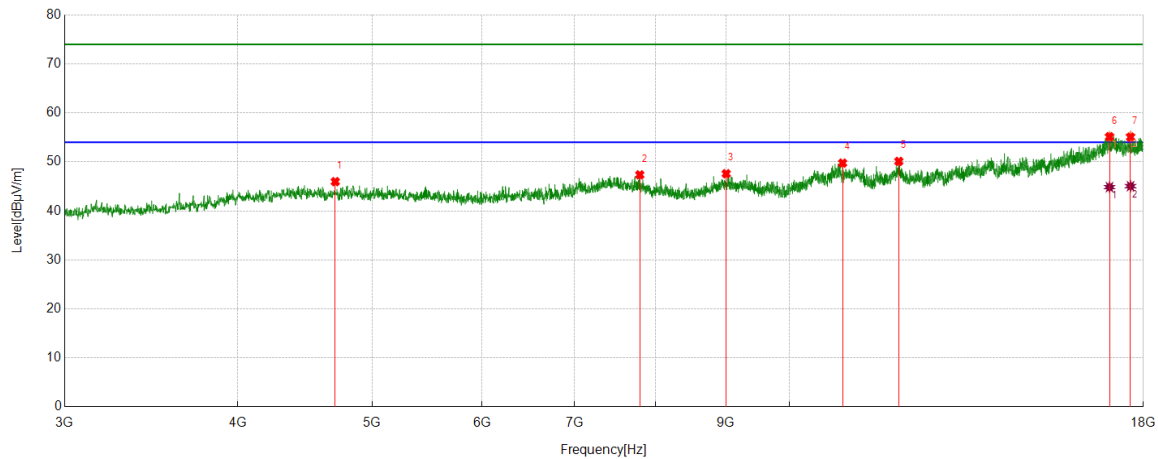
AV Result:

No.	Frequency	Reading Level	Correct Factor	Result	Limit	Margin	Remark
	[MHz]	[dBuV/m]	[dB]	[dBuV/m]	[dBuV/m]	[dB]	
1	16951.7440	27.07	18.40	45.47	54.00	-8.53	Vertical
2	17864.9831	26.36	18.42	44.78	54.00	-9.22	Vertical

- Note: 1. Measurement = Reading Level + Correct Factor.
2. If peak result complies with AV limit, AV Result is deemed to comply with AV limit.
3. Peak result: Peak detector, RBW: 1 MHz, VBW: 3 MHz.
4. Average result: Peak detector, RBW: 1 MHz, VBW: 1/T MHz(refer to clause 7.1.).
5. For above 3GHz part, filter losses were only considered in the spurious frequency bands and the authorized band was not corrected for HPF losses.
6. Only the worst case emission was recorded, if it complies with the limit, the other emissions deemed to comply with the limit.



Test Mode	Channel	Polarization	Verdict
2DH5	LCH	Horizontal	PASS



PK Result:

No.	Frequency	Reading Level	Correct Factor	Result	Limit	Margin	Remark
	[MHz]	[dBuV/m]	[dB]	[dBuV/m]	[dBuV/m]	[dB]	
1	4702.7128	40.36	5.61	45.97	74.00	-28.03	Horizontal
2	7798.7248	39.28	8.08	47.36	74.00	-26.64	Horizontal
3	9002.6253	38.49	9.10	47.59	74.00	-26.41	Horizontal
4	10922.8654	37.40	12.36	49.76	74.00	-24.24	Horizontal
5	11991.749	37.21	12.90	50.11	74.00	-23.89	Horizontal
6	17017.3772	36.83	18.39	55.22	74.00	-18.78	Horizontal
7	17621.2027	37.75	17.57	55.32	74.00	-18.68	Horizontal

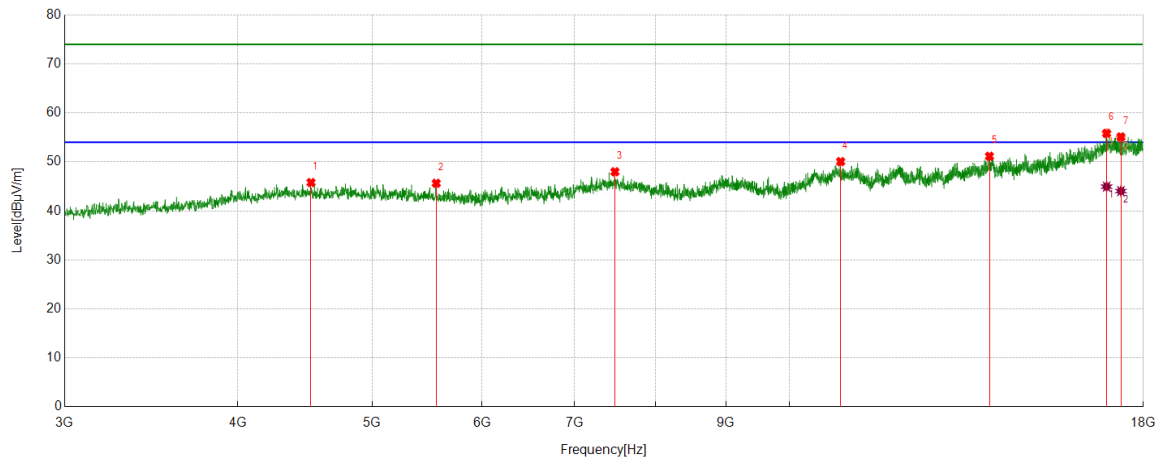
AV Result:

No.	Frequency	Reading Level	Correct Factor	Result	Limit	Margin	Remark
	[MHz]	[dBuV/m]	[dB]	[dBuV/m]	[dBuV/m]	[dB]	
1	17017.3772	26.46	18.39	44.85	54.00	-9.15	Horizontal
2	17621.2027	27.48	17.57	45.05	54.00	-8.95	Horizontal

- Note: 1. Measurement = Reading Level + Correct Factor.
2. If peak result complies with AV limit, AV Result is deemed to comply with AV limit.
3. Peak result: Peak detector, RBW: 1 MHz, VBW: 3 MHz.
4. Average result: Peak detector, RBW: 1 MHz, VBW: 1/T MHz(refer to clause 7.1.).
5. For above 3GHz part, filter losses were only considered in the spurious frequency bands and the authorized band was not corrected for HPF losses.
6. Only the worst case emission was recorded, if it complies with the limit, the other emissions deemed to comply with the limit.



Test Mode	Channel	Polarization	Verdict
2DH5	LCH	Vertical	PASS



PK Result:

No.	Frequency	Reading Level	Correct Factor	Result	Limit	Margin	Remark
	[MHz]	[dBuV/m]	[dB]	[dBuV/m]	[dBuV/m]	[dB]	
1	4517.0646	40.33	5.46	45.79	74.00	-28.21	Vertical
2	5561.5702	40.37	5.27	45.64	74.00	-28.36	Vertical
3	7483.6855	39.23	8.75	47.98	74.00	-26.02	Vertical
4	10887.2359	37.82	12.24	50.06	74.00	-23.94	Vertical
5	13940.1175	36.77	14.38	51.15	74.00	-22.85	Vertical
6	16934.8669	37.38	18.41	55.79	74.00	-18.21	Vertical
7	17341.7927	37.19	17.67	54.86	74.00	-19.14	Vertical

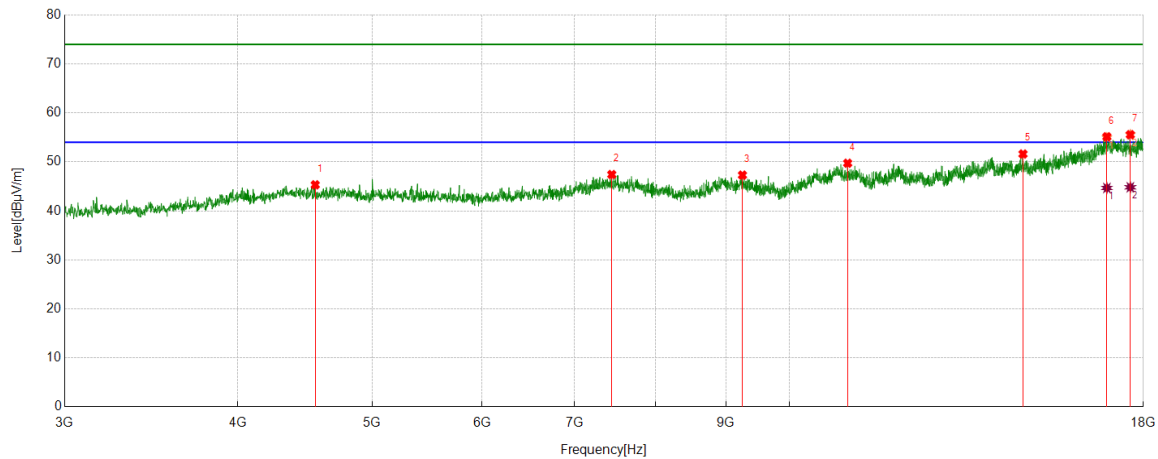
AV Result:

No.	Frequency	Reading Level	Correct Factor	Result	Limit	Margin	Remark
	[MHz]	[dBuV/m]	[dB]	[dBuV/m]	[dBuV/m]	[dB]	
1	16934.8669	26.54	18.41	44.95	54.00	-9.05	Vertical
2	17341.7927	26.37	17.67	44.04	54.00	-9.96	Vertical

- Note: 1. Measurement = Reading Level + Correct Factor.
2. If peak result complies with AV limit, AV Result is deemed to comply with AV limit.
3. Peak result: Peak detector, RBW: 1 MHz, VBW: 3 MHz.
4. Average result: Peak detector, RBW: 1 MHz, VBW: 1/T MHz(refer to clause 7.1.).
5. For above 3GHz part, filter losses were only considered in the spurious frequency bands and the authorized band was not corrected for HPF losses.
6. Only the worst case emission was recorded, if it complies with the limit, the other emissions deemed to comply with the limit.



Test Mode	Channel	Polarization	Verdict
2DH5	MCH	Horizontal	PASS



PK Result:

No.	Frequency	Reading Level	Correct Factor	Result	Limit	Margin	Remark
	[MHz]	[dBuV/m]	[dB]	[dBuV/m]	[dBuV/m]	[dB]	
1	4548.9436	39.65	5.67	45.32	74.00	-28.68	Horizontal
2	7444.3055	38.77	8.65	47.42	74.00	-26.58	Horizontal
3	9248.281	38.41	8.89	47.30	74.00	-26.70	Horizontal
4	11014.7518	37.22	12.51	49.73	74.00	-24.27	Horizontal
5	14738.9674	37.57	14.04	51.61	74.00	-22.39	Horizontal
6	16942.3678	36.53	18.44	54.97	74.00	-19.03	Horizontal
7	17615.5769	37.84	17.73	55.57	74.00	-18.43	Horizontal

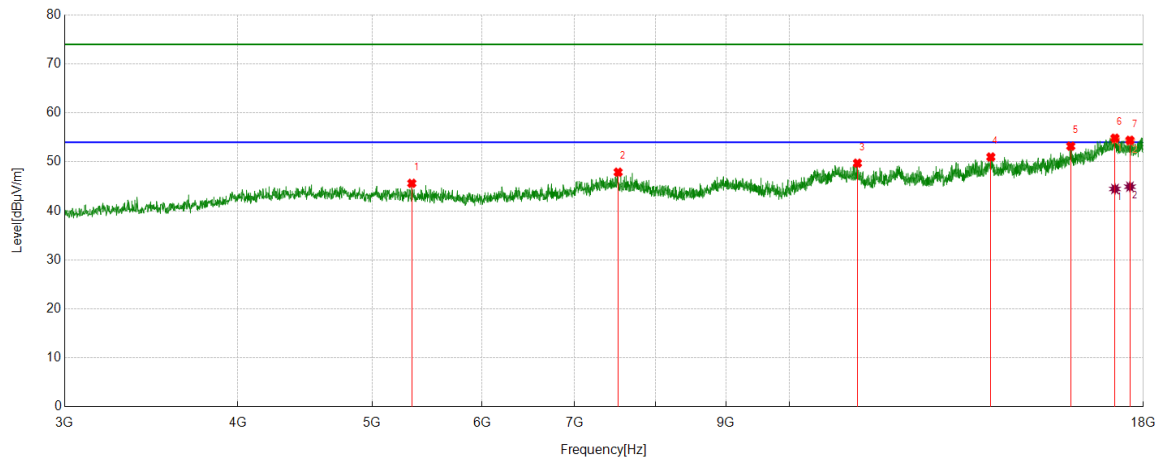
AV Result:

No.	Frequency	Reading Level	Correct Factor	Result	Limit	Margin	Remark
	[MHz]	[dBuV/m]	[dB]	[dBuV/m]	[dBuV/m]	[dB]	
1	16942.3678	26.24	18.44	44.68	54.00	-9.32	Horizontal
2	17615.5769	27.09	17.73	44.82	54.00	-9.18	Horizontal

- Note: 1. Measurement = Reading Level + Correct Factor.
2. If peak result complies with AV limit, AV Result is deemed to comply with AV limit.
3. Peak result: Peak detector, RBW: 1 MHz, VBW: 3 MHz.
4. Average result: Peak detector, RBW: 1 MHz, VBW: 1/T MHz(refer to clause 7.1.).
5. For above 3GHz part, filter losses were only considered in the spurious frequency bands and the authorized band was not corrected for HPF losses.
6. Only the worst case emission was recorded, if it complies with the limit, the other emissions deemed to comply with the limit.



Test Mode	Channel	Polarization	Verdict
2DH5	MCH	Vertical	PASS



PK Result:

No.	Frequency	Reading Level	Correct Factor	Result	Limit	Margin	Remark
	[MHz]	[dBuV/m]	[dB]	[dBuV/m]	[dBuV/m]	[dB]	
1	5340.2925	40.27	5.36	45.63	74.00	-28.37	Vertical
2	7523.0654	39.14	8.76	47.90	74.00	-26.10	Vertical
3	11194.7743	37.78	11.96	49.74	74.00	-24.26	Vertical
4	13971.9965	37.16	13.84	51.00	74.00	-23.00	Vertical
5	15955.9945	37.17	16.04	53.21	74.00	-20.79	Vertical
6	17171.1464	36.22	18.33	54.55	74.00	-19.45	Vertical
7	17604.3255	36.56	17.64	54.20	74.00	-19.80	Vertical

AV Result:

No.	Frequency	Reading Level	Correct Factor	Result	Limit	Margin	Remark
	[MHz]	[dBuV/m]	[dB]	[dBuV/m]	[dBuV/m]	[dB]	
1	17171.1464	26.15	18.33	44.48	54.00	-9.52	Vertical
2	17604.3255	27.30	17.64	44.94	54.00	-9.06	Vertical

Note: 1. Measurement = Reading Level + Correct Factor.

2. If peak result complies with AV limit, AV Result is deemed to comply with AV limit.

3. Peak result: Peak detector, RBW: 1 MHz, VBW: 3 MHz.

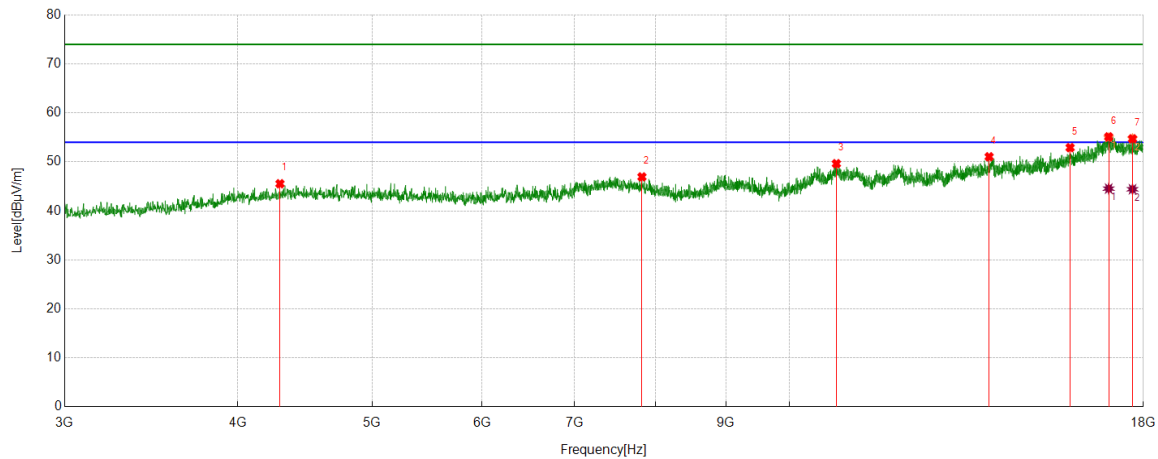
4. Average result: Peak detector, RBW: 1 MHz, VBW: 1/T MHz(refer to clause 7.1.).

5. For above 3GHz part, filter losses were only considered in the spurious frequency bands and the authorized band was not corrected for HPF losses.

6. Only the worst case emission was recorded, if it complies with the limit, the other emissions deemed to comply with the limit.



Test Mode	Channel	Polarization	Verdict
2DH5	HCH	Horizontal	PASS



PK Result:

No.	Frequency	Reading Level	Correct Factor	Result	Limit	Margin	Remark
	[MHz]	[dBuV/m]	[dB]	[dBuV/m]	[dBuV/m]	[dB]	
1	4290.1613	40.63	4.91	45.54	74.00	-28.46	Horizontal
2	7826.8534	38.98	7.96	46.94	74.00	-27.06	Horizontal
3	10810.3513	37.43	12.21	49.64	74.00	-24.36	Horizontal
4	13932.6166	36.61	14.44	51.05	74.00	-22.95	Horizontal
5	15939.1174	36.95	15.96	52.91	74.00	-21.09	Horizontal
6	16992.9991	36.21	18.72	54.93	74.00	-19.07	Horizontal
7	17679.3349	36.77	17.95	54.72	74.00	-19.28	Horizontal

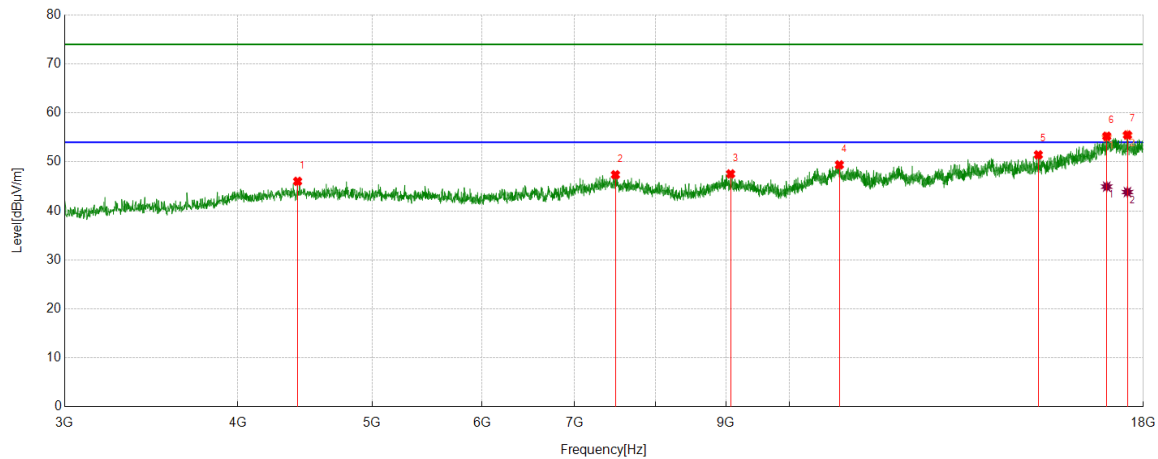
AV Result:

No.	Frequency	Reading Level	Correct Factor	Result	Limit	Margin	Remark
	[MHz]	[dBuV/m]	[dB]	[dBuV/m]	[dBuV/m]	[dB]	
1	16992.9991	25.83	18.72	44.55	54.00	-9.45	Horizontal
2	17679.3349	26.47	17.95	44.42	54.00	-9.58	Horizontal

- Note: 1. Measurement = Reading Level + Correct Factor.
2. If peak result complies with AV limit, AV Result is deemed to comply with AV limit.
3. Peak result: Peak detector, RBW: 1 MHz, VBW: 3 MHz.
4. Average result: Peak detector, RBW: 1 MHz, VBW: 1/T MHz(refer to clause 7.1.).
5. For above 3GHz part, filter losses were only considered in the spurious frequency bands and the authorized band was not corrected for HPF losses.
6. Only the worst case emission was recorded, if it complies with the limit, the other emissions deemed to comply with the limit.



Test Mode	Channel	Polarization	Verdict
2DH5	HCH	Vertical	PASS



PK Result:

No.	Frequency	Reading Level	Correct Factor	Result	Limit	Margin	Remark
	[MHz]	[dBuV/m]	[dB]	[dBuV/m]	[dBuV/m]	[dB]	
1	4417.6772	40.77	5.26	46.03	74.00	-27.97	Vertical
2	7489.3112	38.77	8.60	47.37	74.00	-26.63	Vertical
3	9068.2585	38.69	8.86	47.55	74.00	-26.45	Vertical
4	10864.7331	37.24	12.16	49.40	74.00	-24.60	Vertical
5	15119.64	37.19	14.25	51.44	74.00	-22.56	Vertical
6	16938.6173	36.55	18.45	55.00	74.00	-19.00	Vertical
7	17531.1914	37.57	17.86	55.43	74.00	-18.57	Vertical

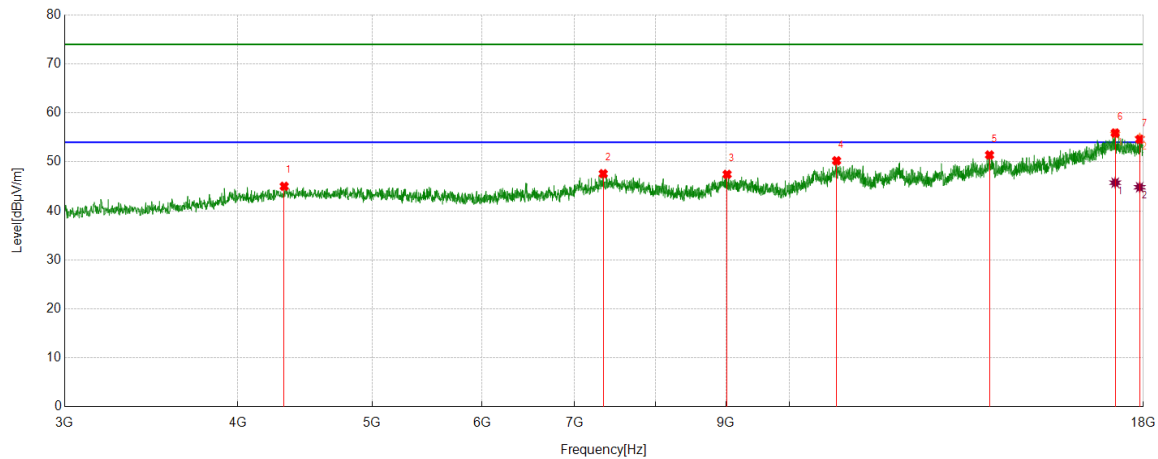
AV Result:

No.	Frequency	Reading Level	Correct Factor	Result	Limit	Margin	Remark
	[MHz]	[dBuV/m]	[dB]	[dBuV/m]	[dBuV/m]	[dB]	
1	16938.6173	26.50	18.45	44.95	54.00	-9.05	Vertical
2	17531.1914	25.98	17.86	43.84	54.00	-10.16	Vertical

- Note: 1. Measurement = Reading Level + Correct Factor.
2. If peak result complies with AV limit, AV Result is deemed to comply with AV limit.
3. Peak result: Peak detector, RBW: 1 MHz, VBW: 3 MHz.
4. Average result: Peak detector, RBW: 1 MHz, VBW: 1/T MHz(refer to clause 7.1.).
5. For above 3GHz part, filter losses were only considered in the spurious frequency bands and the authorized band was not corrected for HPF losses.
6. Only the worst case emission was recorded, if it complies with the limit, the other emissions deemed to comply with the limit.



Test Mode	Channel	Polarization	Verdict
3DH5	LCH	Horizontal	PASS



PK Result:

No.	Frequency	Reading Level	Correct Factor	Result	Limit	Margin	Remark
	[MHz]	[dBuV/m]	[dB]	[dBuV/m]	[dBuV/m]	[dB]	
1	4320.165	39.84	5.18	45.02	74.00	-28.98	Horizontal
2	7339.2924	39.01	8.58	47.59	74.00	-26.41	Horizontal
3	9015.752	38.38	9.08	47.46	74.00	-26.54	Horizontal
4	10814.1018	38.02	12.21	50.23	74.00	-23.77	Horizontal
5	13941.9927	37.05	14.36	51.41	74.00	-22.59	Horizontal
6	17178.6473	37.6	18.09	55.69	74.00	-18.31	Horizontal
7	17893.1116	36.35	18.51	54.86	74.00	-19.14	Horizontal

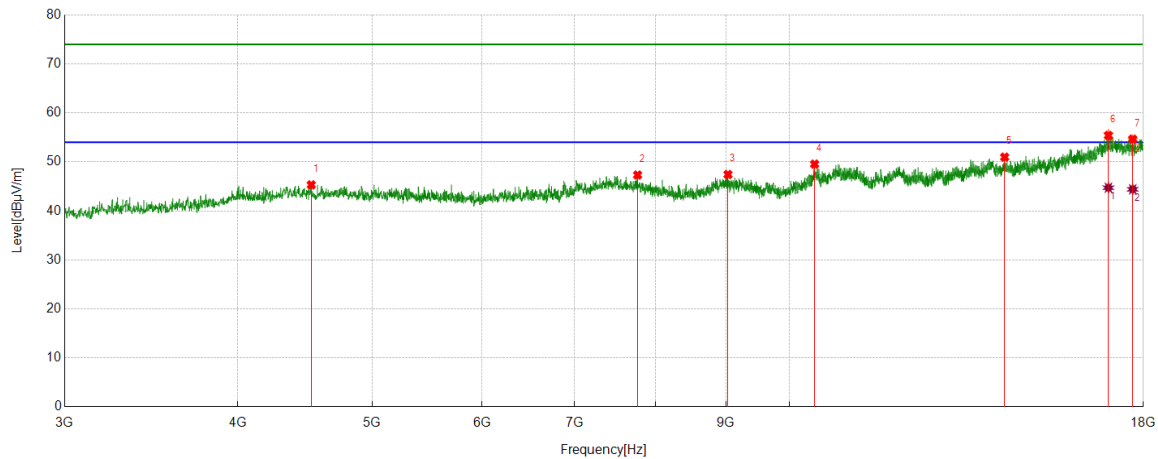
AV Result:

No.	Frequency	Reading Level	Correct Factor	Result	Limit	Margin	Remark
	[MHz]	[dBuV/m]	[dB]	[dBuV/m]	[dBuV/m]	[dB]	
1	17178.6473	27.66	18.09	45.75	54.00	-8.25	Horizontal
2	17893.1116	26.32	18.51	44.83	54.00	-9.17	Horizontal

- Note: 1. Measurement = Reading Level + Correct Factor.
2. If peak result complies with AV limit, AV Result is deemed to comply with AV limit.
3. Peak result: Peak detector, RBW: 1 MHz, VBW: 3 MHz.
4. Average result: Peak detector, RBW: 1 MHz, VBW: 1/T MHz(refer to clause 7.1.).
5. For above 3GHz part, filter losses were only considered in the spurious frequency bands and the authorized band was not corrected for HPF losses.
6. Only the worst case emission was recorded, if it complies with the limit, the other emissions deemed to comply with the limit.



Test Mode	Channel	Polarization	Verdict
3DH5	LCH	Vertical	PASS



PK Result:

No.	Frequency	Reading Level	Correct Factor	Result	Limit	Margin	Remark
	[MHz]	[dBuV/m]	[dB]	[dBuV/m]	[dBuV/m]	[dB]	
1	4518.9399	39.87	5.44	45.31	74.00	-28.69	Vertical
2	7770.5963	39.18	8.14	47.32	74.00	-26.68	Vertical
3	9028.8786	38.48	8.95	47.43	74.00	-26.57	Vertical
4	10425.9282	38.09	11.46	49.55	74.00	-24.45	Vertical
5	14296.4121	37.08	13.89	50.97	74.00	-23.03	Vertical
6	16985.4982	36.82	18.77	55.59	74.00	-18.41	Vertical
7	17684.9606	36.56	17.96	54.52	74.00	-19.48	Vertical

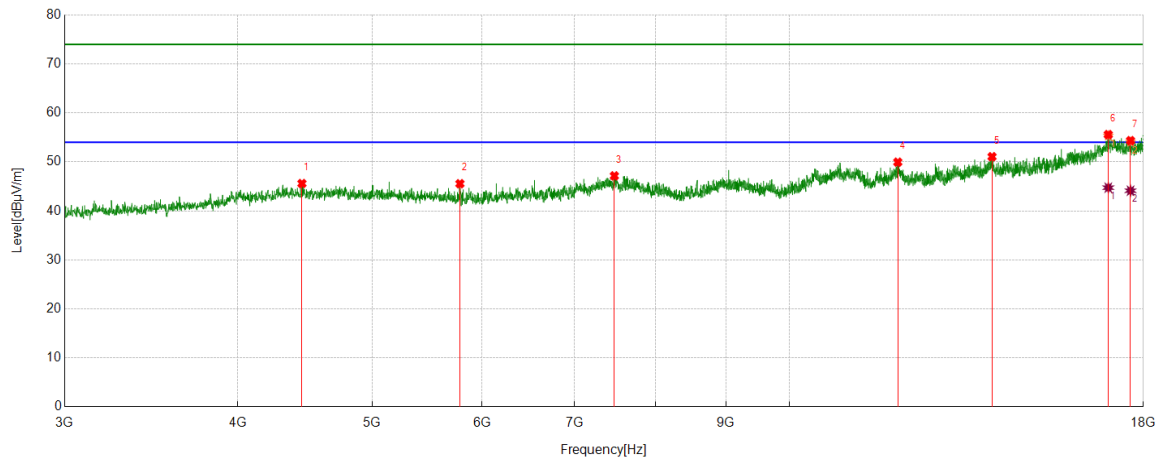
AV Result:

No.	Frequency	Reading Level	Correct Factor	Result	Limit	Margin	Remark
	[MHz]	[dBuV/m]	[dB]	[dBuV/m]	[dBuV/m]	[dB]	
1	16985.4982	25.96	18.77	44.73	54.00	-9.27	Vertical
2	17684.9606	26.45	17.96	44.41	54.00	-9.59	Vertical

- Note: 1. Measurement = Reading Level + Correct Factor.
2. If peak result complies with AV limit, AV Result is deemed to comply with AV limit.
3. Peak result: Peak detector, RBW: 1 MHz, VBW: 3 MHz.
4. Average result: Peak detector, RBW: 1 MHz, VBW: 1/T MHz(refer to clause 7.1.).
5. For above 3GHz part, filter losses were only considered in the spurious frequency bands and the authorized band was not corrected for HPF losses.
6. Only the worst case emission was recorded, if it complies with the limit, the other emissions deemed to comply with the limit.



Test Mode	Channel	Polarization	Verdict
3DH5	MCH	Horizontal	PASS



PK Result:

No.	Frequency	Reading Level	Correct Factor	Result	Limit	Margin	Remark
	[MHz]	[dBuV/m]	[dB]	[dBuV/m]	[dBuV/m]	[dB]	
1	4449.5562	40.08	5.51	45.59	74.00	-28.41	Horizontal
2	5784.7231	40.29	5.26	45.55	74.00	-28.45	Horizontal
3	7476.1845	38.34	8.81	47.15	74.00	-26.85	Horizontal
4	11971.1214	37.42	12.53	49.95	74.00	-24.05	Horizontal
5	14000.125	36.70	14.36	51.06	74.00	-22.94	Horizontal
6	16981.7477	36.58	18.76	55.34	74.00	-18.66	Horizontal
7	17621.2027	36.5	17.57	54.07	74.00	-19.93	Horizontal

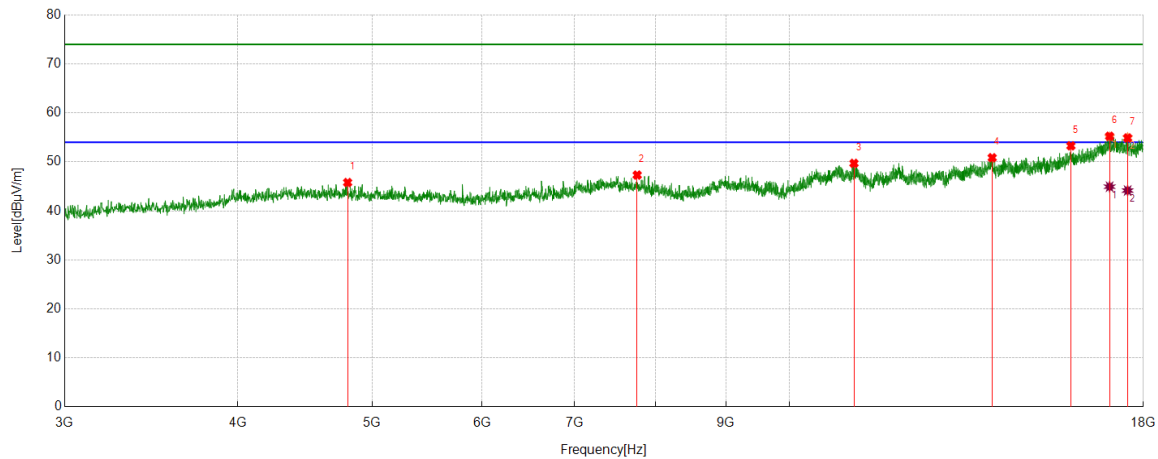
AV Result:

No.	Frequency	Reading Level	Correct Factor	Result	Limit	Margin	Remark
	[MHz]	[dBuV/m]	[dB]	[dBuV/m]	[dBuV/m]	[dB]	
1	16981.7477	25.98	18.76	44.74	54.00	-9.26	Horizontal
2	17621.2027	26.55	17.57	44.12	54.00	-9.88	Horizontal

- Note: 1. Measurement = Reading Level + Correct Factor.
2. If peak result complies with AV limit, AV Result is deemed to comply with AV limit.
3. Peak result: Peak detector, RBW: 1 MHz, VBW: 3 MHz.
4. Average result: Peak detector, RBW: 1 MHz, VBW: 1/T MHz(refer to clause 7.1.).
5. For above 3GHz part, filter losses were only considered in the spurious frequency bands and the authorized band was not corrected for HPF losses.
6. Only the worst case emission was recorded, if it complies with the limit, the other emissions deemed to comply with the limit.



Test Mode	Channel	Polarization	Verdict
3DH5	MCH	Vertical	PASS



PK Result:

No.	Frequency	Reading Level	Correct Factor	Result	Limit	Margin	Remark
	[MHz]	[dBuV/m]	[dB]	[dBuV/m]	[dBuV/m]	[dB]	
1	4800.225	40.12	5.67	45.79	74.00	-28.21	Vertical
2	7764.9706	39.12	8.19	47.31	74.00	-26.69	Vertical
3	11131.0164	37.67	12.03	49.70	74.00	-24.30	Vertical
4	14003.8755	36.50	14.35	50.85	74.00	-23.15	Vertical
5	15959.745	37.27	16.01	53.28	74.00	-20.72	Vertical
6	17019.2524	36.75	18.36	55.11	74.00	-18.89	Vertical
7	17536.8171	37.4	17.55	54.95	74.00	-19.05	Vertical

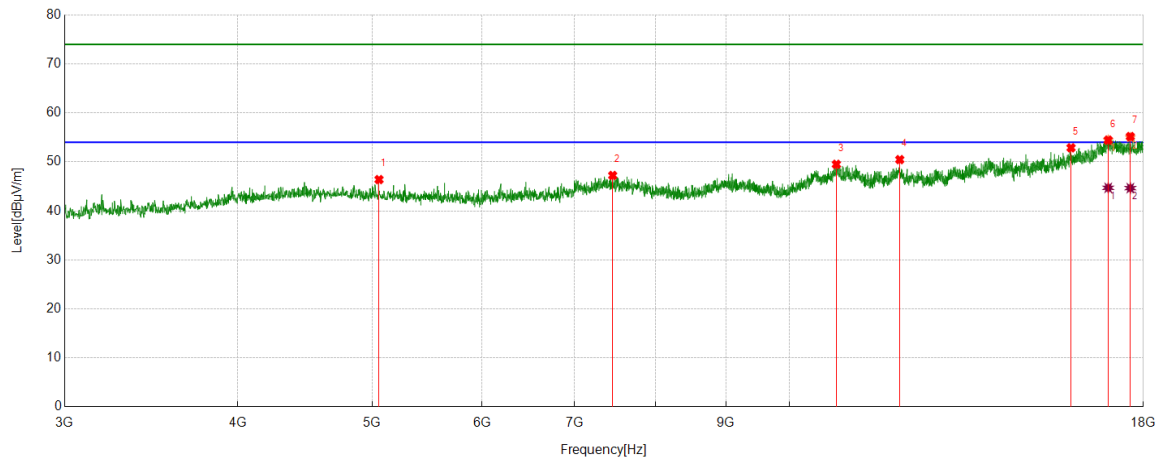
AV Result:

No.	Frequency	Reading Level	Correct Factor	Result	Limit	Margin	Remark
	[MHz]	[dBuV/m]	[dB]	[dBuV/m]	[dBuV/m]	[dB]	
1	17019.2524	26.58	18.36	44.94	54.00	-9.06	Vertical
2	17536.8171	26.61	17.55	44.16	54.00	-9.84	Vertical

- Note: 1. Measurement = Reading Level + Correct Factor.
2. If peak result complies with AV limit, AV Result is deemed to comply with AV limit.
3. Peak result: Peak detector, RBW: 1 MHz, VBW: 3 MHz.
4. Average result: Peak detector, RBW: 1 MHz, VBW: 1/T MHz(refer to clause 7.1.).
5. For above 3GHz part, filter losses were only considered in the spurious frequency bands and the authorized band was not corrected for HPF losses.
6. Only the worst case emission was recorded, if it complies with the limit, the other emissions deemed to comply with the limit.



Test Mode	Channel	Polarization	Verdict
3DH5	HCH	Horizontal	PASS



PK Result:

No.	Frequency	Reading Level	Correct Factor	Result	Limit	Margin	Remark
	[MHz]	[dBuV/m]	[dB]	[dBuV/m]	[dBuV/m]	[dB]	
1	5057.1321	41.03	5.36	46.39	74.00	-27.61	Horizontal
2	7455.5569	38.61	8.62	47.23	74.00	-26.77	Horizontal
3	10810.3513	37.29	12.21	49.50	74.00	-24.50	Horizontal
4	12010.5013	37.77	12.70	50.47	74.00	-23.53	Horizontal
5	15963.4954	36.93	15.95	52.88	74.00	-21.12	Horizontal
6	16979.8725	35.69	18.75	54.44	74.00	-19.56	Horizontal
7	17615.5769	37.24	17.73	54.97	74.00	-19.03	Horizontal

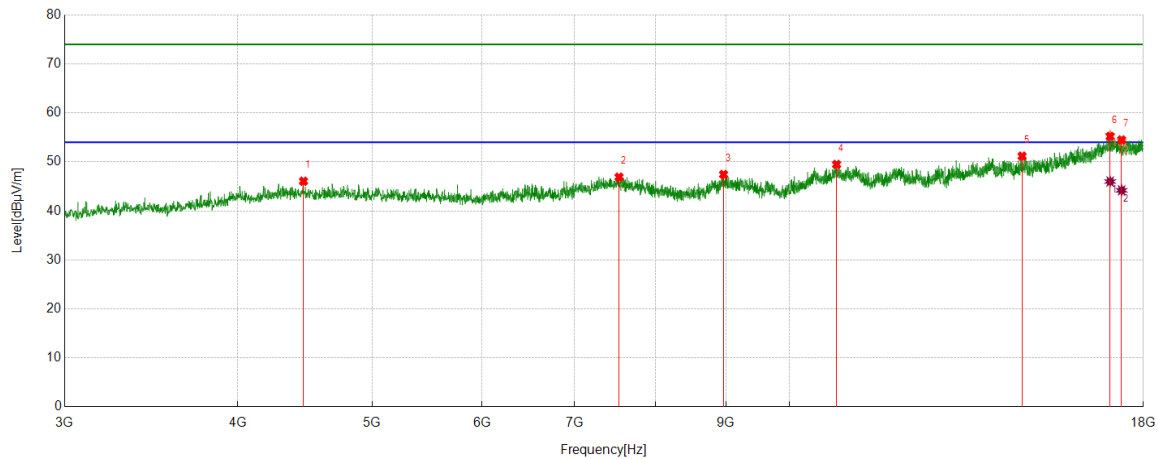
AV Result:

No.	Frequency	Reading Level	Correct Factor	Result	Limit	Margin	Remark
	[MHz]	[dBuV/m]	[dB]	[dBuV/m]	[dBuV/m]	[dB]	
1	16979.8725	25.96	18.75	44.71	54.00	-9.29	Horizontal
2	17615.5769	26.92	17.73	44.65	54.00	-9.35	Horizontal

- Note: 1. Measurement = Reading Level + Correct Factor.
2. If peak result complies with AV limit, AV Result is deemed to comply with AV limit.
3. Peak result: Peak detector, RBW: 1 MHz, VBW: 3 MHz.
4. Average result: Peak detector, RBW: 1 MHz, VBW: 1/T MHz(refer to clause 7.1.).
5. For above 3GHz part, filter losses were only considered in the spurious frequency bands and the authorized band was not corrected for HPF losses.
6. Only the worst case emission was recorded, if it complies with the limit, the other emissions deemed to comply with the limit.



Test Mode	Channel	Polarization	Verdict
3DH5	HCH	Vertical	PASS



PK Result:

No.	Frequency	Reading Level	Correct Factor	Result	Limit	Margin	Remark
	[MHz]	[dBuV/m]	[dB]	[dBuV/m]	[dBuV/m]	[dB]	
1	4460.8076	40.28	5.78	46.06	74.00	-27.94	Vertical
2	7534.3168	38.15	8.74	46.89	74.00	-27.11	Vertical
3	8963.2454	38.44	9.00	47.44	74.00	-26.56	Vertical
4	10814.1018	37.27	12.21	49.48	74.00	-24.52	Vertical
5	14716.4646	37.57	13.61	51.18	74.00	-22.82	Vertical
6	17034.2543	36.48	18.97	55.45	74.00	-18.55	Vertical
7	17362.4203	36.1	18.12	54.22	74.00	-19.78	Vertical

AV Result:

No.	Frequency	Reading Level	Correct Factor	Result	Limit	Margin	Remark
	[MHz]	[dBuV/m]	[dB]	[dBuV/m]	[dBuV/m]	[dB]	
1	17034.2543	27.03	18.97	46.00	54.00	-8.00	Vertical
2	17362.4203	26.08	18.12	44.20	54.00	-9.80	Vertical

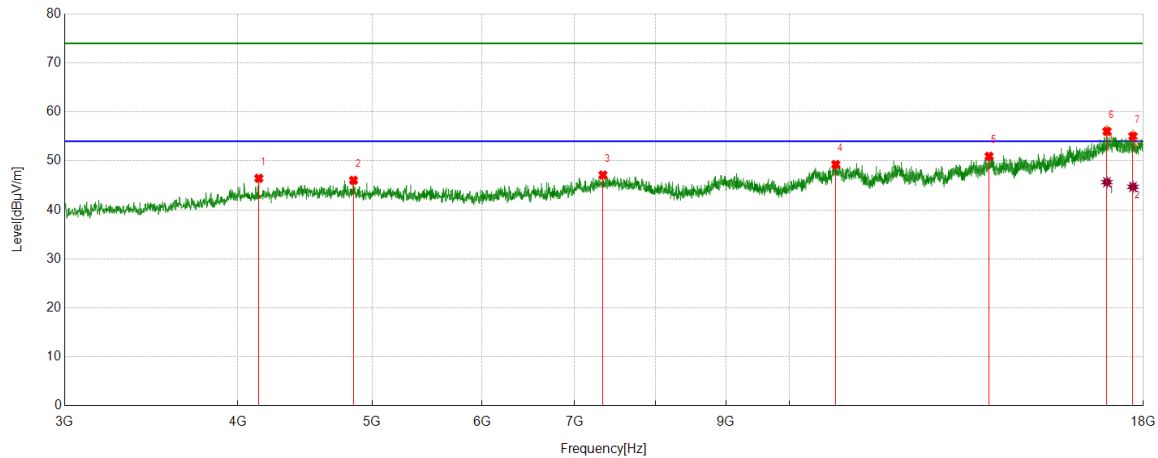
- Note: 1. Measurement = Reading Level + Correct Factor.
2. If peak result complies with AV limit, AV Result is deemed to comply with AV limit.
3. Peak result: Peak detector, RBW: 1 MHz, VBW: 3 MHz.
4. Average result: Peak detector, RBW: 1 MHz, VBW: 1/T MHz(refer to clause 7.1.).
5. For above 3GHz part, filter losses were only considered in the spurious frequency bands and the authorized band was not corrected for HPF losses.
6. Only the worst case emission was recorded, if it complies with the limit, the other emissions deemed to comply with the limit.



Antenna Type 1: PCB Antenna

HARMONICS AND SPURIOUS EMISSIONS

Test Mode	Channel	Polarization	Verdict
DH5	LCH	Horizontal	PASS



PK Result:

No.	Frequency	Reading Level	Correct Factor	Result	Limit	Margin	Remark
	[MHz]	[dBuV/m]	[dB]	[dBuV/m]	[dBuV/m]	[dB]	
1	4503.938	40.96	5.37	46.33	74.00	-27.67	Horizontal
2	7481.8102	38.73	8.80	47.53	74.00	-26.47	Horizontal
3	8953.8692	38.56	9.06	47.62	74.00	-26.38	Horizontal
4	10755.9695	37.44	12.07	49.51	74.00	-24.49	Horizontal
5	13930.7413	36.62	14.45	51.07	74.00	-22.93	Horizontal
6	17028.6286	36.39	18.94	55.33	74.00	-18.67	Horizontal
7	17619.3274	36.65	17.64	54.29	74.00	-19.71	Horizontal

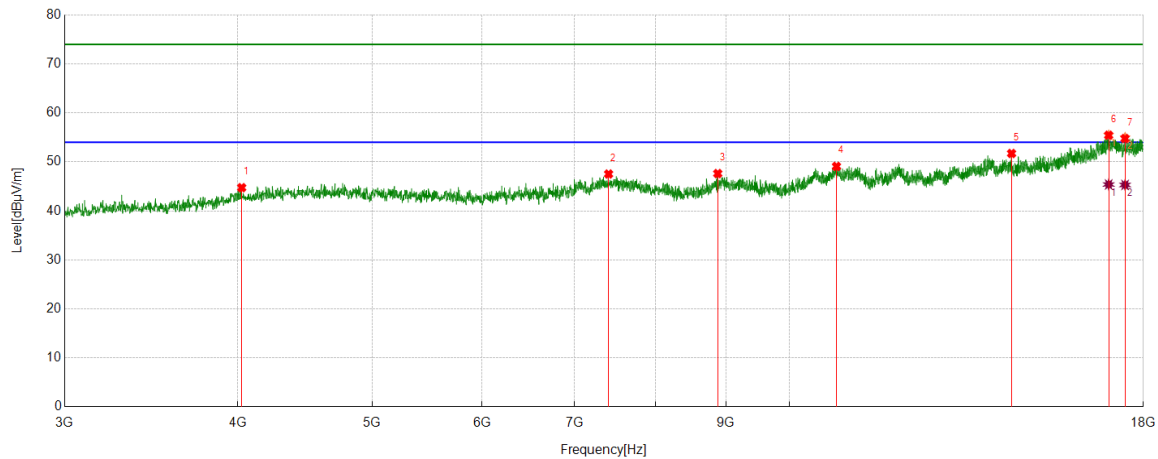
AV Result:

No.	Frequency	Reading Level	Correct Factor	Result	Limit	Margin	Remark
	[MHz]	[dBuV/m]	[dB]	[dBuV/m]	[dBuV/m]	[dB]	
1	17028.6286	27.23	18.94	46.17	54.00	-7.83	Horizontal
2	17619.3274	26.35	17.64	43.99	54.00	-10.01	Horizontal

- Note: 1. Measurement = Reading Level + Correct Factor.
2. If peak result complies with AV limit, AV Result is deemed to comply with AV limit.
3. Peak result: Peak detector, RBW: 1 MHz, VBW: 3 MHz.
4. Average result: Peak detector, RBW: 1 MHz, VBW: 1/T MHz(refer to clause 7.1.).
5. For above 3GHz part, filter losses were only considered in the spurious frequency bands and the authorized band was not corrected for HPF losses.
6. Only the worst case emission was recorded, if it complies with the limit, the other emissions deemed to comply with the limit.



Test Mode	Channel	Polarization	Verdict
DH5	LCH	Vertical	PASS



PK Result:

No.	Frequency	Reading Level	Correct Factor	Result	Limit	Margin	Remark
	[MHz]	[dBuV/m]	[dB]	[dBuV/m]	[dBuV/m]	[dB]	
1	4025.7532	40.31	4.43	44.74	74.00	-29.26	Vertical
2	7404.9256	38.86	8.67	47.53	74.00	-26.47	Vertical
3	8876.9846	39.16	8.46	47.62	74.00	-26.38	Vertical
4	10812.2265	36.87	12.21	49.08	74.00	-24.92	Vertical
5	14461.4327	38.12	13.60	51.72	74.00	-22.28	Vertical
6	16992.9991	36.76	18.72	55.48	74.00	-18.52	Vertical
7	17461.8077	37.25	17.73	54.98	74.00	-19.02	Vertical

AV Result:

No.	Frequency	Reading Level	Correct Factor	Result	Limit	Margin	Remark
	[MHz]	[dBuV/m]	[dB]	[dBuV/m]	[dBuV/m]	[dB]	
1	16992.9991	26.67	18.72	45.39	54.00	-8.61	Vertical
2	17461.8077	27.57	17.73	45.30	54.00	-8.70	Vertical

Note: 1. Measurement = Reading Level + Correct Factor.

2. If peak result complies with AV limit, AV Result is deemed to comply with AV limit.

3. Peak result: Peak detector, RBW: 1 MHz, VBW: 3 MHz.

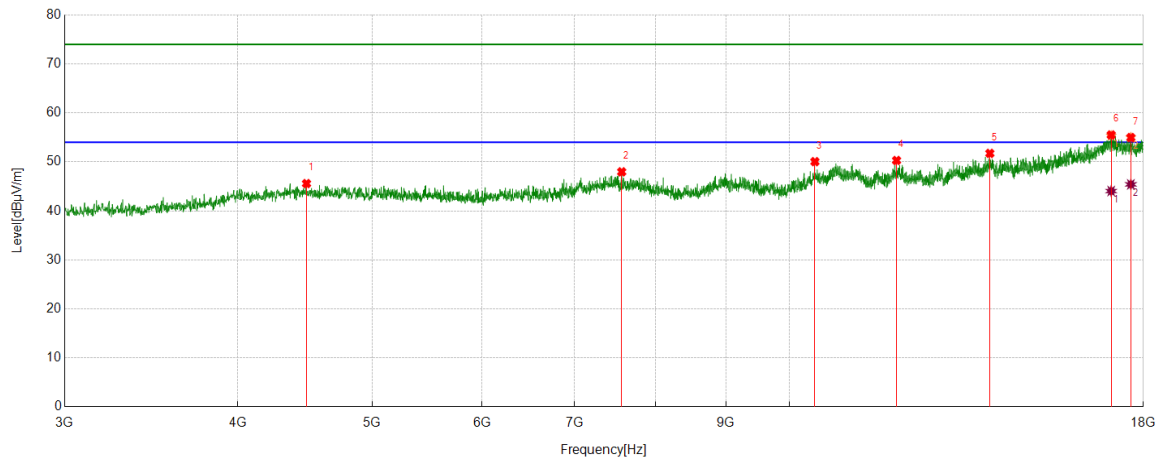
4. Average result: Peak detector, RBW: 1 MHz, VBW: 1/T MHz(refer to clause 7.1.).

5. For above 3GHz part, filter losses were only considered in the spurious frequency bands and the authorized band was not corrected for HPF losses.

6. Only the worst case emission was recorded, if it complies with the limit, the other emissions deemed to comply with the limit.



Test Mode	Channel	Polarization	Verdict
DH5	MCH	Horizontal	PASS



PK Result:

No.	Frequency	Reading Level	Correct Factor	Result	Limit	Margin	Remark
	[MHz]	[dBuV/m]	[dB]	[dBuV/m]	[dBuV/m]	[dB]	
1	4483.3104	40.36	5.22	45.58	74.00	-28.42	Horizontal
2	7568.071	39.42	8.55	47.97	74.00	-26.03	Horizontal
3	10431.5539	38.48	11.57	50.05	74.00	-23.95	Horizontal
4	11946.7433	37.62	12.67	50.29	74.00	-23.71	Horizontal
5	13949.4937	37.50	14.24	51.74	74.00	-22.26	Horizontal
6	17064.2580	36.4	18.94	55.34	74.00	-18.66	Horizontal
7	17630.5788	37.74	17.25	54.99	74.00	-19.01	Horizontal

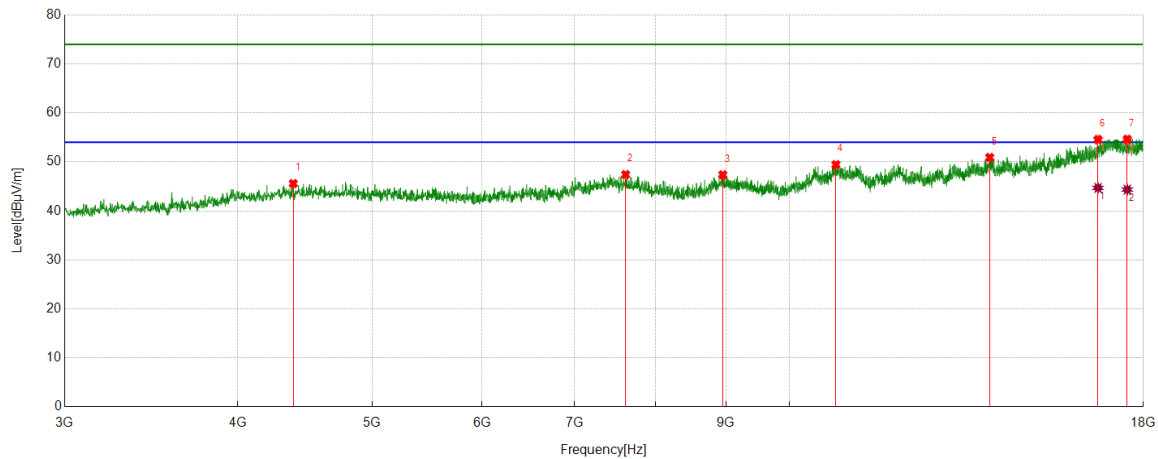
AV Result:

No.	Frequency	Reading Level	Correct Factor	Result	Limit	Margin	Remark
	[MHz]	[dBuV/m]	[dB]	[dBuV/m]	[dBuV/m]	[dB]	
1	17064.2580	25.11	18.94	44.05	54.00	-9.95	Horizontal
2	17630.5788	28.16	17.25	45.41	54.00	-8.59	Horizontal

- Note: 1. Measurement = Reading Level + Correct Factor.
2. If peak result complies with AV limit, AV Result is deemed to comply with AV limit.
3. Peak result: Peak detector, RBW: 1 MHz, VBW: 3 MHz.
4. Average result: Peak detector, RBW: 1 MHz, VBW: 1/T MHz(refer to clause 7.1.).
5. For above 3GHz part, filter losses were only considered in the spurious frequency bands and the authorized band was not corrected for HPF losses.
6. Only the worst case emission was recorded, if it complies with the limit, the other emissions deemed to comply with the limit.



Test Mode	Channel	Polarization	Verdict
DH5	MCH	Vertical	PASS



PK Result:

No.	Frequency [MHz]	Reading Level [dBuV/m]	Correct Factor [dB]	Result [dBuV/m]	Limit [dBuV/m]	Margin [dB]	Remark
1	4385.7982	40.47	5.11	45.58	74.00	-28.42	Vertical
2	7616.8271	38.90	8.51	47.41	74.00	-26.59	Vertical
3	8951.994	38.31	9.06	47.37	74.00	-26.63	Vertical
4	10802.8504	37.35	12.09	49.44	74.00	-24.56	Vertical
5	13947.6185	36.64	14.27	50.91	74.00	-23.09	Vertical
6	16694.8369	36.48	18.06	54.54	74.00	-19.46	Vertical
7	17525.5657	36.56	17.83	54.39	74.00	-19.61	Vertical

AV Result:

No.	Frequency [MHz]	Reading Level [dBuV/m]	Correct Factor [dB]	Result [dBuV/m]	Limit [dBuV/m]	Margin [dB]	Remark
1	16694.8369	26.64	18.06	44.70	54.00	-9.30	Vertical
2	17525.5657	26.52	17.83	44.35	54.00	-9.65	Vertical

Note: 1. Measurement = Reading Level + Correct Factor.

2. If peak result complies with AV limit, AV Result is deemed to comply with AV limit.

3. Peak result: Peak detector, RBW: 1 MHz, VBW: 3 MHz.

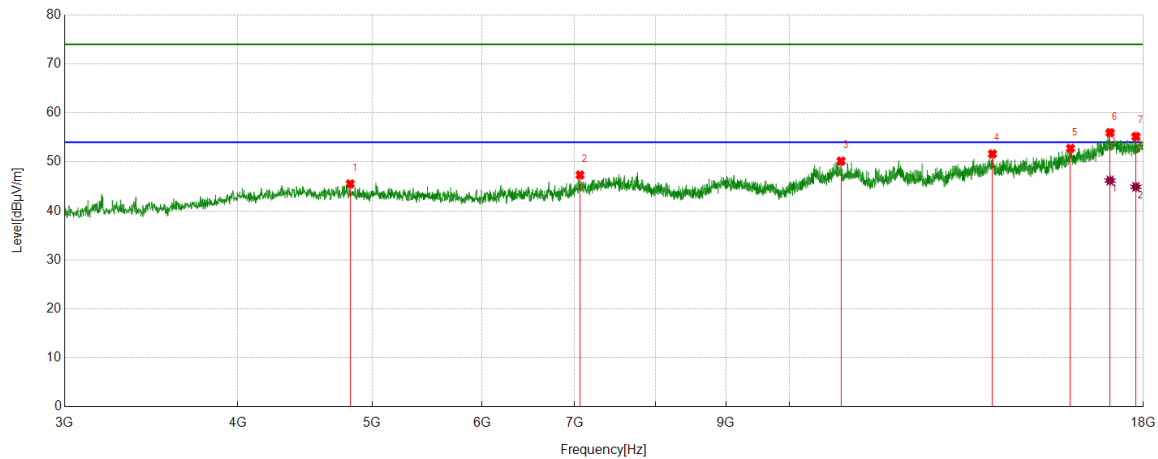
4. Average result: Peak detector, RBW: 1 MHz, VBW: 1/T MHz(refer to clause 7.1.).

5. For above 3GHz part, filter losses were only considered in the spurious frequency bands and the authorized band was not corrected for HPF losses.

6. Only the worst case emission was recorded, if it complies with the limit, the other emissions deemed to comply with the limit.



Test Mode	Channel	Polarization	Verdict
DH5	HCH	Horizontal	PASS



PK Result:

No.	Frequency	Reading Level	Correct Factor	Result	Limit	Margin	Remark
	[MHz]	[dBuV/m]	[dB]	[dBuV/m]	[dBuV/m]	[dB]	
1	4820.8526	40.21	5.31	45.52	74.00	-28.48	Horizontal
2	7061.7577	39.18	8.16	47.34	74.00	-26.66	Horizontal
3	10894.7368	37.92	12.24	50.16	74.00	-23.84	Horizontal
4	14009.5012	37.31	14.32	51.63	74.00	-22.37	Horizontal
5	15948.4936	36.70	16.07	52.77	74.00	-21.23	Horizontal
6	17032.3790	36.84	19.00	55.84	74.00	-18.16	Horizontal
7	17778.7223	36.96	18.27	55.23	74.00	-18.77	Horizontal

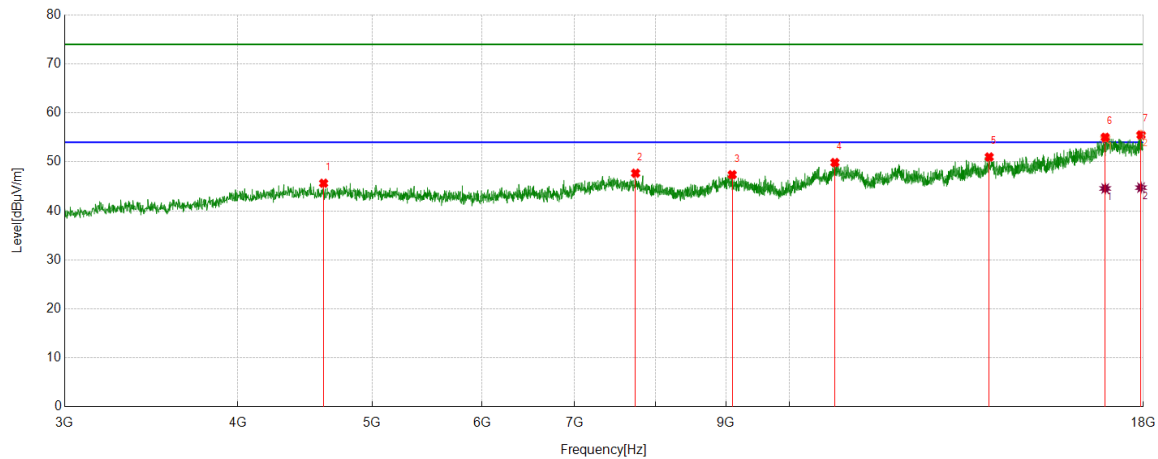
AV Result:

No.	Frequency	Reading Level	Correct Factor	Result	Limit	Margin	Remark
	[MHz]	[dBuV/m]	[dB]	[dBuV/m]	[dBuV/m]	[dB]	
1	17032.3790	27.20	19.00	46.20	54.00	-7.80	Horizontal
2	17778.7223	26.63	18.27	44.90	54.00	-9.10	Horizontal

- Note: 1. Measurement = Reading Level + Correct Factor.
2. If peak result complies with AV limit, AV Result is deemed to comply with AV limit.
3. Peak result: Peak detector, RBW: 1 MHz, VBW: 3 MHz.
4. Average result: Peak detector, RBW: 1 MHz, VBW: 1/T MHz(refer to clause 7.1.).
5. For above 3GHz part, filter losses were only considered in the spurious frequency bands and the authorized band was not corrected for HPF losses.
6. Only the worst case emission was recorded, if it complies with the limit, the other emissions deemed to comply with the limit.



Test Mode	Channel	Polarization	Verdict
DH5	HCH	Vertical	PASS



PK Result:

No.	Frequency	Reading Level	Correct Factor	Result	Limit	Margin	Remark
	[MHz]	[dBuV/m]	[dB]	[dBuV/m]	[dBuV/m]	[dB]	
1	4612.7016	40.35	5.29	45.64	74.00	-28.36	Vertical
2	7744.343	39.54	8.15	47.69	74.00	-26.31	Vertical
3	9092.6366	38.43	8.95	47.38	74.00	-26.62	Vertical
4	10784.098	37.73	12.13	49.86	74.00	-24.14	Vertical
5	13934.4918	36.57	14.43	51.00	74.00	-23.00	Vertical
6	16895.4869	36.87	17.91	54.78	74.00	-19.22	Vertical
7	17930.6163	37.3	18.15	55.45	74.00	-18.55	Vertical

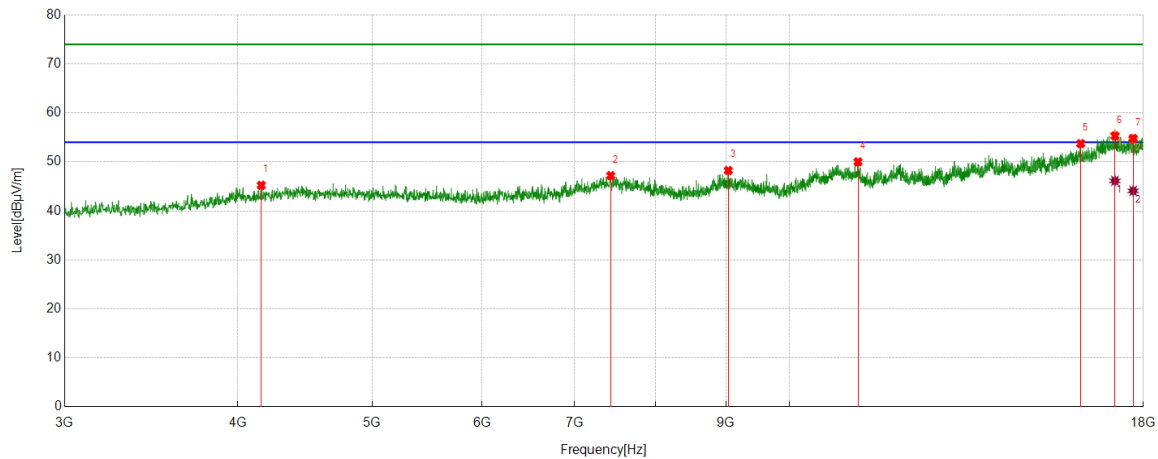
AV Result:

No.	Frequency	Reading Level	Correct Factor	Result	Limit	Margin	Remark
	[MHz]	[dBuV/m]	[dB]	[dBuV/m]	[dBuV/m]	[dB]	
1	16895.4869	26.66	17.91	44.57	54.00	-9.43	Vertical
2	17930.6163	26.60	18.15	44.75	54.00	-9.25	Vertical

- Note: 1. Measurement = Reading Level + Correct Factor.
2. If peak result complies with AV limit, AV Result is deemed to comply with AV limit.
3. Peak result: Peak detector, RBW: 1 MHz, VBW: 3 MHz.
4. Average result: Peak detector, RBW: 1 MHz, VBW: 1/T MHz(refer to clause 7.1.).
5. For above 3GHz part, filter losses were only considered in the spurious frequency bands and the authorized band was not corrected for HPF losses.
6. Only the worst case emission was recorded, if it complies with the limit, the other emissions deemed to comply with the limit.



Test Mode	Channel	Polarization	Verdict
2DH5	LCH	Horizontal	PASS



PK Result:

No.	Frequency	Reading Level	Correct Factor	Result	Limit	Margin	Remark
	[MHz]	[dBuV/m]	[dB]	[dBuV/m]	[dBuV/m]	[dB]	
1	4158.8949	40.45	4.77	45.22	74.00	-28.78	Horizontal
2	7431.1789	38.65	8.55	47.20	74.00	-26.80	Horizontal
3	9034.5043	39.22	9.02	48.24	74.00	-25.76	Horizontal
4	11206.0258	38.20	11.81	50.01	74.00	-23.99	Horizontal
5	16222.2778	37.85	15.88	53.73	74.00	-20.27	Horizontal
6	17171.1464	37.24	18.33	55.57	74.00	-18.43	Horizontal
7	17698.0873	36.84	17.80	54.64	74.00	-19.36	Horizontal

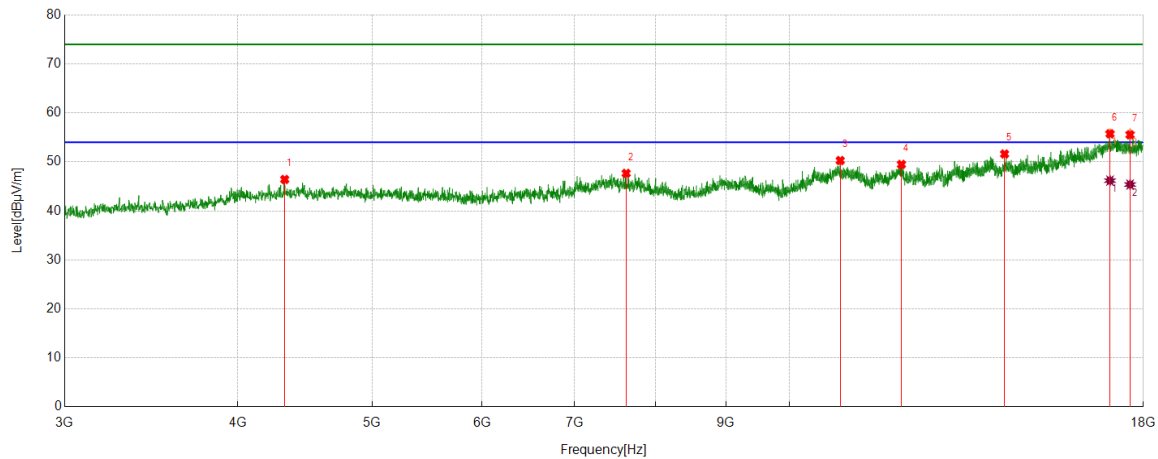
AV Result:

No.	Frequency	Reading Level	Correct Factor	Result	Limit	Margin	Remark
	[MHz]	[dBuV/m]	[dB]	[dBuV/m]	[dBuV/m]	[dB]	
1	17171.1464	27.79	18.33	46.12	54.00	-7.88	Horizontal
2	17698.0873	26.28	17.80	44.08	54.00	-9.92	Horizontal

- Note: 1. Measurement = Reading Level + Correct Factor.
2. If peak result complies with AV limit, AV Result is deemed to comply with AV limit.
3. Peak result: Peak detector, RBW: 1 MHz, VBW: 3 MHz.
4. Average result: Peak detector, RBW: 1 MHz, VBW: 1/T MHz(refer to clause 7.1.).
5. For above 3GHz part, filter losses were only considered in the spurious frequency bands and the authorized band was not corrected for HPF losses.
6. Only the worst case emission was recorded, if it complies with the limit, the other emissions deemed to comply with the limit.



Test Mode	Channel	Polarization	Verdict
2DH5	LCH	Vertical	PASS



PK Result:

No.	Frequency	Reading Level	Correct Factor	Result	Limit	Margin	Remark
	[MHz]	[dBuV/m]	[dB]	[dBuV/m]	[dBuV/m]	[dB]	
1	4323.9155	41.29	5.13	46.42	74.00	-27.58	Vertical
2	7624.328	39.26	8.41	47.67	74.00	-26.33	Vertical
3	10879.735	38.04	12.24	50.28	74.00	-23.72	Vertical
4	12044.2555	37.01	12.47	49.48	74.00	-24.52	Vertical
5	14294.5368	37.73	13.88	51.61	74.00	-22.39	Vertical
6	17030.5038	36.75	19.03	55.78	74.00	-18.22	Vertical
7	17608.0760	37.96	17.79	55.75	74.00	-18.25	Vertical

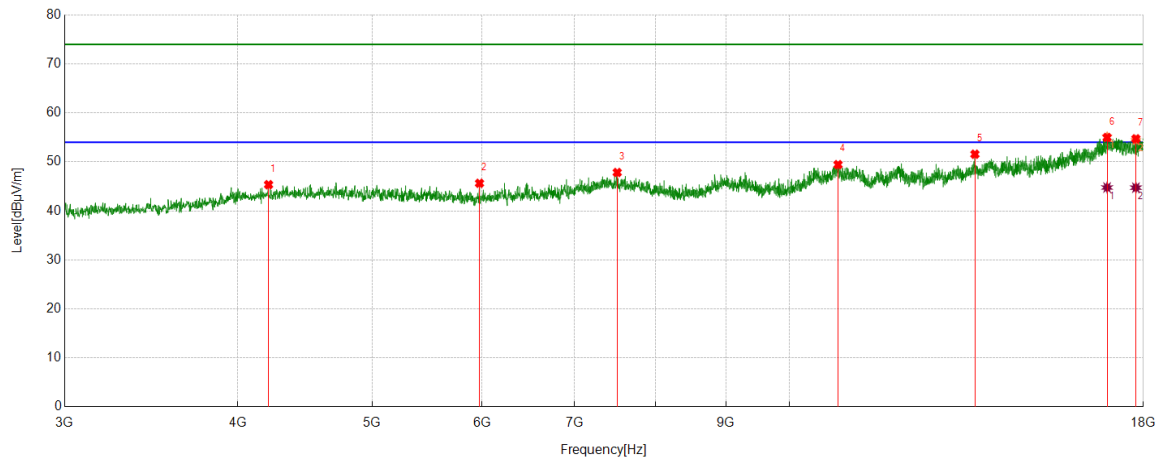
AV Result:

No.	Frequency	Reading Level	Correct Factor	Result	Limit	Margin	Remark
	[MHz]	[dBuV/m]	[dB]	[dBuV/m]	[dBuV/m]	[dB]	
1	17030.5038	27.15	19.03	46.18	54.00	-7.82	Vertical
2	17608.0760	27.59	17.79	45.38	54.00	-8.62	Vertical

- Note: 1. Measurement = Reading Level + Correct Factor.
2. If peak result complies with AV limit, AV Result is deemed to comply with AV limit.
3. Peak result: Peak detector, RBW: 1 MHz, VBW: 3 MHz.
4. Average result: Peak detector, RBW: 1 MHz, VBW: 1/T MHz(refer to clause 7.1.).
5. For above 3GHz part, filter losses were only considered in the spurious frequency bands and the authorized band was not corrected for HPF losses.
6. Only the worst case emission was recorded, if it complies with the limit, the other emissions deemed to comply with the limit.



Test Mode	Channel	Polarization	Verdict
2DH5	MCH	Horizontal	PASS



PK Result:

No.	Frequency	Reading Level	Correct Factor	Result	Limit	Margin	Remark
	[MHz]	[dBuV/m]	[dB]	[dBuV/m]	[dBuV/m]	[dB]	
1	4209.5262	40.28	5.07	45.35	74.00	-28.65	Horizontal
2	5975.997	40.63	5.01	45.64	74.00	-28.36	Horizontal
3	7511.814	39.20	8.64	47.84	74.00	-26.16	Horizontal
4	10840.355	37.29	12.15	49.44	74.00	-24.56	Horizontal
5	13608.201	38.63	12.94	51.57	74.00	-22.43	Horizontal
6	16947.9935	36.74	18.37	55.11	74.00	-18.89	Horizontal
7	17778.7223	36.15	18.27	54.42	74.00	-19.58	Horizontal

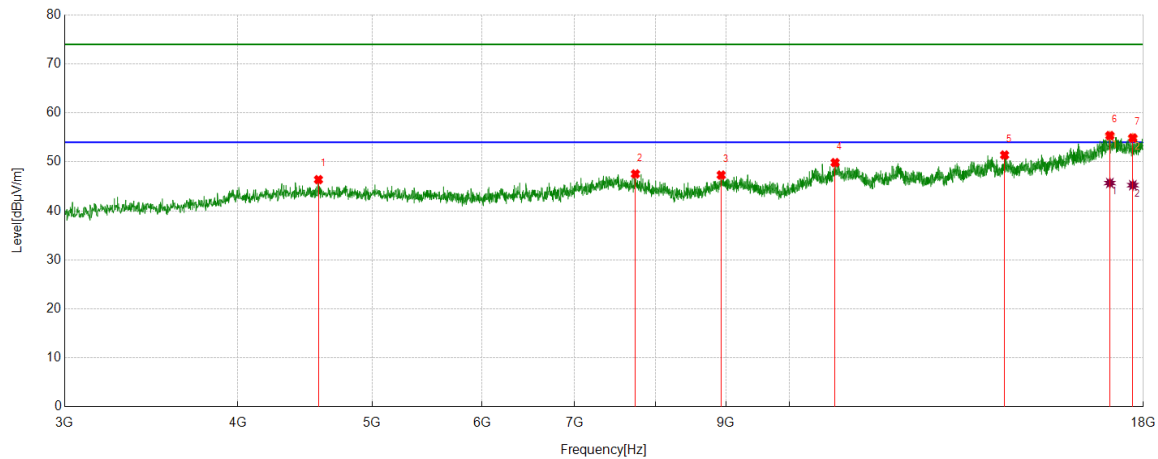
AV Result:

No.	Frequency	Reading Level	Correct Factor	Result	Limit	Margin	Remark
	[MHz]	[dBuV/m]	[dB]	[dBuV/m]	[dBuV/m]	[dB]	
1	16947.9935	26.40	18.37	44.77	54.00	-9.23	Horizontal
2	17778.7223	26.47	18.27	44.74	54.00	-9.26	Horizontal

- Note: 1. Measurement = Reading Level + Correct Factor.
2. If peak result complies with AV limit, AV Result is deemed to comply with AV limit.
3. Peak result: Peak detector, RBW: 1 MHz, VBW: 3 MHz.
4. Average result: Peak detector, RBW: 1 MHz, VBW: 1/T MHz(refer to clause 7.1.).
5. For above 3GHz part, filter losses were only considered in the spurious frequency bands and the authorized band was not corrected for HPF losses.
6. Only the worst case emission was recorded, if it complies with the limit, the other emissions deemed to comply with the limit.



Test Mode	Channel	Polarization	Verdict
2DH5	MCH	Vertical	PASS



PK Result:

No.	Frequency	Reading Level	Correct Factor	Result	Limit	Margin	Remark
	[MHz]	[dBuV/m]	[dB]	[dBuV/m]	[dBuV/m]	[dB]	
1	4573.3217	41.05	5.33	46.38	74.00	-27.62	Vertical
2	7742.4678	39.40	8.14	47.54	74.00	-26.46	Vertical
3	8927.616	38.49	8.82	47.31	74.00	-26.69	Vertical
4	10787.8485	37.74	12.11	49.85	74.00	-24.15	Vertical
5	14294.5368	37.52	13.88	51.40	74.00	-22.60	Vertical
6	17026.7533	36.42	18.81	55.23	74.00	-18.77	Vertical
7	17688.7111	36.87	17.96	54.83	74.00	-19.17	Vertical

AV Result:

No.	Frequency	Reading Level	Correct Factor	Result	Limit	Margin	Remark
	[MHz]	[dBuV/m]	[dB]	[dBuV/m]	[dBuV/m]	[dB]	
1	17026.7533	26.88	18.81	45.69	54.00	-8.31	Vertical
2	17688.7111	27.29	17.96	45.25	54.00	-8.75	Vertical

Note: 1. Measurement = Reading Level + Correct Factor.

2. If peak result complies with AV limit, AV Result is deemed to comply with AV limit.

3. Peak result: Peak detector, RBW: 1 MHz, VBW: 3 MHz.

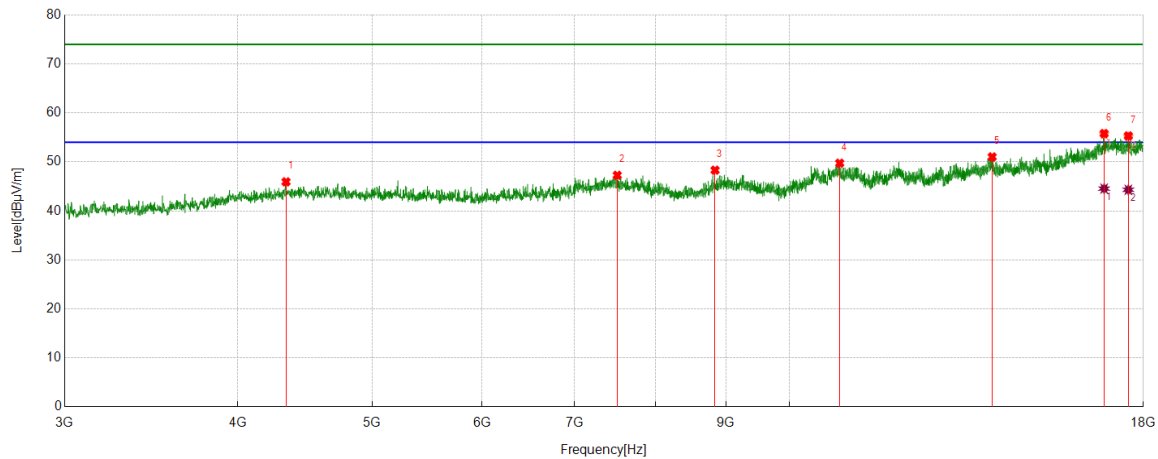
4. Average result: Peak detector, RBW: 1 MHz, VBW: 1/T MHz(refer to clause 7.1.).

5. For above 3GHz part, filter losses were only considered in the spurious frequency bands and the authorized band was not corrected for HPF losses.

6. Only the worst case emission was recorded, if it complies with the limit, the other emissions deemed to comply with the limit.



Test Mode	Channel	Polarization	Verdict
2DH5	HCH	Horizontal	PASS



PK Result:

No.	Frequency	Reading Level	Correct Factor	Result	Limit	Margin	Remark
	[MHz]	[dBuV/m]	[dB]	[dBuV/m]	[dBuV/m]	[dB]	
1	4333.2917	40.77	5.16	45.93	74.00	-28.07	Horizontal
2	7511.814	38.63	8.64	47.27	74.00	-26.73	Horizontal
3	8837.6047	40.04	8.27	48.31	74.00	-25.69	Horizontal
4	10870.3588	37.58	12.16	49.74	74.00	-24.26	Horizontal
5	14003.8755	36.67	14.35	51.02	74.00	-22.98	Horizontal
6	16865.4832	37.72	17.87	55.59	74.00	-18.41	Horizontal
7	17557.4447	37.13	17.94	55.07	74.00	-18.93	Horizontal

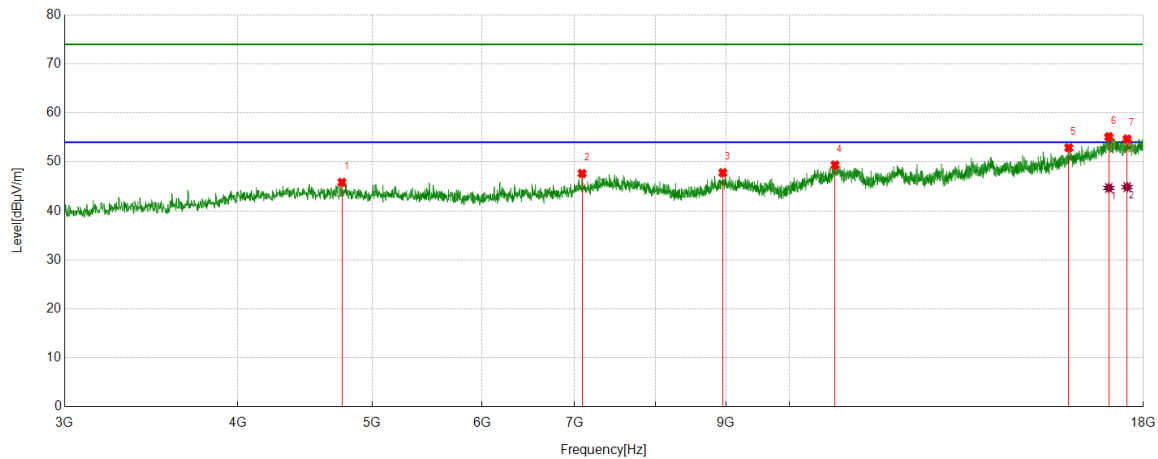
AV Result:

No.	Frequency	Reading Level	Correct Factor	Result	Limit	Margin	Remark
	[MHz]	[dBuV/m]	[dB]	[dBuV/m]	[dBuV/m]	[dB]	
1	16865.4832	26.68	17.87	44.55	54.00	-9.45	Horizontal
2	17557.4447	26.37	17.94	44.31	54.00	-9.69	Horizontal

- Note: 1. Measurement = Reading Level + Correct Factor.
2. If peak result complies with AV limit, AV Result is deemed to comply with AV limit.
3. Peak result: Peak detector, RBW: 1 MHz, VBW: 3 MHz.
4. Average result: Peak detector, RBW: 1 MHz, VBW: 1/T MHz(refer to clause 7.1.).
5. For above 3GHz part, filter losses were only considered in the spurious frequency bands and the authorized band was not corrected for HPF losses.
6. Only the worst case emission was recorded, if it complies with the limit, the other emissions deemed to comply with the limit.



Test Mode	Channel	Polarization	Verdict
2DH5	HCH	Vertical	PASS



PK Result:

No.	Frequency	Reading Level	Correct Factor	Result	Limit	Margin	Remark
	[MHz]	[dBuV/m]	[dB]	[dBuV/m]	[dBuV/m]	[dB]	
1	4755.2194	40.43	5.40	45.83	74.00	-28.17	Vertical
2	7086.1358	39.18	8.46	47.64	74.00	-26.36	Vertical
3	8951.994	38.72	9.06	47.78	74.00	-26.22	Vertical
4	10785.9732	37.26	12.12	49.38	74.00	-24.62	Vertical
5	15903.4879	37.74	15.16	52.90	74.00	-21.10	Vertical
6	16996.7496	36.42	18.64	55.06	74.00	-18.94	Vertical
7	17521.8152	36.65	17.75	54.40	74.00	-19.60	Vertical

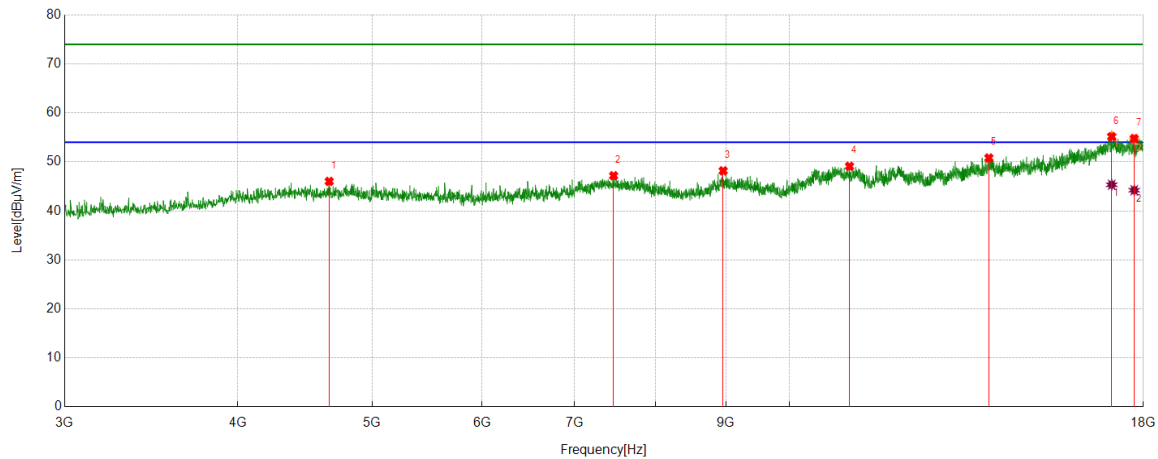
AV Result:

No.	Frequency	Reading Level	Correct Factor	Result	Limit	Margin	Remark
	[MHz]	[dBuV/m]	[dB]	[dBuV/m]	[dBuV/m]	[dB]	
1	16996.7496	26.05	18.64	44.69	54.00	-9.31	Vertical
2	17521.8152	27.11	17.75	44.86	54.00	-9.14	Vertical

- Note: 1. Measurement = Reading Level + Correct Factor.
2. If peak result complies with AV limit, AV Result is deemed to comply with AV limit.
3. Peak result: Peak detector, RBW: 1 MHz, VBW: 3 MHz.
4. Average result: Peak detector, RBW: 1 MHz, VBW: 1/T MHz(refer to clause 7.1.).
5. For above 3GHz part, filter losses were only considered in the spurious frequency bands and the authorized band was not corrected for HPF losses.
6. Only the worst case emission was recorded, if it complies with the limit, the other emissions deemed to comply with the limit.



Test Mode	Channel	Polarization	Verdict
3DH5	LCH	Horizontal	PASS



PK Result:

No.	Frequency	Reading Level	Correct Factor	Result	Limit	Margin	Remark
	[MHz]	[dBuV/m]	[dB]	[dBuV/m]	[dBuV/m]	[dB]	
1	4655.832	40.48	5.54	46.02	74.00	-27.98	Horizontal
2	7466.8084	38.47	8.71	47.18	74.00	-26.82	Horizontal
3	8957.6197	39.13	9.05	48.18	74.00	-25.82	Horizontal
4	11048.5061	36.94	12.16	49.10	74.00	-24.90	Horizontal
5	13926.9909	36.49	14.32	50.81	74.00	-23.19	Horizontal
6	17079.2599	36.6	18.75	55.35	74.00	-18.65	Horizontal
7	17729.9662	36.88	17.67	54.55	74.00	-19.45	Horizontal

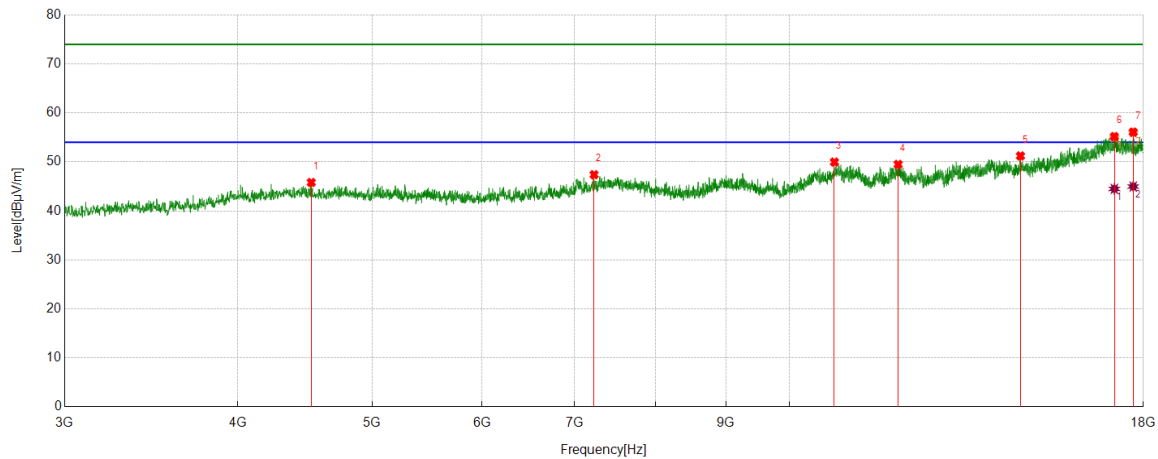
AV Result:

No.	Frequency	Reading Level	Correct Factor	Result	Limit	Margin	Remark
	[MHz]	[dBuV/m]	[dB]	[dBuV/m]	[dBuV/m]	[dB]	
1	17079.2599	26.59	18.75	45.34	54.00	-8.66	Horizontal
2	17729.9662	26.55	17.67	44.22	54.00	-9.78	Horizontal

- Note: 1. Measurement = Reading Level + Correct Factor.
2. If peak result complies with AV limit, AV Result is deemed to comply with AV limit.
3. Peak result: Peak detector, RBW: 1 MHz, VBW: 3 MHz.
4. Average result: Peak detector, RBW: 1 MHz, VBW: 1/T MHz(refer to clause 7.1.).
5. For above 3GHz part, filter losses were only considered in the spurious frequency bands and the authorized band was not corrected for HPF losses.
6. Only the worst case emission was recorded, if it complies with the limit, the other emissions deemed to comply with the limit.



Test Mode	Channel	Polarization	Verdict
3DH5	LCH	Vertical	PASS



PK Result:

No.	Frequency	Reading Level	Correct Factor	Result	Limit	Margin	Remark
	[MHz]	[dBuV/m]	[dB]	[dBuV/m]	[dBuV/m]	[dB]	
1	4518.9399	40.36	5.44	45.80	74.00	-28.20	Vertical
2	7228.6536	38.90	8.49	47.39	74.00	-26.61	Vertical
3	10774.7218	37.74	12.23	49.97	74.00	-24.03	Vertical
4	11978.6223	36.72	12.77	49.49	74.00	-24.51	Vertical
5	14677.0846	37.26	13.96	51.22	74.00	-22.78	Vertical
6	17154.2693	36.67	18.25	54.92	74.00	-19.08	Vertical
7	17699.9625	38.16	17.76	55.92	74.00	-18.08	Vertical

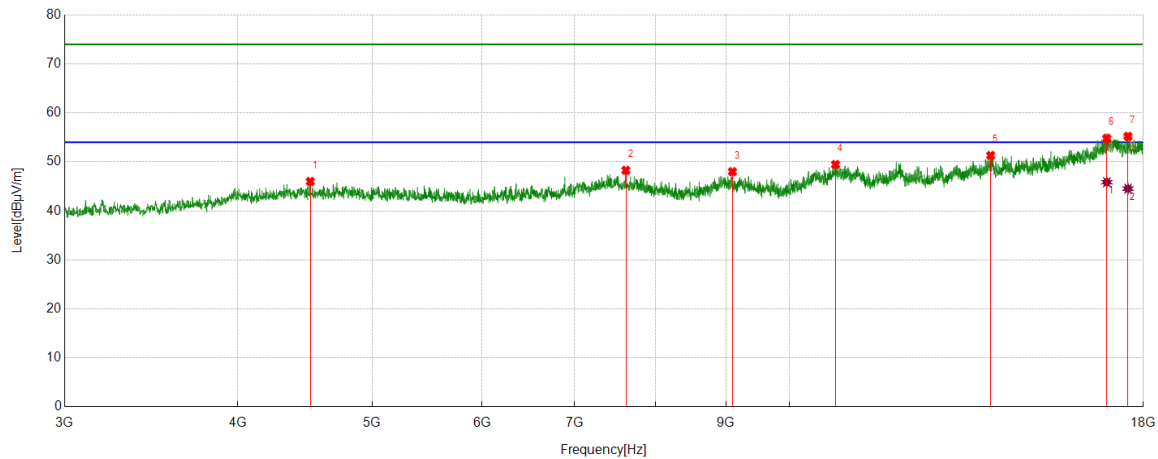
AV Result:

No.	Frequency	Reading Level	Correct Factor	Result	Limit	Margin	Remark
	[MHz]	[dBuV/m]	[dB]	[dBuV/m]	[dBuV/m]	[dB]	
1	17154.2693	26.25	18.25	44.50	54.00	-9.50	Vertical
2	17699.9625	27.21	17.76	44.97	54.00	-9.03	Vertical

- Note: 1. Measurement = Reading Level + Correct Factor.
2. If peak result complies with AV limit, AV Result is deemed to comply with AV limit.
3. Peak result: Peak detector, RBW: 1 MHz, VBW: 3 MHz.
4. Average result: Peak detector, RBW: 1 MHz, VBW: 1/T MHz(refer to clause 7.1.).
5. For above 3GHz part, filter losses were only considered in the spurious frequency bands and the authorized band was not corrected for HPF losses.
6. Only the worst case emission was recorded, if it complies with the limit, the other emissions deemed to comply with the limit.



Test Mode	Channel	Polarization	Verdict
3DH5	MCH	Horizontal	PASS



PK Result:

No.	Frequency	Reading Level	Correct Factor	Result	Limit	Margin	Remark
	[MHz]	[dBuV/m]	[dB]	[dBuV/m]	[dBuV/m]	[dB]	
1	4511.4389	40.48	5.53	46.01	74.00	-27.99	Horizontal
2	7620.5776	39.85	8.44	48.29	74.00	-25.71	Horizontal
3	9096.387	39.08	8.93	48.01	74.00	-25.99	Horizontal
4	10795.3494	37.39	12.07	49.46	74.00	-24.54	Horizontal
5	13968.246	37.46	13.84	51.30	74.00	-22.70	Horizontal
6	16940.4926	36.3	18.46	54.76	74.00	-19.24	Horizontal
7	17546.1933	37.13	17.82	54.95	74.00	-19.05	Horizontal

AV Result:

No.	Frequency	Reading Level	Correct Factor	Result	Limit	Margin	Remark
	[MHz]	[dBuV/m]	[dB]	[dBuV/m]	[dBuV/m]	[dB]	
1	16940.4926	27.40	18.46	45.86	54.00	-8.14	Horizontal
2	17546.1933	26.72	17.82	44.54	54.00	-9.46	Horizontal

Note: 1. Measurement = Reading Level + Correct Factor.

2. If peak result complies with AV limit, AV Result is deemed to comply with AV limit.

3. Peak result: Peak detector, RBW: 1 MHz, VBW: 3 MHz.

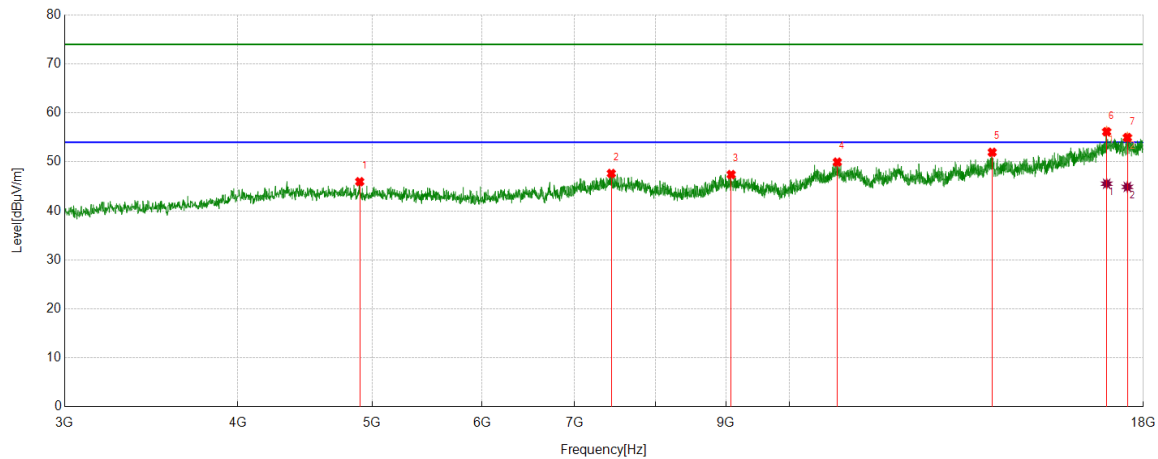
4. Average result: Peak detector, RBW: 1 MHz, VBW: 1/T MHz(refer to clause 7.1.).

5. For above 3GHz part, filter losses were only considered in the spurious frequency bands and the authorized band was not corrected for HPF losses.

6. Only the worst case emission was recorded, if it complies with the limit, the other emissions deemed to comply with the limit.



Test Mode	Channel	Polarization	Verdict
3DH5	MCH	Vertical	PASS



PK Result:

No.	Frequency	Reading Level	Correct Factor	Result	Limit	Margin	Remark
	[MHz]	[dBuV/m]	[dB]	[dBuV/m]	[dBuV/m]	[dB]	
1	4897.7372	40.61	5.35	45.96	74.00	-28.04	Vertical
2	7438.6798	39.01	8.63	47.64	74.00	-26.36	Vertical
3	9077.6347	38.38	9.03	47.41	74.00	-26.59	Vertical
4	10827.2284	37.87	12.09	49.96	74.00	-24.04	Vertical
5	14003.8755	37.61	14.35	51.96	74.00	-22.04	Vertical
6	16936.7421	37.82	18.43	56.25	74.00	-17.75	Vertical
7	17529.3162	37.13	17.91	55.04	74.00	-18.96	Vertical

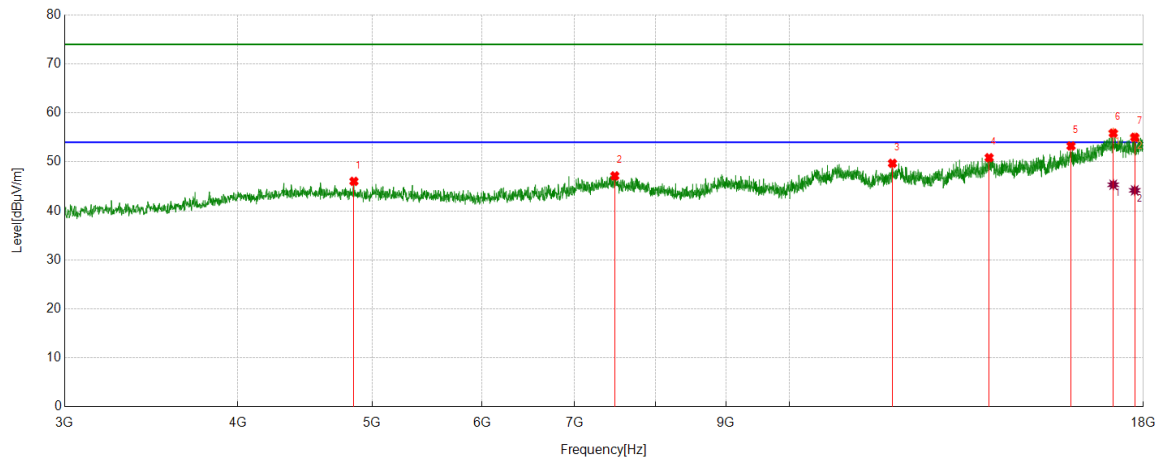
AV Result:

No.	Frequency	Reading Level	Correct Factor	Result	Limit	Margin	Remark
	[MHz]	[dBuV/m]	[dB]	[dBuV/m]	[dBuV/m]	[dB]	
1	16936.7421	27.11	18.43	45.54	54.00	-8.46	Vertical
2	17529.3162	26.99	17.91	44.90	54.00	-9.10	Vertical

- Note: 1. Measurement = Reading Level + Correct Factor.
2. If peak result complies with AV limit, AV Result is deemed to comply with AV limit.
3. Peak result: Peak detector, RBW: 1 MHz, VBW: 3 MHz.
4. Average result: Peak detector, RBW: 1 MHz, VBW: 1/T MHz(refer to clause 7.1.).
5. For above 3GHz part, filter losses were only considered in the spurious frequency bands and the authorized band was not corrected for HPF losses.
6. Only the worst case emission was recorded, if it complies with the limit, the other emissions deemed to comply with the limit.



Test Mode	Channel	Polarization	Verdict
3DH5	HCH	Horizontal	PASS



PK Result:

No.	Frequency	Reading Level	Correct Factor	Result	Limit	Margin	Remark
	[MHz]	[dBuV/m]	[dB]	[dBuV/m]	[dBuV/m]	[dB]	
1	4850.8564	40.58	5.45	46.03	74.00	-27.97	Horizontal
2	7481.8102	38.34	8.80	47.14	74.00	-26.86	Horizontal
3	11866.1083	37.30	12.40	49.70	74.00	-24.30	Horizontal
4	13932.6166	36.42	14.44	50.86	74.00	-23.14	Horizontal
5	15963.4954	37.30	15.95	53.25	74.00	-20.75	Horizontal
6	17122.3903	37.91	17.99	55.90	74.00	-18.10	Horizontal
7	17744.9681	36.95	17.98	54.93	74.00	-19.07	Horizontal

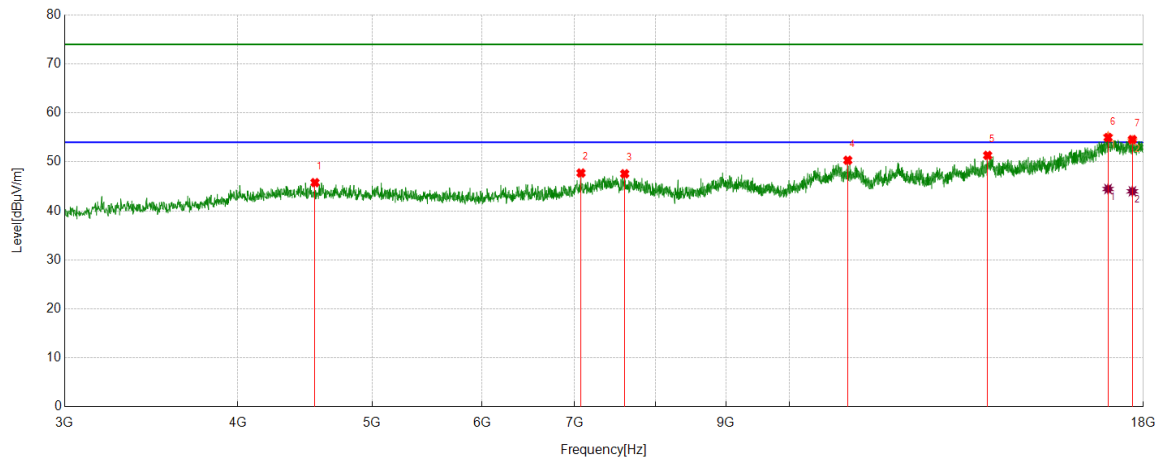
AV Result:

No.	Frequency	Reading Level	Correct Factor	Result	Limit	Margin	Remark
	[MHz]	[dBuV/m]	[dB]	[dBuV/m]	[dBuV/m]	[dB]	
1	17122.3903	27.35	17.99	45.34	54.00	-8.66	Horizontal
2	17744.9681	26.21	17.98	44.19	54.00	-9.81	Horizontal

- Note: 1. Measurement = Reading Level + Correct Factor.
2. If peak result complies with AV limit, AV Result is deemed to comply with AV limit.
3. Peak result: Peak detector, RBW: 1 MHz, VBW: 3 MHz.
4. Average result: Peak detector, RBW: 1 MHz, VBW: 1/T MHz(refer to clause 7.1.).
5. For above 3GHz part, filter losses were only considered in the spurious frequency bands and the authorized band was not corrected for HPF losses.
6. Only the worst case emission was recorded, if it complies with the limit, the other emissions deemed to comply with the limit.



Test Mode	Channel	Polarization	Verdict
3DH5	HCH	Vertical	PASS



PK Result:

No.	Frequency	Reading Level	Correct Factor	Result	Limit	Margin	Remark
	[MHz]	[dBuV/m]	[dB]	[dBuV/m]	[dBuV/m]	[dB]	
1	4547.0684	40.12	5.65	45.77	74.00	-28.23	Vertical
2	7073.0091	39.46	8.27	47.73	74.00	-26.27	Vertical
3	7605.5757	38.93	8.65	47.58	74.00	-26.42	Vertical
4	11016.6271	37.81	12.52	50.33	74.00	-23.67	Vertical
5	13898.8624	36.97	14.36	51.33	74.00	-22.67	Vertical
6	16976.1220	36.55	18.64	55.19	74.00	-18.81	Vertical
7	17675.5844	36.54	17.82	54.36	74.00	-19.64	Vertical

AV Result:

No.	Frequency	Reading Level	Correct Factor	Result	Limit	Margin	Remark
	[MHz]	[dBuV/m]	[dB]	[dBuV/m]	[dBuV/m]	[dB]	
1	16976.1220	25.83	18.64	44.47	54.00	-9.53	Vertical
2	17675.5844	26.18	17.82	44.00	54.00	-10.00	Vertical

- Note: 1. Measurement = Reading Level + Correct Factor.
2. If peak result complies with AV limit, AV Result is deemed to comply with AV limit.
3. Peak result: Peak detector, RBW: 1 MHz, VBW: 3 MHz.
4. Average result: Peak detector, RBW: 1 MHz, VBW: 1/T MHz(refer to clause 7.1.).
5. For above 3GHz part, filter losses were only considered in the spurious frequency bands and the authorized band was not corrected for HPF losses.
6. Only the worst case emission was recorded, if it complies with the limit, the other emissions deemed to comply with the limit.

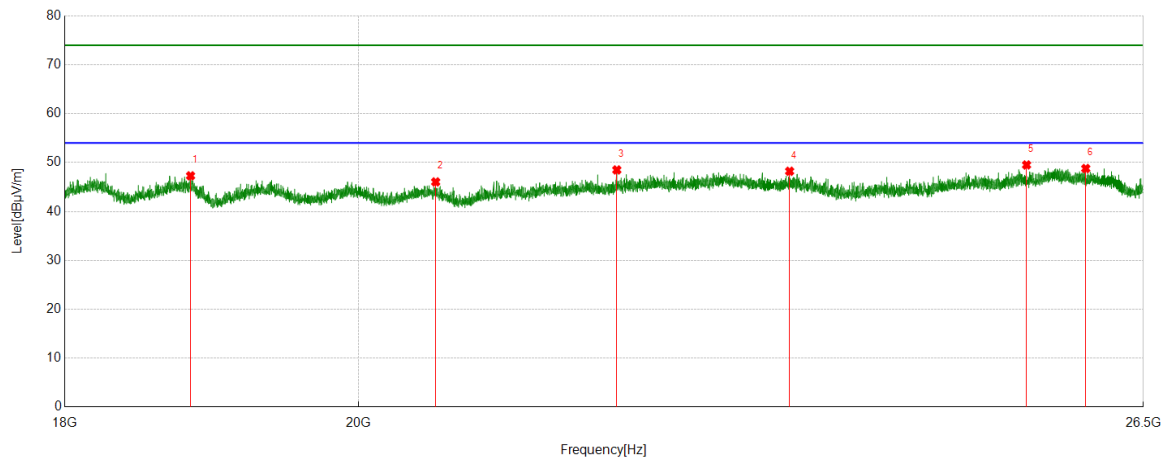


Part 3: 18GHz~26.5GHz

Antenna Type 2: External Dipole Antenna

SPURIOUS EMISSIONS 18GHz TO 26.5GHz (WORST-CASE CONFIGURATION)

Test Mode	Channel	Polarization	Verdict
DH5	HCH	Horizontal	PASS

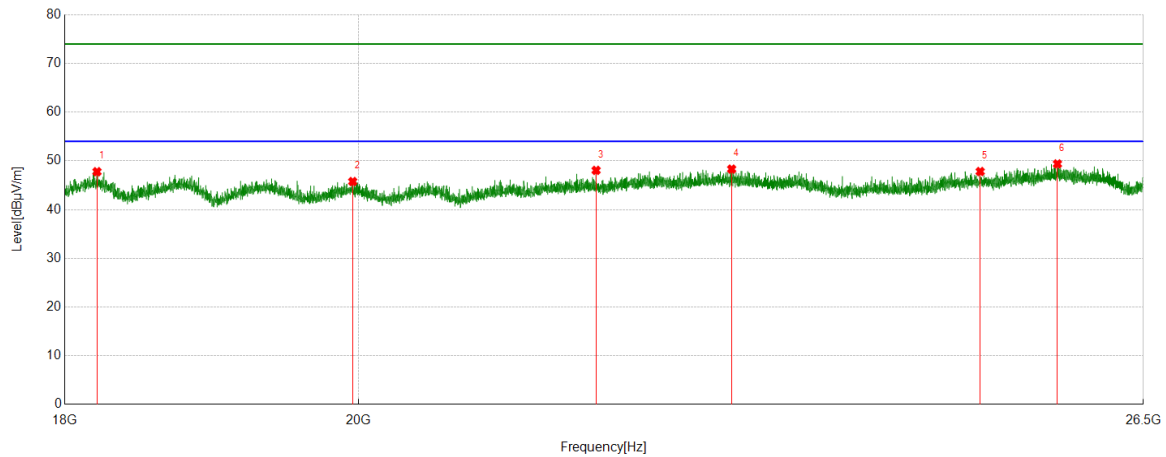


No.	Frequency	Reading Level	Correct Factor	Result	Limit	Margin	Remark
	[MHz]	[dBuV/m]	[dB]	[dBuV/m]	[dBuV/m]	[dB]	
1	18831.3831	48.76	-1.47	47.29	74.00	-26.71	Peak
2	20561.3061	47.06	-1.02	46.04	74.00	-27.96	Peak
3	21940.9941	48.87	-0.38	48.49	74.00	-25.51	Peak
4	23343.6344	48.16	0.06	48.22	74.00	-25.78	Peak
5	25413.5914	49.31	0.20	49.51	74.00	-24.49	Peak
6	25958.4958	47.78	1.00	48.78	74.00	-25.22	Peak

Note: 1. If Peak Result complies with AV limit, AV Result is deemed to comply with AV limit.
2. Test setup: RBW: 1 MHz, VBW: 3 MHz, Sweep time: auto.
3. Measurement = Reading Level + Correct Factor.
4. Only the worst case emission was recorded, if it complies with the limit, the other emissions deemed to comply with the limit.



Test Mode	Channel	Polarization	Verdict
DH5	HCH	Vertical	PASS



No.	Frequency	Reading Level	Correct Factor	Result	Limit	Margin	Remark
	[MHz]	[dBuV/m]	[dB]	[dBuV/m]	[dBuV/m]	[dB]	
1	18209.971	49.23	-1.45	47.78	74.00	-26.22	Peak
2	19958.5959	46.71	-0.95	45.76	74.00	-28.24	Peak
3	21778.6279	48.55	-0.50	48.05	74.00	-25.95	Peak
4	22863.3363	47.61	0.70	48.31	74.00	-25.69	Peak
5	24994.4994	48.29	-0.48	47.81	74.00	-26.19	Peak
6	25696.6697	48.74	0.64	49.38	74.00	-24.62	Peak

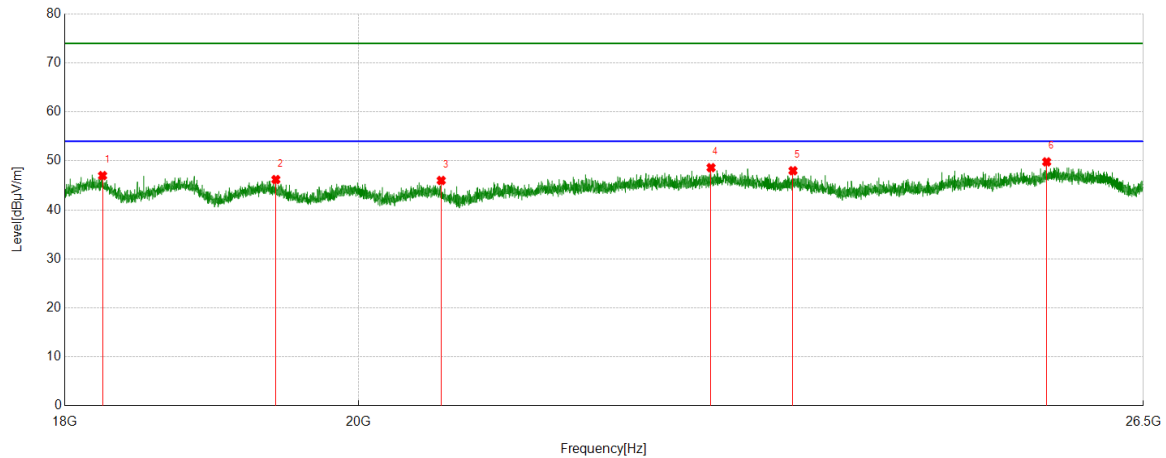
- Note: 1. If Peak Result complies with AV limit, AV Result is deemed to comply with AV limit.
2. Test setup: RBW: 1 MHz, VBW: 3 MHz, Sweep time: auto.
3. Measurement = Reading Level + Correct Factor.
4. Only the worst case emission was recorded, if it complies with the limit, the other emissions deemed to comply with the limit.



Antenna Type 1: PCB Antenna

SPURIOUS EMISSIONS 18GHz TO 26.5GHz (WORST-CASE CONFIGURATION)

Test Mode	Channel	Polarization	Verdict
DH5	HCH	Horizontal	PASS



No.	Frequency	Reading Level	Correct Factor	Result	Limit	Margin	Remark
	[MHz]	[dBuV/m]	[dB]	[dBuV/m]	[dBuV/m]	[dB]	
1	18246.5247	48.43	-1.44	46.99	74.00	-27.01	Peak
2	19416.2416	47.46	-1.27	46.19	74.00	-27.81	Peak
3	20602.1102	47.04	-1.04	46.00	74.00	-28.00	Peak
4	22695.0195	48.09	0.53	48.62	74.00	-25.38	Peak
5	23371.6872	48.00	-0.01	47.99	74.00	-26.01	Peak
6	25597.2097	49.31	0.49	49.80	74.00	-24.20	Peak

Note: 1. If Peak Result complies with AV limit, AV Result is deemed to comply with AV limit.
2. Test setup: RBW: 1 MHz, VBW: 3 MHz, Sweep time: auto.
3. Measurement = Reading Level + Correct Factor.
4. Only the worst case emission was recorded, if it complies with the limit, the other emissions deemed to comply with the limit.