

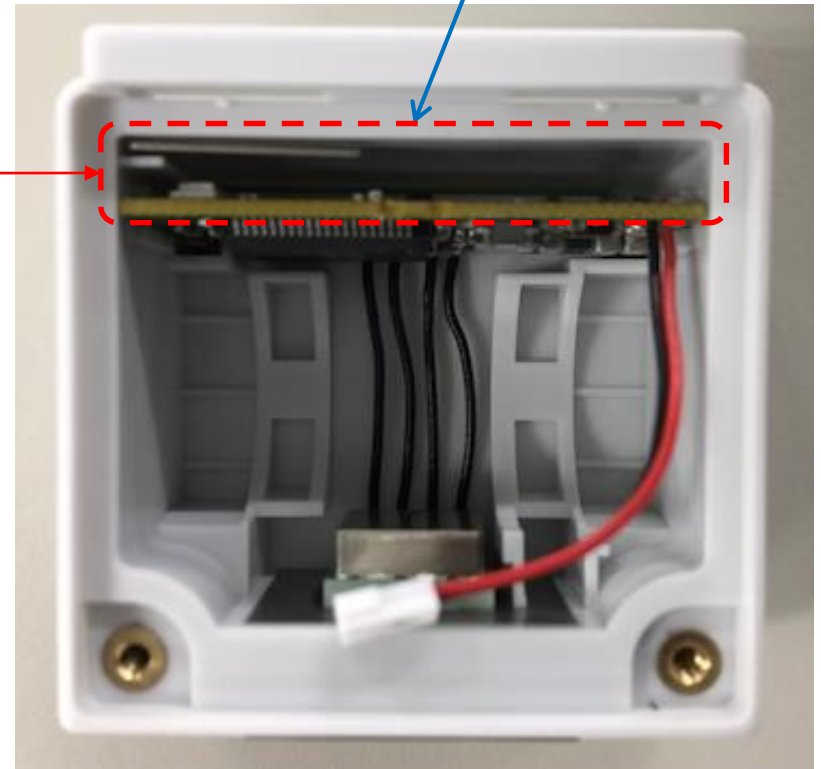
## LBAC0ZZ1LZ Internal Photo (1)

Back side (Cover side)

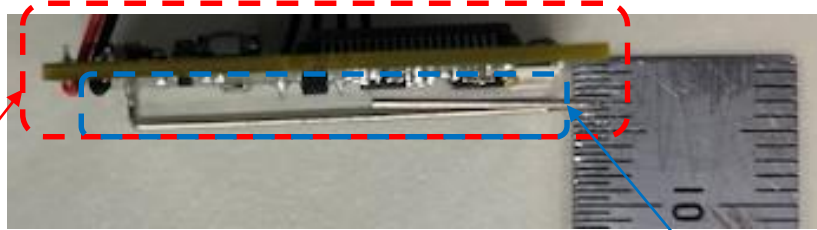


Internal

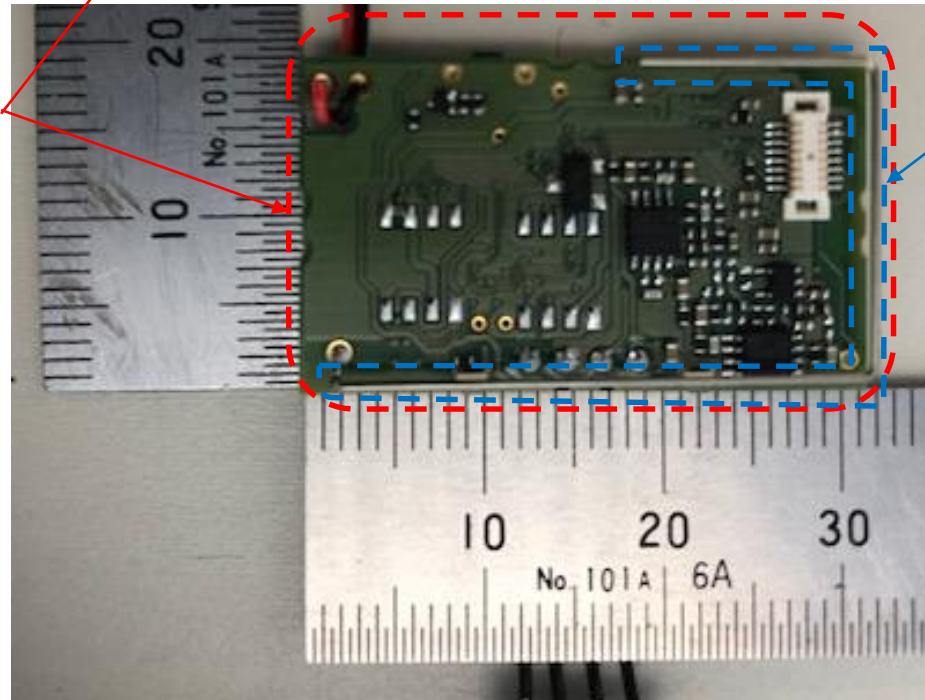
Antenna position



## LBAC0ZZ1LZ Internal Photo (2)



Width : 31.4mm  
Height : 18.5mm  
Depth : 5.4mm

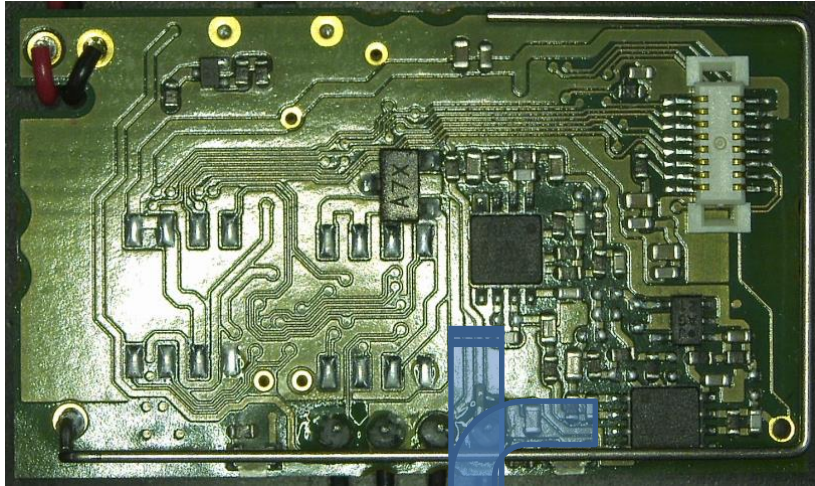


Antenna position

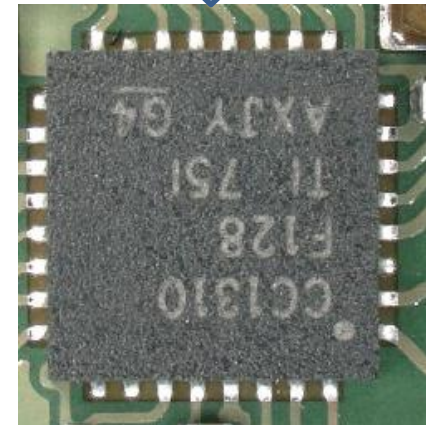
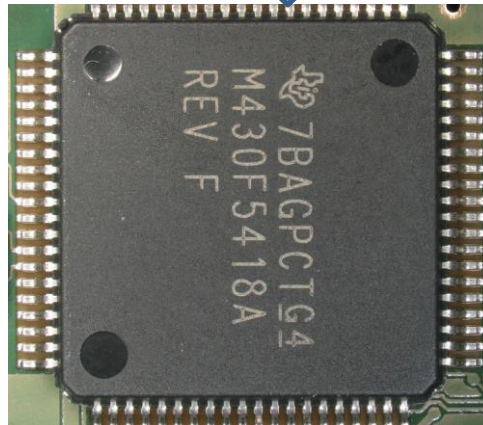
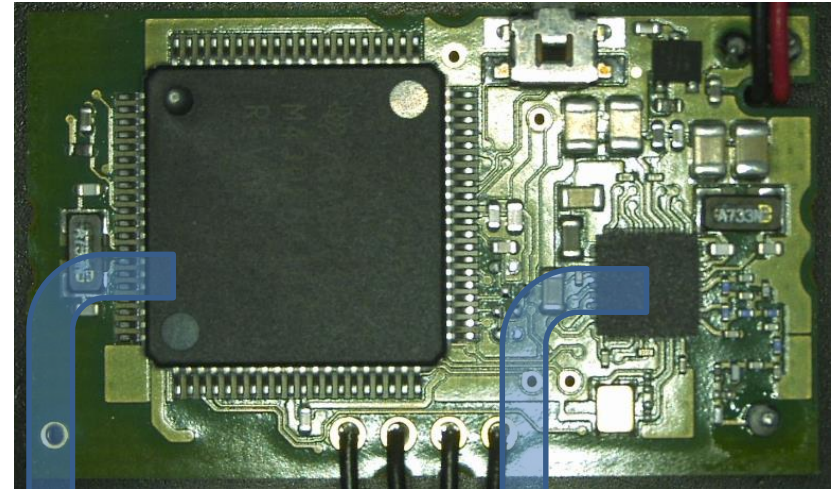
# LBAC0ZZ1LZ Internal Photo (3)

## Component mounting board

Front Side



Back Side

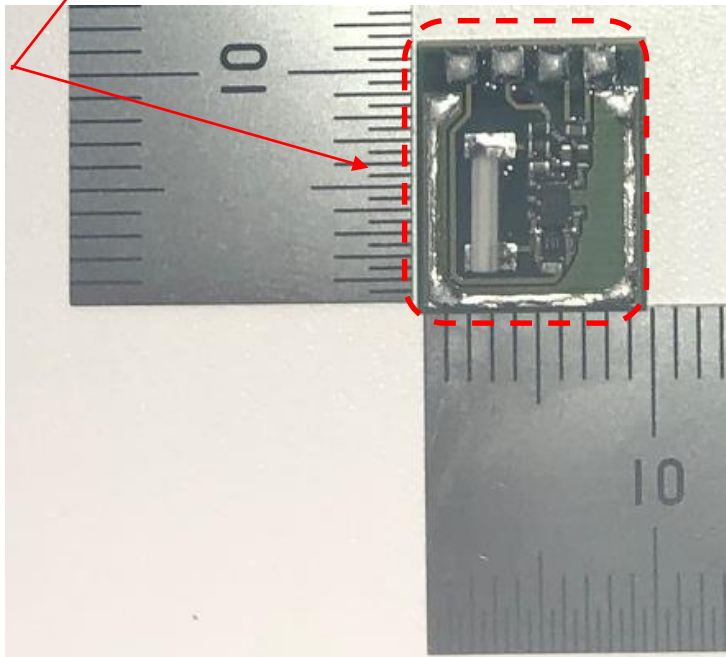


## LBAC0ZZ1LZ Internal Photo (4)

### Sensor board



Width : 10.0mm  
Height : 11.5mm  
Depth : 3.9mm



## LBAC0ZZ1LZ Note

Mass-produced product



Engineering prototype



The above two types have the same RF performance.  
Engineering Prototype is used only for testing, and only Mass-produced product is in the final product state