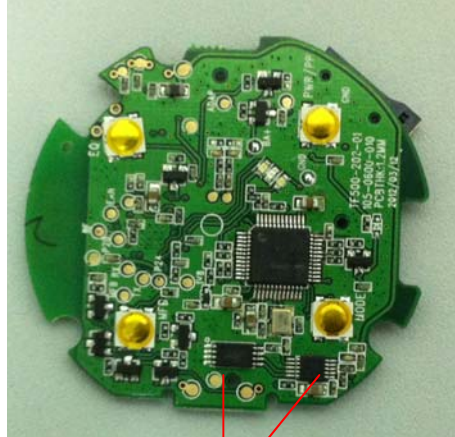
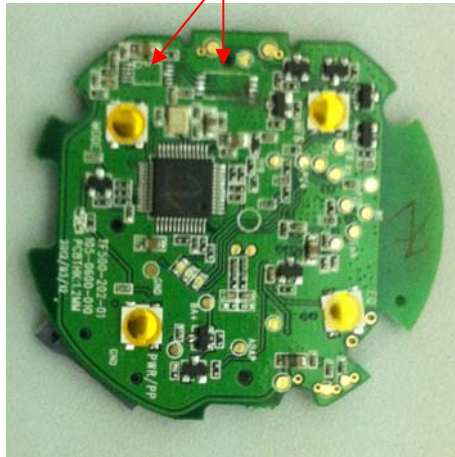


Difference Of Models

The there Models as:TF500,BH-X5 and DT120S.They are same PCB Layout and material,but with different features(to see the External photos).The other difference is the PCB of TF500 and BH-X5 removed FM and Buzzer modules from DT120S PCB.Just like the arrows specify.To see the photos as follow:



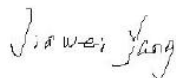
DT120S



TF500 and BH-X5

Company Name: GuangZhou LIWEI Electronics Co.,Ltd

Contact Name/Title: JiaWei Yang/Manager



Signature

Date:2012-08-28