

View of the EUT [Prüflingsansicht]

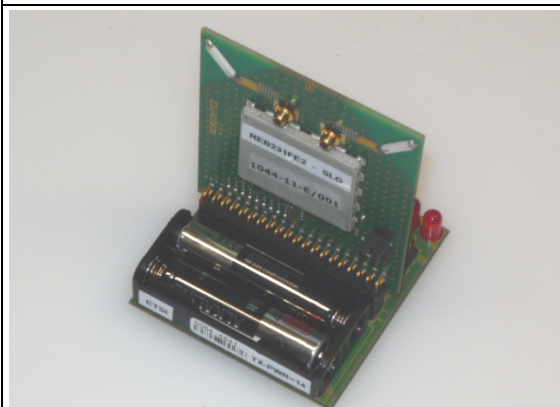


Figure 1: Controller base board (CBB) with connected radio extension board (REB231FE2)
[Controller Base Board (CBB) mit aufgestecktem Radio Extension Board (REB231FE2)]

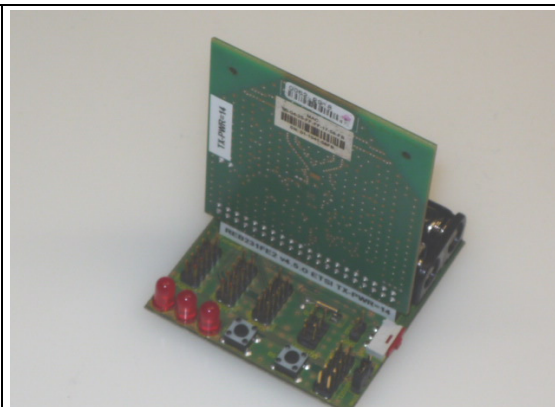


Figure 2: Controller base board (CBB) with connected radio extension board (REB231FE2)
[Controller Base Board (CBB) mit aufgestecktem Radio Extension Board (REB231FE2)]



Figure 3: Top side of radio extension board (REB231FE2)
[Oberseite des Radio Extension Boards (REB231FE2)]



Figure 4: Bottom side of radio extension board (REB231FE2)
[Unterseite des Radio Extension Boards (REB231FE2)]

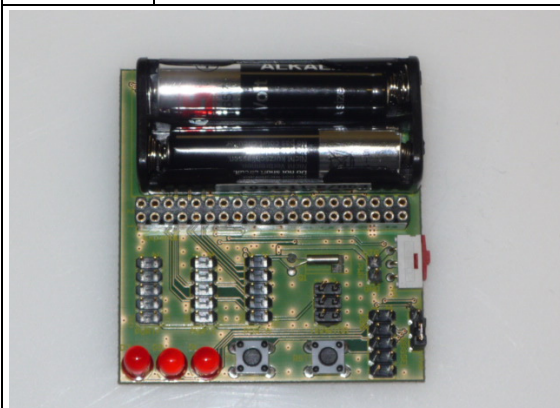


Figure 5: Top side of controller base board (CBB)
[Oberseite des Controller Base Board (CBB)]

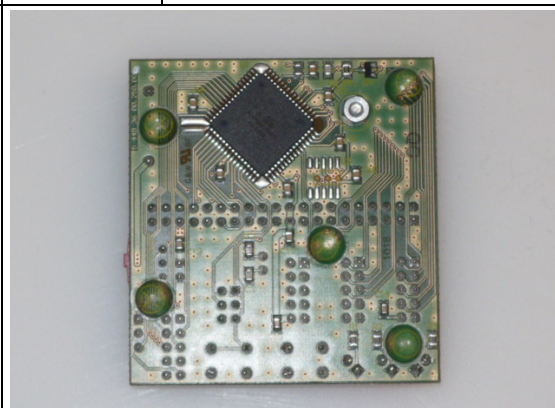


Figure 6: Bottom side of controller base board (CBB)
[Unterseite des Controller Base Board (CBB)]

View of the EUT [Prüflingsansicht]

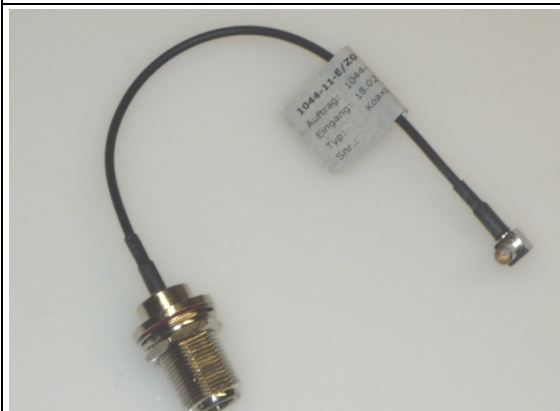


Figure 7: Antenna connection line
[Antennenanschlussleitung]

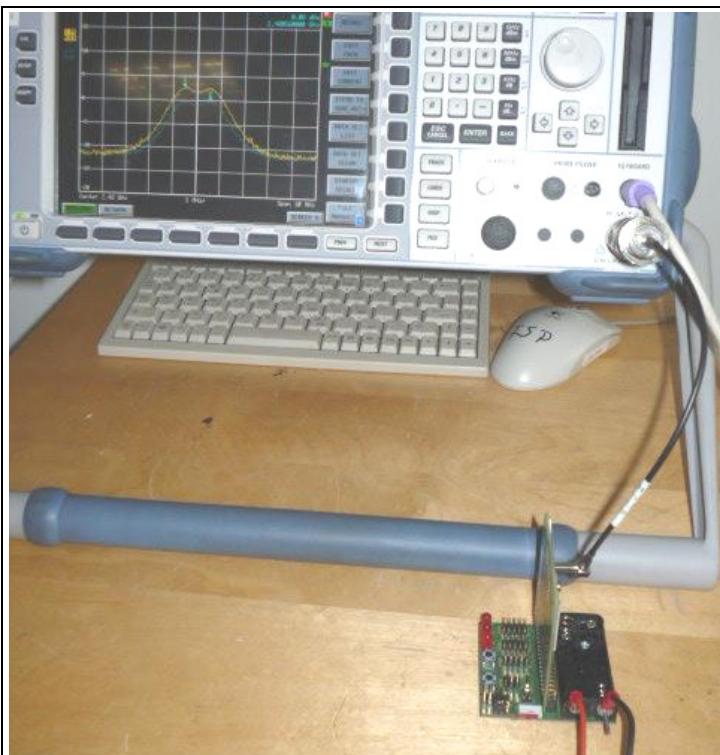


Figure 8: Measurement set-up for conducted measurement
acc. to following sections of the report 1044-11-EE-11-PB002: 4.1.1; 4.1.2; 4.2; 4.3; 4.4; 4.5.4
and 4.5.5

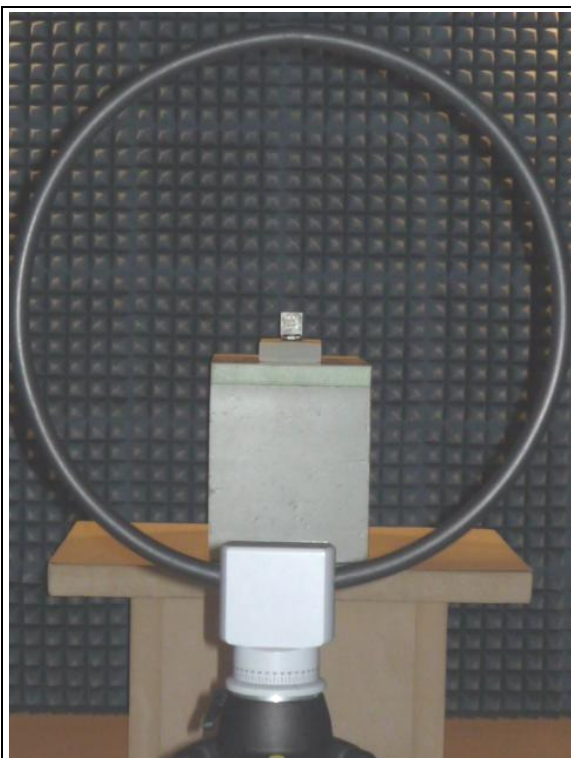


Figure 9: Measurement set-up for radiated measurement < 30 MHz
acc. following sections of the report 1044-11-EE-11-PB002: 4.5.1

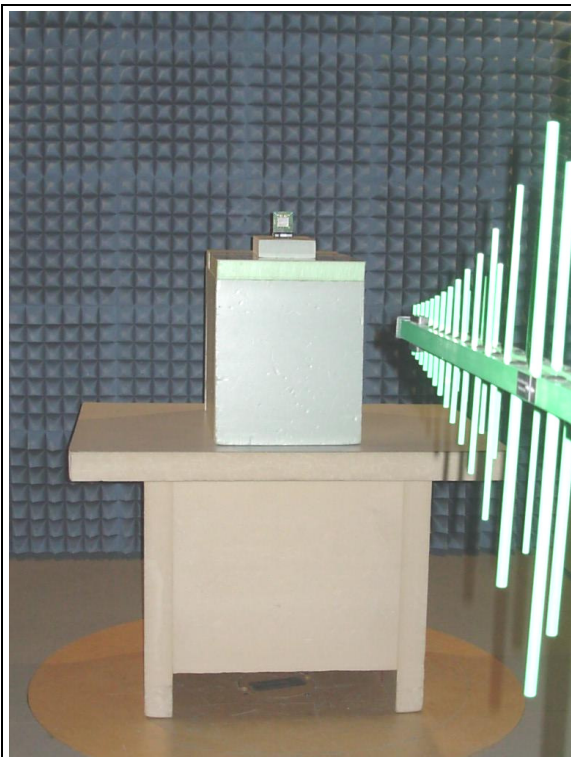


Figure 10: Measurement set-up for radiated measurement > 30 MHz and < 1 GHz
acc. following sections of the report 1044-11-EE-11-PB002: 4.5.2 and 4.6.1



Figure 11: Measurement set-up for radiated measurement > 1 GHz
acc. following sections of the report 1044-11-EE-11-PB002: 4.5.3; 4.5.4 and 4.6.2