



View of the EUT

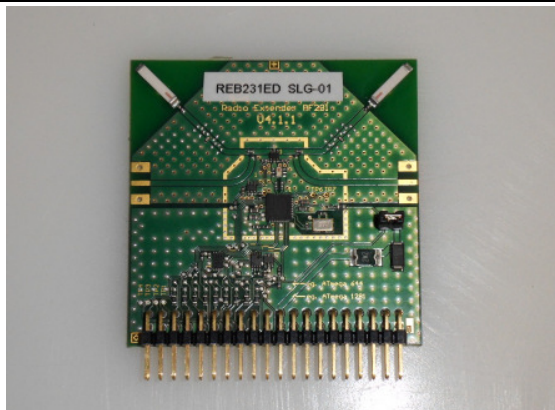


Figure 1: Top side of radio extension board (REB231ED)



Figure 2: Bottom side of radio extension board (REB231ED)

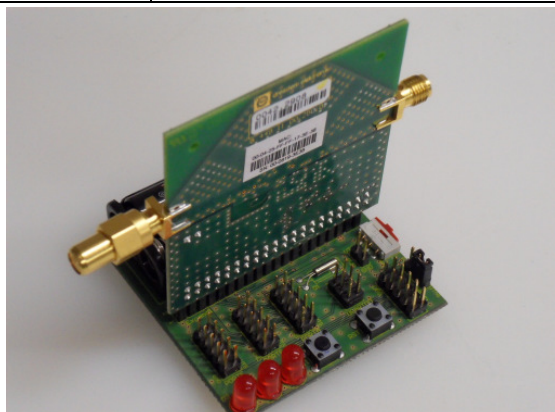


Figure 3: Controller base board (CBB) with connected radio extension board (REB231ED)



Figure 4: Top side of controller base board (CBB)

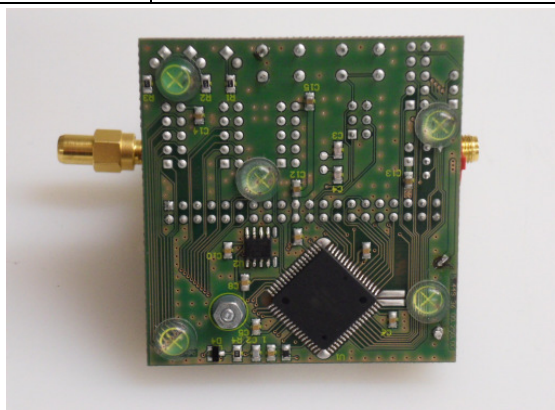


Figure 5: Bottom side of controller base board (CBB)



Figure 6: Type label (REB231ED)

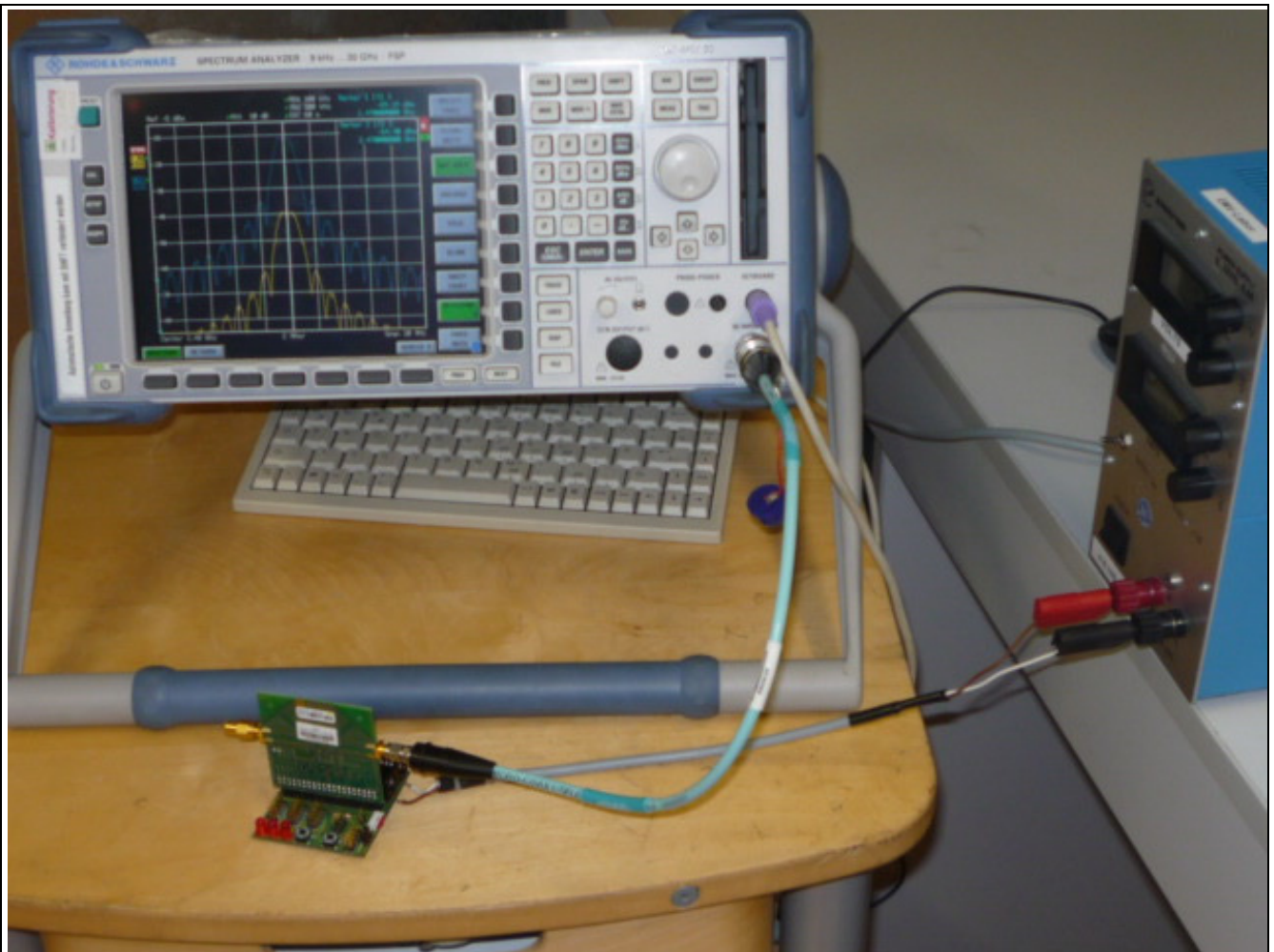


Figure 7: Measurement set-up for conducted measurement acc. to following sections of the report 1171-10-EE-10-PB001: 4.1.1; 4.1.2; 4.2; 4.3; 4.4 and 4.5.3

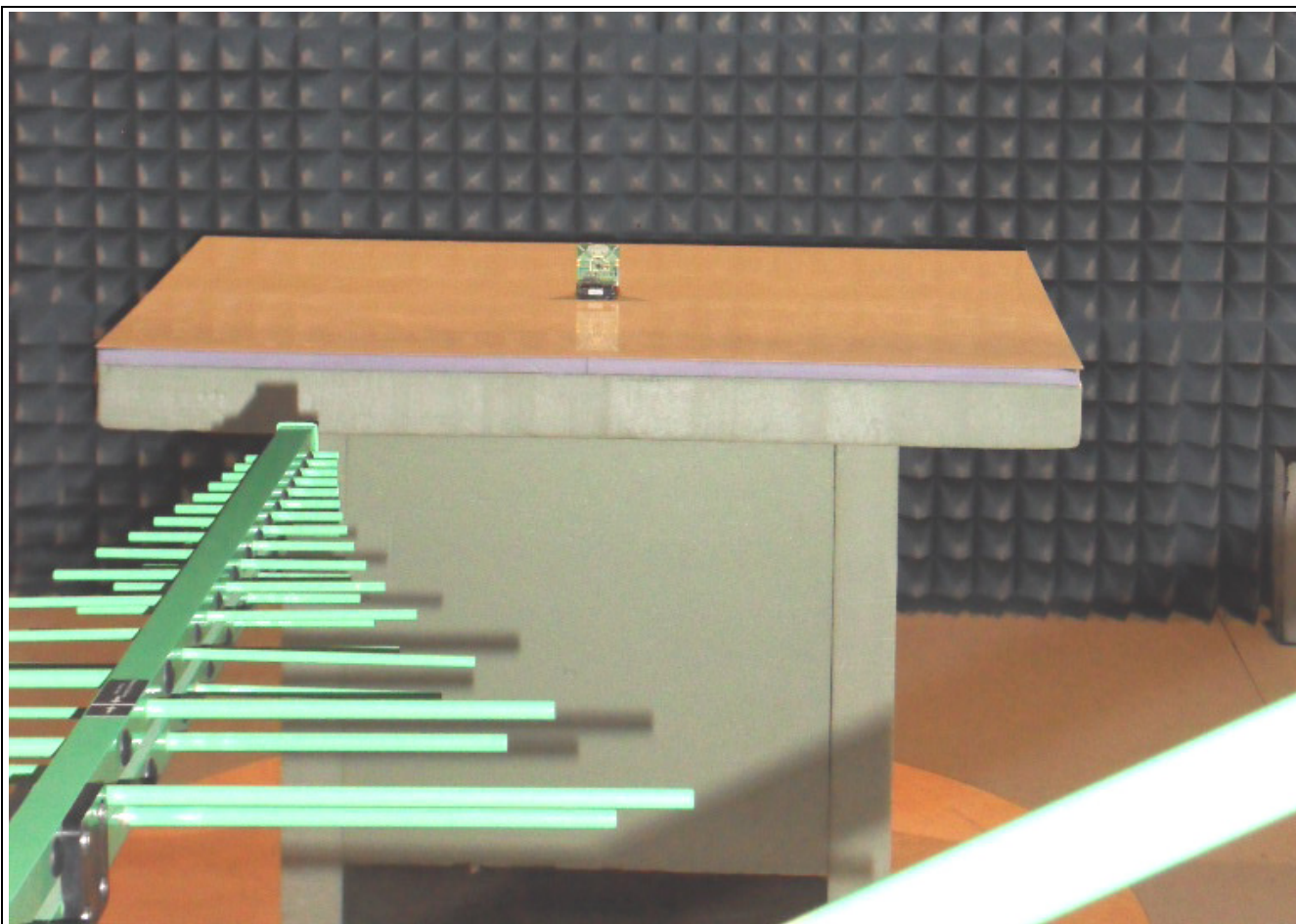


Figure 8: Measurement set-up for radiated measurement < 1 GHz acc. following sections of the report 1171-10-EE-10-PB001: 4.5.1 and 4.6.1

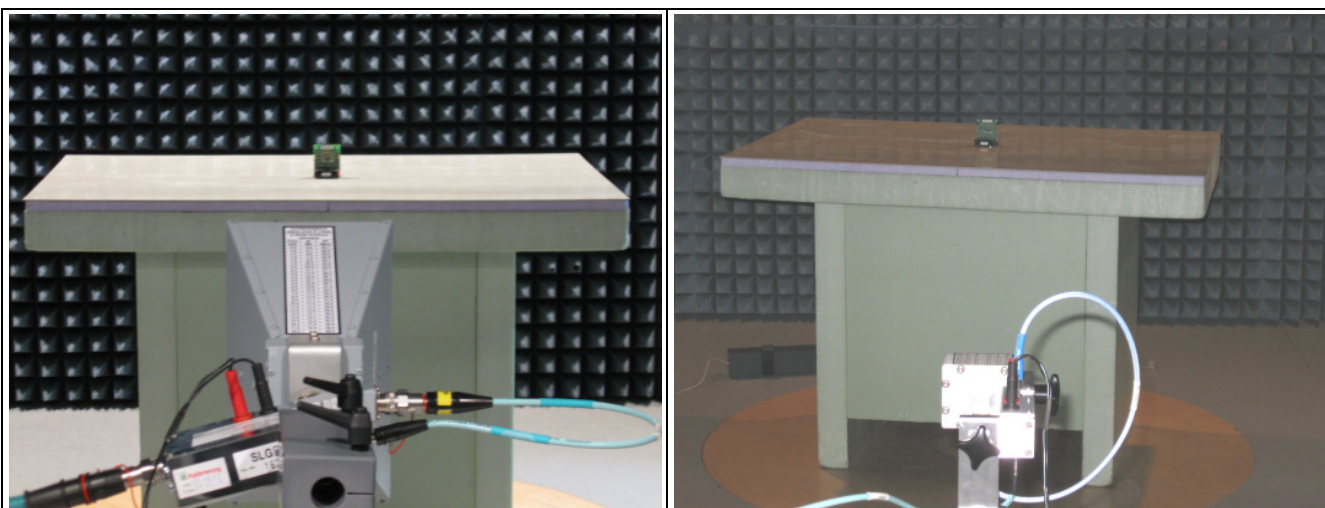


Figure 9: Measurement set-up for radiated measurement > 1 GHz acc. following sections of the report 1171-10-EE-10-PB001: 4.5.2 and 4.6.2

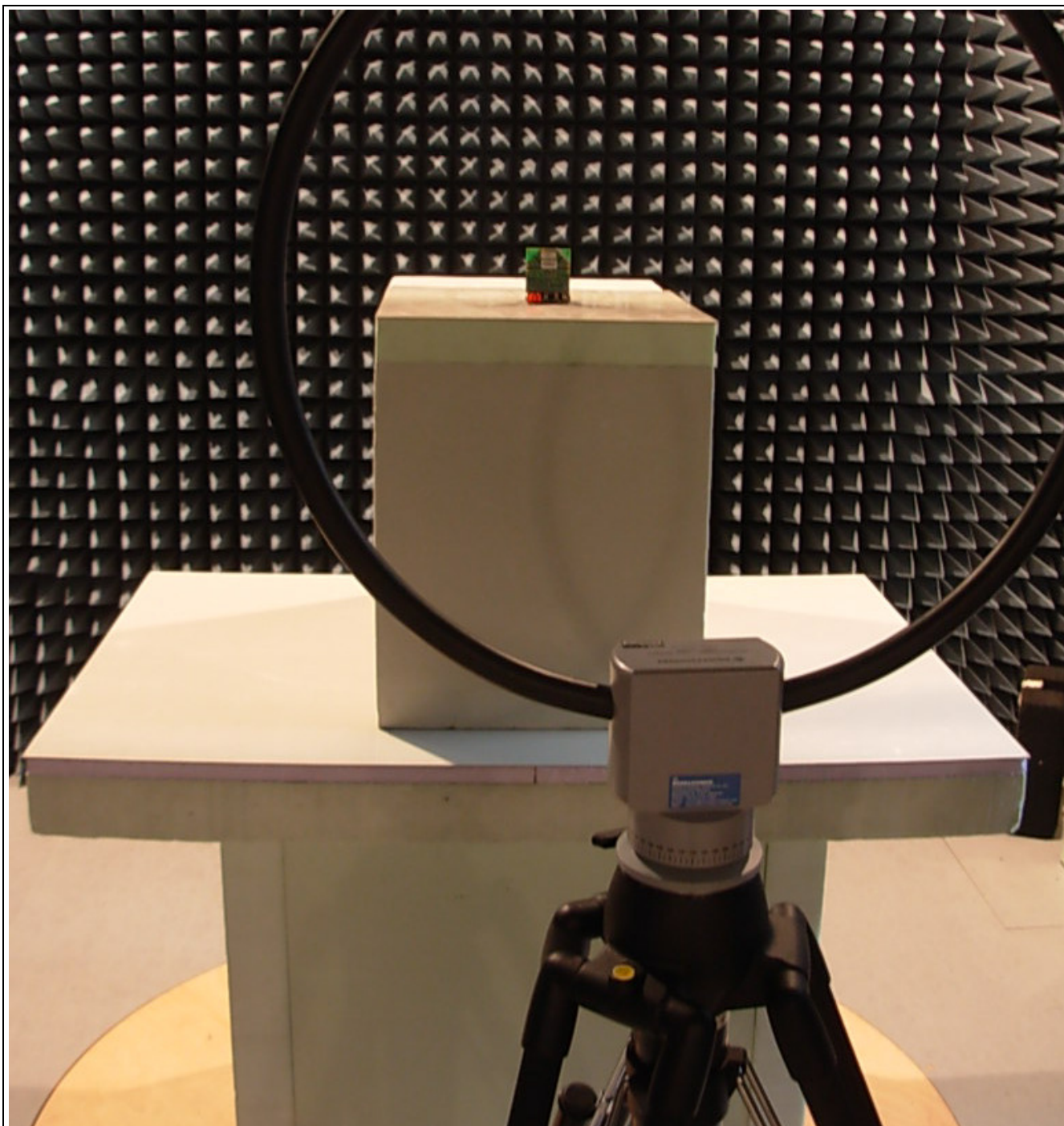


Figure 10: Measurement set-up for radiated measurement < 30 MHz acc. following sections of the report 1171-10-EE-10-PB001: 4.7