

CGM System: What you need to get started.

Monitor



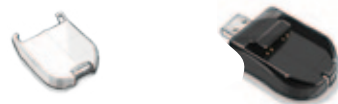
Wall Adapter



USB Extension Cable

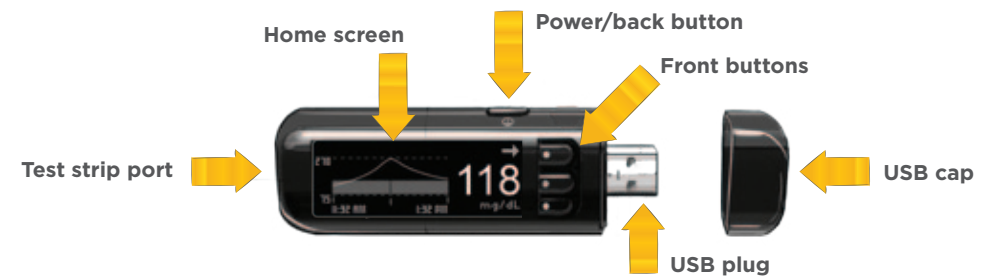


Transmitter and its charger



Sterile Sensor Guide and an Insertion Tool

CGM System: Monitor Features



Getting Started: Monitor and Transmitter Charging

The USB extension cable is optional and may be used for convenience if desired.

1. After removing the protective cap from the USB plug, insert the monitor's USB plug into the wall adapter.
 - The orange light on the test strip port will blink while it is charging.
2. Plug the wall adapter into an outlet.
 - The light will turn off after it has a full charge.

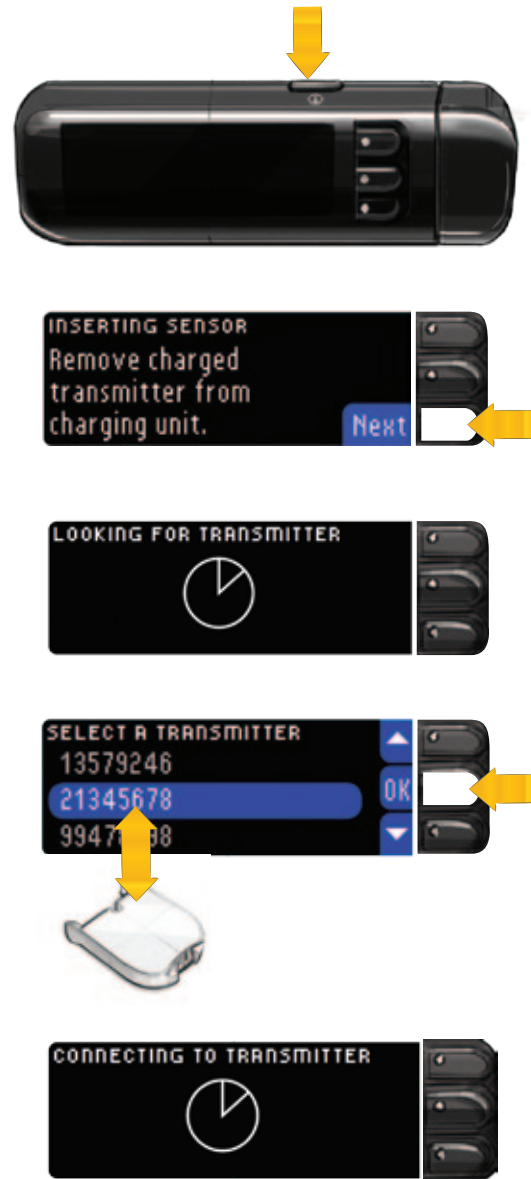


1. Slide the transmitter into the bay of the charger, insert the charger's USB plug into the wall adapter.
 - The green light on the charger will blink while it is charging.
2. Plug the wall adapter into an outlet.
 - The light will stay on after it has a full charge.



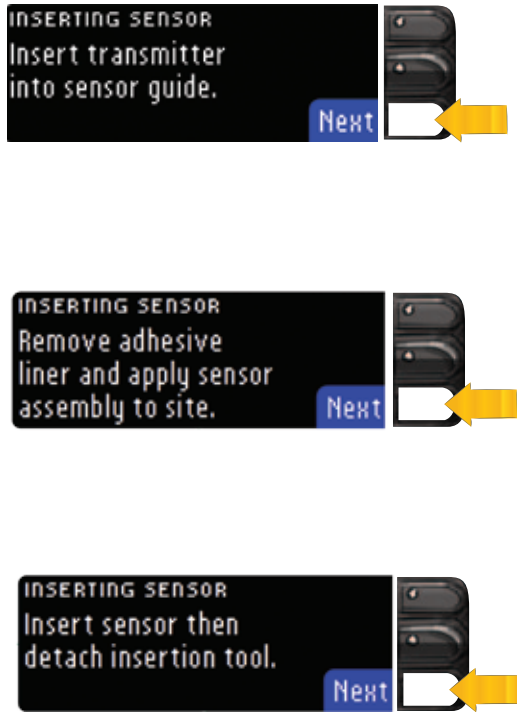
Getting Started: Pairing the Monitor and Transmitter

1. **Press and hold the power/back button for 2 seconds to turn on the monitor.**
2. **Lift to remove the fully charged transmitter from its charging unit.**
3. **Wait for the monitor to find the transmitter (it may take as long as one minute).**
4. **Use the UP and DOWN buttons to find the number on the monitor screen that matches the number on the top of the charged transmitter, and press OK.**
5. **Wait for the monitor to connect to the transmitter.**



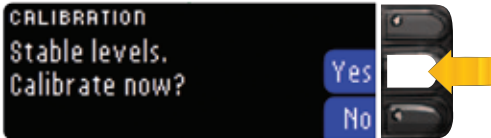
Getting Started: Wearing a Sensor
Use the monitor screens to help guide you.

1. **Remove the sensor guide from its sterile packaging and insert the transmitter into its slot in the sensor guide.**
2. **Turn the sensor assembly over and remove the adhesive liner before putting the sensor assembly on your skin.**
3. **Insert the sensor (a CLICK sound means the sensor was inserted).**

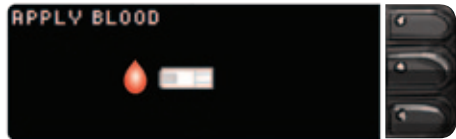


Getting Started: Calibrating a Sensor
In order for the monitor to properly display your glucose levels, it must be calibrated with fingertip testing at least every 12 hours.

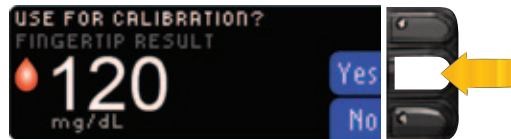
- 1. Choose to calibrate now or later.**
- If you are ready to calibrate, press YES and insert a test strip.



- 2. After performing a prick of the tip of your finger, touch the tip of the test strip to the drop of blood and hold it there until the monitor beeps and shows "ACCEPTED."**



- 3. Read your fingertip test result.**
- If you want to use this result to calibrate your monitor, press YES. If you do not wish to use it to calibrate, press NO.



- 4. Your continuous glucose reading will appear on the Home screen within 5 minutes of calibrating.**



Warnings:

This device complies with part 15 of the FCC Rules. Operation is subject to the following two conditions: (1) This device may not cause harmful interference, and (2) this device must accept any interference received, including interference that may cause undesired operation.

Caution:

Changes or modifications not expressly approved by the party responsible for compliance could void the user's authority to operate this equipment.

Caution - INVESTIGATIONAL DEVICE, LIMITED BY FEDERAL (OR UNITED STATES) LAW TO INVESTIGATIONAL USE.