



Bayer HealthCare
Diabetes Care Division

Bayer CGMM01 Antenna Information

Antenna Information

The CGMM01 transmits using a loop antenna. The antenna is fabricated on the RF daughter PCB as shown in Figure 1 below and the Internal Photographs. Antenna impedance matching is provided by components C518, C519, C524 and The antenna is permanently affixed to the internal transmitter circuit board and it is not possible to fit alternative antennas to the device. As a short loop, the antenna is expected to provide a gain slightly less than a half-wave dipole or 0 dBd.

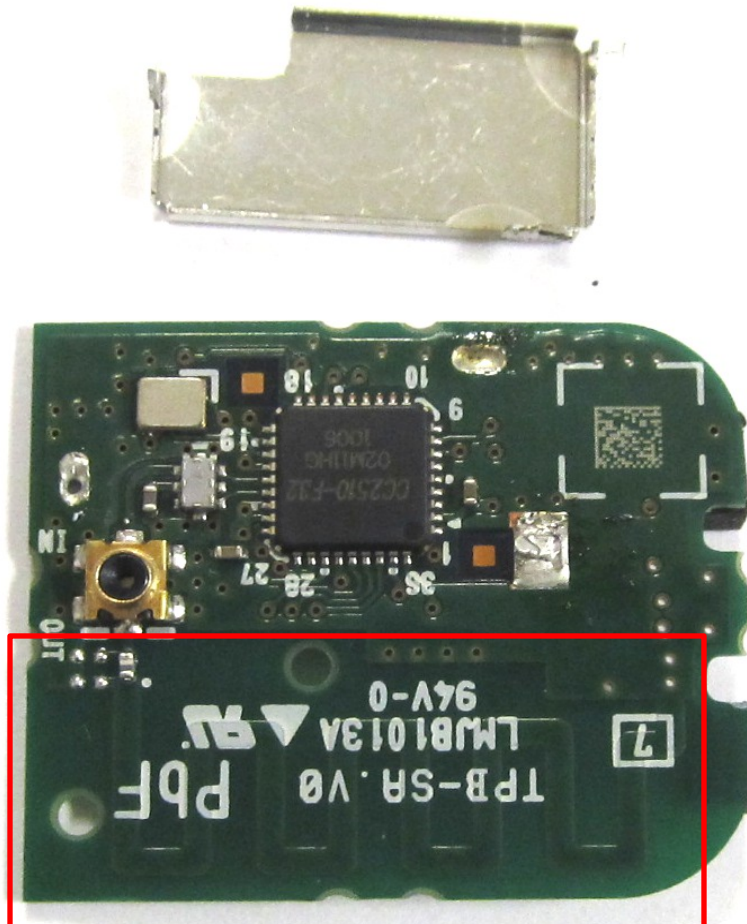


Figure 1 Antenna Detail