

INSTRUCTION MANUAL

READ THE INSTRUCTION BEFORE INSTALLATION

AEC-3500LT□ AEC-3500LT2□

. Specifications.

power source; 110-130VAC. 60Hz

lighting load; **AEC-3500LT□ AEC-3500LT2□** 36Wx2

1. Installation method

AEC-3500LT□

- 1 Loose the screw, extend the Delta frame supporter (a) on the ground, fasten the screw, **(see fig.1)**;
- 2 Install the lamp (b) onto the Delta frame supporter (a); The height of the supporter can be adjusted, the Max. height reaches 1.8m; **(see fig.2)**;

AEC-3500LT2□

- 1 Loose the screw, extend the Delta frame supporter (a) on the ground, fasten the screw, **(see fig.1)**;
- 2 Install the lamps and handles on the bar, like (b), **(see fig.3)**;
- 3 Install the lamp (b) onto the Delta frame supporter (a); The height of the supporter can be adjusted, the Max. height reaches 1.8m; **(see fig.4)**
- 4 The lamps and handles can be used separately.

2. Mounting Position

- The rear and two sides of the lamp shall keep a distance of 50mm away from the mounting surface;
- The distance between front glass and the surface lighted must be $\geq 0.5\text{m}$;
- The place where the lamp is mounted shall be kept away from water drown.

3. Lamp tube fitting

Unscrew the bolt and open the glass holder. Turn the pin slots of the tube holders on both ends vertically, **(see fig.5)**; While the tube pins are in the tube holders on both ends, turn the tube at 90° **(see fig.6)**. Close the glass holder with the bolt. The tube can not be fitted with bare hands.

4. Caution:

- 1 This lamp must be installed by a qualified electrician. Switch off power before installation to avoid electric shock.;
- 2 If the shielding glass is cracked, or the lamp is not working, shall be disposed by a qualified electrician;
- 3 This lamp can not be used under a sealed space or inflammable, explosive surroundings;
- 4 Use after verification of the input voltage of this lamp is in compliance with the local voltage;
- 5 An interval of 1 minute is required, while restarting the lamp;
- 6 Switch off power before cleaning the lamp;
- 7 Those does not belongs to this lamp, can not be remained inside the lamp;
- 8 This shall be deemed as normal, while the initial lumen is inadequate, once switching on power; After 3—5minutes light on, the lumen will reach the normal level.

5.warning:

This product may cause interference to radio equipment and should not be installed near maritime safety communications equipment or other critical navigation or communication equipment operating between 0.45- 30 MHz.

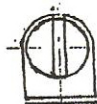


Fig.5

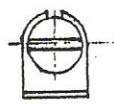


Fig.6

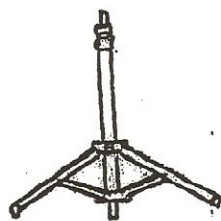


Fig.1

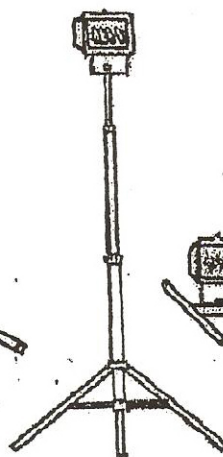


Fig.2

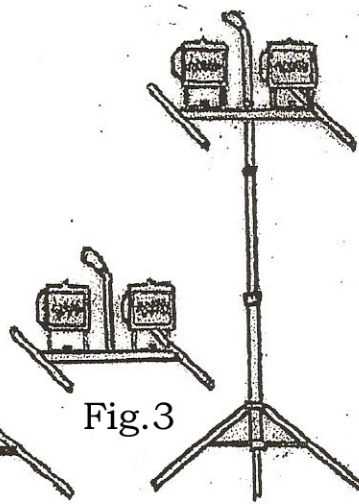


Fig.3

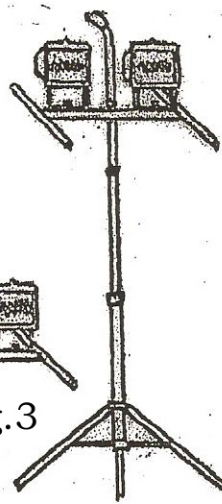


Fig.4

AEC-3500P INSTRUCTION MANUAL

READ THE INSTRUCTION BEFORE INSTALLATION

. Specifications.

power source; 110-130VAC. 60Hz

lighting load; 36W

1. Installation method

Insert the standing support tube (1) into (2), make sure all holes meet, screw the bolt (3) into (1), and fasten the bolt. (see fig.1)

2. Mounting Position

- The rear and two sides of the lamp shall keep a distance of 50mm away from the mounting surface;
- The distance between front glass and the surface lighted must be $\geq 0.5m$;
- The place where the lamp is mounted shall be kept away from water drown.

3. Lamp tube fitting

Unscrew the bolt and open the glass holder. Turn the pin slots of the tube holders on both ends vertically, (see fig.2); While the tube pins are in the tube holders on both ends, turn the tube at 90° (see fig.3). Close the glass holder with the bolt. The tube can not be fitted with bare hands.

4. Caution:

- 1 This lamp must be installed by a qualified electrician. Switch off power before installation to avoid electric shock.;
- 2 If the shielding glass is cracked, or the lamp is not working, shall be disposed by a qualified electrician;
- 3 This lamp can not be used under a sealed space or inflammable, explosive surroundings;
- 4 Use after verification of the input voltage of this lamp is in compliance with the local voltage;
- 5 An interval of 1 minute is required, while restarting the lamp;
- 6 Switch off power before cleaning the lamp;
- 7 Those does not belongs to this lamp, can not be remained inside the lamp;
- 8 This shall be deemed as normal, while the initial lumen is inadequate, once switching on power; After 3—5minutes light on, the lumen will reach the normal level.

5. warning:

This product may cause interference to radio equipment and should not be installed near maritime safety communications equipment or other critical navigation or communication equipment operating between 0.45- 30 MHz



Fig.2



Fig.3



Fig.1