

Mimitakara® JAPAN

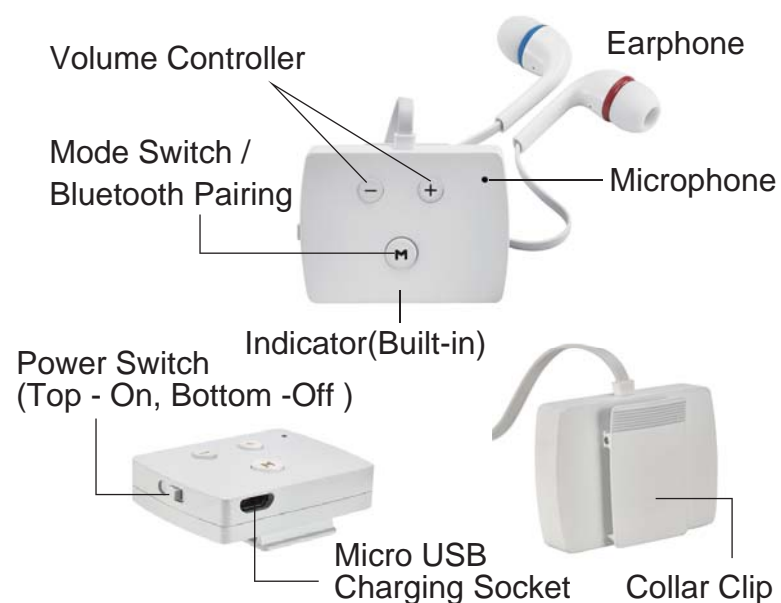
Full-Digital Bluetooth Hearing Aid

Accessories Listing



1. Bluetooth Hearing Aid with Earphone x 1
(Left- Blue / Right- Red)
2. Storage Case x 1
3. USB Adapter x 1
4. Micro USB cable x 1
5. Clearing Brush x 1

Features



Wearing Instruction

1. Insert the Red earphone into the Right ear and Blue earphone into the Left ear. **Insure that the ear buds are tightly fitted in the ear canal to avoid feedback noise.**



2. Turn the hearing aid on and start adjusting the volume to suit your hearing loss needs.
3. Clip the hearing aid on the collar/pocket to avoid the microphone from coming into contact with other moving parts that may amplify static sound. Ensure the microphone of the hearing aid is not covered by any obstructions to get the best quality sound to be received.



Powering On and Off the hearing aid

1. **To Turn On the hearing aid switch the switch to the Top.** Once properly turned on there will be an indicator that will flash Red and Blue three times. You will then hear your surrounding's sound gradually increasing from a low volume to a your preset volume. The Blue light will continuously flash which indicates that the hearing aid is working.



2. **To Turn Off the hearing aid switch the switch to the Bottom.** Once properly turned on there will be an indicator that will flash Red and Blue three times. You will then hear your surrounding's sound gradually fade from your preset volume.
- ※ The hearing aid will keep the last preset setting so when you power on the hearing aid again, it will automatically preset the same mode as the last time you turned off the hearing aid.
 - ※ When the battery is too low, the device may not be turn on. Please charge the device and then turn on the device.

How to Charge

1. Connect the provided micro USB cable's USB head to the USB adapter then plug the USB adapter to an AC outlet before connecting the micro USB head to the hearing aid for charging.
2. A Red light will light up on the hearing aid indicating its recharging, once fully charged the red light will be turned off automatically.



Warning:

- ※ Please don't recharge the hearing aid in high temperature environment or in direct sun light.
- ※ When RED light on the hearing aid start flashing, it indicates that hearing aid is almost out of power. We suggest you recharge the battery at this point to preserve the batteries long life span.

Rechargeable Battery

The built-in rechargeable battery will take an average of 3~4 hours to reach full capacity when using the provided USB adapter. **Once fully charged you can expect up to 15 hours of continuous use.**

We strongly recommend replacing the rechargeable battery once every 2 years in-order to get the best results from your hearing aid. Please do not attempt to replace the battery yourself as this may cause damage to your hearing aid, contact your supplier for battery replacement inquiries.

Adjusting the Volume

“Click” to adjust volume

There are 11 sets of volumes for your convenience. There is noticeable beep sound to allow you to know which level the setting is in currently.

- Click the \oplus : Increase volume
- Click the \ominus : Decrease volume

※ **Caution** : Listening at a high volume may damage your hearing further.

Noise Cancellation Mode Switching



Click: for Mode switching

There are two preset modes and will switch between each other when the mode button (indicated in between the 2 volume button's with the letter $\textcircled{\text{M}}$).

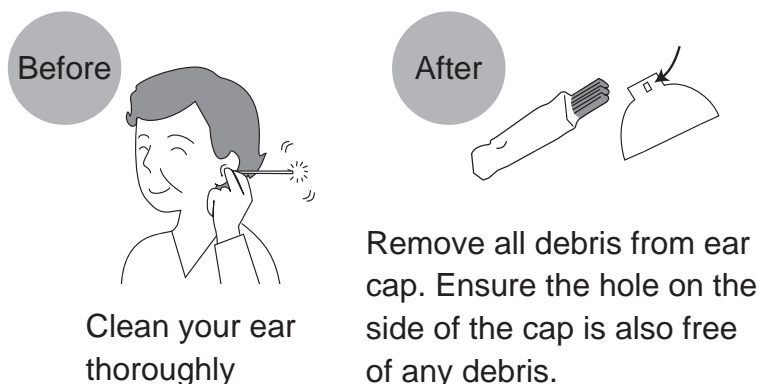
A single beep after clicking the M will indicate you are in Mode 1 and 2 beeps will indicate you are in Mode 2.

- Mode 1: Standard setting for common situation.
- Mode 2: Noise cancelling for reducing noise in crowded environments.

Notice

- ※ Please don't try any other methods that have not been written out in the manual we enclosed. It may cause injuries or damage the devices.
- ※ Please keep the hearing aid out of reach from child and people who don't know how to operate the hearing aid.
- ※ Please don't use it while you are sleeping. It may cause accidental physical damage or discomforts.
- ※ Please don't wear the hearing aid while doing physical exercise. It may cause damage to the hearing aid.
- ※ Keep the device dry at all times. Keep away from any sort of liquids.
- ※ Concerning the disposal of hearing aids or batteries, please obey the regulations of the local administration.

Before and After Each Use



Specification

Max. Output Sound Level Gain : $45 \pm 5\text{dB}$
Continuous Use : Up to 15 hours per charge
Operating Temperature : $+10^{\circ}\text{C} \sim +40^{\circ}\text{C}$
Humidity : 30~85% RH
Storage Temperature : $-10^{\circ}\text{C} \sim +60^{\circ}\text{C}$
Humidity : 30~85% RH
Size (L/W/H) : Approx. 44 x 13.6 x 32.5 mm
Weight : Approx. 22.2 g

Troubleshooting

Symptom	Solution
No sound	<ul style="list-style-type: none">• Turn on the power• Press “ + ” to increase level• Clean up ear cap• Check the earphone cable if break or not
No working after press any button	Check if there is any stuff stuck in
Cannot be charging	Make sure if USB adapter connects well
Cannot turn power on	<ul style="list-style-type: none">• Make sure to switch to the “Left” position and make sure the indicator light is correct.• Connect USB adapter to charge• If rechargeable battery is used for over 2 years, we suggest to use new one
The indicator doesn't light up	If there is no other function issue, please contact your supplier

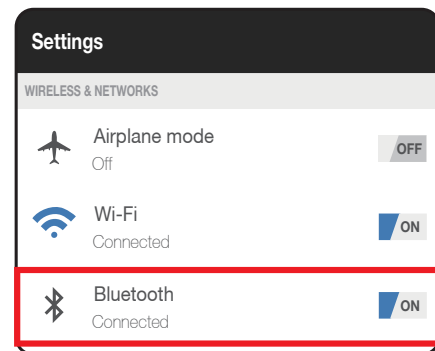
This device complies with Part 15 of the FCC rules standard. Operation is subject to the following two conditions:
(1) This device may not cause harmful interference, and
(2) This device must accept any interference received, including interference that may cause undesired operation.

Bluetooth Pairing

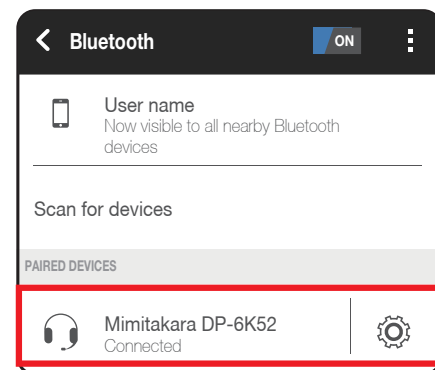
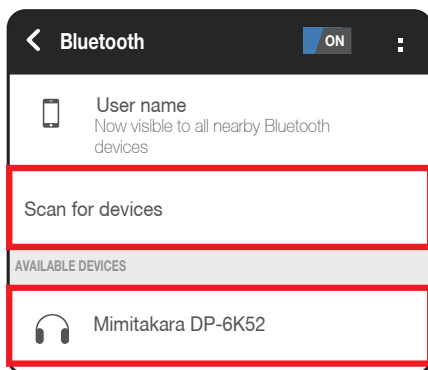
Press and holding the (M) for 1 seconds enables the Bluetooth pairing function.

The hearing aid can connect with other devices by Bluetooth such as cell phone, pad and other devices that have Bluetooth functions.

- Press and hold for 1 seconds to enter Bluetooth pairing mode. The indicator will flash both Red and Blue light indicating that it is ready for pairing.
- Open Bluetooth function for your cell phone (Host). Turn on the Bluetooth function on your cell phone from the “settings”.



- Once in the cell phone Bluetooth page and click the “Scan for devices” option. The hearing aid will be shown in the “Available devices” list. Press on it to start the pairing process.



- When pairing is successful, the indicator lights will be flashing slower as the connection is completed.
- ※ Note that different devices have different software that may require you to pair in a different method (Android & iOS software system).

Note:

1. When you want to use Bluetooth function, please open Bluetooth setting on your cell phone (host device) at the same time.
2. After the first time pairing both devices on Bluetooth, the hearing aid will connect with the same device automatically. The hearing aid can remember the last two devices it was connected too.
3. If the Smartphone (Bluetooth host device) has NFC functionality, then just one touch the device and it will automatically pair up. (Optional)