

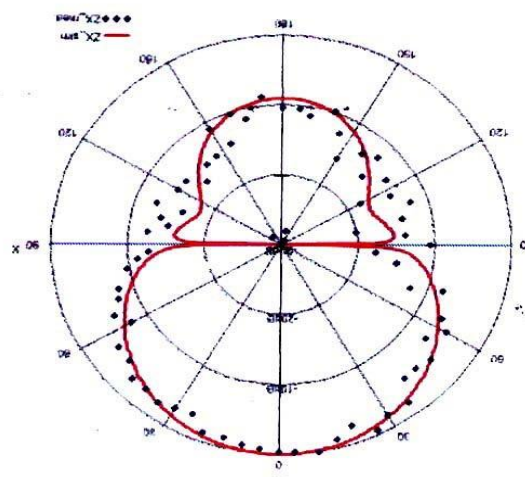
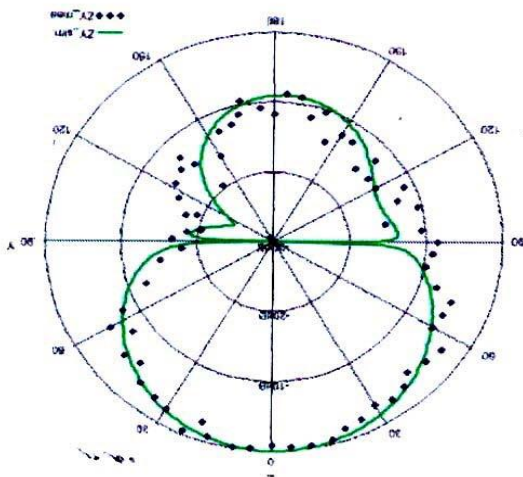
Antenna Description

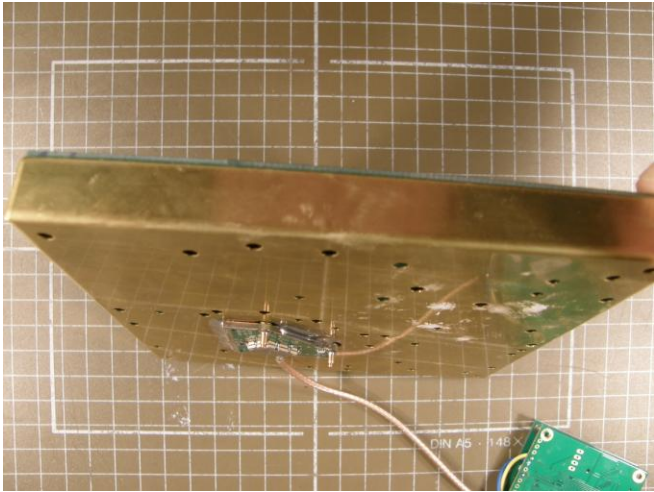
ST110 / PR110



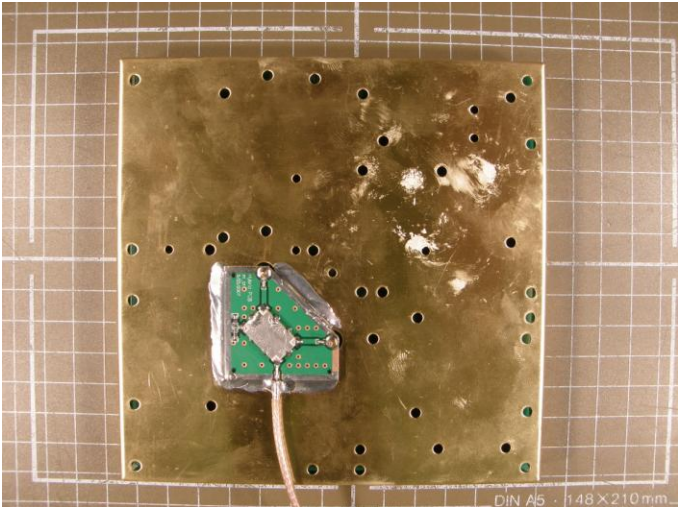
Antenna for UHF RFID reader ST 110; PR 110

- 1 **Antenna type:** circular patch antenna 5x5 inch outline dimension with two quadrature inputs.
- 2 **Electrical characteristics:** Impedance: 50 Ohm matched for a frequency range of 900 to 930 MHz; or alternatively for 850 to 880 MHz VSWR: less than 1:1,5 Gain: 5 dBi Directivity: at 7,5 dBi
- 3 **Radiation pattern:**
- 4 **Schematic:** see PDF file enclosed
- 5 **Mechanical construction:** see pictures below The main elements are a steel brass frame which is the carrier for the antenna and ground; a Styrofoam distance holder between the brass frame and the FR4 PCB antenna. The coupling device is directly soldered onto the brass frame and the antenna is connected with 2 steel PIN's through the brass frame and distance holder to the PCB antenna.

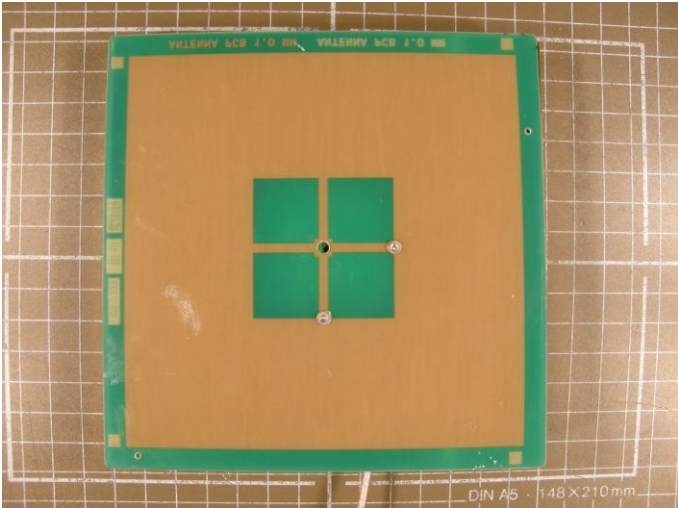




Antenna explosion view



Antenna back view



Top view,