

Nakajima USA, Inc.

# **Bluetooth Headset Manual**

Hello Kitty / Chococat



Nakajima USA, Inc.

# **Bluetooth Headset Manual**

Hello Kitty / Chococat



## Contents

Introduction	2
Bluetooth KT/C0 Headset Overview	3
Getting Started	5
•Charging the Headset	6
•Wearing the Headset	7
•Check the Headset buttons	9
•Switching the Headset On/Off	9
•Pairing the Headset	10
•Using the Headset	11
•Answering a Call	12
•Ending a Call	12
•Rejecting a Call	12
•Making a Call	13
•Volume Control	14
•Transferring a Call between Headset and Mobile Phone	14
•Mute/Un-mute	14
•MSN/Skype Function	15
•Low Battery	15
<b>Troubleshooting</b>	16
<b>Additional information</b>	18

## Introduction

The **Bluetooth KT/C0 Headset** is a Bluetooth device developed with Bluetooth technology, which can connect to other Bluetooth devices such as mobile phone , PDA, or notebook computer (with audio gate way profile supported) wirelessly to attain voice transferred purpose within a range of 10 meters.

### Introduction of Bluetooth wireless Technology

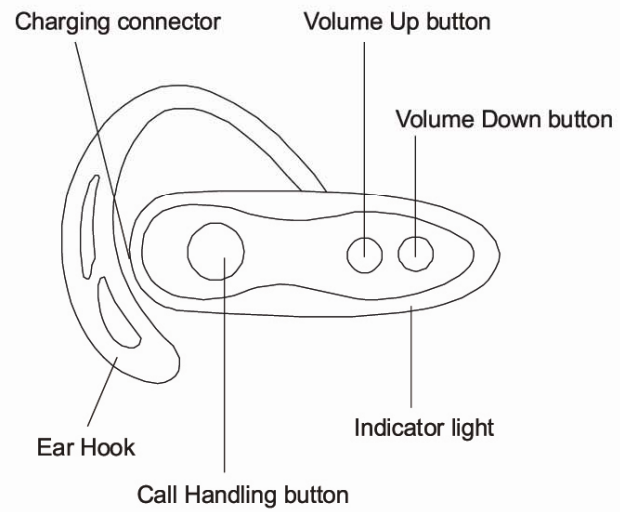
Bluetooth is a short-range wireless communication technology. The Bluetooth wireless technology makes it possible to connect any compatible portable and stationary communications device without using cables. The technology is based on a radio link that offers fast and reliable transmission of voice and data information. Bluetooth refers to a worldwide standard designed to operate in the internationally recognized ISM (Industrial Scientific and Medical) frequency band. Within the ISM band (2.4GHz~2.485GHz), Bluetooth transmissions hop between 79 separate frequencies 1,600 times every second, and with a communication range of about 10 meters.

### Box Content

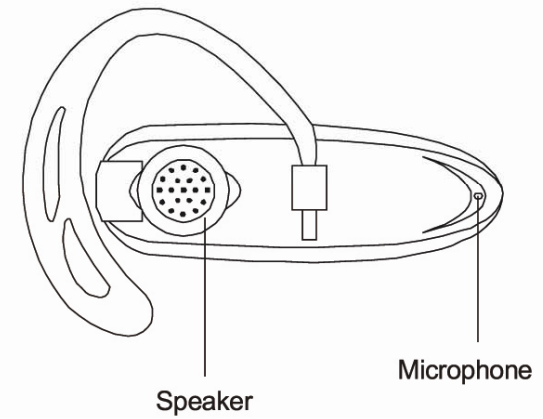
- Bluetooth KT/C0 Headset
- USB DATA LINE
- Ear Hook
- Ear Cushion
- User Manual
- Limited Warranty Card

## Bluetooth KT/C0 Headset Overview

### Front



### Back



## Getting Started

Before you start using the headset with mobile phone or other device for the first time, you should:

- Charge the headset battery.
- Pair the headset with a device.

The Bluetooth KT/C0 Headset has a built-in recharge.

For first time usage, it will take 2 hours to fully charge the battery. Afterwards, it will take about 1.5 hours to fully recharge the battery.

With the battery fully charged, talk time is estimated at 5 hours. Stand-by time is estimated at up to 100 hours.

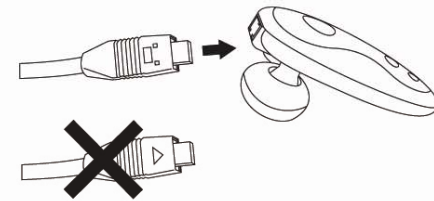
## Charging the Headset

1. Connect the USB A Type cable to the Computer and the other end to the Head set.

NOTE: the headset can also be charged by connecting to a computer USB port.

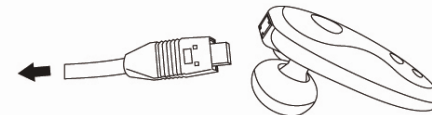
During charging, the indicator light shows a steady Red and a blinking red light. When the battery is fully charged, the indicator turns off.

**Note:** see figure



### To disconnect the charge line

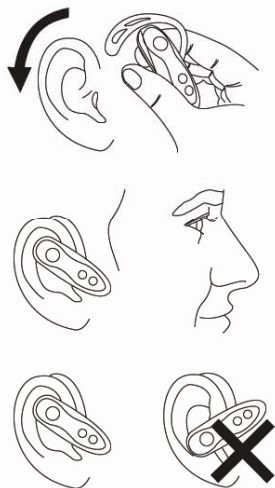
Pull the charge line plug to remove it.



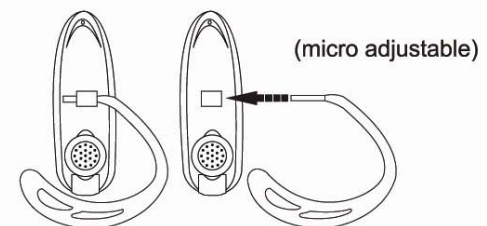
## Wearing the Headset

### Putting on the Headset

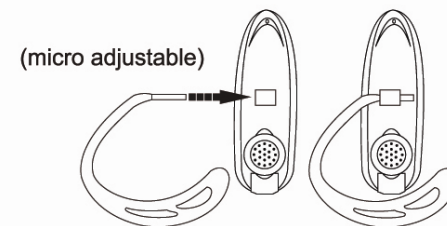
1. Put on the headset with the ear hook behind your ear.
2. Make sure the microphone is pointing towards your mouth.



### To adjust the ear hook for right-ear use



### To adjust the ear hook for left-ear use



### Check the Headset buttons

Call Handling Button: Power on / Power off / Answer calls / End calls / Pairing  
Volume up button: increase the speaker volume.  
Volume down button: decrease the Speaker volume.



### Switching the Headset On/Off

#### To switch the headset on

1. Press the Call Handling button for about 5 to 10 seconds until The LED indicator flashes blue.
2. The headset switches on and enters standby mode. The LED indicator continuously flashes blue every 3 seconds.

#### To switch the headset off

1. Press the Call Handling button for about 5-10 second until The LED indicator flashes red.
2. The headset switches off and the LED indicator no longer blinks.

### Pairing the Headset

Before using the headset, you must first pair it with a Bluetooth wireless technology enabled device, such as a Bluetooth mobile phone.

Pairing is necessary for two Bluetooth devices to connect each other wirelessly. After creating a paired link, you do not need to repeat the pairing process and the headset automatically links to the mobile phone when both devices are switched on. Pairing must be performed every time you want to use the headset with a different Bluetooth mobile phone or other Bluetooth wireless technology enabled devices. The headset can be paired simultaneously with up to 8 mobile phones.

To initiate pairing between the headset and a Bluetooth mobile phone in close proximity:

1. Please turn off the headset.
2. Make certain the mobile phone is switched on.
3. Press the Call Handling button to switch on the headset, and keep the Call Handling button pressed for 7 seconds until the LED indicator alternates between blue and red.  
The headset is now ready for pairing with the mobile phone.

4. Perform a device discovery from the mobile phone. (For details on device discovery, please refer to your phone's user's guide.)
5. Once the mobile phone discovers the headset, the text **KT/C0** appears on the phone's screen.
6. Follow the phone instructions to accept pairing. When prompted to enter the passkey, enter the number: 9999.
7. If time runs out after 60 seconds and the pairing fails, you will have to repeat the steps above. You can view the status from the phone's screen.
8. On completing pairing, the phone's screen will notify you that the pairing was successful. The LED indicator continuously flashes blue, and the headset goes into standby mode.
9. You can now make and answer calls through the headset.

### Using the Headset

Before using the headset, make sure that (1) the headset is switched on and connected to a paired Bluetooth mobile phone; (2) the headset is within 10 meters of the phone; and (3) the phone's Bluetooth feature is on (see your phone's user's guide).

**Note:** The headset supports both Headset and Hands-Free profiles. Some mobile phones don't support all functions listed below. Please consult your phone's user's guide.

### Answering a Call

When an incoming call comes, the headset rings and the LED indicator flashes blue at a 3-second interval, to receive the call from the headset, press the Call Handling button once. You can also answer the call by using your phone in the normal way. Please note that if the mobile phone rings first, wait until you hear a ring tone from the headset, and then press the Call Handling button to answer the call.

### Ending a Call

To end a call, press the Call Handling button once on the headset or press the phone's END key. The headset returns to standby mode.

### Rejecting a Call

When a call comes and you do not want to answer it, you can press the Call Handling button for 2 seconds to reject the call.

## Making a Call

You can make a call through:

### Voice activation

To use voice activation, the mobile phone must support voice dialing. For details on voice dialing, please see your phone's user's guide.

1. Press the Call Handling button once on your headset.
2. After a short tone sounds, speak the name of the person you wish to connect (if he or she has a voice tag in your phone).
3. The phone automatically dials the number; you can see the details of the call from the phone's screen.

### Dialing a phone number from your mobile phone

1. Dial the phone number from the mobile phone's keypad.
2. Press the key to send the call from your phone.
3. The call automatically transfers to the Headset.

## Volume Control

During a call, you can adjust the headset speaker volume. An audio tone is played for each volume up and volume down step.

To increase the volume, press the Volume Up button repeatedly until you reach the desired level. To decrease the volume, press the Volume Down button repeatedly until you reach the desired level.

**Note:** The headset uses increasing volume. For safety reasons, it starts with a low volume level before the maximum set level is reached.

## Transferring a Call between Headset and Mobile Phone

To transfer a call from the headset to mobile phone or from mobile phone to headset, initiate it from the mobile phone (Refer to your mobile phone's user guide)

## Mute/Un-mute

To mute the headset sound during a call, press the Volume Up and Volume Down button for 2 seconds, and you hear 1 tone repeated every 20 seconds. Upon activating the mute function, the person on the other side won't hear you, but you can hear all sound generated from the other side. To un-mute, press the Volume Up button or the Volume Down button once.

### MSN or Skype Function

If you plug in some brands of USB dongle on your PC, you can use Bluetooth KT/C0 as a wireless microphone on MSN or Skype.

※Above function may be effected by different mobile devices please refer to your mobile user manual for detail instruction.

### Low Battery

When the red indicator starts to flash, it indicates that the Bluetooth KT/C0 Headset is running low on battery. Please charge the headset battery for approximately 1.5 hours.

## Troubleshooting

This section lists some problems that you might encounter while using Bluetooth KT/C0 Headset.

### The indicator light flashes red

This indicates that the headset has only limited talk and standby time left. Charge the headset battery for approximately 1.5 hours.

### No indication of charging is shown

If you charge a headset battery that is empty, or has not been used for a long time, it may take up to few minutes, before a light to indicate charging (a steady blue light appears).

### No sound contact between Headset and other devices

1. Make sure that the two devices have been paired.
2. Make sure that the Headset is turned on.
3. Make sure that the two devices are within a working range.
4. Make sure that your mobile phone is within signal strength.
5. Some Bluetooth mobile phones can support one Bluetooth Headset only.  
Disconnection may happen when there is more than one Headset paired with your mobile phone.

#### Why there is noise coming from the Headset?

The performance of the Headset will be affected by two factors.

1. If the distance between your mobile phone and the Headset over the receiving range.
2. If your mobile phone is in weak signal area, you will not hear clearly with the headset.

#### Why my mobile phone can not find the Bluetooth KT/C0 Headset?

If the Headset is not in pairing mode, your mobile phone will not find the Headset. Please set the Headset into pairing mode before starting your mobile phone to search for the Bluetooth KT/C0 Headset. (Please refer to the User Manual for detailed instructions).

## Additional information

#### Guidelines for safe and efficient use

**Note:** Read this information before using the Bluetooth KT/C0 Headset.

Changes or modifications to this Bluetooth KT/C0 Headset not expressly approved by Digipower may void the user's warranty.

#### Product care

- Do not expose your product to liquid or moisture or to humidity.
- Do not expose your product to extreme high or low temperatures.
- Use of non-original accessories may result in loss of performance, damage to the product, fire, electric shock or injury. The warranty does not cover product failures which have been caused by use of non-original accessories.
- Do not expose the product to lit candles, cigarettes or cigars etc.
- Do not drop, throw or try to bend the product as rough treatment could damage it.
- Do not keep the product in an area prone to dust and dirt. Only use a soft cloth to clean your product.
- If you will not be using the product for a long while, store it in a place that is dry, free from damp, dust and extreme temperatures.

## Radio frequency exposure

Your Bluetooth headset is a radio transmitter and receiver. When in operation, it communicates with a Bluetooth equipped mobile device by receiving and transmitting radio frequency (RF) electromagnetic fields in the frequency range 2400 to 2500 MHz. The output power of the radio transmitter is low, 1mW.

### Driving

Check the laws and regulations on the use of mobile phones and hands free equipment in the areas where you drive.

### Aircraft

Turn your Bluetooth headset off before boarding any aircraft.

### Travel Charger

- The charger is designed for indoor use only. Do not use it for outdoors.
- The charger must be connected to the designated power sources as marked.
- When removing the travel charger from an outlet, never pull the charger cord only, as it may damage the charger.

### Children Caution

**Do not allow children to play with your Headset, as the small parts may cause choking hazard.**

## Battery Information

### New battery

For first time use, plug the adapter into the Headset and charge it at least 2 hours until the red indicator turns on.

### Battery care:

- Only qualified Service Centers are authorized to remove or replace the battery.
- The rechargeable battery has a long service life if treated properly.
- The battery can only be charged in a temperature range -10 C to 45 C.
- Use the battery in room temperature for maximum battery capacity.
- The battery capacity may be reduced if operating in cold environment.
- The Headset has to be recharged every two months, when it has not been used for a long period.

## **FCC Warning Statement:**

This device complies with part 15 of the FCC Rules. Operation is subject to the following two conditions:

- (1) This device may not cause harmful interference, and (2) this device must accept any interference received, including interference that may cause undesired operation.

Changes or modifications to this unit not expressly approved by the party responsible for compliance will void the user's authority to operate the equipment. Any change to the equipment will void FCC grant. This equipment has been tested and found to comply with the limits for a Class B digital device, pursuant to part 15 of the FCC Rules. These limits are designed to provide reasonable protection against harmful interference in a residential installation. This equipment generates, uses and can radiate radio frequency energy and, if not installed used in accordance with the instructions, may cause harmful interference to radio communications. However, there is no guarantee that interference will not occur in a particular installation. If this equipment does cause harmful interference to radio or television reception, which can be determined by turning the equipment off and on, the user is encouraged to try to correct the interference by one or more of the following measures:

- Reorient or relocate the receiving antenna.
- Increase the separation between the equipment and receiver.
- Connect the equipment into an outlet on a circuit different from that to which the receiver is connected.
- Consult the dealer or an experienced radio/TV technician for help.

The equipment compliance with FCC radiation exposure limit set forth for uncontrolled Environment