

Photo 1: Internal top view of W1 displaying battery and LCD back side



Photo 2: Internal right view of W1 displaying battery and LCD back side, another view



Photo 3: Internal left view of W1 displaying battery and LCD back side, another view

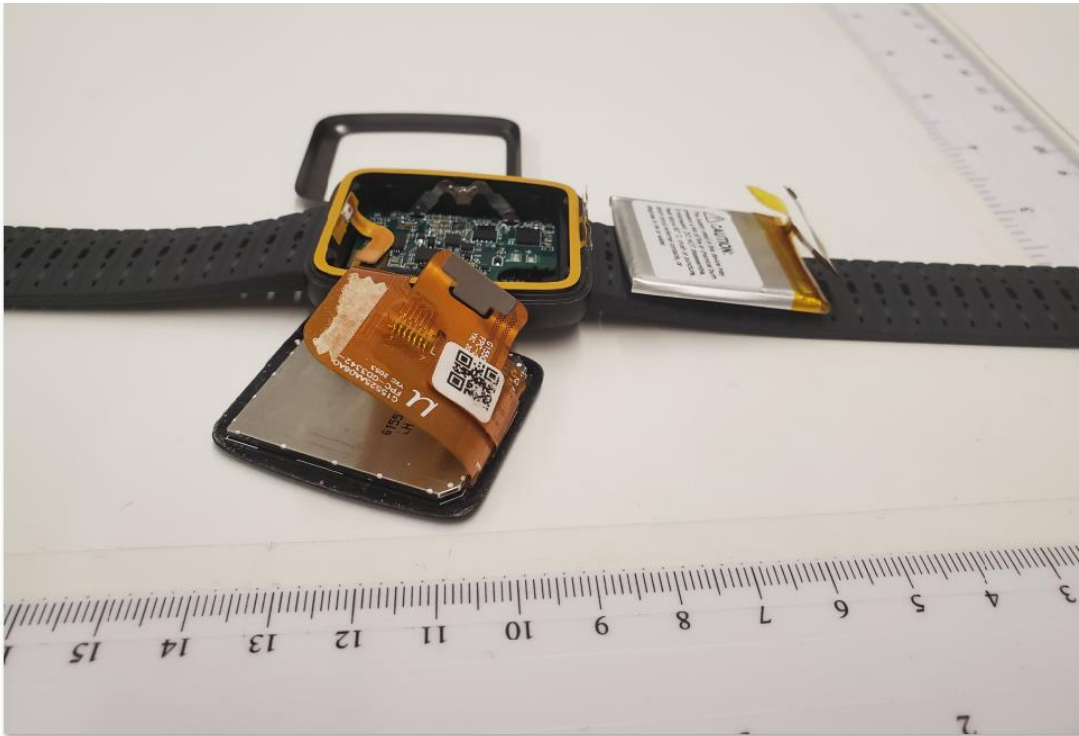


Photo 4: Close up view on internal PCB:



Photo 5: Close up view on internal PCB, additional view



Photo 6: Close up view on bottom PCB



Photo 7: Close up view on bottom PCB, showing the stack up

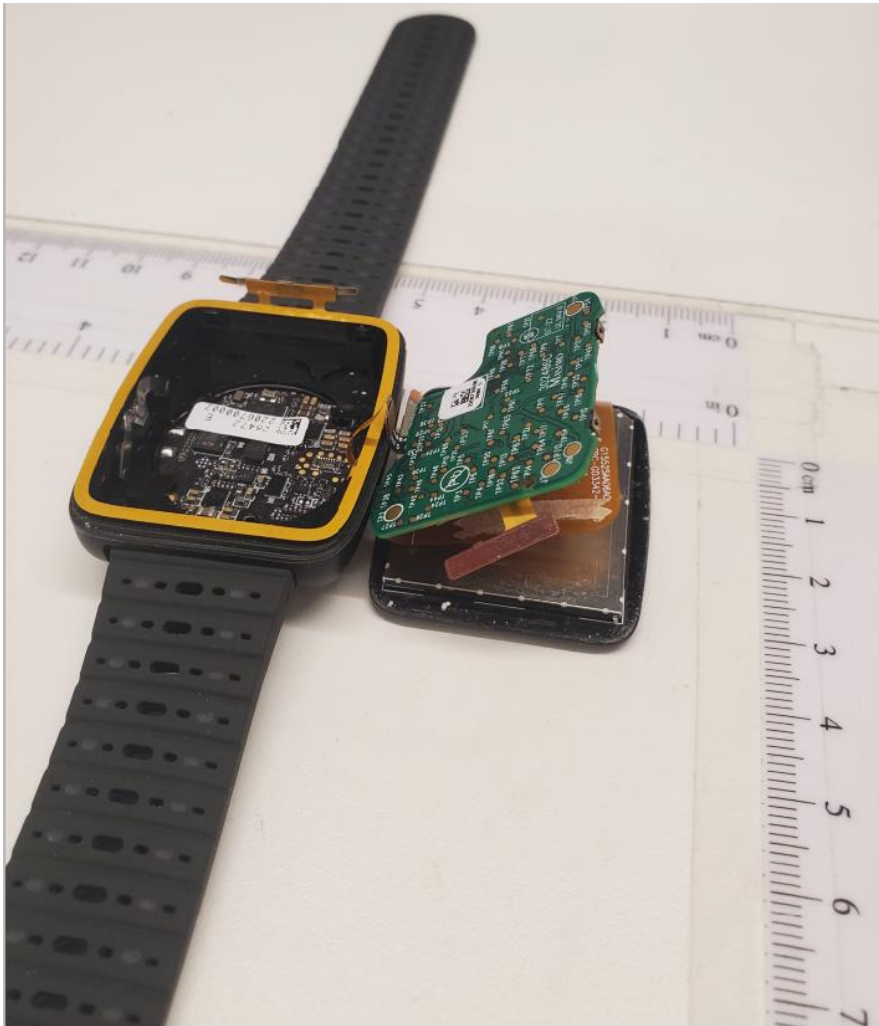




Photo 8: Close up view on bottom PCB, different view



Photo 9: Bottom PCB



Photo 10: Battery

