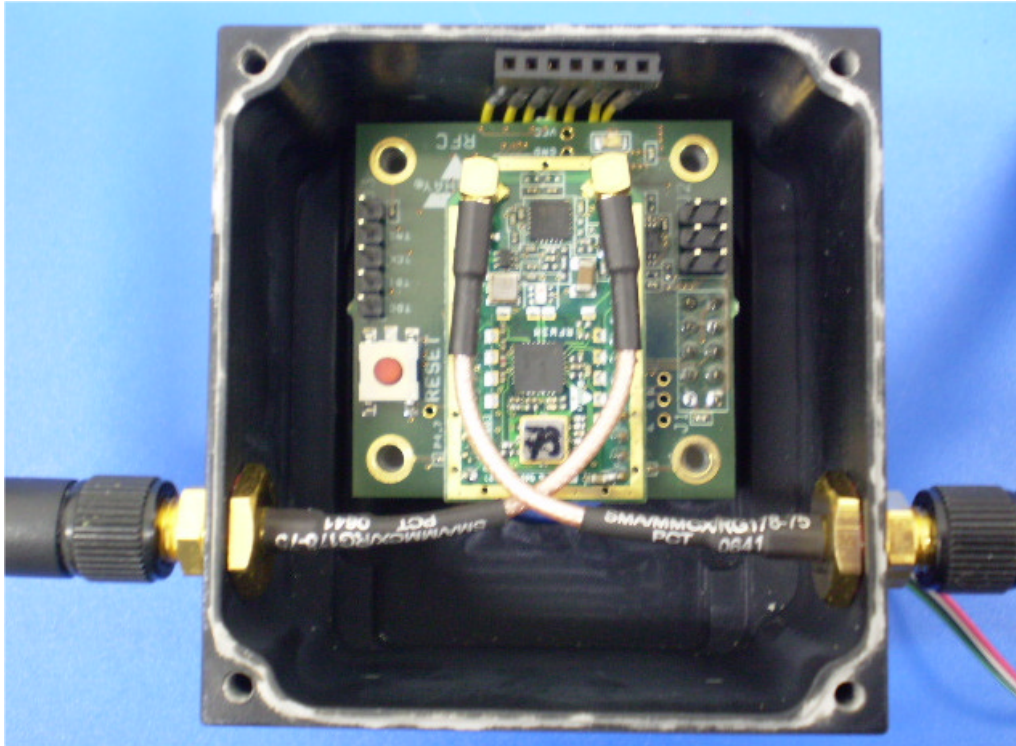


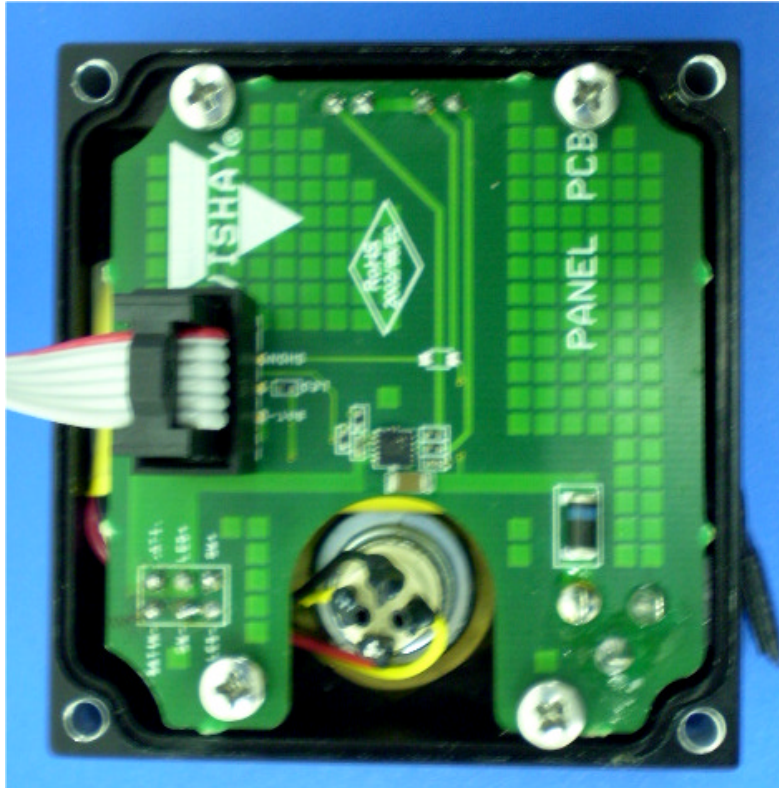
INTERNAL PHOTOGRAPHS

This document contains 12 photographs

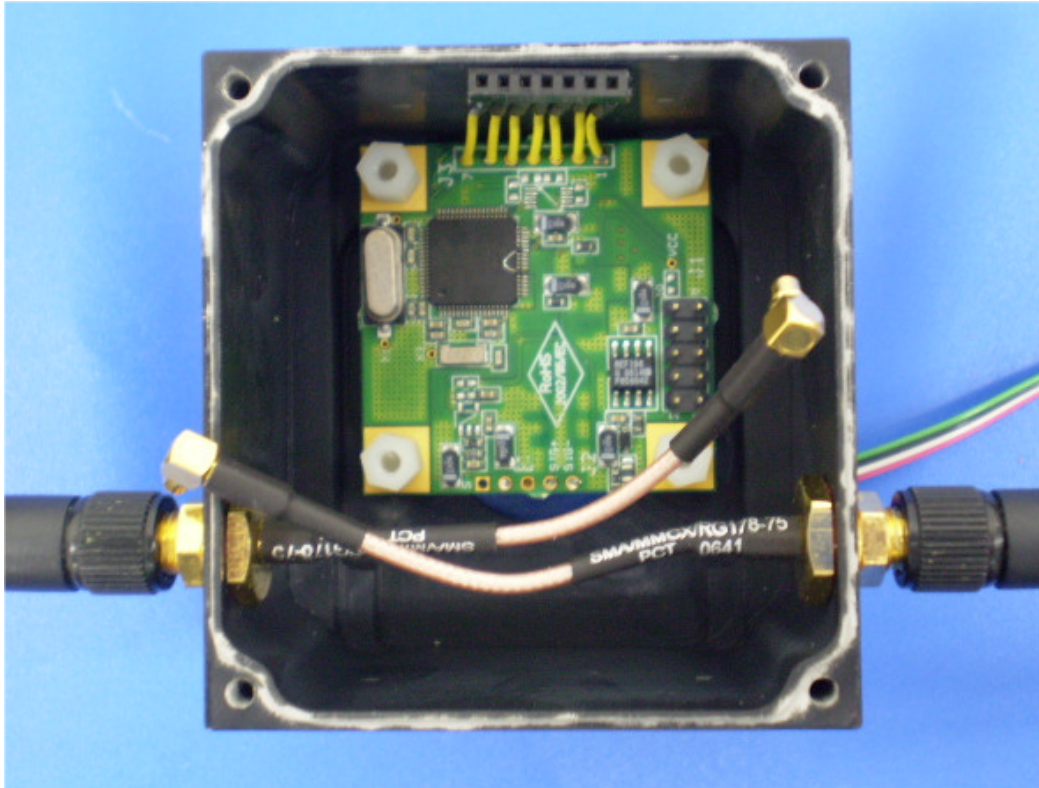
Photograph No.1
Wireless load cell internal view (the base band board side)



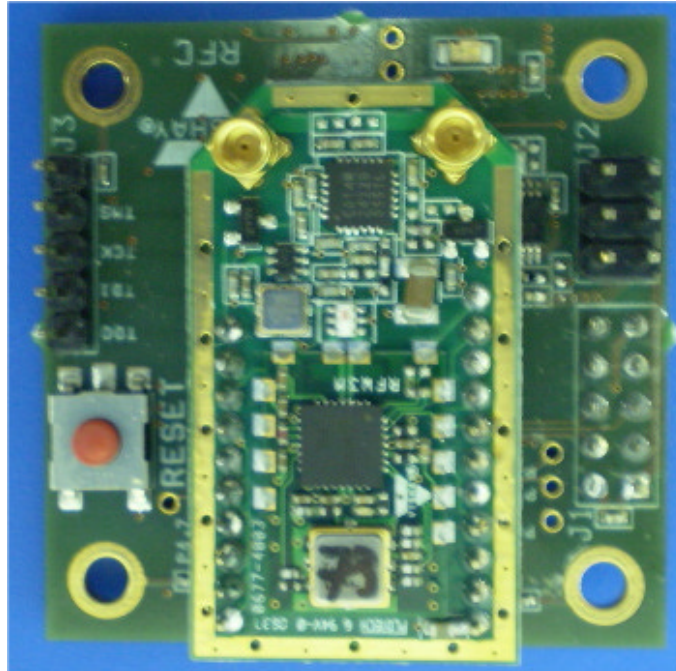
Photograph No.2
Wireless load cell internal view (the panel side)



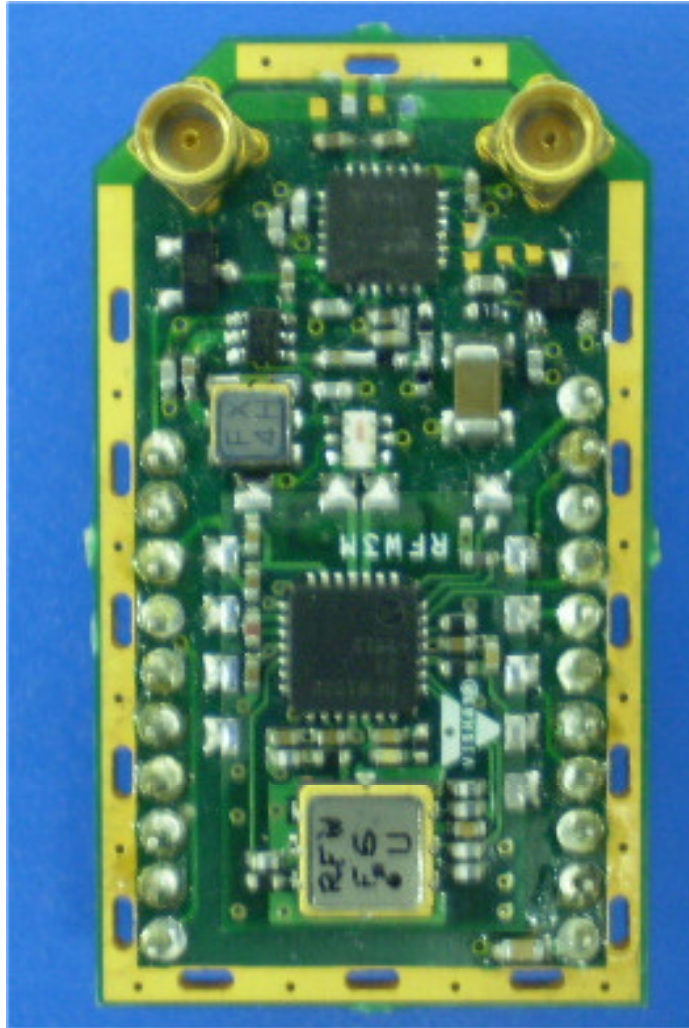
Photograph No.3
Wireless load cell internal view with the base band board removed



Photograph No.4
Base band board with RF board



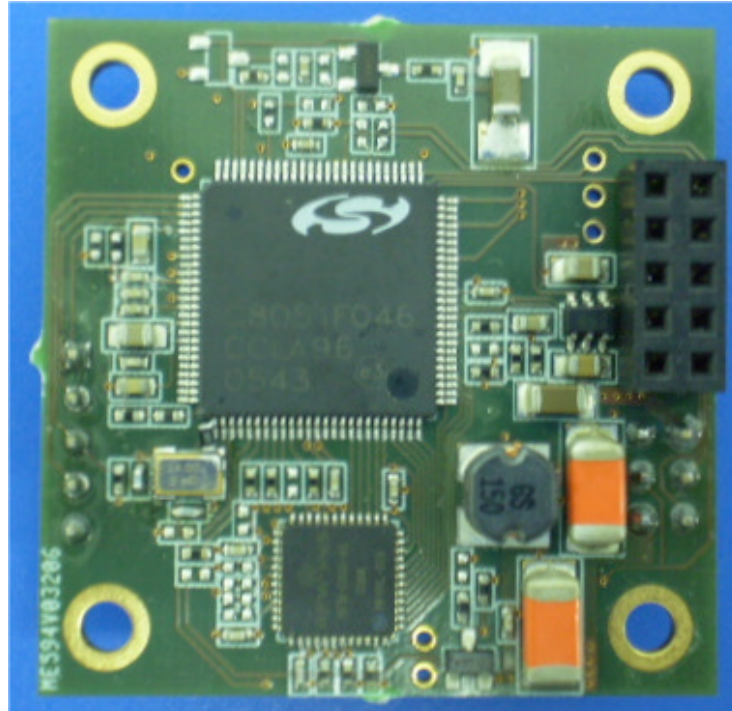
Photograph No.5
Component side of the RF PCB



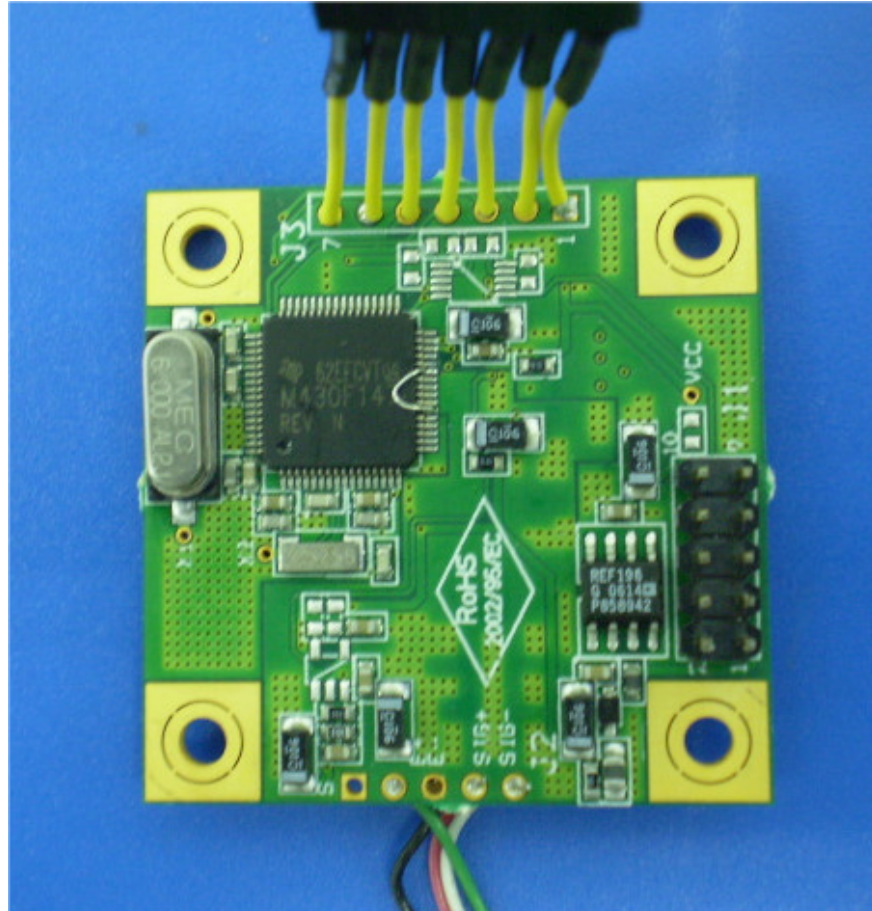
Photograph No.6
Print side of the RF PCB



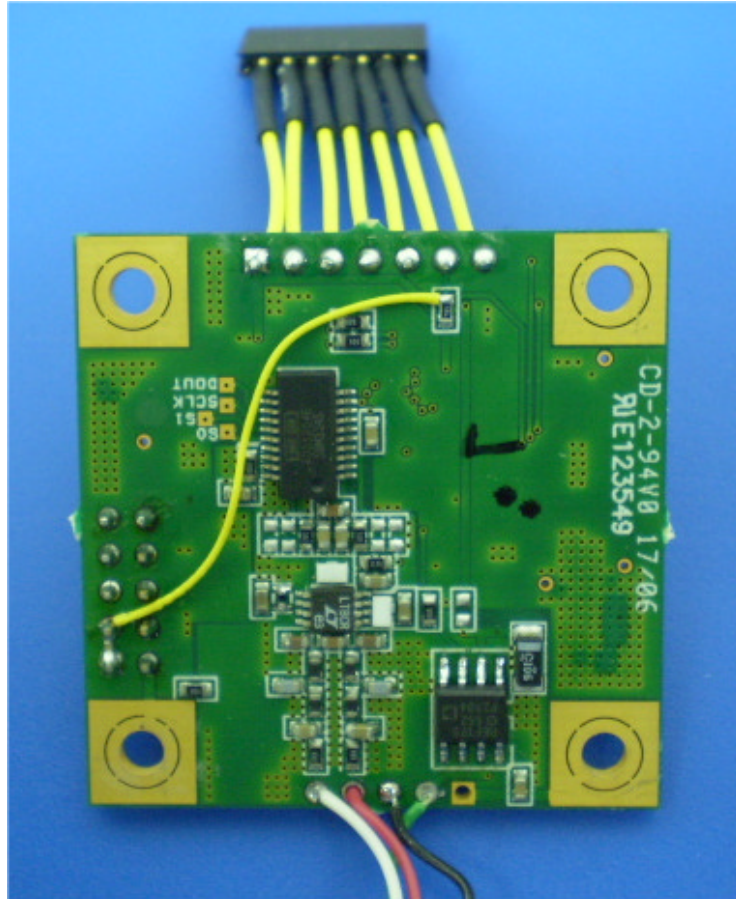
Photograph No.7
Base band board second side



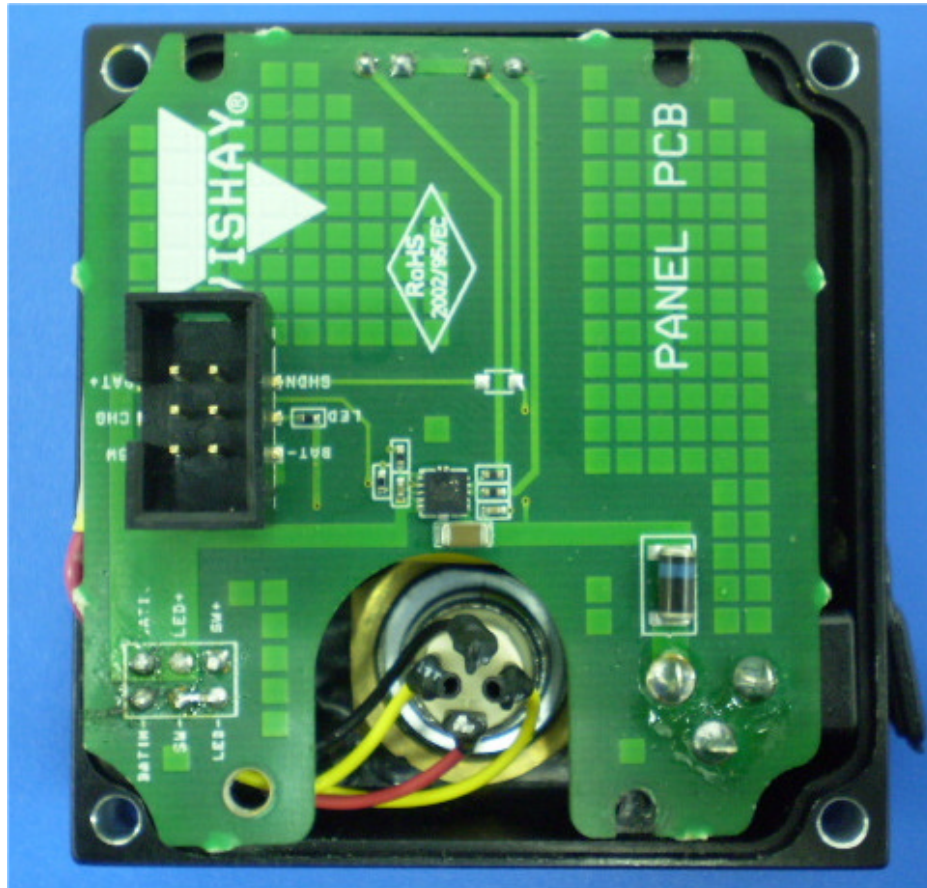
Photograph No.8
Weighing PCB front view



Photograph No.9
Weighing PCB second side



Photograph No.10
Panel front view



Photograph No.11
Internal view with panel removed



Photograph No.12
Second side of the panel

