



MANUAL DE USUARIO / USER'S MANUAL

Teléfono Celular Fijo para Aplicaciones Inalámbricas Fixed Cellular Phone for Wireless Applications

Ideal para Servicios de Telefonía Celular Semi Pública y otras Aplicaciones Inalámbricas
Ideal for Semipublic Cellular Services and other Wireless Applications



Welcome

Congratulations on your purchase of a Pulsare product!

Product registration is an important step toward enjoying your new product. Registering helps us facilitate warranty service, and permit us to contact you should your product require an update or other service. Registration is not required for warranty coverage.

Please retain your original dated sales receipt for your records. For warranty service of your Pulsare Personal Communications Product you will need to provide a copy of your dated sales receipt to confirm warranty status.

Please read Important safety instructions on page 69 before use.

Read and understand all instructions before use.

Please retain this guide for future reference.

This page is intentionally left blank

Table of contents

Welcome.....	i
Table of contents	i
Features.....	1
Getting started	3
Installation.....	3
Location of controls.....	5
Display	6
Connectors	8
Initial setup.....	9
Navigating the menu system.....	9
Basic operations.....	11
Placing a call.....	11
Mute	11
When the phone rings	11
In-call display	12
Status indicator light	12
Volume control.....	12
Send key.....	13
Setting ringer tone	错误!
未定义书签。	
Calling voicemail.....	13
Redialing the last dialed number(s)	13
Internet Service Program Installation.....	13
Advanced features.....	25
One-touch dialing.....	25
Dialing from the phone book.....	25
Phone book search.....	25
International dialing	25
Speakerphone button.....	26
Alarm clock button	26
Text messaging button	26
Text entry	27
Display the phone's number.....	28
System dependant features.....	28

Phone book	29
Create a new phone book entry	29
Dial a number from the phone book	30
Delete phone book entries.....	30
Edit phone book entries.....	30
Assign ring tone to a number	31
Remove ring tone from a number	32
Assign one-touch dialing keys	32
Check phone memory capacity	32
Display the phone's number.....	33
Call logs.....	34
View or dial a number from a call log	34
Delete an individual entry	34
Copy to phone book.....	35
Delete call logs.....	35
Messaging.....	36
Create and send new messages	36
Inbox.....	37
Sent messages.....	38
Clock	41
Time Settings	41
Alarm Clock	41
Security.....	43
PIN Lock.....	43
Lock the phone.....	45
Change User Password.....	45
Clear User Password.....	46
Settings.....	47
Display settings.....	47
Ring and Alarm.....	49
Call Control.....	50
Network Settings.....	51
Phone Settings	52
Printer Type	53
GPRS	54
Wireless Modem.....	54
GPRS Connect	54
GPRS Settings.....	54

Call Meter.....	57
Ctrl Box Off.....	57
Ctrl Box Post-paid.....	57
Ctrl Box Pre-paid	57
Charge Settings	58
Quick reference guide	62
Menu conventions.....	62
Menu	62
Glossary of Terms.....	67
Specifications	68
Important safety instructions	69
Warranty	76

Features

- Full duplex speakerphone
- Intuitive user interface
 - Four way menu navigation key
 - Three soft menu selection keys
- Easy to read back-lit graphical LCD display with:
 - Easy read clock (analog or digital) and date
 - Voice and text message waiting indicator *
 - Voice message waiting icon *
 - Text message waiting icon *
 - Call forwarding enabled icon *
 - Signal strength indicator
 - Alarm set indication
 - Network operator
 - Call timer
- Multi-state indicator light
 - Missed voicemail message waiting *
 - Missed text message waiting *
 - Missed call
 - Phone ringing
 - Alarm
- Dedicated text messaging button
- Dedicated alarm clock button
- External antenna for low signal areas
- Battery backup in case of temporary AC supply failure
- Keypad lock to prevent unauthorized use
- Handset and ringer volume adjustable
- Microphone mute
- One-touch dialing to voicemail *
- 8 user programmable one-touch dial keys
- Up to 744 numbers stored in phone book

Features

- Speed dialing from phone memory
- Call log with number, time, date, and duration for:
 - Last 300 dialed calls
 - Last 300 received calls
 - Last 300 missed calls
- Automatic number redial
- 42 ring tones
- Ability to assign ring tones to numbers
- Call timer and optional 1 minute warning tone
- Voicemail *
- Caller ID *
- Call forwarding *
- Call waiting *
- Call barring *

* Wireless carrier dependent

Getting started

The following items are included in the box.

- ☐ Telephone base unit
- ☐ Antenna
- ☐ AC adapter
- ☐ Rechargeable battery pack (optional)
- ☐ Handset
- ☐ Coiled handset cord
- ☐ USB Cable
- ☐ USB Drive Disk
- ☐ User Manual

Installation

Before using your new phone, follow these steps:

1. Connect the coiled cord to the handset and to the telephone base unit. Place the handset in the cradle on the base unit.
2. Attach the antenna to the mating connector on the base if it is not already attached.
3. Turn the phone upside down and insert the SIM card to the card socket.
4. Remove the battery cover. If the phone was supplied with a rechargeable battery pack.
 - a. Insert the battery pack (2) in the cover door (1).
 - b. Connect the battery pack connector (4) to the mating connector (3).



- c. The battery will need to charge for 6 hours before it will yield full capacity.
5. Plug the AC adapter into a nearby socket and connect the telephone to the AC adapter.
6. With the telephone upright, place the antenna in a vertical position. Check that there is power to the telephone. If not, check all connections above. If there is power to the telephone, the phone is now ready for use.

CAUTION

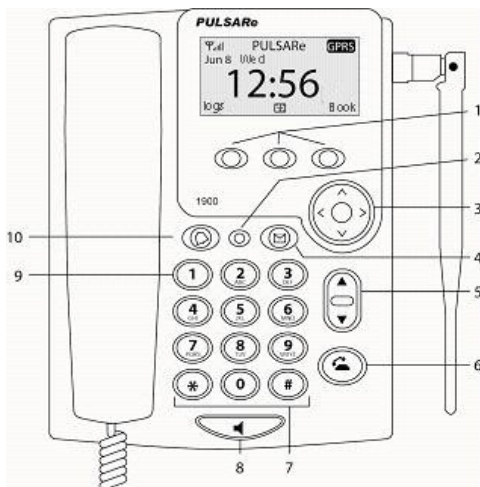
NEVER attempt to remove the antenna while the phone is in use or switched on. Always disconnect the AC supply and remove the batteries before disconnecting the antenna. Failure to take this precaution may result in damage to the phone and void the warranty.

WARNING

The batteries are for emergency backup only. Connect the AC supply and confirm that the telephone is working normally before installing the batteries. This phone is not intended for use without the AC adapter.

ATTENTION

If the phone is using alkaline batteries, replace the batteries every six months to ensure proper service in the event of power failure.



- 5

6. **Send key**

Used to dial or redial a number previously entered. See Send key on page 13 for more information.

7. **Keypad numeric keys**

Numeric keys 1 through 0, and # and *. Used to enter telephone numbers, program the phone, etc.

8. **Speakerphone**

Used to activate the speakerphone. See Speakerphone button on page 26 for more information.

9. **One touch voicemail key**

Numeric key 1 on the keypad is a one-touch dial to voicemail. See Calling voicemail on page 13 for more information.

10. **Alarm clock button**

Allows direct access to the alarm clock menu.

See Alarm clock button on page 26 and Clock on page 41 for more information.

Display



1. **GPRS indicator**

Indicates GPRS availability. See more in GPRS on page 55.

2. **Alarm set time**

In standby mode, the display shows that the alarm is set and the time it is set for. If the alarm is not set this area is blank. See Clock on page 42. In all other modes this area is used to display other information.

3. **Text message waiting icon**

In standby mode, the display shows an icon if there is a new text message(s) waiting. If there is no message(s) waiting the area is blank. See Messaging on page 37 for more information. In all other modes this area is used to display other information.

4. **Call forwarding icon**

This indicates that call forwarding is enabled. See Call forwarding on page 51 for more information. In all other modes this area is used to display other information.

5. **Voicemail waiting icon**

In standby mode, the display shows an icon if there is a new voicemail message(s) waiting. If there is no message(s) waiting the area is blank. See Calling voicemail on page 13 for more information. In all other modes this area is used to display other information.

6. **Soft-key action indicator**

The soft-keys provide access to the menus and sub-menus. The actions of the soft-keys will change and will be shown at the bottom of the display.

7. **Time**

In standby mode, the display shows the current time, digital or analog. See Setting date and time on page 9. In all other modes this area is used to display other information.

8. **Phone keypad lock icon**

This indicates that the phone is locked. When the phone keypad is locked no features are allowed except emergency calling and answering a call. See Lock phone keypad on page 10 for more information.

9. **Date**

In standby mode, the display shows the current date. See Setting date and time on page 9. In all other modes this area is used to display other information.

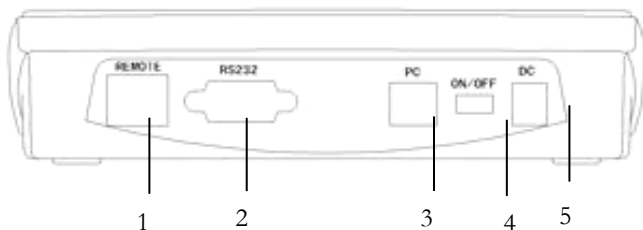
10. **Antenna icon / signal strength indicator**

The antenna icon represents signal available and the one to five bars indicate signal strength.

11. Service provider indicator

The service provider indicator displays the current service provider. If there is no signal this will be blank.

Connectors



1. Remote

The port to connect controller and the phone.

2. RS232

The interface to connect printer

3. PC

The port to connect PC and the phone.

4. ON/OFF

The button to turn the phone on or off.

5. DC

The port for DC. Connected with AC adaptor.

CAUTION

Do not operate your telephone when a person is within 8 inches (20 centimeters) of the antenna. A person or object within 8 inches (20 centimeters) of the antenna could impair call quality and may cause the phone to operate at a higher power level than necessary and expose that person to RF energy in excess of that established by the FCC RF Exposure Guidelines.

Initial setup

If the phone requests a PIN code

The PIN code is a four to eight-digit code. See PIN code on page 44 for more information.

If the phone requests an unlock code

The lock code is used to prevent unauthorized use of the phone. The lock code is a four-digit code. See PIN code on page 44 for more information.

Setting date and time

The date and time will normally be updated automatically*. In the event that this does not happen the date and time will need to be set manually.

1. Press the middle soft-key to enter the menu screen.
2. Using the 4-way navigation keys highlight the **Menu: Clock** icon and press **Select**.
3. Using the 4-way navigation key highlight **Time Settings** and press **Select**.
4. Using the 4-way navigation keys set the current date and time: year, month, date, hour, minute and second, and press **Confirm**.

* See System dependant features on page 28.

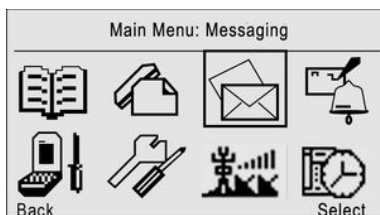
Navigating the menu system

To enter the menu system

From the idle screen (display shows an analog or digital clock), either press the middle soft-key or any of the four navigation keys.

To exit the menu system

From the menu screen (display shows the eight sub-menu icons: **Phone Book, Call Logs, Messaging, Alarm Clock, Security, Settings, GPRS, and Call Meter**), press the left soft-key **Back** (unlabeled).



Menu system conventions

While navigating the phone menus, unless otherwise indicated, the left soft-key is **Back** and the right soft-key is **Select (OK)**.

Using the 4-way navigation key

Use the 4-way navigation key to scroll up, scroll down, scroll left, or scroll right through the menu system, and to highlight menu items.

Key pad locking setup

Locking the keypad is to prevent unauthorized use. However, this is optional.

1. Press middle-soft key to enter the main menu.
2. Press [*] key
3. Input a password
4. Press **Confirm**

You will be reminded to unlock the keypad.

Basic operations

Placing a call

1. To place a call lift the handset or press speakerphone, key in the number and press **Send key**, or wait 5 seconds for the number to be automatically dialed.
2. The phone will display the message **Connecting** and the dialed number.
3. When the call is answered the phone will display the number and a call timer.

See International dialing on page 25, Phone book on page 29 and Call logs on page 34 for more dialing options.

Mute

If there is a call,

1. To mute the microphone press **Mute**.
2. To revert to normal operation press **Unmute**.

When the phone rings

When the phone rings (see Set ring tone on page 50) the display will show the number or name (if entered in the phone book) of the person calling and the indicator light will flash red. Here are the options:

1. Answer the call by raising the handset.
2. Answer the call by pressing speakerphone.
3. Silence the ringer by pressing **Silence**.
4. Divert caller to voicemail * by pressing **Reject**. See Calling voicemail on page 13 for more information.
5. Do not answer. The phone will either go to voicemail * or to a preprogrammed forward number if call forwarding * is enabled. See Setup call forwarding on page 51 for more information.

* See System dependant features on page 28.

In-call display

When on a call the display will show the number* or name of the person (if entered in the phone book) and a call timer.

When the phone is ringing the display will show the number* or name of the person (if entered in the phone book) and a call timer. See Phone book on page 29 for more information.

Status indicator light

The visual status indicator light provides additional emphasis to the existing audible (ringer) and visual indicators (display).

Here is a list of the states and their meaning:

Status indicator light	Phone state
Off	Normal (power on)
Flashing red	New unread message waiting (voice or text) *
Flashing red	Alarm clock
Fast flashing red	Ringing

* See System dependant features on page 28.

Volume control

The volume adjustment keys will change the volume level of the phone ringer or handset speaker depending upon the current state.

1. When the phone is in standby mode or ringing, the volume controls will increase or decrease the ringing volume.
2. When the phone is being used as a speakerphone, the volume controls will set the volume level of the speaker.
3. When the handset is off-hook (not in the cradle) the volume controls will change the handset speaker volume.

Send key

The send key will dial the number currently displayed on the screen, whether from the phone book or just keyed in.

Calling voicemail

Voicemail * is an answering machine where messages can be left if the phone is in use or there is no answer.

1. To access voicemail press and hold the numeric key number 1 for 1.5 seconds or more.
2. The phone will dial the voicemail number.

* See System dependant features on page 28. See more in Set voice No. on page 56.

Redialing the last dialed number(s)

1. Press the green **Send key** to view the last 300 numbers dialed.
2. Using the 4-way navigation key highlight the number to dialed, select **Dial**, and lift the handset.
3. The phone will display a message **Connecting** and the number.

See Call logs on page 34 for more information.

Internet Service Program Installation

Hardware Connection

Before you start installation, please check the minimum configuration required of your PC.

- **Hardware:** CPU Pentium 300MHz, 64MB RAM, 2GB hard disk, 1 USB port.
- **Software:** Windows 98, Windows ME, Windows 2000, Windows NT or Windows XP.



Phone and PC Connection by USB Cable

Caution:

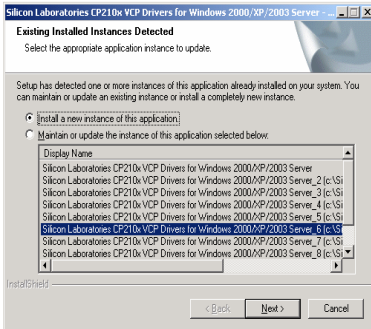
To avoid damage to the phone while making connections, make sure to turn off the Phone before making connection. **Only manufacturer supplied serial cable should be used.**

USB Driver Installation

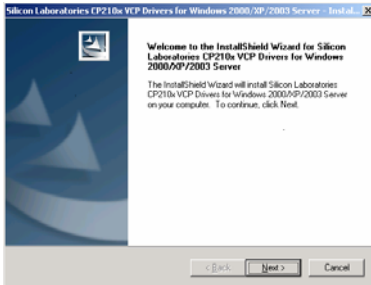
- 1) Please install the USB driver CP210X Driver Installer firstly, click the file of CP210X Driver Installer in CP210X Driver Installer file. Install it according to the guide procedure (as the picture below); Insert the disk (of the packing box) and the following icon will pop out;



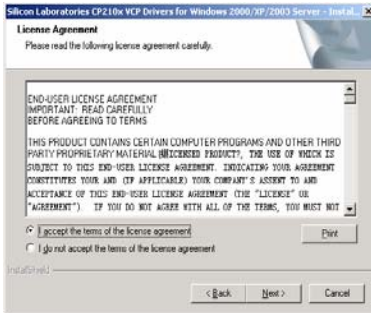
Click the above icon CP210X Driver Installer, and see the picture as below:



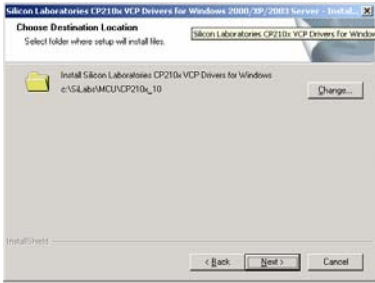
Click NEXT<N> of the above picture, please see the picture as below:



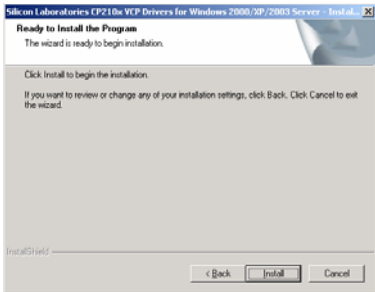
Click NEXT<N> of the above picture, please see the picture as below



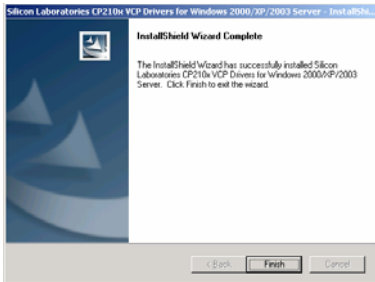
Click NEXT<N> of the above picture, please see the picture as below



Click NEXT<N> of the above picture, please see the picture as below



Click NEXT<N> of the above picture, please see the picture as below



Click “Finish” of the above picture.

- 2) Turn on the telephone and enable the internet function. Then connect the phone and computer with the USB cable. The computer will tell you it found new hardware wizard.



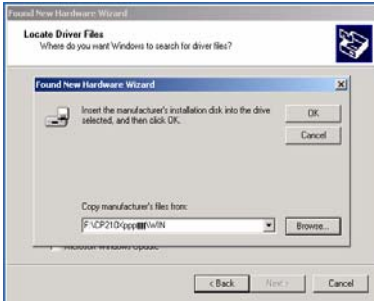
Click NEXT<N> of the above picture, please see the picture as below,



Click NEXT<N> of the above picture, please see the picture as below,



Click NEXT<N> of the above picture, please see the picture as below,



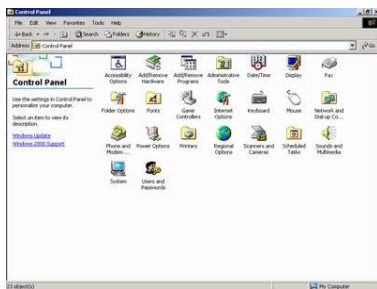
Please select: Location (L). And select the browse path in WIN file of CP21X driver procedure. Click NEX<N> for finishing the installation.



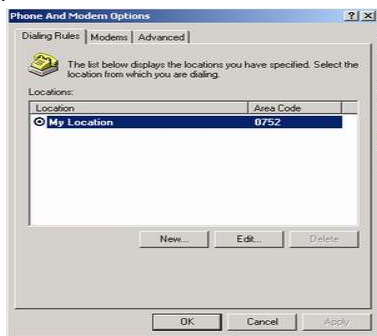
After the installation finished, it will appear “Found new hardware wizard” again. Please repeat the above operation one more time to install the new hardware. After it is finished, the driver installation will be fully completed.

Computer configuration

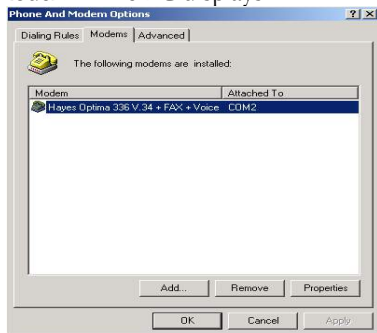
- 1) Double click “My Computer” on the Desktop of your PC. Then double click “Control Panel”. The PC displays:



Double click “Phone and Modem Options”. The PC displays:



Click “Modem”. The PC displays:



Click “Add”. The PC displays:



Tick “Don’t detect my modem; I will select from a list.”
Click “Next”. The PC display:



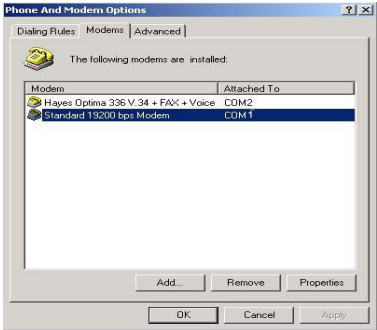
Select “Standard Modem Types” in “Manufacturer”, and
Select “Standard 19200 bps Modem” in “Models”. Then
click “Next”. The PC displays:



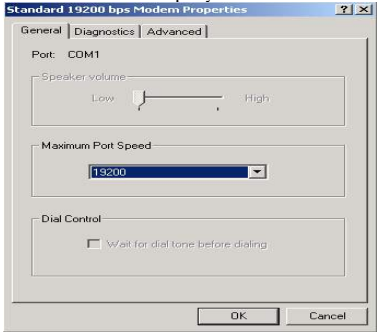
Select the found serial port (For example COM1) and click
“Next”. The PC displays:



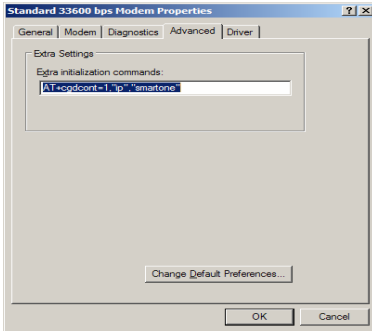
Click “Finish” to complete the installation. Then, configure the Modem.
After installation, “Phone and Modem Options” displays as:



Select the Modem installed just now, and clicks “Properties”. The PC displays:



Select “Maximum Port Speed” as “19200”.
Select “Advanced” leaf to configure extra settings.



Enter the predefined PDP context (Extra settings). Please ask from your local Telecom Operator for the PDP context. (AT+CGDCONT=1,"IP","CMNET")
Select Modem and click OK

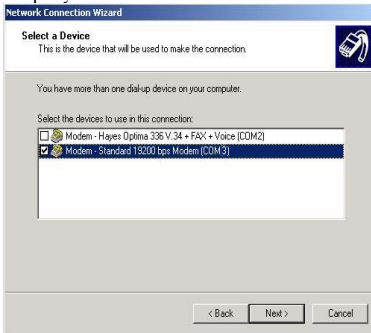
- 2) Double click “Control Panel”, click “Network and Dial-up Connections”, and then “Make New Connection”. The PC displays:



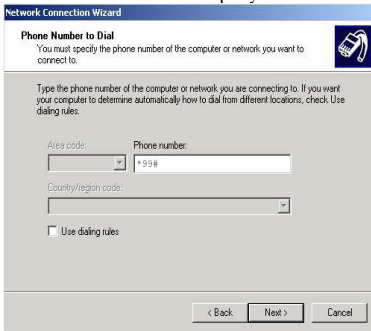
Click “next”. The PC displays:



Select “Dial-up to private network” and click “Network”. The PC displays:



Select “Modem – Standard 19200 bps Modem (com1)”, and click “Next”. The PC displays:



Enter “Phone number”, and click “Next”. The PC displays as the following. Please ask from the Operator Company for the connecting phone number (For example: *99#).



Select the preferred “Connection Availability”, and click “Next”. The PC displays:



Enter the name you want to use for the connection, and click “Finish” to finish the creation of new connection. Click “Finish”, The PC displays: (Example)



The user must enter the user name and password. For these two items, please ask from the local Operator Company. After entering, click “Dial”. The PC displays: (Example)



After connection, you may enjoy the Internet.

- To exit from the Web, shut off Internet function first. Then remove the USB cable.
- While surf the Internet, you can't use the phone to call at the same time.

Advanced features

One-touch dialing

There are 8 One Touch Dialing locations. Using One-Touch Dialing it is possible to dial a number just by pressing and holding a single numeric key.

1. Press and hold one numeric key (2 through 9) for 1.5 seconds in the stand-by state of the phone.
2. The display will confirm that the number/name is being dialed.

See Assign one-touch dialing keys on page 32 for more information.

Dialing from the phone book

Up to 744 numbers may be stored in the phone memory (phone book). It is possible to dial these numbers directly from the phone book. See Dial a number from the phone book on page 30 for more information.

Phone book search

The list of phone book entries will be displayed in alphabetical order. To narrow the search, enter the first letter of the name using the number keys. See Dial a number from the phone book on page 30 for more information. For more information on text entry see Text entry on page 27.

International dialing

1. To place a call, lift the handset.
2. Enter the + character by pressing 0 key twice in 1.5 seconds.

3. Enter the country code followed by phone number and press send, or wait 5 seconds for the number to be automatically dialed.
4. The phone will display the message **Connecting** and the dialed number.
5. When the call is answered the phone will display the number of the person dialed and a call timer.

Speakerphone button

Depress this button to place a call using the phone's speaker and microphone; this has the same effect as lifting the handset. Depress the button again to end the call.

Lifting the handset at any time will transfer the call to the handset. A call may be transferred from the handset to speaker just by pressing the speakerphone button and replacing the handset in the cradle.

See Location of controls on page 5 and Placing a call on page 11.

Alarm clock button

Select this button to set the alarm time or turn the alarm on or off. See Location of controls on page 5 and Clock on page 42 for more information.

Text messaging button

Press the text message button will go directly to the messaging menu. From here it is possible to send a message, reply to a message, etc.

* See System dependant features on page 28. See Location of controls on page 5 and Messaging on page 37 for more information.

Text entry

Either to send a message or simply enter a name in the phone book, the method to enter text will be the same.

Alphanumeric text entry is accomplished using the “multi-tap” method.

1. Using the [*] key, select the entry mode, either: ABC, abc, 123 or pre-defined phrases, such as, **Happy Birth Day**, **Best wishes** and so forth which can be selected by 4-way navigation key.
2. The cursor will blink on the screen at the point of text entry. Using the 4-way navigation key move the cursor to the desired location.
3. Press a keypad key repeatedly to cycle through its characters. When the key is not pressed for more than 1.5 seconds that character will hold. Pressing and holding a numeric key for more than two seconds will insert the number associated with that key.

The phone supports the following characters:

Numeric Key	Upper Case	Lower Case
[1]	<space>	<space>
[2]	A B C 2	a b c 2
[3]	D E F 3	d e f 3
[4]	G H I 4	g h i 4
[5]	J K L 5	j k l 5
[6]	M N O 6	m n o 6
[7]	P Q R S 7	p q r s 7
[8]	T U V 8	t u v 8
[9]	W X Y Z 9	w x y z 9
[0]	, . ! ? #	, . ! ? #
[*]	<case switch: ‘abc’, ‘ABC’, ‘123’, ‘PHRA’>	
[#]	symbol menu	

Advanced Features

The symbol menu offers the following additional characters:

!	“	#	\$	%	&	'	(
)	*	+	,	-	.	/	:
;	<	=	>	?	@	[\
]	^	—	`	{		}	

Display the phone's number

This option will display the telephone number or numbers. See Display the phone's number on page 33.

System dependant features

The following features are system dependant; this means their functionality is controlled by your wireless carrier or network service provider.

- Text messaging
- Voicemail
- Call waiting
- Caller Id
- Call forwarding
- Call barring
- Automatic clock update

If these features do not appear to be working, they may not be enabled. Please contact your wireless carrier / network service provider.

Phone book

Press the middle soft-key to enter the menu. Select the **Phone Book** icon and press **OK**.



In phone book you can store and manage contact information, such as name, number, and one-touch dialing. **For information on text entry see Text entry on page 27.**

or

If either the right or left soft-keys have been programmed for the phone book (soft-key action indicator display's **Book**), it is possible to enter the search sub-menu of phone book by pressing this soft-key. For information on programming the soft-keys see Shortcut keys on page 48.

Create a new phone book entry

1. Press the middle soft-key to enter the menu.
2. Using the 4-way navigation key select the **Phone Book** icon and press **Select**.
3. Using the 4-way navigation key highlight **New Entry** and press **Select**. An empty record appears
4. Using the 4-way navigation key select **Name**, **Number** or **Location** respectively, then select **Change**.
5. Fill in the required information in each item and press **OK**.
6. Then press **Done** and the phone will confirm that the entry has been saved.

Dial a number from the phone book

1. Select soft-key **Book** or
 - a. Press the middle soft-key to enter the menu.
 - b. Using the 4-way navigation key select the **Phone Book** icon and press **OK**.
 - c. Using the 4-way navigation key highlight **Search** and press **OK**.
2. The list of phone book entries will be displayed in alphabetical order. To narrow the search, enter the first letter of the name using the number keys. For more information on text entry see Text entry on page 27.
3. Using the 4-way navigation key highlight the number to be dialed and press **Select**.
4. Press **Dial** or **send key**, and the phone will dial the number.

Delete phone book entries

1. Select soft-key **Book** or
 - a. Press the middle soft-key to enter the menu.
 - b. Using the 4-way navigation key select the **Phone Book** icon and press **Select**.
 - c. Using the 4-way navigation key highlight **Search** and press **Select**.
2. Using the 4-way navigation key highlight the number to be deleted and select **Opt**.
3. Using the 4-way navigation key highlight **Delete Entry** and press **Select**.

Edit phone book entries

1. Select soft-key **Book** or

- a. Press the middle soft-key to enter the menu.
- b. Using the 4-way navigation key select the **Phone Book** icon and press **Select**.
- c. Using the 4-way navigation key highlight **Search** and press **Select**.
2. Using the 4-way navigation key highlight the number to be edited and select **Opt**.
3. Using the 4-way navigation key highlight **Edit Entry** and press **Select**.
4. Using the 4-way navigation key select **Name**, **Number** or **Location** respectively, then select **Change** and **OK** for each one.
5. Then press **Done** and the phone will display **Saving** to confirm that the changes have been saved.

Assign ring tone to a number

1. Select soft-key **Book** or
 - a. Press the middle soft-key to enter the menu.
 - b. Using the 4-way navigation key select the **Phone Book** icon and press **Select**.
 - c. Using the 4-way navigation key highlight **Search** and press **Select**.
2. Using the 4-way navigation key select the entry to assign a ring tone to. Press **Select**.
3. Confirm that the correct record has been selected and press **Opt**. Using the 4-way navigation key it is possible to scroll through the records from this screen.
4. Using the 4-way navigation key select **Special Ring Tone** and press **Select**.
5. Using the 4-way navigation key highlight the preferred tone and press **Select**.

Remove ring tone from a number

To remove a previously assigned ring tone, follow the instructions above to assign a ring tone. New tone will replace the old one.

Assign one-touch dialing keys

1. Select soft-key **Book** or
 - a. Press the middle soft-key to enter the menu.
 - b. Using the 4-way navigation key select the **Phone Book** icon and press **Select**.
 - c. Using the 4-way navigation key highlight **Search** and press **Select**.
2. Using the 4-way navigation key select the entry to assign a one-touch dial key to. Press **Select**.
3. Confirm that the correct record has been selected and press **Opt**. Using the 4-way navigation key it is possible to scroll through the records from this screen.
4. Using the 4-way navigation key highlight **Edit Entry** and press **Select**.
5. Using the 4-way navigation key select **Location** and press **Change**.
6. Enter a number (2 through 9) at the prompt and press **Select**.

Check phone memory capacity

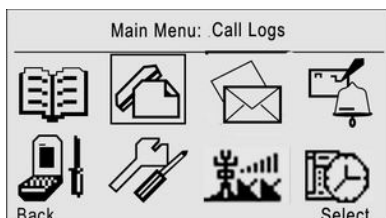
1. Press the middle soft-key to enter the menu.
2. Using the 4-way navigation key select the **Phone Book** icon and press **Select**.
3. Using the 4-way navigation key highlight **Check Memory** and press **Select**.
4. The phone will momentarily display the total records **In Use** and the total records **In Free**.

Display the phone's number

1. Press the middle soft-key to enter the menu.
2. Using the 4-way navigation key select the **Phone Book** icon and press **Select**.
3. Using the 4-way navigation key highlight **Search** and press **Select**.
4. Using the 4-way navigation key highlight the name of the desired number and press **Select**.
5. The phone will display the telephone number of that name.

Call logs

Press the middle soft-key to enter the menu. Select the **Call Logs** icon and press **Select**.



The call logs menu option lists the last 300 numbers dialed, missed, and received by this phone.

or

If either the right or left soft-keys have been programmed for the call logs (soft-key action indicator displays **Logs**), press this key to enter call logs. For information on programming the soft-keys see *Shortcut keys* on page 48.

View or dial a number from a call log

1. Enter the **Call log** menu; using the 4-way navigation key selects the desired call log and press **Select**.
 - a. To view the details of a number press **View**.
 - b. To dial a number press **Dial**, lift the handset and the phone will dial the number.

Delete an individual entry

1. Enter the call log menu; using the 4-way navigation key select the desired call log and press **Select**.

Call Logs

2. Select the number to delete and press **View**.
3. Confirm this is the number and press **Opt**.
4. Using the 4-way navigation key highlight **Delete Record** and press **OK**.

Copy to phone book

This feature allows the transfer of entries from one of the call logs to the phone book.

1. Enter the call log menu; using the 4-way navigation key select desired call log and press **Select**.
2. Select the number to copy and press **View**.
3. Confirm this is the number and press **Opt**.
4. Using the 4-way navigation key highlight **Copy to Phone Book** and press **Select**.
5. Using the 4-way navigation key select **Name, Number** or **Location**, then select **Change**.
6. Make the changes and press **OK**.
7. Then press **Done** and the phone will confirm that the changes have been saved.

Delete call logs

1. Enter the call log menu; using the 4-way navigation key selects **Delete All Calls** and press **Select**.
2. Using the 4-way navigation key highlight to be deleted call log. Press **Select**, and records will be cleared.

Messaging

If there are no unread (new) messages in inbox the text message button will go to the text messaging menu.

See Location of controls on page 5 and Text messaging button on page 26 for more information.

Press the middle soft-key to enter the menu. Select the **Messaging** icon and press **Select**.



In text messaging it is possible to create, edit, forward and reply to text messages sent to the phone. Messages can be up to 160 characters in length. For information on text entry see Text entry on page 27.

Create and send new messages

1. Enter the text messaging menu; using the 4-way navigation key highlight **Create New Message** and Press **Select**.
2. Enter text using the numeric keys or switch [*] and [#] to enter predefined messages and symbols. See Text entry on page 27 for more information.
3. When the message is complete, press **OK**.
4. Either enter a telephone number and press **Send** or press **Opt** to select a number from the phone book.
5. Using the 4-way navigation key highlight **Get from Phone Book** and press **Select**.

Messaging

6. Using the 4-way navigation key highlight the name or number of the person and press **Select**.
7. If the number is correct press **Send**, if not select **Opt** to re-enter the number.

Inbox

Read a new message in inbox

Press the text messaging button to go to message menu:

1. Enter the text messaging menu; using the 4-way navigation key highlight **Inbox** and press **Select**.
2. Using the 4-way navigation key highlight the number of the message to be read and press **Read**.

Read a message in inbox

1. Enter the text messaging menu; using the 4-way navigation key highlight **Inbox** and press **Select**.
2. Using the 4-way navigation key highlight the number of the message to be read and press **Read**.

Reply to a message in inbox

1. Enter the text messaging menu; using the 4-way navigation key highlight **Inbox** and Press **Select**.
2. Using the 4-way navigation key highlight the number/message to send a reply to and press **Opt**.
3. Using the 4-way navigation key highlight **Reply** and press **Select**.
4. Enter text using the numeric keys or switch [*] and select [#] to enter predefined messages and symbols.
5. When the message is complete, press **OK**.
6. Make sure to send the message or give up and highlight the “Confirm” or “Cancel”. Press **Select**.

Forward a message in inbox

Messaging

1. Enter the text messaging menu; using the 4-way navigation key highlight **Inbox** and Press **Select**.
2. Using the 4-way navigation key highlight the number/message to be forwarded and press **Read**.
3. Press **Opt**.
4. Using the 4-way navigation key highlight **Forward** and press **Select**.
5. Enter the phone number to forward the message with numeric keys and press **Send**.

Delete a message

1. Enter the text messaging menu; using the 4-way navigation key highlight **Inbox** and press **Select**.
2. Using the 4-way navigation key highlight the message to be deleted and press **Opt**.
3. Using the 4-way navigation key highlight **Delete** and press **Select**.

Call back

1. Enter the text messaging menu; using the 4-way navigation key highlight **Inbox** and press **Select**.
2. Using the 4-way navigation key highlight the message to call back and press **Opt**.
3. Using the 4-way navigation key highlight **Call Back** and press **Select**.
4. Confirm the number is correct and press **Select**.

Sent messages

Read sent message

1. Enter the Text messaging menu, using the 4-way navigation key highlight **Sent** and press **Select**.

Messaging

2. Using the 4-way navigation key highlight the message to be read and press **Read**.

Resend sent message

1. Enter the text messaging menu; using the 4-way navigation key highlight **Sent** and press **Select**.
2. Using the 4-way navigation key highlight the message to be re-sent and press **Read**.
3. Then, press **Opt**.
4. Using the 4-way navigation key highlight **Resend** and press **Select**.

Forward sent message

1. Enter the text messaging menu; using the 4-way navigation key highlight **Sent** and press **Select**.
2. Using the 4-way navigation key highlight the message to be forwarded and press **Read**.
3. Then, press **Opt**.
4. Using the 4-way navigation key highlight **Forward** and press **Select**.
5. Enter the phone number to forward the message with numeric keys and press **Send**.
6. Either Enter the phone number to forward the message with numeric keys and press **Send** or press **Opt** to select a number from the phone book.
7. Using the 4-way navigation key highlight **Get From Phone Book** and press **OK**.
8. Using the 4-way navigation key highlight the name or number of the person and press **Select**.
9. If the number is correct, press **Send**. If not select **Opt** to re-enter the number.

Delete sent message

1. Enter the text messaging menu; using the 4-way navigation key highlight **Sent** and press **Select**.
2. Using the 4-way navigation key highlight the message to be deleted and press **Read**.
3. Then, press **Opt**.
4. Using the 4-way navigation key highlight **Delete** and press **Select**.

Delete All SMS

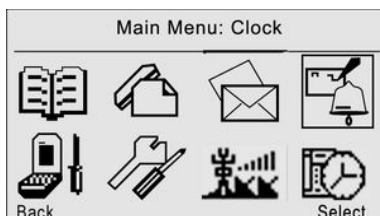
1. Enter the text messaging menu; using the 4-way navigation key highlight **Delete ALL SMS** and press **Select**.
2. Using the 4-way navigation key highlight the message log to be deleted and press **Select**.
3. The record will be cleaned.

Clock

Press the alarm clock button. See Location of controls on page 5 for more information.

or

Press the middle soft-key to enter the menu. Highlight the **Clock** icon and press **Select**.



In the clock menu you can set system time and alarm clock

Time Settings

1. Enter the Clock menu; using the 4-way navigation key highlight **Time Settings** and press **Select**.
2. Using the 4-way navigation key adjust year, month, date, hour, minute, and second. Press **Confirm**.

Alarm Clock

1. Enter the Clock menu, press **Select**.
2. Using the 4-way navigation key highlight **Clock** and press **Select**.
3. Using the 4-way navigation key highlight any one item and press **Select**.
4. Using the 4-way navigation key highlight **Edit Alarm** or **Cancel Alarm**. And press **Select**.

Clock

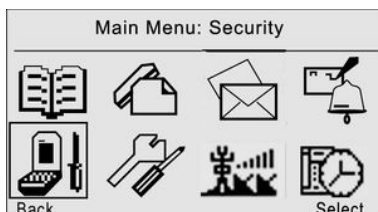
5. Using the 4-way navigation key to adjust the hour, minute and second. Press **Confirm**.
6. Input some makeup about the alarm clock, such as schedule, important event, and press **Ok**.
7. Using the 4-way navigation key highlight either **confirm** or **Cancel**, and press **Select**.

Auto Clock Update

1. Enter the Clock menu, press **Select**.
2. Using the 4-way navigation key highlight **Auto Clock Update** and press **Select**.
3. Using the 4-way navigation key highlight **Activate or deactivate** and press **Select**.

Security

Press the middle soft-key to enter the menu. Select the **Security** icon and press **OK**.



In Security it is possible to activate PIN lock, lock phone, change user password, and clear user password. A password is needed before entering sub menu. Default password is 12345.

PIN Lock

With PIN lock enabled the phone will request this PIN code each time the phone is powered up. This code is set by the network service provider and may or may not be supplied.

- This code is user changeable provided the existing code is known.
- If this code is entered incorrectly 3 times consecutively the phone will lock. When the phone is locked only emergency calls may be placed.
- The PIN Unblocking Key (PUK1) is required to unlock the phone. Contact your network service provider.

Setup PIN Protect

1. Press the middle soft-key to enter the menu.
2. Using the 4-way navigation key select the **Security** icon and press **Select**.
3. A password is required. The default password is 12345.
4. After inputting password press **Confirm**.

5. Using the 4-way navigation key highlight **PIN Lock**, and press **Select**.
6. Using the 4-way navigation key select **Active PIN Protect**, and press **Select**.
7. You are required to input a new PIN code. After complete PIN code (four digits) inputting press right soft key.
8. You will be reminded on the LCD **PIN protect activated**.
9. You are required to enter the four digits code when the phone power on next time.

Cancel PIN Protect

According to the above procedure, we can activate the PIN protect. Now, you can also cancel it by the following:

1. Press the middle soft-key to enter the menu.
2. Using the 4-way navigation key select **Security** icon and press **Select**.
3. A password is required. The default password is 12345.
4. After inputting password press **Confirm**.
5. Using the 4-way navigation key highlight **PIN Lock**, and press **Select**.
6. Using the 4-way navigation key select **Cancel PIN Protect**, and press **Select**.
7. You are required to input a PIN code, which was set in last procedure. After completing PIN code inputting press right soft key.
8. You will be reminded on the LCD **PIN protect has been canceled**.
9. You can not be required to enter the four digits code when the phone power on next time.

Change PIN Code

If a PIN code has been set and you want change it, please follow the following:

1. Press the middle soft-key to enter the menu.
2. Using the 4-way navigation key select **Security** icon and press **Select**.
3. A password is required. The default password is 12345.
4. After inputting password press **Select**.
5. Using the 4-way navigation key highlight **Change PIN Code**, and press **Select**.
6. You are required to input the old PIN code (four digits). After completing PIN code inputting press right soft key.
7. Note: Default PIN Code is 1234
8. Using the 4-way navigation key highlight **Change PIN Code**, and press **Select**.
9. You are required to enter the **old PIN** and **new PIN code**, and press right soft key.

Lock the phone

When the phone is locked it is not possible to dial numbers using the other card on the phone. It is possible to receive calls.

1. Enter the Security menu, using the 4-way navigation key highlight **Lock Phone** and press **Select**.
2. Using 4-way navigation key highlight “Active” or “cancel” to lock the phone or unlock the phone and press **Select**.
3. The phone will display a message that the phone is locked and then return to the standby screen.

Change User Password

User password is needed before entering sub menu. Default password is 12345.

1. Enter the security menu; using the 4-way navigation key highlight **Change User Password** and press **Select**.
2. You are required to enter the old password. After inputting the old password (five digits) press **Confirm**.

Note: default password is 12345

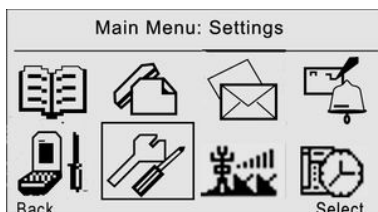
3. Enter new password and press **Confirm**.
4. If the password input is not the same, you will be reminded **Password error**.

Clear User Password

1. Enter the security menu; using the 4-way navigation key highlight **Clear User Password** and press **Select**.
2. You will be reminded to enter the password.
3. After entering the password press **Confirm**.
4. “User password has been cleared” will be on the LCD.

Settings

Press the middle soft-key to enter the menu. Select the **Settings** icon and press **OK**.



In settings you can set the display, Ring and Alarm, Call control, and more.

Display settings

Screen contrast

1. Enter the settings menu; using the 4-way navigation key highlight **Display** and press **Select**.
2. Using the 4-way navigation key highlight **Screen Contrast** and press **Select**.
3. Use the 4-way navigation key to move the bars on the bar graph and press **Select**.

Screen Saver Select

1. Enter the settings menu; using the 4-way navigation key highlight **Display** and press **Select**.
2. Using the 4-way navigation key highlight **Screen Saver Select** and press **Select**.
3. Using 4-way navigation key to select the desired item press **Select**.

Screen Saver Timeout

1. Enter the settings menu; using the 4-way navigation key highlight **Display** and press **Select**.
2. Using the 4-way navigation key highlight **Screen Saver Timeout** and press **Select**.
3. Using 4-way navigation key to select the desired item press **Select**.

Backlight Control

1. Enter the settings menu; using the 4-way navigation key highlight **Display** and press **Select**.
2. Using the 4-way navigation key highlight **Backlight Control** and press **Select**.
3. Using the 4-way navigation key highlight wait 10 seconds ...Always **On If AC, Always off** and press **OK**.

Shortcut keys

1. Enter the settings menu; using the 4-way navigation key highlight **Display** and press **Select**.
2. Using the 4-way navigation key highlight **Shortcut Keys** and press **Select**.
3. Using the 4-way navigation key highlight either **Left Shortcut Key** or **Right Short Key** and press **Select**.
4. Using the 4-way navigation key highlight the preferred option and press **OK**.

Software Version

1. Enter the settings menu; using the 4-way navigation key highlight **Display** and press **Select**.
2. Using the 4-way navigation key highlight **Software Version** and press **Select**.
3. Now, you can check the detail information of the software.

Ring and Alarm

Ringing Tones

1. Enter the settings menu; using the 4-way navigation key highlight **Ring and Alarm** and press **Select**.
2. Using the 4-way navigation key highlight **Ringing Tones** and press **Select**.
3. Using the 4-way navigation key highlight **Ring Tone, alarm Tone or New Message Tone** and press **Select**.
4. Using the 4-way navigation key select the preferred tone and press **Select**.

Ringing Volume

1. Enter the settings menu; using the 4-way navigation key highlight **Ring and Alarm** and press **Select**.
2. Using the 4-way navigation key highlight **Ringing Volume** and press **OK**.
3. Using the 4-way navigation key to move the bar to set the volume press **OK**.

Key Tone Select

1. Enter the settings menu; using the 4-way navigation key highlight **Ring and Alarm** and press **Select**.
2. Using the 4-way navigation key highlight **Key Tone Select** and press **Select**.
3. Using the 4-way navigation key highlight **Active** or **Cancel** and press **OK**.

Minute Minder

When on a call, caller will be reminded by a short tone near to 1 minute.

1. Enter the settings menu; using the 4-way navigation key highlight **Ring and Alarm** and press **Select**.

Settings

2. Using the 4-way navigation key highlight **Minute Minder** and press **Select**.
3. Using the 4-way navigation key highlight **Activate** or **Deactivate** and press **OK**.

Call Control

Automatic Redial

1. Enter the settings menu; using the 4-way navigation key highlight **Call Control** and press **Select**.
2. Using the 4-way navigation key highlight **Automatic Redial** and press **Select**.
3. Using the 4-way navigation key highlight **Activate** or **Deactivate** and press **OK**.

Call forwarding

1. Enter the settings menu; using the 4-way navigation key highlight **Call Control** and press **Select**.
2. Using the 4-way navigation key highlight **Call Forward** and press **Select**.
3. Using the 4-way navigation key highlight the preferred option and press **Select**.
4. Using the 4-way navigation key highlight **Activate** or **Deactivate** and press **OK**.
5. If it is activated, the phone will request a number to **Forward** to. Enter the number and press **OK**.

Call barring

1. Enter the settings menu; using the 4-way navigation key highlight **Call Control** and press **Select**.
2. Using the 4-way navigation key highlight **Call Barring** and press **Select**.
3. Using the 4-way navigation key highlight the preferred option and press **OK**.

Settings

4. Using the 4-way navigation key highlight **Activate** or **Deactivate** and press **OK**.
5. When selecting either **Activate** or **Deactivate** to activate or deactivate all or part of call barring the network service provider will request a 4-digit password. Enter the number and press **OK**.

Set Voice Mail No.

1. Enter the settings menu; using the 4-way navigation key highlight **Call Control** and press **Select**.
2. Using the 4-way navigation key highlight **Set Voice Mail NO**. And press **OK**.
3. Input mail number by numeric keys and press **OK**.

*Mail number only can get from local operator.

Call waiting

1. Enter the settings menu; using the 4-way navigation key highlight **Call Control** and press **OK**.
2. Using the 4-way navigation key highlight **Call Waiting** and press **OK**.
3. Using the 4-way navigation key highlight **Activate** or **Deactivate** and press **OK**.

Network Settings

Change Bands

1. Enter the settings menu; using the 4-way navigation key highlight **Network Settings** and press **Select**.
2. Using the 4-way navigation key highlight **Change Bands** and press **Select**.
3. Using the 4-way navigation key highlight the preferred bands and press **OK**.

Network Select

1. Enter the settings menu; using the 4-way navigation key highlight **Network Settings** and press **Select**.
2. Using the 4-way navigation key highlight **Network Select** and press **Select**.
3. Using the 4-way navigation key highlight preferred item, and presses **Select**.

Phone Settings

Phone ID

1. Enter the settings menu; using the 4-way navigation key highlight **Phone Settings** and press **Select**.
2. Using the 4-way navigation key highlight **phone ID** and press **Select**.
3. Inputting phone ID with numeric keys and press **OK**.

System ID

1. Enter the settings menu; using the 4-way navigation key highlight **Phone Settings** and press **Select**.
2. Using the 4-way navigation key highlight **System ID** and press **Select**.
3. Input system ID with numeric keys and press **ok**.

Master PIN

1. Enter the settings menu; using the 4-way navigation key highlight **Phone Settings** and press **Select**.
2. Using the 4-way navigation key highlight **Master PIN** and press **Select**.
3. Input master PIN and press **OK**.

CM PIN

1. Enter the settings menu; using the 4-way navigation key highlight **Phone Settings** and press **Select**.
2. Using the 4-way navigation key highlight **CM PIN** and press **Select**.
3. Input CM PIN with numeric keys (maximum 8 digits) and press **Ok**.

Printer Type

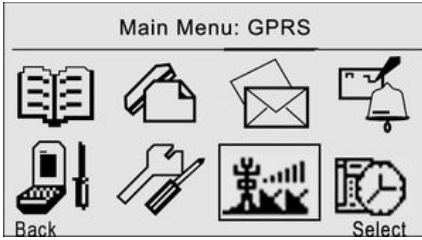
1. Enter the settings menu; using the 4-way navigation key highlight **Printer Type** and press **Select**.
2. Using the 4-way navigation key highlight either **Dot Type** or **Thermal Type** and press **Select**.

WARNING

Making changes to the network settings section may prevent the phone from functioning normally.

GPRS

Press the middle soft-key to enter the menu. Select the **GPRS** icon and press **OK**.



Wireless Modem

The phone has the function of modem. For more information, please go to Internet Service Program Installation of Basic Operation Page 13.

GPRS Connect

When the phone and EPMS exchange data:

1. Enter the GPRS menu; using 4-way navigation key highlights **GPRS Connect**, and press **Select**.
2. The phone will display user detail connecting information and call to EPMS.

GPRS Settings

IP Address

1. Enter the GPRS menu; using 4-way navigation key highlights **GPRS Settings**, and press **Select**.
2. Using 4-way navigation key highlights IP address, and press **Select**.

GPRS

3. Input IP Address with numeric keys and [*], and press OK.

Port

1. Enter the GPRS menu; using 4-way navigation key highlights **GPRS Settings**, and press **Select**.
2. Using 4-way navigation key highlights Port, and press Select.
3. Input port number with numeric keys, and press OK.

APN Server

1. Enter the GPRS menu; using 4-way navigation key highlights **GPRS Settings**, and press **Select**.
2. Using 4-way navigation key highlights APN Number, and press Select.
3. Input number of APN Service with numeric keys, and press OK.

APN User Name

1. Enter the GPRS menu; using 4-way navigation key highlights **GPRS Settings**, and press **Select**.
2. Using 4-way navigation key highlights APN User Name, and press Select.
3. Input the corresponding APN User Name with numeric keys, and press OK.

APN Password

1. Enter the GPRS menu; using 4-way navigation key highlights **GPRS Settings**, and press **Select**.
2. Using 4-way navigation key highlights APN Password, and press Select.
3. Input the corresponding APN Password with numeric keys, and press OK.

Call Back Time

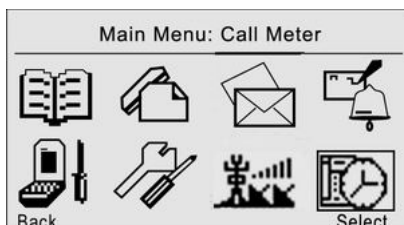
1. Enter the GPRS menu; using 4-way navigation key highlights **GPRS Settings**, and press **Select**.
2. Using 4-way navigation key highlights Call Back Time, and press Select.
3. Using 4-way navigation key highlights either Hour or Minute, and press **Edit** to edit the item.
4. After edition, press OK.

Call Interval

1. Enter the GPRS menu; using 4-way navigation key highlights **GPRS Settings**, and press **Select**.
2. Using 4-way navigation key highlights **Call Back Interval**, and press **Select**.
3. Input Call-back interval with numeric keys and press OK.

Call Meter

Press the middle soft-key to enter the menu. Select the **Call Meter** icon and press **OK**.



In Call Meter phone should be connected with Controller. You can set charging way, such as post-paid or pre-paid. Also, charging number and charging rules are set here.

Ctrl Box Off

1. Enter the Call Meter menu; using 4-way navigation key highlights **Ctrl Box Off**, and press **Select**.
2. You will be reminded to make sure you choice by pressing **Cancel** or **Confirm**.

Ctrl Box Post-paid

1. Enter the Call Meter menu; using 4-way navigation key highlights **Ctrl Box Pre-paid**, and press **Select**.
2. The phone will work under post-paid mode.

Ctrl Box Pre-paid

1. Enter the Call Meter menu; using 4-way navigation key highlights **Ctrl Box Pre-paid**, and press **Select**.
2. Get back to the stand-by state and the controller start to power on.

3. The phone will work under pre-paid mode.

Charge Settings

Charge Set 1

1. Enter the Call Meter menu; using 4-way navigation key highlights **Charge Settings**, and press **Select**.
2. Using 4-way navigation key highlights **Charge Set 1** and press **Select**.
3. Using 4-way navigation key highlights the preferred item.

Charge numbers

1. Enter the Call Meter menu; using 4-way navigation key highlights **Charge Settings**, and press **Select**.
2. Using 4-way navigation key highlights **Charge Set 1** and press **Select**.
3. Using 4-way navigation key highlights **Charge Numbers** and press **Select**.
4. Using 4-way navigation key highlights the preferred item and either press **Opt** or **Edit** to add new charge number, edit and delete or edit it directly.

New Charge Number

1. Enter the Call Meter menu; using 4-way navigation key highlights **Charge Settings**, and press **Select**.
2. Using 4-way navigation key highlights **Charge Set 1** and press **Select**.
3. Using 4-way navigation key highlights **New charge number** and press **Select**.
4. Using 4-way navigation key highlights **Num** and press **Edit**.
5. Input charge number by numeric keys and press **Ok**.
6. Using 4-way navigation key highlights **Rule ID** and press **Edit**

Call Meter

7. Input Rule ID by numeric keys and press **Ok**.
8. Press **Done** and the charge number and its corresponding rule ID will be stored in Charge numbers.

See more information about rule ID in new charge rules on page 60

Charge Rules

1. Enter the Call Meter menu; using 4-way navigation key highlights **Charge Settings**, and press **Select**.
2. Using 4-way navigation key highlights **Charge Set 1** and press **Select**.
3. Using 4-way navigation key highlights **Charge Rules** and press **Select**.
4. Using 4-way navigation key highlights the desired entry and press **Select**.
5. Either select Opt or Edit to edit and delete the item or edit the charge rules directly.

New Charge Rules

1. Enter the Call Meter menu; using 4-way navigation key highlights **Charge Settings**, and press **Select**.
2. Using 4-way navigation key highlights **Charge Set 1** and press **Select**.
3. Using 4-way navigation key highlights **New Charge Rule** and press **Select**.
4. Using 4-way navigation key and numeric keys to edit rule and press **Done**.

Charge Set 2

This column is same as charge Set 1.

Edit Date

Call Meter

1. Enter the Call Meter menu; using 4-way navigation key highlights **Charge Settings**, and press **Select**.
2. Using 4-way navigation key highlights **Edit Date** and press **Select**.
3. Using 4-way navigation key highlights either **Month** or **Day** and press **Edit**.
4. Using numeric keys to edit the items and press OK.
5. After editing the two items and press **Done**.

Rate version

1. Enter the Call Meter menu; using 4-way navigation key highlights **Charge Settings**, and press **Select**.
2. Using 4-way navigation key highlights **Rate Version** and press **Select**.
3. The rate detail information will be displayed.

*this need network to support.

Unit Cost

1. Enter the Call Meter menu; using 4-way navigation key highlights **Charge Settings**, and press **Select**.
2. Using 4-way navigation key highlights **Unit Cost** and press **Select**.
3. Input unit cost by numeric keys and press Ok.

*4 decimal positions

STD NO. Count

1. Enter the Call Meter menu; using 4-way navigation key highlights **Charge Settings**, and press **Select**.
2. Using 4-way navigation key highlights **STD No. Count** and press **Select**.
3. Input minimum length of STD number.

IDD NO. Count

1. Enter the Call Meter menu; using 4-way navigation key highlights **Charge Settings**, and press **Select**.
2. Using 4-way navigation key highlights **IDD No. Count** and press **Select**.
3. Input minimum length of IDD number.

Post paid

1. Enter the Call Meter menu; using 4-way navigation key highlights **Charge Settings**, and press **Select**.
2. Using 4-way navigation key highlights **Post Paid** and press **Select**.
3. Input post paid limit by numeric keys and press **Ok**.
Maximum post paid is 9999.

View Sales

4. Enter the Call Meter menu; using 4-way navigation key highlights **View Sales**, and press **Select**.
5. Total sales will be displayed.
6. Press **Clear** or **Back** to clear the data or get back to last menu.

Quick reference guide

Here are some of the most popular menu items.

Menu conventions

Unless otherwise indicated the left soft-key is **Back** and the right soft-key is **Select (OK)**. In the following list it is assumed that **Select** and **Back** will be selected as required.

Menu

Press the middle soft-key to enter the menu.

Phone book

Create a new phone book entry **29**

- ⇒ Phone Book
 - ⇒ New Entry
 - ⇒ Phone Number
 - ⇒ Change

Dial a number from the phone book **29**

- ⇒ Phone Book
 - ⇒ Search
 - ⇒ Select
 - ⇒ Dial

Delete phone book entries **30**

- ⇒ Phone Book
 - ⇒ Search
 - ⇒ Opt
 - ⇒ Delete Entry

Edit phone book entries **30**

- ⇒ Phone Book
 - ⇒ Search
 - ⇒ Opt
 - ⇒ Edit Entry
 - ⇒ Change

Assign ring tone to a number **31**

- ⇒ Phone Book
 - ⇒ Search
 - ⇒ Select
 - ⇒ Opt
 - ⇒ Set Ring Tone

Assign one-touch dialing keys **32**

- ⇒ Phone Book
 - ⇒ Search
 - ⇒ Select
 - ⇒ Opt
 - ⇒ One Touch Dialing

Call logs

View or dial a number from a call log **34**

- ⇒ Call Logs
 - ⇒ Dialed Calls, Received Calls, or Missed Calls
 - ⇒ View or Dial

Delete an individual entry **34**

- ⇒ Call Logs
 - ⇒ Dialed Calls, Received Calls, or Missed Calls
 - ⇒ View
 - ⇒ Opt
 - ⇒ Delete the record

Copy to phone book **35**

- ⇒ Call Logs
 - ⇒ View
 - ⇒ Opt
 - ⇒ Copy to Phone Book
 - ⇒ Change

Messaging

Create and send new message **36**

- ⇒ Messaging
 - ⇒ Create New Message
 - ⇒ New Text Message
 - ⇒ Ok
 - ⇒ Opt
 - ⇒ Enter the phone number or Get From Phone Book
 - ⇒ Select
 - ⇒ Send

Read a message in inbox 37

- ⇒ Messaging
 - ⇒ Inbox
 - ⇒ Read

Reply to a message in inbox 37

- ⇒ Messaging
 - ⇒ Inbox
 - ⇒ Opt
 - ⇒ Reply
 - ⇒ Enter text

Delete a message 37

- ⇒ Messaging
 - ⇒ Inbox
 - ⇒ Opt
 - ⇒ Delete

Call back 38

- ⇒ Messaging
 - ⇒ Inbox
 - ⇒ Opt
 - ⇒ Call Back

Clock

Time Settings 41

- ⇒ Clock
 - ⇒ Time Settings
 - ⇒ Confirm

Alarm Clock 41

- ⇒ Clock
 - ⇒ Alarm Clock

Auto Clock Update 42

- ⇒ Clock
 - ⇒ Auto Clock Update
 - ⇒ Confirm

Security

Activate PIN Lock 43

- ⇒ Security
 - ⇒ Enter password
 - ⇒ PIN Lock
 - ⇒ Active PIN protect

Activate Lock Phone 43

- ⇒ Security

- ⇒ Enter password
- ⇒ Lock phone
- ⇒ Active

Change User Password 44

- ⇒ Security
 - ⇒ Enter password
 - ⇒ Change user password
 - ⇒ Enter old password
 - ⇒ Enter new password twice

Settings

Set display 47

- ⇒ Settings
 - ⇒ Display
 - ⇒ Set Screen Contrast...
 - ⇒ Select

Set ring tones 49

- ⇒ Settings
 - ⇒ Ring and Alarm
 - ⇒ Ring Tones
 - ⇒ Set ring tone...

Set Call Control 50

- ⇒ Settings
 - ⇒ Call Control
 - ⇒ Set call forward...

Set Network 51

- ⇒ Settings
 - ⇒ Network Settings
 - ⇒ Network Select

Set phone 52

- ⇒ Settings
 - ⇒ Phone Settings
 - ⇒ Set Phone ID...

Set printer 53

- ⇒ Settings
 - ⇒ Printer Type
 - ⇒ Needle type or Hot sensitive

GPRS

Wireless Modem 54

- ⇒ GPRS
 - ⇒ Wireless Modem

Set GPRS	54
⇒ GPRS	
⇒ GPRS Settings	
Call Meter	
Set control box off	57
⇒ Call Meter	
⇒ Ctrl Box Off	
⇒ Select	
Set control box post-paid	57
⇒ Call Meter	
⇒ Ctrl Box Post-paid	
⇒ Select	
Set control box pre-paid	57
⇒ Call Meter	
⇒ Ctrl Box Pre-paid	
⇒ Select	
Set Charge Rules	58
⇒ Call Meter	
⇒ Charge settings	
View Sales	61
⇒ Call Meter	
⇒ View Sales	

Glossary of Terms

EPMS	Eagle Phone Management System
GPRS	General Packet Radio Service – packet switched (always on) data communication protocol.
GSM	originally stood for Groupe Speciale Mobile, but now it is known as Global System for Mobile communications
LCD	Liquid Crystal Display
LED	Light Emitting Diode
SIM	Subscriber Identity Module
PIN	Personal Identification Number
PUK	PIN Unblocking Key

Specifications

GSM Wireless Frequencies Supported

2W 850 MHz (Class 4)

1W 1900 MHz (Class3)

Languages

English

Physical

Size: 8.75"D x 6.75"W x 1.75"H, 223mm x 173mm x 50mm
(antenna adds 2", 50mm to width)

Weight: 1.80 lbs (818 g) without batteries

Environmental

Operating Temperature: 0°C to +50°C

Storage Temperature: -20°C to +85°C

Antenna

TNC antenna connector, 50 ohms

Power

Voltage Input: 100 – 240VAC, 50/60Hz, and 10W max.

Backup battery

Model supplied with AAA Ni-MH (rechargeable) battery pack

Supports 3 hours (min) talk time, 24 hours (min) standby

Note: The battery will need to charge for 6 hours before it will yield full capacity.

Important safety instructions

When using this phone, basic safety precautions should always be followed to reduce the risk of fire, electric shock, or personal injury. Read this information before using your phone.

1. Read and understand all instructions.
2. Follow all warnings and instructions marked on this unit.
3. Unplug this unit from AC outlets before cleaning. Do not use liquid or aerosol cleaners. Use a damp cloth for cleaning.
4. Do not use this unit near water, for example, near a bathtub, washbowl, kitchen sink, or similar.
5. Place this unit securely on a stable surface. Serious damage and / or injury may result if the unit falls.
6. Do not cover the slots and openings on the unit. They are provided for ventilation against overheating. Never place the unit near radiators, or other sources of heat, or in a place where proper ventilation is not provided.
7. Use only the power source marked on the unit. If you are not sure of the type of power supplied to your home or office, consult your dealer or local power company.
8. Do not place objects on the power cord. Install the unit where no one can step on or trip on the cord.
9. Do not overload wall outlets and extension cords. This can result in the risk of fire or electric shock.
10. Never push any objects through the slots in the unit. This can result in the risk of fire or electric shock. Never spill any liquid on the unit.
11. To reduce the risk of electric shock, do not disassemble this unit. Take the unit to an authorized dealer when service is required. Opening or removing covers may expose you to dangerous voltages or other risks and may void the warranty. Incorrect reassembly can result in electric shock when the unit is subsequently used.
12. Unplug the unit from the wall outlet and refer to a authorized dealer when the following conditions occur:

Important safety instructions

- ◆ If liquid has been spilled into the unit.
 - ◆ If the unit has been exposed to rain or water.
 - ◆ If the unit does not work normally by following the operating instructions. Adjust only the controls covered by the operating instructions. Improper adjustments may damage the unit.
 - ◆ If the unit has been dropped or is physically damaged.
 - ◆ If the unit exhibits a distinct change in performance.
 - ◆ When the power cord or plug is damaged or frayed.
13. Do not use this unit to report a gas leak when in the vicinity of the leak.
 14. NEVER attempt to remove the antenna while the phone is in use or switched on. Always disconnect the AC supply and remove the batteries before disconnecting the antenna. Failure to take this precaution may result in damage to the phone and void the warranty.
 15. The batteries are for emergency backup only. Connect the AC supply and confirm that the telephone is working normally before installing the batteries. This phone is not intended for use without the AC adapter.
 16. In the event of power failure the call may be disconnected.
 17. Replace the batteries every six months to ensure proper service in the event of power failure.
 18. Making changes to the Network Settings section may prevent the phone from functioning normally.

Exposure to radio frequency signals

Your wireless telephone is a low power radio transmitter and receiver. When it is ON, it receives and also sends out radio frequency (RF) signals.

Important safety instructions

International agencies have set standards and recommendations for the protection of public exposure to RF electromagnetic energy.

- International Commission on Non-Ionizing Radiation Protection (ICNIRP) 1996
- Verband Deutscher Elektrotechniker (VDE) DIN-0848
- United States Federal Communications Commission, Radio Frequency Exposure Guidelines (1996)
- National Radiological Protection Board of the United Kingdom, GS 11, 1988
- American National Standards Institute (ANSI) IEEE. C95.1-1992
- National Council on Radiation Protection and Measurements (NCRP). Report 86
- Ministry of Health (Canada), Safety Code 6

These standards are based on extensive scientific review. For example, over 120 scientists, engineers, and physicians from universities, government health agencies, and industry reviewed the available body of research to develop the updated ANSI standard.

The design of your phone complies with these standards when used as described under "Telephone Operation."

Operational precautions

To assure optimal phone performance and make sure human exposure to RF energy is within the guidelines set forth in the relevant standards; always adhere to the following procedures.

Antenna care

Use only the supplied approved replacement antenna. Unauthorized antennas, modifications, or attachments could damage the phone.

Do NOT hold the antenna when the phone is IN USE. Holding the antenna affects call quality and may cause the phone to operate at a higher power level than needed. In

Important safety instructions

In addition, use of unauthorized antennas may result in non-compliance with the local regulatory requirements.

Telephone operation

Do not operate your telephone when a person is within 8 inches (20 centimeters) of the antenna. A person or object within 8 inches (20 centimeters) of the antenna could impair call quality and may cause the phone to operate at a higher power level than necessary and expose that person to RF energy in excess of that established by the FCC RF Exposure Guidelines.

Data operation

When using any data feature of the phone, with or without an accessory cable, position the phone and its antenna at least 8 inches (20 centimeters) from your body.

Approved accessories

Use of accessories not approved by, including but not limited to antennas, may cause your phone to exceed RF energy exposure guidelines. For a list of approved accessories, visit our website at: www.Avvio.com.

RF energy interference/compatibility

Note: Nearly every electronic device is susceptible to RF energy interference from external sources if inadequately shielded, designed, or otherwise configured for RF energy compatibility. In some circumstances your phone may cause interference.

Facilities

Turn off your phone in any facility where posted notices instruct you to do so. These facilities may include hospitals or health care facilities that may be using equipment that is sensitive to external RF energy.

Important safety instructions

Medical devices

Pacemakers

Pacemaker manufacturers recommend that a minimum separation of 6 inches (15 centimeters) be maintained between the phone antenna and a pacemaker.

Persons with pacemakers should:

- ALWAYS keep the phone antenna more than 6 inches (15 centimeters) from the pacemaker.
- Turn OFF the phone immediately if you have any reason to suspect that interference is taking place.

Hearing aids

Some digital wireless phones may interfere with some hearing aids. In the event of such interference, you may want to consult your hearing aid manufacturer to discuss alternatives.

Other medical devices

If you use any other personal medical device, consult the manufacturer of your device to determine if it is adequately shielded from RF energy. Your physician may be able to assist you in obtaining this information.

Potentially explosive atmospheres

Turn your phone OFF, do not remove your battery when you are in any area with a potentially explosive atmosphere, and obey all signs and instructions. Sparks from your battery in such areas could cause an explosion or fire resulting in bodily injury or even death.

Areas with a potentially explosive atmosphere are often but not always clearly marked. They include: fueling areas such as gasoline stations; below deck on boats; fuel or chemical transfer or storage facilities; areas where fuel odors are present (for example, if a gas/propane leak occurs in a car or home); areas where the air contains chemicals or particles, such as grain, dust, or metal powders; and any other area where you normally would be advised to turn off your vehicle engine.

Important safety instructions

Blasting caps and areas

To avoid interfering with blasting operations, turn your phone OFF when in a "blasting area" or in areas posted: "Turn off two-way radio." Obey all signs and instructions.

Using external antennas

Your 1900 digital telephone is equipped with an antenna which screws onto the transceiver. This antenna is intended for internal use, and will provide adequate operation under normal circumstances. If you elect to install an external antenna, you must take precautions to provide adequate lightning protection for the external antenna.

External antenna installation

IMPORTANT:

To comply with the FCC RF exposure limits and satisfy the categorical exclusion requirements for mobile transmitters, the following requirements must be met:

1. A minimum separation distance of 20 cm must be maintained between the antenna and all persons.
2. The transmitter effective radiated power must be less than 1.5 Watts ERP (2.46 Watts or 33.9 dBm EIRP). This requires that the combination of antenna gain and feed line loss does not exceed 10 dBi.

Caution: Changes or modifications made in the radio phone, not expressly approved by Avvio, will void the user's authority to operate the equipment.

FDA consumer information on wireless phones

The U.S. Food and Drug Administration (FDA) provides consumer information on wireless phones at:
<http://www.fda.gov/cellphones/qa.html>

FCC RF energy interference

To maintain compliance with FCC RF exposure requirements, use handset that maintain a 25cm separation distance between the user's body and the host. MPE limit for RF exposure at prediction frequency is 0.558mW/cm² for GSM850MHz and 1mW/cm² for GSM1900MHz. The MPE for GSM850MHz is 0.357 mW/cm² and 0.169mW/cm² for GSM1900MHz. It satisfy RF exposure compliance.

This device complies with Part 15 of the FCC Rules. Operation is subject to the following two conditions:

1. This device may not cause harmful interference.
2. This device must accept any interference received, including interference that may cause undesired operation.

This equipment has been tested and found to comply with the limits for a Class B digital device, pursuant to part 15 of the FCC Rules. These limits are designed to provide reasonable protection against harmful interference in a residential installation. This equipment generates, uses and can radiate radio frequency energy and, if not installed and used in accordance with the instructions, may cause harmful interference to radio communications. However, there is no guarantee that interference will not occur in a particular installation. If this equipment does cause harmful interference to radio or television reception, which can be determined by turning the equipment off and on, the user is encouraged to try to correct the interference by one or more of the following measures:

- Reorient or relocate the receiving antenna.
- Increase the separation between the equipment and receiver.
- Connect the equipment into an outlet on a circuit different from that to which the receiver is connected.
- Consult the dealer or an experienced radio/TV technician for help

Warranty

The 1900 is built to the highest standards by CSI Wireless, LLC for Corporation. CSI Wireless warrants the product to the original retail purchaser for one year from the date of purchase for defects in materials or workmanship (except as listed below) under normal use and conditions. Such defects will be repaired or replaced at the company's option, without charge for parts or labor directly related to the defect(s). The following items are similarly warranted for a period of 90 days: antenna and AC wall charger.

THE EXTENT OF THE COMPANY'S LIABILITY UNDER THIS WARRANTY IS LIMITED TO THE REPAIR OR REPLACEMENT PROVIDED ABOVE AND, IN NO EVENT, SHALL THE COMPANY'S LIABILITY EXCEED THE PURCHASE PRICE OF THE PRODUCT.

CSI Wireless, LLC disclaim liability for cellular coverage, inadequate signal, communications range and operation of the Cellular networks as a whole.

(Back Cover)

All other product or service names are the property of their respective owners.

The information contained in this user's guides is believed to be correct at the time of printing. We reserve the right to change or modify any information or specifications without notice. The contents of this user's guides are provided "as is." Except as required by applicable law, no warranties of any kind, either express or implied, including, but not limited to, the implied warranties of merchantability and fitness for a particular purpose, are made in relation to the accuracy, reliability, or contents of this guide.

Manual Part Number: 970-00059

1900 Series User's Guide version 0.41 11/23/04

© Copyright 2004, CSI Wireless Inc., All rights reserved.