



LIYUH TECHNOLOGY LTD.

Thank you

Thank you for purchasing the **LBT324A** Bluetooth Headset. We hope you enjoy it!

This user's manual will guide you to start.
Please read the related information of the manual provides for before using your device

謝謝您

謝謝購買 LBT324A 藍芽立體聲耳機。我們希望您能感到滿意！

在使用本產品之前,請務必詳細閱讀手冊中所提供的相關資訊。

Contents

Safety Information	1
Introduction	3
Specifications	4
Description of parts	6
Start Up	8
Charging Your Headsets	8
Setup the connection of Bluetooth cell phone	10
Setup the connection of USB Bluetooth receiver	12
A2DP audio connection.....	17
AVRCP audio control	18
Functions Definition.....	19
<i>Basic Functions</i>	19
<i>Advance Functions</i>	22
Taking care of your headset	23
Troubleshooting.....	25
FAQ	26
Technical support Contact	30

目錄

安全資訊.....	31
介紹	33
規格	34
功能描述.....	36
啓動	38
充電須知.....	38
與藍芽手機連線設定.....	40
與 USB 藍芽收發器連線設定.....	42
A2DP 聲道連結	46
AVRCP 聲道控制.....	46
功能定義.....	47
基本功能	47
進階功能	50
注意事項.....	51
故障排除.....	53
FAQ.....	54
技術支援專線	57

Safety Information

Do not use **LBT324A** at high volumes for an extended time. Doing so can cause hearing loss. Always listen at moderate levels.

Use of a **LBT324A** that covers both ears will impair your ability to hear other sounds. Use of such a **LBT324A** while operating a motor vehicle or riding a bicycle may create a serious hazard to you or others, and is illegal in most regions.

Check local laws regarding use of a mobile phone and headset while driving. If you use the headset while driving, ensure your attention and focus remains on driving safely.

If driving in bad weather, high traffic density, with

children in the car, or under difficult road conditions, pull off the road and park before making or answering calls. Also, try to keep conversations short.



Introduction

LBT324A is a high performance *Bluetooth* Stereo Headset. **LBT324A** is dedicated to be designed the low power consumption with deep sleep (Standby) mode, and equipped with a high capacity and rechargeable lithium battery, so as to achieve the requirement of long operating duration. The **LBT324A** is equipped with excess processing bandwidth for integrated AV / Headset / Hands-free profile processing. **LBT324A** complies with the Bluetooth 1.2 specification. it is able to provide faster connection. **LBT324A** offers great voice quality by collocating with external CODEC and be configurable with the embedded firmware.

Specifications

Bluetooth Specification : Version 1.2,
Compatible with V1.1

Data rate : 723Kbps

Frequency range : 2.402 – 2.480 GHz
(2.4 GHz ISM Band)

Operating Distance : Up to 10m

Supported Profiles :



Operating Voltage : Charging mode : 4.2V
Under operation : 4.2V

Power consumption : Standby mode : $100\ \mu\text{A}$
Under operating : 45mA

Full recharging time : 3.8 hours

Rechargeable battery capacity : 380mAh

Continuously play the music time : 8 hours

Standby time : Up to 300hours

Weight : 80g (proximate)

Description of parts



Index	Mechanism	Feature description
1.	Multi-Function Button	Control the multi-function selection(TALK)
2.	Volume +	Adjust the speaker volume up (+)
3.	Volume -	Adjust the speaker volume down (-)
4.	Microphone	Sense the voice speaking to
5.	Charging Jack	Facilitate the charge power source plug into

6.	Recharging Indicator D3	Indicate the status of recharging
7.	D1	Status display with LED1
8.	On/Off Slide Switch	Provide Power On/Off Control
9.	D2	Status display with LED2
10.	Speakers	Output the Stereo Sound/Voice
11.	Forward/Play/ Pause	Remote control ability for Media Player (AVRCP Profile) (▶)
12.	Backward/ Stop	Remote control ability for Media Player (AVRCP Profile)(◀)

Note:

 for Multi-Function Button

 for Volume +

 for Volume -

 for Forward / Play / Pause

 for Backward / Stop

Start Up



CAUTION: The rechargeable batteries are recyclable parts. Once the batteries are never used or broken down, your product and

batteries must be recycled or disposed of properly. Contact your local recycling center for information on proper disposal. Do not dispose of batteries in a fire. The battery cells may explode.

Charging Your Headsets

Using First-Time—Before you can use your headset, you need to charge its self-contained battery for at least 4 hours.

The Procedure of Charging



1. Turn off your headset by sliding the power on/off slide switch to the off position.
2. Insert the power plug into the charge jack of the bottom of the headset.
3. Insert the 4.2 VDC power adapters into the AC outlet. Check that the **(D3)** with amber light will illuminate.
4. Go on charging until the **(D3)** light goes off.
5. Pull the plug out from the charge jack.

Setup the connection of Bluetooth cell phone

The “Pairing” is a procedure that makes the headset be a trusted device that a specific phone paired with.

Note: Without pre-pairing, the mono headset function may not work.

Pairing Code : 0000

The Procedure of Pairing

1. Power on the **LBT324A**, and **(D2)** will glitter 3 times.
2. Hold on **TALK** for 1 sec to active pairing status.
(D1) and **(D2)** will flash.
3. Perform the Bluetooth Inquiry and service discovery functions in accordance with the

procedure dedicated to the mobile phone.
(Please refer to the user's manual for the mobile phone being with.)

4. It may take a few seconds to do the inquiry, normally will not exceed 10 sec, It is observed that the **LBT324A** with headset icon will appear on the list.
5. On that screen of the mobile, select the **LBT324A** with icon on the discovered devices list.
6. Run the pairing function on the mobile, when request the PIN code or passkey, and then enter **0000**. Verify that the properly sign or prompt shows that the pairing has been done.
7. Also if the pairing is successful, the **(D1)** will flash once each 6 sec.
8. And then the Bluetooth device will connect to **LBT324A**

Setup the connection of USB Bluetooth receiver

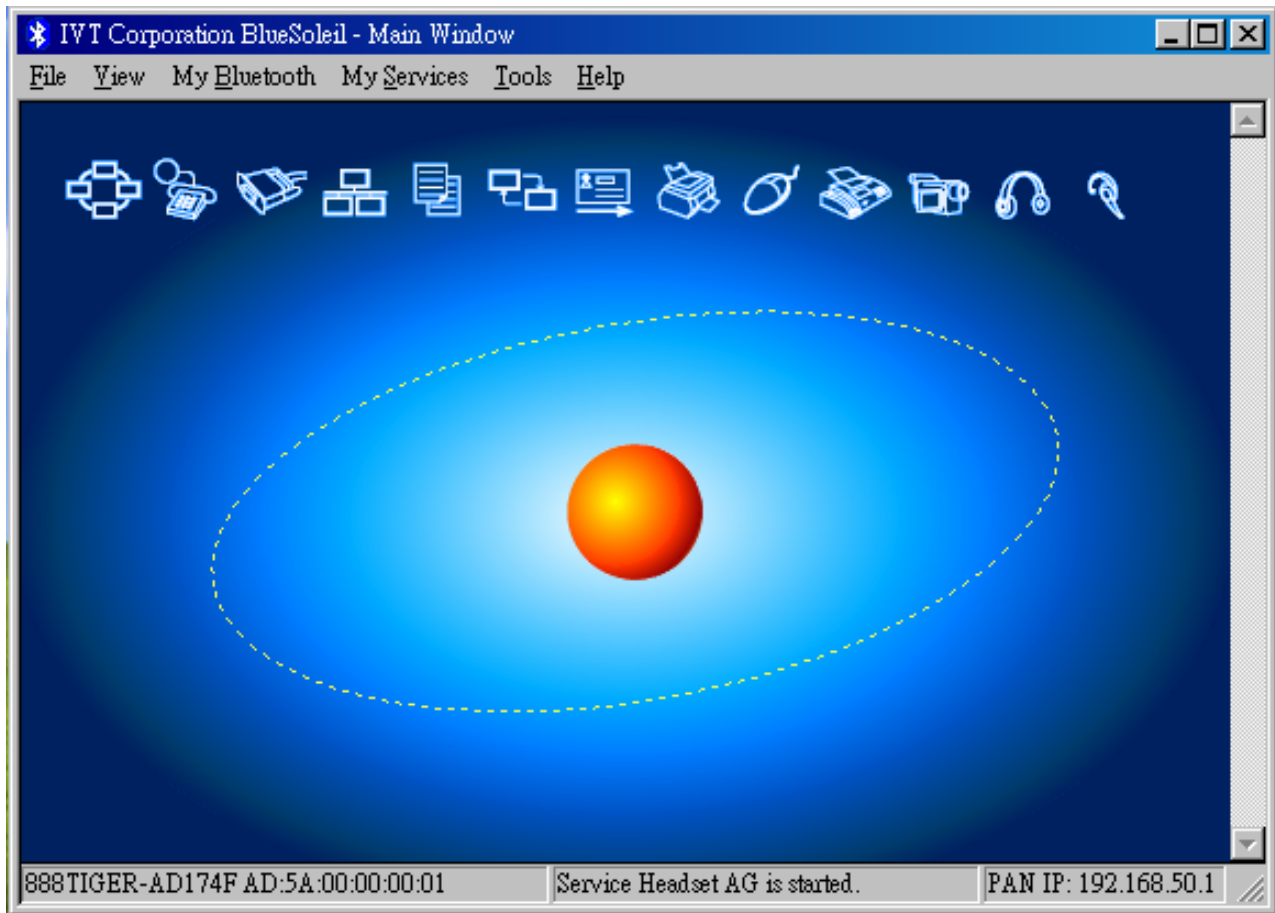
Such as IVT, Widcomm or other kind of software shall be installed on the PC in advance.

The Procedure of Pairing

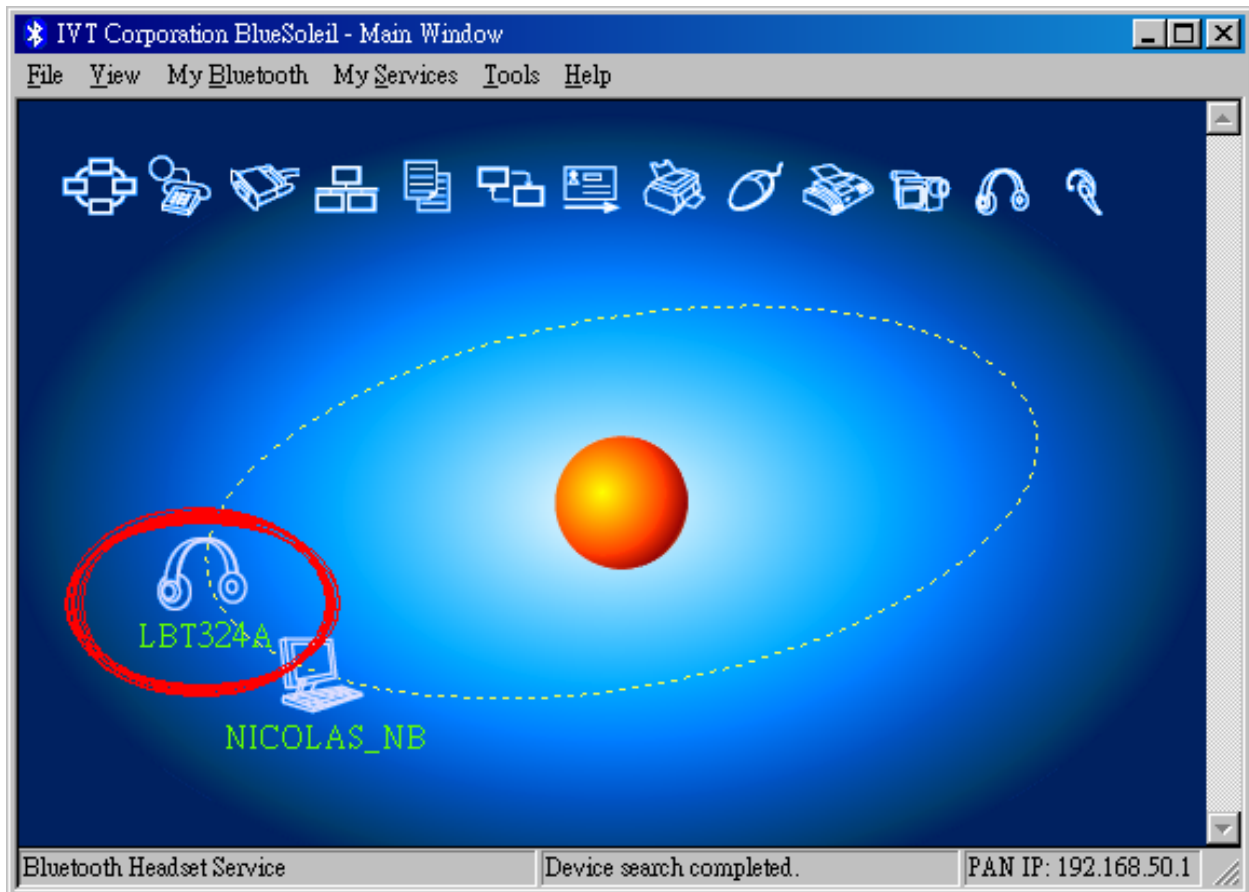
1. Power on the stereo headset and **(D2)** will glitter 3 times.
2. Hold on **TALK** for 1 sec to active pairing status.
(D1) and **(D2)** will flash.



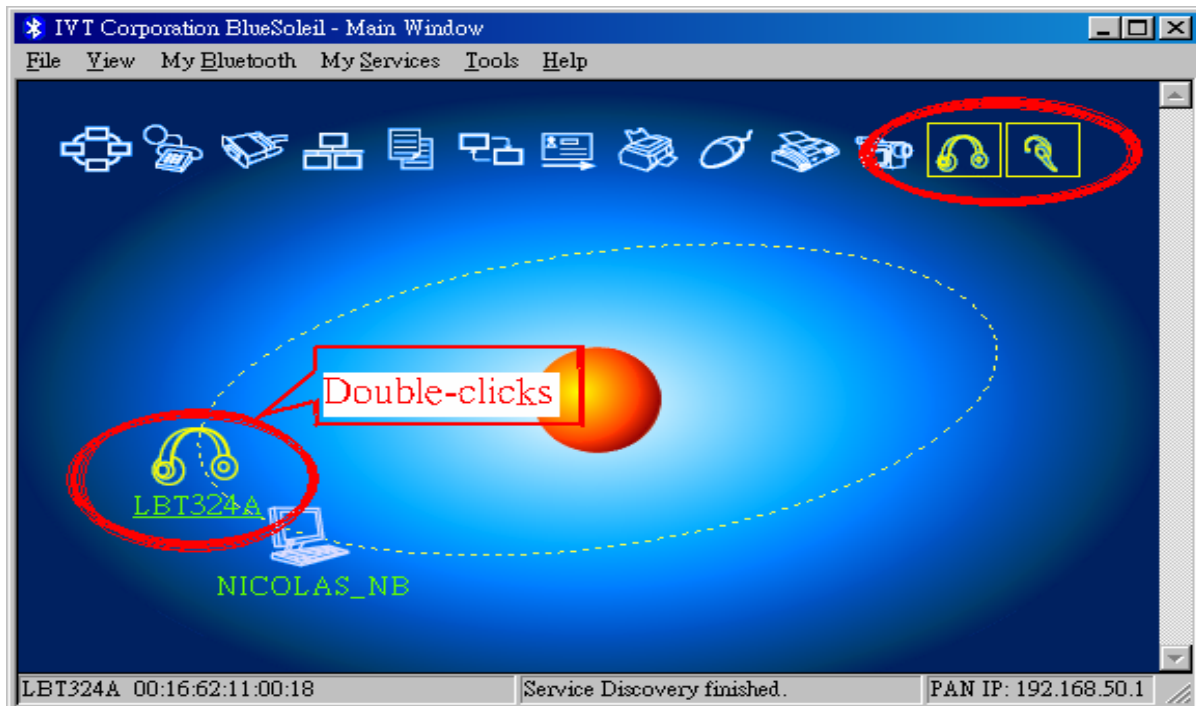
3. Bring up the *Bluetooth* application software on the computer; perform the inquiry procedure in accordance with the user manual of the application software.



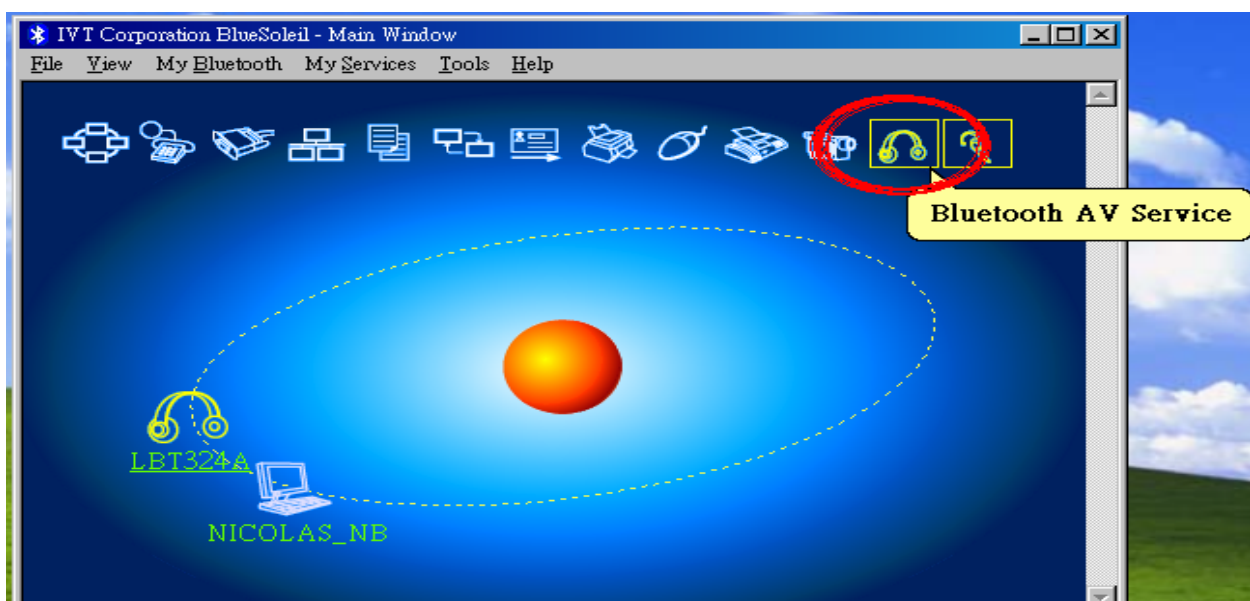
4. It may take a few seconds to do the inquiry, normally, it will not exceed 10 sec. It is observed that the **LBT324A** with headset icon will appear on the list.



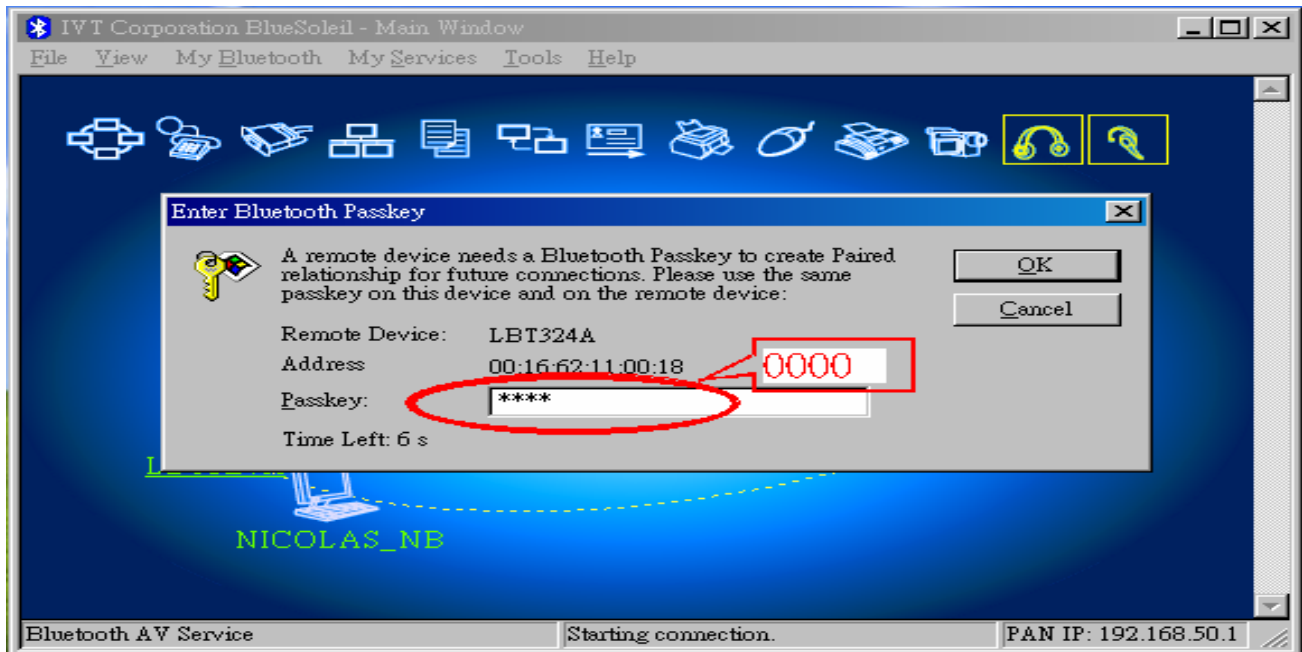
5. On that screen, double-clicks the **LBT324A** with icon on the discovered devices list. The support function will be showed on the service tool bar.



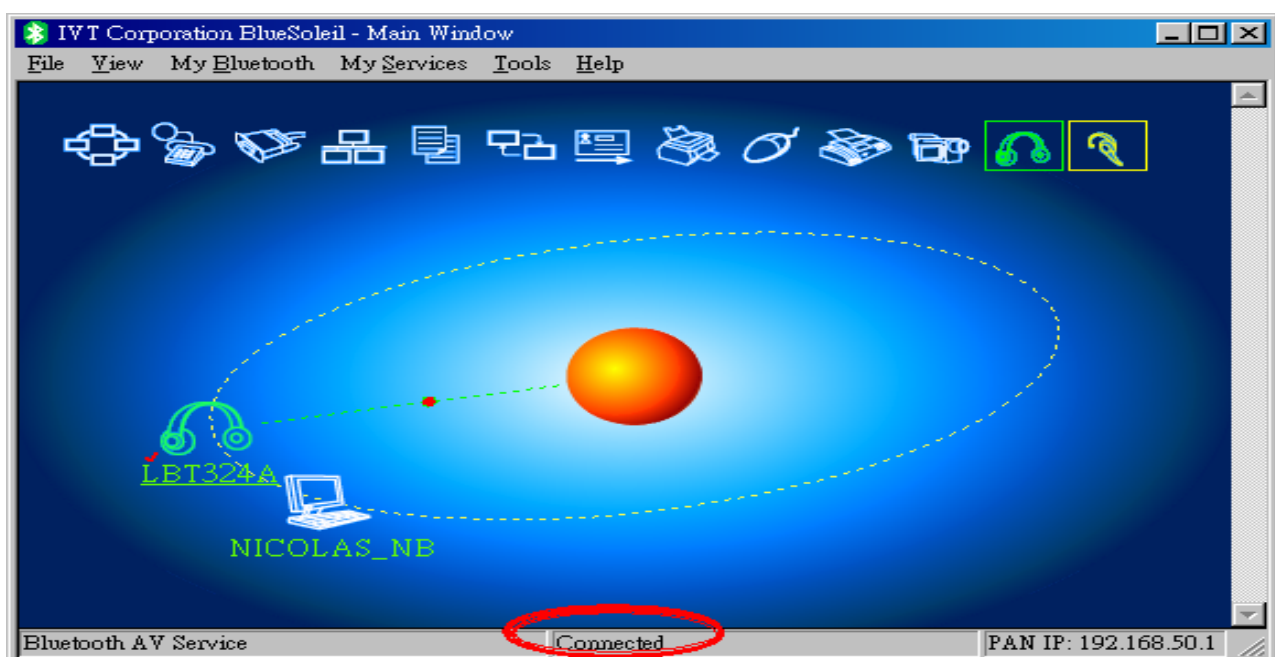
6. Click the icon of Bluetooth AV Service.



7. When request the paring code or passkey, and then enter **0000**. Verify that the properly sign or prompt shows that the pairing has been done.



8. Also if the pairing is successful, the **(D1)** will flash once each 6 sec.








A2DP audio connection

1. Continue to connect the headset by selecting the A2DP application icon and connected function. Verify that the **(D1)** will continuously glitter for 1 sec.
2. On the PC or laptop, start to play the audio files.
3. If needed, press the **Volume Up (⊕)** marked “+” once to increase the volume.
4. If needed, press the **Volume Down (⊖)** marked “—” once to decrease the volume.
5. After using the headset, just slide the power off to turn off the headset.

AVRCP audio control






When Headset is playing music from a remote source






1. To play audio, hold the  1 sec as required.
2. To stop audio, hold the  1sec as required.
3. To pause audio, hold the  1 sec as required.
4. If needed, press the  once to next track.
5. If needed, press the  once to previous track.






Functions Definition

CAUTION: Following table is the relevant function definition of operation. In case some unpredictable actions happened and result of unexpected phenomenon, please turn off the headsets and power on again.




Basic Functions

Item	Function Description					
1	Active Pairing	Hold for 1 Sec				
2	Call Answer	Press Once				
3	Call Reject	Hold for 1 Sec				
4	Call End	Press Once				
5	Initiate Call Last Dialed	Press Once				
6	Initiate Call Last Voice Dial	Press Two				

Item	Function Description					
7	Cancel Outgoing Call	Press Once				
8	Answer Call Waiting			Hold for 1 Sec		
9	Call Hold Hangup Answer Call		Hold for 3 Sec			
10	Return Call Waiting			Hold for 1 Sec		
11	Avrcp Play				Hold for 1 Sec	
12	Avrcp Pause				Hold for 1 Sec	
13	Avrcp Stop					Hold for 1 Sec
14	Avrcp Forward				Press Once	
15	Avrcp Backward					Press Once
16	Avrcp Volume Up Remote		Hold for 1 Sec			

Item	Function Description					
17	Avrcp Volume Down Remote			Hold for 1 Sec		
18	Volume Up		Press Once			
19	Volume Down			Press Once		
20	Microphone Mute	Press Four				
21	Activate Pairing as HSU		Hold for 2 Sec	Hold for 2 Sec		
22	Activate Pairing as HFU	Hold for 1 Sec	Hold for 1 Sec			

Advance Functions

Item	Function Description			
1	Call Hold Join Active		Hold for 1 Sec	
2	Call Hold End All	Press Once		
3	Call Transfer To Phone	Hold for 1 Sec		Hold for 1 Sec
4	Call Transfer	Hold for 1 Sec		Hold for 1 Sec
5	Connect To Cell Phone		Hold for 3 Sec	Hold for 3 Sec
6	Disconnect From Cell phone		Hold for 3 Sec	Hold for 3 Sec
7	Automatic Answer	Press Tree		
8	Low Battery warning	Every 10 sec alarm ones. After 30 sec auto power off. D1& D2 blinks		

Taking care of your headset

- Always store the **LBT324A** in a safe place with the power off.
- Do not put **LBT324A** at extreme temperatures (above +60°C/+140°F, including direct sunlight, or below -10°C /14°F). This can shorten device's life and may affect operation.
- Prevent rain, moisture or other liquid from coming into contact with the product to protect against damage to your product or injury you.

Federal Communication Commission Interference Statement

This equipment has been tested and found to comply with the limits for a Class B digital device, pursuant to Part 15 of the FCC Rules. These limits are designed to provide reasonable protection against harmful interference in a residential installation. This equipment generates, uses and can radiate radio frequency energy and, if not installed and used in accordance with the instructions, may cause harmful interference to radio communications. However, there is no guarantee that interference will not occur in a particular installation. If this equipment does cause harmful interference to radio or television reception, which can be determined by turning the equipment off and on, the user is encouraged to try to correct the interference by one of the following measures:

- Reorient or relocate the receiving antenna.
- Increase the separation between the equipment and receiver.
- Connect the equipment into an outlet on a circuit different from that to which the receiver is connected.
- Consult the dealer or an experienced radio/TV technician for help.

FCC Caution: Any changes or modifications not expressly approved by the party responsible for compliance could void the user's authority to operate this equipment.

This device complies with Part 15 of the FCC Rules. Operation is subject to the following two conditions: (1) This device may not cause harmful interference, and (2) this device must accept any interference received, including interference that may cause undesired operation.

IMPORTANT NOTE:

FCC Radiation Exposure Statement:

This transmitter must not be co-located or operating in conjunction with any other antenna or transmitter.

Troubleshooting

- When the device can not turn on or the music Suddenly stops : Please make sure the device power level is enough.
- When the **LBT324A** could not pair success to other device or hear some noise voice : Please make sure status is power on and keep all devices under 30 feet.
- When the **LBT324A** could not create connection to cell phone : Please delete the device in the cell phone menu and power it on again and try to connect to **LBT324A**
- ※ The device complies with the BLUETOOTH specification 1.1and 1.2 revision .But the device is not guarantees interoperability with other cell phone.

FAQ

1. What is Bluetooth?

ANS: Bluetooth technology is a cutting-edge open specification that enables short-range wireless connections.

Bluetooth wireless technology uses a globally available frequency band (2.4GHz) for worldwide compatibility.

2. What is pairing?

ANS: Pairing is the procedure of connecting two Bluetooth devices.

3. What is PIN CODE?

ANS: PIN CODE is prevents the information outflow when two Bluetooth devices are connecting.

4. Can stereo headset be used with computer and cell phone at the same time?

ANS: Yes.

5. Can stereo headset be used when charging?

ANS: No.

6. Can I modify the password input when Bluetooth devices is pairing and connecting?

ANS: No. The pin code is built in the headset, so it can not be modify.

7. Can I listen to the music using the headset?

ANS: Yes, if your Bluetooth cell phone support A2DP profile.

8. How long the distance is the headset can communicate?

ANS: The longest distance is up to 10 meters. But the environment has many interference; it can shorten the distance of communication. And some cell phone's Bluetooth communicated function is not enough to 10 meters, it can shorten, too.

9. Do I have to implement the pairing and connecting when using the headset every times?

ANS: No, if two Bluetooth devices have paired and connected, at the condition of both power on, proceed to search, and then select the connection.

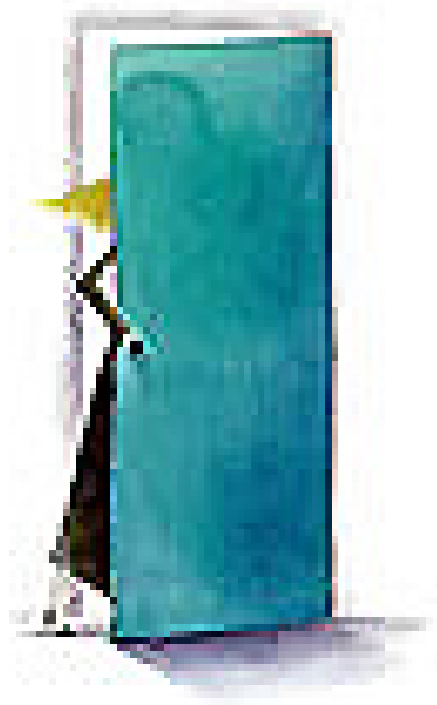
10. Why does the headset has no sound?

ANS: It is possible to following reason.

1. Your headset may not electricity. When the device power level isn't enough,

pilot lamp will flash, and charge your headset.

2. Maybe your Bluetooth cell phone is crash. If this condition is happened, reopen the headset. (not repair)



Technical support Contact

Tel: 886 2657 9295

Fax: 886 2657 7584

Operating Times:

Monday-Friday 9:30AM – 18:00PM (PST)

We'd like to hear from you. Please let us know your questions or comments on our warranty policy. Thank you for supporting LIYUH and the products of LIYUH.

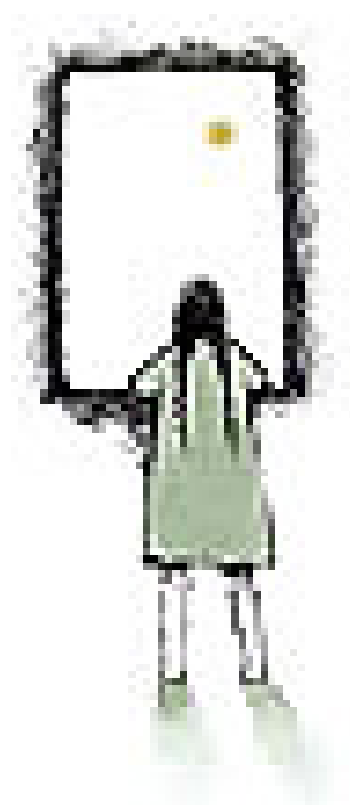
安全資訊

避免耳機長時間高音量使用，這可能會造成聽力受損，請使用適度的音量。

此產品為覆蓋兩耳使用，可能會影響你聽其它聲音的能力，在騎機車或腳踏車使用耳機，可能會造成你或其他人的事故傷害，在大多數地區也是違法的。

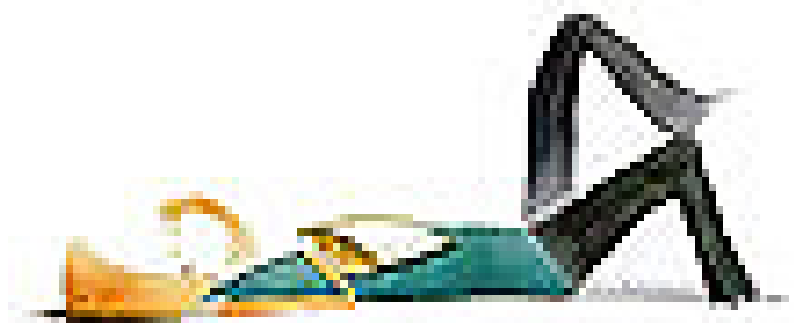
確認當地法律關於開車時行動電話的使用，如果開車時使用耳機，確保你的注意力集中在駕駛安全上。

如果行駛在惡劣的氣候中、塞車、及有小孩在車內…等的情況下，請先將車輛停靠路旁，並且盡量縮短通話時間。



介紹

LBT324A 是一款高性能的藍芽立體聲耳機。擁有低電源消耗量的功能，安裝有可充電式的高容量鋰電池，以便達成長時間操作的需要。**LBT324A** 在功能上，整合了視聽/耳機/傳輸的功用。擁有藍芽1.2規格的認證，它能提供快速的連接。此外，**LBT324A**也提供了高品質高傳輸的最佳音質。



規格

藍芽版本：1.2 版,相容 V1.1

數據傳輸速度：723Kbps

頻率範圍：2.40 – 2.48 GHz

(2.4 GHz ISM Band)

操作距離：10m

支援規範：

HSP



HFP



A2DP



AVRCP

工作電壓：充電模式：4.2V

播放中：4.2V

消耗功率：等待模式：100 μ A

播放中：45mA

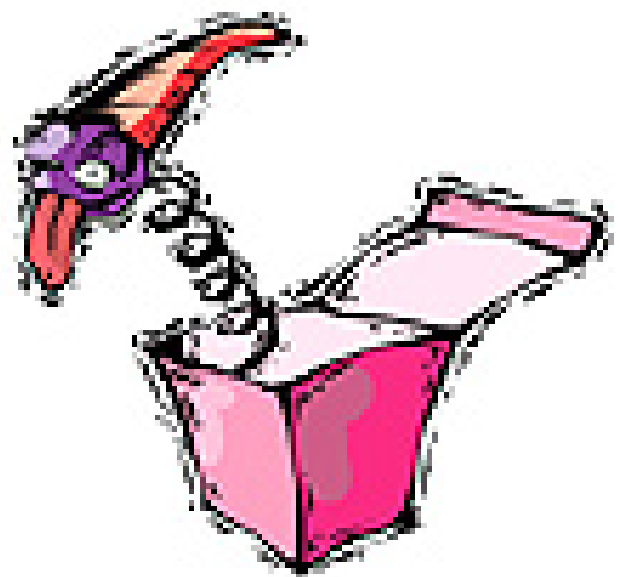
充電時間：3.8 小時

電池蓄電容量：380mAh

連續播放音樂時間：8 小時

待機時間：300 小時

重量：約 80 公克



功能描述



索引	用途	說明
1.	配對鍵	控制配對功能選擇 (TALK)
2.	音量調整鍵(+)	增音音量調整 (⊕)
3.	音量調整鍵(-)	減音音量調整 (⊖)
4.	麥克風	聲音輸出
5.	充電孔	供充電使用
6.	充電指示燈 D3	充電時指示
7.	D1	狀態顯示
8.	滑動開關	開關控制

9.	D2	狀態顯示
10.	揚聲器	立體聲音量輸出
11.	選曲(上首)/撥放/ 暫停	遙控播放器功能 (AVRCP Profile) (▶)
12.	選曲(下首)/停止	遙控播放器功能 (AVRCP Profile) (◀)

Note:

TALK 配對鍵

⊕ 音量調整鍵(+)

⊖ 音量調整鍵(-)

▶ 選曲(前進)/撥放/暫停

◀ 選曲(後退)/停止



啓動



警告：本產品使用之電池爲可回收之電池，一旦電池永不使用或損壞，請依據當地法規處理廢棄電池。切勿將電池丟在火中，以免發生爆炸之意外。

充電須知

第一次使用本產品時必需至少先充電 4 小時才能開始使用。

充電程序



1. 撥動耳機上的滑動開關，讓耳機處於關機狀態。
2. 將充電器接頭插入耳機的充電孔中。
3. 將充電器插入電源插座，檢查**(D3)**是否亮起。
4. 直到充電指示燈熄滅。
5. 耳機完全充電後，從電源插座與耳機上拔下充電器。


與藍芽手機連線設定

“配對” 是指使用耳機與特定手機能配對的一種步驟

注意：沒有預先配對，即不能使用。

配對碼：0000

配對連線程序

1. 開啓 **LBT324A** 電源，D2 將會閃爍三次。
2. 按住  約 1 秒的時間使 **(D1)** 和 **(D2)** 交閃。
3. 根據行動電話的程序進行藍芽的搜尋和服務功能。（請參考行動電話的使用說明書）
4. 搜尋的時間通常不會超過 10 秒，觀察是否有耳機圖像及產品 **LBT324A** 字樣出現。
5. 在螢幕的清單中，選擇 **LBT324A** 的圖像。

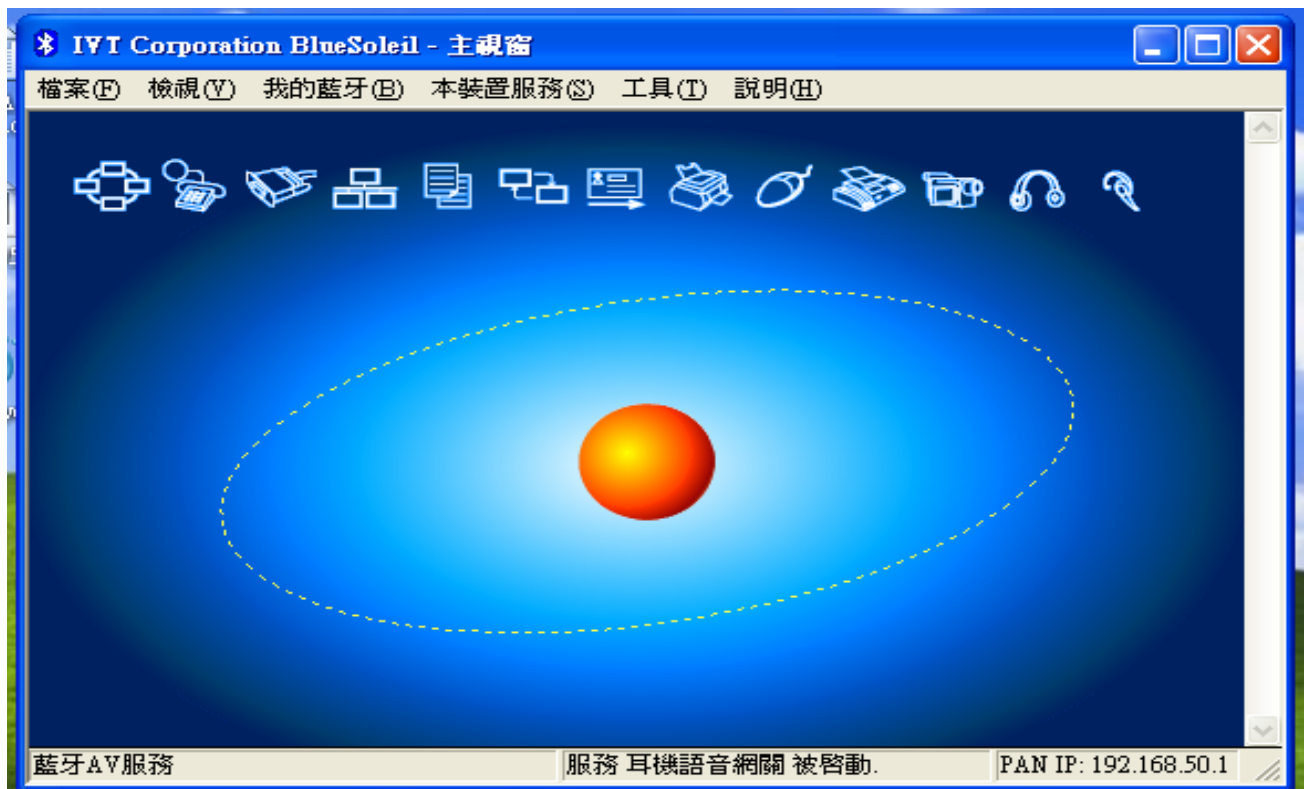
6. 手機使用配對功能，被要求密碼輸入時、請輸入 **0000**。
7. 配對成功(**D1**)將會每隔 6 秒閃爍一次。
8. 藍芽裝置將會自動與 **LBT324A** 連線。

與 USB 藍芽收發器連線設定

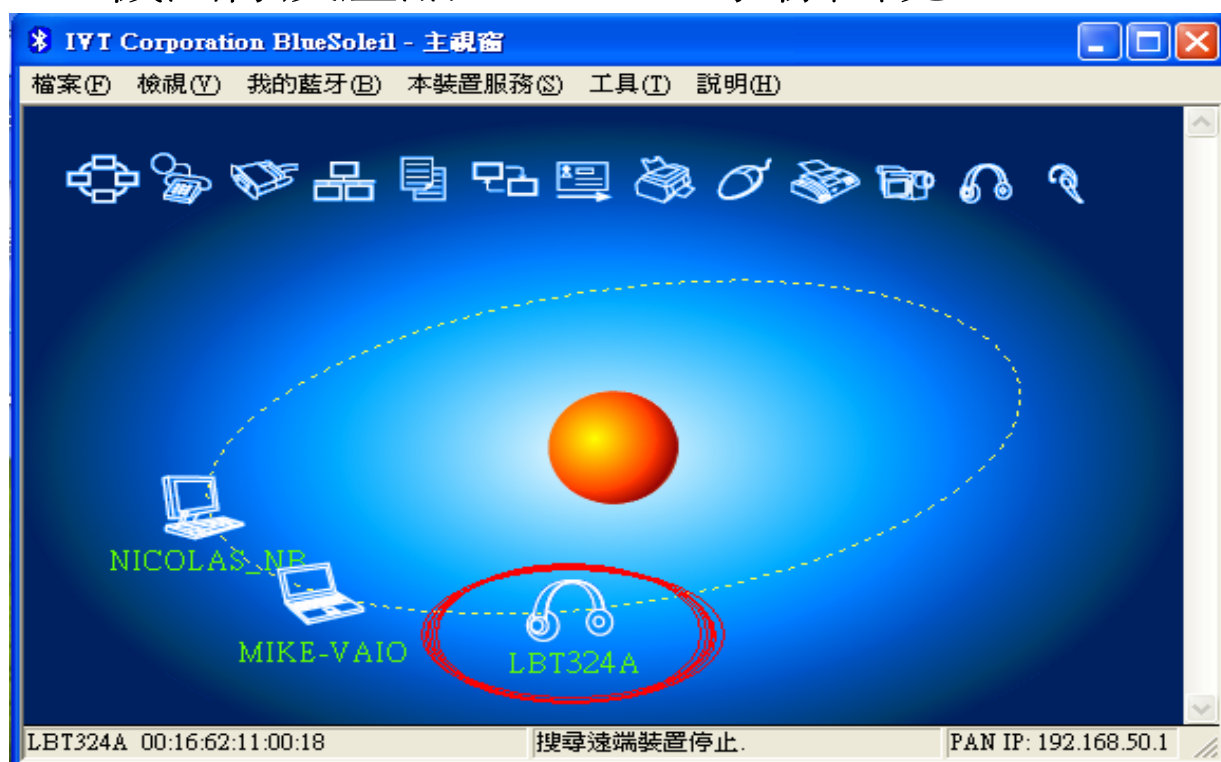
IVT、Widcomm 或是其它任何軟體，要事先安裝在電腦。

配對程序(以 IVT 為例)

1. 開啓**LBT324A**電源，**(D2)**將會閃爍三次。
2. 按住 **TALK** 1秒，使**(D1)**和**(D2)**交閃。
3. 將會呈現藍芽應用軟體在電腦上，依操作手冊來完成電腦所詢問的問題。



4. 搜尋的時間通常不會超過10秒，觀察是否有耳機圖像及產品**LBT324A**字樣出現。



5. 在螢幕的清單中，選擇**LBT324A**的圖像雙擊兩次，左上排將顯示服務項目。



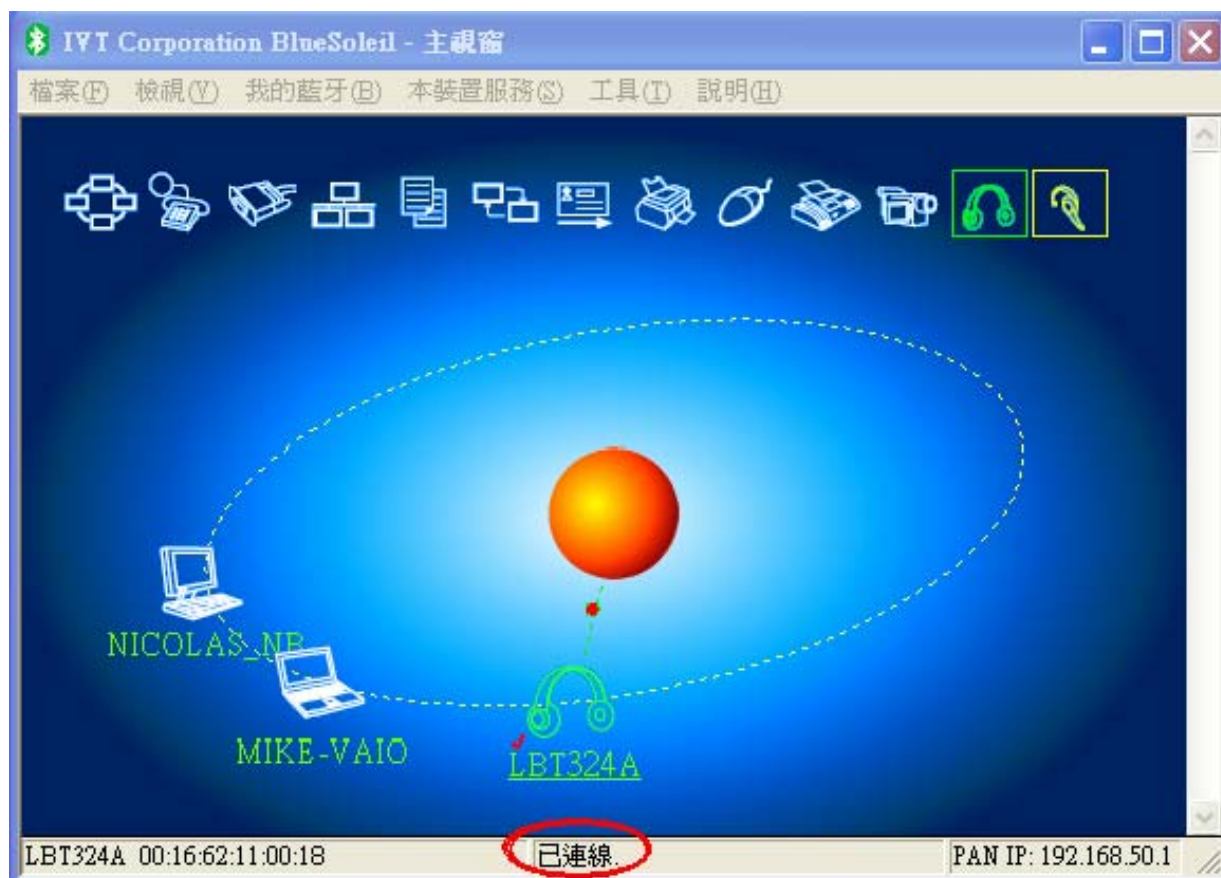
6. 選擇藍芽AV服務。





7. 當被要求輸入密碼時，請輸入 **0000** 確認無誤後，即完成配對。



8. 配對成功(D2)將會每隔6秒閃爍一次。



A2DP 聲道連結

1. 繼續是將耳機選至A2DP應用圖示與連結功能，確認後(D1)會連續閃爍1秒。
2. 在電腦端要開啓聲道的檔案。
3. 在耳機端確認後(D1)會閃爍一次。
4. 要大聲則按壓  一次。
5. 要小聲則按壓  一次。
6. 使用後即可用滑動式的開關來關機。

AVRCP 聲道控制

耳機的音樂可從遠端傳來

1. 開啓播放，按住  1秒。
2. 停止播放，按住  1秒。
3. 暫停播放，按住  1秒。
4. 按壓  一次到下一首。
5. 按壓  一次到上一首。

功能定義

注意：以下是開機運作的相關功能說明，為避免一些無預警的情形發生，請在關閉耳機後再次開機使用。

基本功能

項次	功能敘述					
1	啟動配對	壓住 1 秒				
2	接聽來電	按壓 一次				
3	拒聽來電	壓住 1 秒				
4	結束通話	按壓 一次				
5	回撥最後 撥出號碼	按壓 一次				
6	啟動語音 撥號	按壓 二次				

項次	功能敘述					
7	結束語音撥號	按壓一次				
8	耳機與來電 2 通話, 保留來電 1			壓住 1 秒		
9	耳機與來電 2 通話, 切斷來電 1		壓住 3 秒			
10	在保留通話中切換			壓住 1 秒		
11	開始播放				壓住 1 秒	
12	暫停播放				壓住 1 秒	
13	停止播放					壓住 1 秒
14	播放下一首				按壓一次	
15	播放上一首					按壓一次

項次	功能敘述					
16	控制電腦 播放聲增大		壓住 1 秒			
17	控制電腦 播放聲減小			壓住 1 秒		
18	音量增大		按壓 一次			
19	音量減小			按壓 一次		
20	麥克風 靜音	按壓 四次				
21	以 Headset 模式配對		壓住 1 秒	壓住 1 秒		
22	以 Hand-free 模式配對	壓住 1 秒	壓住 1 秒			

進階功能

項次	功能敘述			
1	啟動三方通話		壓住 1 秒	
2	切斷所有保留通話	按壓一次		
3	由手機回答來電	壓住 1 秒		壓住 1 秒
4	返回由耳機回答來電	壓住 1 秒		壓住 1 秒
5	與手機作藍芽連接		壓住 3 秒	壓住 3 秒
6	與手機作藍芽斷線		壓住 3 秒	壓住 3 秒
7	自動接聽	按壓三次		
8	電池低電位警告	每 10 秒一次警告聲,約 30 秒後關機.(D1)及(D2)同時閃爍		

注意事項

- 產品使用過後要關閉並放置安全的地方。
- 請勿將 **LBT324A** 放置在極端的溫度中(超過 +60°C /+140°F，包括陽光直射，或低於-10°C /14°F)。這將縮短電池壽命並且可能影響操作。
- 您的 **LBT324A** 是無線電傳送器也是接收器。
當 **LBT324A** 與藍芽行動裝置通訊時，傳送和接收無線電波磁場的磁頻範圍約為 2.4GHz 至 2.48GHz。
- **LBT324A** 根據交通部低功率電波輻射性電機管理辦法第十二條及第十四條規定：
 - 1.經形式認證合格之低功率射頻電機，非經許可，公司、商號或使用者均不得擅自變更頻率、加大功率或變更原設計之特性及功能。
 - 2.低功率射頻電機之使用不得影響飛航安全及干擾合法通信：經發現有干擾現象時，應立

即停用，並改善至無干擾時方得繼續使用。
前項合法通信，指依電信法規定作業之無線通信。低功率射頻電機需忍受合法通信或工業、科學及醫療用電波輻射性電機設備之干擾。

- **LBT324A** 符合美國聯邦通訊委員會(FCC)第 26 部份的規定，操作本產品需要符合以下兩種狀況：

甲、不得引起有害干擾

乙、能夠抵抗任何干擾包括可能影響

LBT324A 正常使用的干擾

- 請勿讓產品接觸到雨水或放置潮濕的地方。

故障排除

- 當耳機無法開機時或播放音樂忽然停止：請確認是否電力充足。
 - 當耳機無法配對或播放音樂有異音時：請確認是否為開機狀態以及確認是否配對過並確認所有裝置的距離是否在10公尺內。
 - 當耳機無法與手機連線時：請將手機內的藍芽裝置刪除並重新開機後，與手機再重新配對。
- ※ 此耳機相容於藍芽1.1及1.2規範，然而此耳機與其他手機的互通性不在保證範圍內。

FAQ

1.什麼是藍芽？

答: Bluetooth 為全球通用之短距離移動式無線傳輸技術標準，工作於 2.4~2.4835GHz 之 ISM 頻段，藍芽採用跳頻技術(FHSS：Frequency Hopping Spread Spectrum)來避免干擾的問題。藍芽技術的傳輸距離可分為三個等級，最短距離為 10 公尺，最長距離可至 100 公尺。

2.什麼是配對？

答：配對是連接兩個藍芽裝置所需的過程。

3.什麼是 PIN CODE ？

答：PIN CODE 是保護兩個藍芽裝置在無線連接時的資料外流。

(PIN CODE 正確才可使用)

4.立體耳機是否可以同時電腦與手機使用

答：可以。

5.充電時是否可以使用立體耳機

答：不可以。

6.我可以更改藍芽配對連線時輸入的密碼嗎？

答：不可以，因為預設密碼是直接寫入耳機本身，
所以不能被更改。

7.本耳機有效通訊距離最長為多少？

答：最長可達 10 公尺，但因為環境中有許多干擾
源，可能會縮短通訊的距離；並且，有些手機
本身的藍芽通訊功能不足 10 公尺，也會縮短
通訊距離。

8.每次使用耳機時都必須執行配對連線嗎？

答：不需要，只要兩個藍芽裝置已進行過配對連線，在兩者均開機後狀態下，進行搜尋，選擇該連線即可。

9.我可以使用藍芽手機聽音樂嗎？

答：可以。假如你的藍芽手機支援 A2DP 功能即可使用，但市面上的藍芽手機絕大部份不支援此功能。

10.為何耳機突然沒聲音了？

答：有可能是以下原因

- 1.您的耳機可能沒電了，當耳機的電量不足時，指示燈會開始閃爍，請儘速充電。
- 2.可能是您的手機藍芽功能當機了，這種情形偶爾會發生，但不多見，如果發生這種情形時，請將手機重新開機即可(無須再執行配對)。

技術支援專線

電話: 886 2657 9295

傳真: 886 2657 7584

服務時間:

星期一 ~ 星期五 9:30AM – 18:00PM (PST)

如需進一步資訊或有任何疑問，歡迎與我們連絡。
並感謝您對本公司及相關產品的支持。

