



150M/54M
Wireless Access Point
User Manual

4704

Product Description

The Wireless-N Gaming Adapter is compatible with IEEE802.11b/g/n standard, which supports data rate up to 150/54 Mbps in 2.4 GHz band. The adapter has one RJ45 port and wireless station, they bridge together. It supports WPS (Wi-Fi Protected Setup) and other security method, such as hidden SSID broadcast, The detachable antenna designed for this adapter makes it possible to replace the original antenna and upgrade for improved range. The gaming Xbox and PS3 can use this adapter to access internet or their website.

Product Features

1. Complies with 2.4GHz IEEE802.11n Draft v2.0 and backward compatible with IEEE 802.11b/g standards, support station mode.
2. RJ45 port and station bridge together.
3. High speed data rate - up to 150/54Mbps.
4. Supports Wi-Fi Protected Setup (WPS) with reset button.
5. Supports 64/128-bit WEP encryption and WPA-PSK, WPA2-PSK security.
6. Supports WMM function to meet the multimedia transmission requirement .
7. Web user interface .
8. System status and security log.
9. Firmware upgradeable.
10. Support gaming Xbox and PS3.

Product specifications

Model	47()4 (150Mbps) /AP111(54Mbps)
Standards	IEEE 802.11n,IEEE 802.11g,IEEE 802.11b,IEEE 802.3,IEEE 802.3u, TCP/IP,DHCP,ICMP
Interface Type	An A-type USB to Ethernet port
	1 x 10/100M RJ45 Port(Auto MDI/MDIX)
Frequency range	2.4~2.4835GHz
Radio Data Rate	11n: 150/130/117/104/78/52/39/26/13Mbps 65/58.5/52/39/26/19.5/13/6.5Mbps
	11g:54/48/36/24/18/12/9/6M
	11b:11/5.5/2/1M
Channel	ETSI:13 / FCC:11
Sensitivity @PER	150M:-70dBm@10% PER;130M: -70dBm@10% PER 108M:-70dBm@10% PER;54M:-72dBm@10% PER 11M:-85dBm@8% PER;6M:-88dBm@10% PER 1M:-90dBm@8% PER
RF Power	20dBm(Max)
Antennas	2dBi * 1 fixed Antennas
Cabling Type	—
Leds	Power,WLAN ,LAN,WPS
Dimensions(L x W x H)	98 x 93x 23(mm)
Power Supply	DC 9V 700mA
Operating temperature	0°C-40°C
Storage temperature	-40°C-70°C
Relative Humidity	10%-90% non condensation
Storage Humidity	5%-95% non condensation

Setup Wizard

You must have at least the following before you begin setting:

- A Wireless Access Point or Router(with Broadband Internet Connection)
- A Computer with an Ethernet Adapter
- An Ethernet Cable
- A CD-ROM(with Manual and quick installation guide)

1. Hardware installation:

1-1 connect one end of power adapter to power port of gaming adapter,other end connect into the electrical outlet.

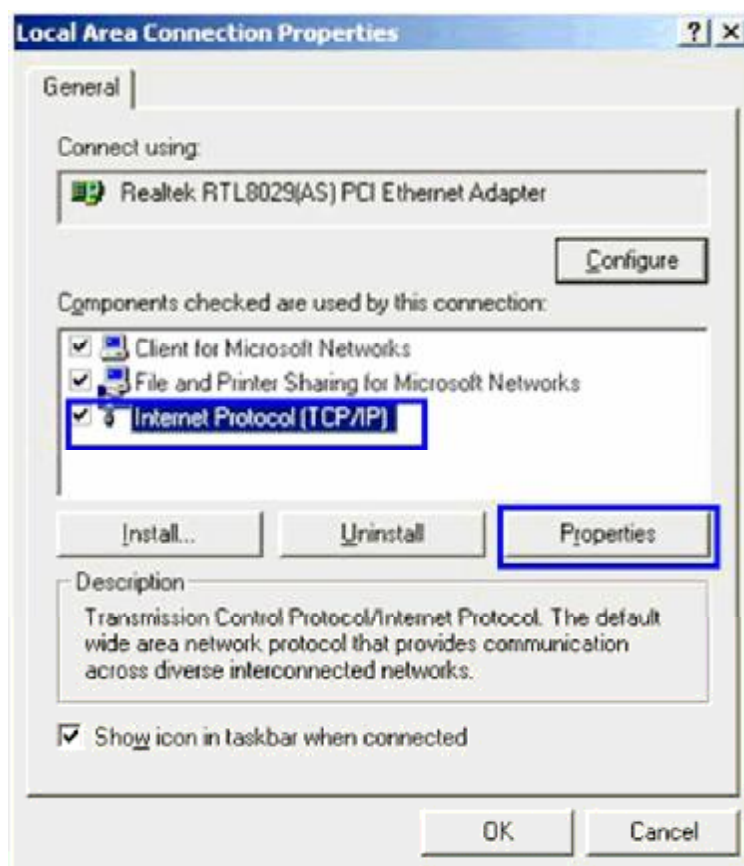
1-2 connect Ethernet cable between computer and gaming adapter's Ethernet port.

2. Software installation:

2-1 IP address setting

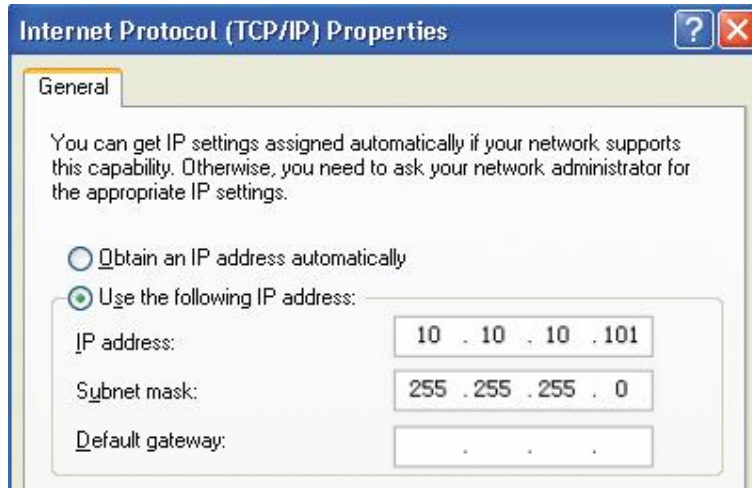
You must assign your computer a static IP address within the same range as the IP address of the Gaming adapter. The gaming adapter's default IP address is **10.10.10.254** with a Subnet Mask of **255.255.255.0**.please see the detail information as below:

2-1-1 Click '**Start**' button (it should be located at lower-left corner of your computer), then click **control panel**. Double-click **Network Connections**, then double-click **Local Area Connection**, Local Area Connection Status window will appear, and then click '**Properties**'



2-1-2 Set the IP address of your Ethernet adapter to a specific IP address.

In the **IP address** field, enter the address **10.10.10.x**(x should be replaced by a number between 2 and 253,such as 101).In the **Subnet Mask** field, enter **255.255.255.0**.



2-2 Gaming adapter setting

Enter <http://10.10.10.254> at web browser, default username and password is: admin.

2-2-1 Click 'Wireless setting→Site survey' to search AP or Router you want connect.

2-2-2 Click 'Add Profile→Apply', to save current connecting.

[open all](#) | [close all](#)

Station Site Survey

Site survey page shows information of APs nearby. You may choose one of these APs connecting or adding it to profile.

Site Survey	SSID	BSSID	RSSI	Channel	Encryption	Authentication	Network Type
<input checked="" type="radio"/>	WR3050	00-0C-43-30-50-48	20%	5	Not Use	OPEN	Infrastructure

Connected <--> WR3050

Connect Rescan **Add Profile**

SSID	WR3050
Network Type	Infrastructure
Power Saving Mode	<input checked="" type="radio"/> CAM (Constantly Awake Mode) <input type="radio"/> Power Saving Mode
RTS Threshold	<input type="checkbox"/> Used 2347
Fragment Threshold	<input type="checkbox"/> Used 2346

Security Policy	
Security Mode	OPEN

Wire Equivalence Protection (WEP)	
WEP Key Length	64 bit (10 hex digits / 5 ascii keys)
WEP Key Entry Method	Hexadecimal
WEP Keys	WEP Key 1 :
	WEP Key 2 : <input type="text"/>
	WEP Key 3 : <input type="text"/>
	WEP Key 4 : <input type="text"/>
Default Key	Key 1

Apply
Cancel

If the AP or Router you want to connect has security setting, you must input the password same as AP or Router's setting

2-2-3 Click Wireless Settings->Profile->Select your router->Activate to activate the router you want to connect, refer below:

[open all](#) | [close all](#)

Station Profile

Ralink

- Internet Settings
- Wireless Settings
 - Profile**
 - Link Status
 - Site Survey
 - Statistics
 - Advance
 - QoS
 - 11n Configurations
 - About
 - WPS
- Administration

The Status page shows the settings and current operation status of the Station.

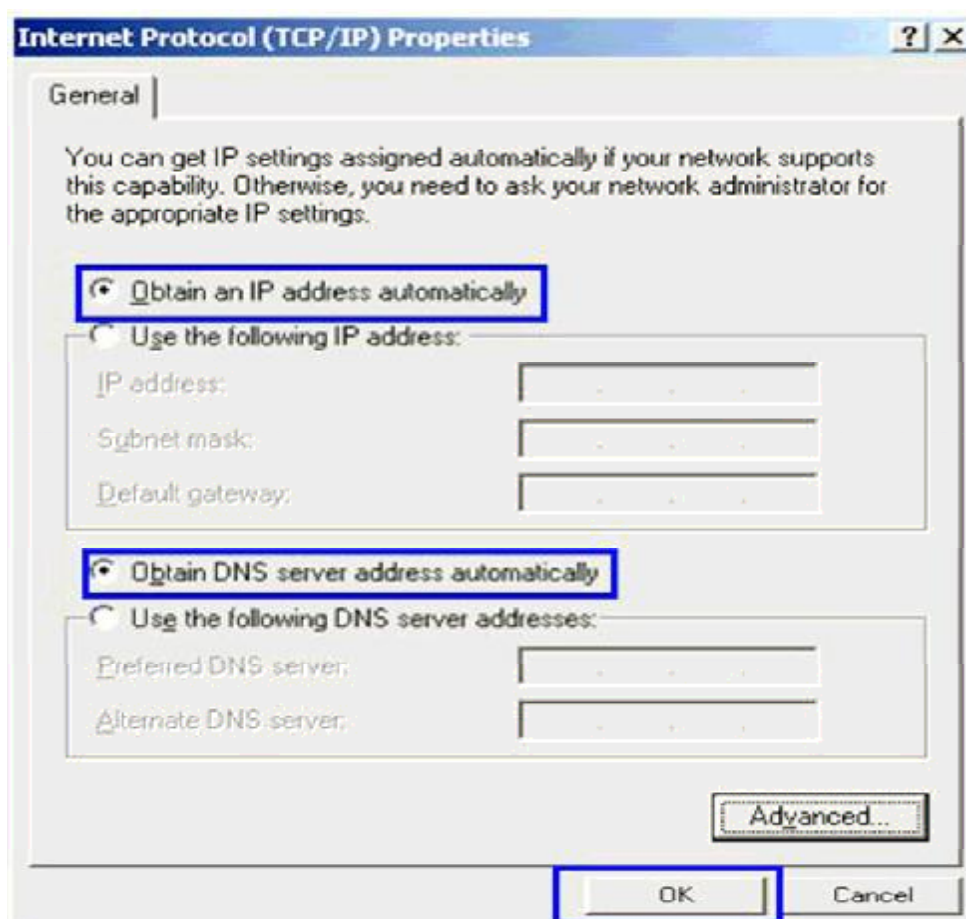
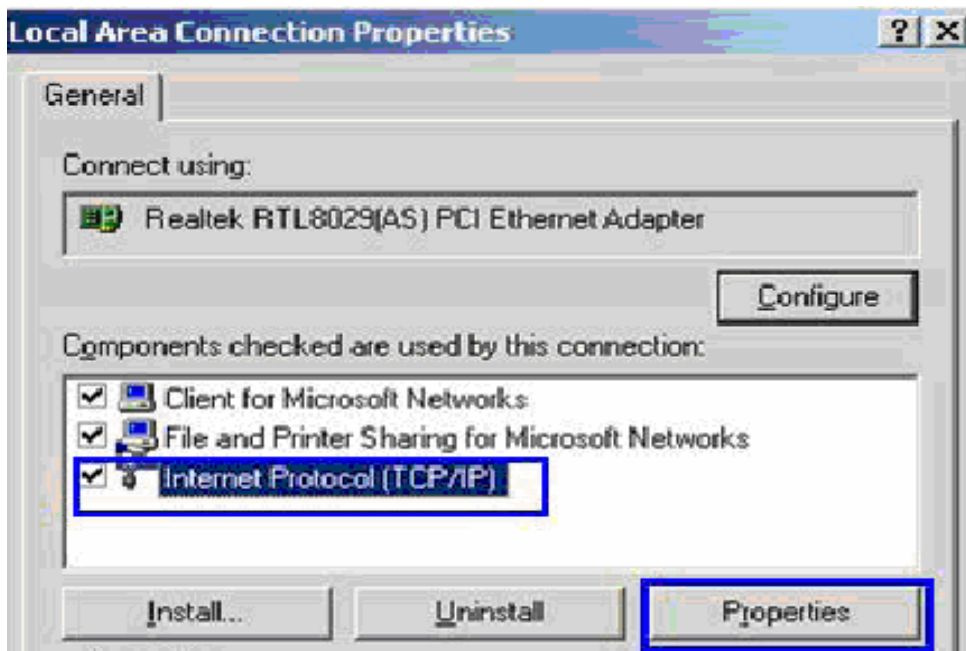
Profile List						
	Profile	SSID	Channel	Authentication	Encryption	Network Type
<input type="radio"/>	PROF001	WR3050	Auto	OPEN	NONE	Infrastructure
<input checked="" type="radio"/>	PROF002	RTL8186-GW	Auto	OPEN	NONE	Infrastructure
<input type="radio"/>	PROF001	QA	Auto	OPEN	NONE	Infrastructure

Add
Delete
Edit
Activate

Now, the gaming adapter has successfully connected to AP or Router which you want to connect. Then replace the setup computer with your gaming console. The gaming console will communicate with the AP

or Router.

If you want to use this gaming adapter connect to AP or Router for internet connection with computer, you must set this computer's Ethernet adapter into 'Obtain an IP address automatically' (refer below) so that it can obtain the IP address from AP or Router.



Led indicators



POWER(Yellow): A solid light indicates a proper connection to the power supply.

WLAN(Yellow): The LED is flickering during wireless activity.

LAN(Yellow): The Link/Act LED serves two purposes. If the LED is continuously illuminated, the Gaming Adapter is successfully connected to a device through the corresponding port. If the LED is flickering, the Gaming Adapter is actively sending or receiving data over that port.

WPS(Yellow): Only when the press the WPS button and 2 seconds later, the light will light up.

WPS SETUP

WPS is designed to ease set up of security Wi-Fi networks and subsequently network management. This Gaming Adapter supports WPS features for AP mode, AP+WDS mode and Infrastructure-Client mode.

WPS: Checking WPS box and clicking “OK” will disable WPS function. WPS is turned on by default.

WPS Status: When Gaming Adapter settings are factory default, it is set to open security and un-configured state, some registers such as Vista WCN can config AP. Otherwise If it already shows “Configured”, it means that the Gaming Adapter has setup its security.

Self-PIN Number: It is AP's PIN.

Start PBC: Clicking this button will invoke the Push Button Configuration of WPS. If one station wants to connect to the AP, it must click its PBC button in two minutes. You can see the reset LED flash this time.

Note: This Gaming Adapter also has a hardware button, When click this button less than two seconds, the Gaming Adapter will run PBC function and the reset LED flashes two minutes, during this time, the station can connect to the AP by its software or hardware WPS button.

Client PIN Number: The length of PIN is limited to four or eight numeric digits. If the AP and Station input the same PIN and click “Start PIN” button in two minutes, they will establish connection and setup their security key.

Changes or modifications not expressly approved by the party responsible for compliance could void the user's authority to operate the equipment

NOTE:THE MANUFACTURER IS NOT RESPONSIBLE FOR ANY RADIO OR TV INTERFERENCE CAUSED BY UNAUTHORIZED MODIFICATIONS TO THIS EQUIPMENT.SUCH MODIFICATIONS COULD VOID THE USER'S AUTHORITY TO OPERATE THE EQUIPMENT.

NOTE: This equipment has been tested and found to comply with the limits for a Class B digital device, pursuant to Part 15 of the FCC Rules. These limits are designed to provide reasonable protection against harmful interference in a residential installation. This equipment generates, uses and can radiate radio frequency energy and, if not installed and used in accordance with the instructions, may cause harmful interference to radio communications. However, there is no guarantee that interference will not occur in a particular installation. If this equipment does cause harmful interference to radio or television reception, which can be determined by turning the equipment off and on, the user is encouraged to try to correct the interference by one or more of the following measures:

- Reorient or relocate the receiving antenna.
- Increase the separation between the equipment and receiver.
- Connect the equipment into an outlet on a circuit different from that to which the receiver is connected.
- Consult the dealer or an experienced radio/TV technician for help.

This device complies with Part 15 of the FCC Rules. Operation is subject to the following two conditions: (1) this device may not cause harmful interference, and (2) this device must accept any interference received, including interference that may cause undesired operation.

This equipment complies with FCC RF radiation exposure limits set forth for an uncontrolled environment. This device and its antenna must not be co-located or operating in conjunction with any other antenna or transmitter.

“To comply with FCC RF exposure compliance requirements, this grant is applicable to only Mobile Configurations. The antennas used for this transmitter must be installed to provide a separation distance of at least 20 cm from all persons and must not be co-located or operating in conjunction with any other antenna or transmitter.”