

Size: 218x120mm

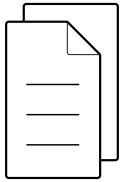
材质: 105g双铜, 双面四色印刷, 骑马钉, 20P

封面

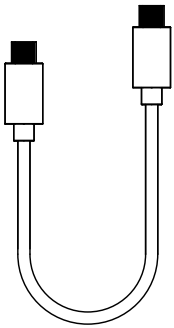




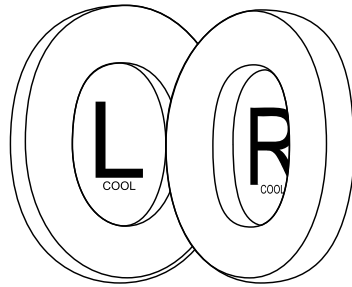
WHAT'S INSIDE



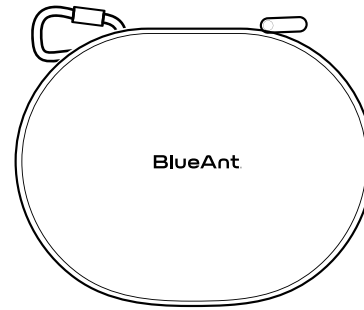
User
Manual



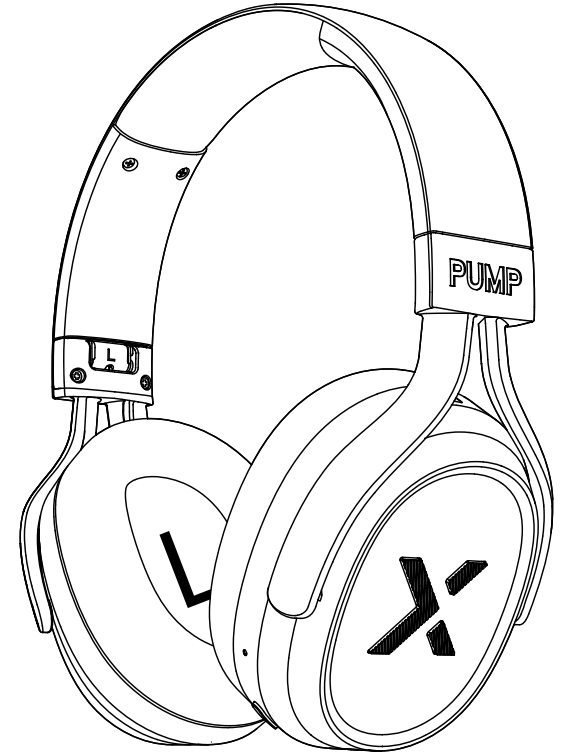
USB-C to USB-C cable
for charging and audio



Cooling gel ear pads



Carry Case



BlueAnt Pump X Headphones
(With everyday ear pads pre-installed)

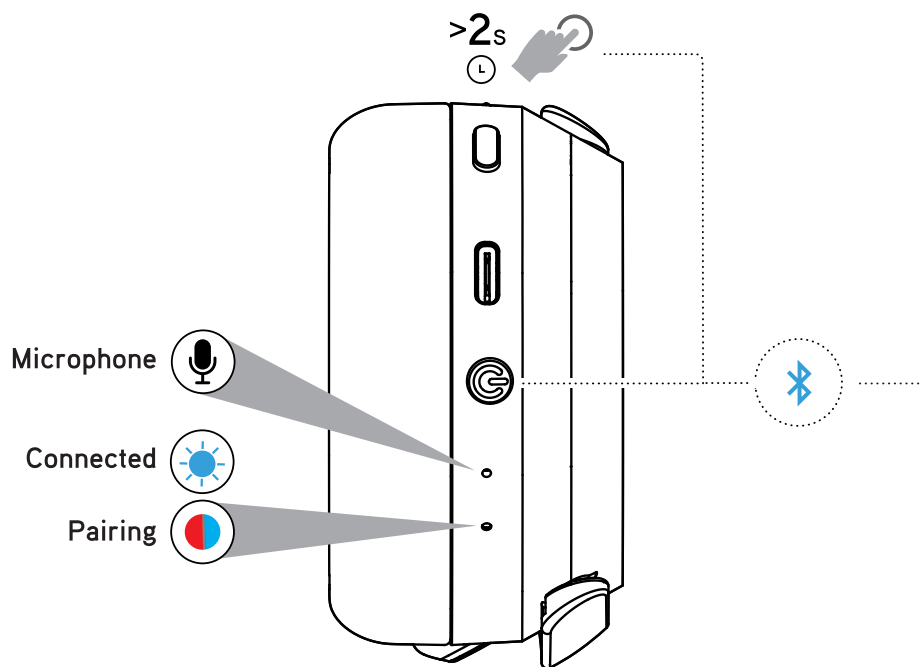
POWER ON & CONNECT

Power On/Off

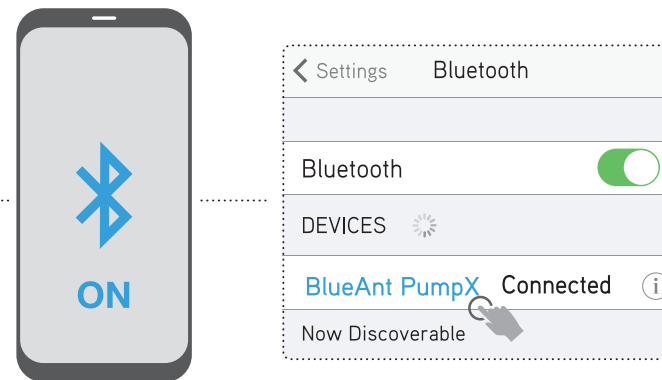
Press and *hold* the power button for 2s

Automatic Pairing

When you power on the Pump X, it will automatically enter pairing mode



Connect to your device

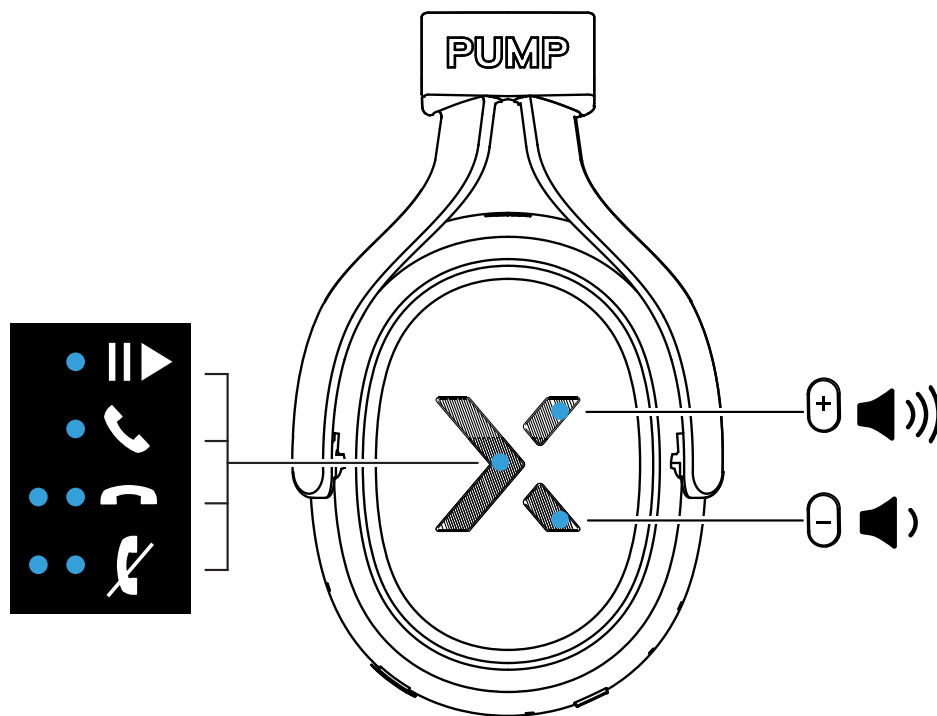


Choose 'BlueAnt PumpX' to connect

Re-enter Pairing Mode

If you need to enter pairing mode again, power off the Pump X, then *press & hold* the power button for 5s

CONTROLS



Play Music

Press *once* to toggle play/pause



Answer Call

Press *once* to *answer* an incoming call



End/Decline Call

Press *twice* to *end* the call or decline an incoming call



Change the Volume

UP: Click to *increase* volume or *press* and *hold* to increase rapidly.

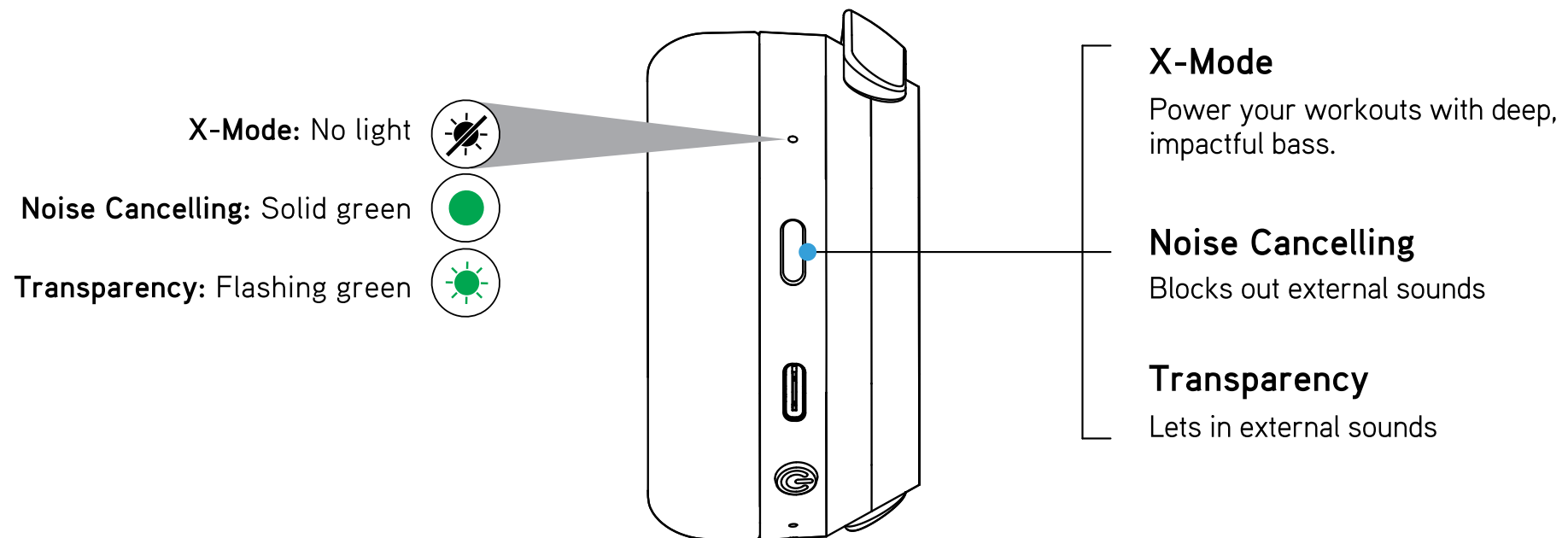


DOWN: Click to *decrease* volume or *press* and *hold* to decrease rapidly.

X-MODE: AMP UP YOUR HEARTBEAT

Boost output and enhances bass, delivering a high-energy audio experience for powering through tough workouts

Press *once* to switch between Noise Cancelling, Transparency and X-Mode!



N.B. In X-Mode, both Noise Cancelling and Transparency are OFF

INTERCHANGEABLE EAR PADS

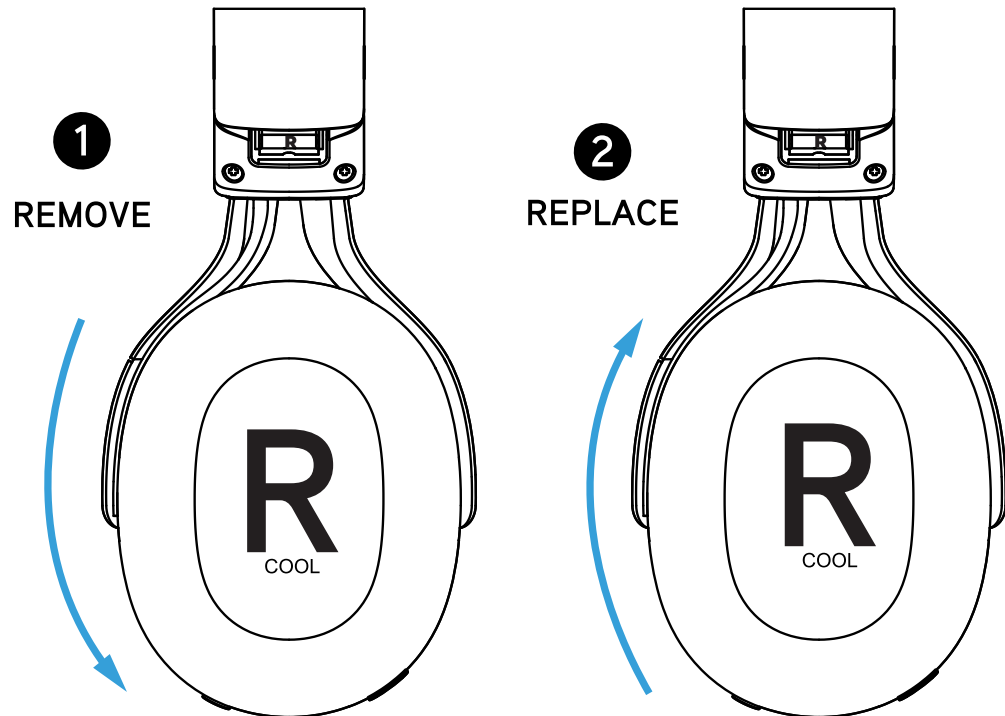
Remove the ear pads

- 1 To remove the ear pads, rotate to the left (counterclockwise) and gently pull them off the headphone once it's loose.

Replace the ear pads

- 2 To replace the ear pads, align with the attachment points on the Pump X, and place them in the same position, then rotate to the right (clockwise) to lock them in place.

The Pump X headphones come with two types of ear pads. The *everyday ear pads* (pre-installed) are designed for general use, while the *cooling gel ear pads* (included separately in the box) are ideal for intense gym sessions, reducing heat build-up and keeping your ears cool.



N.B. Replacement ear pads are available from our website



CLEANING & CARING FOR THE EAR PADS

CLEANING

- ❶ **Detaching for Easier Cleaning:** Carefully detach the ear pads from your Pump X, following the instructions on *Page 5*. This will make cleaning easier and prevent any damage to the Pump X.
- ❷ **Everyday Ear Pads:** Gently wipe the ear pads with a soft, dry cloth to remove sweat, dust, makeup, lotions, sunscreen, or hair products. For deeper cleaning, use a damp cloth with mild soap, then air dry completely before reattaching them to the headphones.
- ❸ **Cooling Gel Ear Pads:** After gym use, wipe the cooling gel ear pads with a dry cloth to remove any moisture. Avoid soaking or submerging them in water, and let them air dry completely before storing.
- ❹ **Disinfecting (optional):** For added cleanliness, you can lightly disinfect the ear pads by wiping them with an alcohol-based wipe, or a cloth dampened with a mixture of water and a small amount of rubbing alcohol (70% isopropyl alcohol). Be sure not to over-saturate the pads.
- ❺ **Makeup, Lotions, and Sunscreen Removal:** For both types of ear pads, if makeup, lotions, sunscreen, or hair products build up, gently clean the surface with a damp cloth and mild soap.

CARING

- ❶ **Drying:** Allow the ear pads to air dry completely before reattaching them to your Pump X. Avoid using heat sources like hair dryers, as high temperatures can damage the cooling gel. Additionally, avoid drying the ear pads in direct sunlight, as prolonged exposure to UV rays can degrade the materials and reduce the cooling effect.
- ❷ **Avoid Excessive Pressure:** When storing your Pump X, make sure not to place heavy objects on them, as this can deform the cooling gel or the memory foam inside the ear pads.
- ❸ **Avoid sharp objects:** Be cautious of sharp objects that could puncture or tear the ear pads, which would compromise both the cooling gel and the overall comfort.
- ❹ **Storage:** Store the cooling gel ear pads in a cool, dry place to maintain their cooling properties. Ensure they are fully dry before placing them back in the box or on the headphones.
- ❺ **Replacement:** Over time, cooling gel ear pads may lose their cooling effect or become worn out. Depending on usage, consider replacing them every 12-18 months to maintain comfort and performance. Scan the QR code on *Page 5* to order replacement ear pads.

CLEANING & CARING FOR YOUR PUMP X

IP54 Rating - Sweat and Splashproof

Your Pump X headphones are rated IP54, making them resistant to sweat and splashes, which is perfect for gym use and everyday activities. However, they are *not* waterproof, so avoid submerging them in water or running them under a tap. Always wipe them down after exposure to moisture, and store them in a dry place.

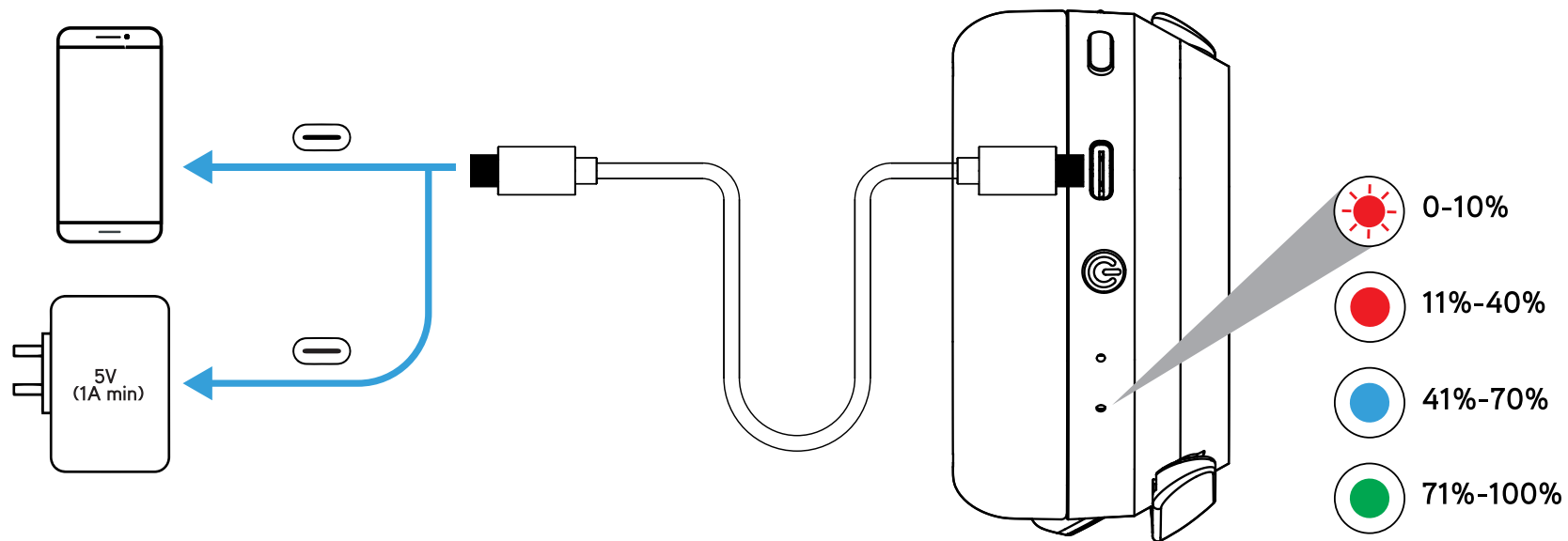
Cleaning and Caring for your Pump X

- **Surface Cleaning:** Use a soft, dry cloth to gently wipe down the Pump X. For a more thorough cleaning, use a slightly damp cloth, but avoid excessive moisture.
- **Avoid Liquids:** Do not submerge your Pump X in water or expose them to excessive moisture. Ensure they are kept away from direct heat and sunlight.
- **Makeup, Lotions, and Sunscreen Removal:** If makeup, lotions, sunscreen, or hair products transfer onto the Pump X during workouts, use a mild cleaning solution on a damp cloth to carefully clean the affected areas. Avoid using harsh chemicals that may damage the materials.
- **Storage:** Store your Pump X in a cool, dry place when not in use, preferably in the provided case or pouch to protect them from dust and scratches.
- **Wired Mode:** If you are using Pump X in wired mode with the included USB-C to USB-C cable, neatly wrap the cable after use to avoid tangling or damage.

CHARGING

To charge your Pump X, use the included USB-C cable and plug them into a power source.

When the Pump X is fully charged, all the lights will *turn off*.



N.B. Adapter not provided; a standard USB-C phone charger is fully compatible.

The headphones cannot be turned ON for Bluetooth mode while plugged into an adapter to charge. However, they will charge when in wired mode and plugged into a USB audio source (phone, tablet, laptop, etc.).

VOICE ASSISTANT/LOW LATENCY

➤ Voice Assistant

Press *twice* to toggle Siri/GOOGLE *On* or *Off*.

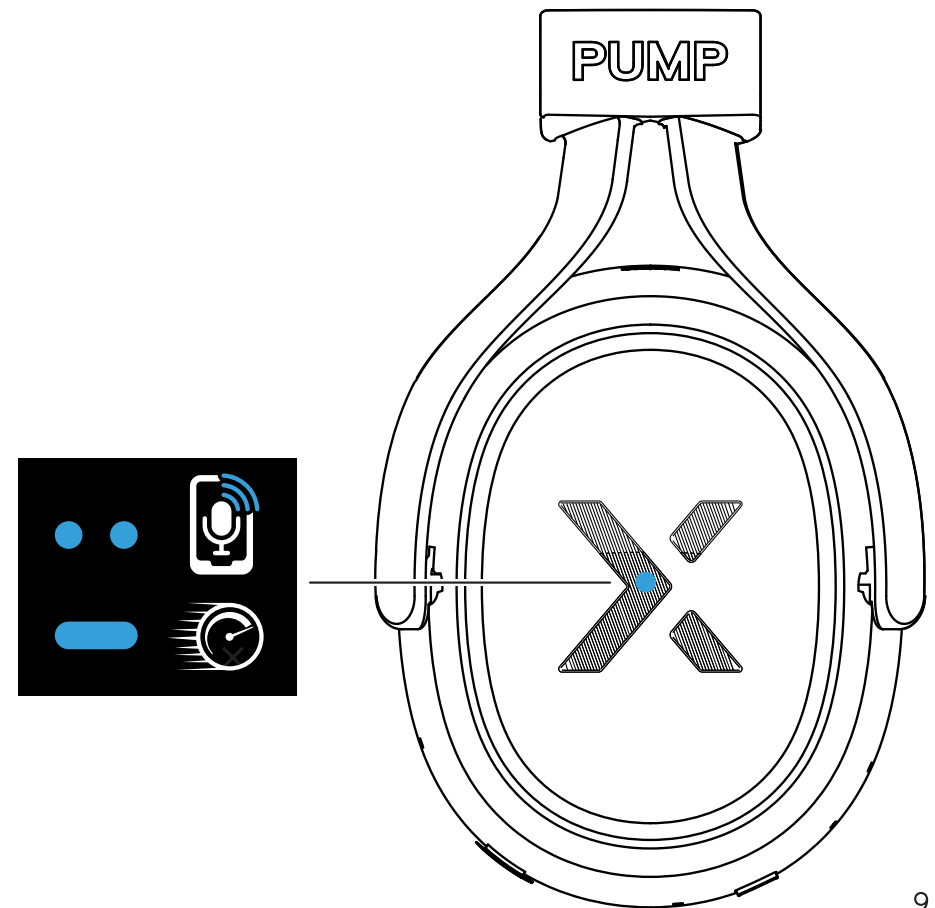
➤ Low Latency

Press and *hold* for 2s to toggle low latency mode, ensuring real-time audio sync while gaming or watching videos.

When low latency mode is *enabled*, you will hear a long beep. When *disabled*, there are two short beeps.

Low latency mode is only available for Bluetooth, as USB inherently offers low latency.

N.B. If you have any problems with audio stuttering, please disable low latency mode. Not all devices support this mode, particularly when using multi-point.



MULTI-POINT CONNECTION

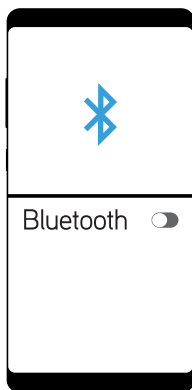
Multi-point connectivity allows the Pump X to connect with two devices simultaneously, so you can easily switch between them

How to use Multi-point Connectivity

1 Connect the first device

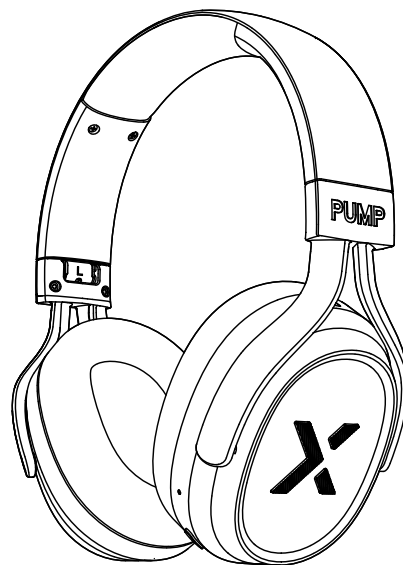
Pair your first device with the Pump X through Bluetooth. Once connected, turn off Bluetooth on the first device to allow the Pump X to enter pairing mode again.

FIRST
Device



2 Connect the second device

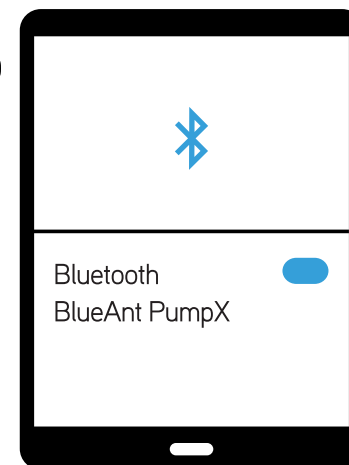
On your second device, enable Bluetooth and connect it to the Pump X.



3 Reconnect the first device

Go back to your first device's Bluetooth settings, turn Bluetooth back on, and reconnect to the Pump X. Your Pump X will now be connected to both devices simultaneously.

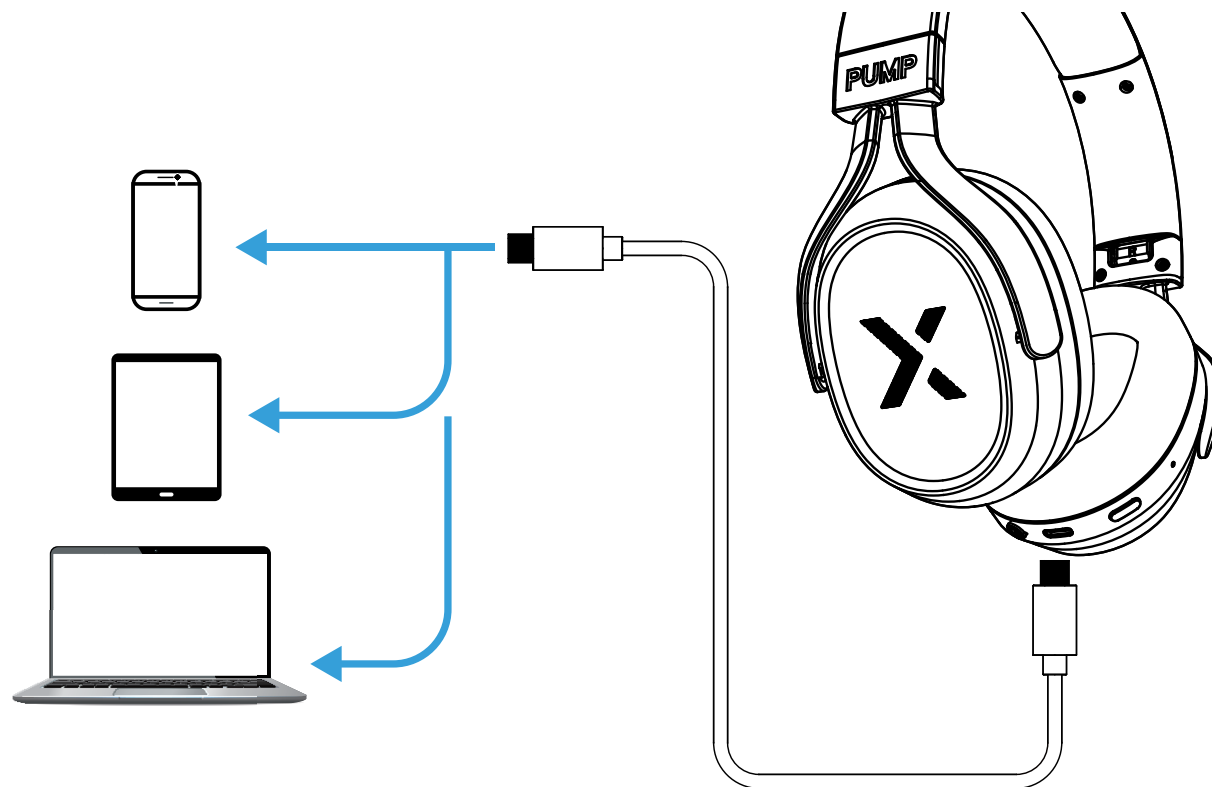
SECOND
Device



WIRED MODE FOR LOSSLESS AUDIO

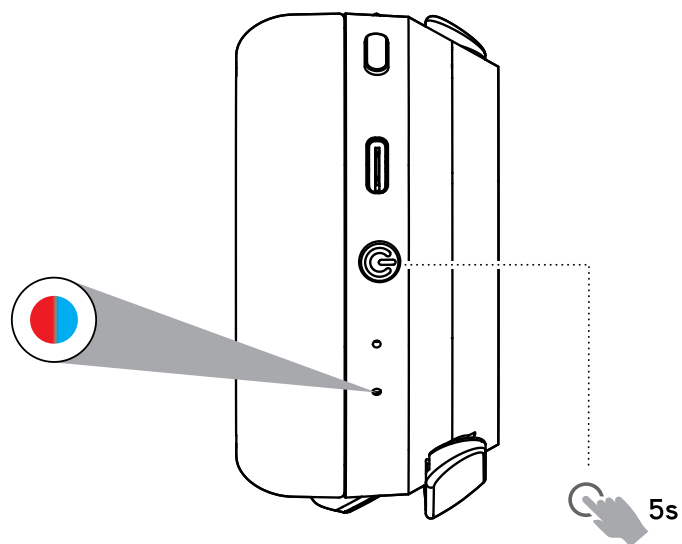
Seamless Connection for Superior Sound Quality

- You can use the included USB-C cable for lossless audio playback, if your source device supports USB Audio. The play and volume controls will work as normal.
- The voice assistant will not work when connected to USB for audio.
- The Pump X will automatically power off when the USB-C cable is unplugged.
- The ON/OFF button has no effect in USB mode.
- The Pump X will continue to charge while being used in wired USB mode.

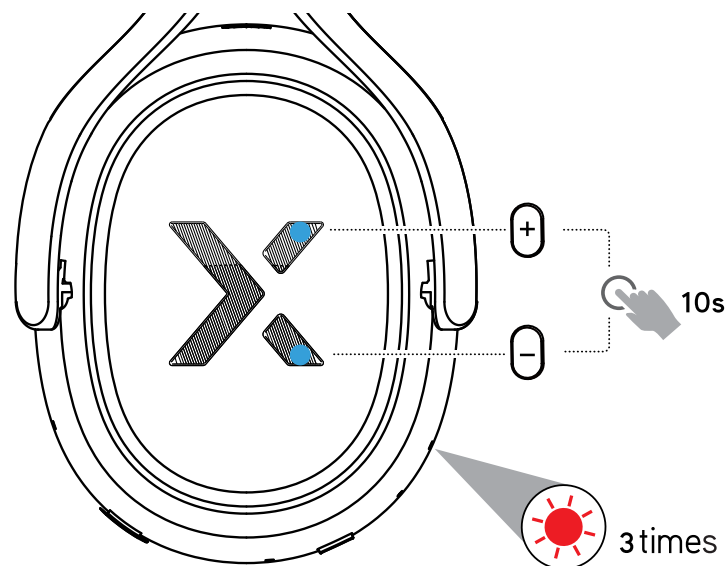


FACTORY RESET

Please delete the pairing information from your device before you Factory Reset your Pump X



- 1 When Power is off, *press* and *hold* the power button for 5s until the LED flashes **blue** and **red**.



- 2 Keep holding +/- buttons simultaneously for 10s until you see the **red/blue** LED change to solid **red** for 3times. The Pump X will power **OFF** automatically.

SAFETY INFORMATION AND WARRANTY TERMS

Important Safety Information

**PLEASE READ THIS ENTIRE DOCUMENT
CAREFULLY, BECAUSE IT CONTAINS
IMPORTANT INFORMATION ABOUT THE
SAFE USE OF BLUEANT DEVICES**

**PROLONGED USE AT HIGH
VOLUMES MAY AFFECT YOUR
HEARING CAPACITY AND MAY
RESULT IN NOISE INDUCED
HEARING LOSS (NIHL).
TURN OFF THE POWER TO
YOUR DEVICE WHEN NOT
IN USE.**

Please ensure that the device and any associated components such as ear gels or chargers, are stored safely and that any packaging or unwanted contents are disposed of thoughtfully. Do not place the product on the floor or leave it in a place, where young children could access it, or someone could trip over it

Care and Handling

Your BlueAnt Bluetooth device is a precision engineered instrument. To ensure its ongoing performance, you should look after it as you would any quality consumer electronic product, and use it in accordance with the instructions. BlueAnt recommends that you take the following precautions.

- Avoid leaving your device in direct sunlight, such as on the dashboard or console of a car or truck. Do not leave your device unattended in your vehicle.
- Do not leave your device, or use your device, in any area where the temperature may exceed 45 degrees Centigrade (113 Degrees Fahrenheit), such as inside a closed car on a hot day. Remember that on a hot day the temperature inside a closed car may be significantly higher than the outside air temperature.
- Do not leave your device, or use your device, in any area exposed to humidity, dust, soot, other foreign objects, smoke, or steam as this may cause your device to malfunction.

- Do not use any household or industrial grade detergents or cleaners to clean your device. If your device becomes dirty or smeared, in most instances, a wipe with a dry or slightly damp cloth should be sufficient to clean it.
- Do not leave your Bluetooth device, plugged into a wall or car charger for long periods after it is fully charged. BlueAnt does not recommend long periods of continued charging.
- Before charging your BlueAnt device, make sure that the AC outlet, adaptor and cable are not damaged. If you notice any abnormalities, seek advice from a qualified professional.
- If travelling internationally, ensure that your BlueAnt wall or car power adapter is approved for use in the country where you plan to use it and that the adapter voltage is suited to the local power supply.
- Should a fault develop with your BlueAnt product, contact BlueAnt for advice on how to proceed. Do not attempt to repair or alter any BlueAnt product yourself.

Approved Accessories

The use of accessories not approved by BlueAnt, including but not limited to batteries, antennas, wall adapters, car chargers, ear gels, foam tips and convertible covers, may cause your BlueAnt device to malfunction, or in the case of non-approved electrical accessories, may cause the device to exceed RF energy exposure guidelines. Use only 5V/1A chargers.

Use of non approved accessories will void your device's warranty. For a list of approved BlueAnt accessories, visit our website www.blueantwireless.com

Electromagnetic Interference

Nearly every electronic device is susceptible to electro-magnetic interference (EMI) if inadequately shielded, designed, or otherwise for electromagnetic compatibility.

Similar to a mobile phone, your BlueAnt device is a low power transmitter/receiver and is covered by regulations in any facility where posted notices instruct you to do so. These facilities may include hospitals or health care facilities that may be using equipment that is sensitive to external RF energy.

- When instructed to do so, turn off your BlueAnt device when you board an aircraft. Any use of a mobile device must be in accordance with applicable laws, regulations and airline crew instructions.
- Some Bluetooth devices may interfere with some hearing aids. In the event of such interference, you may want to consult your hearing aid manufacturer or physician to discuss alternatives.
- If you use any other personal medical device, consult the manufacturer of your device to determine if it is adequately shielded from RF energy. Your doctor or physician may be able to assist you in obtaining this information.
- If you are in doubt whether your BlueAnt device or mobile phone can be safely turned on or used, please consult an authorised person in the location you want to use your BlueAnt device. If no authorised person is available, or you remain uncertain, BlueAnt recommends that you turn off your Bluetooth device and any mobile phones unless they are required in an emergency situation.

**WARNING - PROTECT
YOUR HEARING**

**BLUEANT DEVICES CAN
REACH VOLUMES ABOVE
100 DECIBELS.**

**ONLY CHARGE
WHEN DEVICE IS
CLEAN AND DRY**

BlueAnt Limited Global Warranty

This product is covered by BlueAnt's limited global warranty for one (1) year from the date of purchase, or if later, the date of delivery.

Please refer to the **warranty.blueantwireless.com** for full terms and conditions.

Register your BlueAnt product for warranty and new product updates at **register.blueantwireless.com**

THANK YOU FOR CHOOSING A BLUEANT PRODUCT

Caring for the Environment by Recycling

Do not dispose of Bluetooth accessories, such as chargers or headsets, with your household waste. In some countries or regions, collection systems are set up to handle electrical and electronic waste items, and may prohibit or restrict how such items are disposed of. Check the laws and regulations for your areas to determine how to properly dispose of such items. Contact your regional authorities for more details.



AUSTRALIAN CONSUMER LAW

Our goods come with guarantees that cannot be excluded under the Australian Consumer Law. You are entitled to a replacement or refund for a major failure and compensation for any other reasonably foreseeable loss or damage. You are also entitled to have the goods repaired or replaced if goods fail to be of acceptable quality and the failure does not amount to a major failure.

For warranty and technical support, please email **care@blueantwireless.com** visit: **www.blueantwireless.com** or call 1300 669 049

BlueAnt Wireless
Suite 6, 861 Doncaster East,
VIC 3109, Australia



FCC INFORMATION (for US customers)

FCC ID: VHF-BLUEANT-PX

Warning

To assure continued compliance, any changes or modifications not expressly approved by the party. Responsible for compliance could void the user's authority to operate this equipment.

FCC Statement

This equipment complies with Part 15 of the FCC Rules. Operation is subject to the following two conditions:

- (1) This device may not cause harmful interference, and
- (2) This device must accept any interference received, including interference that may cause undesired operation.



WARNING:

This product can expose you to chemicals including lead, which is known to the State of California to cause cancer. For more information go to: www.P65Warnings.ca.gov

NOTE: This equipment has been tested and found to comply with the limits for a Class B digital device, pursuant to part 15 of the FCC rules. These limits are designed to provide reasonable protection against harmful interference in a residential installation. This equipment generates, uses and can radiate radio frequency energy and, if not installed and used in accordance with the instructions, may cause harmful interference to radio communications. However, there is no guarantee that interference will not occur in a particular installation. If this equipment does cause harmful interference to radio or television reception, which can be determined by turning the equipment off and on, the user is encouraged to try to correct the interference by one or more of the following measures:

- Reorient or relocate the receiving antenna.
- Increase the separation between the equipment and receiver.
- Connect the equipment into an outlet on a circuit different from that to which the receiver is connected.
- Consult the dealer or an experienced radio/TV technician for help.

FCC Radiation Exposure Statement:

The device has been evaluated to meet general RF exposure requirement.

The device can be used in the portable exposure condition without restriction.

PUMP X INFORMATION

REPLACEMENT EAR PADS

Scan me to
purchase
replacement
ear pads



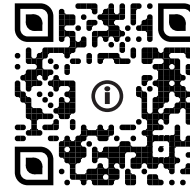
PRODUCT REGISTRATION

Scan me to
register and
extend your
Pump X warranty
from 1 to 2 years



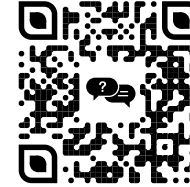
ONLINE MANUAL

Scan me to view
the Pump X user
manual online



FAQ's

Scan me to
view the
Pump X FAQ's



BlueAnt®

100% AUSTRALIAN
DESIGNED & OWNED



REGISTER & SCAN TO EXTEND YOUR WARRANTY

Register your BlueAnt product for warranty and new product updates by scanning the QR Code.

HELP & SUPPORT

Visit support.blueantwireless.com
Email: care@blueantwireless.com
Or Call: 1300 669 049



blueantwireless.com

封底