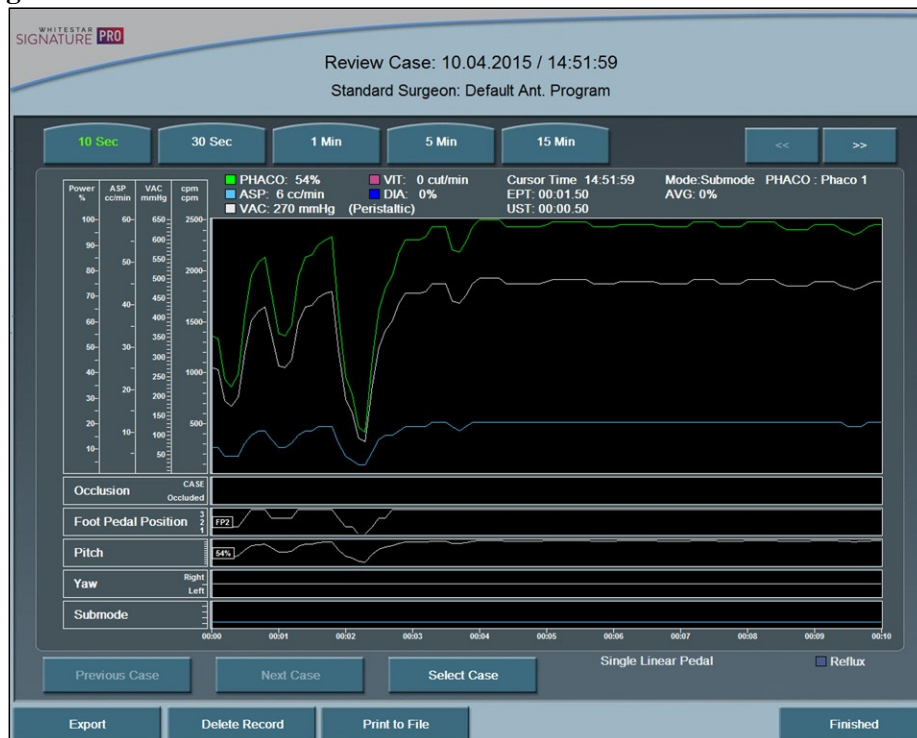


## Review Case

**Figure 3.20 – Review Case Screen**



**Review Case** – shows the graphical history of the surgery. (Refer to Figure 3.20 – Review Case Screen.)

1. Select a shorter time interval to adjust the time line duration and to see greater case details. For example, 10 Sec shows more detail than 15 Min.
2. Select a longer time interval for an overview of the surgery or sessions, such as 1 hour or 2 hours. This view provides less detail, but gives you a better indication of the trends over time. Use the << or >> buttons to shift the section being displayed.
3. Press the **Select Case** to select and view a specific surgical case.
4. Press **Export** to name and save the record to a USB device. Enter a name for the **Case History**.
5. Use the **Print to File** to save the data to a file format.
6. Use the **Delete Record** button to remove a case from the **Record** database.
7. Select **Finished** to close the screen.



# 4

## SURGEON SETTINGS

---

Select Surgeon

---

Add a New Surgeon

---

Delete Surgeon

---

Edit a Surgeon

---

Foot Pedal Setup

---

Set Sound Levels

---

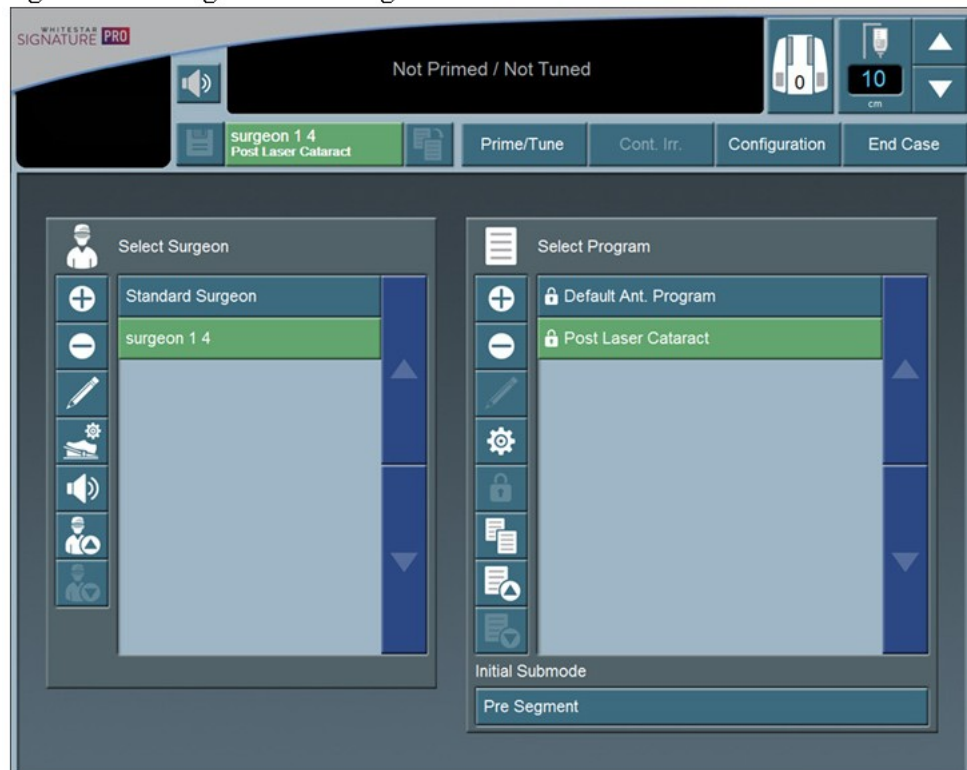
Surgeon – Assign Order

---

When you use the system for the first time, Standard Surgeon is the only surgeon on the system.


## Select Surgeon

**Figure 4.1 – Surgeons and Programs Screen**



## Add a New Surgeon

To create a new surgeon:


1. Press  on Select Surgeon.
2. The keyboard screen opens.
3. Enter the name of the surgeon.
4. Press **Enter** to save the new surgeon and then exit the keyboard screen. The new surgeon is now on the list of available surgeons.

**Figure 4.2 – Keyboard Screen**



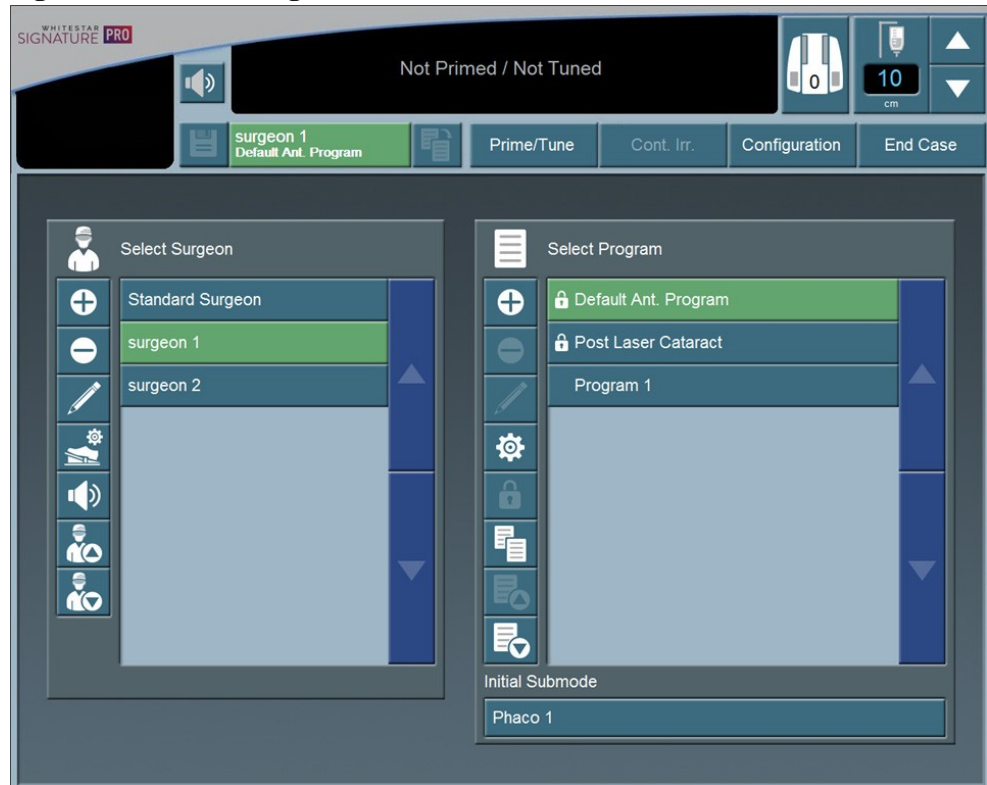
## Delete Surgeon

To remove a surgeon name from the list:

1. Select the name of the surgeon.
2. Press  on Select Surgeon.
3. At the confirmation dialog box, select **Yes**.

**Edit a Surgeon**

1. Select a surgeon from the list.

**Figure 4.3 – Select Surgeon**

2. Press  on Select Surgeon.
3. The keyboard screen appears.

**Figure 4.4 – Edit Surgeon Name Screen**

Edit Surgeon Name

surgeon 2\_

1 2 3 4 5 6 7 8 9 0 Backspace

Q W E R T Y U I O P

A S D F G H J K L '

Z X C V B N M . - \_

Shift Space Clear

Enter Cancel

4. Edit the name.
5. Press **Enter**.

## Foot Pedal Setup

This section presents the setup, calibration, and testing process for your foot pedal, divided into three sections:

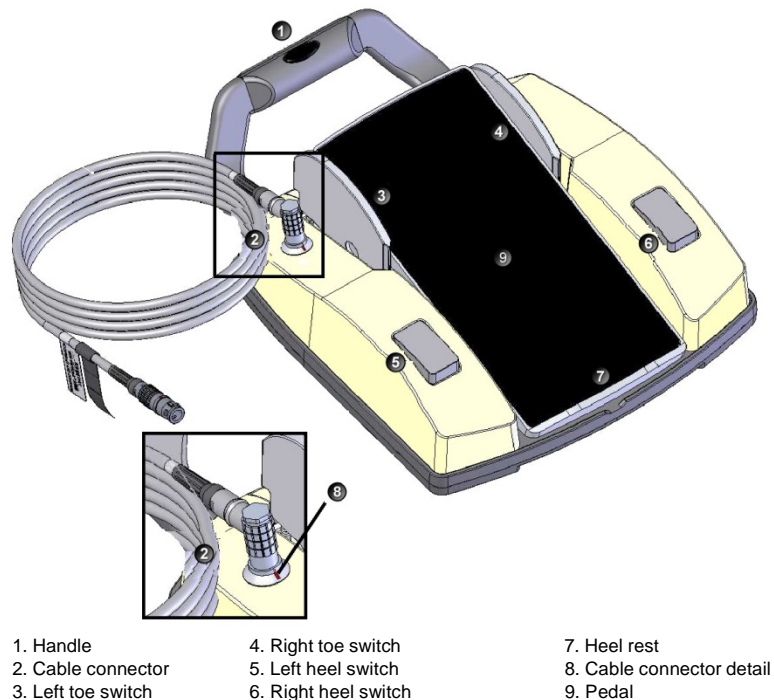
- Single Linear Foot Pedal
- Advanced Control Pedal
- Advanced Linear Pedal

### Single Linear Foot Pedal Setup

This section presents the following topics for setting up a standard foot pedal.

- Single Linear Foot Pedal Connections
- Single Linear Foot Pedal Switch Assignment
- Single Linear Foot Pedal Threshold Configuration
- Single Linear Foot Pedal Calibration and Testing

**Figure 4.5 – Single Linear Foot Pedal**





**Table 4.1 – Single Linear Foot Pedal Default Settings**

Parameter	Available Settings	Default Settings
Pitch regions	1–100%	P1=5% P2=30% P3=60%
Switch position	Switch1= * Switch 2= *	Switch1=Off Switch 2=Off
	Right= * Left= *	Right=Reflux Left=Off
Feedback	On, Off	Off

\*Table 4.3 – Single Linear Foot Pedal Switch Assignments

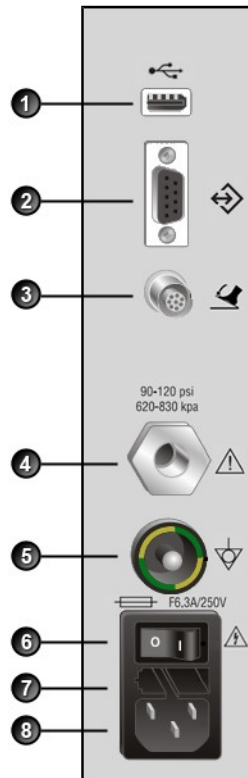
### **Vitrectomy Foot Pedal Modes**

**Table 4.2 – Vitrectomy Single Linear Foot Pedal Modes**

Foot Pedal Positions	Vitrectomy Foot Pedal Modes		
	ICA	IAC	Side VIT
1	Irrigation	Irrigation	Irrigation
2	Irrigation/Cut	Irrigation/ Aspiration	Irrigation/ Aspiration
3	Irrigation/Cut/ Aspiration	Irrigation/ Aspiration/Cut	Irrigation/ Aspiration

**Single Linear Foot Pedal Connections**

Attach the foot pedal cable to the connector on the left side of the foot pedal and attach the other end of the cable to the foot pedal connector on the rear panel of the system.

**Figure 4.6 – Rear Panel Connections**

- 1. USB port
- 2. Communication port
- 3. Foot pedal connector

- 4. Compressed air
- 5. Potential equalizer
- 6. Power switch


- 7. Fuse holder
- 8. Power cord connector
- 9. Pedal

### Single Linear Foot Pedal Switch Assignment

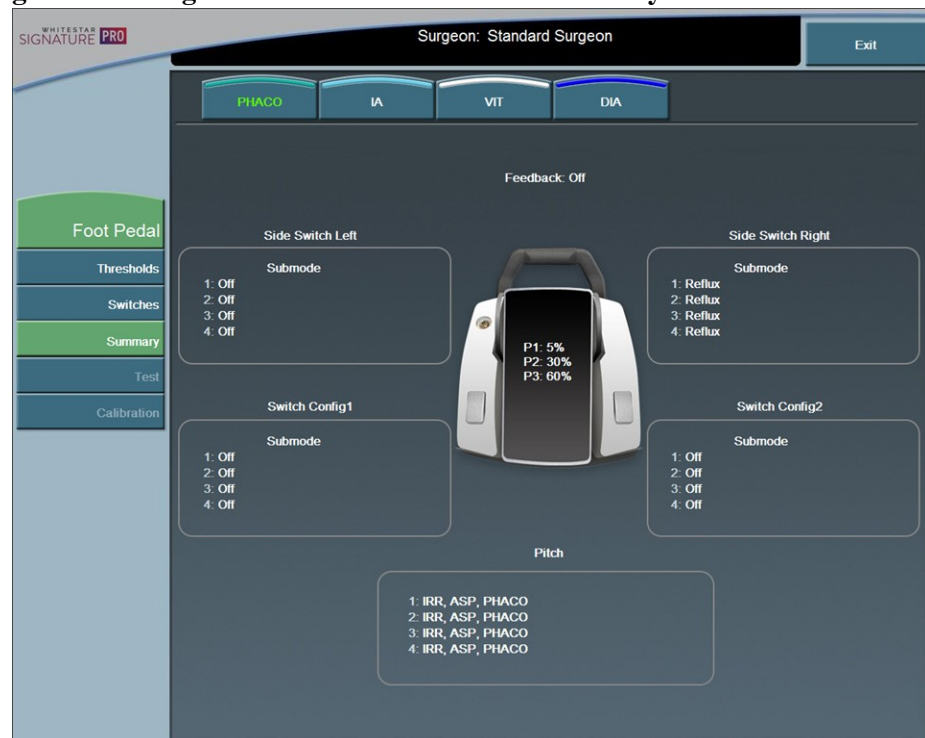
The standard foot pedal has four switches that you can assign specific functions for each surgeon. For Phaco and Vitrectomy foot pedal settings the switches are set per submode. Follow these steps to assign functions to the foot pedal switches.

**Note:** In addition to the procedure below, you can access the Single Linear Foot Pedal Summary screen by pressing the foot pedal symbol near the top of the screen.

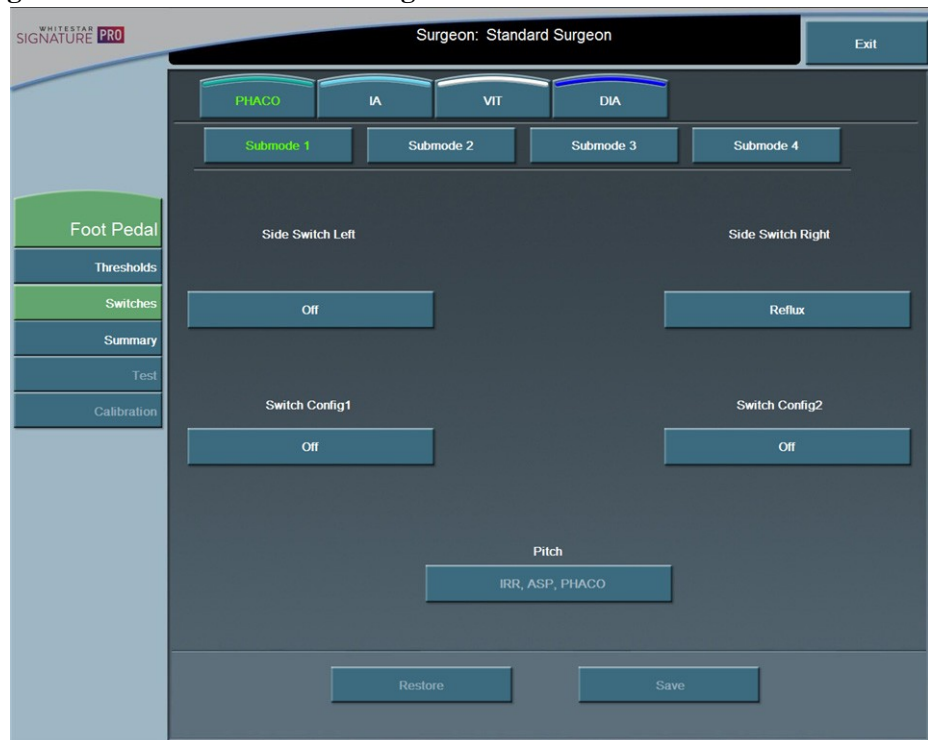


1. On the Surgeons and Programs screen, select a surgeon.
2. Press .
3. The system displays the **Summary** information on the foot pedal screen. Each surgical mode has individual settings for the foot pedal switches. The Single Linear foot pedal screen displays the settings for the pedal linear motion (Pitch) and each of the four switches. For purposes of this example, we will discuss configuring the switches for phaco.

**Figure 4.7 – Single Linear Foot Pedal Phaco Summary Screen**



4. Press the **Summary** button.

**Figure 4.8 – Switches Screen - Single Linear Foot Pedal**

5. Press the **Switches** button to change the settings for the switches. The system displays the standard foot pedal switch assignment screen. The Single Linear foot pedal Switches screen allows you to assign or change the action for each of the four switches.
6. Select the major mode and then the applicable submode.
7. Press the buttons under each switch name to assign or change the action for that switch. The system displays a switch assignment dialog box with the text of the current switch assignment shown in green.

**Note:** If you select Next Major Mode, Previous Major Mode, Next Active Mode or Previous Active Mode as a foot pedal switch setting, the Vitrectomy mode cannot be selected as you cycle through the different modes and submodes.

**Figure 4.9 – Single Linear Foot Pedal Switch Assignment Dialog Box**

8. Press the button that represents your choice of switch setting.

**Table 4.3 – Single Linear Foot Pedal Switch Assignments**

Switch Setting	Description
<b>Off</b>	This switch has no switch assignment.
<b>Surgeon Program Up</b>	Selects the surgeon program above the current program in the list.
<b>Surgeon Program Down</b>	Selects the surgeon program below the current program in the list.
<b>Previous Major Mode</b>	Changes to the previous surgical mode.
<b>Next Major Mode</b>	Changes to the next surgical mode.
<b>Previous Active Mode</b>	Changes to the previous active mode.
<b>Next Active Mode</b>	Changes to the next active mode.

Switch Setting	Description
<b>Previous Sub Mode</b>	Changes to the previous submode.
<b>Next Sub Mode</b>	Changes to the next submode.
<b>Toggle SMC Record</b>	Activates or deactivates the surgical media center (SMC) recording function.
<b>Bottle Up</b>	Raises the IV pole while the switch is held down.
<b>Bottle Down</b>	Lowers the IV pole while the switch is held down.
<b>Reflux</b>	Activates or deactivates reflux.
<b>Continuous Irrigation</b>	Activates or deactivates continuous irrigation.
<b>1-Touch Up</b>	Increments CASE mode 1-Touch (phaco only).
<b>1-Touch Down</b>	Decrements CASE mode 1-Touch (phaco only).
<b>Toggle CASE</b>	Activates or deactivate CASE mode (phaco only).


9. Press the **Finished** button to:
  - accept your choice of switch assignment
  - close the Switch Assignment dialog box
  - return to the edit screen

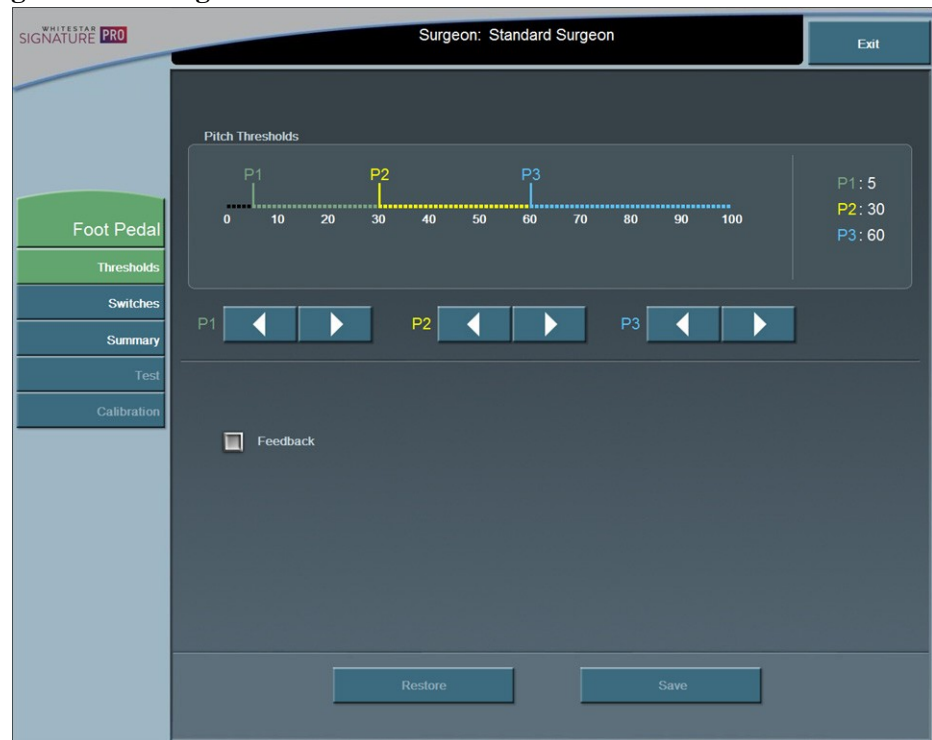
Repeat the process for all switches.

10. Press **Save** to retain the settings.
11. Press the **Exit** tab to close the Foot Pedal Set Up screen.

### Single Linear Foot Pedal Threshold Configuration

Follow these steps to configure the thresholds for the foot pedal.


1. On the Surgeons and Programs screen, press .
2. Select the **Thresholds** button.
3. Use the arrow buttons to set the threshold for position 1, 2, or 3. The system announces the current value.

**Figure 4.10 – Single Linear Foot Pedal Thresholds**

4. Select the **Feedback** box to enable foot pedal feedback. Feedback is a physical and audible click as you move the foot pedal to the next or previous position.
5. Press **Save** to retain the settings.

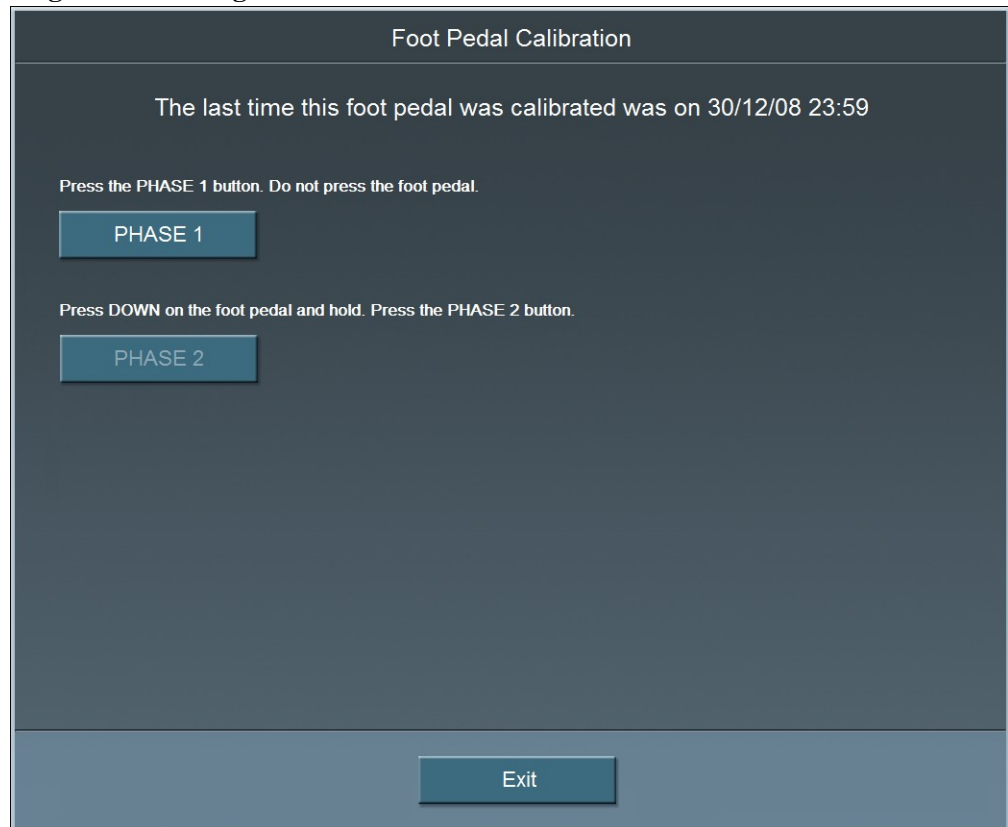
### Single Linear Foot Pedal Calibration and Testing

Follow these steps to calibrate and test your foot pedal.

1. On the Surgeons and Programs screen, press .
2. Select the **Calibration** button.

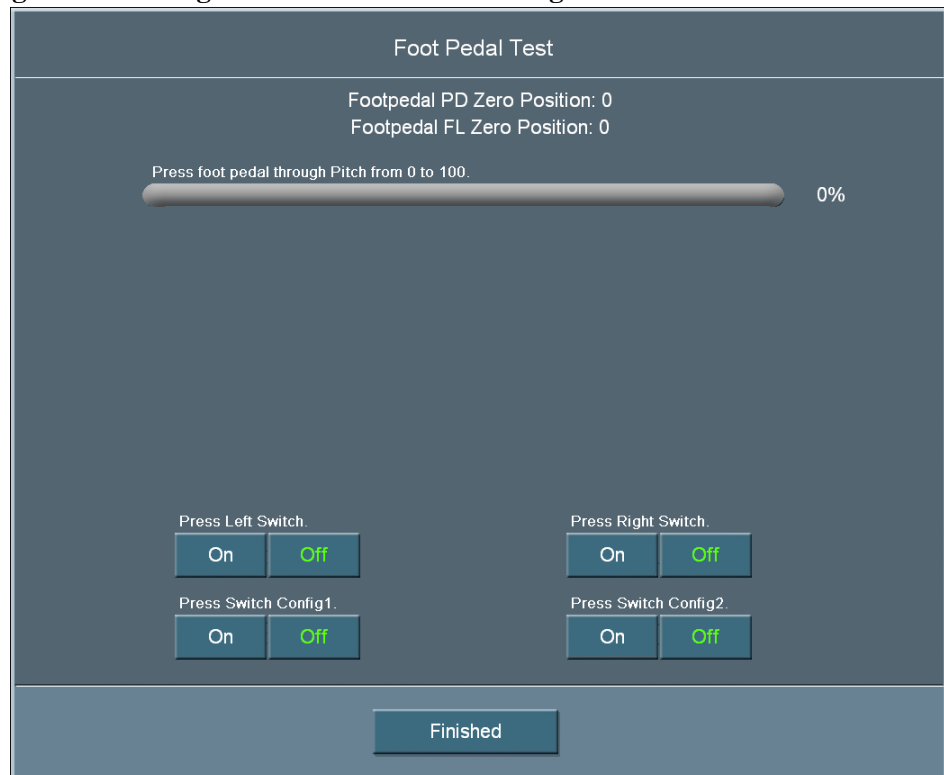
Note: The **Calibration** feature is not available during surgery.

**Figure 4.11 – Single Linear Foot Pedal Calibration Screen**



3. With your foot off the foot pedal, press the **Phase 1** button.
4. Put your foot on the foot pedal, press and hold the foot pedal all the way down and press the **Phase 2** button.
5. The system automatically displays the Foot Pedal Test screen.
6. Press the foot pedal down fully to position 3. As the foot pedal travels through positions 1 and 2 to position 3, the progress bar shows its current state. When the pedal reaches the bottom of position 3, the progress bar should be solid green.
7. Press each of the four switches. When you press a switch, the **On** button for that switch turns green and its **Off** button turns white. When you release the switch, the **On** button for that switch turns white and its **Off** button turns green.
8. Press the **Finished** button when you have completed testing the foot switches.



**Figure 4.12 – Single Linear Foot Pedal Testing Screen**

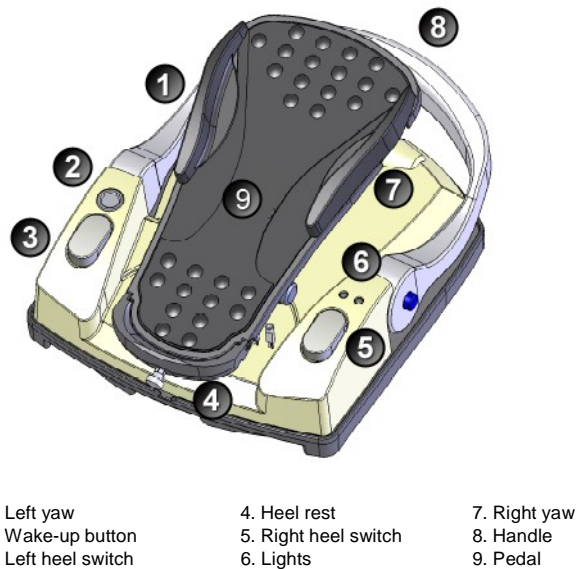
9. To test the foot pedal before calibration, press the **Test** button. The **Test** button is not available during surgery.

### Advanced Control Pedal Setup

This section presents the following topics for setting up an Advanced Control Pedal (ACP):

- Advanced Control Pedal Connections
- Advanced Control Pedal Switch Assignment
- Advanced Control Pedal Threshold Configuration
- Advanced Control Pedal Calibration and Testing

**Figure 4.13 – Advanced Control Pedal**



Note: See “Charging Options for Wireless Devices” on page 8-5.

**Table 4.4 – Advanced Control Pedal Default Settings**

Parameter	Available Settings	Default Settings
Right/Left Yaw	*	Right Yaw=Reflux
Pitch Region	1-100%	P1=5% P2=30% P3=60%
Yaw Position	5-100%	Left=90%
		Right=90%

\* Table 4.6 – Advanced Control Pedal Switch Assignments

## Vitrectomy Foot Pedal Modes

**Table 4.5 – Vitrectomy Advanced Control Pedal Modes**

Foot Pedal Positions	Vitrectomy Foot Pedal Modes		
	ICA	IAC	Side VIT
1	Irrigation	Irrigation	N/A
2	Irrigation/Cut	Irrigation/ Aspiration	N/A
3	Aspiration	Cut	N/A

### Advanced Control Pedal Connections

You can attach the Advanced Control Pedal to the system either with a cable or with a wireless BLUETOOTH connection.

To use the “Wired” connect the foot pedal cable to the connector on the top left side of the foot pedal and attach the other end of the cable to the foot pedal connector on the rear panel of the system. To use the foot pedal wireless refer to Figure 6.7 – Advanced Control Pedal Pairing Screen.

### Advanced Control Pedal Switch Assignment

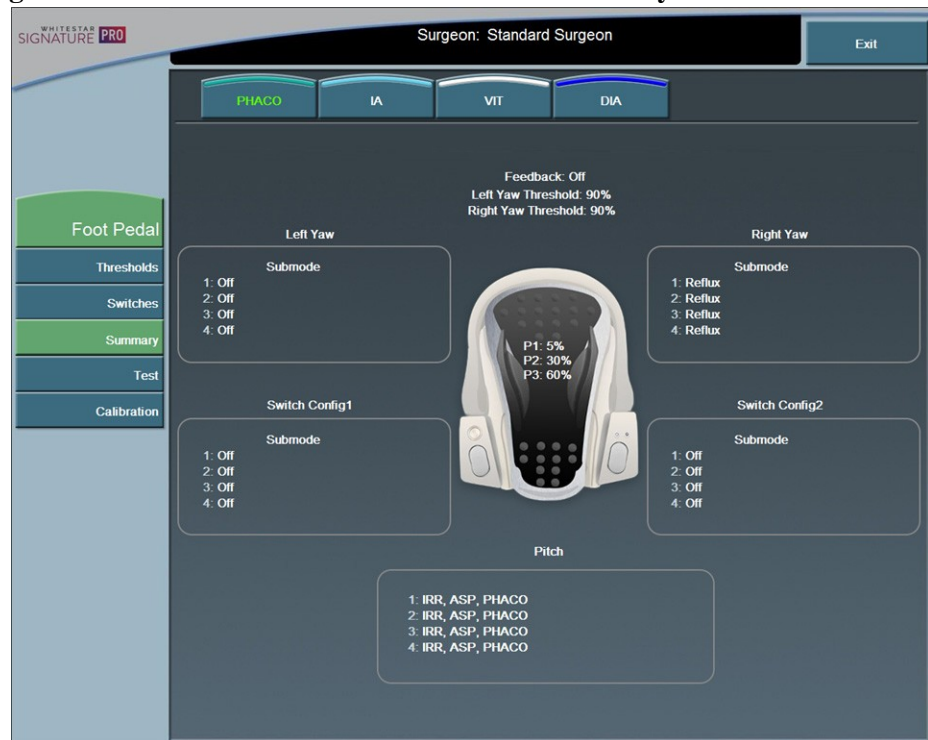
The Advanced Control Pedal has four switches that you can assign specific functions to. Follow these steps to assign functions to the foot pedal switches.

**Note:** In addition to the procedure below, you can access the Advanced Control Pedal Summary screen by pressing the foot pedal symbol near the top of the screen.

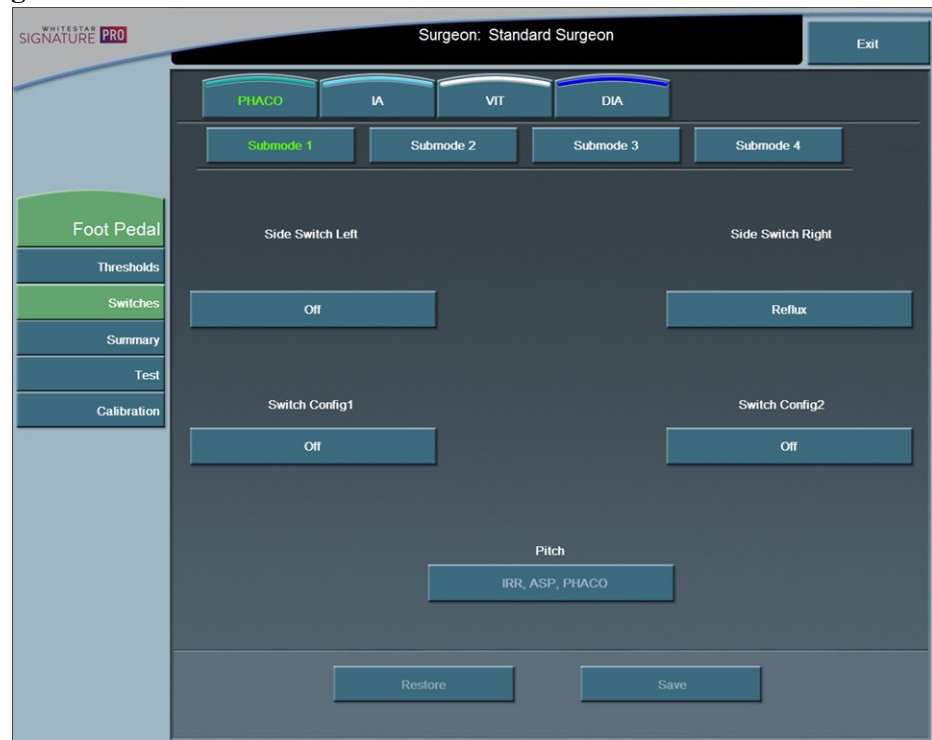


1. On the Surgeons and Programs screen, press .
2. The system displays the **Summary** screen.

**Note:** Both phaco and vitrectomy submodes have individual settings for the foot pedal switches. For purposes of this example, we will discuss configuring the switches for phaco.

**Figure 4.14 – Advanced Control Pedal Phaco Summary Screen**

3. Press the **Switches** button to change the settings for the switches. The system displays the Advanced Control Pedal edit screen. The Advanced Control Pedal edit screen allows you to assign or change the action for each of the four switches.

**Figure 4.15 – Advanced Control Pedal Phaco Switches Screen**

4. Select the major mode and then the applicable submode.
5. Press the button under each switch name to assign or change the action for that switch. The system displays a switch assignment dialog box with the text of the current switch assignment shown in green.

**Note:** If you select Next Major Mode, Previous Major Mode, Next Active Mode or Previous Active Mode as a foot pedal switch setting, the Vitrectomy mode cannot be selected as you cycle through the different modes and submodes.

**Figure 4.16 – Advanced Control Pedal Switch Assignment Dialog Box**

6. Press the button that represents your choice of switch setting.

**Table 4.6 – Advanced Control Pedal Switch Assignments**

Switch Setting	Description
<b>Off</b>	This switch has no switch assignment.
<b>Surgeon Program Up</b>	Selects the surgeon program above the current program in the list.
<b>Surgeon Program Down</b>	Selects the surgeon program below the current program in the list.
<b>Previous Major Mode</b>	Changes to the previous surgical mode.
<b>Next Major Mode</b>	Changes to the next surgical mode.
<b>Previous Active Mode</b>	Changes to the previous active mode.
<b>Next Active Mode</b>	Changes to the next active mode.
<b>Previous Sub Mode</b>	Changes to the previous submode.
<b>Next Sub Mode</b>	Changes to the next submode.
<b>Toggle SMC Record</b>	Activates or deactivates the surgical media center (SMC) recording function.

Switch Setting	Description
<b>Bottle Up</b>	Raises the IV pole while the switch is held down.
<b>Bottle Down</b>	Lowest the IV pole while the switch is held down.
<b>Reflux</b>	Activates or deactivates reflux.
<b>Continuous Irrigation</b>	Activates or deactivates continuous irrigation.
<b>1-Touch Up</b>	Increments CASE mode 1-Touch. (Phaco only)
<b>1-Touch Down</b>	Decrements CASE mode 1-Touch. (Phaco only)
<b>Toggle CASE</b>	Activates or deactivates CASE MODE (Phaco only)
<i>WhiteStar Increment</i>	Increment the <b>WHITESTAR</b> setting
<i>WhiteStar Decrement</i>	Decrement the <b>WHITESTAR</b> setting
<i>Vacuum Boost</i>	Activates or deactivates vacuum boost.
<i>Power Boost</i>	Activates or deactivates power boost
<i>ASP + VAC</i>	Activates or deactivates aspiration plus vacuum.
<i>Phaco</i>	Activates phaco surgical mode.

Note: The items in italics in Table 4.6 – Advanced Control Pedal Switch Assignments are only displayed when you assign functions to the left and right yaw switches.

7. Press the **Finished** button to:
  - accept your choice of switch assignment
  - close the Switch Assignment dialog box
  - return to the edit screen

Repeat the process for all switches.


8. Press the **Save** button to retain the switch assignments.
9. Press **Exit** to close the Foot Pedal Set Up screen.

### Advanced Control Pedal Threshold Configuration

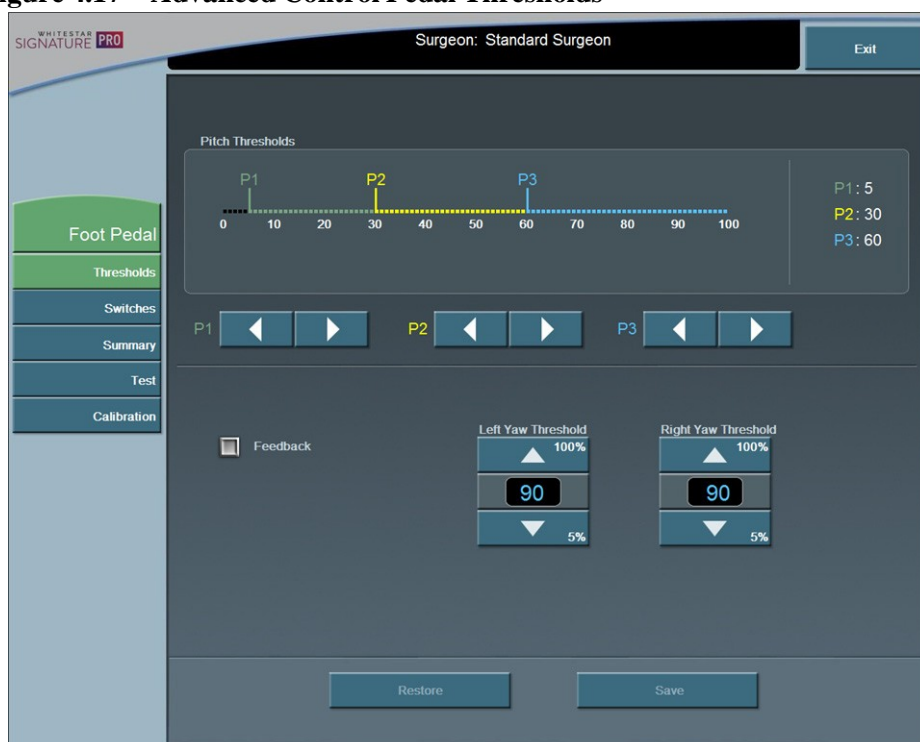
Follow these steps to configure the thresholds for the foot pedal.

Note: In addition to the procedure below, you can access the Advanced Control Pedal Summary screen by pressing the foot pedal symbol near the top of the screen.



1. On the Surgeons and Programs screen, press .
2. Press the **Thresholds** button under Foot Pedal. The system displays the foot pedal thresholds screen.

**Figure 4.17 – Advanced Control Pedal Thresholds**



3. Use the **right** and **left** arrows to set the threshold for position 1, 2, or 3. The system announces the current value.
4. Use the **up** and **down** arrows to set the threshold for the left and right yaw controls. The threshold determines how far the user needs to move the pedal before the switch is activated.
5. Select **Feedback** to enable foot pedal feedback. Feedback is a physical and audible click as you move the foot pedal to the next or previous position. The foot pedal is now ready for calibration.
6. Press **Save** to retain the settings.




### Advanced Control Pedal Calibration and Testing

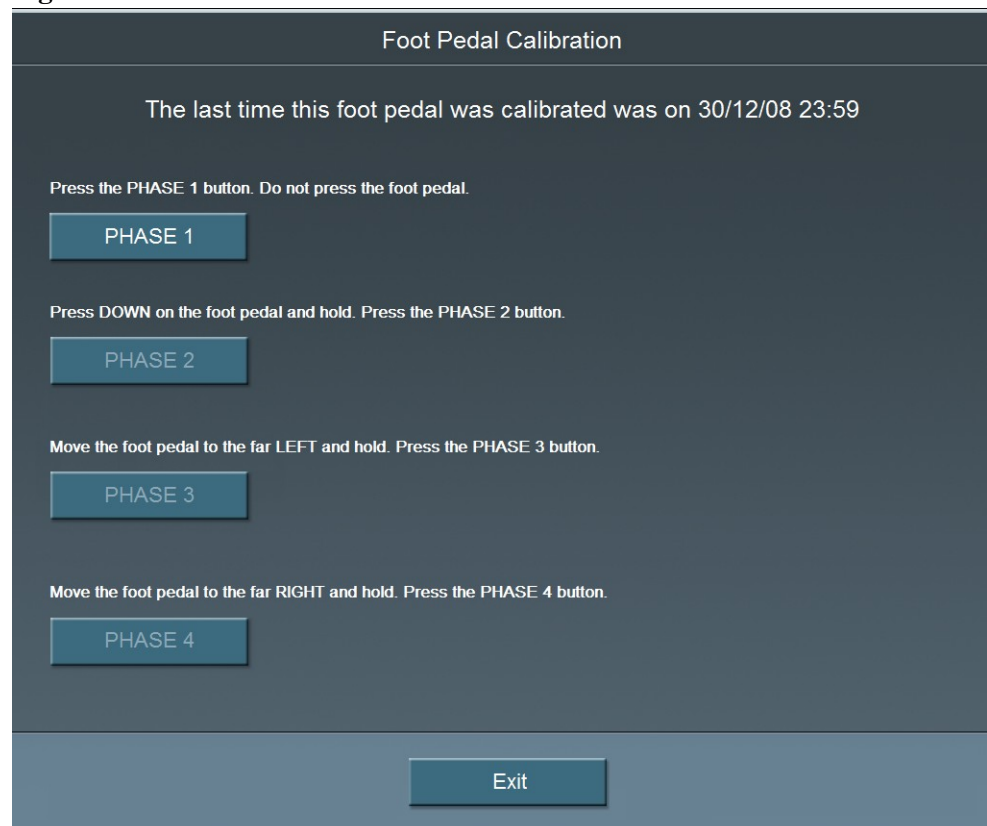
Follow these steps to calibrate and test your foot pedal.

Note: In addition to the procedure below, you can access the Advanced Control Pedal Summary screen by pressing the foot pedal symbol near the top of the screen.

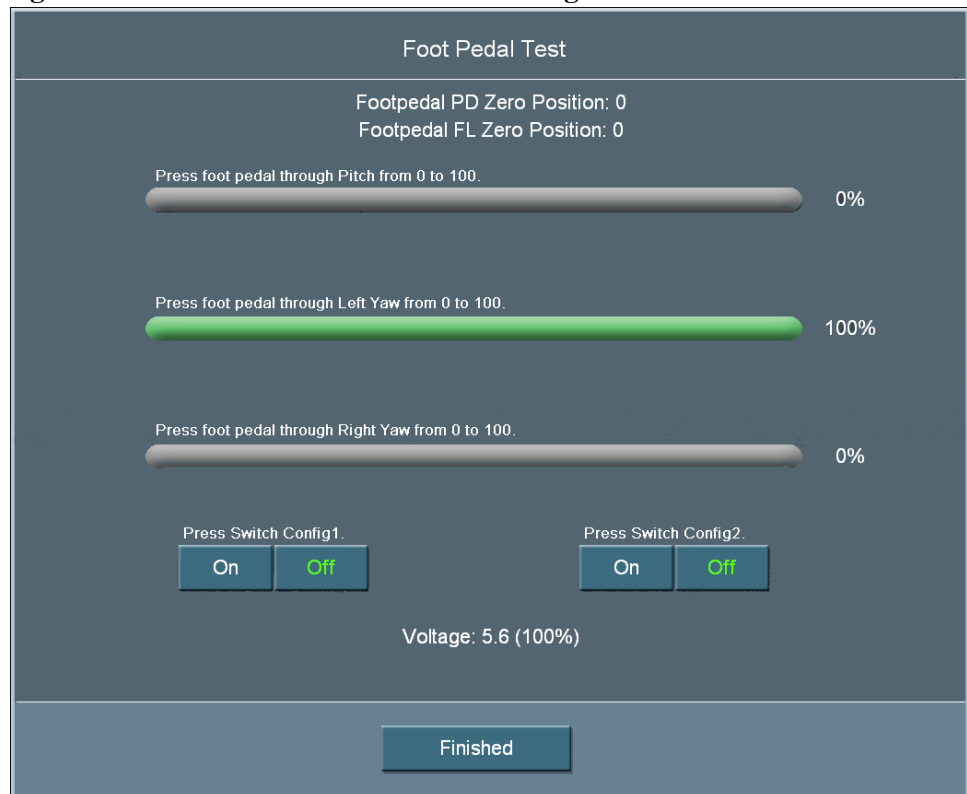


1. On the Surgeons and Programs screen, press .
2. Press the **Calibration** button.

**Figure 4.18 – Advanced Control Pedal Calibration**



3. With your foot off the foot pedal, press the **Phase 1** button.
4. Put your foot on the foot pedal, press and hold the foot pedal all the way down and press the **Phase 2** button.
5. Move the pedal to the far left and hold that position while you press the **Phase 3** button.
6. Move the pedal to the far right and hold that position while you press the **Phase 4** button.

**Figure 4.19 – Advanced Control Pedal Testing**

7. Press the foot pedal down fully to position 3. As the foot pedal travels through positions 1 and 2 to position 3, the progress bar shows its current state. When the pedal reaches the bottom of position 3, the progress bar should be solid green.
8. Press each of the four switches. When a switch is pressed, the **On** button for that switch turns green and its **Off** button turns white. When you release the switch, the **On** button for that switch turns white and its **Off** button turns green.
9. Press the **Finished** button when you complete the testing of your foot switch.
10. Press **Exit** to close the Foot Pedal Set Up screen.
11. To test the foot pedal without performing a calibration, press **Test** and follow the instructions on the screen.

### Advanced Linear Pedal Setup

**Note:** Only use the Abbott Medical Optics specified replacement battery in the Advanced Linear Pedal to ensure correct system performance. See “Charging Options for Wireless Devices” on page 8-5.

The Advanced Linear Pedal does not need to be calibrated.

**Figure 4.20 – Advanced Linear Pedal**



- |                                 |              |
|---------------------------------|--------------|
| 1. Handle                       | 4. Heel rest |
| 2. Left and Right Top Switches  | 5. Pedal     |
| 3. Left and Right Side Switches |              |

### Advanced Linear Pedal Connections

You can attach the Advanced Linear Pedal to the system either with a cable or with a wireless BLUETOOTH connection.

**Note:** The blue light on the pedal indicates that the foot pedal is active. The amber light indicates that the battery needs to be charged.

To use the “Wired” connect the foot pedal cable to the connector on the top left side of the foot pedal and attach the other end of the cable to the foot pedal connector on the rear panel of the system. To use the foot pedal wireless refer to Figure 6.8 – Advanced Linear Pedal Pairing Screen.

### Advanced Linear Pedal Switch Assignment

The Advanced Linear Pedal has four switches that you can assign specific functions to. Follow these steps to assign functions to the foot pedal switches.

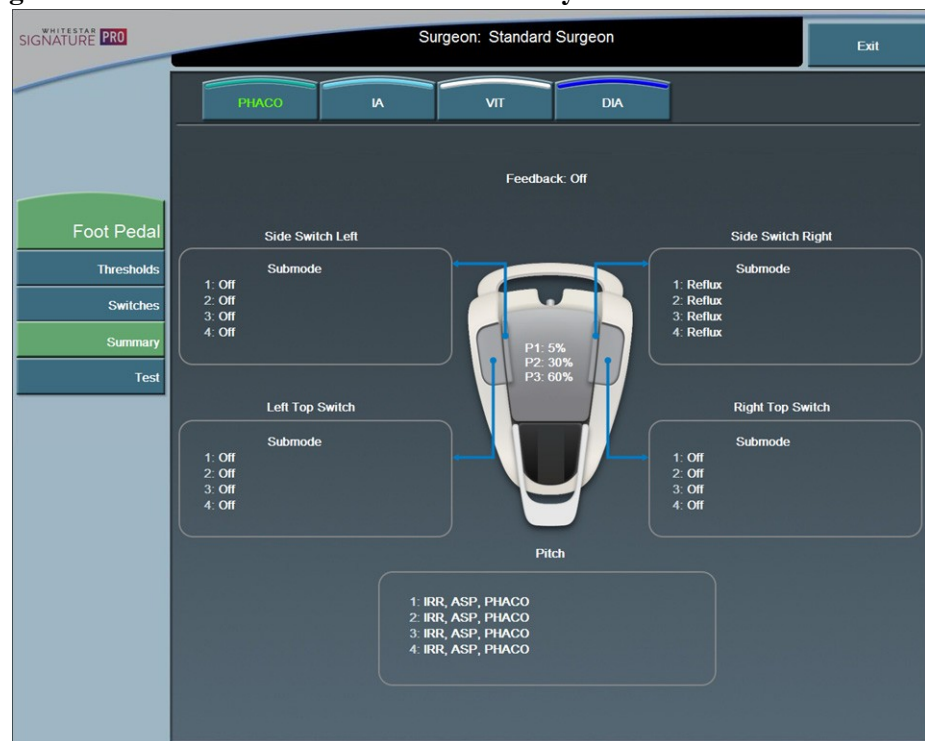
**Note:** In addition to the procedure below, you can access the Advanced Linear Pedal Summary screen by pressing the foot pedal symbol near the top of the screen.



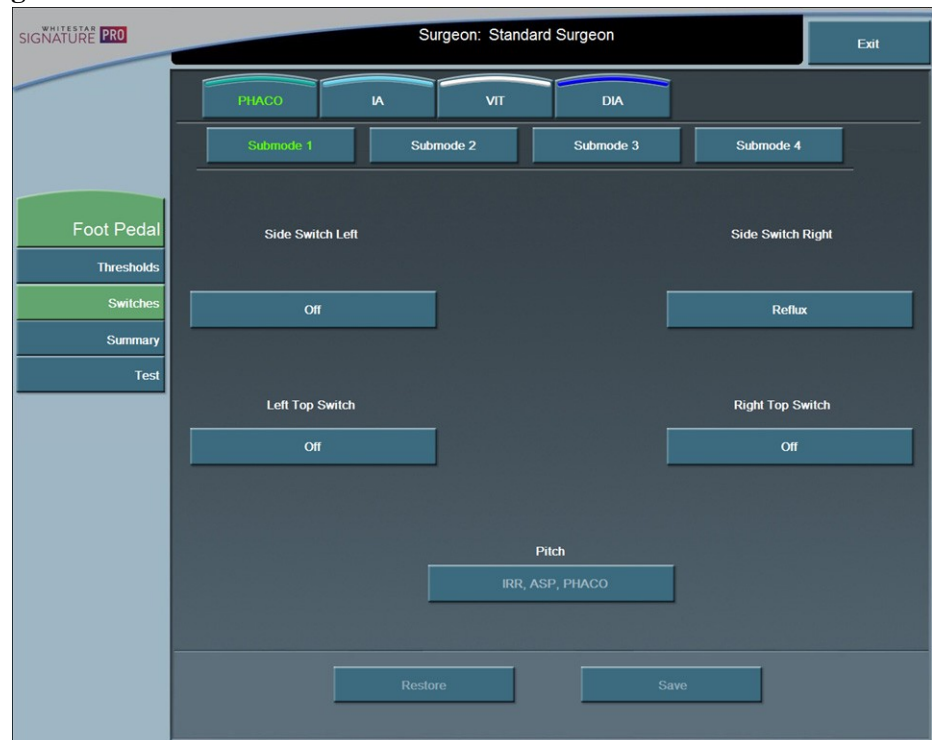
1. On the Surgeons and Programs screen, press .

**Note:** Both phaco and vitrectomy modes have individual settings per submode for the foot pedal switches. For purposes of this example, we will discuss configuring the switches for phaco.

**Figure 4.21 – Advanced Linear Pedal Summary Screen**



2. Press the **Switches** button to change the settings for the switches. The system displays the Advanced Linear Pedal edit screen. The Advanced Linear Pedal edit screen allows you to assign or change the action for each of the four switches.

**Figure 4.22 – Advanced Linear Pedal Switches Screen**

3. Select the major mode and then the applicable submode.
4. Press the button under each switch to assign or change the action for that switch. The system displays a switch assignment dialog box with the text of the current switch assignment shown in green.

**Note:** If you select Next Major Mode, Previous Major Mode, Next Active Mode or Previous Active Mode as a foot pedal switch setting, the Vitrectomy mode cannot be selected as you cycle through the different modes and submodes.