


EMI TEST REPORT

On Model Name: Microwave Oven

Model Number: TC044NYYN

Brand Name: 

Prepared for Guangdong Midea Kitchen Appliances
Manufacturing Co.,Ltd

FCC ID Number: VG8TC044NYYN

According to

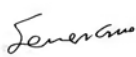
FCC Part 18(2013)


Industrial, Scientific and Medical Equipment

FCC/OST MP-5(1986)

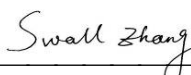
FCC methods of measurements of radio noise emission from
industrial,scientific and medical equipment

Test Report #: GUA-1310-11081-FCC

Tested by: 
Sewen Guo/Engineer ECMG
Company Name

Reviewed by: 
Jawen Yin/Senior Engineer ECMG
Company Name

QC Manager: 
Swall Zhang/QC Manager ECMG
Company Name

Test Report Released by: 
Swall Zhang December 12th, 2013
Date

Test Location

Tests performed in a Certified ANSI Semi-Anechoic Chamber and Shielded Room.

*Test Site Location : GD WILOT VACUUM ELECTRONIC EMC
TEST LABORATORY*

*Beijiao, ShunDe, FoShan, GuangDong,
528311, China*

Tel : (86)-757-26326917

Fax : (86)-757- 22607341

Test Facility

The test facility was recognized, certified, or accredited by the following organizations:

FCC – Registration No.: 910385

GD WILOT VACUUM ELECTRONIC EMC TEST LABORATORY has been registered and fully described in a report filed with the (FCC) Federal Communications Commission. The acceptance letter from the FCC was maintained in our files.

Table of Contents

<i>LIST ATTACHED FILES</i>	<i>1</i>
<i>GOVERNMENT DISCLAIMER NOTICE</i>	<i>2</i>
<i>REPRODUCTION CLAUSE</i>	<i>2</i>
<i>OPINIONS AND INTERPRETATIONS</i>	<i>2</i>
<i>STATEMENT OF MEASUREMENT UNCERTAINTY</i>	<i>2</i>
<i>ADMINISTRATIVE DATA</i>	<i>3</i>
<i>EUT DESCRIPTION</i>	<i>4</i>
<i>EUT MODEL DERIVED</i>	<i>4</i>
<i>TEST SUMMARY</i>	<i>6</i>
<i>LOAD FOR MICROWAVE OVEN</i>	<i>7</i>
<i>EUT EXERCISE SOFTWARE</i>	<i>7</i>
<i>EQUIPMENT MODIFICATION</i>	<i>7</i>
<i>EUT SAMPLE PHOTOS FOR MODEL TC044N6VN</i>	<i>9</i>
<i>TEST SYSTEM DETAILS</i>	<i>14</i>
<i>CONFIGURATION OF TESTED SYSTEM</i>	<i>15</i>
<i>ATTACHMENT 1 –RADIATION HAZARD TEST</i>	<i>16</i>
<i>ATTACHMENT 2 – INPUT POWER MEASUREMENT</i>	<i>19</i>
<i>ATTACHMENT 3 – RF OUTPUT POWER MEASUREMENT</i>	<i>22</i>
<i>ATTACHMENT 4 – OPERATING FREQUENCY MEASUREMENT</i>	<i>25</i>
<i>ATTACHMENT 5 – CONDUCTED EMISSION TEST RESULTS</i>	<i>28</i>
<i>ATTACHMENT 6 – RADIATED EMISSION TEST RESULTS</i>	<i>33</i>

List Attached Files

<i>Exhibit Type</i>	<i>File Description</i>	<i>File Name</i>
<i>Test Report</i>	<i>Test Report</i>	<i>VG8TC044NYYN _Test Report.pdf</i>
<i>Operation Description</i>	<i>Technical Description</i>	<i>VG8TC044NYYN _Operation Description.pdf</i>
<i>External Photos</i>	<i>External Photos</i>	<i>VG8TC044NYYN _External Photos</i>
<i>Internal Photos</i>	<i>Internal Photos</i>	<i>VG8TC044NYYN _Internal Photos</i>
<i>Block Diagram</i>	<i>Block Diagram</i>	<i>VG8TC044NYYN _Block Diagram.pdf</i>
<i>Schematics</i>	<i>Circuit Diagram</i>	<i>VG8TC044NYYN _Schematics.pdf</i>
<i>ID Label/Location</i>	<i>Label and Location</i>	<i>VG8TC044NYYN _Label & Location.pdf</i>
<i>User Manual</i>	<i>User Manual</i>	<i>VG8TC044NYYN _User's Manual.pdf</i>
<i>Test set-up photos</i>	<i>Test set-up photos</i>	<i>VG8TC044NYYN _Test Set-up Photos</i>

Government Disclaimer Notice

When government drawing, specification, or other data are used for any purpose other than in connection with a definitely related government procurement operation, the United States Government thereby incurs no responsibility nor any obligation whatsoever; and the fact that the Government may have formulated, furnished, or in any way supplied the said drawing, specifications, or other data, is not to be regarded by implication or otherwise in any manner licensing the holder or any other person or corporation, or conveying any rights or permission to manufacture, use, or sell patented invention that may in any way be related thereto. This report must not be used to claim product endorsement by NVLAP or any agency of the U.S. Government.

Reproduction Clause

Any reproduction of this document must be done in full. No single part of this document may be reproduced without permission from ECMG Electronic Technical Testing Corp (Shenzhen).

Opinions and Interpretations

This test report relates to the abovementioned equipment under test (EUT). Without the permission of ECMG Electronic Technical Testing Corp (Shenzhen). Test Lab this test report is not permitted to be duplicated in extracts. This test report does not entitle to carry any test mark on this or similar products. The manufacturer has sole responsibility of continued compliance of the device.

Statement of Measurement Uncertainty


The data and results referenced in the document are true and accurate. The reader is cautioned that there may be errors within the calibration limits of the equipment and facilities that can account for a nominal measurement error. Furthermore, component and process variability of devices similar to that tested may result in additional deviation.

Administrative Data

Test Sample : *Microwave Oven*

Model Numbers : *TC044NYYN*

Model Tested : *TC044N6VN*

Brand Name : 

Receipt Date : *December 6th, 2013*

Date Tested : *December 9th, 2013 to December 11th, 2013*

Applicant : *Guangdong Midea Kitchen Appliances
Manufacturing Co.,Ltd*

Address : *No.6, Yong An Road, Beijiao, Shunde, Foshan.*

Telephone : *(86)-757-23606480*

Fax : *(86)-757-22607341*

Manufacturer : *Guangdong Midea Kitchen Appliances
Manufacturing Co.,Ltd*

Address : *No.6, Yong An Road, Beijiao, Shunde, Foshan.*

Telephone : *(86)-757-23606480*

Fax : *(86)-757-22607341*

Factory : *Guangdong Midea Kitchen Appliances
Manufacturing Co.,Ltd*

Address : *No.6, Yong An Road, Beijiao, Shunde, Foshan.*

Telephone : (86)-757-23606480

Fax : (86)-757-22607341

EUT Description

Guangdong Midea Kitchen Appliances Manufacturing Co.,Ltd. model tested TC044N6VN (referred to as the EUT in this report) is a Microwave Oven.

The technical specifications of EUT are as below:

<i>Power Supply</i>	<i>208/240V 60Hz</i>
<i>Rated Input Power (Microwave)</i>	<i>1750W</i>
<i>Rated Output Power (Microwave)</i>	<i>1000W</i>
<i>Frequency</i>	<i>2450 MHz(Class B/Group 2)</i>
<i>Magnetron Model</i>	<i>2M303H</i>
<i>Magnetron Manufacturer</i>	<i>TOSHIBA</i>

NOTE: For more detailed information or features please refer to user's manual of EUT.

EUT Model Derived

TC044NYYN model designations are as follows:

T: Touch type keypad Electronic Controller;

C: Microwave function +Grill + Convection;

FCC Test Report #: GUA-1310-11081-FCC

Prepared for Guangdong Midea Kitchen Appliances Manufacturing Co.,Ltd

Prepared by ECMG Electronic Technical Testing Corp (Shenzhen).

Page 4 of 37

0: Output power rating 1000W;

44: Cavity Size: 44 = 44 liters;

N: Design No;

YY: 0-9 or A-Z, indicate different appearance;

N: Stands for 208/240V 60Hz.

Model TC044N6VN was used for the final testing.

Test Summary

The electromagnetic compatibility requirements on model TC044N6VN for this test are stated below. all results listed in this report relate exclusively to this above-mentioned model as the equipment under test. this report confers no approval or endorsement upon any other component, host or subsystem used in the test set-up.

<i>Emission Tests</i>				
<i>Specifications</i>	<i>Description</i>	<i>Test Results</i>	<i>Test Point</i>	<i>Remark</i>
<i>FCC Part 18:2013 FCC/OST MP-5:1986 ANSI C63.4-2009</i>	<i>Radiation Hazard Measurement</i>	<i>Passed</i>	<i>Enclosure</i>	<i>Attachment 1</i>
<i>FCC Part 18:2013 FCC/OST MP-5:1986 ANSI C63.4-2009</i>	<i>Input Power Measurement</i>	<i>Passed</i>	<i>AC Input Port</i>	<i>Attachment 2</i>
<i>FCC Part 18:2013 FCC/OST MP-5:1986 ANSI C63.4-2009</i>	<i>RF Output power Measurement</i>	<i>Passed</i>	<i>EUT</i>	<i>Attachment 3</i>
<i>FCC Part 18:2013 FCC/OST MP-5:1986 ANSI C63.4-2009</i>	<i>Operating Frequency Measurement</i>	<i>Passed</i>	<i>EUT</i>	<i>Attachment 4</i>
<i>FCC Part 18:2013 FCC/OST MP-5:1986 ANSI C63.4-2009</i>	<i>Conducted Emission</i>	<i>Passed</i>	<i>AC Input Port</i>	<i>Attachment 5</i>
<i>FCC Part 18:2013 FCC/OST MP-5:1986 ANSI C63.4-2009</i>	<i>Radiated Emission</i>	<i>Passed</i>	<i>Enclosure</i>	<i>Attachment 6</i>

Load for Microwave Oven

For all measurements the energy developed by the oven was absorbed by a dummy load consisting of a quantity of tap water in a beaker. If the oven was provided with a shelf or other utensil support, this support was in its initial normal position. For ovens rated at 1000watts or less power output, the beaker contained quantities of water as listed in the following subparagraphs. For ovens rated at more than 1000watts output, each quantity was increased by 50% for each 500watts or fraction thereof in excess of 1000 watts. Additional beakers were used if necessary.

-Load for power output measurement: 1000 milliliters of water in the beaker located in the center of the oven.

-Load for frequency measurement: 1000 milliliters of water in the beaker located in the center of the oven.

-Load for measurement of radiation on second and third harmonic: Two loads, one of 700 and the other of 300 milliliters, of water are used. Each load is tested both with the beaker located in the center of the oven and with it in the right front corner.

-Load for all other measurements: 700 milliliters of water, with the beaker located in the center of the oven.

EUT Exercise Software

No test software support this test.

Equipment Modification

Any modifications installed previous to testing by Guangdong Midea Kitchen Appliances Manufacturing Co.,Ltd. will be incorporated in each production model sold or leased in United States.

There were no modifications installed by ECMG Electronic Technical Testing Corp (Shenzhen) test personnel.

EUT Sample Photos for Model TC044N6VN



EUT Front View



EUT Back View

FCC Test Report #: GUA-1310-11081-FCC

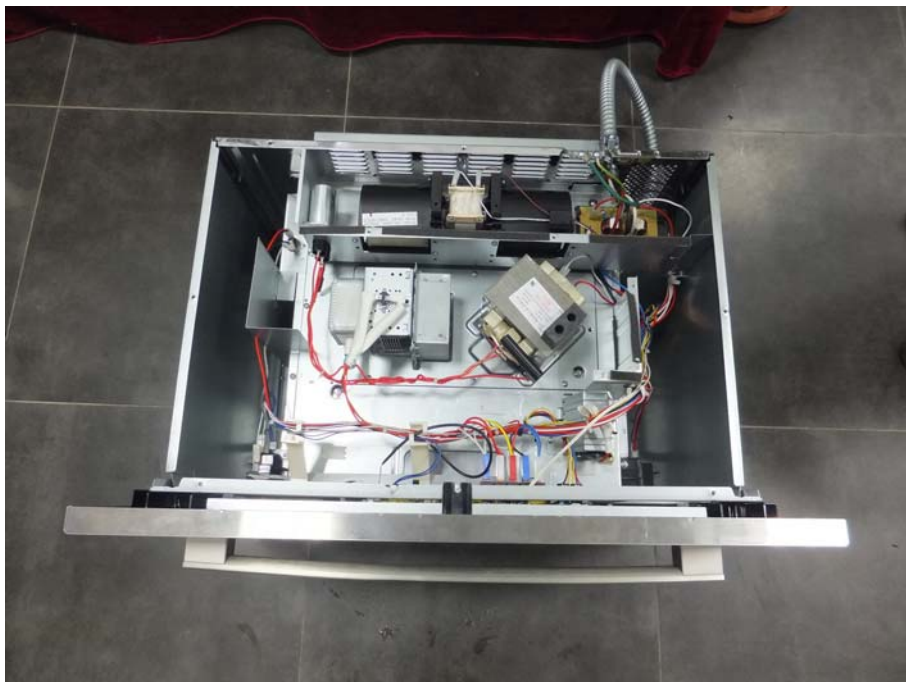
Prepared for Guangdong Midea Kitchen Appliances Manufacturing Co.,Ltd

Prepared by ECMG Electronic Technical Testing Corp (Shenzhen).

Page 9 of 37



Door Opended View



EUT Uncovered View

FCC Test Report #: GUA-1310-11081-FCC

Prepared for Guangdong Midea Kitchen Appliances Manufacturing Co.,Ltd

Prepared by ECMG Electronic Technical Testing Corp (Shenzhen).

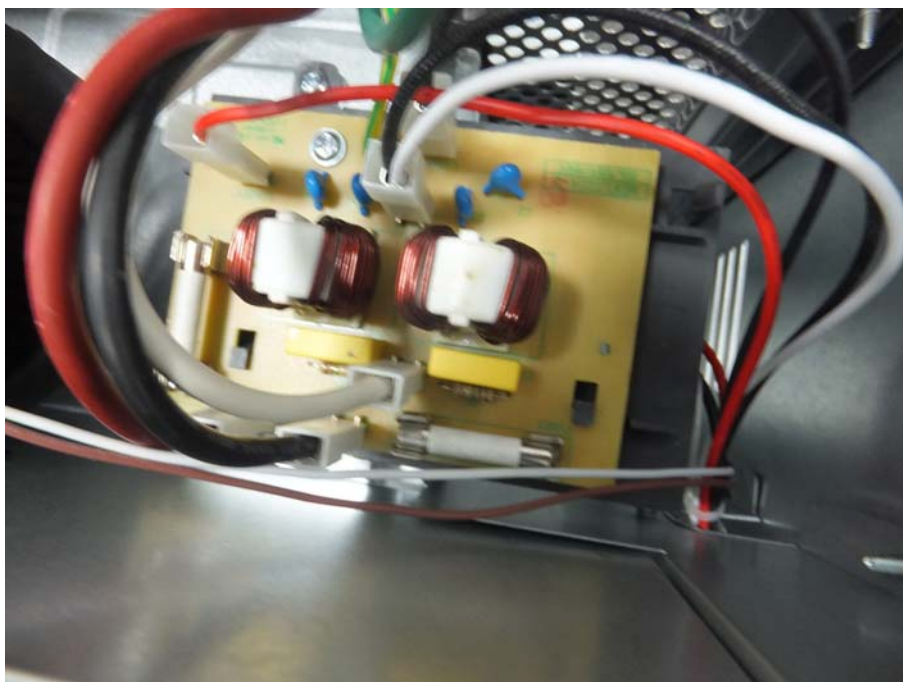
Page 10 of 37



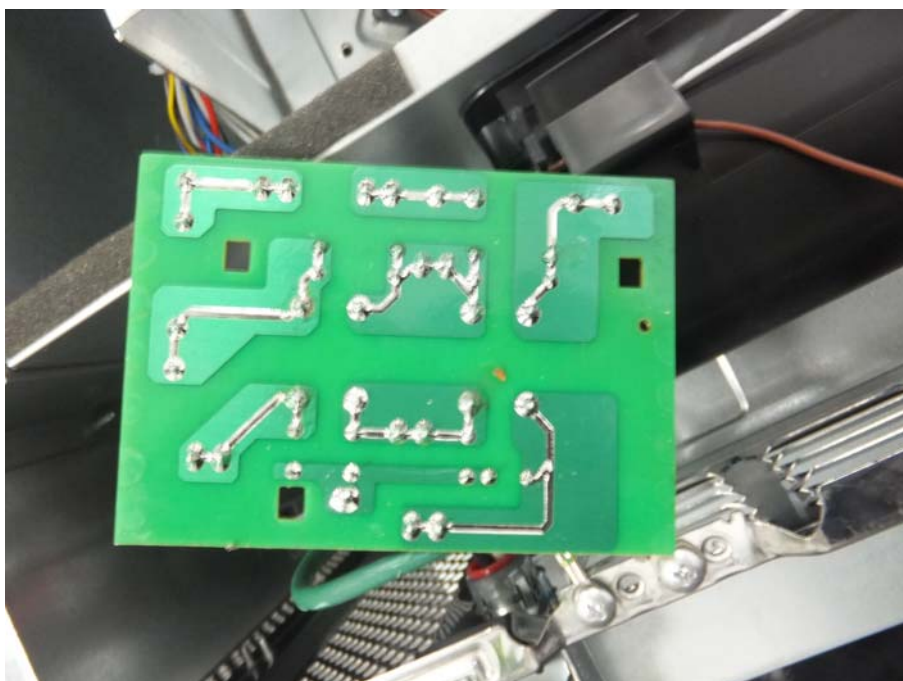
Magnetron Front View



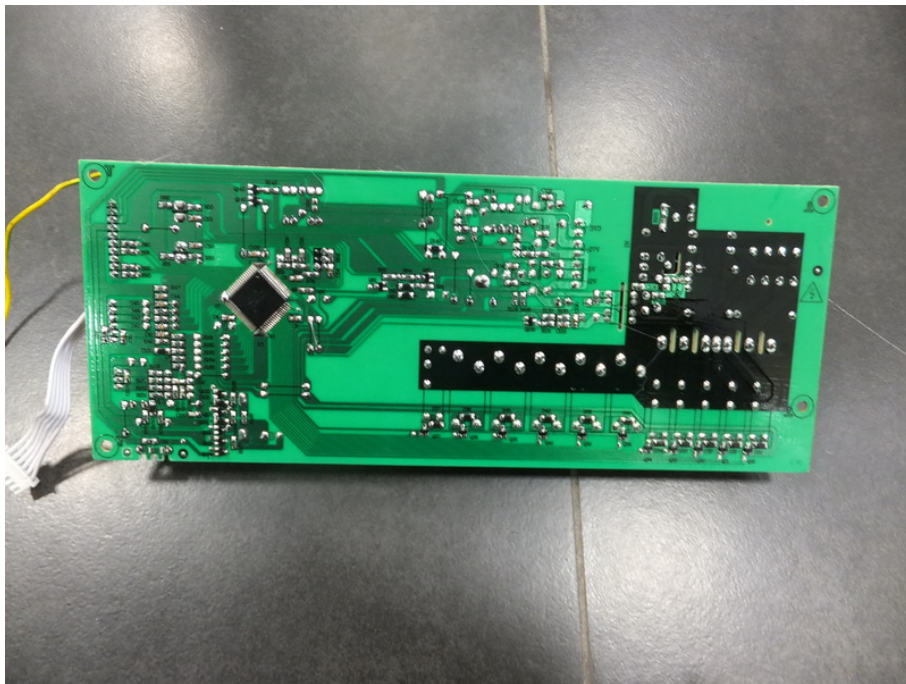
High-voltage Transformer View



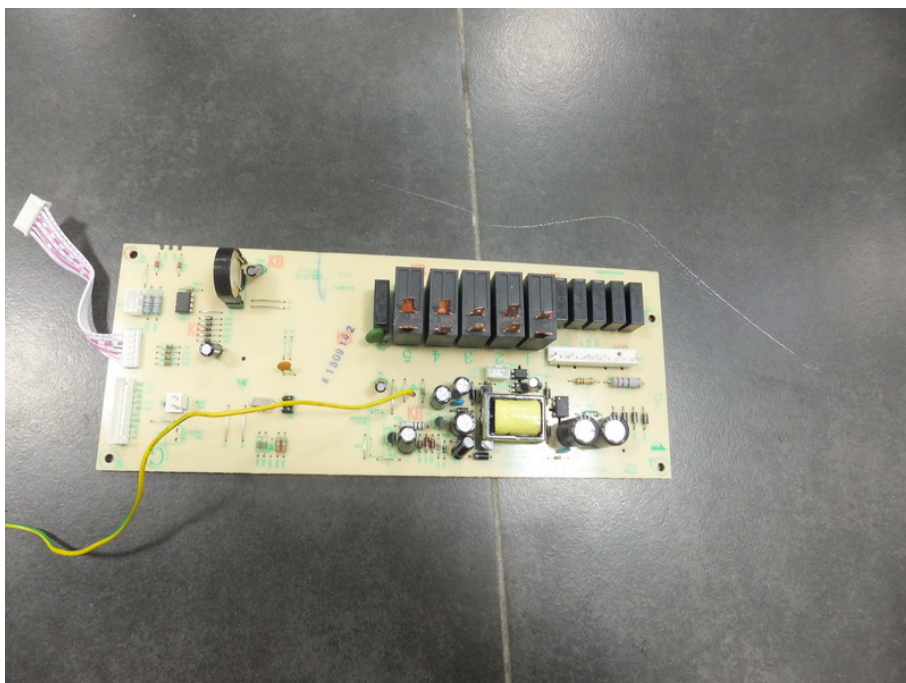
Power Filter Board Top View



Power Filter Board Bottom View



Mother board Top View



Mother board –Bottom View

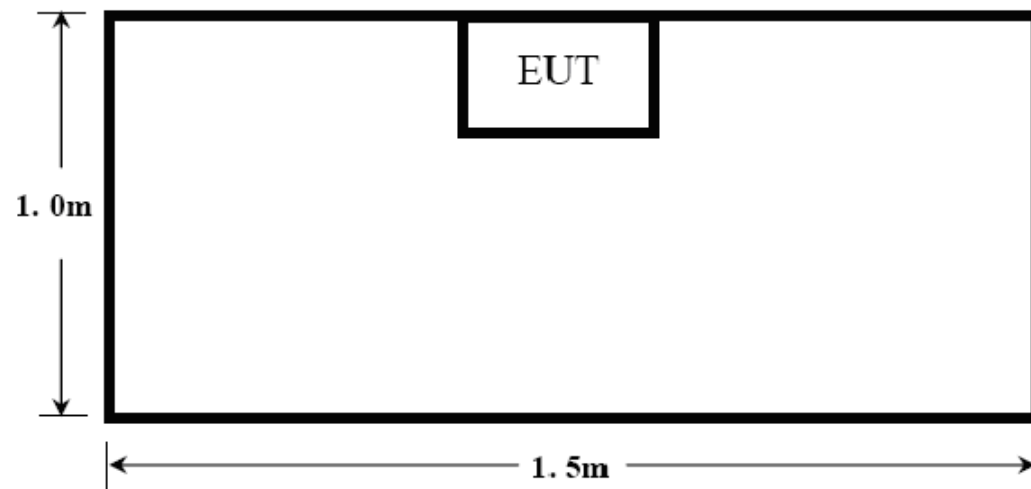
Test System Details

EUT					
Model Number:	TC044NYYN				
Model Tested:	TC044N6VN				
Description:	Microwave Oven				
Input:	AC 208/240V 60Hz				
Manufacturer:	Guangdong Midea Kitchen Appliances Manufacturing Co.,Ltd				
Support Equipment					
Description	Model Number	Serial Number	Manufacturer		
N/A					
Cable Description					
Description	From	To	Length (Meters)	Shielded (Y/N)	Ferrite (Y/N)
Power Cable	EUT	Plug	1.2	N	N
Note:The “EUT” means “Microwave Oven”.					

Note:

The EUT has been tested as an independent unit together with other necessary accessories or support units. The above support units or accessories were used to form a representative test configuration during the test tests.

Configuration of Tested System



ATTACHMENT 1 -RADIATION HAZARD TEST

CLIENT:	Guangdong Midea Kitchen Appliances Manufacturing Co.,Ltd	TEST STANDERD:	FCC Part 18
MODEL NUMBERS:	TC044NYYN	PRODUCT:	Microwave Oven
MODEL TESTED:	TC044N6VN	EUT DESIGNATION:	Home or Office
TEMPERATURE:	22°C	HUMIDITY:	51%
ATM PRESSURE:	103kPa	GROUNDING:	Through AC Power Cord
TESTED BY:	Sewen Guo	DATE OF TEST:	December 9 th ,2013
TEST REFERENCE:	ANSI C63.4-2009, FCC/OST MP-5:1986		
TEST PROCEDURE:	The EUT was set-up according to the FCC MP-5 and FCC Part 18 for Radiation Hazard Measurement. The measurement was using a microwave leakage meter to measure the Radiation leakage in the as-received condition with the oven door closed. A 700ml water load in a beaker was located in the center of the oven and the Microwave Oven was set to maximum power. While the oven operating, the microwavemeter will check the leakage and then record the maximum leakage.		
TESTED RANGE:	N/A		
TEST VOLTAGE:	AC 208/240V 60Hz		
RESULTS:	There was no microwave leakage exceeding a power level of 208V/60Hz. The maximum level 0.13 mW/cm ² and 240V/60Hz The maximum level 0.14 mW/cm ² observed at any point 5cm or more from the external surface of the oven. A maximum of 1.0 mW/cm ² is allowed in accordance with the applicable FCC standards. Hence, microwave leakage in the as-received condition with the oven door closed was below the maximum allowed. The test results relate only to the equipment under test provided by client.		
CHANGES OR MODIFICATIONS:	There were no modifications installed by ECMG Electronic Technical Testing Corp (Shenzhen) test personnel.		
M. UNCERTAINTY:	0.0001mW/cm ²		

Test Equipment List:

<i>Test Equipment</i>	<i>Model No.</i>	<i>Manufacturer</i>	<i>Serial No.</i>	<i>Last Cal.</i>	<i>Cal. Interval</i>
<i>Microwave Measurement</i>	<i>HOLADAY</i>	<i>HI-1710A</i>	<i>00122261</i>	<i>2013.10.23</i>	<i>2014.10.23</i>
<i>Note: All testing were performed using internationally recognized standards. All test instruments were calibrated and traceable to the National Institute of Standards and Technology (NIST).</i>					

TESTED BY: *Jenerano* **ENGINEER** *ECMG* **COMPANY NAME**

REVIEWED BY: *Jenerano* **SENIOR ENGINEER** *ECMG* **COMPANY NAME**



Radiation Hazard Test Set-up (208V/60Hz)



Radiation Hazard Test Set-up (240V/60Hz)

ATTACHMENT 2 – INPUT POWER MEASUREMENT

CLIENT:	Guangdong Midea Kitchen Appliances Manufacturing Co.,Ltd	TEST STANDERD:	FCC Part 18
MODEL NUMBERS:	TC044NYYN	PRODUCT:	Microwave Oven
MODEL TESTED:	TC044N6VN	EUT DESIGNATION:	Home or Office
TEMPERATURE:	21°C	HUMIDITY:	69%
ATM PRESSURE:	103.1kPa	GROUNDING:	Through AC Power Cord
TESTED BY:	Sewen Guo	DATE OF TEST:	December 9 th ,2013
TEST REFERENCE:	ANSI C63.4-2009, FCC/OST MP-5:1986		
TEST PROCEDURE:	The EUT was set up according to the FCC MP-5 and FCC Part 18 for input power measurement. The input power and current was measured using a power analyzer. A 700ml water load in a beaker was located in the center of the oven and the Microwave Oven was set to maximum power. While the oven is operating, use a voltmeter and an ampmeter to test the AC input voltage and current.		
TESTED RANGE:	N/A		
TEST VOLTAGE:	AC 208/240V 60Hz		
RESULTS :	Based on the measured input power, the EUT was found to be operating within the intended specifications. The test results relate only to the equipment under test provided by client.		
CHANGES OR MODIFICATIONS:	There were no modifications installed by ECMG Electronic Technical Testing Corp (Shenzhen) test personnel.		
M. UNCERTAINTY :	± 5W		

Test Data:

<i>Input Voltage (Vac/Hz)</i>	<i>Input Current (amps)</i>	<i>Measured Input Power(watts)</i>	<i>Rated Microwave Input Power(watts)</i>
208.0	15.77	1776	1750
240.3	15.87	1801	1750

Test Equipments List:

<i>Test Equipment</i>	<i>Manufacturer</i>	<i>Model</i>	<i>Serial No.</i>	<i>Last Cal.</i>	<i>Cal. Due</i>
Power Meter	Ainuo	AN8726C	058704195	2013.03.14	2014.03.14
<i>Note: All testing were performed using internationally recognized standards. All test instruments were calibrated and traceable to the National Institute of Standards and Technology (NIST).</i>					

TESTED BY:**ENGINEER****ECMG****COMPANY NAME****REVIEWED BY:****SENIOR ENGINEER****ECMG****COMPANY NAME**



Input Power Test Set-Up (208V/60Hz)



Input Power Test Set-Up (240V/60Hz)

ATTACHMENT 3 – RF OUTPUT POWER MEASUREMENT

CLIENT:	Guangdong Midea Kitchen Appliances Manufacturing Co.,Ltd	TEST STANDERD:	FCC Part 18
MODEL NUMBERS:	TC044NYYN	PRODUCT:	Microwave Oven
MODEL TESTED:	TC044N6VN	EUT DESIGNATION:	Home or Office
TEMPERATURE:	22°C	HUMIDITY:	60%RH
ATM PRESSURE:	103kPa	GROUNDING:	Through AC Power Cord
TESTED BY:	Sewen Guo	DATE OF TEST:	December 9 th ,2013
TEST REFERENCE:	ANSI C63.4-2009, FCC/OST MP-5:1986		
TEST PROCEDURE:	<p>The EUT was set up according to the FCC MP-5 and FCC Part 18 for RF output power Measurement. The Caloric Method was used to determine maximum RF output power. The initial temperature of the water load was measured. A 1000ml water load in a beaker was located in the center of the oven. The oven was operated at maximum output power for 120 seconds, the temperature of the water was re-measured.</p> <p>RF Output Power = (4.2joules/calorie)(volume in milliliters)(temperature rise) / (time in seconds) = 4.2 joules/calorie × 1000 × (Final Temp – Initial Temp) / 120</p>		
TESTED RANGE:	N/A		
TEST VOLTAGE:	AC 208/240V 60Hz		
RESULTS:	<p>For 208V /60Hz: RF Output Power =700 watts. The test results relate only to the equipment under test provided by client.</p> <p>For 240V /60Hz: RF Output Power =710.5 watts. The test results relate only to the equipment under test provided by client.</p>		
CHANGES OR MODIFICATIONS:	There were no modifications installed by ECMG Electronic Technical Testing Corp (Shenzhen) test personnel.		
M. UNCERTAINTY:	± 0.3°C		

Test Result:
208V/60Hz:

<i>Initial Temp</i> (°C)	<i>Final Temp</i> (°C)	<i>Measured Times</i> (s)	<i>Measured output Power</i> (W)
20.6	40.6	120	700

Note : RF Output Power (W) = $4.2 \times 1000 \times (\text{Final Temp} - \text{Initial Temp}) / 120 = 700$ watts

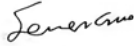
240V/60Hz:


<i>Initial Temp</i> (°C)	<i>Final Temp</i> (°C)	<i>Measured Times</i> (s)	<i>Measured output Power</i> (W)
20.6	40.9	120	710.5

Note : RF Output Power (W) = $4.2 \times 1000 \times (\text{Final Temp} - \text{Initial Temp}) / 120 = 710.5$ watts

Test Equipments list:

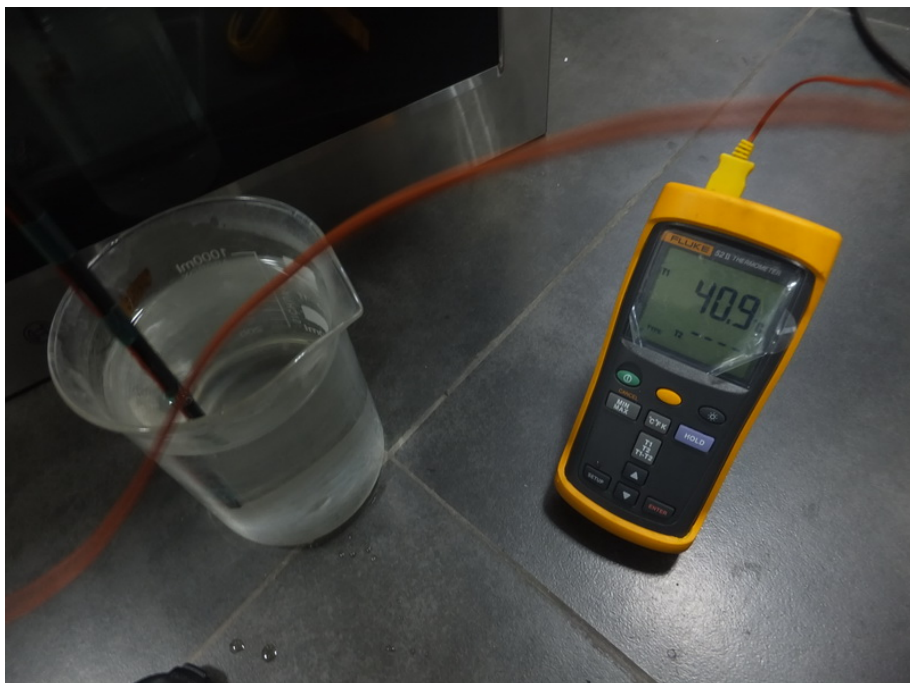
<i>Test Equipment</i>	<i>Manufacturer</i>	<i>Model</i>	<i>Serial No.</i>	<i>Last Cal.</i>	<i>Cal. Due</i>
<i>Digit Thermometer</i>	<i>Fluke Corporation</i>	<i>Fluke 51 II</i>	<i>87500204</i>	<i>2013.04.07</i>	<i>2014.04.07</i>
<i>Stopwatch</i>	<i>CASIO</i>	<i>HS-3</i>	<i>312Q01</i>	<i>2013.10.10</i>	<i>2014.10.10</i>
Note: All testing were performed using internationally recognized standards. All test instruments were calibrated and traceable to the National Institute of Standards and Technology (NIST).					

TESTED BY:  ECMG
COMPANY NAME
ENGINEER

REVIEWED BY:  ECMG
COMPANY NAME
SENIOR ENGINEER



RF Output Power Test Set-Up (208V/60Hz)



RF Output Power Test Set-Up (240V/60Hz)

ATTACHMENT 4 – OPERATING FREQUENCY MEASUREMENT

CLIENT:	Guangdong Midea Kitchen Appliances Manufacturing Co.,Ltd	TEST STANDERD:	FCC Part 18
MODEL NUMBERS:	TC044NYYN	PRODUCT:	Microwave Oven
MODEL TESTED:	TC044N6VN	EUT DESIGNATION:	Home or Office
TEMPERATURE:	22°C	HUMIDITY:	60%RH
ATM PRESSURE:	101.1kPa	GROUNDING:	Through AC Power Cord
TESTED BY:	Sewen Guo	DATE OF TEST:	December 11 st ,2013
TEST REFERENCE:	ANSI C63.4-2009, FCC/OST MP-5:1986		
TEST PROCEDURE:	<p>The EUT was set up according to the FCC MP-5 and FCC Part 18 for Operating Frequency Measurement.</p> <p>1) The variation of frequency with time. The operating frequency was measured using a spectrum analyzer. Starting with the EUT at room temperature, a 1000ml water load in a beaker was located in the center of the oven. Set a spectrum analyzer with antenna at 3 meters distance form the oven and the oven was operated at maximum output power. The fundamental operating frequency was monitored until the water load was reduced to 20 percent of the original load.</p> <p>2) The variation of frequency with Line Voltage. The operating frequency was measured using a spectrum analyzer. The EUT was operated/warmed by at least 10 minutes of use with a 1000ml water load at room temperature at the beginning of the test. Then the operating frequency was monitored as the input voltage was varied between 80 and 125 percent of the nominal rating.</p>		
TESTED RANGE:	2450 ± 50MHz		
TEST VOLTAGE:	AC 240&208V 60Hz		
RESULTS:	Please refer to following pages for details of the variation in operating frequency with time & line voltage measurement. The test results relate only to the equipment under test provided by client.		
CHANGES OR MODIFICATIONS:	There were no modifications installed by ECMG Electronic Technical Testing Corp (Shenzhen) test personnel.		
M. UNCERTAINTY:	Freq. ±10kHz		

208V/60Hz:

Variation in Operating Frequency with Time:

<i>Minimum Frequency (MHz)</i>	<i>Maximum Frequency (MHz)</i>
<i>2437.1</i>	<i>2442.2</i>

Variation in Operating Frequency with Line Voltage:

<i>Minimum Frequency (MHz)</i>	<i>Maximum Frequency (MHz)</i>
<i>2441.1</i>	<i>2441.7</i>

240V/60Hz:

Variation in Operating Frequency with Time:

<i>Minimum Frequency (MHz)</i>	<i>Maximum Frequency (MHz)</i>
<i>2437.9</i>	<i>2443.7</i>

Variation in Operating Frequency with Line Voltage:

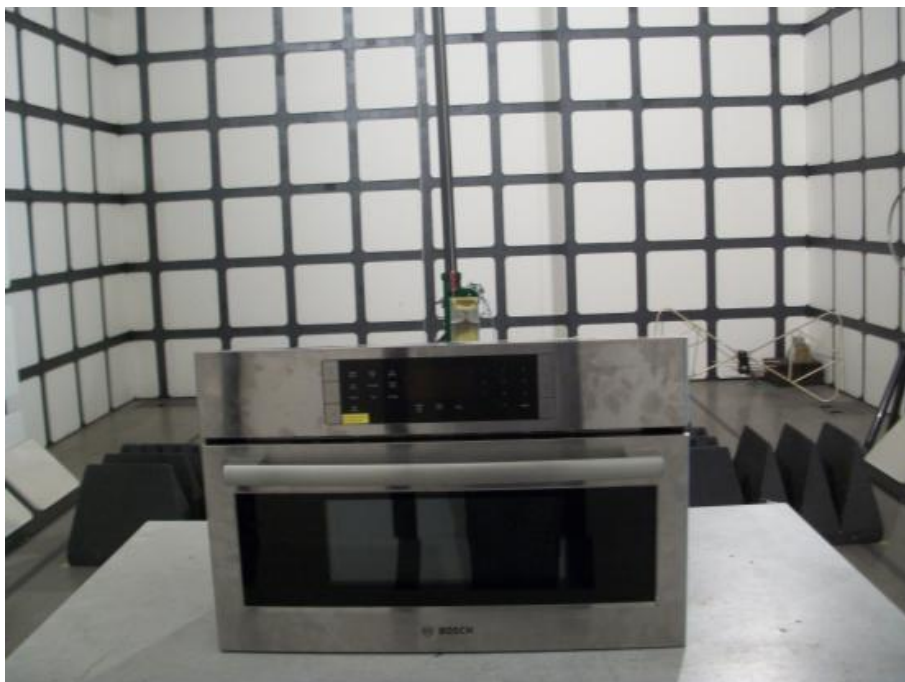
<i>Minimum Frequency (MHz)</i>	<i>Maximum Frequency (MHz)</i>
<i>2442.5</i>	<i>2443.1</i>

Test Equipments List:

<i>Test Equipment</i>	<i>Manufacturer</i>	<i>Model</i>	<i>Serial No.</i>	<i>Last Cal.</i>	<i>Cal. Due</i>
<i>EMI test receiver</i>	<i>R&S</i>	<i>ESIB-26</i>	<i>100174</i>	<i>11/18/2013</i>	<i>11/17/2014</i>
<i>Horn Antenna</i>	<i>R&S</i>	<i>HF906</i>	<i>100311</i>	<i>11/20/2013</i>	<i>11/21/2014</i>
<i>Note: All testing were performed using internationally recognized standards. All test instruments were calibrated and traceable to the National Institute of Standards and Technology (NIST).</i>					

TESTED BY: *Senen* **ENGINEER** *ECMG* **COMPANY NAME**

REVIEWED BY: *Janeyan* **SENIOR ENGINEER** *ECMG* **COMPANY NAME**



Operating Frequency Test Set-up

FCC Test Report #: GUA-1310-11081-FCC

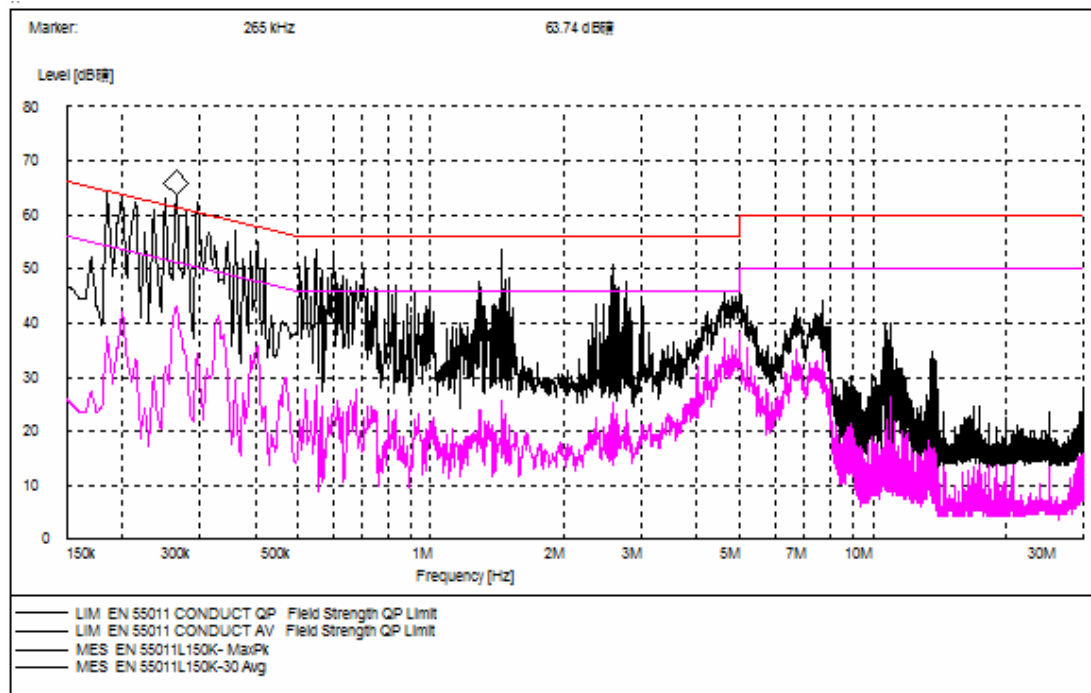
Prepared for Guangdong Midea Kitchen Appliances Manufacturing Co.,Ltd

Prepared by ECMG Electronic Technical Testing Corp (Shenzhen).

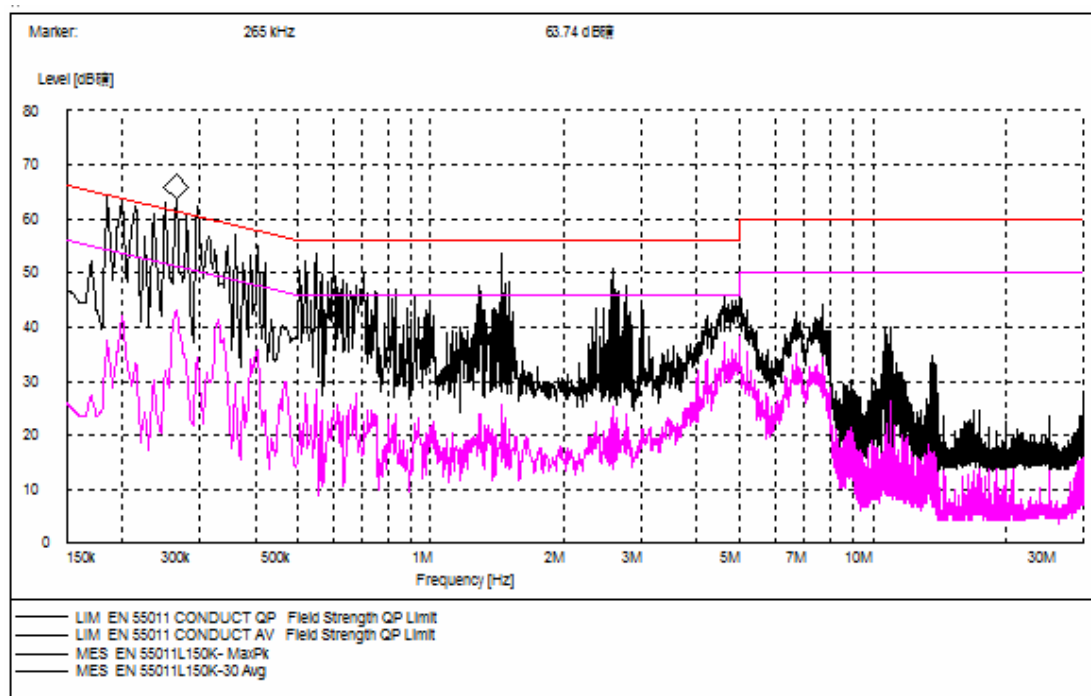
Page 27 of 37

ATTACHMENT 5 - CONDUCTED EMISSION TEST RESULTS

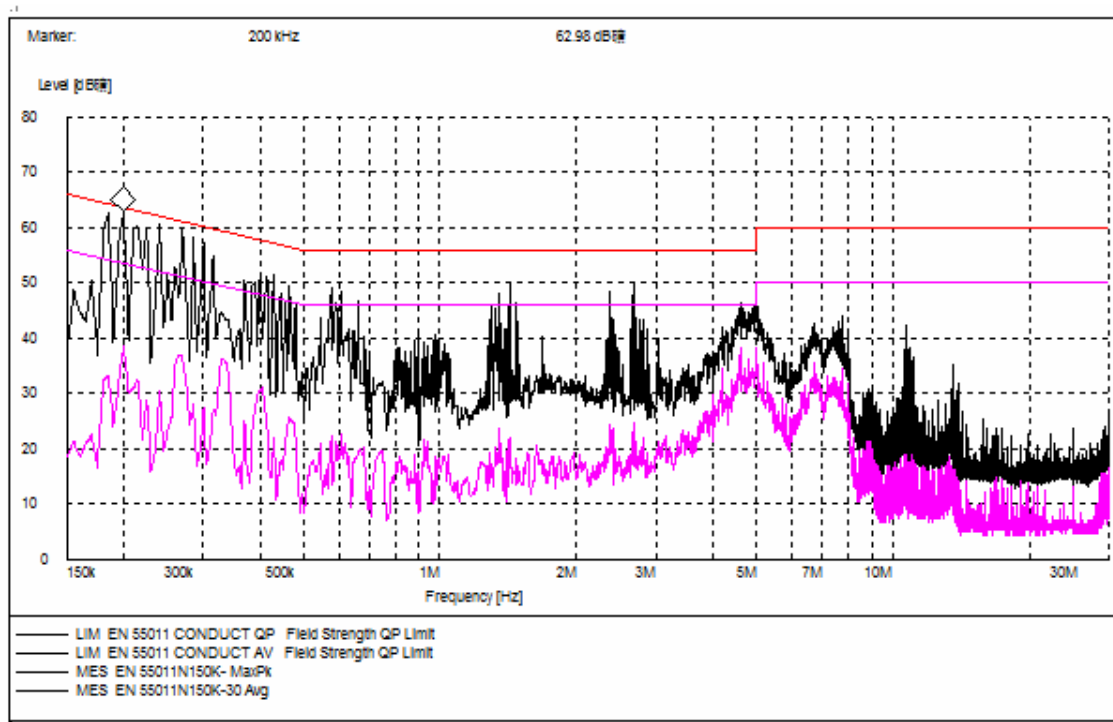
CLIENT:	Guangdong Midea Kitchen Appliances Manufacturing Co.,Ltd	TEST STANDERD:	FCC Part 18
MODEL NUMBERS:	TC044NYYN	PRODUCT:	Microwave Oven
MODEL TESTED:	TC044N6VN	EUT DESIGNATION:	Home or Office
TEMPERATURE:	22°C	HUMIDITY:	67%RH
ATM PRESSURE:	101.1kPa	GROUNDING:	Through AC Power Cord
TESTED BY:	Sewen Guo	DATE OF TEST:	December 11 st ,2013
TEST REFERENCE:	ANSI C63.4-2009, FCC/OST MP-5:1986		
TEST PROCEDURE:	The EUT was set up according to the guideline of ANSI C63.4-2009 & FCC MP-5 for conducted emissions. The measurement was using a AMN on each line and an EMI receiver peak scan was made at the frequency measurement range. The six highest significant peaks were then marked, and these signals were then quasi-peaked and averaged. The frequency range investigated was from 150kHz to 30MHz.		
TESTED RANGE:	150kHz to 30MHz		
TEST VOLTAGE:	Pre-Scan has been conducted to determine the worst-case from all possible combination between available input voltage. The worst-case AC 240V/60Hz was used for the final testing.		
RESULTS:	The EUT meets the requirements of test reference for Conducted Emissions. The test results relate only to the equipment under test provided by client.		
CHANGES OR MODIFICATIONS:	There were no modifications installed by ECMG Electronic Technical Testing Corp (Shenzhen) test personnel.		
M. UNCERTAINTY:	±2.5 dB		



Line L1 Conducted Emission Graph



Line L2 Conducted Emission Graph



Line N Conducted Emission Graph

Test Data:

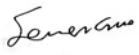
Lines (L/N)	Frequency (MHz)	Corrected QP Level (dBμV)	Limits QP (dBμV)	Margin QP (dB)	Frequency (MHz)	Corrected AV Level (dBμV)	Limits AV (dBμV)	Margin QP (dB)
L1	0.200	50.4	63.6	-13.2	0.200	31.3	53.6	-22.3
L1	0.315	50.3	59.8	-9.5	0.315	27.4	49.8	-22.4
L1	0.360	43.7	58.7	-15	0.360	28.7	48.7	-20.0
L2	0.200	50.4	63.6	-13.2	0.200	31.3	53.6	-22.3
L2	0.315	50.3	59.8	-9.5	0.315	27.4	49.8	-22.4
L2	0.360	43.7	58.7	-15	0.360	28.7	48.7	-20.0
N	0.150	49.8	66	-16.2	0.150	34.9	56	-21.1
N	0.185	50.9	64.3	-13.4	0.185	27.8	54.3	-26.5
N	0.315	47.2	59.8	-12.6	0.315	36.9	49.8	-12.9

Note :

- 1) All readings are using a bandwidth of 9 kHz, with a 500 ms sweep time. A video filter was not use.
- 2) "QP" means "Quasi-Peak" values, "AV" means "Average" values.
- 3) The other reading are too low against official limits that are not be recorded.

Test Equipments List:

<i>Test Equipment</i>	<i>Manufacturer</i>	<i>Model No.</i>	<i>Serial No.</i>	<i>Last Cal.</i>	<i>Cal. Due</i>
<i>EMI test receiver</i>	<i>R&S</i>	<i>ESIB-26</i>	<i>100174</i>	<i>11/19/2013</i>	<i>11/18/2014</i>
<i>LISN</i>	<i>R&S</i>	<i>ESH2-Z5</i>	<i>100091</i>	<i>11/19/2013</i>	<i>11/18/2014</i>
<i>Transient Limiter</i>	<i>Agilent</i>	<i>11947A</i>	<i>3107A03648</i>	<i>11/19/2013</i>	<i>11/18/2014</i>
<i>Shielding Room</i>	<i>TDK</i>	<i>8m×4m×3m</i>	<i>N/A</i>	<i>04/17/2013</i>	<i>04/16/2014</i>
<i>Note: All testing were performed using internationally recognized standards. All test instruments were calibrated and traceable to the National Institute of Standards and Technology (NIST).</i>					

TESTED BY:  **ENGINEER** **ECMG** **COMPANY NAME**

REVIEWED BY:  **SENIOR ENGINEER** **ECMG** **COMPANY NAME**



Conducted Emission Test Set-up

ATTACHMENT 6 – RADIATED EMISSION TEST RESULTS

CLIENT:	Guangdong Midea Kitchen Appliances Manufacturing Co.,Ltd	TEST STANDERD:	FCC Part 18
MODEL NUMBERS:	TC044NYYN	PRODUCT:	Microwave Oven
MODEL TESTED:	TC044N6VN	EUT DESIGNATION:	Home or Office
TEMPERATURE:	22°C	HUMIDITY:	67%RH
ATM PRESSURE:	103.0kPa	GROUNDING:	Through AC Power Cord
TESTED BY:	Sewen Guo	DATE OF TEST:	December 11 st ,2013
TEST REFERENCE:	ANSI C63.4-2009, FCC/OST MP-5:1986		
TEST PROCEDURE:	<p>The EUT was set up according to the guidelines of ANSI C63.4-2009& FCC MP-5 for radiated emissions. Microwave Oven was placed on a 1m *1.5m nonconductive table. The top of the table is 1.0 m above the ground. The table is placed on a flush mounted metal turntable. An EMI receiver peak scan was made at the frequency measurement range (pre-scan) in an Anechoic chamber. Signal discrimination was then performed and the significant peaks marked. All data was recorded in Quasi-peak detection mode from 30 MHz to 1GHz and average detector mode above 1GHz.</p> <p>The following data lists the significant emission frequencies, measured levels, correction factors (including cable and antenna correction factors), and the corrected readings against the limits. Explanation of the Correction Factor are given as follows:</p> <p>FS= RA + AF + CF - AG</p> <p>Where: FS = Field Strength</p> <p>RA = Receiver Amplitude</p> <p>AF = Antenna Factor</p> <p>CF = Cable Attenuation Factor</p> <p>AG = Amplifier Gain</p>		
TESTED RANGE:	30MHz to 18GHz		
TEST VOLTAGE:	Pre-Scan has been conducted to determine the worst-case from all possible combination between available input voltage. The worst-case AC 240V 60Hz was used for the final testing.		
RESULTS:	The EUT meet the requirements of test reference for radiated emissions. The test results relate only to the equipment under test provided by client.		
CHANGES OR MODIFICATIONS:	There were no modifications installed by ECMG Electronic Technical Testing Corp (Shenzhen) test personnel.		
M. UNCERTAINTY:	± 3.2 dB		

Field strength limits for out-of-band emissions :

For RF output power <500W, Limit at 300m = 27.96dBuV/m

For RF output power >500W, Limit at 300m = 20log

$[25 * \text{SQRT}(\text{Power}/500)] \text{dBuV/m}$

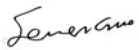
Test Data :

30MHz - 1GHz						
Frequency [MHz]	Antenna Polarization [V/H]	Corrected Reading [dB_μV/m]	Factor (dB)	Field Strength [dB_μV/m]	Delta, QP [dB]	3 Meters Limits [dB_μV/m]
51.383	V	19.4	10.4	29.8	-39.7	69.5
523.747	V	14.4	18.1	32.5	-37.0	69.5
828.718	V	23.2	26.6	49.8	-19.7	69.5
337.578	H	19	13.6	32.6	-36.9	69.5
496.523	H	16.3	17.5	33.8	-35.7	69.5
751.180	H	15.3	24.3	39.6	-29.9	69.5
Note: 1) All readings are quasi-peak unless stated otherwise, using a bandwidth of 120kHz, with a 60s sweep time. A video filter was not used. 2) Field Strength = Read Level + Factor, Factor = Antenna Factor + Cable Loss - Preamp Factor.						
1GHz - 18GHz						
Frequency [GHz]	Antenna Polarization [V/H]	Corrected Reading [dB_μV/m]	Factor (dB)	Field Strength [dB_μV/m]	Delta, AV [dB]	3 Meters Limits [dB_μV/m]
7.419	V	28.79	21.51	50.3	-19.2	69.5
8.651	V	26.88	22.42	49.3	-20.2	69.5
17.339	V	13.69	39.71	53.4	-16.1	69.5
8.411	H	24.88	22.42	47.3	-22.2	69.5
9.914	H	30.53	28.07	58.6	-10.9	69.5
17.339	H	7.74	43.56	51.3	-18.2	69.5

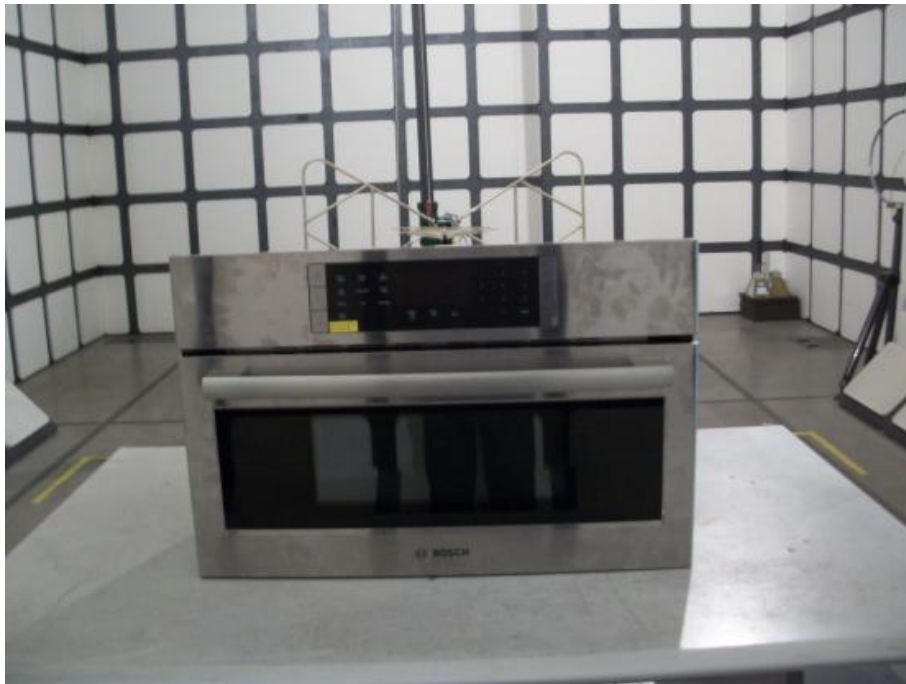
Note: 1) All readings are average unless stated otherwise, using a bandwidth of 1MHz, with a 60s sweep time. A video filter was not used. 2) Field Strength = Read Level + Factor, Factor = Antenna Factor + Cable Loss - Preamp Factor.

Test Equipments List:

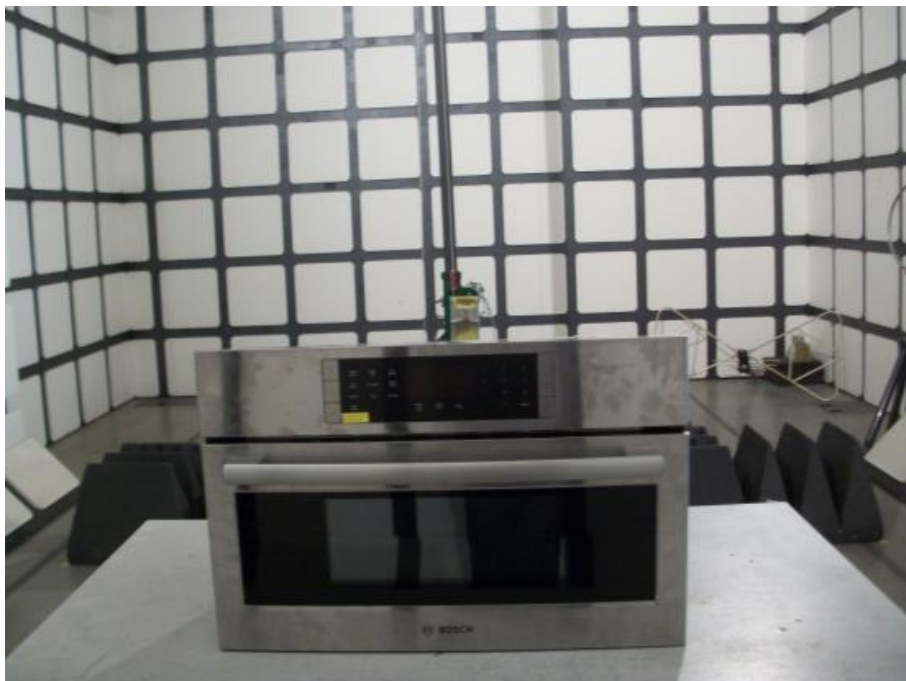
<i>Test Equipment</i>	<i>Manufacturer</i>	<i>Model</i>	<i>Serial No.</i>	<i>Last Cal.</i>	<i>Cal. Due</i>
<i>EMI test receiver</i>	<i>R&S</i>	<i>ESIB-26</i>	<i>100174</i>	<i>11/19/2013</i>	<i>11/18/2014</i>
<i>Horn Antenna</i>	<i>R&S</i>	<i>HF906</i>	<i>100311</i>	<i>11/21/2013</i>	<i>11/20/2014</i>
<i>Hybrid Log Periodic Antenna</i>	<i>TDK</i>	<i>HLP-3003C</i>	<i>130144</i>	<i>11/21/2013</i>	<i>11/20/2014</i>
<i>Loop Antenna</i>	<i>ETS</i>	<i>ETS-6152</i>	<i>24934</i>	<i>11/21/2013</i>	<i>11/20/2014</i>
<i>Anechoic Chamber</i>	<i>TDK</i>	<i>9m×6 m×5.7m</i>	<i>N/A</i>	<i>04/17/2013</i>	<i>04/16/2014</i>
<i>Note: All testing were performed using internationally recognized standards. All test instruments were calibrated and traceable to the National Institute of Standards and Technology (NIST).</i>					

TESTED BY:  **ENGINEER** ECMG **COMPANY NAME**

REVIEWED BY:  **SENIOR ENGINEER** ECMG **COMPANY NAME**



Radiated Emission Test Set-up (30 –1,000MHz)



Radiated Emission Test Set-up (1–18GHz)