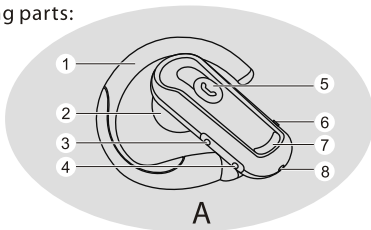


1 *Charging a headset*

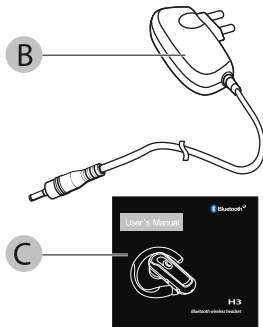
The headset contains the following parts:

- 1.Ear Hook
- 2.Speaker
- 3.Volume Up Button
- 4.Volume Down Button
- 5.Multi-function Button
- 6.Charging Socket
- 7.Indicator Light
- 8.Microphone



Package Contents:

- A. Bluetooth headset
- B. A/C power adapter
- C. User Manual



2 *Pair to your Bluetooth phone*

Before you use your headset for the first time, ensure that it is paired to use it with devices such as your Bluetooth phone.

Once you pair the headset with a device, the Headset will be automatically connected to the device wherever you turn the headset on.

Ensure the headset is off.



Press and hold the Multi-Function Button until you see blinking Blue and Red light. (Approximately 6 seconds), then release.



Set your Bluetooth phone to "discover" the headset by following your phone's instruction guide. Typically, "Bluetooth" menu on your phone and the selecting the option to "discover" a Bluetooth device.



Your phone will find your headset and if you want to pair with it. Confirm this by pressing "yes" or "OK".



Enter passkey or PIN=0000 (4 zeros), then press "yes" or "OK".

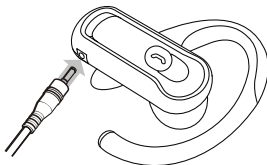
IMPORTANT!

When the headset paired with mobile phone, the indication light will flash 3 times every 2 seconds. If failed, the blue indicator light will flash 2 time every 2 seconds.

3 *Charge the battery*

This device has an internal, nonremovable, rechargeable battery. Do not attempt to remove the battery from the device as you may damage the device.

1. Connect the charger to a wall outlet.
2. While the charger is connected, the red indicator light will break off displaying 5 seconds at first, and then resume displaying during charging. If charging does not start, disconnect the charger, plug it in again, and retry. Charging the battery fully may take up to 2 hours.
3. When the battery is fully charged, the red indicator light turns off.
Disconnect the charger from the headset and the wall outlet.



The fully charged battery has power for up to 4-6.5 hours of talk-time or up to 120-180 hours of standby time. However, the talk and standby times may vary when used with different mobile phones or other compatible Bluetooth devices, usage settings, usage styles, and environments
When battery power is low, the headset will remind you by beeps every 20 seconds, and the red indicator light starts to flash.

4 *Battery information*

Your device is powered by a chargeable battery. the full performance of a new battery is achieved only after two or three complete charge and discharge cycle. The battery can be charged and discharged hundreds of times, but it will eventually wear out.

Unplug the charger from the electrical plug and the device when not in use. Do not leave a fully charged battery connected to a charger ,since overcharging may shorten its lifetime . If left unused, a fully charged battery will lose its charge over time.

If the headset would be leave unused for a long time, please charge fully and turn off the headset. To prevent overdischarge endangering the battery, you are recommended to charge the headset fully each month.

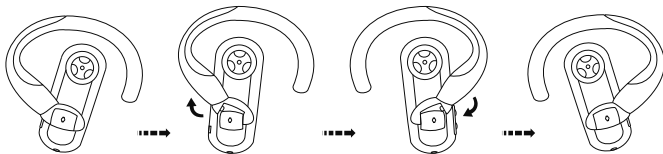
Never use any other charger that is damaged.

5 *Turning headset on /off*

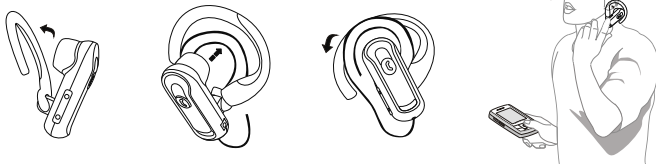
	How to act	Tones	Indicators
Turning on the headset	Press and hold the Multi-function Button for 2 seconds until you see a Blue indicator flashing, then release it.	Turn-ON melody	The Blue indicator will flash while the power is on.
Turning off the headset	Press and hold the Multi-function Button for 4 seconds until you see a Red indicator flashing, then release it.	Turn-Off melody	After Red indicator flash, it will be turned off.

Please Note: For saving the power, while the headset detects it is not connected to any device over 10 minutes, the headset will turn off automatically.

The headset can be worn on either the Left or Right ear. If you want to carry the headset on the other ear, please change the direction of the ear clamp follow the figures below.



Please wear the headset follow the below.



7 *Making a call*

*** Using phone's keypad**

- (1) Dial number on keypad.
- (2) Press phone's "send" key.
- (3) Press Volume Up Button for 2 seconds, then the call will be transferred to your mobile phone.

*** Using voice-activated dialing**

Please check if your mobile phone support voice dialing function. If support, please set up voice tags on your mobile phone.

- (1) Press the Multi-function Button briefly, the you can hear a short beep.
- (2) To say the name of person who you wants to call.
- (3) If the voice tags is paired to the relate phone number stored in you mobile phone, the number will be dial-out later.

*** Last number dialing**

- (1) Press the Volume Down for 2 seconds.
- (2) You can hear a short beep.

8 *Ending a call*

Press the Multi-function Button briefly from the headset while you are on the line. You can also end call from your mobile.

9 *Reject an incoming call*

Press and hold Multi-function Button for 2 seconds and release button when you receive an incoming call.

10 *Answering a call*

Press the Multi-function Button briefly when you receive an incoming call.

11 *Transferring a call*

(1) Headset to phone: Press Volume Up button for 2 seconds.

(2) Phone to headset: Press Volume Up button for 2 seconds.

12 *Call-waiting (Three-Way Calling)*

Before using 3 way calling with your headset, you must ensure that your phone supports the Hands-free Profile.

And it is always assumed that the " Call hold and/or multiparty" services are available in the network.

Press Multi-function Button briefly to accept receiving waiting (incoming) call and end active call.

Press Multi-function Button 2 seconds to accept waiting (incoming) call and hold active call.

13 *Volume control & Mute function*

You can adjust the volume by pressing volume up and volume down button.

Press and hold the Volume Down Button for 2 seconds, you will hear short beeps low to high. then the headset mic will be muted and you will hear remindful melody every 10 seconds. Deactivate mute function by pressing the Volume Down button.

4 seconds,you will hear short beeps low to high frist, and then hear short beeps high to low, then mute function is cancelled.

14 *Summary of button operation*

Button	ACTION	HEADSET STATUS		
		Standby (No Calls Active)	Incoming Call	1 call Active
Multi- function Button	Quick Press	Initiate Voice Dialling	Answer Call	Close Call
	2 Seconds	–	Reject Call	–
	4 Seconds	Turn headset OFF	Turn headset OFF	Turn headset OFF
Volume Up	Quick Press	Increase Volume	Increase Volume	Increase Volume
	2 Seconds	–	–	Transfer Active Call to/from Phone
	4 Seconds	–	–	–
Volume Down	Quick Press	Decrease Volume	Decrease Volume	Decrease Volume
	2 Seconds	–	–	Microphone Mute ON
	4 Seconds	–	–	Microphone Mute OFF

Button	ACTION	HEADSET STATUS	
		1 Call Active, 1 Incoming Call	1 Call Active, 1 Call on Hold
Multi- function Button	Quick Press	Answer Incoming, Close Active	Close Active, Retrieve Held Call
	2 Seconds	Answer Incoming, hold Active	Swap Calls
	4 Seconds	Turn headset OFF	Turn headset OFF
Volume Up	Quick Press	Increase Volume	Add Held Call to TWC
	2 Seconds	–	Transfer Active Call to/from Phone
	4 Seconds	–	–
Volume Down	Quick Press	Decrease Volume	Add Held Call to TWC
	2 Seconds	–	–
	4 Seconds	–	–

Please Note: The desired function is initiated only when the button is released, so it is important that the button is held for the correct period of time.

15 *Safety and general information*

1. Please read this guidebook carefully and follow the instruction.
2. To avoid any damage or malfunction of the unit do not drop unit from high places.
3. Keep away unit from humidity, water and any other liquid. And if the unit is exposed by water, moisture and other liquid directly then don't operate it to avoid any electrical shock, explosion and damage of the unit.
4. Do not place or keep the unit near the heat sources such as direct sun light, radiators, stoves or other apparatus which produce heat. It may cause explosion, degrade of performance and reduce battery life.
5. Do not modify, repair & disassemble unit at discretion (Especially battery: It may cause an explosion)
6. Do not place the heavy objects on the unit.
7. Use only supplied and approved charger.
8. Replacement or service must be done by qualified service center or manufacture.
9. Unplug this unit when unused for long periods of time or during lightning storms.



CAUTIONS: ELECTRIC SHOCK HAZARD

The battery used in this device may present a risk of fire or chemical burn if mis-treated.

16 *FCC & IC Statement*

Operation is subject to the following two conditions:

- (1) This device may not cause harmful interference, and
- (2) This device must accept any interference received, including interference that may cause undesired operation.

Note: The manufacturer is not responsible for ANY interference, for example RADIO or TV interference, caused by unauthorized modifications to this equipment.

Such modifications could void the user's authority to operate the equipment.

17 **EU**

This product is Ce marked according to the provision of the R&TTE Directive (99/5/EC).

Declares that this product is in compliance with the essential requirements and other relevant provisions of Directive 1999/5/EC.

Please note that this product uses radio frequency bands not harmonized within EU.

Within the EU this product is intended to be used in Austria, Belgium, Denmark, Finland, France, Germany, Greece, Ireland, Italy, Luxembourg, The Netherlands, Portugal, Spain, Sweden, United Kingdom and within EFTA in Iceland, Norway and Switzerland.

Bluetooth is a trademark owned by the Bluetooth SIG, Inc.

18 **Warranty**

The condition of this warranty and our responsibilities under this warranty are as follows:

Supplier's warranty is non-transferable. And this warranty is limited to the original purchaser only.

- * You must be able to prove the date of original purchase of the unit with a dated receipt.
- * The warranty is not applicable if the product has been subject to physical abuse, improper installation, modification or repair by unauthorized third party.
- * The responsibility of supplier's products shall be limited to the repair or replacement of the product at its sole discretion.
- * Specifically exempt from any warranty are limited-life consumable components subject to normal wear and tear such as batteries, decorates and other accessories.
- * A supplier will not take any responsibility if the failure of the unit has resulted from accident, abuse, misuse, or any unauthorized repair, modification or disassemble.
- * Modification and repair of the unit should be done by authorized and qualified service personnel, Center or returned to the manufactures.
- * This warranty gives you specific legal rights, and you may also have other rights which vary under local laws.

FCC NOTE:

The manufacturer is not responsible for any radio or TV interference caused by unauthorized modifications to this equipment. Such modifications could void the user's authority to operate the equipment. This device complies with Part 15 of the FCC Rules.

Operation is subject to the following two conditions:

1. This device may not cause harmful interference, and;
2. This device must accept any interference received, including interference that may cause undesired operation.