

Umnndeni Circon

*Radio Link
V410*


Operation Manual

CE 0168

INDEX

1	VUEWING THE RADIO LINK V410.....	3
2	ADDING OR CHANGING TERMINALS	6
3	PRINTING RADIO LINK V410 TEST REPORT	15
4	GENERAL INFORMATION & DISCLAMERS.....	17
5	CONTACT INFORMATION	18

CE 0168


DOC. NO.	ISSUE	TITLE	YYYY /MM /DD
CS0035	01	<i>Operation Manual</i>	2007/03/13
		Radio Link V410	Page 2 of 18

There are things that you have to observe in the view window that will show whether your Radio Link V410 is healthy or not.

- **Communication Icon.**

This icon shows whether there is healthy communication between you Radio Link V410 and your computer.

If there is a green icon with a tick mark , the communication is healthy.

If there is a red icon with an X mark , the communication has failed. Check if the Radio Link V410 has power, and that the Radio Link V410 is connected to the computer. If there is power and the communication cable is in place, and the red icon is still there; close the 'View' window and open it again.

- **The Clock.**

Check and see if the clock is counting. The program updates the clock on 5sec intervals. If the time of the clock is out, you can update it as following:

Click the 'Select Command' button. Select and click 'Synchronize Real Time Clock' and the clock will be synchronize to your computer's time.



- **Inputs.**

If you have a switch to test the inputs, you can toggle your input switches to see if they appear next to the input text, under the clock.


- **Device Information.**

Device.

Check your 'Firmware' version.

Modem.

Check that all the information is there from the Radio Link V410, especially the 'Sim' number. If there is some information missing, wait for it; as it may happen that you don't get all the modem information at the same time.

DOC. NO.	ISSUE	TITLE	YYYY /MM /DD
CS0035	01	<i>Operation Manual</i>	2007/03/13
		Radio Link V410	Page 4 of 18

Network.

Check for the '*Operator*' and '*Signal Level*' information. If these are not available, please wait for them until received.


The '*Operator*' is your service provider MTN, VodaCom...etc.

The '*Signal Level*' shows the signal strength of the module. You can also see the signal strength on the signal-barometer, which is above the '*Close*' button on the far right of the '*View*' window. The smaller the number behind the minus(-), the stronger the signal. An acceptable signal strength is along the green part of the signal-barometer. If the signal is less than the green portion of the signal-barometer, check if the antenna is correctly connected. The signal strength may also depend on the geographical location of the Radio Link V410 in the unit.

The '*Base Station*' and the '*Serving area*' are not critical to have. They are there for information purposes; to find out what is the closest network tower that the Radio Link V410 is using to send sms's. This information is dependant on your service provider to transmit.

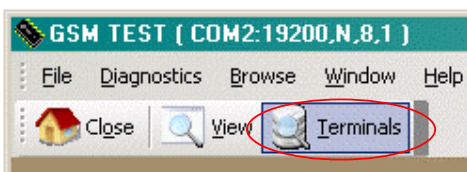
When you have checked all this information, you can close this window by clicking the '*Close*' button on the bottom right-hand corner of the '*View*' window.



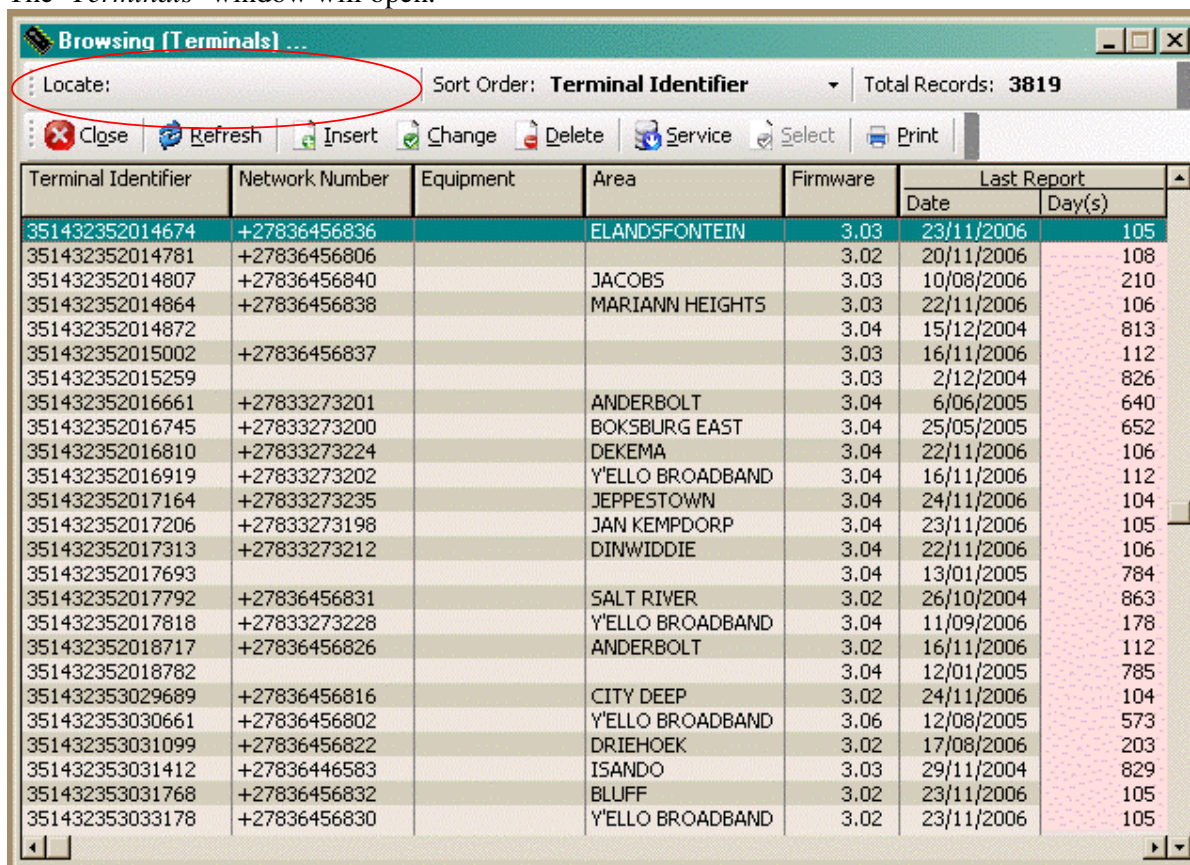
DOC. NO.	ISSUE	TITLE	YYYY /MM /DD
CS0035	01	<i>Operation Manual</i>	2007/03/13
		Radio Link V410	Page 5 of 18

2. Adding or Changing Terminals.

Terminals are the Radio Link V410s on the database. To view the Terminals, click the '*Terminals*' button.




The '*Terminals*' window will open.



This window contains the information of the Radio Link V410s that are already in the database.

To see if your Radio Link V410 is in the database; just type the IMEI number which is on the modem and it will appear next to '*Locate:*' above the '*Close*' button as you type. The database will try to match it with the Radio Link V410s that are in the database.

DOC. NO.	ISSUE	TITLE	YYYY /MM /DD
CS0035	01	<i>Operation Manual</i>	2007/03/13
 CIRCON		Radio Link V410	Page 6 of 18

If the Radio Link V410 is not found in the database, you will have to insert it in the database.


Terminal Identifier	Network Number	Equipment	Area	Firmware	Last Report	
					Date	Day(s)
358283000189845				3.13	15/01/2007	52
358283000189860	+27836332286			3.13	7/02/2007	29

- **Inserting a New Radio Link V410**

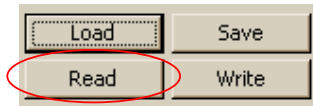
Click the 'Insert' button.

Terminal Identifier	Network Number	Equipment
358283000189845		
358283000189860	+27836332286	

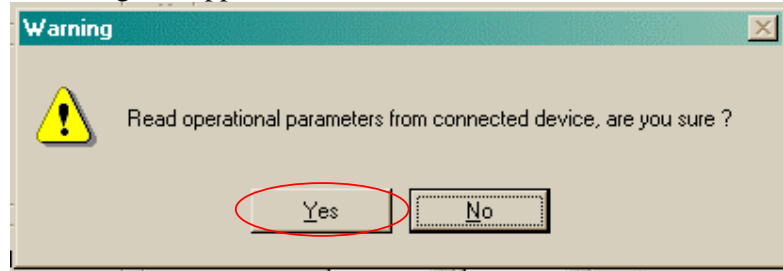
A window will open.

DOC. NO.	ISSUE	TITLE	YYYY /MM /DD
CS0035	01	Operation Manual	2007/03/13
		Radio Link V410	Page 7 of 18

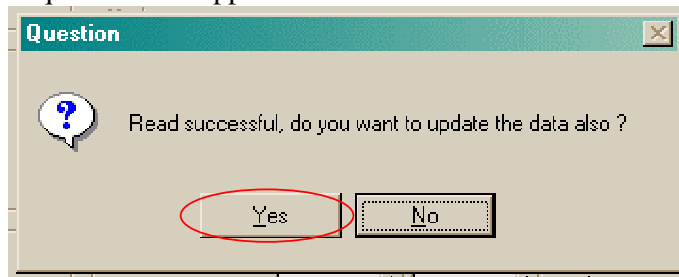
⇒ Click the '**Read**' button to information from the Radio Link V410.



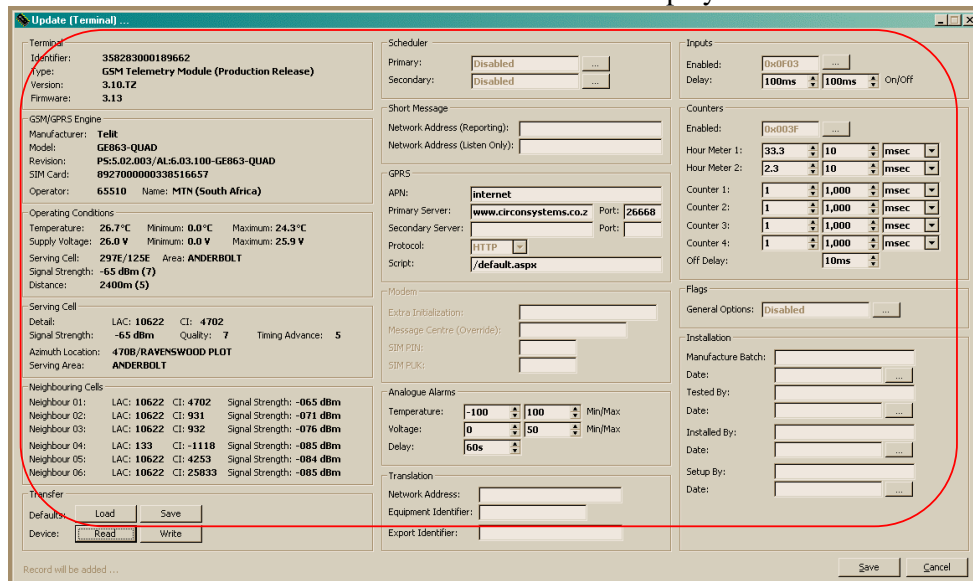
A warning box appears. Click '**Yes**'.




A question box appears. Click '**Yes**'.

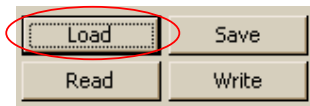


The information from the Radio Link V410 will be displayed.

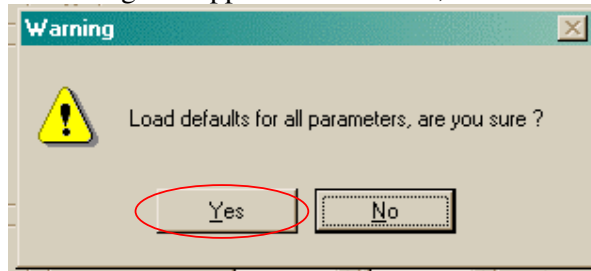


DOC. NO.	ISSUE	TITLE	YYYY /MM /DD
CS0035	01	Operation Manual	2007/03/13
		Radio Link V410	Page 8 of 18

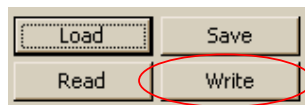
⇒ Click the '**Load**' button. This loads the pre-set configuration values / information.



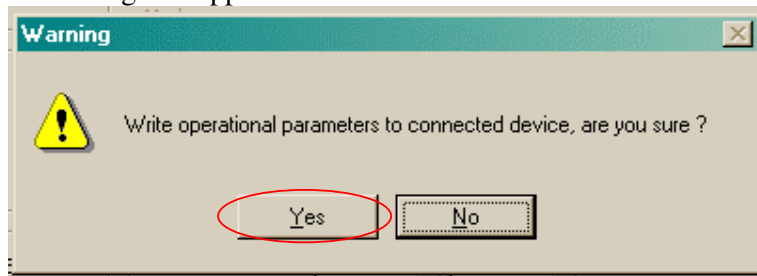
A warning box appears. Click '**Yes**', and the defaults will be loaded.



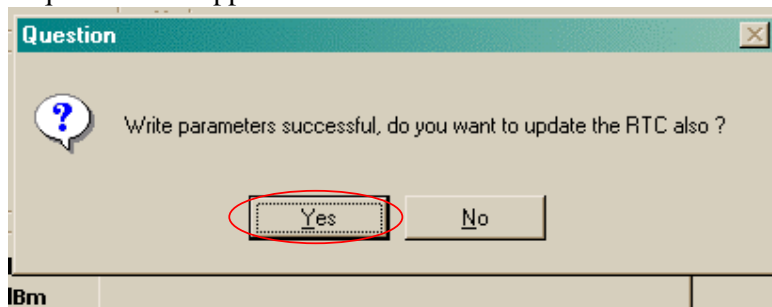
⇒ Click the '**Write**' button. This allows you to send what you have on the screen to the Radio Link V410.




A warning box appears. Click '**Yes**'.

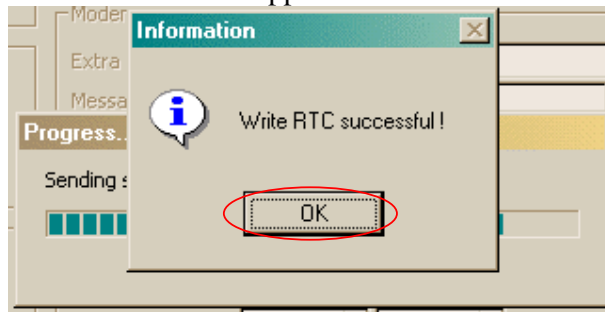


A question box appears. Click '**Yes**'.



DOC. NO.	ISSUE	TITLE	YYYY /MM /DD
CS0035	01	<i>Operation Manual</i>	2007/03/13
		Radio Link V410	Page 9 of 18

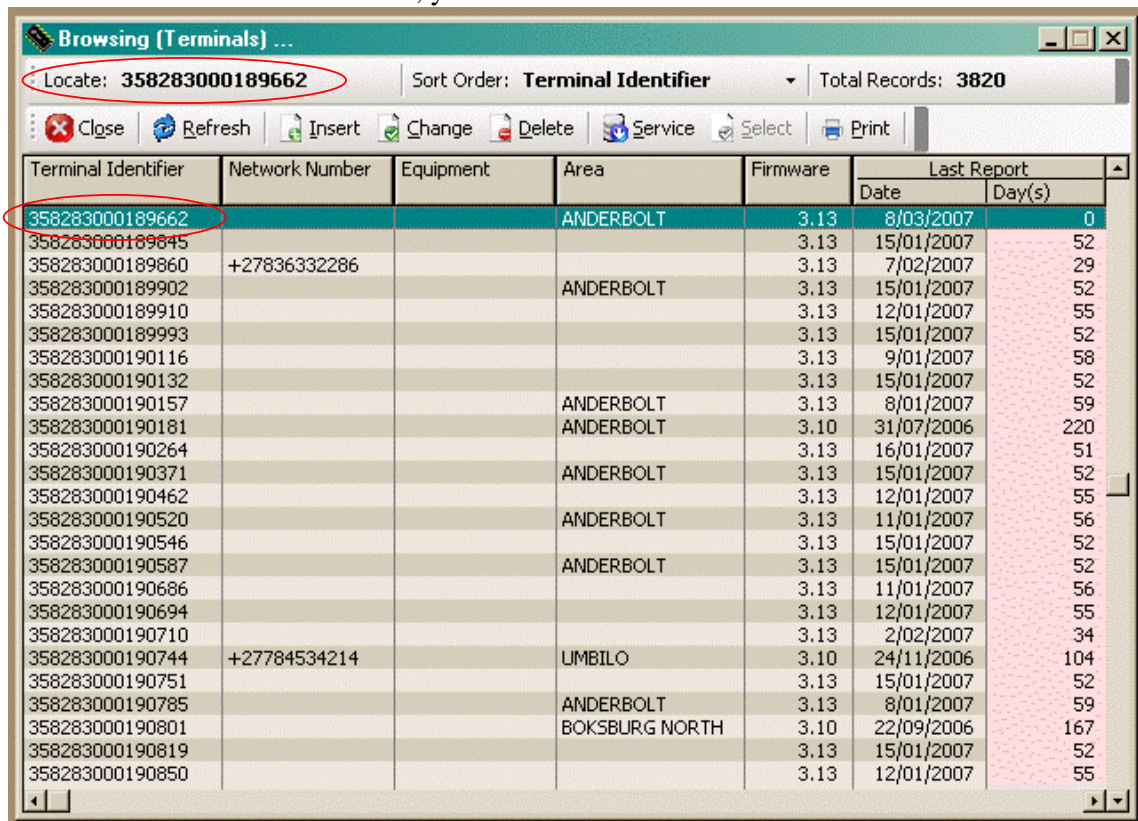
An information box appears. Click 'Ok'.




⇒ To save the information, click the 'Save' button **next to the 'Cancel' button** on the bottom right-hand corner of the window.



After that 'Save' button is clicked, you will see the 'Terminal' number in the list.



DOC. NO.	ISSUE	TITLE	YYYY /MM /DD
CS0035	01	<i>Operation Manual</i>	2007/03/13
		Radio Link V410	Page 10 of 18

- **Changing an Existing Radio Link V410**


If you want change a Radio Link V410 that is in the database already;

Terminal Identifier	Network Number	Equipment	Area	Firmware	Last Report
					Date Day(s)
358283000189662	358283000189662	358283000189662	ANDERBOLT	3.13	8/03/2007 0

Click the 'Change' button.

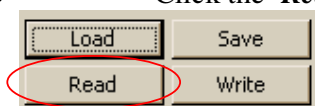
A window will open.

Record will be changed ...

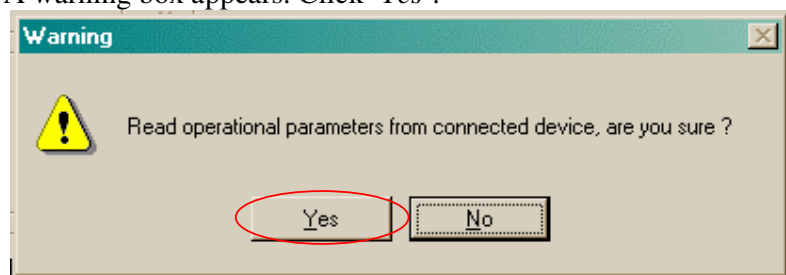
DOC. NO.	ISSUE	TITLE	YYYY /MM /DD
CS0035	01	Operation Manual	2007/03/13
		Radio Link V410	Page 11 of 18



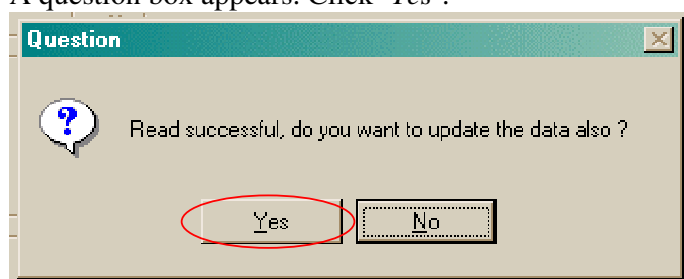
Click the '**Read**' button to information from the Radio Link V410.



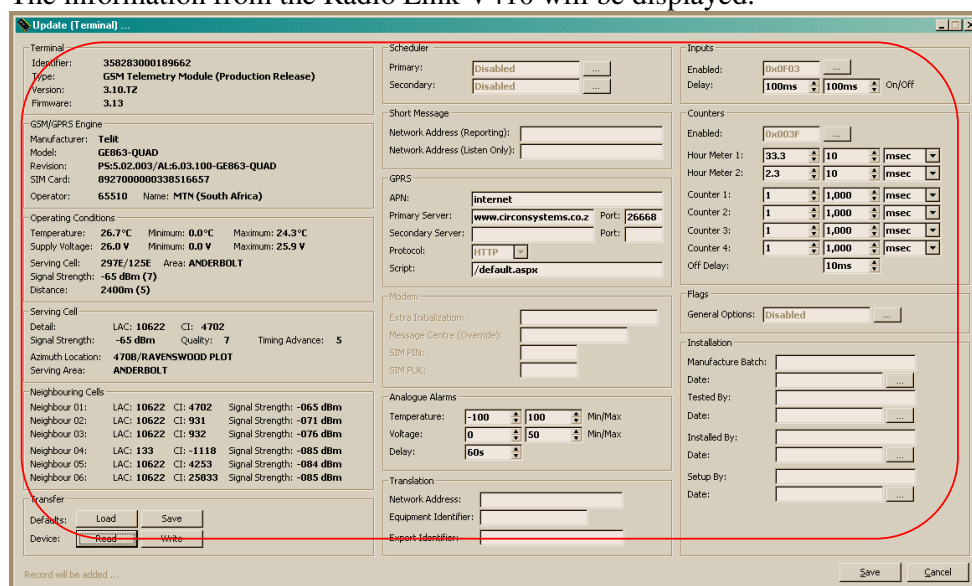
A warning box appears. Click '**Yes**'.




A question box appears. Click '**Yes**'.

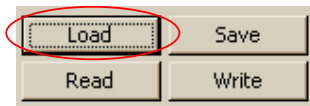


The information from the Radio Link V410 will be displayed.

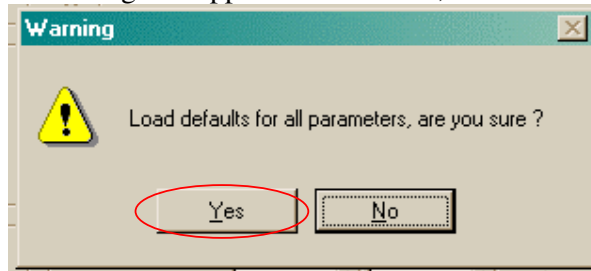


DOC. NO.	ISSUE	TITLE	YYYY /MM /DD
CS0035	01	<i>Operation Manual</i>	2007/03/13
		Radio Link V410	Page 12 of 18

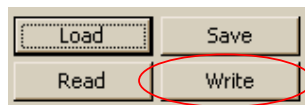
⇒ Click the '**Load**' button. This loads the pre-set configuration values / information.



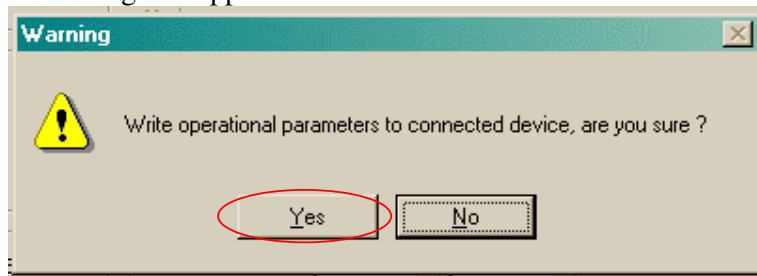
A warning box appears. Click '**Yes**', and the defaults will be loaded.



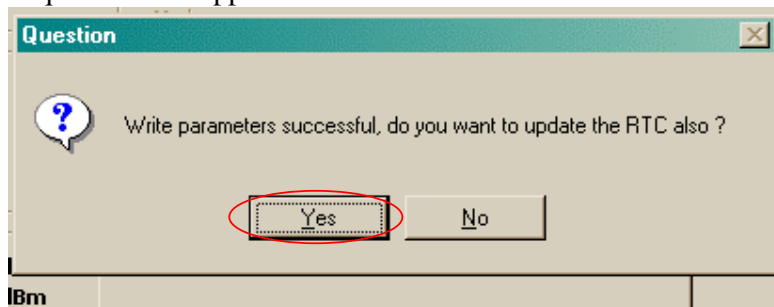
⇒ Click the '**Write**' button. This allows you to send what you have on the screen to the Radio Link V410.




A warning box appears. Click '**Yes**'.

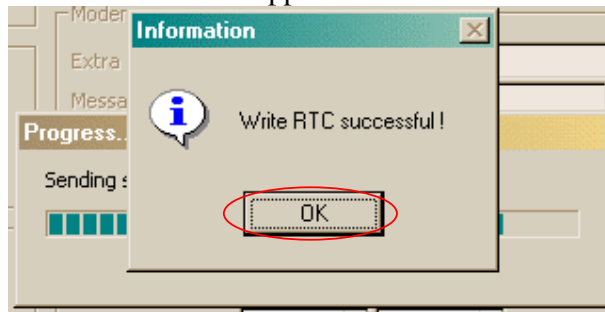


A question box appears. Click '**Yes**'.



DOC. NO.	ISSUE	TITLE	YYYY /MM /DD
CS0035	01	<i>Operation Manual</i>	2007/03/13
		Radio Link V410	Page 13 of 18

An information box appears. Click 'Ok'.



⇒ To save the information, click the 'Save' button **next to the 'Cancel' button** on the bottom right-hand corner of the window.



After that 'Save' button is clicked, you will see the Radio Link V410 number in the list.

Browsing (Terminals) ...

Locate: 358283000189662

Sort Order: Terminal Identifier

Total Records: 3820

Close

Refresh

Insert

Change


Delete

Service

Select

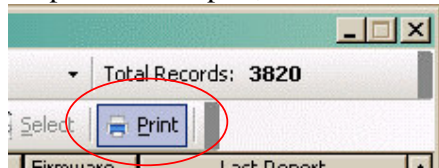
Print

Terminal Identifier	Network Number	Equipment	Area	Firmware	Last Report	
					Date	Day(s)
358283000189662			ANDERBOLT	3.13	8/03/2007	0
358283000189845				3.13	15/01/2007	52
358283000189860	+27836332286			3.13	7/02/2007	29
358283000189902			ANDERBOLT	3.13	15/01/2007	52
358283000189910				3.13	12/01/2007	55
358283000189993				3.13	15/01/2007	52
358283000190116				3.13	9/01/2007	58
358283000190132				3.13	15/01/2007	52
358283000190157			ANDERBOLT	3.13	8/01/2007	59
358283000190181			ANDERBOLT	3.10	31/07/2006	220
358283000190264				3.13	16/01/2007	51
358283000190371			ANDERBOLT	3.13	15/01/2007	52
358283000190462				3.13	12/01/2007	55
358283000190520			ANDERBOLT	3.13	11/01/2007	56
358283000190546				3.13	15/01/2007	52
358283000190587			ANDERBOLT	3.13	15/01/2007	52
358283000190686				3.13	11/01/2007	56
358283000190694				3.13	12/01/2007	55
358283000190710				3.13	2/02/2007	34
358283000190744	+27784534214		UMBILO	3.10	24/11/2006	104
358283000190751				3.13	15/01/2007	52
358283000190785			ANDERBOLT	3.13	8/01/2007	59
358283000190801			BOKSBURG NORTH	3.10	22/09/2006	167
358283000190819				3.13	15/01/2007	52
358283000190850				3.13	12/01/2007	55

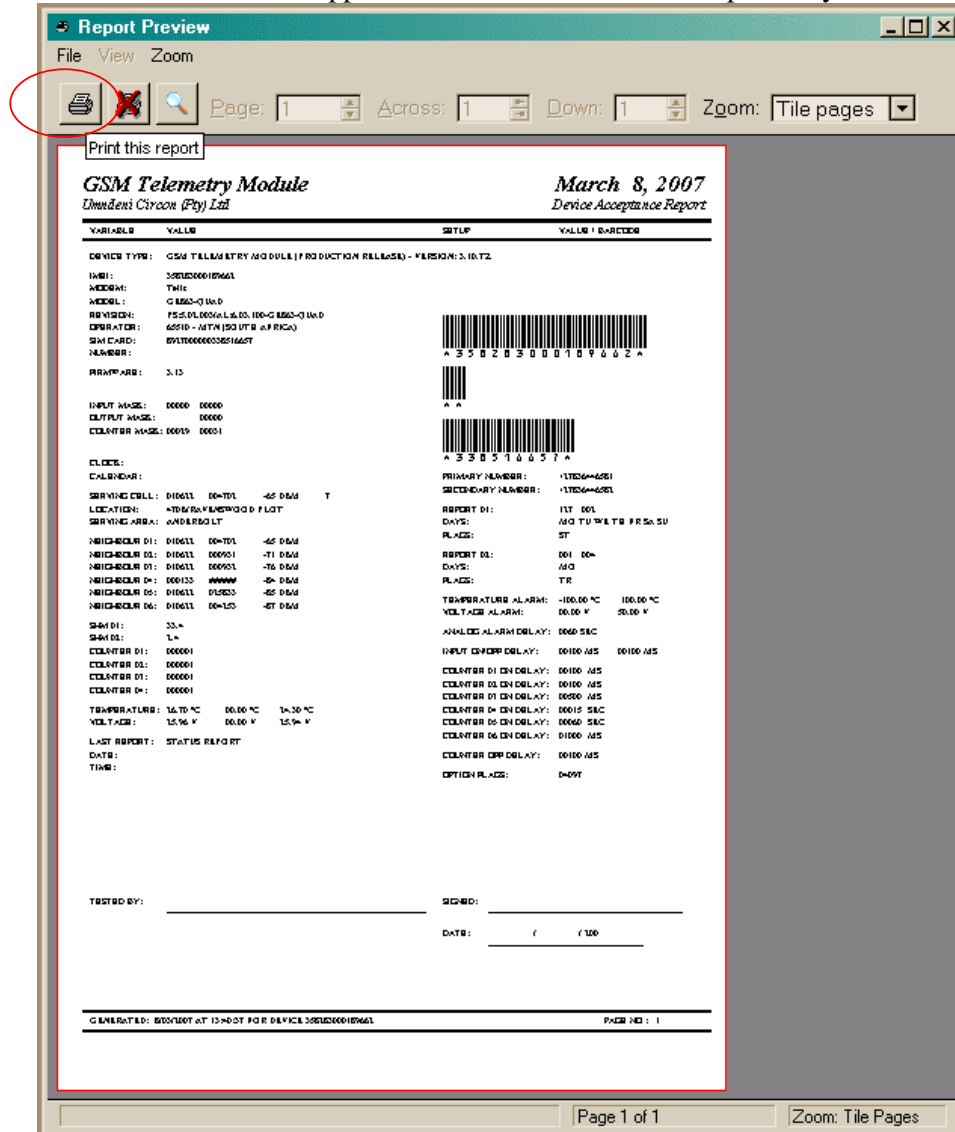
DOC. NO.	ISSUE	TITLE	YYYY /MM /DD
CS0035	01	<i>Operation Manual</i>	2007/03/13
		Radio Link V410	Page 14 of 18


3. Printing Radio Link V410 Test Report.

To print a test report, click the *Print* button.



A 'Print' window will appear. Click the 'Printer' icon to print to your default printer.



DOC. NO.	ISSUE	TITLE	YYYY /MM /DD
CS0035	01	<i>Operation Manual</i>	2007/03/13
		Radio Link V410	Page 15 of 18

Once you click the 'Printer' icon, you will return to the 'Terminals' window.

Browsing (Terminals) ...

Locate: 358283000189662

Sort Order: Terminal Identifier

Total Records: 3820

Close

Refresh

Insert

Change

Delete

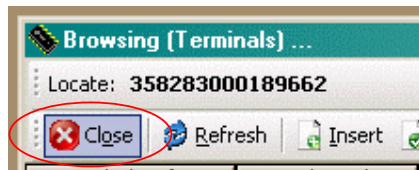
Service

Select

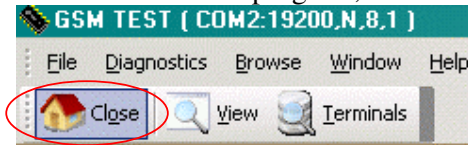
Print


Terminal Identifier	Network Number	Equipment	Area	Firmware	Last Report	
					Date	Day(s)
358283000189662			ANDERBOLT	3.13	8/03/2007	0
358283000189845	+27836332286			3.13	15/01/2007	52
358283000189860				3.13	7/02/2007	29
358283000189902		ANDERBOLT	3.13	15/01/2007	52	
358283000189910			3.13	12/01/2007	55	
358283000189993				3.13	15/01/2007	52
358283000190116				3.13	9/01/2007	58
358283000190132				3.13	15/01/2007	52
358283000190157			ANDERBOLT	3.13	8/01/2007	59
358283000190181			ANDERBOLT	3.10	31/07/2006	220
358283000190264				3.13	16/01/2007	51
358283000190371			ANDERBOLT	3.13	15/01/2007	52
358283000190462				3.13	12/01/2007	55
358283000190520			ANDERBOLT	3.13	11/01/2007	56
358283000190546				3.13	15/01/2007	52
358283000190587			ANDERBOLT	3.13	15/01/2007	52
358283000190686				3.13	11/01/2007	56
358283000190694				3.13	12/01/2007	55
358283000190710				3.13	2/02/2007	34
358283000190744	+27784534214		UMBILO	3.10	24/11/2006	104
358283000190751				3.13	15/01/2007	52
358283000190785			ANDERBOLT	3.13	8/01/2007	59
358283000190801			BOKSBURG NORTH	3.10	22/09/2006	167
358283000190819				3.13	15/01/2007	52
358283000190850				3.13	12/01/2007	55

Click 'Close' to exit this window.



To close the whole program, click 'Close' on the main window and the program will close.



DOC. NO.	ISSUE	TITLE	YYYY /MM /DD
CS0035	01	<i>Operation Manual</i>	2007/03/13
		Radio Link V410	Page 16 of 18

4. General Information & Disclaimers.

This device complies with Part 15 of the FCC Rules. Operation is subject to the following two conditions: (1) this device may not cause harmful interference, and (2) this device must accept any interference received, including interference that may cause undesired operation.


NB! Any changes or modifications made to this device that are not expressly approved by Umndeni Circon (Pty) Ltd. may void the user's authority to operate the equipment. Furthermore, this company reserves the right to revise this publication and to make changes from time to time in the content hereof without obligation of this company to notify any person of such revision or change.

This equipment has been tested and found to comply with the limits for a Class B digital device, pursuant to Part 15 of the FCC Rules. These limits are designed to provide reasonable protection against harmful interference in a residential installation. This equipment generates, uses, and can radiate radio frequency energy and, if not installed and used in accordance with the instructions, may cause harmful interference to radio communications. However, there is no guarantee that interference will not occur in a particular installation. If this equipment does cause harmful interference to radio or television reception, which can be determined by turning the equipment off and on, the user is encouraged to try to correct the interference by 1 or more of the following measures:

- Reorient or relocate the receiving antenna
- Increase the separation between the equipment and receiver
- Connect the equipment into an outlet on a circuit different from that to which the receiver is connected
- Consult the dealer or an experienced radio or television technician for help.

This product emits radio frequency energy, but the radiated output power of this device is far below the FCC radio frequency exposure limits. Nevertheless, the device should be used in such a manner that the potential for human contact with the antenna during normal operation is minimized. The system antenna(s) used for this transmitter must be installed to provide a separation distance of at least 20 cm from all the persons and must not be co-located or operating in conjunction with any other antenna or transmitter. Nevertheless, the device should be used in such a manner that the potential for human contact with the antenna during normal operation is minimized.

Umndeni Circon(Pty)Ltd. declares that the equipment conforms to the R&TTE Directives.

DOC. NO.	ISSUE	TITLE	YYYY /MM /DD
CS0035	01	<i>Operation Manual</i>	2007/03/13
		Radio Link V410	Page 17 of 18


5. Contact Information.

Manufacturer data:

Company name: Umndeni Circon
Address: 136 Main Reef Road, Boksburg North, 1459
Phone: +27 11 898 0240
Fax: +27 11 898 0232
E-mail: perasmus@barloworld-equipment.com
URL: www.umndenicircon.co.za

Contact person: Pieter Erasmus / Chaplain Ratya
Position in the company: Circon Systems' Manager
Phone: +27 11 898 0240
Fax: +27 11 898 0232
e-mail: perasmus@barloworld-equipment.com
cratya@barloworld-equipment.com

THE END

DOC. NO.	ISSUE	TITLE	YYYY /MM /DD
CS0035	01	<i>Operation Manual</i>	2007/03/13
		Radio Link V410	Page 18 of 18