

USER'S MANUAL

USB Bluetooth Dongle

1. Driver Installation

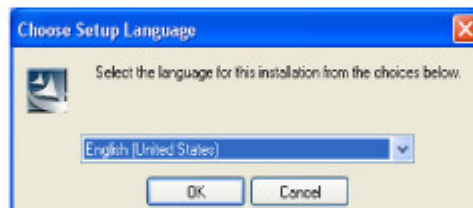
Install IVT BlueSoleil™ Software

(Windows® 98SE 、 Windows® ME 、 Windows® 2000 、 Windows® XP)

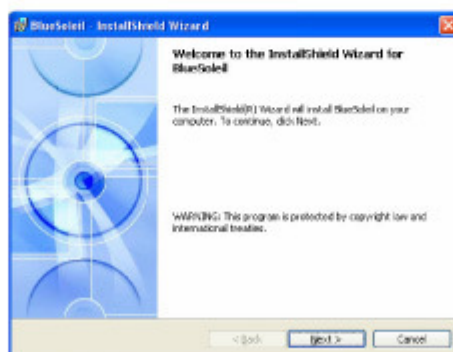
1.1 Power on the computers that you will make sure the USB port is enabled and can working properly.

1.2 Put the driver CD into the CD-ROM and run the driver from the BlueSoleil folder, then Click SETUP.EXE.

1.3 Specify the language that you want to install.



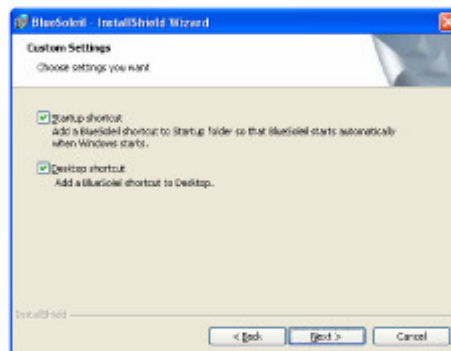
1.4 Click " Next " to continue.



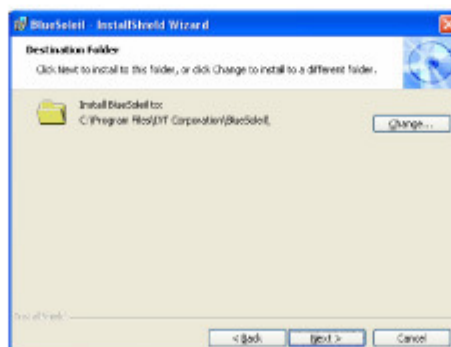
- 1.5 Select "I accept the terms in the license agreement", then Click " Next" to continue.



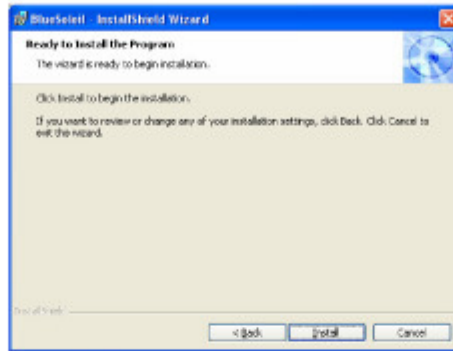
- 1.6 Select "Startup shortcut" and "Desktop shortcut", then Click " Next" to continue.



- 1.7 Windows® will install the driver at "C:\Program Files\IVT Corporation\BlueSoleil" folder. You may change the driver directory that you want to install. Click " Next" to continue.



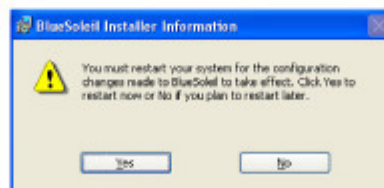
1.8 Click "Install" to continue.



1.9 Click on "Finish" to end this installation.



1.10 Select "Yes" to restart your system.



1.11 When you restart system, you needed to be plug in the Bluetooth USB Dongle into the USB port.

1.12 You will see "BlueSoleil" shortcut in desktop. Double Click "BlueSoleil" shortcut will start BlueSoleil program. *



BlueSoleil

2. Driver Un-Installation

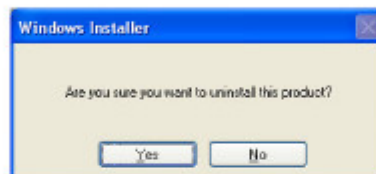
Un-install IVT BlueSoleil™ Software

(Windows® 98SE • Windows® ME • Windows® 2000 • Windows® XP)

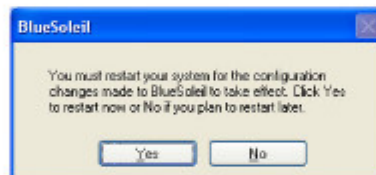
2.1 Choose "Start" - "Settings" - "Control Panel" - "Add or Remove Programs".

2.2 Choose "BlueSoleil" then click "Remove" to un-install.

2.3 Click "Yes" to un-install BlueSoleil.



2.4 Select "Yes" to restart your system.



3. BlueSoleil Application Program

3.1 Start BlueSoleil

- 3.1.1 Start BlueSoleil. Click on the BlueSoleil icon on your desktop, or go to Start | Programs | IVT BlueSoleil | BlueSoleil.

Note: BlueSoleil will detect each insertion or removal of the USB adapter. Alternatively, you can start BlueSoleil before plugging in the USB adapter.

- 3.1.2 The very first time you use BlueSoleil, the Welcome to Bluetooth screen will appear. Assign your Windows system a name and device type, to be shown to other Bluetooth enabled devices. In most cases, you should leave the security setting checked. Click "OK".

3.2 BlueSoleil Environment

3.2.1 Main Window

- a. Hover your mouse over the red ball to display the local device's Bluetooth name and address. *
- b. Click on the red ball to start or stop searching for Bluetooth devices in range.
- c. Right-click on the red ball to display a pop-up menu of related operations (e.g., General Inquiry, My Services, Security, etc.).



Local Bluetooth Device

3.2.2 Remote Bluetooth Devices

Remote devices are other Bluetooth enabled devices that are in the radio range of your local device. BlueSoleil uses different icons to indicated different types of remote devices.

| | | | |
|-------------------|--|------------------|--|
| Personal Computer | | Laptop | |
| Modem | | Mobile Phone | |
| PDA | | LAN Access Point | |
| Keyboard | | Mouse | |
| Micphone | | HiFi Audio | |
| Loud Speaker | | Headset | |
| Printer | | Scanner | |
| Fax | | Camera | |
| Game controller | | Server | |
| Unknown device | | | |

※ Icon Meanings

Remote devices can be in any of three states, which BlueSoleil indicates with different colors.

- White — Idle. The normal state of the device.
- Yellow — Selected. You have selected the device.
- Green — Connected. The device is connected to your computer.

※ Operations

- Single-click on the icon to select.
- Double-click on the icon to search for the services supported by the remote device.
- Right-click on the icon to display a pop-up menu of related operations (e.g., Refresh Devices, Pair Devices, Connect, etc.).

3.2.3 Bluetooth Service Buttons of Remote Device

Service buttons at the top of the Main Window represent a range of Bluetooth services potentially supported by Remote Devices.

| | | | |
|---------|--|------|--|
| PAN | | DUN | |
| SPP | | LAP | |
| FTP | | SYNC | |
| OPP | | HCRP | |
| HID | | FAX | |
| BIP | | AV | |
| Headset | | | |

※Icon Meanings

There are 3 states for the service icons, indicated by different colors.

- White — Idle. The normal state.
- Yellow — Available. The Bluetooth service is available on the selected remote device.
- Green — Connected. The Bluetooth service is active in a connection with the remote device.

※Operations

- Hover your mouse over the service icon to display the name of the service.
- Single-click on the service icon to connect.
- Right-click on the service icon to display a pop-up menu of related operations.

3.2.4 Service Window

The Service Window displays the local Bluetooth services, (i.e., the Bluetooth services supported by BlueSoleil). Use the Service Window to start and stop services, as well as to configure service properties. To access the Service Window, click View | Service Window.

Local Service List

The Local Service List displays all of the Bluetooth services supported by the local computer. Use this screen to start/stop services.

| Services | Icons | Services | Icons |
|---------------|-------|----------|-------|
| PAN | | SPP | |
| OPP | | FTP | |
| SYNC | | LAP | |
| AV | | BIP | |
| Headset AG | | | |

※Icon Meanings

There are 3 states for the local Bluetooth services, indicated by different icon colors.

- White – Idle. The service has not been started.
- Yellow – Started. The local Bluetooth service has been started.
- Green – Connected. Some remote device has connected to the service.

※Operations

- Single-click on the icon to select the service.
- Double-click on the icon to Start/Stop a service.
- Right-click to display a pop-up menu of related operations.

3.2.5 Menus

BlueSoleil contains the following six menus:

3.2.5.1 File Menu

- a. Hide --- Hide the BlueSoleil window. Connections can still run when the window is hidden.
- b. Always on Top --- Keep the BlueSoleil window always on top.
- c. Exit --- Exit BlueSoleil.

You can also exit BlueSoleil by right-clicking on the task tray icon at the bottom of your screen. In the pop-up menu, click Exit.

3.2.5.2 View Menu

- a. Main Window --- Show the BlueSoleil Main Window.
- b. Service Window --- Show the BlueSoleil Service Window.
- c. Arrange Devices --- Arrange remote devices by Device Name, Device Address, or Device Type
- d. Refresh Devices --- Refresh the list of remote devices detected by BlueSoleil.

※ Note: If you select Refresh Devices, the list of previously detected devices will not be cleared. To initiate a new device search that will first clear the list, press F5.

3.2.5.3 My Bluetooth Menu

- a. Bluetooth Device Inquiry --- Search for other Bluetooth enabled devices in range.
- b. Bluetooth Service Browsing --- Browse for the services of the selected remote device.
- c. Security --- Configure the security settings of the local device (e.g., passkey requirements, data encryption, etc.).
- d. Device Properties --- Configure the properties of the local device (e.g., device name, accessibility, etc.).

3.2.5.4 My Services Menu

- a. Start Service --- Start the selected local Bluetooth service.
- b. Stop Service --- Stop the selected local Bluetooth service.
- c. Status --- View the status of the selected local Bluetooth service.

- d. Properties --- Configure the properties of the local Bluetooth services (e.g., automatic connections, shared file locations, etc.).

3.2.5.5 Tools Menu

- a. Find Device --- Click to find a device, by either of two search criteria:
 - (1) By Bluetooth Device Address:
Enter a Bluetooth device address, in standard format (xx:xx:xx:xx:xx:xx), and click on the Find button. The device with the specified address will appear highlighted in the Main Window.
 - (2) By Name:
Check the By Name box, enter the Name of the device, and click on the Find button. The device with the specified name will appear highlighted in the Main Window.
- b. Add New Device --- Add a remote device by entering its Bluetooth device address.
- c. Add Device From History --- Add a remote device from the history list.
Add: Add the selected device.
Delete: Clear the selected device from the history list.

d. Configurations

- (1) Quick Connect -- If desired, assign a remote device to automatically connect with a Bluetooth serial port whenever an application opens the specified port.

Assign: Assign a device to the selected port.
Remove: Remove the Auto-Connection device assignment for the selected port.
- (2) Unplug HID -- Remove Human Interface Devices from BlueSoleil.
Unplug: Unplug the selected HID device.

When you first connect the HID device to your computer, BlueSoleil sets up the devices so that they will automatically reconnect in case the connection is ever broken. After you unplug an HID device, it will no longer automatically reconnect to your computer.

- e. My Bluetooth Device — Advanced hardware configuration, recommended for advanced users only. Please refer to 4.2 Hardware Configuration for more details.

3.2.5.6 Help Menu

Contents and Index — Access BlueSoleil Online Help.

About BlueSoleil — Information about your version of BlueSoleil.

3.3 Search for Other Bluetooth Enabled Devices

Before it can connect, your computer must first detect other Bluetooth enabled devices in range.

Initiate a Device Search

- 3.3.1 Make sure that the Bluetooth enabled device you wish to connect to is turned on, with sufficient battery power, and set in discoverable mode. Have any necessary passkeys ready. If necessary, you may also need to enable the service you want to use on the remote device. Refer to the remote device's user documentation for instructions.

If you haven't done so already, you may also want to assign the device a Bluetooth name. Refer to the device's user documentation for instructions.

- 3.3.2 In the Main Window, click on the red ball to start the device search. Alternatively, you can click My Bluetooth | My Device Inquiry or View | Refresh Devices or press F5.

- 3.3.3 After a few seconds, an icon will appear around the center ball for each Bluetooth enabled device detected within the radio range.

Note:

- fi The Main Window can display only eight discovered devices at a time. If BlueSoleil discovered more than eight devices, use the scroll bar to view the remaining devices discovered by BlueSoleil.
- fi To sort the devices by device name, device address, or device type, click View | Arrange Devices.

Wait several seconds until BlueSoleil reports the name of each device.

If the device you want is not listed, make sure that the device is turned on and discoverable and try searching again. You have multiple options for starting another search:

- If you start another search by double-clicking on the red ball or clicking My Bluetooth | My Device Inquiry or View | Refresh Devices, then the list of previously detected devices will not be cleared.
- If you start another search by pressing F5, then the list of previously detected devices will be cleared.

3.4 Establish Connection

Normally, a connection is initiated from the client. Check the chart in Chapter 1 to verify which device role BlueSoleil supports for the service you wish to use.

3.4.1 Start the Service

3.4.1.1 Access the Service Window. Click View | Service Window.

3.4.1.2 If the icon for a service is highlighted (yellow), then the service has already been started. If the icon is white, then you need to start the service in order to use it. Right-click the icon. In the pop-up menu, select Start Service. The icon should now be highlighted (yellow). Serial Port icons will also report which COM port is assigned to them.

3.4.1.3 After you have started the service in BlueSoleil, now you are ready to initiate the connection from the remote device. For instructions, refer to the user documentation for the remote device.

3.4.2 Initiate the Connection

If you would like to use your computer as a client in a Bluetooth connection, make sure that you have started (enabled) the service on the remote device. Otherwise, BlueSoleil will not be able to discover the service and connect to it.

- 3.4.2.1 Return to the Main Window. Click View | Main Window.
- 3.4.2.2 Double-click on the icon for the device you wish to connect to. BlueSoleil will begin to search for information about which services the device supports.
- 3.4.2.3 After the search, icons will be highlighted (yellow) at the top of the BlueSoleil Main Window for services that are supported by the device. Verify that the service you want to use is supported.
- 3.4.2.4 Right-click on the device icon. In the pop-up menu, click Connect, then select the service. BlueSoleil will start the connection. Depending on the security settings of each device, you may need to enter the same passkey on each device in order to bond the two devices.
- 3.4.2.5 A screen may appear asking if you want to set up automatic connections. Click Yes or No.
- 3.4.2.6 If you are connecting to a phone, your phone may ask if you want to ask the BlueSoleil computer to your device list. Enter Yes and enter a passkey.
- 3.4.2.7 When the devices have successfully connected, the device icon in the Main Window will turn green, and a green line will appear between the red ball and the device icon. A red dot will travel along the green line from the client to the server. A signal strength icon will also appear next to the device icon.
The BlueSoleil icon in the task tray will also turn green to indicate an active connection.
Note: A red check mark will appear next to the name of any device that you have previously paired with your computer.
- 3.4.2.8 Depending on which services you are using, additional screens may appear, and/or you may need to configure additional connection settings (e.g., user name, password, COM port number, etc.). Refer to the instructions in Chapter 3 for your specific service. After configuring the appropriate connection settings, you should be ready to use your application.
- 3.4.2.9 To end a connection, in the Main Window, right-click on the icon for a connected device. In the pop-up menu, click Disconnect.

Note: You can only disconnect this way if your computer is acting as a client device. If your computer is acting as a server device, then you can disconnect in BlueSoleil by clicking View | Service Window, then right-clicking on the service icon. In the pop-up menu, click Stop Service. Alternatively, you can disconnect from the remote device.

3.5 Bluetooth Security

To modify your connection's security settings, click My Bluetooth | Security.
BlueSoleil offers three security levels:

3.5.1 Start the Service

Low (Security Mode 1, Non-secure)

No security procedure is needed for connections.

3.5.2 Medium (Security Mode 2, Service level enforced security)

Authentication or Authorization is requested when a specific service is accessed by other Bluetooth enabled devices. If two devices are connecting for the first time, or if two devices do not have a trusted relationship, then the same passkey must be provided on both sides to complete the Authentication. This mode allows you to assign different access rights for each service supported by the server device.

3.5.3 High (Security Mode 3, Link level enforced security)

If either of two devices is in Mode 3, Authentication is requested whenever a link connection is initiated between two Bluetooth enabled devices. The passkey must be provided on both sides to complete Authentication.

Note: In Security Mode 2, the user can add each authenticated device into a trusted device list to expedite future connections.



3.6 Federal Communications Commission (FCC) Statement

This device complies with Part 15 of FCC rules. Operation is subject to the following two conditions:

1. this device may not cause interference and
2. this device must accept any interference, including interference that may cause undesired operation of the device.

This equipment has been tested and found to comply with the limits for a Class B digital device, pursuant to part 15 of the FCC rules. These limits are designed to provide reasonable protection against harmful interference in a residential installation. This equipment generates, uses and can radiate radio frequency energy and, if not installed and used in accordance with the instructions, may cause harmful interference to radio communications. However, there is no guarantee that interference will not occur in a particular installation. If this equipment does cause harmful interference to radio or television reception, which can be determined by turning the equipment off and on, the user is encouraged to try to correct the interference by one or more of the following measures:

1. Reorient or relocate the receiving antenna.
2. Increase the separation between the equipment and receiver.
3. Connect the equipment into an outlet on a circuit different from that to which the receiver is connected.
4. Consult the dealer or an experienced radio/TV technician for help.

Caution

1. This equipment complies with FCC radiation exposure limits set forth for an uncontrolled environment.
2. This transmitter must not be co-located or operating in conjunction with any other antenna or transmitter.
3. Any changes or modifications not expressly approved by the party responsible for compliance could void the user's authority to operate this equipment.