

SKYTEX

SX-E760



Windows® CE Edition

Software User Guide

Table of Contents

Table of Contents	1
Preface	2
Safety precautions	2
1 Function Description	3
2 WirelessBook Description	4
2.1 Outlook Description	4
2.2 Desktop Description	5
3 Battery Charging	5
4 Basic Operation	6
4.1 Power On and Off	6
4.2 Start Applications	7
4.3 Keyboard Introduction	7
4.4 Touch Pad	8
4.5 How to use SD Card	8
4.6 USB Device	9
4.7 Connecting to the internet by Ethernet	9
4.8 Connecting to the internet by Wi-Fi	11
4.9 Connecting to the internet by 3G dongle	12
5 Application	13
5.1 Internet Explorer	13
5.2 Office Software	13
5.3 Instant Messenger	13
5.4 Multimedia	15
5.5 Game	18
5.6 Others	18
6 System Setting	20
6.1 Time Setting	20
6.2 Display	20
6.3 Input Panel	21
6.4 Internet Options	21
6.5 Keyboard	22
6.6 Mouse	22
6.7 Network and Dial-up Connections	23
6.8 Owner	23
6.9 Password Setting	24
6.10 Power	24
6.11 Regional Settings	25
6.12 Remove Programs	25
6.13 Storage Manager	26
6.14 System	26
6.15 Volume and Sounds	27
6.16 System Reset	27

Preface

The purpose of this document is mainly to introduce how to use WM8505 WirelessBook. This document serves as a quick user guide for the people who use WM8505 WirelessBook to know how to start it.

Safety precautions

The following safety precautions will increase the life of the NETBOOK.

Follow all precautions and instructions. Except as described in this manual, refer all servicing to qualified personnel. Do not use damaged power cords, accessories, or other peripherals. Do not use strong solvents such as thinners, benzene, or other chemicals on or near the surface.

- Disconnect the AC power and remove the battery packs before cleaning. Wipe the NETBOOK using a clean cellulose sponge or chamois cloth dampened with a solution of nonabrasive detergent and a few drops of warm water and remove any extra moisture with a dry cloth.
- The instructions for use shall state that the apparatus shall not be exposed to dripping or splashing and that no objects filled with liquids, such as vases, shall be placed on the apparatus.
- CAUTION: Danger of explosion if battery is incorrectly replaced. Replace only with the same or equivalent type.
- Where the MAINS plug or an appliance coupler is used as the disconnect device, the disconnect device shall remain readily operable.
- Where an all-pole MAINS SWITCH is used as the disconnect device, the location on the apparatus and the function of the switch shall be described, and the switch shall remain readily operable.
- DO NOT place on uneven or unstable work surfaces. Seek servicing if the casing has been damaged.
- DO NOT leave the NETBOOK on your lap or any part of the body to prevent discomfort or injury from heat exposure.
- DO NOT press or touch the display panel. Do not place together with small items that may scratch or enter the NETBOOK.
- DO NOT place or drop objects on top and do not shove any foreign objects into the NETBOOK.
- DO NOT expose to strong magnetic or electrical fields.
- DO NOT expose to dirty or dusty environments. Do not operate during a gas leak.
- DO NOT carry or cover a NETBOOK that is powered on with any materials that will reduce air circulation such as a carrying bag.
- SAFE TEMP: This NETBOOK should only be used in environments with ambient temperatures between 5°C and 40°C.
- INPUT RATING: Refer to the rating label on the rear side of the NETBOOK and be sure that your power adapter complies with the rating.

Airplane Precautions

Contact your airline if you want to use the NETBOOK on the airplane. Most airlines have restrictions for using electronic devices. Most airline allow electronic use only between but not during take offs and landings.

This device complies with Part 15 of the FCC Rules. Operation is subject to the following two conditions: (1) this device may not cause harmful interference, and (2) this device must accept any interference received, including interference that may cause undesired operation.

Changes or modifications not expressly approved by the party responsible for compliance could void the user's authority to operate the equipment.

NOTE: This equipment has been tested and found to comply with the limits for a Class B digital device, pursuant to Part 15 of the FCC Rules. These limits are designed to provide reasonable protection against harmful interference in a residential installation. This equipment generates, uses and can radiate radio frequency energy and, if not installed and used in accordance with the instructions, may cause harmful interference to radio communications. However, there is no guarantee that interference will not occur in a particular installation.

If this equipment does cause harmful interference to radio or television reception, which can be determined by turning the equipment off and on, the user is encouraged to try to correct the interference by one or more of the following measures:

- Reorient or relocate the receiving antenna.
- Increase the separation between the equipment and receiver.
- Connect the equipment into an outlet on a circuit different from that to which the receiver is connected.
- Consult the dealer or an experienced radio/TV technician for help.

RF warning statement:

The device has been evaluated to meet general RF exposure requirement. The device can be used in portable exposure condition without restriction.

1 Function Description

CPU

WM8505 processor embedded 300MHz ARM926EJ-S.

Display

LCD 7" WVGA (800x480) digital TFT.

Video

Embedded M-JPEG hardware decoder.

Video Format support: MPEG1/2/4, XViD, DiVX4, H263, M-JPEG, Windows Media Video

Music

Support: MP3, WMA, AAC.

Resolution

800x480.

Memory

DDR2 SDRAM: 128MB, and speed up to 667MHz.

Nand Flash:2GB

Port

3 X USB 2.0 ports.

1 X RJ-45 port.

1 X SD card.

1 X Ear phone jack.

1 X Microphone jack.

1 X Power port.

User interface

80 key keyboard

Touchpad

Speaker

Power key

WI-FI

Support 802.11b/g.

Support WPA/AES.

Operating System

WinCE 6.0

Application Software

Internet Explorer, Picture viewer, Word Pad, Excel, FoxitReader, Media Player,Recorder, Web Video, MSN, WinRAR, Calculator, etc.

Battery

2100mA/H Li-on battery.

Adapter

9V DC

2 WirelessBook Description

2.1 Outlook Description

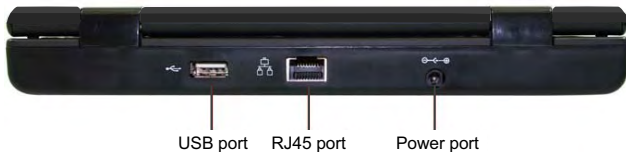
Front View



LED status indicators from Left to Right:

- ① Battery Charge status
- ② No effect
- ③ Power on / off
- ④ Num Lock status
- ⑤ Caps Lock status
- ⑥ Scroll Lock status

Back View



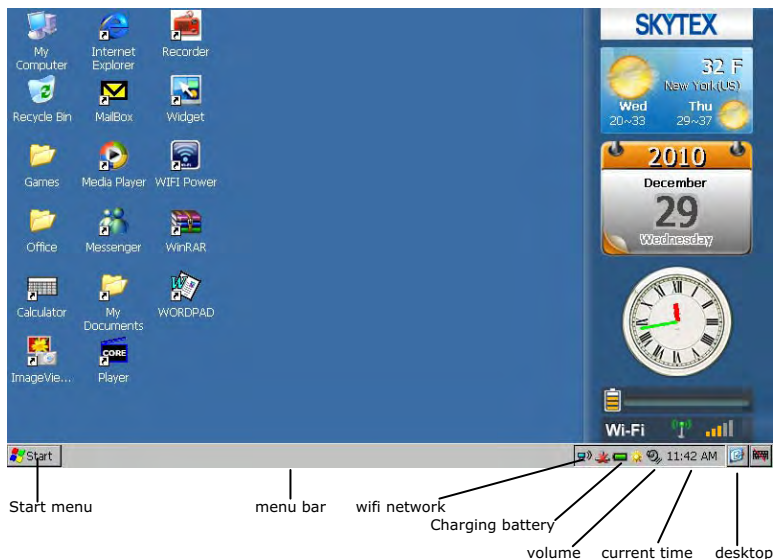
Left side View



Right side View



2.2 Desktop Description



3 Battery Charging

1) Battery Charging for WirelessBook

WirelessBook has an internal charging battery. We suggest to charge up the battery when the battery power is low.

2) Way to Charging Battery

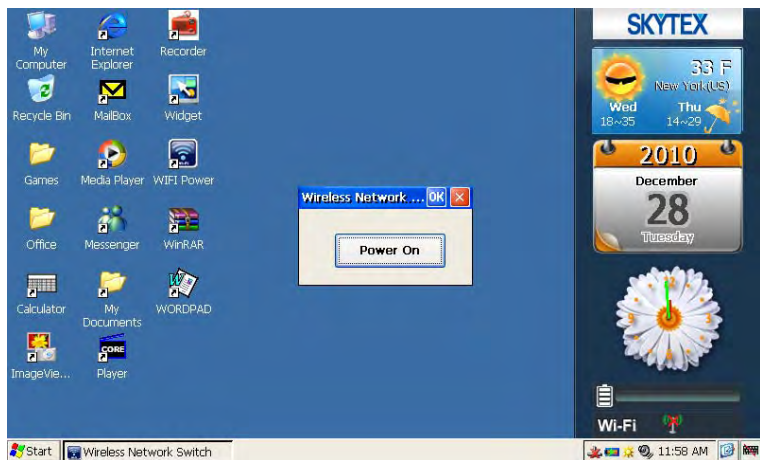
1. Plug in the Power adaptor to Power adaptor port of WirelessBook, Battery charge LED will light up. Charging procedure will be completed once the LED turns off
2. During Battery Charging, user can operate WirelessBook.

Note:

The charging time will be longer when operating and charging at same time.

3) Checking Battery Level

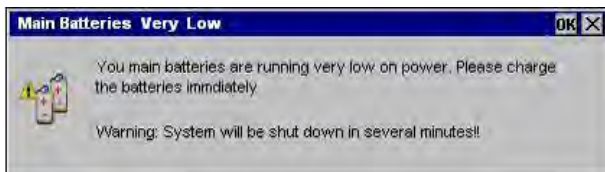
You can double click icon  in menu bar to check the battery level as the window shown below.



You also can check the status by click the "Start" - "Setting"- "Control Panel", then double click "Power" icon to open power properties window.

Status	Description
Good	Good battery level
Low	Low battery level, need to have charging
Very low	Low battery level, must have charging

Once battery is in low level condition, the display will show "Main Batteries very low" window as below, WirelessBook will be automatically shutdown in a few minutes.



4 Basic Operation

4.1 Power On and Off

Open the WirelessBook and power on the machine by pressing the button.




1. Power On: When power adaptor is plugged, User can press Power button to enter the Window Platform.
2. Power Off:
 - a) User can long press (2 seconds) power button, after popped up a dialog box, and click "Yes" to switch off.
 - b) Power off through "Start" Menu selection.
 - c) User can long press (8 seconds) power button to shutdown the machine.

4.2 Start Applications

Applications can be started either by clicking on the icon of the relative application on the desktop, or by clicking the "Start" button and selecting the required program from the "Programs" menu.

Note:











Once several applications have been started, the icon  can be used to minimize all the program windows displayed.

It is suggested that not to start too many applications at the same time, or have too many Internet Explorer windows opened together. Otherwise the system may slow down.

4.3 Keyboard Introduction

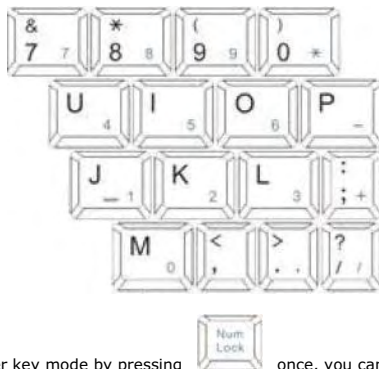
The WirelessBook uses an 80 keys standard US keyboard layout.

There are a number of function keys.

		Page Up
		Home
		Page Down
		End
		F11

Fn	F2 F12	F12
Fn	F10 Scroll Lock	Scroll Lock

Number keys



To switch to the number key mode by pressing  once, you can enter the number by corresponding number key as shown below. Press this key again to switch to the normal mode.

4.4 Touch Pad

Touch pad is a pointer device which can work as a normal mouse. The pad can feel the finger movement and control the pointer. The function of two buttons at the left and right side of the pad are same as buttons on a normal mouse.

Note:

Please don't put object on the pad surface which can make it scratched or compressed.

4.5 How to use SD Card

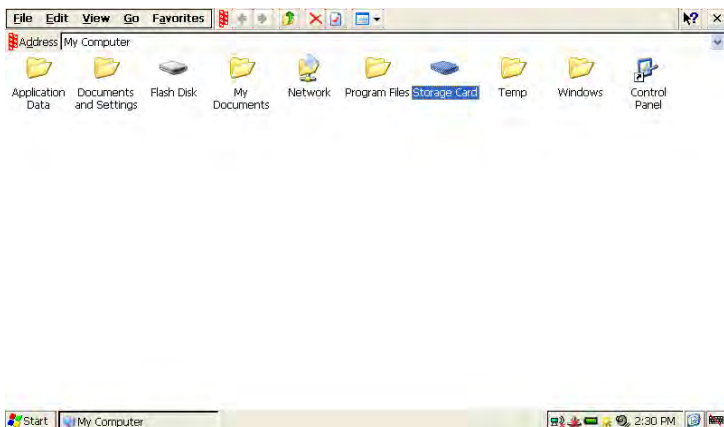
1) Insert card:

Insert SD card (Brand name side face down) to the Card slot as shown.



Use finger to put the card into the slot until "click" sound heard.

2) Browsing files in card:



Double Click "My Computer" on the desktop.



Double click Storage Card to browse Card.

3) Remove SD card:

Close all applications or documents which have been opened from the card.

Press the card lightly. It will be ejected partly

Pull the card out.

Note:

1. Insert card to the right position. Otherwise it will damage the card.
2. Once the card has been locked, it can not be formatted or written.
3. Don't insert and remove the card repeatedly in a short time. It may cause the card damaged.
4. Suggest using major brands of SD card to avoid any incompatibility.

4.6 USB Device

WirelessBook has 3 USB host ports which can be connected to USB device such as U-disk, keyboard and mouse, etc.

4.7 Connecting to the internet by Ethernet

1) Connect the WirelessBook to LAN

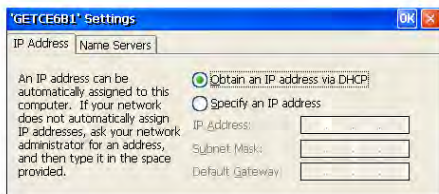
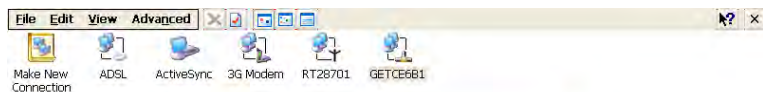




2) Set up the Ethernet connection

1. Click "Start"->"Setting"->"Network and Dial-up Connections".



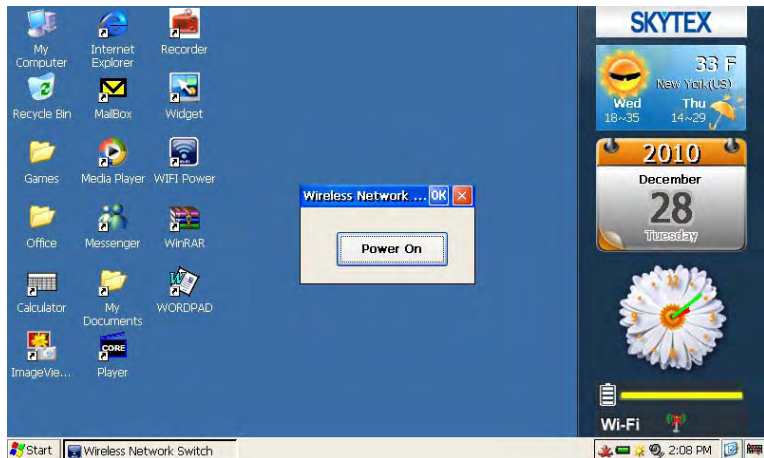
2. Double click "GETCE681".



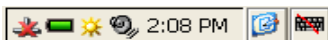
3. Select "Obtain an IP address via DHCP".
4. Click "OK" to save and exit.
5. User can also select "Specify an IP address" to set the address manually.
6. After connected to LAN, icon  in the task tray will be changed to .

4.8 Connecting to the internet by Wi-Fi

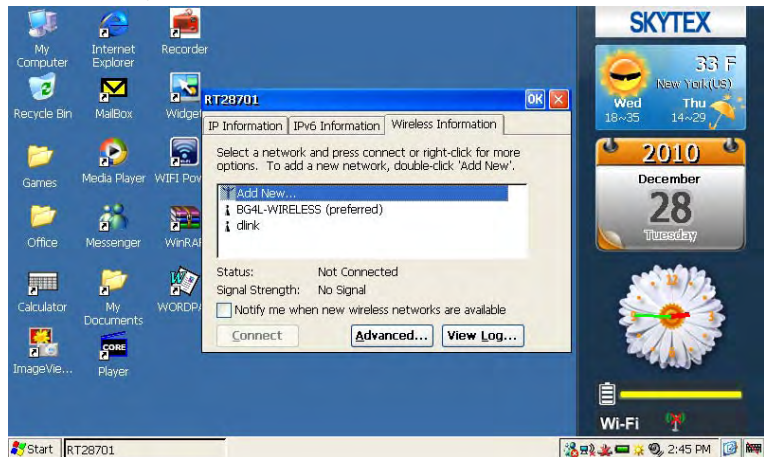
1. Double click "WIFI Power" in the desktop, and then click "Power On" in the "Wireless Network Switch" window.



2. The icon of Wi-Fi connection (circled in red on this photo) is turned up in the menu bar of WirelessBook.



3. Make a double click with the left button next to your touchpad.
4. Click on the tab "Wireless Network Information".
5. All the name of your modem / router / internet box will be listed in the frame.



6. Select the name of your modem with the left button next to your touchpad.
7. If network doesn't have password, you can click "Connect" or double click the left button next to your touchpad to start the connection.

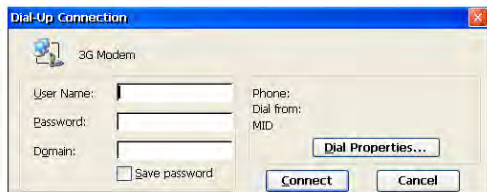
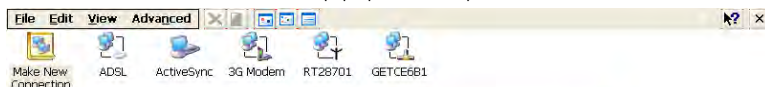
If the security encryption is enabled on the wireless network you are connecting to, double click the left button next to your touchpad will show "Wireless Network properties" as below.



8. Input the Password in "Network Key" box.
9. After confirmed by clicking "OK", it will go back to "RT28701" interface. Click "Connect" to start connecting.
10. If the connection is successful, the menu bar icon will change from Disconnect to Connect.

4.9 Connecting to the internet by 3G dongle

1. Install 3G driver.
2. Insert 3G dongle to WirelessBook's USB port.
3. Select "Start" -> "Settings" -> "Network and Dial-up Connections".
4. Double click "Modem Connection" will pop up the "Dial-up Connection" window.



5. Input the User Name, Password, Domain, and Apn in the related input field. We just need to input "CMWWAP" in "Apn" input field, then click "Connect".
6. When the status in "Modem Connection Status" changes to "Connected", you can connect Internet by the 3G dongle.

5 Application

5.1 Internet Explorer

You can make use of IE to obtain information from internet web, music download, etc.

1. Click  on desktop to open Web Browser.

2. Enter web address  for the website you wish to browse.



3. Select File -> Close or press (Alt+F4) or directly click  can close the Web Browsing window.

4. Select File -> "Save page..." can save up web page to Nand Flash directory.

5.2 Office Software

WM8505 WirelessBook includes many word processors. They can process PDF, Word, Excel, many other document formats.

1) Word Processor

WordPad and Text Maker are two of simple word processor, which consists of simple word editing function. They can process many word format such as *.pwd, *.rtf, *.txt, *.pwt, *.doc, *.dot. Double click the icon to run.

2) Spread Sheet

Excel and Plan Maker are two types of spread sheet processors. They can perform *.xls file view and editing function. Double click the icon to run.

3) Text Reader

WirelessBook contains document reader such as Presentations and Foxit Reader, and support most common office document.

Presentations can open document in PPT or PPS format, and perform zoom in / out function.

Foxit Reader can read PDF format file.

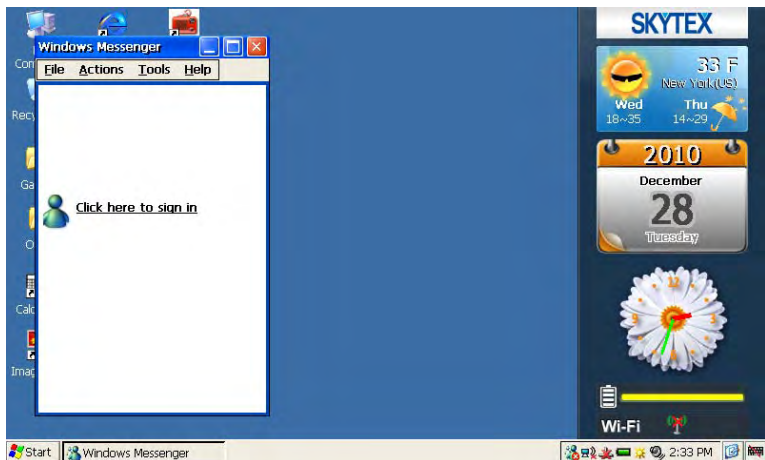
Double click the icon to run.

5.3 Instant Messenger

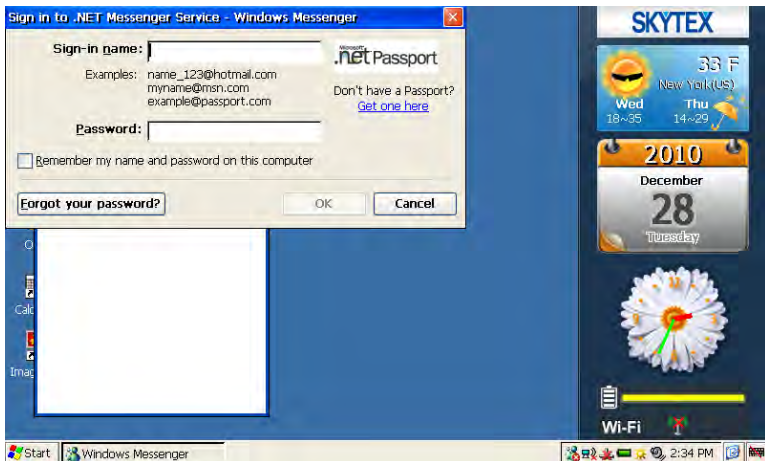
WM8505 WirelessBook has three kinds of communication tools –Internet Messenger and Skype. We can use them chatting, sharing files with friends all over the world.

1) Internet Messenger

1. Double click "Messenger" icon to open the application as shown below.



2. Click "Click here to sign in" as shown below.
3. The use of the window ".NET Messaging Service" to talk with Hotmail contacts; use the "SIP Communications Service" to communicate with colleagues. Select the ".NET Messaging Service", and then click OK.
4. Enter your account user name and password in the relevant boxes as shown below.

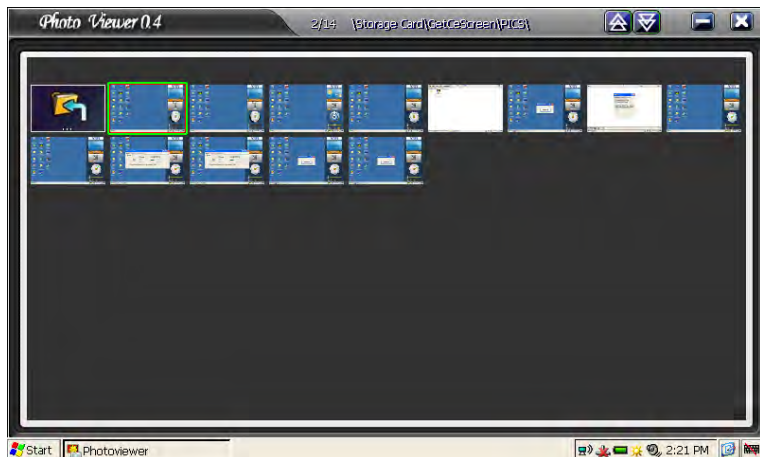


5. You can contact with your friends after login is successful.

5.4 Multimedia

1) Image Viewer

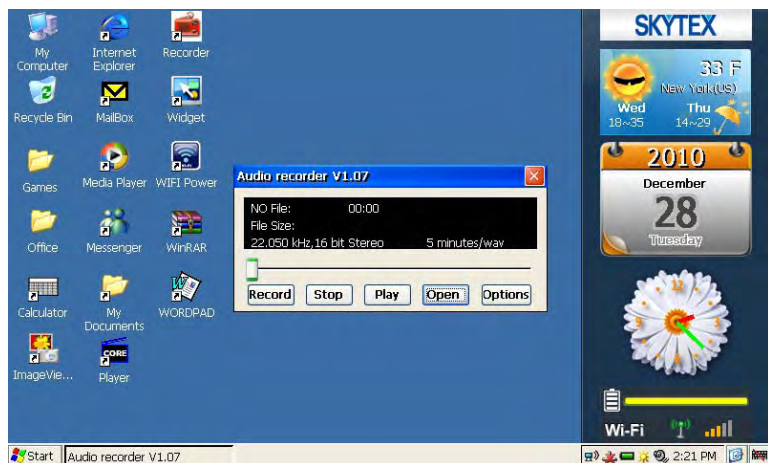
Image Viewer is a kind of picture view tools, it have browsing, zooming and simple picture editing function. Double click "Image Viewer" icon and it will open as shown below. Select the folder in the top of the window, the image files in this folder will be shown as thumbnails mode in the bottom of the window.



Double clicking the thumbnail, you can see the picture full screen. Through the "View" and the "Tools" menu can do some simple operations.

2) Sound Record

Double click "recorder" icon as shown below.

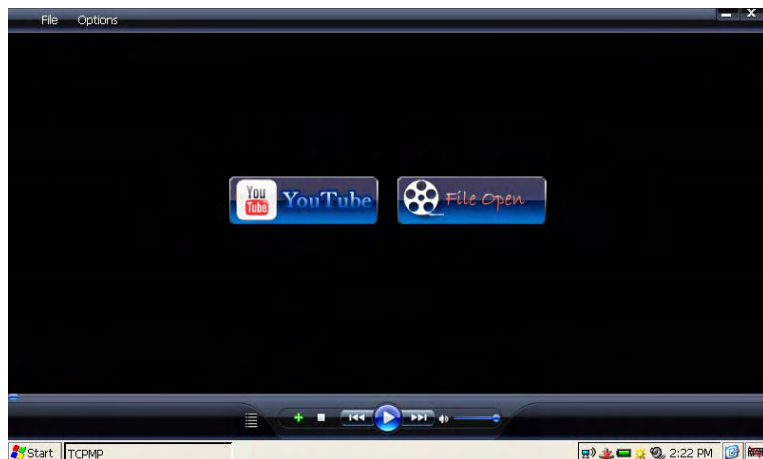


Click "Record" icon, save the recorded file in Nand Flash, then it will change to record status. Use the microphone On-board or an external microphone to record. Click "Stop" to stop recording, "Play" to play recorded file, "Open" to open the recorded file saved in WirelessBook. Each audio file is limited to 5 minutes.

3) Multimedia Player--TCPMP

TCPMP support player music and video in different file format, such as mp3, wma of audio, AVI, mp4 of video.

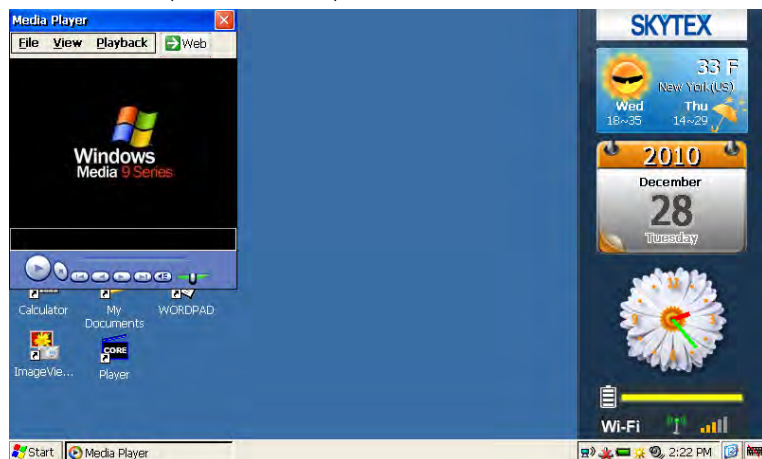
Double click "Player" icon to open the media player as shown below.



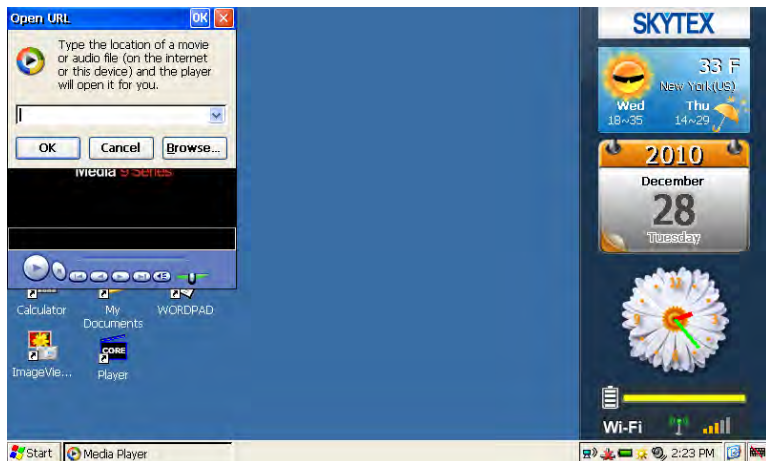
Select "File" -> "Open file..." -> selected file or double click the selected file can open the file. Click the Play/Pause, Stop, Previous, Next, and Volume icon can do related operation.

4) Multimedia Player--Media Player

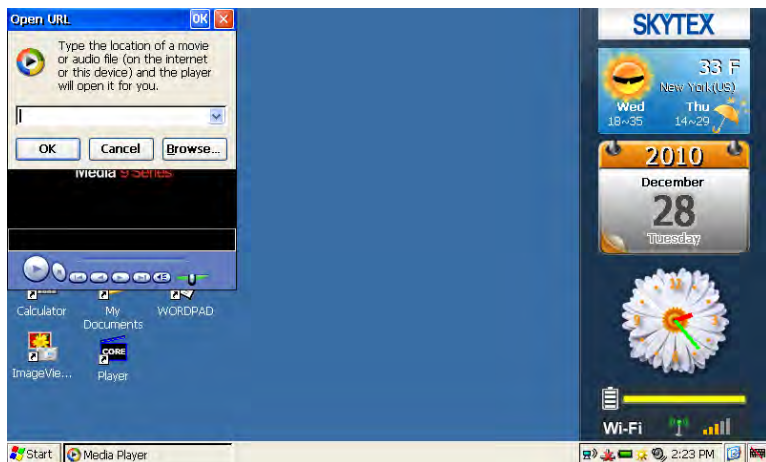
Double click "Media Player" to run Media Player.



Click "File"->"Open", click "Browse..." in pop-up window to select file to play.



Click "OK", the selected file start to playing.



Window is automatically minimized when music playing.

5.5 Game

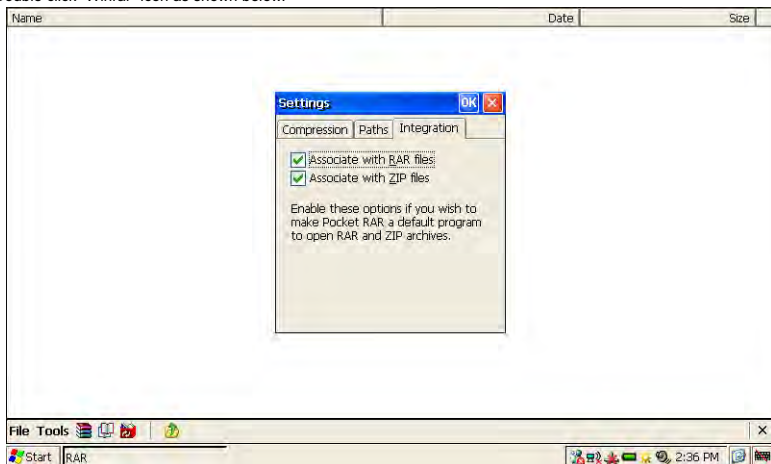
WM8505 WirelessBook supported games are: Solitaire, Preecell and paopaolong. Double-click the name of the game will enter game screen to run it.

5.6 Others

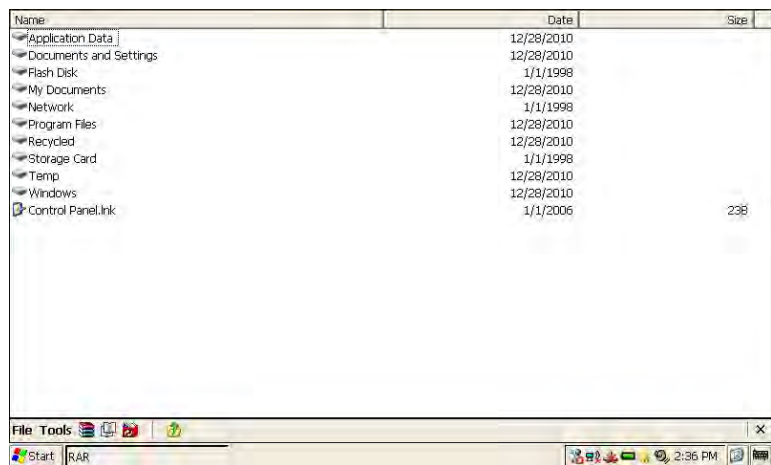
1) File Compression-Winrar

Winrar is a program of creating, managing and controlling of compressed and decompressed file. It can support RAR and ZIP format files.

Double click "Winrar" icon as shown below.



It will pop up "Settings" window when it first running. Select "OK" to view document.



Select file, then press "Winrar" icon in the menu to compress the file. Select the compressed package file can browse the contents inside. Double click the file in compressed package can be extract and view directly.

2) Calculator

Double click “calculator” icon will open science calculator as shown below.



Operation is the same as the scientific calculator.

3) Widget

Double click “Widget” icon will open science calculator as shown below.



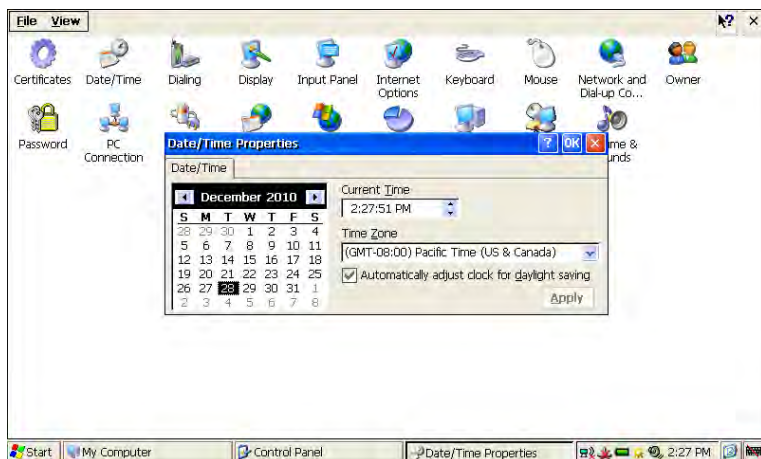
You can choose whether to display an icon on the desktop. Click the icon to select or cancel the desktop display.

6 System Setting

Systems setting allow you to manage many systems settings like system clock, date, sound, power etc. Settings are described below.

6.1 Time Setting

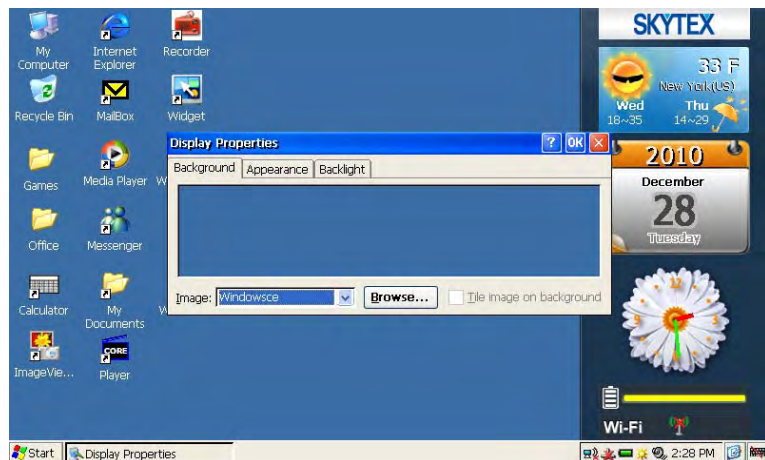
To modify Date, Time, and Regional time zone information, double clicks the time zone in Menu bar. Date/Time Properties dialog box will appear as shown below.



6.2 Display

To change the wallpaper background, default appearance and backlight settings, move the pointer on desktop background and press the right button, the "Display Properties" window will appear as shown below.

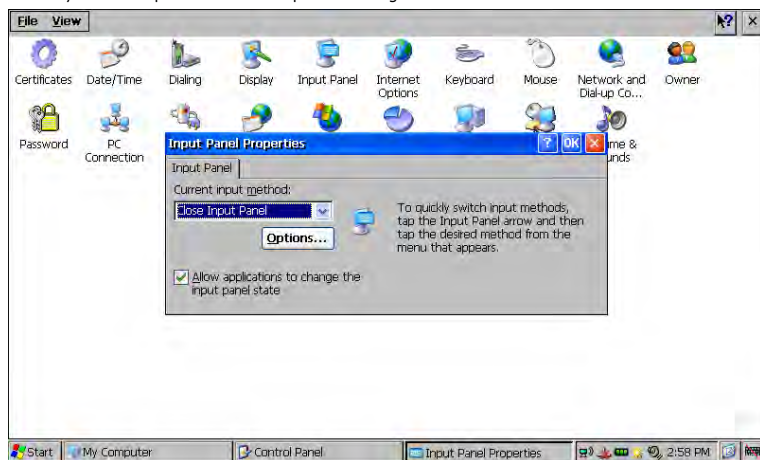
Click "Start" -> click "Setting"->click "Control Panel", then double click "Display" can also open the window as below.



User can change the background wallpaper by selecting a different image from the pull down image list or by clicking the "Browser" button and select an image file to use. Appearance and backlight level can also be set from the relevant tabs within the Display Properties window. Please be noted that wallpaper picture should be stored in "Nand Flash" for the setting.

6.3 Input Panel

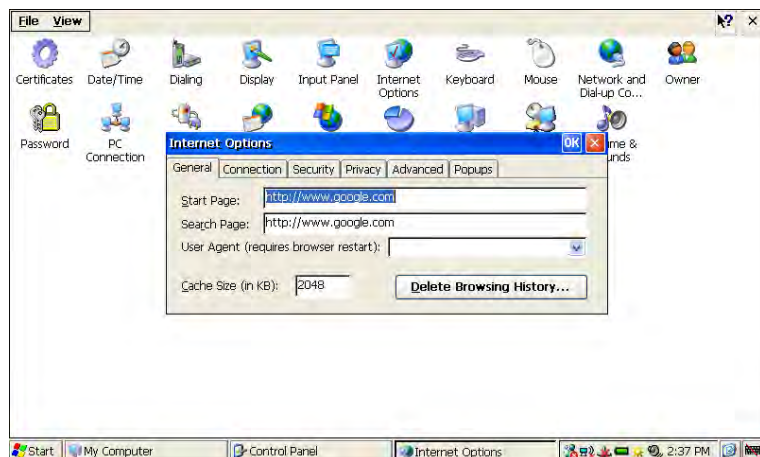
Click "Start" -> click "Setting"->click "Control Panel", then double click "Input Panel" icon. This setting can modify current input method and options setting.



6.4 Internet Options

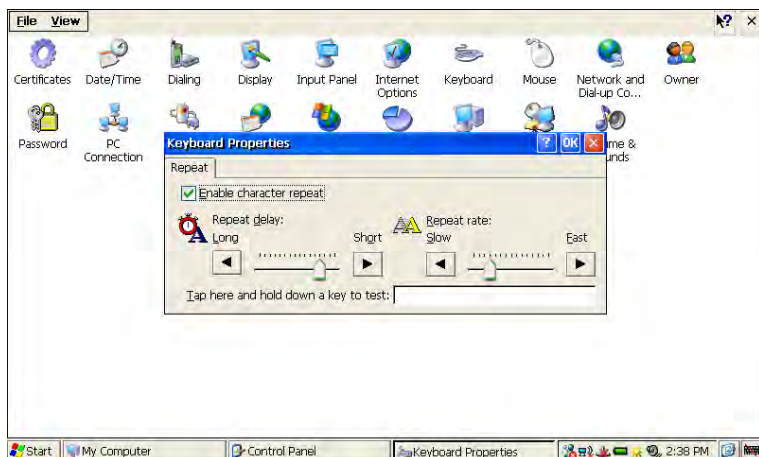
All the options for Internet Explorer can be managed within Internet Options, including the default Start Page, Search Page, Security and Privacy settings as well as popup blocking.

Click "Start" -> click "Setting"->click "Control Panel", and then double click "Internet Options". The Internet Options will appear as shown below.



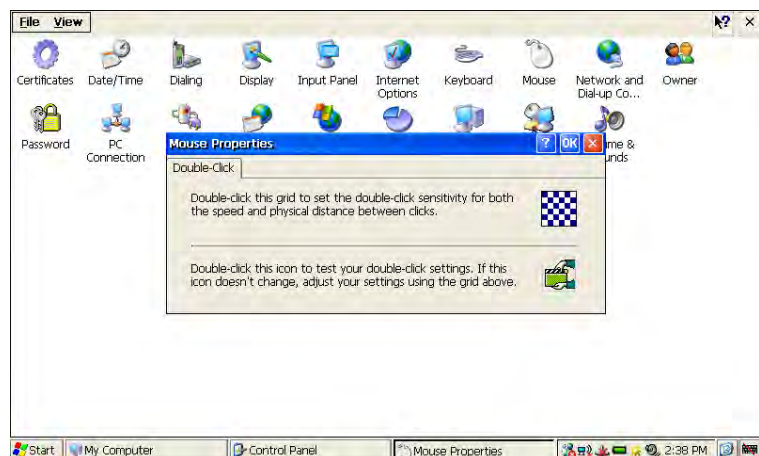
6.5 Keyboard

Click "Start" -> click "Setting"->click "Control Panel", and then double click "Keyboard", the Keyboard Properties window as below. This setting can change Keyboard repeat rate and delay.



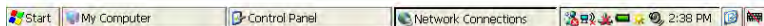
6.6 Mouse

Click "Start" -> click "Setting"->click "Control Panel", then double click "Mouse", the Mouse Option window will be shown as below. This setting can change the mouse Double-click sensitivity.



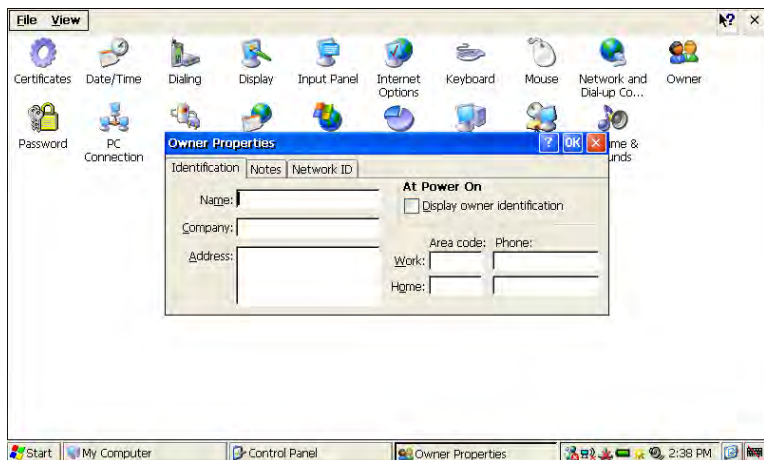
6.7 Network and Dial-up Connections

Click "Start" -> click "Setting"->click "Control Panel", then double click "Network and Dial-up Connections", the Network and Dial-up Connections window will be shown as below.



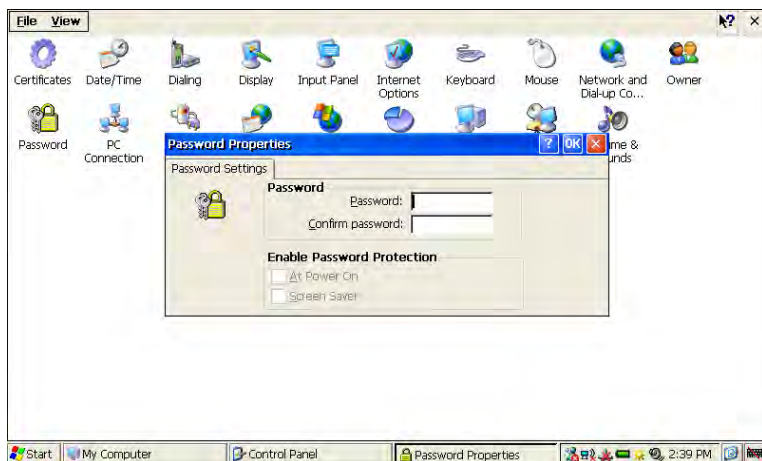
6.8 Owner

Click "Start" -> click "Setting"->click "Control Panel", then double click "Owner", the Owner Properties window will be shown as below. You can use it to modify your identity details which are stored on WirelessBook, such as name, company and address, etc.



6.9 Password Setting

Click "Start" -> click "Setting"->click "Control Panel", then double click "Password", the Password Properties window will be shown as below. It can change the owner's password setting and safety option.

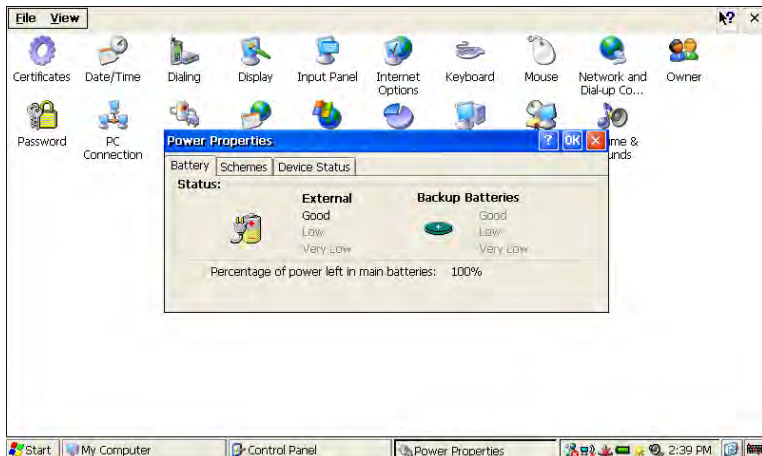


After setting the password protection, the password will need to be entered once you turn on the WirelessBook.

6.10 Power

You can get the power properties, Batteries status with this dialog box.

Click "Start" -> click "Setting"->click "Control Panel", then double click "Power", the Power Properties window will be shown as below.

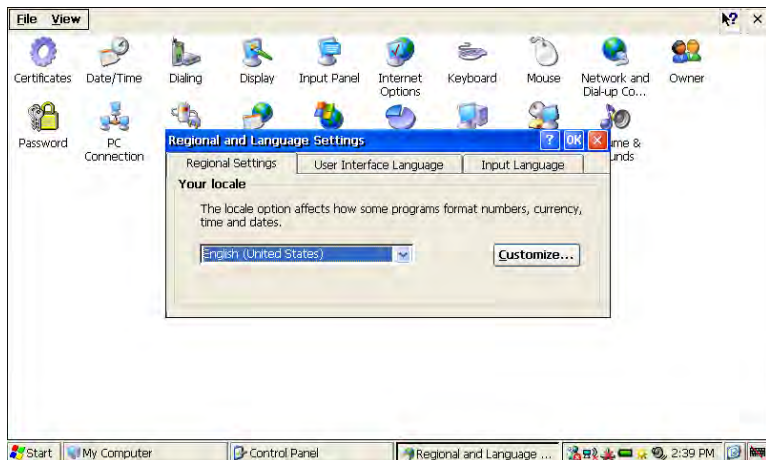


Please note that batteries status can only indicate once no adapter is plug in for charging.

6.11 Regional Settings

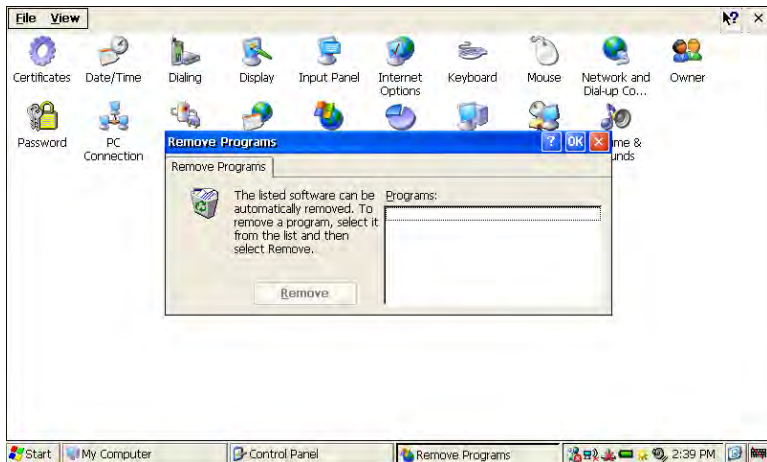
This setting can change display format of number, currency, date and time. It is suggested using default setting for "User Interface Language" and "Input language" options.

Click "Start" -> click "Setting"->click "Control Panel", then double click "Regional Settings", the Regional and Language Settings Properties window will be shown as below.



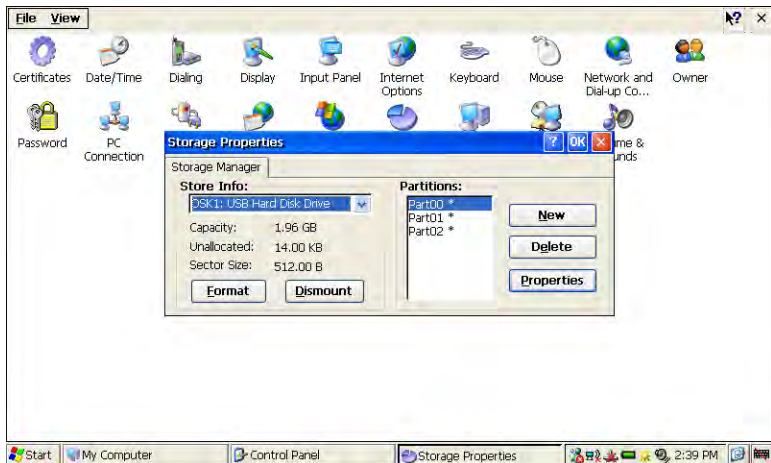
6.12 Remove Programs

Click "Start" -> click "Setting"->click "Control Panel", then double click "Remove Programs", the Remove Programs Properties window will be shown as below. User can remove the installed program.



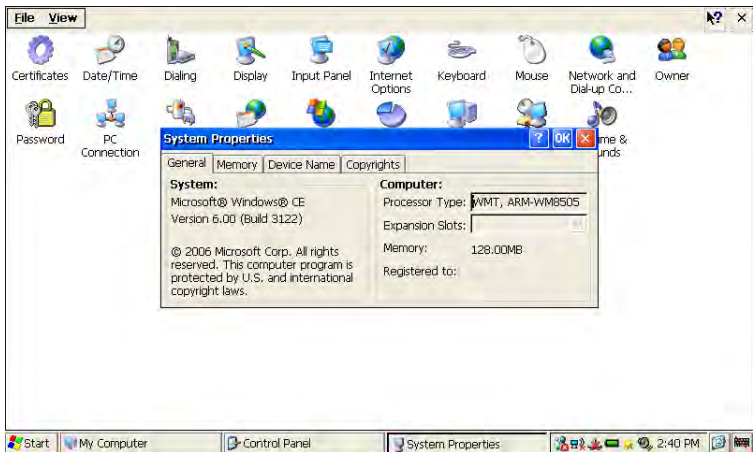
6.13 Storage Manager

Storage device can be managed within "Store info". Select storage device, the total capacity, unallocated capacity and sector size will be listed. The selected device can be format or dismounted in this window.



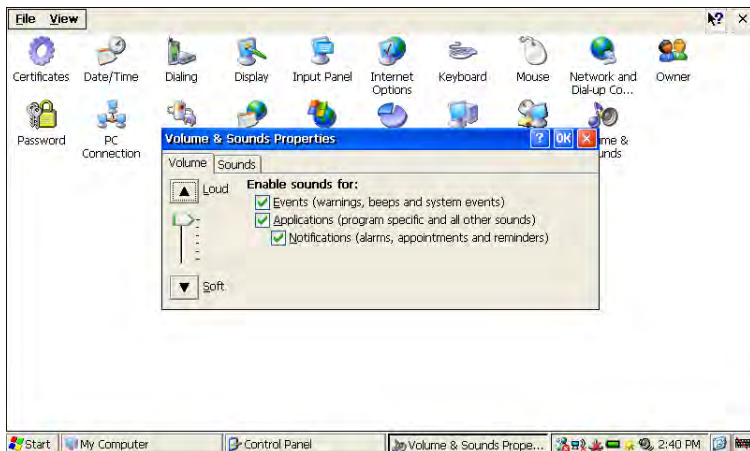
6.14 System

Click "Start" -> click "Setting"->click "Control Panel", then double click "System", the System Properties window will be shown as below. Check the system information and modify the memory allocation of system.



6.15 Volume and Sounds

Click "Start" -> click "Setting"->click "Control Panel", then double click "Volume & Sounds", the Volume & Sounds Properties window will be shown as below. This setting can change sounds enable and volume setting.



6.16 System Reset

During WirelessBook encountering a system hang or abnormal operation condition, please use a small pointer (not metallic material) to push the reset switch at the bottom of WirelessBook to reset the system.

After resetting, please power on the machine again.