

Home Surveillance System

Digital Wireless Camera & Receiver

Users Manual

Model: A⁺ alarm

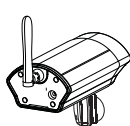
INDEX

PACKAGE CONTENTS	01
FUNCTION INTRODUCE	02
Wireless Camera	02
Receiver	03
Menu	06
SYSTEM INSTALLATION	07
Camera Install	07
Receiver Install	07
Software Install	08
Software Function	09
OPERATION	11
Work with TV.....	11
Work with Computer.....	11
TROUBLE SHOOTING	12

PACKAGE CONTENTS

Check all of the components shown as below are included in box before using.

1. Wireless Camera	x1
2. Receiver	x1
3. 9V Power Adaptor (for Camera)	x1
4. 5V Power Adaptor (for Receiver)	x1
5. RCA/ Scart Cable	x1
6. AV Cable	x1
7. USB Cable	x1
8. Waterproof of Cover	x1
9. Software CD	x1
10. Stand (for Camera).....	x1
11. Manual	x1



Transmitter



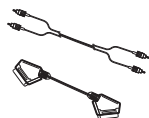
Receiver



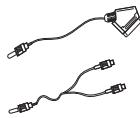
DC 9V
(Camera)



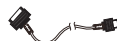
DC 5V
(Receiver)



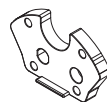
RCA Cable
(or Scart cable)



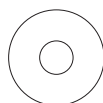
A/V Cable



USB Cable



Waterproof of Cover



Software CD



Stand
(Camera)

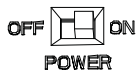


Users Manual

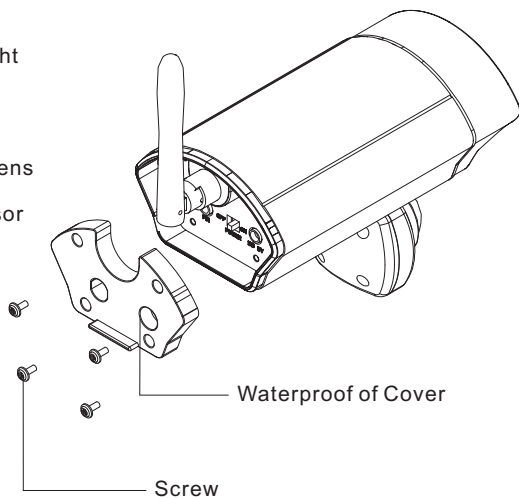
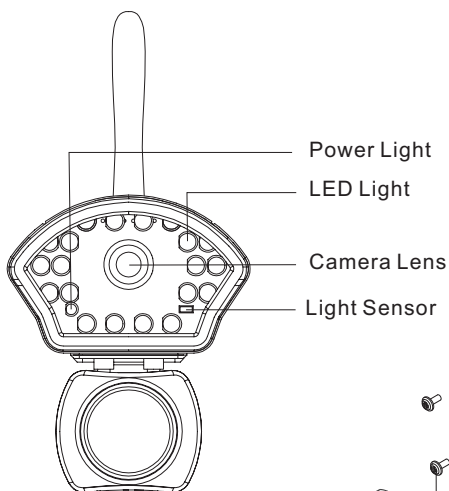
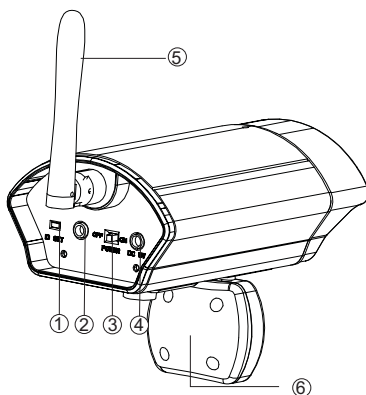
FUNCTION INTRODUCE

Wireless Camera

1. ID SET
2. PIR Jack
3. Power Switch



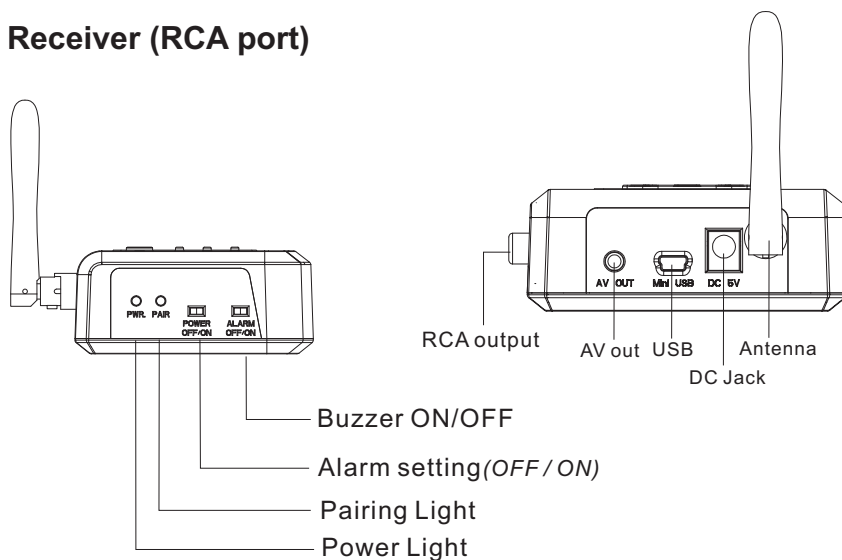
4. DC Jack
5. Antenna
6. PIR



Notice: Please put the waterproof of cover to back of camera with screws after finishing all setting.

FUNCTION INTRODUCE

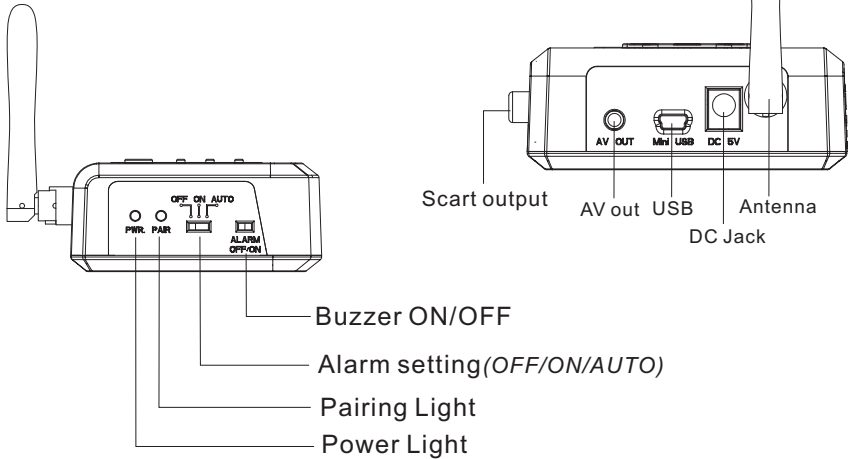
Receiver (RCA port)



Item	Define
Buzzer ON/OFF	Turn OFF the Buzzer, and it won't sound after detonating Turn ON the Buzzer, and it will sound after detonating
Alarm Setting	OFF: Turn off the alarm system, it will haven't the detonating function. ON: Camera always send the signal to receiver.
Pairing Light	It sparkles when the receiver are pairing with the camera
Power Light	It lights when the power on.
AV output	Connect to monitor or DVR
USB Port	Connect to computer
DC Jack	Connect to Power adaptor
Antenna	Receive the Camera signal
RCA Output	Connect the television

FUNCTION INTRODUCE

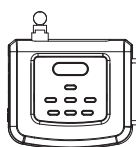
Receiver (Scart port)



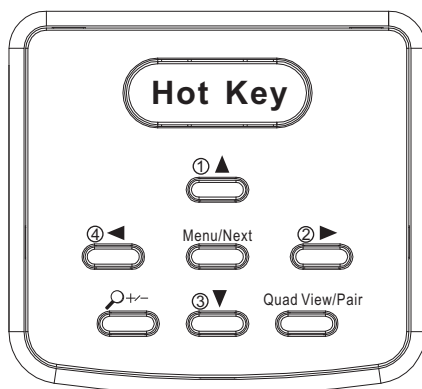
Item	Define
Buzzer ON/OFF	Turn OFF the Buzzer, and it won't sound after triggering Turn ON the Buzzer, and it will sound after triggering
Alarm Setting	OFF: Turn off the alarm system, it will haven't the detonating function. AUTO: Stand by mode. Camera signal was off unless it was triggered. ON: Camera always send the signal to receiver.
Pairing Light	It sparkles when the receiver are pairing with the camera
Power Light	It lights when the power on.
AV output	Connect to monitor or DVR
USB Port	Connect to computer
DC Jack	Connect to Power adaptor
Antenna	Receive the Camera signal
RCA Output	Connect the television

FUNCTION INTRODUCE


Receiver(Button Define)



Zoom In/Out



Notice: The Button don't work(except "Hot Key") when connecting PC

Item	Define
Hot Key	Cut the buzzer immediately. <i>when the Receiver alarm, press it and sound stopped</i>
Menu/Next	Press "Menu" to enter the setting system, and select function you want to set; press again the system will enter the next page, press twice and then leave the setting system.
Up (Camera 1)	Press "Up" to choose upward from the setting item.
Right (Camera 2)	Press "Right" to set rightward from the item you choose .
Down (Camera 3)	Press "Down" to set downward from the item you choose.
Left (Camera 4)	Press "Left" to choose leftward from the setting item.
	Zoom In /Out. Enlarge two times the camera video or back to normal size.
Quad View / Pair	In Menu mode: select "Cam Pair" function, and press "pair" button on Receiver to make a ID match with camera. In TV mode: press "Quad View" button then start to show quad view, press again and back to the previous camera.

Notice:

The UP、Right、Left、Down button can be the hotkey for switching to one of four camera immediately.

FUNCTION INTRODUCE

Menu

Press Menu button:

First page (press “Menu” for once)

Item		Default	Define
NTSC/PAL		PAL	Setting NTSC or PAL by hand
Language	English	English	
Cam Pair	1 2 3 4		Select one of four channels, and then press the “ID SET” button of camera and receiver to pair with each other(in 60 seconds).
Scan Time	OFF 5sec 10sec 15sec		Glance every camera that has paired with receiver already. And it can select the time interval of glance or off.
Image Quality	QVGA Normal VGA		Select the video quality to show on the monitor
Zoom In/Zoom Out	Enlarge two times the camera video or back to normal size. In “Zoom In” mode. the Video quality is “QVGA” only.		
FREQ	50/60 Hz	To adjust the frequency of camera side.	

Second page (press “Menu” again)

Camera 1	ON/OFF	Turn on or off the camera signal.
Camera 2		
Camera 3		
Camera 4		
Reset		Reset all setting.

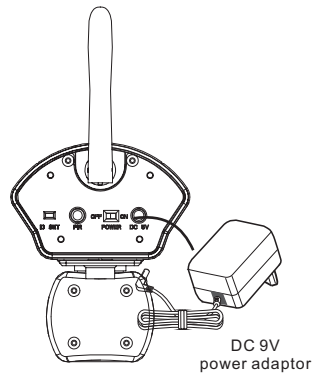
Press “Menu” for third time and back to camera video.

SYSTEM INSTALLATION

Camera Install

Set the Camera:

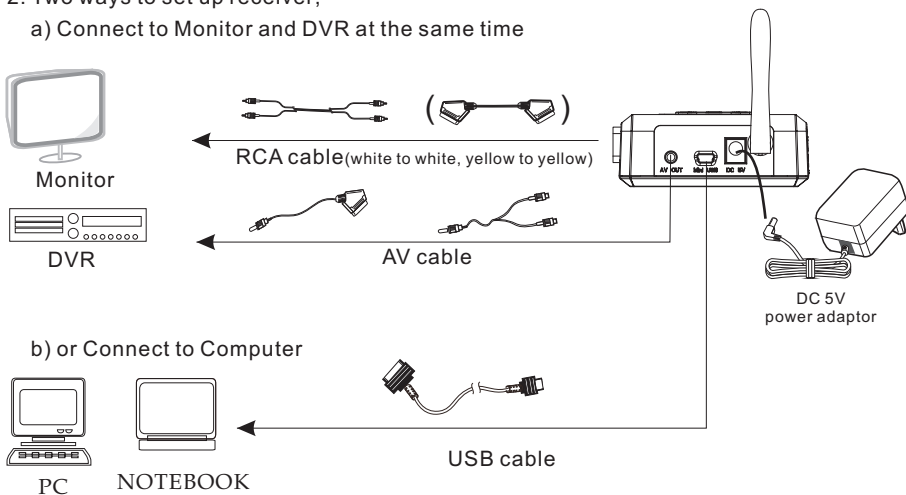
Plug the 9V DC adaptor to Camera and switch to power on.



Receiver Install

Set the Receiver:

1. Plug the 5V DC adaptor to Receiver and switch to power on.
2. Two ways to set up receiver;
 - a) Connect to Monitor and DVR at the same time



Notice:

- (1) TV mode and PC mode can not connect the receiver at the same time.
- (2) Receiver connect to PC don't need to plug the power adaptor.

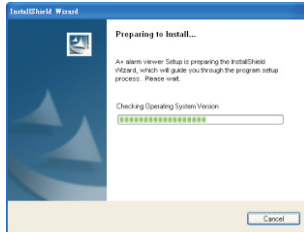
SYSTEM INSTALLATION

Software Install (connect to computer)

1. Put the compact disk to CD-ROM drive of PC
2. Install the software of A+ alarm viewer

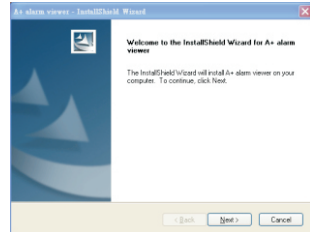
Step 1

Press the A+ alarm viewer twice,
then start to install



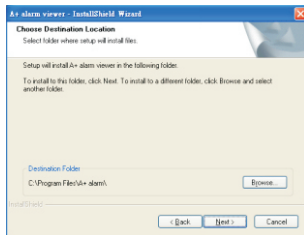
Step 2

Please click the "Next"



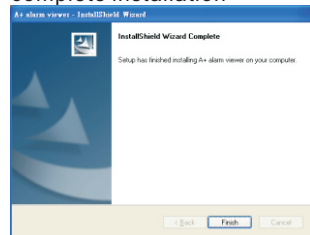
Step 3

Please click the "Next"



Step 4

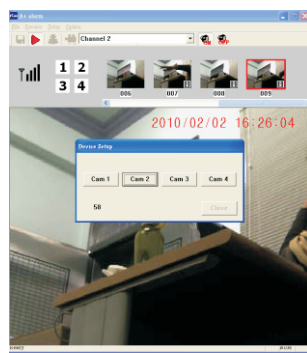
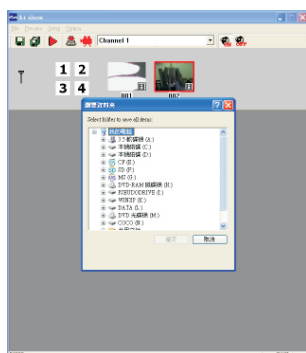
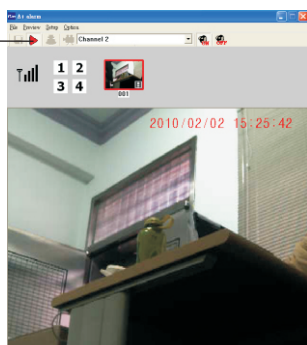
Then press the "Finish" to
complete installation



SYSTEM INSTALLATION

Software Function

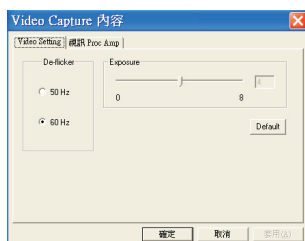
Item		Define
File	Save as	Move the camera video file or photos to another path(09-1)
	Exit	Close the software
Preview	Start Preview	Start to preview
	Stop Preview	Stop previewing
Setup	Device Setup	Select one of four channel, then press ID SET on camera in 60 seconds, the screen will show the camera video if the pairing is successful.(09-2)
Option	Video Property	Setting the video property(09-3,09-4)



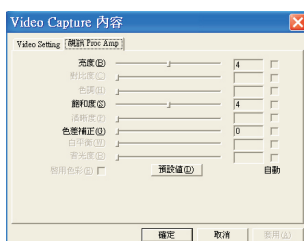
Auto Record : the system will record the camera video automatically after triggering

09-1

09-2



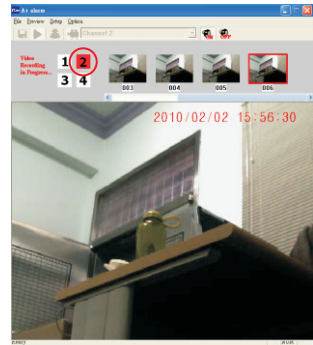
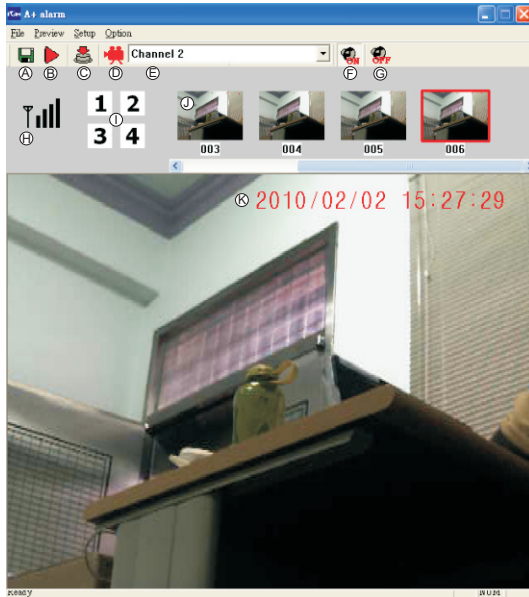
09-3



09-4

SYSTEM INSTALLATION

Software Function



10-1

- (A) Move the camera video file or photos to another path
- (B) Press it and Auto Record the camera video for 17~19 seconds each file after triggering. (Avi format)
(The video signal will be saved to C:/video, unless you change the storage path.)
- (C) Take the picture (Jpg format)
(The photo will be saved to C:/video, unless you change the storage path)
- (D) Record the camera video.Each video file can record 5 minutes at most. (Avi format)
(The video signal will be saved to C:/video, unless you change the storage path.)
- (E) Choose the camera channel or quad mode.
- (F) Turn on the buzzer on computer.
- (G) Turn off the buzzer on computer.
- (H) Show the wireless signal.
- (I) Show four cameras, and it turns to red color after detonating.(10-1).
- (J) Preview all video files and photos in this time software opening. click one of them twice will play the file.
- (K) Show the real time of camera video.

OPERATION

Work with TV

Step 1:

Power on the receiver and camera

Step 2:

Complete the pairing

Step 3:

Receiver connects to TV by RCA or Scart cable (P7)

Step 4:

Press the TV/AV button on controller of TV, then switch to camera channel.

You can select any setting on receiver when the TV monitor is switched to camera.

Step 5:

Press the hot key on receiver to stop the buzzer after detonating.

(The buzzer function will start to work again **after 2 minutes.**)

Work with Computer

Step 1:

Install the software to computer (P8)

Step 2:

Power on the receiver and connect to computer by USB cable(P7)

Step 3:

Power on the camera

Step 4:

Open the A+ alarm

Step 5:

Then start to work(P8)

Step 6:

The buzzer on receiver and computer are both alarm.

(The buzzer function on receiver side will start to work again after **2 minutes.**)

And press the buzzer off on software to stop the buzzer after detonating.

Notice:

Please refer to the trouble shooting when the A+ alarm software is showed
“ Can not connect to device” .

TRUBLE SHOOTING

Buzzer alarm doesn't work?

1. Make sure the receiver and camera are power on.
2. Make sure the PIR cable is plugged into PIR port
3. Check the alarm setting of receiver is in "STB" or "ON".
4. Check the receiver is paired with camera already.
5. Check the receiver is switched to Buzzer on.

Buzzer alarm can't turn it off ?

1. Buzzer keep alarming If the camera is still triggering.

Receiver Doesn't work with computer?

1. Make sure the receiver and camera are power on.
2. Check the alarm setting of receiver is in "STB" or "ON".
3. Check the receiver is paired with camera already.
4. Check the USB cable is plugged to the computer.
(or unplug other device, only plug the receiver and try again. sometimes USB cable don't work cause the computer USB port power was shared to another device)
5. Make sure the software has installed already.

Receiver connect to TV don't work?

1. Make sure the receiver 、 camera and TV are power on.
2. Check the alarm setting of receiver is in "STB" or "ON".
3. Check the receiver is paired with camera already.
4. Check the RCA cable is plugged to the TV already. and press the A/V button on controller to switch to camera video.

Camera doesn't work?

1. Make sure the camera are power on.
2. Make sure the PIR cable is plugged into PIR port
3. Check the power switch is "ON".

TV monitor doesn't show camera video?

1. Make sure the receiver and camera are power on.
2. Make sure the PIR cable is plugged into PIR port
3. Check the alarm setting of receiver is in "STB" or "ON".
4. Check the receiver is paired with camera already.

TROUBLE SHOOTING

The software shows “can not connect to device”?

1. Make sure the receiver are power on.
2. Make sure the USB cable is plugged.
3. Check the alarm setting of receiver is in “STB” or “ON”.
4. Check the power light is opened.

Why do the PIR triggered without triggering at times?

The PIR is a kind of sensor, so it is very easy triggered by irresistible factors.
ex:wind 、 humidity 、 rainy day.

The PIR do not trigger at times?

The distance of workable of PIR is 3~5M, so it won't be triggered out of range.

Why can't the receiver and camera pair with ?

1. Make sure the alarm switch is “on” or “Auto”
2. Make the receiver and camera are power on
3. Receiver(work to TV): menu->cam pair-> select one of four channels-> press “pair” button on receiver-> press “ID Set” on Camera in 60 seconds
4. Receiver(work to PC):open software->Setup->device setup-> select one of four channels ->press “ID Set” on Camera in 60 seconds
5. Change another channel and try again.
6. Move your receiver and camera slowly to find a best reception position for your security product
7. Check if there is any interference source near receiver or camera, such as microwave oven.

Home Surveillance System
Digital Wireless Camera & Receiver



Home Surveillance System
Digital Wireless Camera & Receiver



Federal Communication Commission Interference Statement

This equipment has been tested and found to comply with the limits for a Class B digital device, pursuant to Part 15 of the FCC Rules. These limits are designed to provide reasonable protection against harmful interference in a residential installation.

This equipment generates, uses and can radiate radio frequency energy and, if not installed and used in accordance with the instructions, may cause harmful interference to radio communications. However, there is no guarantee that interference will not occur in a particular installation. If this equipment does cause harmful interference to radio or television reception, which can be determined by turning the equipment off and on, the user is encouraged to try to correct the interference by one of the following measures:

- . Reorient or relocate the receiving antenna.
- . Increase the separation between the equipment and receiver.
- . Connect the equipment into an outlet on a circuit different from that to which the receiver is connected.
- . Consult the dealer or an experienced radio/TV technician for help.

FCC Caution: To assure continued compliance, any changes or modifications not expressly approved by the party responsible for compliance could void the user's authority to operate this equipment. (Example - use only shielded interface cables when connecting to computer or peripheral devices).

FCC Radiation Exposure Statement

This equipment complies with FCC RF radiation exposure limits set forth for an uncontrolled environment. This equipment should be installed and operated with a minimum distance of 20 centimeters between the radiator and your body.

This transmitter must not be co-located or operating in conjunction with any other antenna or transmitter.

The antennas used for this transmitter must be installed to provide a separation distance of at least 20 cm from all persons and must not be co-located or operating in conjunction with any other antenna or transmitter.

This device complies with Part 15 of the FCC Rules. Operation is subject to the following two conditions:

- (1) This device may not cause harmful interference, and (2) This device must accept any interference received, including interference that may cause undesired operation.