



Accton Wireless Broadband Corp.

**PC200
2.3/2.5/3.5 GHz Mobile WiMAX
CardBus Card**

User Guide

User Guide

PC200

*IEEE 802.16e-2005 Mobile WiMAX CardBus Card,
with 2.3, 2.5, and 3.5 GHz Frequency Band Models*

PC200
E082008-CS-R01
149100000300W

Compliances

Federal Communication Commission Interference Statement

This equipment has been tested and found to comply with the limits for a Class B digital device, pursuant to Part 15 of the FCC Rules. These limits are designed to provide reasonable protection against harmful interference in a residential installation. This equipment generates, uses and can radiate radio frequency energy and, if not installed and used in accordance with the instructions, may cause harmful interference to radio communications. However, there is no guarantee that interference will not occur in a particular installation. If this equipment does cause harmful interference to radio or television reception, which can be determined by turning the equipment off and on, the user is encouraged to try to correct the interference by one of the following measures:

- Reorient or relocate the receiving antenna
- Increase the separation between the equipment and receiver
- Connect the equipment into an outlet on a circuit different from that to which the receiver is connected
- Consult the dealer or an experienced radio/TV technician for help

This device complies with Part 15 of the FCC Rules. Operation is subject to the following two conditions: (1) This device may not cause harmful interference, and (2) this device must accept any interference received, including interference that may cause undesired operation.

FCC Caution: Any changes or modifications not expressly approved by the party responsible for compliance could void the user's authority to operate this equipment.

FCC ID: V8YFW638PC25000W is for 2.5G only.

IMPORTANT NOTE: FCC Radiation Exposure Statement

This equipment complies with FCC radiation exposure limits set forth for an uncontrolled environment. End users must follow the specific operating instructions for satisfying RF exposure compliance. To maintain compliance with FCC RF exposure compliance requirements, please follow operation instruction as documented in this manual.

This transmitter must not be co-located or operating in conjunction with any other antenna or transmitter.

The availability of some specific channels and/or operational frequency bands are country dependent and are firmware programmed at the factory to match the intended destination. The firmware setting is not accessible by the end user.

SAR (Specific Absorption Rate) Compliance Statement

SAR compliance has been established in typical laptop computer(s) with a CardBus slot, and the product can be used in typical laptop computers with CardBus slots. Other applications, such as handheld PCs or similar devices have not been verified and may not be in compliance with related RF exposure rules and such use shall be prohibited.

"Due to the essential high output power natural of WIMAX device, use of this device with other transmitter at the same time may exceed the FCC RF exposure limit and such usage must be prohibited (unless such co-transmission has been approved by FCC in the future)."

EC Conformance Declaration

Marking by the above symbol indicates compliance with the Essential Requirements of the R&TTE Directive of the European Union (1999/5/EC). This equipment meets the following conformance standards:

- EN 60950-1 (IEC 60950-1) - Product Safety
- EN 301 489-1, EN 301 489-4 - EMC requirements for radio equipment
- EN 50385 - Country specific SAR requirements

This device is intended for use in all European Community countries:

About This Guide

Purpose

This guide details the hardware features of the PC200 WiMAX CardBus Card, including its physical and performance-related characteristics, and how to install the device and use its configuration software.

Audience

This guide is for PC users with a working knowledge of computers. You should be familiar with Windows operating system concepts.

Conventions

The following conventions are used throughout this guide to show information:

Note: Emphasizes important information or calls your attention to related features or instructions.

Caution: Alerts you to a potential hazard that could cause loss of data, or damage the system or equipment.

Warning: Alerts you to a potential hazard that could cause personal injury.

Related Publications

The following publication gives basic information on how to install and use the WiMAX CardBus Card.

Quick Installation Guide

Also, as part of the card's configuration software, there is online help that describes all management features.

Revision History

This section summarizes the changes in each revision of this guide.

July 2008 Revision

This is the first revision of this guide. This guide is valid for software version 1.0.3.0.

Contents

Chapter 1: Introduction	1-1
Features	1-1
System Requirements	1-2
Package Checklist	1-2
Hardware Description	1-2
Antennas	1-2
CardBus Connector	1-2
LED Indicators	1-3

Chapter 2: Installation	2-1
--------------------------------	------------

Chapter 3: Configuration	3-1
Accessing the WCM Utility	3-1
Display Options	3-2
View Menu Options	3-3
Connection Management	3-4
Lost WiMAX Connection	3-5
Selecting Profiles	3-6
Editing a Profile	3-7
Card Settings	3-9
Network Information	3-13
WiMAX Connection Statistics	3-14
Tool Menu	3-16
Disable Menu Bar	3-16
Turning Power On/Off	3-16
Safely Remove Hardware	3-17
Lock PC Card Now	3-17
Sounds for Events	3-17
Software Upgrade	3-19

Chapter 4: Administrator Mode	4-1
Accessing Administrator Mode	4-1
Setting Profiles	4-3
Adding a New Profile	4-4
Advanced Configuration	4-8

Appendix A: Troubleshooting	A-1
Diagnosing LED Indicators	A-1
Network Connection Problems	A-1
Uninstalling the WCM Software	A-2

Appendix B: Specifications	B-1
-----------------------------------	------------

Glossary

Index

Chapter 1: Introduction

The WiMAX CardBus Card is a network adapter that enables a notebook PC to connect to a service provider's 2.3 GHz, 2.5 GHz or 3.5 GHz mobile WiMAX network.

The CardBus card plugs directly into a PC's compatible card slot and includes its own driver and configuration software for Windows XP and Windows Vista. The card includes two folding antennas that can be adjusted for best signal reception.

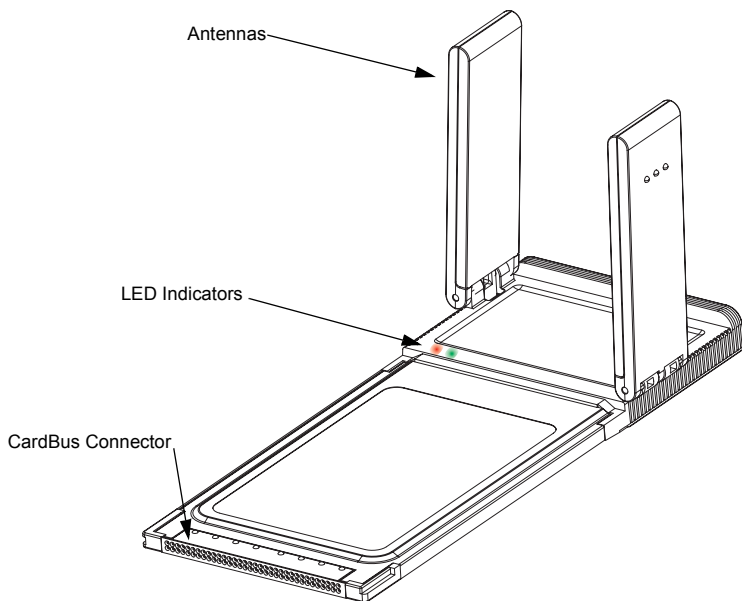


Figure 1-1. WiMAX CardBus Card

Features

- Three models for 2.3 GHz, 2.5 GHz or 3.5 GHz mobile WiMAX networks.
- Two fold-out antennas for optimal signal reception.
- Two LED indicators for power and link status.
- Easy installation with a user-friendly interface for configuration.
- Driver support for Windows XP with Service Pack 2 (SP2) and Windows Vista.
- Strong network security support.

System Requirements

Before you install the WiMAX CardBus Card, check your computer system meets the following requirements:

- A notebook or desktop computer with a CardBus slot
- Microsoft Windows XP or Windows Vista
- Microsoft .NET Framework Version 2.0 (or higher) installed on the host computer
- A 1 GHz Pentium CPU or higher with a minimum of 256 MB of RAM
- An available CD drive

Package Checklist

The WiMAX CardBus Card package includes these items:

- WiMAX CardBus Card (PC200-2.3, PC200-2.5, or PC200-3.5)
- Quick Installation Guide
- Driver and utility CD (includes User Guide)

Inform your dealer if there are any incorrect, missing or damaged items. If possible, retain the carton, including the original packing materials. Use them to repack the product in case there is a need to return it.

Hardware Description

The PC200 WiMAX CardBus card enables notebook PC users to connect to a WiMAX Internet service provider.

Antennas

Two fold-out antennas for optimal WiMAX signal reception. The antennas can be placed in the closed position when the card is not in use.

CardBus Connector

The card can be installed in any notebook PC with a 33 MHz 32-bit CardBus slot. The notebook PC must be running Windows XP with Service Pack 2 or Windows Vista.

LED Indicators

The WiMAX CardBus card includes two status LED indicators, as described in the following figure and table.

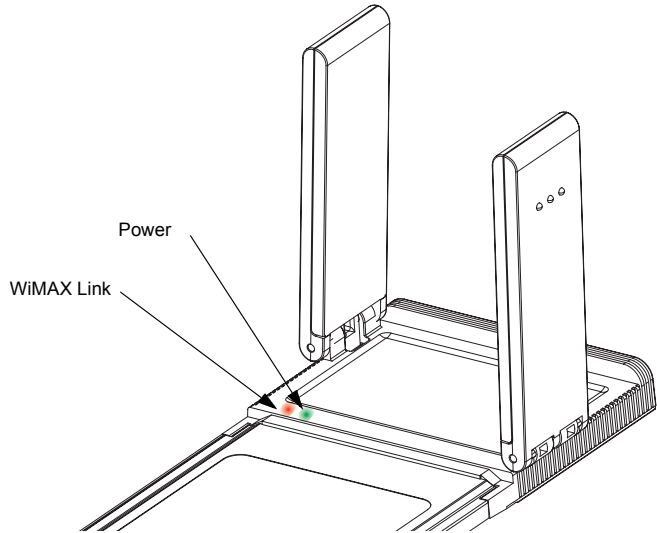


Figure 1-2. LED Indicators

LED	Status	Description
Green	On	The card is correctly installed in a slot and is receiving power.
Red	On	The card has a valid link with a WiMAX network.

Chapter 2: Installation

The CD-ROM that comes with the package contains the WiMAX CardBus Card driver and configuration software.

Caution: The WiMAX CardBus Card requires the Microsoft .NET Framework Version 2.0 (or higher) to be installed on the host computer. If the system does not have the .NET Framework 2.0 already installed, you must download the software from Microsoft and install it before starting installation.

To install the WiMAX CardBus Card driver and software utility for Windows XP or Windows Vista, follow these steps:

1. Turn on your notebook and wait until the Windows system has completely started.
2. Insert the card into an available CardBus slot. When the card is inserted correctly, its green LED turns on (see page 1-3).

When you first insert the card in a slot, the Windows “Found New Hardware” dialog box displays. Just click Cancel.

3. Load the driver and utility CD that comes with the package. The “InstallShield Wizard” program should start automatically.

If the install program does not start automatically, open the folder that displays the CD’s contents and find the file “Setup.exe” in the root directory. Double click the file to start the install program.

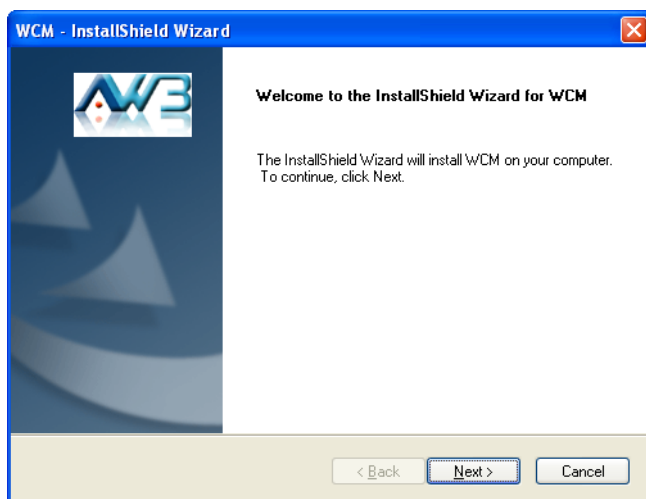


Figure 2-1. InstallShield Wizard Start

Installation

Note: The installation interface for Windows XP is shown in this user guide. However, the installation screens are similar for all Microsoft Windows systems.

4. Click Next to continue the installation.
5. Select to accept the license agreement terms, then click Next.

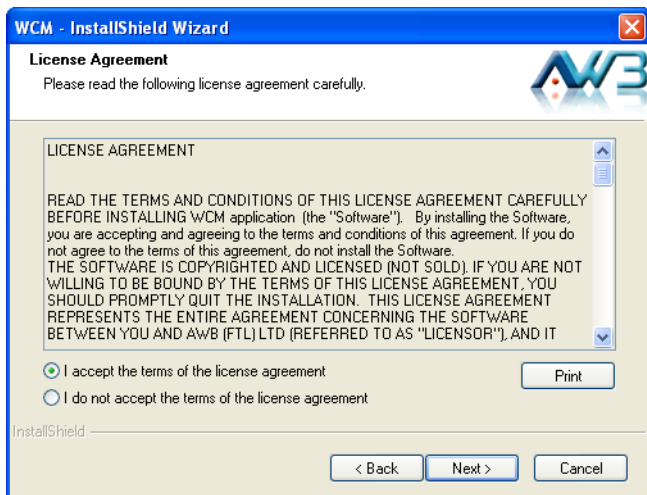


Figure 2-2. Accept License Agreement Terms

6. Select to install the PC Card driver, then click Next.

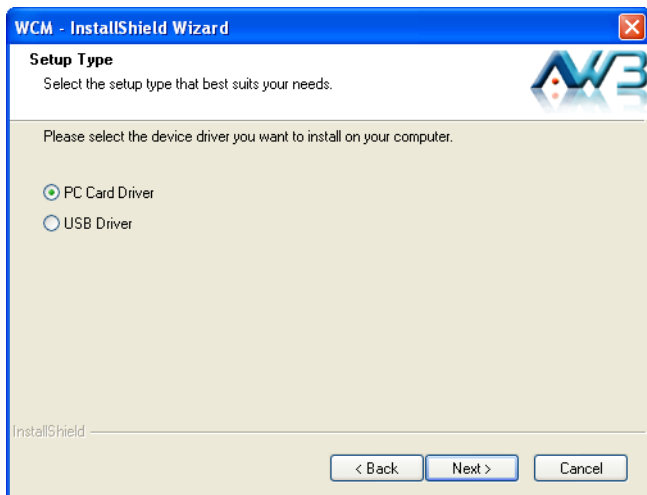


Figure 2-3. Select PC Card Driver

7. Confirm the location of the installation files on the PC before clicking Next.

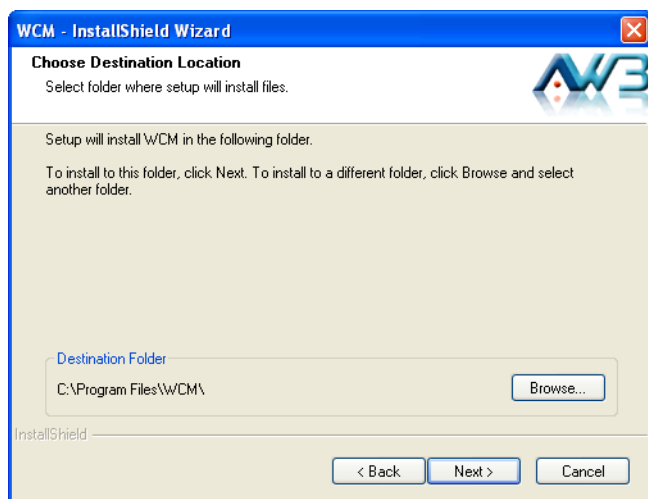


Figure 2-4. Choose Destination Location

8. Wait for the software installation procedure to complete.

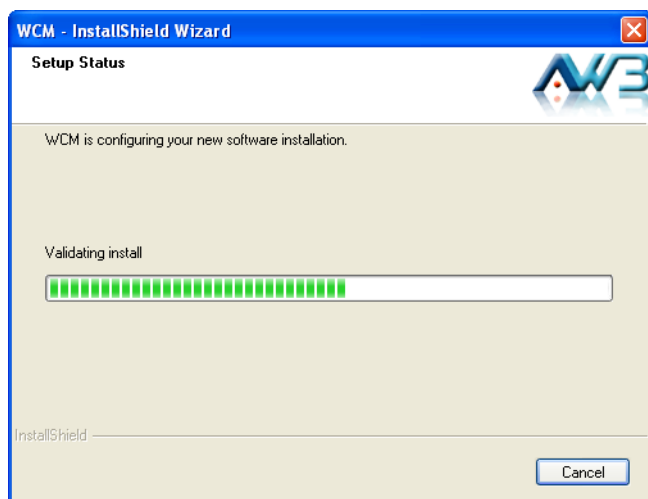


Figure 2-5. Installation in Progress

Installation

9. If the following message concerning Windows Logo testing is displayed, click the “Continue Anyway” button.



Figure 2-6. Windows Logo Testing Message

10. When the “InstallShield Wizard Complete” message displays, click Finish.

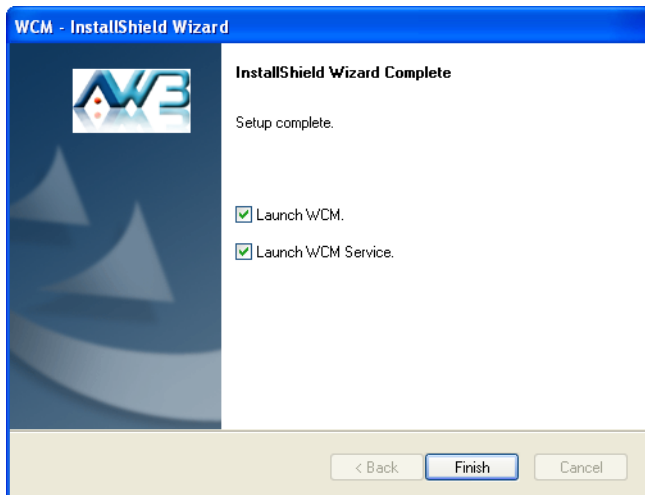


Figure 2-7. InstallShield Wizard Complete

Note: If you encounter problems installing the CardBus card, see “Troubleshooting” on page A-1.

Chapter 3: Configuration

The Wireless Connection Manager (WCM) software provides all the tools to manage and monitor your WiMAX connection. After initial installation, the software starts automatically every time you insert the WiMAX CardBus Card.

Accessing the WCM Utility

Once the utility installation is complete, there are several methods of starting the WCM software other than by inserting the WiMAX CardBus Card.

Note: The utility screens are similar for all Microsoft Windows systems. The interface for Windows XP is described in this user guide.

From the WCM shortcut icon on the Windows XP or Windows Vista desktop:

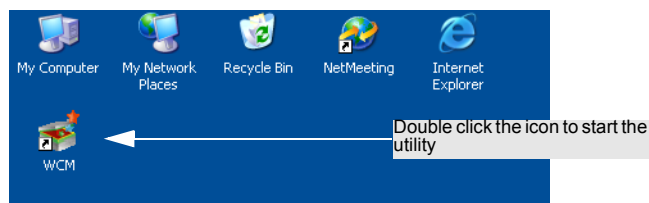


Figure 3-1. WCM Desktop Icon

From the WCM icon on the Windows System Tray:

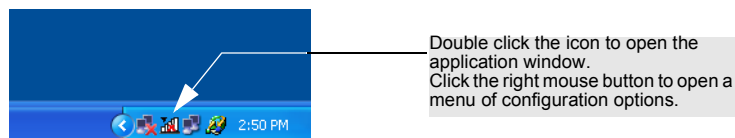


Figure 3-2. WCM System Tray Icon

The System Tray icon also indicates the WiMAX connection status.



White: No connection to a WiMAX network.



Red: Connected to a network, but no IP address assigned. Lighter color bars indicate the receive signal level.



Green: Connected to network with an assigned IP address. Lighter color bars indicate the receive signal level.

Display Options

The WCM software has two display options, or “skins,” to choose from. The main screens for the two skins are shown below.



Figure 3-3. Jet Black Skin

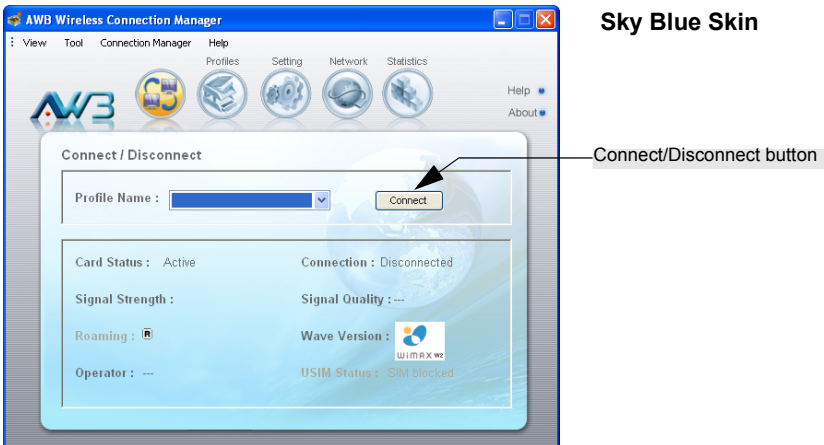


Figure 3-4. Sky Blue Skin

Other than the display style, there are no function differences between the default Jet Black Skin and the alternate Sky Blue Skin. You can select the skin type from the Tool menu.

This guide describes the WCM software for the Jet Black Skin.

View Menu Options

The WCM utility's View menu includes three options that apply to the display window:

Compact View — Displays the window in compact format that uses less screen space. This view displays only the connection status and other indicators.

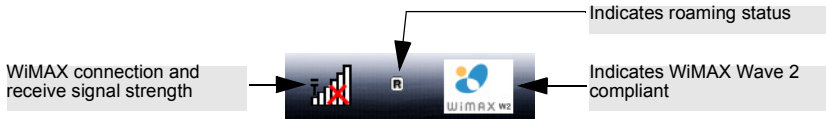


Figure 3-5. WCM Compact View

Docking — Forces the display window to “jump” to the nearest screen edge.

Always on Top — The display window always remains in front of other windows.

Connection Management

The WCM Connect/Disconnect screen displays information about the wireless link to the service provider network.



Figure 3-6. Connect/Disconnect Screen

The displayed items on this screen can be described as follows:

Profile Name — Name of a user account profile that defines a WiMAX network connection. When a profile is set to “Auto Connection” (see “Editing a Profile” on page 3-7), the Profile Name cannot be changed and the utility automatically scans and connects to the WiMAX network defined by the default profile.

Connect/Disconnect — Manually connects or disconnects to the WiMAX service as defined in the selected profile. When a profile is set to “Auto Connection” (see “Editing a Profile” on page 3-7), the Connect button is disabled and the utility automatically scans and connects to the WiMAX network defined by the default profile.

Card Status — Indicates if the card is plugged into a slot on the host PC and is active or powered off.

Connection — Indicates the current status of the WiMAX network connection.

Signal Strength — An image that shows the current receive signal strength indicator (RSSI) of the received WiMAX radio signal.

Signal Quality — A indication of the carrier-to-interference-plus-noise-ratio (CINR), which measures the strength of the receive signal compared to other interference and noise. There are three possible values; Excellent, Good, or Poor.

Roaming — Indicates when a user roams onto a network other than the home network.

Wave Version — Indicates whether WiMAX Wave 1 or WiMAX Wave 2 is available in the area.

Operator — Displays the network operator name to which the card is connected.

USIM Status — Displays the Subscriber Identity Module (SIM) or Universal SIM (USIM) card status.

Lost WiMAX Connection

If your card does not detect a signal from a WiMAX network, the following screen is displayed.

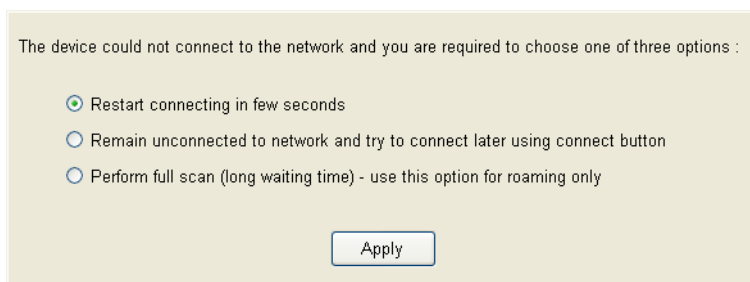


Figure 3-7. No Detected Signal

When you see this screen, you have three options:

- **Restart connecting in a few seconds** — Use this option when you are sure there is a signal from a WiMAX network to which you want to connect.
- **Remain unconnected to network and try to connect later using connect button** — Use this option if you wish to remain offline and continue working.
- **Perform full scan (long waiting time) - use this option for roaming only** — Use this option if you do not know the coverage in your local area, to determine what signals are available. Note that a full scan may take up to 30 seconds to complete.

Selecting Profiles

The WCM profiles enable a user to set specific settings for connecting to a WiMAX network. The WCM utility must have at least one profile configured and set as the “Default Profile” to be able to connect to a WiMAX service.

The WCM utility can contain up to ten profiles, as provided by the WiMAX service operator. One profile must be set as the “Default Profile.”

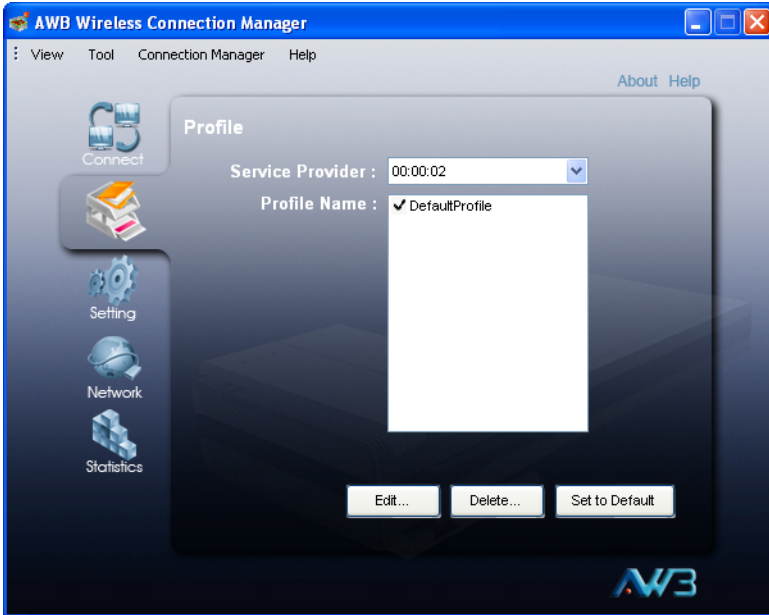


Figure 3-8. Profile Screen

Editing a Profile

Clicking the Edit button on the Profile screen displays the Edit Profile window.

Edit Profile

General | Scan

Profile Name : DefaultProfile

Operator Id : 00:00:02

Operator Name : AWB

Operator Restriction

☐ Home Operator ☒ No Operator Restriction

Connection Mode

☒ Auto Connection ☐ Manual Connection ☐ Prompt for Password

Power Save Mode

☒ High ☐ Medium ☐ Application Optimized

☒ Save as Default Profile ☐ Lock / Unlock Profile

OK Cancel

Figure 3-9. Edit Profile Screen - General Tab

The General tab on this screen displays the following items:

Profile Name — A name used to identify the new profile.

Operator ID — The ID number of the WiMAX network operator for this profile.

Operator Name — The name of the WiMAX network operator for this profile.

Operator Restriction — When set to “Home Operator,” the user can only connect to the service provider specified in the profile. When set to “No Operator Restriction,” the operator specified in the profile is used when the network is detected, otherwise the user can roam to other networks.

Connection Mode — When set to “Auto Connection” the utility will use the profile settings to automatically scan and connect to a WiMAX network.

Power Save Mode — To save power, the card can operate in one of three modes:

- **High:** The card will go to sleep and idle whenever it can.
- **Medium:** The card will go to sleep and idle only after a predefined time.

- **Application Optimized:** The card will go to sleep and idle only when the PC operating system allows it.

Save as Default Profile — Saves the profiles settings and sets it as the default.

Clicking the Scan tab on the Edit Profile screen displays the profile frequency and bandwidth settings.



Figure 3-10. Edit Profile Screen - Scan Tab

The Scan tab on the Edit Profile screen displays the following items:

Frequency — Specifies a center frequency to scan.

Bandwidth — Specifies the bandwidth of the channel; 5, 7, 8.75, or 10 MHz.

Card Settings

The Setting screen enables specific card and WCM utility features to be configured.



Figure 3-11. Setting Screen - General Tab

The displayed items on this screen can be described as follows:

Autolaunch on card insert — Automatically starts the WCM utility when the card is inserted into a PC slot.

Autolaunch minimized — When set to automatically start WCM, the utility starts in its Windows minimized form.

Debug Monitor — Enables logging of messages to the WCM debug monitor. The debug monitor window is displayed when the WCM utility restarts.

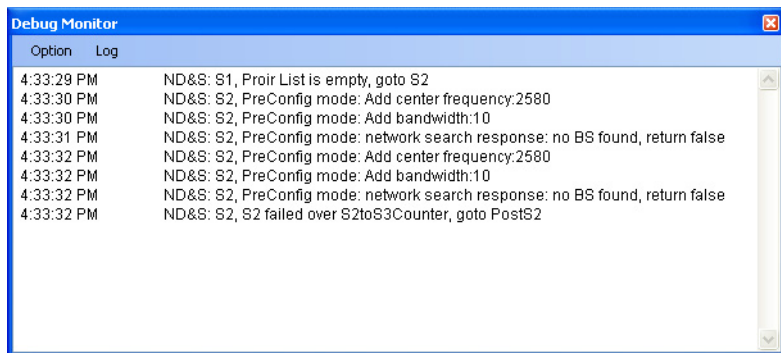


Figure 3-12. Debug Monitor Window

Prompt for Authentication — Displays a window that prompts for a user name and password when connecting to a WiMAX network.

Notice Warning Message — Enables messages to be displayed by the WCM utility for certain events:

- **WiMAX Connect lost:** The connection to the WiMAX base station was lost.
- **Call Guard:** Issues a warning when you are about to connect while roaming.
- **Card eject warning:** Displays a message to remove the card from its slot when WCM is closed.
- **Prompt before exit:** Requests a confirmation to close the WCM utility.

Clicking the Security tab on the Setting screen displays the card security settings.



Figure 3-13. Setting Screen - Security Tab

USIM Configuration — Enables support for SIM card security.

Security Lock — This security feature prevents others from using the WiMAX service. When the lock mode is enabled, the WiMAX connection is terminated. The user needs to first unlock the application to be able to use the WiMAX service.

- **Never Lock** — Disables the security lock of the WiMAX card.
- **Lock On Power Up** — When the WCM utility is started, the card is locked. To unlock the card, you need to enter a user-defined lock code. You can set the lock code when the lock option is selected. When the WCM utility starts, a window prompts for the lock code. Input the lock code to enable the WiMAX connection.



Note: If you forget the lock code, you will not be able to use WCM. Contact your service provider for assistance.

Clicking the Data tab on the Setting screen displays settings relating to the host PC.



Figure 3-14. Setting Screen - Data Tab

Disable network bindings for 1X connection — When the WiMAX card is configured, the card resources bind to Windows networking. Hence, file and printer sharing protocols are automatically created. These bindings are not required and may create additional over-the-air traffic, or cause security concerns. This setting allows you to disable the Windows network bindings for the WiMAX card.

Block standby/hibernate during WiMAX connection — The host PC may go into standby or hibernate mode during a WiMAX connection. The WCM utility can prevent this by blocking Windows standby or hibernate mode.

Network Information

The Network screen allows you to view the current network settings for the card.



Figure 3-15. Network Information

The displayed items on this screen can be described as follows:

Description — Displays the card's identification.

IP Address — The IP address assigned to the card.

Subnet Mask — Indicates the local subnet mask, such as 255.255.255.0.

Default Gateway — The gateway address provided by the WiMAX service provider.

Primary DNS Server — Address of the primary DNS server, specified in the form of 0.0.0.0.

Secondary DNS Server — Address of the secondary DNS server.

Physical Address — The physical layer MAC address of the WiMAX card.

DHCP Enable — Indicates the DHCP client status. When DHCP is enabled, the device can automatically obtain an IP address operated by the WiMAX service provider.

WiMAX Connection Statistics

The Statistics screen allows you to view information on the WiMAX connection.



Figure 3-16. Statistics Information

The displayed items on this screen can be described as follows:

Total Online Duration — The total accumulated time for all sessions since the unit was powered on.

Online Duration — The time the unit has had a link with the base station for the current session.

DL Data Volume — The downloaded data volume in Kbytes for the current online session.

UL Data Volume — The uploaded data volume in Kbytes for the current online session.

DL Data Rate — The current download data rate in Mbps.

UL Data Rate — The current upload data rate in Mbps.

CINR — The current carrier-to-interference-plus-noise ratio of the received WiMAX radio signal.

RSSI — The current receive signal strength indicator value of the received WiMAX radio signal.

Transmit Power — The current transmit power of the WiMAX radio signal.

Reset — Click the button to reset all the counters back to zero.

Tool Menu

In addition to the main configuration screens, the WCM utility has a number of other features that can be accessed from the Tool menu.

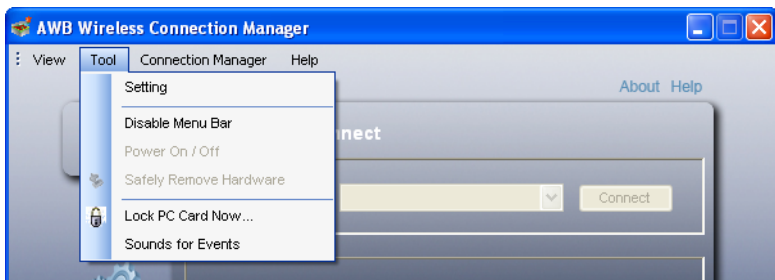


Figure 3-17. Tool Menu

Disable Menu Bar

The Disable Menu Bar option on the Tool menu hides all the top-level menu options on the screen. To enable the menu bar, use the menu from the System Tray icon.

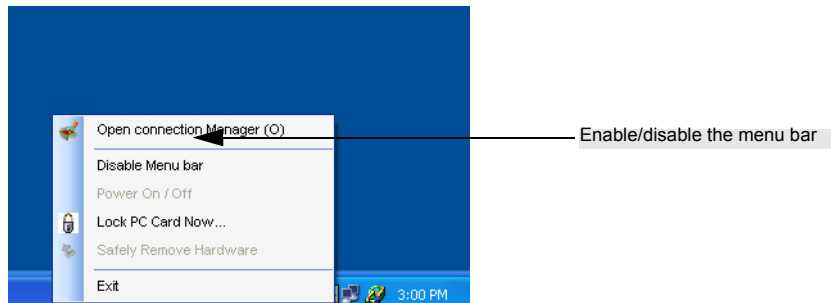


Figure 3-18. System Tray Icon Menu

Turning Power On/Off

The WiMAX card's power can be turned off when required. In some restricted environments, such as on an aircraft or in a hospital, it may be necessary to power-off the card. You can also power off the card when not in use just to reduce power consumption from the host PC.

The card can be powered on/off from the Tool menu or from the System Tray icon menu.

Safely Remove Hardware

Provides access to the Windows control for powering off and disabling the card so that it can be safely removed from host PC slot.

The Safely Remove Hardware option is available from the Tool menu and the System Tray icon menu.

Lock PC Card Now

This locks the card and prevents others from using the WiMAX service. For the lock mode to operate, you must first configure a lock mode and code on the Security tab of the Setting screen. See “Card Settings” on page 3-9.



Figure 3-19. Lock PC Card

When the lock mode is enabled, the WiMAX connection is terminated. The user needs to first unlock the application to be able to use the WiMAX service.

The Lock/Unlock option is available from the Tool menu and the System Tray icon menu.

Sounds for Events

The WCM utility allows alert sounds to be configured for certain system events. You can configure a sound for WiMAX connection established and connection lost.

In the configuration window, use the Browse button to locate a “.wav” sound file. The file may be a Windows system sound file or any other you may want to select.