

# ***FCC TEST REPORT***

**FCC ID** : V8OHW-T0420WH

**Applicant** : **DONG GUAN CITY HOWIN DECORATION PRODUCTS CO LTD**  
XiaoHe Industry Area DaoJiao Town DongGuan City GuangDong China

**Equipment Under Test (EUT) :**

Product description : Table Lamp

Model No. : HW-T0421WH, HW-T0421BK,  
HW-T0420WH, HW-T0420BK

**Standards** : FCC Part 18

**Date of Test** : April 08, 2008

**Test Engineer** : Jack.zhu

**Reviewed By** : 

PERPARED BY:

**Waltek Services (Shenzhen) Co., Ltd.**

8C, West Tower, Aidi Building, No.5003 Binhe Rd, Futian District, Shenzhen 518045,  
Guangdong, China.

Tel: 86-755-83551033

Fax: 86-755-83552400

## 2 Contents

	Page
<b>1 COVER PAGE.....</b>	<b>1</b>
<b>2 CONTENTS.....</b>	<b>2</b>
<b>3 TEST SUMMARY.....</b>	<b>3</b>
<b>4 GENERAL INFORMATION.....</b>	<b>4</b>
4.1 CLIENT INFORMATION .....	4
4.2 GENERAL DESCRIPTION OF E.U.T.....	4
4.3 DETAILS OF E.U.T. ....	4
4.4 DESCRIPTION OF SUPPORT UNITS .....	4
4.5 STANDARDS APPLICABLE FOR TESTING.....	4
4.6 TEST METHODOLOGY .....	4
4.7 TEST FACILITY.....	5
4.8 TEST LOCATION.....	5
<b>5 EQUIPMENT USED DURING TEST .....</b>	<b>6</b>
<b>6 CONDUCTED EMISSION TEST .....</b>	<b>7</b>
6.1 TEST EQUIPMENT.....	7
6.2 TEST PROCEDURE .....	7
6.3 CONDUCTED TEST SETUP .....	8
6.4 EUT OPERATING CONDITION .....	8
6.5 CONDUCTED EMISSION LIMITS .....	9
6.6 SPECTRUM ANALYZER.....	9
6.7 FREQUENCY RANGE OF MEASUREMENTS.....	10
6.8 CONDUCTED EMISSION TEST RESULT .....	10
6.8.1 Measurement Data.....	10
<b>7 PHOTOGRAPHS OF TESTING.....</b>	<b>12</b>
7.1 CONDUCTED EMISSION TEST VIEW FOR HW-T0420WH.....	12
<b>8 PHOTOGRAPHS-CONSTRUCTIONAL DETAILS .....</b>	<b>13</b>
8.1 EUT- APPEARANCE VIEW(1)FOR HW-T0421WH.....	13
8.2 EUT- APPEARANCE VIEW(2)FOR HW-T0421WH.....	13
8.3 EUT- APPEARANCE VIEW(1)FOR HW-T0421BK.....	14
8.4 EUT- APPEARANCE VIEW(2)FOR HW-T0421BK.....	14
8.5 EUT- APPEARANCE VIEW(1) FOR HW-T0420WH.....	15
8.6 EUT- APPEARANCE VIEW(2) FOR HW-T0420WH.....	15
8.7 EUT- APPEARANCE VIEW(1) FOR HW-T0420BK .....	16
8.8 EUT- APPEARANCE VIEW(2) FOR HW-T0420BK .....	16
8.9 ADAPTER - FRONT VIEW.....	17
8.10 ADAPTER – BACK VIEW.....	17
8.11 PCB-FRONT VIEW .....	18
8.12 PCB-BACK VIEW.....	18
8.13 PCB(ADAPTER)-FRONT VIEW .....	19
8.14 PCB(ADAPTER)-BACK VIEW.....	19
<b>9 FCC ID LABEL.....</b>	<b>20</b>

### 3 Test Summary

Test	Test Requirement	Test Method	Class / Severity	Result
Radiated Emission (30MHz to 1GHz)	FCC PART 18: 2003	ANSI C63.4:2003	Class B	N/A
Conducted Emission (150KHz to 30MHz)	FCC PART 18: 2003	ANSI C63.4:2003	Class B	PASS

## 4 General Information

### 4.1 Client Information

Applicant:	<b>DONG GUAN CITY HOWIN DECORATION PRODUCTS CO LTD</b>
Address of Applicant:	Xiaohe Industry Area Daojiao Town DongGuan city,Guangdong.China
Manufacturer:	<b>DONG GUAN CITY HOWIN DECORATION PRODUCTS CO LTD</b>
Address of Manufacturer:	Xiaohe Industry Area Daojiao Town DongGuan city,Guangdong.China

### 4.2 General Description of E.U.T.

Product description:	Table Lamp
Model No.:	HW-T0421WH, HW-T0421BK HW-T0420WH, HW-T0420BK

### 4.3 Details of E.U.T.

Power Supply:	120VAC / 60Hz
---------------	---------------

The PCB and adapters of the four models are the same except that the appearance is different.

### 4.4 Description of Support Units

The EUT has been tested as an independent unit.

### 4.5 Standards Applicable for Testing

The customer requested FCC tests for a Table Lamp. The standards used were FCC Part18.

### 4.6 Test Methodology

All measurements contained in this report are conducted with FCC Measurement Procedure MP-5, technical requirements for Methods of Measurement of Radio-Noise Emission from ISM Equipment.

#### 4.7 Test Facility

The test facility is recognized, certified, or accredited by the following organizations:

- **FCC – Registration No.: 759397**  
Solid Industrial (Shenzhen) Co., Ltd. EMC Laboratory has been registered and fully described in a report filed with the (FCC) Federal Communications Commission. The acceptance letter from the FCC is maintained in our files. Registration 759397, December 28, 2006.

#### 4.8 Test Location

All Emissions tests were performed at:-

Solid Industrial (Shenzhen) Co., Ltd. at 333 Bulong Highway Buji Longgang, Shenzhen, Guangdong, China.

## 5 Equipment Used during Test

	<b>Conducted Emission Test</b>					
<b>Item</b>	<b>Test Equipment</b>	<b>Manufacturer</b>	<b>Model No.</b>	<b>Series No.</b>	<b>Specification</b>	<b>Last Cal.</b>
<b>1</b>	EMI Test Receiver	Rohde&schwarz	ESPI3	100038	9 kHz to 3000 MHz	2007.08
<b>2</b>	Artificial Mains	Rohde&schwarz	ESH2-Z5	100028	9kHz-30 MHz, Continuous Current 4*25 A	2007.08
<b>3</b>	Pulse Limiter	Rohde&schwarz	ESHSZ2	100044	N/A	2007.08
<b>4</b>	EMI Test Software	Rohde&schwarz	ESK1	N/A	Version1.60	N/A
<b>5</b>	LISN	Kyoritsu	KNW-403D	N/A	9kHz-30 MHz	2007-08

## 6 Conducted Emission Test

Product Name:	Table Lamp
Test Requirement:	FCC Part 18
Test Method:	Based on FCC Part 18
Test Date:	April 08, 2008
Frequency Range:	150kHz to 30MHz
Class:	Class B
Detector:	Peak for pre-scan (9kHz Resolution Bandwidth) Quasi-Peak & Average if maximised peak within 6dB of Average Limit

### 6.1 Test Equipment

Please refer to Section 5 this report.

### 6.2 Test Procedure

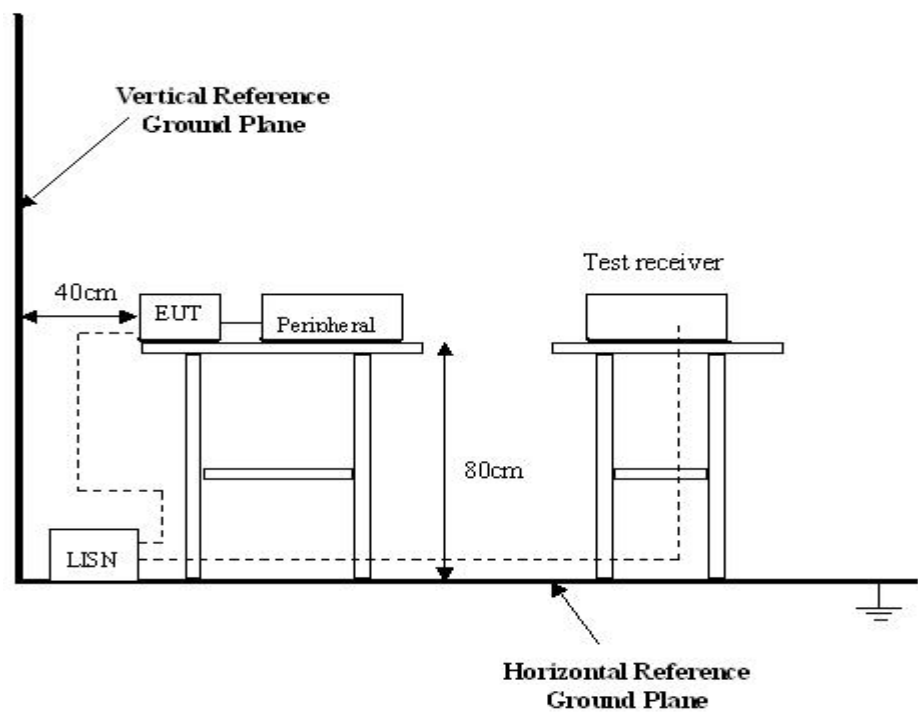
1. During the conducted emission test, the power cord of the EUT is connected to the auxiliary outlet of the LISN.
2. The EUT was tested according to FCC MP-5. The frequency spectrum from 150kHz to 30MHz was investigated.
3. The maximised peak emissions from the EUT was scanned and measured for both the Live and Neutral Lines. Quasi-peak & average measurements were performed if peak emissions were within 6dB of the average limit line.

6.3 Conducted Test Setup

The conducted emission tests were performed using the setup accordance with the FCC MP-5 measurement procedure.

The EUT is tested independently.

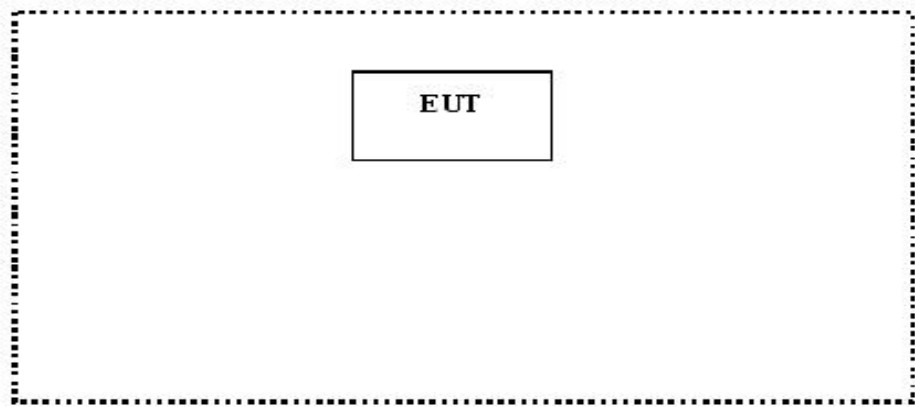
The power supply used by the EUT is connected to a 120VAC / 60Hz power source.



6.4 EUT Operating Condition

Operating condition is according to FCC MP-5.

- A. Setup the EUT and simulators as shown on follow.
- B. Enable RF signal and confirm EUT active.
- C. Modulate output capacity of EUT up to specification.



## 6.5 Conducted Emission Limits

Frequency of Emission (MHz)	Conducted Limit (dBuV)- Quasi-peak
0.15— 0.5	66-56
0.5 — 5.0	56
5.0 — 30	60

**Note:** In the above limits, the tighter limit applies at the band edges.

## 6.6 Spectrum Analyzer

The spectrum analyzer is configured during the conduction test is as follows:

Start Frequency..... 150 kHz  
Stop Frequency ..... 30 MHz  
Sweep Speed..... Auto  
IF Bandwidth ..... 9 kHz  
Video Bandwidth ..... 100 kHz  
Quasi-Peak Adaptor Bandwidth..... 9 kHz  
Quasi-Peak Adaptor Mode..... Normal

## 6.7 Frequency Range Of Measurements

Frequency band in which device operates (MHz)	Range of frequency measurements	
	Lowest frequency	Highest frequency
Below 1.705	Lowest frequency generated in the device, but not lower than 9 kHz.	30MHz.
1.705 to 30	Lowest frequency generated in the device, but not lower than 9 kHz.	400MHz.
30 to 500	Lowest frequency generated in the device or 25MHz, whichever is lower.	Tenth harmonic or 1,000MHz, whichever is higher.
500 to 1,000	Lowest frequency generated in the device or 100MHz, whichever is lower.	Tenth harmonic.
Above 1,000	do	Tenth harmonic or highest detectable emission.

## 6.8 Conducted Emission Test Result

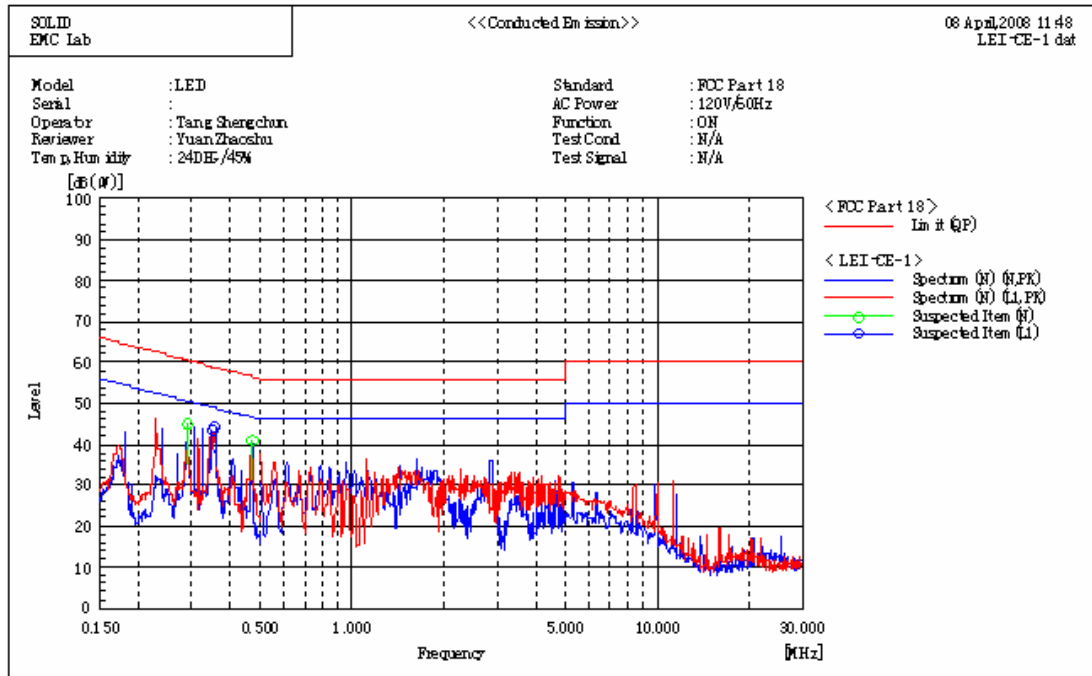
Test Item:	Conducted Emission Test
Test Voltage:	120VAC / 60Hz
Test Mode:	Normal
Temperature:	24 °C
Humidity:	52%RH
Test Result:	PASS

### 6.8.1 Measurement Data

An initial pre-scan was performed on the live and neutral lines.

No further quasi-peak or average measurements were performed since no peak emissions were detected within 10dB line below the average limit.

Please refer to the following peak scan graph for reference.



## Spectrum Selection

## --- N Phase ---

No.	Frequency	Reading	c. f	Result	Limit	Limit	Margin	Margin
	[MHz]	[dB (μ V)]	[dB]	PK	QP	AV	QP	AV
				[dB (μ V)]	[dB (μ V)]	[dB (μ V)]	[dB]	[dB]
1	0.288	54.8	-9.9	44.9	60.6	50.6	15.7	5.7
2	0.472	51.2	-10.3	40.9	56.5	46.5	15.6	5.6

## --- L1 Phase ---

No.	Frequency	Reading	c. f	Result	Limit	Limit	Margin	Margin
	[MHz]	[dB (μ V)]	[dB]	PK	QP	AV	QP	AV
				[dB (μ V)]	[dB (μ V)]	[dB (μ V)]	[dB]	[dB]
1	0.350	53.4	-10.2	43.2	59.0	49.0	15.8	5.8
2	0.356	54.4	-10.2	44.2	58.8	48.8	14.6	4.6

Freq. MHz	Line	QP Level dBuV	Limit dBuV	Margin dB	AV Level dBuV	Limit dBuV	Margin dB
0.350	Live	43.2	59.0	15.8	43.2	49.0	5.8
0.356	Live	44.2	58.8	14.6	44.2	48.8	4.6
0.288	Neutral	44.9	60.6	15.7	44.9	50.6	5.7
0.472	Neutral	40.9	56.5	15.6	40.9	46.5	5.6

## **7 Photographs of Testing**

### **7.1 Conducted Emission Test View for HW-T0420WH**



## 8 Photographs-Constructional Details

### 8.1 EUT- Appearance View(1)for HW-T0421WH



### 8.2 EUT- Appearance View(2)for HW-T0421WH



### 8.3 EUT- Appearance View(1)for HW-T0421BK



### 8.4 EUT- Appearance View(2)for HW-T0421BK



### 8.5 EUT- Appearance View(1) for HW-T0420WH



### 8.6 EUT- Appearance View(2) for HW-T0420WH



**8.7 EUT- Appearance View(1) for HW-T0420BK**



**8.8 EUT- Appearance View(2) for HW-T0420BK**



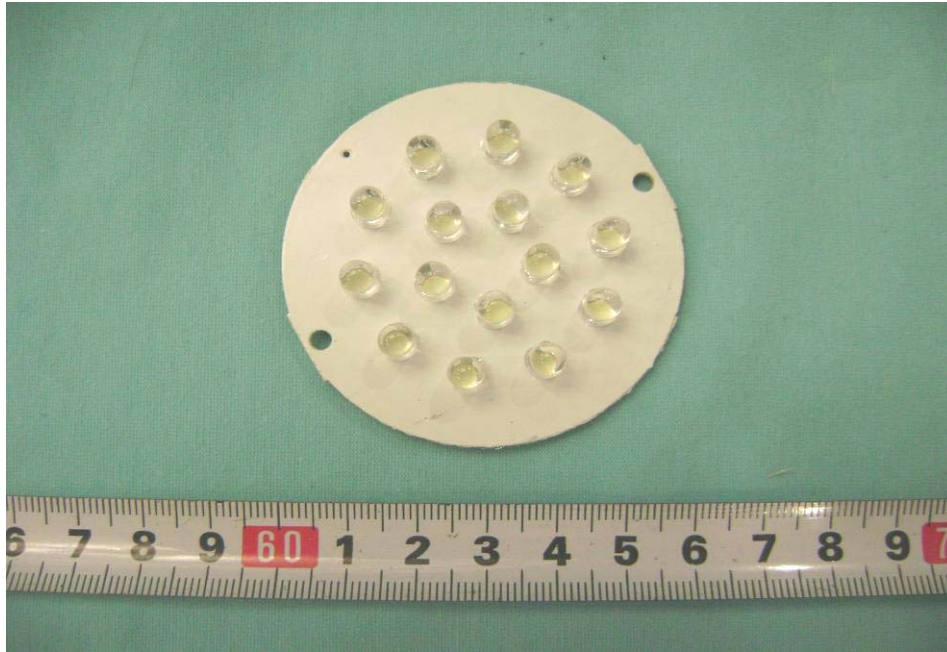
## 8.9 Adapter - Front View



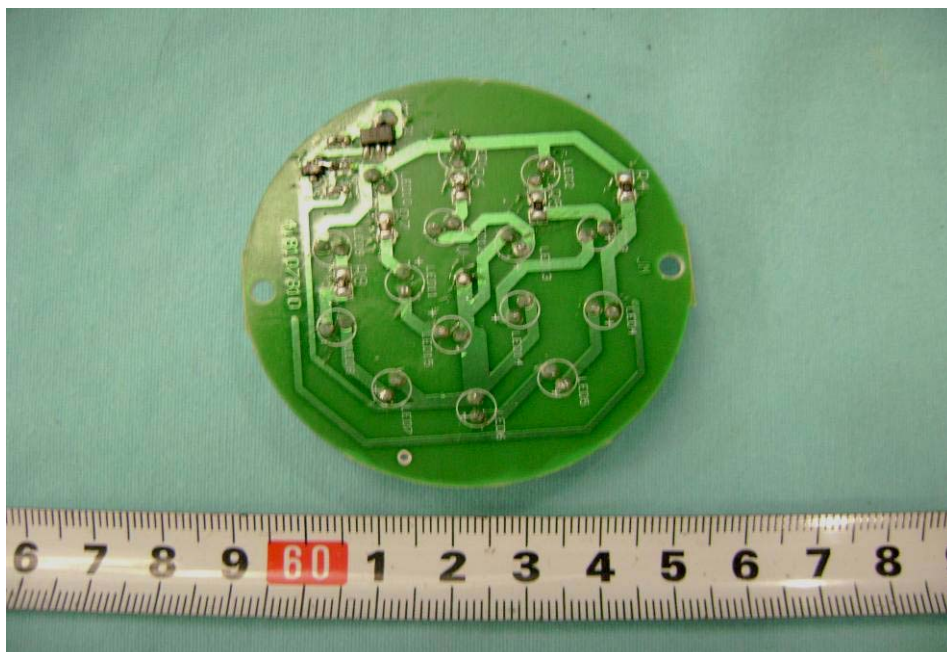
## 8.10 Adapter – Back View



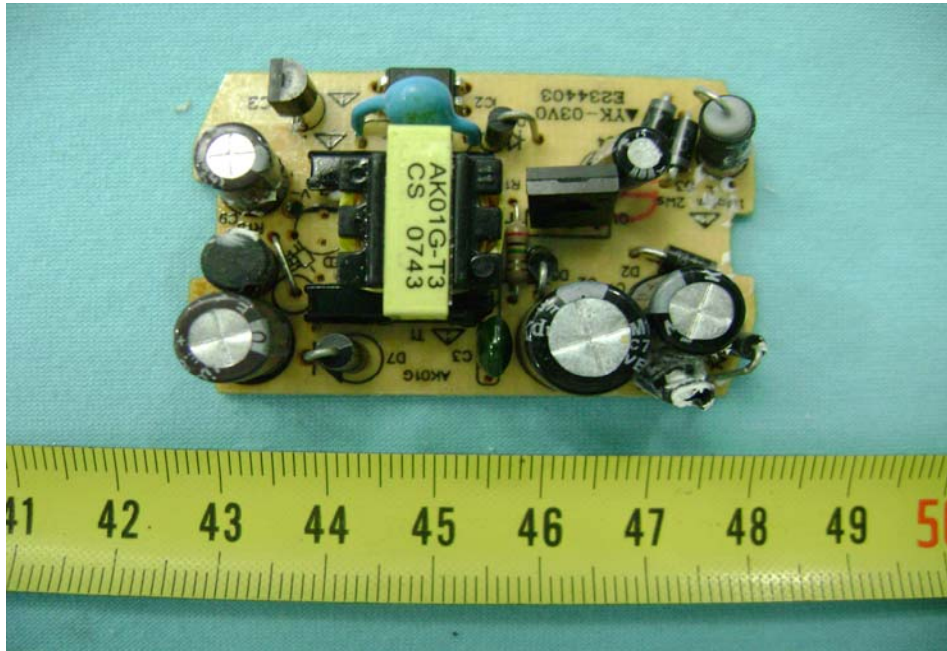
### 8.11 PCB-Front View



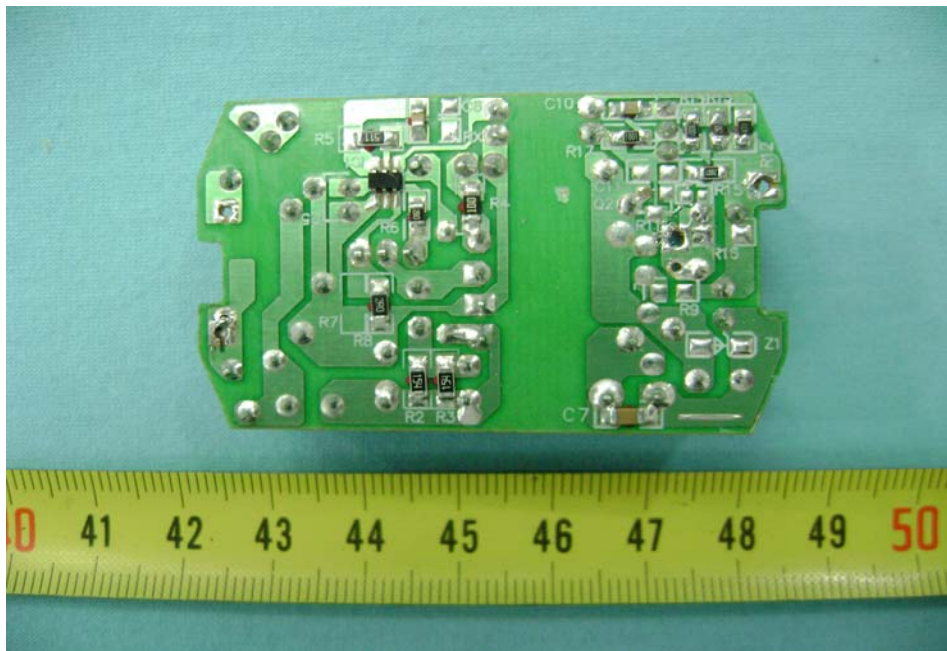
### 8.12 PCB-Back View



### 8.13 PCB(Adapter)-Front View



### 8.14 PCB(Adapter)-Back View



## 9 FCC ID Label

This device complies with Part 18 of the FCC Rules. The Label must not be a stick-on paper. The Label on these products must be permanently affixed to the product and readily visible at the time of purchase and must last the expected lifetime of the equipment not be readily detachable.

Proposed Label Location on EUT  
EUT Top View/ proposed FCC Mark Location

