

Installation Guide

AC1200 Wireless Hotspot Router

Model: W15E

Packing List

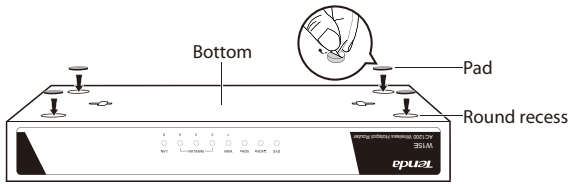
- Wireless Hotspot Router x 1
- Power adapter x 1
- Ethernet cable x 1
- Pad x 4
- Installation guide x 1

If any item is missing, or damaged, please keep the original package and contact the local reseller or distributor immediately.
Before using this router, please read this Installation Guide carefully for proper and quick installation.
For detailed product information or more functions, please visit <http://www.tendacn.com>.

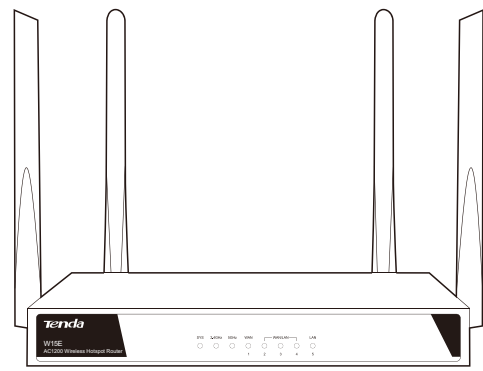
Step 1: Connecting the Router

1. Installing Router

- Place the router upside down on the workbench, and paste the four footpad stickers onto the round recesses at the bottom of the router.



- Place the router right side up on the workbench, and adjust the position of the antennas as below.

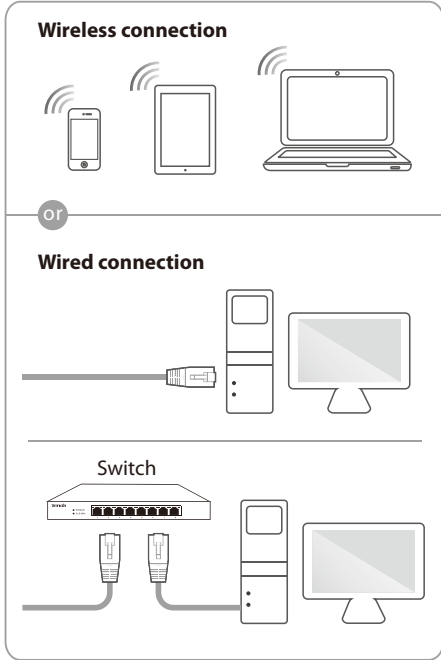
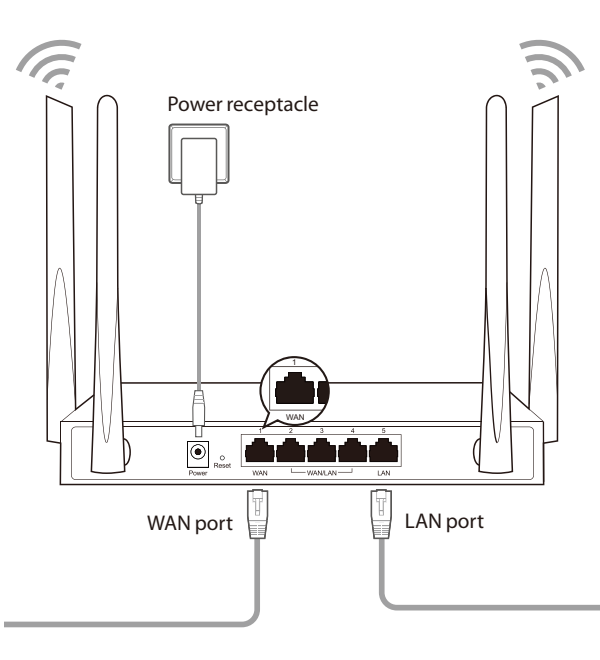
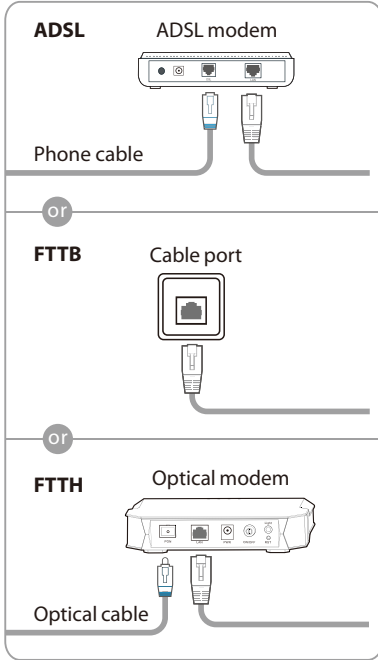


2. Connecting to WAN Port

For ADSL scenario, connect the Ethernet cable that has been connected to the ADSL modem to the WAN port of the router.

For FTTB scenario, connect the Ethernet cable provided by the ISP to the WAN port of the router.

For FTTH scenario, connect the Ethernet cable that has been connected to the optical modem to the WAN port of the router.

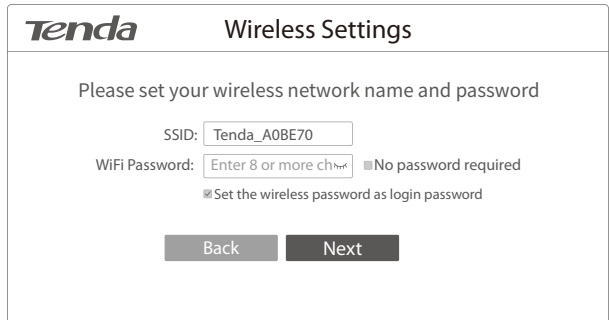


Step 2: Configuring the Router

- Start a browser, enter **tendawifi.com** or **192.168.0.1**, and press Enter.

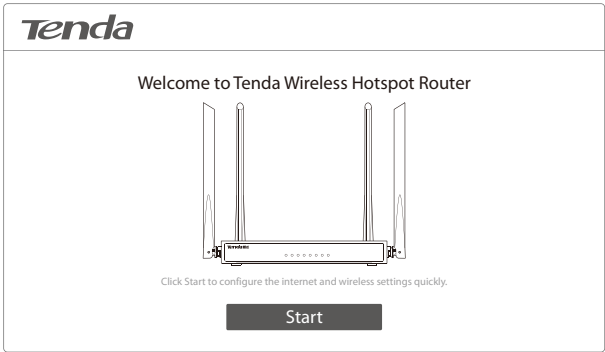


- Set your wireless network name and Wi-Fi password, and click **Next**.

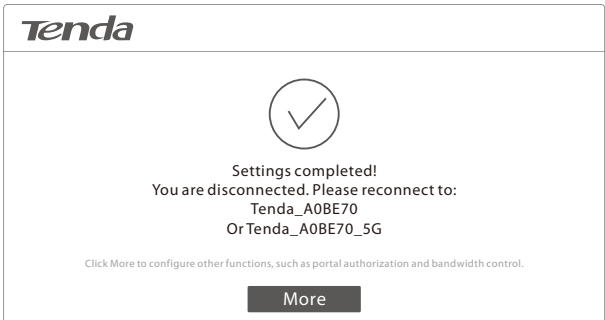


By default, the **Set the wireless password as login password** is enabled. You can also disable this option and customize your login password.

- Click **Start**.

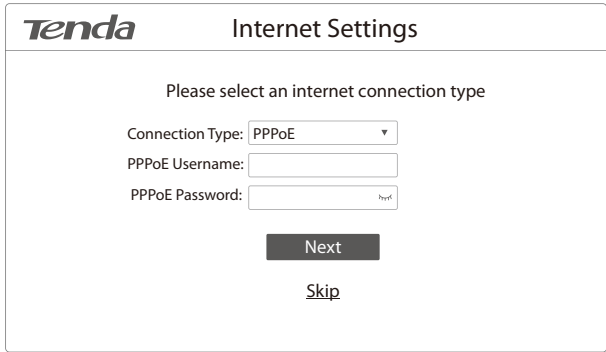


Wait a second for the completion of settings.



For more functions, visit <http://www.tendacn.com> to download user guide of the router.

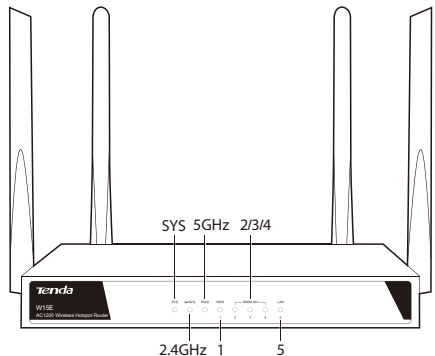
- The system automatically detects your internet connection type. Enter related values according to the on-screen instructions, and click **Next**.



Tips

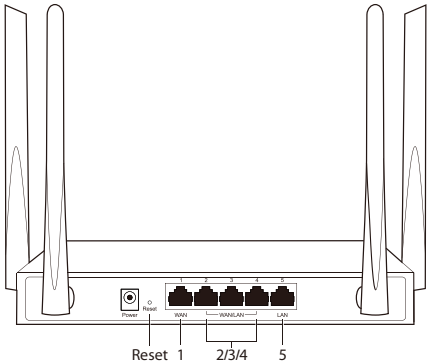
- By default, the wireless network has no password. You need to reconnect to the Wi-Fi signal once the SSID or WiFi password is changed.
- By default, the SSID of the 2.4 GHz network is Tenda_XXXXXX (see the label at the bottom of the router), and the SSID of the 5 GHz network is Tenda_XXXXXX_5G.
- The computer can connect to the Wi-Fi signal only when a wireless adapter is installed and works properly.

LED Indicator



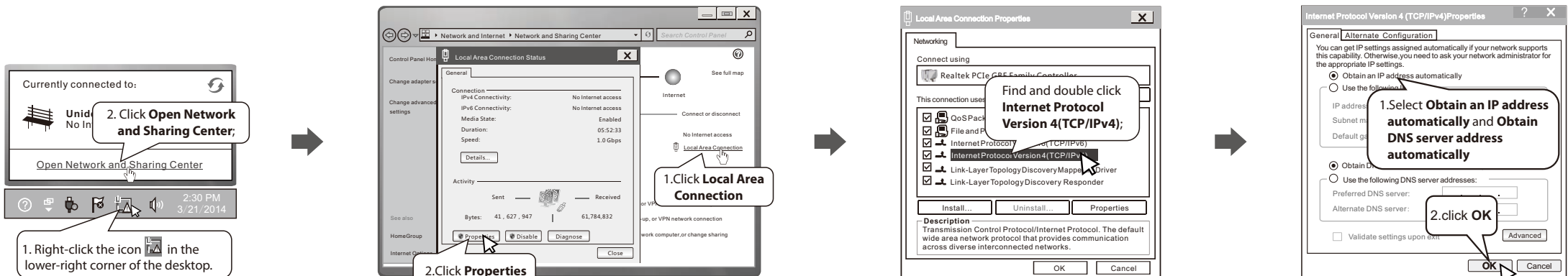
LED Indicators	Description
SYS	Solid on: The system is faulty; Blinking: The system works properly; Off: The system is not powered on.
2.4GHz	Solid on: The 2.4 GHz Wi-Fi is enabled without data transmission; Blinking: Data is transmitted over 2.4 GHz; Off: The 2.4 GHz Wi-Fi is disabled.
5GHz	Solid on: The 5 GHz Wi-Fi is enabled without data transmission; Blinking: Data is transmitted over 5 GHz; Off: The 5 GHz Wi-Fi is disabled.
1	WAN port indicator Solid on: No data is transmitted over WAN port 1. Blinking: Data is transmitted over WAN port 1. Off: No device connects to WAN port 1, or connection is faulty.
2/3/4	WAN/LAN port 2/3/4 indicators (By default, they are LAN port indicators.) Solid on: No data is transmitted. Blinking: Data is transmitted. Off: No device connects to these ports, or connection is faulty.
5	LAN port indicator Solid on: No data is transmitted over LAN port 5. Blinking: Data is transmitted over LAN port 5. Off: No device connects to LAN port 5, or connection is faulty.

Port, and Button

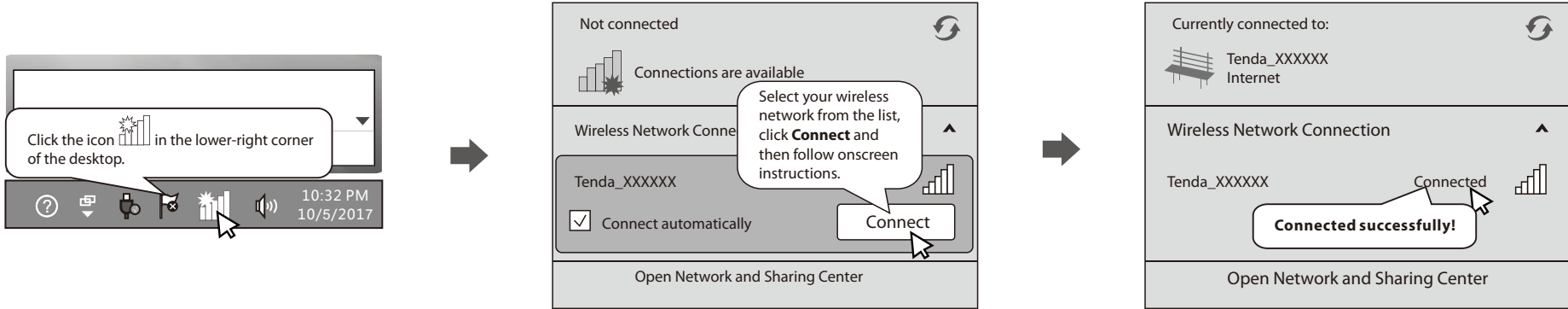


Port or Button	Description
Reset	Reset button. After the router is powered on, use a paper clip to hold down the Reset button for 8 seconds to restore the device to factory settings.
1	It is the WAN port used to connect to the internet using Ethernet cable. The Ethernet cable may be a cable connected to the ADSL modem, optical modem, or cable modem, or a cable provided by the ISP.
2/3/4	They can be used either as WAN ports or LAN ports. By default, they are LAN ports. You can login to the router web UI to change them to WAN ports.
5	It is the LAN port used to connect to a device such as a computer or switch.

Appendix 1: Configure Your Computer (Example: Windows7)



Appendix 2: Connection WiFi (Example: Windows 8)



FAQ

Q: I cannot login to the web UI of the router after entering www.tendawifi.com or 192.168.0.1. What should I do?

- Ensure that the Ethernet cables are correctly connected.
- If you connect your computer to the router using Ethernet cable, ensure that the Obtain an IP address automatically of your computer is selected.
- If you use wireless devices, such as smart phones, to connect to the Wi-Fi, ensure that the wireless devices have been successfully connected to the Wi-Fi.
- Clear the cache of your web browser or replace the web browser, and try to login again.
- Use another computer or smart phone and try to login again.
- Press the Reset button with a paper clip for 8 seconds to restore the device to factory settings, and try to login again.

Q: I can scan the SSID, but cannot connect to it. What should I do?

- Verify that the WiFi password is correct.
- Clear the cache of your wireless clients (such as smart phone and notebook), and try again.
- Connect your computer to the router using Ethernet cable, and login to the web UI of the router. Change the SSID or Wi-Fi password, and try to reconnect and login again.

Q: The Wi-Fi signal is successfully connected, but I still cannot access the internet. What should I do?

- Verify that you connect to the correct SSID.
- Access the System Info page of the router web UI, and verify that the connection status of corresponding port is Connected.

Q: What should I do if I forget the Wi-Fi password?

- Connect your computer to the router using Ethernet cable, and login to the web UI of the router. Choose Wireless > Basic, view or reset the Wi-Fi password.
- If the above method does not work, power on the router, press the Reset button with a paper clip for 8 seconds to restore the device to factory settings. In this case, you need to reconfigure the internet settings and WiFi password.

Safety and Emission Statement



CE Mark Warning

This is a Class B product. In a domestic environment, this product may cause radio interference, in which case the user may be required to take adequate measures. This equipment should be installed and operated with minimum distance 20cm between the radiator & your body. The mains plug is used as disconnect device, the disconnect device shall remain readily operable.

NOTE: (1) The manufacturer is not responsible for any radio or TV interference caused by unauthorized modifications to this equipment. (2) To avoid unnecessary radiation interference, it is recommended to use a shielded RJ45 cable.

Declaration of Conformity

Hereby, SHENZHEN TENDA TECHNOLOGY CO., LTD. declares that the radio equipment type W15E is in compliance with Directive 2014/53/EU. The full text of the EU declaration of conformity is available at the following internet address: <http://www.tendacn.com/en/service/page/ce.html>
Operate Frequency: 2400-2483.5MHz; 5150-5250MHz
EIRP Power (Max.): 2.4GHz: 19.8dBm; 5.1GHz: 22.5dBm
Software Version: V15.11.0.5



RECYCLING

This product bears the selective sorting symbol for Waste electrical and electronic equipment (WEEE). This means that this product must be handled pursuant to European directive 2012/19/EU in order to be recycled or dismantled to minimize its impact on the environment.

User has the choice to give his product to a competent recycling organization or to the retailer when he buys new electrical or electronic equipment.



Caution:

Adapter Model: BN036-A12012E
Manufacturer: SHENZHEN HEWEISHUN NETWORK TECHNOLOGY CO., LTD
Input: 100-240V~, 50/60Hz, 0.4A
DC Voltage



FCC Statement

This equipment has been tested and found to comply with the limits for a Class B digital device, pursuant to Part 15 of the FCC Rules. These limits are designed to provide reasonable protection against harmful interference in a residential installation. This equipment generates, uses and can radiate radio frequency energy and, if not installed and used in accordance with the instructions, may cause harmful interference to radio communications. However, there is no guarantee that interference will not occur in a particular installation. If this equipment does cause harmful interference to radio or television reception, which can be determined by turning the equipment off and on, the user is encouraged to try to correct the interference by one or more of the following measures:

- Reorient or relocate the receiving antenna.
- Increase the separation between the equipment and receiver.
- Connect the equipment into an outlet on a circuit different from that to which the receiver is connected.
- Consult the dealer or an experienced radio/TV technician for help.

This device complies with Part 15 of the FCC Rules. Operation is subject to the following two conditions: (1) This device may not cause harmful interference, and (2) this device must accept any interference received, including interference that may cause undesired operation.

Radiation Exposure Statement

This equipment should be installed and operated with minimum distance 20cm between the radiator & your body.

Caution:

Any changes or modifications not expressly approved by the party responsible for compliance could void the user's authority to operate this equipment. This transmitter must not be co-located or operating in conjunction with any other antenna or transmitter.

NOTE: (1) The manufacturer is not responsible for any radio or TV interference caused by unauthorized modifications to this equipment. (2) To avoid unnecessary radiation interference, it is recommended to use a shielded RJ45 cable.

Technical Support

United States Hotline: 1-800-570-5892
Canada Hotline: 1-888-998-8966
Hong Kong Hotline: 00852-81931998
Skype: Tendasz
Website: <http://www.tendacn.com>
E-mail: support@tenda.com.cn

Address Info:

6-8 Floor, Tower E3, No.1001, Zhongshanyuan Road, Nanshan District, Shenzhen, China. 518052

* Operating temperature: 0°C ~ 40°C;
operating humidity: 10%RH ~ 90%RH (non-condensing)

