

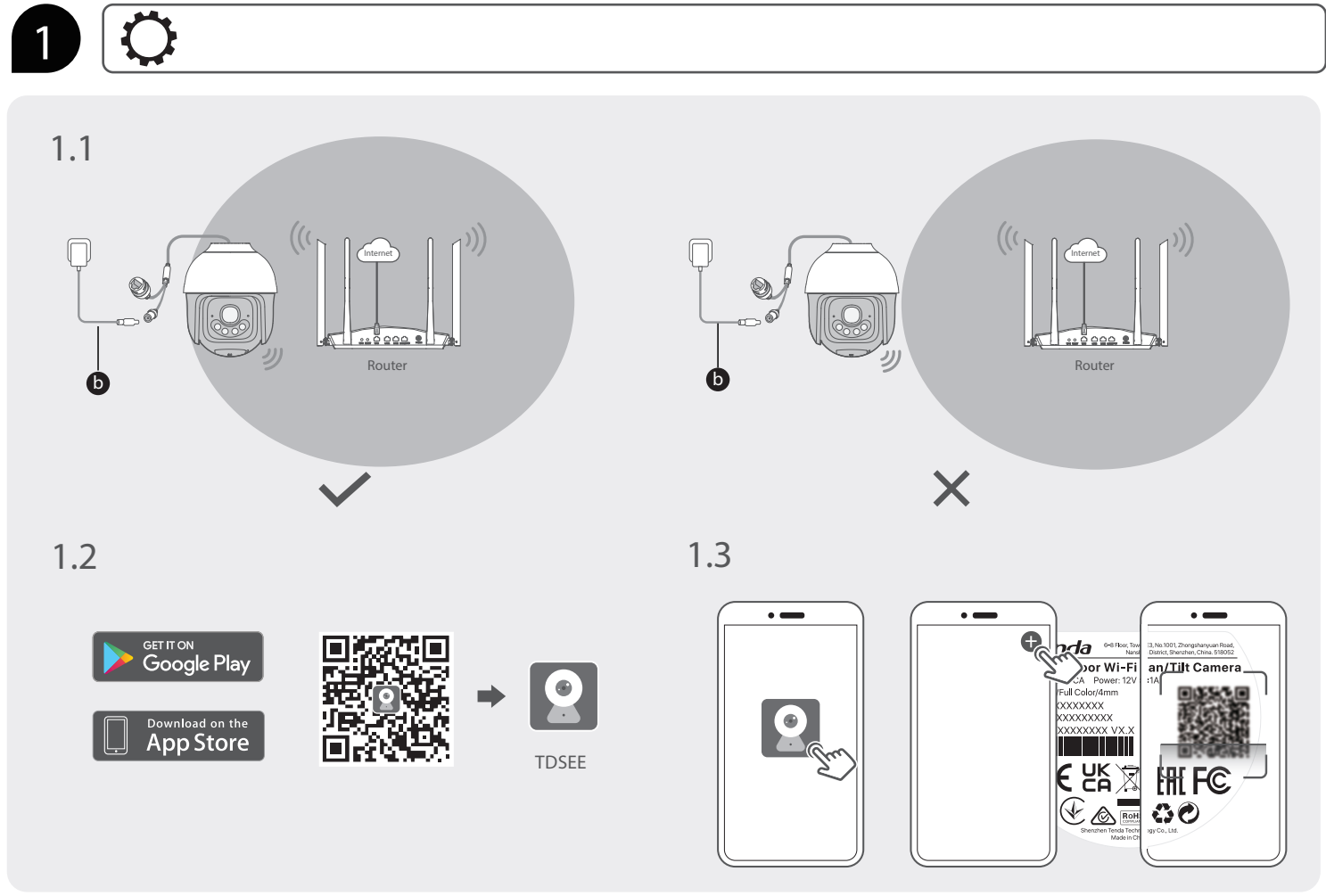
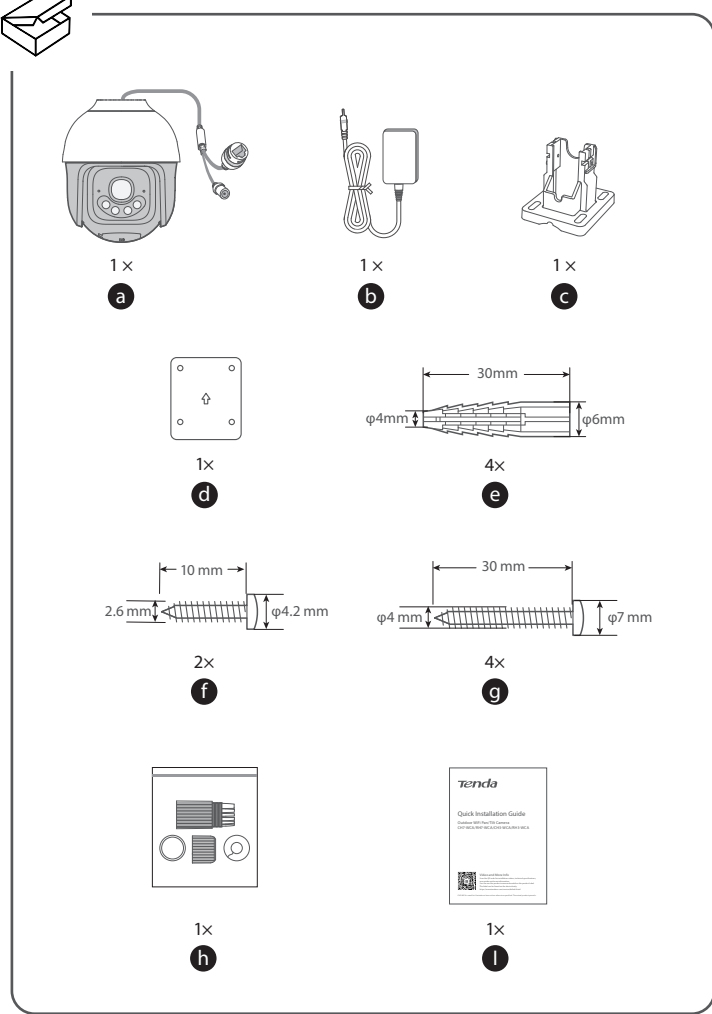
Quick Installation Guide

Outdoor Wi-Fi Pan/Tilt Camera
CH7-WCA/RH7-WCA/CH3-WCA/RH3-WCA
CH7W/TC3H15C



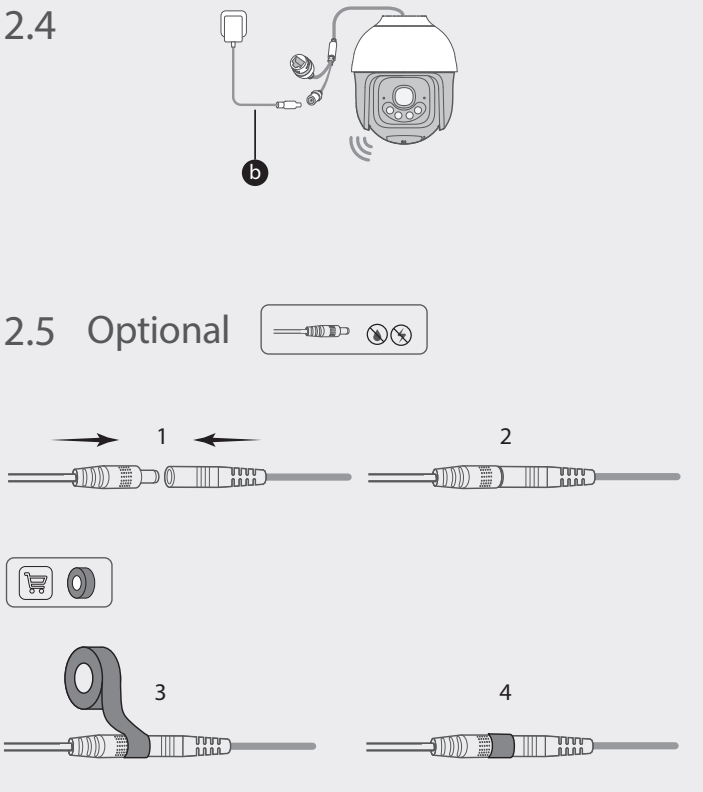
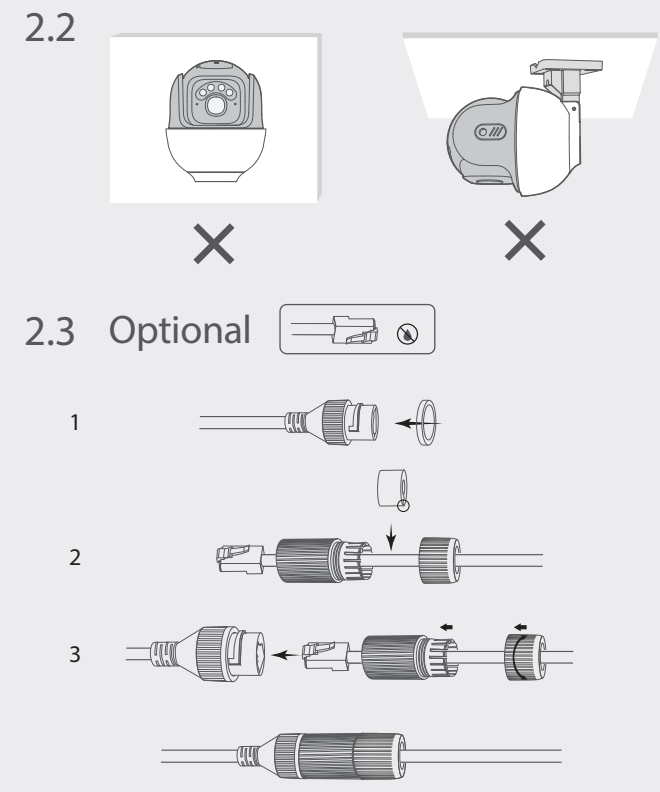
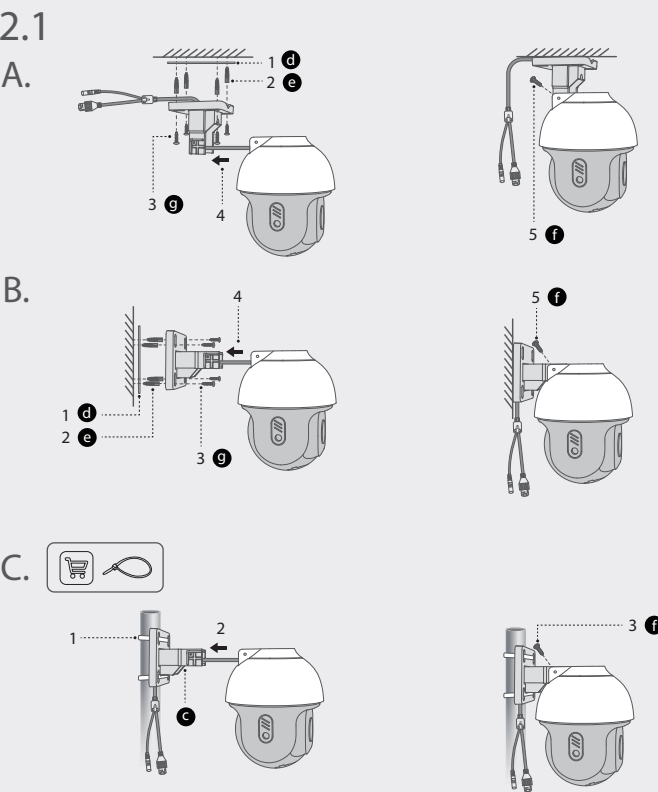
Video and More Info
Scan the QR code for installation videos, technical specifications, user guides and more information. You can see the product name and model on the product label. The label can be found on the device body.
<https://www.tendacn.com/service/default.html>

CH7-WCA is used for illustrations here unless otherwise specified. The actual product prevails.



2

Tips
- Make sure the ceiling is strong enough to withstand three times the weight of the camera.
- Install the camera where the router has good Wi-Fi signal.



Optional Use a web browser to access the camera

1. Connect the computer to the router that is connected to the camera.
2. Set the IP address of the computer to an unused one belonging to the same network segment as the IP address of the camera but different from the IP address of the camera.

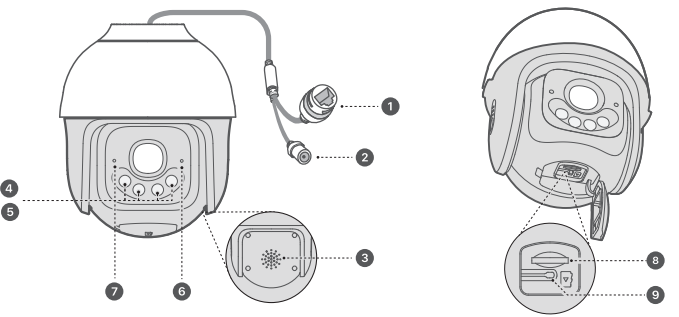
By default, the login IP address of the camera is 192.168.1.203, and the DHCP function is enabled. If there is a DHCP server in the network, the IP address of the camera may be changed. Refer to the actual IP address assigned to the camera by the DHCP server.

3. Start a browser and enter the IP address of the camera in the address bar to access the login page. The default user name and password are admin and admin123456.

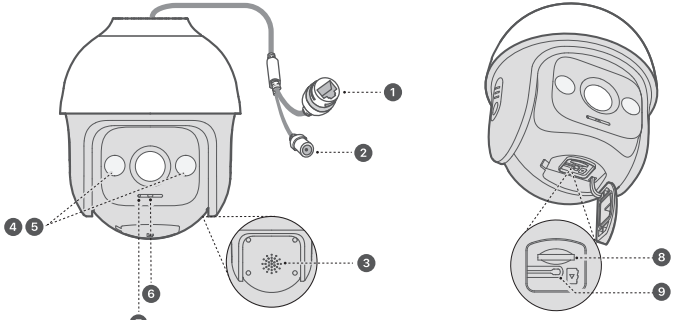
Tips
To ensure your privacy and security, change your login password promptly after logging in to the web UI.

Appearance

CH7-WCA/RH7-WCA



CH3-WCA/RH3-WCA



1	Ethernet port 10/100 Mbps auto-negotiation Ethernet port. Used for connecting such devices as the router, switch and computer.
2	Power jack Used to connect to the included power adapter.
3	Speaker
4 5	Fill Light
6	Indicator Solid red: Initializing and starting. Blinking red slowly: Disconnected from the network. Blinking red quickly: Connecting to the network. Solid blue: Connected to the network. Blinking blue slowly: Upgrading. Blinking blue quickly: Waiting to connect to the network.
7	Microphone
8	Micro SD card slot (Behind the cover) Insert the Micro SD card (self-prepared) to store the monitoring videos.
9	Reset button (Behind the cover) Hold down the reset button for about 5 seconds and release it after the indicator blinks blue quickly or you hear a prompt tone. The camera is reset to factory settings.

FAQ

- Q1. What should I do if I failed to add the camera?
- A1. Try the following solutions:
- Ensure that the router is connected to the internet successfully.
 - The camera only supports 2.4 GHz Wi-Fi network. When adding the camera, you need to connect the smartphone to a 2.4 GHz Wi-Fi network.
 - Do not hide the Wi-Fi network of the router when adding the camera (After adding the camera successfully, you can hide the Wi-Fi network).
 - Confirm whether the indicator of the camera blinks blue quickly. If not, reset the camera and configure it again.
- Reset method: Hold down the Reset button for about 5 seconds and release it after the indicator blinks blue quickly or you hear a prompt tone. The camera is reset.
- Q2. What should I do when the video preview is not smooth?
- A2. Try the following solutions:
- Check if the Wi-Fi network of the router is smooth.
 - Take the router closer to the camera.
 - When previewing the video with cellular mobile data, make sure that the internet connection of the smartphone is smooth.
 - Fluent and HD are supported for video preview. You can adjust the video clarity according to the internet status.

- Q3. How to view the videos stored in the Micro SD card of the camera on the computer?
- A3. If you remove the Micro SD card installed in the camera and view the videos from your computer, it is recommended to use VLC media player or Potplayer to play the videos.

- Q4. How to store the videos?
- A4. Try the following solutions:
- Method 1: Install the Micro SD card on the camera. The recording mode of the Micro SD card includes Alarm Recording and All Day Recording. By default, the recording mode is Alarm Recording. You can modify the recording mode according to the actual conditions.
- Method 2: Subscribe to the Cloud Storage Service on TDSEE App. Procedure: Run the TDSEE App, choose the camera on the homepage, and then tap Cloud Storage in the lower left corner. You can enjoy free cloud storage service (7-day loop detection recording) for 3 months upon the first activation.
- Method 3: Connect the camera to the NVR. The camera supports the ONVIF protocol and can be added to the NVR either wired or wireless method for recording storage. The default user name and password of the camera are admin and admin123456 respectively, and the password can be changed on the web UI. The specific configuration method of the NVR is subject to the manufacturer's instructions.

Safety Precautions

- Before operating, read and follow these precautions to prevent accidents.
- For ceiling/wall/pole mounting, the camera is suitable for mounting at heights >2m.
 - The camera is used outdoors. The power adapter is used indoors.
 - Do not use the device in a place where wireless devices are not allowed.
 - Please use the included power adapter.
 - The mains plug is used as the disconnect device, and shall remain readily operable.
 - The power socket shall be installed near the device and easily accessible.
 - Device operating environment: Temperature: -30°C ~ +60°C (-22°F ~ 140°F); Humidity: (10% ~ 95%) RH, non-condensing; Power adapter operating environment: Temperature: 0°C ~ 40°C (32°F ~ 104°F); Humidity: (5% ~ 95%) RH, non-condensing.
 - Keep the device away from fire, high electric field, high magnetic field, and inflammable and explosive items.
 - Unplug this device and disconnect all cables during lightning storms or when the device is unused for long periods.
 - Do not use the power adapter if its plug or cord is damaged.
 - If such phenomena as smoke, abnormal sound or smell appear when you use the device, immediately stop using it and disconnect its power supply, unplug all connected cables, and contact the after-sales service personnel.
 - Disassembling or modifying the device or its accessories without authorization voids the warranty, and might cause safety hazards.
 - Refer all servicing to qualified service personnel.
 - Disconnect the power source during servicing.
 - Keep this device out of reach of children to prevent children from using it as a toy and causing personal injury.
 - The device's marking information can be found on its surface.
- For the latest safety precautions, see Safety and Regulatory Information on www.tendacn.com.

CE Mark Warning This is a Class B product. In a domestic environment, this product may cause radio interference, in which case the user may be required to take adequate measures. This equipment should be installed and operated with minimum distance 20cm between the device and your body. NOTE: (1) The manufacturer is not responsible for any radio or TV interference caused by unauthorized modifications to this equipment. (2) To avoid unnecessary radiation interference, it is recommended to use a shielded RJ45 cable. Declaration of Conformity Hereby, SHENZHEN TENDA TECHNOLOGY CO., LTD. declares that the device (camera) is in compliance with Directive 2014/53/EU. The full text of the EU Declaration of Conformity is available at the following internet address: https://www.tendacn.com/download/list-9.html	Operating Frequency/Max Output Power English: Operating Frequency/Max Output Power Italiano: Frequenza operativa/Potenza di uscita massima Français: Fréquence de fonctionnement/Puissance de sortie maximale Español: Frecuencia operativa/Potencia de salida máxima Deutsch: Betriebsfrequenz/Max. Ausgangsleistung Polski: Częstotliwość pracy /Maksymalna moc wyjściowa Nederlands: Bedrijfsfrequentie /Maximaal uitgangsvermogen Čeština: Provozní frekvence/Maximální výstupní výkon Română: Frecvența de funcționare/Puterea maximă de ieșire Ελληνικά: Συχνότητα λειτουργίας/Μέγιστη ισχύς Εξόδου Magyar: Működési frekvencia/Maximális kimeneti teljesítmény Български: Работна честота/максимална изходна мощност Eesti: Toosagedus/Max väljundvõimsus Dansk: Driftsfrekvens/Maks. Udgangseffekt Suomi: Toimintataajuus/maksimaaliteho Hrvatski: Radna frekvencija/Maksimalna izlazna snaga Latviešu: Operējošās frekvences/Maksimālā jauda Lietuvių: Darbinio dažnis /maksimali išėjimo galia Slovenščina: Delovna frekvenca/Največja izhodna moč Türkçe: Çalışma Frekansı/Maks. Çıkış Gücü Русский: Рабочая частота/макс. выходная мощность عربي: تردد التشغيل / الحد الأقصى لطاقة الإخراج
2412MHz-2472MHz/ 20dBm	

FCC Statement This equipment has been tested and found to comply with the limits for a Class B digital device, pursuant to Part 15 of the FCC Rules. These limits are designed to provide reasonable protection against harmful interference in a residential installation. This equipment generates, uses and can radiate radio frequency energy and, if not installed and used in accordance with the instructions, may cause harmful interference to radio communications. However, there is no guarantee that interference will not occur in a particular installation. If this equipment does cause harmful interference to radio or television reception, which can be determined by turning the equipment off and on, the user is encouraged to try to correct the interference by one or more of the following measures: — Reorient or relocate the receiving antenna. — Increase the separation between the equipment and receiver. — Connect the equipment into an outlet on a circuit different from that to which the receiver is connected. — Consult the dealer or an experienced radio/TV technician for help. Operation is subject to the following two conditions: (1) this device may not cause harmful interference, and (2) this device must accept any interference received, including interference that may cause undesired operation. Radiation Exposure Statement This device complies with FCC radiation exposure limits set forth for an uncontrolled environment and it also complies with Part 15 of the FCC RF Rules. This equipment should be installed and operated with minimum distance 20cm between the device and your body. This transmitter must not be co-located or operating in conjunction with any other antenna or transmitter. Caution: Any changes or modifications not expressly approved by the party responsible for compliance could void the user's authority to operate this equipment. Operating frequency: 2412-2462MHz NOTE: (1) The manufacturer is not responsible for any radio or TV interference caused by unauthorized modifications to this equipment. (2) To avoid unnecessary radiation interference, it is recommended to use a shielded RJ45 cable.	RECYCLING This product bears the selective sorting symbol for Waste Electrical and Electronic Equipment (WEEE). This means that this product must be handled pursuant to European directive 2012/19/EU in order to be recycled or dismantled to minimize its impact on the environment. User has the choice to give his product to a competent recycling organization or to the retailer when he buys a new electrical or electronic equipment.
---	--

Technical Support Shenzhen Tenda Technology Co., Ltd. Floor 6-8, Tower E3, No.1001, Zhongshanyuan Road, Nanshan District, Shenzhen, China. 518052 Website: www.tendacn.com E-mail: tendasecurity@tenda.cn support.us@tenda.cn (North America) support.uk@tenda.cn (United Kingdom)	Copyright © 2025 Shenzhen Tenda Technology Co., Ltd. All rights reserved. Tenda is a registered trademark legally held by Shenzhen Tenda Technology Co., Ltd. Other brand and product names mentioned herein are trademarks or registered trademarks of their respective holders. Specifications are subject to change without notice.
---	---