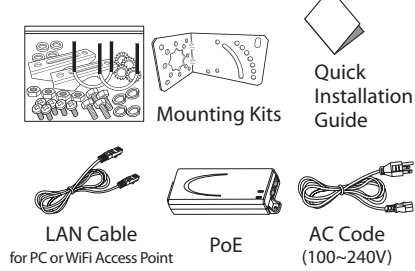


## Quick Installation Guide

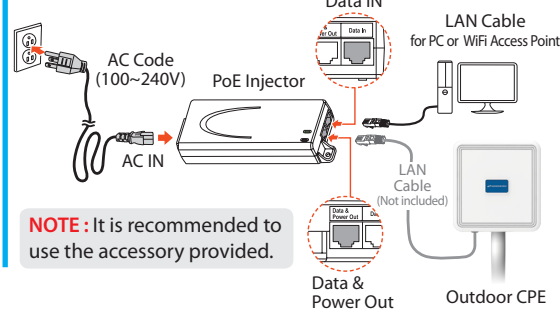
### LTE Network Outdoor CPE

SLC-120S410GA

#### Package Contents



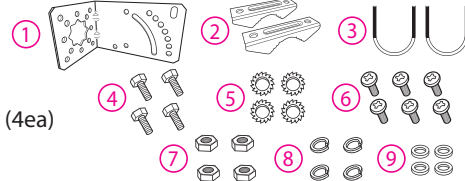
#### Connection Diagram



#### Mounting Configuration

You need the following :

- ① One Bracket
- ② Mounting Bar (2ea)
- ③ Mounting U-Bolt (2ea)
- ④ Bolt (4ea)
- ⑤ Toothed lock washer (4ea)
- ⑥ Bolt M3 (6ea)
- ⑦ Nut (4ea)
- ⑧ Spring Washer (4ea)
- ⑨ Washer (4ea)

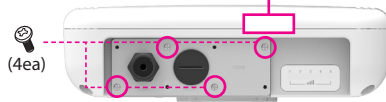


#### Assembly sequence optimization

##### Step 1

Remove the four Bolts M3 from the outdoor CPE.

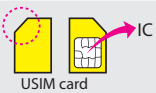
\* Remaining 4 screws are enclosed in the mounting kits as ⑥ (4ea)



##### Step 2 (Installing USIM Card)

Carefully insert the USIM Card into USIM slot.

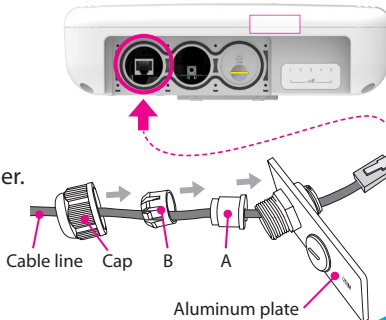
**CAUTION:** The surface of IC (metal) should be facing downward from the USIM card.



##### Step 3

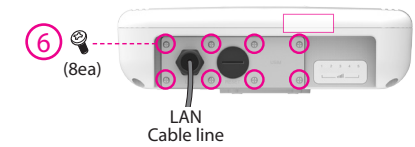
Remove the cap by turning. Then follow the next steps as shown below.

- ① Remove the cap.
- ② Put A, B, Cap and Aluminum plate to cable line in order.
- ③ Plug the cable line into the LAN hole of outdoor CPE.
- ④ Connect A and B in order.
- ⑤ Lastly, connect Cap to Aluminum plate by turning.



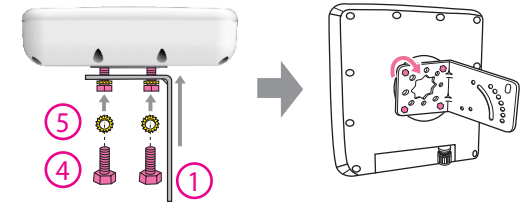
##### Step 4

Assemble the Aluminum plate and outdoor CPE using the screws Bolt M3(8ea).



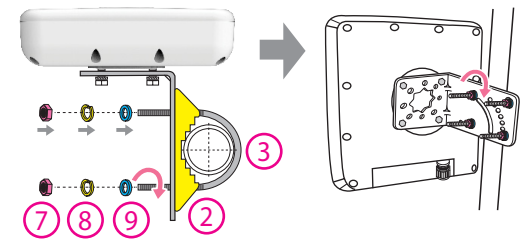
##### Step 5

Attach item 1 to the back side of the device using item 4 as shown. (Insert item 5 into item 4 before installing)



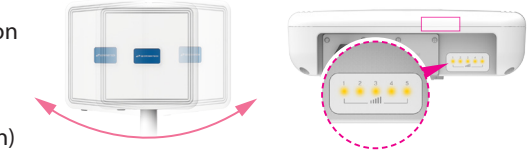
##### Step 6

Install the device to pole using item 2 & 3, tighten the bracket by using item 7 & 8 & 9.



##### Step 7

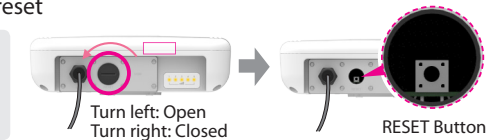
Adjust the device, using the different position on the bracket. Check the LED light (1~5).



#### RESET Button (When the device turned On)

- Press the reset button once : Device reboot
- Press and hold the reset button 5sec : Factory reset

**NOTE:** If you forget the Login password for the Outdoor CPE or IP address after making changes, use the reset button to restore the Outdoor CPE to its original factory default settings.

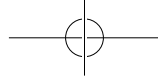


#### LED Presentation

Status icon & LED indicator	
Boot in progress	Blinking Yellow LED (1), Blinking period = 1sec
Network connection	Number of LED depending on signal strength - Most Strong Signal : Five yellow LED - Strong Signal : Four yellow LED - Middle Signal : Three yellow LED - Weak Signal : Two yellow LED - Very Weak Signal : One yellow LED

#### Log-in to Web Interface

- Go to WEB "<http://192.168.1.1>" then press ENTER to access the login screen.
- ID : **admin**      PASSWORD : **1dzmw'xCG\$Tqn**



## Legal Information

### FCC Part 15.105

This equipment has been tested and found to comply with the limits for a Class A digital device, pursuant to part 15 of the FCC Rules. These limits are designed to provide reasonable protection against harmful interference when the equipment is operated in a commercial environment.

This equipment generates, uses, and can radiate radio frequency energy and, if not installed and used in accordance with the instruction manual, may cause harmful interference to radio communications. Operation of this equipment in a residential area is likely to cause harmful interference in which case the user will be required to correct the interference at his own expense.

### FCC Part 15.19

This device complies with part 15 of the FCC Rules. Operation is subject to the following two conditions:

(1) This device may not cause harmful interference, and (2) this device must accept any interference received, including interference that may cause undesired operation.

### FCC Part 15.21

Changes or modifications not expressly approved by the manufacturer (or party responsible) for compliance could void the user's authority to operate the equipment.

### **FCC Radiation Exposure Statement:**

The output power from the device is below the threshold for requiring RF exposure evaluation and may be used in mobile conditions more than 20cm from the body.



FCC ID: V7MSLC-120S410GA

## Warranty Information

This product is the result of high-class craftsmanship based on strict quality control procedures.

- In case of Product failure or malfunction during normal usage, your product will be repaired free of charge within the Limited Warranty period.
- The Consumer shall bear any labor or parts charges not covered by this Limited Warranty.
- At the request for repair, you must provide the proof of purchase and the warranty.
- Keep the warranty in a safe location because it is not reissued.

Purchase date		
Quality warranty period	1 (one) year	
Seller		
Telephone number		
Consumer	Name	
	Address	
	Telephone number	
	E-mail	

The Consumer shall have no coverage or benefits under this Limited Warranty if the Product has been:

- Subjected to inappropriate use, improper storage, unauthorized repair, unauthorized modifications, neglect abuse, inadequate installation, misuse, damage caused by shipping, etc.
- Damaged from fire, flooding, windstorm, lighting, earthquake, theft, blown fuse, internet viruses, worms, Trojan Horses, etc.
- Treated with its Product Serial # removed or defaced.