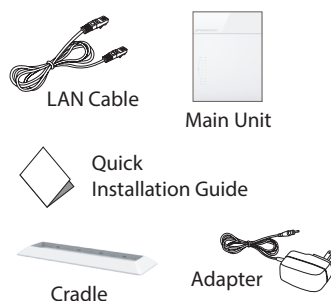


Quick Installation Guide

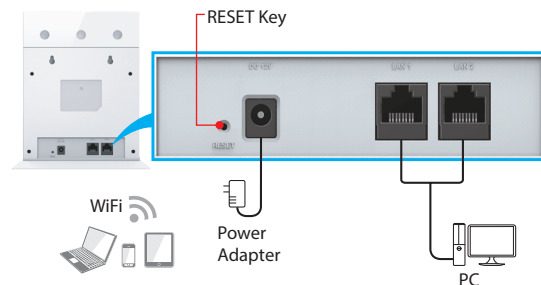
SLC-150T42GA

● Package Contents



NOTE: It is recommended to use the Adapter provided.

● Connection Method

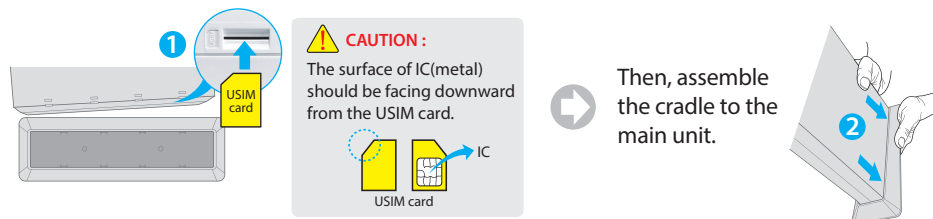


RESET Key (When the device turned On)
Insert a paperclip in the hole, wait for 5 seconds, and release to reset the device to default settings.

NOTE: If you forget the Log-in password for the device or IP address after making changes, use the reset button to restore the device to its original factory default settings.

● Install USIM card

Carefully insert the USIM card into USIM slot at the bottom of main unit.



● LED Presentation

| POWER | LED Indicator | LED Color | Function |
|-------|---------------|-----------|---|
| LTE | POWER | Red | Working : Red ON |
| 5 | LTE | Green | LTE Connected : Green ON |
| 4 | | Green | LTE Disconnected : Green Blinking |
| 3 | 5~1 | Yellow | LTE RSSI (Received Signal Strength Indication) Status : Yellow ON |
| 2 | LAN1/2 | Green | When connected to PC : Green ON |
| 1 | | Green | During LAN communication : Green Blinking |
| LAN 1 | WIFI 2.4G/5G | Green | WiFi On : Green ON |
| LAN 2 | | Green | Data Transfer : Green Blinking |
| 2.4G | USIM | Green | Inserted : Green ON |
| 5G | | White | Not Inserted : LED OFF |
| USIM | | | |

● Log-in to Web Interface

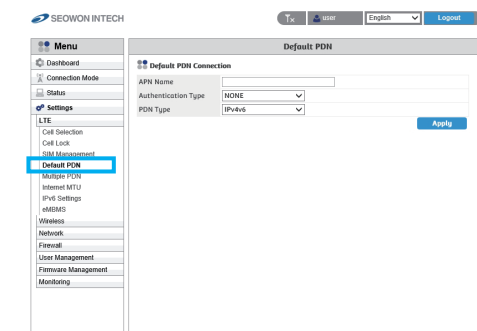
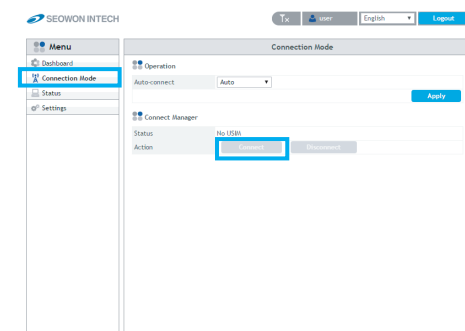
Go to WEB "<http://192.168.1.1>" then press ENTER to access the login screen.
The default one is **user** for both User Name and Password.



● If your device doesn't connect to network, follow below steps.

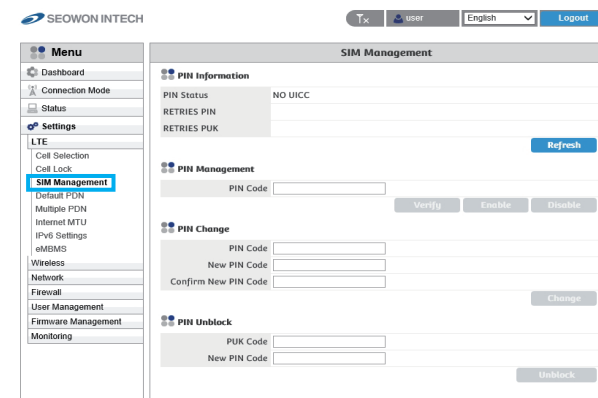
- 1) Check "Connection Mode" from the left menu.
- 2) Check "APN" value in "Settings">"LTE">"Default PDN" from the left menu.

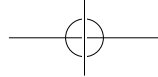
NOTE: Try to connect to network by clicking "Connect" button in "Connection Mode" from the left menu.



3) Check "USIM" status in "Settings">"LTE">"SIM Management" from the left menu.

NOTE: If your USIM card is locked, select "Unlock USIM" in action, type PIN code and click "Apply" button.
Status will be changed to "PIN enabled, Verified"





Legal Information

FCC Part 15.105

This equipment has been tested and found to comply with the limits for a Class A digital device, pursuant to part 15 of the FCC Rules. These limits are designed to provide reasonable protection against harmful interference when the equipment is operated in a commercial environment.

This equipment generates, uses, and can radiate radio frequency energy and, if not installed and used in accordance with the instruction manual, may cause harmful interference to radio communications. Operation of this equipment in a residential area is likely to cause harmful interference in which case the user will be required to correct the interference at his own expense.

FCC Part 15.19

This device complies with part 15 of the FCC Rules. Operation is subject to the following two conditions:

(1) This device may not cause harmful interference, and (2) this device must accept any interference received, including interference that may cause undesired operation.

FCC Part 15.21

Changes or modifications not expressly approved by the manufacturer (or party responsible) for compliance could void the user's authority to operate the equipment.

FCC Radiation Exposure Statement:

The output power from the device is below the threshold for requiring RF exposure evaluation and may be used in mobile conditions more than 20cm from the body.



FCC ID: 2ABFZ-CBRS-IDU

Warranty Information

This product is the result of high-class craftsmanship based on strict quality control procedures.

- In case of Product failure or malfunction during normal usage, your product will be repaired free of charge within the Limited Warranty period.
- The Consumer shall bear any labor or parts charges not covered by this Limited Warranty.
- At the request for repair, you must provide the proof of purchase and the warranty.
- Keep the warranty in a safe location because it is not reissued.

| | | |
|-------------------------|------------------|--|
| Purchase date | | |
| Quality warranty period | 1 (one) year | |
| Seller | | |
| Telephone number | | |
| Consumer | Name | |
| | Address | |
| | Telephone number | |
| | E-mail | |

The Consumer shall have no coverage or benefits under this Limited Warranty if the Product has been:

- Subjected to inappropriate use, improper storage, unauthorized repair, unauthorized modifications, neglect abuse, inadequate installation, misuse, damage caused by shipping, etc.
- Damaged from fire, flooding, windstorm, lighting, earthquake, theft, blown fuse, internet viruses, worms, Trojan Horses, etc.
- Treated with its Product Serial # removed or defaced.