

Product Safety Engineering, Inc

12955 Bellamy Brothers Blvd.

Dade City, FL 33525

352-588-2209



Testing Certification # 1367-01

TEST REPORT

06F219

04/16/2008

Applicant:

Commercial Wireless Systems International LLC

10798 NW 53rd Street

Sunrise, FL 33351

Product:

Model - 300/301

Wireless Smoke Detector

In Accordance with FCC Part 15.247

Test dates:

09/07/2006 - 02/20/2007

Receive Date:

08/30/2006

Prepared by: Steven E. Hoke - EMC Site Manager

A handwritten signature in black ink, appearing to read 'Steven E. Hoke', written in a cursive style.

This report may only be reproduced in full without written permission from Product Safety Engineering, Inc.

Table of Contents

Table of contents	Page 2
Test procedures	Page 3-4
Test Summary	Page 5
Peak Output Power Test Data	Page 6
Powerline Conducted Emissions	Page 7
20 dB Bandwidth	Page 8
Channel Separation	Page 9
Number of Hopping Frequencies	Page 10
Dwell Time	Page 11
Spurious Emissions & Restricted Band Compliance	Page 12
RF Exposure	Page 13
Antenna Specifications	Page 14
Exhibit 1 - Powerline Conducted Emissions	Page 15 - 18
Exhibit 2 - Bandwidth Plots	Page 19
Exhibit 3 - Channel Separation	Page 20
Exhibit 4 - Number of Hopping Frequencies	Page 21
Exhibit 5 - Dwell Time	Page 22 - 23
Exhibit 6 - Output Power & Spurious Emissions	Page 24
Exhibit 7 - Antenna Information	Page 25 - 26

Test Procedures

Product description: The system utilizes FHSS type transmitters. The CWSI smoke detector is comprised of models 300 and 301. The model 301 can have its internal sounder enabled remotely. It is a simple transceiver responsible for monitoring the presence of smoke. The smoke detector is part of a larger system that includes a central processing device and various other devices including a pull station, heat detector, fire transmitter and repeater.

Powerline conducted interference: The AC powerline conducted emissions measurements were not applicable due to battery operation.

20 dB Bandwidth: The EUT had its hopping function disabled while modulated. The spectrum analyzer span was set to (2-3) times the (20) dB bandwidth. The spectrum analyzer was placed in peak hold mode and the upper and lower points of the waveform were measured at a level that was (20) dB down from the peak amplitude. This was repeated for a low, mid and high frequency channel.

Channel Separation: The EUT had its hopping function enabled. The span on the spectrum analyzer was set wide enough to capture at least (2) adjacent channels. The channel separation was determined by measuring the peak frequency of (2) adjacent channels.

Description of frequency hopping system: The system utilizes 25 channels from 904.296 MHz to 926.250 MHz in the ISM band. The RF Unit hops through each of these channels at a rate of 375ms per channel, for a total hopping loop of 9.375 seconds. The system initiates data transmissions completely asynchronously from the hopping system which creates a random distribution of data for each channel. All messages are also acknowledged, which provides significant bandwidth throttling (i.e. messages can not be sent continuously) which limits duty cycle per transmitter about 50%. Due to system limitations such as a maximum payload size of 32bytes, 5khz bit rate, and a fixed 7 bytes packet overhead, the longest time a RF transmitter can be active is 78ms. All channels are used all of the time. There are not any facilities to detect jammed or undesirable channels and remove them from the hopping system.

Receiver bandwidth: The system receivers shall have input bandwidths that match the hopping channel bandwidths of their corresponding transmitters and shall shift frequencies in synchronization with the transmitted signals.

Number of hopping frequencies: With the spectrum analyzer in peak hold, we stored an image of all the channels operating and then produced a plot of the analyzer. We manually counted each channel to determine the number.

Dwell time: The EUT had its hopping function enabled. The average time of occupancy was first determined by measuring the width of a single channel with the spectrum analyzer in a zero span mode and then with the analyzer in a peak hold mode, a (10) second sweep was then performed to determine how many single channels occupied a (10) second period of time.

RF Exposure Compliance Requirements: Systems operating under the provisions of this section shall be operated in a manner that ensures that the public is not exposed to radio frequency energy levels in excess of the Commission's guidelines. Computations included in test report.

Peak output power: The EUT has an integrated antenna that prohibited direct connection to the measuring equipment. We performed radiated field strength measurements as an alternative test procedure as defined in FCC DA 00-705.

Conducted output power: Not applicable for integrated antenna.

Operation with directional antenna gains greater than 6 dBi: Not applicable for integrated antenna.

Spurious emissions: All spurious emissions were measured up to the tenth harmonic per ANSI C63.4:2003.

Restricted Band Compliance: All emissions were measured per ANSI C63.4:2003 and compared to the restricted band list.

Other conditions of operation per 15.247

15.247 (a) (1) - The system shall hop to channel frequencies that are selected at the system hopping rate from a pseudo randomly ordered list of hopping frequencies. Each frequency must be used equally on the average by each transmitter.

Each transmitter hops over a pseudo-random list of 36 distinct hopping frequencies. Transmitters will remain in a frequency for 398 ms (hop period). Transmitters will hop into each frequency in the list (and remain at that frequency for the hop period) until each frequency has been "hopped into" once (hop cycle). Transmitters will start a new hop cycle once the previous one completes.

15.247 (g) - Frequency hopping spread spectrum systems are not required to employ all available hopping channels during each transmission. However, the system, consisting of both the transmitter and the receiver, must be designed to comply with all of the regulations in this section should the transmitter be presented with a continuous data (or information) stream. In addition, a system employing short transmission bursts must comply with the definition of a frequency hopping system and must distribute its transmissions over the minimum number of hopping channels specified in this section.

The system does not make use of continuous data streams. All communication is achieved via short messages (less than 40 milliseconds) sent during a transmit opportunity within a hop. Messages can be transmitted or received on any hopping channel/frequency. Messages are not transmitted more than once within the same hop.

15.247 (h) - The incorporation of intelligence within a frequency hopping spread spectrum system that permits the system to recognize other users within the spectrum band so that it individually and independently chooses and adapts its hopsets to avoid hopping on occupied channels is permitted. The coordination of frequency hopping systems in any other manner for the express purpose of avoiding the simultaneous occupancy of individual hopping frequencies by multiple transmitters is not permitted.

The system does not implement any intelligence that permits it to recognize other users within the spectrum band so that it individually and independently chooses and adapts its hopsets to avoid hopping on occupied channels. The system does not coordinate in any other manner for the express purpose of avoiding the simultaneous occupancy of individual hopping frequencies by multiple transmitters.

Test Summary

Name of Test	Paragraph No.	Specification	Measurement	Result
Powerline Conducted Emissions	15.207(a)	Table 15.207(a)	Not applicable	Complies
Channel Separation	15.247(a)(1)	Greater of 25 kHz or 20 dB bandwidth	948 kHz	Complies
Pseudo-random Hopping Algorithm	15.247(a)(1)	See Page 4	Not applicable	Complies
Hopping Frequencies	15.247(a)(1)(i)	at least 25	25	Complies
Dwell Time	15.247(a)(1)(ii)	<0.4 sec in 10 sec	0.096 sec in 10 sec	Complies
20 dB Occupied Bandwidth	15.247(a)(1)	>250 kHz <500 kHz	265-286 kHz	Complies
Peak Output Power	15.247(b)	0.25 Watts	0.0037 Watts	Complies
Spurious Emissions (Conducted / Radiated)	15.247(d)	-20 dBc (peak) -30 dBc (avg)	-39.1 dBc	Complies
Spurious Emissions (Radiated)	15.247(d)	54.0 dBuV/m per Table 15.209(a)	38.9 dBuV/m	Complies

Test: Output Power per 15.247(b)(2)

Date: 02/20/2007

Requirement: The maximum peak conducted output power of the intentional radiator shall not exceed 1 watt for systems employing at least 50 hopping channels; and, 0.25 watts for systems employing less than 50 hopping channels, but at least 25 hopping channels

Result: Peak Output Power = (3.7) mW
See exhibit # 6.

RBW: (1) MHz

VBW: (3) MHz

$P = (ED^2 / 30G)$

Measuring Antenna Correction Factor = 24.4 dB

Cable loss = 2.5 dB

Preamp Gain = 23.3

Channel	Level Received dBuV	ACF, Cable loss & Preamp Gain	Corrected Level dBuV/m	Level V/m	Distance	Antenna Gain (N)	Watts mW
low	97.3	3.6	100.9	0.111	3 m	1	3.7
Mid	97.1	3.6	100.7	0.108	3 m	1	3.5
high	95.4	3.6	99.0	0.891	3 m	1	2.4

Test Equipment:

Manufacturer	Model	Description	Serial Number	Cal Due
Hewlett Packard	8566B	Spectrum Analyzer	2421A00526	07/18/07
Hewlett Packard	8447D	Preamp 0.1 - 1,000 MHz	2944A06832	12/04/07
Hewlett Packard	8449B	Preamp 1 - 26.5 GHz	3008A00320	05/11/07
EMC Automation	HLP3003C	Hybrid Log Periodic	017501	05/02/07
Electro-Mechanics	3115	Double Ridge Guide Ant	3810	11/28/07

Test: Powerline conducted interference per 15.207

Date: 02/20/2007

Requirement: An intentional radiator that is designed to be connected to the public utility (AC) power line, the radio frequency voltage that is conducted back onto the AC power line on any frequency or frequencies, within the band 150 kHz to 30 MHz, shall not exceed the limits in the following table:

Freq (MHz)	Quasi-peak dBuV	Average dBuV
0.15-0.5	66 to 56*	56 to 46*
0.5-5	56	46
5-30	60	50

*Decreases with the logarithm of the frequency.

Result: The EUT is battery powered and therefore exempt from this test.

RBW: (9) kHz

VBW: (10) kHz

See exhibit 1

Test: 20 dB Bandwidth

Date:02/20/2007

Requirement: The 20 dB bandwidth is required for other technical requirements.

Result: The 20 dB bandwidth was measured at the low, mid and high frequency of operation. The bandwidths are listed below:

Frequency (MHz)	Channel	Measured 20dB bandwidth
904.3	Low	277 kHz
915.3	Mid	286 kHz
926.3	High	265 kHz

See exhibit 2

Span:2 MHz

RBW: (10) kHz

VBW: (1) MHz

Channel: Low, mid and high

Test Equipment:

Manufacturer	Model	Description	Serial Number	Cal Due
Hewlett Packard	8566B	Spectrum Analyzer	2421A00526	07/18/07
Hewlett Packard	8447D	Preamplifier 0.1 - 1,000 MHz	2944A06832	12/04/07
Hewlett Packard	8449B	Preamplifier 1 - 26.5 GHz	3008A00320	05/11/07
EMC Automation	HLP3003C	Hybrid Log Periodic	017501	05/02/07
Electro-Mechanics	3115	Double Ridge Guide Ant	3810	11/28/07

Test: Carrier Frequency Separation per 15.247(a)(1)

Date: 02/20/2007

Requirement: Frequency hopping systems shall have hopping channel carrier frequencies separated by a minimum of 25 kHz or the 20 dB bandwidth of the hopping channel, whichever is greater.

Result: The 20 dB bandwidth was measured at the mid frequency of operation. The separation was found to be (928) kHz..

See Exhibit 3

RBW: (100) kHz

VBW: (1) MHz

Test Equipment:

Manufacturer	Model	Description	Serial Number	Cal Due
Hewlett Packard	8566B	Spectrum Analyzer	2421A00526	07/18/07
Hewlett Packard	8447D	Preamp 0.1 - 1,000 MHz	2944A06832	12/04/07
Hewlett Packard	8449B	Preamp 1 - 26.5 GHz	3008A00320	05/11/07
EMC Automation	HLP3003C	Hybrid Log Periodic	017501	05/02/07
Electro-Mechanics	3115	Double Ridge Guide Ant	3810	11/28/07

Test: Number of hopping frequencies per 15.247(a)(1)(i)

Date: 02/20/2007

Requirement: If the 20 dB bandwidth of the hopping channel is 250 kHz or greater, the system shall use at least 25 hopping frequencies

Result: The 20 dB bandwidth was measured for low, middle and high frequency operation and the bandwidth was found to be between (265 - 286) kHz. We observed 25 hopping frequencies.

See exhibit 4.

RBW: (300) kHz

VBW: (1) MHz

Test Equipment:

Manufacturer	Model	Description	Serial Number	Cal Due
Hewlett Packard	8566B	Spectrum Analyzer	2421A00526	07/18/07
Hewlett Packard	8447D	Preamp 0.1 - 1,000 MHz	2944A06832	12/04/07
Hewlett Packard	8449B	Preamp 1 - 26.5 GHz	3008A00320	05/11/07
EMC Automation	HLP3003C	Hybrid Log Periodic	017501	05/02/07
Electro-Mechanics	3115	Double Ridge Guide Ant	3810	11/28/07

Test: Dwell time per 15.247(a)(1)(i)

Date:02/20/2007

Requirement: The average time of occupancy on any frequency shall not be greater than 0.4 seconds within a 10 second period when the 20 dB bandwidth of the hopping channel is greater than 250 kHz.

Result: The analyzer was placed in a peak hold mode for greater than (10) seconds. The dwell time was measured and found to be (96) mSec which is less than the (400) mSec allowed..

Note: The 20 dB bandwidth was measured for low, middle and high frequency operation and the maximum bandwidth was found to be between (265 - 286) kHz

See exhibit 5.

Span: Zero

RBW: (300) kHz

VBW: (1) MHz

Test Equipment:

Manufacturer	Model	Description	Serial Number	Cal Due
Hewlett Packard	8566B	Spectrum Analyzer	2421A00526	07/18/07
Hewlett Packard	8447D	Preamp 0.1 - 1,000 MHz	2944A06832	12/04/07
Hewlett Packard	8449B	Preamp 1 - 26.5 GHz	3008A00320	05/11/07
EMC Automation	HLP3003C	Hybrid Log Periodic	017501	05/02/07
Electro-Mechanics	3115	Double Ridge Guide Ant	3810	11/28/07

Test: Spurious emissions per 15.247(d)

Date: 02/20/2007

Requirement: In any 100 kHz bandwidth outside the frequency band in which the spread spectrum or digitally modulated intentional radiator is operating, the radio frequency power that is produced by the intentional radiator shall be at least 20 dB below that in the 100 kHz bandwidth within the band that contains the highest level of the desired power, based on either an RF conducted or a radiated measurement.

Result: The spurious emissions were measured up to the tenth harmonic. The highest spurious emission was found to be (1.808) GHz at (61.6) dB under the limit.

See exhibit 6

RBW: (1) MHz

VBW: (3) MHz

Channel: Low, mid and high.

Additional Requirement: Emissions which fall in the restricted bands, as defined by in 15.205(a), must also comply with the radiated emissions limits specified in 15.209.

Result: Emissions found in restricted bands did not exceed the limit as shown on exhibit 7.

Test Equipment:

Manufacturer	Model	Description	Serial Number	Cal Due
Hewlett Packard	8566B	Spectrum Analyzer	2421A00526	07/18/07
Hewlett Packard	8447D	Preamp 0.1 - 1,000 MHz	2944A06832	12/04/07
Hewlett Packard	8449B	Preamp 1 - 26.5 GHz	3008A00320	05/11/07
EMC Automation	HLP3003C	Hybrid Log Periodic	017501	05/02/07
Electro-Mechanics	3115	Double Ridge Guide Ant	3810	11/28/07

RF Exposure - Power Density Compliance Calculation

15.247(I) - Systems operating under the provisions of this section shall be operated in a manner that ensures that the public is not exposed to radio frequency energy levels in excess of the Commission's guidelines.

Compliance is based upon section CFR 47 section 1.1310, Table (1) Limits for Maximum Permissible Exposure (MPE), (b) Limits for General Population/Uncontrolled Exposure. The stated limit is (1.0) mW/cm² and compliance was calculated using the following formula:

$$S = (P G) / (4 \pi r^2)$$

Where:

S = Power density in mW/cm²

P = Power in mW

G = Numerical antenna gain

r = Distance in cm

Maximum output power = (3.7) mW

Antenna gain (numeric) = 1.00 dB

Distance = 20 cm

$$S = (3.7 * 1.00) / (12.57 * 400)$$

$$S = (3.7) / (5,028)$$

$$S = (0.000735) \text{ mW} / \text{cm}^2$$

Limit = (1.0) mW / cm²

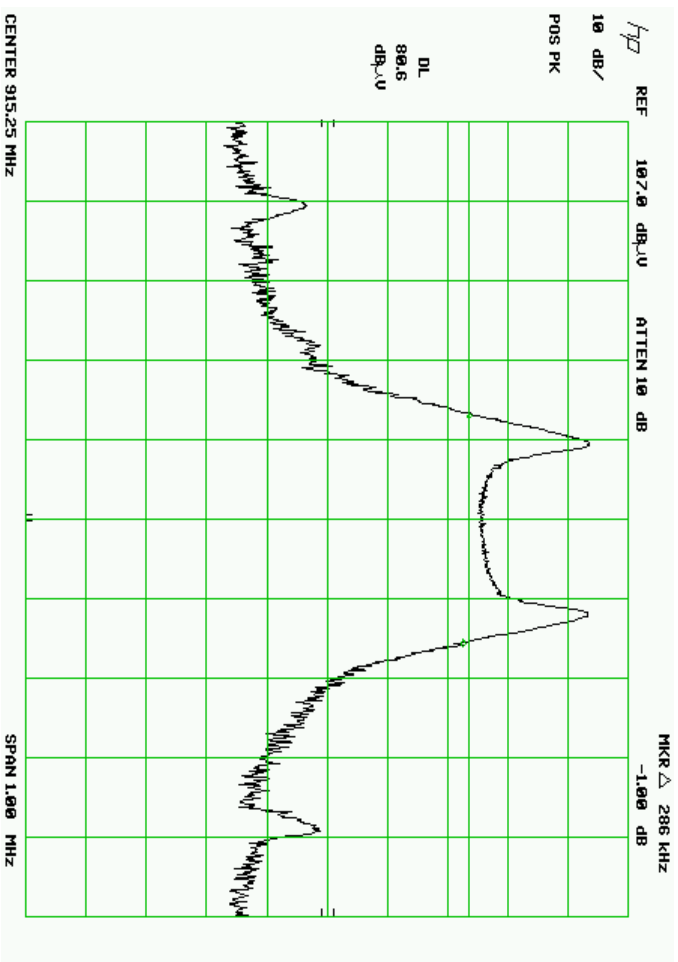
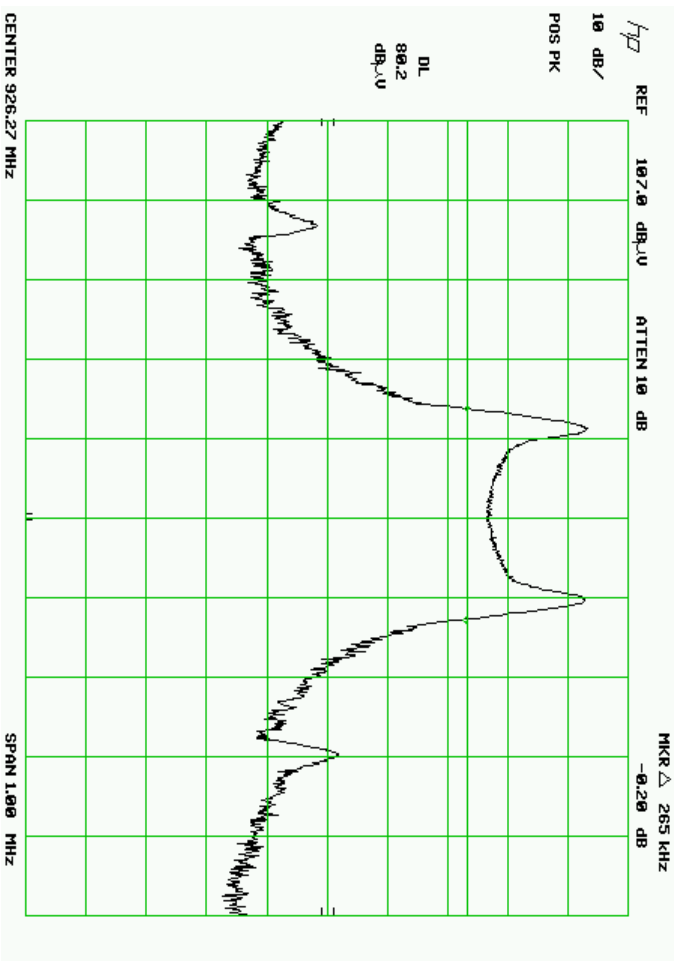
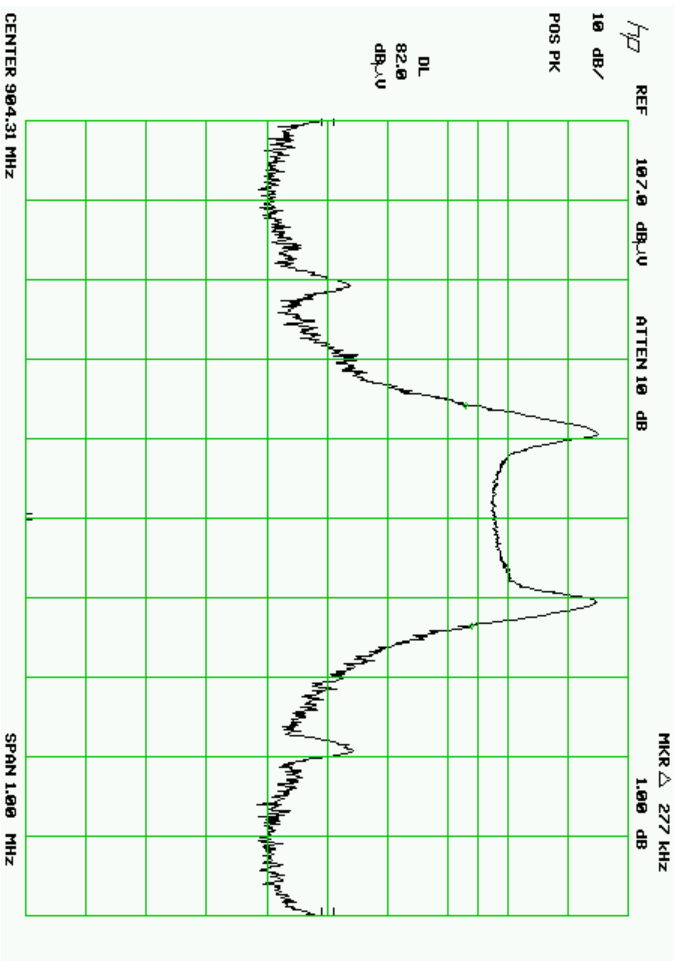
Antenna Specifications

This EUT incorporates an integrated antenna that is part of the PWB.

EXHIBIT 1

POWERLINE CONDUCTED EMISSIONS

Not Applicable



h70

REF

107.0 dBμV

ATTEN 10 dB

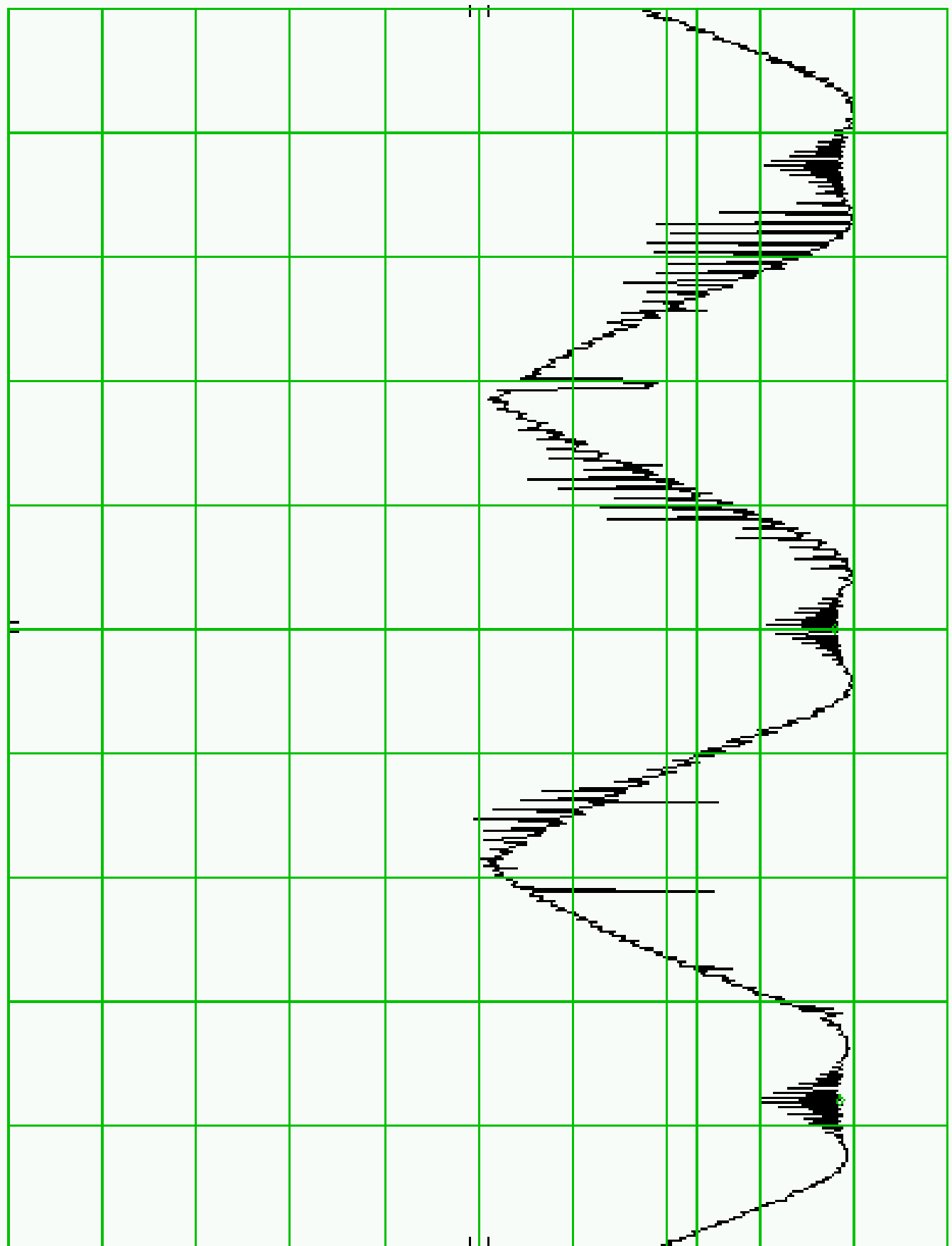
MKR Δ 948 kHz

0.60 dB

10 dB/

POS PK

DL
80.2
dBμV



CENTER 915.25 MHz

RES BW 100 kHz

UBW 100 kHz

SPAN 2.50 MHz

SMP 50.0 msec

h7D

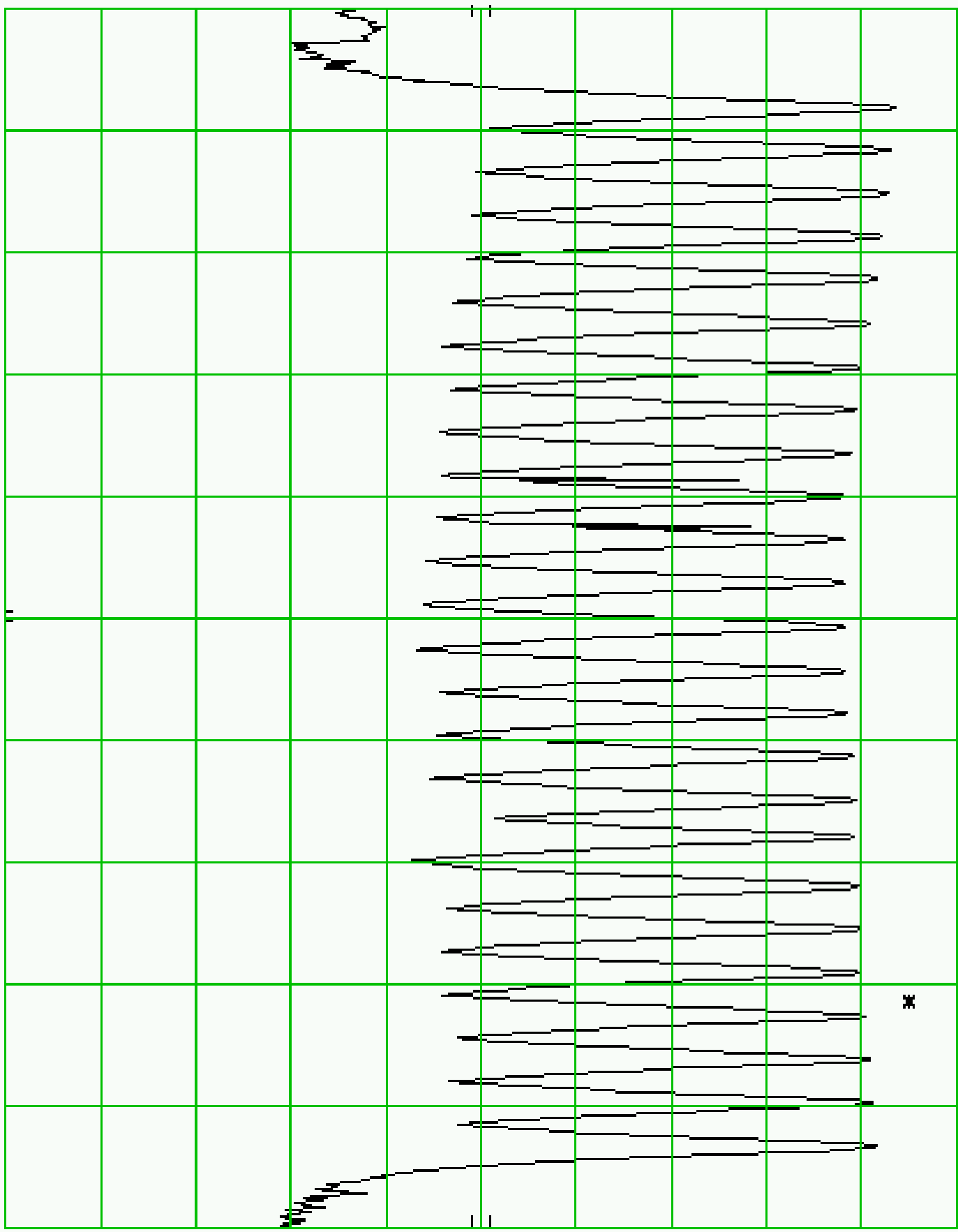
REF

107.0 dB_u

ATTEN 10 dB

10 dB

POS PK



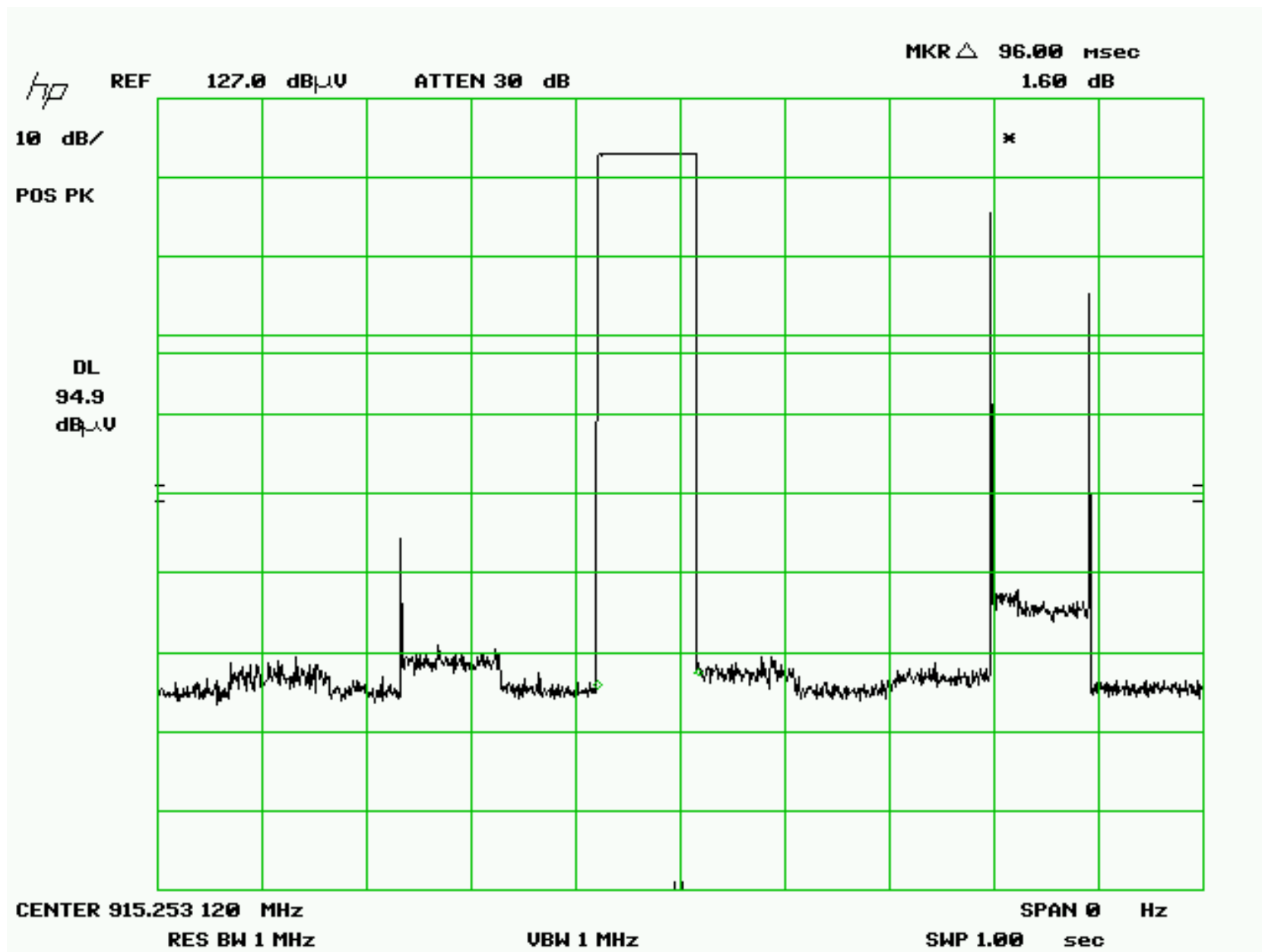
START 902.0 MHz

RES BW 100 KHz

VBW 300 KHz

STOP 928.0 MHz

SMP 23.1 msec



hp

REF

127.0 dBμV

ATTEN 30 dB

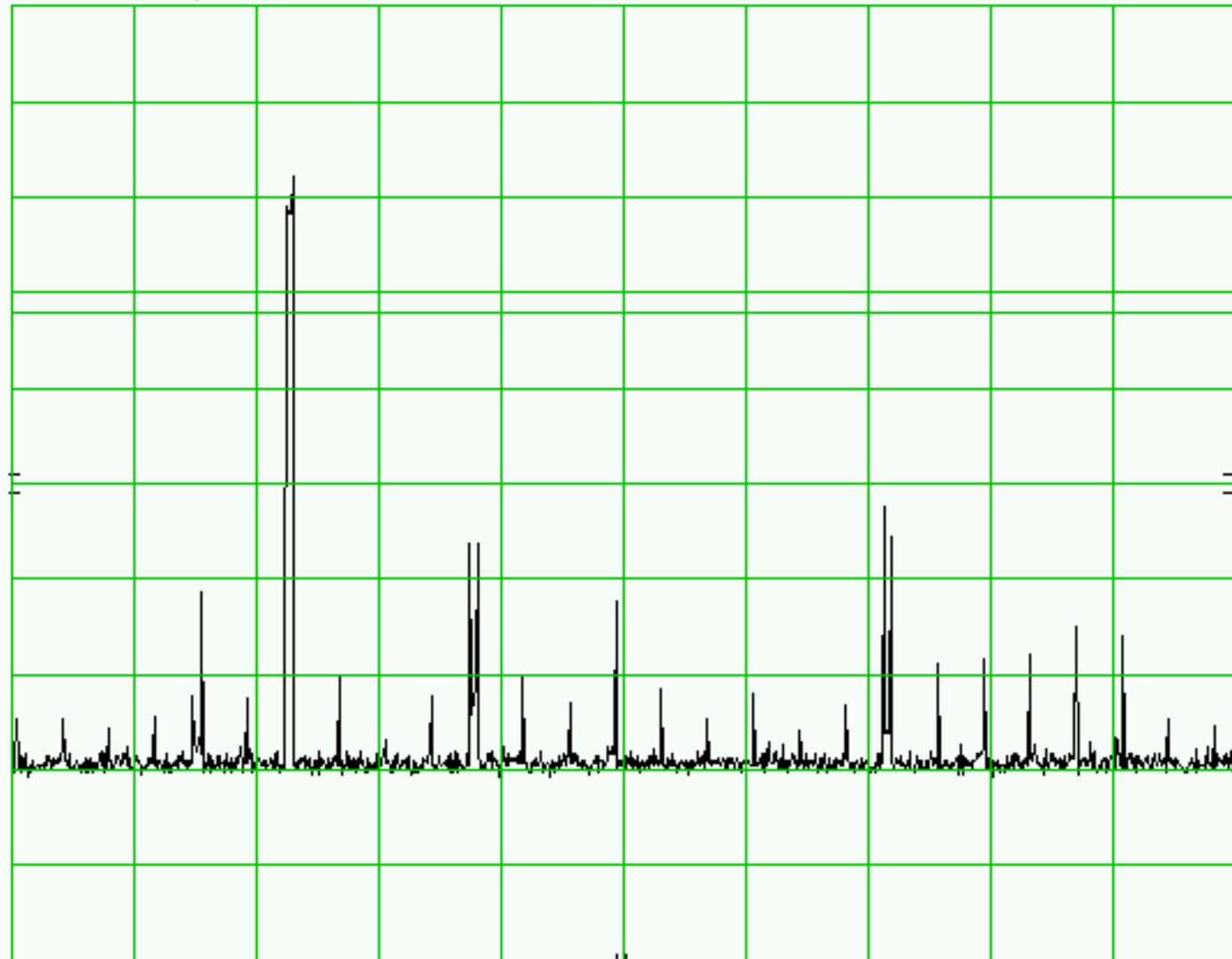
10 dB/

POS PK

DL

94.9

dBμV



CENTER 915.254 000 MHz

RES BW 100 kHz

VBW 100 kHz

SPAN 0 Hz

SWP 10.0 sec

Low Freq (MHz)	904.3	1808.6	2712.9	3617.2	4521.5	5425.8	6330.1	7234.4	8138.7	9043
Harmonic	1	2	3	4	5	6	7	8	9	10
Distance (meters)	3	3	3	3	3	3	3	3	3	3
V/m (CW)	1.11E-01	9.33E-04	7.75E-05	7.80E-05	7.10E-05	9.10E-05	8.60E-05	8.70E-05	8.50E-05	8.80E-05
dBuV/m	100.91	59.40	37.79	37.84	37.03	39.18	38.69	38.79	38.59	38.89
Restricted Band	N	N	Y	Y	Y	Y	N	Y	Y	Y
Restricted Band Margin			16.21	16.16	16.97	14.82		15.21	15.41	15.11
Numeric Gain	1	1	1	1	1	1	1	1	1	1
Power (Watts)	0.00370	2.6E-07	1.8E-09	1.8E-09	1.5E-09	2.5E-09	2.2E-09	2.3E-09	2.2E-09	2.3E-09
Power (dBm)	5.7	-35.8	-57.4	-57.4	-58.2	-56.0	-56.5	-56.4	-56.6	-56.3
dBc		-41.5	-63.1	-63.1	-63.9	-61.7	-62.2	-62.1	-62.3	-62.0
Mid Freq (MHz)	915.3	1830.6	2745.9	3661.2	4576.5	5491.8	6407.1	7322.4	8237.7	9153
Harmonic	1	2	3	4	5	6	7	8	9	10
Distance (meters)	3	3	3	3	3	3	3	3	3	3
V/m (CW)	1.08E-01	1.20E-03	7.85E-05	6.10E-05	7.60E-05	7.40E-05	8.60E-05	8.70E-05	8.90E-05	8.80E-05
dBuV/m	100.67	61.58	37.90	35.71	37.62	37.38	38.69	38.79	38.99	38.89
Restricted Band	N	N	Y	Y	Y	N	N	Y	Y	Y
Restricted Band Margin			16.10	18.29	16.38			15.21	15.01	15.11
Numeric Gain	1	1	1	1	1	1	1	1	1	1
Power (Watts)	0.0034992	4.32E-07	1.85E-09	1.12E-09	1.73E-09	1.64E-09	2.22E-09	2.27E-09	2.38E-09	2.32E-09
Power (dBm)	5.4396877	-33.64516	-57.33139	-59.52219	-57.61252	-57.84415	-56.53882	-56.4384	-56.24099	-56.33913
dBc		-39.1	-62.8	-65.0	-63.1	-63.3	-62.0	-61.9	-61.7	-61.8
High Freq. (MHz)	926.3	1852.6	2778.9	3705.2	4631.5	5557.8	6484.1	7410.4	8336.7	9263
Harmonic	1	2	3	4	5	6	7	8	9	10
Distance (meters)	3	3	3	3	3	3	3	3	3	3
V/m (CW)	8.91E-02	9.80E-04	6.95E-05	6.00E-05	8.70E-05	7.30E-05	8.50E-05	8.70E-05	8.80E-05	8.80E-05
dBuV/m	99.00	59.82	36.84	35.56	38.79	37.27	38.59	38.79	38.89	38.89
Restricted Band	N	N	Y	Y	Y	N	N	Y	Y	N
Restricted Band Margin			17.16	18.44	15.21			15.21	15.11	
Numeric Gain	1	1	1	1	1	1	1	1	1	1
Power (Watts)	0.0023816	2.88E-07	1.45E-09	1.08E-09	2.27E-09	1.6E-09	2.17E-09	2.27E-09	2.32E-09	2.32E-09
Power (dBm)	3.7687666	-35.40427	-58.38909	-59.66576	-56.4384	-57.96233	-56.64041	-56.4384	-56.33913	-56.33913
dBc		-39.2	-62.2	-63.4	-60.2	-61.7	-60.4	-60.2	-60.1	-60.1