

User Guide

WZB 35

TELECOMMANDE TACTILE PORTATIVE

© 2008 VITY Technology

VITY Technology IS NOT RESPONSIBLE FOR TECHNICAL OR EDITING ERRORS IN THE CONTENTS OF THIS GUIDE. VITY Technology IS NOT RESPONSIBLE FOR ANY SPECIAL, INDIRECT OR CONSEQUENTIAL DAMAGES OR ANY DAMAGES WHATSOEVER RESULTING FROM ARISING OUT OF OR IN CONNECTION WITH THE USE OR PERFORMANCE OF DOCUMENTS, OR LOSS OF USE.

The contents of this guide has NOT been filtered, may contain unconfirmed, unproved or indirect information regarding product warranty, product quality and advertisement, and are subject to change without notice if deemed necessary. VITY Technology product warranty is included in the product kit, and this user guide is NOT included with any extra product warranty.

THE CONTENTS AND INFORMATION INCLUDED IN THIS GUIDE ARE COPYRIGHT PROTECTED. THUS, THEY CANNOT BE COPIED, REPRODUCED, OR TRANSLATED WITHOUT VITY Technology's WRITTEN CONSENT.

User Guide

TELECOMMANDE TACTILE PORTATIVE

Model No. WZB 35

Website: www.vity.com

CONTENTS

5	6	13	15
Product Introduction	Product Kit	Getting Started	System Setup
	6 Product Kit Details	13 Power On	15 LCD & LED
	7 Body Structure	14 Battery Charging	17 Volume
	Chargeable Cradle		Date & Time
	8 RF Receiver		18 Macro Display
	9 Hard Buttons and		Calibrate
	Functions		19 Factory Default
	11 Touch Screen and		System Inform
	Functions		
20	24	31	41
Registration	Edit Home	Edit Remote Control	Macro
20 Basic Device	25 Add Device	32 Add Remote	41 How To Use Macro
Registration	Home Page	Control Page	Create Macro
	Delete Device	Delete Remote	43 Edit Macro Action
	Home Page	Control Page	
	26 Hide Device	33 Add Remote	
	Home Page	Control Button	
	Add Device Button	34 Copy Remote	
	28 Copy Device Button	Control Button	
	Delete Device Button	35 Delete Remote	
	29 Move Device Button	Control Button	
	30 Change Type & Text	Move Remote	
		Control Button	
		36 Change Type & Text	
		37 Set Remote	
		Control Button IR	
		39 Import Control Code	

45

Timer

45 How To Use Timer

46 Edit Timer

53

IR Learn

55

IR / RF

58

myDB Management

58 How to add
User Device to myDB

60 How to add
Device from myDB

62

Setup Protection Mode

63

Troubleshooting

66

General Information

68

System Specifications

WZB 35 Intelligent Digital Controller

WZB 35 is a revolutionary customizable intelligent digital controller introduced to the world market for the very first time. It outdoes previous models of total or individual remote controllers in performance, and provides excellent quality macro actions, remote control registration, timer option and various other services. **WZB 35** is also equipped with high quality touch screen which enables users to edit screen and set up various remote control scenarios at their convenience.

WZB 35 is capable of remote controlling high quality audio, video, lighting systems as well as various other appliances, and is also compatible with audio, video, lighting systems used in conference, home, auditoriums and lecture rooms in corporations, educational institutes, and public organizations.

WZB 35's featured characteristics are as follows;

- Customizing UI setup - able to customize UI (user interface) scenarios, the graphic image of buttons.
 - User mode and protect mode - able to protect the setup data if you set User mode.
 - Various control method - able to support the IR signal for audio, video devices and RS232/RS485 (only TX) for lighting devices, matrix, AV switchers etc. Also able to support the relay contact control for electric motorized screen, curtain and elevation.
 - Addressable channel and ID setup for multi-zone and same model's devices - provide to support 16 channel address for the multi-zone and 16 ID address for same model's devices.
 - 2.4GHz RF operation distance – able to control to about 100meter in open space.
 - myDB register and management – able to save and open the user setup device's control data to transfer from/to myDB.
 - Powerful IR learning function - able to learn wide frequency (no carrier and below 1MHz) IR signal and toggle property's button.
 - Dedicated macro function - able to execute multiple trigger actions using macro functions with delay (by 0.2 sec) and page jumper.
 - 16 Timer function - provides a convenient timer option to set active time for a selected macro.
 - Convenient touch screen and external hard buttons - provide a 3.5 inch touch screen with 65,000 colors to enhance your visual perception and 19 external hard button included with 13 remote control buttons.
 - IR code library – support to be Installed with a wide selection of codesets for domestic and foreign brands of IR devices, and provides a convenient codeset autoscan function to help you find codesets and register devices with ease.
 - Convenient touch keyboard - able to select and modify font size and colors of English, Arabic Numbers, ASCII Codes and symbols that are used for device, remote control, and macro buttons.
 - Online software upgrade - provides a frequent online software update service and convenient after-services and able to transfer data between **WZB 35** and a computer by using USB port.
-

6 Product Kit

Product Kit Details

WZB 35 product kit includes items as follows.



■ WZB 35



■ RF Receiver



■ Dual IR Emitter



■ Battery Charger



■ DC Adapter × 2



■ USB Cable



■ IR Link Cable



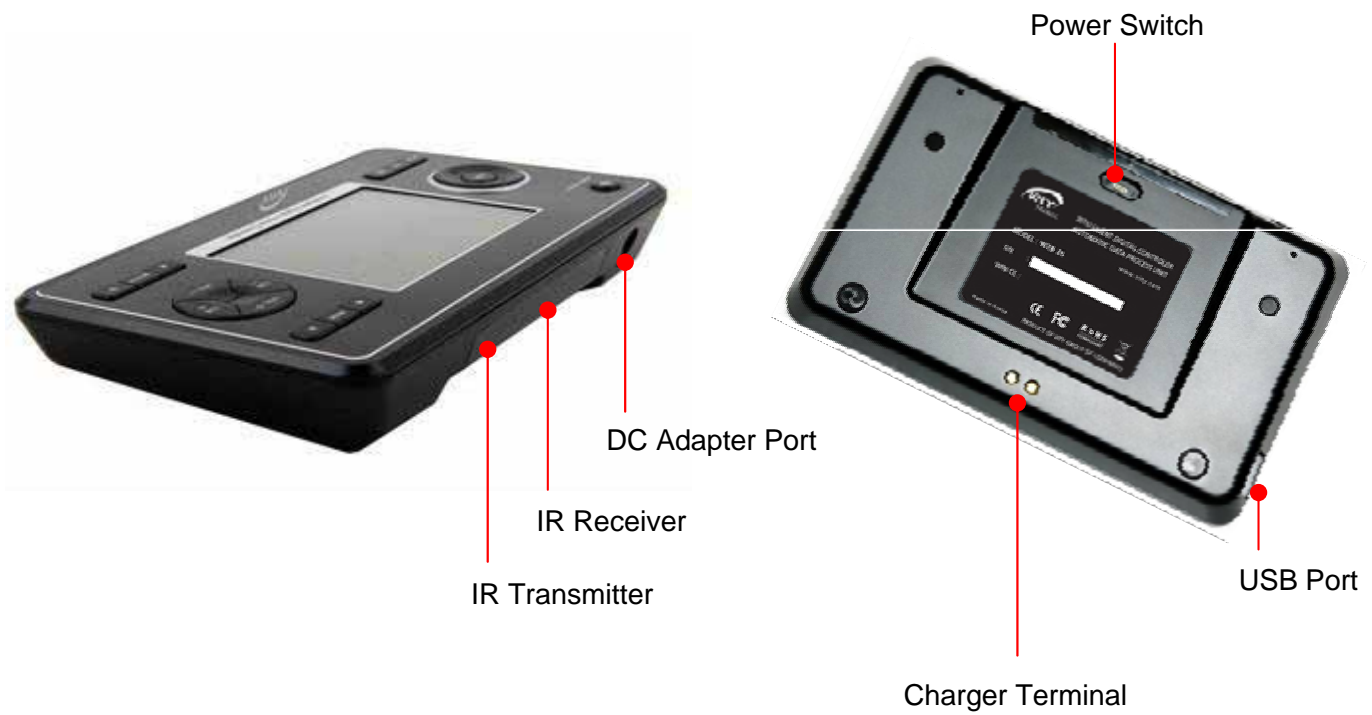
■ Stylus



■ CD

(Included with User Guide
& other software)

WZB 35 Body Structure



Chargeable Cradle

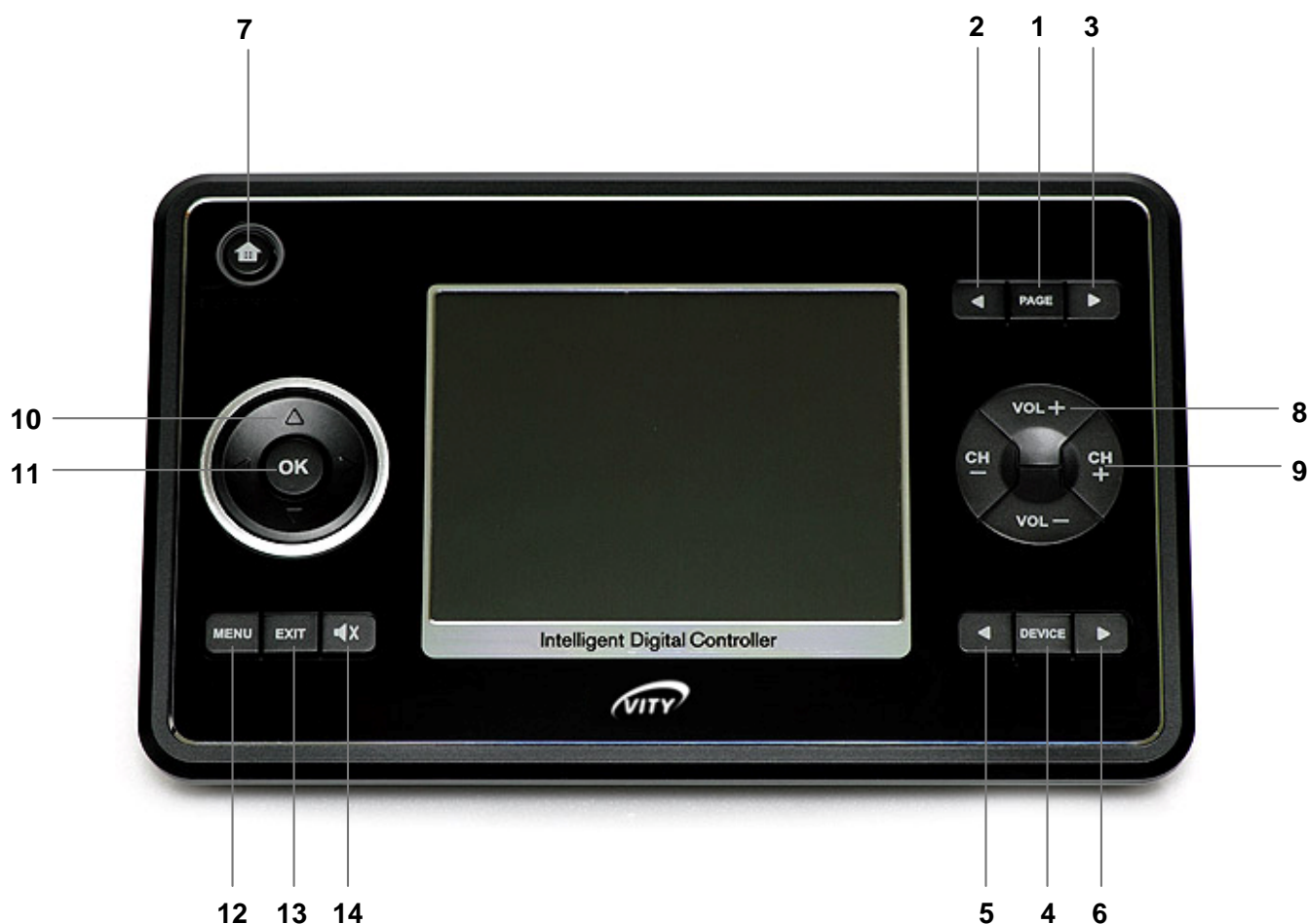


RF Receiver



Hard Buttons and Functions

Hard buttons located on the **WZB 35** body are classified into two different types depending on their functions. There are “Move Buttons” to move between modes and pages in **WZB 35**, and “Remote Control Buttons” to control devices in connection with the remote controller displayed on the touch screen.



Move Buttons

1 [Page] Button

When more than one device home pages, remote control or macro pages are saved, press this to go to the very 1st page of each page automatically.

2 [◀ Page] Button

Enables you to move between pages to backward. i.e.) Page 4 > Page 3 > Page2 ...

3 [Page ▶] Button

Enables you to move between pages to forward. i.e.) Page 1 > Page 2 > Page 3...

4 [Device] Button

Directs you to the 1st device's initial remote control page registered on Device Home regardless of the mode you are in (Device Home or other Remote Control Page).

5 [◀ Device] Button

Press this in "Device Home" to go to the Remote Control link page for the first device registered in the list. If pressed while in "Remote Control", you will be directed to the list of devices, ordered from the most recently registered to the first registered device.

6 [Device ▶] Button

Press this in "Device Home" to go to the Remote Control link page for the first device registered in the list. If pressed while in "Remote Control", you will be directed to the list of devices, ordered from the first to the most recently registered device.

Remote Control Buttons

7 [Home] Button



Enables you to attribute the remote control code and macro.

Note 1. Use this to go to 'user mode' and 'protect mode'
2. This button is equipped with an LED. It will be displayed in blue when in use, white while being charged, and green when the battery is fully charged.

8 [Volume +/-] Buttons

Enables you to adjust a selected device's sound volume using the [VOL +] and [VOL -] buttons.

9 [Channel +/-] Buttons

Enables you to change a selected device's channels using the [CH +] and [CH -] buttons.

10 [Cursor Control] buttons

Enables you to execute various finding functions such as device menu search function using the [▲], [▼], [◀] and [▶] buttons.

11 [OK] Button

Enables you to confirm commands such as menu opening function searched by a Cursor Control button.

12 [Menu] Button

Enables you to open menus such as device's menu list.

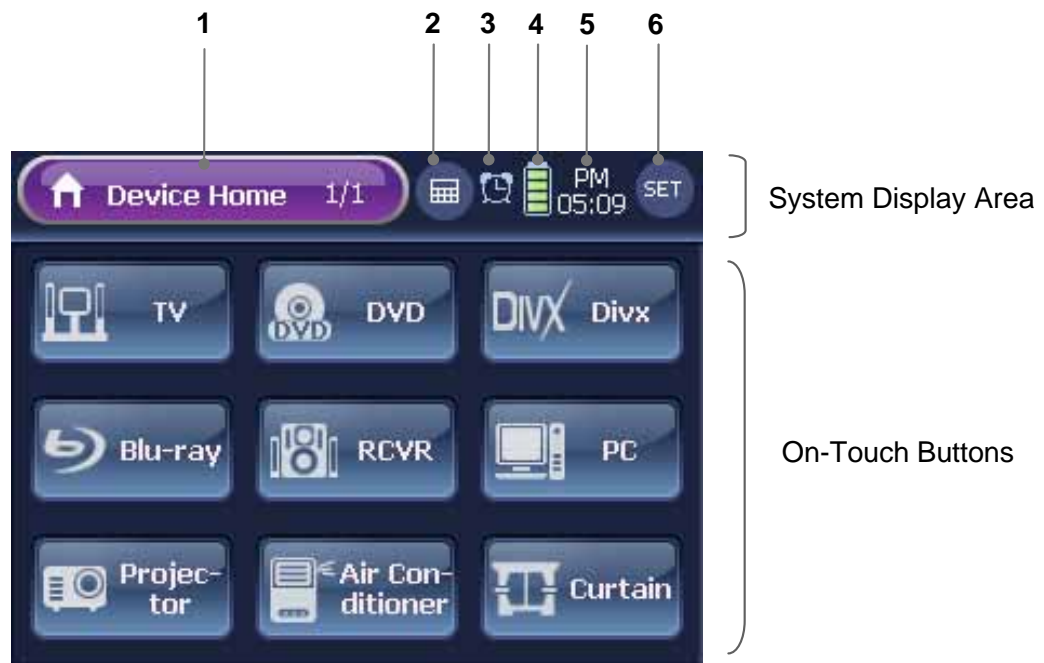
13 [Exit] Button

Enables you to close and exit menus such as device's menu list.

14 [Mute] Button

Enables you to mute sound.

Touch Screen and Functions



System Display Area

1 Current Directory Information Button

Displays the current directory and page on the touch screen.

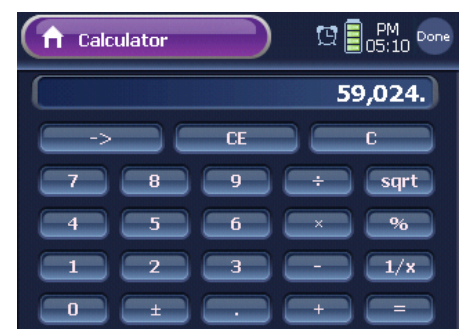
- Note** 1. "Directory Information" displays a mode ("Device Home"), a selected device type ("TV", "DVD"), and a setup mode ("Device Setup" or "Registration").
2. "Page Information" displays total numbers of the screen's page and the current page as "Current Page/Total Page Number".

Enables you to move between modes: "Device Home" and "Remote Control Page".

2 Calculator

This Calculator button is only displayed when in "Device Home" mode, and directs you to "Calculator" mode when selected.

- Note** 1. This button is not displayed when in "Remote Control" modes, and replaced with IR Indicator instead.
2. Calculator mode performs exactly same as the calculator function provided in PCs.
3. To finish using Calculator mode, press the **[Done]** button. You will be redirected to "Device Home".



Signal Indicator

When **WZB 35** is transmitting signals to a device through a remote control or macro button, signal indicator appears and informs the signal status.

[IR control mode]



Status to transmit IR signal from front body of **WZB 35**

[RF control mode]



Status to transmit IR signal from IR port of RF receiver



Status to transmit RS232 from RS-232 port of RF receiver

Note. In Remote Control modes, this Signal Indicator will be displayed on the location where the Calculator button is placed.



3 Timer Indicator

When a Timer is set, Timer Indicator will be displayed.

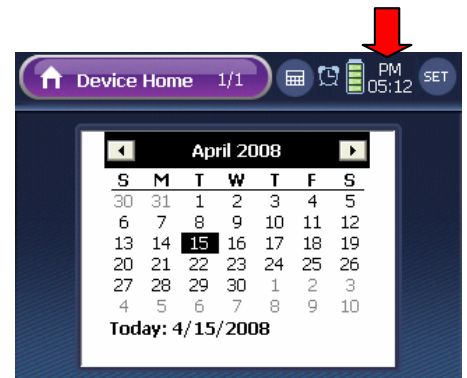
4 Battery Indicator

Informs remaining battery capacity with 5 different stages, and will start blinking when the battery needs to be charged.

5 Clock

Informs your current local time.

- Note**
1. You can adjust time with the "Date & Time" menu under the "System Setup" menu.
 2. Press the Clock to bring up Calendar as a pop up window. Calendar automatically disappears in 6 seconds from the time that it was open, but you can also manually close by pressing an edge of the window.



6 Function Buttons

Perform various functions in modes and pages. Press the **[SET]** button about 0.5sec shortly on any screen to go to "Device Setup" menu mode.

On-Touch Buttons

When in the "Device Home" mode, on-touch buttons become device buttons, and in the "Remote Control" mode, they become remote control buttons. In the "Setup" mode, they become menu and function buttons to perform the corresponding functions.

13 Getting Started

Power On

1 Turn on the power to start using WZB 35.

Move the power switch at the backside of **WZB 35** to the “I”.

Note 1. The power switch is located and caved in at the backside of **WZB 35**, please use stylus to turn on or off power. (Refer to the page 7, “Body Structure”).

2. “I” on the power switch means “Power On”, while “O” means “Power Off”.



2 When you turn on WZB 35 for the very first time, you will be directed to “Device Home”.

The “Device Home” screen will appear followed by a loading screen which will be displayed and stay for approximately 45 seconds as immediately as after the LCD screen is turned on. Since there is no available device registered in “Device Home”, you must register devices before starting to use the mode.



Note 1. When you open “Device Home” for the first time, you will be informed with the mode unavailability messages. This message will no longer appear once a device button is registered.

2. You cannot use exterior buttons at first. When you press an exterior button, you will be informed with the button's function through a message. However, this message will be no longer displayed once you register a device and use the exterior button for the device.

3. Press the **[SET]** button shortly at the upper right side of the “Device Home” screen. You will be directed to “Device Setup” menu.



Tip. Restarting from the Sleep Mode

The LCD screen will be automatically switched to the Sleep mode, and turned off at the time that was set up by the user. (Refer to the page 16, “LCD Timeout”).

If you wish to wakeup the Sleep mode and display the LCD screen;

1. Gently press the touch screen with a finger.
2. Press any hard button on the **WZB 35**'s body.
3. Gently lift **WZB 35** with your hand.
(**WZB 35** is equipped with a pick-up sensor.)

Battery Charging

Battery Capacity Check


“Battery Indicator” displayed within the System Display Area informs you with **WZB 35**’s remaining battery capacity. The remaining battery capacity will be shown in 5 different stages, and the indicator will start blinking when the battery needs to be charged.



How to Charge Battery

1 By Using the Battery Charger

Connect the DC adapter to the battery charger, and place **WZB 35** on the charger. It will immediately initiate battery charging.

- Note** 1. When **WZB 35** is connected to the charger’s charging terminal, the LED on the exterior  button will turn into “white”, which means the battery is being charged. When the battery is fully charged, the LED will become “green” color.
2. It takes approximately 4 hours to fully charge a completely discharged battery.

2 By Using DC Adapter

Connect DC adapter directly to **WZB 35**’s DC adapter port. It will automatically initiate battery charging. In this case, you can still use **WZB 35** even when the battery is being charged.

- Note** 1. The exterior **[Home]** button’s LED displays the same colored lights as well as using the battery charger to indicate the battery charging status.
2. You can still use **WZB 35** even when the battery is being charged.
3. Even if the battery is fully discharged, and the LCD screen was turned off, the LCD screen will be again turned on as immediately as the battery starts being charged by the charger or the DC adapter.
4. Fully discharged battery will not cause any data loss or damage. However, if you leave the battery without charging it for longer than 15 days, the clock may stop working; make sure to readjust the time when you restart using **WZB 35**.



⚠ Caution !

- WZB 35**’s battery is chargeable only when the power is on.
When the battery is fully discharged, and **WZB 35**’s power is off, please turn on the power to start charging.
- WZB 35** is equipped with free voltage standard system; therefore, it is compatible with wide voltage range between 100V and 250V.

This page describes **WZB 35**'s basic system setup such as the adjustment of LCD screen brightness, sound volume, and graphic type. **WZB 35** has been already configured with its default system prior to its release.

Therefore, you may not need to change its system setup.

- Note**
1. We encourage you to set up time as **WZB 35** is not configured with correct time upon its release.
 2. System configuration will be safely kept even if **WZB 35**'s battery becomes fully discharged, or the power is incidentally off.
 3. If you use the "Factory Default" option, it will be resulted in deleting the current system configuration, and restoring the default one.

How To Go To the "System Setup" Page

- 1 Press **[SET]** shortly on "Device Home".
You will be directed to the "Device Setup" menu screen.
Note. To go back to "Device Home" from the "Device Setup" menu, press **[Home]** shortly.
- 2 Press **[System Setup]** on the "Device Setup" menu screen.
You will be directed to the "System Setup" menu screen.
- 3 Press a setup menu button on the "System Setup" menu screen.
It will direct you to the setup page.



LCD & LED

"Brightness" Adjustment

WZB 35 provides 5 brightness levels of the LCD screen.

- 1 For brighter screen, press **[+]** on the Brightness Adjustment section.
For less bright screen, **[-]** on the Brightness Adjustment section.
- 2 Press **[OK]**. You will be redirected to the "System Setup" menu screen as the change is saved.

Caution !

In order to complete any changes made on system configuration, you must press **[OK]** button at the end. Using the **[Cancel]** or **[Home]** button will automatically cancel the configuration change process, and keep the previous status instead.



- 3 Press **[Home]** shortly. You will be redirected to “Device Home”.

“LCD Timeout” Settings

You can set up to automatically turn off the LCD screen when **WZB 35** is not being used for a while. This option helps you minimize the battery power consumption by automatically switching the system mode to the Sleep Mode.

- 1 To increase the LCD screen auto-off hours, press **[+]**.
To decrease the LCD screen auto-off hours, press **[-]**.

Note 1. **[+]** and **[-]** buttons increase or decrease the time setting by 10 seconds each time they are pressed.
2. You can configure the auto-off time from minimum 10 seconds to maximum 180 seconds and the default setting is configured to 30 seconds.
3. You can configure the on time infinitely .

- 2 Press **[OK]**.
You will be redirected to the “System Setup” menu screen as the change is saved.

- 3 Press **[Home]** shortly . You will be redirected to “Device Home”.



“Hard Button LED” Setup

Configure hard button’s LED status for your convenience.

- 1 To always leave the lights on, press **[On]**.
To always leave the lights off, press **[Off]**.

Note 1. LEDs are equipped with the **[Home]**, **[VOL +/-]** and **[CH +/-]** buttons.
2. Even if the LEDs are set as “On”, they will be automatically turned off as the LCD screen mode becomes the “Sleep” mode, and when the mode is canceled, the lights will be back on.

- 2 Press **[OK]**.
You will be redirected to the “System Setup” menu screen as the change is saved.

- 3 Press **[Home]** shortly. You will be redirected to “Device Home”.

Volume

“LCD Button’s Sound Volume” Setup

You can change on-touch button’s beep sound from level 1 to 6, and at the 1st level, the beep sound is muted.

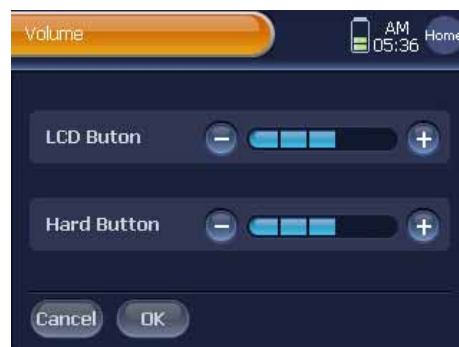
- 1 To increase the LCD button’s sound volume, press **[+]** on the LCD Button section. Or to reduce the LCD button’s sound volume, press **[-]** on the LCD Button section.
- 2 Press **[OK]**. You will be redirected to the “System Setup” menu screen as the change is saved.
- 3 Press **[Home]** shortly. You will be redirected to “Device Home”.



“Hard Button’s Sound Volume” Setup

You can change hard button’s beep sound from level 1 to 6, and at the 1st level, the beep sound is muted.

- 1 To increase the hard button’s sound volume, press **[+]** on the Hard Button section. Or to reduce the hard button’s sound volume, press **[-]** on the Hard Button section.
- 2 Press **[OK]**. You will be redirected to the “System Setup” menu screen as the change is saved.
- 3 Press **[Home]** shortly. You will be redirected to “Device Home”.



Date & Time

Configure the clock time displayed on the LCD screen’s System Display Area.

- 1 Select and press a button among **[Year]**, **[Month]**, **[Day]**, **[Hour]**, and **[Minute]**. The selected button will be highlighted, and enables you to use the **[+]** and **[-]** buttons at the bottom of your screen.
- 2 Adjust time by pressing the **[+]** and **[-]** buttons.
Note. AM/PM will be automatically adjusted followed by the time that is being set up.
- 3 Press **[OK]**. You will be redirected to the “System Setup” menu screen as the change is saved.
- 4 Press **[Home]** shortly. You will be redirected to “Device Home”.

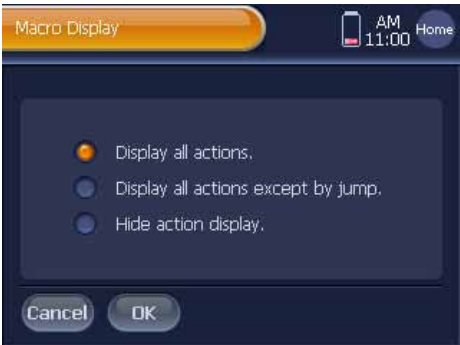


Macro Display

Configure Macro Display status for your convenience.

- 1 For always display all actions, check **[Display all actions]**.
- 2 To always display all actions except by jump, check **[Display all actions except by jump]**.
- 3 To always hide macro actions, check **[Hide action display]**.

Note. Refer to the page 41, “Macro”.

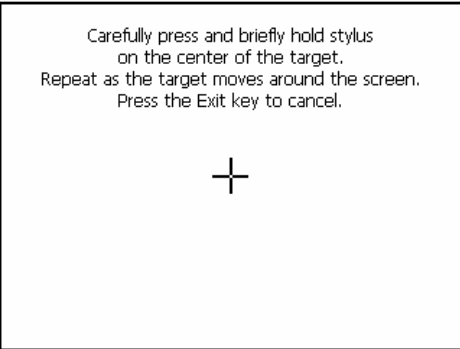
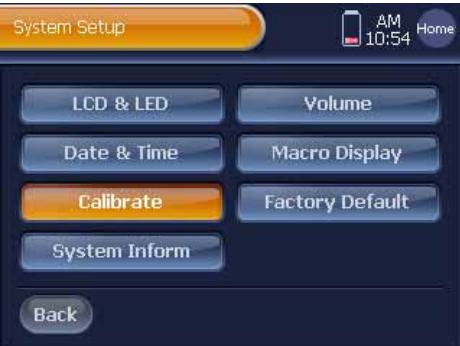


Calibrate

WZB 35 already has been configured with its default touchpoint system prior to its release. Therefore, you may not need to change the system setup. However, if you encounter an on-touch function disorder, we advise you to reset the touchpoint.

- 1 Press the center of the cross displayed on the Touchpoint setup screen. When you correctly press the cross, it will move and reappear on a different spot.
- 2 Continuously press the cross as it reappears several times on the Touchpoint Setup screen.
When the setup is successfully complete, you will be redirected to the “System Setup” menu screen.

- Note**
1. The cross will appear on total 5 different spots.
 2. Press the cross shortly, and then it will move and reappear on a different spot.
 3. If you incorrectly press the cross, the cross will continuously appear on the same spot.
 4. To cancel Touchpoint Setup, press the exterior **[EXIT]** button.
 5. Please avoid using sharp objects such as a ball point pen; they may cause damage onto the touch screen. Please use Stylus instead.



- 3 Press **[Home]** shortly. You will be redirected to “Device Home”.

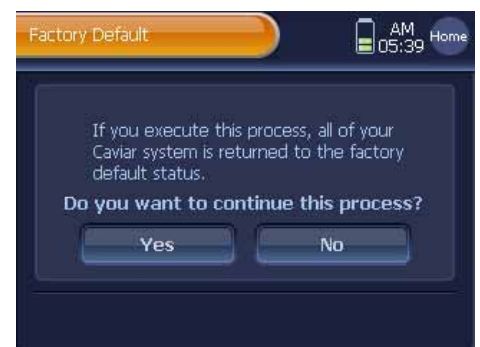
Factory Default

You can delete the entire data saved and registered in **WZB 35**, and reset the system.

Caution !

When executing the Factory Default, it will be resulted in deleting and losing the entire data saved in **WZB 35**; please use only when it is necessary.

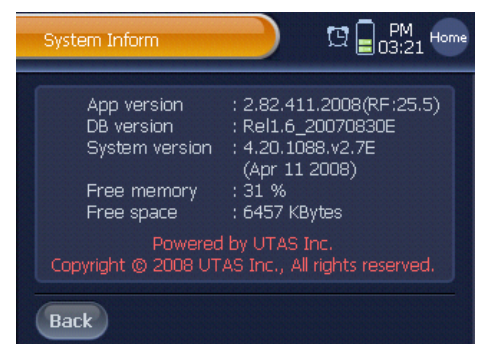
- 1 Press **[Yes]** on the “Factory Default” screen.
Then, you will be directed to the Setup Confirmation screen.
- 2 Press **[OK]**. **WZB 35** will be automatically turned off, and rebooted.



System Inform

System Information Review option allows you to check **WZB 35** system properties as well as remaining memory capacity.

Press **[Back]** button after reviewing the system properties. You will be redirected to the “System Setup” screen.



Basic Device Registration

Register remote control options on “Device Home”, and enjoy controlling various devices like TV, DVD, and home theater with one set controller.

The Definition Of Device Registration, And How It Works

Many manufacturers are introducing many devices in many different models that have unique **IR Codes** (Infrared Remote Control Code). **WZB 35** provides you a wide selection of the codesets, so that you can find codesets compatible with your devices, and control them with **WZB 35**.

You can find a codeset compatible with your device by;

- Using the codeset “**Autoscan**” function which automatically searches for a codeset from the entire codeset list of the device brand.
- Using the codeset “**Manual Selection**” function which enables you to view the entire codeset list of the device brand without autoscan.

Note. “Manual Selection” is same as codeset “Autoscan” except the “Autoscan” part. This function only can be effective when there are a small number of codesets provided by the device manufacturer. Thus, we encourage you to use codeset “Autoscan” function more often than the other function; please read the autoscan instructions listed below.

- 1 Press **[SET]** shortly on “Device Home”.

You will be directed to the “Device Setup” menu screen.

Note. To move back to “Device Home” from the “Device Setup” menu screen, press **[Home]** shortly.

- 2 Press **[Registration]** on the “Device Setup” menu screen, and select **[Basic Device Registration]** on the “Device Registration” menu screen. You will be directed to the Device Selection page.

Note. About “myDB Management”, refer to the page 57, “myDB Management”.

- 3 Select a “**Device**” from the device list, and press **[Next]**.

You will be directed to the Brand Selection page.

Note. If the device does not exist in the device list, press the **[None]** button, and refer to the page 23, “Exceptional Situation 1”.

- 4 Select a “**Brand**” from the brand list, and press **[Next]**.

Note. If the brand does not exist in the brand list, press the **[None]** button, and refer to the page 23, “Exceptional Situation 2”.



Brand Search

Press an alphabet button at the right side of the brand selection screen. It will bring up a list of brands whose names start with the corresponding alphabets.

i.e.) If you wish to find “YAMAHA”, press the **[WXYZ]** button 3 times.

It will bring up every brand name starting with ‘Y’.

Select “YAMAHA” among the brand names.

5 Select the **[Autoscan]** option.

Autoscan

“Autoscan” is to automatically select a codeset that is compatible with the selected device, and **WZB 35** uses “Power Off” signal as the codeset search standard.



6 To proceed with the Autoscan, turn on the device power, and then place **WZB 35** facing toward the device.

Note. Please place **WZB 35's** IR Transmitter facing toward the device, and make sure to keep less than 10 meter distance between the device and **WZB 35**.



7 Press **[Next]** on the autoscan information screen. It will automatically search codesets as immediately as the codeset autoscan preparation process is complete.

8 When the device **is automatically turned off** during autoscan process, press **[OK]** immediately.

WZB 35 will display an autoscanned codeset list.

- Note**
1. Make sure to press the **[OK]** button at least within 4 seconds after the device is turned off.
 2. “Progress Bar” on the autoscan screen displays the scanning progress.
 3. It may take a while depending on the numbers of codeset provided by the manufacturer.
 4. Pressing the **[Stop]** button temporarily stops the autoscan progress. Pressing the **[Yes]** button will reinitiate the progress from the stopped point.
 5. If the device is not turned off until the autoscan is complete, you will be informed with a failure message. If this happens, please refer to the page 23, “Exceptional Situation 3”.



- 9 Select a **Codeset** from the codeset list, and press **[Test]**.

You will be directed to the Remote Control page of the selected device.

Note. Pressing **[Back]** or **[Cancel]** will automatically cancel the auto scan result.

Codeset

Codesets listed on the code set list as the autoscan result have the same "Power Off" signal. Thus, you can find a codeset that is most suitable for your device through testing various codesets before registration.

- 10 Press a **Remote Control Button** to test the codeset compatibility.

To finish testing, press **[Done]**.

You will be directed to the Device Registration Confirmation screen.

Note 1. To make sure that you have the most suitable codeset for your device, we encourage you to test with Remote Control buttons as many as you can.

2. Please place **WZB 35** facing toward the device, and keep less than 10 meter distance between the device and **WZB 35** while testing.

3. To move between remote control pages, please use the exterior **[◀ , PAGE , ▶]** buttons.

- 11 If the test result is satisfactory, please press **[Yes]**.

Note. If you press the **[No]**, you will be redirected to the autoscanned codeset list, so that you can select a different code, and proceed with testing until you find the most suitable codeset.

- 12 In the next screen, press **[Next]**.

You will be directed to the "Device Home" page.

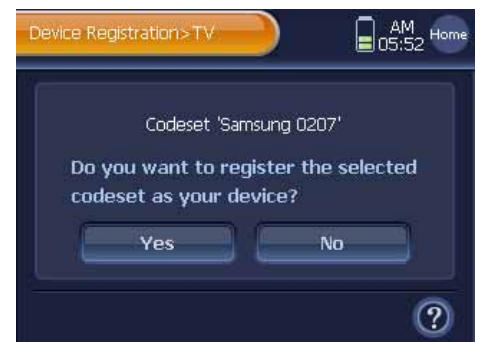
- 13 In the "Device Home" page, select and press a location to add the device button.

A new device button will be registered on the selected location.

Note 1. When you select an incorrect or unavailable location, you will hear a beep sound alerting that the location unavailability.

2. You can register maximum **128** device buttons on the Device Home page.

- 14 To finish, press **[Done]**.



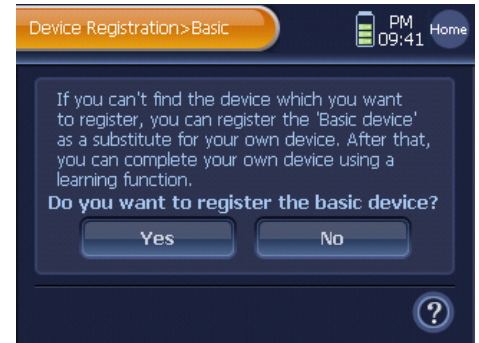
Device Registration instructions under Exceptional Situations

Situation 1. When a device does not exist in the Device List

- 1 Press **[None]** on the Device Selection screen.
- 2 Press **[Yes]** on the next screen, and then a Basic Device button will be created on “Device Home”.

Note. Any Basic Device's Remote Control button cannot be used at this point because it is not registered with a codeset, and thus IR signals are not available.

- 3 Use the “IR Learn” function to copy the device's original remote controller function to the basic device's remote control button.
(Refer to the page 53, “IR Learn”).



Situation 2. When a selected device's manufacturer does not exist in the Brand List

- 1 Press **[None]** on the Brand Selection screen.
- 2 Press **[Yes]** on the next screen, and then a Selected Device button will be created on “Device Home”.

Note. This newly created Device's Remote Control button cannot be used at this point because it is not registered with a codeset, and thus IR signals are not available.

- 3 Use the “IR Learn” function to copy the device's original remote controller function to the newly created device's remote control button.
(Refer to the page 53, “IR Learn”).



Situation 3. When the Autoscan option fails to find a codeset compatible with the target device

- 1 **WZB 35** will display a failure message and automatically move to the next screen.
- 2 Press **[OK]**, and then a Selected Device button will be created on “Device Home”.

Note. This newly created Device's Remote Control button cannot be used at this point because it is not registered with a codeset, and thus IR signals are not available.

- 3 Use the “IR Learn” function to copy the device's original remote controller function to the newly created device's remote control button.
(Refer to the page 53, “IR Learn”).



Extra Information

- 1 If the Autoscan option fails to find a compatible codeset, you may use the other scan method, codeset “Manual Selection” before trying the “Exceptional Situation 3” instructions. In this way, you can test the entire codeset of the device brand, and it is more effective to find a compatible code, although it takes more time.
- 2 Even if you have correctly registered a device, sometimes you may not be able to find certain buttons of the original remote controller on the **WZB 35**'s Remote Control page. In this case, we encourage you to use the “IR Learn” function.

24

Edit Home

Once you complete registering a device on **WZB 35**, the device will exist as a “Device Button” on “Device Home”. You can edit the Device Home Page and the Device Button by using various functions provided with the “Edit Home” menu.

1) Add Device Home Page

Add new device home pages on Device Home. It is convenient to have a new device's home page prior to changing the device's button locations.

2) Delete Device Home Page

Delete device home pages that are no longer needed.

3) Hide Device Home Page

Hide device home pages that are no longer displayed.

4) Add Device Button

Add a new device button on the “Device Home” page. Unlike device registration, this function adds a device button which does not have remote control option; you can create and customize a new device button by using the “Edit Remote Control” options.

5) Copy Device Button

You can copy and paste your device buttons for your needs.

6) Delete Device Button

Delete device buttons that are no longer needed.

7) Move Device Button

Move device buttons to new locations.

8) Change Type & Text

You can change types or names of your device button.

To use the “Edit Device Home” options, please follow the next instructions.

1 Press **[SET]** shortly on “Device Home”.

You will be directed to the "Device Setup" menu screen.

Note. To go back to “Device Home” from the "Device Setup" menu, press **[Home]** shortly.

2 Press **[Edit Home]** on the "Device Setup" menu.

You will be directed to the “Edit Device Home” screen.

3 Proceed with device home editing options by pressing menu buttons on the “Edit Device Home” screen.



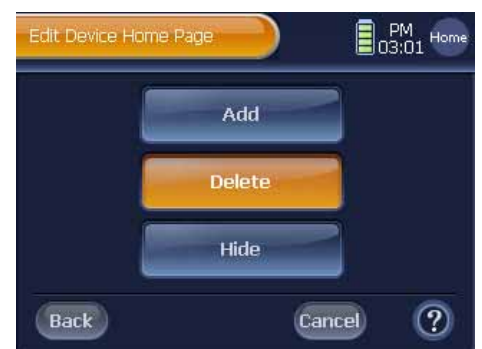
Add Device Home Page

- 1 Press **[Page]** on the “Edit Device Home” screen.
- 2 Press **[Add]** on the “Edit Device Home Page” screen.
- 3 Press **[Yes]** on the “Add Device Home Page” screen, and then a new page will be added to Device Home.
Note 1. The newly created home page will be added to the last page of Device Home as a blank page.
2. You can add maximum 32 device home pages.
- 4 To continue adding pages, press **[Yes]**, or **[No]** to finish on the next screen.



Delete Device Home Page

- 1 Press **[Page]** on the “Edit Device Home” screen.
- 2 Press **[Delete]** on the “Edit Device Home Page” screen.
- 3 Press **[Next]** on the next screen, and then you will be directed to “Device Home”.
- 4 Select a page to delete, and press **[Delete]**. The home page will be deleted.
Note. You cannot delete a home page which has device buttons.
- 5 To continue deleting home pages, press **[Yes]**, or **[No]** to finish on the next screen.



Hide Device Home Page

- 1 Press **[Page]** on the “Edit Device Home” screen.
- 2 Press **[Hide]** on the “Edit Device Home Page” screen.
- 3 Press **[Show]** or **[Hide]** on the “Hide Device Home Page” screen.
And If you want to save, press **[OK]**.

Note 1. You cannot hide the 1st Device Home page.
2. ‘Hide’ page does not appear on Device Home screen but only on setup mode.
3. When jumping or moving to a page with ‘Hide’ setup, it is always moved to ‘Page 1’ of the Device Home page.



Add Device Button

- 1 Press **[Button]** on the “Edit Device Home” screen.
 - 2 Press **[Add]** on the “Edit Device Button” screen.
You will be directed to the “Keyboard” screen.
 - 3 Use the keyboard, select a type and enter a name for the new device button.
- Note.** To use the keyboard, refer to the page 27 “Tip. Keyboard Functions”.
- 4 After entering a new name, press **[OK]** on the “Keyboard” screen.
And press **[Next]**, you will be directed to “Device Home”
 - 5 In the “Device Home” page, select and press a location to add the new device button. “Device Home” will display a new device button.

Note 1. When you select an incorrect or unavailable location, you will hear a beep sound alerting that the location unavailability.
2. Unlike device buttons that are registered through the Basic Device Registration option, this newly created device button does not have Remote Control option because its codeset has not been determined.

- 6 To exit “Device Home” page, press **[Done]**.
You will be directed to “Keyboard” screen.
You can repeat adding device button, or press **[Cancel]** to finish.



Tip. Keyboard Functions

1. Displays the default device button and enables you to directly enter a new name on the button; helps you to check the name change easily.
2. The keyboard supports total 6 pages of the following characters and ASCII codes.
[Alphabet], [Alphabet + Caps], [Number], [Number + Shift], [ASCII Code], [ASCII Code + Shift], [AV, Lighting Graphic Symbol]
3. You can enter maximum 2 lines of characters.
4. You can select the button type with **[Type]** button. If you press **[Type]**, will be directed to "Button Folder" page, 3 types of button presented.
5. You can choose a hidden font for pure graphic buttons.
To display the text font, press the "Hide" button for **[OFF]** status.
. To hide, press the "Hide" button for **[ON]** status.
6. Two font sizes are provided: Large and Small. To change the font size, press the **[Size]** button.
7. You can choose a font color from total 12 different colors. To change the font color, press the **[Color]** button.
8. If you press **[Preview]**, you can see the completed button image in advance.



Copy Device Button

- 1 Press **[Button]** on the “Edit Device Home” screen.
- 2 Press **[Copy]** on the “Edit Device Button” screen.
- 3 Press **[Next]** on the next screen, and then you will be directed to “Device Home”.

- 4 Select and press a Device button to copy.

Note 1. To move between pages, and find a device button, use the exterior **[◀, Page, ▶]** button.

2. To exit from the “Device Home” screen, press **[Exit]**.

- 5 Press **[Next]** on the next screen, and then you will be redirected to “Device Home”.

- 6 Select and press a location on the device home page to paste the copied device button.

The device button will be registered on the selected location.

Note 1. When you select an incorrect or unavailable location, you will hear a beep sound alerting that the location unavailability.

2. After the new device button is registered on the selected location, you can continue changing the button's location to different spots.

- 7 Press **[Done]**. You can continue copying device buttons or finish the process by moving back to step 3.



Delete Device Button

- 1 Press **[Button]** on the “Edit Device Home” screen.
- 2 Press **[Delete]** on the “Edit Device Button” screen.
- 3 Press **[Next]** on the next screen, and then you will be directed to “Device Home”.
- 4 Select and press a Device button to delete.
- 5 Press **[Yes]** on the Button Deletion Confirmation screen. The button will be deleted.
- 6 To continue deleting buttons, press **[Yes]**, or **[No]** to finish.



Move Device Button

- 1 Press **[Button]** on the “Edit Device Home” screen.
- 2 Press **[Move]** on the “Edit Device Button” screen.
- 3 Press **[Next]** on the next screen, and then you will be directed to “Device Home”.
- 4 Select and press a Device button to move.
The button will be highlighted, and waiting to be moved.



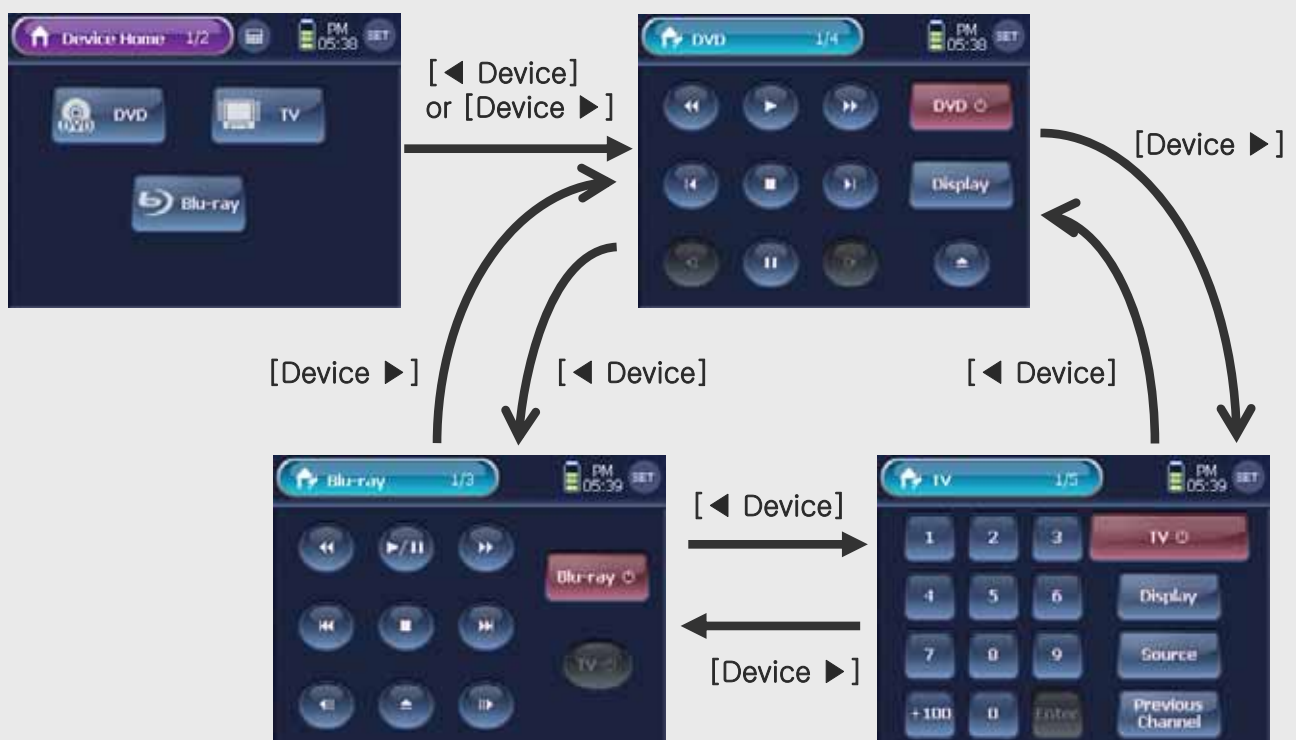
- 5 Select and press a new location to move the device button.
The button will be moved to the location.

Note. When you select an incorrect or unavailable location, you will hear a beep sound alerting that the location unavailability.

- 6 To finish moving button, press **[Done]**.
You can continue moving device buttons or finish the process by moving back to step 3.

Note. When you move a device button, it will affects the order of Remote Control pages turned by the **[◀ Device]** and **[Device ▶]** buttons.

Tip. Remote Control page order turned by the exterior **[◀ Device]** and **[Device ▶]** buttons



Change Type & Text

- 1 Press **[Button]** on the “Edit Device Home” screen.
- 2 Press **[Change Type & Text]** on the “Edit Device Button” screen.
- 3 Press **[Next]** on the next screen, and then you will be directed to “Device Home”.
- 4 Select and press a Device button to rename. You will be directed to the “Keyboard” screen which enables you to enter a new name.
- 5 Use the keyboard to enter a new name for the device button.
Note. To use the keyboard, refer to the page 27 “Tip. Keyboard Functions”.
- 6 After entering a new name, press **[OK]** on the “Keyboard” screen. You will be directed to “Device Home” that has the device button with the new name.
- 7 To finish changing button name, press **[Done]**.
 To continue changing button names, repeat step 4, 5 and 6.



31

Edit Remote Control

Registered devices have their own “Remote Control” pages. “Remote Control” page is composed of various “Remote Control” buttons. You can edit these “Remote Control” pages and buttons by using various options provided with the “Edit Remote Control” menu.

1) Add Remote Control Page

Add new devices’ remote control pages. It is convenient to have a remote control page prior to changing remote control button locations.

2) Delete Remote Control Page

Delete remote control pages that are no longer needed.

3) Add Remote Control Button

Add new remote control buttons on remote control pages. Use the “IR Learn” option to customize the newly created remote control buttons.

4) Copy Remote Control Button

Copy and paste your favorite remote control buttons for individual devices to a remote control page.

5) Delete Remote Control Button

Delete remote control buttons that are no longer needed.

6) Move Remote Control Button

Move remote control buttons to new locations.

7) Change Type & Text of Remote Control Button

You can change types or names of remote control button.

8) Set Remote Control Button IR

Customize the IR signal output mode and the default IR output quantity of a specific remote control button.

9) Import Control Code

You can import and retrieve the control code of the remote control button.

To use the “Edit Remote Control” options, please follow the next instructions.

1 Press **[SET]** shortly on “Device Home”.

You will be directed to the "Device Setup" menu screen.

Note. To go back to “Device Home” from the “Device Setup” menu, press **[Home]** shortly.

2 Press **[Edit Remote Control]** on the "Device Setup" menu screen.

You will be directed to the “Edit Remote Control” screen.

3 Proceed with editing options by pressing menu buttons on the “Edit Remote Control” screen.



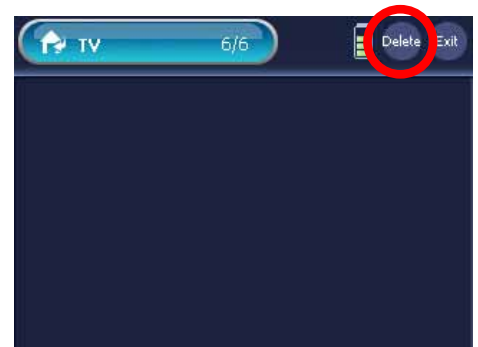
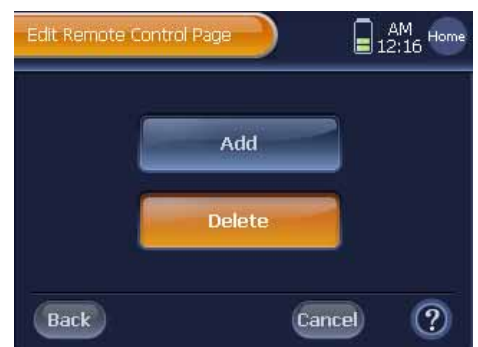
Add Remote Control Page

- 1 Press **[Page]** on the “Edit Remote Control” screen.
 - 2 Press **[Add]** on the “Edit Remote Control Page” screen.
 - 3 Press **[Next]** on the next screen, and then you will be directed to “Device Home”.
 - 4 Select and press a Device button on “Device Home” to add a new Remote Control page.
- Note** 1. To move between pages, and find a device button, use the exterior **[◀, Page, ▶]** button.
2. To exit from the “Device Home” screen, press **[Exit]**.
- 5 Press **[Yes]** on the “Add Remote Control Page” screen, and then a new Remote Control page will be added to the device.
- Note** 1. The new Remote Control page will be added on the last page of the selected device’s Remote Control page.
2. You can add maximum 32 Remote Control pages.
- 6 To continue adding pages, press **[Yes]**, or **[No]** to finish on the next screen.



Delete Remote Control Page

- 1 Press **[Page]** on the “Edit Remote Control” screen.
 - 2 Press **[Delete]** on the “Edit Remote Control Page” screen.
 - 3 Press **[Next]** on the next screen, and then you will be directed to “Device Home”.
 - 4 Select and press a Device button on “Device Home” to delete its Remote Control page. You will be directed to the selected device’s 1st Remote Control page.
 - 5 Select a page to delete, and press **[Delete]**. Then, the page will be deleted.
- Note.** You cannot delete a remote control page that has remote control button.
- 6 To continue deleting pages, press **[Yes]**, or **[No]** to finish on the next screen.



Add Remote Control Button

- 1 Press **[Button]** on the “Edit Remote Control” screen.
- 2 Press **[Add]** on the “Edit Remote Control Button” screen.
You will be directed to the “Keyboard” screen.
- 3 Use the keyboard, select a type and enter a name for the new device button.

Note. To use the keyboard, refer to the page 27 “Tip. Keyboard Functions”.

- 4 After entering a new name, press **[OK]** on the “Keyboard” screen.
And press **[Next]**, you will be directed to “Device Home”
- 5 Select a Device button on “Device Home” to add the newly added Remote Control button. You will be directed to the selected device’s 1st Remote Control page.

Note 1. To move between pages, and find a device button, use the exterior **[◀, Page, ▶]** button..

2. To exit from the “Device Home” screen, press **[Exit]**.

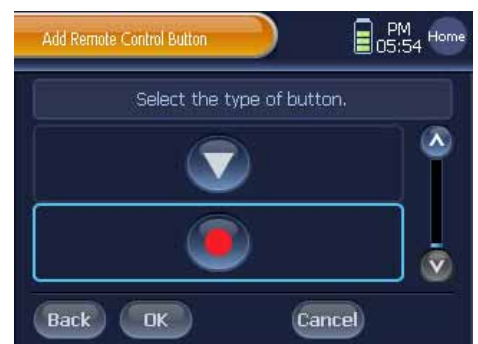
- 6 Select and press the new Remote Control button location to save the button on the Remote Control page. The button will be saved on the selected location.

Note. The button location becomes varied depending on the selected Remote Control type. When you select an incorrect or unavailable location, you will hear a beep sound alerting that the location unavailability.

- 8 After the new Remote Control button is registered on the selected location, you can continue changing the button’s location to different spots.

Note. Repeat the button and location selection processes to change the button’s location.

- 9 To exit Remote Control page, press **[Done]**.
You will be directed to “Keyboard” screen.
You can repeat adding Remote Control button, or press **[Cancel]** to finish.



Copy Remote Control Button

- 1 Press **[Button]** on the “Edit Remote Control” screen.
- 2 Press **[Copy]** on the “Edit Remote Control Button” screen.
- 3 Press **[Next]** on the next screen, and then you will be directed to “Device Home”.
- 4 Select and press a Device button on “Device Home” to copy its Remote Control button. You will be directed to the selected device’s 1st Remote Control page.

Note 1. To move between pages, and find a device button, use the exterior **[◀, Page, ▶]** button.
2. To exit from the “Device Home” screen, press **[Exit]**.

- 5 Select and press a Remote Control button to copy.
- 6 Press **[Next]** on the next screen, and then you will be redirected to “Device Home”.
- 7 Select and press a Device button on “Device Home” to paste the copied Remote Control button on its Remote Control page. You will be directed to the selected device’s 1st Remote Control page.
- 8 Select and press a location on the Remote Control page to paste the copied Remote Control button.
The Remote Control button will be registered on the selected location.

Note . The button location becomes varied depending on the selected remote control button type. When you select an incorrect or unavailable location, you will hear a beep sound alerting that the location unavailability.

- 9 After the new Remote Control button is registered on the selected location, you can continue changing the button’s location to different spots.

Note . Repeat the button and location selection processes to change the button’s location.

- 10 Press **[Done]**. You can continue copying remote control buttons or finish the process by moving back to step 3.



Delete Remote Control Button

- 1 Press **[Button]** on the “Edit Remote Control” screen.
- 2 Press **[Delete]** on the “Edit Remote Control Button” screen.
- 3 Press **[Next]** on the next screen, and then you will be directed to “Device Home”.
- 4 Select and press a Device button on “Device Home” to delete its Remote Control button. You will be directed to the selected device’s 1st Remote Control page.

Note 1. To move between pages, and find a device button, use the exterior **[◀, Page, ▶]** button.
 2. To exit from the “Device Home” screen, press **[Exit]**.

- 5 Select and press a Remote Control button on the Remote Control page to delete.
- 6 Press **[Yes]** on the Button Deletion Confirmation screen. The selected Remote Control button will be deleted.
- 7 To finish deleting button, press **[Done]**. To continue deleting buttons, repeat step 5 and 6.



Move Remote Control Button

- 1 Press **[Button]** on the “Edit Remote Control” screen.
- 2 Press **[Move]** on the “Edit Remote Control Button” screen.
- 3 Press **[Next]** on the next screen, and then you will be directed to “Device Home”.
- 4 Select and press a Device button on “Device Home” to move its Remote Control button. You will be directed to the selected device’s 1st Remote Control page.
- 5 Select and press a Remote Control button to move its location. The selected button will be highlighted, and waiting to be relocated.
- 6 Select and press a new location that the selected Remote Control button will be moved to. The button will be move to the location.



- Note** 1. The button location becomes varied depending on the selected remote control button type. When you select an incorrect or unavailable location, you will hear a beep sound alerting that the location unavailability.
2. You cannot switch locations between remote control buttons; you cannot select another remote control button as a selected button's new location.
- 7 To finish moving buttons, press **[Done]**.
To continue moving buttons, repeat step 4, 5 and 6.

Change Type & Text Remote Control Button

- 1 Press **[Button]** on the “Edit Remote Control” screen.
- 2 Press **[Change Type& Text]** on the “Edit Remote Control Button” screen.
- 3 Press **[Next]** on the next screen, and then you will be directed to “Device Home”.
- 4 Select and press a Device button on “Device Home” to rename its Remote Control button. You will be directed to the selected device's 1st Remote Control page.

Note 1. To move between pages, and find a device button, use the exterior **[◀, Page, ▶]** button.

2. To exit from the “Device Home” screen, press **[Exit]**.

- 5 Select and press a Remote Control button to change its name. You will be directed to the “Keyboard” screen which enables you to enter a new name.

- 6 Enter a new name by using the keyboard.

Note. Refer to the page 27, “Tip. Keyboard Functions”.

- 7 When you finish entering a new name, press **[OK]** on the “Keyboard” screen. You will be directed to the Remote Control page which has the Remote Control button with the new name.

Note. When a button's name is successfully changed, the **[Exit]** button will be changed to the **[Done]** button.

- 8 To finish renaming buttons, press **[Done]**.
To continue renaming buttons, repeat step 5, 6, and 7.



Set Remote Control Button IR

This setting method is used to customize the IR signal output mode and the default IR output quantity of a specific remote control button to suit the properties of the corresponding device.

'Set Remote Control Button IR' Application Examples

- ① To achieve desired operation results on a device via the IR signal output with just one touch of a remote control button, you can set the default IR signal output to the desired IR signal quantity.
For example, to raise or lower an electrically-powered screen, you don't need to press and hold down the corresponding button continuously. If the default IR signal output quantity is set appropriately, such operations can be performed with just one touch of the button.
- ② When performing any of the macro actions registered to the macro button, one touch of the button results in IR signals, namely the set 'Default IR Output', to be sent to the device to be operated. It is possible that the IR signal output quantity of the special remote control button may be insufficient, resulting in failure to operate the special device. In such cases, the errors should be fixed by adjusting the 'Default IR Output' of the corresponding remote control button to the appropriate level.
For example, given that a macro action is registered to a remote control button with the 'Default IR Output' setting of one time, if performance of the macro action results in an error, the error may be addressed and proper operation of the device achieved by modifying the 'Default IR Output' to three times.

- 1 Press **[Set IR]** on the "Edit Remote Control" screen.
- 2 Press **[Next]** on the next screen, and then you will be directed to "Device Home".
- 3 Select and press a Device button on "Device Home" for setting the Remote Control button IR. You will be directed to the selected device's 1st Remote Control page.

Note 1. To move between pages, and find a device button, use the exterior **[◀, Page, ▶]** button.

2. To exit from the "Device Home" screen, press **[Exit]**.

- 4 Select and press a Remote Control button to set the IR output mode. You will be directed to the "IR Setting" screen.



- 5 Configure IR output mode of selected remote control button through the "IR Setting" screen.

■ Remote Control Button IR Setting Instructions

① 'IR Output Mode' Setting

1. '**Enable**' Setting (Checked status)

This applies when the **[Repeat IR while button is pressed]** button is activated. The IR signals will be output continuously as long as the corresponding remote control button is pressed.

2. '**Disable**' Setting (Unchecked status)

This applies when the **[Repeat IR while button is pressed]** button is not activated. The IR signals will not be output continuously. Even if the corresponding button is pressed and held, only the '**Default IR Output**' will be transmitted.

Note. The default status of all registered remote control buttons is that of 'Enable', meaning they are set to 'Repeat IR while button is pressed'.

② 'Default IR Output' Setting

1. This setting dictates the number of IR signals to be transmitted, according to the number set in the box, when the corresponding remote control button is pressed once.
2. The **[+]**, **[-]** button is used to set the number of times from a minimum of 1 to a maximum of 255.

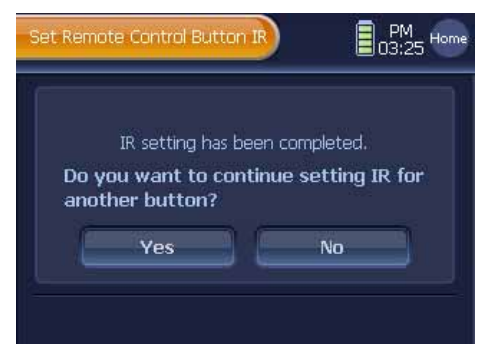
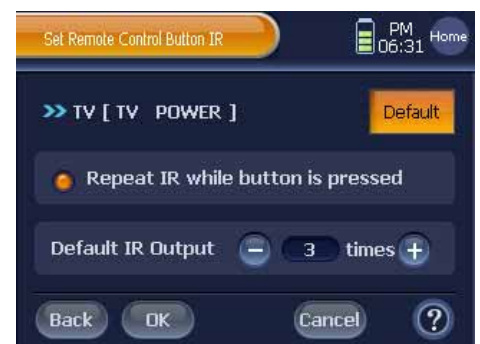
Note. The default status of all registered remote control buttons is equivalent to the current IR output quantity saved in the IR data of each individual remote control button.

③ 'Default' Settings

1. Pressing the **[Default]** button automatically sets the 'IR Output mode' and 'Default IR Output' of the corresponding remote control button to 'IR Default settings' status.
2. '**IR Default Settings**' Status
 'IR Output Mode' : Continuous IR Transmission enabled
 'Default IR Output' : IR Transmission 3 Times

- 6 To finish 'Set Remote Control Button IR', press **[OK]** button.

- 7 To continue setting IR, press **[Yes]**, or **[No]** to finish on the next screen.



Import Control Code

You can retrieve the control code of the remote control button that is being used after being registered on the Device Home or the built-in control code database inside **WZB 35**, and put the code in a button you want to use.

1 Press **[Import Control Code]** on the “Edit Remote Control” screen.

2 Press **[Next]** on the next screen, and then you will be directed to “Device Home”.

3 Select and press a Device button on “Device Home” to import the control code its Remote Control button. You will be directed to the selected device’s 1st Remote Control page.

Note 1. To move between pages, and find a device button, use the exterior **[◀, Page, ▶]** button.

2. To exit from the “Device Home” screen, press **[Exit]**.

4 Select a Remote Control button you would like to retrieve and use.

Note. You can put the control code in the touch button as well as the external hard button.

5 Press **[Next]** on the next screen, and then you will be directed to the “Import Control Code” screen.

6 You can find a control code for import and paste to your remote control button from “**Control button**” or “**IR Library**”.
To select the control code, follow the instructions described below.



Import Control Code from “Control button”

① Press **[Control button]**, then all kinds of user defined devices are displayed on device list.

② Select a “**Device**” and “**Button**” in the order, then press **[OK]** to complete.

Note. To make sure that you have the most suitable control code for your button, you can use **[Test]** button.

Import Control Code from “IR Library”

- ① Press **[IR Library]**, then control code database for all devices possessed by **WZB 35** itself is indicated in the Device list.

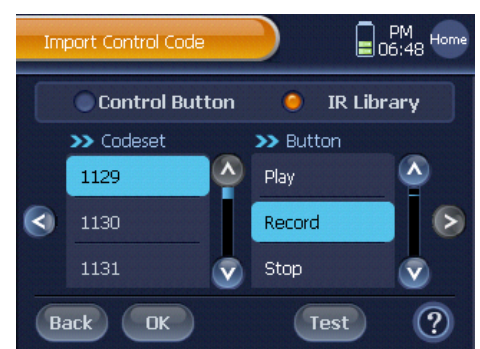
Note. “IR Library” provides you a distinguished control code data bases for each device that are controlled by remote control.

- ② Select a “Device” and “Brand” in the order, then press the right arrow button to see the control code.

- ③ Select a “Codeset” and “Button” in the order, then press **[OK]** to complete.

Note. To make sure that you have the most suitable control code for your button, you can use **[Test]** button.

- 7 To continue setting IR, press **[Yes]**, or press **[No]** to finish on the next screen.



WZB 35 enables you to trigger multiple actions of various devices just by one touch. For instance, if you want to watch a DVD, you need to turn on the TV, set up the output as DVD, and press the DVD player's play button. This also applies to music manias who enjoy listening to music through Hi-Fi audio system. You can eliminate such hassles by using **WZB 35's** macro options, and just enjoy your videos and music.

How To Use Macro

- 1 Press a Remote Control button which contains Macro Action on the remote control page.
- 2 The Remote Control button will activate the series of Macro Actions that have been memorized with it.

Note. When Macro Actions are activated;

- 1) IR Indicator displays the actions in the order that they have been registered as the corresponding devices are being activated.
- 2) The Macro action names will be displayed on the remote control screen.
(It is possible to hide the display of macro action names optionally .
Refer to the page 18, "Macro Display".)
- 3) Exterior hard key such as **[Home]**, **[CH+/-]**, **[VOL +/-]**, **[Mute]**, **[Menu]**, **[Left, Right, Up, Down]**, **[Exit]** and **[Mute]** can be used in Macro.
- 4) If you want to stop activating the Macro Action, press the exterior hard key **[HOME]**.



Create Macro

- 1 Press **[SET]** on the "Device Home " screen shortly.
You will be directed to the "Device Setup" menu screen.
- 2 Press **[Macro]** on the "Device Setup" menu screen.
- 3 Press **[Next]** on the next screen, and then you will be directed to "Device Home".
- 4 On the "Device Home" screen, select and press the Device button having Remote Control button that will be used as Macro. You will be directed to the selected device's 1st Remote Control page.

Note 1. To move between pages, and find a device button, use the exterior **[◀, Page, ▶]** button.
2. To exit from the "Device Home" screen, press **[Exit]**.



- 5 Select and press a Remote Control button to set the Macro Action. You will be directed to “Macro action List” screen.

Note. You can select the exterior hard key as a macro button also.

- 6 You will view the properties of selected remote control button in “Macro Action List”.

Note. This new Macro will be named same as the selected remote control button.

- 7 Press **[Add]** button on the “Macro Action List” screen. You will be directed to the “Device Home” screen.


- 8 Select and press a Device button having Remote Control button that will be used as Macro Action. You will be directed to the selected device’s 1st Remote Control page.

- 9 Select a Remote Control button that will be used for a Macro Action, and then press **[OK]** button.

You will be directed to the “Macro Action List” screen, and the selected Remote Control button will be displayed on the list in the order that they have been registered as a Macro Action.

- 10 To finish Macro Action Setup, press **[OK]** on “Macro Action List”.

The Macro Action will be registered on the Remote Control button.

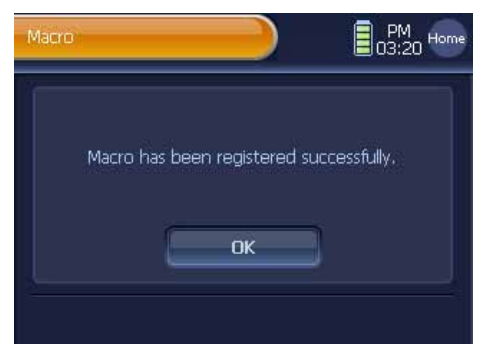
- Note** 1. The **[Test]** option allows you to test macro actions before the button registration. Make sure that **WZB 35** is placed and facing toward the target device before pressing the **[Test]**.
2. When pressing the **[Exit]** button, you will be automatically sent back to Step 3 as the configuration process is canceled.
3. Make a distinction from normal remote control button, this icon () will be displayed at the Remote Control button which contains Macro Action in setup mode.

You can also use the following options on the “Macro Action List”.

- ① Press **[Add]** to continue setting up macro actions.
- ② Press **[Delete]** to delete macro actions that are not needed.
- ③ Press **[Move]** to switch the order of macro actions registered on the Macro Action List.
- ④ Press **[Delay]** to delay executing the macro actions.
- ⑤ Press **[Jump]** to move to a desired page while a macro action is in progress or upon its completion.

✳ For more details, refer to the page 43, “Edit Macro Action”.

- 11 Press the **[OK]** button on the Macro registration Confirmation screen. You will be redirected to the “Device Setup” menu screen.



Edit Macro Action

Edit Macro Actions for your convenience.

- 1 Select and press a Remote Control button to edit its registered Macro Actions. You will be directed to the selected Macro button's "Macro Action List".
- 2 Edit Macro Actions on the "Macro Action List" screen as follows.

■ How To Delete Macro Action

- ① On the "Macro Action List" screen, select and press a macro action to delete from the list.
- ② Press **[Delete]** on the "Macro Action List" screen.
- ③ The selected macro action will be deleted.

■ How To Set Up Macro Action Delay

- ① Press **[Delay]** on the "Macro Action List" screen.
- ② The Delay command will be set up, and displayed as **"Delay 0.4 sec"** at the bottom of the Macro Action List.

Note 1. The default delay time is 0.4 second.
 2. To set up "Delay Command" between actions, select a macro action, and press the **[Delay]** button. The delay command will be added right under the selected macro action.

■ To Change Registered "Delay" Time

- ① Press a registered "Delay Command" on the "Macro Action List" screen.
- ② Use the **[+]** and **[-]** buttons at the right side of your screen to modify the delay time.

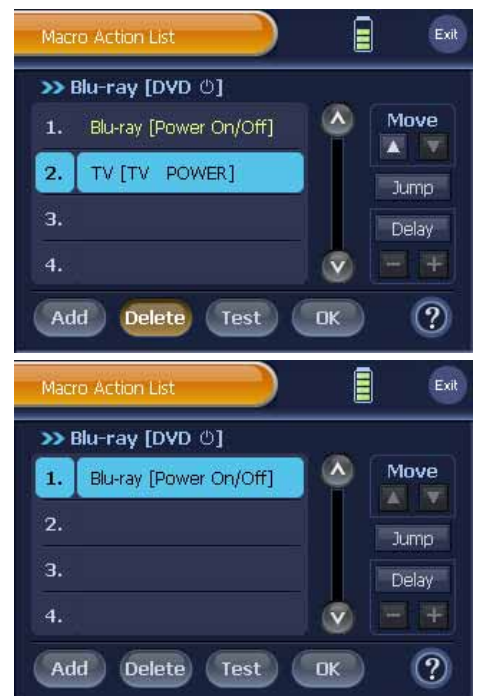
Note. You can increase or decrease the delay time by 0.1 second each time you press **[+]** or **[-]** button. You can set up delay time from minimum 0.2 second to maximum 50 seconds.

👉 What is "Macro Action Delay" ?

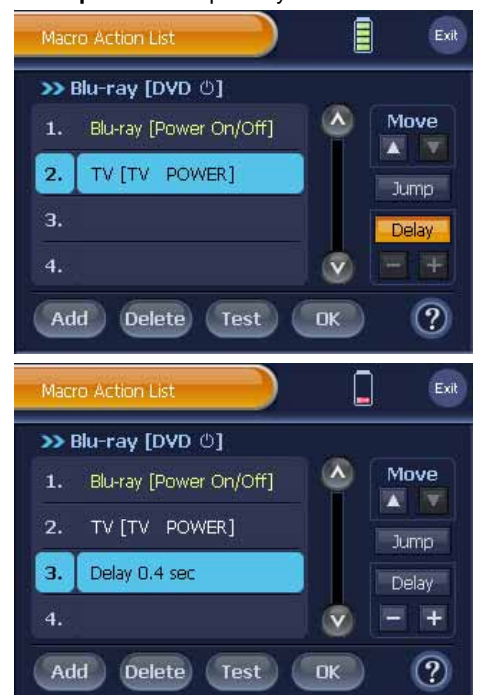
When you think about TV, you cannot change the channel as immediately as a TV is turned on. This is because most of TV models require minimum 3 seconds to maximum 10 seconds of time to actually have its power on even after it is physically turned on. And during this time, TVs do not accept any incoming signals from the remote controllers. In other words, any macro actions registered within the time will be skipped and not work. **WZB 35's** delay setup option enables you to pause a next macro action after a macro action is activated, so that you can avoid situations as explained above.



Example 1. Delete Action: "TV Power"



Example 2. Set Up Delay



■ How To Change The Order of Macro Action

- ① On the “Macro Action List”,
select and press a macro action to move its location.
- ② Use the Move buttons,
[▲] and [▼] to move the macro action to a new location.

■ How To Use Macro Jump

The macro ‘**Jump**’ function jumps to a desired page while a macro action is in progress or upon its completion. This convenient function allows for movement to the desired page and progress to the next stage upon execution of a macro without requiring any separate operation.

- ① Press [**Jump**] on the “Macro Action List” screen.
- ② Press [**Next**] on the next screen, and then you will be directed to the “Device Home” page.
- ③ Press [**Select**] on the desired page to register ‘Jump Page’ in the Macro Action List.

Note 1. All pages are open to selection, including Device Home, Macro, Remote Control pages.

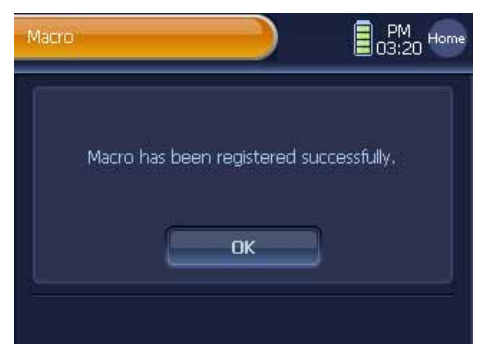
2. Use the Device button and hard buttons to move to selection.

- ④ The ‘Page Jump’ command will be set up, and displayed at the bottom of the Macro Action List.

🚫 Caution !

1. If the Macro Jump is performed in the middle of a macro action, movement to the desired page is executed followed by continuation of the next action.
 2. If the page designated by the macro jump has been deleted, the macro jump is automatically cancelled.
 3. If the pages preceding the page designated by the macro jump have been deleted, the jump page is automatically readjusted forward by the number of previous pages deleted.
 4. If performing [**Test**], any macro jump is not conducted.
- 3 After editing macro actions, press [**OK**] on the “Macro Action List” screen. The edited Macro button will be saved to the remote control page.
- Note** 1. Make sure to press the [**OK**] button, otherwise the changes made on the Macro button will not be saved.
2. When pressing the [**Exit**] button, all the changes made on the Macro button will be canceled, and you will be redirected to step 3.
3. The [**Test**] button enables you to test macro action changes before saving them. Make sure to place **WZB 35** facing toward the target device before pressing the [**Test**] button.
- 4 Press the [**OK**] button on the Macro registration Confirmation screen. You will be redirected to the “Device Setup” menu screen.

Example 3. Use Macro Jump



45 Timer

Use the Timer options to set up device activation time and the actions. When using the options, you can set up your TV to be turned on, and play a set channel at 7 am in the morning as well as your VCR to automatically start recording a TV drama on set time.


How To Use Timer

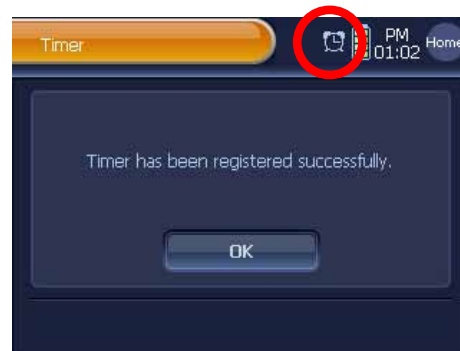
To activate a timer registered on “Timer List”, follow the instructions described below.

- 1 Press **[SET]** on the “Device Home ” screen shortly.
You will be directed to the “Device Setup” menu screen.
- 2 Press **[Timer]** on the “Device Setup” menu screen.
You will be directed to the “Timer List” screen.
- 3 Select a Timer from the “Timer List”, and press its “**Timer Activation Setup**” button to switch the button status to **[ON]**.

Note 1. “Timer Activation Setup” buttons are located next to the timer list at the far left side of your screen, and displayed as **[OFF]** or **[ON]**.
2. When a timer is set up with the **[OFF]** button, the timer has been inactivated. To activate the timer, press the button, and change the status to **[ON]**.
3. To inactivate a timer, press the button, and change the status to **[OFF]**.
4. When a timer has not been configured with the Activation Time and Timer Actions, you cannot turn it on. Make sure to set up “Time” and “Action” prior to the Timer Activation.

- 4 When pressing the **[OK]** button on the “Timer List” screen, the timer will be activated.
To move back to the “Device Setup” menu screen, press the **[OK]** button.

Note. When you set up a Timer Activation, every screen will start displaying the Timer icon () within System Display Area, and the timer will be activated on the set time, and execute the registered actions.



When pressing the **[Cancel]** button on the “Timer List”, you will be directed to the Cancellation Confirmation screen.

Press **[Yes]** to move back to the “Device Setup” menu screen, and cancel the current timer setup.

- 🔊 You will hear a beep for 5 times in 5 seconds right before a timer is activated. You will also have a message window on the current screen alerting that a timer has been activated. When pressing the **[Cancel]** button on the message window, the timer will be immediately canceled, and the window will be closed. When you are using a different function (i.e.: pressing TV Remote Control buttons, or using macro functions) when a timer is about to be activated, the timer will be activated in 5 seconds after you finish the current function.

Edit Timer

Add Timer

- 1 Press **[SET]** on the “Device Home” screen shortly.
You will be directed to the “Device Setup ” menu screen.
- 2 Press **[Timer]** on the “Device Setup” menu screen.
You will be directed to the “Timer List” screen.
- 3 Press **[Add]** on the “Timer List” screen.
You will be directed to the “Add Timer” screen.
- 4 On the “Add Timer” screen,
select the **[New Timer]** or **[Macro Copy]** button.



When selecting the **[New Timer]** button;

You will be directed to the “Timer List” screen as a new timer is registered on the list.

- Note 1.** The new timer's name will be displayed as “Timer + Number”.
 2. When a timer is registered by using the **[New Timer]** button, it was not set up with the “Time” and “Actions”. Thus, you must set up those first in order to activate the timer.

When selecting the **[Macro Copy]** button;

- ① Press **[Next]** on the next screen, and then you will be directed to “Device Home” screen.
- ② On the “Device Home” screen, select and press the Device button having macro button that will be used as a Timer.
- ③ On the “Remote Control” page, select and press the Macro button that will be used as a Timer.
You will be directed to the “Timer List” screen as the new Timer is registered on the list.

Note. This new timer will be named same as the selected Macro button.

- Press the **[OK]** button on the "Timer List" screen to save the Timer. You will be directed to the Registration Information screen. Then pressing the **[OK]** button, you will be redirected to the "Device Setup" menu screen.

Note. When pressing the **[Cancel]** button on the "Timer List", you will be directed to the Cancellation Confirmation screen. Press the **[Yes]** button to cancel the timer setup, and move back to the "Device Setup" menu screen.

⚠ Caution !

Every Timer setup option requires you to press the **[OK]** button on the "Timer List" screen. Otherwise, changes will not be saved. And when pressing the **[Cancel]** button, changes will be canceled, and will not be saved.

☞ You can register maximum 64 Timers on the Timer list.

Delete Timer

- Press **[SET]** on the "Device Home" screen shortly. You will be directed to the "Device Setup" menu screen.
- Press **[Timer]** on the "Device Setup" menu screen, and then you will be directed to the "Timer List" screen.
- Select a timer from the timer list. The selected timer will be highlighted.
- Press **[Delete]** on the "Timer List" screen. You will be directed to the Timer Deletion Confirmation screen.
- Press **[Yes]** on the confirmation screen, and then you will be redirected to the "Timer List" screen as the timer is deleted.
- Press the **[OK]** button on the "Timer List" screen to save the change. You will be directed to the Registration Information screen. When pressing the **[OK]** button, you will be redirected to the "Device Setup" menu screen.

Note. When pressing the **[Cancel]** button on the "Timer List", you will be directed to the Cancellation Confirmation screen. Press the **[Yes]** button to cancel the timer setup, and move back to the "Device Setup" menu screen.



Set Up Activation Time

- 1 Press **[SET]** on the “Device Home” screen shortly.
You will be directed to the “Device Setup” menu screen.
- 2 Press **[Timer]** on the “Device Setup” menu screen.
You will be directed to the “Timer List” screen.
- 3 Select a Timer on the timer list. The selected timer will become highlighted.
- 4 Press **[Time]** at the right side of the “Timer List” screen.
You will be directed to the “Time Set” screen.
- 5 To set up the timer’s activation time, follow the instructions listed below.



Activation Time Setup

Set up a Timer to your desired time.

Note. When a timer is newly created, its time will be configured to your current local time.

■ To Set up Timer’s Activation Time

- ① Select a button from **[Year]**, **[Month]**, **[Day]**, **[Hour]**, and **[Minute]**.
The button will become highlighted, and the **[+]** and **[-]** buttons will be activated.
- ② Use the **[+]** and **[-]** buttons to set up the timer.



Repeating Timer Setup

You can set up a repeating timer that repeats itself everyday on set days.

The default timer setup is “**Non-Repeating**”.

■ Daily Repeating Timer Setup

- ① Press **[Daily]** on the “Repeat” section.
The timer will repeat itself everyday on the set time.



■ Set Day Repeating Timer Setup

- ① Press the **[Weekly]** button on the “Repeat” section.

Then, you can select the **[Day]** buttons.

Note. Your current day will be selected and highlighted as default.

- ② Select and press **[Day]** buttons.

A timer will be activated at the set time on the set days.

Note 1. To cancel a day, press the **[Day]** button one more time.

2. You can select multiple **[Day]** buttons at a time.

3. If you do not select any day, and register the timer, the timer will be automatically set as “Non-Repeating”.



Repeating Timer Inactivation Time Setup

You can set up a repeating timer to be inactivated on a certain day.

■ Inactivation Date & Time

- ① Press the “End” label on the far left bottom of your screen.

The circle located at the left side of the label will turn into red color, and allow you to select the date buttons on the right bottom side.

Note 1. The default inactivation time is the same day as the timer’s activation time.

2. If the timer is set up as “Non-Repeating”, you cannot use this option.

- ② Press a button from **[Year]**, **[Month]** and **[Day]**. The selected button will become highlighted, and the **[+]** and **[-]** buttons will be activated.

- ③ Adjust inactivation time by pressing the **[+]** and **[-]** buttons.

Note. You cannot set up a timer’s inactivation time earlier than the activation time.



- 6 Press **[OK]** on the “Time Set” screen.

You will be redirected to the “Timer List” screen as the activation time is saved.

Note. When pressing the **[Exit]** button, the timer setup will be canceled, and you will be directed to the “Timer List” screen. In case you cancel while making changes on an existing timer, the timer will be kept with the previous configuration, and you will be directed to the “Timer List” screen.



- 7 Press **[OK]** on the “Timer List” screen, and then the Registration Confirmation screen will be displayed as the timer configuration is registered.

Then press **[OK]**, and move back to the “Device Setup” menu screen.

Note. When pressing the **[Cancel]** button on the “Timer List”, you will be directed to the Cancellation Confirmation screen. Press the **[Yes]** button to cancel the timer setup, and move back to the “Device Setup” menu screen.



Timer Action Setup

- 1 Press **[SET]** on the “Device Home” screen shortly.
You will be directed to the “Device Setup” menu screen.
- 2 Press **[Timer]** on the “Device Setup” menu screen, and then you will be directed to the “Timer List” screen.
- 3 On the “Timer List” screen, select a Timer to set up its “Timer Actions”.
Then, the selected timer will be highlighted.
- 4 Press the **[Action]** button on the “Timer List” screen.
You will be directed to the timer’s “Timer Action List” screen.
- 5 Configure Timer Actions on the “Timer Action List”.



To set up Timer Actions, follow the instructions described below.

■ Add Timer Action

- ① Press **[Add]** on the “Timer Action List”. You will be directed to the “Device Home” screen.
- ② Select a device from the “Device Home” screen. You will be directed to the “Remote Control page” screen.
- ③ Select a Remote Control buttons in the “Remote Control” page.
- ④ Press **[OK]** on the “Remote Control page” screen.
- ⑤ You will be redirected to the “Timer Action List” screen, and the new timer action will be displayed at the bottom of the list.



You can set up maximum 128 actions for one timer.

■ Delete Timer Action

- ① Select a timer action from the “Timer Action List”.
- ② Press the **[Delete]** button on the “Timer Action List” screen.
- ③ The selected timer will be deleted from the list.

■ Change Timer Action Order

- ① On the “Timer Action List”, select a timer action to move its location.
- ② Use the move buttons, **[▲]** and **[▼]** to move the actions to a new location.

■ Add Timer Action Delay

- ① Press **[Delay]** on the “Timer Action List” screen.
- ② A delay command will be added at the bottom of the list, and displayed as “Delay 0.4 second”.

Note 1. The default delay time is 0.4 second.

2. To set up a “Delay” command between actions, press a target action, and press the “Delay” button. A delay command will be added right under the selected action.



■ Edit Existing Delay

- ① Select a “Delay” command on the “Timer Action List”.
- ② Press the **[+]** and **[-]** buttons to adjust the delay time.

Note. You can increase or decrease delay time by 0.1 second each time you press either one of the **[+]** or **[-]** button. And you can set up minimum 0.2 second to maximum 50.0 seconds of delay time.



■ Use Timer Jump

- ① Press **[Jump]** on the “Timer Action List” screen.
- ② Press **[Next]** on the next screen, and then you will be directed to the “Device Home” page.
- ③ Press **[Select]** on the desired page to register ‘Jump Page’ in the Timer Action List.
- ④ The ‘Page Jump’ command will be set up, and displayed at the bottom of the Timer Action List.

☞ Refer to the Macro Action Setup instructions to configure Timer Action Setup as the instructions apply the same. For more information, refer to the “Macro” and “Edit Macro Action” instructions.



- 6 After setting up the Timer Action, press the **[OK]** button on the “Timer Action List”. You will be directed to the “Timer List” screen as the action change is registered.

Note 1. When pressing the **[Exit]** button, the timer action setup will be canceled, and you will be directed to the “Timer List” screen. If you cancel while making changes on an existing timer action, the timer action will be kept with the previous configuration, and you will be directed to the “Timer List” screen.

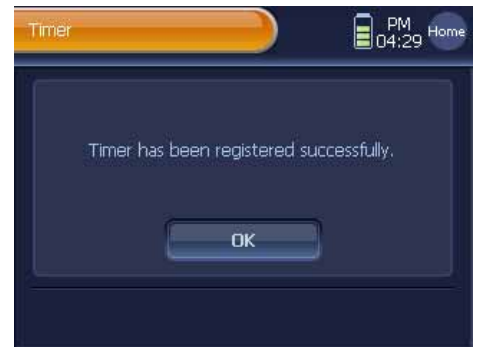
2. The **[Test]** button enables you to test the new timer action before its registration. Make sure to place **WZB 35** facing toward the target device before pressing the **[Test]** button.



- Press **[OK]** on the "Timer List" screen, and then the Registration Confirmation screen will be displayed as the timer action configuration is registered.

Press **[OK]** on the screen, and move back to the "Device Setup" menu screen.

Note. When pressing the **[Cancel]** button on the "Timer List", you will be directed to the Cancellation Confirmation screen. Press the **[Yes]** button to cancel the timer setup, and move back to the "Device Setup" menu screen.



Rename Timer

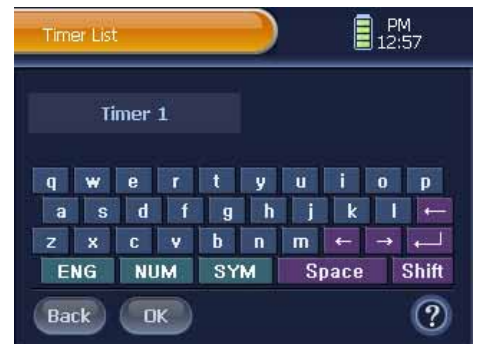
- Press **[SET]** on the "Device Home" screen shortly. You will be directed to the "Device Setup" menu screen.
- Press **[Timer]** on the "Device Setup" menu screen. You will be directed to the "Timer List" screen.
- On the "Timer List", select and press a timer to change its name. The selected timer will become highlighted.
- Press **[Rename]** on the "Timer List" screen. You will be directed to the keyboard screen.
- Use the keyboard to enter the timer's new name.
- After entering a new name, press **[OK]** on the "Keyboard" screen. You will be redirected to the "Timer List" screen that has the timer list with the new name.

Note. If you press the **[Back]** button on the "Keyboard" screen after entering a name, the name change process will be canceled, and you will be redirected to the "Timer List" screen.

- Press **[OK]** on the "Timer List" screen, and then the Registration Confirmation screen will be displayed as the timer name configuration is registered.

Press **[OK]** on the screen, and move back to the "Device Setup" menu screen.

Note. When pressing the **[Cancel]** button on the "Timer List", you will be directed to the Cancellation Confirmation screen. Press the **[Yes]** button to cancel the timer setup, and move back to the "Device Setup" menu screen.



“IR Learn” is a convenient option when:

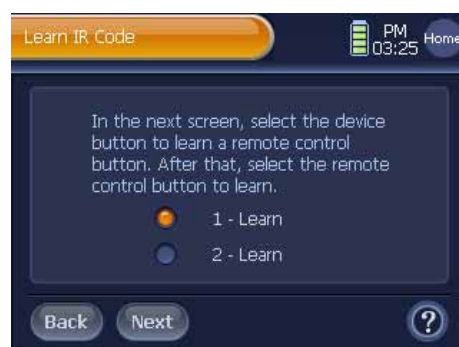
- 1) **WZB 35**'s Remote Control page does not provide a certain remote control button on the device's original remote controller.
- 2) A certain Remote Control button does not work properly even though the device has been successfully registered.
- 3) A target device does not exist in **WZB 35**'s device list.
- 4) A target device's brand does not exist in **WZB 35**'s brand list.
- 5) You cannot find a codeset from **WZB 35**'s codeset list that is compatible with a selected device.
- 6) You want to customize Remote Control button options.

1 Press **[IR Learn]** on the “Device Setup” menu screen.



2 Press **[1- Learn]** on the “Learn IR code” screen if original remote controller's button have one IR code.

Note. Press **[2- Learn]** if original remote controller's button have toggle IR code (for example, “Play/Stop” button).



3 Select and press a Device button on “Device Home” to learn its Remote Control button. You will be directed to the selected device's 1st Remote Control page.

Note 1. To move between pages, and find a device button, use the exterior **[◀ , Page , ▶]** button.

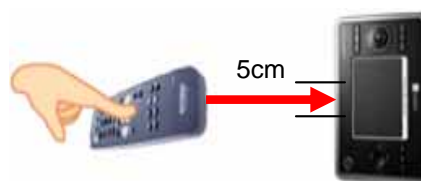
2. To exit from the “Device Home” screen, press the **[Exit]** button.



4 Place **WZB 35** and the original remote controller to face each other within 5cm distance.

⚠ Caution !

- 1) Aim the original remote controller's IR transmitter part exactly toward **WZB 35**'s center IR receiver part.
- 2) If the original remote controller is running out of battery, the button study may result in failure. Thus, make sure to check the controller's battery capacity before you try.



- 5 On the Remote Control screen, press a remote control button which will learn the original remote controller's button option.

It will load Learn Remote Control Button processing screen.

Note. You can use the exterior hard key for learning IR also.

- 6 Press the desired original remote controller's button.



- 7 When the learning process is successful, a beep sound and a success message will be activated.
To continue learning other remote control buttons, press **[Continue]**.
To finish learning buttons, press **[Close]**.

Note. If you press the **[Continue]** button, you will be redirected to step 6, so that you can repeat the Button Learning process.



If the button study is failed, a failure message will be activated.

To try to learn the button again, press **[Retry]**.

To finish learning the button, press **[Close]**.

- Note**
1. When failed, press the **[Retry]** button to go back to step 6, and restart the learning process.
 2. Main reasons of button learning failure are highly related to the cautions listed on step 5 and 7. Refer to the cautions, and try again.
 3. If you learn the IR by **[2-Learn]** method, press the desired original remote controller's 2nd button after completion of IR learning for 1st button immediately.



WZB 35 can be used to control devices using two control modes, comprising the **IR (Infrared)** and the **RF (Radio Frequency)** control mode. **WZB 35** is designed to choose between IR and RF control modes according to the situation to allow control of various devices. All devices are set up by default to work with IR signals. To be able to operate one or more devices with RF signals, you have to change the **WZB 35's** IR/RF settings for those devices.

- 1 Press **[IR/RF]** button on the “Device Setup” menu screen.

Caution ! [IR / RF] menu is not in a diffusion model.

- 2 If you would like to setting control mode with each Device button, press **[Control Device Button]**.
If you would like to setting control mode with each Remote Control button, press **[Control Remote Control Button]**.

Note . This explains ‘Control Remote Control Button’ method. ‘Control Device Button’ method is similar to the ‘Control Remote Control Button’ method, except that Relay and Serial setup are not available.

- 3 Select and press a Device button on “Device Home” for setting IR/RF its Remote Control button. You will be directed to the selected device's 1st Remote Control page.

Note 1. To move between pages, and find a device button, use the exterior **[◀, Page, ▶]** button.

2. To exit from the “Device Home” screen, press the **[Exit]** button.

- 4 Select and press a Remote Control button for setting IR/RF. You will be directed to “Remote Control Button IR/RF” setting screen.

- 5 On the “Remote Control Button IR/RF” setting screen, select a control method button.
Selected button will become highlighted, and the **[+]** and **[-]** buttons will be activated.
Use the **[+]** and **[-]** buttons to set up the control method.
After setting up the control method, press the **[Next]** button.

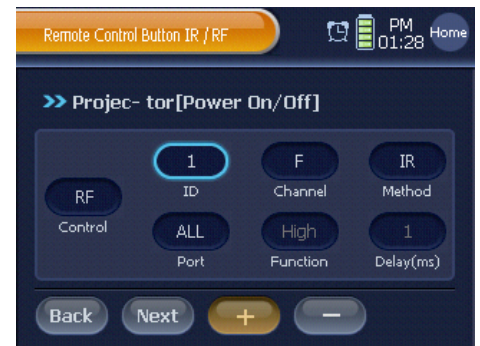


■ Instructions of Control Method Button

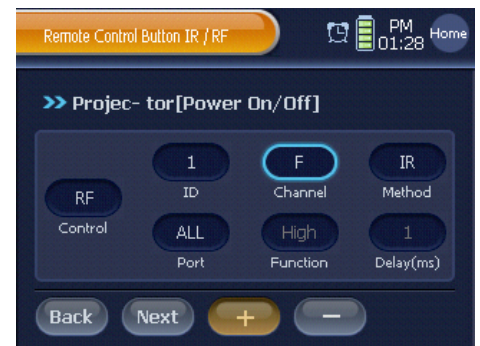
- ① **Control** : Select a control signal output method between **IR** and **RF** methods. Only RF method allows setup for the remaining setups.



- ② **ID** : Individual ID is granted for each Device or each Remote Control button in order to prevent unwanted devices to operate if there are several identical devices. There are total 16 RF IDs whose names are composed of numbers from 0 to 9, and alphabets from A to F.



- ③ **Channel** : Setup a proper channel in order to prevent frequency interception if using a product with RF control method nearby. There are total 16 RF IDs whose names are composed of numbers from 0 to 9, and alphabets from A to F. We recommend using E or F channel.

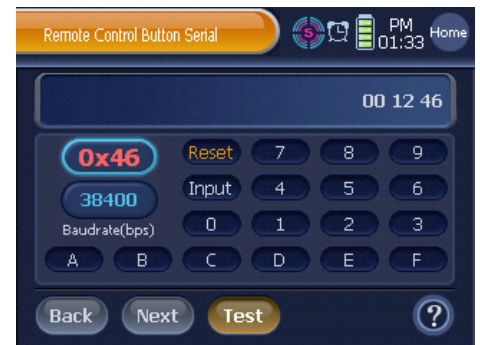


- ④ **Method** : RF receiver outputs signals in three methods: **[IR]**, **[Relay]**, and **[Serial]**.

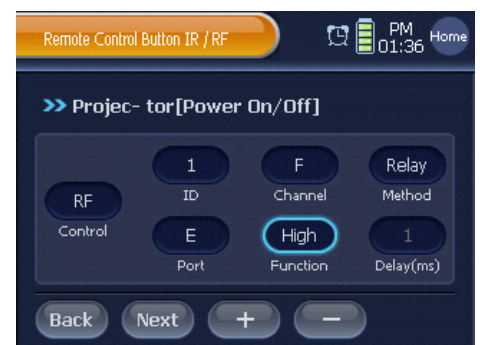
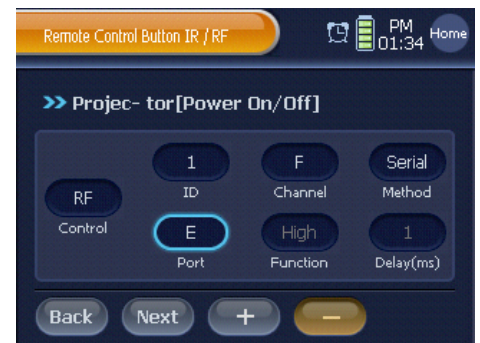
- Note** 1. RELAY and SERIAL methods control a certain device using a port of RF receiver itself through wire.
2. [IR], [Relay], and [Serial] setups need support from RF receiver for use.



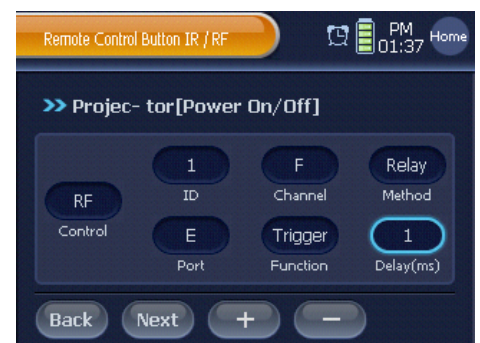
- ☞ If the Method is setup as **Serial**, a separate **Serial** setup is needed.
- If the Method is setup as Serial, press **[Next]** button then Serial setup screen for remote control button comes out.
 - Serial data can be input as byte(16 digit) unit and it is available up to 32 byte. Select a button from 0 to 9 and from A to F and the data value is indicated in red text. Press **[Input]** button to save the data in a result window.
 - Press **[Baudrate]** button to setup Baudrate in the Remote Control / Device button you wish to use.
 - Basic Serial communication setup is as follows.
Stop bit : 1bit / Data bit : 8bits / No parity / No flow control



- ⑤ **Port** : Setup an individual number for each Port of RF receiver to control the device you wish to operate.
- ⑥ **Function** : Select a method of signal output from **[Trigger]**, **[High]**, and **[Low]** only when the **[Method]** button is setup as **[Relay]**.
- ⑦ **Delay** : You can setup Trigger time only when the **[Function]** button is setup as **[Trigger]**.
You can setup the time range from 1ms to 1s (1000ms).



- 6 IR/RF setting is completed.
To continue setting IR/RF, press **[Yes]**, or press **[No]** to finish.
- Note.** Once setup, you don't need to change any functions unless a problem occurs.



How to add User Device to myDB

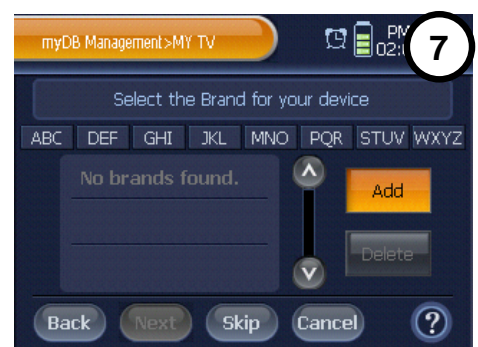
It is possible to backup the data of user-defined devices to myDB.

- 1 Press **[SET]** shortly on "Device Home".
- 2 Press **[Registration]** on the "Device Setup" menu screen.
- 3 Press **[myDB Management]** on the "Device Registration" menu screen.
- 4 Press **[Add]** on the "Device Selection" screen.
- 5 Use the key-board to enter a new name for the user device and press **[OK]**.
You will be redirected to the "Device Selection" screen.

Note. You can register maximum 100 device data on myDB.

- 6 Select the **New Device** from the device list, and press **[Next]**.

- 7 Press **[Add]** on the "Brand Selection" screen.



- 8 Use the key-board to enter a new brand name and press **[OK]**.
You will be redirected to the “Brand Selection” screen.

- 9 Select the **New Brand** from the brand list, and press **[Next]**.

- 10 Press **[Add]** on the “Model Selection” screen.

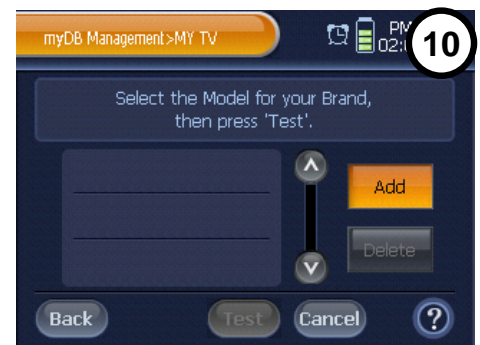
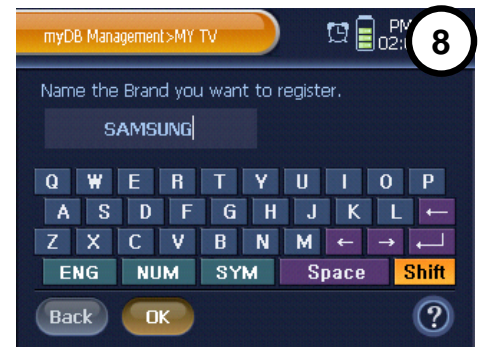
- 11 Use the key-board to enter a new model name and press **[OK]**.

- 12 Press **[Next]** on the next screen, and then you will be directed to “Device Home”.

- 13 Select and press a **Device** button to register on myDB with new name. You will be directed to the confirmation page.

- 14 Press **[Yes]**, and then a new user device will be added to myDB.

Note. If you press the **[No]** button, you will be redirected to the “Device Home”, so that you can select a device button again.



How to add Device from myDB

You can register remote control options on "Device Home" using data of user-defined devices from myDB.

- 1 Press **[Registration]** on the "Device Setup" menu screen.

- 2 Press **[myDB Management]** on the "Device Registration" menu screen.

- 3 Select a **"Device"** from the device list, and press **[Next]**.

Note 1. If you press **[Skip]**, you can jump to the 'model list' screen, then will see all the model registered in myDB.

2. If you press **[Delete]**, selected device will be removed from myDB.

- 4 Select a **"Brand"** from the brand list, and press **[Next]**.

Note 1. When you want to find a brand, please press alphabet button. Then you will see all the brand beginning with the selected character.

2. If you press **[Skip]**, you can jump to the 'model list' screen, then will see all the model registered in myDB.

3. If you press **[Delete]**, selected brand will be removed from myDB.

- 5 Select a **"Model"** from the model list, and press **[Test]**.

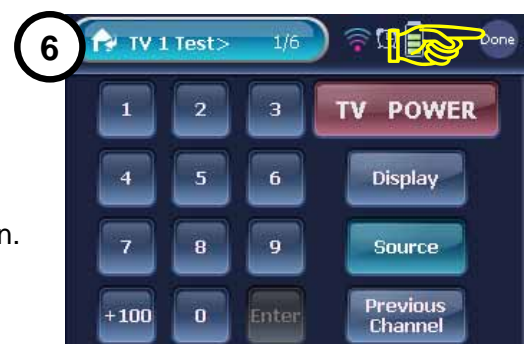
You will be directed to the remote control page of the selected device.

Note. If you press **[Delete]**, selected model will be removed from myDB.

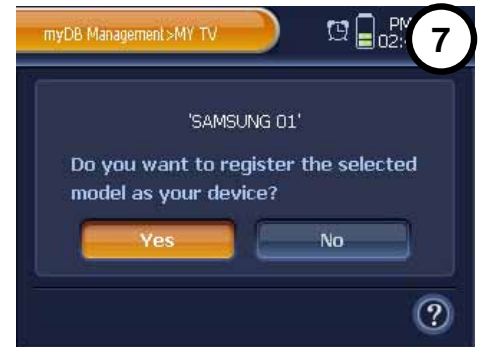
- 6 Press a remote control button to test.

To finish testing, press **[Done]**.

You will be directed to the Device Registration Confirmation screen.



7 On the Device Registration Confirmation screen, press **[Yes]**.

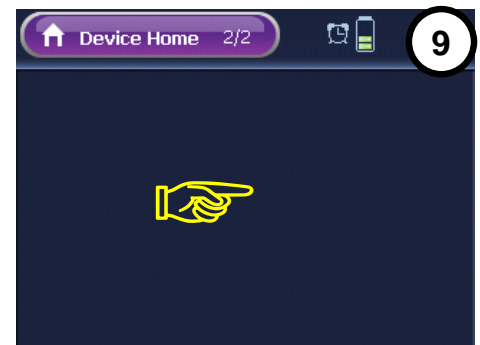


8 Press **[Next]** on the next screen, and then you will be directed to "Device Home".



9 Select and press a new location to add the device button.

Note. When you select an incorrect or unavailable location, you will hear a beep sound alerting that the location unavailability.



10 The device button will be registered.






☞ You can share the data saved in MyDB with a PC or other **WZB 35** using USB port of the PC.
Refer to 'PC Management Guide' for more detailed information.

62 Setup Protection Mode

User can setup the device in 'General mode'. 'Protection mode' locks the setup function in order to prevent re-setup by another user.

How To Setup Protection Mode

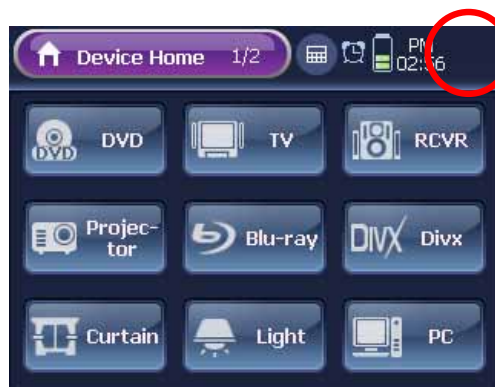
- ① Reboot power. (Switch the power button located in the back side of terminal off and on again).
- ② Press exterior hard button  and  at the same time after you switch on the power.
 **Caution !** You must press the button before LCD screen is turned on.
- ③ Release the pressed button when you hear a beep sound.
- ④ 'General mode' is converted to 'Protection mode' as system loading is completed or vice versa.



In 'Setup Protection Mode', [Set] button is not indicated in order to prevent setting up by a user.



'General mode'



'Setup Protection Mode'

Basic System

Cannot turn on WZB 35.

- ① See if you have turned on **WZB 35**'s power switch.
The switch must be at the "I" side to be on.
- ② When the battery is fully discharged, you cannot turn on **WZB 35**. Please charge **WZB 35**'s battery.
- ③ When you still cannot turn on **WZB 35** even if you charge the battery, turn off **WZB 35**'s power switch, and leave it off for approximately 5 minutes. Then, connect the DC adapter directly to **WZB 35**, and try to turn on the power again.

WZB 35 automatically turns off.

WZB 35 is configured with automatic energy saving mode, so it automatically turns off itself when it is not being used for a while. To reactivate **WZB 35**, press the touch screen or an exterior button, or gently lift it up. Then, it will be turned on again. You can also configure the energy saving mode setup for your convenience.

LCD screen is too dark to see anything.

WZB 35's LCD touch screen's brightness can be adjusted to 5 different levels. Use the "Brightness Adjustment" option in **WZB 35**'s System Setup menu to adjust the brightness for your convenience.

Clock shows incorrect time.

WZB 35's clock can be easily configured by using the "Date & Time" option. Especially the timer options are based on the clock time, so please make sure to set up the clock with your correct local time.

I can't use the on-touch buttons on the touch screen.

When pressing an on-touch button, it will display an animation of the button being pressed. If you cannot see any change on the button even when pressing it, it is highly possible that the button function has been disabled. Disabled buttons are shown in a different image from the

normal buttons, and they cannot be pressed. Another possibility is that the coordinates setup for the touch screen and the button may have been incorrectly configured. If this is the case, we encourage you to reconfigure the touchpoint setup.

How can I delete all the data saved in WZB 35, and initialize the system?

You can use the "Factory Default" option in the System Setup menu to initialize **WZB 35** system. Please remember, when the system is initialized, the previous data saved in the system cannot be restored. Thus, we encourage you to use this option only when it is necessary.

The [SET] button doesn't open the "Setup" screen.

When pressing the [SET] button on "Device Home", you will be directed to "Device Setup" menu. At this point, the [SET] button can only be activated when it is pressed at least 0.5 second, and this is to prevent the button from unnecessarily opening the setup mode whenever it is touched.

The [Home] button doesn't allow me to exit from the setup screen.

Just like the [SET] button function explained above, the [Home] button also must be pressed at least for 0.5 second to be activated.

I can't find a button to open the Calculator.

You can open the Calculator screen by pressing the "Calculator" icon button within System Display Area on "Device Home". Remember, the "Calculator" button only appears on "Device Home". Thus, you cannot use the Calculator in any other mode such as Remote Control mode.

Will I be losing all the data saved in WZB 35 if I let the battery completely discharged?

No, even if the battery is completely discharged, your data in **WZB 35** will be safely kept. However, if you leave the battery without charging it for longer than 15 days, the clock may stop working; make sure to readjust the time when you restart using **WZB 35**.

Can I charge the battery any time I want?

You can charge the battery any time, and it will not affect the battery's durability. However, charging the battery when it is about to run out may cause you inconvenience in remote controlling devices; therefore, we encourage you to frequently charge the battery regardless of its remaining capacity.

Can I use WZB 35 even while charging the battery?

You will not experience any problem to use **WZB 35** even when the battery is being charged. For your convenience, we suggest you to use the DC adapter by directly connecting it to **WZB 35**, and charging the battery.

Device Registration

I can't find my device from the device list.

Although **WZB 35** enables you to register total 22 different kinds of device, you may not find a target device from the device list. In this case, you can select a similar kind instead. For instance, you can select "AV Receiver" instead of "Audio", or "TV" instead of "Web TV". If you cannot even find a similar kind of your target device, we encourage you to use the "Basic Device Registration" menu.

I can't find my device's brand from the brand list.

Although **WZB 35** is equipped with a wide selection of codeset data, and we are continuously updating the codeset data, you may not find your device brand from the brand list. If this happens, please refer to the page 23, "Exceptional Situation 2".

I have successfully registered a device on WZB 35, but the device's Remote Control page doesn't show a Remote Control button which exists on the device's original remote controller.

Even if you have successfully registered a device on **WZB 35**, the device's Remote Control page may not seem to provide you every option included with the original remote controller. It is because **WZB 35's** device remote control page is composed of various Remote Control buttons that are highly optimized, to almost every brand's remote controller functions; thus, the Remote Control buttons may look different from your original remote controller. If you have a missing Remote Control button, you can use the "IR Learn" option which enables you to copy the original remote controller's function to a Remote Control button.

The "IR Learn" option doesn't work.

When you fail to copy a remote controller's function to **WZB 35's** Remote Control button, please check the possible causes listed below.

- ① If a device's original remote controller is running out of battery, the "IR Learn" option may not work properly; Make sure to check the original remote controller's battery capacity.
 - ② Before you activate the "IR Learn" option, make sure to keep less than 5cm distance between the original remote controller and **WZB 35**.
 - ③ Aim the original remote controller's IR transmitter part exactly toward **WZB 35's** center IR receiver part.
 - ④ Press the original controller's button until you hear a beep alerting that the Button Learning has been successfully complete.
 - ⑤ Press the button a little bit hard, so that the button will be pressured with enough strength. Otherwise, you may fail to copy the button option to **WZB 35**.
-

Functions

I can't control my devices with WZB 35's

Remote Control buttons.

If you experience a problem in remotely controlling a device by using **WZB 35**, please check the followings;

- ① See if you have correctly selected a target device on "Device Home".
- ② Make sure to aim **WZB 35**'s IR transmitter toward the target device.
- ③ Check the battery's remaining capacity. If the battery is ran out, **WZB 35** may not be able to transmit IR signals to the device.
- ④ Test the device with different Remote Control buttons. If some or even the entire buttons do not respond, we encourage you to delete the device registration, and reregister the device.
- ⑤ When reregistering the device, please test its codesets and buttons as many as you can before the actual registration.

I don't have Channel and Volume buttons on my device's Remote Control page.

Some Remote Control options use **WZB 35**'s exterior buttons such as "CH +/-", "VOL +/-", "Mute", "Cursor Control", "Menu", and "Exit". These buttons perform exactly the same as on-touch Remote Control buttons in Remote Control mode.

Macro options don't work.

If you experience a problem in using macro options, please check the followings;

- ① Make sure to aim **WZB 35**'s IR transmitter toward the selected device. Considering that you are using macro options to control multiple devices at the same time, all the target devices should be placed within **WZB 35**'s IR signal area which is quite wide: 100° from left to right, and 80° from top to bottom.
- ② Check the battery's remaining capacity. If the battery is ran out, **WZB 35** may not be able to transmit IR signals to the device.

- ③ Check the target device's status. For instance, if **WZB 35** is about to turn on the device, but the device already has been turned on, it may cause a malfunction of **WZB 35**, and **WZB 35** might turn off the device as the result.
- ④ When you command macro actions to one device, check "Delay" of the actions.
- ⑤ Open the "Edit Macro Action" menu, test the macro button, and reconfigure the macro action that does not work properly.

A timer doesn't work.

If you experience a problem in activating a timer, please check the followings;

- ① Aim **WZB 35**'s IR transmitter toward a device which will be activated by the timer. If the timer is configured to control multiple devices at the same time, all the all the target devices should be placed within **WZB 35**'s IR signal area which is quite wide: 100° from left to right, and 80° from top to bottom. Since the timer is going to control the devices instead of you hand-holding **WZB 35** and controlling them, you have to place **WZB 35** in a place where it can control the devices without causing a malfunction.
- ② Check the battery's remaining capacity. If the battery is ran out, **WZB 35** may not be able to transmit IR signals to the device.
- ③ Check the target device's status. For instance, if **WZB 35** is about to turn on the device, but the device already has been turned on, it may cause a malfunction of **WZB 35**, and **WZB 35** might turn off the device as the result.
- ④ If the timer is configured to command multiple actions to one device, check "Delay" of the actions.
- ⑤ If the timer was not activated at the set time, check **WZB 35**'s clock, and see if the clock indicates the correct time. Make sure that the timer's activation time is affected by the clock. For next, please check the timer's registered activation time.
- ⑥ If the timer's action does not work properly, test the action on the "Timer Action List", and reconfigure the action.

Safety Precautions

- Do NOT use **WZB 35** with a Non- **WZB 35** branded DC adapter.
- Keep **WZB 35** stably positioned at all times, or the unit, especially the LCD screen, may be seriously damaged..
- Always keep **WZB 35** away from heavy moisture.
- Always keep **WZB 35** from being exposed to magnetic fields.
- Always keep **WZB 35** from all kinds of heat sources.
- Do NOT attempt to repair the product yourself or remove the casing.
Any hardware modified product is subject to exclusion from free repair services.
- Keep **WZB 35** and the battery charger's charging terminal away from dust and other substances at all time.
- Use Stylus or finger to touch **WZB 35**'s LCD screen.
Other objects may cause scratches or damage to the LCD screen..
- Never use liquid or aerosol detergent to clean **WZB 35**, or its LCD screen.
- Use a soft cloth to wipe **WZB 35**.

Certification and Verification – CE R&TTE FCC FCCID RoHS



WZB 35 Software Update

Vity Technology frequently provides you all kinds of **WZB 35** related software, so that you can enjoy more options with your **WZB 35**. To download and update **WZB 35** software, you must install the Active Sync program, and have a USB driver. For your convenience, **WZB 35** product kit is included with a USB driver and the Active Sync program inside the product CD. You can also download the Active Sync program from the “Update” section on our official website. For more information regarding the software update, please visit our website at [www. vity.com](http://www.vity.com) and check the “Online Update” menu.

FCC Information

This device complies with Part 15 of the FCC Rules. Operation is subject to the following two conditions :

- (1) This Device may not cause harmful interface, and
- (2) This Device must accept any interference received, including interference that may cause undesired operation.

Note : This equipment has been tested and found to comply with the limits for CLASS B digital device, pursuant to Part 15 FCC Rules. These limits are designed to provide reasonable protection against harmful interference when the equipment is operated in a commercial environment. This equipment generates, uses and can radiate radio frequency energy and, if not installed and used in accordance with the instructions, may cause harmful interference to radio communications. However, there is no guarantee that interference will not occur in a particular installation. If this equipment does cause harmful interference to radio or television reception, which can be determined by turning the equipment off and on, the user is encouraged to try correct the interference by one or more of the following measures ;

- 1.1. Reorient or relocate the receiving antenna.
- 1.2. Increase the separation between the equipment and receiver.
- 1.3. Connect the equipment into an outlet on a circuit different from that to which receiver is connected.
- 1.4. Consult the dealer or experienced radio/TV technician for help.

WARNING

Changes or modifications not expressly approved by the manufacturer could void the user's authority to operate the equipment.

“CAUTION : Exposure to Radio Frequency Radiation.

Antenna shall be mounted in such a manner to minimize the potential for human contact during normal operation. The antenna should not be contacted during operation to avoid the possibility of exceeding the FCC radio frequency exposure limit. The minimum separation distance of 20cm from the antenna to the body of user required.”

Display

- . Touch screen
- . 3.5 inches Color TFT LCD
- . 65,000 colors
- . 320 X 240 pixels
- . High Brightness Backlight

CPU

- . 32bit RISC
- . 206MHz ARM9 Processor

Memory

- . 64MB NAND Flash
- . 64MB SDRAM

OS

- . Windows CE.NET 4.2

IR Capabilities

- . Operating Distance : 45M(max)
- . Horizontal Range: ± 50 degrees
- . Vertical Range: ± 40 degrees
- . IR Transmitter and Receiver
- . Learning IR codes
- . Universal IR code Database

Radio Frequency (RF)

- . Frequency : 2.4GHz
- . Operating Distance: Max120M
(2dB external antenna)
- . Addressable 16 Extender ID
- . Addressable 16 Channel

Battery

- . 4.2V/1,600mA Thin Lithium-polymer

DC Power

- . 12V/1.5A SMPS DC Adaptor

USB

- . USB 1.1 Interface

Status LED

- . Operating and Battery Status
- . High Brightness
- . Color : Blue, Red, Green

Sound

- . Magnetic Buzzer

Pick up Sensor

- . Screen wake up
- . Operating Angle : Up/Down 15°

Dimensions

- . WxDxH(mm) : 160 x 99 x 17.0/22.8
- . Weight(g) : 240

Convenience

- . System Macro Function
- . Macro Link Function
- . Timer Function
- . Clock/Date Display
- . RTC Back up Battery built in
- . Hard Button : 19 ea
- . Automatic Power Off
- . Online Update

Accessories

- . Chargeable Cradle
 - . RF Receiver (Options)
 - External Antenna 2dB
 - Addressable 4 IR port
 - 1 IR link Port
 - 1 RS232 (Tx)
 - . Dual Blink IR Emitter Cable
 - . DC Adaptor
 - . USB Cable
 - . Stylus Pen
-