

# **User's manual**

## **Federal Communications Commission (FCC) Statement**

You are cautioned that changes or modifications not expressly approved by the part responsible for compliance could void the use's authority to operate the equipment

## **FCC- Class B**

This equipment has been tested and found to comply with the limits for a Class B digital device, pursuant to part 15 of the FCC Rules. These limits are designed to provide reasonable protection against harmful interference in a communications. However, there is no guarantee that interference will not occur in particular installation. If this equipment does cause harmful interference to radio or television reception, which can be determined by turning the equipment off and on, the user is encouraged to try to correct the interference by one or more of the following measures:

- Reorient or relocate the receiving antenna.
- Increase the separation between the equipment and receiver.
- Connect the equipment into an outlet on a circuit different from that to which the receiver is connected.
- Consult the dealer or an experienced radio/TV technician for help.

## **FULL COLOR DISPLAY**

This machine is a new generation digital Walkman, which support MP3, WMA, WMV, WAV format. It has perfect sound effect, extreme stability and smart feature, which make it be the handicraft of master level. And we sincerely hope that it can bring you wonderful comfort.

## **Introduction**

**Smart feature design, Smart feature, good for handling**

**Support various voice frequency formats  
MP3, WMA, WMV, WAV, AMV**

**Firmware upgrade**

**Afford downloading process on the website, by which you can expand the player's function.**

### **FM radio**

The powerful researching function can help you enjoy at most 20 different programs.

### **E-book**

The word-noting function can help you copy the text into the disc and read it whenever you want

### **USB disc (driving free) function**

You can operate in a PC directly with no driving (WIN2000 or more advanced systems no driving)

### **Replay**

You can record voice with its built-in microphone and store it in certain format (WMA ), moreover, you can set the section to be repeated.

### **7 EQ modes**

Normal, rock, pop, classic, soft, jazz, DBB

### **Playing modes**

Normal, repeat, repeat folder, repeat all, random playing, skimming

### **Power off time set**

You can enjoy the two convenient modes: sleeping mode and power saving mode

### **All flash menu**

Stereo flash menu and relevant word display gives you perfect enjoyment.

## **Acclamation**

First, thank you for using our product.

Before you operate the machine, please read the manual carefully.

**Switch ON when you charge the battery**

Notice: the information of this manual is depending on the present edition of the product, and we have no responsibility to inform you the future improvement of the product.

## Know about the player

### Feature and keys



### Screen



**About battery:** it adapts standard polymer battery, the voltage is 3.7V and can be used for more than 1000 times.

**Important:** when playing the music file, its outside speaker will start working. When its power is 3.6V-3.7V (above 3.7V is normal), the playing system will turn off the outside speaker automatically, and will give out the following notice:

**you need click MODE to go back to the music playing interface from this condition, then you only need to plug in the earphone to let the player go on playing music, or the player will announce you again:**



If need, you should charge the player at working condition, or it is not workable



If when you cut off the power supply when charging the player, but it is still in USB mode, it is also normal, and you only need to recede from USB mode and disconnect the PC connection to let it working normally.



Please turn of the player when do not need to use it

## **Basic function**

### **Enter the menu**

You can enter the menu by clicking “mode”. The menu can be divided into main menu, playing son menu (shortly press to enter) and stopping son menu (shortly press to enter).

### **Skimming operation**

Choose skimming menu

Go forward or upward when playing

### **Enter different modes**

You can enter different function from the main menu

Main menu: (long time press “mode” to enter it)

<b>Music</b> ↵	<b>Movie</b> ↵	<b>Record</b> ↵
<b>Voice</b> ↵	<b>Fm mode</b> ↵	<b>View picture</b> ↵
<b>Sys set</b> ↵	<b>Ebook</b> ↵	<b>Game</b> ↵



### Volume Control

press “PRE” button to decrease volume.  
press “Next” button to increase volume.

- **Turn On/Off**

Long press “Play”

Note: turn on/off the power

- **Play& Stop (Pause when recording)**

Press “Play”

You may press *Play* button to fast exit from any menu or option interfaces.

### Keys Operation

1. Star/Play/Pause/Stop, press “Play” button.
2. “NO/OFF”: take on or take off the power of mp3 player.
3. “Mode” enters in the main menu or submenu.
4. Next: to the next
5. Pre: the previous
6. “VOL+” : increase volume
7. “VOL-” : decrease volume

8. "USB": USB plug
9. PHONE JACK: standard earphone jack.

### Definition of the key operation action

The key operation contains shortly press, long timely press, press and hold and single press. The following are all shortly press, except for specially noted.

**Shortly press:** press the keyboard once, and it will be effective immediately.

**Long timely press:** press and hold for 1-2 seconds, and can be used only once.

**Single press:** press the key, and it will be effective soon.

**Press and hold:** during the time you press and hold the key, it will work all the time. E.g.: "quick forward" and "quick back".

### Music playing

1. Inset the earphone into the hole
2. Long timely press "play" to power on, enter "music mode", and then shortly press "play" to play music.

#### 3. Choosing music:

"Prev": choose the previous item of music

"Next": choose the next item of music

#### 4. To adjust the volume

press "PRE" button to decrease volume.

press "Next" button to increase volume.

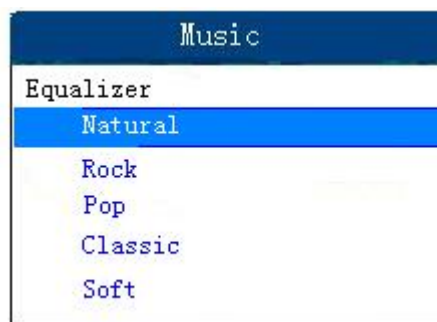
### EQ mode

1. Music is being played



2. Shortly press "mode" to enter playing son menu.

3. Turn "next" to choose "EQ mode"
4. Shortly press "mode" to enter "EQ"



EQ choosing:

5. Various EQ modes:

Natural
Rock
Pop
Classical
Soft
Jazz
DBB

6. Turn "next" to select; shortly press "mode" to confirm.

### Lyric display

The player support "\*LRC" text, which can help achieving the function  
How to use "\*LRC" text"

Keep the Lyric name consistent with the music.

E.g.:

**Name of the music:** say you say me.mp3

**Name of the Lyric:** say you say me.lrc

How to know whether there is lyric display

If the present song has Lyric display, the music mode "●" will become "●".



1. Check whether it has Lyric display
2. Long timely press "mode" to enter the condition
3. Lyrics displays
4. Shortly press "mode" to go back to music mode

## Play AMV format file

Please refer the steps of playing music to play AMV format music. Only following keys are valid keys when playing AMV music.

**PLAY** : Stop. Press and hold to switch of the player.

**MODE** : Press and hold to entry the main menu.

**PRE//NEXT** : Previous/NEXT/VOL+ music.

## Voice recording

Please make sure the power is enough when recording  
The machine support storing 99 texts under each catalog

Record in the "voice recording" mode

1. Enter the main menu:



2. Turn "next" to choose "voice recording" mode
2. Shortly press "mode" to enter the voice-recording mode. See the





following picture:

3. Shortly press "play" to start recording
4. Other operations are the same as "hot recording", you just need to s "play".

! The recorded voice is stored in the present catalog in "stopping son menu / main menu".

! If the screen displays "no space", it means there is no place for storing recording text, and you should delete some text to release space.

! If the screens displays "catalog is full", it means there is already 99 recording texts, please change a new one.

! Only the key "mode" is effective when recording.

#### Select recording type

1. Under voice recording condition
2. Shortly press "mode" to enter recording son menu
3. Turn "next" to choose "REC type" son menu; shortly press "mode" to enter this item:

Fine REC	WAV format, good sound quality
Long REC	ordinary sound quality
Fine VOR	WAV format, (sound control recording, and it will pause when no sound)
Long VOR	sound control recording, and it will pause when no sound

4. Shortly press "next" to choose appreciate recording type, and then shortly press "mode" to confirm it.
5. Press "play" to start recording

## Play recording file

1. Enter the main menu
2. Turn "next" to choose "voice" mode

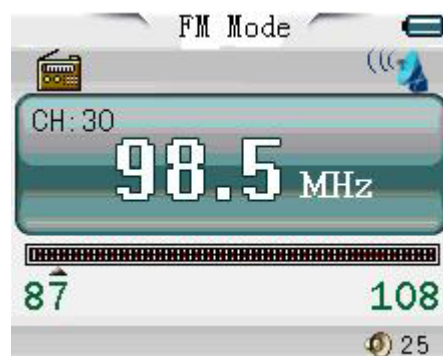



3. Shortly press "mode" to enter "voice" playing interface
4. Press "play" again to start playing
5. Choose recording text
  - "Pre": choose the previous recording text
  - "Next": choose the next recording text
6. Volume Control
  - press "PRE" button to decrease volume.
  - press "Next" button to increase volume


## Use FM radio

The mode you first enter is "playing" mode, then you need recover the program that stored previously, and the frequency is the minimum value

### About its interface



- The frequency value changes according to the marks position changing
-  : frequency showing mark

-  : Present program, at most 20
- **105.9 MHz** : Present frequency

## Research and listen the FM program

1. Enter the main menu
2. Mode "next" to choose FM mode
3. Shortly press "mode" to enter FM mode
4. Automatically researching  
Press "Pre" / "next" for two seconds, the player searching forward or downward in 100KHz, and stops at the station searched;
5. Micro adjustment  
Turn "Pre": turn a single step (100KHz) backward  
Turn "next": turn a single step (100KHz) forward
6. Save the stations searched  
Shortly press "mode" to enter son menu  
  
Save press "mode" again to store it
7. Choose the stored station to listen  
If there is at least 1 station stored, you can shortly press "play" to listen it in sequence

You can save the program you like. Inside recording function click "mode" to operate it.

- **Control:** press "PRE" button to decrease volume.  
press "Next" button to increase volume

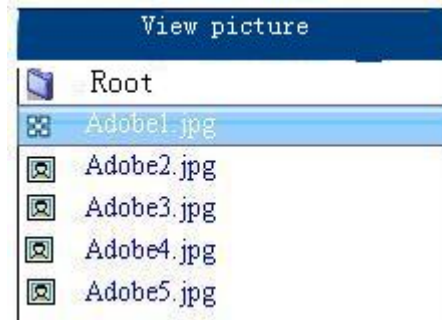


: "Normal frequency" and "Japanese frequency" can store at most 20 stations each.

- JPEG skimming  
You can achieve photo skimming

## File selecting condition

When enter it from the main menu, it will be:



**JPEG interface –file selecting-selecting file  
It will be blank when no file**

**press "play" to enter JPEG skimming condition**

**Press "Next/ Pre" to choose the next of previous item**

**Press "mode" to enter "stopping so menu": 1. catalog choosing, 2, playing set . 3 file deleting. 4 Exit**

**Playing condition: 1. Manual ; 2 auto**

**Auto turning time is 1-8 seconds**

**Photo skimming**

**the interface is :**



**Press :next / Last to choose**

**Press "play to go back**

**Press "Mode" to turn back to the main menu**

## **Game**

**Enter main menu, press "Next" button to enter game mode, and short-press "Mode" to enter sub-menu. Enter main menu , toggle Next key to choose game mode , short press "Mode" key to enter the next menu :**

### **1. TRIC Russia Diamonds**

Press "NEXT" or "PRE" to select "Russian Square".

"Speed Set" : To set the speed of the game, total 5 modes. "1" is the slowest, as the Arabic number increase, the speed increase.

Game interface:

Button definition :

"PRE/Next" : Left/Right.

"VOL+" : Speed increase button

"PLAY" : Change the shape

Long-press "Mode" to exit the game.

Explanation:

Score: 10 per layer of square, scoring method : Each eliminate a flat diamonds,get 10 mark,and cumulation.

Game over: when have no blank between diamonds and top,will register: game over !

### 3 ) Push Box

Press NEXT or PRE key to choose"Push Box "game.

Continue game:enter in the rough game interface of last time .

New game: enter original game interface,start a new game.

Select map: select map type that you wil push box.

Small person of push box is master in the picture :

Press PRE/Next up/down

Press vol+/vol- left/right

Lasting press Mode key exit game

The purpose of game is to push all boxes to the target position.Box can push but can't pull to move. push a box one time.Its rule is simple, but for the toll-gate of different difficulty, the intelligence needed is different, some toll-gates may cost you a few hours and even several days .

Circumstance of winning:All push the boxes to a little bit red top,then you win this game .

### 4 ) Edacity Snake

Press NEXT or PRE key choose "edacity snake "game.

Continue game:enter in the rough game interface of last time .

New game: enter original game interface,start a new game.

Speed enactment: intercalate speed fast or slow.

Yellow and move in the picture is ——edacity sanke.

Press PRE/Next up/down

Press vol+/vol- left/right





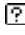

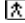
Use "up" "down" "left" "right" to control snake's direction,make it to eat diamonds,eat more ,more mark.

## System setting

How to enter it

1. Enter the main menu
2. Turn "next" to choose "system setting"
3. Shortly press "mode" to enter "system setting"

## Introduction of each item of appendix

 Recording time	Set the recorded date and time when the recording text recorded
Language choose	Set different languages
 Power off set	Set a time of counting back, and once reached the time it will power off automatically
 Online mode	The item of "different space" function
 Memory info	Check the storage space
 Firmware version	Display the player's Firmware edition
 Firmware upgrade	Specially for Firmware upgrading
 Exit	Exit the present interface

## Detailed operation instruction

"Recording time" setting

1. System setting interface
2. Shortly press "mode" to enter recording interface

Recording time:



1. Press VOL+, setting from years. While setting, year on twinkling.
2. Push NEXT the value will increase (Pre - on opposite)
3. After setting, press Mode to exit.

"Language choose" setting

"Power off" setting

"Power saving" mode: you set a time (unit: second), at the stopping condition, once it reaches the time, it will power off automatically. "0" means the function stopped.

"Sleeping mode": you set a time (unit: second), once it reaches the time, it will power off automatically no matter what condition it at, and this function is specially for sleeping. Notice: the sleeping mode can only be effective for one time, and it will clean out the time set before after power off. If you need it, you should set again.

"Replay setting"

"manual" mode: it can't divide the sentence automatically but by hands when repeating.

"Auto mode": it automatically divides the sentence when repeating (specially for English reading when music is not on).

"online mode"

operation method refers to "EQ mode" setting.

Some operating system (before Windows 2K AP4) can't support one USB disc has two disc marks, so after it used "different space" function, you need to choose which disc you presently want (single normal disc or single encoded disc), so as to be displayed after connected to the computer.

### “Memory info”

The figure presents the total volume of the disc, the percentage present the percentage between used space and total space.

### “Firmware edition”

You can find out the present edition of the player

### “Firmware upgrade”

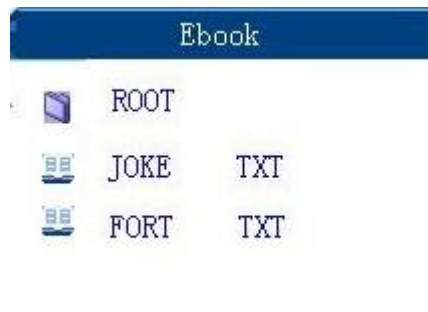
Used for the upgrading Firmware



**Skill notice:** after set the item by press “mode”, you can press the key “play” to exit. It is effective to all menus when pressing “play”.

## E -BOOK

enter the main menu , press “NEXT”, and press “mode” to enter the next



catalog choosing: choosing the root catalog

Press mode to enter the “catalog choosing” interface, press “NEXT/PRE” to turn page, and shortly press “mode” to confirm

“choosing file”: by “ NEXT/PRE”





Choose file name and press “mode”

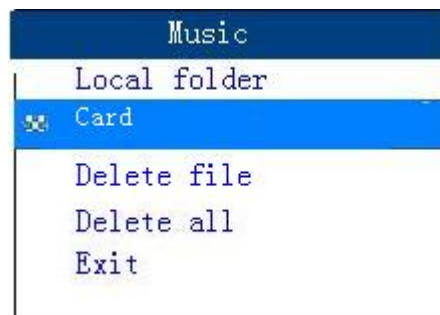
press “next” to choose “text reading” press “mode” to confirm, then you can choose your text

Press “NEXT/PRE” to turn page

## Micro SD support and instructions

### 1. Support Micro SD

**Usage: Music, Movie, View picture, E book .Select card on the sub-menu, press “M” to see and use the related files in**



**Micro SD**

### **USB disk using**

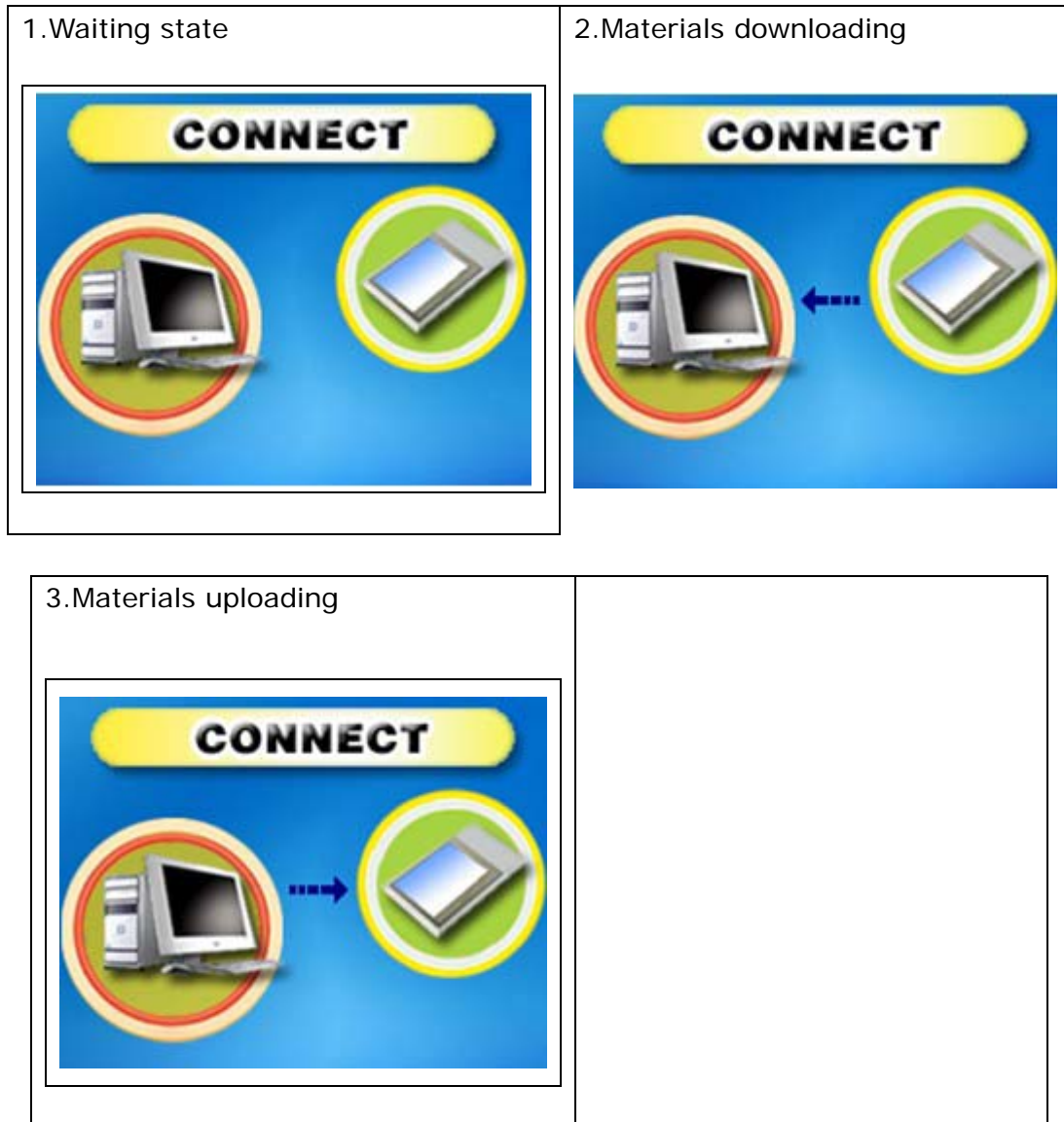
The player is the standard USB disk function that supports Windows 98 (Need install the drive procedure), above Windows 2K (Needn't install the drive procedure) system, Mac OS 10.3 or above, Linux Redhat 8.0 or above

The player supports the USB to supply power that can play when there is battery. Press MODE to exit the main menu in the state of waiting and choose the working mode to enter

The player supports the Suspend model

The player has three showing modes after connecting PC:

1



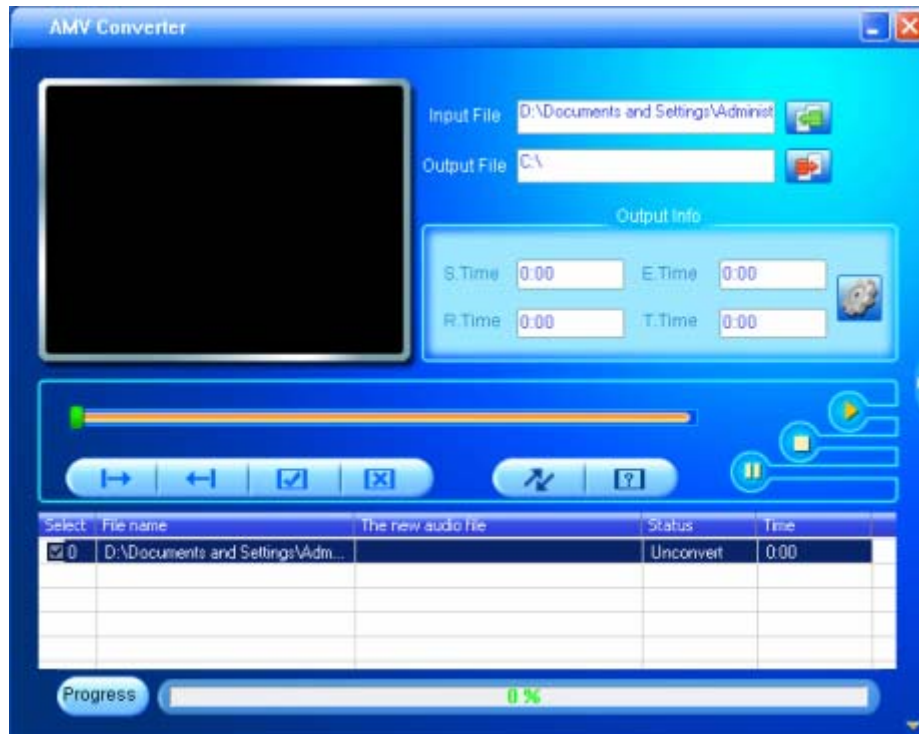
## AMV Convert Tool



Conversion as AMV through a random supplementary install procedure tool package.

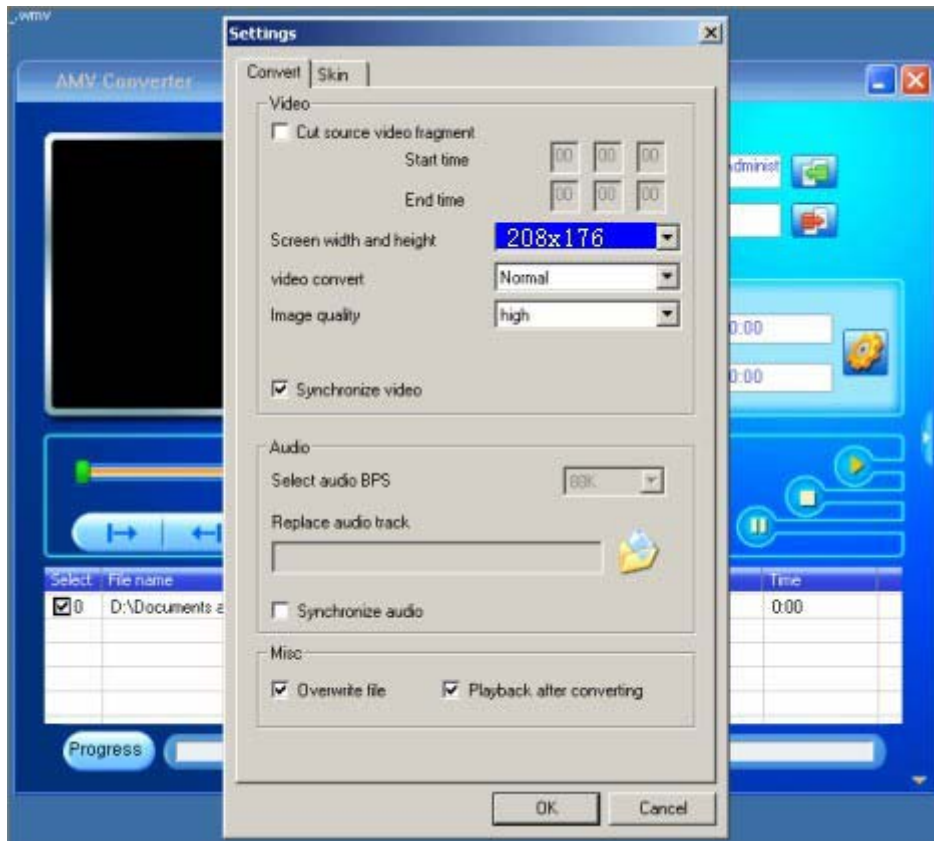
1 .Circulate random supplementary install procedure package "AMV

Convert Tool",click"  " key to select needing inborn document

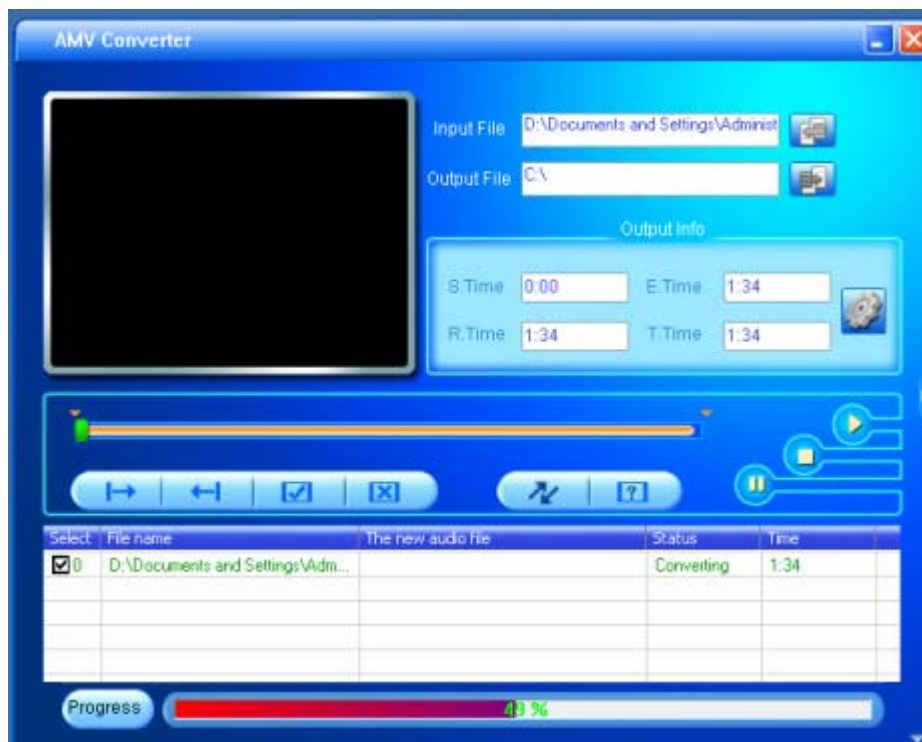
route, then click "" key to select needing input document route.



2 . Select unsettled AMV video document, click "" key, icon color turn blue"  "at this time ,and pop up document frame, then select AMV document video length width is "208\*176" and AMV document play frame second "middle", the last click "confirm" intercalate to finish. (note: this machine just support "208\*176" picture.



3 . Click "  " button to start conversion.



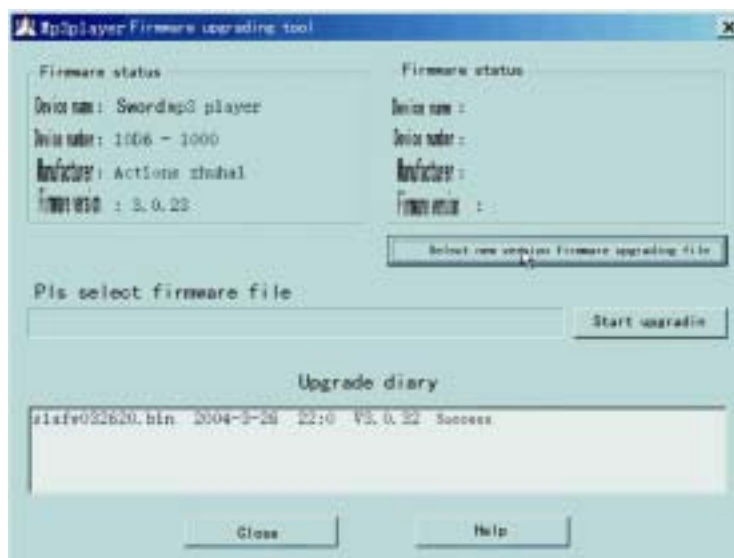
4 . After finish conversion, play had already prepared AMV video document automatic .



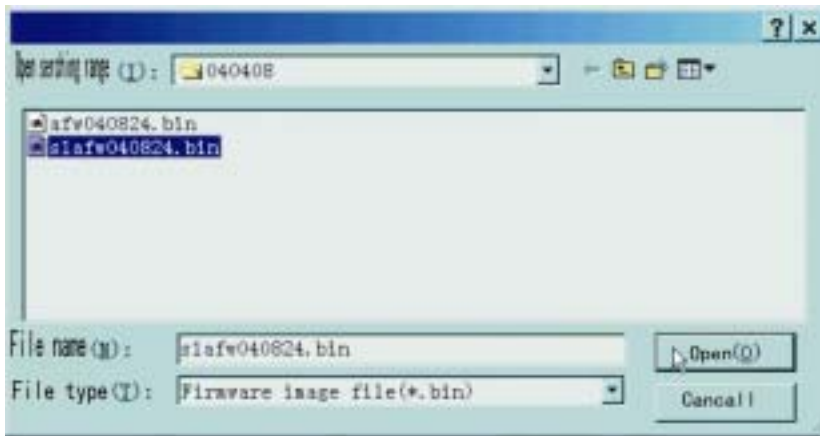
### Player upgrading

The player can upgrade and maintain system Firmware by using the installing tools

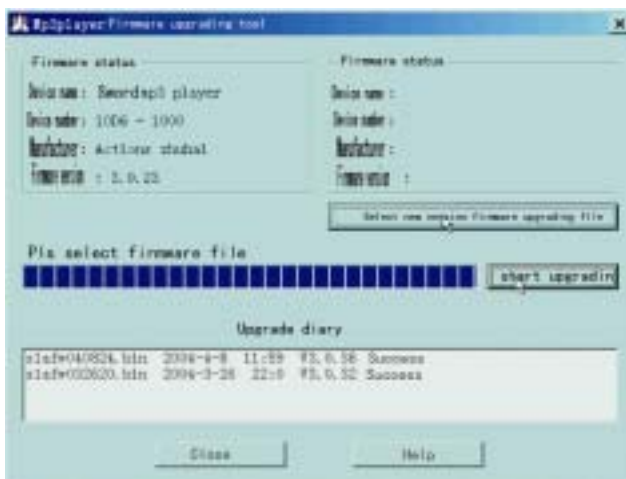
1. Main menu entering
2. Pluck NEXT to choose "System setting"
3. Press MODE to enter "System setting"
4. Pluck NEXT to choose "Firmware upgrading" to press MODE to enter
5. Connect the player to PC
6. Run the upgrading tool "MP3 Player Update" of PC and click "Choosing new edition files" button



7. Choose the new Firmware procedure (It can be found in the disk and uploaded and downloaded form the website of factory)



8. Click the button “Starting upgrading” and begin the upgrading work



9. The player will show the indication after finishing upgrading



Firmware upgrading can improve and refine the function of player. It will not affect the normal running of player if you don't use the Firmware upgrading



Firmware upgrading may lead to the wrong operation so that the player can't work normally! Please read the instruction carefully. The operation fits for the person who has certain computer knowledge



The Firmware upgrading software isn't fit for other serial players. The opposite is the same

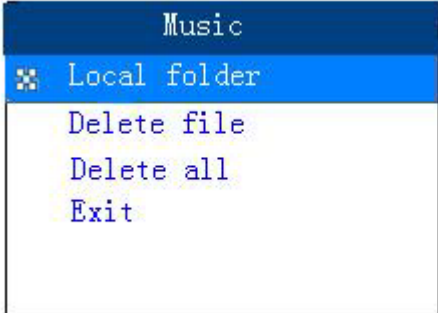

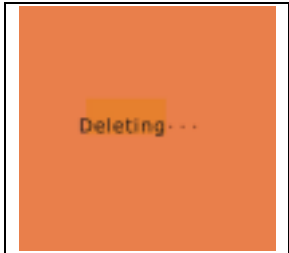
### Other settings

#### Different catalogs choosing (Stop son menu)

Users can put the different files into different catalogs (The catalog should be made in advance) so that play and manage the files selectively. The player supports the recognition of 9 one-level son catalogs

<p>1.Interface of stop. ( The present example is music mode. It can choose the catalog while playing and recording )</p> 	<p>2. Press MODE to enter the son menu of stop</p> 
<p>3.Press MODE to enter catalog to choose interface</p> 	<p>4. Press Next or Prev to choose in catalog</p> 
<p>5.Press MODE to enter catalog and choose interface</p>	

**Notice: Music mode, recording mode and playing mode can set the corresponding catalog that can correspond the different catalog  
Files deleting (Son menu of stop)**

<p>1. Interface of stop. ( There is no interface in FM )</p> 	<p>2. Press MODE to enter the son menu of stop</p> 
<p>3. Pluck NEXT or PREV to choose 'single file' or 'All files' in the menu</p>	<p>4. Press MODE to enter the deleting interface</p>
	
<p>5. Pluck NEXT to change 'NO' into 'YES'</p> 	<p>6. Press MODE to confirm and delete</p> 



**“Delete all” will delete all the corresponding files in the present mode of present catalog (Such as deleting all files in the music mode. The recording files will not be deleted but the music files)**

**The deleting interface of FM will be simpler which will come out the third step. It will delete the formal saving radio station**








**While deleting the files, please make sure bounce up the player and pull the USB cable out, or it will come out the phenomenon that the file can't be deleted**

### **Playing mode (Son menu playing)**


**You can choose different playing mode while playing music or music files (Such as repeating and cycling)**

**The first item is “Playing mode” in the son menu playing. The player will play according to the setting regulation when you choose and confirm**


#### **REPEAT**

 ( Normal )	Continue to play the next song while finishing the present son until all files stop.
 ( Repeat One )	Repeat one music
 ( Folder )	Play all music of the file
 ( Repeat Folder )	Play and repeat all songs of the file
 ( Repeat All )	Play and repeat all the music

#### **SHUFFLE**

 ( Random )	Play the music of present file randomly
--	---

#### **INTRO**

 ( Intro )	Play all the songs' 10 seconds of the present files by sequence.
---	--

### **Playing speed (Son menu playing)**

**You can choose different playing speed (like the fast and slow) while playing music (It takes effect for MP3), but the sound will not be changed**


- 1. Music playing**
- 2. Press MODE to enter the son menu playing**
- 3. Pluck NEXT to choose the option “Playing speed”**
- 4. Press MODE to enter the “Playing speed” to choose menu**

5. Pluck NEXT to fasten playing, and pluck Prev to slow playing  
 Notice: It will point to every song after changing the speed until setting next time

Replay mode (Son menu playing)  
 Enter by playing son menu

### A-B replay


1. Music playing or recording
2. Press MODE to enter the son menu playing
3. Pluck NEXT to choose the option of "Replay mode"
4. Press MODE to choose "Replay mode"

Replay mode: "A" is shining in the mark  of replay until the starting "A"

5. Pluck NEXT to confirm the starting "A"

"B" is shining in the mark  until confirming the starting "B"

6. Pluck NEXT to confirm the starting B

The mark of replay  has fixed. Start repeating between A-B until arrives the setting time You can press VOL+ or VOL- to set the "Playing speed" under the replay mode


Follow reading function (There is not the function of the playing mode)



You can press to exit the repeating mode. Press Prev to restart A in the mode (The playing times should refer to the "Replay times")

Follow reading function (There is not the function of the playing mode)



3.The mark of replay  will change into the mark of follow reading when you begin recording. The length of time is the time of A-B





4.When the time is up, it begins the original



**Press Prev to recede the state of "A-B replay in this state**

### **Contrast function (There is not such function in the playing mode)**

- |   |  |
|---|--|
| <p>1.The mark of replay will change into "  " after entering the contrast function when it plays original sound.</p> | <p>2.The mark will change into "  " after the original sound has finished when it plays the follow sound of users'.</p> |
|---|--|



**Pluck Prev to recede the state of "Follow reading function" in this state**



**Press MODE to exit the replay mode in the above three states**

**Replay times (Son menu playing)**

**The operation method refers to "Backlight time" setting**

**The replay times decide how long A-B replay will exit**

**Replay interval (Son menu playing)**

**The operation method refers to the "Music Effect Mode" setting**

**The replay instance decide the pausing time of this playing and the Prev playing**

**Key points recommending**



**Outer space function**

The common users of MP3 will be disturbed by “ Materials outlet ting” who are not content the “Personal materials” seen by others. It will cause a big trouble that they have to delete all the private things before lending their MP3

From now on, the player supply the function “Outer space” which can settle the problem out

Users can divide the USB disk into two part at any proportion by the random tools. (Users can see two disk marks in the computer. Windows 2K needs to install SP4 or they can only see one disk mark. If you want to see the other disk mark, you should choose “Single disk” or “single coded disk” under “System setting/Connection mode”). Coding one of the two (You can not code but using the two disks). Hiding the content. Others can’t see the data that is the best “Outer space” function.

### Knotty Problems

No supply power	Check whether the battery installing well or not Make sure whether it plays or not
No sound in the earphone	Make sure the volume is not under 0 and the earphone connecting Make sure the clean of earphone The destroyed MP3 can cause different noise so that it will play music. Please make sure the complete files
There unusual state in the screen	Make sure that you choose the right language
Can't download the music normally	Check whether the USB connection is right or not Whether the drive procedure installing is right or not Check whether there is the empty memory or not

## Specification

Screen	2.0 inch screen display	
Computer connection	USB 2.0 (HS)Flash disk	
Build-in memory	128MB, 256MB, 512MB, 1GB,2GB,4GB	
Supply power	The longest playing time is 5 hours	
REC	Sample ratio	8KHz
	Recording format	WAV ( 32K bps ), ACT ( 8K bps )
	Recording time	35hours ( ACT,128M Flash )
MP3、WMA、WMV	The biggest outputting ratio	( L ) 10mW + ( R ) 10mW ( 32Ohm )
	MP3 bit rate	8K bps – 320K bps
	WMA、WMV、ASF bit rate	5K bps – 384K bps
	Frequency corresponding	20Hz 至 20KHz
	SNR	85dB
FM radio	Frequency scope	76 MHz-90MHz/87MHz-108MHz
	Radio stations	20+20
	The biggest output rate of earphone	(L) 10mW + (R) 10mW (320)
	SNR	45dB
Music format	MP1、MP2、MP3、WMA、WMV、ASF、WAV	
Temperature	-5 to 40 degree centigrade	
Multi languages	Traditional Chinese, English, simple Chinese, German, French, Italian and Spanish etc	
Operation system	Windows98/SE/ME/2K/XP、Mac OS 10、Linux 2.4.2	

Notice: You will not informed if the production design and the specification.

**This device complies with Part 15 of the FCC Rules.**

Operation is subject to the following two conditions:

- (1) This device may not cause harmful interference.
- (2) This device must accept any interference received, including interference that may cause undesired operation.