
APE-540C

(User Manual)

SW-APE-540C-UG-V0.3E

March 10, 2009



AnyDATA®

AnyDATA CDMA Module Series Reference Design Specification
Copyright © 2009 AnyDATA Corporation. All Rights Reserved.

Any part of this document may not be distributed, communicated, reproduced or transmitted in any form or by any means, electronic or mechanical or otherwise, for any purpose, without the permission of AnyDATA Corporation.

This document can be subjected to revision without further notice.

RF Exposure Warning:

The radiated output power of this device is below the FCC radio frequency exposure limits. Nevertheless, the device should be used in such a manner that the potential for human contact during normal operation is minimized. In order to avoid the possibility of exceeding the FCC radio frequency exposure limit, human proximity to the antenna should not be less than 20cm.

§ 15.21 Information to user.

No changes or modifications not expressly approved by the party responsible for compliance could void the user's authority to operate the equipment.

Contact Address

AnyDATA.NET, Inc.(Korea)
DaeGo Bldg, 1591-10
Kwanyang-dong, dongan-gu,
Anyang City, Kyunggi-do Korea.
<http://www.anydata.co.kr>
E-mail: infodata@anydata.net
Rep: +82-31-380-7100
Fax: +82-31-476-6021

Contents

AnyDATA.NET CDMA Systems	4
User Instruction	5
Illustrate Instructions	6
LED	7
Connecting Express Card to PC	8
■ Inserting/Removing Express Card	8
System Requirements	11
■ Check the operating condition	11
Easy Wireless Net Installation and Uninstallation (In Windows 2000)	12
Easy Wireless Net Installation and Uninstallation (In Windows XP)	14
■ Installing Easy Wireless Net and Driver	14
■ Uninstalling Easy Wireless Net and Driver	18
Easy Wireless Net Installation and Uninstallation (In Windows Vista)	20
■ Installing Easy Wireless Net and Driver	20
■ Uninstalling Easy Wireless Net and Driver	24
Using Easy Wireless Net	26
■ Main application interface	26
■ Connecting / Disconnecting the Internet	28
■ Sending and Receiving SMS	29
■ Writing New Message	30
■ Viewing sent message	32
■ Viewing received or saved message	33
■ Phonebook	34
■ Setting Environment	35
■ [About]	35
■ [Basic]	36
■ [RUIM Card]	37
■ [Advance]	38
■ [User]	39
CDMA Q&A	40

AnyDATA.NET CDMA Systems

Thank You for Purchasing the "Express Card".

APE-540C is slim-line Express Card with Plug & Play solution offering the most user-friendly wireless Express Card available on 3G network.

With AnyDATA's proven performance and reliability in EVDO (Rev. A) technology, it ensures high-speed data connection at 1.8Mbps uplink and 3.1Mbps downlink

APE-540C is the next generation of wireless data card designed by AnyDATA to be compatible with CDMA 850MHz networks supporting the higher data rates of up to 3.1Mbps using EVDO (Rev. A) technology.

User Instruction

■ Packet data communication fees

Contrary to the voice communication fees, you may pay the fees by actual data usage. Please ask the service provider or A/S center for more detail.

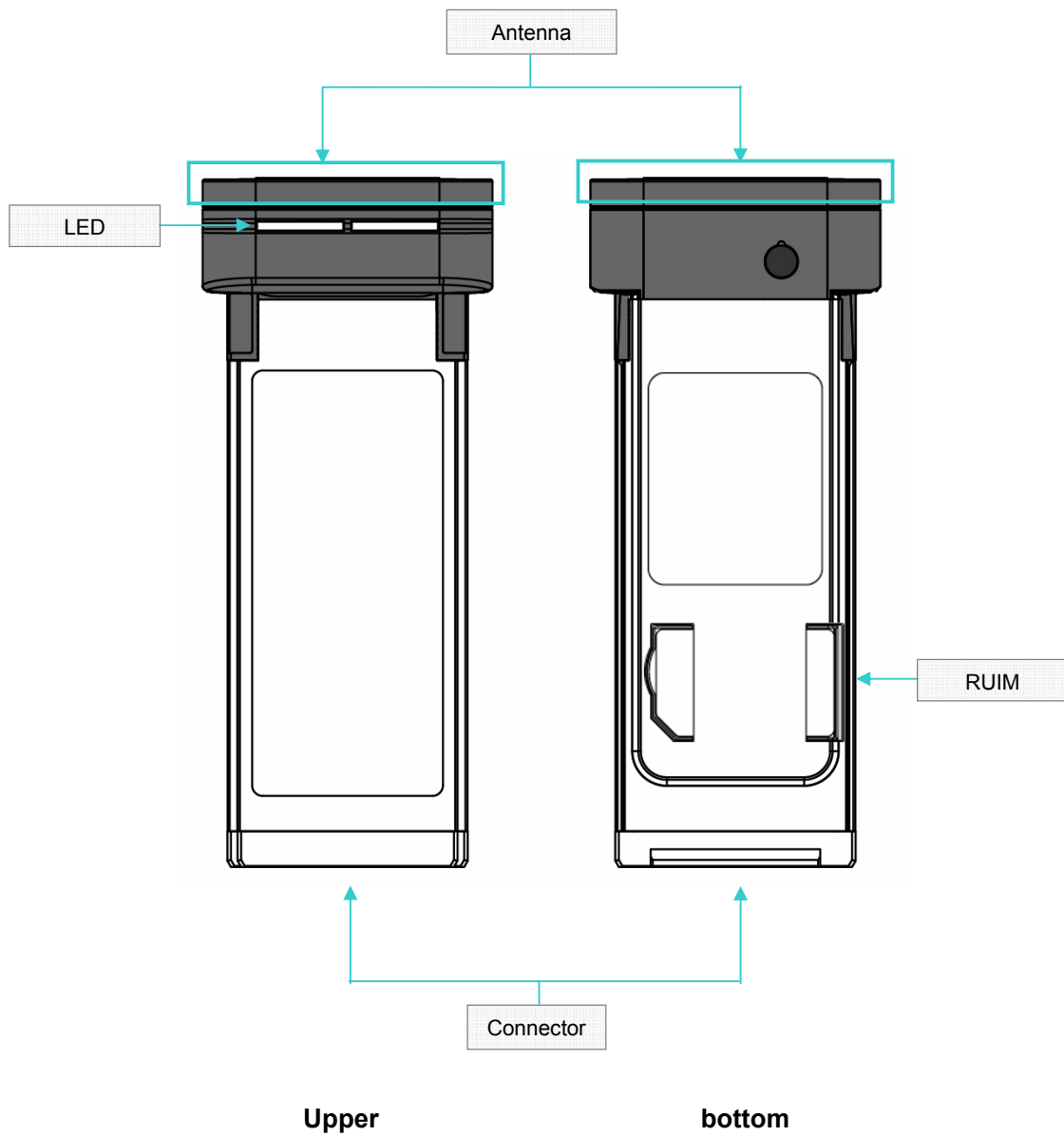
<Note>

- Please be careful that data service rates may become high when performing communication with large amount of data such as browsing the homepage and downloading data.
- Please check carefully, the data service rates for the International Roaming Data differ from domestic data service rates.

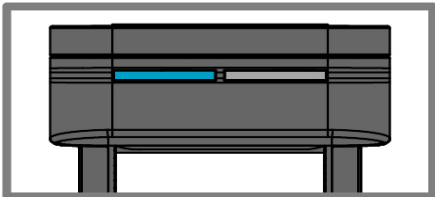

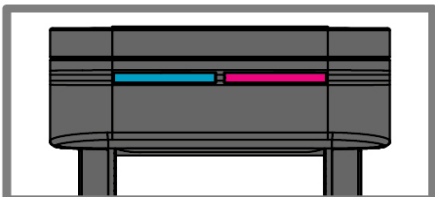
■ User authentication as Network Access

You may be required to enter User ID and Password to access the Internet. In this case, ask the service provider or A/S center if you don't know the ID and password.

Illustrate Instructions



LED

	LED Action
Power	
IDLE	
BUSY	

Connecting Express Card to PC

■ Inserting/Removing Express Card

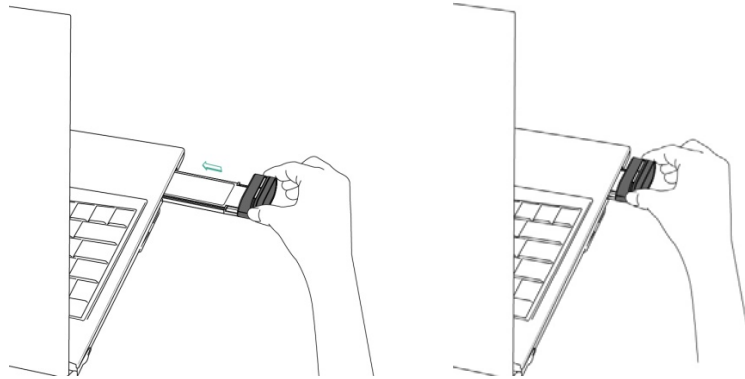
When you install the Express Card to PC for the first time, you need to have the driver installed first.

<Note>

- Check if the PC has the Express Slot.
- The Express Slot may be located differently from PC to PC.

■ Inserting Method

1. Turn on the PC.



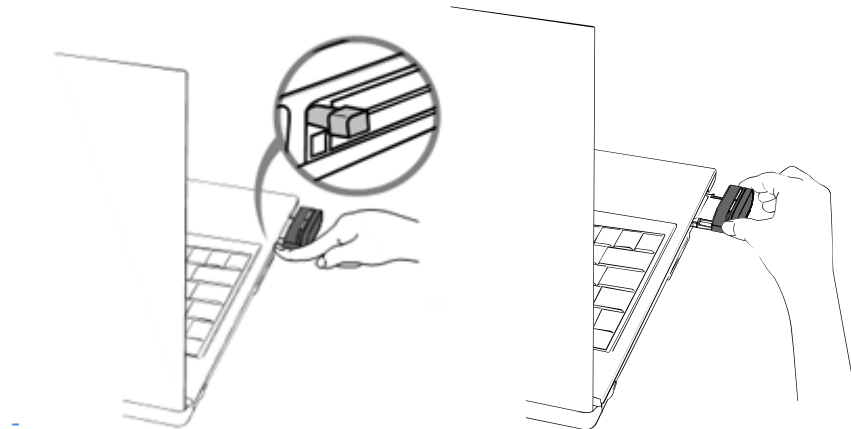
2. Insert the Express Card to the Express Slot of PC with LED facing down.

■ **Method 1: Removing the Express Card by pushing the button as indicated**

1. Check the Express Card is disconnected.

<Note>

- Exit the Express Card utility if it is in use.



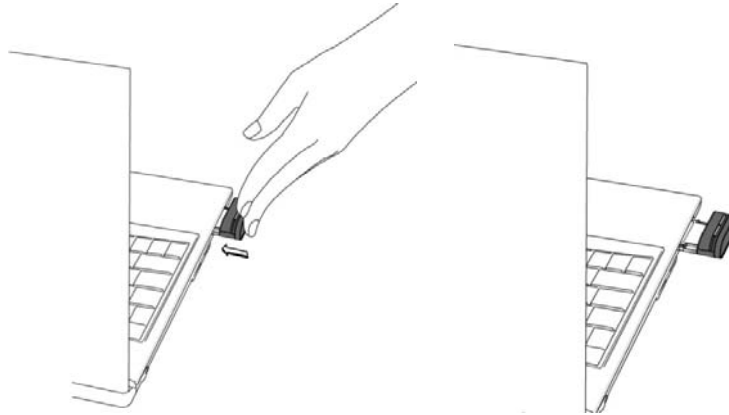
2. Push the Express Card softly as indicated, then it will be ready to remove easily.
3. Hold the sides of the Antenna and pull it out.

■ **Method 2: Removing Express Card by pushing it to the direction as indicated**

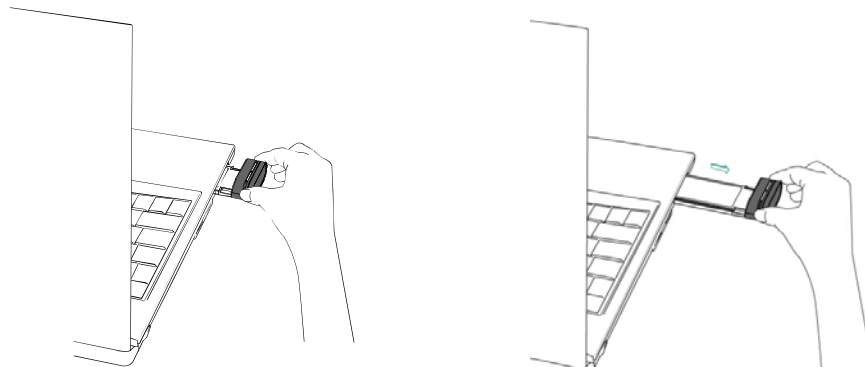
1. Check the Express Card is disconnected.

<Note>

- Exit the Express Card utility if it is in use.



2. Push the Express Card softly as indicated, then it will be ready to remove easily.



3. Hold the sides of the Antenna and pull it out.

System Requirements

■ Check the operating condition

Install and operate the program under the following operational environments:

Item	Requirement
Laptop	Laptop with Express Card / 34 slot compatible
OS	Windows 2000 (SP4) Windows XP (SP3) Windows VISTA (SP1)
Memory	128Mb or more
Hard disk	50Mb or more available space
Display	800 x 600 dots or more recommended

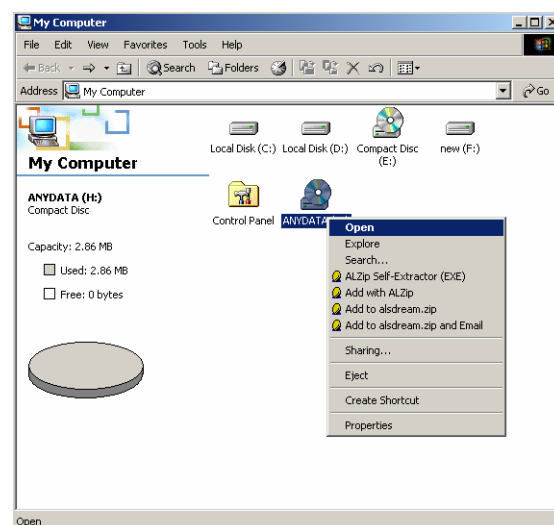
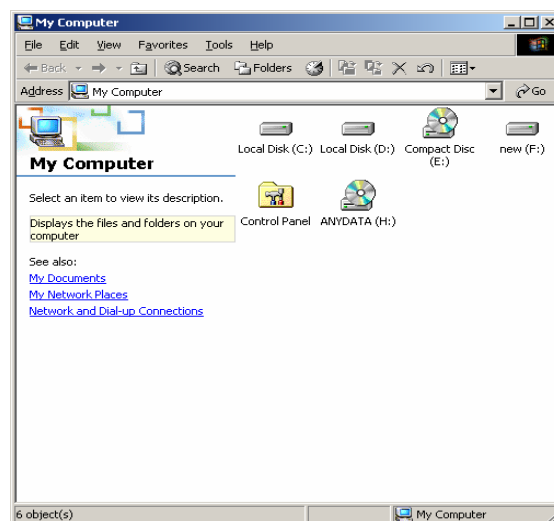
Easy Wireless Net Installation and Uninstallation (In Windows 2000)

<Note>

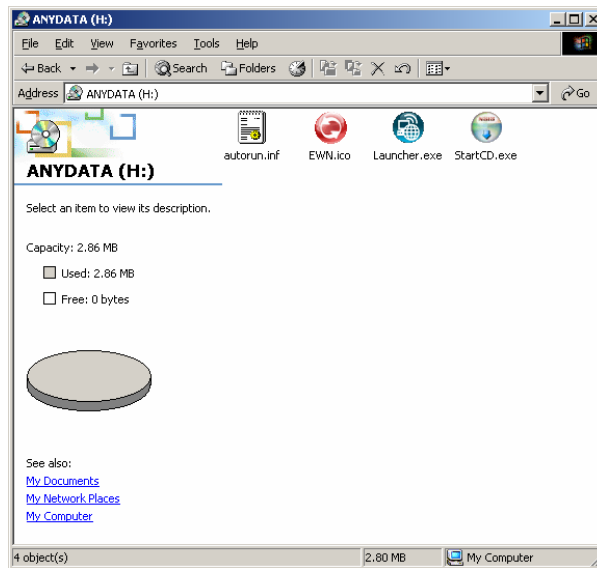
- Express Card doesn't support Plug & Play in Windows 2000 and installation should be executed manually as described below.

Follow the steps to use Express Card for Windows 2000.

1. Install the Express Card to PC and verify if it is recognized properly as CD-ROM.
2. Open "My Computer".
3. Click "AnyDATA" CD-ROM.
 - 1) Double-click the "AnyDATA (H:)" or right-click and select "Open".



4. Double-click the “StartCD.Exe”



<Note>

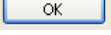
- Follow the step as indicated page 14, “Installing Easy Wireless Net and Driver” and page 18, “Uninstalling Easy Wireless Net and Driver”.

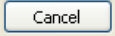
Easy Wireless Net Installation and Uninstallation (In Windows XP)

■ Installing Easy Wireless Net and Driver

1. Connect the modem to your PC with Express Card.

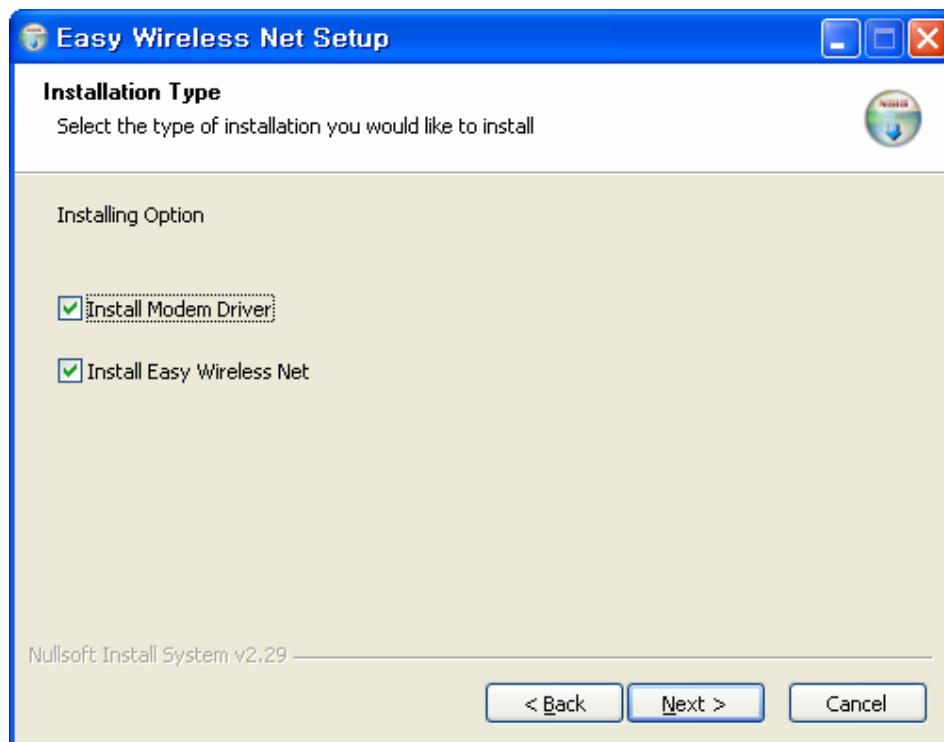
If the driver has not been installed in your PC yet, Modem package installer will install the driver automatically. Otherwise if it still has not been installed, put the install CD in CD-ROM and run StartCD.exe manually.

2. Select the desire language as shown below. Press  button to proceed. By pressing

 button, the installation of Easy Wireless Net Program will stop.

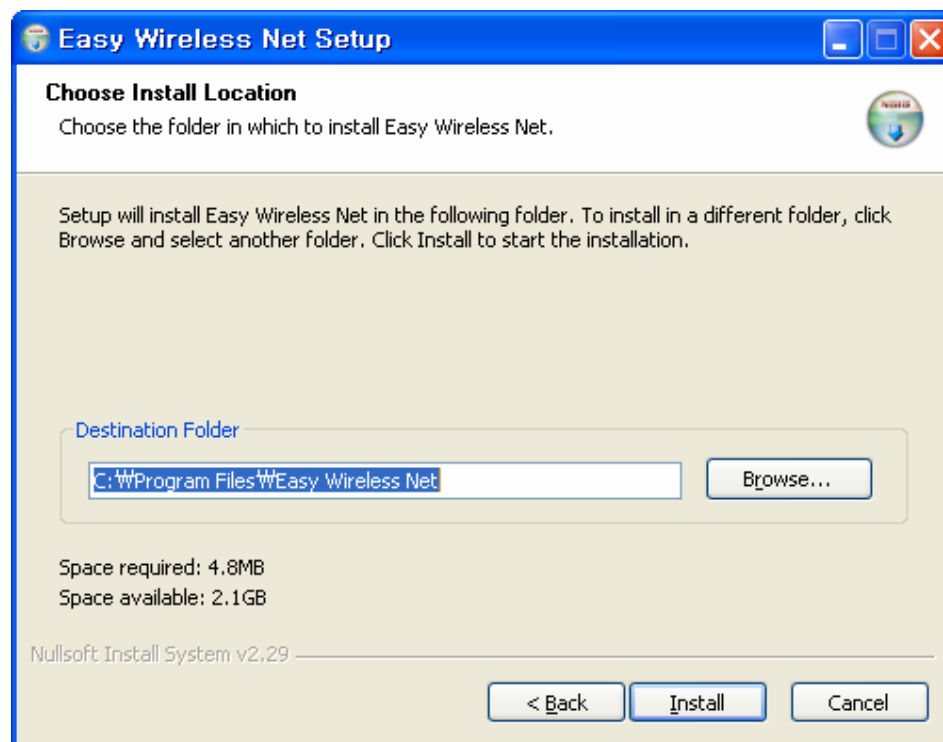


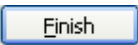
3. You can install Easy Wireless Net Program and modem driver by choosing the installing option.



4. Next window displays asking proper path for installing the program.

Default path is <C:\Program Files\Easy Wireless Net>



5. Press  button for ending the program installation.



6. The computer needs to restart after the driver installation completed.
To restart the computer later, select "I want to manually reboot later".

<Note>

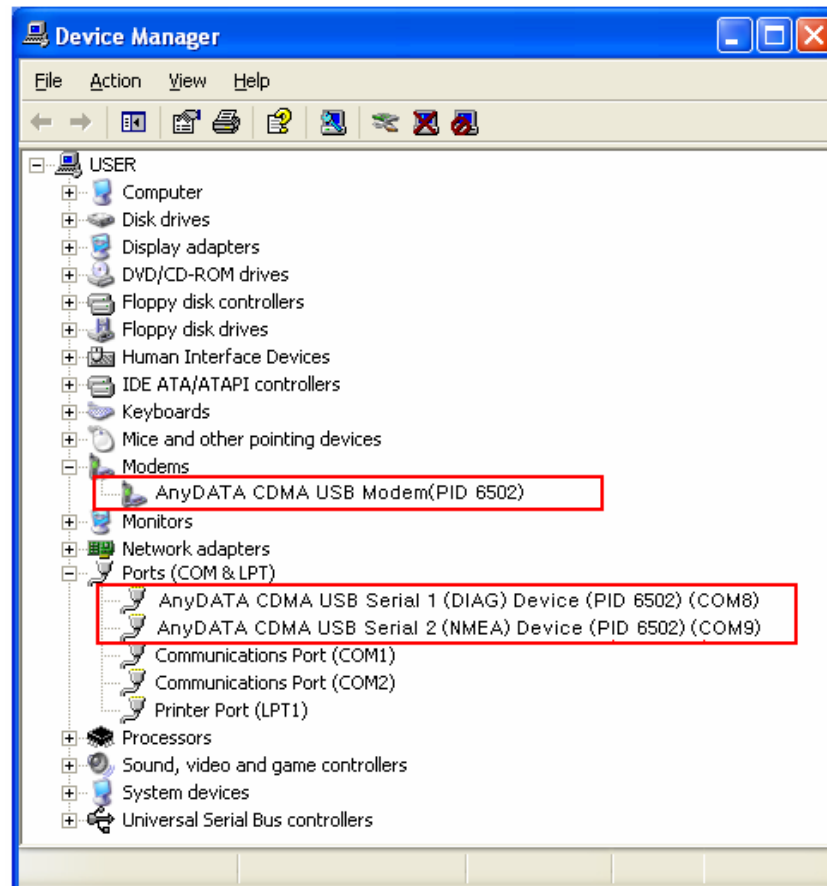
- It is recommended to select "Reboot now".

The device may not function properly if you select "I want to manually reboot later"

<Note>

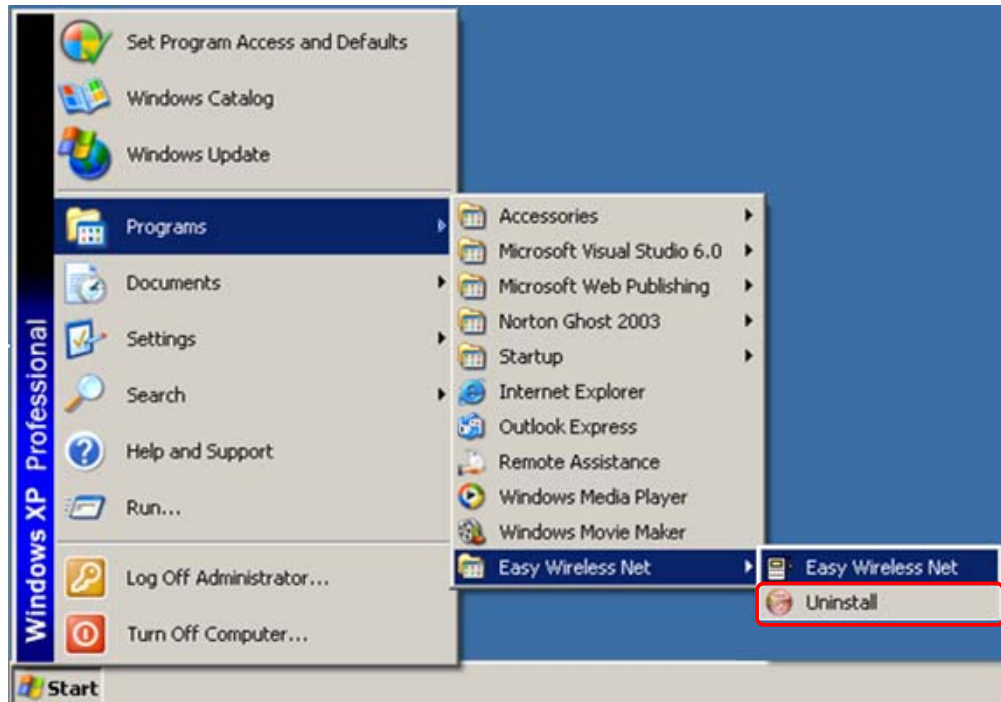
- Connect the modem and PC's Modem Slot, and check if the driver is installed properly in <Device Manager>. See the followings to the location of <Device Manager>
[Start ► Control Panel ► System ► Hardware Tab ► Device Manager]

As shown in below with red boxed that shows <AnyDATA CDMA Express Card> and <AnyDATA CDMA USB Serial 1/2 Device>, the driver has been successfully installed.

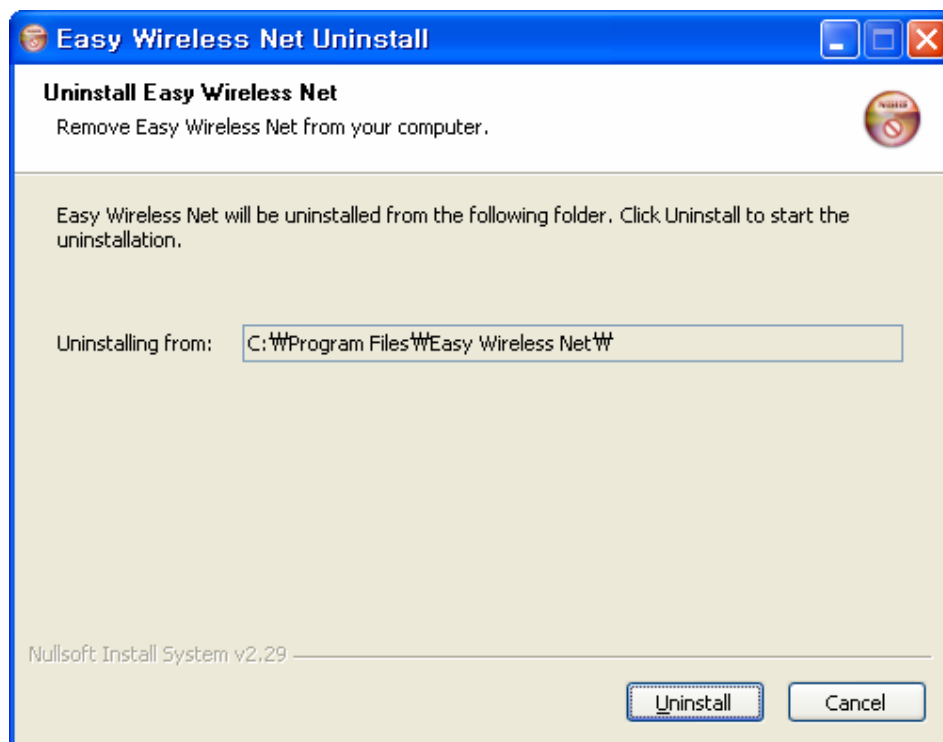


■ Uninstalling Easy Wireless Net and Driver

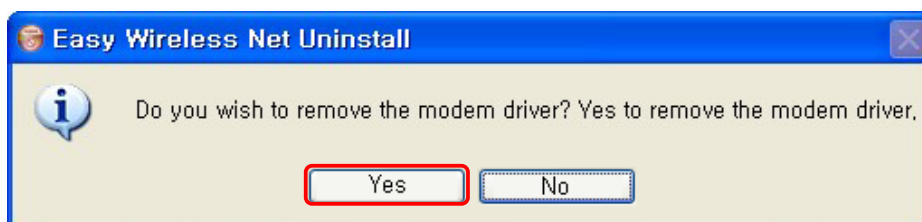
1. [Start ► Programs ► Easy Wireless Net ► Uninstall]



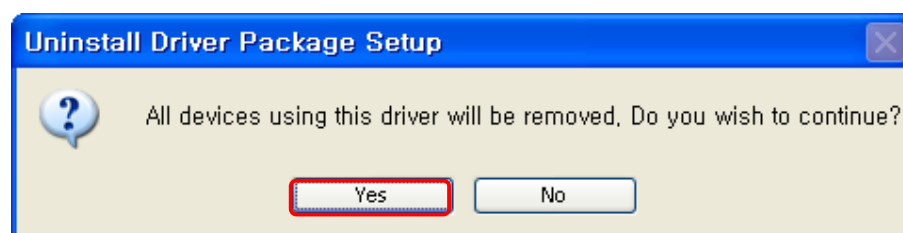
2. By pressing Uninstall button, EWN program will be uninstalled.



3. Click "Yes" to remove the modem driver.



4. Click "Yes". Following screen will appear twice.



5. The computer must restart after the driver is uninstalled.

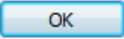
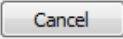


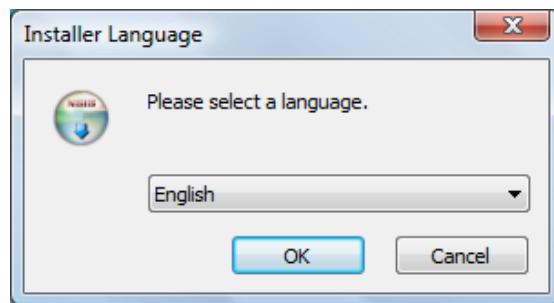
Easy Wireless Net Installation and Uninstallation (In Windows Vista)

■ Installing Easy Wireless Net and Driver

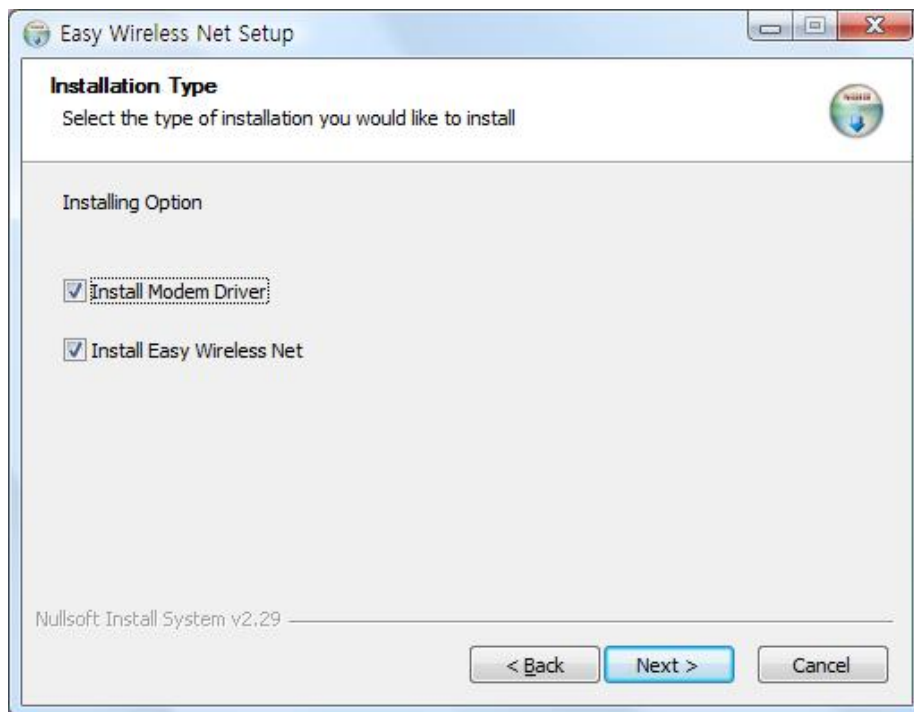
1. Connect the modem to your PC with using Express Card.

If the driver has not been installed in your PC yet, Modem package installer will install the driver automatically. Otherwise if it still has not been installed, put the install CD in CD-ROM and run StartCD.exe manually.

2. Press  button to proceed. By pressing  button, the installation of Easy Wireless Net Program will stop.

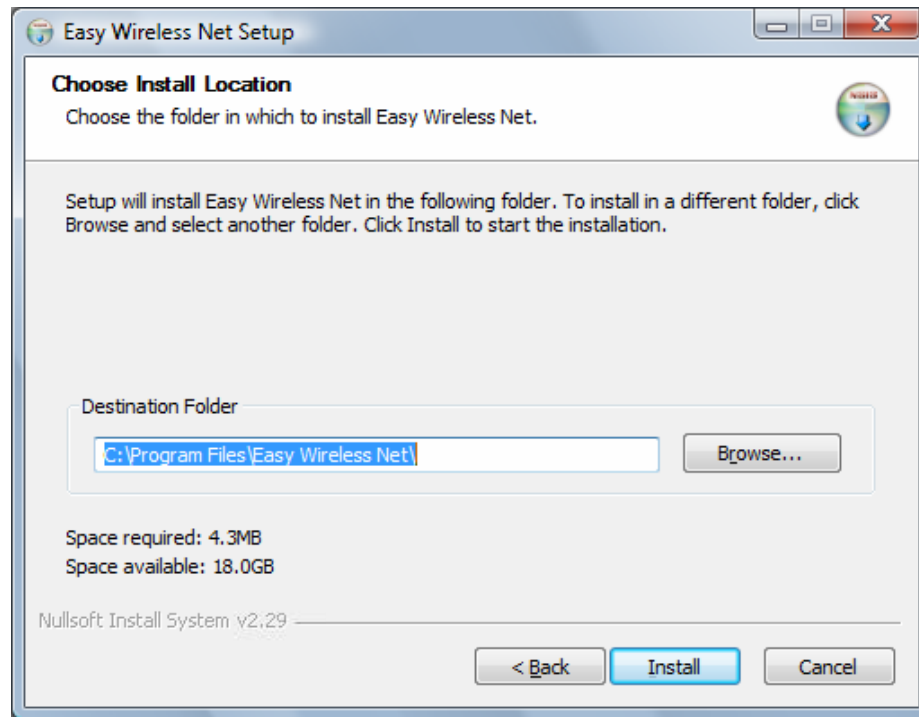


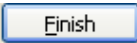
3. You can install Easy Wireless Net Program and modem driver by choosing the installing option.



4. Next window displays asking proper path for installing the program.

Default path is <C:\Program Files\EasyWirelessNet>



5. Press  button for ending the program installation.



6. The computer needs to restart after the driver installation completed.
To restart the computer later, select "I want to manually reboot later".

<Note>

- It is recommended to select "Reboot now".

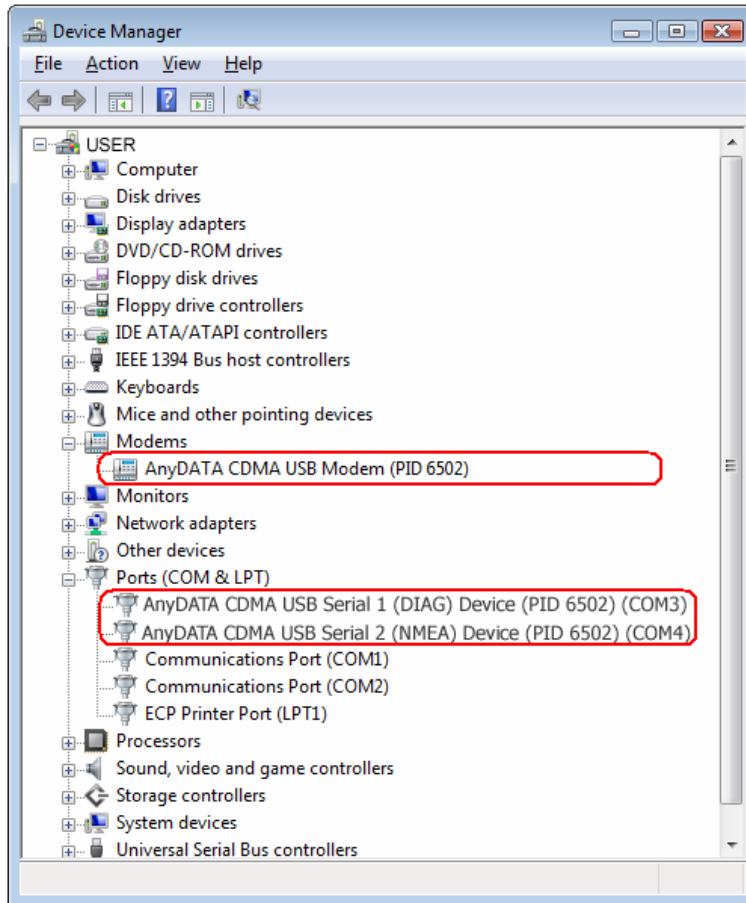
The device may not function properly if you select "I want to manually reboot later"

<Note>

- Connect the modem and PC's Modem Slot, and check if the driver is installed properly in <Device Manager>. See the followings to the location of <Device Manager>

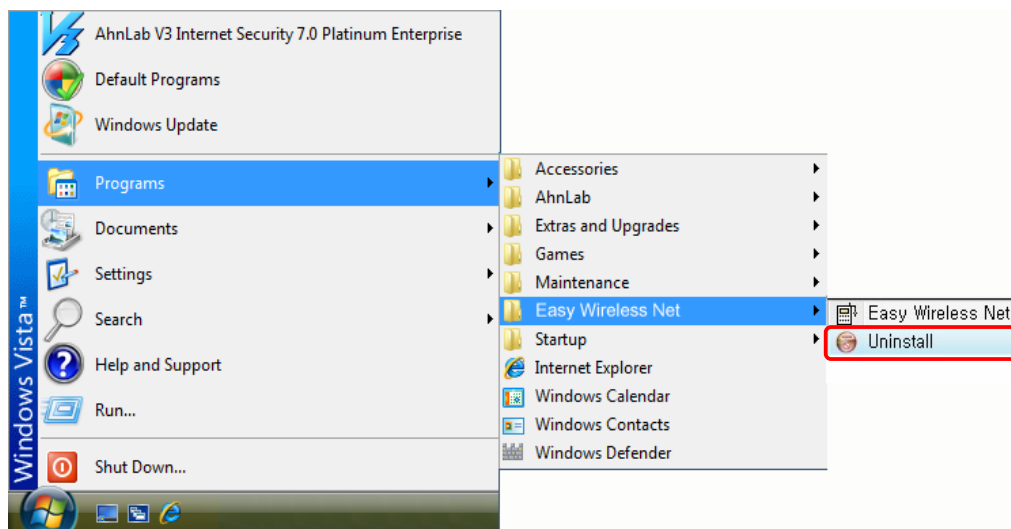
[Start ► Control Panel ► System and Maintenance ► Device Manager]

As shown in below with red boxed that shows <AnyDATA CDMA USB Modem> and <AnyDATA CDMA USB Serial 1/2 Device>, the driver has been successfully installed.

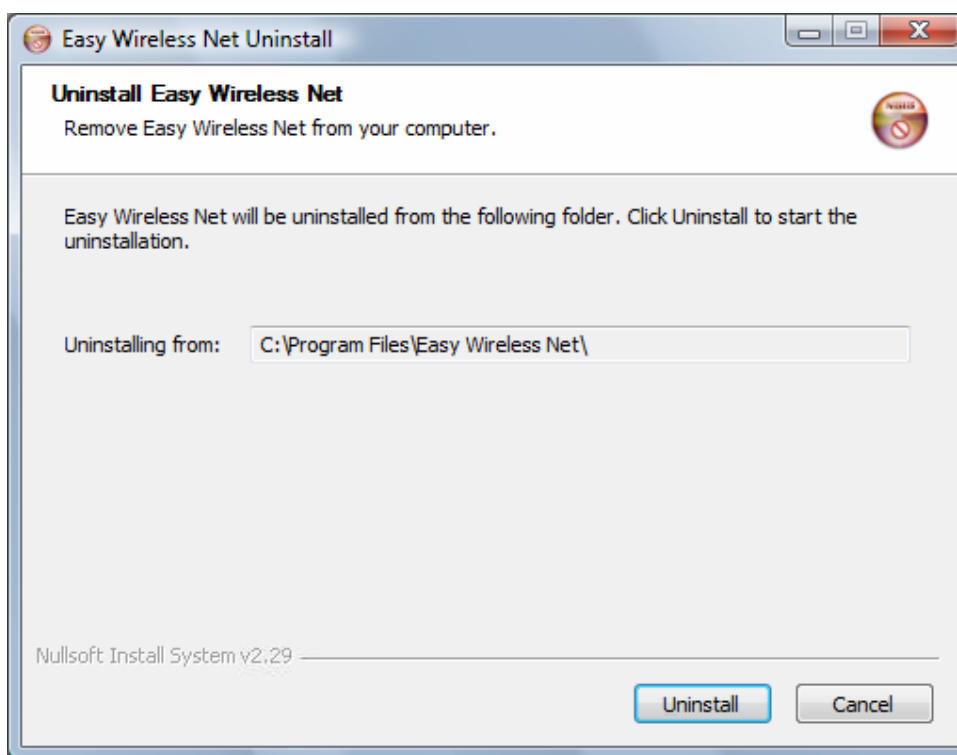


■ Uninstalling Easy Wireless Net and Driver

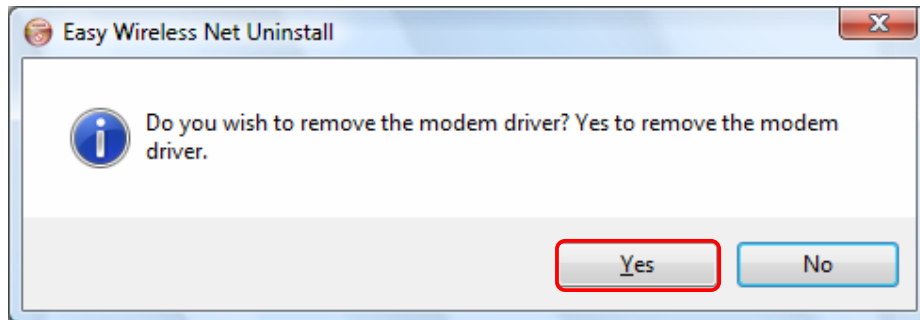
1. [Start ► Programs ► Easy Wireless Net ► Uninstall]



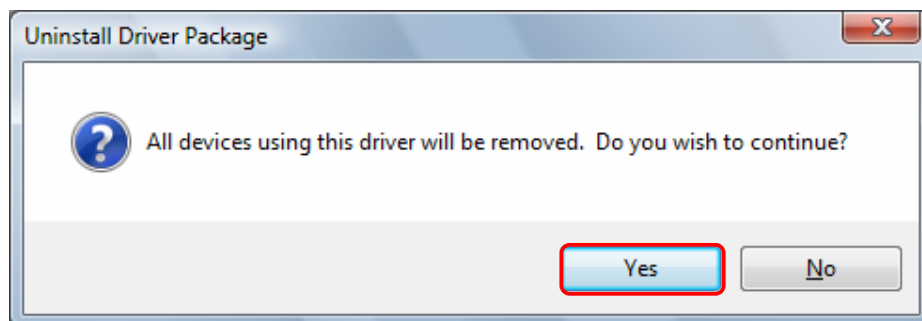
2. By pressing Uninstall button, EWN program will be uninstalled.



3. Click "Yes" to remove the modem driver.



4. Click "Yes". Following screen will appear twice.



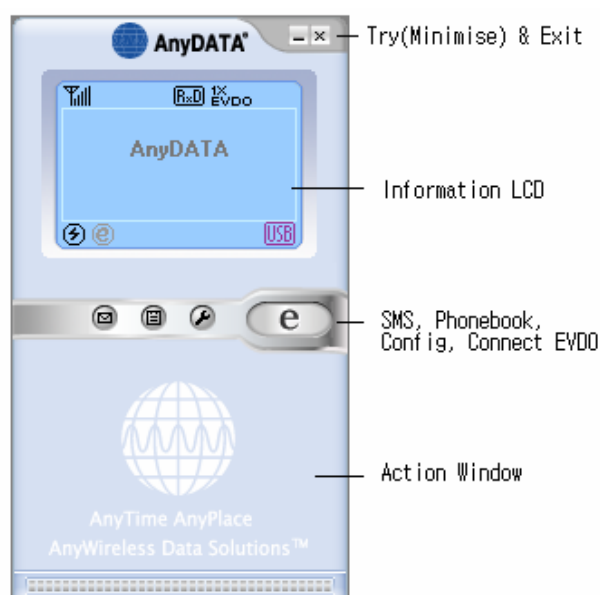
5. The computer must restart after the driver is uninstalled.





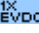
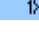
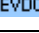
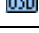










Using Easy Wireless Net

■ Main application interface

Once you insert the modem to PC, double-click the shortcut icon on desktop, then you will see the Easy Wireless Net as shown.



A: Modem status window



Display	Function
	RSSI Signal Strength Indicator
	New message arrived.
	Supports Hybrid mode
	Only 1X mode available
	Only EVDO mode available
	USB connected
	Roaming
	Connected to the Modem
	Either the cable is disconnected to the modem or improper port connection.
	Internet connected
	Internet disconnected
	Connected to the Internet button.
	Disconnecting to the Internet
	SMS menu
	Phonebook Menu
	Setup Easy Wireless Net

B: Information window

- Displays the current status or operating instruction or etc.

■ Connecting / Disconnecting the Internet

■ Connecting the wireless internet connection.

1. Click 
2. And then, you are ready to connect to internet.
( will appear at that time.)

<Note>

- While connect to the internet, information window displays connection time and volume of downloaded packet transmission

■ Disconnecting wireless internet connection

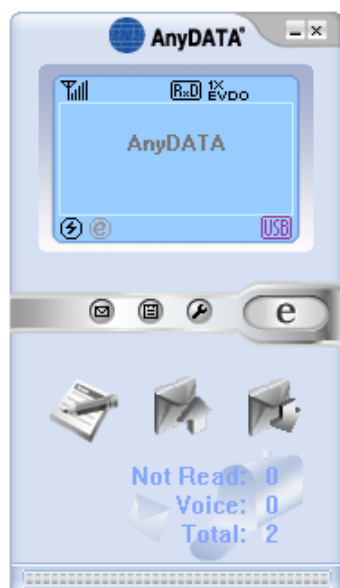
1. Click 

<Note>

- While internet is activated, the various setup menu() is deactivated.

■ Sending and Receiving SMS

Press  button.




As seen in above, there will be three buttons.

(Write Message, OutBox, and InBox from the left).

Pressing each button will transfer to appropriate screen.

■ Writing New Message

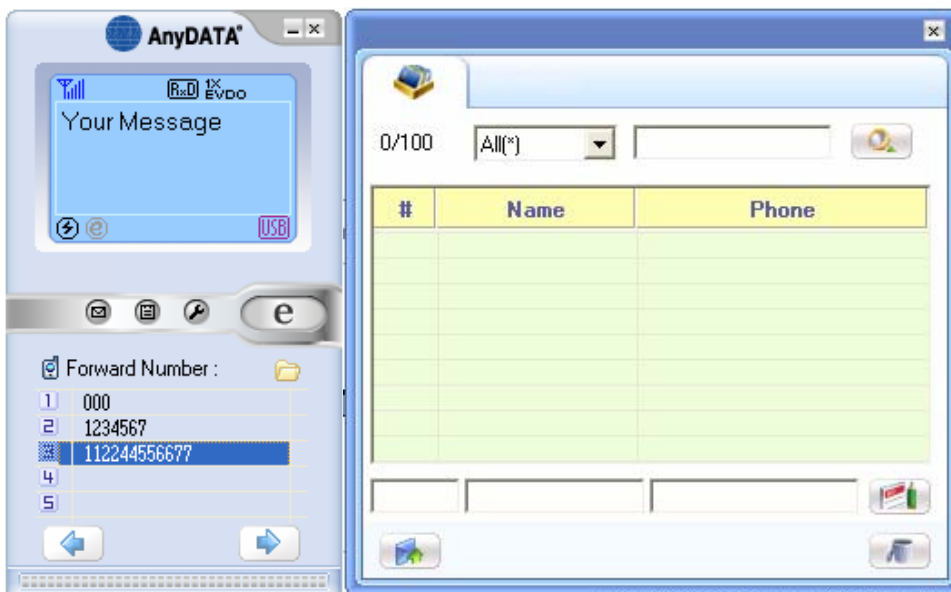
- 1) By pressing "Write Message" icon, the new window will appear for inserting the message.
- 2) Write the message in the window then press  button to move to the next step.



Note:

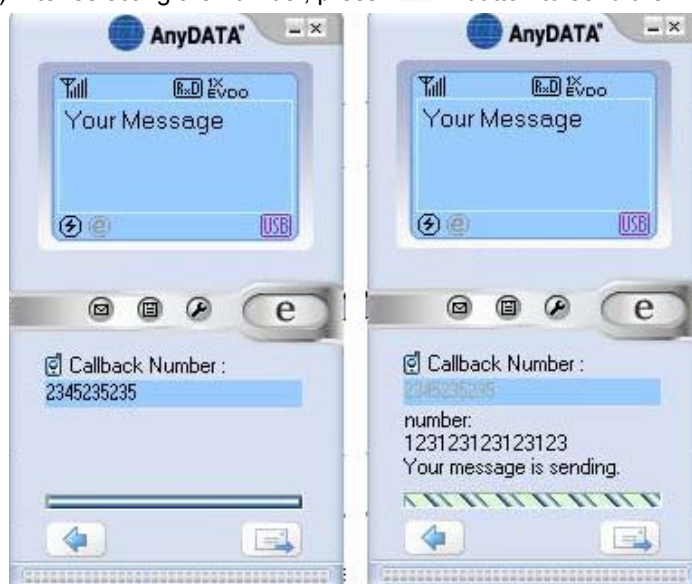
By pressing special characters that is highlighted, that character will be written on the message window.

- 3) Input a phone number/numbers for sending SMS. It is possible to add upto 5 numbers. By pressing a Phonebook, a separate window will appear to select phone numbers.

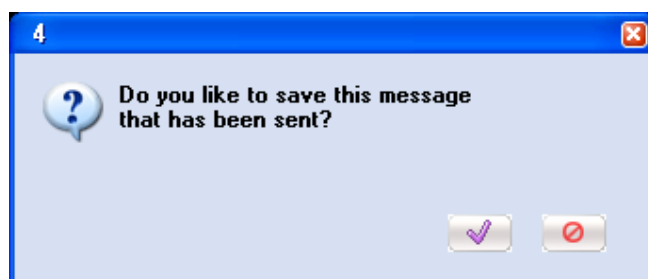


- 4) After inserting phone numbers, press  button to move to the next step.

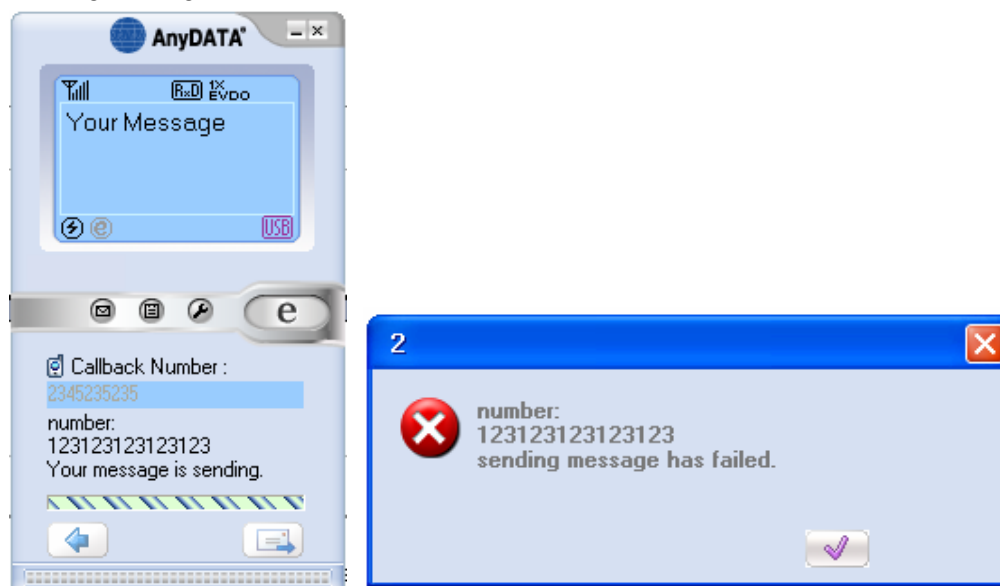
5) After selecting the number, press  button to send the message.





6) After sending a message, the following window will appear.




Sending Message has failed.





■ Viewing sent message

- 1) By pressing “Outbox” icon, you will see a screen as below.
- 2) All sent messages will be shown.
- 3) Select the message then press  button to delete this message.
- 4) Select the message then press  button to display all the contents in the window.





- 5) By pressing  button, the selected message will be ready to send to a new number.

	Message read
	Unread message
	Sent message



Note: Description of icons.

■ Viewing received or saved message

- 1) By pressing "InBox" icon, you will see a screen as below.
- 2) All received messages will be shown.
- 3) It will indicate whether the message was read or not.
- 4) Select the message then press  button to delete this message.
- 5) Select the message then press  button to view the whole contents in the display.



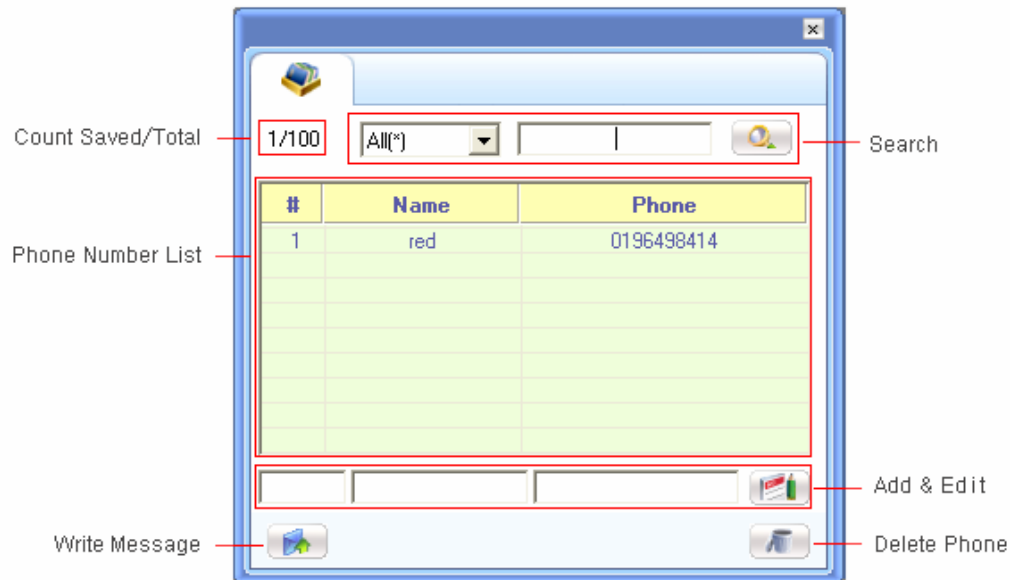
By pressing  button, the selected message will be ready to send to a new number.

	Message read
	Unread message
	Sent message

Note: Description of icons.

■ Phonebook

This is a feature to store phone numbers that uses to make calls accordingly.



By pressing Phonebook  button, following window will appear.

[1/100] Maximum number of Phone numbers can be stored and currently saved phone numbers.



Start searching.

All: Find and display any characters that matches from the Phone Number into a Phone Number List

Index: Finds a phone number based on the index.

Name: Finds all names that contain any one of the letter to be searched.

Phone: Finds all numbers that contains any one of the number to be searched.



Sends SMS message to the selected phone number.



Deletes selected number.

Saves Phone Number into the recorded Index number.

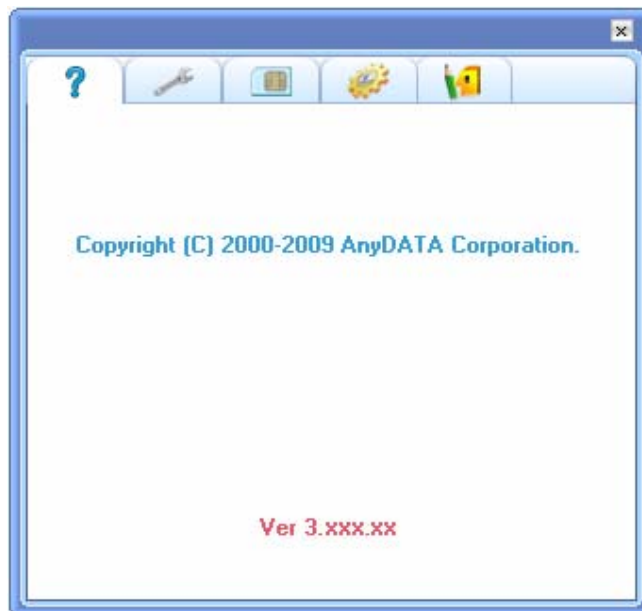
If the same Index number already exists then requires editing of the contents.

■ Setting Environment

There are 5 options and please refer to below for explanations.

■ [About]

Display the software version for EV-DO modem S/W and Easy Wireless Net program.

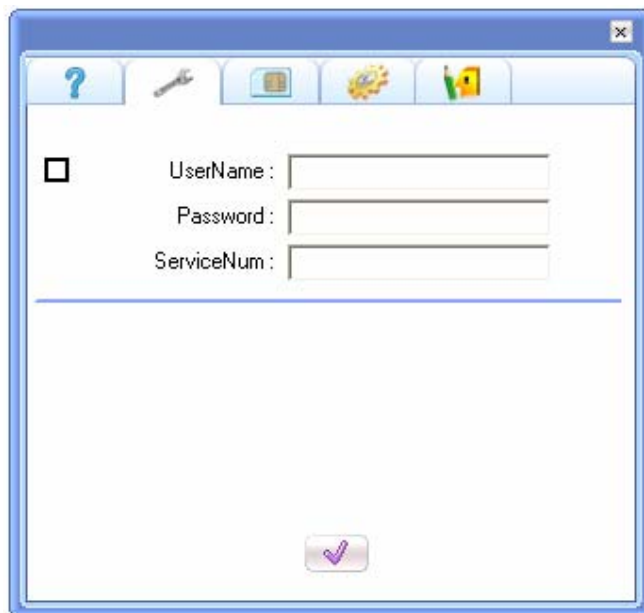


■ [Basic]

The basic configuration for connect to the network using EV-DO modem.

All values are set automatically, however if wants to change the value then check appropriate

☒ box/boxes in the left and press  button to take effect.



UserName : [None]

Password : [None]

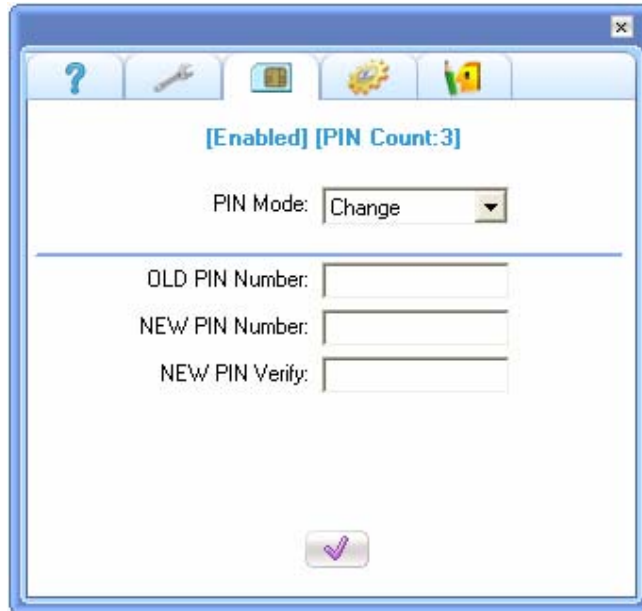
ServiceNum : Internet Connect Dial Number

■ [RUIM Card]

When changing information of the RUIM Card.

When changing information, must know PIN information.

Three times are incorrect and when, it does not use.



The screenshot shows a software dialog box for changing the RUIM Card PIN. The dialog has a blue title bar with a close button (X) in the top right corner. Below the title bar is a toolbar with five icons: a question mark, a wrench, a SIM card, a gear, and a padlock. The main content area has a status bar at the top that reads "[Enabled] [PIN Count:3]". Below this, there is a label "PIN Mode:" followed by a dropdown menu currently set to "Change". A horizontal line separates this section from the PIN entry fields. There are three text input fields: "OLD PIN Number:", "NEW PIN Number:", and "NEW PIN Verify:". At the bottom center of the dialog is a button with a green checkmark icon.

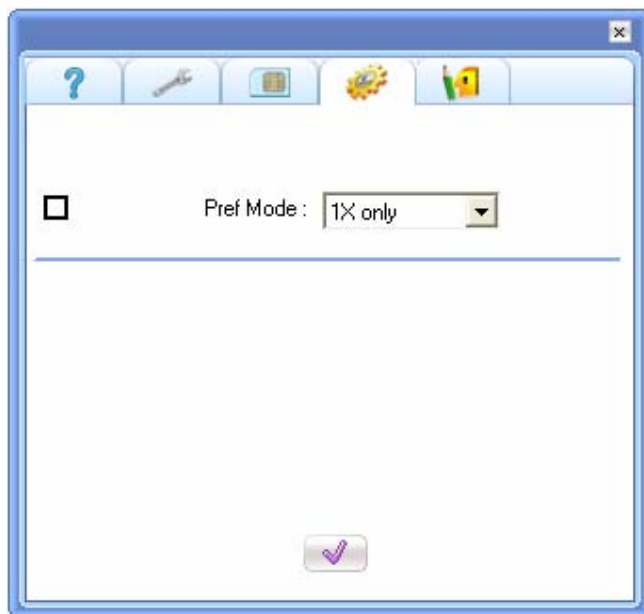
■ [Advance]

This part is to change the important parameter for EV-DO modem.

If wants to change the value then check appropriate ☒ box/boxes in the left and press



button to take effect.



Pref Mode:

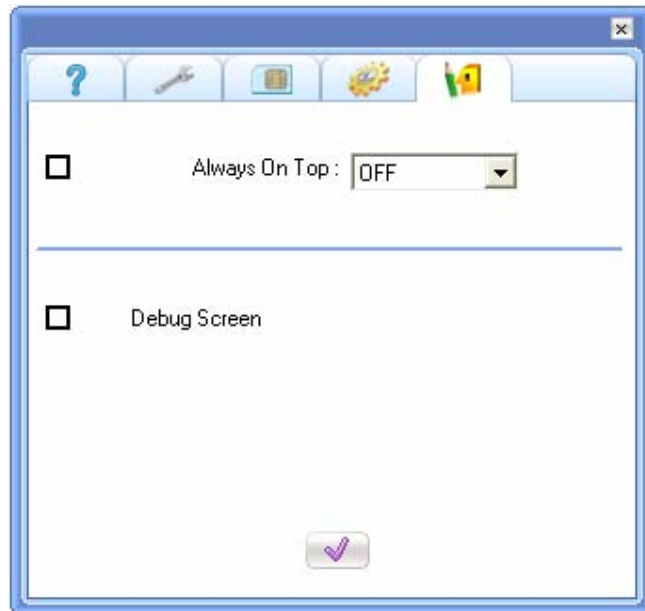
Place to select a mode from 1x, EVDO and 1xEVDO.

<Note> Basically the modem supports all modes if the network supports them. However, if RUIM Card is not supported and any one of the mode is not supported by the network, then it is not possible to get connected in selected mode.

■ [User]

If wants to change the value then check appropriate ☒ box/boxes in the left

and press  button to take effect.



Always On Top: The program window will be always top if "ON" is selected.

CDMA Q&A

• The modem is not recognized.

Symptom	Check
Modem recognition is unadvisable.	Check if the AnyDATA modem and port is worked properly after select with that order ; START→ setting → control panel → Hardware tap → device manager
	Make sure to insert modem all the way to the end of Modem slot
	Check if the Driver for modem is working function properly.

• Driver communicating

Symptom	Check
Communication is unadvisable.	Check that signals are received in the service area.

• Other Trouble

Symptom	Check
Stop working suddenly.	Check if the modem is inserted properly to Modem slot
	If you install the other software or devices, it may make the PC condition changed.
	Please install the driver again and check it.
The modem is not detected on the Hardware if it is inserted into Modem slot.	Refer to the working condition of the PC. - When you use the Windows 2000, you have to run Launcher.exe by manual - When you use the MAC, refer to Mac Manual supplied separately.