

Wireless Calling System

# User's Manual

---

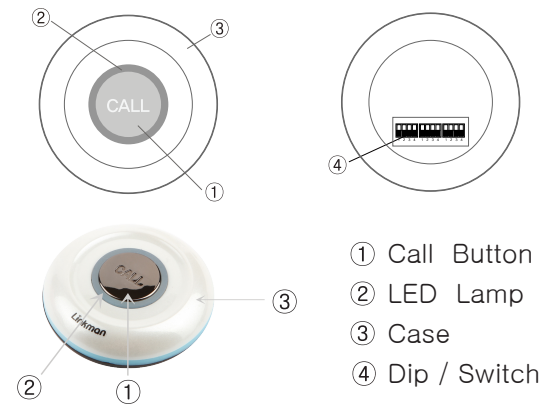
Model : LM – 9000AT



## Contents

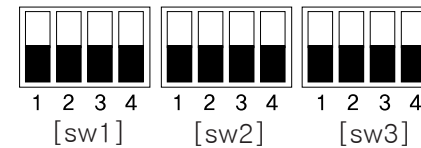
1. System View
2. Setting of Group ID
3. Setting of Call ID
4. Operation Methods
5. Specifications

## 1. System View

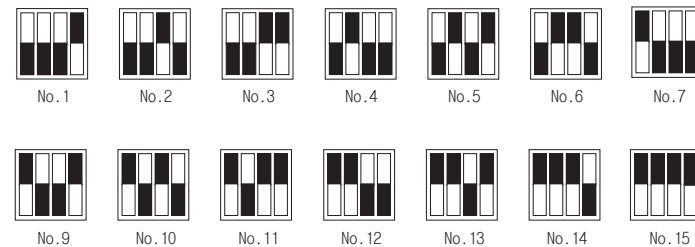


## 2. Setting of Group ID [sw1]

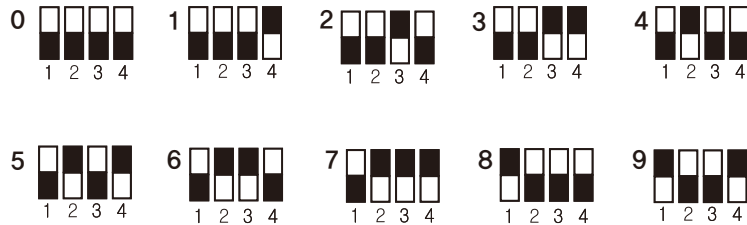
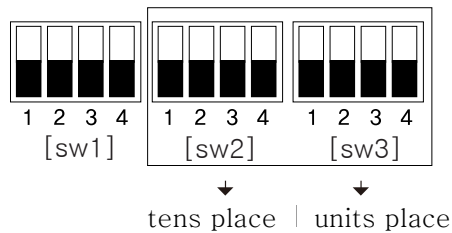
The Transmitter's Group ID must be the same as Receiver's Group



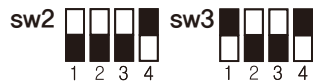
[sw1]



### 3. Setting of Call ID [sw2, sw3] (No.01~99)



ex1) No.19



ex2) No.43



### 4. Operation Methods

- 1) If push to Call SW, call number ID of transmitter will be transmitted to receiver.  
And the Receiver will be indicated call number ID.
- 2) If clear indicated Call number in Receiver,  
push to Clear SW, call number ID of transmitter  
will be clear the call number of Receiver.  
And will be indicated call number ID of Receiver  
will be clear.

### 5. Specifications

- 1) Frequency : 433.92Mhz
- 2) Modulation : AM
- 3) Output : 10mW
- 4) Antenna Type : Loop Antenna
- 5) Power Supply : 12V Battery(23A)
- 6) Dimension : mm
- 7) Net Weight : g

## 6. Warranty

<b>Service with charge</b>  This limited warranty begins on the original date of purchase and covers when the product has defects in normal use of this product. If you want have the warranty service, please send a service request to rm(in our homepage) and we will try to solve your problem as soon as possible.	<b>Service with no charge</b>  1. When warranty period is expired. 2. When you lose the warranty card or do not fill out the form properly. 3. When you caused the defect 4. When the defect is caused by the acts of nature.
---	--

✂

<b>Warranty (Please attach this)</b>					
Please attach this card at the back of the product. Without this, you won't get the warranty service.					
Date of Purchase					
Warranty Period	Warranty is valid from the date you purchase the product for 1 year when purchase the product directly from us. warranty is valid from the date you purchase the product for 1 year and 10 days when you purchase the product from a store.				
S E R V I C E	<table border="1" style="width: 100%; border-collapse: collapse;"> <tr> <td style="width: 15%; padding: 5px; text-align: center;">Service with no charge</td> <td style="padding: 5px;">This limited warranty begins on the original date of purchase and covers when the product has defects in normal use of this product.</td> </tr> <tr> <td style="padding: 5px; text-align: center;">Service with charge</td> <td style="padding: 5px;">                             1. When warranty period is expired.                              2. When the defect is caused by the user, or acts of nature.                         </td> </tr> </table>	Service with no charge	This limited warranty begins on the original date of purchase and covers when the product has defects in normal use of this product.	Service with charge	1. When warranty period is expired. 2. When the defect is caused by the user, or acts of nature.
Service with no charge	This limited warranty begins on the original date of purchase and covers when the product has defects in normal use of this product.				
Service with charge	1. When warranty period is expired. 2. When the defect is caused by the user, or acts of nature.				
Service Request	1. www. QUFIELD.com 2. E-mail : sales@qufield.com				

  
 Cordless Calling System

  
 QUFIELD CO., LTD.

## **\*\* USER INFORMATION**

### **Acknowledging Special Precautions and the FCC Industry Canada Notice**

#### **Cautions**

Modifications not expressly approved by the party responsible for compliance could void the user's authority to operate the equipment.

#### **FCC compliance Information**

When used the This device complies with part 15 of FCC Rules.

Operation is subject to the following two conditions:

1. This device may not cause harmful interference, and
2. This device must accept any interference received.

Including interference that may cause undesired operation.

**FCC ID:V6OLMT9000AT**