



ISO 9001 인증기업



CE MARK 인증기업



정보통신기기 인증기업

MULTIPURPOSE CORDLESS
CALLING SYSTEM

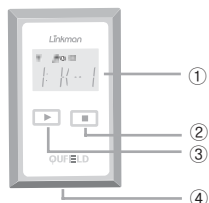
INSTRUCTIONS MANUAL

Model : LM-D100US



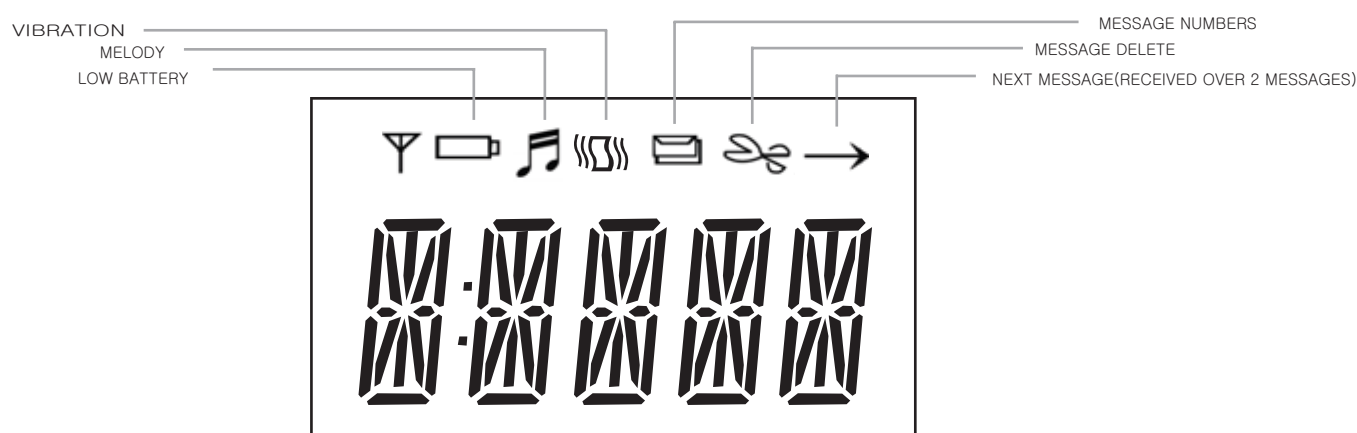
QUFIELD CO.,LTD.

PRODUCT



- ① DISPLAY
- ② BUTTON : Application (press three seconds), moved next digit (message)
- ③ BUTTON : Moved next menu, increased numbers
- ④ ON/OFF s/w

ICON

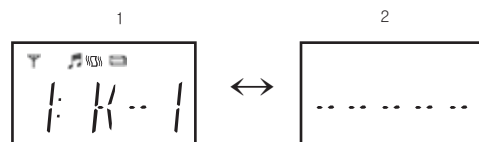


LM-D100US FUNCTIONS

Received 8 message
 Displayed number and alphabet
 Displayed 5 digits alphabet message or numbers
 Delete message
 Low battery
 3 alams : melody/vibration/no sound
 8 melodys : (melody : 1~6 , vibration: 7~8)

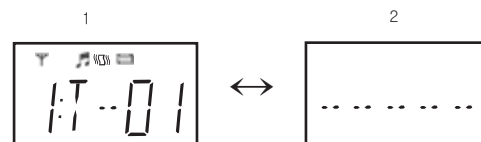
DISPLAY

Call number



1 message (received 8 messages)
 K from (Kitchen) and Desk .Station
 ..1 from number 1 kitchen

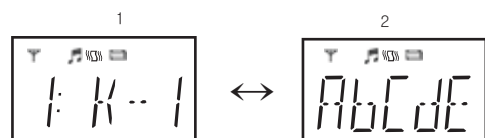
Call from LM-T100 (changed 1 ,2 display)



1 message (received 8 messages)
 T from table
 ..01 from table number 1

Call from LM-T910 (changed 1,2 display)

문자 호출 화면



1 message
 K from kitchen (Kitchen)
 ..1 from number 1 kitchen

Call from LM-T100 (changed 1 ,2 display)

MENU



Off



Exit



Melody setting, vibration



Pager's group setting



LM-T100 Max. 2 groups (1,2)
LM-T910 Max. 2 groups (3,4)



Refer to 00 page



Pager's ID & numbers setting



Call from LM-T100 4numbers(1,2,3,4)
Call from LM-T910 4numbers(5,6,7,8)



Refer to TO 00 page



Save



OK



Finished application, so restarted

* If during passed 1 minute without pressed any keys
and restarted automatically.



Input charger (LM-C100)

. POWER ON

1. S/W moved to right

2. Pressed , any s/w during 2 seconds
and 'beek' sound with find in display



. POWER OFF

1. Pressed , 2 buttons same times during 2 seconds

displayed



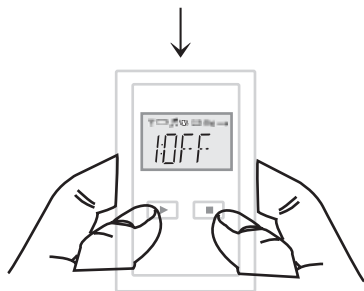
MELODY



OFF → ON



S/W ON
Pressed any key 2 seconds
POWER ON



Press 2 keys
during 2 seconds, so find in display

※ No pressed within 3 seconds, so off automatically



Moved menu 3
setting melody and vibration

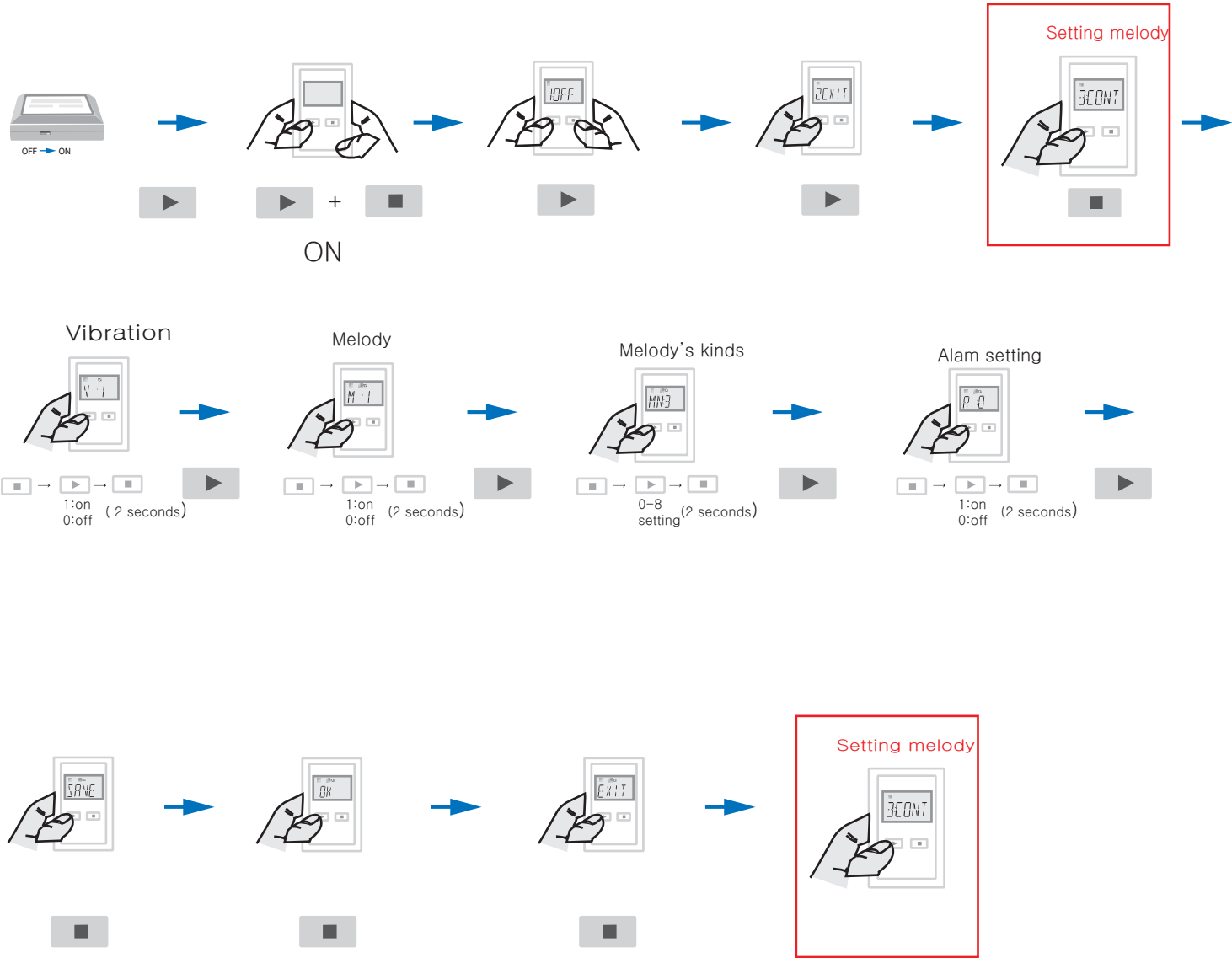


	vibration setting	1: setting 0: cancel
	(길게2초)	
	melody setting	1: setting 0: cancel
	(길게2초)	
	melody number setting	
	(길게3초)	
	0: No sound 1: GALSALABOSE 2: LACUKARACHA 3: SANTALUSIA 4: Beep 1 5: Beep 2 6: Beep 3 7: Vibration 1 8: Vibration 2	
	Remind Function	1:until message confirm alamed 5 times 1 second interval 0: alamed only 1 time
	(길게3초)	
	SAVE	
	OK PRESS MOVED EXIT	
	EXIT	

You must save each menu

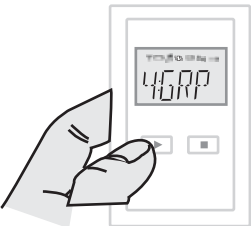
example) Received the message with vibration and SANTALUCHIA melody

- ▶ : Moved next menu,
Increased number
- : Moved next digit,
Application (press 2 seconds)



SETTING GROUP (Call from LM-T910)

- ❌ Group is prevented to received another transmitter's numbers
- ❌ All receivers and transmitters are working with same group
- ❌ All receivers and transmitters are set group



▶
Move menu 4
setting group
■

▶ : Moved next menu,
Increased number

■ : Moved next digit,
Application (presse 2 seconds)



Group setting

SETTING NUMBER : ■ + ▶ Setting group
From LM-T100
0-15 GROUP
SETTING 2: ■
(2 SECONDS)



00 . 00 (~FROM . ~TO)
Set the group number and group range

2 kinds of groups
example) Receiver the number of transmitter
1group to 12group

SETTING NUMBER : ■ + ▶ Setting group
from LM-T910
1-32 GROUP
SETTING 2: ■
(2 SECONDS)



SAVE
EXIT

↓ You must save each menu

GROUP SETTING

HAVE 2 GROUPS

. ONLY 1 GROUP SETTING

(1 Group 1)



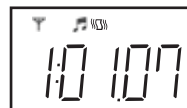
. 2 GROUPS SETTING

(1 AND 3 Group)



. RANGE GROUP SETTING

(1~7 Group)



: Moved next menu,
Increased number



: Moved next digit,
Application (press 2 seconds)

Setting number : →

Setting 2:

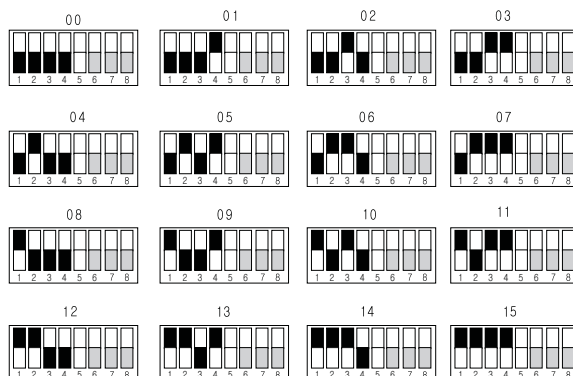
(2 SECONDS)

LM-T100 GROUP NUMBER



GROUP 1~15
MELODY 1~8

DIP S/W

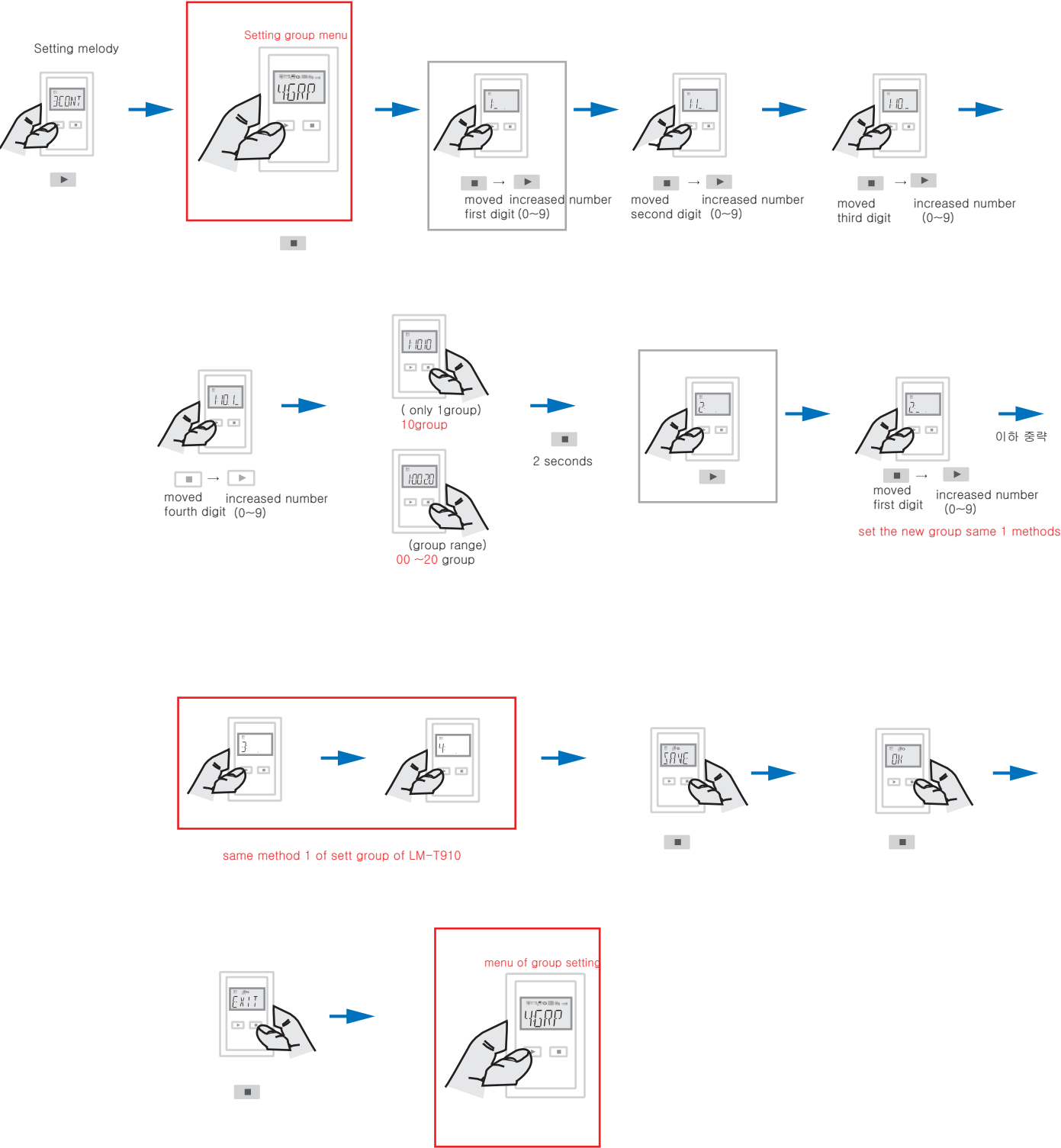


Example) Group setting of LM-T100 about 10

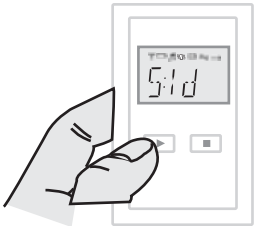
- ▶

: Moved next menu,
increased number
- : Moved next digit,
application (press 2 seconds)
- 00 . 00 (~FROM . ~TO)

Set the group range and group number
of transmitter



number setting (call from LM-T100)



moved menu 5
set the number of pager



: Moved next menu,
Increased number



: Moved next digit,
Application (press 2 seconds)



SETTING NUMBER : →

SETTING :

(press 2 seconds)



00 . 00 (~from . ~to)
SET THE GROUP NUMBER AND GROUP
RANGE.
HAVE 2 GROUPS

example) received number 1 to 12 number



example) received 5 number



SETTING NUMBER : → set number
from LM-T910
SETTING :



save



exit

example)

set the number



(only 25 number) (set the range 0~25)

set number : →

save : (press 2 seconds)

YOU MUST SAVE EACH MENU

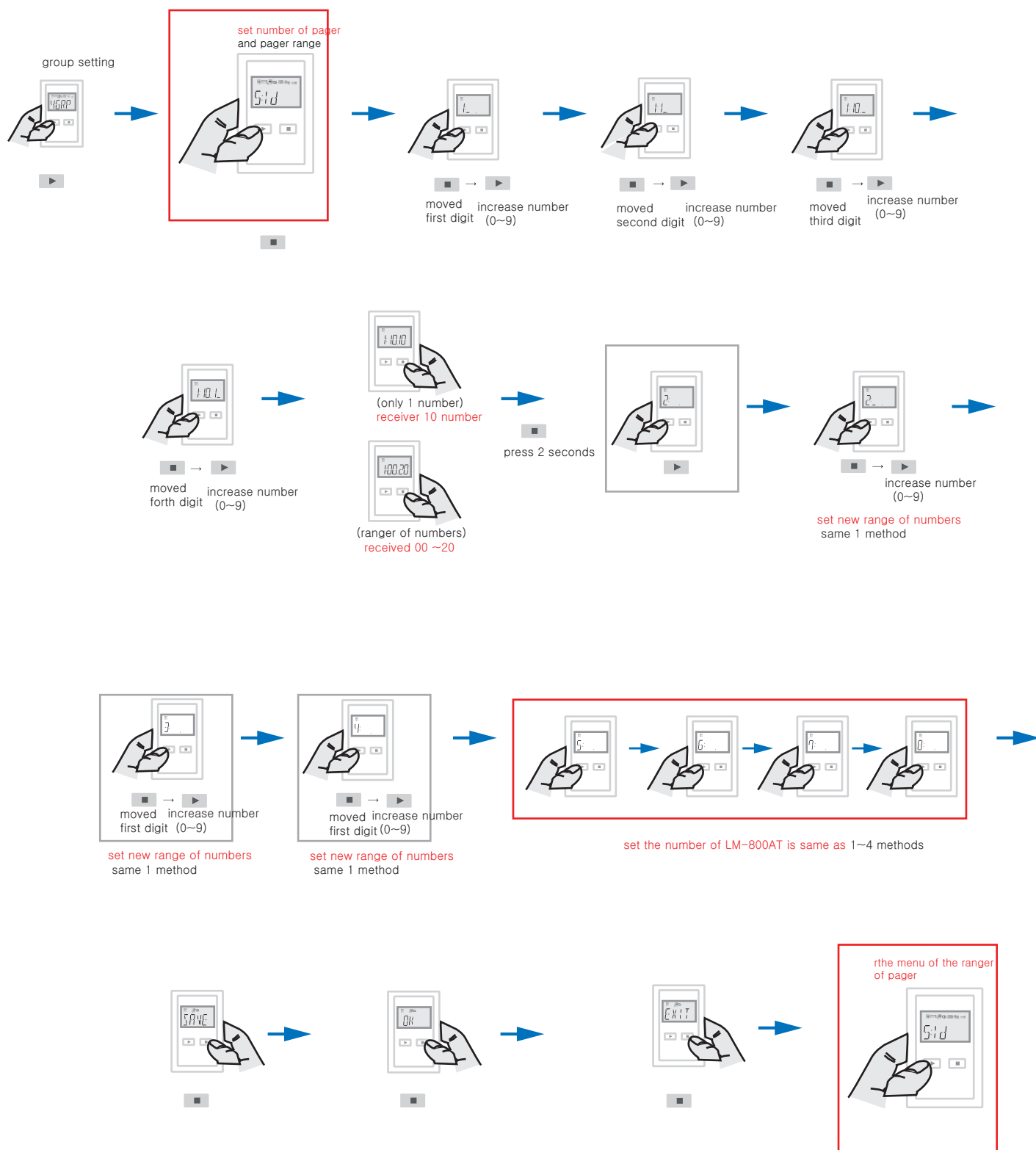
example) 10 number setting from LM-T910

▶ : Moved next menu,
increased number

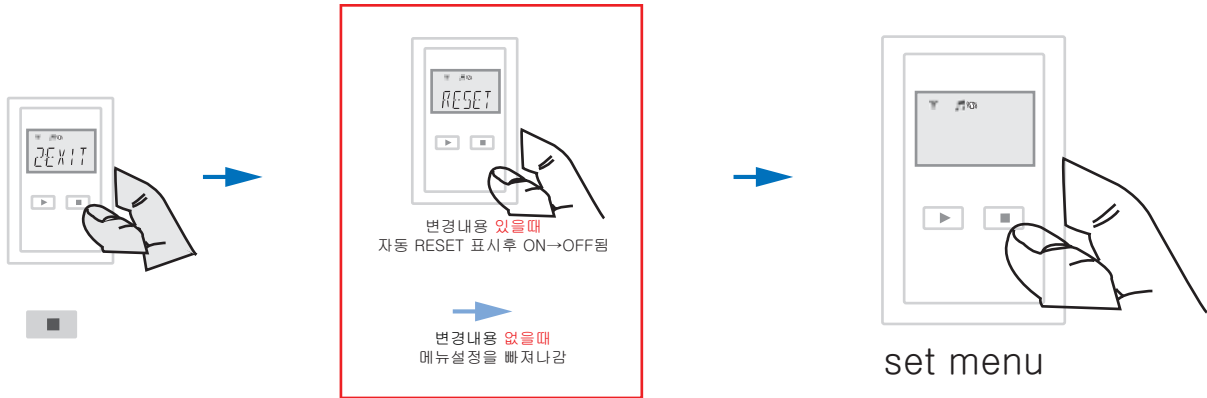
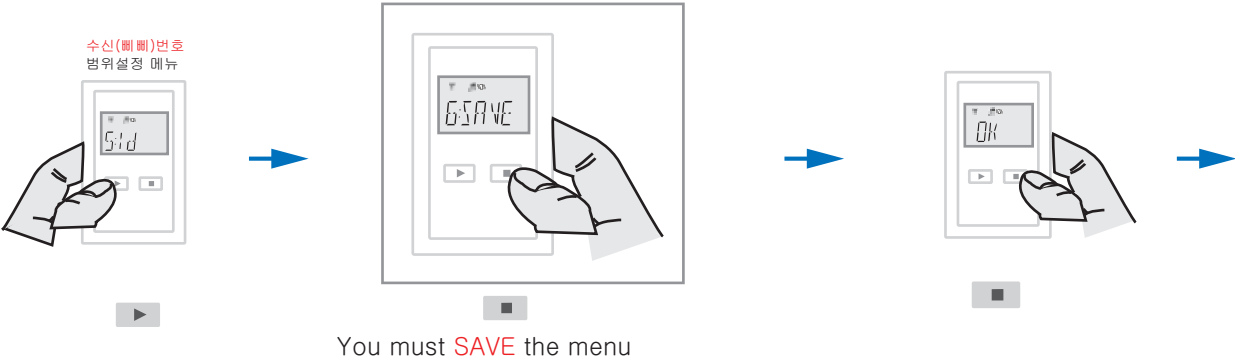
■ : Moved next digit,
Application (press 2 secnds)

00 . 00 (~from . ~to)

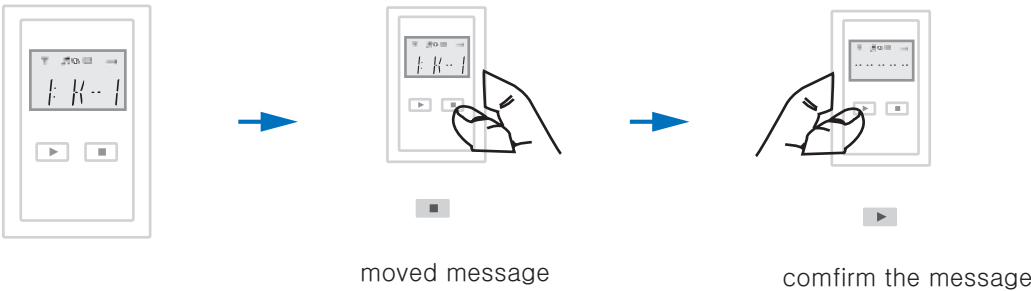
Applicated the number of transmitter, number of pager
range of transmitter and range of pager



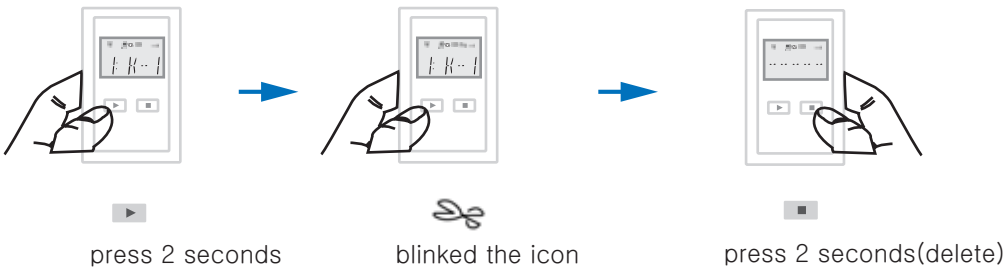
EXIT



confirm the message



delet the message



FCC ID : V6OLMD100US

**** USER INFORMATION**

Acknowledging Special Precautions and the FCC Industry Canada Notice

Cautions

Modifications not expressly approved by the party responsible for compliance could void the user's authority to operate the equipment.

FCC compliance Information

When used the This device complies with part 15 of FCC Rules.

Operation is subject to the following two conditions:

1. This device may not cause harmful interference, and
2. This device must accept any interference received.

Including interference that may cause undesired operation.

Information to User

This equipment has been tested and found to comply with the limits for a Class B digital device, Pursuant to part 15 of the FCC Rules. These limits are designed to provide reasonable protection against harmful interference in a residential installation.

This equipment generates, uses and can radiate radio Frequency energy and, if not installed and used in accordance with the instructions, may cause harmful interference to radio communications.

However, there is no guarantee that interference will not occur in a particular installation. If this equipment does cause harmful interference to radio or television reception, which can be determined by turning the equipment off and on, the user is encouraged to try to correct the interference by one or more of the following measures:

- Reorient or relocate the receiving antenna.
- Increase the separation between the equipment and receiver
- Connect the equipment into an outlet on a circuit different from that to which the receiver is connected.

Consult the dealer or an experienced radio/TV technician for help.



QUFIELD CO.,LTD.

QUFIELD CO.,LTD. Head Office_Factory :
208 Mega Valley, 799 Gwanyang2-dong, Dongahn-gu, Anyang-si, Gye
TEL : 1588-9957