

Peek

Quick Start Guide



Welcome to Peek

With Peek, you'll have access to your personal email anytime, anywhere.

Follow these simple steps and you'll be sending emails before you know it.

And if you have any trouble along the way - our Customer Care team is happy to help. Just give us a call at:

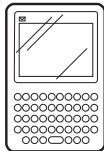
877-677-PEEK (7335)

7:00am - 7:00pm

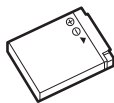
Seven days a week

What's inside the box

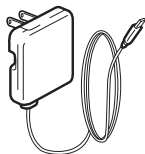
◆ Peek mobile email device



◆ Rechargeable lithium ion battery



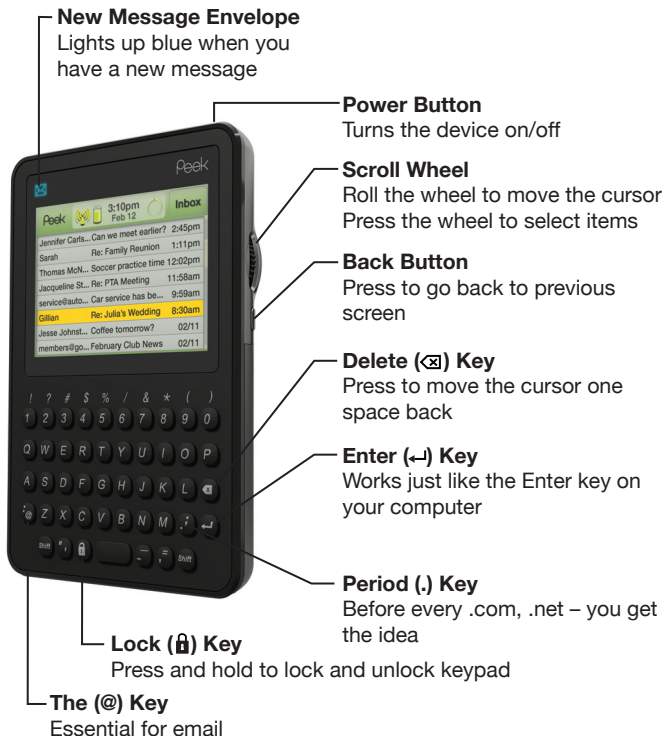
◆ AC charger



◆ Helpful reading
- Quick Start Guide
- Terms of Service

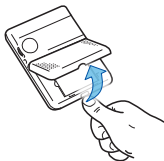


Getting to know your Peek



Insert the battery

Remove the back panel from your Peek.



Insert the battery, and re-attach the back panel.



Turn on your Peek.



And the Welcome Screen will come up.

You're almost there!

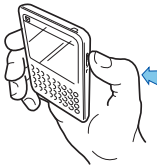


Set up your email

Once you're connected to our network, a screen will pop up providing helpful tips to set up your email.



Review the helpful tips, and then press the Scroll Wheel.



This takes you to the email set up screen.

A screenshot of a handheld device screen. At the top, it says "Peek" with a signal strength indicator, a battery icon, the time "3:10pm", the date "Feb 12", and a "Set Up" button. The main content area says "Use the Scroll Wheel and Keypad to submit and register your email account information." Below this are four input fields labeled "First Name", "Last Name", "Email Address", and "Password". At the bottom are "Submit" and "Help" buttons.

Set up your email

Type your first name in the set up screen.

Don't worry if you make a mistake, just use the Delete (<X>) key.



Peek 3:10pm Feb 12 Set Up

Use the Scroll Wheel and Keypad to submit and register your email account information.

First Name

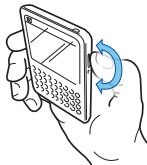
Last Name

Email Address

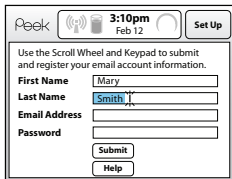
Password

Submit Help

Roll the Scroll Wheel to move down to "Last Name".



Type your last name and scroll down to "Email Address".



Peek 3:10pm Feb 12 Set Up

Use the Scroll Wheel and Keypad to submit and register your email account information.

First Name

Last Name

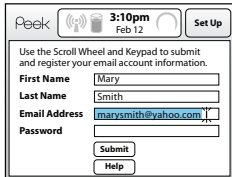
Email Address

Password

Submit Help

Type your complete email address and scroll down to "Password".

Don't forget the @ sign and the .com extension.



Peek 3:10pm Feb 12 Set Up

Use the Scroll Wheel and Keypad to submit and register your email account information.

First Name

Last Name

Email Address

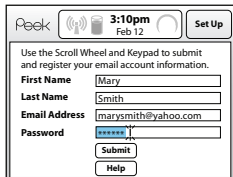
Password

Submit Help

Set up your email

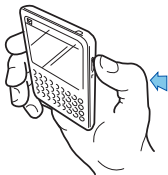
Type your email password.
Your password is case sensitive.

Use the “Shift” key for capital letters.

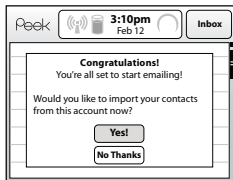


The screenshot shows the 'Set Up' screen on a Peek device. At the top, the status bar displays 'Peek', signal strength, battery level, the time '3:10pm', the date 'Feb 12', and a 'Set Up' button. The main content area has the instruction: 'Use the Scroll Wheel and Keypad to submit and register your email account information.' Below this are four input fields: 'First Name' with 'Mary', 'Last Name' with 'Smith', 'Email Address' with 'marysmith@yahoo.com', and 'Password' with '*****'. At the bottom are two buttons: 'Submit' and 'Help'.

And scroll down to
“Submit” box and press
the Scroll Wheel.



It'll take a few seconds, and
you'll get a note confirming
that you're done.



The screenshot shows the 'Congratulations!' screen on a Peek device. The status bar at the top shows 'Peek', signal strength, battery level, the time '3:10pm', the date 'Feb 12', and an 'Inbox' button. The main content area has the text: 'Congratulations! You're all set to start emailing! Would you like to import your contacts from this account now?'. At the bottom are two buttons: 'Yes!' and 'No Thanks'.

Download email contacts

Select “Yes!” to download email contacts, or “No Thanks” to do it later.

Why now?

It’s much easier to send emails if your contacts are stored in your Peek.

What happens?


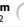
Your Peek downloads a copy of your email contacts.

How long does this take?

Just a few seconds in most cases.

Emailing with Peek

Because Peek is simply email, everything begins with your Inbox.

Peek	 3:10pm Feb 12	 Inbox
Jennifer Carls...	Can we meet earlier?	2:45pm
Sarah	Re: Family Reunion	1:11pm
Thomas McN...	Soccer practice time	12:02pm
Jacqueline St...	Re: PTA Meeting	11:58am
service@auto...	Car service has be...	9:59am
Gillian	Re: Julia's Wedding	8:30am
Jesse Johnst...	Coffee tomorrow?	02/11
members@go...	February Club News	02/11



Turns green when connected to the network



Indicates level of battery power



Circles when an action is being processed

The Scroll Wheel



Highlights emails. Press the wheel to open your emails.



Also brings up a function menu. Press the wheel to display a menu which allows you to zip around and do all kinds of things.

The Back Button...is your buddy



Press it and you'll always go back one screen.



Press it a couple of times and you'll always come back to your Inbox – you're never lost.

Your first email / PIN

Hooray! Your first email will be from us. In the email you'll find a four-digit PIN. It's important.

Use the PIN to login at www.getpeek.com to manage your account. You can register your credit card, or change your PIN to a number you'll actually remember.

Your PIN is one of the ways we protect your identity and make sure someone else isn't pretending to be you!

Compliance Information

Radio Frequency (RF) Energy

The Peek device is a radio transmitter and receiver. When it is on, it receives and sends out RF energy. In August 1996, the U.S. Federal Communications Commission (FCC) adopted RF exposure guidelines with safety levels for hand-held wireless devices. These guidelines are consistent with the safety standards previously set by both U.S. and international standards bodies in the following reports:

- ANSI C95.1 (American National Standards Institute, 1992)
- NCRP Report 86 (National Council on Radiation Protection and Measurements, 1986)
- ICNIRP (International Commission on Non-Ionizing Radiation Protection, 1996).

Your device complies with the standards set by these reports and the FCC guidelines.

In order to comply with FCC RF exposure guidelines, users must use a bodyworn accessory that contains no metal (snaps, clips, etc.) and provides at least 2.2cm of separation between the users body and the unit. Do NOT use the device in a manner such that it is in direct contact with the body (i.e., on the lap or in a breast pocket). Such use will likely exceed FCC RF safety exposure limits. See www.fcc.gov/oet/rfsafety/ for more information on RF exposure safety.

Consumer Information on Specific Absorption Rate (SAR)

This device meets the government's requirements for exposure to radio waves. Your wireless device is a radio transmitter and receiver. It is designed and manufactured not to exceed the emission limits for exposure to RF energy set by the FCC of the U.S. Government. These limits are part of comprehensive guidelines and establish permitted levels of RF energy for the general population. The guidelines are based on standards that were developed by independent scientific organizations through periodic and thorough evaluation of scientific studies. The standards include a substantial safety margin designed to assure the safety of all persons, regardless of age and health.

The exposure standard for wireless devices employs a unit of measurement known as the Specific Absorption Rate, or SAR. The SAR limit set by the FCC is 1.6 W/kg, except for hands and feet in which the SAR limit set by the FCC is 4.0W/kg. Tests for SAR are conducted using standard operating positions specified by the FCC with the device transmitting at its highest certified power level in all tested frequency bands. Although SAR is determined at the highest certified power level, the actual SAR level of the device while operating can be well below the maximum value. Because the device is designed to operate at multiple power levels to use only the power required to reach the network, in general, the closer you are to a wireless base station antenna, the lower the power output.

Before a device model is available for sale to the public, it must be tested and certified to the FCC that it does not exceed the limit established by the government-adopted requirement for safe exposure. The tests are performed in positions and locations as required by the FCC for each model. The highest tested SAR value for this model device when worn on the body, in accordance with this Terms of Service, is 1.15W/kg.

The FCC has granted an Equipment Authorization for this model device with all reported SAR levels evaluated as in compliance with the FCC RF emission guidelines. SAR information on this model device is on file with the FCC and can be found under the Display Grant section of <http://www.fcc.gov/oet/fccid> after searching on FCC ID V6LPEEK0001 Additional information on Specific Absorption Rates (SAR) can be found on the Cellular Telecommunications Industry Association (CTIA) website at <http://www.ctia.org>.

FCC Compliance Statement (USA)

This device complies with part 15 of the FCC rules. Operation is subject to the following two conditions: (1) This device may not cause harmful interference, and (2) this device must accept any interference received, including interference that may cause undesired operation. Changes or modifications aren't expressly approved by the party responsible for compliance could void the user's authority to operate the equipment.

This equipment has been tested and found to comply with the limits for a Class B digital device, pursuant to Part 15 of the FCC rules. These limits are designed to provide reasonable protection against harmful interference in a residential installation. This equipment generates, uses, and can radiate radio frequency energy and, if not installed and used in accordance with the instructions, may cause harmful interference to radio communications. However, there is no guarantee that interference will not incur in a particular installation. If this equipment does cause harmful interference to radio or TV reception, which can be determined by turning the equipment on and off, the user is encouraged to try to correct the interference by one or more of the following measures:

- Reorient or relocate the receiving antenna.
- Increase the separation between the equipment and receiver.
- Connect the equipment into an outlet on a circuit different from that to which the receiver is connected.
- Consult the dealer or an experienced radio or television technician for help.

Safety Information

Please read these safety and operation instructions before using the Peek device or any accessories provided with the device. When using this product, the safety precautions below must be taken to avoid possible legal liabilities and damages. Retain and follow all product safety and operating instructions.

Electrical Safety

1. Charge the Peek device using only the charging accessory provided or specifically approved by Peek Inc., for use with this device. Use of any other accessory might invalidate any warranty provided with the device and might be dangerous.
2. Use the charging accessories provided with the device or any other approved charging accessories only from the type of power source indicated on the marking label. Before using any power supply, verify that the voltage is in accordance with the voltage printed on the power supply.
3. Do not overload wall outlets and extension cords as this might result in a risk of fire or electric shock. To reduce the risk of damage to the cord or the plug, pull the plug rather than the cord when you disconnect the charging accessory from the wall outlet.
4. Unplug charging accessories during lightning storms or when unused for long periods of time.
5. Do not use the charging accessories outside or in any area exposed to the elements.

Battery Safety and Disposal

1. The Peek device contains a removable lithium-ion battery. Do not dispose of either the device or the lithium-ion battery in a fire. Dispose of the lithium-ion battery in accordance with the laws and regulations governing disposal of such cell types.
2. The lithium-ion battery might present a fire or chemical burn hazard if mistreated. Do not disassemble, crush or puncture the lithium-ion battery. Do not expose the battery to temperatures higher than 60°C (140°F). Do not allow metal objects to contact the battery terminals.
3. Use only the lithium-ion battery that Peek specifies for use with your particular model. Using any other lithium-ion battery might invalidate any warranty provided with the device and might present a risk of fire or explosion.

Device Disposal

1. The Peek device should not be placed in household waste bins. Please check local regulations for information on the disposal of electronic products in your area.

Antenna Care

1. Use only the supplied or an approved replacement antenna. Unauthorized antennas, modifications, or attachments could damage the device and may violate Federal Communications Commission (FCC) regulations.

Driving Safety

1. Check the laws and regulations regarding the use of wireless devices in the areas where you drive. Always obey them. Also, if using the Peek device in your car, please use the following minimum guidelines:
 - a. Give your full attention to driving; driving safety is your first responsibility.
 - b. Pull off the road and park before checking your email.
2. Peek recommends that you do not use the Peek device while driving.

Accessories

1. Use only those accessories approved by Peek. Using any accessories not approved by Peek for use with this particular Peek device model might invalidate any warranty applicable to the device, might result in the non-operation of the device, and might be dangerous.

Operating and Storage Temperatures

1. Keep the Peek device or device accessories away from excessive moisture and extreme temperatures. Do not leave the Peek device, device accessories or the lithium-ion battery inside a vehicle or in places where the temperature may exceed 60°C (140°F), such as on a car dashboard, window sill, or behind a glass that is exposed to direct sunlight or strong ultraviolet light for extended periods of time. This may damage the product, overheat the battery, or pose a risk to the vehicle.
2. Please follow the following operating and storage temperatures listed below:
 - a. Device and charger operating: 0 to 50°C
 - b. Device and charger storage: -10 to 60°C

Interference with Electronic Equipment

1. Most modern electronic equipment is shielded from RF signals. However, certain electronic equipment might not be shielded against the RF signals from the Peek device.
 - a. Pacemakers: Consult a physician or the manufacturer of your pacemaker if you have any questions regarding the effect of RF signals on your pacemaker. If you have a pacemaker, verify that you are using the device in accordance with the safety requirements associated with your particular pacemaker.

- b. Hearing aids: Some digital wireless devices may interfere with some hearing aids. In the event of such interference, consult your service provider or contact the manufacturer of your hearing aid to discuss alternatives.
- c. Aircraft: Federal Aviation Administration (FAA) and FCC regulations prohibit using wireless devices while in the air. Turn the Peek device off before boarding the aircraft. The effect of using the Peek device in an aircraft is unknown. Such use might affect aircraft instrumentation, communication and performance, might disrupt the network, might otherwise be dangerous to the operation of the aircraft, and might be illegal.

Dangerous Areas

- 1. Turn the Peek device off when in any area with a potentially explosive atmosphere, and obey all signs and instructions. Sparks in such areas could cause an explosion or fire resulting in bodily injury or even death.
- 2. Areas with a potentially explosive atmosphere are often, but not always, clearly marked. They include fueling areas such as gasoline or petrol stations; below deck on boats, fuel or chemical transfer or storage facilities; vehicles using liquefied petroleum gas, such as propane or butane; areas where the air contains chemicals or particles, such as grain, dust, or metal powders; and any other area where you would normally be advised to turn off your vehicle engine.

Service

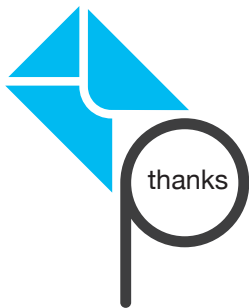
- 1. Only qualified service personnel should perform repairs to the Peek device.
- 2. Do not attempt to disassemble the device or any charging accessory.
- 3. Unplug the device from the electrical outlet and refer servicing to an authorized service technician or provider under the following conditions:
 - a. Liquid has been spilled or an object has fallen into the product.
 - b. The product has been exposed to rain or water.
 - c. The product has been dropped or damaged.
 - d. There are noticeable signs of overheating.
 - e. The product does not operate normally when you follow the operating instructions.

Cleaning

- 1. Do not use liquid, aerosol cleaners, or solvents on or near the device or device accessory. Clean only with a soft dry cloth. Unplug any charging accessories from the electrical outlet before cleaning either the device or the charging accessory.

Liquids and Foreign Objects

1. Never push objects of any kind into the Peek device or device accessories through openings as this action might short circuit parts and cause a fire or electric shock. Do not use the device or device accessories near water. Never spill liquid of any kind on the device or device accessories.



We want to hear from you! Send your comments, suggestions or your own personal Peek story to feedback@getpeek.com.

Thanks,
The Peek Team

Peek

www.getpeek.com

Copyright © 2008
PK-QSG-001