

Guangzhou Chiyuan Electronic Co.,Ltd.

Date: 2011-06-18

Subject: Authorization for adding family models

To whom it may concern,

Statement

Product is: 6CH/4CH Radio Control

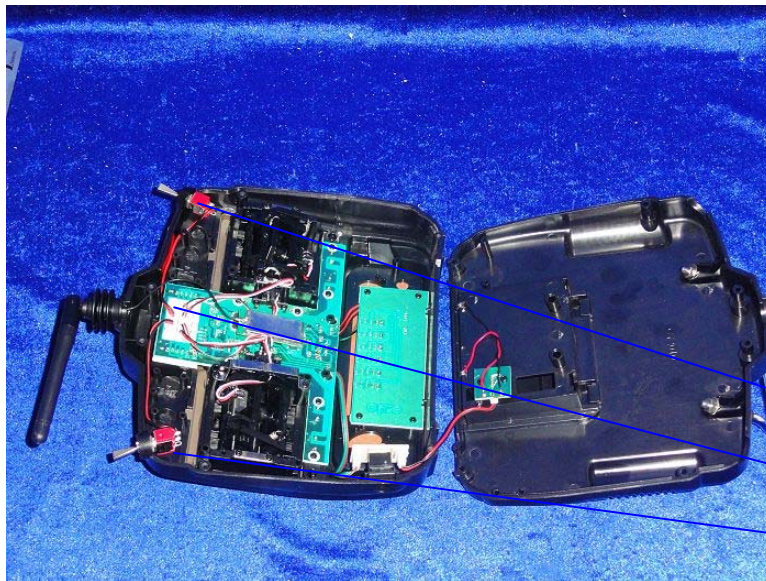
FCC ID: V6KX-46

Basic model is: X-6

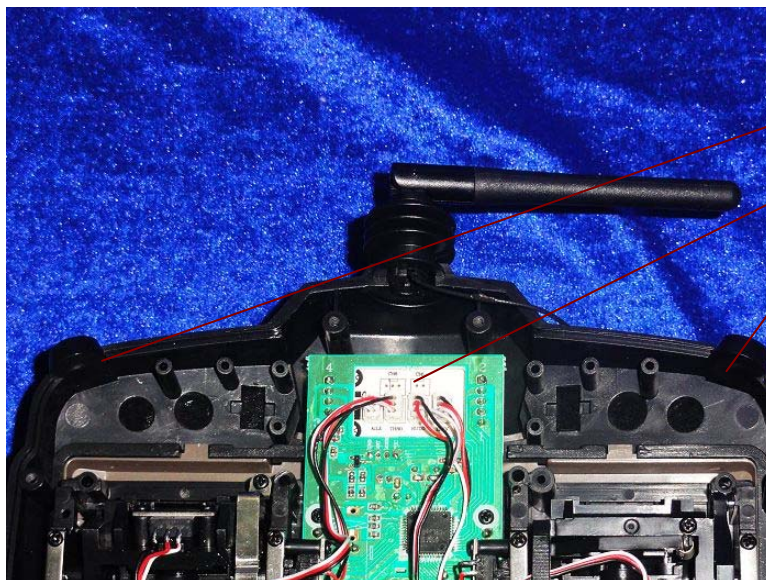
Additional models are: X-4

X-4 and X-6 are the X Series models, X-4 is a 4channel remote control equipment, X-6 is a 6channel remote control equipment, X-4 and X-6 are used the same program, all board use the same hardware, all software are the same, while the X-4 is a simplified version of X-6, reducing two panel switch, the related receiver reduce two output ports, in other words, X-4 also has six channels, just the peripheral not access the back 2channel s, the users just only use four of the channels.

We hereby confirm that these models are identical in, layout, schematics.



X-6 has two more control switch than X-4.



Yours sincerely,

Signature:

Fen Zhang

Company Name: Guangzhou Chiyuan Electronic Co.,Ltd.