

FCC TEST REPORT

Under
FCC 15 Subpart C, Paragraph 15.239: 2004

Prepared For :

Dongguan Xianghui Electronic Co., Ltd.

Xiangxi Industrial Zone, Shipai Town, Dongguan, Guangdong, China.

FCC ID: V69DS-FM2098

EUT: Wireless Headphone

Model: DS-FM2098

April 9, 2008

Report Type: Original Report

Test Engineer: Jacky Huang

Test Date: March 28, 2008



Review By: _____
Apollo Liu / Manager

TABLE OF CONTENTS

1. General Information.....	3
1. 1 Notes.....	3
1. 2 Testing Laboratory	3
1. 3 Details of Applicant	3
1. 4 Application Details.....	3
1. 5 Test Item.....	3
1. 6 Test Standards.....	3
2. Technical Test.....	4
2. 1 Summary of Test Results	4
3. EUT Modifications.....	4
4. Conducted Power Line Test.....	5
4. 1 Test Equipment	5
4. 2 Test Procedure	5
4. 3 Test Setup.....	5
4. 4 Configuration of the EUT.....	6
4. 5 EUT Operating Condition.....	7
4. 6 Conducted Power Line Emission Limits	7
4. 7 Conducted Power Line Test Result.....	8
5. Radiated Emission Test.....	10
5. 1 Test Equipment	10
5. 2 Test Procedure	10
5. 3 Radiated Test Setup.....	10
5. 4 Configuration of the EUT.....	11
5. 5 EUT Operating Condition.....	11
5. 6 Radiated Emission Limit	11
5. 7 Radiated Emission Test Result.....	12
6. Band Edge.....	13
6. 1 Test Equipment	13
6. 2 Test Procedure	13
6. 3 Radiated Test Setup.....	13
6. 4 Configuration of The EUT.....	14
6. 5 EUT Operating Condition.....	14
6. 6 Band Edge FCC 15.239 Limit.....	14
6. 7 Band Edge Test Result.....	14
7. Antenna Requirement.....	15
8. Photos of Testing.....	16
8. 1 EUT Test Photographs.....	16
8. 2 EUT Detailed Photographs	17
9. FCC ID Label	25
10. Test Equipment.....	26

1. General Information

1.1 Notes

The test results of this report relate exclusively to the test item specified in 1.5. The KMO Lab does not assume responsibility for any conclusions and generalizations drawn from the test results with regard to other specimens or samples of the type of the equipment represented by the test item. The test report may only be reproduced or published in full. Reproduction or publication of extracts from the report requires the prior written approval of the KMO Lab.

1.2 Testing Laboratory

SinTek Laboratory Co., Ltd.

No.7, Xinshidai Industrial, Guantian Village, Shiyao Town, Bao'an District, Shenzhen, Guangdong China..

Tel: +86 755 27608353 Fax: +86 755 27608359

Site on File with the Federal Communications Commission – United States

Registration Number: 963441

1.3 Details of Applicant

Name : Dongguan Xianghui Electronic Co., Ltd.
Address : Xiangxi Industrial Zone, Shipai Town, Dongguan, Guangdong, China.
Contact : Liao Yunzhong / Quality Manager
Tel : 0769-86516663
Fax : 0769-86512913

1.4 Application Details

Date of Receipt of Application : March 21, 2008
Date of Receipt of Test Item : March 28, 2008
Date of Test : March 28~April 9, 2008

1.5 Test Item

Manufacturer : Same Applicant
Address : Same Applicant
Trade Name : N/A
Model No. : DS-FM2098, DS-FM2098A, DS-FM198, DS-FM198A, DS-FM1082, DS-FM1083, DS-FM3098, DS-FM4198, DS-S242-02A, DS-S242-2HA, DS-RF863AA, DS-RF863BA, DS-IR0518A, DS-IR0618A, DS-AH118A
Description : Wireless Headphone

Additional Information

Frequency : 88.3MHz
Maximum Range : N/A
Number of Channels : 1
Transmitter Antenna : The transmitter's antenna is on PCB layout
Power Supply : DC 5V
Current Consumption : N/A

1.6 Test Standards

FCC 15 Subpart C, Paragraph 15.239: 2004
--

Note: All radiated measurements were made in all three orthogonal planes. The values reported are the maximum values.

2. Technical Test

2.1 Summary of Test Results

The EUT has been tested according to the following specifications:

Standard	Test Type	Result	Notes
FCC Part 15, Paragraph 15.203	Antenna Requirement	PASS	Complies
FCC Part 15, Paragraph 15.207	Conducted Test	PASS	Complies
FCC Part 15 Subpart C Paragraph 15.239 Limit	Field Strength of Fundamental	PASS	Complies
FCC Part 15, Subpart C Paragraph 15.239 Limit & Paragraph 15.209	Radiated Test	PASS	Complies
FCC Part 15 Subpart C Paragraph 15.239 Limit	Measured Bandwidth	PASS	Complies.

3. EUT Modifications

No modification by SinTek Laboratory Co., Ltd.

4. Conducted Power Line Test

4.1 Test Equipment

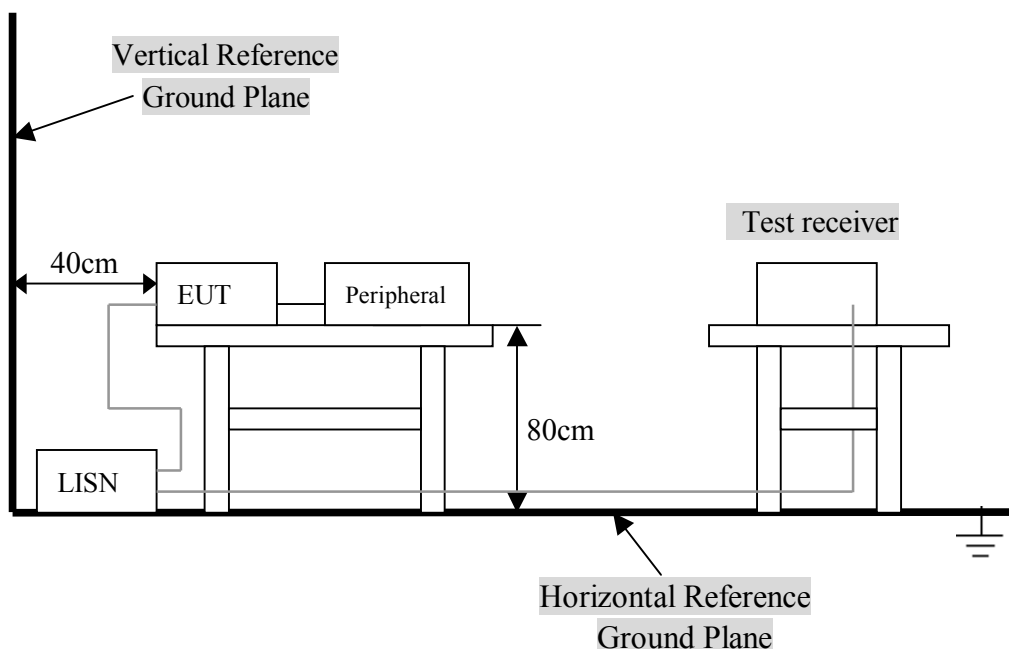
Please refer to Section 10 this report.

4.2 Test Procedure

The EUT and simulators are connected to the main power through a line impedance stabilization network (L.I.S.N.). This provides a 50 ohm/50uH coupling impedance for the measuring equipment. The peripheral devices are also connected to the main power through a LISN that provides a 50ohm/50uH coupling impedance with 50ohm termination.

Both sides of A.C. line are checked for maximum conducted interference. In order to find the maximum emission., the relative positions of equipment and all of the interface cables must be changed according to ANSI C63.4:2003 on conducted measurement. Conducted emissions were invested over the frequency range from 0.15MHz to 30MHz using a receiver bandwidth of 9kHz.

4.3 Test Setup



For the actual test configuration, Please refer to the related items – Photos of Testing.

4. 4 Configuration of the EUT

The EUT was configured according to ANSI C63.4-2003. EUT was used DC5V. The operation frequency is from 88.1MHz~107.9MHz. Enable the signal transmitted from the external antenna from EUT to receiver. All interface ports were connected to the appropriate peripherals. All peripherals and cables are listed below.

Note:

- 1) Below 1GHz, the channel low, middle, high were pre-tested, The channel middle, worst case one, was chosen for conducted and radiated emission test.
- 2) Above 1GHz, the channel low, middle, high were tested individually.

Test with a iPod Player / Notebook as the sound source for the EUT.

A. EUT

Device	Manufacturer	Model #	FCC ID
Wireless Headphone	Dongguan Xianghui Electronic Co., Ltd.	DS-FM2098	V69DS-FM2098

B. Internal Devices

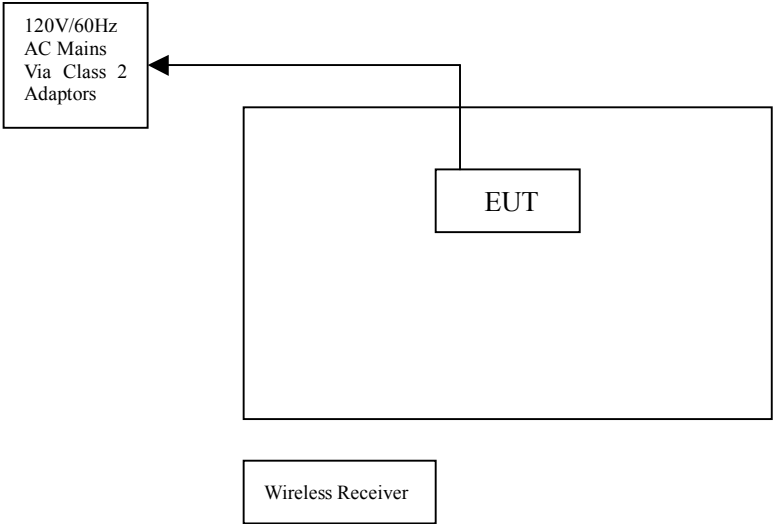
Device	Manufacturer	Model #	FCC ID
N/A			

C. Peripherals

Device	Manufacturer	Model # Serial #	FCC ID/ DoC	Cable
Printer	HP	HP930C	DoC	1.5m unshielded power cord 1.2m unshielded data cable.
Modem	GVC	N/A	DoC	1.5m unshielded power cord 1.2m unshielded data cable.
Notebook	DELL	PP10L	DoC	1.5m unshielded power cord
PC	Dell	2400n	DoC	1.5m unshielded power cord

4. 5 EUT Operating Condition

- Operating condition is according to ANSI C63.4 - 2003.
- A. Setup the EUT and simulators as shown on follow.
 - B. Enable RF signal and confirm EUT active.
 - D. Modulate output capacity of EUT up to specification.



4. 6 Conducted Power Line Emission Limits

FCC Part 15 Paragraph 15.207 (dBuV)		
Frequency Range (MHz)	Class A QP/AV	Class B QP/AV
0.15 – 0.5	79/66	66-56/56-46
0.5 – 5.0	73/60	56/46
5.0 - 30	73/60	60/50

Note: In the above table, the tighter limit applies at the band edges.

4. 7 Conducted Power Line Test Result

Product	: Wireless Headphone	Test Mode	: CH1
Test Item	: Conducted Emission Data	Temperature	: 25 °C
Test Voltage	: DC 5V (Power by Class 2 Adaptor)	Humidity	: 56%RH
Test Result	: PASS		

The frequency spectrum from 0.15 MHz to 30 MHz was investigated. All readings are quasi -peak values with a resolution bandwidth of 9 KHz.

- Temperature : 26 °C
- Humidity : 53 % RH

CH4: 2468MHz

FCC Part 15 Paragraph 15.207							
Frequency (MHz)	Emission (dBuV)		LINE/ NEUTRAL	Limit (dBuV)		Margin (dB)	
	QP	AV		QP	AV	QP	AV
0.162	21.83	14.95	LINE	65.36	55.36	-43.53	-40.41
0.166	21.17	19.54	NEUTRAL	65.16	55.16	-43.99	-35.62
0.674	17.23	12.39	LINE	56.00	46.00	-38.77	-33.61
0.242	22.09	18.44	NEUTRAL	62.03	52.03	-39.94	-33.59
16.230	22.07	18.37	LINE	60.00	50.00	-37.93	-31.63
16.230	20.97	19.33	NEUTRAL	60.00	50.00	-39.03	-30.67

Note: NF = No Significant Peak was Found.

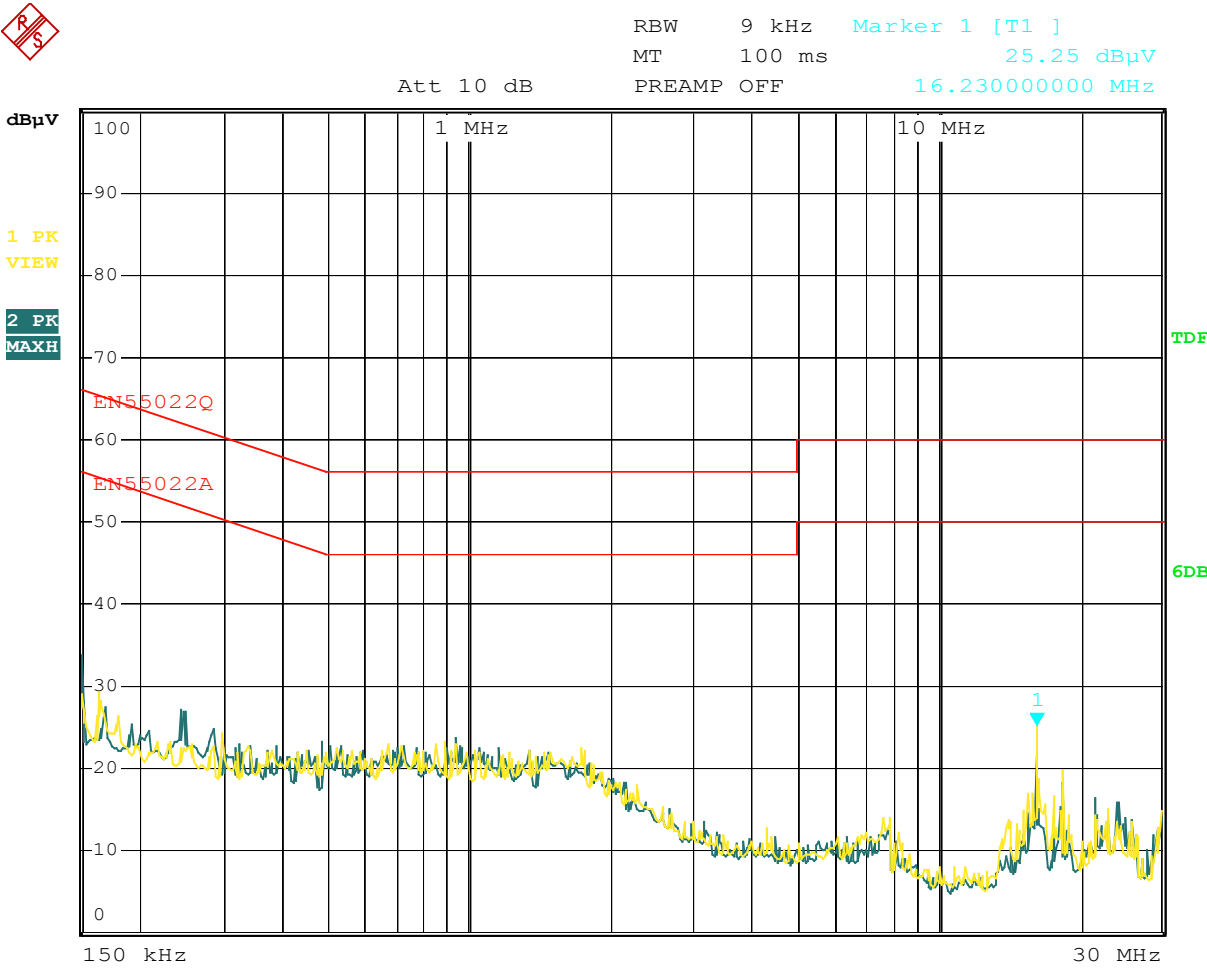
Note:

- 1.Uncertainty in conducted emission measured is <+/- 2dB.
- 2.The emission levels of other frequencies were very low against the limit.
- 3.All Reading Levels are Quasi-Peak and Average value.
- 4.Emission = Meter Reading + Factor; Factor = Insertion Loss + Cable Loss.
- 5.Margin Value = Emission Level - Limit Value.

Conducted Emission

EN55022

EUT: Wireless Headphone, M/N: DS-FM2098
Manufacturer: Dongguan Xianghui Electronic Co., Ltd.
Operating Condition: Transmitter
Test Site: SinTek Laboratory
Operator: Jacky Huang
Test Specification: LINE&NEUTRAL
Comment:



Date: 8.APR.2008 12:22:35

5. Radiated Emission Test

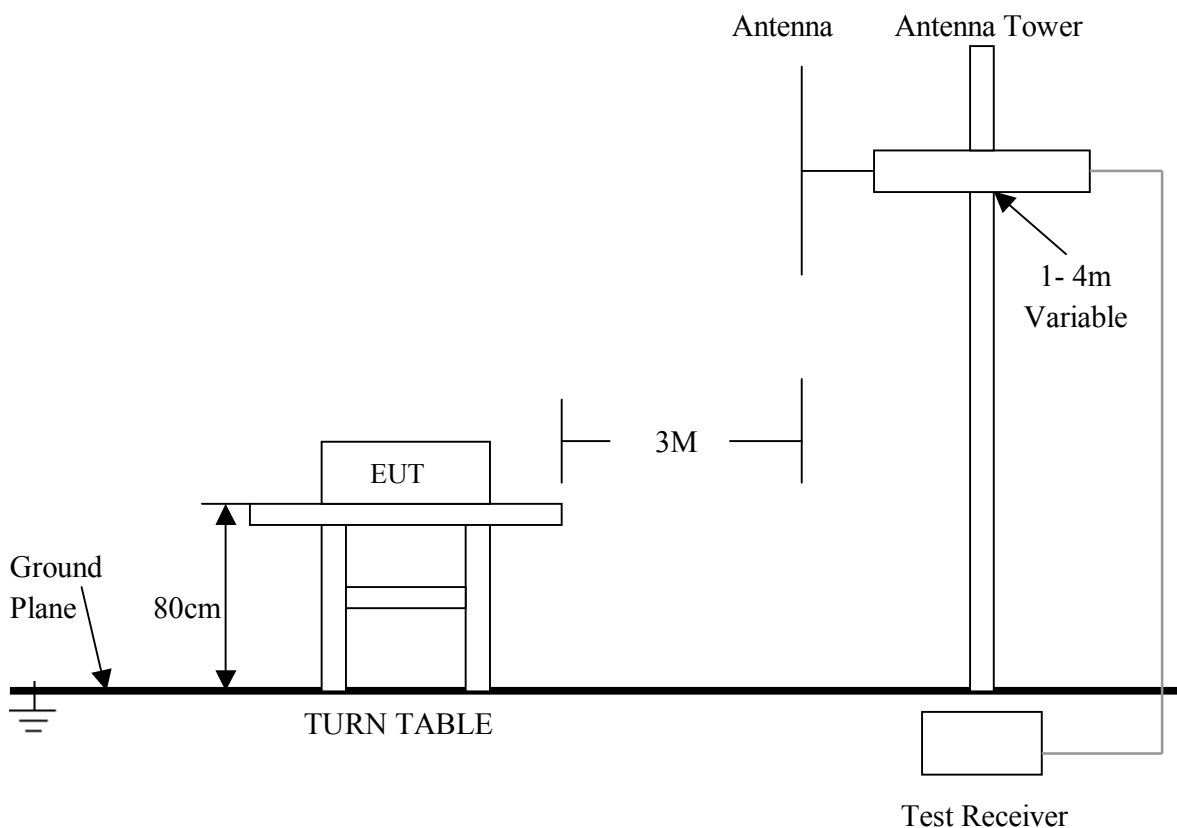
5.1 Test Equipment

Please refer to Section 10 this report.

5.2 Test Procedure

1. The EUT was tested according to ANSI C63.4 - 2003.
2. The EUT, peripherals were put on the turntable which table size is 1m x 1.5 m, table high 0.8 m. All set up is according to ANSI C63.4-2003.
3. The frequency spectrum from 30 MHz to 1 GHz was investigated. All readings from 30 MHz to 1 GHz are quasi-peak values with a resolution bandwidth of 120 KHz. All readings are above 1 GHz , peak values with a resolution bandwidth of 1 MHz . Measurements were made at 3 meters.
4. The antenna high is varied from 1 m to 4 m high to find the maximum emission for each frequency.
5. Maximizing procedure was performed on the six (6) highest emissions to ensure EUT compliance is with all installation combinations. All data was recorded in the peak detection mode. Quasi-peak readings was performed only when an emission was found to be marginal (within -4 dB of specification limit), and are distinguished with a "QP" in the data table.
6. The antenna polarization: Vertical polarization and Horizontal polarization.

5.3 Radiated Test Setup



For the actual test configuration, please refer to the related items – Photos of Testing.

5.4 Configuration of the EUT

Same as section 4.4 of this report

5.5 EUT Operating Condition

Same as section 4.5 of this report.

5.6 Radiated Emission Limit

All emission from a digital device, including any network of conductors and apparatus connected thereto, shall not exceed the level of field strength specified below :

A. FCC Part 15 Subpart C Paragraph 15.239 Limit

Fundamental Frequency (MHz)	Field Strength of Fundamental (3m)	
	Peak (dBuV/m)	Average (dBuV/m)
88 to 108	67.96	47.96

- Note:**
- (1) RF Voltage (dBuV) = 20 log RF Voltage (uV)
 - (2) Distance refers to the distance in meters between the measuring instrument antenna and the closed point of any part of the device or system.
 - (3) The emission limit in this paragraph is based on measurement instrumentation employing an average detector. Measurement using instrumentation with a peak detector function, corresponding to 20dB above the maximum permitted average limit.

B. Frequencies in restricted band are complied to limit on Paragraph 15.209.

Frequency (MHz)	Distance (m)	Field Strength (dBuV/m)
30 - 88	3	40.0
88 - 216	3	43.5
216 - 960	3	46.0
ABOVE 960	3	54.0

- Note:**
- (1) RF Voltage (dBuV) = 20 log RF Voltage (uV)
 - (2) In the Above Table, the tighter limit applies at the band edges.
 - (3) Distance refers to the distance in meters between the measuring instrument antenna and the closed point of any part of the device or system.

5. 7 Radiated Emission Test Result

A. Fundamental Radiated Emission Data - FCC 15.239

Product : Wireless Headphone Test Mode : CH1
 Test Item : Fundamental Radiated Emission Data Temperature : 25 °C
 Test Voltage : DC 5V (Power by Adapter) Humidity : 56%RH
 Test Result : **PASS**

CH Low

Freq. (MHz)	Emission (dBuV/m) Peak / Average	HORIZ / VERT	Limits (dBuV/m) Peak / Average	Margin (dB)
88.3	48.76/45.20	HORIZ	67.96 / 47.96	-19.20/-2.76
88.3	31.47/25.35	VERT	67.96 / 47.96	-36.49/-22.61

- Note:**
- (1) All Readings below 1GHz are Quasi-Peak, above are performed with peak and/or average measurements as necessary.
 - (2) Emission Level = Reading Level + Probe Factor + Cable Loss.
 - (3) The average measurement was not performed when the peak measured data under the limit of average detection. If the readings given are average, peak measurement should also be supplied.

B. General Radiated Emission Data

Product : Wireless Headphone Test Mode : CH1
 Test Item : Fundamental Radiated Emission Data Temperature : 25 °C
 Test Voltage : DC 5V (Power by Adapter) Humidity : 56%RH
 Test Result : **PASS**

CH Low

Freq. (MHz)	Emission (dBuV/m) QP Detector	HORIZ / VERT	Limits (dBuV/m)	Margin (dB)
93.32	26.82	HORZ	43.5	-16.68
53.16	25.80	VERT	40.0	-14.20
176.56	31.65	HORZ	43.5	-11.85
176.88	22.41	VERT	43.5	-21.09
264.84	44.08	Horiz./	46.0	-1.92
264.80	35.80	VERT	46.0	-10.20

- Note:**
- (1) All Readings below 1GHz are Quasi-Peak, above are performed with peak and/or average measurements as necessary.
 - (2) Emission Level = Reading Level + Probe Factor + Cable Loss.

6. Band Edge

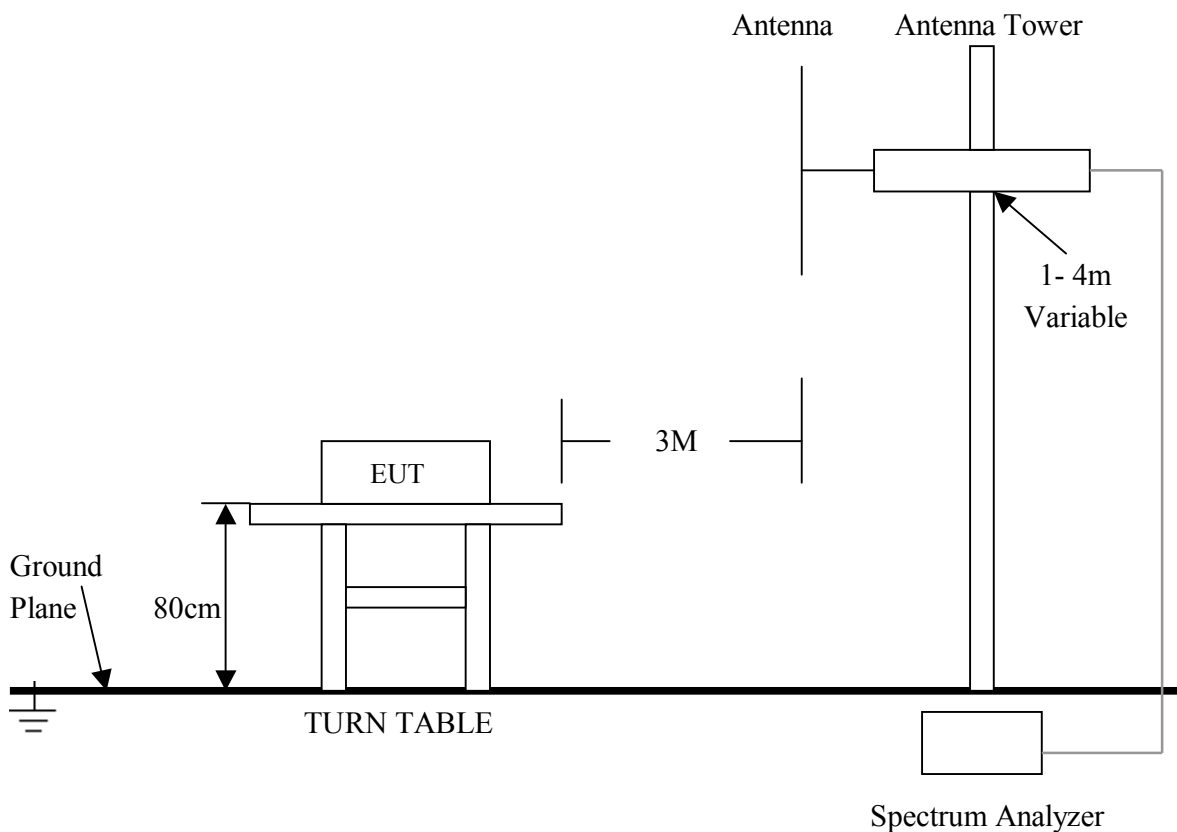
6.1 Test Equipment

Please refer to Section 10 this report.

6.2 Test Procedure

1. The EUT was tested according to ANSI C63.4 - 2003.
2. The EUT, peripherals were put on the turntable which table size is 1m x 1.5 m, table high 0.8 m. All set up is according to ANSI C63.4-2003.

6.3 Radiated Test Setup



For the actual test configuration , please refer to the related items – Photos of Testing

6. 4 Configuration of The EUT

Same as section 4 . 4 of this report

6. 5 EUT Operating Condition

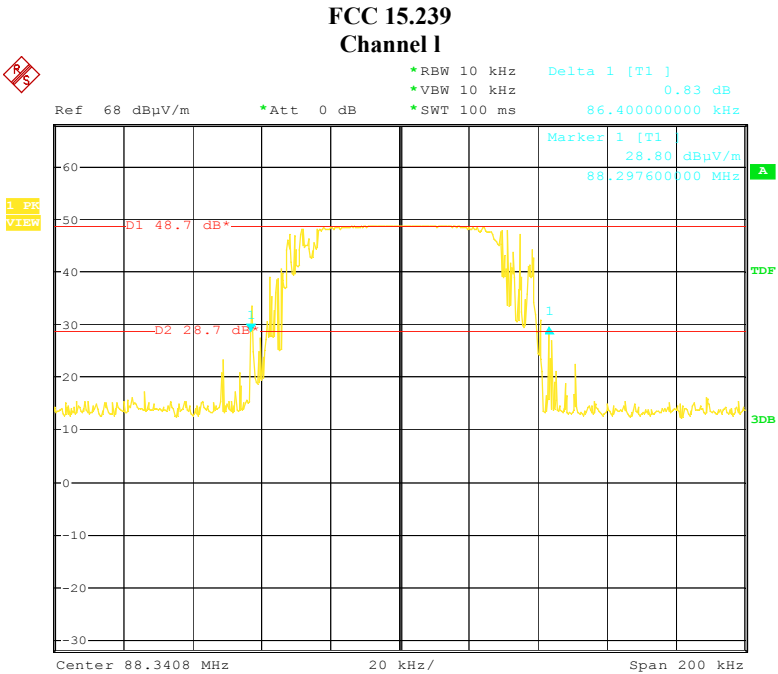
Same as section 4 . 5 of this report.

6. 6 Band Edge FCC 15.239 Limit

Emission from the intentional radiator shall be confined within a bands 200kHz wide centered on the operating frequency. The 200 kHz band shall lie wholly within the frequency range of 88 to 108 MHz.

6. 7 Band Edge Test Result

Product	: Wireless Headphone	Test Mode	: Channel 1
Test Item	: Band Edge Data	Temperature	: 25 °C
Test Voltage	: DC 5V (Power by Adapter)	Humidity	: 56%RH
Test Result	: PASS		



Date: 8.APR.2008 16:06:45

- Note:**
- (1) The field strength of any emissions which appear outside of this band shall not exceed the general radiated emission limits in Section 15.209.
 - (2) The average measurement was not performed when the peak measured data under the limit of average detection.

7. Antenna Requirement

According to Section 15.203, an intentional radiator shall be designed to ensure that no antenna other than that furnished by the responsible party shall be used with the device.

The transmitter's antenna is on PCB layout which is a copper trace on PCB, this is permanently attached antenna and meets the requirements of this section.

8. Photos of Testing

8.1 EUT Test Photographs



8. 2 EUT Detailed Photographs

EUT top view

DS-FM2098



DS-FM198



DS-FM1082



DS-FM1082



DS-FM2098



DS-S242-02



EUT bottom view

DS-FM2098





DS-FM198



DS-FM1082



DS-FM 2098

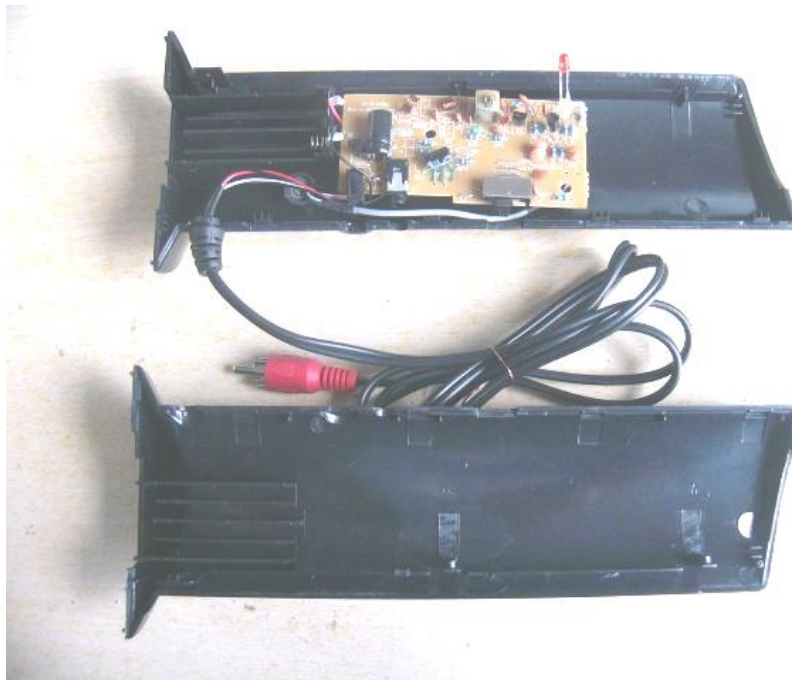


DS-S242-02



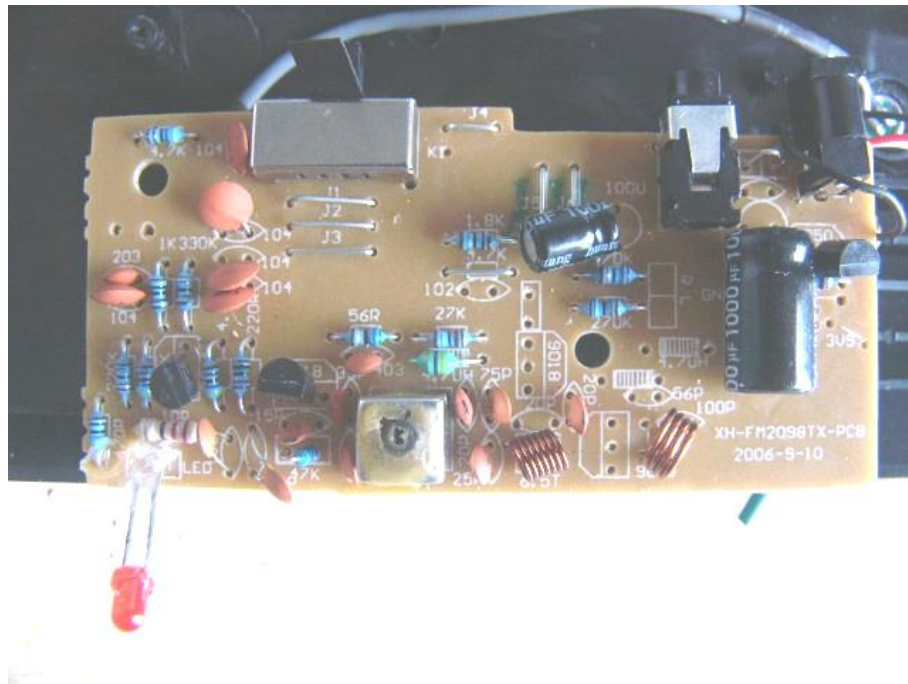
EUT inside whole view

DS-FM2098



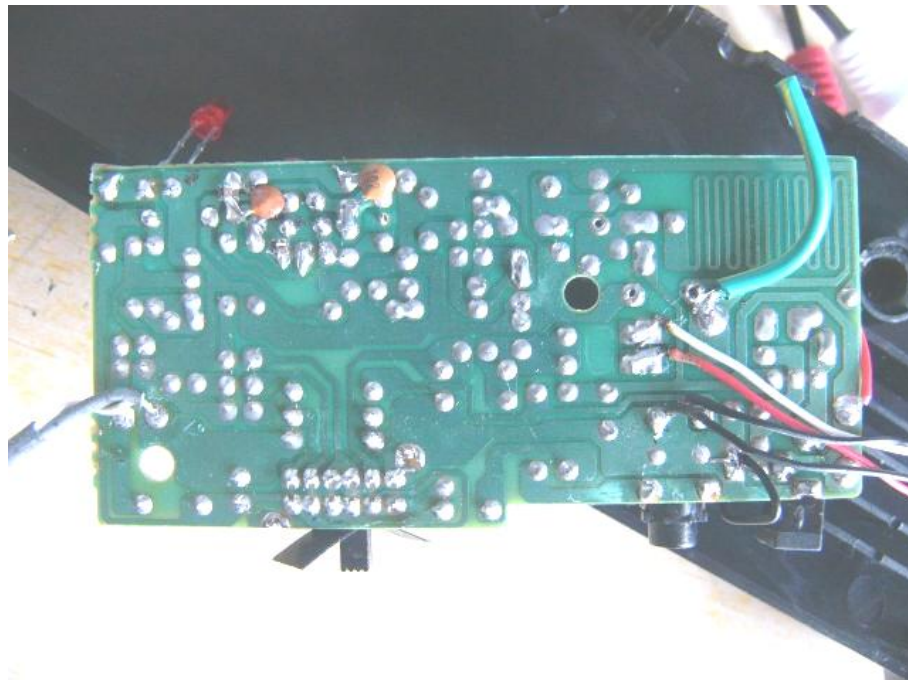
Main & RF board component side

DS-FM2098



Main & RF board solder side

DS-FM2098



9. FCC ID Label

FCC ID: V69DS-FM2098

This device complies with Part 15 of the FCC Rules. Operation is subject to the following two conditions: (1) this device may not cause harmful interference, and (2) this device must accept any interference received, including interference that may cause undesired operation.

The Label must not be a stick-on paper label. The Label on these products must be permanently affixed to the product and readily visible at the time of purchase and must last the expected lifetime of the equipment not be readily detachable.

Proposed Label Location on EUT

EUT Bottom View/Proposed FCC ID Label Location



10. Test Equipment

The following test equipments were used during the radiated & conducted emission test:

Equipment/ Facilities	Manufacturer	Model #	Serial No.	Date of Cal.	Due Date
Turntable	SinTek	N/A	N/A	NCR	NCR
Antenna Tower	SinTek	N/A	N/A	NCR	NCR
OATS	SinTek	N/A	N/A	Oct. 9, 2007	Oct. 9, 2010
EMI Test Receiver	Rohde & Schwarz	ESPI7	100013	July 9, 2007	July 9, 2008
Spectrum Analyzer	Rohde & Schwarz	FSP40	100273	Sep.18, 2007	Sep.18, 2008
Signal Generator	FLUKE	PM5418+Y/C	LO747012	Feb.10, 2008	Feb.10, 2009
Signal Generator	FLUKE	PM5418TX	LO738007	Feb.10, 2008	Feb.10, 2009
Loop Antenna	SCHWARZBECK	FMZB1516	113	Jan. 30, 2008	Jan. 30, 2009
Loop Antenna	Rohde & Schwarz	HFH2-Z2	872096/16	Jan. 30, 2008	Jan. 30, 2009
Trilog-Super Broadband Antenna	SCHWARZBECK	VULB9161	9161-4079	Sep.18, 2007	Sep.18, 2008
Trilog-Super Broadband Antenna	SCHWARZBECK	VULB9161	9161-4080	Sep.18, 2007	Sep.18, 2008
Broad-Band Horn Antenna	SCHWARZBECK	BBHA 9120D	9120D-564	Sep.18, 2007	Sep.18, 2008
Broad-Band Horn Antenna	SCHWARZBECK	BBHA 9120D	9120D-565	Sep.18, 2007	Sep.18, 2008
AMN	Rohde & Schwarz	ESH3-Z5	100196	Oct. 23, 2007	Oct. 23, 2008
AMN	Rohde & Schwarz	ESH3-Z5	100197	Oct. 23, 2007	Oct. 23, 2008
Pulse Limiter	Rohde & Schwarz	ESH3-Z2	N/A	N/A	N/A
Absorbing Clamp	Rohde & Schwarz	MDS-21	N/A	Oct. 29, 2007	Oct. 29, 2008
KMO Shielded Room	KMO	KMO-001	N/A	N/A	N/A
Coaxial Cable with N-Connectors	SCHWARZBECK	AK9515H	95549	Sep.18, 2007	Sep.18, 2008
Power Meter	Rohde & Schwarz	NRVD	100041	Feb.10, 2008	Feb.10, 2009
Radio Communication Test Set	Rohde & Schwarz	CMS 54	846621/024	Feb.10, 2008	Feb.10, 2009
Modulation Analyzer	Hewlett-Packard	8901B	2303A00362	Feb.10, 2008	Feb.10, 2009
Communication Analyzer	Wavetek Stabilock	4032	N/A	Feb. 01, 2008	Feb.01, 2009
Storage Oscilloscope	Tektronix	TDS3052	N/A	Feb. 01, 2008	Feb.01, 2009
Attenuator	Schwarzbeck	20dB	N/A	Feb. 01, 2008	Feb.01, 2009
Attenuator	Rohde & Schwarz	10dB	N/A	Feb. 01, 2008	Feb.01, 2009
SOHO Telephone Switching System	IKE	2000-108C	N/A	Feb.10, 2008	Feb.10, 2009
Temperature Chamber	TABAI	PSL-4GTW	N/A	Feb.10, 2008	Feb.10, 2009