

System Check_Head_1900MHz

Communication System: ; Frequency: 1900.0

Medium: HSL_1900_210816. Medium parameters used: $f= 1900.0$ MHz; $\sigma= 1.45$ S/m; $\epsilon_r = 41.2$

Ambient Temperature: 23.2°C; Liquid Temperature: 22.5°C

DASY6 Configuration:

- Probe: EX3DV4 - SN3642; ConvF(7.97, 7.97, 7.97); Calibrated: 2021-04-26
- Sensor-Surface: 1.4 mm
- Electronics: DAE4 Sn1647; Calibrated: 2021-01-07
- Phantom: Twin-SAM V4.0 (30deg probe tilt); Serial: 1489; Section: Flat
- Measurement Software: cDASY6 V6.6.0.13926
- UID: CW, 0--
- MAIA: Area Scan: N/A; Zoom Scan: N/A

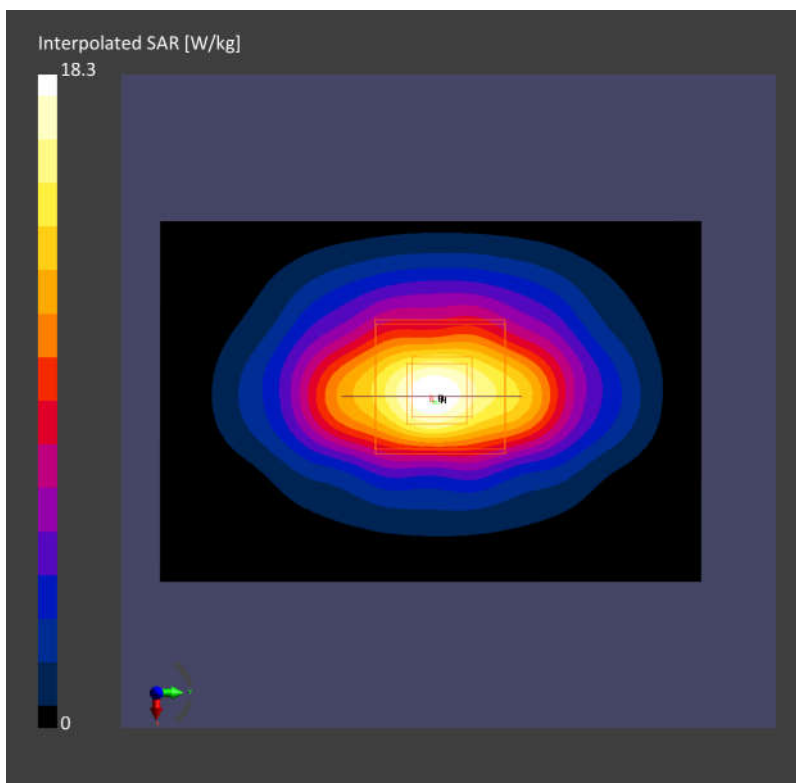
Area Scan (60.0 mm x 90.0 mm): Measurement Grid: 15.0 mm x 15.0 mm

SAR (1g) = 9.67 W/kg; SAR (10g) = 4.91 W/kg;

Zoom Scan (30.0 mm x 30.0 mm x 30.0 mm): Measurement Grid: 6.0 mm x 6.0 mm x 1.5 mm

Power Drift = -0.13 dB

SAR (1g) = 9.75 W/kg; SAR (10g) = 4.99 W/kg;



System Check_Head_2600MHz

Communication System: ; Frequency: 2600.0

Medium: HSL_2600_210816 Medium parameters used: $f = 2600.0$ MHz; $\sigma = 1.92$ S/m; $\epsilon_r = 38.4$

Ambient Temperature: 23.1°C; Liquid Temperature: 22.2°C

DASY6 Configuration:

- Probe: EX3DV4 - SN3642; ConvF(7.13, 7.13, 7.13); Calibrated: 2021-04-26
- Sensor-Surface: 1.4 mm
- Electronics: DAE4 Sn1647; Calibrated: 2021-01-07
- Phantom: Twin-SAM V4.0 (30deg probe tilt); Serial: 1489; Section: Flat
- Measurement Software: cDASY6 V6.6.0.13926
- UID: CW, 0--
- MAIA: Area Scan: N/A; Zoom Scan: N/A

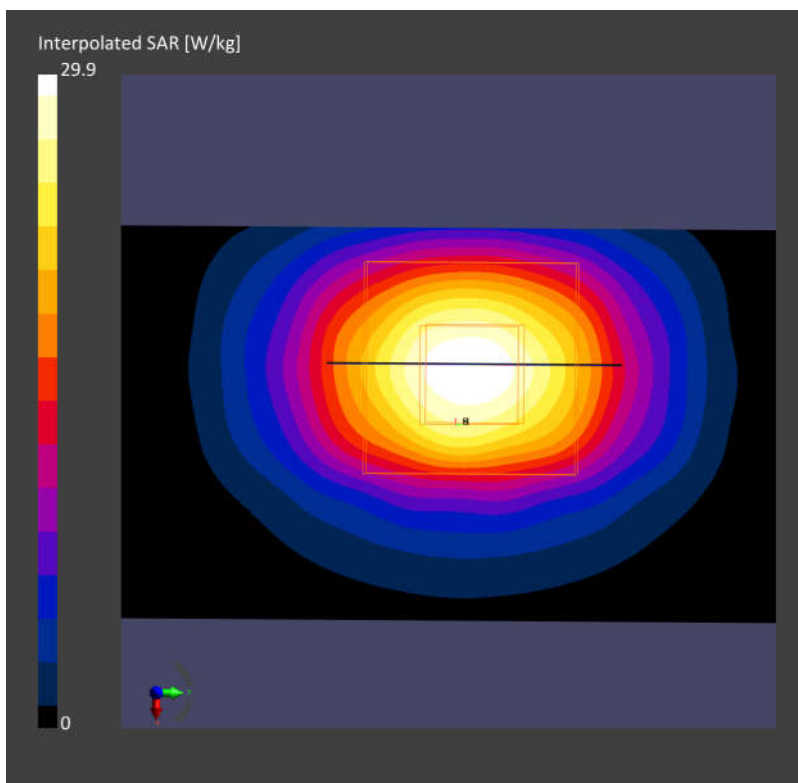
Area Scan (40.0 mm x 80.0 mm): Measurement Grid: 10.0 mm x 10.0 mm

SAR (1g) = 13.8 W/kg; SAR (10g) = 6.68 W/kg;

Zoom Scan (30.0 mm x 30.0 mm x 30.0 mm): Measurement Grid: 5.0 mm x 5.0 mm x 1.5 mm

Power Drift = 0.05 dB

SAR (1g) = 14.3 W/kg; SAR (10g) = 6.62 W/kg;



System Check_Head_3700MHz

Communication System: ; Frequency: 3700.0

Medium: HSL_3700_210816. Medium parameters used: $f= 3700.0$ MHz; $\sigma= 3.13$ S/m; $\epsilon_r = 37.6$

Ambient Temperature: 23.4°C; Liquid Temperature: 22.3°C

DASY6 Configuration:

- Probe: EX3DV4 - SN3728; ConvF(6.49, 6.49, 6.49); Calibrated: 2021-02-23
- Sensor-Surface: 1.4 mm
- Electronics: DAE4 Sn1424; Calibrated: 2021-01-19
- Phantom: Twin-SAM V4.0 (30deg probe tilt); Serial: 1489; Section: Flat
- Measurement Software: cDASY6 V6.6.0.13926
- UID: CW, 0--
- MAIA: Area Scan: N/A; Zoom Scan: N/A

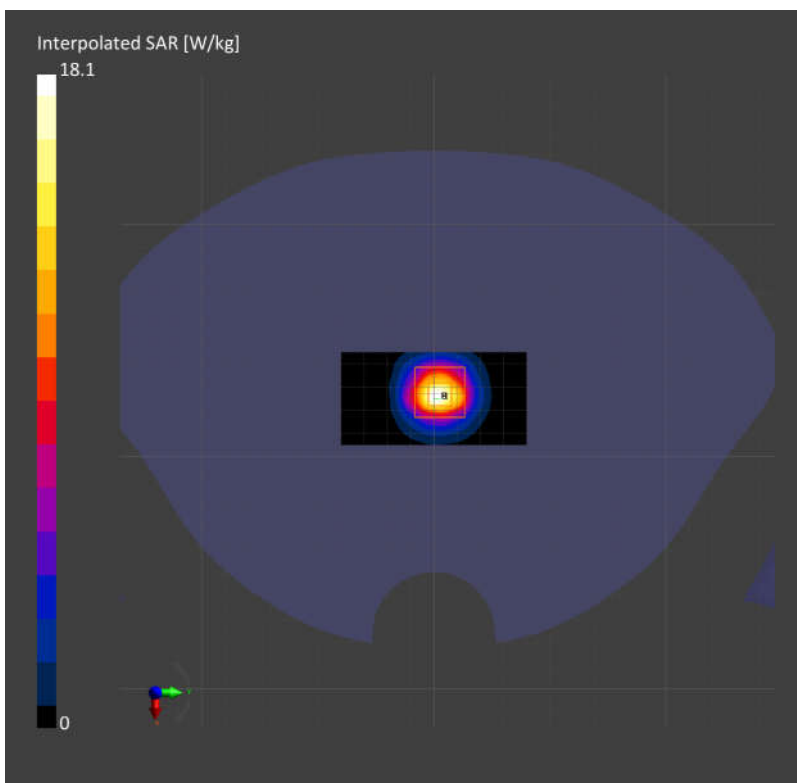
Area Scan (40.0 mm x 80.0 mm): Measurement Grid: 10.0 mm x 10.0 mm

SAR (1g) = 6.43 W/kg; SAR (10g) = 2.45 W/kg;

Zoom Scan (28.0 mm x 28.0 mm x 28.0 mm): Measurement Grid: 5.0 mm x 5.0 mm x 1.4 mm

Power Drift = 0.11 dB

SAR (1g) = 6.75 W/kg; SAR (10g) = 2.48 W/kg;



Measurement Report for Device
Device Under Test Properties

Model, Manufacturer	Dimensions [mm]	IMEI	DUT Type
Device,	100.0 x 100.0 x 100.0		5G Verification Source

Exposure Conditions

Phantom Section	Position, Test Distance [mm]	Frequency [MHz]	Conversion Factor
5G	FRONT, 5.55	30000.0	1.0

Hardware Setup

Phantom	Medium	Probe, Calibration Date	DAE, Calibration Date
mmWave - xxxx	Air -	EUmmWV4 - SN9441_F1-78GHz, 2020-11-24	DAE4 Sn656, 2021-01-22

Scans Setup

Scan Type	5G Scan
Grid Extents [mm]	60.0 x 60.0
Grid Steps [lambda]	0.25 x 0.25
Sensor Surface [mm]	5.5

Measurement Results

Date	2021-08-23, 07:11
Avg. Area [cm ²]	4.00
psPDn+ [W/m ²]	26.4
psPDtot+ [W/m ²]	26.6
H _{max} [A/m]	0.328
E _{max} [V/m]	121
max(Stot) [W/m ²]	36.8
Power Drift [dB]	0.12

