



| | |
|-----------|----------------------|
| Applicant | Kyocera |
| FCC ID: | V65C5133 |
| Report #: | CT-C5133-9B2-0812-R0 |

EXHIBIT 9 APPENDIX B2: SAR DISTRIBUTION PLOTS (BODY)

PCS

| | |
|-----------|----------------------|
| Applicant | Kyocera |
| FCC ID: | V65C5133 |
| Report #: | CT-C5133-9B2-0812-R0 |

Test Laboratory: Comptest/Kyocera

Date: 08/21/2012

FCC C5133 CDMA-1900 Flat with 15mm Air Space, Face Down Ch. 600

Communication System: CDMA-1900, Frequency: 1880 MHz, Duty Cycle: 1:1

Medium: M1800, Medium parameters used: $f = 1880 \text{ MHz}$; $\sigma = 1.53 \text{ mho/m}$; $\epsilon_r = 51.9$; $\rho = 1000 \text{ kg/m}^3$

Phantom: SAM 12, Phantom section: Flat Section

DASY4 Configuration:

Probe: ES3DV3 - SN3078, ConvF(4.55, 4.55, 4.55), Calibrated: 7/19/2012

Sensor-Surface: 4mm (Mechanical Surface Detection),

Electronics: DAE4 Sn675, Calibrated: 5/23/2012

Measurement SW: DASY4, V4.7 Build 80

Postprocessing SW: SEMCAD, V1.8 Build 186

Temperature:

Room T = 21.8 +/- 1 deg C, Liquid T = 22.0 +/- 1 deg C

CDMA-1900 FLAT - Face Down Ch600/Area Scan (61x91x1): Measurement grid: dx=15mm, dy=15mm

Maximum value of SAR (interpolated) = 0.704 mW/g

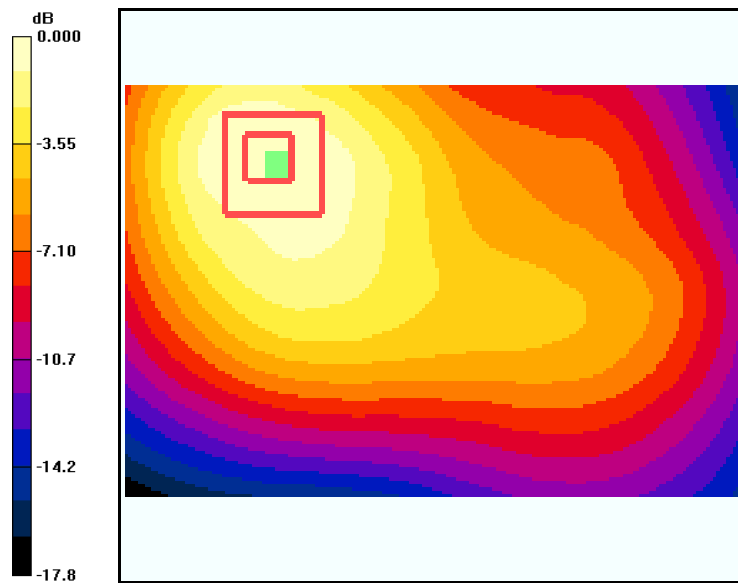
CDMA-1900 FLAT - Face Down Ch600/Zoom Scan (7x7x7)/Cube 0: Measurement grid: dx=5mm, dy=5mm, dz=5mm

Reference Value = 14.9 V/m; Power Drift = 0.008 dB

Peak SAR (extrapolated) = 1.03 W/kg

SAR(1 g) = 0.652 mW/g; SAR(10 g) = 0.413 mW/g

Maximum value of SAR (measured) = 0.699 mW/g



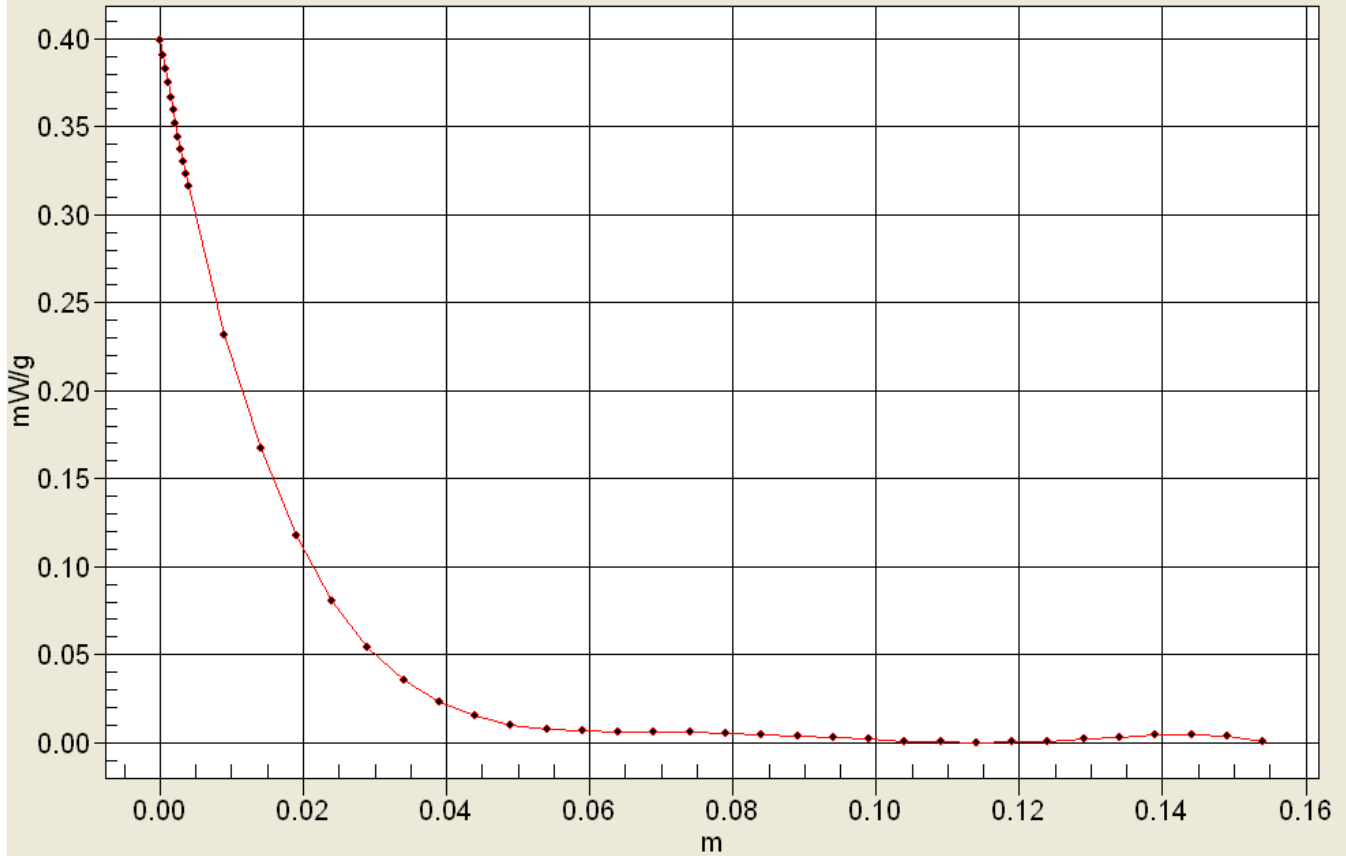
0 dB = 0.704mW/g



| | |
|-----------|----------------------|
| Applicant | Kyocera |
| FCC ID: | V65C5133 |
| Report #: | CT-C5133-9B2-0812-R0 |

Interpolated SAR(x,y,z,f0)

SAR; Z Scan: Value Along Z, X=0, Y=0



| | |
|-----------|----------------------|
| Applicant | Kyocera |
| FCC ID: | V65C5133 |
| Report #: | CT-C5133-9B2-0812-R0 |

Test Laboratory: Comptest/Kyocera

Date: 08/21/2012

FCC C5133 CDMA-1900 Flat with 15mm Air Space, Face Up Ch. 600

Communication System: CDMA-1900, Frequency: 1880 MHz, Duty Cycle: 1:1

Medium: M1800, Medium parameters used: $f = 1880$ MHz; $\sigma = 1.53$ mho/m; $\epsilon_r = 51.9$; $\rho = 1000$ kg/m³

Phantom: SAM 12, Phantom section: Flat Section

DASY4 Configuration:

Probe: ES3DV3 - SN3078, ConvF(4.55, 4.55, 4.55), Calibrated: 7/19/2012

Sensor-Surface: 4mm (Mechanical Surface Detection),

Electronics: DAE4 Sn675, Calibrated: 5/23/2012

Measurement SW: DASY4, V4.7 Build 80

Postprocessing SW: SEMCAD, V1.8 Build 186

Temperature:

Room T = 21.8 +/- 1 deg C, Liquid T = 22.0 +/- 1 deg C

CDMA-1900 FLAT - Face Up Ch600/Area Scan (51x81x1): Measurement grid: dx=15mm, dy=15mm

Maximum value of SAR (interpolated) = 0.617 mW/g

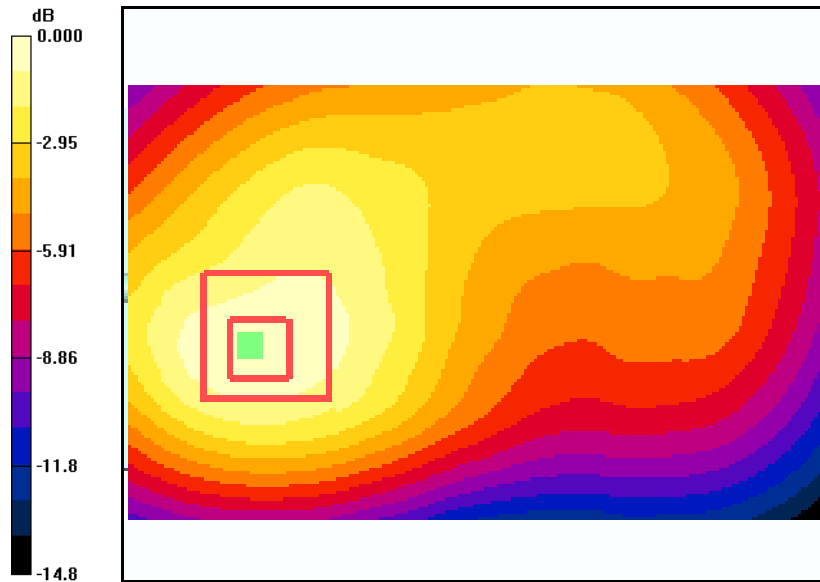
CDMA-1900 FLAT - Face Up Ch600/Zoom Scan (7x7x7)/Cube 0: Measurement grid: dx=5mm, dy=5mm, dz=5mm

Reference Value = 12.6 V/m; Power Drift = 0.048 dB

Peak SAR (extrapolated) = 0.876 W/kg

SAR(1 g) = 0.560 mW/g; SAR(10 g) = 0.348 mW/g

Maximum value of SAR (measured) = 0.608 mW/g



0 dB = 0.617mW/g



COMPTEST
Services LLC

| | |
|-----------|----------------------|
| Applicant | Kyocera |
| FCC ID: | V65C5133 |
| Report #: | CT-C5133-9B2-0812-R0 |

WIFI

| | |
|-----------|----------------------|
| Applicant | Kyocera |
| FCC ID: | V65C5133 |
| Report #: | CT-C5133-9B2-0812-R0 |

Test Laboratory: Comptest/Kyocera

Date: 08/23/2012

FCC C5133 CDMA-2400 Flat with 15mm Air Space, Face Down Ch. 11

Communication System: WLAN-2450, Frequency: 2462 MHz, Duty Cycle: 1:1

Medium: M2450, Medium parameters used: $f = 2500$ MHz; $\sigma = 1.98$ mho/m; $\epsilon_r = 52.7$; $\rho = 1000$ kg/m³

Phantom: SAM 12, Phantom section: Flat Section

DASY4 Configuration:

Probe: ES3DV3 - SN3078, ConvF(4.16, 4.16, 4.16), Calibrated: 9/19/2011

Sensor-Surface: 4mm (Mechanical Surface Detection),

Electronics: DAE4 Sn675, Calibrated: 5/23/2012

Measurement SW: DASY4, V4.7 Build 80

Postprocessing SW: SEMCAD, V1.8 Build 186

Temperature:

Room T = 21.8 +/- 1 deg C, Liquid T = 22.0 +/- 1 deg C

Ch 2450 ch11 Face DOWN/Area Scan (61x101x1): Measurement grid: dx=15mm, dy=15mm

Maximum value of SAR (interpolated) = 0.106 mW/g

Ch 2450 ch11 Face DOWN/Zoom Scan (7x7x7)/Cube 0: Measurement grid: dx=5mm, dy=5mm, dz=5mm

Reference Value = 2.13 V/m; Power Drift = -0.174 dB

Peak SAR (extrapolated) = 0.142 W/kg

SAR(1 g) = 0.025 mW/g; SAR(10 g) = 0.009 mW/g

Maximum value of SAR (measured) = 0.100 mW/g

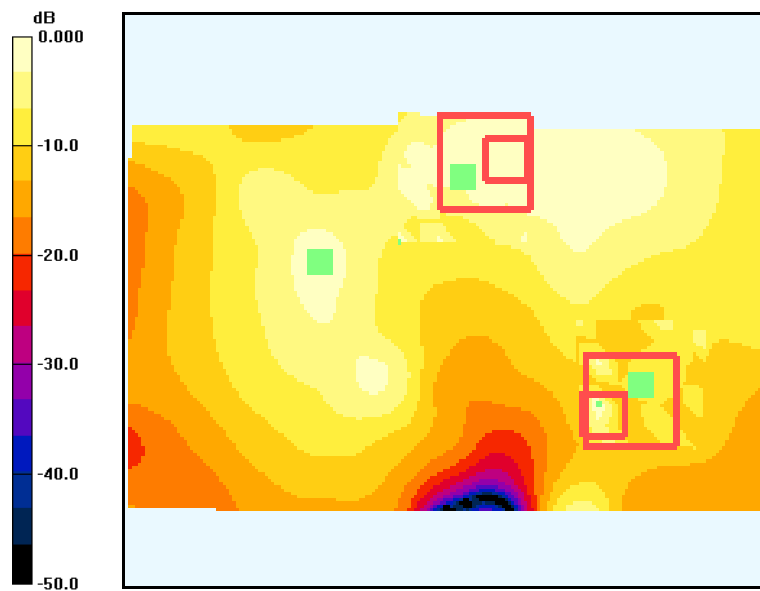
Ch 2450 ch11 Face DOWN/Zoom Scan (7x7x7)/Cube 1: Measurement grid: dx=5mm, dy=5mm, dz=5mm

Reference Value = 2.13 V/m; Power Drift = -0.174 dB

Peak SAR (extrapolated) = 0.485 W/kg

SAR(1 g) = 0.086 mW/g; SAR(10 g) = 0.041 mW/g

Maximum value of SAR (measured) = 0.122 mW/g



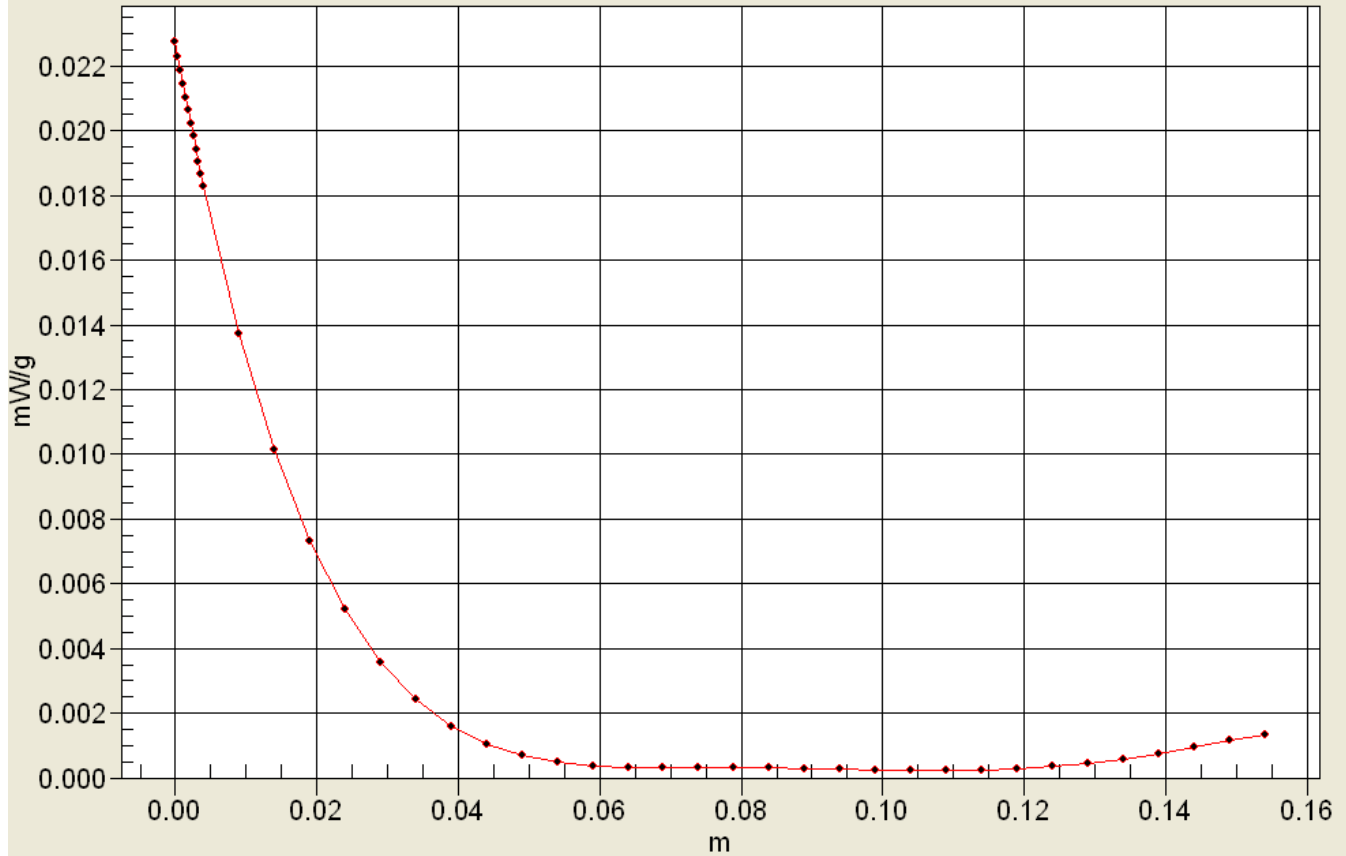
0 dB = 0.106mW/g



| | |
|-----------|----------------------|
| Applicant | Kyocera |
| FCC ID: | V65C5133 |
| Report #: | CT-C5133-9B2-0812-R0 |

Interpolated SAR(x,y,z,f0)

SAR; Z Scan: Value Along Z, X=0, Y=0



| | |
|-----------|----------------------|
| Applicant | Kyocera |
| FCC ID: | V65C5133 |
| Report #: | CT-C5133-9B2-0812-R0 |

Test Laboratory: Comptest/Kyocera

Date: 08/23/2012

FCC C5133 CDMA-2400 Flat with 15mm Air Space, Face Up Ch. 11

Communication System: WLAN-2450, Frequency: 2462 MHz, Duty Cycle: 1:1

Medium: M2450, Medium parameters used: $f = 2500$ MHz; $\sigma = 1.98$ mho/m; $\epsilon_r = 52.7$; $\rho = 1000$ kg/m³

Phantom: SAM 12, Phantom section: Flat Section

DASY4 Configuration:

Probe: ES3DV3 - SN3078, ConvF(4.16, 4.16, 4.16), Calibrated: 9/19/2011

Sensor-Surface: 4mm (Mechanical Surface Detection),

Electronics: DAE4 Sn675, Calibrated: 5/23/2012

Measurement SW: DASY4, V4.7 Build 80

Postprocessing SW: SEMCAD, V1.8 Build 186

Temperature:

Room T = 21.8 +/- 1 deg C, Liquid T = 22.0 +/- 1 deg C

Ch 2450 ch11 Face UP-/Area Scan (61x101x1): Measurement grid: dx=15mm, dy=15mm

Maximum value of SAR (interpolated) = 0.326 mW/g

Ch 2450 ch11 Face UP-/Zoom Scan (7x7x7)/Cube 0: Measurement grid: dx=5mm, dy=5mm, dz=5mm

Reference Value = 2.04 V/m; Power Drift = -0.108 dB

Peak SAR (extrapolated) = 0.618 W/kg

SAR(1 g) = 0.026 mW/g; SAR(10 g) = 0.013 mW/g

Maximum value of SAR (measured) = 0.270 mW/g

Ch 2450 ch11 Face UP-/Zoom Scan (7x7x7)/Cube 1: Measurement grid: dx=5mm, dy=5mm, dz=5mm

Reference Value = 2.04 V/m; Power Drift = -0.108 dB

Peak SAR (extrapolated) = 0.246 W/kg

SAR(1 g) = 0.026 mW/g; SAR(10 g) = 0.012 mW/g

Maximum value of SAR (measured) = 0.181 mW/g

