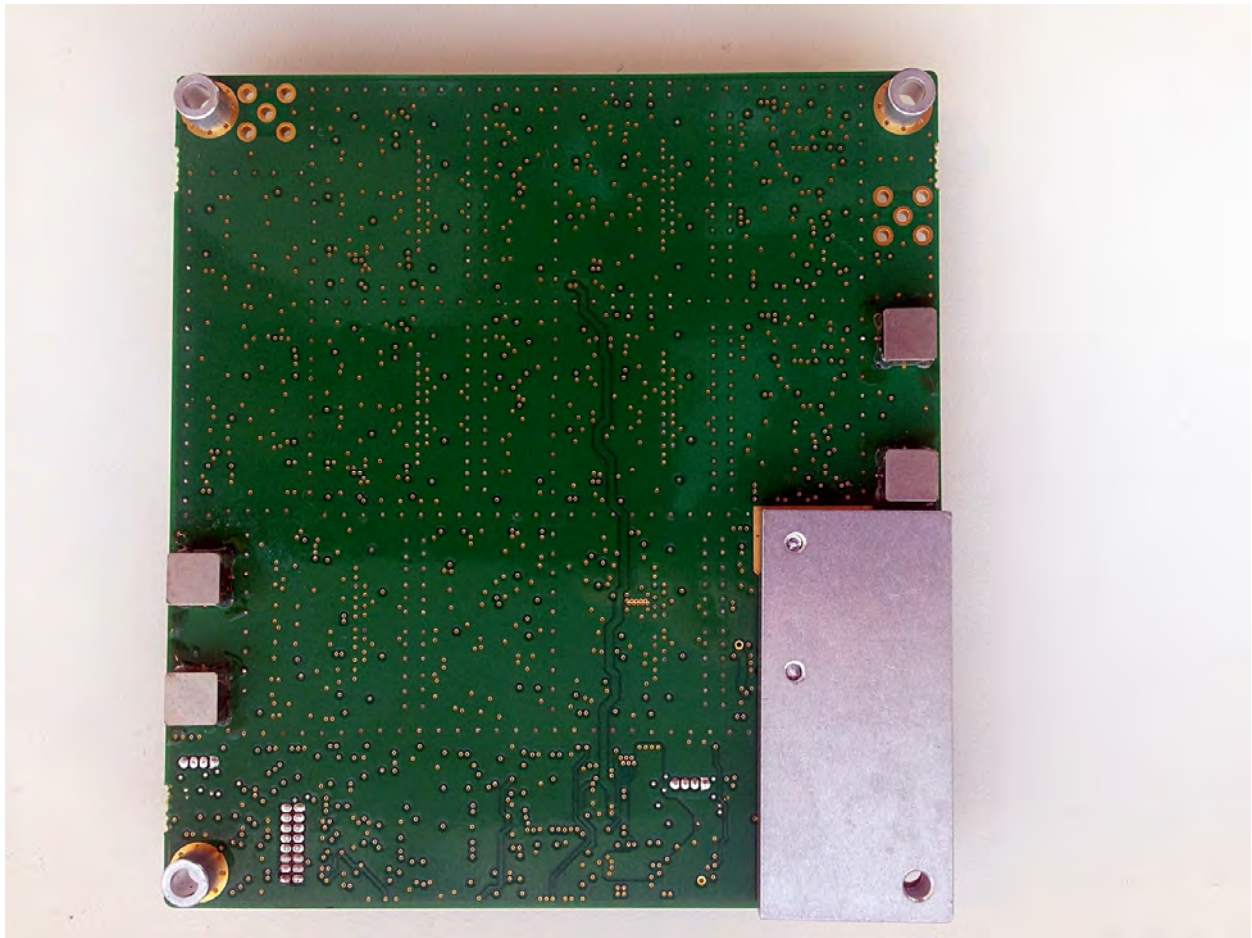
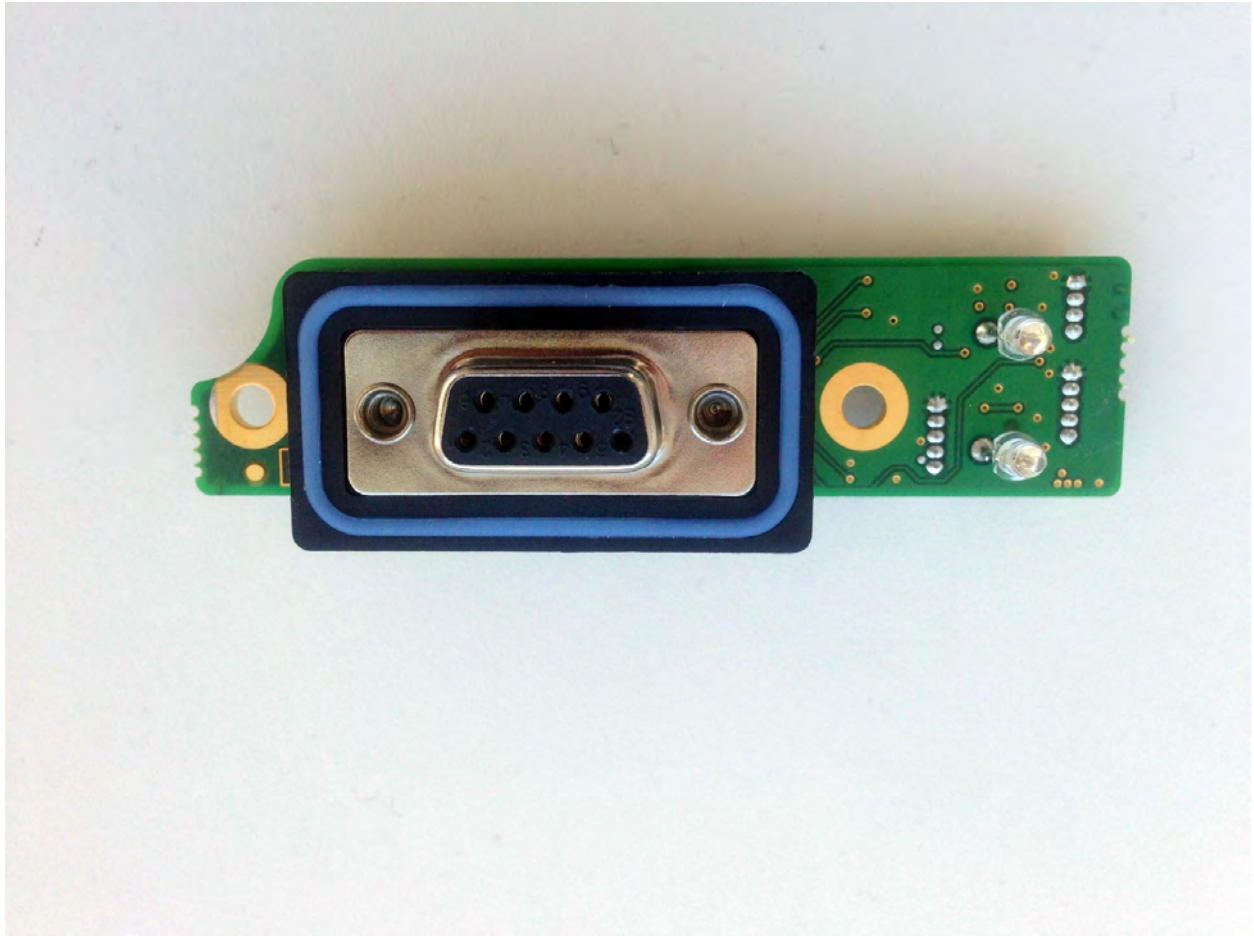


KS30.19 - Front VHF VGA

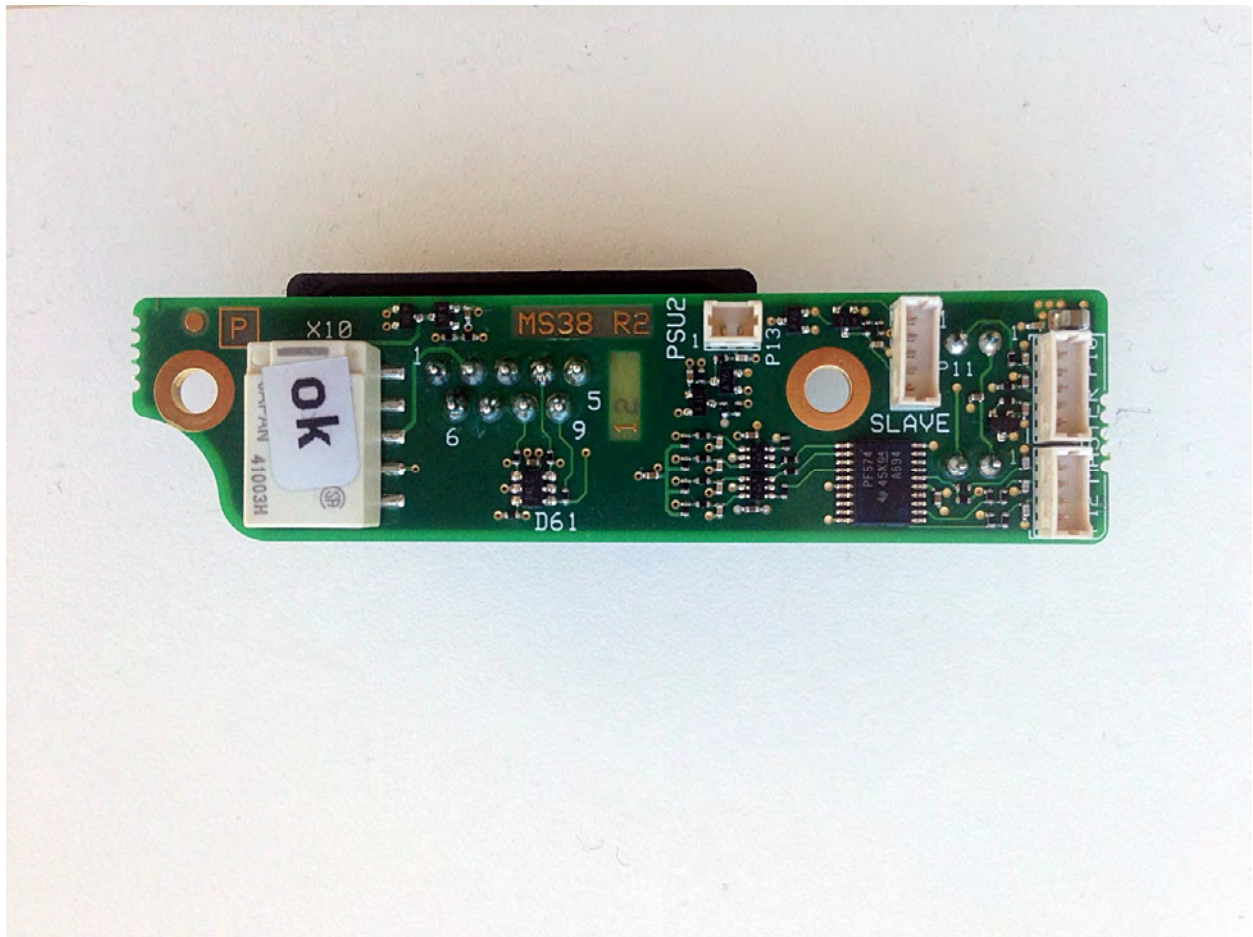


KS30.19 – Back VHF VGA





KS38.1 – Front – AIO alarm board

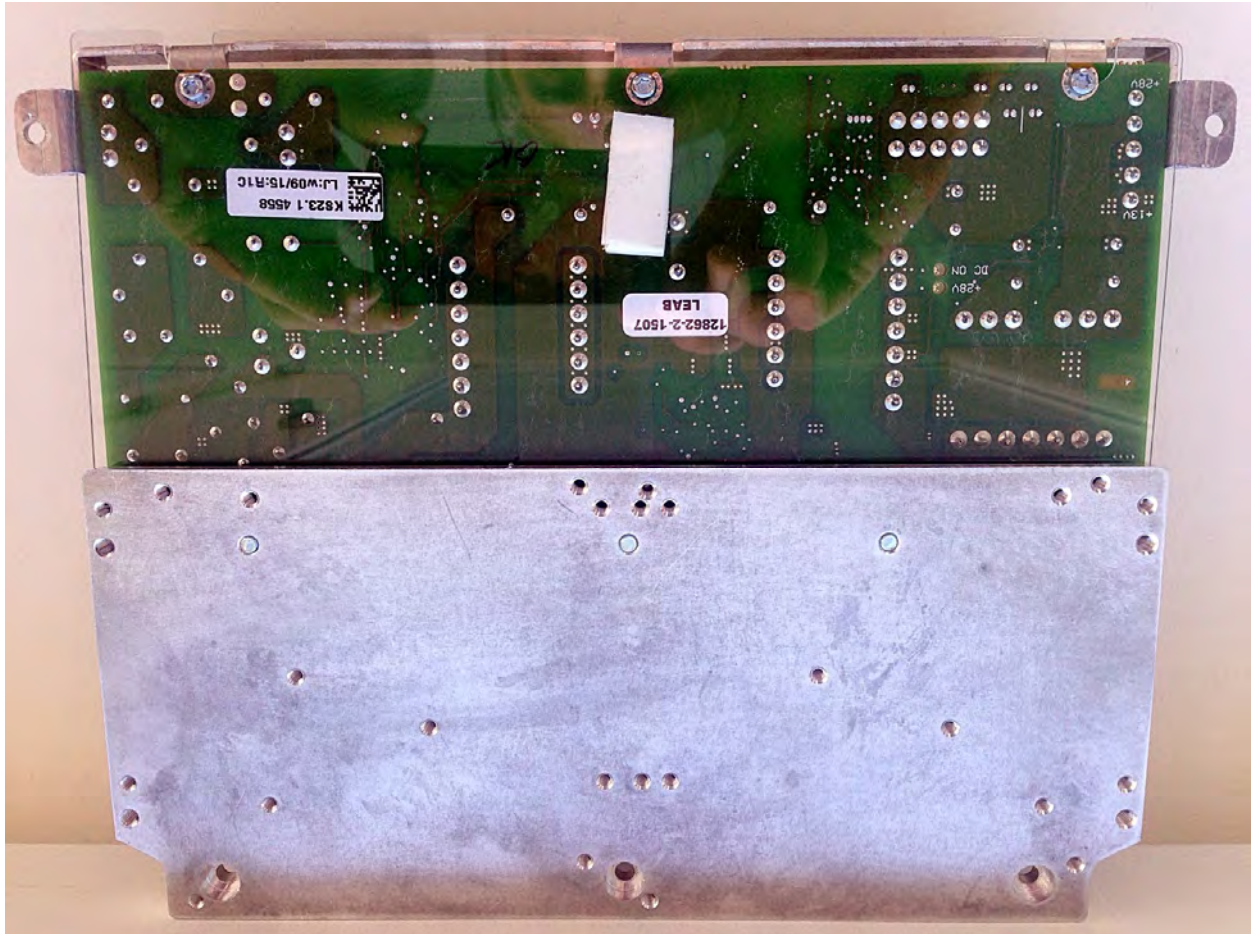


KS38.1 – Back – AIO Alarm board

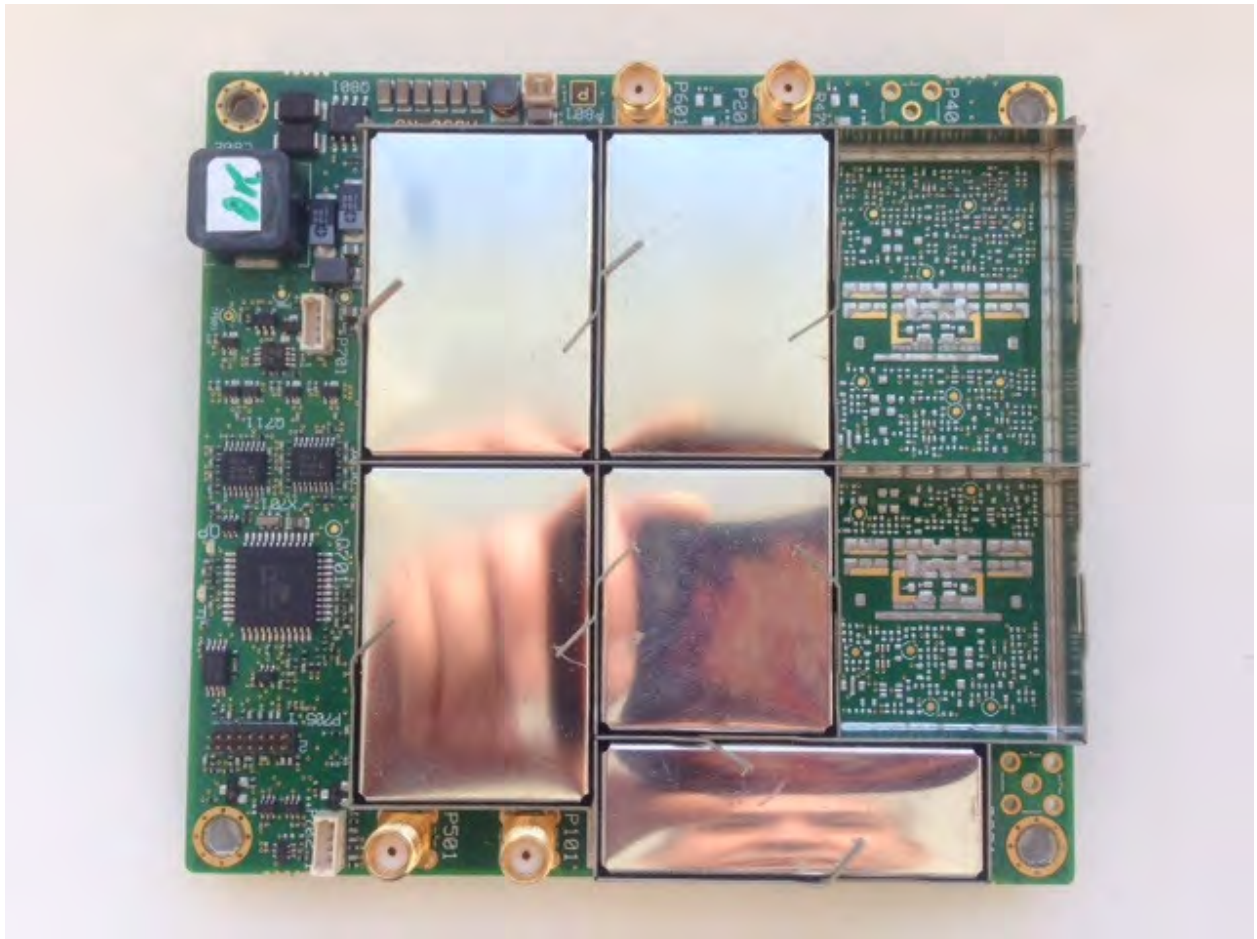


KS23.1 – Front Power supply

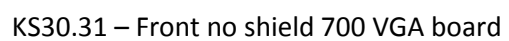




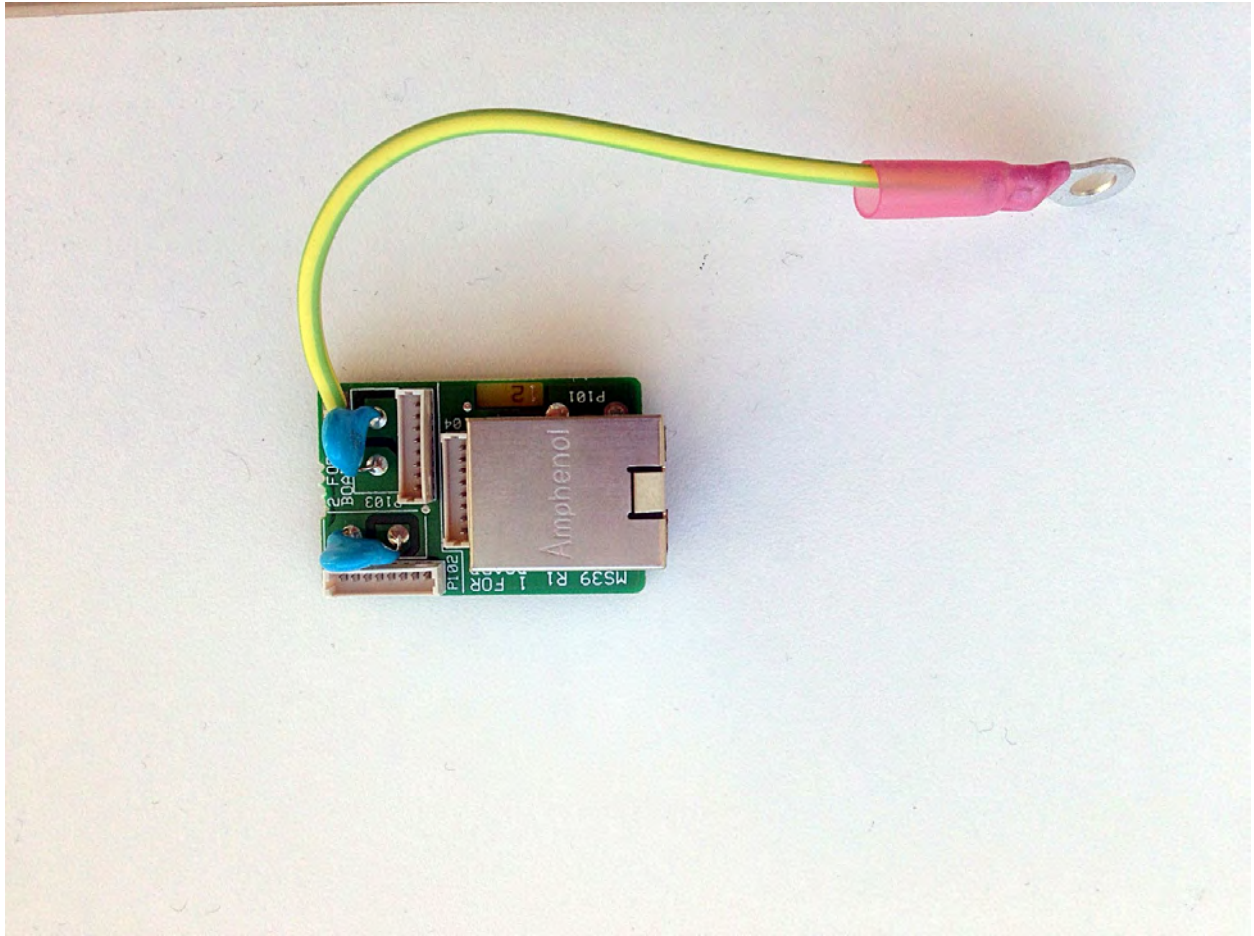
KS23.1 – Back Power supply



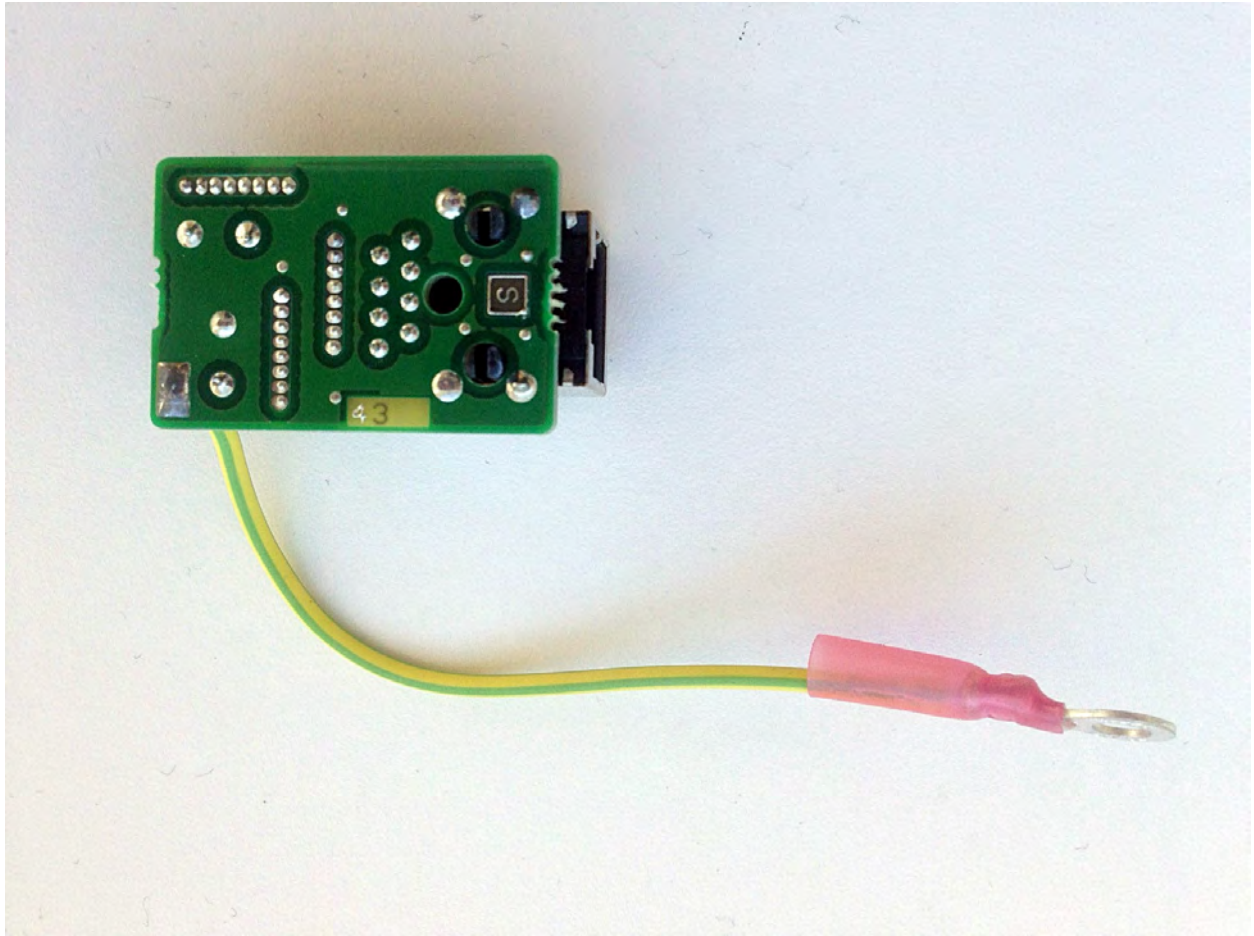
KS30.31 – Front 700 VGA board



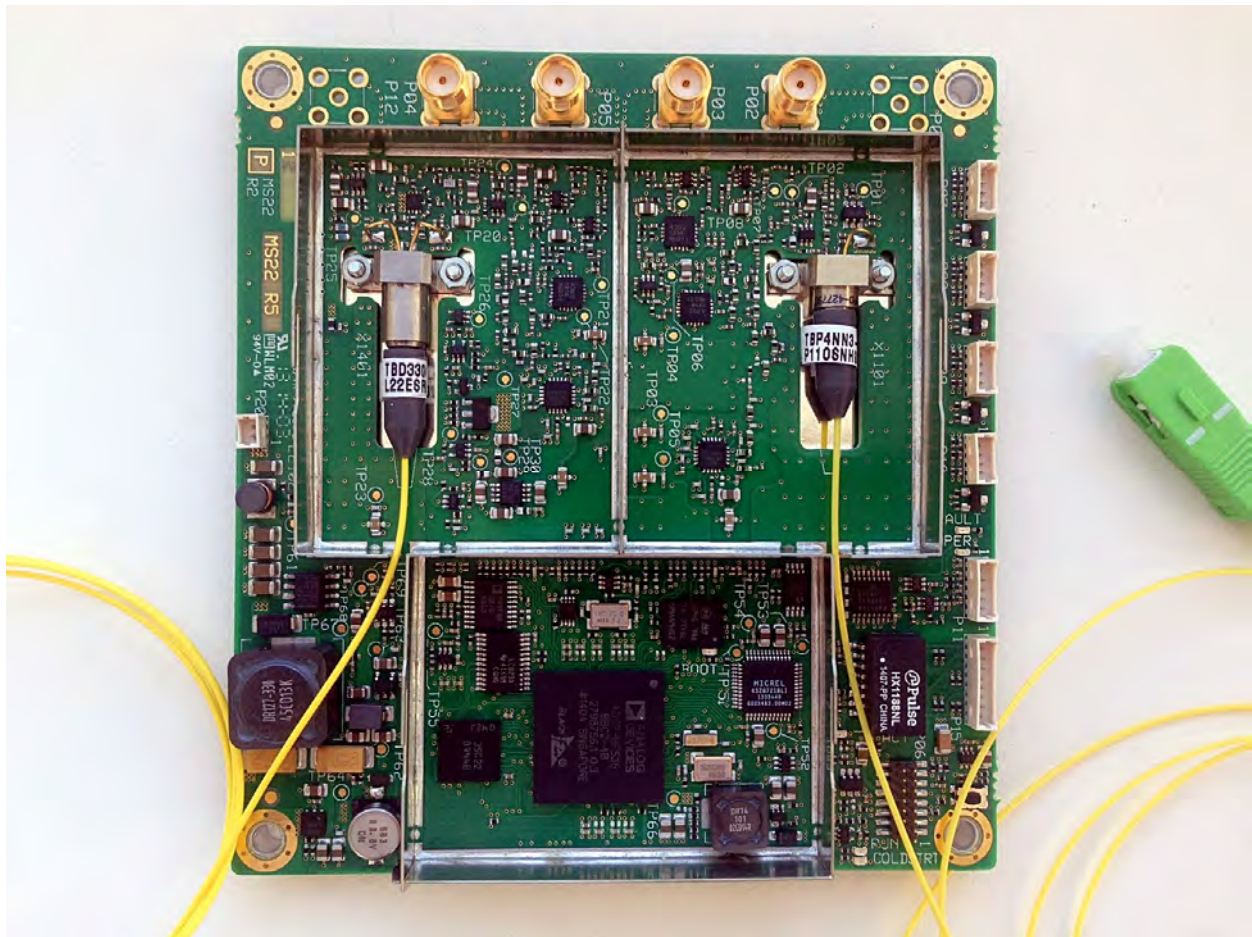




KS39.1 – Front Ethernet Board

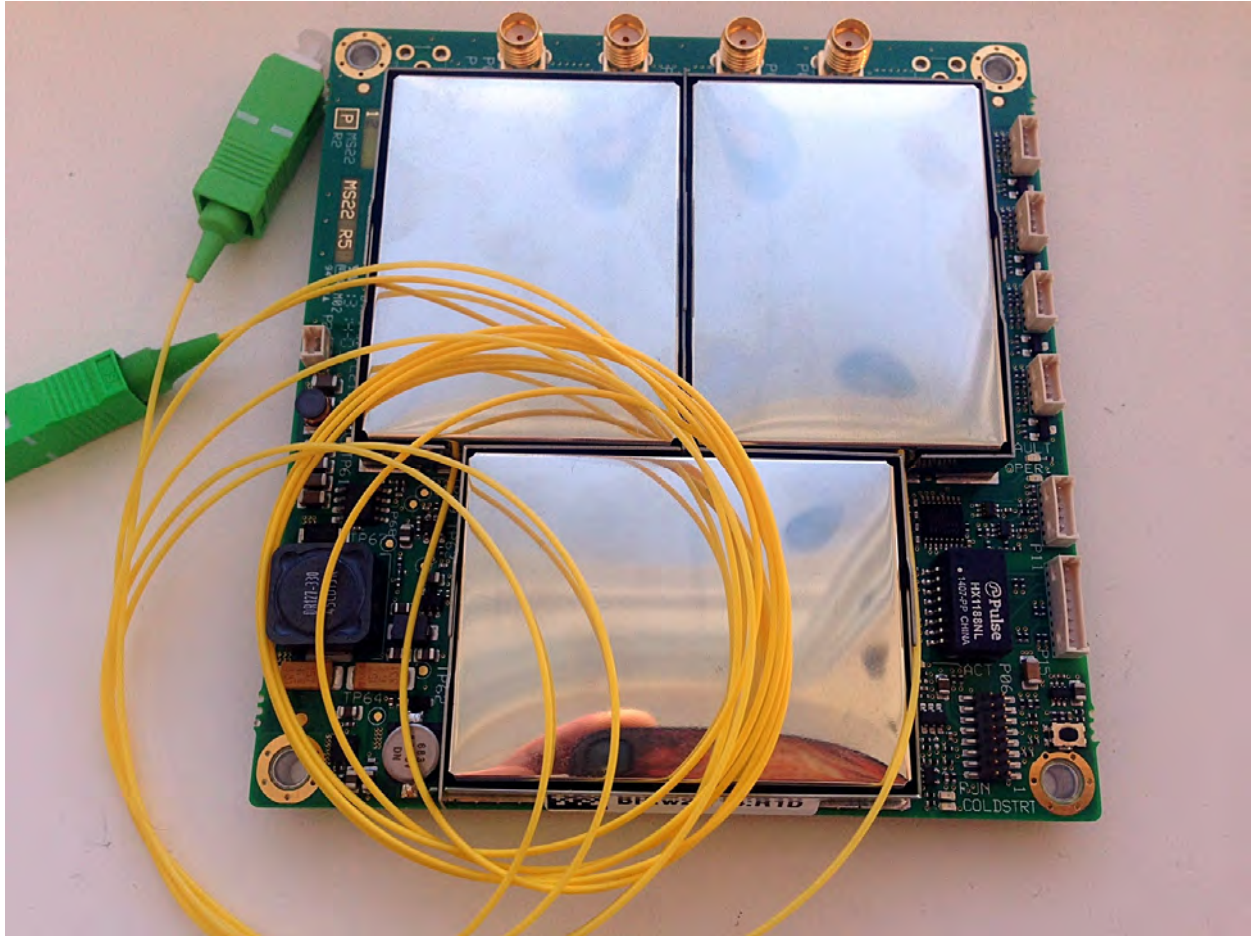


KS39.1 – Back Ethernet board

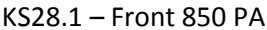


KS22.1 – Front FOR Fiber optic board

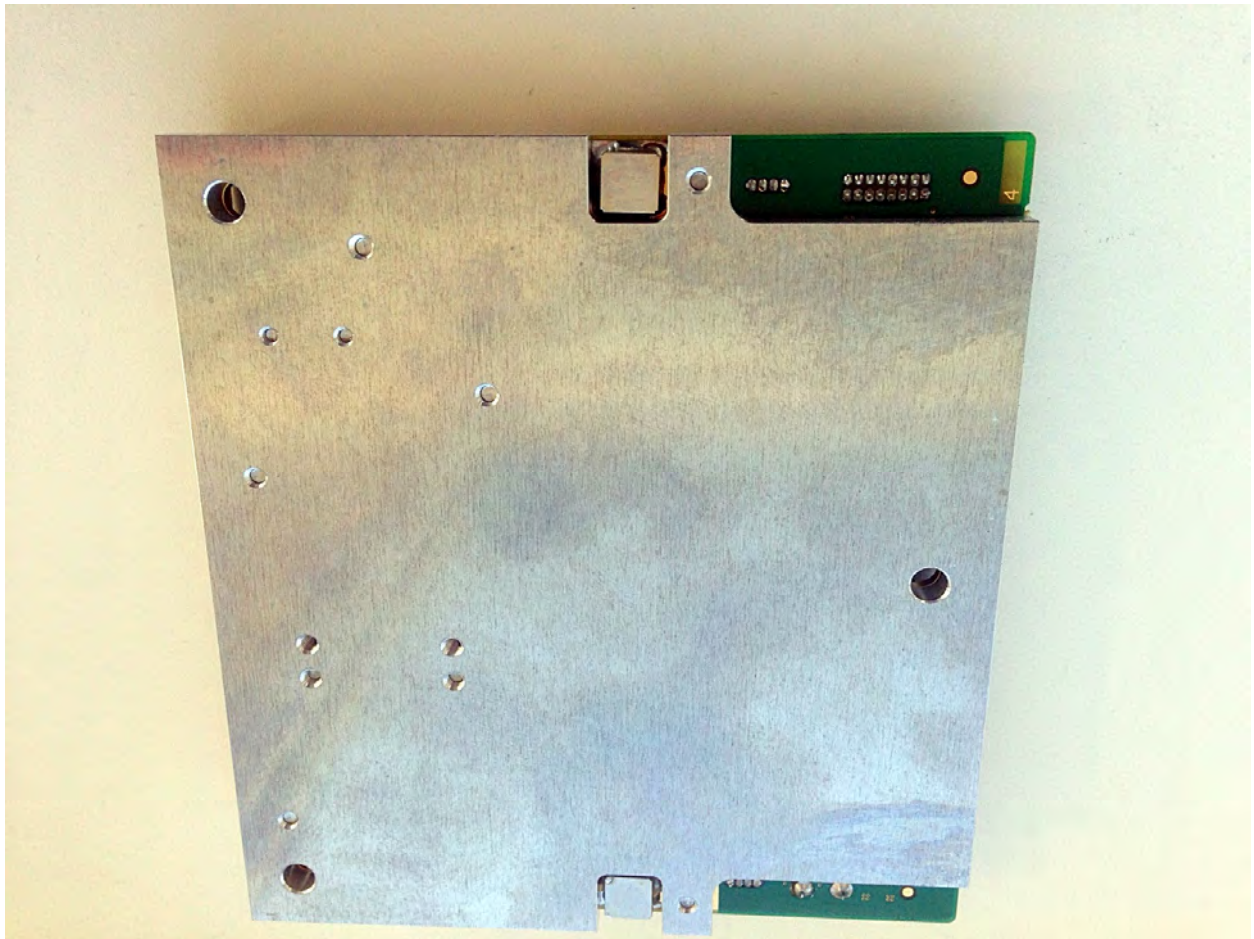




KS22.1 – Front with shield FOR Fiber optic board



## KS28.1 – Front 850 PA

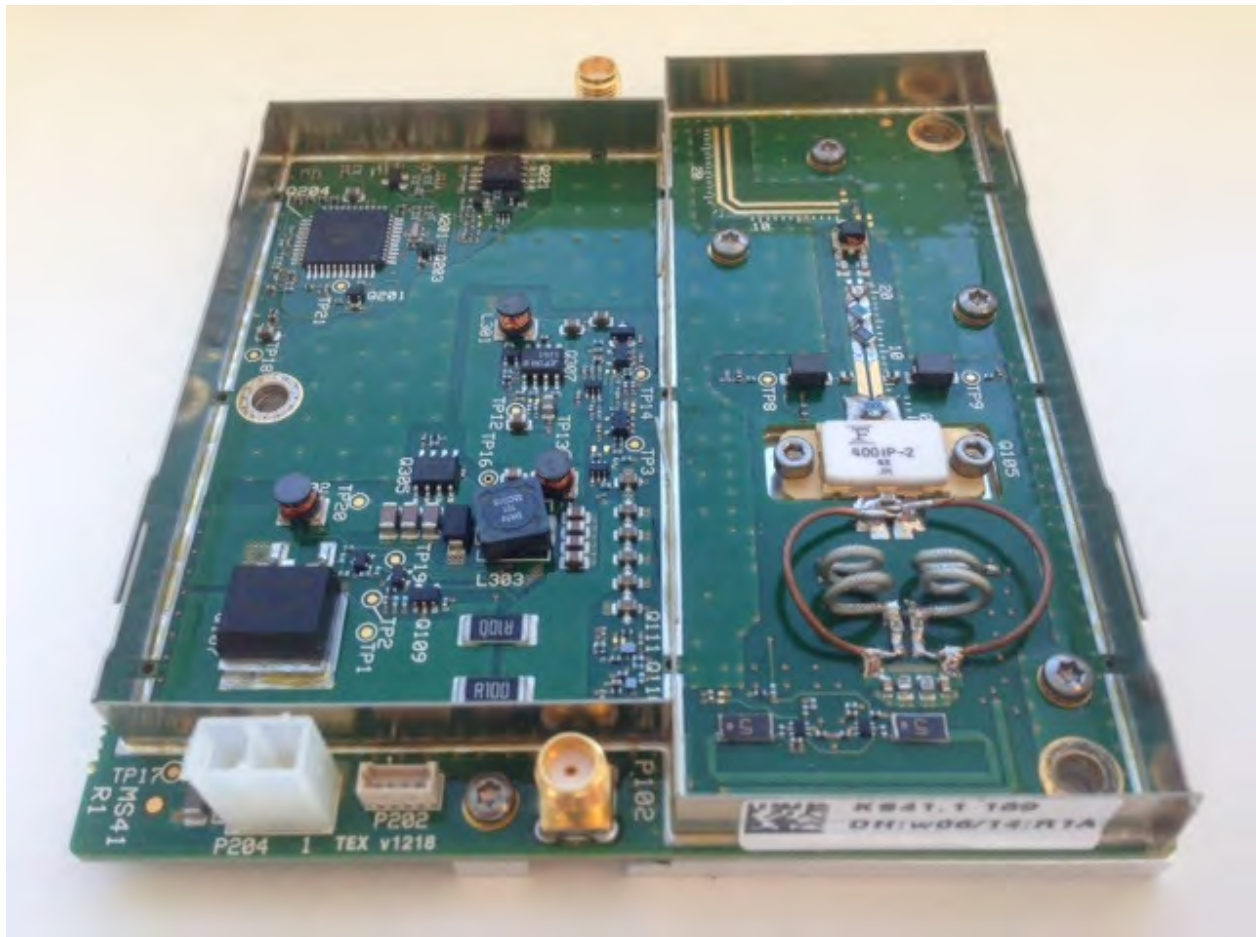


KS28.1 – Back 850 PA

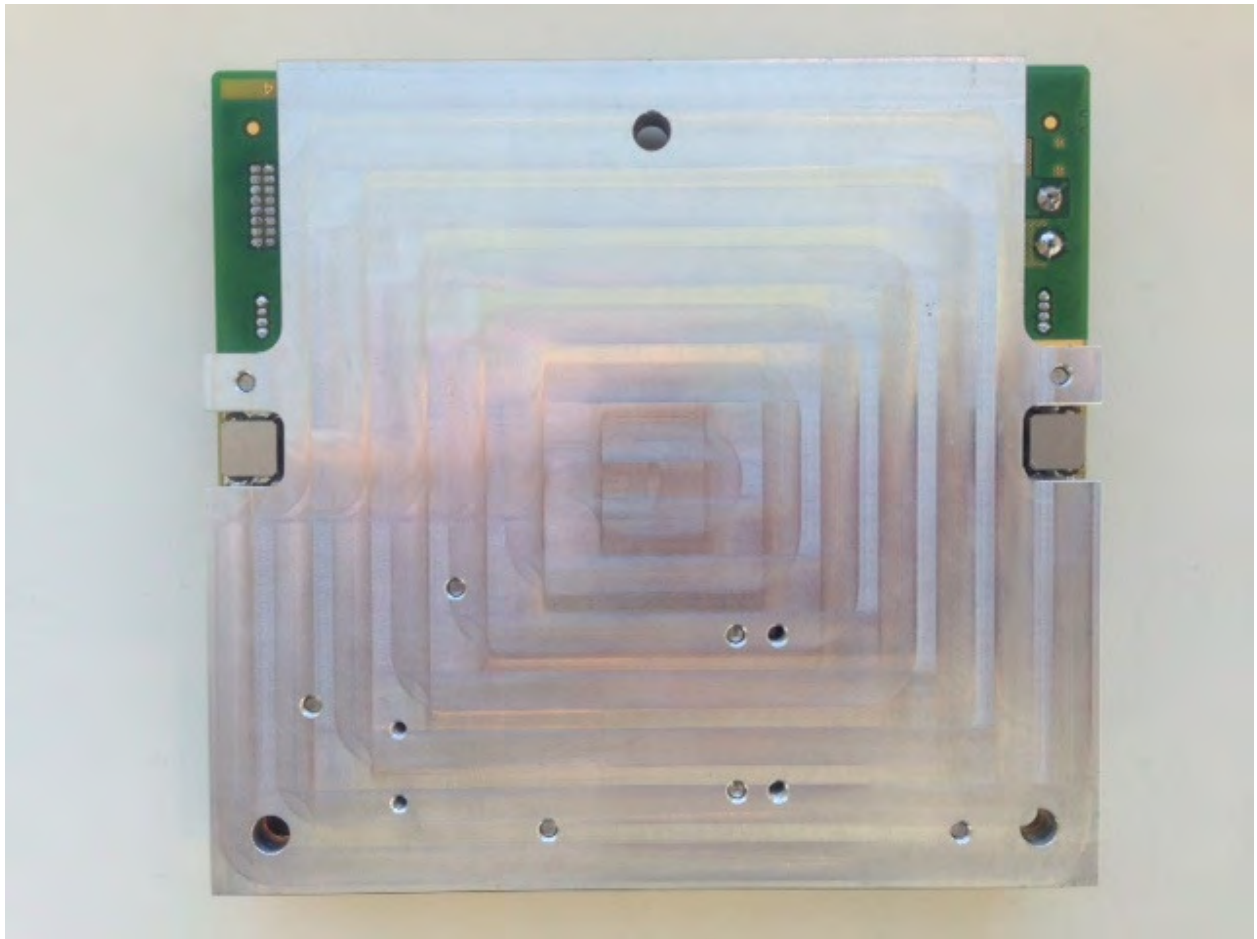




KS28.1 – Side 850 PA



KS41.1 – Side – UHF PA

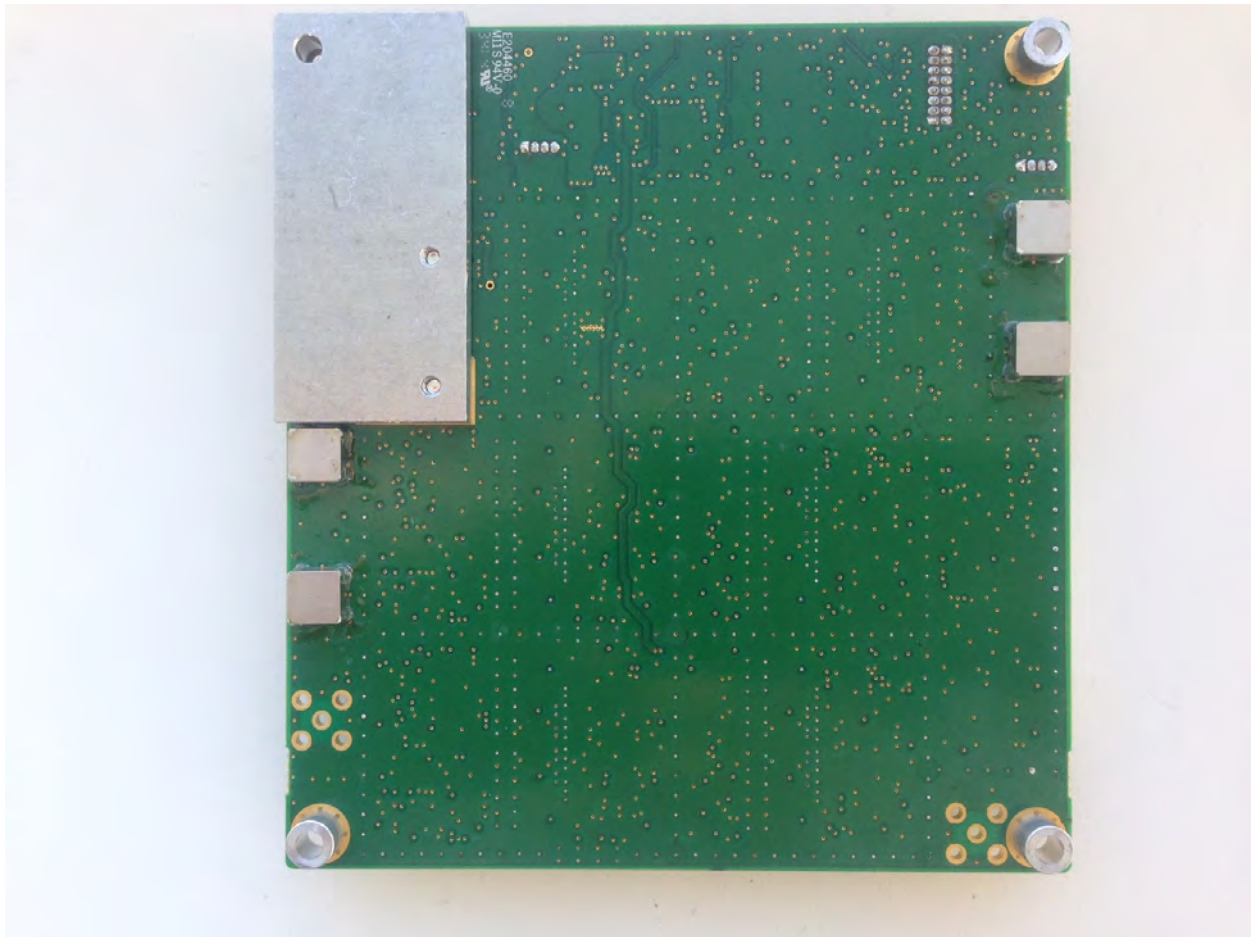


KS41.1 – Bottom UHF PA



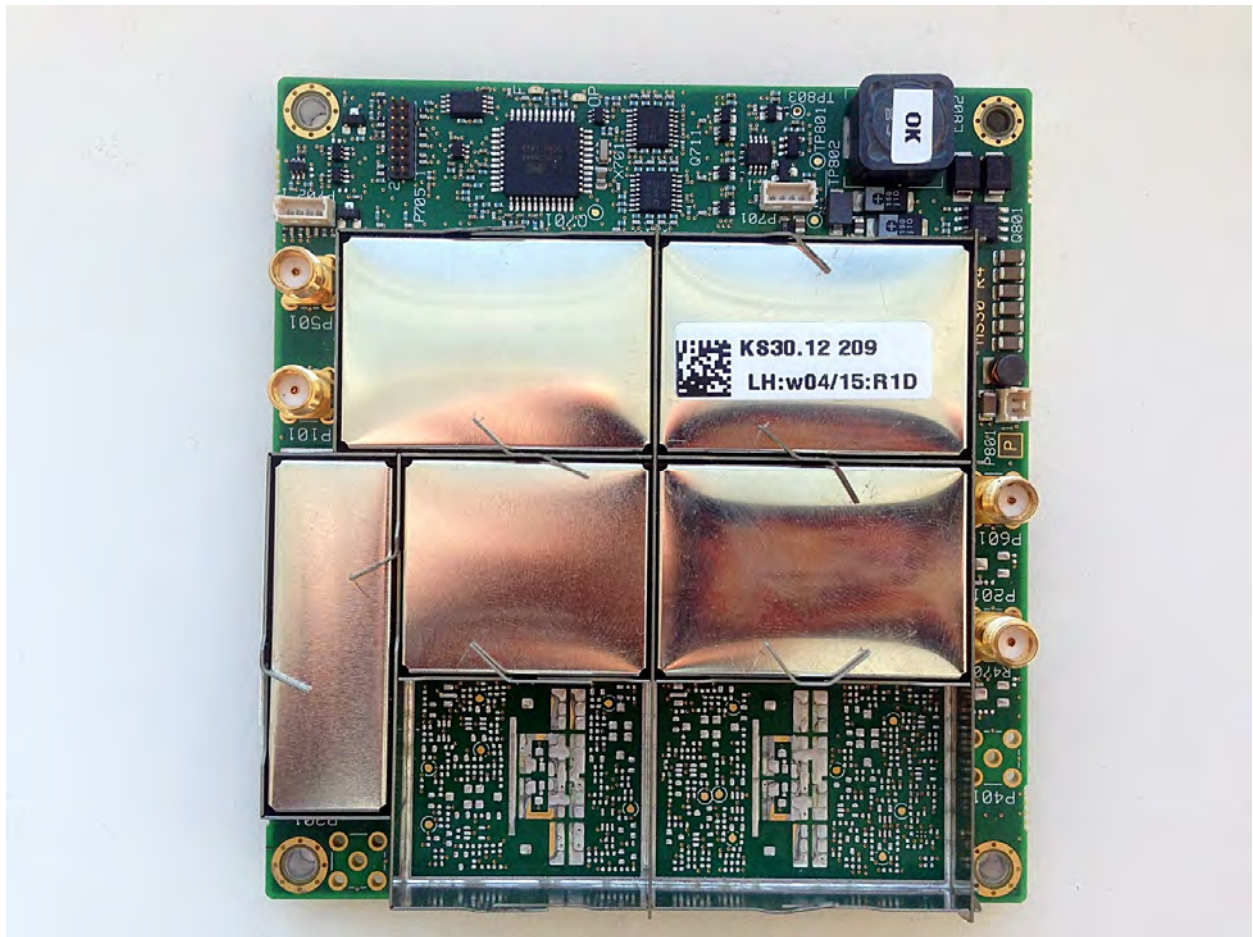


KS30.33 – Top UHF VGA board

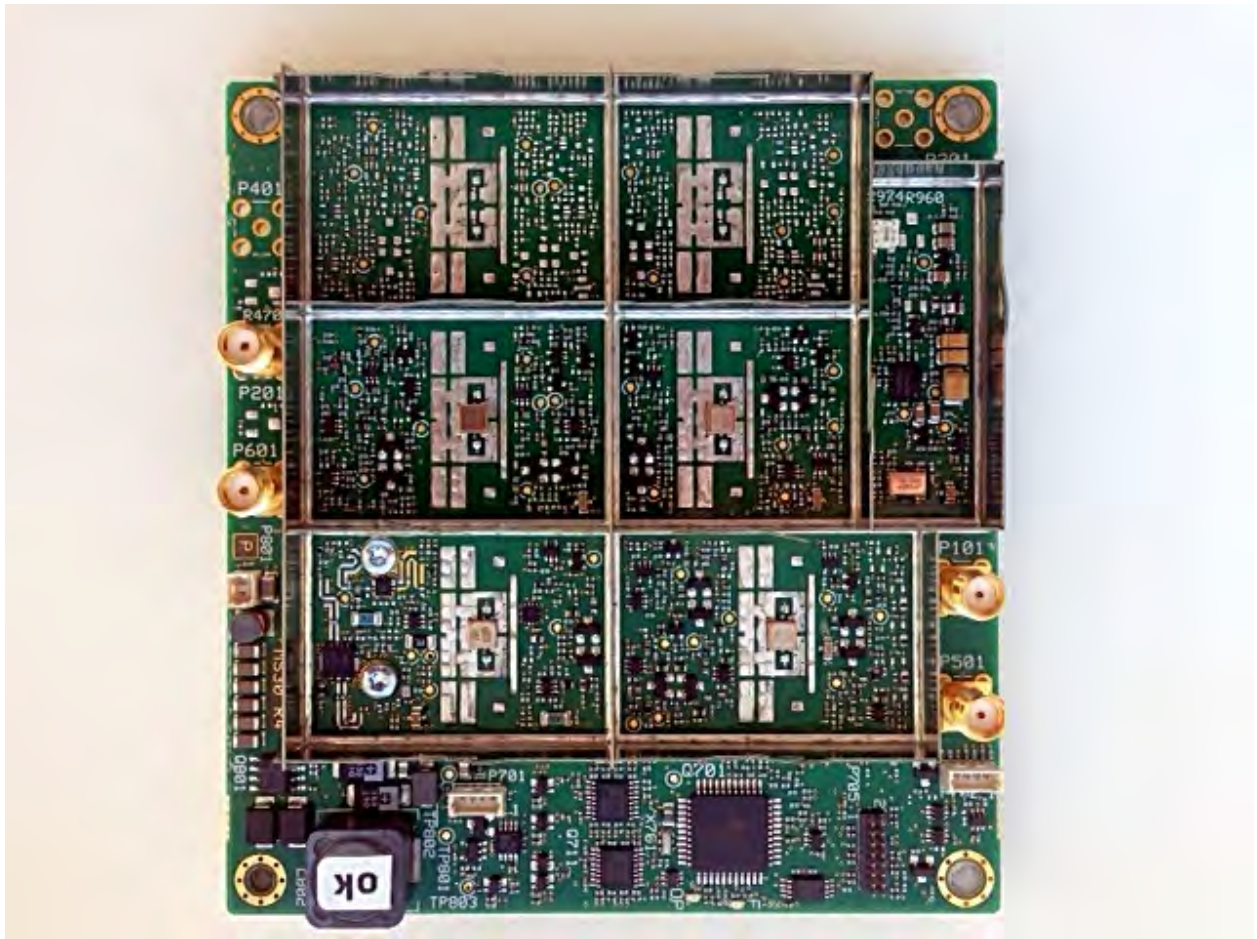


KS30.33 – Bottom UHF VGA Board

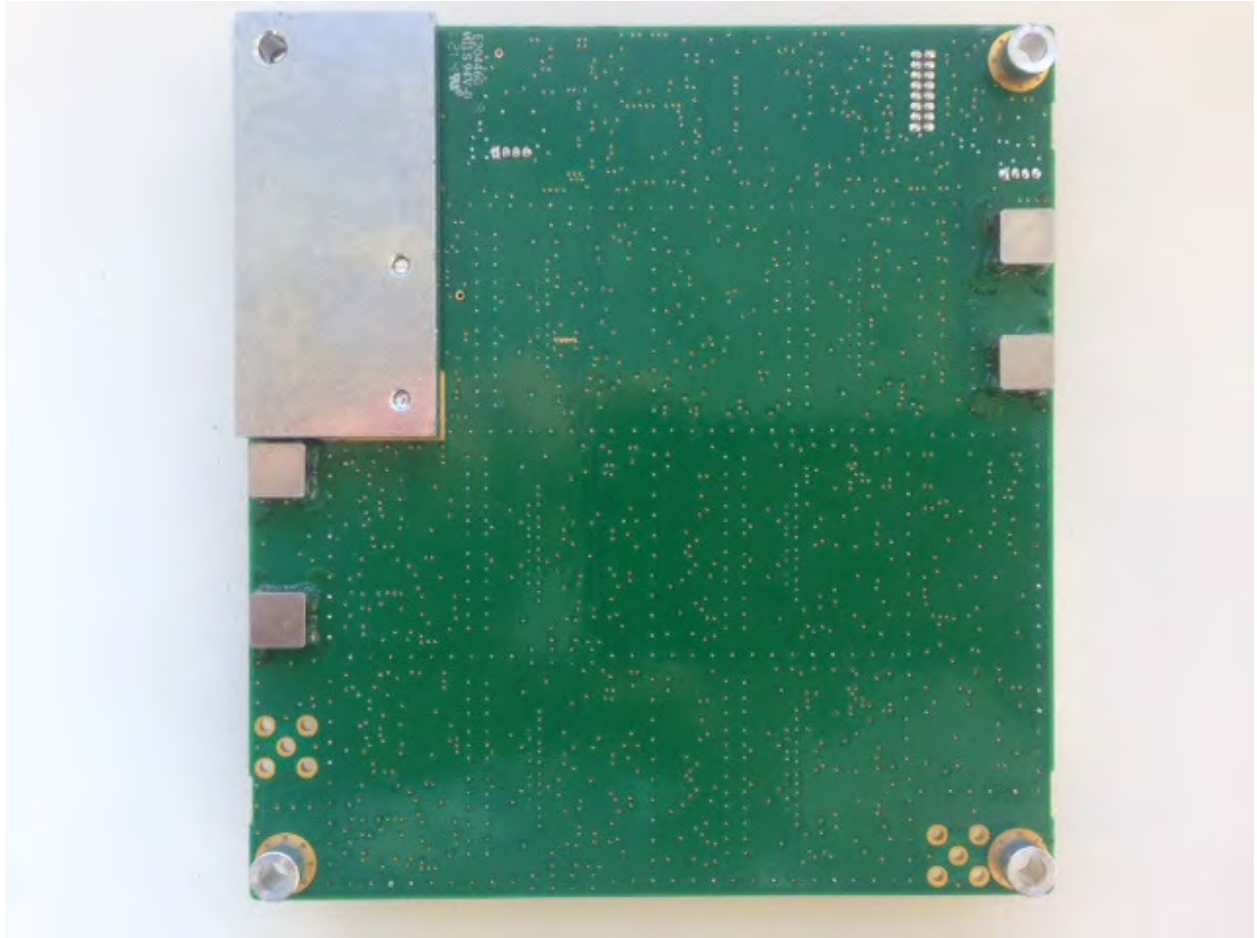




KS30.33 – With Shields UHF VGA Board



KS30.15 – Top 800 VGA board

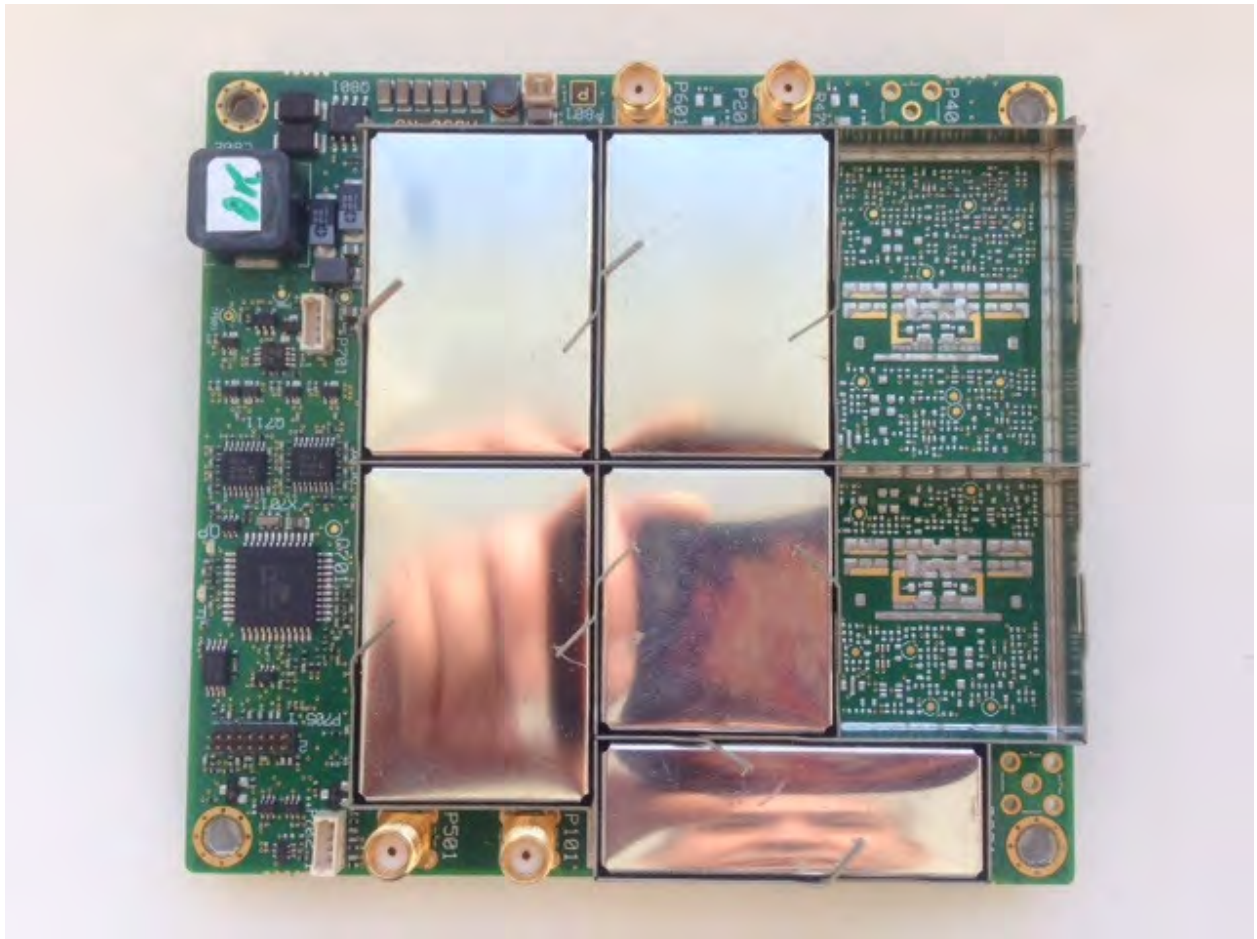


KS30.15 – Bottom 800 VGA board

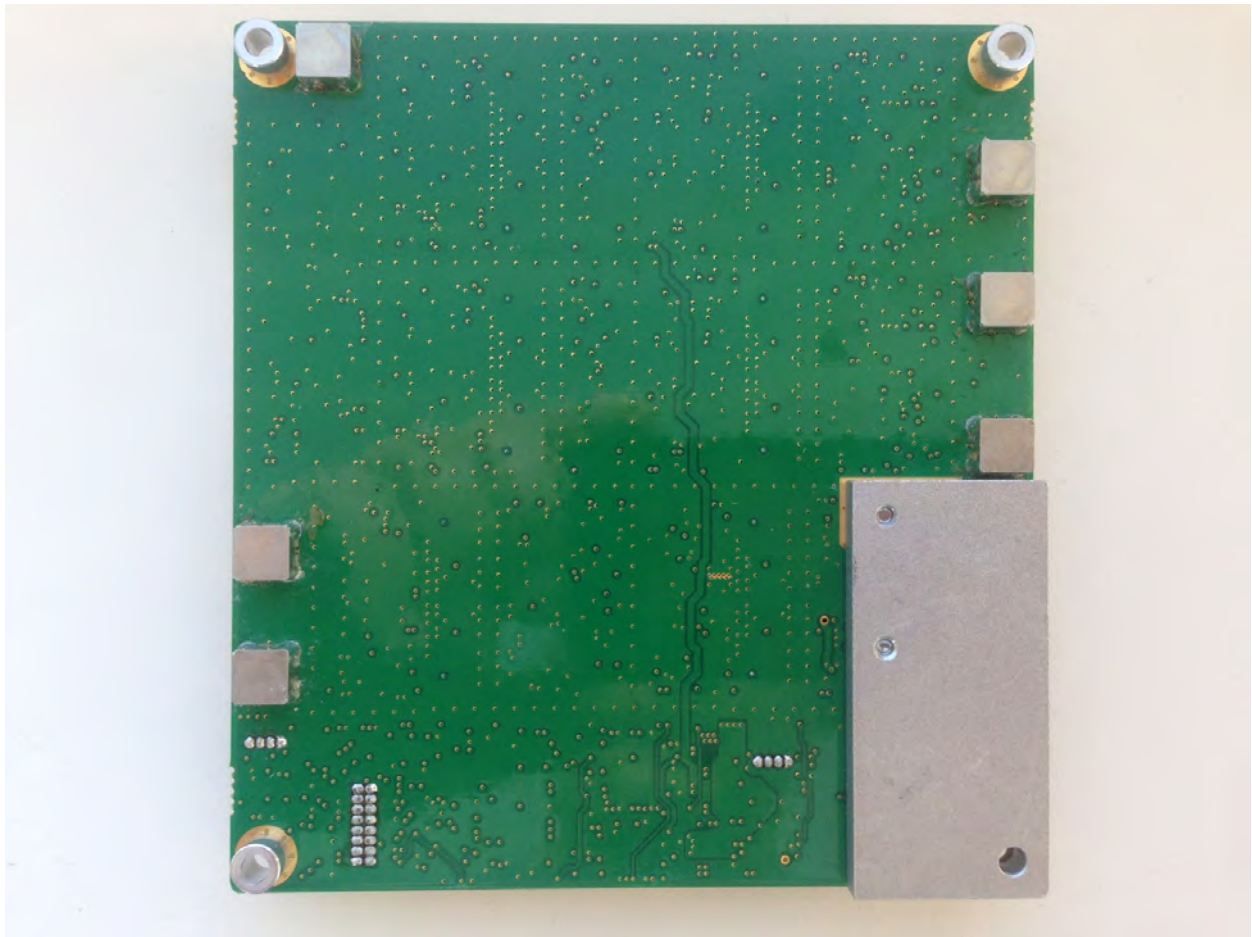




KS30.15 – With Shields 800 VGA board

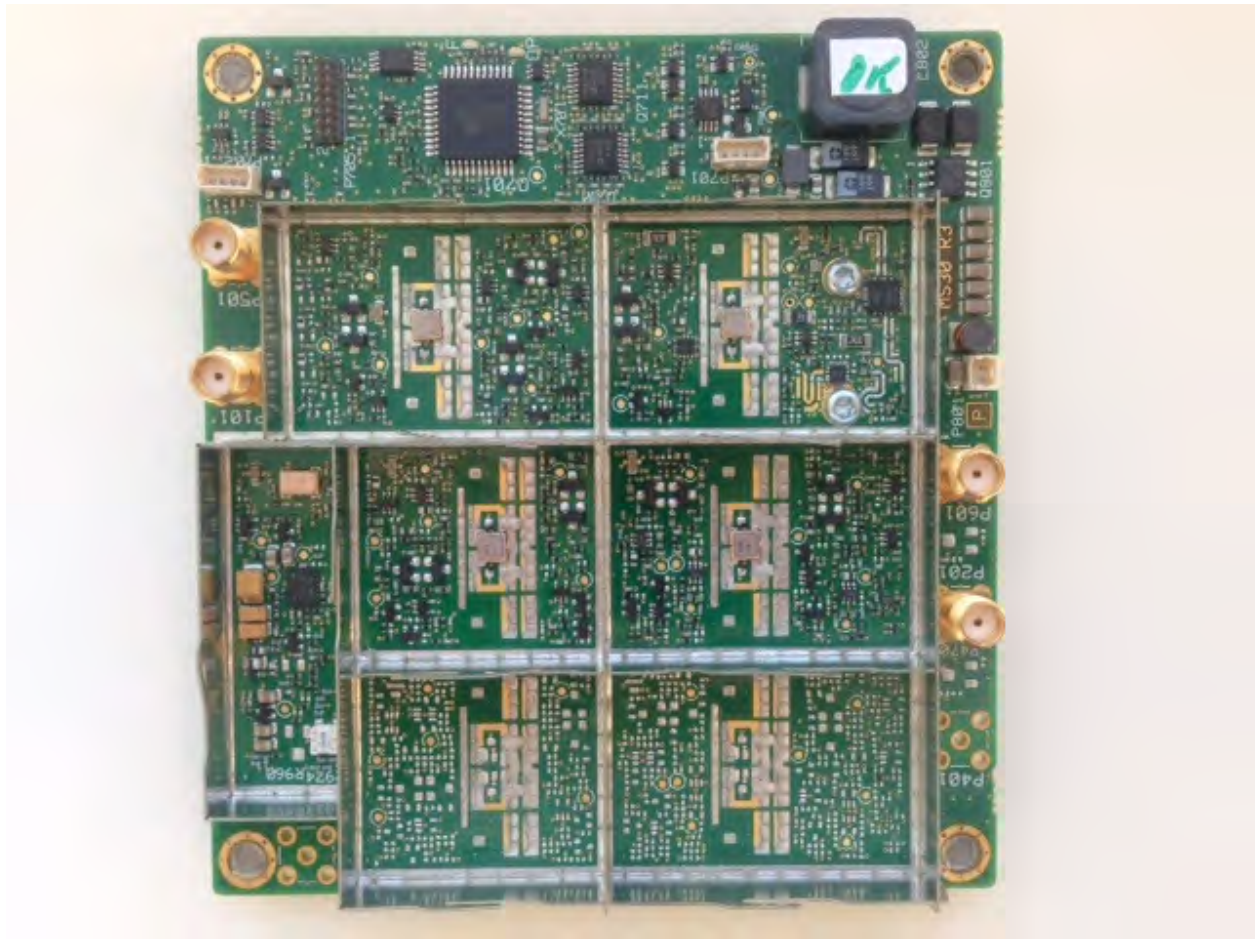


KS30.18 – With Shields



KS30.18 - Bottom

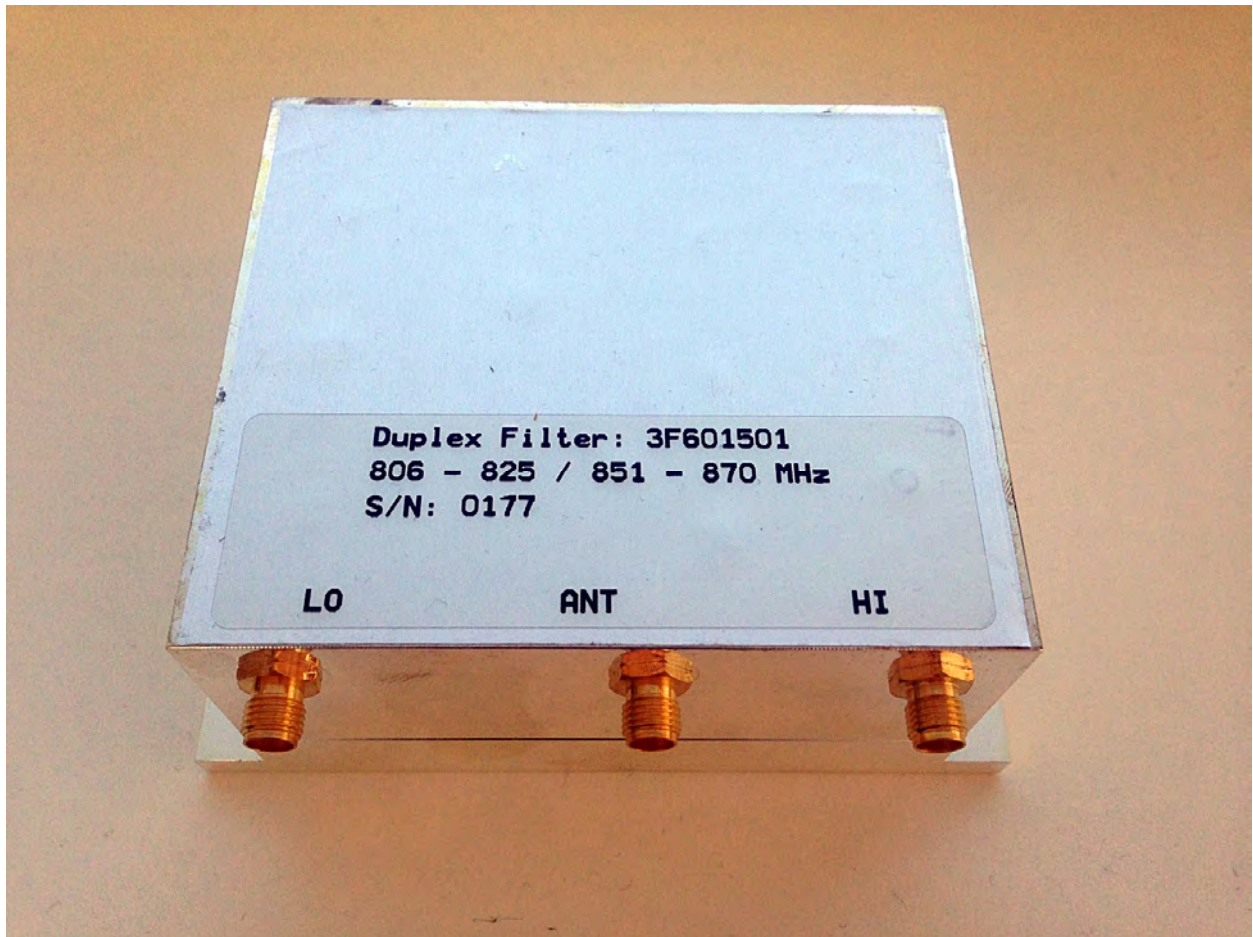




KS30.18 – Top

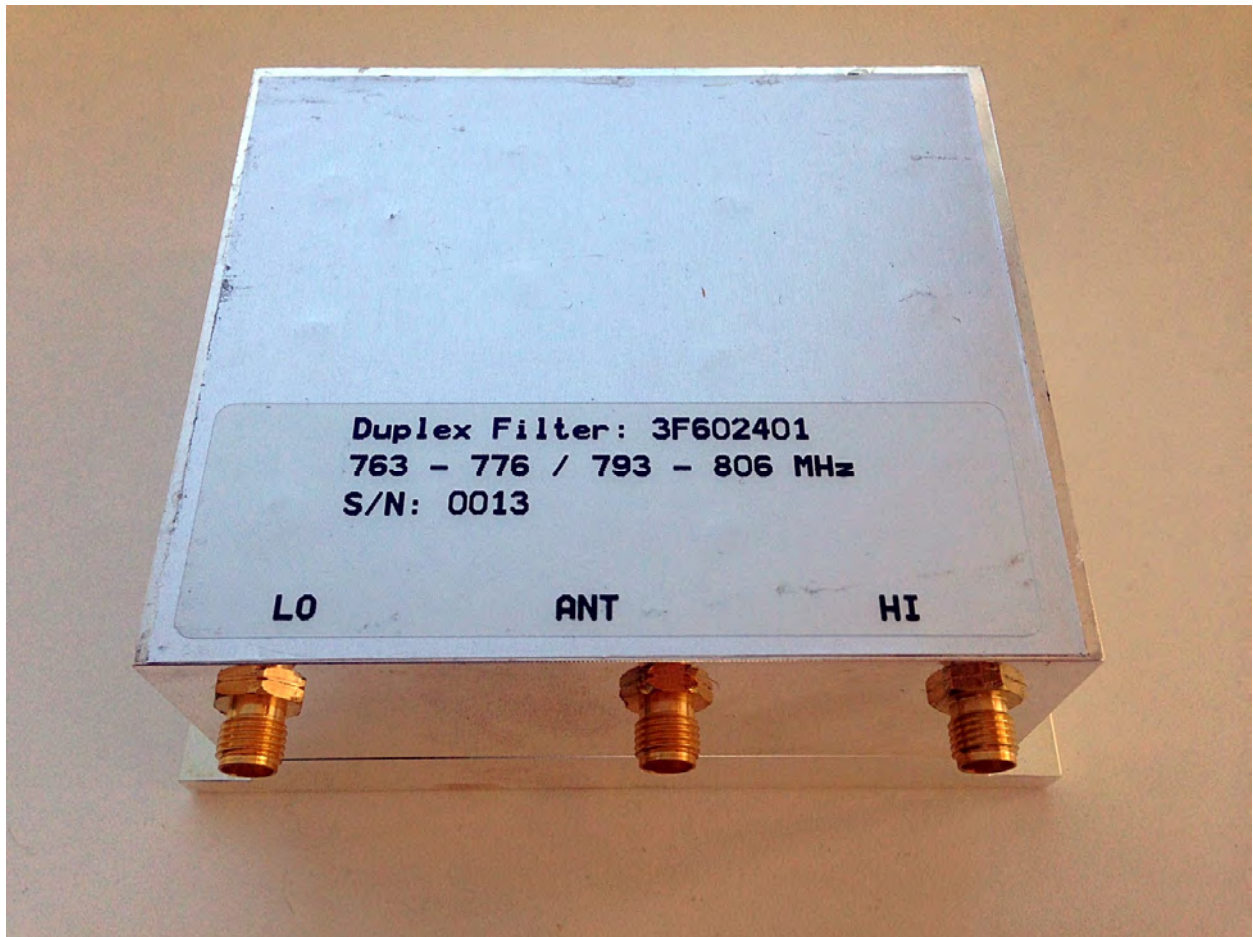


KS30.27 – With Shields



3F601501 – Duplex Filter – 800MHz





3F602401 – Duplex Filter – 700MHz