

Intellitape

USERS MANUAL



Table of Contents

Intellitape Limited Warranty Agreement	2
Hardware.....	3
Button Configuration.....	3
Operation	3
As a stand alone device:	3
With the Genesis software:	3
For comparison measurement:	6
FCC/IC Information and labeling:	7
Intellitape Technical Specifications	8

INTELLITAPE LIMITED WARRANTY AGREEMENT

Chief Automotive Technologies, Inc. warrants for one year from date of purchase any components of its Intellitape which do not perform satisfactorily due to defect caused by faulty material or workmanship. THE WARRANTY DESCRIBED HEREIN SHALL BE IN LIEU OF ANY OTHER WARRANTY, EXPRESS OR IMPLIED, INCLUDING BUT NOT LIMITED TO, ANY IMPLIED WARRANTY OF MERCHANTABILITY, OF FITNESS FOR A PARTICULAR PURPOSE, OF TITLE, OR OTHERWISE ON THE PART OF CHIEF AUTOMOTIVE TECHNOLOGIES, INC. AND MITCHELL INTERNATIONAL REGARDING THE EQUIPMENT, THE SPECIFICATIONS CONTAINED THEREIN OR ANY UNIT THEREOF. Chief's obligation under this warranty is limited to the repair or replacement of components which are defective and which have not been misused, carelessly handled, or defaced by the repair or repairs made or attempted by others. Chief Automotive Technologies, Inc. does not assume responsibility for any injury or property damage resulting from the operator's misuse of this product. Unless a statement made by any representative of Chief Automotive Technologies, Inc. is identified as a warranty, any such statements shall not be construed to constitute warranties and do not form part of the basis of the bargain; it being expressly understood that such statements are merely made in the course of the negotiations of the parties. FURTHERMORE, Chief Automotive Technologies, Inc. specifically excludes or disclaims any warranty, express or implied, based on any sample or model shown by Chief Automotive Technologies, Inc. to the buyer for demonstration purposes only.

LIMITATION OF REMEDIES. The parties agree that the buyer's sole and exclusive remedy against Chief Automotive Technologies, Inc. shall be for the repair or replacement of components which are defective and which have not been misused, carelessly handled, or defaced by the repair or repairs made or attempted by others. The buyer agrees that no other remedy (including, but not limited to, incidental or consequential damages for lost profits, lost sales, injury to person or property, or any other incidental or consequential loss) shall be available to him. This exclusive remedy shall not be deemed as to have failed of its essential purpose so long as Chief Automotive Technologies, Inc. is willing and able to repair or replace defective parts in the prescribed manner.

Prior to the return of any merchandise for a warranty claim, contact the Customer Service Department (800-445-9262) for a Returned Goods Authorization Number and instructions. No goods may be returned without a Returned Goods Authorization Number.

The buyer shall be required to deliver the defective part to Chief Automotive Technologies, Inc. UNLESS (1) the part was destroyed as a result of its defect or of any defect in any part covered in this warranty, AND (2) Chief is reasonably satisfied that the part was defective at the time of its failure.

DISCLAIMER OF WARRANTY

THE GRAPHICS AND DATA SUPPLIED WITH THE INTELLITAPE HAVE BEEN COMPILED FROM AUTHORITATIVE SOURCES. EVERY EFFORT HAS BEEN MADE BY CHIEF AUTOMOTIVE TECHNOLOGIES, INC., TO ASSURE ACCURACY; HOWEVER, MANUFACTURING CHANGES, ERRORS OR OMISSIONS MIGHT OCCUR. CHIEF AUTOMOTIVE TECHNOLOGIES, INC. DOES NOT ASSUME RESPONSIBILITY NOR CAN IT BE HELD RESPONSIBLE FOR THE LOSS OR DAMAGE RESULTING FROM VEHICLE MANUFACTURER'S CHANGES, ERRORS, OR OMISSIONS IN THIS SYSTEM.

Hardware

Button Configuration



SEND - Transmit measurement data to Genesis

ZERO - Used for comparison measurements.

HOLD - Freeze measurement on display.

ON/OFF - Turns power on or off. This is also used to reset the Intellitape back to its nominal length.

IN/MM - Toggle display measurements between inches and millimeters.

NOTE: The Intellitape is programmed with a power saving feature that will turn the display off after 3 minutes of Inactivity.

The Chief Intellitape can be used either as a stand alone device or with Chief's Computerized Measuring software.

Operation

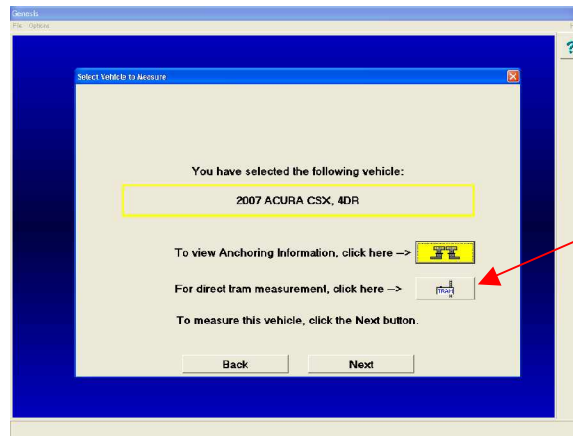
As a stand alone device:

1. Press **ON/OFF** button to turn the unit on.
2. Pull cable to desired measurement length. The measurement will be displayed.
3. All measurements are to be taken from the tip of the front pointer to the tip of the rear pointer.
4. Press **ON/OFF** button to turn the unit off.

With the Genesis software:

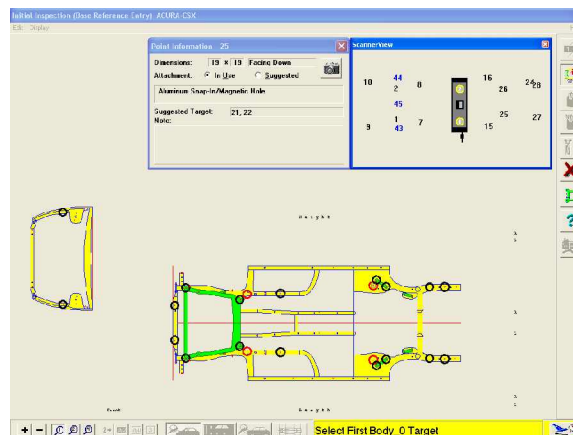
1. Setup Intellitape within Genesis per setup instructions.
2. Press **ON/OFF** button to turn the unit on.
3. Start a measurement and select the appropriate vehicle.
4. Body openings mode can be entered in two ways.

- Click the **TRAM** Button on the opening screen

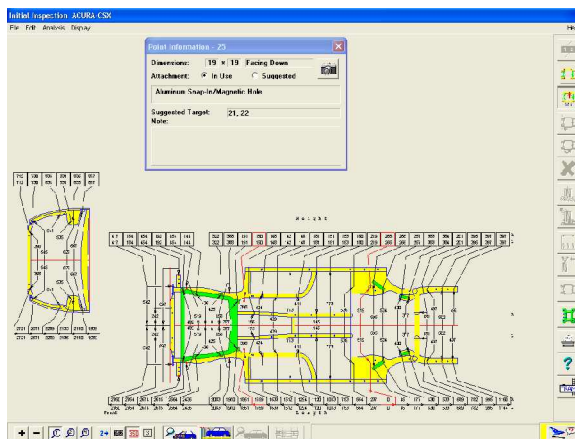


Enter Body
Openings Mode

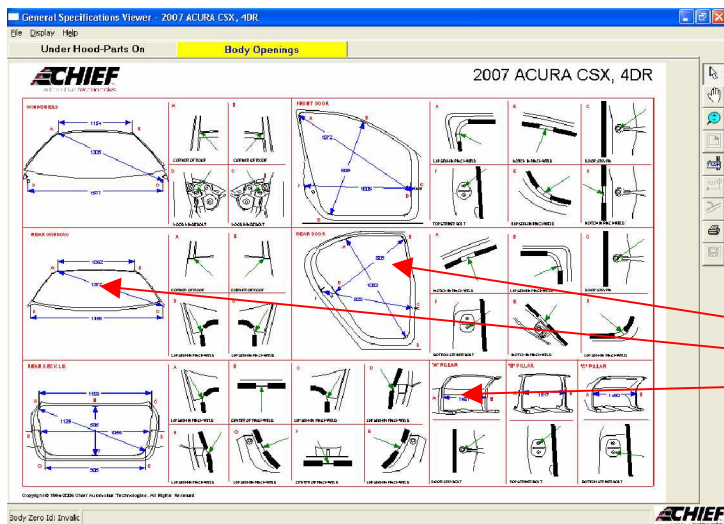
- If you are currently measuring with a scanner, click the Red **X** to stop the scanner mode. Click the **TRAM** icon in the bottom right corner of the screen.



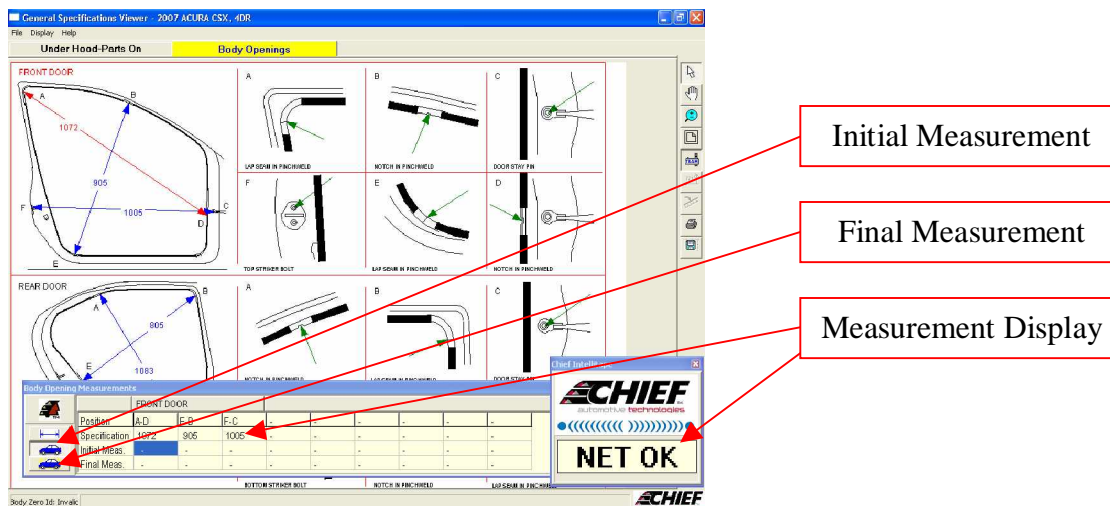
Exit Scanner Mode



- Click the **TRAM** button on the right side of the screen.



- Select the locations on the vehicle that you wish to measure by clicking on the Measurement Reference Line between the two points.
- Click the top button with the car icon on the measurement dialog box to enter Initial measurement mode.



8. Pull cable to desired measurement length. The measurement will be displayed.
9. All measurements are to be taken from the tip of the front pointer to the tip of the rear pointer.
10. Press the **SEND** button on the Intellitape to transmit the measurement to Genesis.
11. Repeat for each selected measurement.
12. Press **ON/OFF** button to turn the unit off.

For comparison measurement:

1. Press **ON/OFF** button to turn the unit on.
2. Pull cable to desired measurement length. . The measurement will be displayed.
3. All measurements are to be taken from the tip of the front pointer to the tip of the rear pointer.
4. Press the **ZERO** button.
5. The Intellitape will now be set to zero at that length.
6. Pull cable to measurement length to be compared. The difference between the two measurements will be displayed.
7. Press **ON/OFF** button to turn the unit off. This will also take the Intellitape out of comparison mode.

FCC/IC Labeling information:

This device complies with Part 15 of the FCC Rules. Operation is subject to the following two conditions: (1) This device may not cause harmful interference, and (2) this device must accept any interference received, including interference that may cause undesired operation.

The following FCC, IC label can be found on the back cover of Intellitape hand held measuring device.

CHIEF AUTOMOTIVE TECHNOLOGY
MODEL #IT0408
IC: 7601A-IT0408 FCCID:V5B-IT0408

The term "IC:" before the radio certification number only signifies that Industry Canada technical specifications were met.

The users manual or instruction manual for an intentional or unintentional radiator shall caution the user that changes or modifications not expressly approved by Chief Automotive for compliance could void the user's authority to operate the equipment.

FCC and IC Radiation Exposure Statement for Portable Devices

This equipment complies with FCC and IC radiation exposure limits set forth for an uncontrolled environment. This equipment is in direct contact with the body of the user under normal operating conditions. This transmitter must not be co-located or operating in conjunction with any other antenna or transmitter.

Intellitape Technical Specifications

Features

- Compliant with Zigbee Specifications
- Wireless Connection Distance 10 Meters
- Low Power Consumption

Specifications

- Model Number IT0408
- Standards Zigbee, USB
- Operating Frequency 2.4 ~ 2.48GHz
- Display 8x2, Backlit, LCD Display
- Transmitted Power 1.47dBm
- Antenna 4.1dBi
- Voltage, Power Supply 3.5 – 6.5VDC

Environmental

- Dimensions 8.0" x 2.5" x 2.0"
- L x H x D (203.2 mm x 63.5 mm x 50.8 mm)
- Unit Weight .76 lbs (.34 kg)
- Certifications FCC, IC, CE, CSA
- Operating Temp 32° - 122°F (0° - 50°C)
- Warranty 1 Year Limited Warranty



P.O. Box 1368
Grand Island, Nebraska 68802-1368
Phone: 308-384-9747
Fax: 308-384-8966

www.chiefautomotive.com

Chief reserves the right to alter product specifications and/or package components without notice, excluding changes to components subject to FCC & IC regulations.