



TOP OF TRANSMITTER

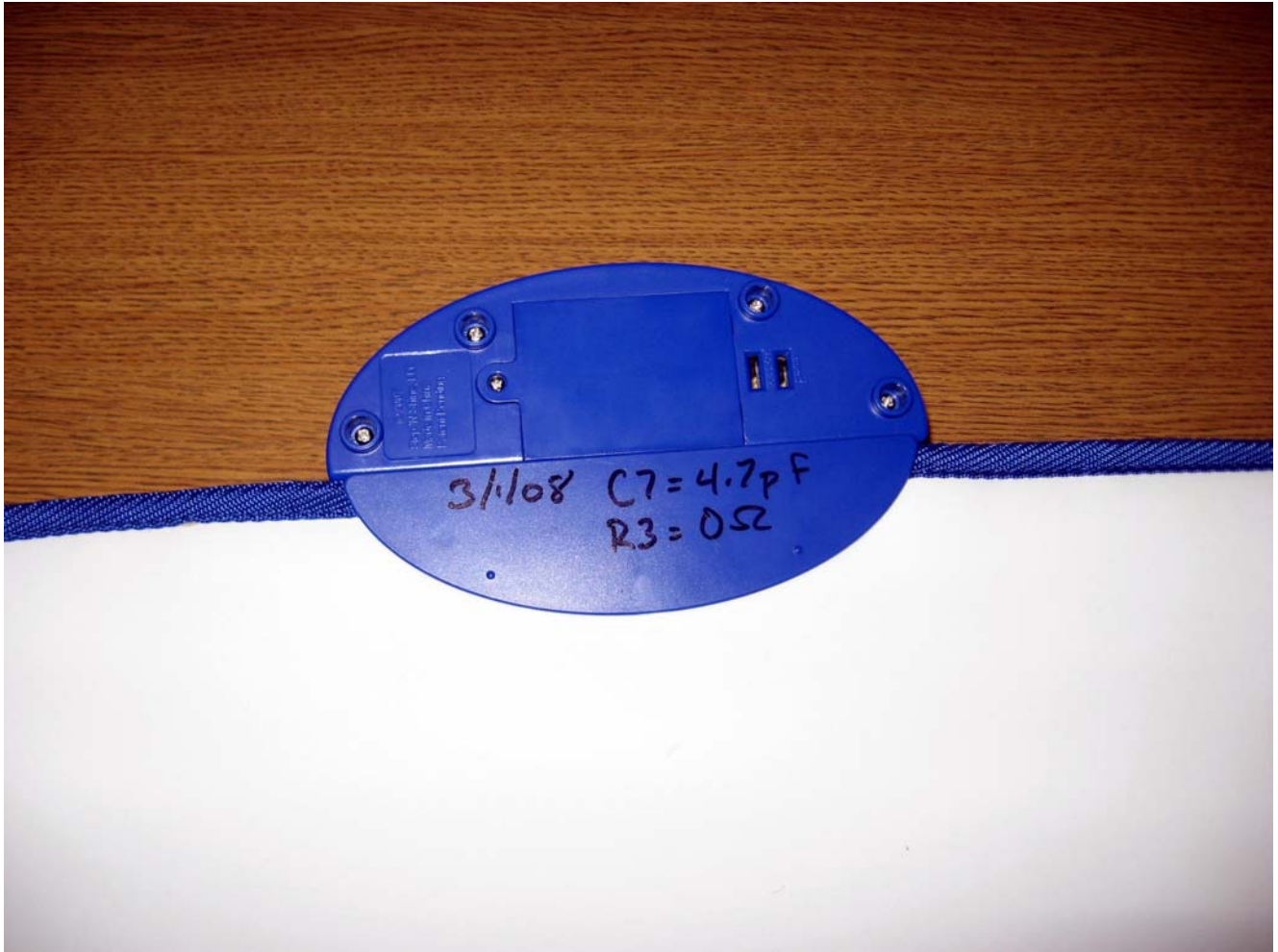


CLOSE-UP OF TOP



BOTTOM OF TRANSMITTER



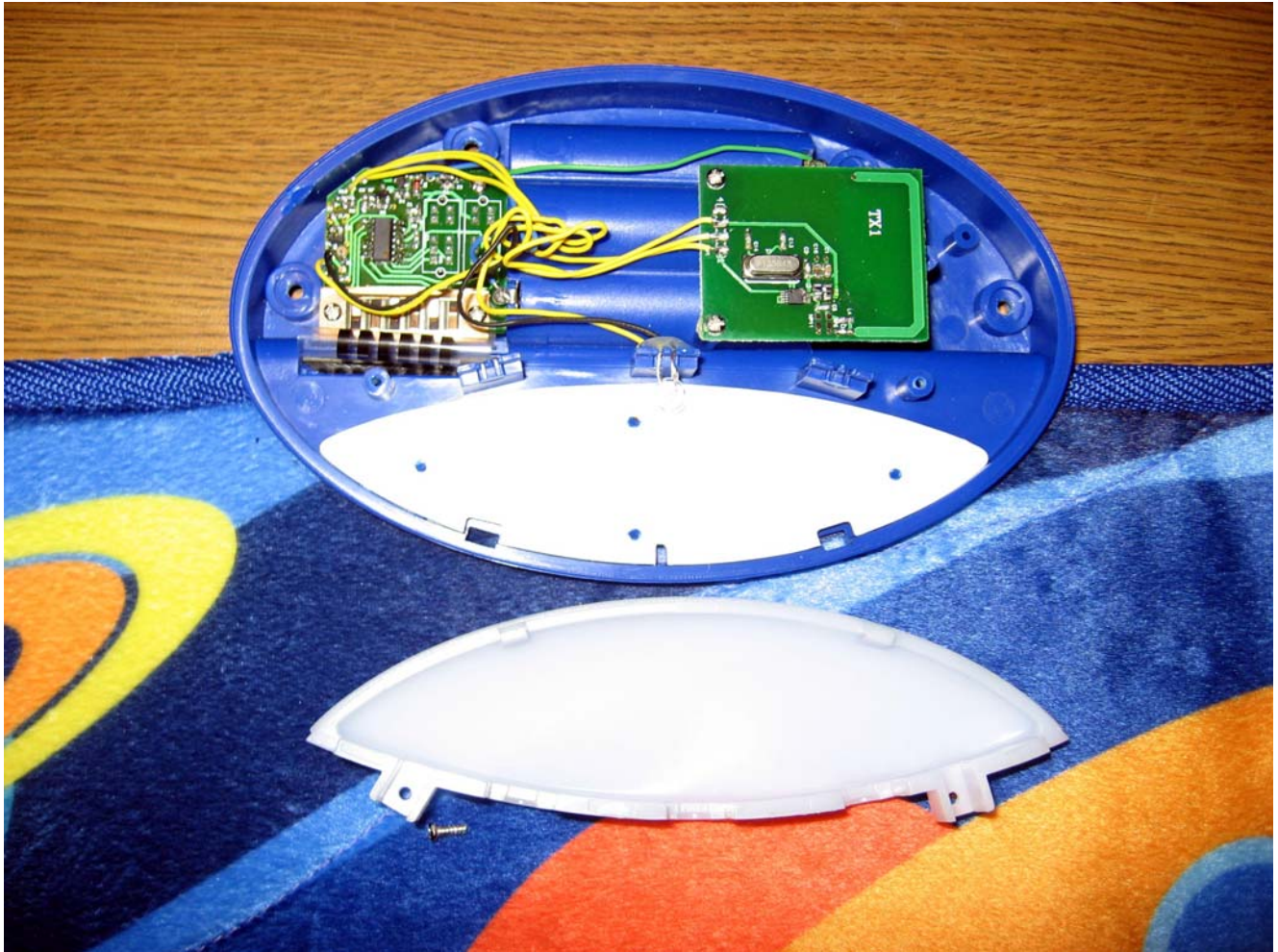


CLOSE-UP OF BOTTOM

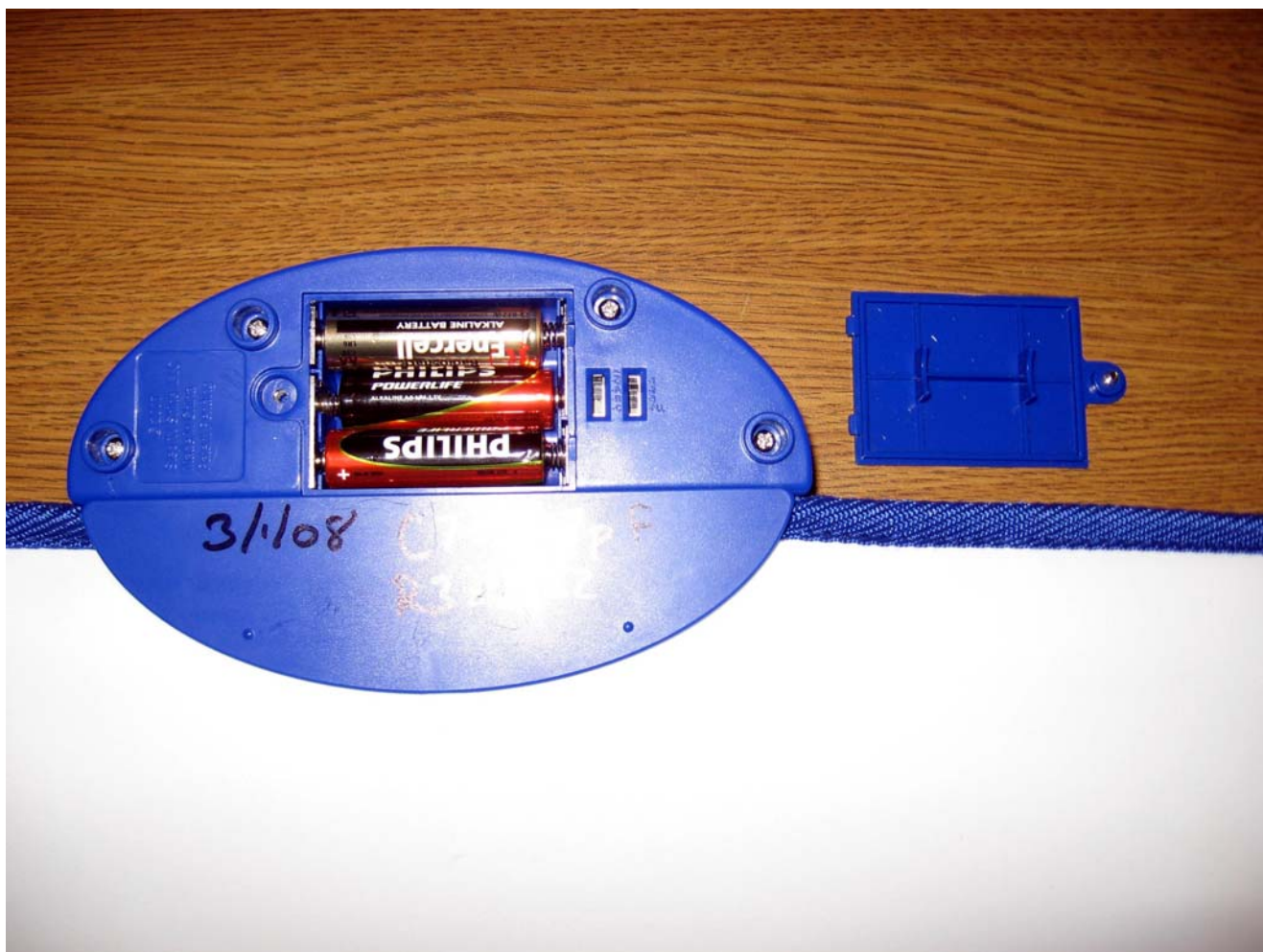


TOP COVER REMOVED



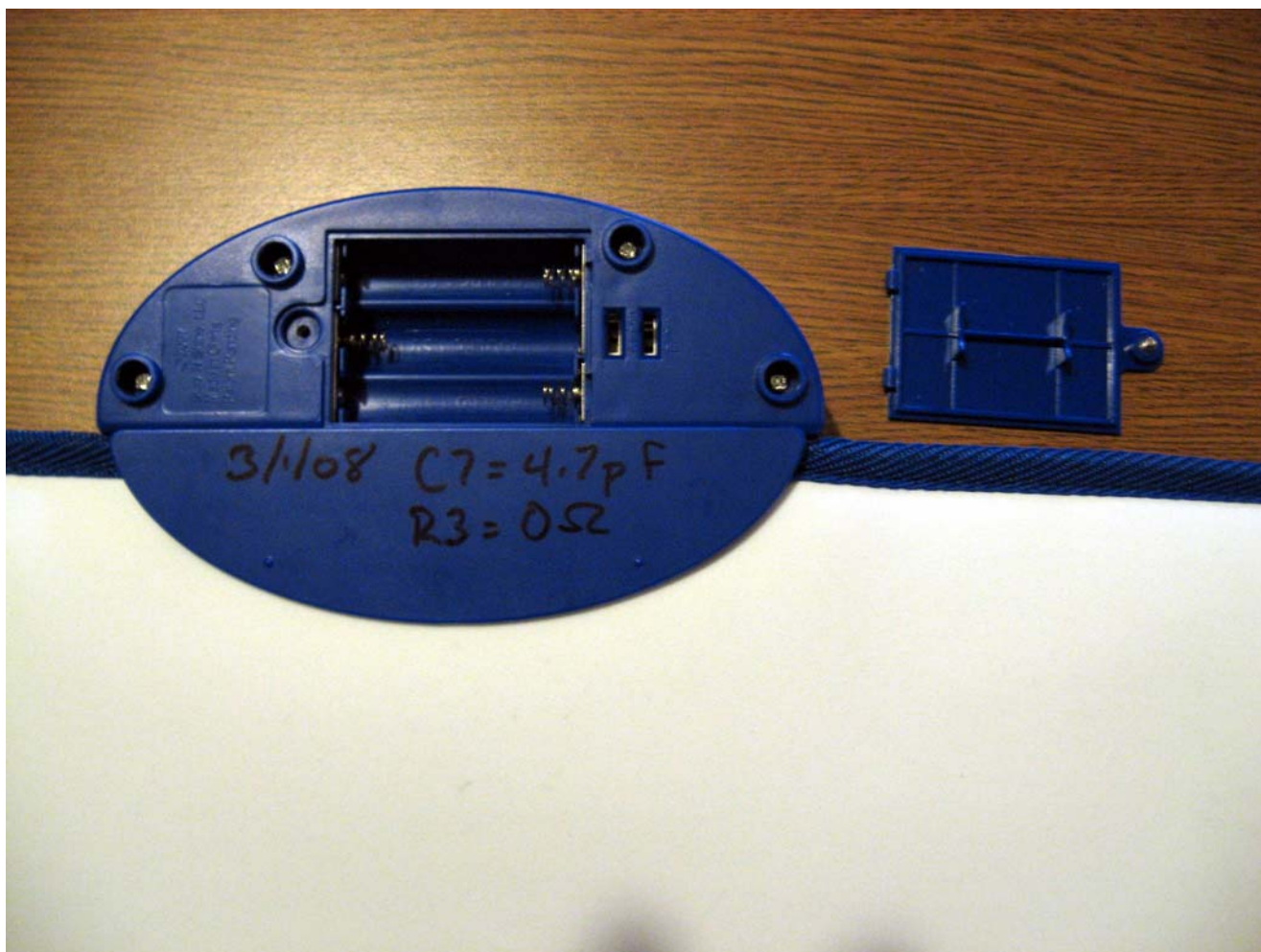


LIGHT COVER REMOVED



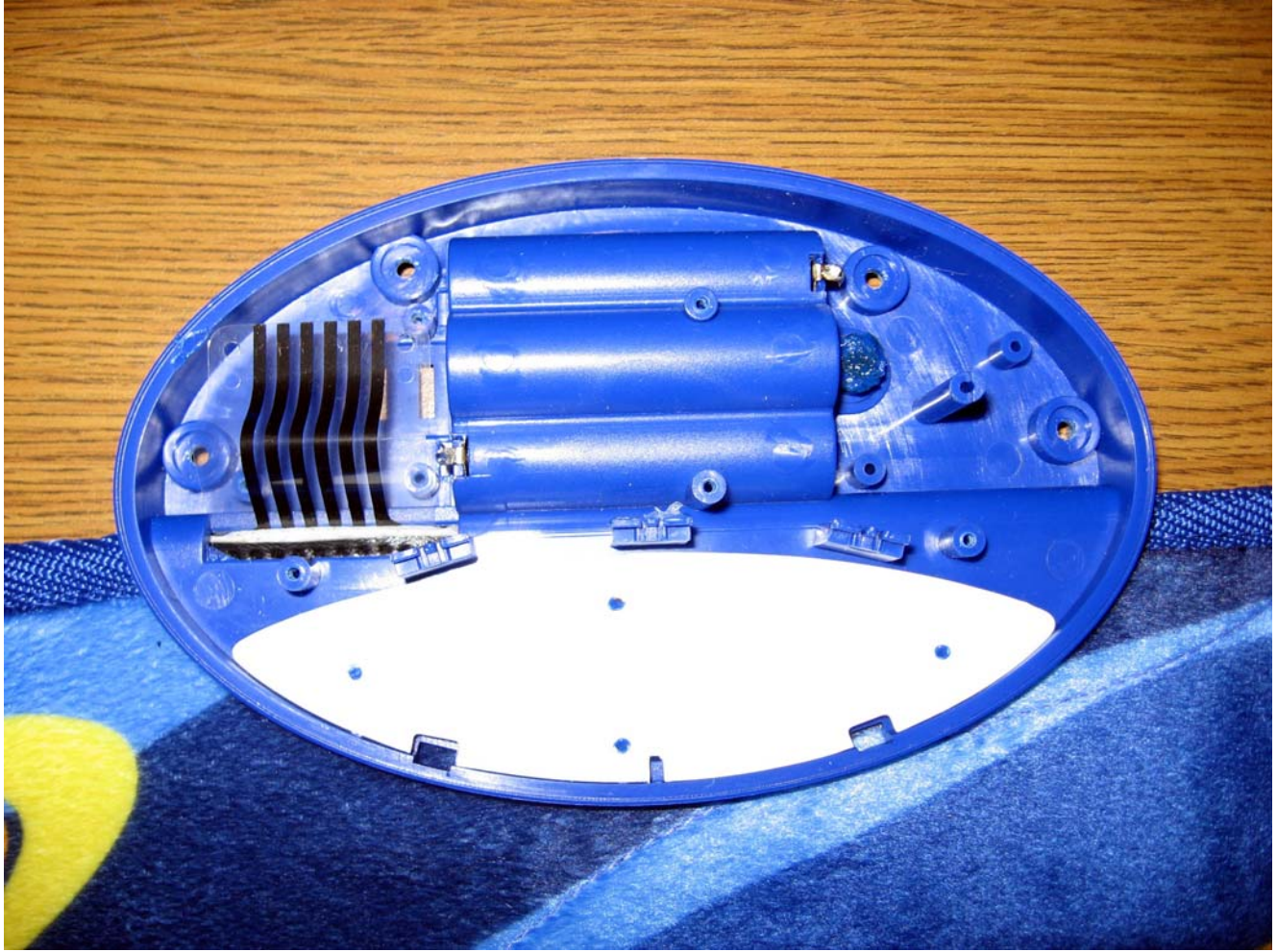
BATTERY COVER REMOVED





BATTERIES REMOVED





CIRCUIT BOARDS REMOVED