

keeping kids safe



pool alarm **system**
Installation Guide **1**

Thank you for purchasing poolnanny™

You have made an excellent decision choosing our product. Systemax Safety Systems, Inc. has created the most innovative system to efficiently protect your children from the swimming pool's intrinsic dangers, assisting the parents with their supervision.

Please, read the User Guide carefully and get the complete Installation Guide from www.mypoolnanny.com **before** using and installing the system.

If you have any question or for information on professional installation please feel free to contact our customer service department.

Thank you again from all of us.
Systemax Safety Systems, Inc.



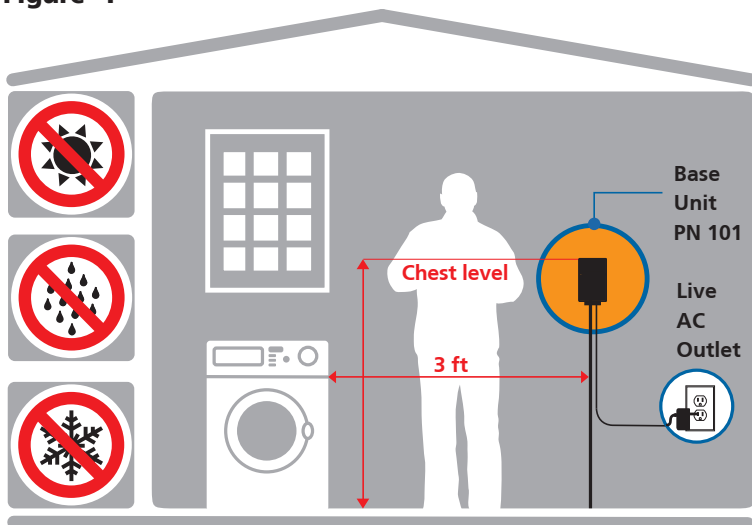
113 Magnolia Ave,
Westbury, NY 11590, USA.

Tel 1-800-520-5970
service@systemax.net
www.mypoolnanny.com

Installation

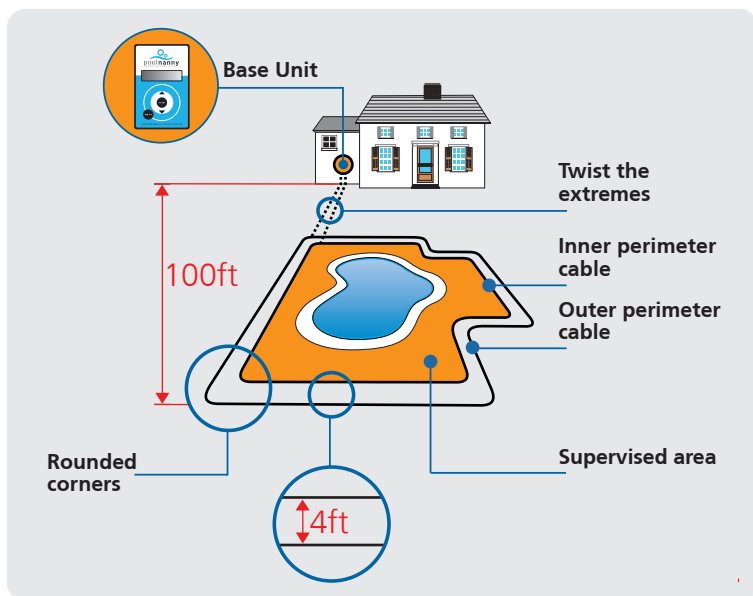
- 1 Install the Base Unit: (see **figure 1**).
 - In a dry, well ventilated area, protected from rain and direct sunlight.
 - In an area where temperatures do not fall below freezing.
 - Secured to a stationary surface using appropriate mounting hardware (use template provided on a separate sheet).
 - At least 3 ft. from large metal objects or appliances as these items may interfere with the signal consistency.
 - Not beside cordless phone receptacle.
 - At chest level or higher.
 - Within 100 ft. of the farthest point of the supervised area.
 - Near an AC outlet.

Figure 1

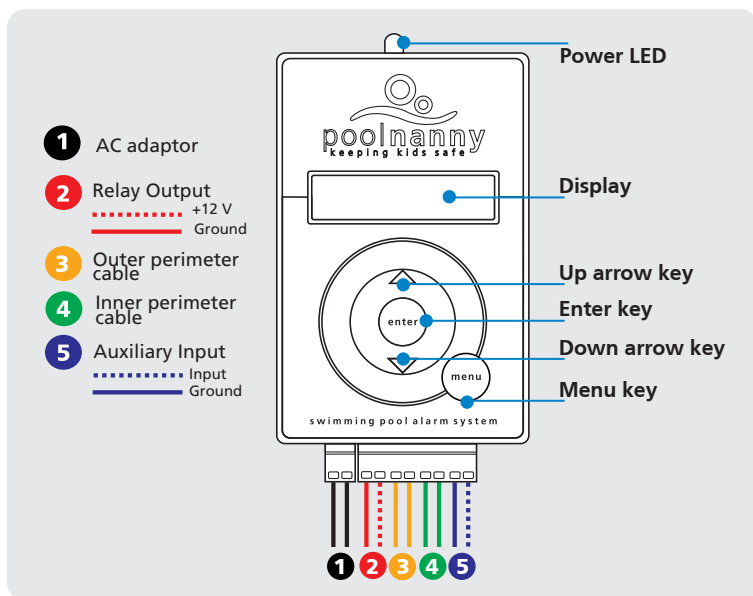


- 2 Do not locate the Base Unit where it can accidentally be unplugged or power from the outlet switched off. The Base Unit will not sound the alarm if not plugged in to a live AC outlet.
- 3 Bury two loops of wire one or two inches deep around the supervised area, running them parallel to each other. It is recommended to keep a distance of about 1.2 m (4 ft.) between them. The area can have any shape, but the corners should be rounded. Twist both extremes of each wire run from the supervised area to the Base Unit (see **figure 2**).

Figure 2



- 4 Connect the perimeter wires to the Base Unit (see **figure 3**). The perimeter wires may exit the building where the Base Unit is located, via a window or through a hole drilled through the wall. Ensure the drill path is clear of any utilities. Make sure the perimeter wire is not cut off or pinched by a window, door, or garage door, as this can damage it over time.
- 5 Although the Base Unit has a buzzer that sounds when the alarm is activated, it is recommended (this is required by ASTM) to connect a siren or another warning signal to the relay output of the Base Unit (see **figure 3**). The device you connect

Figure 3

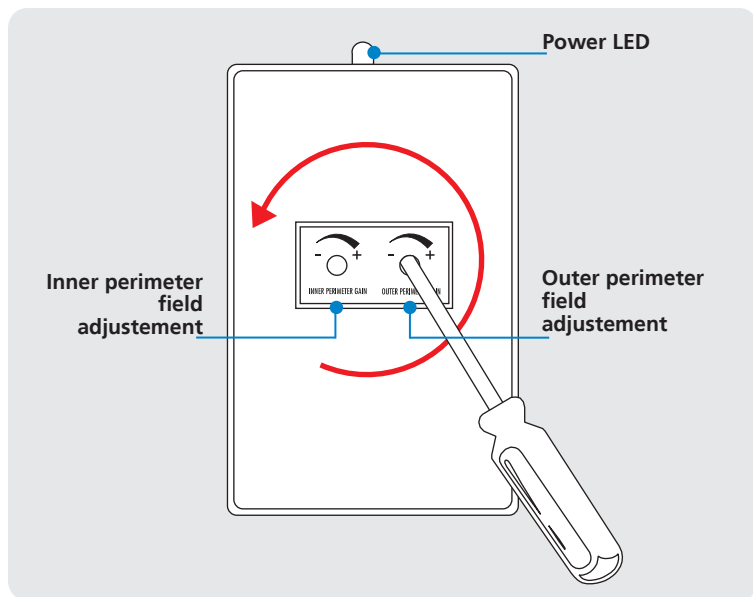
will be powered with 12 VDC when the alarm is on.

- 6 If you are going to make use of the auxiliary input, connect it to the Base Unit (see **figure 3**).

Calibration

Make sure there are no ID Tags inside the supervised area. Connect the AC adaptor to a wall outlet and plug the other end to the Base

Figure 4. Base Unit - rear view -



Unit. The Base Unit will display the legend “SYSTEM READY”. Reach the trimming potentiometers from the rear of the Base Unit, through the back cover, with a plastic screwdriver, and turn them fully counterclockwise for minimum electromagnetic field in the vicinity of the perimeter wires (see **figure 4**). Adjust the right (seen from the back, with the power red LED upwards) gain control so that the green LED in the Set-up Tester (see **figure 5**) turns on as you approach the outer perimeter cable with the Set-up Tester in hand. Repeat the procedure, using the left gain control and the yellow LED in the Set-up Tester, for the inner perimeter cable.

Figure 5
Set Up Tester



- This device acts like a Supervisor ID Tag in relation to the entire Pool Nanny system.
- To operate the device, turn it on using the switch located on the side of the cabinet. The green and yellow LED's will blink for one or two seconds and then the red (“Power on”) LED will become lit.
- **Green LED:** lights when the device is near the outer perimeter cable and the central unit is in normal mode.
- **Yellow LED:** lights when the device is near the inner perimeter cable and the central unit is in normal mode.
- **Red (“Transmit”) LED:** flashes every time the device reports its position to the central unit.

Supervisor ID Tags registration

Power up the Base Unit by plugging an AC adaptor (12 V, 1 A, AC or DC) connected to a wall outlet.

Using the menu key, record the supervisor devices that will be used in the supervised area (see menu option "REC. SUPERVISOR" below).

Testing the system

Once the system is installed, the warning signal can be tested by using the "TEST HORN" menu option (see menu options below).

You can also make a rough estimate of the quality of the transmission between an ID Tag and the Base Unit, if you enable the display of the number of packets received every 4 seconds by the Base Unit (see "SHOW COUNT" menu option below).

Integration with other sensors

The Base Unit's auxiliary input can be used to connect another sensor or system, such as a motion detector, so that when there is a low electrical resistance in this input (like when a switch closes), Pool Nanny™ will activate the warning signal/s (siren and/or another device) connected to it.

You must enable the auxiliary input (see the menu option below) if you want to take advantage of this capability.

Menu options

Press <menu> to enter the menu, and the arrow keys to see the menu options available. To enter a menu option, press <enter>. To leave a menu option, press <menu>. An explanation of each menu option follows.

1

SETUP
REC. SUPERVISOR

<enter>

SEARCHING...

(packet received)

FOUND --> <ID>
<position in Base Unit memory>

NOTE: It will display "LIST FULL" if the Base Unit's memory is full.

If you press <enter> while in this mode, the Base Unit will search for a Supervisor ID Tag inside the supervised area to record its ID, if it finds one. The search is stopped if a Supervisor ID Tag is found or if the user presses the <menu> key for a number of seconds. If a Supervisor ID Tag is found, the Base Unit will display its ID and its position in the Base Unit memory for 2 seconds.

2

SETUP
DELETE REMOTE

<enter>

DELETE REMOTE
0) <ID>

<enter>

DELETING --> <ID>

If you press <enter> while in this mode, the Base Unit will display the list of the registered Supervisor ID Tags, one at a time, numbered from 0 to 9. You can scroll through the list using the arrow keys. When you press <enter> while an ID is being displayed, it will be deleted from the Base Unit memory.

3

SETUP
ENABLE auxIN

<enter>

ENABLE auxIN
STATUS--> ON

<enter> or <▲> or <▼>

ENABLE auxIN
STATUS--> OFF

In this mode, the user can enable ("STATUS--> ON") or disable ("STATUS--> OFF") the auxiliary input, using <enter> or the arrow keys.

This input can be used to turn on the Base Unit buzzer and any device connected to the relay output.

4

SETUP
TEST HORN

<enter>

TEST HORN
STATUS--> ON

<enter> or <▲> or <▼>

TEST HORN
STATUS--> OFF

In this mode, the user can turn on ("STATUS--> ON") or off ("STATUS--> OFF") the device connected to the relay output, using <enter> or the arrow keys.

5

SETUP
SHOW COUNT

<enter>

SHOW COUNT
SHOW COUNT

You can use <enter> or the arrow keys to enable or disable the display of the number of packets received by the Base Unit from the ID Tags.

When "SHOW COUNT" is selected, the second line of the

<enter> or <▲> or <▼>

TEST HORN
STATUS--> OFF

Example

POOL NANNY
SUPERVISED 10-5

This means that in the last 4 seconds, the Base Unit has received 10 packets from Supervisor ID Tags and 5 packets from Supervised ID Tags.

display will show, besides the other legends, the number of packets received every 4 seconds from Supervisor ID Tags, a hyphen and then the number of packets received from Supervised ID Tags. See **example**.

This can help estimate the quality of the transmission between an ID Tag and the Base Unit.

6

SETUP
SHOW CLOCK

<enter>

SHOW CLOCK
SHOW CLOCK

<enter> or <▲> or <▼>

SHOW CLOCK
HIDE CLOCK

The display of the local time can be enabled or disabled entering this menu option and using <enter> or the arrow keys. See the following option to set the current time.

7

SETUP
ADJUST CLOCK

<enter>

ADJUST CLOCK
00:00

Use the arrow keys to increase or decrease the number of minutes or the number of hours.

<enter>

ADJUST CLOCK
00:00

To change the focus from minutes to hours or vice versa, press <enter>.

8

SETUP
EXIT?

Use this option to leave the menu and put the Base Unit in the "SYSTEM READY" state.

<enter>

EXITING

CAUTION

This device is not intended to replace any other safety consideration; that is, adult supervision, lifeguards, fences, gates, pool covers, locks, and so forth, and some devices may not detect gradual entry.

Systemax Safety Systems, Inc. shall NOT be liable for any property damage, personal injury, economic or non-economic loss or ANY damages, consequential or otherwise, sustained, caused or incurred as a result of any type of failure of the poolnanny™ system and/or installation.

FCC

This device complies with Part 15 of the FCC Rules. Operation is subject to the following two conditions: (1) this device may not cause harmful interference, and (2) this device must accept any interference received, including interference that may cause undesired operation.