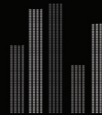


IceRage®
How cool is this!

Virtuu USA

- 205 Broadway St. Terrace Level Frederick, Md 21701
- Tel : 1-866-966-9744 / Fax : 301-473-9751
- Web : www.icerage.net



Ultimate Mouse

Bluetooth Technology





Features of Ultimate Mouse



Wireless freedom with Bluetooth Technology

- Ultimate Mouse allows wireless connection with a Bluetooth-enabled PC within a 30ft (10m) range.



Multifunctional button

- Ultimate Mouse lets you move through long documents quickly, listen to your favorite songs stored in your PC, access your personal files and business files or browse the web.



Air-mouse presenter

- Ultimate Mouse controls powerpoint presentation wirelessly. A red laser pointer and presentation functions can be used from up to 30ft (10m) away from the PC allowing everyone to see when presenting important documents.



Sleek and Stylish design

- It sports a comfortable handy size and style for the PC user who demands a stylish mouse that is comfortable to use and to carry.

Contents

Getting started	• What's in your package?.....6
6	• Ultimate Mouse overview.....6
	• Button functions.....8
	• LED indicator.....8
Setting up Ultimate Mouse	• Charging the battery.....9
9	• Turning Ultimate Mouse on/off.....10
	• Pairing Ultimate Mouse with a PC.....11
Using Ultimate Mouse	• Using Ultimate Mouse in the hand.....12
12	• Using Ultimate Mouse on the desk.....12
	• Using the keyboard function.....13
	• Using the FN button.....14
	• Presenter function.....14
	• Media player function.....15
	• Other functions.....16
Appendix	• Additional care and maintenance.....17
17	• Troubleshooting.....17
	• Pairing Ultimate Mouse with a PC using Microsoft software.....18
	• Specifications.....20
	• FCC.....21
	• CE.....21
	• Warranty.....22



Safety information

Before using your new Ultimate Mouse please read this manual thoroughly to ensure that you know how to safely and efficiently use the features and functions of your new Ultimate Mouse.



Do not disassemble, repair or alter Ultimate Mouse yourself.

You risk electric shock and damaging the internal circuit board of Ultimate Mouse.



Never use a damaged USB charging cable.

It may cause a potential risk of malfunction.



Do not drop, knock or shake Ultimate Mouse.

Rough handling can damage Ultimate Mouse.



Keep Ultimate Mouse away from heat and extended exposure to direct sunlight.

Extended exposure to heat or direct sunlight may cause malfunction.



Avoid using Ultimate Mouse in proximity with Radio Frequency emitting equipment (i.e. TV, microwaves).

Radio Frequency emitting equipment may cause interference with Ultimate Mouse connections.



Use Ultimate Mouse with Bluetooth-enabled PC within a 30ft (10m) range.

Beyond this range, Ultimate Mouse will not operate properly.



Never project the laser beam directly at the eyes of people.

Direct exposure to a laser beam is dangerous.



Never look or stare directly into the optical sensor which is emitted from the bottom of Ultimate Mouse.

Prolonged direct exposure to the optical sensor can be hazardous to the eyes.



Do not point a laser pointer at a mirror-like (reflective) surface. A reflected beam can act like a direct beam and be hazardous to the eyes.



Keep out of reach of children.



Keep Ultimate Mouse dry.

Humidity or moisture can damage Ultimate Mouse and may cause electric shock. If Ultimate Mouse gets wet, wipe off with a dry cloth and allow it to dry completely.



Turn Ultimate Mouse off when traveling on commercial airlines due to FCC regulations regarding radio emitting devices.

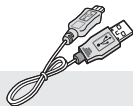
GETTING STARTED

What's in your package?

Actual products may look slightly different from the illustration shown below. The number of each accessory is indicated in parentheses.



Ultimate Mouse (1)



USB charging cable (1)

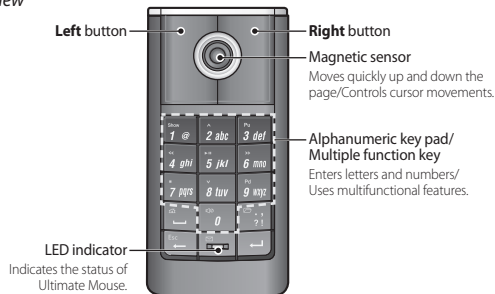


User manual (1)

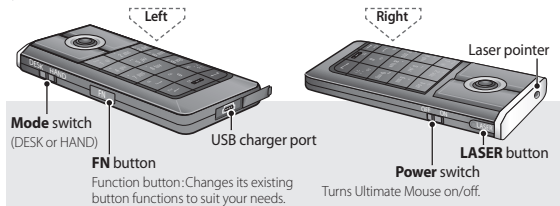
Ultimate Mouse overview

Carefully unpack your new Ultimate Mouse, and check Ultimate Mouse to make sure it is not damaged.

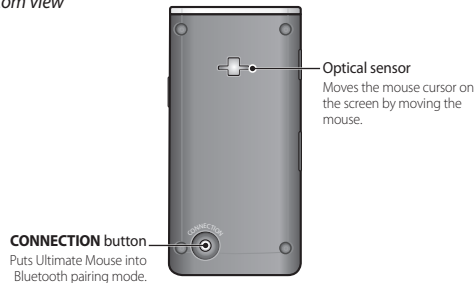
Top view



Side view



Bottom view



Note

System requirements

Supported Operating System	Microsoft Windows 98/2000/ME/XP/Vista/MAC OS
Hardware	Bluetooth-enabled PC/laptop/MAC product
USB port	Charge only

GETTING STARTED

Button functions

Press the buttons you want to use function.

Button	Operation
Left	<ul style="list-style-type: none"> • Single clicking <ul style="list-style-type: none"> - Selects/draggs and drops/moves the cursor in text processing programs. - Backward a web page. • Double clicking <ul style="list-style-type: none"> - Executes or opens the object.
Right	<ul style="list-style-type: none"> - Provides you with quick access to some functions. - Forward a web page.
Magnetic sensor	<ul style="list-style-type: none"> - Provides convenience when navigating a document by scrolling. - Controls mouse cursor movements in Hand mode. - Use the magnetic sensor as a 4-way key side to side and up and down when you press the FN button.
Mode	Set mode. (See page 12 for instructions.)
FN	Function button: Changes its existing button functions to suit your needs. (See page 14 for instructions.)
Power	Turns Ultimate Mouse on/off.
LASER	Projects a red dot of light from the laser pointer to highlight an item shown.
CONNECTION	Setting up Ultimate Mouse to pair with a Bluetooth device.

LED indicator

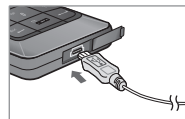
LED indicates the current status of Ultimate Mouse.

What you see	Status
Red on	Battery charging
Red blinking	<ul style="list-style-type: none"> - Ultimate Mouse is in pairing standby mode. - Battery low
Green on	FN button feature operates.
Green blinking	No Bluetooth connection
Blue on	Battery fully charged.
Blue blinking	Every 1 second Ultimate Mouse is being paired and being used. Entering a capital letter Every 3 seconds Entering a lower case letter
Off	<ul style="list-style-type: none"> - Ultimate Mouse is in Sleep mode. - Power is off.

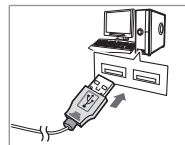
SETTING UP ULTIMATE MOUSE

Charging the battery

Ultimate Mouse has an internal, non-removable rechargeable lithium-ion polymer battery. Make sure to fully charge it before first use.



- 1 Plug the USB mini-B tip into the USB connector port of Ultimate Mouse.



- 2 Connect the other end to the USB port of the PC.
 - The LED will turn red to indicate that battery is charging.
 - When fully charged, the LED will change to blue.

Caution • When the battery is low, red LED blinks at 3-second intervals and a short beep will sound at 15-second intervals.

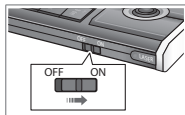
Note

- You can use Ultimate Mouse while being charged. Once the battery is charged, disconnect the USB charging cable from Ultimate Mouse.
- Only use the USB charging cable provided in this package. The use of non-original equipment may result in loss of performance and damage to Ultimate Mouse.

SETTING UP ULTIMATE MOUSE

Turning Ultimate Mouse on/off

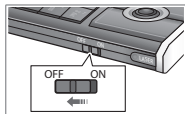
Turning on



Slide the **Power** switch to the ON position.

- You will hear a ringing sound and the white backlight of the alphanumeric keypad will light up for approximately 5 seconds.

Turning off



Slide the **Power** switch to the OFF position.

- The power will go off and a connected PC will be disconnected.

Sleep mode

During the operation, the energy saving feature allows Ultimate Mouse to go into Sleep mode after 5 minutes of inactivity. The LED will turn off. Click any Ultimate Mouse button except the magnetic sensor to reactivate Ultimate Mouse. Ultimate Mouse will automatically reestablish connection to the PC.

Caution

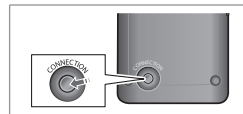
- Do not press the magnetic sensor while turning on Ultimate Mouse. This may cause a malfunction.

Note

- To save the battery power, turn off Ultimate Mouse while not in use.
- It is necessary to power Ultimate Mouse off when traveling on commercial airlines due to FCC regulations regarding radio emitting devices.

Pairing Ultimate Mouse with a PC

The Ultimate Mouse is designed to function with any standard Bluetooth software. Starting with Bluetooth manager, your PC detects Bluetooth-enabled devices based on the Bluetooth settings. See pages 18~19 for an example.



- Press the **Connection** button, located on the bottom of the mouse, until red LED blinks.

- The red LED will blink and Ultimate Mouse is now in pairing mode.

- On your PC, open Bluetooth settings software and add new connection.
 - Follow the instructions of the Bluetooth settings software.
- The PC will search for a Bluetooth-enabled device to pair with. When the Ultimate Mouse displays on the device list, select it and complete the pairing settings.
- Ultimate Mouse is paired with the PC, connection will be made automatically.
 - If the connection is successful, you will hear a ringing sound and blue LED will blink.

Automatic connection

When Ultimate Mouse is turned on, Ultimate Mouse will automatically attempt to connect to the last used PC if it is available.

Note

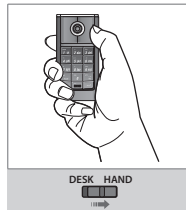
- Ultimate Mouse does not require a PIN code.
- If no PC is paired within 10 minutes, the pairing mode ends automatically.
- If at any time a pairing or connection between two devices needs to be re-established, the pairing should be conducted individually.



USING ULTIMATE MOUSE

Using Ultimate Mouse in the hand

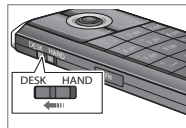
This comfortable Ultimate Mouse can be lifted off the desk and works in the hand.



- ▶ Slide the **Mode** switch to the **HAND** position.
 - Optical sensor turns off and the mouse will be in Hand mode.
- ▶ Hold the mouse using a relaxed handshake position. Use your thumb to press the **Left/Right** buttons and magnetic sensor.
- ▶ Moving the magnetic sensor up/down controls the mouse cursor movements.

Using Ultimate Mouse on the desk

The mouse can be used by placing it on any flat surface and using it like a regular mouse.



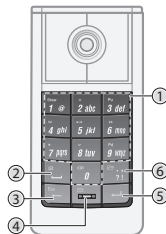
- ▶ Slide the **Mode** switch to the **DESK** position.
 - It functions exactly like your PC mouse in Bluetooth mode.
- ▶ Moving the magnetic sensor up/down scrolls the web page.
 - Press the **FN** button to use magnetic sensor as a 4-way key.

Note

- Avoid using the mouse on a metal surface. Metals, such as iron, aluminum and copper shield the Bluetooth transmission and may slow down the Ultimate Mouse's response.

Using the keyboard function

You can enter numbers and letters by using a mouse alphanumeric keypad.



Button	Operation
① Alphanumeric key	Enters numbers and letter like any keyboard.
② —	Space
③ ←(Clear)	Deletes any character before the current position of the cursor.
④ —	LED key - Switches between lowercase and uppercase letters.
⑤ ↵(Enter)	Returns a cursor to the next line or executes a command or operation.
⑥ ., ? !	Punctuation marks key - Punctuation marks are the period, comma, question mark, exclamation point.

- ▶ To enter letters, press the alphanumeric key once for the number, twice for the first letter, three times of the second letter, and four times for the third letter.

Press the appropriate key until the character you want appears on the screen.

Example : To enter 'IceRage', follow the instructions below.

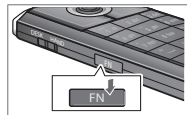
- ① The LED key switches between lowercase and uppercase letters. Press the LED key to change a lower case letter to a capital letter.
- ② Press the 4 key four times to enter **I**.
- ③ Press the LED key to change a capital letter to a lower case letter.
- ④ Press the 2 key four times to enter **c**.
- ⑤ Press the 3 key four times to enter **e**.
- ⑥ Press the LED key to change a lower case letter to a capital letter.
- ⑦ Press the 7 key four times to enter **R**.
- ⑧ Press the LED key to change a capital letter to a lower case letter.
- ⑨ Press the 2 key twice to enter **a**.
- ⑩ Press the 4 key twice to enter **g**.
- ⑪ Press the 3 key three times to enter **e**.



USING ULTIMATE MOUSE

Using the FN button

For each performance, there is a button for multiple functions to access expanded features. Pressing the **FN** button changes its existing button functions to suit your needs.

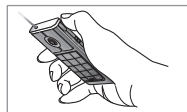


► Press the **FN** button located on the left side.

- The LED stays lit in green and its existing button functions changes.

Presenter function

Microsoft Office PowerPoint is most commonly used software for presentation. Ultimate Mouse will control your exciting presentations. Use a green icon on the alphanumeric keys to use presenter function.



Button	Operation
Show	Slideshow- Automatically displays a series of chosen slides in a full screen.
Pu	Page up- Moves to previous page
Pd	Page down- Moves to next page
Esc	End show

Laser pointer

Red laser can be used to project a dot of light from the laser pointer that can be used to point out items or objects to an audience during a presentation.

► Press and hold the **LASER** button on the right side of the mouse and aim the laser pointer towards the item you want to highlight.

Slideshow

► Press the **Show** button to display a series of chosen slides in a full screen. Press the **Pu/Pd** button of the mouse to move through the slides.

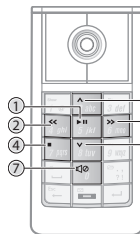
To end the show, press the **Esc** button.

Note

- The **Pu/Pd** button is also available for use with web pages and other documents i.e., Word Documents.

Media player function

With playback features, Ultimate Mouse makes it easy to enjoy your Media player. Use a green icon on the alphanumeric keys to control the Media player.



Button	Operation
① ►	Playback/Pause
② <<	Previous track
③ >>	Next track
④ ■	Stop
⑤ ▲	Volume up
⑥ ▼	Volume down
⑦ 🔊	Mute

To playback/pause track

- Press ►||.
- The first track on the list will playback.
- Press ►|| to pause during track playback.

To stop track

- Press ■ during track playback.
- The track stops.

Note

- The playback feature is configured to be compatible with Windows Media Player, Real Player, apple iTunes and QuickTime programs for Windows. These features may be not compatible according to a content and a software.



USING ULTIMATE MOUSE

Using the FN button

Other functions

Microsoft Internet Explorer

Functions of two buttons, Left and Right, is changed.

Left button: Backward a web page

Right button: Forward a web page

Documents

Magnetic sensor: Uses as a 4-way key.

Green icons

Use green icon on the alphanumeric keys to perform following functions.

Green icon	Operation
	Browse the web or move to the beginning of the current web page in Internet Explorer.
	Open My Computer.
	Open e-mail program.
Esc	Uses as a shortcut for Stop, No, Quit, Exit, Cancel like any keyboard.



APPENDIX

Additional care and maintenance

- If you suspect water has gotten inside the mouse, turn off the mouse. Allow it to air-dry for at least 24 hours before using the mouse again.
- Gently wipe the surface of the mouse with a soft cloth when needed. Do not use chemicals of any kind. They may cause damage to the mouse or risk of fire.

Troubleshooting

Problem	Check point/Solution
Ultimate Mouse turns off.	<ul style="list-style-type: none"> • Check that the battery is completely dead or extremely low. Recharge the mouse by using a USB charging cable.
Ultimate Mouse is not moving or responding to the buttons pressed.	<ul style="list-style-type: none"> • Check that the mouse and Bluetooth-enabled PC are connected. Ultimate Mouse can only be connected to a Bluetooth-enabled PC. • Slide the Power switch to the OFF position to turn the mouse off. Then, turn it back on. • Check that the mouse is in Sleep mode. Click any Ultimate Mouse button except magnetic sensor to reactivate Ultimate Mouse.
LED does not change colors.	<ul style="list-style-type: none"> • Make sure that you are pressing the correct button. • There maybe a few seconds delay before the LED changes colors.
Ultimate Mouse cannot be paired with a Bluetooth-enabled PC.	<ul style="list-style-type: none"> • Make sure that the mouse is in pairing mode. A PC can be paired to the mouse only when in pairing mode. • Pairing should be done within 10 minutes. If no device is paired within 10 minutes, the pairing mode ends automatically.
Cursor movement is choppy.	<ul style="list-style-type: none"> • Change the location of the PC. (Radio Frequency signals can be interfered by physical obstacles and affect the wireless transmission. Noise and malfunction can result.) • Turn the mouse off and turn it back on.
Ultimate Mouse is not connecting to my PC.	<ul style="list-style-type: none"> • The mouse will only work with PCs which are compliant with Bluetooth version 2.0 or higher. Check that the PC you want to use is Bluetooth-enabled.
Letters are not entered.	<ul style="list-style-type: none"> • Make sure that you are pressing the buttons properly. Do not press too hard or too quickly. • Check that the LED stays lit in green. If FN button is used, letters cannot be entered.

APPENDIX

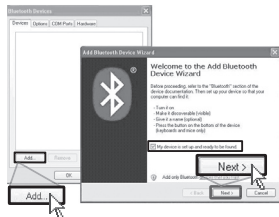
Pairing Ultimate Mouse with a PC using Microsoft software

This is an example of pairing with Microsoft software.



- 1 Double click on the Bluetooth icon in the system tray.

- Bluetooth Devices window pops up.



- 2 Click **Add...**

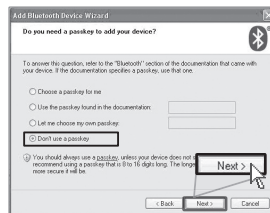
- Add Bluetooth Device Wizard window appears.

- 3 Click **Next>** after checking the item **My device is set up ready to be found** on Add Bluetooth Device Wizard window.

- The PC will now search for the Ultimate Mouse and other Bluetooth devices. Please wait until the search is completed.
- Make sure Ultimate Mouse is in pairing mode.

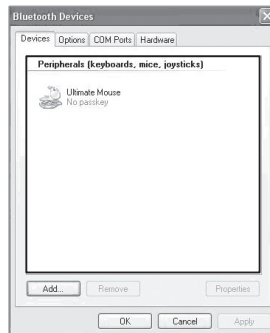
- 4 When 'Ultimate Mouse' displays on the device list, select it and click **Next>**.

- If Ultimate Mouse is not detected, click **Search Again**.



- 5 Click **Next>** after checking the item **Don't use a passkey**.

- Windows will begin connecting with Ultimate Mouse. Please wait until the installation is completed.



- 6 Click **Finish**.

- Pairing has been successfully completed.

- 7 Ultimate Mouse icon appears on the Bluetooth Devices window.

- Connection is made automatically.
- If the connection is successful, you will hear a ringing sound and blue LED will blink.

Note

Deleting a paired Ultimate Mouse

Right click on Ultimate Mouse icon in the Bluetooth Devices window and click **Delete** from the drop-down menu. Message to confirm deleting a selected Ultimate Mouse pops up and then click **OK**. The selected Ultimate Mouse is deleted.

APPENDIX

Specifications

Bluetooth version	Version 2.0, Class 2
Bluetooth profile support	HID (Human Interface Device)
Operating range	Up to 10 meters (30ft)
Dimensions	43 mm(W) x 87 mm(L) x 12 mm(H)
Weight	40g
Operating temperature	-10 ~ 50
Charger	Mini USB (Charge only)
Battery	Li-ion polymer 300 mAh
Charge time	2.5 Hrs
Standby time	Up to 100 Hrs
Optical resolution	1000 CPI (Count Per Inch)
Magnetic sensor	Magnetic sensor
Laser pointer	Class II, under 1mW
LED	RGB 7 colors
Keypad backlight	White

FCC

This device complies with part 15 of the FCC Rules. Operation is subject to the following two conditions:

(1) This device may not cause harmful interference, and (2) this device must accept any interference received, including interference that may cause undesired operation.

Note :his equipment has been tested and found to comply with the limits for a Class B digital device, pursuant to part 15 of the FCC Rules. These limits are designed to provide reasonable protection against harmful interference in a residential installation. This equipment generates, uses and can radiate radio frequency energy and, if not installed and used in accordance with the instructions, may cause harmful interference to radio communications. However, there is no guarantee that interference will not occur in a particular installation. If this equipment does cause harmful interference to radio or television reception, which can be determined by turning the equipment off and on, the user is encouraged to try to correct the interference by one or more of the following measures:

- 1.1. Reorient or relocate the receiving antenna
- 1.2. Increase the separation between the equipment and receiver
- 1.3. Connect the equipment into an outlet on a circuit different from that to which the receiver is connected
- 1.4. Consult the dealer or an experienced radio/TV technician for help

The device and its antenna must not be co-located or operating in conjunction with any other antenna or transmitter.

Users are not permitted to make changes or modify the device in any way.

WARNING

Changes or modifications not expressly approved by Prime Entertainment will void the user's authority to operate the equipment.

"CAUTION : Exposure to Radio Frequency Radiation.

Antenna shall be mounted in such a manner to minimize the potential for human contact during normal operation. The antenna should not be contacted during operation to avoid the possibility of exceeding the FCC radio frequency exposure limit.

Warranty

Virtuu USA, Brand name 'IceRage' warrants for 1 year, parts and labor.
For any reason the Ultimate Mouse malfunctions, it will be replaced with a new unit.
Kindly follow the following instructions.

1. Call 1-866-966-9744 for an RMA #
2. Mail to : Virtuu USA
205 Broadway St. Terrace Level Frederick, Md 21701
3. Please include proof of purchase.
4. Make sure the RMA# is on the outside of the package.
5. Don't forget to include your mailing address and phone no.

IceRage 
How cool is this!